



Fort Bend County Engineering  
FORT BEND COUNTY, TEXAS

J. Stacy Slawinski, P.E.  
County Engineer

January 26, 2026

Judge KP George  
Fort Bend County Judge  
401 Jackson Street  
Richmond, Texas 77406-0148

**Re: *Public Road Connection for Wildbloom Boulevard at FM 1875 on behalf of Forestar, USA – Sponsorship***

Honorable Judge George:

Fort Bend County Engineering Department has received and reviewed a request (letter attached) from GFT, Inc., on behalf of Forestar, USA for Fort Bend County to sponsor a project for a public road connection for Wildbloom Boulevard at FM 1875. The road connection will provide a point of access for Wildbloom Subdivision.

Any and all costs involved with the project will be borne by Forestar, USA. There will be no cost to Fort Bend County.

The Texas Department of Transportation requests that an agency, such as Fort Bend County, act as a sponsor for the project. This means that the permit for the work will be issued in the name of Fort Bend County and the County accepts responsibility for the terms and conditions of the permit.

We recommend acceptance of the sponsorship and request that this item be placed on the 02/12/2026 Commissioners Court agenda. We have prepared a letter to Texas Department of Transportation for the County Judges' signature.

If there are any questions, please do not hesitate to call.

Sincerely,



Hugo Sanchez

Development Services Manager

Attachment: Scope of Work

cc: Commissioner Vincent M Morales, Jr., Precinct 1  
File



**COUNTY JUDGE**  
Fort Bend County, Texas

The Honorable KP George  
County Judge

(281) 341-8608  
Fax (281) 341-8609

February 12, 2026

Glenn Allbritton, P.E.  
Houston District Engineer  
Texas Department of Transportation  
7600 Washington Avenue  
Houston, Texas 77007-1044  
[glenn.allbritton@txdot.gov](mailto:glenn.allbritton@txdot.gov)

Re: ***Public Road Connection for Wildbloom Boulevard at FM 1875 on behalf of Forestar, USA – Sponsorship***

Dear Glenn Allbritton:

Fort Bend County has received and reviewed a request (letter attached) from GFT, Inc. for Fort Bend County to sponsor a connection to a Texas Department of Transportation roadway on behalf of Forestar, USA, for a public road connection for Bellaire Boulevard at FM 1875, at no cost to the County.

The request was approved by Fort Bend County Commissioners Court at their meeting dated February 12, 2026. We request that a permit for the public road connection be issued with Fort Bend County as sponsor for this project.

If there are any questions or need for additional information, please call Hugo Sanchez in our Engineering Department at 281-633-7500.

Sincerely,

KP George  
Fort Bend County Judge

KPG/

Attachments: Resolution  
Drawing

cc: Jose Hernandez, GFT, Inc. [Hernandez@gftinc.com](mailto:Hernandez@gftinc.com)  
[Denese Laskowski, TxDOT denese.laskowski@txdot.gov](mailto:Denese.Laskowski@txdot.gov)

File

301 Jackson Street • Richmond, TX 77469

THE STATE OF TEXAS       §

COUNTY OF FORT BEND   §

**RESOLUTION TO SPONSOR A PROJECT FOR A PUBLIC  
ROAD CONNECTION FOR WILDBLOOM BOULEVARD AT FM 1875  
ON BEHALF OF FORESTAR, USA**

On this 12 day of February, 2026, the Commissioners Court, sitting as the governing body of Fort Bend County, Texas, at a regular meeting, upon motion of Commissioner Meyers, seconded by Commissioner Prestage, duly put and carried;

**WHEREAS**, the proposed sponsorship project includes the installation of a public road connection at FM 1875 for Wildbloom Boulevard.

**WHEREAS**, the funding for such sponsorship of the project is to be provided through sources other than Fort Bend County.

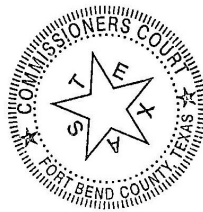
**NOW, THEREFORE, BE IT RESOLVED** that Fort Bend County expresses its support and sponsorship of such project with the Texas Department of Transportation to cause such improvements to be made at FM 1875 for Wildbloom Boulevard.

**FORT BEND COUNTY**

By: *KP George*  
KP George, County Judge

ATTEST:

*Laura Richard*  
Laura Richard, County Clerk





January 22, 2026

Honorable KP George  
Fort Bend County Judge  
301 Jackson Street, Suite 719  
Richmond, Tx 77469

Re: Request for Sponsorship Letter  
Proposed Street Tie-in at Southbound FM 1875  
Wildbloom Boulevard for Wildbloom Development  
Project Number: 081125.550610

Dear Judge George,

GFT Infrastructure, Inc. is preparing a street tie-in permit application to submit to TxDOT for the proposed street tie-in Wildbloom Boulevard at FM 1875. A stop sign is proposed for the eastbound traffic Wildbloom Boulevard at the intersection. Forestar, USA, the developer, will fund the cost of construction with no expense to Fort Bend County. The attached construction plan drawings were prepared in accordance with TxDOT's street tie-in requirements.

Per TxDOT permit application process, a sponsorship letter is required from Fort Bend County. I am requesting Fort Bend County's sponsorship of this project with a letter to be included with the TxDOT permit application package.

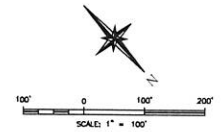
If you have any questions, comments, or need any further qualifications, please let me know.

Sincerely,

Jose A. Hernandez, EIT  
Project Engineer

GFT, Inc.  
Firm No. 1800

**BENCHMARK:**  
 ALL BEARINGS ARE LAURENT GRID BEARINGS AND ALL COORDINATES REFER TO THE TEXAS STATE PLANE COORDINATE SYSTEM, SOUTH CENTRAL ZONE (4402), AS DEFINED BY ARTICLE 21.071 OF THE NATURAL RESOURCES CODE OF THE STATE OF TEXAS, 1983 DATUM (DO NOT ADJUSTMENT). ALL DISTANCES ARE ACTUAL DISTANCES. SCALE FACTOR = 0.99988625.



**LEGEND**

	PROP. STM. SPH. INLET & M.H.
	EXIST. STM. SPH. INLET & M.H.
	PLAT BOUNDARY
	BLOCK NUMBER
	BLOCK REFERENCE NUMBER
	TYPE II BARRICADE
	TRAFFIC SIGN
	STREET SIGN
	U.E., D.E., W.L.E. & S.S.E.
	B.L.
	U.E.
	D.E.
	W.L.E.
	S.S.E.
	BUILDING LINE

ALL EXISTING UTILITY LOCATIONS ARE APPROXIMATE. CONTRACTOR TO FIELD VERIFY BEFORE COMMENCEMENT OF WORK.

FBC Engineering Approval	SEAL

REVISION NO.	DATE	REVISION DESCRIPTION	MADE	CHECKED	APPROVED

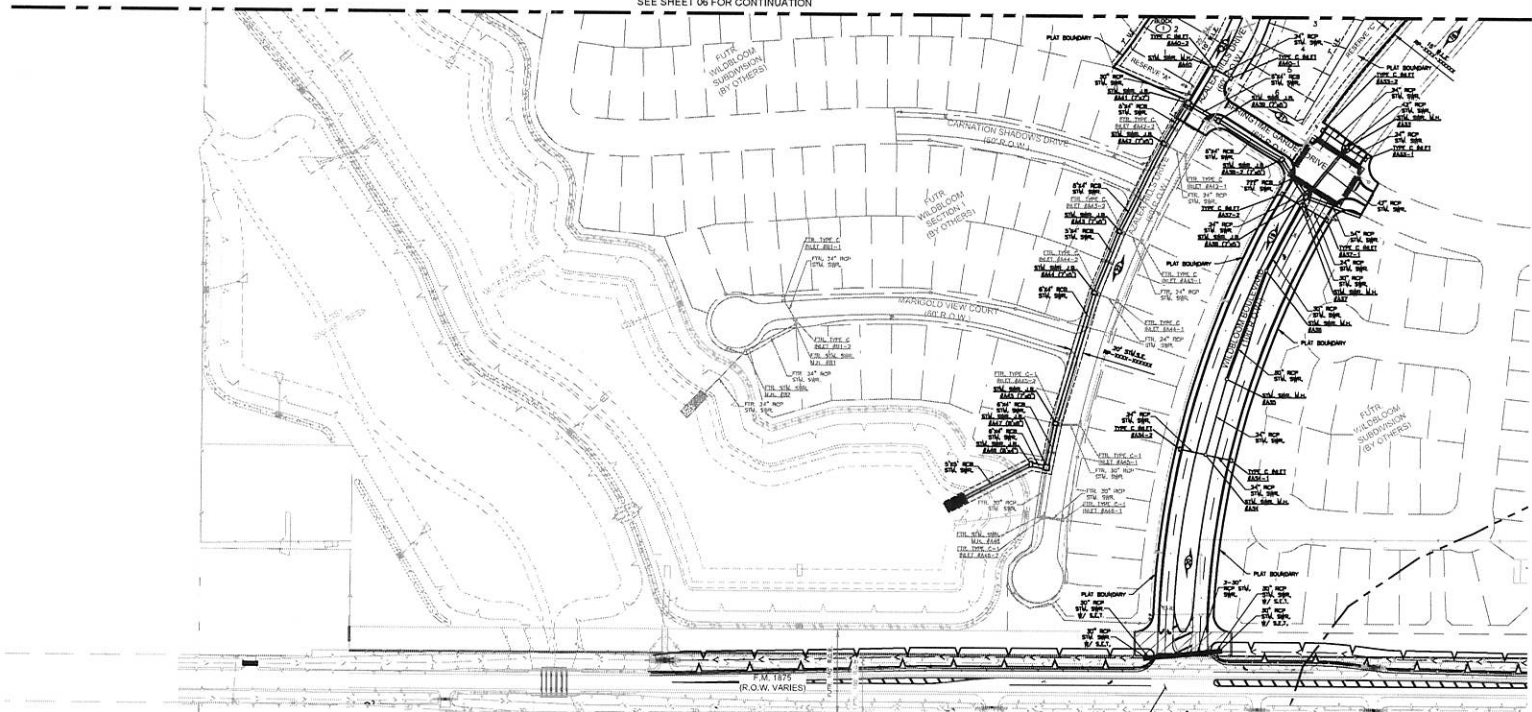


FORT BEND COUNTY  
 WILDBLOOM  
 SECTION 2  
 ROSENBERG, TEXAS

PAVING & DRAINAGE INDEX MAP  
 SHEET 2 OF 2

DESIGN BY: JWH	DATE: 1/13/2026	SHEET No. 06 OF 114
DRAWN BY: SEY	HORIZ: 1" = 100'	JOB No. 5606-12
APPROVED: KJK	SCALE: VERT: 1" = 100'	

MATCHLINE  
 SEE SHEET 06 FOR CONTINUATION



PROP. WILDBLOOM TURN LANES  
 (SEE TURN LANE PROPORTION  
 OF THIS PLAN SET)

PROPOSED TURN LANE PROPORTION  
 SEE TURN LANE PROPORTION  
 OF THIS PLAN SET

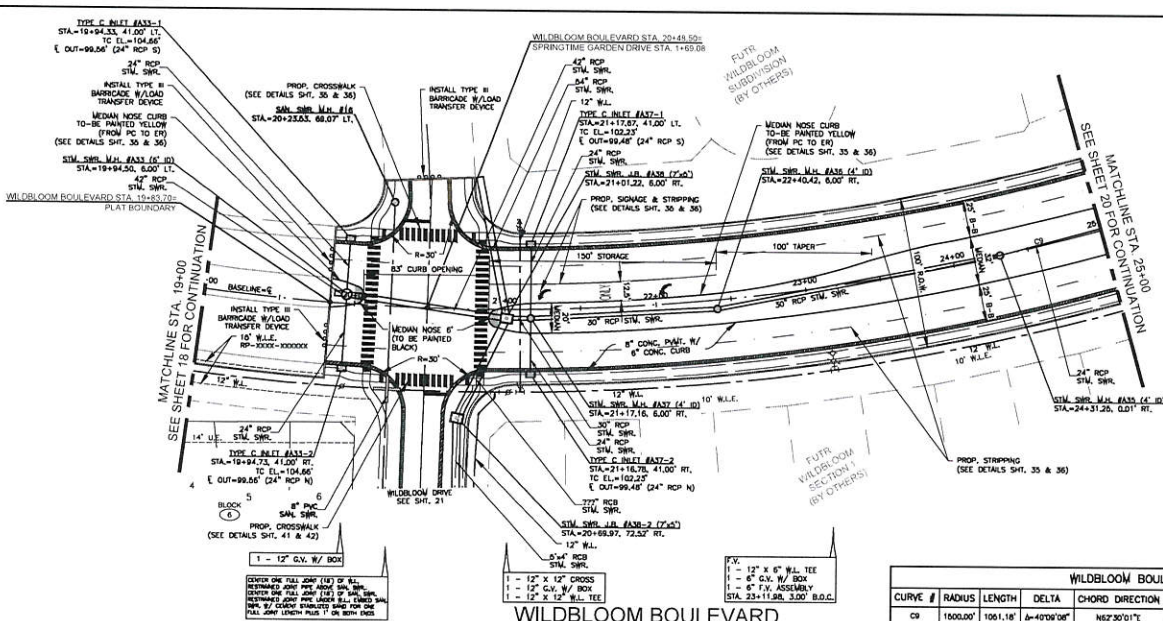
PROPOSED TURN LANE PROPORTION  
 SEE TURN LANE PROPORTION  
 OF THIS PLAN SET

ZONE 1 BARRICADE  
 SEE TURN LANE PROPORTION  
 OF THIS PLAN SET

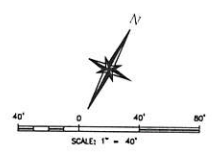
0 1 2 3  
 ORIGINAL SCALE IN INCHES  
 FOR REDUCED PLANS

PW:\DANNENBAUM-PW.BENTLEY.COM\DANNENBAUM-PW-06\DOCUMENTS\1130\5506-12\DRAWINGS\CNSTR PLANS\07 P&DM.DWG

PLOTED AT 1/13/2026 1:48:07 PM  
 PLOT SCALE: 1" = 100'  
 PLOT SHEET: 06 OF 114  
 PLOT JOB: 5606-12  
 PLOT USER: JWH  
 PLOT DEVICE: HP DesignJet T1100e  
 PLOT PATH: C:\Users\jwh\OneDrive\Desktop\5606-12\DRAWINGS\CNSTR PLANS\07 P&DM.DWG  
 PLOT SIZE: 36" x 48"



**BENCHMARK:**  
 ALL BEARINGS ARE LAURENT GRID BEARINGS AND ALL COORDINATES REFER TO THE TEXAS STATE PLANE COORDINATE SYSTEM, SOUTH CENTRAL ZONE (14202), AS DEFINED BY ARTICLE 21.071 OF THE NATURAL RESOURCES CODE OF THE STATE OF TEXAS, 1983 DATUM (COORD. ADJUSTMENT). ALL DISTANCES ARE ACTUAL DISTANCES. SCALE FACTOR = 0.999986625.



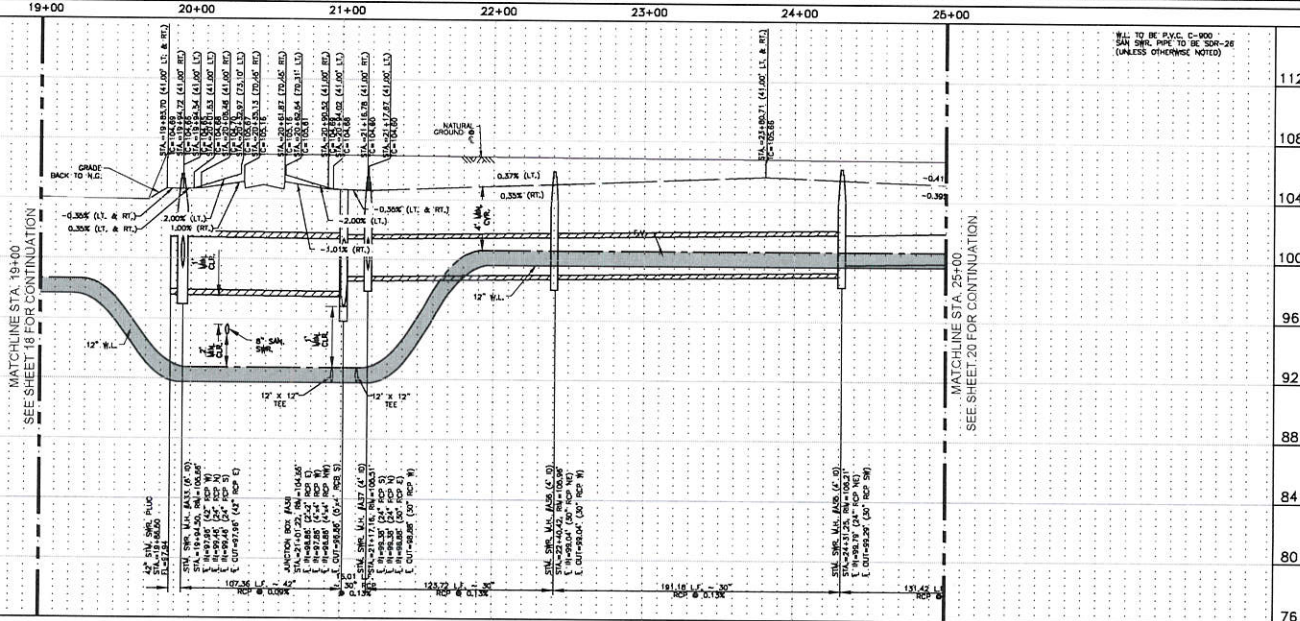
- LEGEND**
- SAN. SWR. LEAD
  - PROP. SAN. SWR. WITH M.H.
  - EXIST. SAN. SWR. WITH M.H.
  - PROP. STIM. SWR. ALLET & M.H.
  - EXIST. STIM. SWR. ALLET & M.H.
  - PROP. WATER LANE, FLUSHING VALVE, GATE VALVE, BLOW OFF VALVE, AND VERTICAL OFFSET
  - WATER LANE, BLOW OFF VALVE, AND VERTICAL OFFSET
  - WATER LANE W/ 8" METER
  - TRAFFIC SIGN
  - STREET SIGN
  - BLOCK NUMBER
  - U.E., D.E., W.L.E., & S.S.E.
  - U.E.
  - D.E.
  - W.L.E.
  - S.S.E.
  - BUILDING LINE
  - PROPOSED CUT
  - PROPOSED FILL
  - DEDICATED ROW
  - 6" CONCRETE CURB
  - WHEEL CHAIR RAMP (TYPE 2)

**NOTE:**  
 1. CROSS SLOPE THROUGH CROSSWALK SHALL NOT EXCEED 2% IN ACCORDANCE WITH A.D.A.

**WILDBLOOM BOULEVARD CURVE TABLE**

CURVE #	RADIUS	LENGTH	DELTA	CHORD DIRECTION	CHORD LENGTH	START POINT	END POINT
CP	1000.00'	105.11'	4°49'08"00"	N67°30'01"1"	1029.80'	(13745123.25, 2929245.57)	(137450598.75, 2940156.02)

- F.V.**
- 1 - 12" X 6" W.L. TEE
  - 1 - 6" C.V. W/ BOX
  - 1 - 6" T.V. ASSEMBLY
  - STA. 23+11.88, 3.00' B.O.C.



FBC Engineering Approval  
 SEAL  
 STATE OF TEXAS  
 KYLE J. KEEN  
 13639E  
 PROFESSIONAL ENGINEER  
 11/13/2026

REVISION No. DATE REVISION DESCRIPTION MADE CHECKED APPROVED

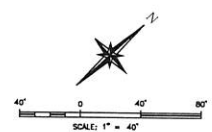
**GFT**  
 FORT BEND COUNTY  
 WILDBLOOM SECTION 2  
 ROSENBERG, TEXAS

PLAN & PROFILE  
 WILDBLOOM BOULEVARD  
 STA. 19+00 TO STA. 25+00

DESIGN BY: JAH DATE: 1/13/2026 SHEET No. 19 OF 114  
 DRAWN BY: SEY  
 APPROVED: MKK SCALE: HORIZ: 1" = 40'  
 VERT: 1" = 4" JOB NO. 5008-12

PUPPET: 1/8" = 1'-0" (1/4" = 1'-0")  
 STAKES: 1/8" = 1'-0" (1/4" = 1'-0")  
 CURB: 1/8" = 1'-0" (1/4" = 1'-0")  
 GUTTER: 1/8" = 1'-0" (1/4" = 1'-0")  
 ROADWAY: 1/8" = 1'-0" (1/4" = 1'-0")  
 UTILITY: 1/8" = 1'-0" (1/4" = 1'-0")  
 ORIGINAL SCALE IN INCHES FOR REDUCED PLANS

**BENCHMARK:**  
 ALL BEARINGS ARE LAURENT GRID BEARINGS AND ALL COORDINATES REFER TO THE TEXAS STATE PLANE COORDINATE SYSTEM, SOUTH CENTRAL ZONE (44002), AS DEFINED BY ARTICLE 21.071 OF THE NATURAL RESOURCES CODE OF THE STATE OF TEXAS, 1983 DATUM (FOOT ADJUSTMENT). ALL DISTANCES ARE ACTUAL DISTANCES. SCALE FACTOR = 0.99986622.



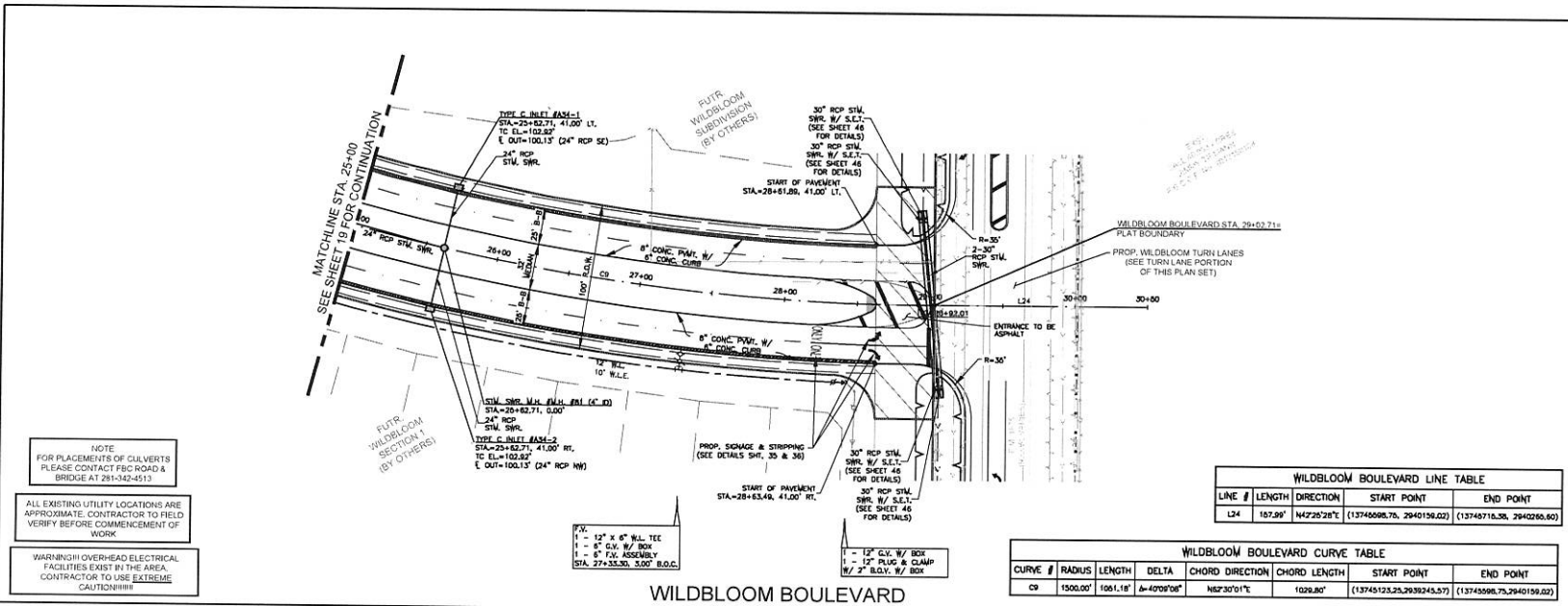
- LEGEND**
- SAN. SHR. LEAD
  - PROP. SAN. SHR. WITH M.H.
  - EXIST. SAN. SHR. WITH M.H.
  - PROP. STYL. SHR. INLET & M.H.
  - EXIST. STYL. SHR. INLET & M.H.
  - PROP. WATER LINE, FLUSHING VALVE, GATE VALVE, BLOW OFF VALVE, AND VERTICAL OFFSET
  - EXIST. WATER LINE, FLUSHING VALVE, GATE VALVE, BLOW OFF VALVE, AND VERTICAL OFFSET
  - WATER LEAD BY 1/2" WETER
  - TRAFFIC SIGN
  - STREET SIGN
  - PLAT BOUNDARY
  - BLOCK NUMBER
  - U.E., D.E., W.L.E., & S.S.E.
  - U.E.
  - D.E.
  - W.L.E.
  - S.S.E.
  - SANITARY SEWER EASEMENT
  - BUILDING LINE
  - PROPOSED CUT
  - PROPOSED FILL
  - DEDICATED ROW
  - 6" CONCRETE CURB
  - WHEEL CHAIR RAMP (TYPE 7)

**WILDBLOOM BOULEVARD LINE TABLE**

LINE #	LENGTH	DIRECTION	START POINT	END POINT
L24	107.99'	N47°20'28"E	(13745123.25, 2940159.02)	(13745098.76, 2940265.80)

**WILDBLOOM BOULEVARD CURVE TABLE**

CURVE #	RADIUS	LENGTH	DELTA	CHORD DIRECTION	CHORD LENGTH	START POINT	END POINT
C9	1500.00'	1061.18'	Δ=47°09'08"	N67°30'01"E	1026.80'	(13745123.25, 2939245.57)	(13745098.76, 2940159.02)

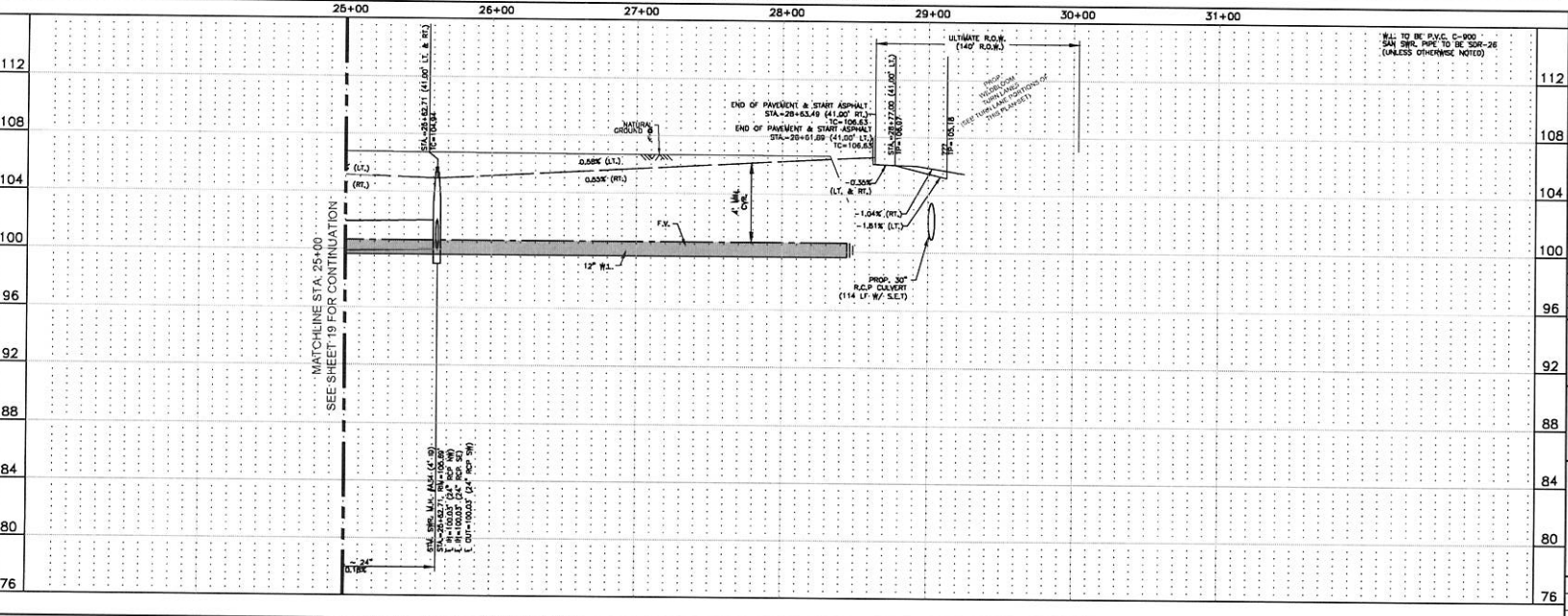


**NOTE**  
 FOR PLACEMENTS OF CULVERTS PLEASE CONTACT FBC ROAD & BRIDGE AT 281-342-4513

ALL EXISTING UTILITY LOCATIONS ARE APPROXIMATE. CONTRACTOR TO FIELD VERIFY BEFORE COMMENCEMENT OF WORK.

WARNING!! OVER-HEAD ELECTRICAL FACILITIES EXIST IN THE AREA. CONTRACTOR TO USE EXTREME CAUTION!!!!

- P.V. = 12" x 4" W.L. TEE
- 1" = 6" C.V. W/ BOX
- 1" = 6" F.V. ASSEMBLY
- STA. 27+53.30, 300' B.O.C.
- 1" = 12" C.V. W/ BOX
- 1" = 12" PLUG & CLAMP
- W/ 2" B.D.V. W/ BOX



FBC Engineering Approval

SEAL

REVISION NO.	DATE	REVISION DESCRIPTION	MADE	CHECKED	APPROVED

**GFT**  
 GROUNDWATER FERTILIZATION TECHNOLOGIES, INC.  
 FORT BEND COUNTY  
 WILDBLOOM SECTION 2  
 ROSHARON, TEXAS

**PLAN & PROFILE**  
 WILDBLOOM BOULEVARD  
 STA. 25+00 TO END

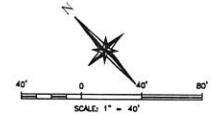
DESIGN BY: JAH      DATE: 1/13/2026      SHEET No. 20 OF 114  
 DRAWN BY: SEY      SCALE: HORIZ: 1" = 40'      JOB No. 5506-12  
 APPROVED: HJK      SCALE: VERT: 1" = 4'



POINT #	STATION	OFFSET	ELEVATION	DESCRIPTION
(1)	23+28.66	56.39' RT.	101.00	30" RCP STM. SWR. INLET W/ S.E.T.
(2)	23+29.20	56.78' RT.	101.00	30" RCP STM. SWR. INLET W/ S.E.T.
(3)	24+42.32	48.42' RT.	100.89	30" RCP STM. SWR. OUTFALL W/ S.E.T.
(4)	24+41.98	45.02' RT.	100.89	30" RCP STM. SWR. OUTFALL W/ S.E.T.

**BENCHMARK:**  
 MSS MONUMENT NO. A96544  
 STAINLESS STEEL 100 ENGAGED IN SLEEVE STAINED WOOD 48 1986,  
 LOCATED AT THE CITY OF BEASLEY POST OFFICE, +/- .60',  
 SOUTHWEST OF THE SOUTH CORNER OF THE POST OFFICE.  
 PUBLISHED ELEVATION = 103.00' NAVD83 (2012 ADJUSTMENT)

**T.B.M.:**  
 "C" CUT IN CONCRETE AT THE MIDPOINT OF A HEADWALL LOCATED  
 ALONG THE SOUTHWEST SIDE OF FM 1875 WHERE IT CROSSES SNAKE  
 CREEK, AS SHOWN HEREON.  
 ELEVATION = 103.42' NAVD83



**LEGEND**

- SAN. SWR. LEAD
- PROP. SAN. SWR. WITH M.H.
- EXIST. SAN. SWR. WITH M.H.
- PROP. STM. SWR. INLET & M.H.
- EXIST. STM. SWR. INLET & M.H.
- PROP. WATER LINE, FLUSHING VALVE, GATE VALVE, BLOW OFF VALVE, AND VERTICAL OFFSET
- EXIST. WATER LINE, FLUSHING VALVE, GATE VALVE, BLOW OFF VALVE, AND VERTICAL OFFSET
- WATER LEAD W/ 8" METER
- STREET SIGN
- PLAY BOUNDARY
- BLOCK NUMBER
- U.E., D.E., W.E., & S.E.E.
- U.E.
- D.E.
- W.E.
- S.E.E.
- SANITARY SEWER EASEMENT
- BUILDING LINE
- PROPOSED CUT
- PROPOSED FILL

ALL EXISTING UTILITY LOCATIONS ARE APPROXIMATE. CONTRACTOR TO FIELD VERIFY BEFORE COMMENCEMENT OF WORK.

WARNING! OVERHEAD ELECTRICAL FACILITIES EXIST IN THE AREA. CONTRACTOR TO USE EXTREME CAUTION!!!!

FBC Engineering Approval

SEAL

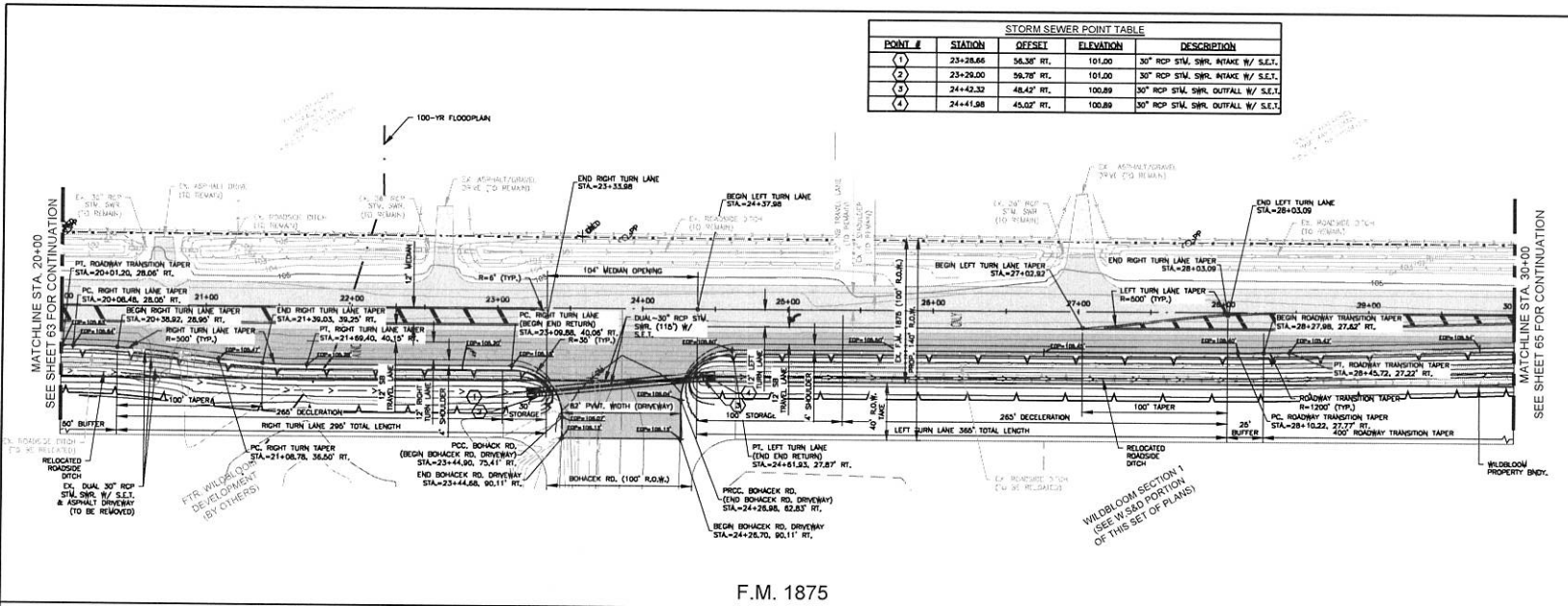
REVISION No. DATE REVISION DESCRIPTION MADE CHECKED APPROVED

**GFT**  
 GEOTECHNICAL ENGINEERING

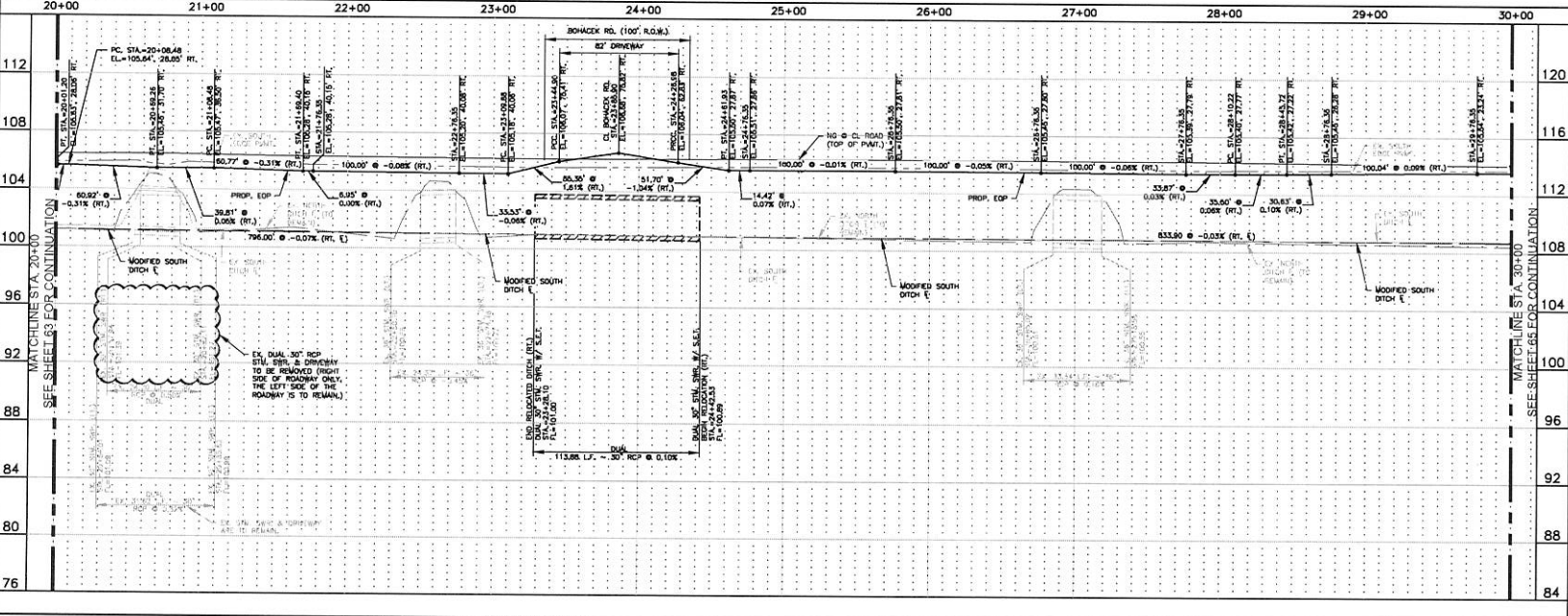
FORT BEND COUNTY  
 WILDBLOOM SECTION I  
 ROSENBERG, TEXAS

PLAN & PROFILE  
 F.M. 1875  
 STA. 20+00 TO STA. 30+00

DESIGN BY: ESW DATE: 1/13/2026 SHEET NO. 64 OF 114  
 DRAIN BY: ESW  
 APPROVED: KJK SCALE: HORIZ: 1" = 40' JOB NO. 5506-11  
 VERT: 1" = 4'



**F.M. 1875**



ORIGINAL SCALE IN INCHES FOR REDUCED PLANS