



Fort Bend County Engineering  
FORT BEND COUNTY, TEXAS

J. Stacy Slawinski, P.E.  
County Engineer

November 10, 2025

Commissioner Vincent M. Morales, Jr.  
Fort Bend County Precinct 1  
22333 Grand Corner Drive  
Katy, Texas 77494

**RE: Addition of "ONE HOUR PARKING" signs in Firethorne, All Sections**

Dear Commissioner:

At the request of Fort Bend County Municipal Utility District #151, Fort Bend County Engineering Department has completed the traffic control plan to place "One Hour Parking" signs at all mailbox pullouts within the Firethorne subdivision. The public hearing date for acceptance for the plan will be scheduled on the next available Commissioner's Court Agenda.

A copy of the traffic control plan is attached for your review. If we can be of further assistance please do not hesitate to contact me at 281-633-7528 or [chris.debaillon@fortbendcountytexas.gov](mailto:chris.debaillon@fortbendcountytexas.gov).

Sincerely,

Chris Debaillon, PE, PTOE  
Assistant County Engineer - Traffic

cc: Judge KP George, County Judge  
Scott Wiegat - FBC Road & Bridge  
Brian Fields - FBC Road & Bridge  
Major Rudy Castaneda – FBC Sheriff's Office [Rudy.Castaneda@fortbendcountytexas.gov](mailto:Rudy.Castaneda@fortbendcountytexas.gov)  
Major Manuel Zamora – FBC Sheriff's Office [Manuel.Zamora@fortbendcountytexas.gov](mailto:Manuel.Zamora@fortbendcountytexas.gov)  
File



HOUSTON  
3200 Southwest Freeway,  
Suite 2600  
Houston, TX 77027  
(713) 860-6400

**Audrey Briscoe**  
Attorney  
abriscoe@abhr.com  
(713) 860-6414

October 17, 2025

*Via Email*

Fort Bend County Commissioners' Office, Precinct 1  
301 Jackson Street  
Richmond, Texas 77469  
Attention: Katie Vackar, Project Manager  
Katie.vackar@fortbendcountytexas.gov

Re: Fort Bend County Municipal Utility District No. 151 (the "District")  
parking at parks and mail kiosks

Dear Ms. Vackar:

Allen Boone Humphries Robinson LLP represents the District, and we are writing on behalf of the District to request permission for the Board of Directors of the District to install "1 Hour Parking" signs at the small parking lots adjacent to the residents' cluster mailboxes, as shown on Attachment 1. There have been numerous issues with vehicles parking in these spots for extended periods of time, making it difficult for residents to find parking when they need to access their mailboxes. Because the parking spaces are located in the County's right-of-way, the District is seeking permission from the County to install these signs at the sole cost and expense of the District, and the District shall maintain these signs in good condition. The District currently has a contract with Fort Bend County Precinct 1 Constable's Office. Once the signs are installed, the Constable's Office has agreed to issue citations for violators.

The District appreciates your consideration of this request. If you have any questions, please contact me.

Sincerely,

Audrey Briscoe  
Attorney for the District

Letter to County re no parking signs

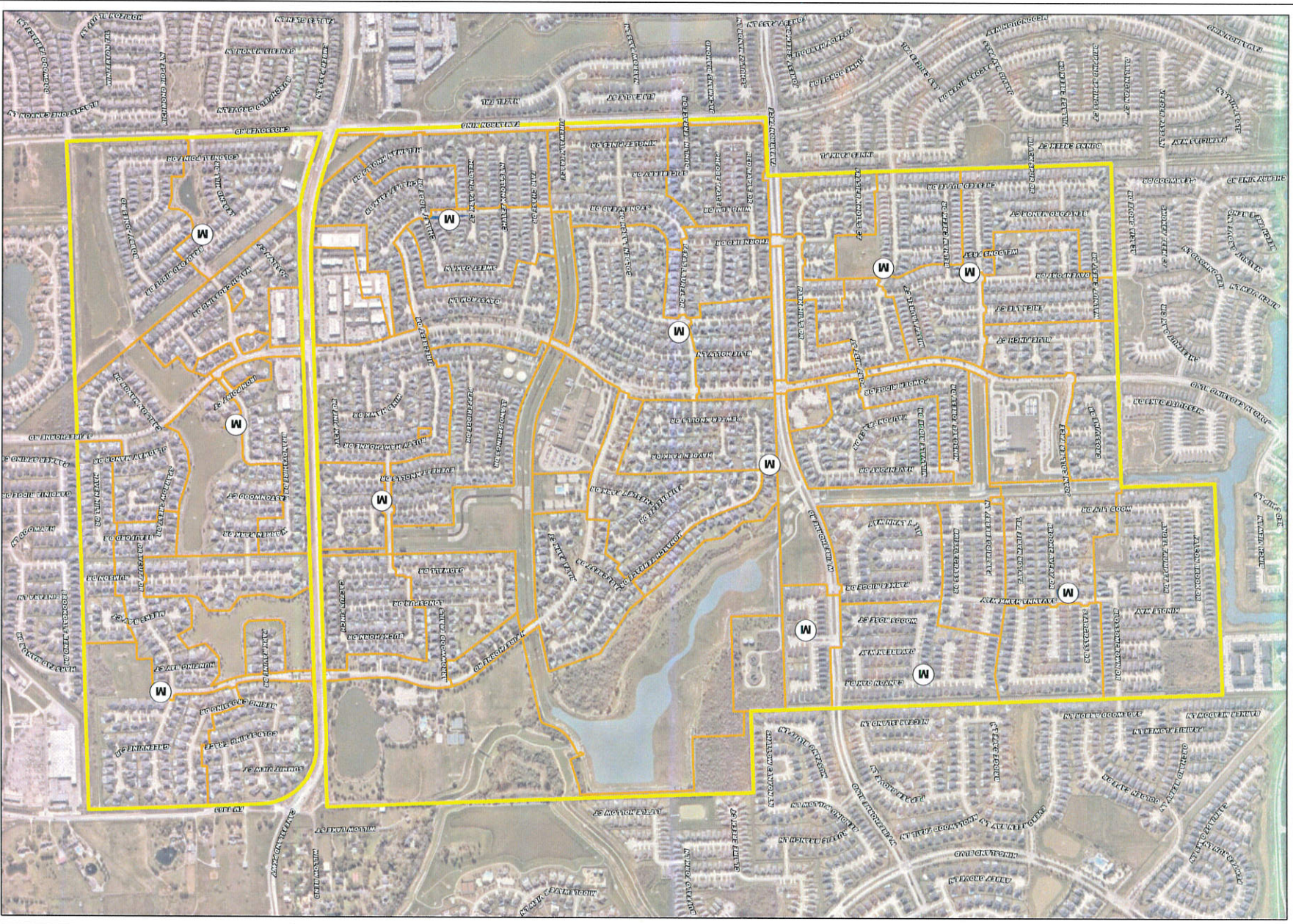
CENTRAL TEXAS  
919 Congress Avenue, Suite 1500  
Austin, TX 78701  
(512) 518-2424

NORTH TEXAS  
4514 Cole Avenue, Suite 1450  
Dallas, TX 75205  
(972) 823-0800

abhr.com

October 17, 2025  
Page 2 of 2



Attachment 1




  
**GIDDITY**

0 850  
 1 INCH = 850 FEET  
 FORT BEND COUNTY, TEXAS

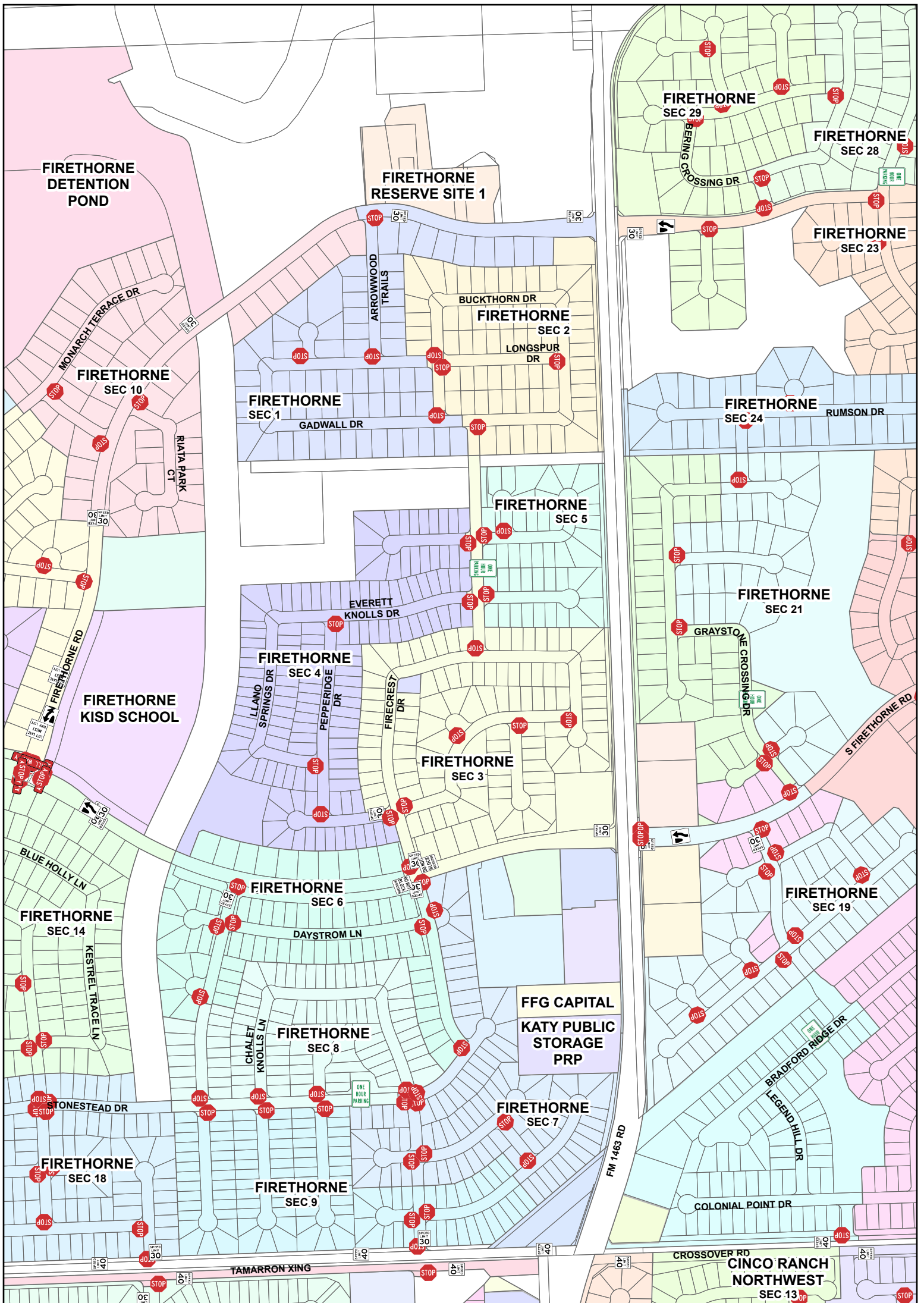
**DISTRICT OVERALL LAYOUT**  
**FRCMUD No. 151**

**LEGEND**  
 Section Boundary  
 District Boundary

**VICINITY MAP**  
 1 INCH = 5 MILES



GIDDITY  
 11000 Katy Road, Suite 100, Houston, TX 77058  
 Phone: 281.460.1100  
 Fax: 281.460.1101  
 Email: info@giddy.com  
 Website: www.giddy.com



## Firethorne Subdivisions Legend

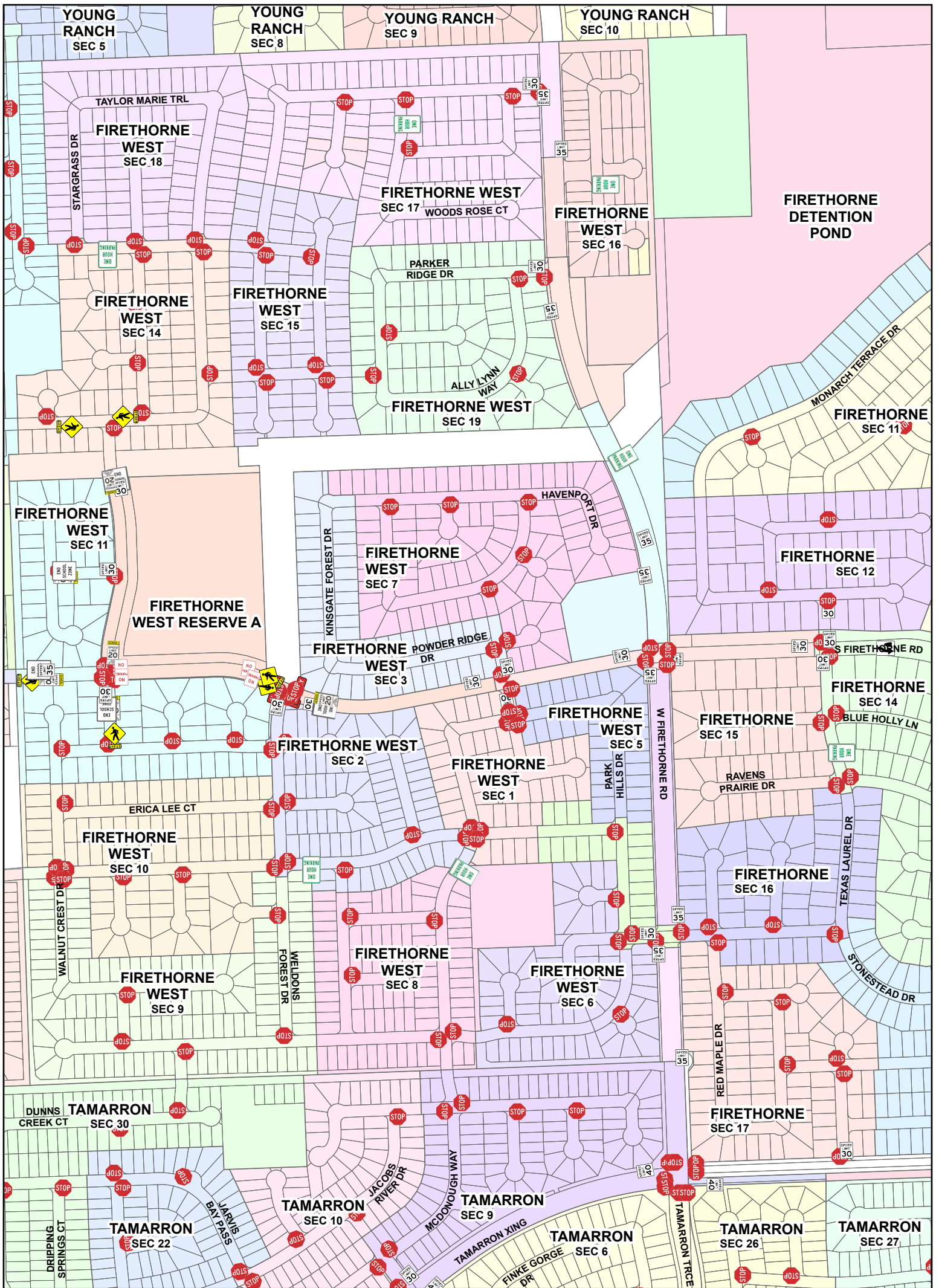


- |  |   |  |                    |
|--|---|--|--------------------|
|  | All Way Plaque (Written)                      |  | No U Turn          |
|  | Do Not Block Intersection                     |  | Speed Limit 30 mph |
|  | Keep Right (Graphic)                          |  | Speed Limit 35 mph |
|  | Mandatory Movement - Left Lane Must Turn Left |  | Speed Limit 40 mph |
|  | One Hour Parking                              |  | Stop               |

**Notes:**  
 The purpose of this traffic control plan is to establish traffic control by enforcing one hour parking in areas of Firethorne Subdivisions.



Plan by: Engineering GIS  
 Date: 11/10/2025  
 Plan Approved by: Chris Debailon, PE PTOE  
 Date: CD 11/10/25



## Firethorne Subdivisions

### Legend

- |                           |                      |                    |
|---------------------------|----------------------|--------------------|
| All Way Plaque (Written)  | School Zone (End)    | Speed Limit 40 mph |
| Keep Right (Graphic)      | School Zone - 20 mph | Stop               |
| No Parking (Written)      | Speed Limit 30 mph   | One Hour Parking   |
| School Crossing - Advance | Speed Limit 35 mph   |                    |

Notes:  
 The purpose of this traffic control plan is to establish traffic control by enforcing one hour parking in areas of Firethorne Subdivisions.



Plan by: Engineering GIS  
 Date: 11/10/2025

Plan Approved by: Chris Debailon, PE PTOE  
 Date: CD11/10/25