

**UNDERGROUND ELECTRIC SERVICE FACILITIES EXTENSION  
AGREEMENT SUPPLEMENTAL TERMS AND CONDITIONS**

**FOR**

**FORT BEND COUNTY  
Fort Bend County IT Building  
1419 Eugene Heimann Circle Richmond, Texas 77469**

Job #116180825

**CenterPoint Energy Houston Electric, LLC  
Major Underground Projects  
P. O. Box 1700; Houston, Texas 77251-1700**

**REFERENCE Fort Bend County DRAWINGS:**

Site Plan	Drawing #:	<u>MEP</u>	Received:	<u>March 6, 2025</u>
Electrical One-Line	Drawing #:	<u>E-111</u>	Received:	<u>March 6, 2025</u>
Load Analysis	Drawing #:	<u>E-111</u>	Received:	<u>March 6, 2025</u>

**REFERENCE CENTERPOINT ENERGY SPECIFICATIONS:**

Service Standards	:	April 24, 2023
Emergency Generators	:	007-231-82
Ready-Mix Concrete	:	007-221-01
Harmonic Distortion	:	007-231-83

Reviewed And Agreed To By: KP George Fort Bend County, County Judge  
 Signature Title  
KP George 11-24-2025  
 Print Name Date

If this Supplemental Terms and Conditions package is signed by anyone other than an official from Fort Bend County, it will not be considered valid. A valid signature will be considered an acceptance of all information contained within this Supplemental Terms and Conditions package.

CenterPoint Energy Houston, Texas		
WRITTEN	FD	4/24/2025
CHECKED	MJA	4/24/2025
APPROVED	MJA <i>MJA</i>	4/24/2025
<b>SHEET 1 OF 14 SHEETS</b>		
<b>PM6446</b>		

NO.	DATE	ITEMS REVISED	BY	CH	APP

**GENERAL**

- A. These Supplemental Terms and Conditions are adopted under the Facilities Extension Agreement for Distribution Voltage Facilities between CenterPoint Energy Houston Electric, LLC (CNP) and Fort Bend County for a facilities extension to 1419 Eugene Heimann Circle Richmond, Texas 77469. Fort Bend County and/or its contractors/representatives are herein referred to as the Customer.
- B. Service to be provided by CenterPoint Energy (CNP) as follows:
- C. The CNP Major Underground Projects (MUG) representative is Frank De Leon at 713-207-4941 or frank.deleon@centerpointenergy.com.  
  
The CNP Service Area Consultant is Chanda R. Mascoll, 281-341-4909.
- D. The Customer must comply with all CNP Service Standards, the National Electrical Code, the National Electrical Safety Code, all Occupational Safety and Health Administration (OSHA) requirements, the International Building Code and all local governing body codes.
- E. During installation of CNP equipment, CNP will make every effort to preserve the Customer's landscaping, parking areas, or other facilities. However, any cost that has been quoted to the Customer does not include any special replacements or repairs to these items. The Customer shall be solely responsible for any expenses associated with replacements or repairs to its facilities.
- F. The service arrangement outlined in these Supplemental Terms and Conditions is based on the Customer drawings referenced on page 1. Any changes in the design as illustrated in the referenced drawings may impact CNP's ability to meet the Customer's requested service date.
- G. Any changes, additions, deletions, rearrangements, relocations, rerouting, reduction of clearances, etc., of the Customer's and/or CNP's service facilities illustrated in these Supplemental Terms and Conditions shall have MUG's approval and may require a revised Supplemental Terms and Conditions. It is the Customer's responsibility to coordinate the location of all Customer installed facilities outlined in these Supplemental Terms and Conditions with all other structures and/or appurtenances not shown in the referenced drawings.
- H. Contact the MUG representative concerning Customer drawing revisions, information submission, questions, Supplemental Terms and Conditions revision requests, etc.
- I. Hard copy submittals may be mailed to the MUG representative (address – 3000A Harrisburg Blvd. – Houston, Texas 77003). Electronic submittals may be e-mailed to the MUG representative. The MUG representative will; “approve the submittals”, “approve the submittals as noted” or “not approve the submittals”. The Customer shall not install any

item that requires CNP approval before receiving an official approval from MUG. CNP shall not be responsible for any installed item that has not received MUG approval.

- J. The terms and conditions of CNP's Tariff for Retail Delivery Service, including the terms and conditions in the Construction Services Policy therein, are incorporated herein by reference.

**SERVICE CONNECTION**

- A. The Customer's maximum number of secondary cables that can be terminated in CNP's pad mount transformer is 8-750 MCM cables per phase. The Customer shall advise the MUG representative, about the type, size and number of secondary conductors. Ampacity equivalent sets of cable must be individually approved by the MUG representative prior to installation by the Customer. If the Customer's cable requirements exceed this specified maximum limit, it cannot be served directly from the pad mounted transformer. The Customer shall then install, own, and maintain a cable tap box (CTB) (See Section D).
- B. On installations not utilizing a CTB, the Customer shall furnish, own, and maintain all secondary service conduit and cable underground into the secondary opening of the transformer pad. Secondary conductors shall be extended a minimum of seven feet (7') above the transformer pad. **The Customer shall not install the secondary cables until after the transformer has been set. CNP will terminate the secondary cables in the transformer.**
- C. To accommodate future expansion, the Customer may install up to 14-4" secondary conduits into the transformer pad.
- D. On installations utilizing a CTB, CNP shall furnish, own, install and terminate the secondary cable from the transformer to the CTB at the Customer's expense. The Customer shall furnish, install, own and maintain the CTB, the CTB pad, and 14-4" conduits from the secondary opening of the transformer pad to the CNP side of the CTB pad. The Customer shall install and terminate the secondary cable from its side of the CTB to its switchgear. Typical three-phase CTB drawings are available on request. The Customer shall submit three (3) drawings of the proposed CTB to the MUG representative for approval prior to fabrication.
- E. The initial available short circuit current is 16,957 amperes symmetrical, with an X/R ratio of 3,0.
- F. The ultimate available short circuit current is 56.523 amperes symmetrical, with an X/R ratio of 9.6.
- G. The Customer shall supply shielded cable and electrical stress relief devices for its secondary cable; CNP will install these devices in the secondary compartment of the transformer. The Customer shall also provide one compression lug per cable and CNP will make the final connections. CNP will ground this cable shield in the transformer; the Customer shall not ground the cable shield at its switchgear.

- H, Customers receiving electrical service from multiple sources will be required to install a permanent plaque or directory at each source in accordance with Article 230.2 of the National Electrical Code (NEC). These plaques are to signify that there is more than one electrical service to the building. The Customer shall keep the power from each source separate throughout its entire electrical system. This requirement is for the life of the service.
- I. A protective device coordination study for the Customer's service relative to CNP's protective devices may be requested by contacting the MUG representative.

**ACCESS**

The Customer must provide a twelve foot (12') minimum width, fourteen foot (14') minimum vertical clearance, all weather, vehicle access road designed for HS-20-44 loading as recognized by the American Association of State Highway Officials (AASHO), for CNP personnel and equipment ten feet (10') past the side of the proposed pad mounted equipment location. In addition, the area adjacent to the pad must be designed for HS-20-44 loading to allow for outrigger placement. If the access road and the pad mounted equipment location have not been completed and passed final inspection (see **Final Inspection, page 7**) at the time the Customer requests the equipment be set, the equipment can only be set under the following conditions.

- A. MUG has determined that the access route is dry and readily accessible to CNP's normal installation equipment.
- B. The Customer shall be responsible for all expenses associated with the repair and/or replacement of CNP pad mounted equipment damaged by additional construction activity. Damage to CNP equipment may result in delays to the Customer's requested service date.
- C. CNP will not complete the underground construction (i.e. pulling & terminating cable, energizing the service, etc.) until the access road and pad mounted equipment location have passed final inspection (see **Final Inspection, page 7**).

The Customer must provide a fifty foot (50') minimum vertical clearance over all equipment pads for CNP trucks and equipment.

The Customer must maintain these requirements for the life of the service.

CNP will utilize the Customer's parking and driveway facilities for the required access.

**EMERGENCY GENERATION AND SECONDARY LOAD TRANSFER**

Customer installed Emergency Generators and/or Secondary Load Transfer schemes shall meet the requirements of the CNP Specification on Customer Emergency Generation and Secondary Load Transfer, Specification 007-231-82, latest revision (attached). This requirement is for the life of the service.

Generator exhaust must be located and/or directed away from CNP's equipment.

## **CUSTOMER GENERATION ON THE DISTRIBUTION SYSTEM (DG/DER)**

Customer installed Generation on the Distribution System (DG/DER) shall meet the requirements of the CNP Specification on Customer Generation on the Distribution System, Specification 007-231-76, latest revision is available upon request. This requirement is for the life of the service.

If the Customer desires, either now or in the future, to operate power generating equipment of any kind, including, but not limited to solar, wind or thermal, The Customer shall complete, sign, and submit the standard form approved by the PUCT for an application for interconnection and parallel operation with the CNP System to the CNP-designated distributed generation contact person. The Customer shall not commence parallel operation of their generating facilities with the CNP System until final written approval has been given by CNP. Certain protective devices, such as circuit breakers, reclosers, and relays, specified by CNP shall be installed by the Customer at the location where the Customer desires to operate generating facilities in parallel with the CNP System. All costs resulting from additional protective relaying requirements shall be borne by the Customer.

## **HARMONIC DISTORTION**

The Customer shall meet the requirements of the CNP Specification on Limitation of Harmonic Distortion on the Distribution System, Specification 007-231-83, latest revision (available upon request). This requirement is for the life of the service.

## **METERING**

- A. The Customer's metering arrangement must comply with CNP Service Standards, Section 400 or 500 as applicable.
- B. The metering current and potential transformers (CT's and PT's) will be installed in the secondary compartment of the transformer provided all service from the transformer is through one meter. If all the services are not through one meter, the Customer shall inform the MUG representative, so that alternate metering provisions can be arranged (separate CT and PT cans as required for each service).
- C. All Retail Customers must be metered separately.
- D. Meter Room and/or Modular Meter installations must have CNP written approval prior to the purchase/installation of materials/equipment. The Customer must submit applicable drawings to the MUG representative for approval. Indoor installations must also comply with the CenterPoint Energy Meter Room Specification (available upon request).

## **FACILITIES INSTALLED BY THE CUSTOMER**

All facilities are to be installed per the attached construction specifications. The Customer or its contractor is to request a preconstruction meeting prior to starting the required underground construction by visiting the website shown below.

All facilities shall be inspected by CNP after the conduit is installed, pads are formed, reinforcing rods installed, etc. but prior to the pouring of concrete. CNP recommends that the Customer complete the pouring of concrete on the day the facilities are inspected and approved. The Customer will ensure that all inspected and approved facilities remain in the approved condition until the concrete pour has been completed. If there is damage to the inspected and approved facilities prior to the pouring of concrete, the facilities must be re-inspected by CNP before the Customer begins

the pouring of concrete. CNP reserves the right to require the Customer to break out any unapproved concrete pours at its expense.

CNP will make a reasonable attempt to complete all inspection requests. To ensure that inspection requests can be fulfilled, they should be made prior to 5 p.m. the business day before the requested inspection to Major Underground Projects at <https://www.centerpointenergy.com/en-us/pages/mugform.aspx>. Job # 116180825 must be provided as the inspection identification number.

**DUCTBANK INSTALLATION**

All proposed conduit for CNP’s use is to be installed in straight runs, unless otherwise indicated on CNP drawings. Any conduit bends must be installed with a twenty foot (20’) minimum radius, unless indicated otherwise on CNP drawings. Conduit turn-ups into any equipment pad and/or pole pedestal must have a minimum five foot (5’) radius. Any deviations from these requirements shall have written approval from the MUG representative prior to installation.

During installation, the minimum depth for a conduit run must be referenced to the final grade.

The Customer is to delay installation of approximately the last twenty feet (20’) of the conduit run and the pole pedestal to any terminal pole until the pole has been set by CNP. Before trenching to the base of any terminal pole, the Customer must securely brace the pole. The Customer must request staking and setting of any terminal pole by contacting the Service Area Consultant.

The Customer must provide a jet line in each conduit installed. This jet line shall extend a minimum of seven feet (7’) beyond the end of each conduit.

For installations not utilizing a blanket easement document (see **Easement Instrument section, page 8**), the Customer shall also install a #14 American Wire Gage (AWG) or larger aluminum or copper 600 volt insulated conductor in one of the conduits. The conductor must be electrically continuous. For manhole installations, the electrically continuous conductor must also be looped through each manhole lid and tied to a concrete insert in the neck of each manhole. This conductor is to facilitate surveying of the duct bank by CNP. The duct bank cannot be surveyed until this conductor is installed as prescribed. The Customer must take adequate measures to assure the conductor will be in place until all necessary surveying is completed. After surveying of the duct bank is completed, but prior to CNP installing any primary cable, the Customer may retrieve its conductor at its option.

Conduit ends shall be plugged with a duct cap or other type capping device. The use of rags to plug conduits is not acceptable. If the conduit is installed in stages, the Customer must keep each section of conduit capped until the new section is installed. If, prior to CNP using any conduit, the conduit is found to be blocked, the Customer will be responsible, at its expense, for removing the obstruction.

**CLEARANCES**

Final approval for the location of the pad mount equipment and/or other proposed electrical installation is contingent upon proper clearance, as determined by CNP, from cooling towers, vents, buildings, structures, etc., and other underground utilities. It is in the Customer’s and CNP’s best interest to have all service equipment in a contamination-free environment to avoid unscheduled outages and/or premature equipment failures. Therefore, prior to any construction, the Customer shall inform the MUG representative of any existing or future contamination or pollutants which may affect the equipment so that necessary clearances can be secured.

The MUG representative shall be notified promptly if the Customer intends to install any obstructions such as walls, hedges, bushes, trees, etc., around the transformer and/or any associated equipment so that additional clearances and access can be secured. Any proposed enclosure surrounding CNP's equipment must be louvered, and both a profile and a cross-sectional view of the proposed louvered enclosure shall be submitted for approval prior to installation.

If, in the future, there is a problem with contamination of CNP's equipment, or proper clearances are not maintained, CNP reserves the right to relocate the equipment at the Customer's expense.

CNP will not allow other facilities to pass beneath its equipment pads. A one foot (1') minimum horizontal clearance shall be maintained between CNP pads and all other facilities.

A one foot (1') minimum vertical clearance must be maintained between CNP duct banks and all non-CNP facilities crossing the duct bank.

A five foot (5') minimum horizontal clearance must be maintained between CNP duct banks and other facilities running parallel to the duct bank. CNP will not allow joint trenching between CNP duct banks and other facilities.

**ELEVATION REQUIREMENTS**

The minimum elevation requirement for the top of the equipment pads shall be fifteen feet (15') above mean sea level and two feet (2') above the documented 500-year floodplain. The Customer must provide equipment pads that meet these elevation requirements. The easement (minimum working clearance) around the equipment pads shall also be brought up to the above mentioned minimum elevation, as outlined on the equipment pad detail specification. The Customer must provide stairs outside of the easement area, and a guardrail around the perimeter of the elevated area as required by OSHA and the governing City or County building code. The easement area surrounding the equipment pads shall not have a slope greater than 2%. The pad and minimum easement elevations (minimum working clearance) must be verified at the time of installation.

**VENTILATION REQUIREMENTS**

Any proposed barriers or enclosures in the vicinity of the equipment pads shall maintain a minimum of 50% free air flow. Prior to construction, the Customer shall submit drawings of the proposed barriers or enclosures to MUG Projects Representative for approval.

**FINAL INSPECTION**

After the Customer has advised CNP that all "Customer installed" facilities pertaining to this service arrangement have been completed and inspected, a final on-site inspection will be made by a MUG representative. This final inspection will verify that all Customer installed facilities are in accordance with these Supplemental Terms and Conditions. The Customer (or its contractor) and the Service Area Consultant will be advised of any needed corrections and/or changes. When all necessary corrections and/or changes have been completed, CNP's portion of the construction may begin.

**EASEMENT INSTRUMENT**

CNP will prepare an instrument for easements to be granted by the property owner after all installations for CNP's use have been completed according to these Supplemental Terms and Conditions. The service cannot be energized until CNP has accepted the signed instrument for all easements.

The Customer also has the option of signing a blanket easement document. Use of the blanket easement allows the service to be energized before the final signed instrument for all easements has been completed. The Customer may request use of the blanket easement document by contacting the MUG representative.

If the Customer signs a blanket easement, CNP will prepare a new, defined easement described by a sealed survey sketch. However, the Customer must execute the defined easement and return executed defined easement to CNP within 90 days of receipt.

CNP will release the blanket easement upon execution and delivery of the new defined easement by the Customer.

If the Customer, its successors or assigns should, at any future date after the 90-day expiration, request that the easement be further defined, CNP will, at the Customer's expense, prepare a new, defined easement described by a sealed survey sketch.

CNP will need access to and from the proposed easements. CNP will use these easements, as shown on the attached sketches, for the purposes of erecting, installing, operating, maintaining, replacing, inspecting and removing electrical distribution facilities. The Customer shall keep these easements free and clear of any obstructions (trees, shrubs, other structures, etc.) that may endanger or interfere with the efficiency, safety, and proper operation of the proposed facilities for the life of the service.

**CUSTOMER AS GOVERNMENTAL ENTITY**

Customer represents and warrants that it is a governmental entity, and that as a governmental entity it is subject to constitutional and statutory limitations on its ability to be bound by certain terms and conditions herein or in CNP's Tariff for Retail Delivery Service, which may include terms and conditions relating to: liens on government property; disclaimers and limitations of warranties; disclaimers and limitations of liability for damages; waivers, disclaimers, and limitations on legal rights, remedies, requirements, commitment of future funding, and processes; limitations of time in which to bring legal action; control of litigation or dispute resolution; indemnities; and confidentiality of information, and to the extent that any such provisions would violate any such restrictions, Customer will not be bound by such provisions. Any terms and conditions herein relating to limitations of the type described in this section will only be binding on Customer to the extent they are valid and enforceable under all applicable laws, including all state and federal laws, rules and regulations, the constitutions of the United States and the State of Texas and the laws of the United States and the State of Texas.



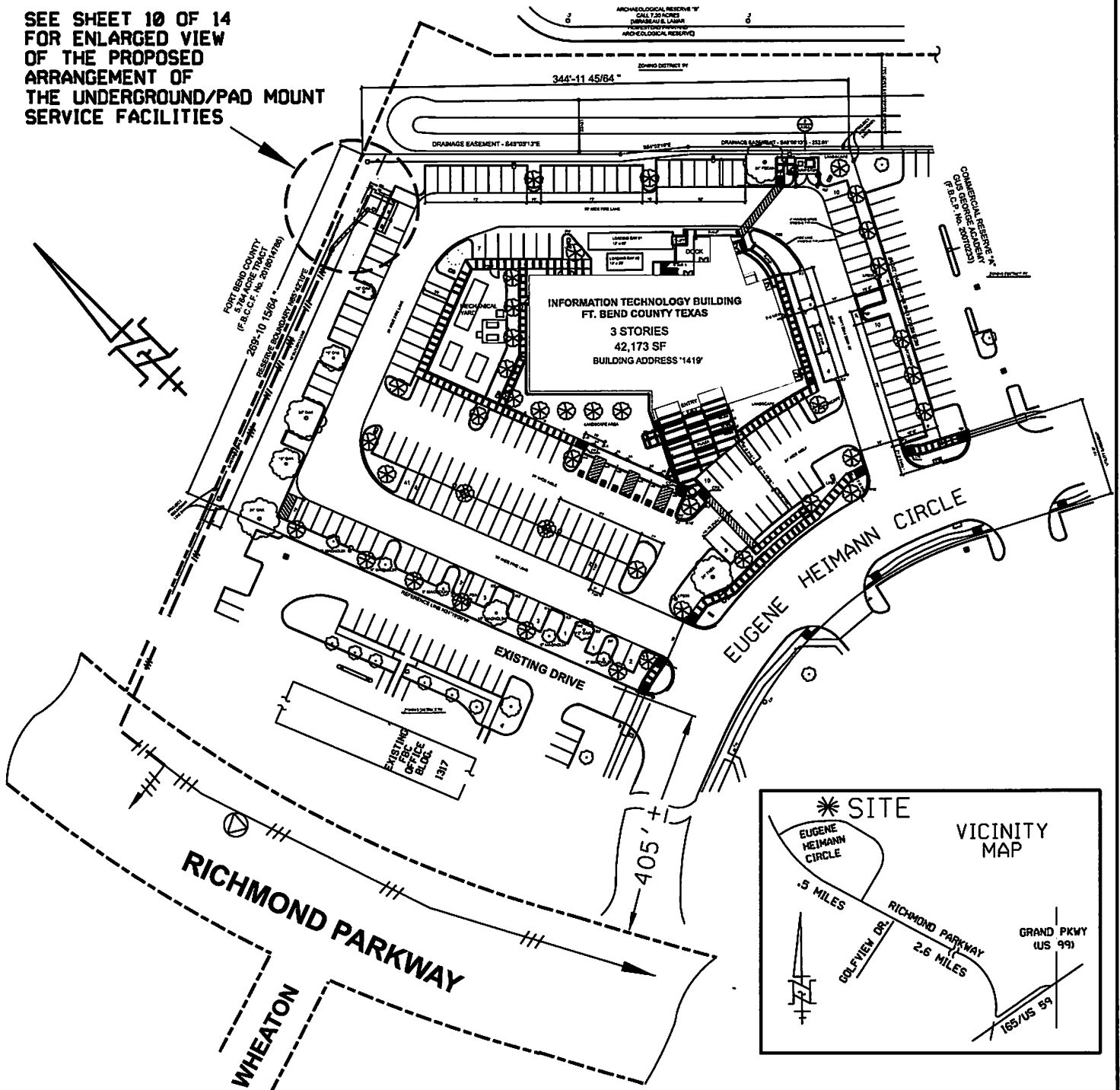
GENERAL LOCATION SKETCH

LAMBERT	SECTION	KEY MAP	FUNCTIONAL LOCATION	SCALE	CIRCUIT	ORDER NO.
4449	D2	605H		N.T.S.	CRB41	

FORT BEND COUNTY (CUSTOMER) AND/OR ITS CONTRACTOR IS TO REQUEST A PRECONSTRUCTION MEETING PRIOR TO STARTING CONSTRUCTION BY VISITING [HTTP://WWW.CENTERPOINTENERGY.COM/EN-US/PAGES/MUGFORM.ASPX](http://www.centerpointenergy.com/en-us/pages/mugform.asp)

CENTERPOINT ENERGY (CNP) TO UTILIZE THE CUSTOMER'S DRIVES AND PARKING FACILITIES FOR EQUIPMENT ACCESS.

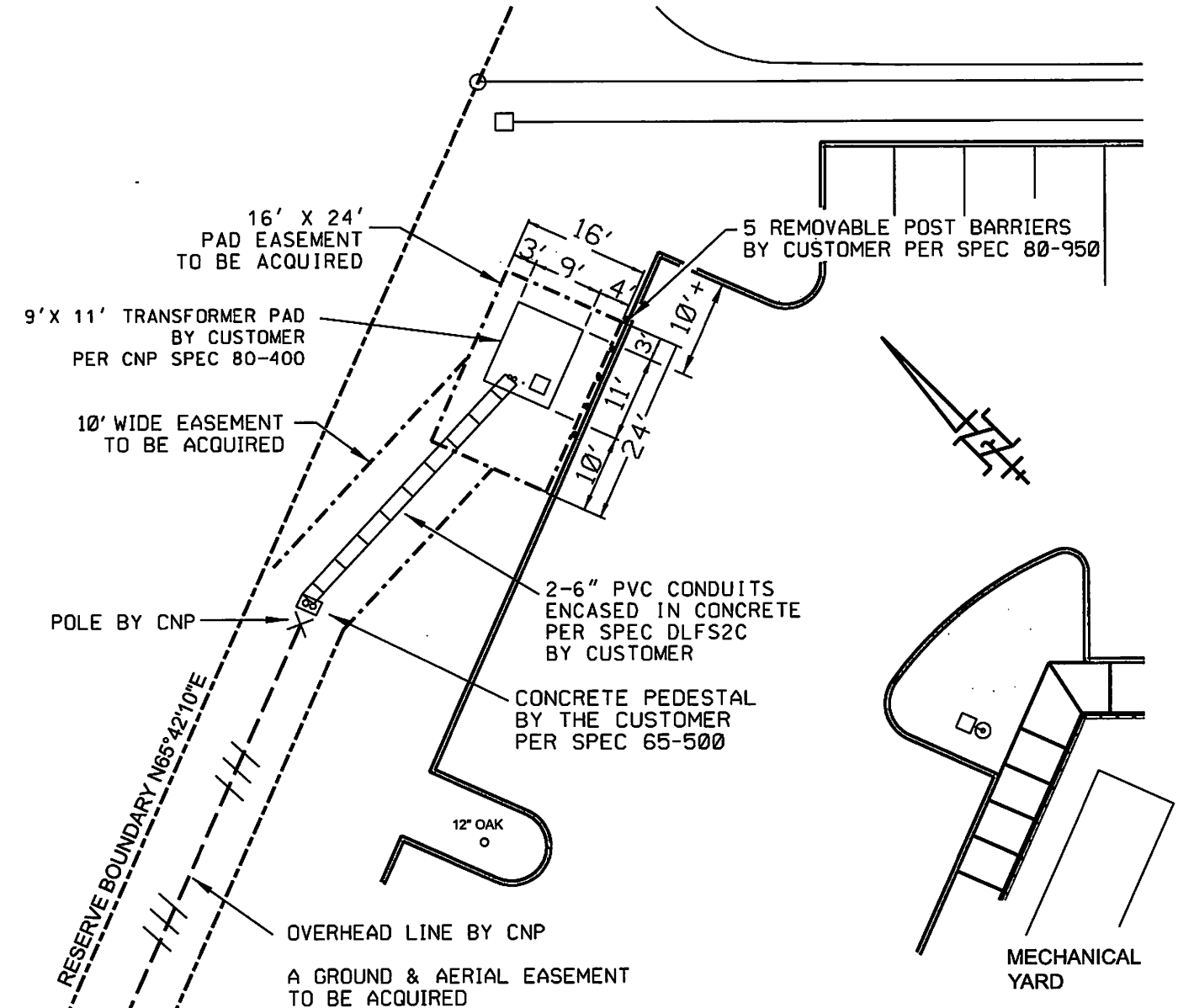
SEE SHEET 10 OF 14 FOR ENLARGED VIEW OF THE PROPOSED ARRANGEMENT OF THE UNDERGROUND/PAD MOUNT SERVICE FACILITIES





GENERAL LOCATION SKETCH

LAMBERT	SECTION	KEY MAP	FUNCTIONAL LOCATION	SCALE	CIRCUIT	ORDER NO.
4449	D2	605H		N.T.S.	CRB41	



NOTES:

NO OTHER UTILITIES ARE TO RISER UP THE TERMINAL POLE

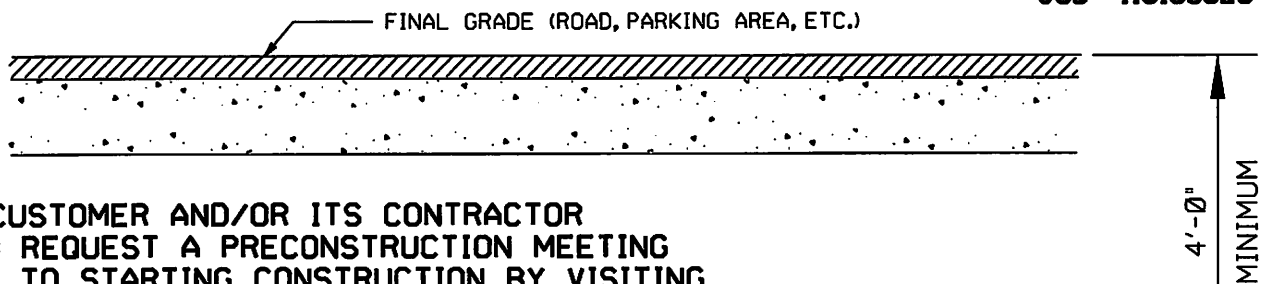
TERMINAL POLE MUST BE IN PLACE BEFORE THE CONDUIT BENDS ARE TURNED UP.

THE PRIMARY DUCTBANK REQUIRES FIVE FEET OF HORIZONTAL CLEARANCE FROM ADJACENT UTILITIES AND A ONE FOOT VERTICAL CLEARANCE WHEN CROSSING UTILITIES.  
(SEE NOTES 10 & 11, SHEET 11 OF 14)

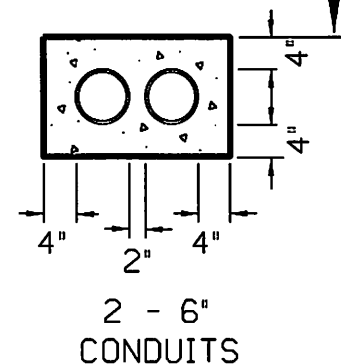
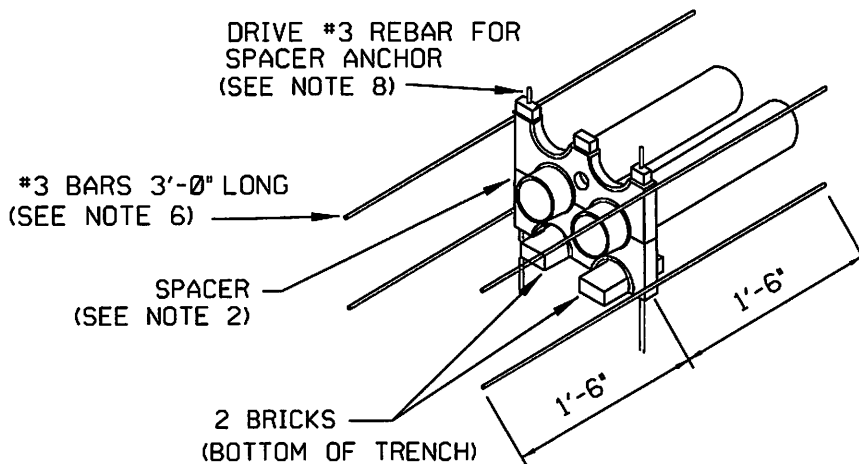
NOTES (CONTINUED):

AN ALL-WEATHER ACCESS ROAD RATED FOR HS-20-44 LOADING IS A REQUIREMENT IS FOR THE LIFE OF THE SERVICE.

THE METER TO BE MOUNTED ON THE TRANSFORMER



THE CUSTOMER AND/OR ITS CONTRACTOR IS TO REQUEST A PRECONSTRUCTION MEETING PRIOR TO STARTING CONSTRUCTION BY VISITING [HTTP://WWW.CENTERPOINTENERGY.COM/EN-US/PAGES/MUGFORM.ASPX](http://www.centerpointenergy.com/en-us/pages/mugform.aspx)

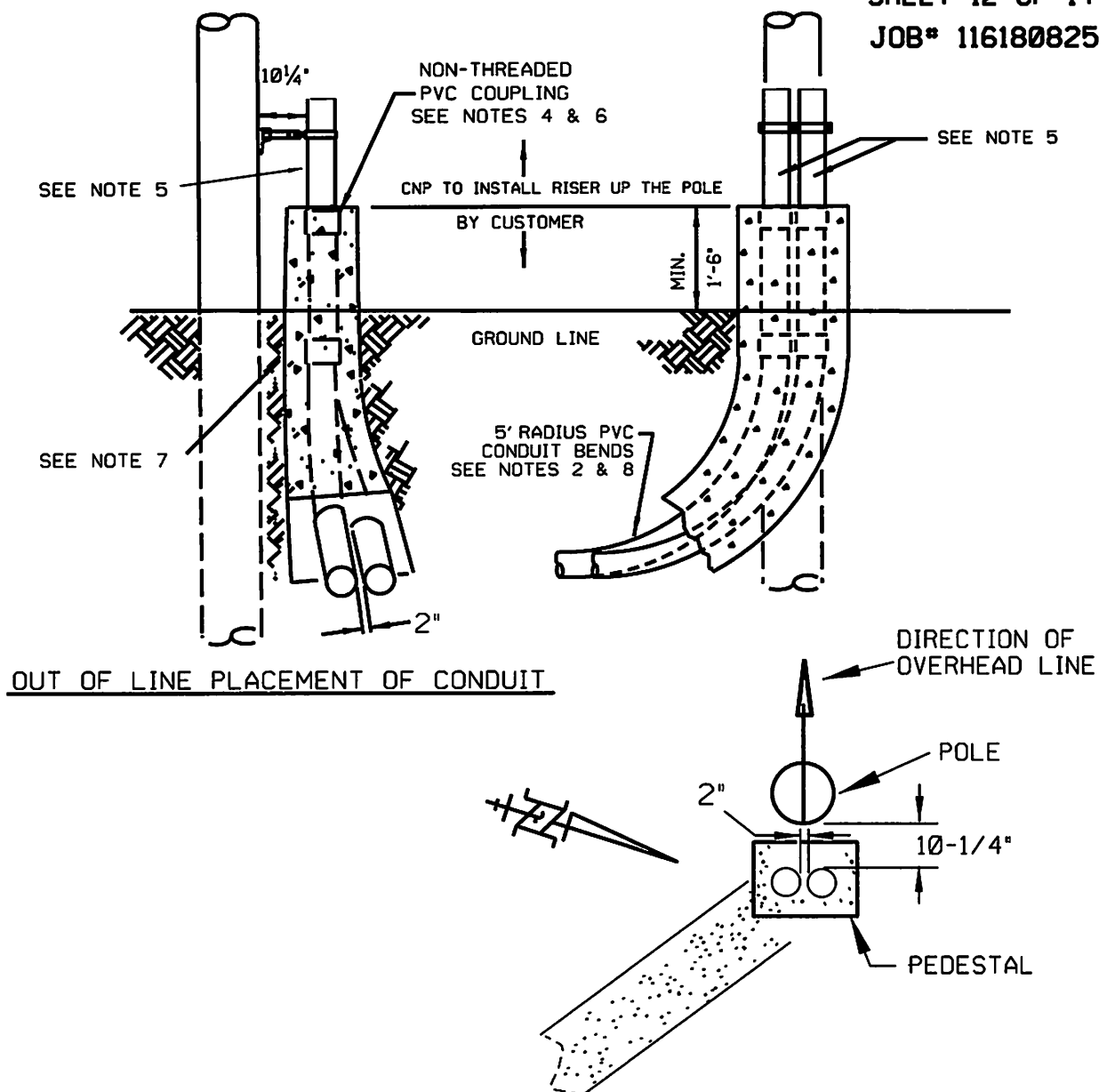


NOTES:

1. CONDUIT TO BE PVC, MINIMUM GRADE TYPE EB.
2. SPACERS SHOULD BE INSTALLED NOT MORE THAN 10'-0" APART.
3. INSPECTIONS BY CNP ARE REQUIRED BEFORE EVERY CONCRETE POUR. SHEETS 5-6 OF 14 DETAIL HOW TO REQUEST AN INSPECTION.
4. ALL EXTERIOR CONCRETE COVER DIMENSIONS ARE MINIMUM.
5. CONCRETE SHALL BE IN ACCORDANCE WITH CNP SPECIFICATION 007-221-01, LATEST REVISION.
6. PLACE REINFORCING BARS IN 4 CORNERS OF THE CONCRETE WHERE SPACERS ARE USED.
7. ON COLD JOINT CONCRETE POUR USE #5 REBAR (3'-0" IN LENGTH, EXPOSED 1'-6").
8. LENGTH OF REBAR FOR SPACER ANCHOR WILL VARY PER DUCT BANK HEIGHT.
9. CONDUITS ENDS SHALL BE PLUGGED WITH A DUCT CAP OR OTHER TYPE OF CAPPING DEVICE.
10. A ONE FOOT (1') VERTICAL CLEARANCE MUST BE MAINTAINED BETWEEN CNP'S DUCTBANK AND ALL NON-CNP FACILITIES CROSSING THE DUCTBANK.
11. A FIVE FOOT (5') HORIZONTAL CLEARANCE MUST BE MAINTAINED BETWEEN CNP'S DUCTBANK AND ALL NON-CNP FACILITIES RUNNING PARALLEL TO THE DUCTBANK (JOINT TRENCHING NOT PERMITTED).
12. INSTALL JET LINE IN ALL CONDUITS AND A #14 AWG WIRE IN ONE CONDUIT.

THREE PHASE DUCTBANK  
FEEDER

BASED ON DISTRIBUTION STANDARD DLFS2C

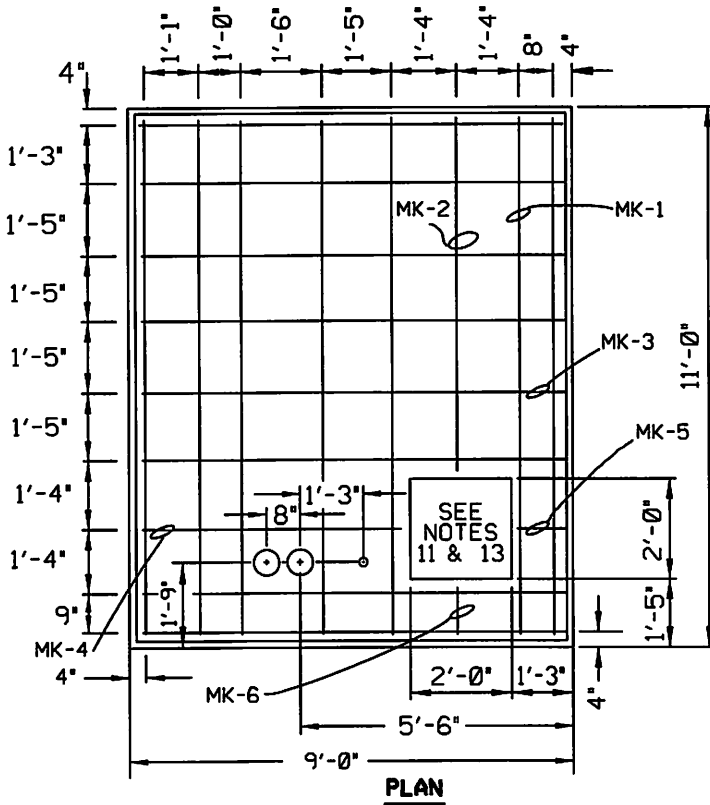


## NOTES:

1. CNP INSPECTION OF PEDESTAL FORM IS REQUIRED BEFORE CONCRETE POUR. SHEETS 5-6 OF 14 DETAIL HOW TO REQUEST AN INSPECTION.
2. CONDUIT BENDS AT TERMINAL POLE SHALL BE PVC.
3. INSTALL CONDUIT BENDS TO THE BASE OF POLE. ADD PORTIONS OF STRAIGHT CONDUIT TO OBTAIN SPECIFIED HEIGHT OF PEDESTAL FROM FINAL GRADE.
4. GLUE COUPLING TO THE CONDUITS EXTENSIONS.
5. INSERT, BUT DO NOT GLUE, A SHORT PIECE OF SCRAP PVC AS AN AID IN SECURING CONDUITS AND TO MAINTAIN 10 1/2 INCH SPACING FROM THE POLE.
6. FORM PEDESTAL SO THAT COUPLINGS ARE ALSO ENCASED IN CONCRETE.
7. FORM PEDESTAL SO THAT CONCRETE DOES NOT CONTACT THE POLE.
8. ALL CONDUITS SHALL HAVE A MINIMUM 4 INCHES OF CONCRETE COVER.

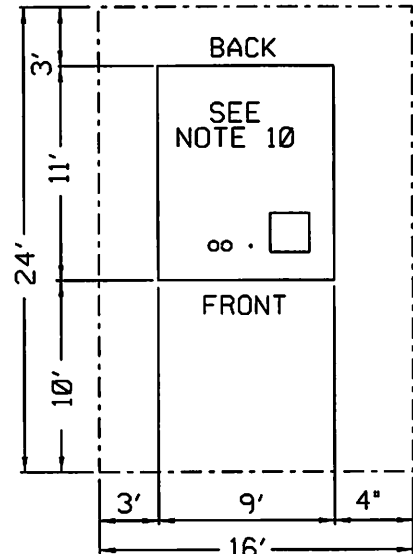
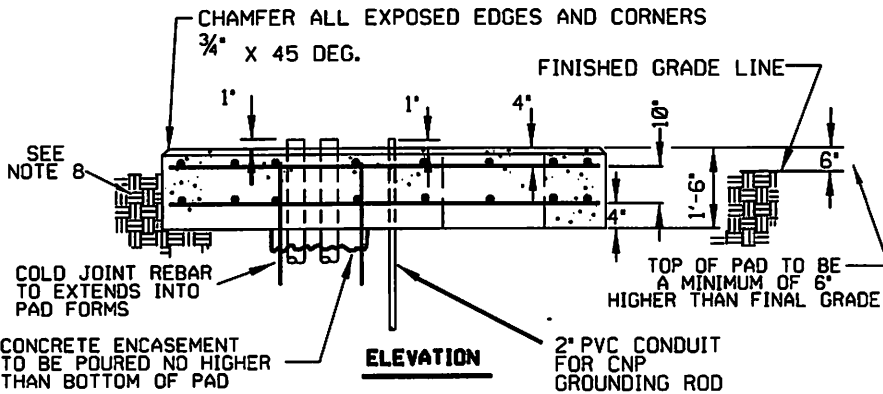
**TERMINAL POLE CONDUIT  
PLACEMENT 12KV & 35 KV**  
BASED ON DISTRIBUTION STANDARD 65-500A

930488/989897



REINFORCING SCHEDULE PER FOUNDATION				
MARK	QTY.	SIZE	LENGTH	REMARKS
MK-1	14	#7	10'-6"	STRAIGHT
MK-2	2	#7	7'-0"	STRAIGHT
MK-3	16	#7	8'-6"	STRAIGHT
MK-4	2	#7	5'-3"	STRAIGHT
MK-5	2	#7	0'-9"	STRAIGHT
MK-6	2	#7	1'-0"	STRAIGHT

MATERIAL ESTIMATE PER FOUNDATION	
DESCRIPTION	QUANTITY
REINFORCING STEEL #7	636 LBS
CONCRETE (5 SACK)	5½ CU. YDS.
TYPE EB OR BETTER PVC CONDUIT, 90 DEG, 60" R	2
2" PVC CONDUIT	5 FT



**MINIMUM EASEMENT REQUIREMENTS**

**EQUIPMENT WEIGHT 43,000 LBS MAXIMUM**

CONCRETE ENCASEMENT TO BE POURED NO HIGHER THAN BOTTOM OF PAD  
CONDUITS TO BE ENCASED WHEN PAD IS POURED

**NOTES:**

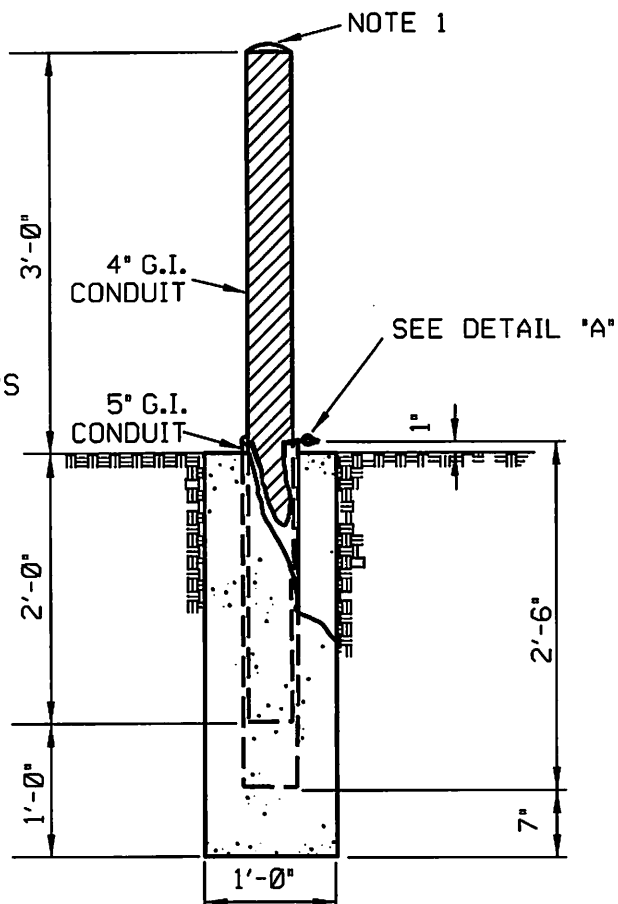
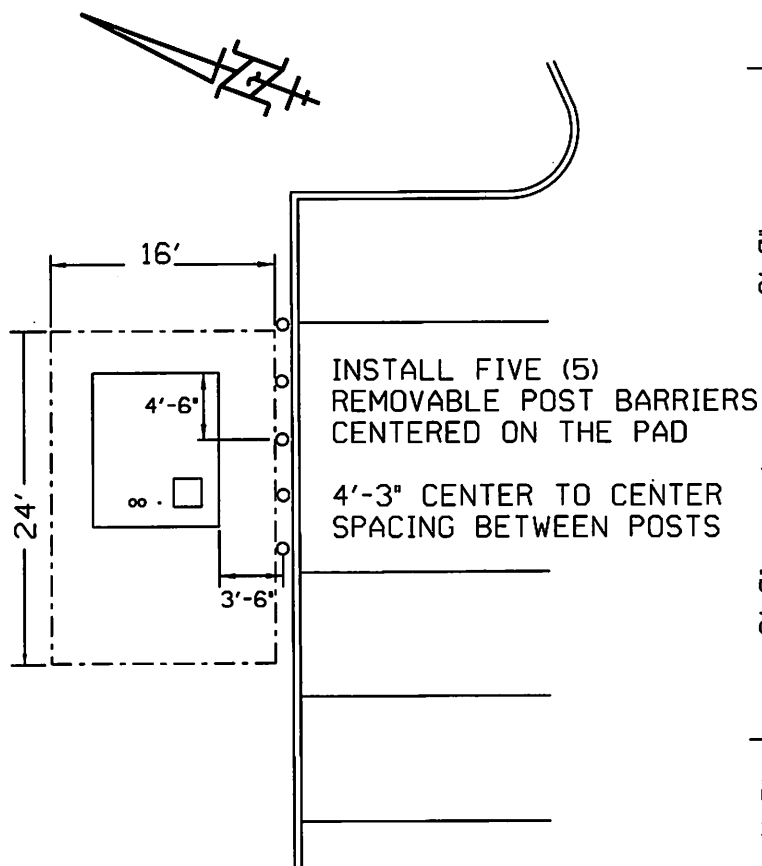
- 1A. A CNP INSPECTION IS REQUIRED PRIOR TO CONCRETE POUR.
18. CONCRETE SHALL BE IN ACCORDANCE WITH CNP SPECIFICATION 007-221-01, LATEST REVISION (MINIMUM COMPRESSION IN 28 DAYS, 3000 PSI).
2. ALL DIMENSIONS ON REINFORCING BARS ARE TO THE CENTER OF BARS.
3. REINFORCING STEEL SHALL BE INTERMEDIATE GRADE DEFORMED BARS IN ACCORDANCE WITH A.S.T.M. SPECIFICATION A-615, GRADE 60, OR BETTER.
4. ALL SPLICES IN REINFORCING SHALL LAP A LENGTH EQUAL TO 24 BAR DIAMETERS.
5. CONCRETE SHALL BE THOROUGHLY WORKED AROUND REINFORCING, ANY EMBEDDED FIXTURES AND INTO ALL CORNERS OF FORMS.
6. IF REQUIRED, GROUT SHALL BE A MIXTURE OF 1 PART CEMENT TO 2 PARTS SAND WITH ENOUGH WATER TO PRODUCE A WORKABLE MIXTURE.
7. CONCRETE IS TO BE POURED ONLY WHEN THE ATMOSPHERIC TEMPERATURE IS A MINIMUM 40°F.(5°C.) AND RISING.
8. STRIP BACK ALL VEGETATION AND APPROXIMATELY 12" OF TOP SOIL. REMOVE ALL LOOSE CLOUDS AND STONES.  
**BACKFILL AND THOROUGHLY COMPACT ALL TRENCHES AND HOLES BEFORE CONCRETE IS PLACED.**

**NOTES (CONTINUED):**

9. REINFORCING SHALL HAVE A MINIMUM OF 2½" CONCRETE COVER.
10. SLOPE PAD 1" FRONT TO BACK.
11. THE SQUARE OPENING IS FOR THE CUSTOMER'S SECONDARY CONDUITS.
12. CNP WILL NOT ALLOW OTHER FACILITIES TO PASS BENEATH ITS EQUIPMENT PADS. A ONE FOOT MINIMUM HORIZONTAL CLEARANCE SHALL BE MAINTAINED BETWEEN CNP PADS AND ALL OTHER FACILITIES.
13. THE SECONDARY OPENING IS TO BACKFILLED WITH SAND TO WITHIN 4" OF THE TOP OF THE PAD.
14. TIE TRANSFORMER REINFORCING MAT TO THE COLD JOINT REBAR.

**500-5000 KVA PMT FOUNDATION, 12KV & 35KV**

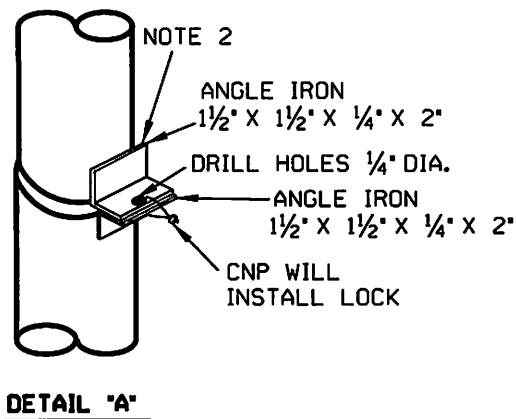
**BASED ON DISTRIBUTION STANDARD 80-400**



**PROTECTIVE BARRIER  
(REMOVABLE)**

**NOTES:**

1. 4" G.I. CONDUIT TO BE FILLED WITH CONCRETE.
2. ANGLE TO BE WELDED TO G.I. CONDUIT. ALL EXPOSED METAL TO BE PAINTED WITH GALVANOX PAINT.
3. SEAL GAP BETWEEN CONDUITS WITH DUCT SEAL FOR WATER TIGHT FIT.
4. USE 5" PLUG TO PREVENT CONCRETE FROM COMING UP 5" G.I. CONDUIT.



**PROTECTIVE BARRIER  
(REMOVABLE)**