

essence of this Agreement, as amended, that County shall have available the total maximum sum of \$1,369,837.40 specifically allocated to fully discharge any and all liabilities County may incur under the Agreement, as amended.

AIG Tech does further understand and agree, said understanding and agreement also being of the absolute essence of the Agreement, as amended, that the total Maximum Compensation that AIG Tech may become entitled to and the total maximum sum that County may become liable to pay to AIG Tech under the Agreement, as amended, shall not under any conditions, circumstances, or interpretations thereof exceed \$1,369,837.40.

3. **Certain State Law Requirements for Contracts.** The contents of this Section are required by Texas law and are included by County regardless of content for purposes of Sections 2252.152, 2271.002, and 2274.002, Texas Government Code, as amended, AIG Tech hereby verifies that AIG Tech and any parent company, wholly owned subsidiary, majority-owned subsidiary, and affiliate:

- A. Unless affirmatively declared by the United States government to be excluded from its federal sanctions regime relating to Sudan or Iran or any federal sanctions regime relating to a foreign terrorist organization, is not identified on a list prepared and maintained by the Texas Comptroller of Public Accounts under Section 806.051, 807.051, or 2252.153 of the Texas Government Code.
- B. If employing ten (10) or more full-time employees and this Agreement has a value of \$100,000.00 or more, AIG Tech does not boycott Israel and is authorized to agree in such contracts not to boycott Israel during the term of such contracts. "Boycott Israel" has the meaning provided in § 808.001 of the Texas Government Code.
- C. If employing ten (10) or more full-time employees and this Agreement has a value of \$100,000.00 or more, AIG Tech does not boycott energy companies and is authorized to agree in such contracts not to boycott energy companies during the term of such contracts. "Boycott energy company" has the meaning provided in § 809.001 of the Texas Government Code.
- D. If employing ten (10) or more full-time employees and this Agreement has a value of \$100,000.00 or more, AIG Tech does not have a practice, policy, guidance, or directive that discriminates against a firearm entity or firearm trade association and is authorized to agree in such contracts not to discriminate against a firearm entity or firearm trade association during the term of such contracts. "Discriminate against a firearm entity or firearm trade association" has the meaning provided in §2274.001(3) of the Texas Government Code. "Firearm entity" and "firearm trade association" have the meanings provided in §2274.001(6) and (7) of the Texas Government Code.

4. **Recitals.** The recitals set forth above are incorporated herein by reference and made a part of the Agreement, as amended.
5. **Human Trafficking.** BY ACCEPTANCE OF THIS FIRST AMENDMENT, AIG TECH ACKNOWLEDGES THAT FORT BEND COUNTY IS OPPOSED TO HUMAN TRAFFICKING AND THAT NO COUNTY FUNDS WILL BE USED IN SUPPORT OF SERVICES OR ACTIVITIES THAT VIOLATE HUMAN TRAFFICKING LAWS.
6. **Modifications and Conflict.** Except as modified herein, and by any previous amendments, the Agreement, shall remain in full force and effect and has not been otherwise modified or amended. If there is a conflict among documents that make up the Agreement, this First Amendment shall prevail with regard to the conflict.
7. **Certification.** By his or her signature below, each signatory individual certifies that he or she is the properly authorized person or officer of the applicable Party hereto and has the requisite authority necessary to execute this First Amendment on behalf of such Party, and each Party hereby certifies to the other that it has obtained the appropriate approvals or authorizations from its governing body as required by law.

{Execution Page Follows}

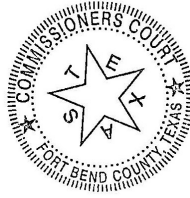
FORT BEND COUNTY, TEXAS

KP George
KP George, County Judge

September 24, 2025
Date

ATTEST:

Laura Richard
Laura Richard, County Clerk



AIG TECHNICAL SERVICES, LLC

Deepali Loney
Authorized Agent – Signature

Deepali Loney
Authorized Agent- Printed Name

CEO
Title

9/4/25
Date

APPROVED:

J. Stacy Slawinski
J. Stacy Slawinski, P.E., County Engineer

AUDITOR'S CERTIFICATE

I hereby certify that funds are available in the amount of \$ 1,369,837.40 to accomplish and pay the obligation of the Fort Bend County under this Agreement.

Robert E. Sturdivant
Robert E. Sturdivant, County Auditor

i:\agreements\2026 agreements\engineering\aign technical services llc (24-eng-100887-a1)\1st amendment to agmt.docx - JLF

EXHIBIT A-1

(Follows Behind)

June 12, 2025

Mr. Zach Jacobson, P.E., Env. Specialist
Project Manager
Binkley & Barfield, Inc.
1710 Seamist Dr., Houston TX 77008

RE: Proposal for Professional Engineering Services
23114 - Rogers Road Segment 2: From 6,000 ft West of FM 359 to FM 359; Supplement No. 1
Precinct 1
Fort Bend County

Dear Mr. Jacobson:

AIG Technical Services, LLC (AIG Tech), is pleased to submit our proposal for Professional Services to develop Plans, Specifications and Estimates (PS&E) for the above-referenced project. This supplemental proposal is based upon our project understanding and the terms and conditions of the Fort Bend County Standard Professional Services Agreement.

PROJECT UNDERSTANDING:

Project Assignment

The Design assignment will involve preparing Plans, Specifications and Estimates (PS&E) for a single contract and this supplement for the complete reconstruction and widening of Rogers Road – Segment 2, from 6,000’ west of FM 359 to the intersection with FM 359. This segment of Rogers Road is approximately 6,200 linear feet long, consisting of a two-lane asphalt pavement with roadside ditches, including two main culvert crossings. The contract supplement include the upgrade to a 4-lane divided concrete roadway with curb and gutter cross section (two 12-ft traffic lanes with 0.5-ft curb offsets for a total of 25-ft in each direction separated by a 32-ft raised median) with storm sewer and improved roadside ditches as needed,, acquisition of street right-of-way from 60 feet to a uniform width of 100 feet, potential detention pond, and Signal Warrant Study. The work includes control, design and metes and bounds surveys as well as coordination with adjacent designers, representatives for Fresno TX (City of Houston ETJ), and the Texas Department of Transportation (TxDOT) Houston District. The project does not appear to be located within the 100-year or 500-year floodplains based on the current published FEMA map: 48157C0315L revised 04/02/2014. As per BBI direction, this proposal includes the price to relocate the existing watermain and service connections to private property.

AIG Tech will adhere to the Fort Bend County Drainage District requirements, including providing a revised drainage impact analysis letter report and a practical drainage detention mitigation design to be prepared and included with the Preliminary Engineering Report.

AIG Tech understands that any necessary environmental services will be provided by Fort Bend County via an independent consultant and is thus environmental services are not part of this proposal. A stormwater pollution prevention report **is not** included in this proposal.

AIG Tech shall initiate coordination with TxDOT once BBI and Fort Bend County consider opportune and prepare the necessary exhibits to facilitate any permitting process.

AIG Tech shall prepare Design Exception Documentation as directed by BBI and Fort Bend County.

Introduction of the AIG Team (per Master Contract)

Management Structure (per Master Contract)

SCOPE OF BASIC SERVICES:

Basic services will generally follow the design process outlined in the Fort Bend County Engineering Department Engineering Design Manual (EDM), March 2022 Edition.

Preliminary Design Phase

AIG Tech will prepare the design to a 30% level of completion, based on collected preliminary topographic surveys. The 30% milestone will include a Preliminary Engineering Report (PER) documenting the analysis of up to two (2) alternate roadway options leading to a preferred design. Also included will be findings and recommendations for the final design phase, a roadway schematic layout, drainage impact analysis, detention recommendations and drainage report, ROW acquisition needs, identification of potential utility conflicts, preliminary construction cost estimate, and Design Exception Documentation.

AIG Tech will attend progress meetings with BBI.

Roadway

AIG Tech shall develop up to two (2) roadway alignment options at plan view level and recommend a preferred alternative based on geometry, utility, and environmental constraints. Roadway design shall comply with the latest edition of the AASHTO "Geometric Design of Highways and Streets". AIG shall advance the preferred alternative, identify ROW requirements, develop a preliminary roadway profile, and construction phase traffic control plan (for preferred alternative only), in accordance with the Fort Bend County Engineering Department EDM March 2022 Edition.

As part of the 30% drawing submittal, AIG Tech shall provide preliminary typical sections, project layout, roadway plan sheets, as well as identifying the total footprint of the proposed project.

Traffic (Signal Warrant Study)

AIG Tech shall collect, review, and evaluate all data collected at the FM 359 signalized intersection, including as-built plans and traffic signal timing data.

AIG Tech shall also:

- Perform turning movement counts at FM 359 signalized intersection during a weekday (Tuesday, Wednesday or Thursday) from 6:00 AM to 7:00 PM.
- Perform 24-hour traffic counts (15 minute and hourly intervals) at FM 359.

- Conduct site inspection at the study location and record traffic characteristics observed in the field. The field work may include, but is not limited to, taking measurements, locating utilities, locating existing signal equipment, identifying existing conditions, and taking digital photographs of the intersection (minimum of one photograph per approach).
- Collect and review historical crash data for 5 full calendar years (January 1st to December 31st).

AIG Tech shall conduct traffic signal warrant analysis and prepare a Signal Warrant Memo for the FM 359 signalized intersection for use in authorizing traffic signals and other recommendations for improving traffic operations. AIG shall utilize the Texas Manual of Uniform Traffic Control Devices (TMUTCD) and other applicable guidelines for the analysis:

- Prepare a condition diagram showing details from site inspection and field work conducted under data collection.
- Prepare site maps of all three study intersections. Information on the site map must include existing control devices at the intersection.
- Prepare signal warrant analysis report, which summarizes the findings of the traffic and pedestrian counts and field inventories for each location and the warrant study.

AIG Tech shall conduct capacity analysis for the FM 359 intersection and make recommendations for improving traffic flow. AIG Tech shall perform this study using the *TRB Highway Capacity Manual* to analyze and make appropriate recommendations. If microsimulation is required, AIG Tech shall develop and calibrate an existing condition model. AIG Tech shall analyze the data and prepare a capacity study report to summarize the findings and recommend improvements (if appropriate).

Utilities

The team shall research and obtain record documents for all known existing utilities within the road ROW and at approved Rogers Rd. at SH 359 realignment. AIG Tech will prepare and maintain utility log through the Final Design phase. AIG Tech will establish contact with utility companies and provide plan set roadway drawings to the applicable utility companies for their use in developing any utility adjustment plans. It is understood that AIG Tech will identify major utilities and coordinate directly with utility companies; BBI will assist in facilitating utility adjustment process during the construction phase as required to verify the utilities are relocated. AIG Tech to provide utility relocation plan review once plans are finalized by the utility entities.

Metes and Bounds Right of Way Taking Mapping (per Master Contract)

Geotechnical (per Master Contract)

Final Design Phase

Upon FBC concurrence and approval of **revised** PER, AIG Tech will proceed with completing the PS&E, including 70%, 95%, and 100% submittals to BBI. AIG Tech will address comments presented in the Preliminary Design Phase review meeting and provide responses to 70% and 95% BBI review comments. Per the Fort Bend County Engineering Department EDM March 2022 Edition, 70% and 95% submittals

shall include cover sheet, typical and non-standard cross-sections, overall project layout, survey control map, drainage area map with hydraulic calculations, plan and profile sheets, traffic control plan, storm water pollution prevention plan, cross sections at 100' intervals, specification table of contents, and bid form with estimated unit and total costs. A digital copy (Adobe Acrobat format, PDF) at each design milestone will be submitted for BBI's review in 11"x17" sheets including the drawings, cross sections at 100-foot intervals, Specifications Table of Contents (AIG to use Harris County Specifications - TxDOT Specifications to be used as necessary depending on FBC guidance), Construction Cost Estimate (PDF and Excel format), Bid Form (PDF and Excel format), KMZ file, and Review Checklists.

In addition to the 70% requirements, the 95% submittal shall also include general notes sheet, signals, signage and pavement marking plans, verification of earthwork quantities, with cross sections at 100-foot intervals, standard construction details, project manual, responses to 70% comments and 95% Review Checklist.

The 100% submittal shall consist of one sealed and signed set of drawings, along with a PDF submittal of the drawings, specifications, and estimate and shall be provided to BBI.

AIG Tech will provide monthly progress reports per BBI requirements.

Utilities

AIG Tech will identify all known existing utilities on the plan and utilities larger than 4" diameter in profiles. AIG Tech will coordinate with BBI's utility coordinator for the project and identify conflicts between the proposed improvements and the existing utilities. AIG Tech will submit each milestone submittal to utility companies if identified to be in conflict.

One watermain and new service connections adjustment plans are included as part of this proposal as potential additional services.

Drainage

AIG Tech will meet with and incorporate the Fort Bend County Drainage District requirements into preparation of the PS&E package. The drainage analysis will follow the effective Fort Bend County Interim Atlas 14 Design Criteria Manual per Fort Bend County Drainage District. Based on scoping discussions with the drainage district on other projects, it is understood a detailed drainage study is required that includes Data collection and review, Hydrology and Hydraulics analysis of the existing and proposed storm sewer, road side ditch and crossing culverts, and detention analysis accompanied by maps, exhibits, and other supporting documentation for the drainage study. The project does not appear to be in the 100-year, or 500-year floodplains based on the current published FEMA maps: 48157C00085M revised 01/29/2021. A FEMA submittal for the project is not included in this proposal. Providing or obtaining a "no impact letter" is not part of this proposal.

AIG Tech shall provide Storm Water Pollution Prevention Plan and details.

Traffic

AIG Tech shall prepare PS&E for the relocation and redesign of the existing traffic signal at the FM 359 intersection. Modifications will include signal phasing, vehicle detection, and other traffic signal infrastructure, as necessary.

Traffic design shall be conducted according to the TMUTCD. AIG Tech will not prepare pedestrian ramp designs and signing and pavement marking plans as part of the traffic signal plans (to be included in Roadway and S&PM plans, respectively). AIG Tech shall include the County's Approved Signal Equipment List upon request from the Program Manager.

- Perform field work that includes taking measurements, locating utilities, locating ROW, locating existing signal equipment, identifying existing signal phasing, identifying existing conditions, and taking digital photos.
- Prepare 70% submittal to include traffic signal plans, specifications (using Harris County and TxDOT Specifications) and construction cost estimate. Provide completed bid form and 70% review checklist.
- Prepare 95% submittal to include all 70% requirements, interim seal, standard construction details, responses to 70% comments and 95% review checklist.
- Prepare 100% submittal to be ready for project advertisement and should include all 95% requirements, recommended maximum number of calendar days for construction and 100% review checklist.

AIG Tech shall prepare the construction PS&E for traffic control and signing, and pavement markings according to the TMUTCD and Master Contract.

Based on scoping information received, a proposed 5 feet sidewalk is to be included in the project.

Fort Bend County Drainage District Coordination (per Master Contract)

TxDOT Coordination

AIG Tech to coordinate with TxDOT for Permitting, signal relocation, and provide exhibits and design plan documents, as needed.

Homeowners Association (HOA) Coordination (per Master Contract)

Fort Bend County Support (per Master Contract)

Additional Services (per Master Contract)

COMPENSATION

Except for mapping and parcel acquisition, the preliminary and final design efforts will be a lump-sum contract fee to be billed monthly based on a Schedule of Value basis and percent complete basis by work task.

A level of effort estimate is enclosed based on the scope of work described herein. The Lump-Sum Fee amount, including subconsultants, reimbursable expenses, additional services, and ROW mapping and parcel acquisition is \$ 464,918.20.

FEE SUMMARY		
	AIG TECH	WEISSER
ENGINEERING FEE - BASE SERVICES		
PHASE I - Preliminary Design Phase (PER)	\$ 232,913.20	\$ -
PHASE II - Final Design Phase	\$ 175,112.60	\$ -
SUBTOTAL BY FIRM	\$ 408,025.80	\$ -
SUBTOTAL BASE SERVICES	\$	408,025.80
ENGINEERING FEE - OPTIONAL ADDITIONAL SERVICES		
- Additional Parcel Mapping (approximately 18)	\$ -	\$ 45,000.00
- Water Line Relocation	\$ 11,892.40	\$ -
SUBTOTAL BY FIRM	\$ 11,892.40	\$ 45,000.00
SUBTOTAL ADDITIONAL SERVICES	\$	56,892.40
GRAND TOTAL (BASE AND ADDITIONAL SERVICES)	\$	464,918.20

SCHEDULE

AIG Tech anticipates the project will follow the following timeline schedule:

- a) Contract execution and NTP – Mid-June 2025
- b) Preliminary Parcel Layout – July 2025
- c) PER Meeting – Mid-August 2025
- d) Final metes and bounds parcel mapping; Begin ROW acquisition – Late September 2025
- e) 70% milestone submittal – Mid-December 2025
- f) 95% milestone submittal – Mid-April 2026
- g) Final submittal – End of June 2026
- h) Utility adjustment/relocation – begin Mid-January 2026
- i) Complete ROW acquisition; Complete Utility adjustment/relocations – November 2026

A detailed project design schedule is included as Attachment B.

ATTACHMENTS

Attachment A – AIG Technical Services, LLC’s Proposal Fee

Attachment B – Project Anticipated Design Schedule

Attachment C – Weisser Engineering Company’s Surveying Services Proposal

Thank you and Regards,



Gabriel Y. Johnson

Principal

AIG Technical Service, LLC

Gabe.Johnson@AIGtechnical.com

Cell: 832.875.5923



ATTACHMENT A

AIG Technical Services, LLC's Proposal Fee

TASK DESCRIPTION	PROJECT MANAGER	QUALITY MANAGER	PROJECT ADVISOR	SENIOR ENGINEER	PROJECT ENGINEER	DESIGN ENGINEER	ENGINEER IN TRAINING	SENIOR ENGINEERING SPECIALIST	SENIOR CADD/GIS OPERATOR	CADD OPERATOR	ADMIN/CLERICAL	TOTAL LABOR HRS. & COSTS	NO OF DWGS	LABOR HRS PER SHEET
PHASE I - PRELIMINARY DESIGN PHASE (PER)														
PROJECT MANAGEMENT														
Project Administration (3 Month Schedule)	3		1								4	8		
Coordination with the County & BBI (Bi-weekly for 3 months)	4		1	9	4							18		
Coordination with the Subconsultants (Weisser E&S; Associated Testing) (Weekly or as needed)	2				3							5		
Coordination with the City of Fulshear (Up to 2 Meetings)												0		
Coordination with TxDOT (Up to 4 Meetings)			2	2								4		
Coordination with neighborhood HOAs (Up to 1 Meeting each)												0		
Coordination with the Franchise Utilities (Up to 3 Meetings)												0		
DATA COLLECTION														
Obtain Survey Data (Aerial from other sources)												0		
Obtain As-builts, Drainage, Traffic, George Gordon Rd, Pecan Knoll Dr, & FM 359 plans & Misc. Details	1				2		2					5		
Obtain FEMA Model and available Drainage Reports from Drainage District												0		
Obtain Existing Utilities Information within ROW & Prepare Owner List												0		
Conduct Site Visit & Log Findings (Traffic Group)				1	3		4		2			10		
Review Survey and Coordinate Additional Survey Needs				1	2		2					5		
Review and Evaluate Preliminary Drainage Reports and Methodologies Provided by the County												0		
DESIGN & EXHIBITS														
Traffic Signal Warrant Analysis (Rogers Rd at FM 359)														
Data Collection														
Coordinate and review field traffic data				2	2		4					8		
Conduct field reconnaissance and review field inventory				4	4		4					12	N/A	N/A
Obtain and review crash data				2	4		6					12	N/A	N/A
Obtain and review available relevant studies				4	4		8					16	N/A	N/A
Signal Warrant Analysis														
Prepare site map					2		6					8	N/A	N/A
Prepare existing condition diagram					2		8					10	N/A	N/A
Review crash history and prepare crash data summaries				2	4							6	N/A	N/A
Prepare intersection collision diagram				2	2		8					12	N/A	N/A
Conduct intersection sight distance evaluations					2	2	4					8	N/A	N/A
Perform traffic signal warrant analysis				2	2	4	12					20	N/A	N/A
Capacity & Operational Analysis														
Prepare existing conditions (AM & PM peak periods) traffic models (Synchro) & summarize results				6	10		24					40	N/A	N/A
Identify operational improvements				2	4		8					14	N/A	N/A
Documentation														
Prepare draft and final tech memos	2			2	2	6	16			2		30	N/A	N/A
Prepare and document draft memo responses				2	2		4					8	N/A	N/A
Revise Alignment Options (Plan View ONLY, Up-to 2 Alignments)	1	2	1	2	8		16	8				38	3	13
Develop Preliminary Profile (For Preferred Alternative)	2	3		3	10		14	8				40	1	40
Prepare Preliminary Cross Sections (OpenRoads Model - Preferred Alt)	1	3		4	12	32		16				68	3	23
Develop Proposed ROW Lines	1		1	4	10		12					28	1	28
Develop Preliminary TCP Layout (Preferred Alt)	2	1	1	4	8		12	16				44	2	22
Conduct Preliminary Drainage Analysis for Preferred Alternative														
Delineate Overall Drainage Areas				4			16		16			36	N/A	N/A
Develop Existing and Proposed Land Cover and Flow Paths (Runoff Coefficient, Time of Concentration)				4			16		16			36	N/A	N/A
Obtain Rainfall Intensity Coefficients and Calculate Rainfall Intensities												0	N/A	N/A
Calculate Discharge for Design and Check Frequencies				4			10					14	N/A	N/A
Prepare Discharge Justifications		2	2	4			8					16	N/A	N/A
Perform H&H Analysis for Culvert Crossings (2) in Existing and Proposed Conditions				8			16					24	N/A	N/A
Perform H&H Analysis for Road Side Ditch in Existing Conditions												0	N/A	N/A
Perform H&H Analysis for Road Side Ditch in Proposed Conditions (storm sewer)				16			32					48	N/A	N/A
Perform H&H Analysis for Storm Sewer in Proposed Conditions (Up to 3 Alternatives)				64		32	128					224	N/A	N/A
Identify & Develop Preliminary Detention Pond Location (Up to 1 Alternatives)				24			72					96	N/A	N/A
Perform QA/QC for Hydrology and Hydraulics Analysis		12		12								24	N/A	N/A
Prepare Preliminary Exhibits for Waterline Relocation												0	15	0.0
Prepare Preliminary Exhibits for Franchise Utilities Coordination	1	2		4	10	8	12	8				45	8	5.6
Prepare Preliminary Exhibits for HOA/Neighborhood Coordination	1	1		3	6		8	6				25	4	6.3
Prepare Preliminary Exhibits for TxDOT Coordination (at FM 359)	1	1	1	4	8		10	8				33	3	11.0
PER														
Prepare 30% Plans (Typical Sections, Plan & Profile - proposed plan view only)	6		4	6	36		48	52				152	17	9
Prepare Executive Summary Letter	2		2	2	18		12					36	N/A	N/A

Prepare Preliminary Drainage Report			6	24				48		40			118	N/A	N/A
Prepare Preliminary Design Exemption	2		2	4		12		12					32	N/A	N/A
Attend a Preliminary Design Phase Meeting to Review PER				1									1	N/A	N/A
Preparation of Comment Responses	2			2		6		6					16	N/A	N/A
Final Submittal of Letter Report	1		2	4		5	8	10					30	N/A	N/A
Final Drainage Report			4	16				16		24			60	N/A	N/A
Prepare Final Design Exemption	1		1	4		8		10					24	N/A	N/A
Develop Preliminary Construction Cost Estimate	2			4		12		12					30	N/A	N/A
Signal Warrant Draft and Final Memo QA/QC		12											12	N/A	N/A
PER & Drainage Report QA/QC		40											40	N/A	N/A
HOURS SUB-TOTALS	38	79	31	278	229	100	668	122	98	0	6	1649			
CONTRACT RATE PER HOUR	\$75.00	\$80.00	\$100.00	\$72.00	\$64.00	\$56.00	\$38.00	\$54.00	\$50.00	\$42.00	\$28.00				
TOTAL LABOR COSTS	\$2,850.00	\$6,320.00	\$3,100.00	\$20,016.00	\$14,656.00	\$5,600.00	\$25,384.00	\$6,588.00	\$4,900.00	\$0.00	\$168.00		\$89,582.00		
SUBTOTAL - PHASE I													\$89,582.00		

TASK DESCRIPTION	PROJECT MANAGER	QUALITY MANAGER	PROJECT ADVISOR	SENIOR ENGINEER	PROJECT ENGINEER	DESIGN ENGINEER	ENGINEER IN TRAINING	SENIOR ENGINEERING TECH	SENIOR CADD OPERATOR	CADD OPERATOR	ADMIN/CLERICAL	TOTAL LABOR HRS. & COSTS	NO OF DWGS	LABOR HRS PER SHEET
PHASE II - FINAL DESIGN PHASE														
PROJECT MANAGEMENT														
Project Administration (8 Month Schedule)												0	N/A	N/A
Coordination with the County & BBI (Bi-weekly for 8 months)	2			1	2							5		
Coordination with the Subconsultants (Weisser E&S, Associated Testing) (Weekly or as needed)												0		
Coordination with the City of Fulshear on Design Exception (Up to 2 Meetings)	2		1									3		
Coordination with TxDOT (Up to 3 Meetings)	3		1									4		
Coordination with the Neighborhood HOAs (Up to 3 Meetings)												0		
Coordination with the Franchise Utilities (Up to 3 Meetings)												0		
FINAL DESIGN - CONSTRUCTION PLANS (70%, 95% & FINAL)														
Cover Sheet												0	1	0
Index of Sheets					0							0	1	0
General Notes	1			1	2	2						6	4	2
Survey Control Sheets												0	2	0
Existing Typical Sections												0	1	0
Proposed Typical Sections	1			1	2	2	8		12			26	1	26
Removal (Demolition) Plans				1	3		8					12	6	2
Roadway Plan & Profile (1"=40' Scale 11"x17") Sheets														
Rogers Rd	6		3	6	20	40	40	40				155	15	10
Cross Streets (4 Cross Streets)	2			4	6	12	12	12				50	4	13
Driveway Profile Table (24 Driveways)			1	1	2	4	6	4				18	1	18
Roadway Details (Intersection Grading Sheets)	2			2	6		8		8			26	4	7
Typical Roadway Standards	1			2	4		2		3			12	14	1
Overall Drainage Area Map												0	4	0
Interior Drainage Area map				1		8	8		8			25	8	3
Drainage Area Summary Sheet						2	2		2			6	2	3
Hydrology and Hydraulics Data Sheet				1		8	8		8			25	3	8
Culvert Crossing Layouts (2 Culverts)												0	2	0
Summary of Driveway Culvert Sheets												0		
Drainage Plan and Profile (Storm Sewer)(100' scale)				4		10			20			34	6	6
Storm Sewer Lateral Sheets				4		24	24		80			132	5	26
Show Utility Conflicts on Drainage P&P Sheets												0	15	0
Roadside Ditch Outfalls												0	15	0
Detention Pond Layouts, Plan, Profile, Sections												0	4	0
Drainage Standard Details						8			8			16	12	1
Develop a 3D Model of the Proposed Improvements Using ORD-DU (Ditch)				16		32	80					128	N/A	N/A
Traffic Control Plans														
Phasing Layout with General Notes	1			1	4		4	2				12	2	6
Typical Construction Cross-sections	2		2	2	6		8	4				24	2	12
Advanced Warning Signs Layouts												0	2	0
Phase One Layouts (1"=40' scale)	2		2	8	12		20	16				60	8	8
Phase Two Layouts (1"=40' scale)	2		2	8	12		20	16				60	8	8
TCP Standards & Details				2	4		4	2				12	15	1
Storm Water Pollution Prevention Plans (1"=40' Scale)	2			4	12		16	16				50	8	6

Storm Water Pollution Prevention Plan Details	1			1	2								8	2	4
Signing and Pavement Marking Plans (1"=40' Scale)	2			4	8	12	12	12					50	8	6
Signing and Pavement Marking Details	0				2	4		2					8	2	4
Signing and Pavement Marking Standards	1			2	2		3	4					12	10	1
Traffic Signal Plan (Existing and Proposed)					6	4	20						32	2	16
Traffic Signal Details ("Traffic Signal Conduct Plan" in Original Contract)				6	4	4	8						22	1	22
Traffic Signal General Notes & Basis of Estimate ("Traffic Signal Controller Details" in Master Contract)								4					4	1	4
Traffic Signal Quantity Summary	1			4	6	8	8						27	2	14
Traffic Signal Standards													0	12	0
Cross Section Plans with Earthwork Tables (Develop Civil 3D Model)	3			5	10	40	15	12					85	22	4
Construction Cost Estimate (70%, 95% & Final)	2		2	4	10	12	10						40	N/A	N/A
Final Design QA/QC (70%, 95%, & Final)		40	4	8									52		
HOURS SUB-TOTALS	39	40	20	106	147	236	356	148	149	0	0		1241		
CONTRACT RATE PER HOUR (INCLUDE AVG HOURLY RATE TIME OVERHEAD AND FF)	\$75.00	\$80.00	\$100.00	\$72.00	\$64.00	\$56.00	\$38.00	\$54.00	\$50.00	\$42.00	\$28.00				
TOTAL LABOR COSTS	\$2,925.00	\$3,200.00	\$2,000.00	\$7,632.00	\$9,408.00	\$13,216.00	\$13,528.00	\$7,992.00	\$7,450.00	\$0.00	\$0.00		\$67,351.00		
SUBTOTAL - PHASE II													\$67,351.00		

TASK DESCRIPTION	PROJECT MANAGER	QUALITY MANAGER	PROJECT ADVISOR	SENIOR ENGINEER	PROJECT ENGINEER	DESIGN ENGINEER	ENGINEER IN TRAINING	SENIOR ENGINEERING TECH	SENIOR CADD OPERATOR	CADD OPERATOR	ADMIN/CLERICAL	TOTAL LABOR HRS. & COSTS	NO OF DWGS	LABOR HRS PER SHEET
PHASE II - ADDITIONAL SERVICES														
POTENTIAL WATER LINE RELOCATION												0	N/A	N/A
Coordination with MUD (Up to 3 Meetings)												0		
Waterline Relocation Plan & Profiles (1"=40' Scale)	1	4	1	4	8	16	12	24				70	15	5
Waterline Details	1	1		2		4		2				10	5	2
HOURS SUB-TOTALS	2	5	1	6	8	20	12	26	0	0		80		
CONTRACT RATE PER HOUR (INCLUDE AVG HOURLY RATE TIME OVERHEAD AND FF)	\$75.00	\$80.00	\$100.00	\$72.00	\$64.00	\$56.00	\$38.00	\$54.00	\$50.00	\$42.00	\$28.00			
TOTAL LABOR COSTS	\$150.00	\$400.00	\$100.00	\$432.00	\$512.00	\$1,120.00	\$456.00	\$1,404.00	\$0.00	\$0.00	\$0.00	\$4,574.00		
SUBTOTAL - PHASE III												\$4,574.00		

Prime Summary - AIG Technical Services, LLC.	
I. BASE SERVICES	
PHASE I - Preliminary Design Phase (PER)	\$89,582.00
PHASE II - Final Design Phase	\$67,351.00
II. OPTIONAL ADDITIONAL SERVICES	
PHASE II - Potential Water Line Relocation	\$4,574.00
TOTAL COSTS FOR PRIME ONLY (W/O ADDITIONAL SERVICES)	\$156,933.00
NON-SALARY (OTHER DIRECT EXPENSES) FOR PRIME ONLY	\$0.00
RATE MULTIPLIER + PROFIT	2.00
GRAND TOTAL (W/O ADDITIONAL SERVICES)	\$408,025.80

Survey - Weisser Engineering Company	
I. BASE SCOPE OF SERVICES	
1. Survey Control (Lump Sum)	\$0.00
2. Existing Right of Way Mapping (Cat. 1B, Cond. 3)	\$0.00
3. Topographic Surveying (Cat. 6, Cond. 1) (Lump Sum)	\$0.00
II. OPTIONAL ADDITIONAL SERVICES	
1. Parcel Surveys (18 parcels @ \$2,500.00)	\$45,000.00
Total	\$45,000.00

Geotechnical Services - Associated Testing Laboratories	
I. BASE SCOPE OF SERVICES	
Subsurface Exploration, Laboratory Testing, Geotechnical Consulting and Reporting. *	\$0.00
II. OPTIONAL ADDITIONAL SERVICES (DETENTION POND)	
Site Clearing	\$0.00
Subsurface Exploration, Laboratory Testing, Geotechnical Consulting and Reporting. *	\$0.00
Total	\$0.00

* This estimate assumes that:
 (i) underground utilities at proposed boring locations will be cleared by Texas 811 Call Service and/or private property maintenance personnel;
 (ii) the boring sites will be accessible to our truck-mounted drill rig equipment;
 (iii) permission/permit to access the site if needed, will be arranged by others at no cost to ATL.

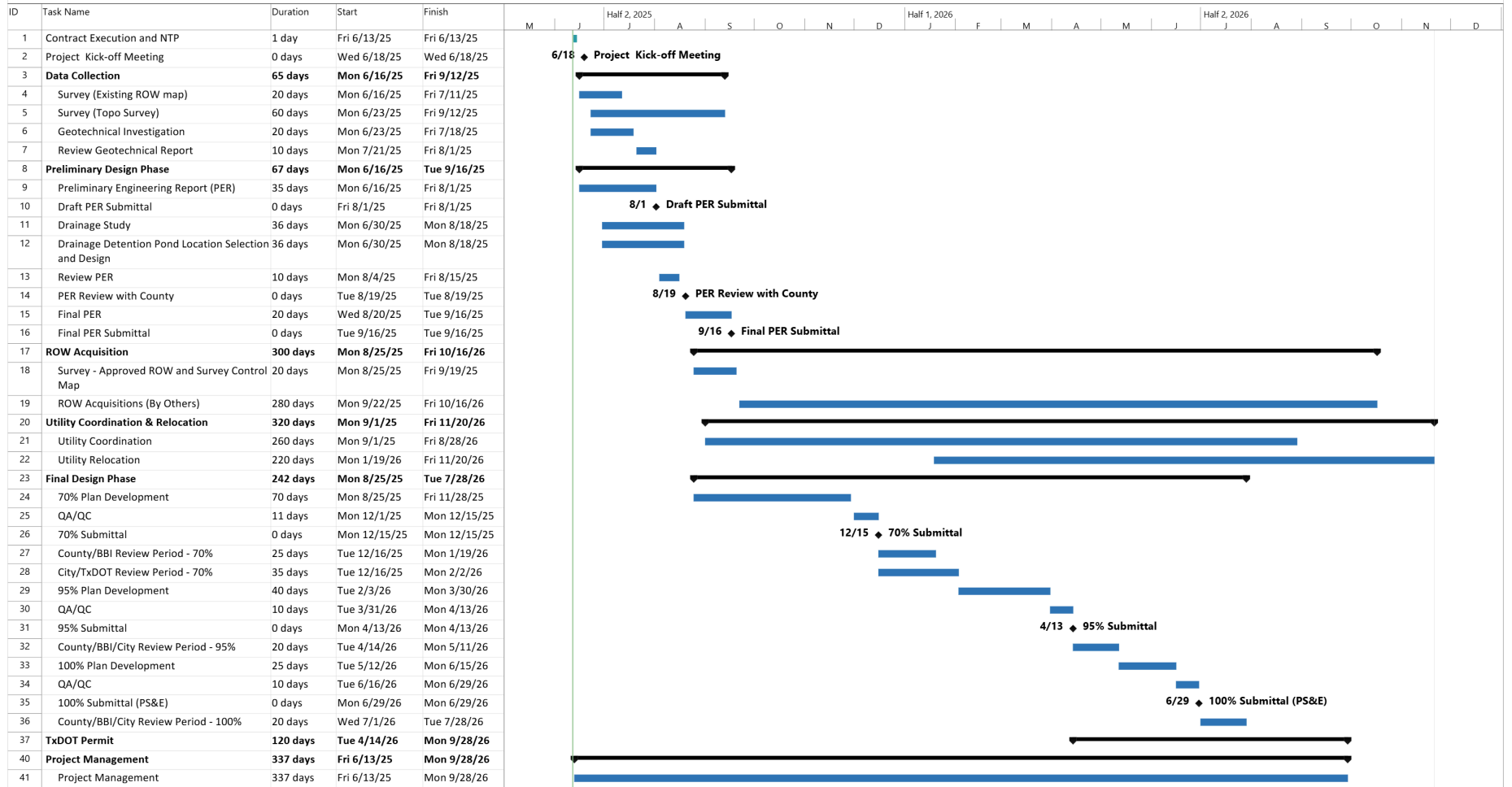
Subtotal - Professional Services Budget	\$408,025.80
Proposed ROW Mapping and Parcel Acquisition	\$45,000.00
Additional Services - Water Line Relocation	\$11,892.40
Additional Services - Detention Pond Geotechnical Investigations	\$0.00
Grand Total (Including Additional Services)	\$464,918.20



ATTACHMENT B

Project Anticipated Design Schedule

Attachment B
Anticipated Design Schedule (Supplement No. 1)
23114 - Rogers Road Segment 2



Project: 23114 - Rogers Road Seg. 2
Date: Thu 6/12/25

Task	Summary	Inactive Milestone	Duration-only	Start-only	External Milestone	Manual Progress
Split	Project Summary	Inactive Summary	Manual Summary Rollup	Finish-only	Deadline	
Milestone	Inactive Task	Manual Task	Manual Summary	External Tasks	Progress	



ATTACHMENT C

Weisser Engineering Company's Surveying Services Proposal

CHANGE ORDER REQUEST

Additional Service Compensation Request By:

WES Representative Name	Ramsey sass
WES Representative Title	C.O.O.
Date of Request	04-28-25
WES Job No.	EK551
Job Location	Rogers Road, Fulshear, TX

Client Information

Client Name.	AIG Tech
Client Address	1500 S. Dairy Ashford Suite 445
	Houston, TX 77077
Client Representative Name	Abraham Rebollar
Client PO/Reference Job No.	EK551

Additional Services Requested/Performed	Additional Parcel creation (approximately 18)
---	---

Deliverables Included	Metes and Bounds description and parcel plats for property acquisition
Estimated Completion Date	TBD. Approx. 1 per day after NTP.


Compensation for Additional Services Including Applicable State Sales Tax: \$45,000.00

TERMS AND CONDITIONS

This Change Order is entered into (1) pursuant to the terms of the Agreement and the Terms and Conditions herein, or (2) if an Agreement is not currently in effect, then in accordance with the Terms and Conditions herein, by and between Weisser Engineering Company, Inc. DBA Weisser Engineering & Surveying, a Texas corporation ("WES") and the Client named above. WES agrees to perform the Additional Services for Client pursuant to the terms, conditions and provisions of the Agreement, if applicable, and this Change Order. The cost estimate is based on portal to portal from our office located at 19500 Park Row, Houston to the job site. Client promises to pay each of WES's invoices within thirty (30) days of receipt of invoice.

By signing below, Client affirms that the individual signing below has the requisite authority to authorize the commitment described herein, agrees to be legally bound by the terms herein, and that this Change Order is by reference hereby made part of the Agreement, if applicable. **WES'S LIABILITY TO CLIENT FOR CLAIMS OF ANY KIND, WHETHER BASED ON CONTRACT OR TORT OR OTHERWISE RELATING TO THIS CHANGE ORDER, SHALL NOT EXCEED THE COMPENSATION PAID OR OWED TO WES FOR SERVICES UNDER THIS CHANGE ORDER.** In no event shall WES be liable to Client for any unrealized costs, anticipated profits, or any other consequential damages.

This Change Order Is Agreed To & Accepted By:

Authorizing Contractor	Weisser Engineering & Surveying
Company Name:	
Signature:	Printed Name: Taylor R. Sass
Printed Name:	Title: President & CEO
Title:	
Contact Email:	
Phone Number:	

CERTIFICATE OF INTERESTED PARTIES

FORM 1295

1 of 1

Complete Nos. 1 - 4 and 6 if there are interested parties.
Complete Nos. 1, 2, 3, 5, and 6 if there are no interested parties.

**OFFICE USE ONLY
CERTIFICATION OF FILING**

Certificate Number:
2025-1357965

Date Filed:
09/03/2025

Date Acknowledged:
09/23/2025

1 Name of business entity filing form, and the city, state and country of the business entity's place of business.
AIG Technical Services, LLC
Houston, TX United States

2 Name of governmental entity or state agency that is a party to the contract for which the form is being filed.
Fort Bend County

3 Provide the identification number used by the governmental entity or state agency to track or identify the contract, and provide a description of the services, goods, or other property to be provided under the contract.
23114
Engineering Consulting Services

4	Name of Interested Party	City, State, Country (place of business)	Nature of interest (check applicable)	
			Controlling	Intermediary

5 Check only if there is NO Interested Party.

6 UNSWORN DECLARATION

My name is _____, and my date of birth is _____.

My address is _____, _____, _____, _____, _____.
(city) (state) (zip code) (country)

I declare under penalty of perjury that the foregoing is true and correct.

Executed in _____ County, State of _____, on the _____ day of _____, 20____.
(month) (year)

Signature of authorized agent of contracting business entity
(Declarant)