



Fort Bend County Engineering
FORT BEND COUNTY, TEXAS

J. Stacy Slawinski, P.E.
County Engineer

July 25, 2025

Judge KP George
Fort Bend County Judge
401 Jackson Street
Richmond, Texas 77406-0148

Re: *Public Road Connection for Amendera Parkway at FM 359 on behalf of Fort Bend County MUD 210 – Sponsorship*

Honorable Judge George:

Fort Bend County Engineering Department has received and reviewed a request (letter attached) from BGE, Inc., on behalf of Fort Bend County MUD 210 for Fort Bend County to sponsor a project for a public road connection for Amendera Parkway at FM 359. The road connection will provide a point of access for the Amendera Subdivision.

Any and all costs involved with the project will be borne by TPHTM 359, LLC. There will be no cost to Fort Bend County.

The Texas Department of Transportation requests that an agency, such as Fort Bend County, act as a sponsor for the project. This means that the permit for the work will be issued in the name of Fort Bend County, and the County accepts responsibility for the terms and conditions of the permit.

We recommend acceptance of the sponsorship and request that this item be placed on the 08/12/2025 Commissioners Court agenda. We have prepared a letter to Texas Department of Transportation for the County Judges' signature.

If there are any questions, please do not hesitate to call.

Sincerely,



Hugo Sanchez
Development Services Manager

Attachment: Scope of Work

cc: Commissioner Vincent M. Morales, Jr., Pct. 1
File

301 Jackson St., Suite 401, Richmond, TX 77469
Phone 281-633-7500



COUNTY JUDGE

Fort Bend County, Texas

The Honorable KP George
County Judge

August 12, 2025

Glenn Allbritton,
P.E. Houston District Engineer
Texas Department of Transportation
7600 Washington Avenue
Houston, Texas 77007-1044
glenn.allbritton@txdot.gov

Re: Public Road Connection for Amendera Parkway at FM 359 on behalf of Fort Bend County MUD 210 – Sponsorship

Dear Glenn Allbritton:

Fort Bend County has received and reviewed a request (letter attached) from BGE, Inc. for Fort Bend County to sponsor a connection to a Texas Department of Transportation roadway on behalf of Fort Bend County MUD 210 for a public road connection for Amendera Parkway at FM 359 at no cost to the County.

The request was approved by Fort Bend County Commissioners Court at their meeting dated 08/12/2024. We request that a permit for the public road connection be issued with Fort Bend County as the sponsor for this project.

If there are any questions or a need for additional information, please call Hugo Sanchez in our Engineering Department at 281-633-7515.

Sincerely,

A handwritten signature in black ink that reads "KP George".

KP George
Fort Bend County Judge

KPG/

Attachments: Resolution
Drawing

cc: Drew Tiffany, BGE Inc.
Denise Laskowski, TxDOT
File

dtiffany@bgeinc.com
denese.laskowski@txdot.gov

THE STATE OF TEXAS §

COUNTY OF FORT BEND §

**RESOLUTION TO SPONSOR A PROJECT FOR A PUBLIC ROAD CONNECTION
FOR AMENDERA PARKWAY AT FM 359 ON BEHALF OF
FORT BEND COUNTY MUD 210**

On this 12 day of August, 2025, the Commissioners Court, sitting as the governing body of Fort Bend County, Texas, at a regular meeting, upon motion of Commissioner Meyers, seconded by Commissioner McCoy, duly put and carried;

WHEREAS, the proposed sponsorship project includes the installation of a public road connection at FM 359 for Amendera Parkway.

WHEREAS, the funding for such sponsorship of the project is to be provided through sources other than Fort Bend County.

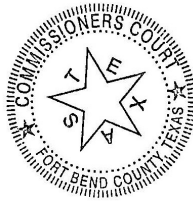
NOW, THEREFORE, BE IT RESOLVED that Fort Bend County expresses its support and sponsorship of such project with the Texas Department of Transportation to cause such improvements to be made at FM 359 for Amendera Parkway.

FORT BEND COUNTY

By: KP George
KP George, County Judge

ATTEST:

Laura Richard
Laura Richard, County Clerk





July 25, 2025

Fort Bend County Engineering
301 Jackson Street, Suite 401
Richmond, TX 77469

RE: FM 359 Street Tie-in at Proposed Amandera Parkway
Request for Sponsorship Letter

To Whom It May Concern,

BGE, Inc. formally requests on behalf of FBCMUD 210 (pre-funded by TPHTM 359, LLC) a Sponsorship Letter from Fort Bend County regarding the street tie-in between TxDOT and Fort Bend County maintained roadways. The subject tie-in is proposed Amandera Parkway, located approximately 3,000 feet west of FM 723. Please find attached overall/site plan for reference. If any additional information is required, please do not hesitate to reach out.

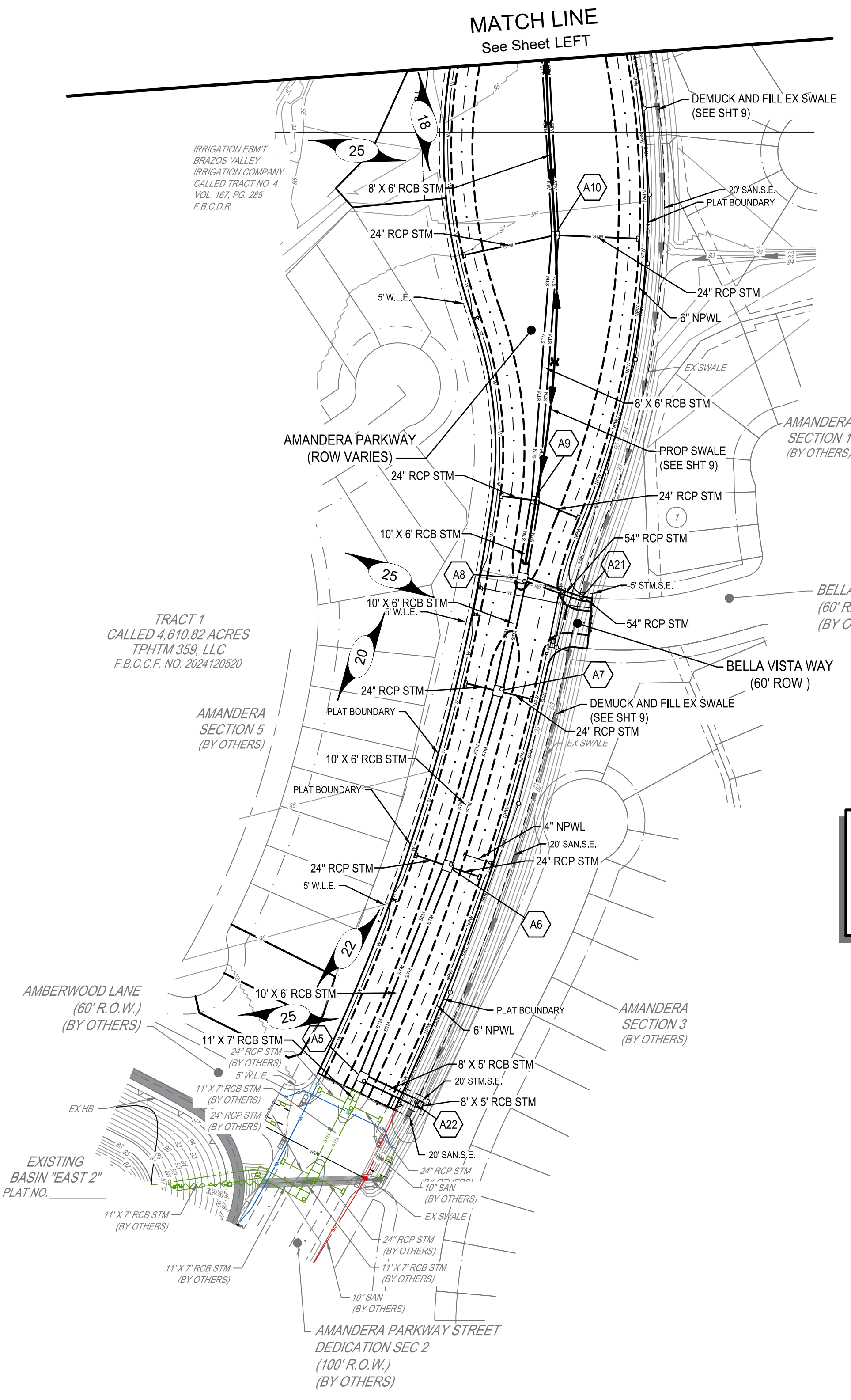
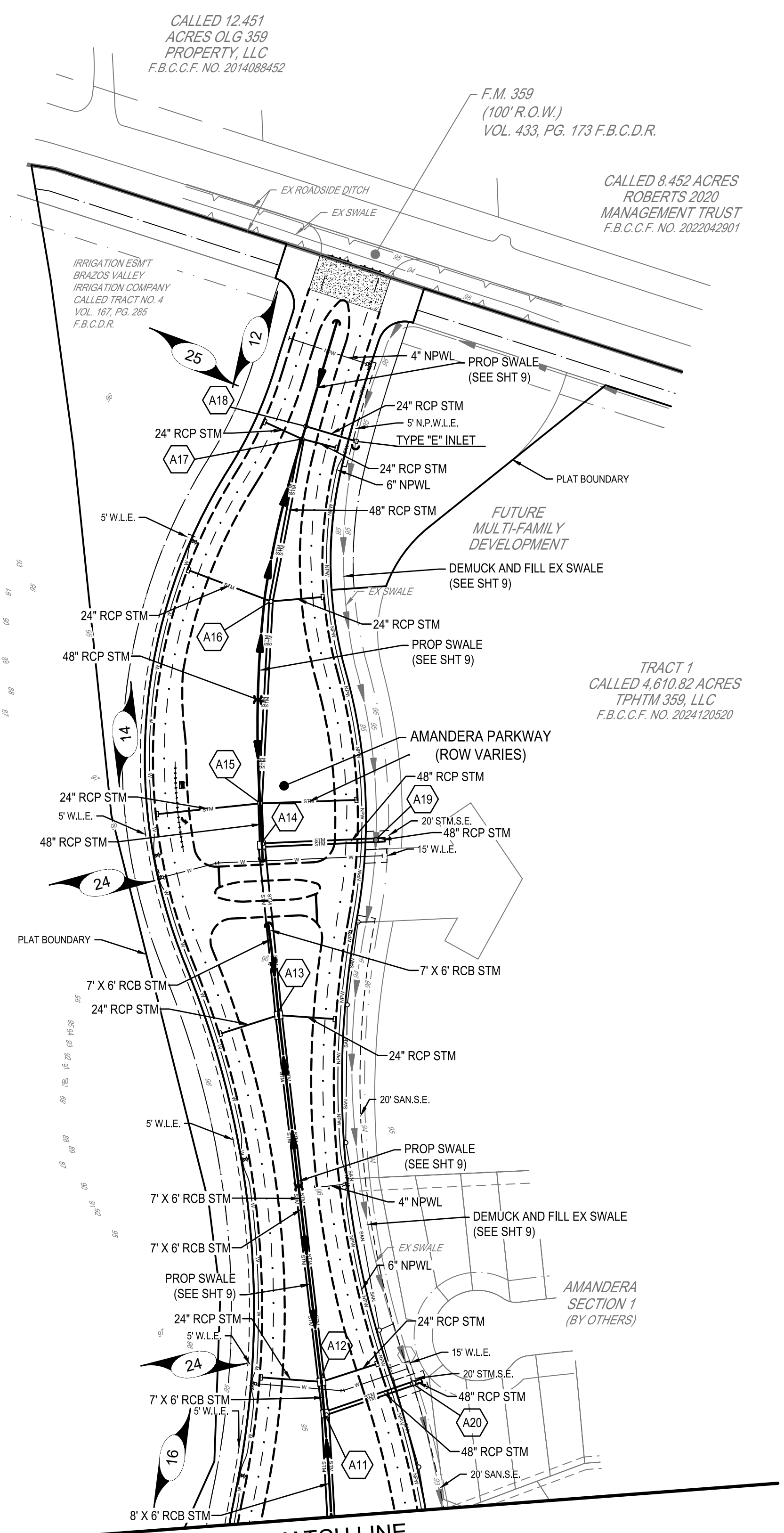
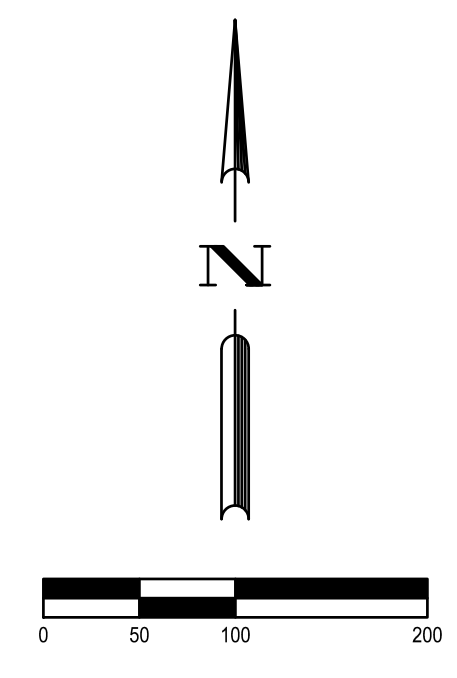
Sincerely,

A handwritten signature in blue ink, appearing to read "Drew Tiffany", is written over the typed name.

Drew Tiffany, P.E.
Sr. Project Manager
BGE, Inc.
dtiffany@bgeinc.com
832-913-4115

PRIMARY BENCHMARK:
 NGS MONUMENT K-806 RESET: BENCHMARK IS AN NGS BRASS DISK IN A CONCRETE MONUMENT STAMPED K 806 RESET 1963 LOCATED ON THE EAST SIDE OF FM 359 APPROXIMATELY 1,890 FEET SOUTH OF THE INTERSECTION OF FM 359 AND WINNER-FOSTER ROAD. BENCHMARK CHECKED TO RTN NETWORK VERTICAL ADJUSTMENT - JUNE, 2023. ELEVATION: 110.33 FEET NAVD-88 (GEOID18)

NGS MONUMENT N 1212: BENCHMARK IS AN NGS BRASS DISK IN A CONCRETE MONUMENT STAMPED N 1212 1973 LOCATED ON THE EAST SIDE OF FM 359 ON A CONCRETE HEADWALL AT THE NORTHEAST CORNER OF THE INTERSECTION OF FM 359 AND SETTGAST RANCH ROAD, POSSIBLY DISTURBED. PUBLISHED ELEVATION IS 105.59 FT -BGE MEASURED FROM K806 RESET - 105.90 FT. ELEVATION: 105.90 FEET (FROM K-806) NAVD-88 (GEOID18)



TRACT 1
 CALLED 4,610.82 ACRES
 TPHTM 359, LLC
 F.B.C.C.F. NO. 2024120520

TRACT 1
 CALLED 4,610.82 ACRES
 TPHTM 359, LLC
 F.B.C.C.F. NO. 2024120520

LEGEND

| | |
|--|---|
| | PROPOSED WATER LINE, GV & BOX WITH FIRE HYDRANT |
| | EXISTING WATER LINE, GV & BOX WITH FIRE HYDRANT |
| | PROPOSED SANITARY SEWER LINE, MANHOLE AND STACK |
| | EXISTING SANITARY SEWER LINE, MANHOLE AND STACK |
| | PROPOSED STORM SEWER LINE, MANHOLE AND INLETS |
| | EXISTING STORM SEWER LINE, MANHOLE AND INLETS |
| | PROPOSED NON-POTABLE WATER LINE |
| | STORM SEWER MANHOLE |
| | SHEET REFERENCE NUMBER |
| | EXISTING CONTOUR LINE |

NOTICE
 FOR LOCATION OF UNDERGROUND UTILITY LINES, CALL 811, 48 HOURS BEFORE EXCAVATING.

PERMIT NOTES:

- CONTRACTOR TO OBTAIN ALL PERMITS REQUIRED BY FORT BEND COUNTY, TEXAS PRIOR TO STARTING CONSTRUCTION OF UTILITIES AND/OR CULVERTS WITHIN COUNTY ROAD RIGHT-OF-WAY. THE PERMIT IS TO BE ISSUED IN THE OWNERS NAME.
- CONTRACTOR TO OBTAIN ALL PERMITS REQUIRED BY REGULATION OF FORT BEND COUNTY, TEXAS FOR FLOOD PLAIN MANAGEMENT PRIOR TO STARTING CONSTRUCTION.

GENERAL NOTES:

- "U.E." INDICATES "UTILITY EASEMENT".
- "W.L.E." INDICATES "WATER LINE EASEMENT".
- "SAN.S.E." INDICATES "SANITARY SEWER EASEMENT".
- "STM.S.E." INDICATES "STORM SEWER EASEMENT".
- "D.E." INDICATES "DRAINAGE EASEMENT".
- "TEMP.D.E." INDICATES "TEMPORARY DRAINAGE EASEMENT".
- ALL 14 FOOT UTILITY EASEMENTS SHOWN EXTEND 7 FEET ON EACH SIDE OF A COMMON LOT LINE UNLESS OTHERWISE INDICATED.
- ALL SANITARY SEWERS ARE 8" UNLESS OTHERWISE INDICATED.
- ALL WATER LINES ARE 8" UNLESS OTHERWISE INDICATED.
- ALL STORM SEWERS ARE 24" UNLESS OTHERWISE INDICATED.

| REV. NO. | DATE | DESCRIPTION | P.E. APPR. |
|----------|------|-------------|------------|
| 3 | | | |
| 2 | | | |
| 1 | | | |

BGE, Inc.
 10777 Westheimer, Suite 500
 Houston, TX 77042
 Tel: 281-258-8700 • www.bgeinc.com
 TBPE Registration No. F-1046

ANDREW M. TIFFANY
 LICENSED PROFESSIONAL ENGINEER
 123310
 06/04/2025
 BGE, INC. F-1046

FORT BEND COUNTY M.U.D. NO. 210

AMANDERA PARKWAY STREET DEDICATION SEC 1 AND RESERVES

STORM SEWER OVERALL

JOB NUMBER: 14402-00

| | |
|-------------------------|--------------------------|
| SUBMITTED BY: BGE, INC. | DESIGNED BY: KG |
| SCALE: 1"=100' | DRAWN BY: HM |
| DATE: JUNE 2025 | SHEET NO. 4 OF 47 SHEETS |
| SURVEY BY: BGE, INC. | CITY DWG NO: |
| F.B. NO: | |

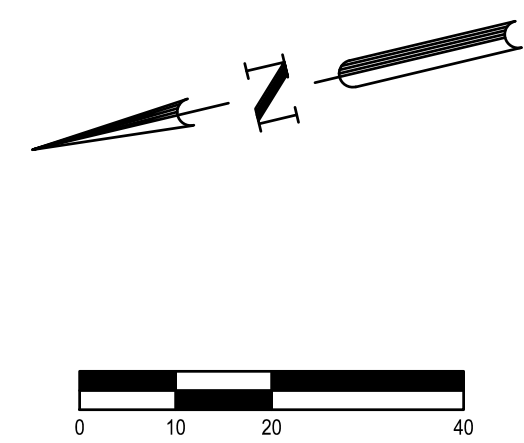
C:\0101442-00\LD-500\Drawings\Phase01_CADD\01_Sewer\STM.dwg

| CURVE TABLE | | | | | |
|-------------|-------------|----------|------------|-----------------|----------------|
| CURVE | DELTA ANGLE | RADIUS | ARC LENGTH | CHORD DIRECTION | CHORD DISTANCE |
| C1 | 24°52'19" | 1500.00' | 651.15' | S05°46'32"W | 646.05' |

| POINT TABLE | | |
|-------------|---------|-----------|
| NUMBER | STATION | OFFSET |
| 1 | 0+43.14 | 5.27' LT |
| 2 | 0+43.14 | 5.27' RT |
| 3 | 0+40.21 | 41.00' RT |
| 4 | 0+39.79 | 41.00' LT |
| 5 | 0+80.47 | 16.00' LT |
| 6 | 0+80.47 | 16.00' RT |
| 7 | 0+98.56 | 16.00' RT |
| 8 | 0+98.53 | 41.00' RT |

| POINT TABLE | | |
|-------------|---------|-----------|
| NUMBER | STATION | OFFSET |
| 9 | 0+98.55 | 16.00' LT |
| 10 | 0+98.56 | 41.00' LT |
| 11 | 1+33.87 | 16.00' RT |
| 12 | 1+33.87 | 41.00' RT |
| 13 | 2+18.44 | 16.00' LT |
| 14 | 2+18.44 | 41.00' LT |
| 15 | 2+51.90 | 62.57' RT |
| 16 | 2+60.24 | 39.10' RT |

- NOTES:
- SANITARY SEWERS SHALL BE PROPOSED SDR-26 PVC, UNLESS OTHERWISE INDICATED.
 - STORM SEWERS SHALL BE PROPOSED REINFORCED CONCRETE PIPE C-76, CLASS III, UNLESS OTHERWISE INDICATED. ALL JOINTS SHALL BE RUBBER GASKETED.
 - ALL WATER LINES TO BE PROPOSED PVC CLASS 235, DR-18, AWWA C-900 UNLESS OTHERWISE INDICATED.
 - PLACE 1 FULL SECTION (MIN 18") OF WL AND SS CENTERED AT SSWL CROSSING. PROVIDE RESTRAINED JOINTS AT BOTH ENDS OF THE FULL SECTIONS. WHEN WL GOES UNDER SS PROVIDE DIP FOR SMALL DIAMETER WL (LESS THAN 24 INCHES). PVC PIPE IS ONLY ALLOWED IF ENCASED AS PER TAC 290.44, AND USE RESTRAINED JOINTS FOR BOTH DIP / PVC PIPE AND PLACE 1 FULL SECTION (MIN 15") OF MIN 150 PSI SS CENTERED AT WL CROSSING. PROVIDE RESTRAINED JOINTS AT BOTH ENDS OF THE FULL SECTIONS.
 - ALL CURB RETURNS ARE NO GREATER THAN 2% UNLESS OTHERWISE NOTED.
 - ALL TO ELEVATIONS IN PROFILE ARE BASED ON 6" CURB, 4"X12" TC ELEVATIONS SHALL BE CONSTRUCTED 0.17' LOWER THAN INDICATED IN PROFILE.
 - CROSS SLOPE THROUGH CROSSWALK SHALL NOT EXCEED 2% IN ACCORDANCE WITH ADA.

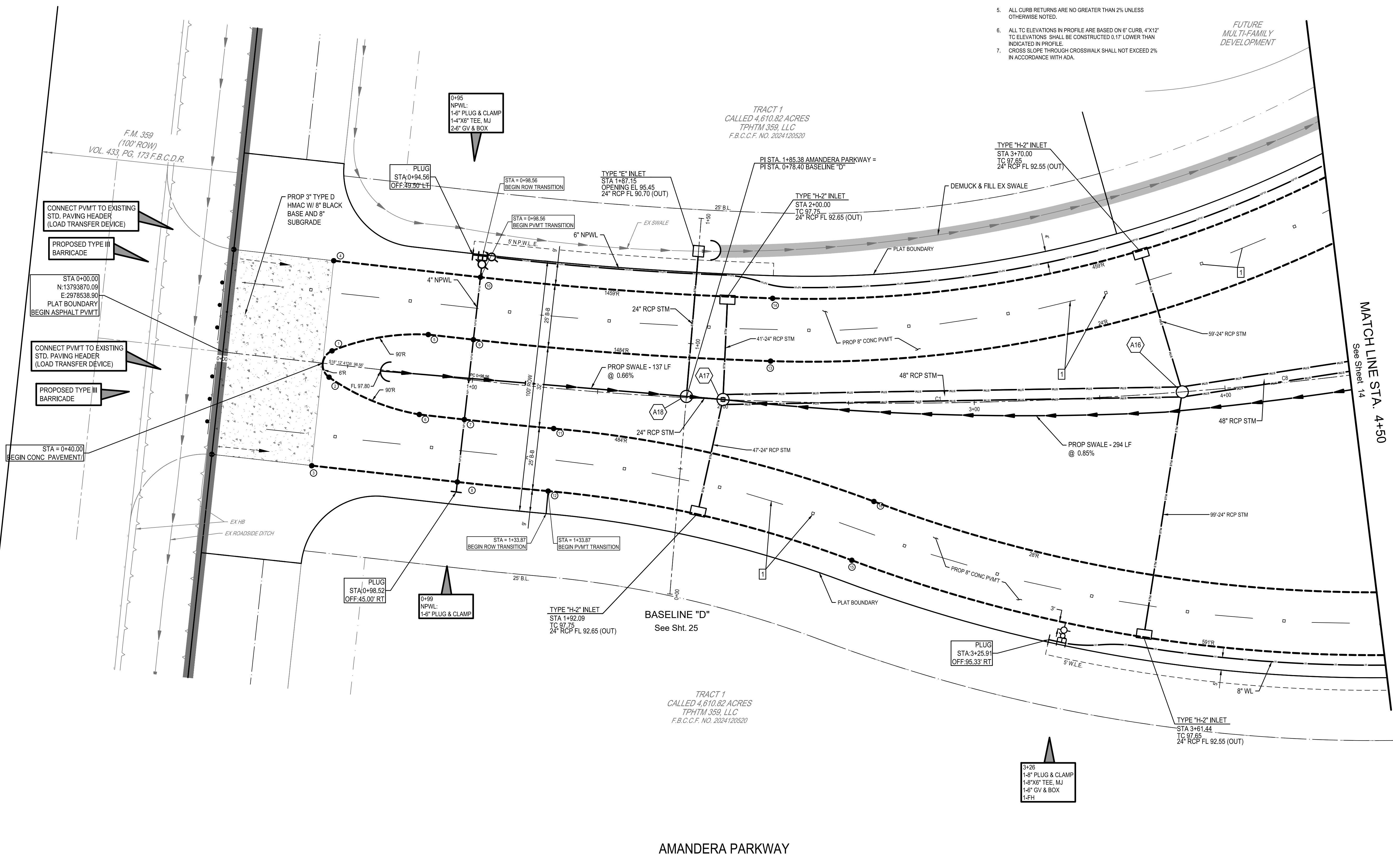


PRIMARY BENCHMARK:
 NGS MONUMENT K-806 RESET: BENCHMARK IS AN NGS BRASS DISK IN A CONCRETE MONUMENT STAMPED K 806 RESET 1963 LOCATED ON THE EAST SIDE OF FM 359 APPROXIMATELY 1,880 FEET SOUTH OF THE INTERSECTION OF FM 359 AND WINNER-FOSTER ROAD. BENCHMARK CHECKED TO RTN NETWORK VERTICAL ADJUSTMENT - JUNE, 2023. ELEVATION: 110.33 FEET NAVD-88 (GEOID18)

NGS MONUMENT N 1212: BENCHMARK IS AN NGS BRASS DISK IN A CONCRETE MONUMENT STAMPED N 1212 1973 LOCATED ON THE EAST SIDE OF FM 359 ON A CONCRETE HEADWALL AT THE NORTHEAST CORNER OF THE INTERSECTION OF FM 359 AND SETTEGAST RANCH ROAD, POSSIBLY DISTURBED. PUBLISHED ELEVATION IS 105.59 FT -BGE MEASURED FROM K806 RESET - 105.90 FT. ELEVATION: 105.90 FEET (FROM K-806) NAVD-88 (GEOID18)

LEGEND

- SANITARY MANHOLE NUMBER
- STORM MANHOLE NUMBER
-
-
-



TO ARRANGE FOR LINES TO BE TURNED OFF OR MOVED, CALL CENTERPOINT ENERGY AT 713-207-2222.

NOTICE:
 For your safety, you are required by Texas Law to call 811 at least 48 hours before you dig so that underground lines can be marked. This verification does not fulfill your obligation to call 811.

VERIFICATION OF PRIVATE UTILITY LINES

Date: _____
 CenterPoint Energy/Natural Gas Facilities Verification ONLY.
 (This Signature verifies that you have shown ONP Natural Gas lines correctly - not to be used for conflict verification.) (Gas service lines are not shown.)
 Signature Valid for six months.

Date: _____
 CenterPoint Energy/UNDERGROUND Electric Facilities Verification ONLY.
 (This signature verifies existing underground facilities - not to be used for conflict verification.)
 Signature Valid for six months.

Date: _____
 Approval for AT&T TEXAS/SWBT underground conduit facilities only.
 Signature Valid for One Year.

| REV. NO. | DATE | DESCRIPTION | P.E. APPR. |
|----------|------|-------------|------------|
| 3 | | | |
| 2 | | | |
| 1 | | | |

BGE, Inc.
 10777 Westheimer, Suite 500
 Houston, TX 77042
 Tel: 281-258-8700 • www.bgeinc.com
 TBPE Registration No. F-1046

FORT BEND COUNTY M.U.D. NO. 210

**AMANDERA PARKWAY
 STREET DEDICATION SEC 1
 AND RESERVES**

**PLAN - AMANDERA PARKWAY
 (STA. 0+00 TO 4+50)**

JOB NUMBER: 14402-00

SUBMITTED: BGE, INC. DESIGNED BY: KG
 SCALE: HORIZ 1"=20' DRAWN BY: HM
 DATE: JUNE 2025 SHEET NO. 12 OF 47 SHEETS
 SURVEY BY: BGE, INC. CITY DWG NO:
 F.B. NO:

AMANDERA PARKWAY

C:\00014402-00\LD-Stage_Plan\01_CADD\01_Survey\PL_01.dwg