



**PERMIT APPLICATION REVIEW FORM FOR
CABLE, CONDUIT, AND POLE LINE ACTIVITY
IN FORT BEND COUNTY**

20T
Fort Bend County
Engineering Department
301 Jackson Suite 401
Richmond, Texas 77469
281.633.7500
Permits@fortbendcountytx.gov

☐

Right of Way Permit

☒

Commercial Driveway Permit

Permit No: 2022-57760

Applicant: R Construction Civil, LLC dba R Construction Company

Job Location Site: 0 Koeblen Road, Rosenberg, TX 77469

Bond No. **Date of Bond:** 10/14/2021 **Amount:** \$50,000.00

The above applicant came to make use of certain Fort Bend County property subject to, "The Order Regulating the Laying, Construction, Maintenance, and Repair of Buried Cables, Conduits, and Pole Lines, In, Under, Across or Along Roads, Streets, Highways, and Drainage Ditches in Fort Bend County, Texas, Under the Jurisdiction of the Commissioners Court of Fort Bend County, Texas," as passed by the Commissioners Court of Fort Bend County, Texas, of the Minutes of the Commissioners Court of Fort Bend County, Texas, to the extent that such order is not inconsistent with Chapter 181, Vernon's Texas Statutes and Codes Annotated.

Notes:

1. Evidence of review by the Commissioners Court must be kept on the job site and failure to do so constitutes grounds for job shutdown.
2. Written notices are required, via email, for certain construction activities in County right-of-way. Contact permits@fbctx.gov for a copy of the notification procedure applicable to your project.
3. This permit expires one (1) year from date of permit if construction has not commenced.
4. This permit applies to work performed within right-of-ways owned and maintained by Fort Bend County only, and it is the responsibility of the applicant to acquire all other necessary permits and permissions.

On this 24th day of January, 2023, Upon Motion of Commissioner Meyers, seconded by Commissioner Morales, duly put and carried, it is ORDERED, ADJUDGED AND DECREED that said notice of said above purpose is hereby acknowledged by the Commissioners Court of Fort Bend County, Texas, and that said notice be placed on record according to the regulation order thereof.

Signature

By:

Sean Eglinton
County Engineer

Presented to Commissioners Court and approved.

Date Recorded 1-30-2023 Comm. Court No. 20T

Clerk of Commissioners Court

By:

N/A

Drainage District Engineer/Manager

By:

Arinda Willis
Deputy



REVIEW BY FORT BEND COUNTY
COMMISSIONERS COURT

Fort Bend County
Engineering Department
301 Jackson Suite 401
Richmond, Texas 77469
281.633.7500
Permits@fortbendcountytx.gov

☐

Right of Way Permit

☒

Commercial Driveway Permit

Permit No: 2022-57760

The following "Notice of Proposed Cable, Conduit, and/or Pole Line activity in Fort Bend County" and accompanying attachments have been reviewed and the notice conforms to appropriate regulations set by Commissioner's Court of Fort Bend County, Texas.

(1) COMPLETE APPLICATION FORM:

☒
☒
☒

- a. Name of road, street, and/or drainage ditch affected.
b. Vicinity map showing course of directions
c. Plans and specifications

(2) BOND:

☐

County Attorney, approval when applicable.

☒

Perpetual bond currently posted.

Bond No



Amount: \$50,000.00

☐

Performance bond submitted.

Bond No:

Amount:

☐

Cashier's Check

Check No:

Amount:

(3) DRAINAGE DISTRICT APPROVAL (WHEN APPLICABLE):

Drainage District Approval

Date

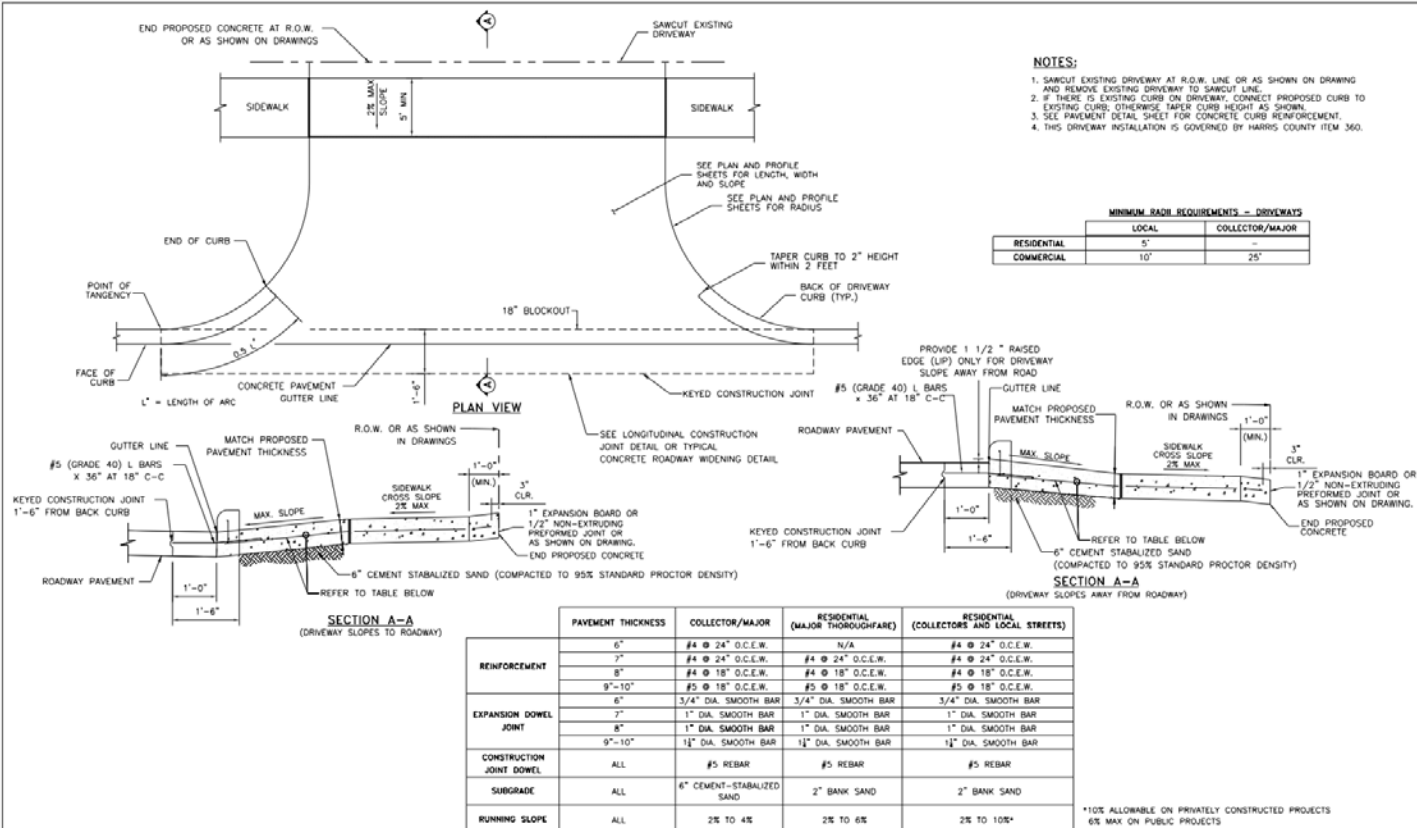
We have reviewed this project and agree it meets minimum requirements.

Permit Administrator

1/13/2023

Date

A:\174\A\1801\Fort Bend County Standards\Fort Bend County STD\CONCRETE DRIVEWAY DETAILS FOR MAJOR ROADWAY CONSTRUCTION.DWG



NO.	REVISIONS	DATE	NAME
1	ORIGINAL STANDARD ISSUED	2-1-21	RWB
2			
3			
4			

FORT BEND COUNTY
ENGINEERING DEPARTMENT

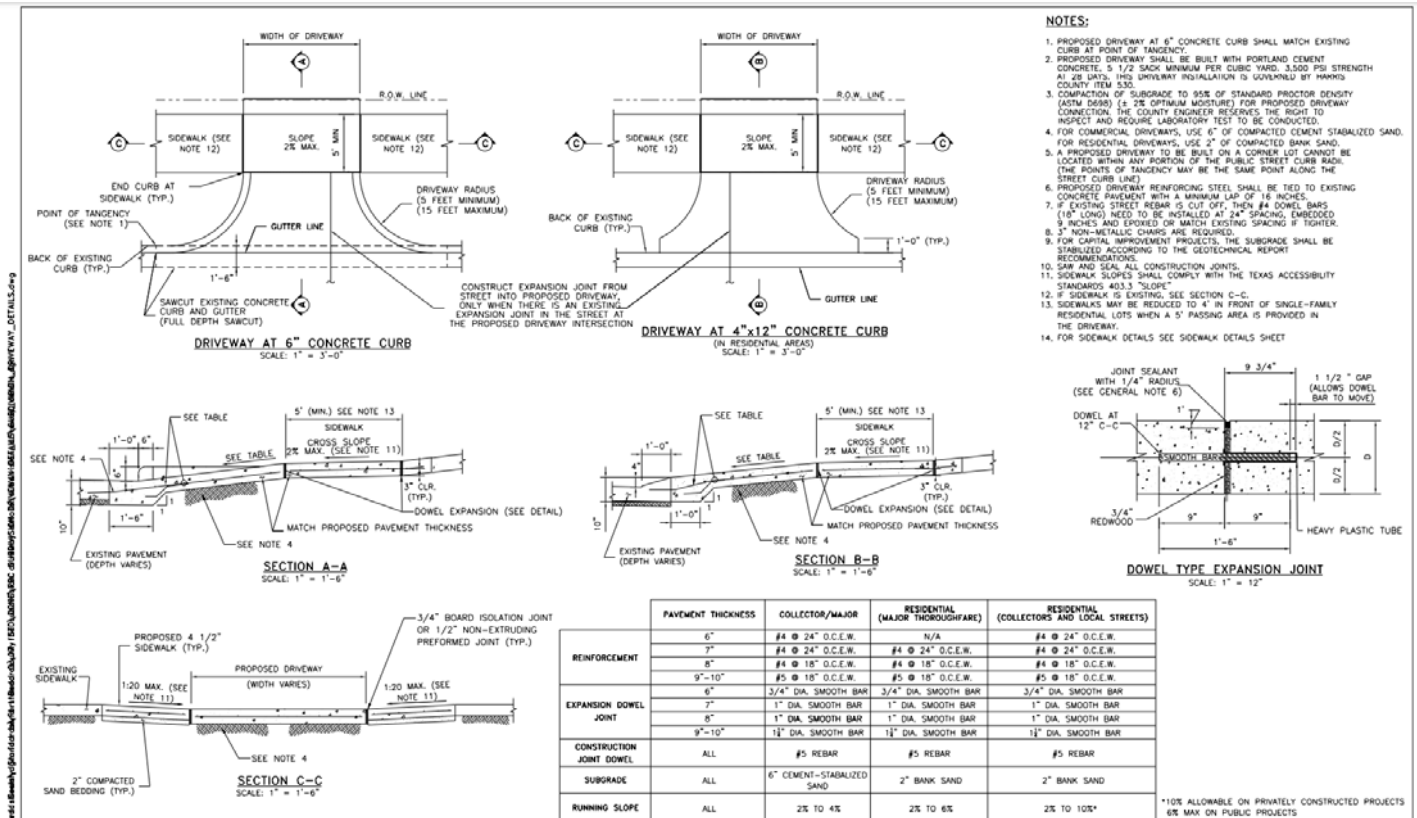


CONSULTANT LOGO
(LAYER "C-NON-PRINT")

FOR INTERIM REVIEW ONLY
DOCUMENT INCOMPLETE.
NOT FOR CONSTRUCTION.
REVISIONS: "C-NON-PRINT"
P.E. SERIAL NO.
DATE:

PROJECT TITLE:	DESIGN BY:	DATE:	PROJECT NO.:
DRIVEWAY DETAILS FOR MAJOR ROADWAY CONSTRUCTION	2-1-21		
APPROVED BY:			

DESIGNED BY:	DATE:	PROJECT NO.:
2-1-21		
APPROVED BY:		



NO.	REVISIONS	DATE	NAME
1	ORIGINAL STANDARD ISSUED	2-1-21	RWB
2			
3			
4			

FORT BEND COUNTY
ENGINEERING DEPARTMENT

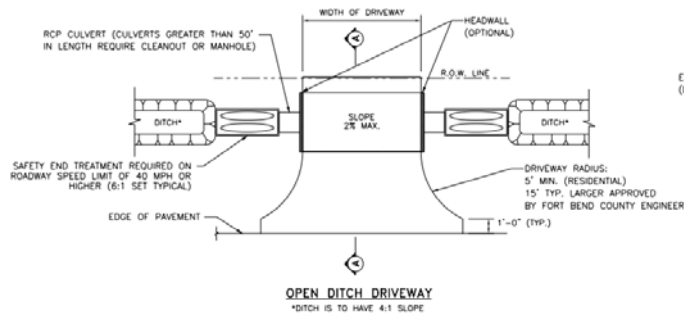


CONSULTANT LOGO
(LAYER "C-NON-PRINT")

FOR INTERIM REVIEW ONLY
DOCUMENT INCOMPLETE.
NOT FOR CONSTRUCTION.
REVISIONS: "C-NON-PRINT"
P.E. SERIAL NO.
DATE:

PROJECT TITLE:	DESIGN BY:	DATE:	PROJECT NO.:
DRIVEWAY DETAILS FOR RESIDENTIAL DRIVEWAYS	2-1-21		
APPROVED BY:			

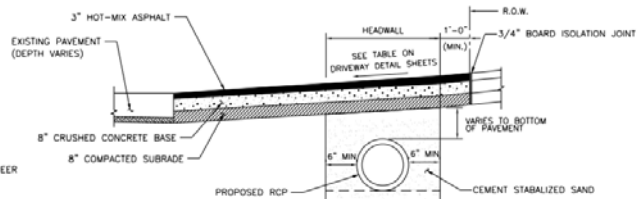
DESIGNED BY:	DATE:	PROJECT NO.:
2-1-21		
APPROVED BY:		



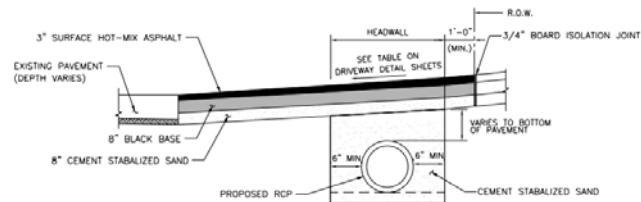
	MINIMUM RADIUS REQUIREMENTS - DRIVEWAYS	
	LOCAL	COLLECTOR/MAJOR
RESIDENTIAL	5'	-
COMMERCIAL	10'	25'



ASPHALT APRON DETAIL - DRIVEWAY PROFILE FOR CULVERT DRAINAGE



SECTION A-A FOR RESIDENTIAL DRIVEWAYS



SECTION A-A FOR COMMERCIAL DRIVEWAYS

NO.	REVISIONS	DATE	NAME
1	ORIGINAL STANDARD ISSUED	2-1-21	RWB

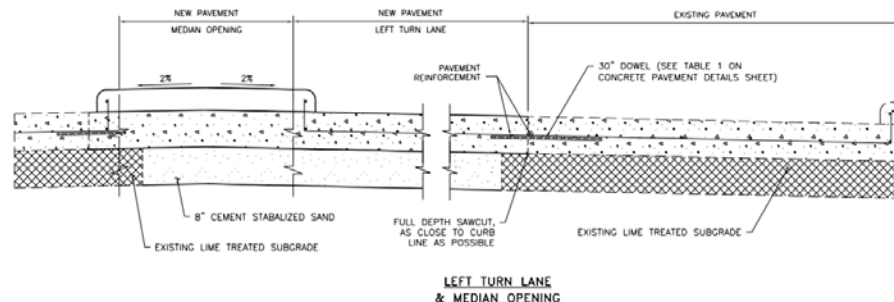
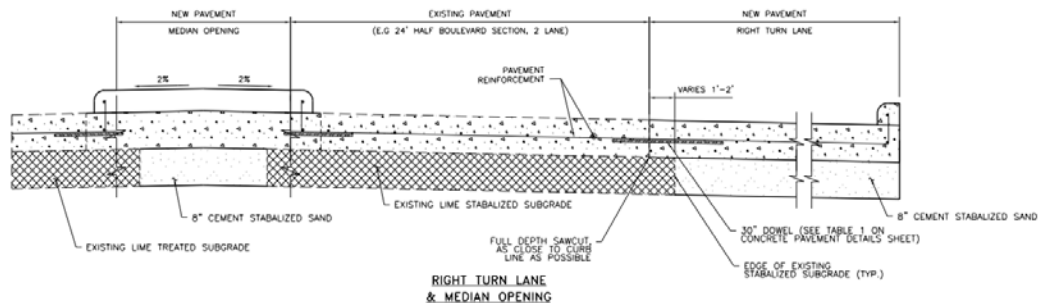
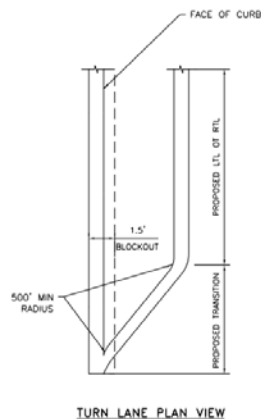
**FORT BEND COUNTY
ENGINEERING DEPARTMENT**



CONSULTANT LOGO
(LAYER "C-NON-PRINT")

FOR INTERIM REVIEW ONLY
DOCUMENT INCOMPLETE:
NOT ADVISED FOR CONSTRUCTION
BIDDING/ISSUING PURPOSES
(LAYER "C-NON-PRINT")
P.E. SERIAL NO.
DATE:

PROJECT TITLE:		PROJECT STANDARD
DRAWN BY:	NOT	PROJECT STANDARD
CHECK BY:	NOT	PROJECT STANDARD
SCALE:	AS NOTED	PROJECT STANDARD
DATE:	2-1-21	PROJECT STANDARD
APPROVED BY:		PROJECT STANDARD



- NOTES**
- FOR CONCRETE PAVEMENT REINFORCEMENT AND JOINT DETAILS, SEE CONCRETE PAVEMENT DETAILS SHEET

NO.	REVISIONS	DATE	NAME
1	ORIGINAL STANDARD ISSUED	2-1-21	RWB

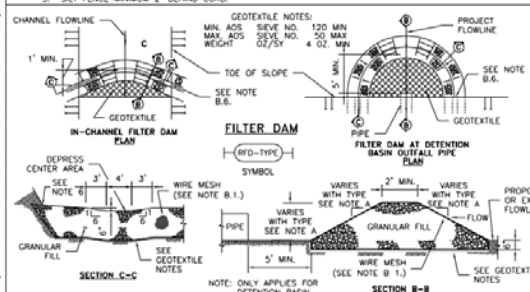
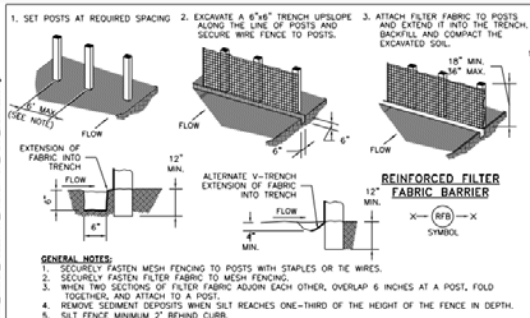
**FORT BEND COUNTY
ENGINEERING DEPARTMENT**



CONSULTANT LOGO
(LAYER "C-NON-PRINT")

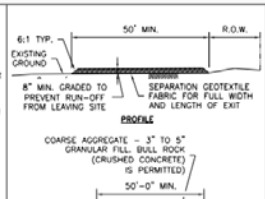
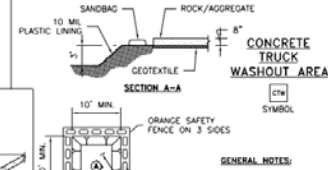
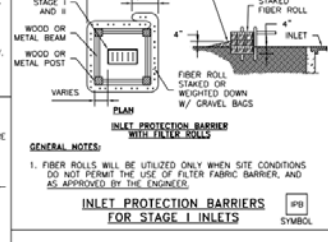
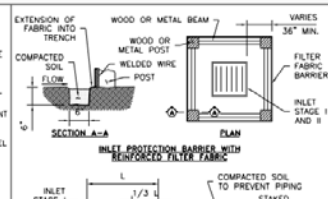
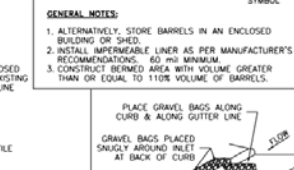
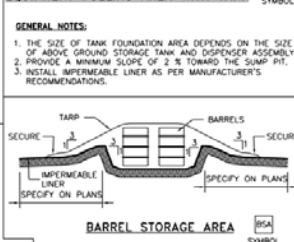
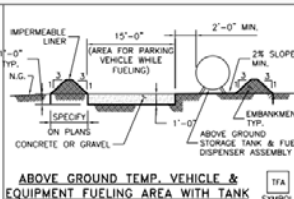
FOR INTERIM REVIEW ONLY
DOCUMENT INCOMPLETE:
NOT ADVISED FOR CONSTRUCTION
BIDDING/ISSUING PURPOSES
(LAYER "C-NON-PRINT")
P.E. SERIAL NO.
DATE:

PROJECT TITLE:		PROJECT STANDARD
DRAWN BY:	NOT	PROJECT STANDARD
CHECK BY:	NOT	PROJECT STANDARD
SCALE:	AS NOTED	PROJECT STANDARD
DATE:	2-1-21	PROJECT STANDARD
APPROVED BY:		PROJECT STANDARD



- A. TYPES OF FILTER DAMS**
1. TYPE 1 (NON-REINFORCED)
 - a. HEIGHT - 18-24 INCHES. MEASURE VERTICALLY FROM EXISTING GROUND TO TOP OF FILTER DAM.
 - b. TOP WIDTH - 2 FEET (MINIMUM).
 - c. SLOPES - 2:1 (MAXIMUM).
 2. TYPE 2 (REINFORCED)
 - a. HEIGHT - 18-36 INCHES. MEASURE VERTICALLY FROM EXISTING GROUND TO TOP OF FILTER DAM.
 - b. TOP WIDTH - 2 FEET (MINIMUM).
 - c. SLOPES - 2:1 (MAXIMUM).
 3. TYPE 3 (REINFORCED)
 - a. HEIGHT - 36-48 INCHES. MEASURE VERTICALLY FROM EXISTING GROUND TO TOP OF FILTER DAM.
 - b. TOP WIDTH - 2 FEET (MINIMUM).
 - c. SLOPES - 3:1 (MAXIMUM).
 4. TYPE 4 (GABION)
 - a. HEIGHT - 30 INCHES (MINIMUM). MEASURE VERTICALLY FROM EXISTING GROUND TO TOP OF FILTER DAM.
 - b. TOP WIDTH - 2 FEET (MINIMUM).
 5. TYPE 5. AS SHOWN ON THE PLANS.

- B. CONSTRUCT FILTER DAMS ACCORDING TO THE FOLLOWING CRITERIA UNLESS SHOWN OTHERWISE ON THE PLANS.**
1. TYPE 2 AND 3 FILTER DAMS: SECURE WITH 20 GAUGE GALVANIZED WOVEN WIRE MESH WITH 1 INCH DIAMETER HEXAGONAL OPENINGS.
 2. PLACE GRANULAR FILL ON THE WIRE MESH TO HEIGHT AND SLOPES SHOWN ON PLANS OR AS SPECIFIED BY THE ENGINEER.
 3. 3-5 INCHES FOR ROCK FILTER DAM TYPES 1, 2, AND 4.
 4. 4-8 INCHES FOR ROCK FILTER DAM TYPE REFER TO GRANULAR FILL IN SPECIFICATION SECTION NO. 02378 RIPRAP AND GRANULAR FILL.
 5. FOLD WIRE MESH AT UPSTREAM SIDE OVER GRANULAR FILL AND TIGHTLY SECURE TO ITSELF ON THE DOWNSTREAM SIDE USING WIRE TIES OR HOOD RINGS.
 6. IN STREAM: SECURE OR STAKE MESH TO STREAM BED PRIOR TO AGGREGATE PLACEMENT.
 7. SEE HCYCD SPECIFICATION SECTION NO. 02364-FILTER DAMS.
 8. EMBED ONE FOOT MINIMUM INTO SLOPE AND BASE ONE FOOT HIGHER THAN CENTER OF DEPRESSED AREA AT SLOPE.



FORT BEND COUNTY
ENGINEERING DEPARTMENT



CONSULTANT LOGO
(LAYER "C-NON-PRINT")

FOR INTERIM REVIEW ONLY
DOCUMENT NO. 1001-1001-1001
(LAYER "C-NON-PRINT")
P.E. SERIAL NO. 1001-1001-1001
DATE 2-1-21

PROJECT TITLE:	STORM WATER POLLUTION PREVENTION PLAN DETAILS
DRAWN BY:	INT
CHECKED BY:	INT
SCALE:	NONE
DATE:	2-1-21
APPROVED BY:	INT
FIGURED STANDARD:	
SHEET NO.:	1 / 1