

THE STATE OF TEXAS                   §  
   §  
 COUNTY OF FORT BEND               §

## ORDER OF INCLUSION

### RECITALS

WHEREAS, on this day, Fort Bend County Assistance District No. 10 (the "District") received and considered the Petition and Consent by Landowners to the Inclusion of Real Estate to the District, signed and brought forward by Fort Bend County, (the "Petitioner"); and

WHEREAS, the District finds that the Petitioner is the owner of all or a majority of land in the area to be included in the District, being a certain segment of roadway situated in Fort Bend County, Texas (the "Annexation Area"), described in the attached Exhibit A; and

WHEREAS, the District also finds that there are no registered voters in the Annexation Area and therefore, no election is required; and

WHEREAS, Section 387.003(f) of the Texas Local Government Code permits the District by order, to include an area in the District on receipt of a petition or petitions signed by the owner or owners of a majority of the land in the area to be included in the District; and

NOW THEREFORE, BE IT ORDERED BY THE BOARD OF DIRECTORS OF THE DISTRICT THAT:

Section 1: The Annexation Area is hereby included within the boundaries of the District by annexation, eligible for the functions permitted to be performed by the District, including but not limited to the construction, maintenance, or improvement of roads or highways.

Section 2: This Order is effective immediately upon passage.

ADOPTED this 6th day of September, 2022.

**FORT BEND COUNTY ASSISTANCE  
DISTRICT NO. 10**

By: KP George  
County Judge KP George  
KP George, County Judge

Date: September 6, 2022

ATTEST:

By: Laura Richard  
Laura Richard, County Clerk



# EXHIBIT A

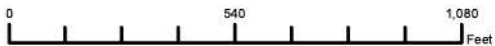
# County Assistance District #10

## Legend

- Annexation Area
- De-Annexation Area
- CAD #10
- County Limits

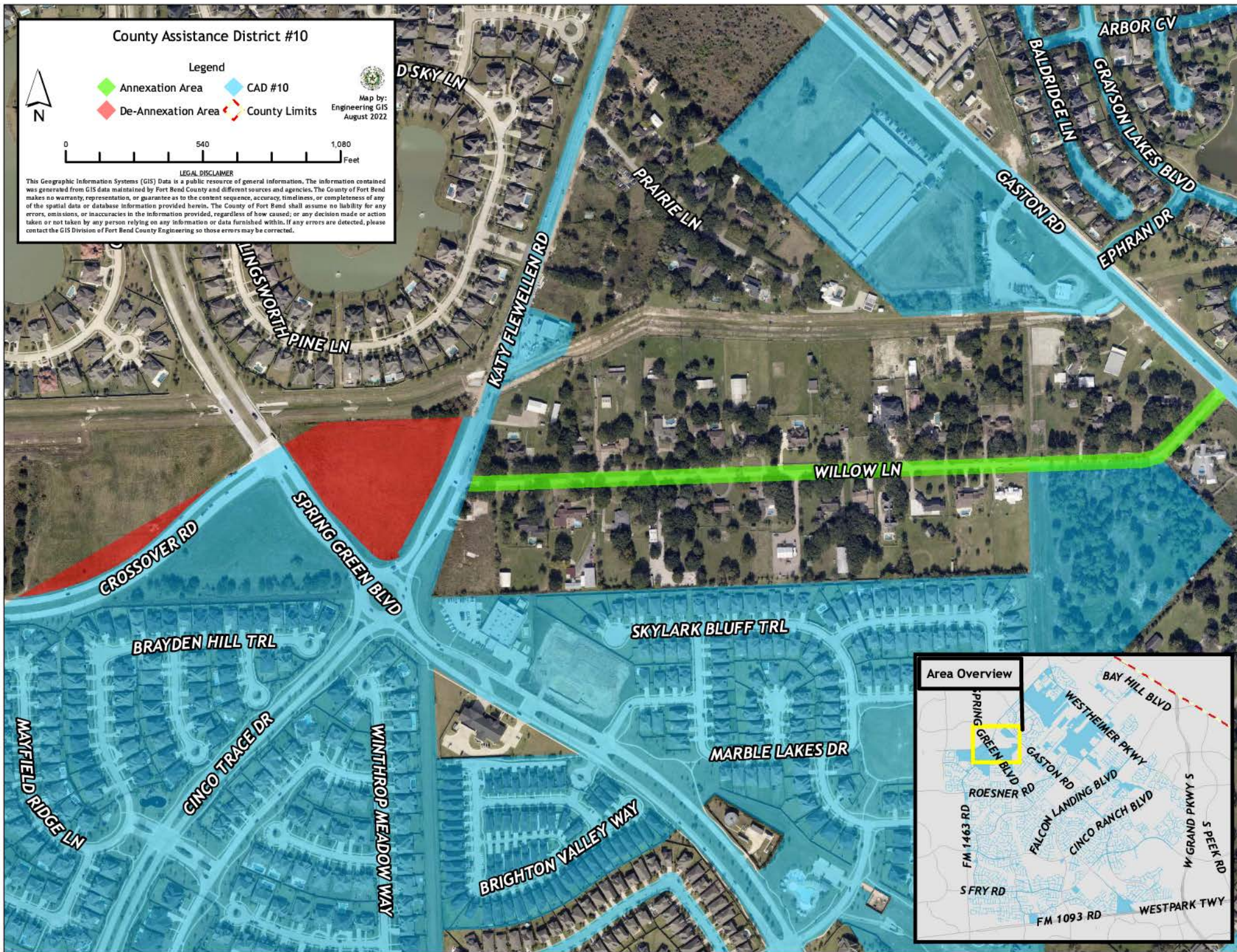


Map by:  
Engineering GIS  
August 2022



## LEGAL DISCLAIMER

This Geographic Information Systems (GIS) Data is a public resource of general information. The information contained was generated from GIS data maintained by Fort Bend County and different sources and agencies. The County of Fort Bend makes no warranty, representation, or guarantee as to the content, sequence, accuracy, timeliness, or completeness of any of the spatial data or database information provided herein. The County of Fort Bend shall assume no liability for any errors, omissions, or inaccuracies in the information provided, regardless of how caused; or any decision made or action taken or not taken by any person relying on any information or data furnished within. If any errors are detected, please contact the GIS Division of Fort Bend County Engineering so those errors may be corrected.



## Area Overview

