



Fort Bend County Engineering
FORT BEND COUNTY, TEXAS

J. Stacy Slawinski, P.E.
County Engineer

March 9, 2022

Commissioner Grady Prestage
Fort Bend County Precinct 2
303 Texas Parkway Ste 213
Missouri City, Texas 77489

**RE: A. Myers (From Berdett Rd to FM 762)
Mobility Project 13102, Completed July 2021**

Dear Commissioner:

A final inspection of the road for the above referenced was made, and all of the deficiencies have been corrected. This mobility project added three additional turn lanes on the existing A. Myers and Berdett Road. These need to be added and the ROW and pavement widths needs to be adjusted in the road log. In addition, the mobility project constructed a 2-lane boulevard asphalt roadway with shoulders and open ditches between Berdett Rd and FM 762. This portion from Berdett Rd to FM 762 was dedicated by separate instrument, and needs to be added to the road log (6,596.40 LF). The street footage length for this project are as follows:

A. Myers	339.90 LF (.06 miles from FM 762 to 339.9' W of FM 762)
A. Myers	5,933.90 LF (1.12 miles from 339.9' W of FM 762 to 322.6' E Berdett Road)
A. Myers	322.60 LF (.06 miles from 322.6' E Berdett Road to Berdett Road)
Berdett Road	545.50 LF (.10 miles from A. Myers to 545.5' S of A. Myers)
Berdett Road	358.30 LF (.07 miles from 545.5' S of A. Myers to 358.3' S of 545.5' S of A. Myers)
Berdett Road	551.60 LF (.10 miles from A. Myers to 551.6' N of A. Myers)
Berdett Road	134.80 LF (.03 miles from 551.6' N of A. Myers to 134.8' N of 551.6' N of A. Myers)

There is no bond for this project.

If you should have any questions or need additional information please feel free to call.

Sincerely,

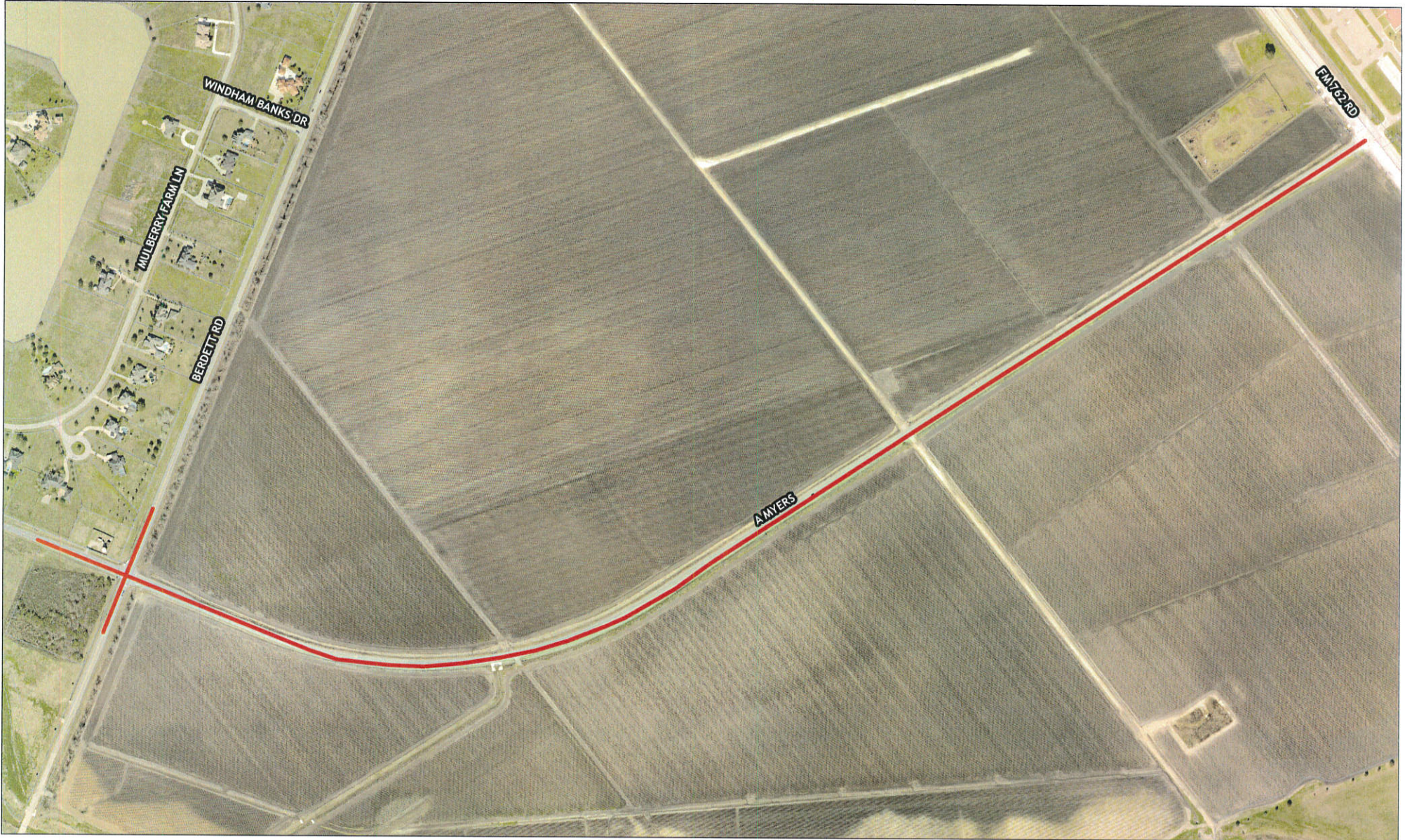

Wesley Crawford
Construction Manager

WC/dms

Attachment

CC: Mr. Scott Wieghat, FBC Road & Bridge
Mr. Gregg Zook, FBC Road & Bridge
File

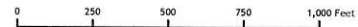
301 Jackson St., Suite 401 | Richmond, TX 77469
Phone 281-633-7500




 Map by
 Engineering GIS
 March 2022

Mobility Project 13102

Legend
 Street Extent



LEGAL DISCLAIMER

This Geographic Information Systems (GIS) Data is a public resource of general information. The information contained was generated from GIS data maintained by Fort Bend County and different sources and agencies. The County of Fort Bend makes no warranty, representation, or guarantee as to the content, sequence, accuracy, timeliness, or completeness of any of the spatial data or database information provided herein. The County of Fort Bend shall assume no liability for any errors, omissions, or inaccuracies in the information provided, regardless of how caused, or any decision made or action taken or not taken by any person relying on any information or data furnished within. If any errors are detected, please contact the GIS Division of Fort Bend County Engineering so those errors may be corrected.

**Fort Bend County
Engineering Department**

COUNTY ROAD LOG

Road/Street Name	Voter Box	Row Width	Surf Width	Asphalt	Concrete	Chipcoat	Gravel	Dirt	Location	SubDivision	Sub Section	Start Point	End Point	Maint Date	Key Map Page	Pct. No.	City
Myers, A.	1007	60	22			1.70			Rosenberg E of			Benton	W Edge of Berdett Pavement	04/28/1986	646B, 7	4	

Report Totals by Type (Miles)

Asphalt: 0.00
 Concrete: 0.00
 Chipcoat: 1.70
 Gravel: 0.00
 Dirt: 0.00

Grand Total: 1.70