



Fort Bend County Engineering
FORT BEND COUNTY, TEXAS

J. Stacy Slawinski, P.E.
County Engineer

January 19, 2022

Judge KP George
Fort Bend County Judge
301 Jackson Street, Suite 719
Richmond, Texas 77406-0148

Re: Public Road Connection for Glimmer Path at FM 359 on behalf of M/I Homes of Houston, LLC. and FBC MUD 195 – Sponsorship

Honorable Judge George:

Fort Bend County Engineering Department has received and reviewed a request (letter attached) from Costello Inc. on behalf of M/I Homes of Houston LLC., for Fort Bend County to sponsor a project for a public road connection for Glimmer Path at FM 359. The road connection will provide a secondary point of access for the Summerview development.

Any and all cost involved with the project will be borne by M/I Homes of Houston LLC., and FBC MUD 195. There will be no cost to Fort Bend County.

The Texas Department of Transportation requests that an agency, such as Fort Bend County, act as a sponsor for the project. This means that the permit for the work will be issued in the name of Fort Bend County and the County accepts responsibility for the terms and conditions of the permit.

We recommend acceptance of the sponsorship and request that this item be placed on the 02/01/2022 Commissioners Court agenda. We have prepared a letter to Texas Department of Transportation for the County Judges' signature.

If there are any questions please do not hesitate to call.

Sincerely,

Maggie Dalton
Development Services Manager

Attachment: Scope of Work

cc: Commissioner Vincent M. Morales, Pct. 1
File



COUNTY JUDGE

Fort Bend County, Texas

The Honorable KP George
County Judge

(281) 341-8608
Fax (832) 471-1858

January 19, 2022

Ms. Eliza Paul, P.E.
District Engineer, Houston District Texas Department of Transportation 7600 Washington Ave.
Houston, TX 77007-1044
Eliza.paul@txdot.gov

Re: Public Road Connection for Glimmer Path at FM 359 on behalf of Mil Homes of Houston, LLC. and FBC MUD 195-Sponsorship

Dear Ms. Paul:

Fort Bend County has received and reviewed a request (letter attached) from Costello Inc. for Fort Bend County to sponsor a Texas Department of Transportation project on behalf of M/I Homes of Houston LLC. and FBC MUD 195 for a public road connection for Glimmer Path at FM 359, at no cost to the County.

The request was approved by Fort Bend County Commissioners Court at their meeting dated 02/01/2022. We request that a permit for the public road connection be issued with Fort Bend County as sponsor for this project.

If there are any questions or need for additional information, please call Maggie Dalton in our Engineering Department at 281-633-7515.

Sincerely,

County Judge KP George

KP George
Fort Bend County Judge

KPG/

Attachments: Resolution
Drawing

cc: Mr. Chad Hartman, Costello Inc. chartmann@costelloinc.com
Ms. Denese Laskowski, TxDOT denese.laskowski@txdot.gov
File

THE STATE OF TEXAS §

COUNTY OF FORT BEND §

**RESOLUTION TO SPONSOR A PROJECT FOR A PUBLIC ROAD CONNECTION
FOR GLIMMER PATH AT FM 359 ON BEHALF OF
M/I HOMES OF HOUSTON LLC. AND FBC MUD 195**

On this 1st day of February, 2022, the Commissioners Court, sitting as the governing body of Fort Bend County, Texas, at a regular meeting, upon motion of Commissioner Meyers, seconded by Commissioner Prestage, duly put and carried;

WHEREAS, the proposed sponsorship project includes the installation of a public road connection at FM 359 for Glimmer Path.

WHEREAS, the funding for such sponsorship of the project is to be provided through sources other than Fort Bend County.

NOW, THEREFORE, BE IT RESOLVED that Fort Bend County expresses its support and sponsorship of such project with the Texas Department of Transportation to cause such improvements to be made at FM 359 for Glimmer Path.

FORT BEND COUNTY

By: _____

KP George
County Judge KP George

KP George, County Judge

ATTEST:

Laura Richard

Laura Richard, County Clerk





January 13, 2022

Honorable Judge KP George
Fort Bend County Judge
301 Jackson Street, Suite 719
Richmond, Texas 77469

Re: Fort Bend County Municipal Utility District No. 195
Request for Sponsorship Letter
Proposed Street Tie-In at FM 359 for Summerview Development
Fort Bend County, Texas
C.I. Job No. 2020-075-S01-DS-101

Dear Honorable Judge KP George:

We respectfully request that Fort Bend County consider sponsoring the project referenced above. The Texas Department of Transportation ("TxDOT") will only consider a permit for the street tie-in of Glimmer Path at FM 359 if you agree to sponsor the work on behalf of Fort Bend County Municipal Utility District No. 195 (the "District"). This will provide the secondary point of access for the Summerview development.

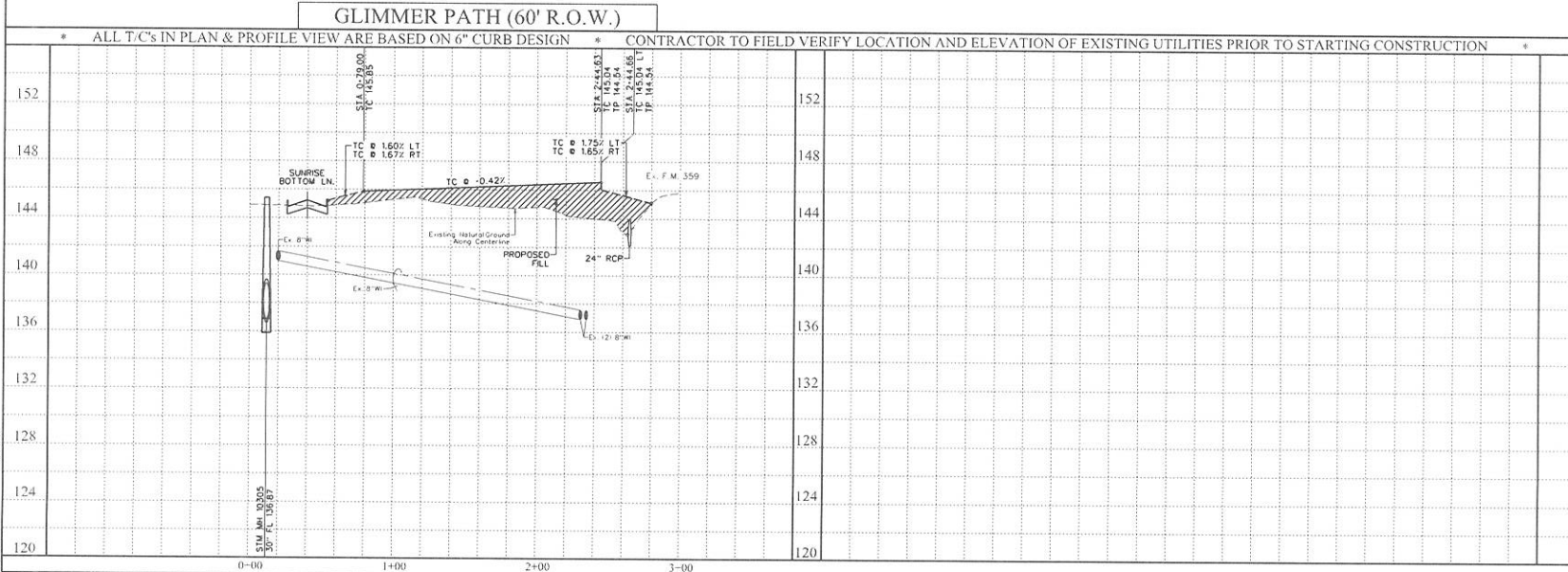
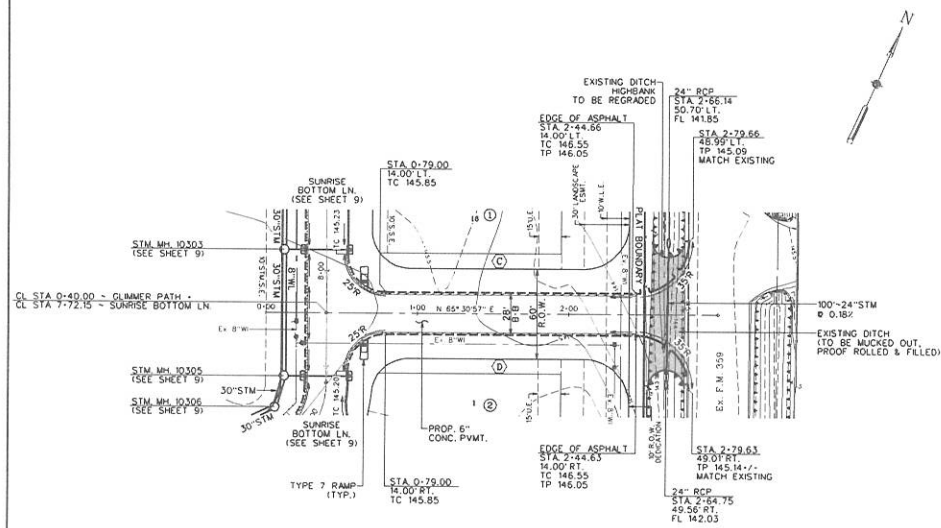
We are preparing the street connection permit application to submit to TxDOT for the proposed Glimmer Path Street Tie-in to FM 359. M/I Homes of Houston, LLC., the developer, will fund the cost of the construction. There will be no expense to Fort Bend County. The attached construction plan drawings were prepared in accordance with TxDOT's street tie-in permit requirements.

Please contact me if you need further information or have any questions.

Sincerely,
Costello, Inc.

A handwritten signature in blue ink that reads "Chad Hartmann". The signature is written in a cursive, flowing style.

Chad Hartmann, P.E.
Project Manager

[illegible]

CI CURVE DATA				
NO.	REVISION	DATE	BY	
DESIGNED BY _____ DESIGN CHECKED BY _____ DRAWN BY _____ CHECKED BY _____ SURVEY CHECKED BY _____ QA QC BY _____ DATE _____ QA QC REVISIONS BY _____				

SUMMerview SECTION THREE

PLAN AND PROFILE

GLIMMER PATH

Castello 12-0-2021

Engineering and Surveying
2007 Claydon Blvd., Unit 100
Houston, Texas 77054
(713) 785-7888 FAX (713) 785-7888
TEXAS PROFESSIONAL ENGINEER NO. 25002
TEXAS PROFESSIONAL SURVEYOR NO. 1000

CHUCK E. HARRISON
10/03/17
Professional Engineer
No. 1000

NOTES

1. 1" - 20" PVC SANITARY RESTRAINED JOINT CENTERED OVERLAPPER ONE (1) 2" PVC WATERLINE JOINT WITH A MINIMUM SEPARATION DISTANCE OF 2" SHALL BE USED. NO HIGH-PRESSURE RATED PIPE AND 1-1/2" FOR PRESSURE RATED PIPE.

2. UNLESS OTHERWISE NOTED, ALL STORM SEWERS AND INLET/OUTS SHALL PROVIDE BELL ENDED CONCRETE PIPE, 12" - 48" CL. 1111 IMPROVED SLOPE, 12" MIN. SLOPES.

3. ALL CURB RADIUS SHALL BE 25' UNLESS OTHERWISE NOTED. MINIMUM SLOPE AROUND CURB RETURN 1:05.

4. EXIST. TIE, BRACKETS WITHIN OR OUT OF CURB TO BE MCKED OUT, PROOF HOLLOW & FILLED.

(V) - INDICATES MIN. VERTICAL CLEARANCE

(T) - INDICATES VERTICAL CURB TRANSITION FROM 2" TO 6" IN 1' OR 1" TO 2" MAX. 10' CL.

(H) - INDICATES AN OFFSET OF 1.08 HORIZONTAL FEET AT 6" FROM 1" TO 2" VERTICAL FEET OR 1" FROM 2" TO 6" VERTICAL FEET. SEE SANITARY SENIOR DETAIL SHEET.

SEE DETAIL SHEET FOR 12" - 24" CURB
4" CURB

DRAWING SCALE		1" = 10' HORIZ. 1" = 4' VERT.
	SHEET	10
		OF 22 SHEETS
JOB NO.		2020075-N01