

THE STATE OF TEXAS §
 §
 COUNTY OF FORT BEND §

PETITION AND CONSENT BY LANDOWNER TO THE
 INCLUSION OF CERTAIN LAND TO
FORT BEND COUNTY ASSISTANCE DISTRICT NO. 11

Fort Bend County, Texas, (referred to herein as the "Petitioner"), is the owner in fee of a certain 112.617-acre tract of land known as "Jones Creek Ranch Park" described in the attached Exhibit A, (the "Proposed Annexation"), and incorporated herein for all purposes.

Fort Bend County Assistance District No. 11 (the "District") was created and authorized to impose a sales and use tax, which may be used for the following purposes within the boundaries of the District: (1) the construction, maintenance, or improvement of roads or highways; (2) the provision of law enforcement and detention services; (3) the maintenance or improvement of libraries, museums, parks, or other recreational facilities; (4) the provision of services that benefit the public health or welfare, including the provision of firefighting and fire prevention services; or (5) the promotion of economic development and tourism.

The Proposed Annexation, being primarily a park and related recreational facility, is in need of certain maintenance and capable of being served by the District. Petitioner hereby petitions the Board of Directors of the District to take all legal steps necessary to include the Proposed Annexation into the boundaries of the District.

Petitioner covenants and agrees that there are no registered voters in the area to be included in the District. Therefore, the District is not required to hold an election for inclusion of the Proposed Annexation or imposition of the District's current sales and use tax within the area being included.

Petitioner agrees that this Petition for inclusion of real estate shall be filed with District and considered by the District's Board of Directors at a public meeting. Petitioner also acknowledges that the District's Board of Directors may enter an Order of Inclusion, and consent in advance of this Petition to include the Proposed Annexation within the boundaries of the District.

RESPECTFULLY SUBMITTED this 4 day of May, 2021.

FORT BEND COUNTY, TEXAS

KP George

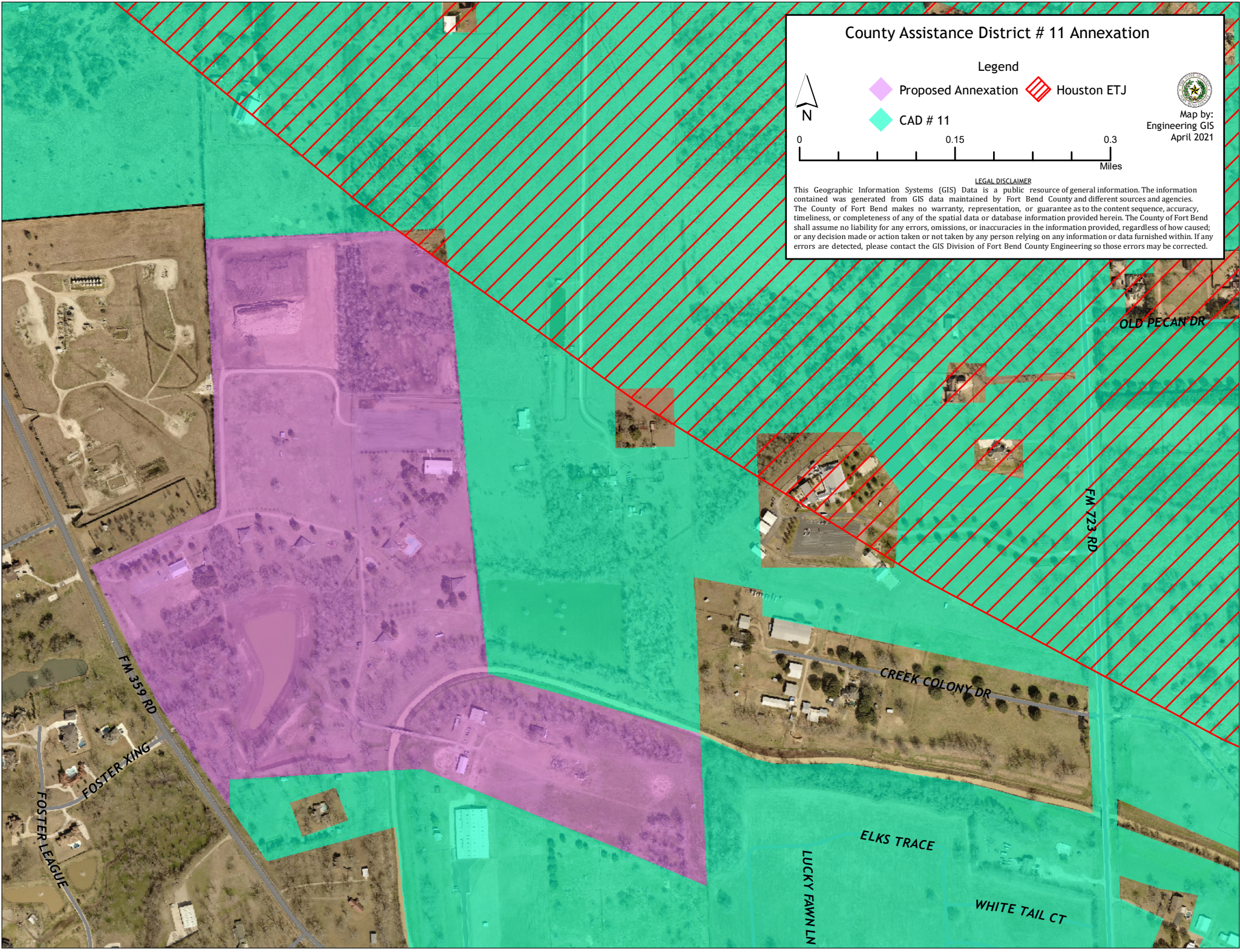
By: _____
County Judge KP George
KP George, County Judge

Date: 5.4.2021

ATTEST:

Laura Richard
By: _____
Laura Richard, County Clerk





County Assistance District # 11 Annexation

Proposed Annexation

Houston ETJ

CAD # 11

0

0.15

0.3

Miles



Map by:
Engineering GIS
April 2021

LEGAL DISCLAIMER
This Geographic Information Systems (GIS) Data is a public resource of general information. The information contained was generated from GIS data maintained by Fort Bend County and different sources and agencies. The County of Fort Bend makes no warranty, representation, or guarantee as to the content sequence, accuracy, timeliness, or completeness of any of the spatial data or database information provided herein. The County of Fort Bend shall assume no liability for any errors, omissions, or inaccuracies in the information provided, regardless of how caused; or any decision made or action taken or not taken by any person relying on any information or data furnished within. If any errors are detected, please contact the GIS Division of Fort Bend County Engineering so those errors may be corrected.

EXHIBIT A

THE STATE OF TEXAS §
 §
COUNTY OF FORT BEND §

ORDER OF INCLUSION OF CERTAIN LAND TO
FORT BEND COUNTY ASSISTANCE DISTRICT NO. 11

RECITALS

WHEREAS, on the date signed hereto below, Fort Bend County Assistance District No. 11 (the "District") received and considered the Petition and Consent by Landowner to the Inclusion of Certain Land to the District, signed and brought forward by Fort Bend County, Texas (referred to as the "Petitioner"); and

WHEREAS, the District finds that the Petitioner is the owner in fee of a certain 112.617-acre tract of land known as "Jones Creek Ranch Park" described in the attached Exhibit A, (the "Proposed Annexation"), and incorporated herein for all purposes; and

WHEREAS, the District also finds that there are no registered voters in the area to be included in the District and therefore, no election is required; and

WHEREAS, Section 387.003(f) of the Texas Local Government Code permits the District by order, to include an area in the District on receipt of a petition or petitions signed by the owner or owners of a majority of the land in the area to be included in the District; and


NOW THEREFORE, BE IT ORDERED BY THE BOARD OF DIRECTORS OF THE DISTRICT THAT:

Section 1: The Proposed Annexation is hereby included within the boundaries of the District by annexation, eligible for the functions permitted to be performed by the District, including but not limited to the maintenance or improvement of libraries, museums, parks, or other recreational facilities.

Section 2: This Order is effective immediately upon passage.

ADOPTED this 4 day of May, 2021.

**FORT BEND COUNTY ASSISTANCE
DISTRICT NO. 11**

By: 
County Judge KP George
KP George, County Judge

Date: 5.4.2021

ATTEST:


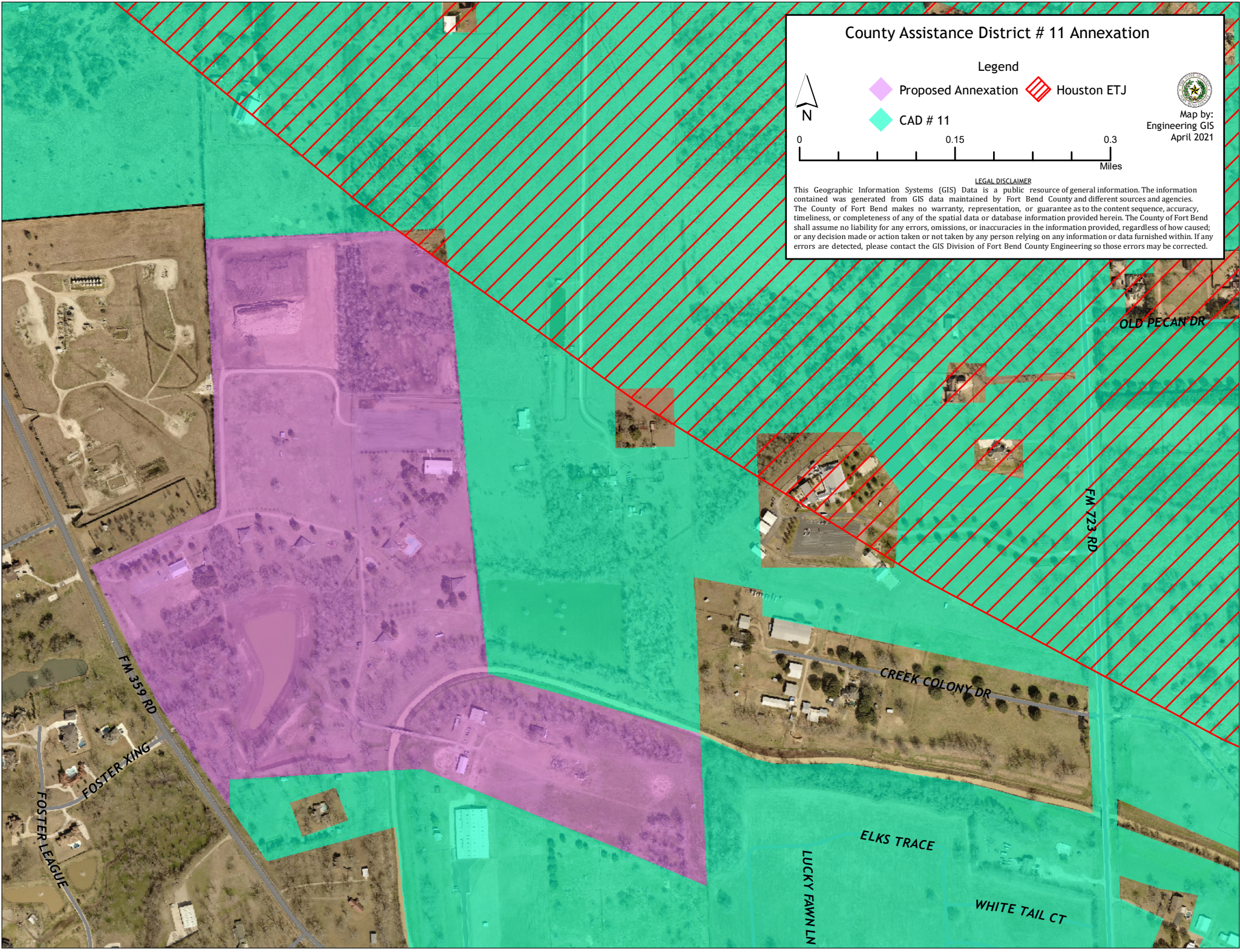
By: 
Laura Richard, County Clerk



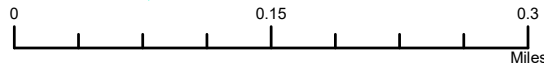
EXHIBIT A



County Assistance District # 11 Annexation

Legend

- Proposed Annexation
- CAD # 11
- Houston ETJ



LEGAL DISCLAIMER

This Geographic Information Systems (GIS) Data is a public resource of general information. The information contained was generated from GIS data maintained by Fort Bend County and different sources and agencies. The County of Fort Bend makes no warranty, representation, or guarantee as to the content sequence, accuracy, timeliness, or completeness of any of the spatial data or database information provided herein. The County of Fort Bend shall assume no liability for any errors, omissions, or inaccuracies in the information provided, regardless of how caused; or any decision made or action taken or not taken by any person relying on any information or data furnished within. If any errors are detected, please contact the GIS Division of Fort Bend County Engineering so those errors may be corrected.



Map by:
Engineering GIS
April 2021