



September 1, 2020

Subject: STL 647321 RLOC
Location: Reading and Benton Rd
Fort Bend Service Area

Dear Street Light Requestor,

Per your request, CenterPoint Energy has prepared an estimate of cost to relocate STL 647321. It is our understanding this request is being made due to construction by your company.

The total cost for this request is **\$2,764.00.00**, which is not subject to refund. This estimate is valid for **180 days** from date of creation.

Your signature or designee's signature below will be our acknowledgment of your company's acceptance to the above mentioned terms and associated charges. Also, a check for the noted amount made payable to *CenterPoint Energy*, will be our authority to proceed with the necessary work. The work will be completed approximately 30 business days after payment is received; weather permitting. Please send the check and the **original signed copy** of this agreement to:

CenterPoint Energy
Attn: David Miranda
4700 S. Shaver, Bldg. I Rm 313
Houston, TX 77034

If you have any questions, please contact me at (713)-945-3253.

Sincerely,

David Miranda
Associate Service Consultant
Street Lighting Operations
Distribution Project Management

Approved and accepted this 6 day of April, 2021.

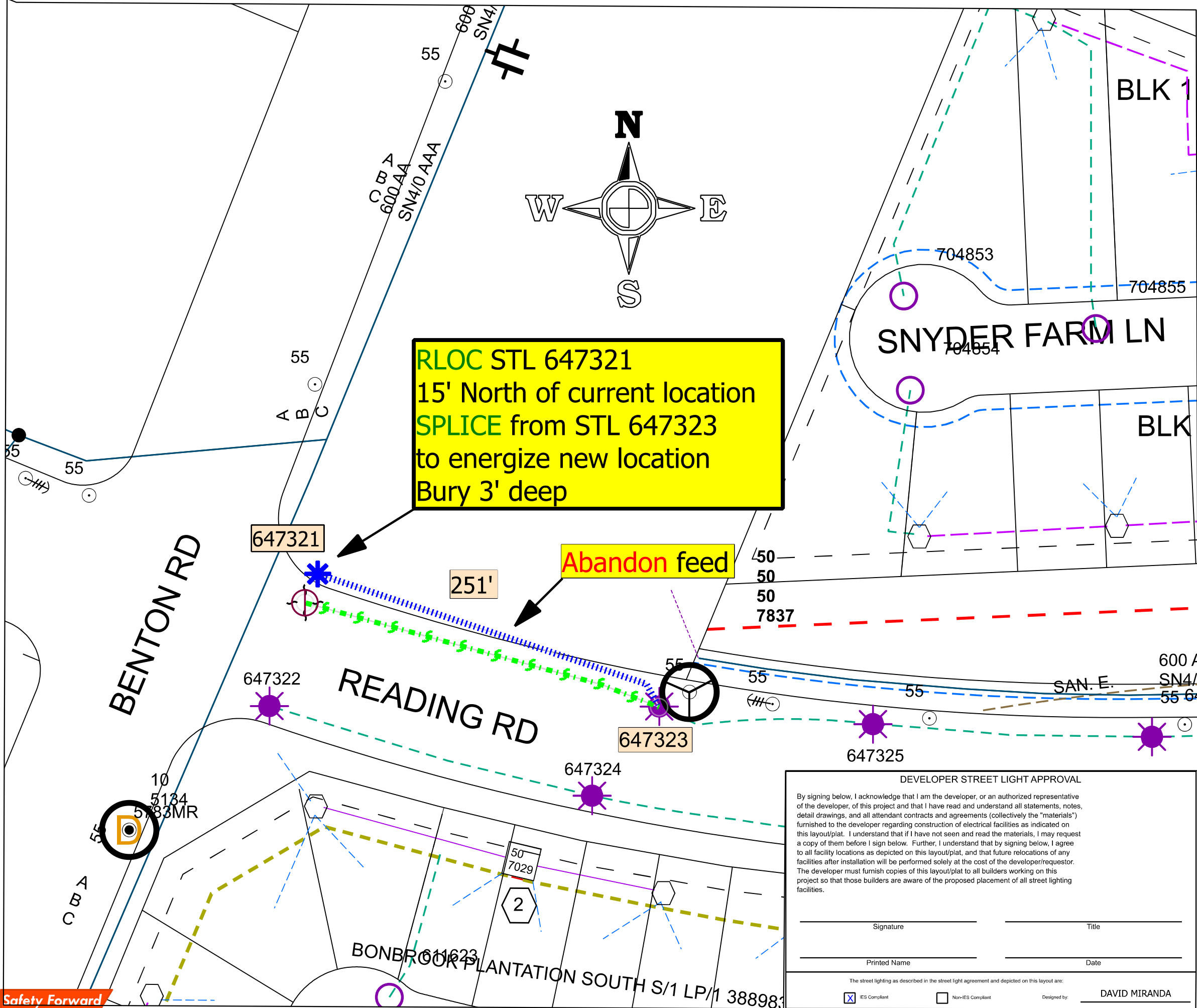
Signature 

Printed Title County Judge KP George

Printed Name KP George

Mailing Address 301 Jackson Street, Richmond Texas 77469

WO# 95287625



STREET LIGHT PLACEMENT DETAIL

STREET LIGHT STANDARDS WILL NORMALLY BE INSTALLED IN ROAD RIGHT OF WAY 3' BACK OF CURB AND IN ALIGNMENT WITH SIDE LOT OR REAR PROPERTY LINES, UNLESS THERE IS A CONFLICT WITH DRIVEWAY, FIRE HYDRANT, CATCH BASIN, WATERMETER, OTHER OBSTRUCTIONS, OR WHEN IES RECOMMENDS SPACING REQUIRE OTHERWISE. IN CASE OF CONFLICT WITH O.H. DISTRIBUTION AT REAR OF PROPERTY, STANDARD IS TO BE INSTALLED 8' NORTH OR WEST OF PROPERTY LINE. AT STREET INTERSECTIONS, STANDARDS ARE TO BE INSTALLED BEHIND STRAIGHT SECTION OF CURB 2' FROM TANGENT POINT. STANDARDS SHALL BE PLACED ON STREET SIDE OPPOSITE FROM NORMAL STOP SIGN LOCATIONS.

LIGHTING DESIGN SERVICES - LIGHTING LEGEND

IMPORTANT NOTE: READ SPECIAL INSTRUCTIONS BELOW AND REFERENCE ANY SPECIAL NEEDS THAT MAY BE SHOWN ON SKETCH.

NEW STREET LIGHT INSTALLATION SYMBOLS

SYMBOLS	QUANTITY		SINGLE LAMP WATTAGE AND TYPE (Circle One Lamp Type for Each Wattage)		LED LEGEND	
	OH - 0	UG - 0	100W HPS MH	150W HPS MH	175W HPS MH	250W HPS MH
	0	0	100W HPS MH	150W HPS MH	175W HPS MH	250W HPS MH
	0	0	150W HPS MH	175W HPS MH	250W HPS MH	400W HPS MH
	0	0	175W HPS MH	250W HPS MH	400W HPS MH	LED LEGEND
	0	0	250W HPS MH	400W HPS MH	LED LEGEND	LED LEGEND
	0	0	400W HPS MH	LED LEGEND	LED LEGEND	LED LEGEND

SYMBOLS QUANTITY DUAL UG ONLY LAMP WATTAGE AND TYPE
(Circle One Lamp Type for Each Wattage)

	0	100W HPS MH	150W HPS MH	175W HPS MH	250W HPS MH	400W HPS MH
	0	150W HPS MH	175W HPS MH	250W HPS MH	400W HPS MH	LED LEGEND
	0	175W HPS MH	250W HPS MH	400W HPS MH	LED LEGEND	LED LEGEND
	0	250W HPS MH	400W HPS MH	LED LEGEND	LED LEGEND	LED LEGEND
	0	400W HPS MH	LED LEGEND	LED LEGEND	LED LEGEND	LED LEGEND

ADDITIONAL INSTALLATION MATERIAL SYMBOLS

TP	0	TERMINAL POLE		0	RELAY
X	0	PROPOSED WOOD POLE		0	PULLBOX
	0	12KV 35KV PROPOSED OVERHEAD TRANSFORMER			

UNDERGROUND CONDUCTOR (Check One)

	251'	Direct Embedded Wire	X
	---	Conduit and Wire	

OVERHEAD CONDUCTOR

	---	#4 2/C TWIST (UNLESS OTHERWISE NOTED)	
--	-----	---------------------------------------	--

EXISTING STREET LIGHT SYMBOLS AND WATTAGES

	250 MH		70		100		150		175		250		400
INSTALLATION VOLTAGE: (Circle One Only) 120 240 480													

DDS DESIGN

WO BY: David Miranda	W.O.#: 95287625
PHONE: 713-945-3253	KEY MAP #: 606X
CELL:	LAMBERT #: 4547
DATE: 9/1/2020	SERVICE CENTER: FTB
TYPE: HLC2-512	SCALE - 1" = 65'

Street Light Notes

- All streets must be curbed and guttered prior to the installation of street lighting facilities unless otherwise approved by the Lighting Design Service Department.
- Dedicated street light easements are required along all placement of street lighting facilities when such facilities are installed along private streets. Street lighting will only be installed along private streets that can be accessed for maintenance and only when such a street is constructed in an easement intended to contain a private street, waterlines, sanitary sewer lines, storm sewer, and such other utility or franchise infrastructures as can be accommodated and which, for the purpose of established setback, will be considered to be the equal of a public street.
- The design of all streets, utility easements, and storm sewer easements must be approved by all appropriate reviewing agencies before the installation of street lighting.
- Street lighting will be installed to the recommendations of the illuminating Engineering Society unless otherwise requested and agreed upon in writing by the requestor of street lighting service.