**COUNTY JUDGE**

Fort Bend County, Texas

The Honorable KP George
County Judge(281) 341-8608
Fax (281) 341-8609

November 5, 2019

Mr. Quincy Allen, P.E.
District Engineer, Houston District
Texas Department of Transportation
P.O. Box 1386
Houston, TX 77251-1386

Re: Sponsorship - Public Road Connections at proposed minor connector roads along the southbound (2) locations, and northbound (1) location frontage road of U.S. 59 near the intersection of FM 762, within the Circle Oak Development on behalf Fort Bend County Municipal Utility District No. 207

Dear Mr. Allen:

Fort Bend County has received and reviewed a request from LJA Engineering, Inc., for Fort Bend County to sponsor a Texas Department of Transportation project on behalf of Fort Bend County Municipal Utility District No. 207, for public road connections along the southbound (2) locations, and northbound (1) location frontage road of U.S. 59 near the intersection of FM 762, within the Circle Oak Development, at no cost to the County.

The request was approved by Fort Bend County Commissioner's Court at our meeting of November 5, 2019. We request that a permit for the public road connections be issued with Fort Bend County as sponsor for this project.

If there are any questions or need for additional information, please call Rick J. Staigle, P.E. in our Engineering Department at 281-633-7509.

Sincerely,

A handwritten signature in black ink that reads "KP George".

KP George
Fort Bend County JudgeEnclosures: Resolution
Drawingcc: Mr. Michael S. Rusk, P.E., LJA Engineering, Inc. mrusk@lja.com
Mr. James Pottharst, LJA Engineering, Inc. jpottharst@lja.com



Fort Bend County Engineering
FORT BEND COUNTY, TEXAS.

J. Stacy Slawinski, P.E.
County Engineer

October 25, 2019

Judge KP George
Fort Bend County Judge
401 Jackson Street, Suite 719
Richmond, Texas 77406-0148

Re: Sponsorship - Public Road Connections at proposed minor connector roads along the southbound (2) locations, and northbound (1) location frontage road of U.S. 59 near the intersection of FM 762, within the Circle Oak Development on behalf Fort Bend County Municipal Utility District No. 207

Honorable Judge George:

Fort Bend County Engineering Department has received and reviewed a request (letter attached) from LJA Engineering, Inc., for Fort Bend County to sponsor a project for a public road connections at proposed minor connector road along along the southbound (2) locations, and northbound (1) location frontage road of U.S. 59 near the intersection of FM 762 within the Circle Oak Development on behalf Fort Bend County Municipal Utility District No. 207. The locations are referenced as location B, C and E on the plans. The public road connections will improve traffic flow along U.S. 59.

Any and all cost involved with the project will be borne by Fort Bend County Municipal Utility District No. 207. There will be no cost to Fort Bend County.

The Texas Department of Transportation requests that an agency, such as Fort Bend County, act as a sponsor for the project. This means that the permit for the work will be issued in the name of Fort Bend County and the County accepts responsibility for the terms and conditions of the permit.

We recommend acceptance of the sponsorship and request that this item be placed on the 11/05-2019 Commissioner's Court agenda. We have prepared a letter to Texas Department of Transportation, for the County Judges' signature.

If there are any questions please do not hesitate to call.

Sincerely,

Rick J. Staigle, PE, PTOE

Rick J. Staigle, PE, PTOE
First Assistant County Engineer

Attachment: Scope of Work

cc: Mr. Roy Cordes, Jr. FBC Attorney
Commissioner Vincent M. Morales, Jr., Pct. 1
File

301 Jackson St., Suite 401, Richmond, TX 77469
Phone 281-633-7500

THE STATE OF TEXAS §

COUNTY OF FORT BEND §

RESOLUTION TO SPONSOR A PROJECT TO CONSTRUCT A PUBLIC ROAD CONNECTION, AT PROPOSED MINOR CONNECTOR ROADS ALONG THE SOUTHBOUND (2) LOCATIONS, AND NORTHBOUND (1) LOCATION FRONTAGE ROAD OF U.S. 59 NEAR THE INTERSECTION OF FM 762, WITHIN THE CIRCLE OAK DEVELOPMENT ON BEHALF FORT BEND COUNTY MUNICIPAL UTILITY DISTRICT NO. 207

On this 5th day of November, 2019, the Commissioners Court, sitting as the governing body of Fort Bend County, Texas, at a regular meeting, upon motion of Commissioner Meyers, seconded by Commissioner Morales, duly put and carried;

WHEREAS, the proposed sponsorship project includes the installation of public road connections along the southbound (2) locations, and northbound (1) location frontage road of U.S. 59 near the intersection of FM 762, within the Circle Oak Development.

WHEREAS, the funding for such sponsorship of the project is to be provided through sources other than Fort Bend County.

NOW, THEREFORE, BE IT RESOLVED that Fort Bend County expresses its support and sponsorship of such project with the Texas Department of Transportation to cause such improvements to be made at proposed minor connector road at U.S. 59.

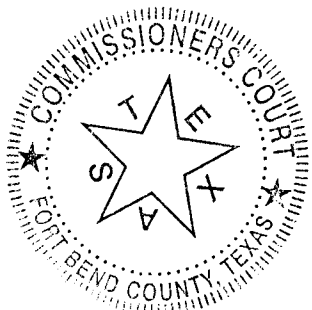
FORT BEND COUNTY

By: _____

JP George
JP George, County Judge

ATTEST:

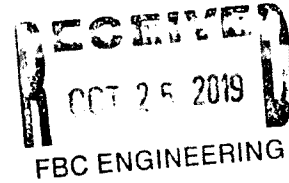
Laura Richard
Laura Richard, County Clerk





1904 W Grand Parkway N, Suite 100, Katy, Texas 77449
t 713.953.5200 f 713.953.5026 LJA.com TBPE F-1386

October 25, 2019



Mr. J. Stacy Slawinski
Fort Bend County
301 Jackson Street
Richmond, Texas 77469

Re: Request for Sponsorship Letter
Proposed Street Tie-in at Frontage Roads of
Southbound & Northbound US 59
Fort Bend County, Texas
LJA Job No. 1455-1719 (6.0)

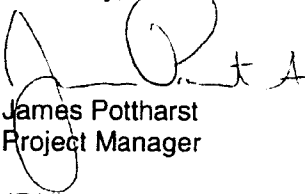
Dear Mr. Slawinski:

LJA Engineering, Inc. has prepared a driveway permit application and submitted it to the Texas Department of Transportation (TxDOT) for the proposed street tie-ins of minor connector roads along the southbound (2) and northbound (1) frontage road of US 59, near the intersection of FM 762. Fort Bend County Municipal Utility District No. 207 will fund the cost of construction. There will be no expense to Fort Bend County. The attached construction plan drawings were prepared in accordance with TxDOT's street tie-in permit requirements.

As part of the permit application process, TxDOT is requiring a sponsorship letter from Fort Bend County. I am requesting Fort Bend County's sponsorship of this project and a sponsorship letter to submit to TxDOT as a part of the permit application.

Should you have any questions, please contact me at 713.380.4414

Sincerely,



James Pottharst
Project Manager

JP/dl

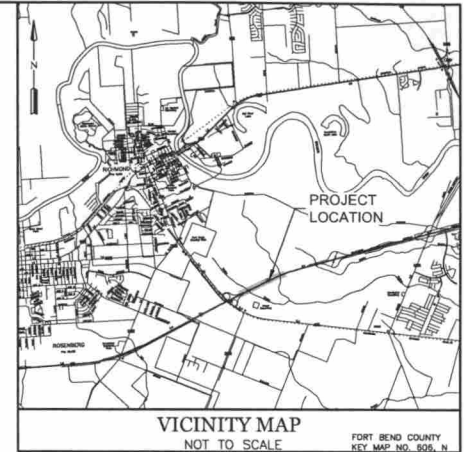
Attachment(s)

CONSTRUCTION PLANS FOR TxDOT DRIVEWAY PERMITS TO SERVE CIRCLE OAK

FORT BEND COUNTY MUNICIPAL UTILITY DISTRICT NO. 207
CITY OF RICHMOND, FORT BEND COUNTY, TEXAS

JOB NO. 2198-1701B

DATE: MARCH 2019



SHEET INDEX

1. COVER SHEET
2. DRIVEWAY LOCATIONS LAYOUT
3. DRAINAGE AREA MAP LAYOUT
4. DRIVEWAY DETAILS
5. LANE CLOSURE DETAIL SHEET
6. TxDOT DRIVEWAY DETAILS

NOTES

1. THESE PLANS WERE PREPARED TO MEET OR EXCEED THE CITY OF RICHMOND SUBDIVISION RULES AND REGULATIONS (AS APPLICABLE) AS CURRENTLY AMENDED.
2. CONSTRUCTION WILL BE MONITORED BY A PROFESSIONAL ENGINEER TO INSURE COMPLIANCE WITH THE CONSTRUCTION PLANS AND SPECIFICATIONS.
3. CONTRACTOR SHALL NOTIFY THE FOLLOWING ENTITIES AT LEAST 48 HOURS PRIOR TO COMMENCEMENT OF CONSTRUCTION:

CITY OF RICHMOND ENGINEER'S OFFICE FORT BEND COUNTY DRAINAGE DISTRICT (S.WAYNE CIRGAR) FORT BEND COUNTY ENGINEER TEXAS ONE CALL	(281) 341-0000 (281) 242-2893 CONSTRUCTION@FORTBENDCOUNTY.TX.GOV 1-800-245-4545
--	--
4. CONTRACTOR SHALL CONTACT ANY PERTINENT PIPELINE COMPANIES AT LEAST 48 HOURS PRIOR TO COMMENCEMENT OF EXCAVATION OR CONSTRUCTION IN THE VICINITY OF THEIR EASEMENTS AND/OR RIGHT-OF-WAYS.
5. IN THE CASE OF A CONFLICT BETWEEN THE CITY OF RICHMOND, FORT BEND COUNTY, PLANS OR SPECIFICATIONS, THE MORE STRINGENT SHALL APPLY.

WS&D RECORD DRAWING

I HEREBY CERTIFY THAT THIS DRAWING REFLECTS THE IMPROVEMENTS CONSTRUCTED AS TO SIZE, LOCATION, AND GRADE; AND THAT THE CONSTRUCTION WAS IN SUBSTANTIAL COMPLIANCE WITH THE CONTRACT DOCUMENTS.

CONTRACTOR: _____ DATE: _____
TITLE: _____

PAVE RECORD DRAWING

I HEREBY CERTIFY THAT THIS DRAWING REFLECTS THE IMPROVEMENTS CONSTRUCTED AS TO SIZE, LOCATION, AND GRADE; AND THAT THE CONSTRUCTION WAS IN SUBSTANTIAL COMPLIANCE WITH THE CONTRACT DOCUMENTS.

CONTRACTOR: _____ DATE: _____
TITLE: _____

ONE-CALL NOTIFICATION SYSTEM
 CALL BEFORE YOU DIG!
 (713) 223-4567 (IN HOUSTON)
 (NEW STATUTE NUMBER OUTSIDE HOUSTON)
 1-800-545-6005



ENGINEER:

LJA Engineering, Inc.

2929 Briarpark Drive
Suite 600
Houston, Texas 77042-3703

Phone 713.953.5200
Fax 713.953.5026
FRN-F-1386

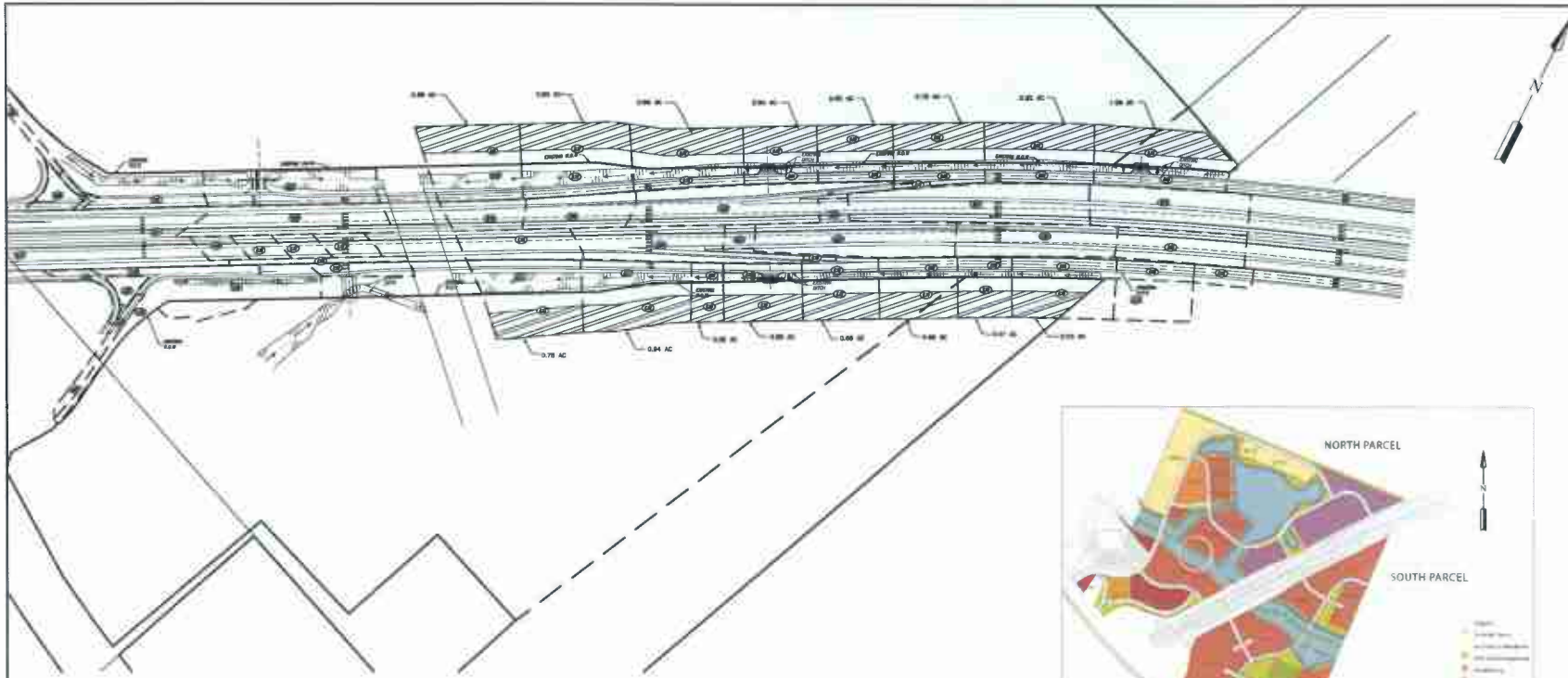
**LAND OWNER:
THE GEORGE FOUNDATION**

APPROVED FOR CONSTRUCTION

BY _____ DATE _____

D:\Projects\2198-1701B\CIRCLE OAK\DRIVEWAY PERMITS\2198-1701B\CONSTRUCTION\DRIVEWAY PERMITS\2198-1701B\COVER SHEET.dwg

CIRCLE OAK TxDOT DRIVEWAY PERMITS - JOB NO. 2198-1701B



CULVERT FLOWS AND SIZING



DRIVEWAY #	TOTAL ACREAGE	REDUCTION ACREAGE	NEW ACREAGE	C	T, USED	1/8	Q2
TOTAL FROM DRIVEWAY C	1.86	1.07	0.82				5.15
E01	0.43	0	0.43				2.6
E02	0.43	0	0.43				2.6
E03	0.43	0	0.43				2.6
E04	0.43	0	0.43				2.6
E05	0.43	0	0.43				2.6
E06	0.43	0	0.43				2.6
E07	0.43	0	0.43				2.6
E08	0.43	0	0.43				2.6
E09	0.43	0	0.43				2.6
E10	0.43	0	0.43				2.6
E11	0.43	0	0.43				2.6
E12	0.43	0	0.43				2.6
E13	0.43	0	0.43				2.6
E14	0.43	0	0.43				2.6
E15	0.43	0	0.43				2.6
E16	0.43	0	0.43				2.6
E17	0.43	0	0.43				2.6
E18	0.43	0	0.43				2.6
E19	0.43	0	0.43				2.6
E20	0.43	0	0.43				2.6
E21	0.43	0	0.43				2.6
E22	0.43	0	0.43				2.6
E23	0.43	0	0.43				2.6
E24	0.43	0	0.43				2.6
E25	0.43	0	0.43				2.6
E26	0.43	0	0.43				2.6
E27	0.43	0	0.43				2.6
E28	0.43	0	0.43				2.6
E29	0.43	0	0.43				2.6
E30	0.43	0	0.43				2.6
E31	0.43	0	0.43				2.6
E32	0.43	0	0.43				2.6
E33	0.43	0	0.43				2.6
E34	0.43	0	0.43				2.6
E35	0.43	0	0.43				2.6
E36	0.43	0	0.43				2.6
E37	0.43	0	0.43				2.6
E38	0.43	0	0.43				2.6
E39	0.43	0	0.43				2.6
E40	0.43	0	0.43				2.6
E41	0.43	0	0.43				2.6
E42	0.43	0	0.43				2.6
E43	0.43	0	0.43				2.6
E44	0.43	0	0.43				2.6
E45	0.43	0	0.43				2.6
E46	0.43	0	0.43				2.6
E47	0.43	0	0.43				2.6
E48	0.43	0	0.43				2.6
E49	0.43	0	0.43				2.6
E50	0.43	0	0.43				2.6
E51	0.43	0	0.43				2.6
E52	0.43	0	0.43				2.6
E53	0.43	0	0.43				2.6
E54	0.43	0	0.43				2.6
E55	0.43	0	0.43				2.6
E56	0.43	0	0.43				2.6
E57	0.43	0	0.43				2.6
E58	0.43	0	0.43				2.6
E59	0.43	0	0.43				2.6
E60	0.43	0	0.43				2.6
E61	0.43	0	0.43				2.6
E62	0.43	0	0.43				2.6
E63	0.43	0	0.43				2.6
E64	0.43	0	0.43				2.6
E65	0.43	0	0.43				2.6
E66	0.43	0	0.43				2.6
E67	0.43	0	0.43				2.6
E68	0.43	0	0.43				2.6
E69	0.43	0	0.43				2.6
E70	0.43	0	0.43				2.6
E71	0.43	0	0.43				2.6
E72	0.43	0	0.43				2.6
E73	0.43	0	0.43				2.6
E74	0.43	0	0.43				2.6
E75	0.43	0	0.43				2.6
E76	0.43	0	0.43				2.6
E77	0.43	0	0.43				2.6
E78	0.43	0	0.43				2.6
E79	0.43	0	0.43				2.6
E80	0.43	0	0.43				2.6
E81	0.43	0	0.43				2.6
E82	0.43	0	0.43				2.6
E83	0.43	0	0.43				2.6
E84	0.43	0	0.43				2.6
E85	0.43	0	0.43				2.6
E86	0.43	0	0.43				2.6
E87	0.43	0	0.43				2.6
E88	0.43	0	0.43				2.6
E89	0.43	0	0.43				2.6
E90	0.43	0	0.43				2.6
E91	0.43	0	0.43				2.6
E92	0.43	0	0.43				2.6
E93	0.43	0	0.43				2.6
E94	0.43	0	0.43				2.6
E95	0.43	0	0.43				2.6
E96	0.43	0	0.43				2.6
E97	0.43	0	0.43				2.6
E98	0.43	0	0.43				2.6
E99	0.43	0	0.43				2.6
E100	0.43	0	0.43				2.6

DRIVEWAY	TOTAL		LINE/BOX		SIZES		MIN/IN		V		FLOWLINE		SLOPE
	IN	FT	IN	FT	IN	FT	IN	FT	IN	FT	IN	FT	
DRIVEWAY B	11.74	55.298	72	8.875	87.78	6.543	15.91	98.449	99.024	2.18			
DRIVEWAY C	1.14	6.05	24	2.674	18.51	6.913	9.21	75.958	72.648	2.98			
DRIVEWAY E	16.77	102	72	5.225	215.53	0.015	7.65	89.844	89.704	2.16			

NOTE:
DUAL 36" R.C.P. PIPES ARE PROPOSED IN LIEU OF 72" R.C.P.

LEGEND

- PROPOSED STORM SEWER AND MANHOLE
- EXISTING / FUTURE STORM SEWER AND MANHOLE
- PROPOSED STORM SEWER, MANHOLE, AND 1'-2" INLETS
- PROPOSED PAVEMENT
- INDICATES DRAINAGE AREA
- INDICATES DIKE
- DRAINAGE AREA REMOVED FROM TxDOT DRAINAGE AREA MAP

BENCHMARK:
SIN 150-A ALUMINUM DISK STAMPED TXXOT LOCATED AT THE NORTHERLY CORNER OF THE INTERSECTION OF THE SOUTHWEST BRIDGE FRONTAGE ROAD OF FM 59 AND FM 782. THE POINT IS LOCATED +/- 33 FEET NORTHWEST FROM THE EDGE OF PAVEMENT OF THE ABOVE MENTIONED FRONTAGE ROAD AND +/- 80 FEET NORTHWEST OF THE NORTHEASTLY EDGE OF PAVEMENT OF FM 782. ELEVATION = 82.53 FEET NAVD83 Geoid 782

NOTES:

RECORD DRAWING
I HEREBY CERTIFY THAT THIS DRAWING REFLECTS THE IMPROVEMENTS CONSTRUCTED AS TO SIZE, LOCATION, AND GRADE AND THAT THE CONSTRUCTION HAS IN SUBSTANTIAL COMPLIANCE WITH THE CONTRACT DOCUMENTS.
CONTRACTOR: _____ DATE: _____
TITLE: _____

DATE	REVISION	BY

FORT BEND COUNTY MUNICIPAL UTILITY DISTRICT No. 207

CIRCLE OAK DRIVEWAY PERMIT

DRAINAGE AREA MAP LAYOUT

LJA Engineers, Inc.
2929 Briarpark Drive
Suite 600
Houston, Texas 77042
Phone 713.963.5200
Fax 713.963.5605
FBN-1-1386

LJA PROJECT NO.: 2108-17018

DRAWN: S.J.J.P. DATE: MARCH 2019

SCALE: 1" = 200'



Drawn: S.J.J.P. Title: S. J. Johnson, P.E. License: 10888
 Date: 3/15/19
 Project: Circle Oak Driveway Permit
 File: S:\Projects\2108-17018\CAD\DWG\2108-17018-03.DWG

CIRCLE OAK TXXOT DRIVEWAY PERMITS - JOB NO. 2108-17018

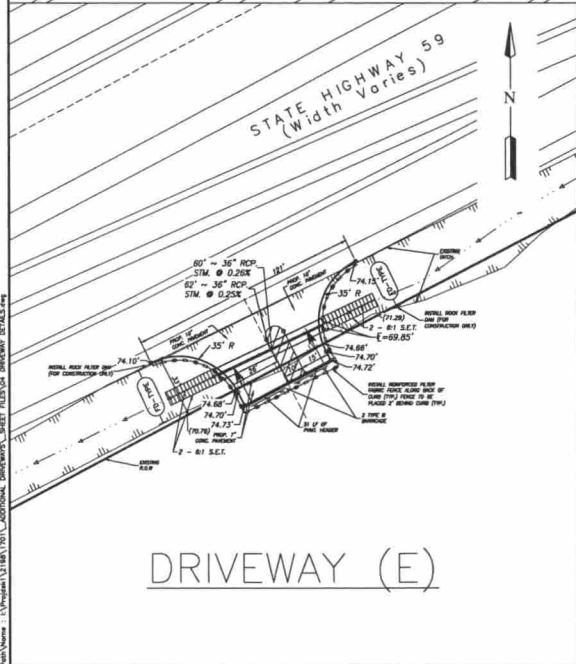
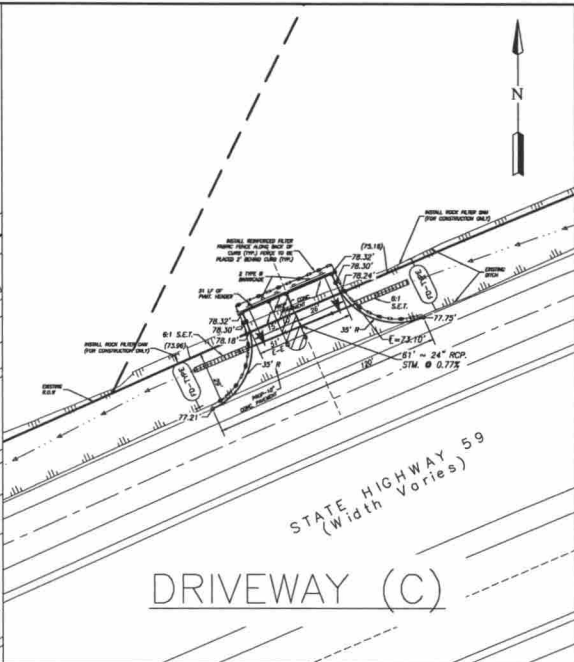
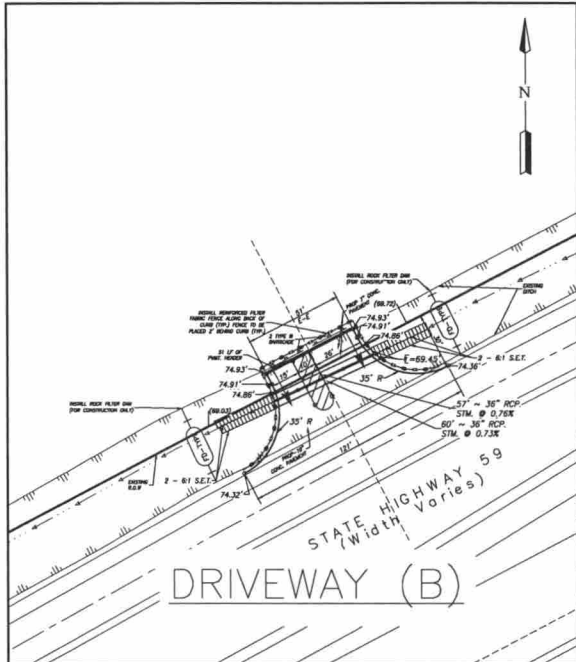


TABLE 1
EQUIVALENT
PAYMENT THICKNESS

T" (IN.)	T _E " (IN.)
4.5	4.5
5.0	4.75
5.5	5.0
6.0	5.25
6.5	5.5
7.0	5.75
7.5	6.0
8.0	6.25
8.5	6.5
9.0	6.75
9.5	7.0
10.0	7.25
10.5	7.5
11.0	7.75
11.5	8.0
12.0	8.25
12.5	8.5
13.0	8.75
13.5	9.0
14.0	9.25
14.5	9.5
15.0	9.75
15.5	10.0
16.0	10.25
16.5	10.5
17.0	10.75
17.5	11.0
18.0	11.25
18.5	11.5
19.0	11.75
19.5	12.0
20.0	12.25
20.5	12.5
21.0	12.75
21.5	13.0
22.0	13.25
22.5	13.5
23.0	13.75
23.5	14.0
24.0	14.25
24.5	14.5
25.0	14.75
25.5	15.0
26.0	15.25
26.5	15.5
27.0	15.75
27.5	16.0
28.0	16.25
28.5	16.5
29.0	16.75
29.5	17.0
30.0	17.25
30.5	17.5
31.0	17.75
31.5	18.0
32.0	18.25
32.5	18.5
33.0	18.75
33.5	19.0
34.0	19.25
34.5	19.5
35.0	19.75
35.5	20.0
36.0	20.25
36.5	20.5
37.0	20.75
37.5	21.0
38.0	21.25
38.5	21.5
39.0	21.75
39.5	22.0
40.0	22.25
40.5	22.5
41.0	22.75
41.5	23.0
42.0	23.25
42.5	23.5
43.0	23.75
43.5	24.0
44.0	24.25
44.5	24.5
45.0	24.75
45.5	25.0
46.0	25.25
46.5	25.5
47.0	25.75
47.5	26.0
48.0	26.25
48.5	26.5
49.0	26.75
49.5	27.0
50.0	27.25
50.5	27.5
51.0	27.75
51.5	28.0
52.0	28.25
52.5	28.5
53.0	28.75
53.5	29.0
54.0	29.25
54.5	29.5
55.0	29.75
55.5	30.0
56.0	30.25
56.5	30.5
57.0	30.75
57.5	31.0
58.0	31.25
58.5	31.5
59.0	31.75
59.5	32.0
60.0	32.25
60.5	32.5
61.0	32.75
61.5	33.0
62.0	33.25
62.5	33.5
63.0	33.75
63.5	34.0
64.0	34.25
64.5	34.5
65.0	34.75
65.5	35.0
66.0	35.25
66.5	35.5
67.0	35.75
67.5	36.0
68.0	36.25
68.5	36.5
69.0	36.75
69.5	37.0
70.0	37.25
70.5	37.5
71.0	37.75
71.5	38.0
72.0	38.25
72.5	38.5
73.0	38.75
73.5	39.0
74.0	39.25
74.5	39.5
75.0	39.75
75.5	40.0
76.0	40.25
76.5	40.5
77.0	40.75
77.5	41.0
78.0	41.25
78.5	41.5
79.0	41.75
79.5	42.0
80.0	42.25
80.5	42.5
81.0	42.75
81.5	43.0
82.0	43.25
82.5	43.5
83.0	43.75
83.5	44.0
84.0	44.25
84.5	44.5
85.0	44.75
85.5	45.0
86.0	45.25
86.5	45.5
87.0	45.75
87.5	46.0
88.0	46.25
88.5	46.5
89.0	46.75
89.5	47.0
90.0	47.25
90.5	47.5
91.0	47.75
91.5	48.0
92.0	48.25
92.5	48.5
93.0	48.75
93.5	49.0
94.0	49.25
94.5	49.5
95.0	49.75
95.5	50.0
96.0	50.25
96.5	50.5
97.0	50.75
97.5	51.0
98.0	51.25
98.5	51.5
99.0	51.75
99.5	52.0
100.0	52.25

- ** WITH BASE STRUCTURE OF:
 - 1" ASPHALT STABILIZED BASE
 - 6" PORTLAND CEMENT TREATED BASE
 - 6" LIME TREATED SUBGRADE
- ** ON AS CUT SURFACE
- ** SEE JOINT SEALING DETAILS ON CRCP STANDARDS

- GENERAL NOTES
1. DEFINITION OF TERMS
 - T₁ = FAST TRACK CONCRETE PAVING DEPTH AT INTERSECTIONS AND LEAVE OUT.
 - T₂ = NOMINAL CONCRETE PAVING DEPTH AS SHOWN IN THE PLANS.
 - RETAINING FAST TRACK CONCRETE PAVING DEPTH USING TABLE 1 AND THE NOMINAL CONCRETE PAVING DEPTH "T" SHOWN IN THE PLANS.
 2. AT INTERSECTIONS AND LEAVE-OUT LOCATIONS USE THE SAME LONGITUDINAL AND TRANSVERSE BAR SPACING FOR THE FAST TRACK PAVING AREA AS THAT USED FOR THE JOINTS. CONCRETE PAVING DEPTH IN 1" DEPTH BAR SIZE SHALL BE 4" ON SINGLE WAY; FOR SINGLE WAY FAST TRACK PAVING, PLACE THE LONGITUDINAL AND TRANSVERSE BARS FOR THE FAST TRACK PAVING AREA AT THE HORIZONTAL PAVEMENT ELEVATION THAT IS TWO FEET BAR DIAMETERS LOWER THAN THAT USED FOR THE ADJACENT CONCRETE PAVING DEPTH. AS SHOWN IN FIGURE 1, USE SINGLE WAY STEEL IN FAST TRACK PAVING AREAS ADJACENT TO PAVEMENT SLABS WITH SINGLE WAY REINFORCING; USE DOUBLE WAY STEEL IN FAST TRACK PAVING AREAS ADJACENT TO PAVEMENT SLABS WITH DOUBLE WAY REINFORCING.
 3. THE REQUIRED FAST TRACK PAVING AREAS SHALL BE SHOWN ON THE PLANS. THE SPACING AND THE SECTION PLATES FOR FAST TRACK PAVING SHALL BE 1' LONG. AT INTERSECTIONS AT MAJOR STREETS, AND AT DRIVEWAY HEADS, THE PAVING SHALL BE LEAVE-OUT AREAS THAT ARE NOT SHOWN ON THE PLANS, WITH REINFORCING APPROVAL FROM THE ENGINEER. TYPICAL PAVING PLANS FOR THE INTERSECTION OF A MAJOR STREET WITH THE FRONTAGE ROAD ARE SHOWN AS FIGURE 1, AND FOR THE INTERSECTION OF A MAJOR STREET OR DRIVEWAY WITH THE FRONTAGE ROAD AS FIGURE 2. FAST TRACK PAVING THE FRONTAGE ROAD FOR THE FULL FRONTAGE ROAD WIDTH AND PLACE IN STRIPS AS INDICATED.
 4. USE ADDITIONAL REINFORCING STEEL BARS (MINIMUM 42 INCHES LONG) AND SPACE THEM MIDWAY BETWEEN ALTERNATE LONGITUDINAL BARS ALONG THE INTERSECTION CONSTRUCTION JOINT FORMED AT THE FAST TRACK PAVING INTERSECTION WITH THE ADJACENT PAVEMENT SLAB (1').
 5. SPACER LENGTH IS A MINIMUM OF 33 TIMES THE NOMINAL STEEL DIAMETER.
 6. PLACE THE CONCRETE PLACEMENT AT A UNIFORM DEPTH THROUGHOUT THE FAST TRACK CONCRETE PAVING AREA.
 7. FOR CONTINUOUS SECTIONS OF ROADWAY WHERE FAST TRACK PAVING IS THE PAVEMENT TYPE, USE THE BAR SIZE AND SPACING FROM THE CRCP STANDARDS THAT CORRESPONDS TO THE FAST TRACK SLAB THICKNESS.
 8. USE LONGITUDINAL TIE-BARS OF THE SAME SIZE DIAMETER AND SPACING AS THE LONGITUDINAL BARS. A SINGLE TIE-BAR MAY BE USED IF THE 3:1 TIMES LONGER TIE-BAR PROJECTION DOES NOT INTERFERE WITH THE SAFE HANDLING OF TRAFFIC.
 9. BASE THE DEPTH OF SAW CUTS FOR SAVED JOINTS ON THE FAST TRACK CONCRETE PAVING THICKNESS.
 10. THIS STANDARD IS NOT INTENDED TO REPLACE OTHER STANDARDS EXCEPT WHERE SPECIFICALLY NOTED HEREIN. FOR PAVING DETAILS NOT SHOWN ON THIS DRAWING, REFER TO THE STANDARD SHEETS FOR CONTINUOUSLY REINFORCED CONCRETE PAVING SHOWN ELSEWHERE IN THE PLANS.

BENCHMARKS
 CIP 158-A ALUMINUM DISK STAMPED TxDOT LOCATED AT THE NORTHERLY CORNER OF THE INTERSECTION OF THE SOUTHWEST BOUND FRONTAGE ROAD OF HWY 59 AND FM 762. THE POINT IS LOCATED 4'-43 FEET NORTHWEST FROM THE EDGE OF PAVEMENT OF THE ABOVE MENTIONED FRONTAGE ROAD AND 4'-7" 80 FEET NORTHEAST OF THE NORTHEASTERLY EDGE OF PAVEMENT OF FM 762. ELEVATION = 82.53 FEET NAVD88 Geoid 762

NOTES:

RECORD DRAWING
 I HEREBY CERTIFY THAT THIS DRAWING REFLECTS THE IMPROVEMENTS CONSTRUCTED AS TO SIZE, LOCATION, AND QUANTITY AND THAT THE CONSTRUCTION WAS IN SUBSTANTIAL COMPLIANCE WITH THE CONTRACT DOCUMENTS.

CONTRACTOR: _____ DATE: _____
 TITLE: _____

DATE	REVISION	BY

FORT BEND COUNTY MUNICIPAL UTILITY DISTRICT No. 207

CIRCLE OAK DRIVEWAY PERMIT

DRIVEWAY DETAILS

LJA Engineering, Inc.
 2929 Briarpark Drive Phone 713.963.6500
 Suite 600 Fax 713.963.5026
 Houston, Texas 77042 FRN-F-1386

LJA PROJECT NO: 2198-17018

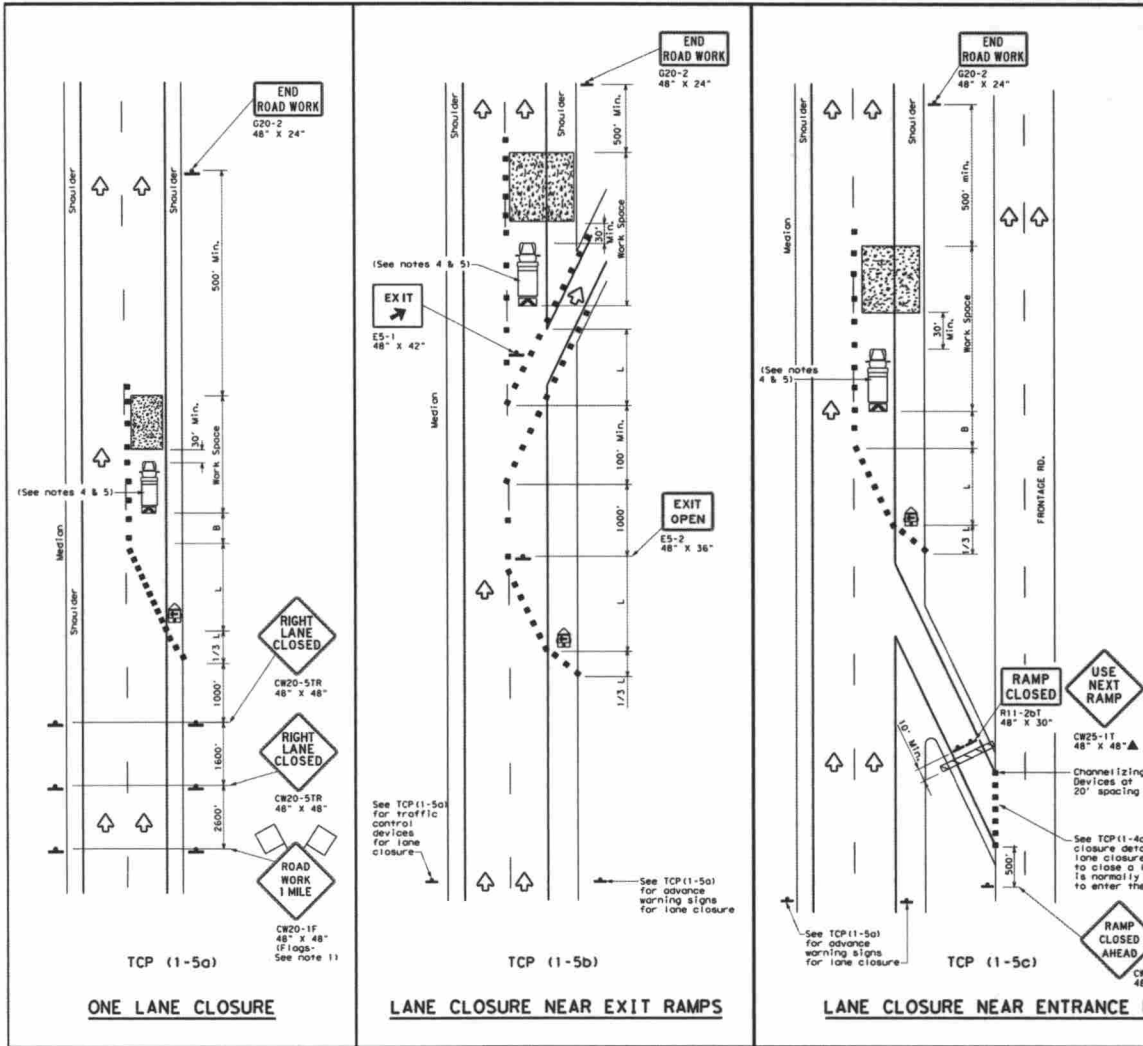
DRAWN: S.A.P.P. DESIGN: S.A.P.P. DATE: MARCH 2019

SCALE: 1" = 30'



CIRCLE OAK TxDOT DRIVEWAY PERMITS - JOB NO. 2198-17018

DATE: 1/18/2018 11:58 AM
 USER: jlp
 PROJECT: CIRCLE OAK DRIVEWAY PERMITS - JOB NO. 2198-1701B
 SHEET: 155



LEGEND

	Type 3 Barricade		Channelizing Devices
	Heavy Work Vehicle		Truck Mounted Attenuator (TMA)
	Trailer Mounted Flashing Arrow Board		Portable Changeable Message Sign (PCMS)
	Sign		Traffic Flow
	Flag		Flagger

Posted Speed #	Formula	Minimum Desirable Taper Lengths & W		Suggested Maximum Spacing of Channelizing Devices		Minimum Sign Spacing - "A"	Suggested Longitudinal Buffer Space - "B"
		On a grade	Off a grade	On a taper	On a tangent		
30	L = 4S	10'	11'	12'	30'	60'	120'
35		150'	165'	180'	35'	70'	160'
40	L = WS	205'	225'	245'	40'	80'	240'
45		265'	295'	320'	45'	90'	270'
50	L = WS	450'	495'	540'	55'	110'	500'
55		500'	550'	600'	60'	120'	600'
60	L = WS	550'	605'	660'	65'	130'	700'
65		600'	660'	720'	70'	140'	800'
70	L = WS	650'	715'	780'	75'	150'	900'
75		700'	770'	840'	75'	150'	900'

* Conventional Roads Only
 ** Taper lengths have been rounded off.
 L- Length of Taper (FT) W- Width of Offset (FT) S- Posted Speed (MPH)

TYPICAL USAGE

MOBILE	SHORT DURATION	SHORT TERM STATIONARY	INTERMEDIATE TERM STATIONARY	LONG TERM STATIONARY

- GENERAL NOTES**
- Flags attached to signs where shown, are REQUIRED.
 - All traffic control devices illustrated are REQUIRED, except those denoted with the triangle symbol may be omitted when stated elsewhere in the plans, or for routine maintenance work, when approved by the Engineer.
 - Channelizing devices used to close lanes may be supplemented with the Chevron Alignment Sign placed on every other channelizing device. Chevrons may be attached to plastic drums as per BC Standards.
 - Show vehicle with TMA and high intensity rotating, flashing, oscillating or strobe lights. A Show vehicle with a TMA should be used anytime it can be positioned 30 to 100 feet in advance of the area of crew exposure without adversely affecting the performance or quality of the work. If workers are no longer present but road or work conditions require the traffic control to remain in place, Type 3 Barricades or other channelizing devices may be substituted for the Show vehicle and TMA.
 - Additional Show vehicles with TMAs may be positioned in each closed lane, on the shoulder or off the paved surface, next to those shown in order to protect a wider work space.

For construction or maintenance contract work, specific project requirements for show vehicles can be found in the project GENERAL NOTES for Item 502, Barricades, Signs and Traffic Handling.



**TRAFFIC CONTROL PLAN
 LANE CLOSURES FOR
 DIVIDED HIGHWAYS**

TCP (1-5) - 12

REVISED	DATE	BY	JOB	DATE	BY
0101					

COUNTY: _____ SHEET NO. _____

BENCHMARK
 STA 18M - ALUMINUM DISK STAMPED TxDOT LOCATED AT THE NORTHERLY CORNER OF THE INTERSECTION OF THE SOUTHWEST BOUND FRONTAGE ROAD OF HWY 59 AND FM 782. THE POINT IS LOCATED +/- 33 FEET NORTHWEST FROM THE EDGE OF PAVEMENT OF THE ABOVE MENTIONED FRONTAGE ROAD AND +/- 80 FEET NORTHEAST OF THE NORTHEASTERLY EDGE OF PAVEMENT OF FM 782. ELEVATION = 83.53 FEET NAVD83 Geoid 782

RECORD DRAWING
 I HEREBY CERTIFY THAT THIS DRAWING REFLECTS THE IMPROVEMENTS CONSTRUCTED AS TO SIZE, LOCATION, AND CRISIS AND THAT THE CONSTRUCTION WAS IN SUBSTANTIAL COMPLIANCE WITH THE CONTRACT DOCUMENTS.

CONTRACTOR: _____ DATE: _____

TITLE: _____

DATE: _____ REVISION: _____ BY: _____

FORT BEND COUNTY MUNICIPAL UTILITY DISTRICT No. 207

CIRCLE OAK DRIVEWAY PERMIT

LANE CLOSURE DETAILS SHEET

LJA Engineering, Inc.
 2329 Briarbank Drive
 Suite 600
 Houston, Texas 77042
 Phone: 713.963.8000
 Fax: 713.963.9226
 FRN - F-1386

LJA PROJECT NO.: 2198-1701B

DRAWN: S.J.J.P. DESIGN: S.J.J.P. DATE: MARCH 2018

SCALE: AS SHOWN

SHEET NO. 05 OF 06



CIRCLE OAK DRIVEWAY PERMITS - JOB NO. 2198-1701B

