

THE STATE OF TEXAS §
 §
 COUNTY OF FORT BEND §

ORDER OF EXCLUSION AND DISANNEXATION

RECITALS

WHEREAS a certain 9.9225 acre tract of land located along FM 359 near Rogers Road in Fort Bend County, Texas, identified under Fort Bend Central Appraisal District Account Number 0029-00-000-1070-901 (the "Rogers Road Property"), and shown in Exhibit A, attached hereto and incorporated herein for all purposes, is currently located within the original boundaries of Fort Bend County Assistance District No. 7 ("CAD No. 7"); and

WHEREAS, the Board of Directors of CAD No. 7 desires to exclude the Rogers Road Property so as to be situated outside of the boundaries of CAD No. 7 and not included within the boundaries of CAD No. 7; and

WHEREAS, Section 387.003(j) of the Texas Local Government Code permits a commissioners court by order, to exclude an area from the district if the district has no outstanding bonds payable wholly or partly from sales and use taxes and the exclusion of the land does not impair any outstanding district debt or contractual obligation; and

WHEREAS, the Board of Directors of CAD No. 7 finds that there are no outstanding bonds payable wholly or partly from sales and use taxes and the exclusion of the Rogers Road Property does not impair any outstanding CAD No. 7 debt or contractual obligation; and

BE IT ORDERED BY THE COMMISSIONERS COURT SITTING AS THE BOARD OF DIRECTORS OF CAD NO. 7 THAT:

Section 1: The matters and facts set out in the preamble of this order are hereby found and declared to be true and complete and are incorporated herein.

Section 2: The Rogers Road Property is hereby excluded from the boundaries of CAD No. 7 by disannexation.

Section 3: This Order is effective immediately upon passage.

ADOPTED this 8th day of October, 2019.

**FORT BEND COUNTY ASSISTANCE
DISTRICT NO. 7**

By: KP George
KP George, County Judge

Date: 10.8.2019

ATTEST:

By: Laura Richard
Laura Richard, County Clerk

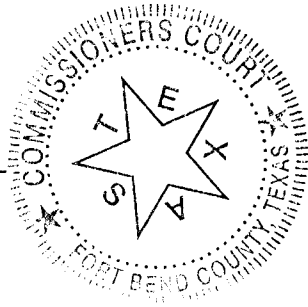
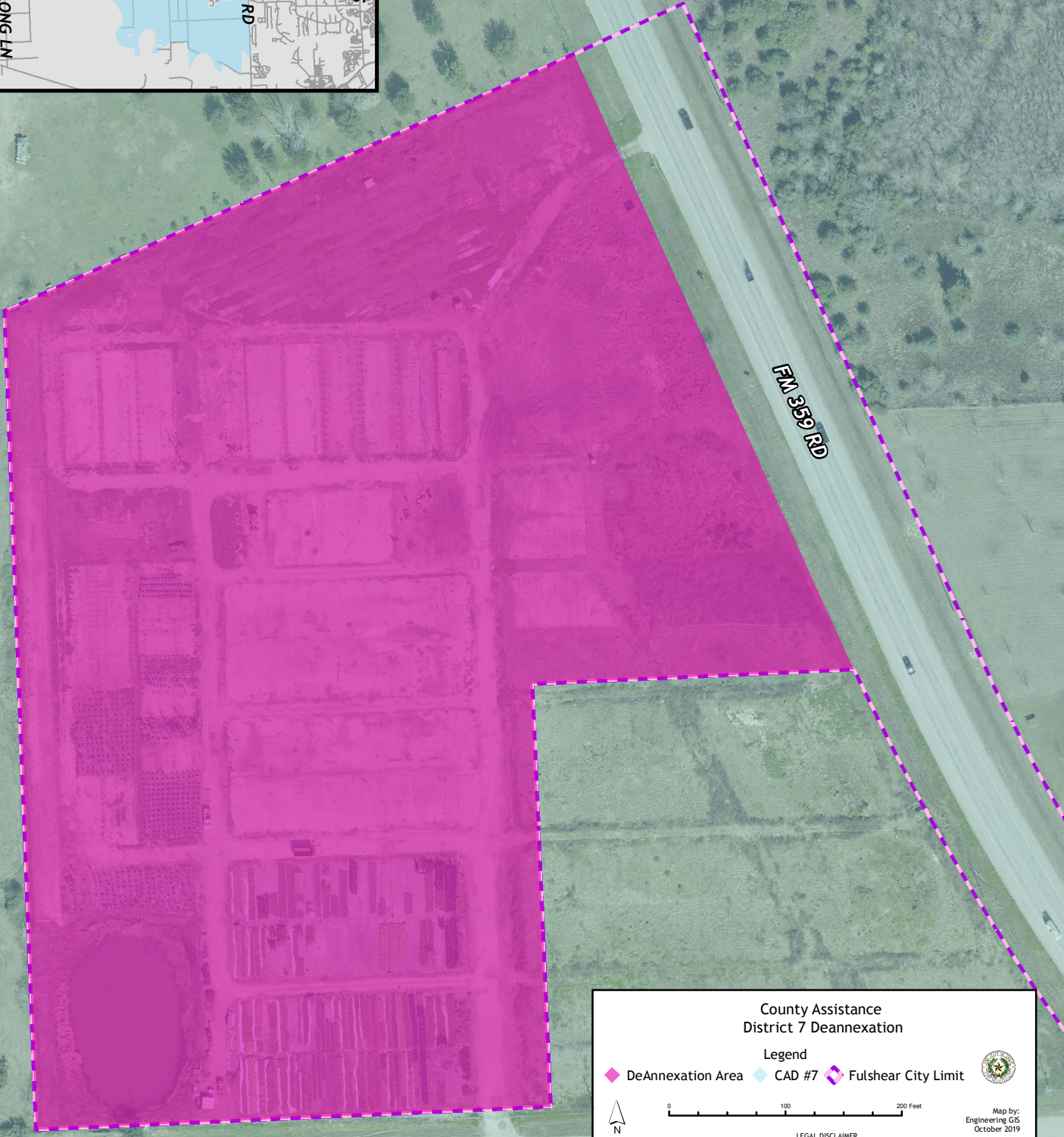
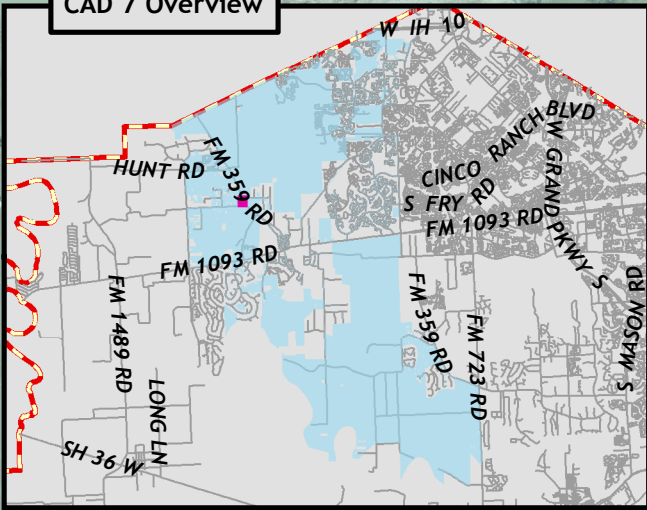


EXHIBIT A

CAD 7 Overview



County Assistance
District 7 Deannexation

Legend

- ◆ DeAnnexation Area
- ◆ CAD #7
- ◆ Fulshear City Limit



LEGAL DISCLAIMER

Map by:
Engineering GIS
October 2019

This Geographic Information Systems (GIS) Data is a public resource of general information. The information contained was generated from GIS data maintained by Fort Bend County and different sources and agencies. The County of Fort Bend makes no warranty, representation, or guarantee as to the content, sequence, accuracy, timeliness, or completeness of any of the spatial data or database information provided herein. The County of Fort Bend shall assume no liability for any errors, omissions, or inaccuracies in the information provided, regardless of how caused, or any decision made or action taken or not taken by any person relying on any information or data furnished within. If any errors are detected, please contact the GIS Division of Fort Bend County Engineering so those errors may be corrected.