



**REVIEW BY FORT BEND COUNTY  
COMMISSIONERS COURT**

**Fort Bend County  
Engineering Department**  
301 Jackson Suite 401  
Richmond, Texas 77469  
281.633.7500  
Permits@fortbendcountytexas.gov



Right of Way Permit



Commercial Driveway Permit

Permit No: 2018-23058

**Applicant:** MCI Metro Access Transmission Services, Corp./Golden Field Services

**Job Location Site:** S. University Boulevard, Sugar Land, TX 77479

**Bond No.**                      **Date of Bond:** 5/1/2017 **Amount:** \$50,000.00

The above applicant came to make use of certain Fort Bend County property subject to, "The Order Regulating the Laying, Construction, Maintenance, and Repair of Buried Cables, Conduits, and Pole Lines, In, Under, Across or Along Roads, Streets, Highways, and Drainage Ditches in Fort Bend County, Texas, Under the Jurisdiction of the Commissioners Court of Fort Bend County, Texas," as passed by the Commissioners Court of Fort Bend County, Texas, of the Minutes of the Commissioners Court of Fort Bend County, Texas, to the extent that such order is not inconsistent with Chapter 181, Vernon's Texas Statutes and Codes Annotated.

**Notes:**

1. Evidence of review by the Commissioners Court must be kept on the job site and failure to do so constitutes grounds for job shutdown.
2. Written notices are required:
  - a. 48 hours in advance of construction start up, and
  - b. When construction is completed and ready for final inspection, submit notification to Permit Administrator thru MyGovernmentOnline.org portal.
3. This permit expires one (1) year from date of permit if construction has not commenced.
4. This permit applies to work performed within right-of-ways owned and maintained by Fort Bend County only, and it is the responsibility of the applicant to acquire all other necessary permits.

On this 6th day of November, 2018, Upon Motion of Commissioner Mayer, seconded by Commissioner Paterson, duly put and carried, it is ORDERED, ADJUDGED AND DECREED that said notice of said above purpose is hereby acknowledged by the Commissioners Court of Fort Bend County, Texas, and that said notice be placed on record according to the regulation order thereof.

**Signature**

By:

Sean Eglinton  
County Engineer

Presented to Commissioners Court and approved.

Date Recorded 11-13-2018 Comm. Court No. 12L

N/A

By:

Drainage District Engineer/Manager

Clerk of Commissioners Court

By:

Ronda Wilkes  
Deputy



**PERMIT APPLICATION REVIEW FORM FOR  
CABLE, CONDUIT, AND POLE LINE ACTIVITY  
IN FORT BEND COUNTY**

**Fort Bend County  
Engineering Department**  
301 Jackson Suite 401  
Richmond, Texas 77469  
281.633.7500  
Permits@fortbendcountytexas.gov

- ☒ Right of Way Permit  
☐ Commercial Driveway Permit

Permit No: 2018-23058

The following "Notice of Proposed Cable, Conduit, and/or Pole Line activity in Fort Bend County" and accompanying attachments have been reviewed and the notice conforms to appropriate regulations set by Commissioner's Court of Fort Bend County, Texas.

**(1) COMPLETE APPLICATION FORM:**

- ☒ a. Name of road, street, and/or drainage ditch affected.  
☒ b. Vicinity map showing course of directions  
☒ c. Plans and specifications

**(2) BOND:**

- ☐ County Attorney, approval when applicable.
- ☒ Perpetual bond currently posted.      Bond No: [REDACTED]      Amount: \$50,000.00
- ☐ Performance bond submitted.      Bond No: \_\_\_\_\_      Amount: \_\_\_\_\_
- ☐ Cashier's Check      Check No: \_\_\_\_\_      Amount: \_\_\_\_\_

**(3) DRAINAGE DISTRICT APPROVAL (WHEN APPLICABLE):**

\_\_\_\_\_  
Drainage District Approval

\_\_\_\_\_  
Date

**We have reviewed this project and agree it meets minimum requirements.**

  
\_\_\_\_\_  
Permit Administrator

10/29/2018

\_\_\_\_\_  
Date

MCImetro  
ACCESS TRANSMISSION SERVICES CORPORATION

OUTSIDE PLANT CONSTRUCTION  
FIBER OPTIC CABLE ROUTE

ECC FIBER BUILD: 1706ANAY.003  
MISSOURI CITY TO CABRERA RD  
HOUSTON, TX

SITE CODE: HODATX

PROJECT STATUS: CONSTRUCTION

DATE: 8/21/18

FILE: ECC-FBRBLD01002AC.LIN



## GENERAL NOTES / CLARIFICATION NOTES

## GENERAL NOTES

1. VERIZON BUSINESS COMPRISES THE FOLLOWING OPERATING ENTITIES:

- MCI COMMUNICATIONS SERVICES, INC.
- MCI METRO COMMUNICATIONS SERVICES, INC.
- MCI METRO ACCESS TRANSMISSION SERVICES OF VIRGINIA, INC.
- MCI METRO ACCESS TRANSMISSION SERVICES OF MASSACHUSETTS, INC.
- METROPOLITAN FIBER SYSTEMS OF NEW YORK, INC.

2. ALL WORK TO BE PERFORMED IN STRICT ACCORDANCE WITH THE APPLICABLE CODES OR REQUIREMENTS OF ANY REGULATING GOVERNMENTAL AGENCY, VERIZON BUSINESS AND THE RIGHT-OF-WAY GRANTOR.

3. LOCATIONS OF SOME OF THE PHYSICAL FEATURES WERE OBTAINED FROM DATED RAILROAD EVALUATION MAPS OR OTHER DRAWINGS AND MAY NOT BE AS SHOWN OR DEPICTED ON THESE DRAWINGS.
4. UNDERGROUND UTILITIES HAVE BEEN PLOTTED FROM AVAILABLE RECORDS AND FIELD OBSERVATIONS BUT ARE NOT NECESSARILY EXACT. THEREFORE, UTILITY LOCATIONS WILL BE VERIFIED AT LEAST 100 FEET IN ADVANCE OF TRENCHING OR PLOWING, SO THAT CHANGES IN CABLE PLACEMENT CAN BE MADE IN THE EVENT OF CONFLICT.
5. ALL KNOWN BURIED OBSTRUCTIONS ARE SHOWN ON THE CONSTRUCTION DRAWINGS. ANY AND ALL OTHERS ENCOUNTERED ARE ALSO THE RESPONSIBILITY OF THE CONTRACTOR TO LOCATE, PROTECT AND REPAIR IF DAMAGED.
6. ANY AND ALL IMPROVEMENTS, SUCH AS ASPHALT OR CONCRETE PAVEMENT, CURBS, GUTTERS, WALKS, DRAINAGE DITCHES, EMBANKMENTS, SHRUBS, TREES, GRASS SOD, ETC., IF DAMAGED, SHALL BE RESTORED TO ORIGINAL CONDITION.
7. EQUIPMENT TYPES SPECIFIED HEREIN (IE: "BACKHOE", SWAMP PLOW" ETC.) ARE SUGGESTIONS ONLY AND ARE NOT INTENDED AS REQUIREMENTS. CONTRACTOR WILL BE NOTIFIED AS TO EXPECTATIONS.
8. SHORING OF BORE PITS AND TRENCHES IN ACCORDANCE WITH OSHA REGULATIONS IS MANDATORY.
9. BURIED CABLE MARKERS WILL BE PLACED AT ALL UNDERGROUND UTILITY LOCATIONS AND ALL OTHER LOCATIONS IN ACCORDANCE WITH THE CONSTRUCTION DRAWINGS AND THE OUTSIDE PLANT HANDBOOK.
10. ALL 4" ID CONDUIT WILL BE SCHEDULE 40 (EG.: PVC OR GSP/BSP), OR AS SPECIFIED.
11. UNDERGROUND CONDUIT WILL BE PLACED AT 48" MINIMUM COVER UNLESS OTHERWISE SPECIFIED ON THE CONSTRUCTION DRAWINGS.

## CLARIFICATION NOTES

1. STATION
2. LOCATION
3. CLARIFICATION NO. AND MINIMUM COVER
4. QUANTITY LINEAR FOOTAGE/SQUARE FOOTAGE, SIZE OF MANHOLE/HANDHOLE SIZE OF PULL/SPLICE BOX, DIMENSION OF WALL, HEIGHT/CLASS/TYPE OF POLE
5. TYPICAL DRAWING NO. AND TYPICAL DETAIL DRAWING NUMBER
6. PLANT ACCOUNTING CODE
7. SPECIFIED CONDUIT, HANDHOLE/MANHOLE NO., SPECIFIED PURPOSE AND MATERIAL, BRIDGE NO. AND RAILROAD STATION, MATERIAL, POLE NO.

## ADDENDUM NOTES

## CLARIFICATION NOTES (CONTINUED)

100	110	JACK AND DRY BORE CONDUIT(S)
200	210	PLACE CONDUIT
	212	PLACE HIGH DENSITY POLYETHYLENE (HDPE)
	213	ROCK ADDER
	214	SLURRY BACKFILL ADDER
	215	EXPOSE CONDUIT
	216	EXPOSE CONDUIT AND RELOCATE
	217	EXPOSE CONDUIT AND REPLACE/SUBSTITUTE
	218	EXPOSE AND REMOVE CONDUIT
	219	EXPOSE AND REMOVE CONDUIT (ABANDONED)
	220	CONCRETE ENCASE
	221	REMOVE CONCRETE ENCASMENT
	222	REMOVE CONCRETE CAP
	240	PLACE HANDHOLE
	244	REMOVE EXISTING HANDHOLE
	245	RELOCATE HANHOLE
	246	REPLACE/SUBSTITUTE HANDHOLE
	247	EXCAVATE SPLICE PIT
	250	PLACE MANHOLE
	252	REMOVE EXISTING MANHOLE
	255	RELOCATE PRECAST MANHOLE
256	REPLACE/SUBSTITUTE PRECAST MANHOLE	
180	CONSTRUCT WALL	
270	REMOVE AND RESTORE ASPHALT	
280	REMOVE AND RESTORE CONCRETE	
281	REMOVE AND RESTORE SIDEWALK	
282	REMOVE AND RESTORE CURBING	
300	310	ATTACH CONDUIT TO WALL OR STRUCTURE
	315	DETACH CONDUIT FROM WALL OR STRUCTURE
	320	CORE BORE
	330	ATTACH PULL/SPLICE BOX TO WALL OR STRUCTURE
400	410	PULL CABLE
	411	PULL THROUGH DUCT (INNERDUCT)
	415	REMOVE CABLE FROM CONDUIT
	420	REPOSITION ACTIVE CABLE SLACK
500	510	DIRECT BURY CABLE
	515	EXPOSE DIRECT BURIED CABLE
	516	EXPOSE DIRECT BURIED CABLE AND RELOCATE
	517	REMOVE AND DISPOSE OF CABLE
	520	PLACE AERIAL CABLE
	525	RELOCATE AERIAL CABLE
	518	DELASH AERIAL CABLE
	527	RELASH AERIAL CABLE
	528	REMOVE AERIAL CABLE
	530	PLACE POLE/PUSH BRACE
535	REMOVE POLE/PUSH BRACE	
600	610	JETTING CONDUIT
	620	EMBEDMENT FLOW
	630	DIRECTIONAL BORE
700	710	PLACE BURIED CABLE MARKERS AND SIGNS/MWCO
		WATER CROSSING SIGNS
	711	PLACE ISOLATOR/PROTECTION SYSTEM AT EXISTING
	713	HANDHOLES/MANHOLES
	712	REMOVE BURIED CABLE MARKER POST/HARDWARE
714	REMOVE CONCRETE BURIED CABLE MARKER POST	



PROJECT: 1706ANAY.003

HOUSTON, TX

MISSOURI CITY TO CABRERA RD

[illegible]

MCImetro  
ACCESS TRANSMISSION SERVICES  
CORPORATION

OUTSIDE PLANT CONSTRUCTION

TITLE: FIBER OPTIC ROUTE  
MISSOURI CITY TO CABRERA RD  
HOUSTON, TX

DATE: 8/21/18

ENGINEER: L. STALCUP

DRAWN BY: G.F.S. (JCV)

## REVISIONS

[illegible]

EXCEPT AS MAY BE OTHERWISE PROVIDED BY CONTRACT, THESE DRAWINGS AND SPECIFICATIONS SHALL REMAIN THE PROPERTY OF MCI COMMUNICATIONS SERVICES INC. BOTH BEING ISSUED IN STRICT CONFIDENCE AND SHALL NOT BE REPRODUCED, COPIED, OR USED FOR ANY PURPOSE WITHOUT SPECIFIC WRITTEN PERMISSION.

## SCALE

HORIZONTAL: 1"= N/A

VERTICAL: 1"= N/A

MP	TO MP
----	-------

SHEET	04	OF	18
-------	----	----	----

FILE: ECC-FBRBLD01004AC.LIN

## MCI OUTSIDE PLANT FOCUS

# FIBER OPTIC CABLE UNCOVERING SYSTEM

1. THE TITLE OF THIS PROGRAM, F.O.C.U.S., AN ACRONYM FOR "FIBER OPTIC CABLE UNCOVERING SYSTEM," WAS SELECTED TO REMIND EVERYONE INVOLVED WITH WORKING NEAR MCI'S ACTIVE FIBER OPTIC SYSTEMS TO FOCUS ON PROTECTING THE FACILITIES. IF, DURING THE COURSE OF THE PROJECT, YOU NOTICE ANY ACTIVITY WHICH MAY JEOPARDIZE THE MCI OSP FACILITIES, IT IS YOUR DUTY TO STOP THE WORK AND RE-F.O.C.U.S.
2. F.O.C.U.S. RULES MUST BE FOLLOWED ON ALL MCI PROJECTS INVOLVING WORK ON OR NEAR MCI OSP FACILITIES. SAFETY IS MCI'S NUMBER ONE PRIORITY; EVERYONE MUST REFRAIN FROM UNSAFE AND IMPROPER PRACTICES.
3. REVIEW OF F.O.C.U.S. IS MANDATORY AT EVERY PRE-BID, PRE-CONSTRUCTION SITE MEETING AND DAILY TAILGATE MEETING. F.O.C.U.S. DISCUSSION MUST INCLUDE SITE-SPECIFIC HISTORY, UNIQUE PROBLEMS, FACILITY CONFIGURATIONS THAT MAY BE ENCOUNTERED, AND PAST ERRORS. "THOSE WHO DO NOT LEARN FROM HISTORY ARE DOOMED TO REPEAT IT." DO NOT LET THIS HAPPEN TO YOU.
4. ANY WORK NEAR OR REQUIRING HANDLING OF MCI OUTSIDE PLANT FACILITIES CAN ONLY BE PERFORMED WITH AN MCI EMPLOYEE OR CONTRACT REPRESENTATIVE PRESENT -- THIS MEANS OUT OF HIS OR HER VEHICLE AND DIRECTLY MONITORING THE WORK. THE REPRESENTATIVE MUST HAVE A PROPERLY OPERATING CABLE LOCATOR CHECKED FOR ACCURACY EVERY DAY PRIOR TO COMMENCEMENT OF WORK (COMPARISON OF LINE AND DEPTH READINGS TO ACTUAL LINE AND DEPTH OF THE CABLE).
5. LOCATE AND POT HOLE REQUIREMENTS:
  - PRIOR TO ANY EXCAVATION, THE MCI EMPLOYEE OR CONTRACT REPRESENTATIVE MUST VERIFY THE INITIAL LOCATE MARKS COMPLETED BY MCI OPERATIONS. DO NOT TRUST LOCATE RESULTS COMPLETED BY OTHERS THE MCI OR CONTRACT REPRESENTATIVE MUST LOCATE THE CABLE RUNNING LINE BY MAKING AT LEAST ONE PASS IN EACH DIRECTION. LOCATE RESULTS MUST THEN BE COMPARED WITH PREVIOUS MARKS AND THE AS-BUILTS.
  - IF THE PROPOSED WORK INVOLVES DIGGING OR EXCAVATING WITHIN 3 FEET OF THE CABLE, THE CABLE ROUTE WILL BE MARKED CONTINUALLY WITH ORANGE PAINT AND SUPPLEMENTED BY MARKER FLAGS PLACED EVERY 10 FT. THE EXCAVATION CONTRACTOR MUST POT HOLE (ALL POT HOLES MUST BE COMPLETED BY HAND DIGGING OR VACUUM EXCAVATION) A MINIMUM OF EVERY 15 FT., THEN EXPOSE THE ENTIRE LENGTH OF THE CABLE BY HAND DIGGING OR VACUUM EXCAVATION.
  - IF THE PROPOSED WORK INVOLVES DIGGING OR EXCAVATING WITHIN 5 FEET (BUT NOT CLOSER THAN 3 FEET) OF THE CABLE, THE CABLE ROUTE WILL BE MARKED CONTINUALLY WITH ORANGE PAINT AND SUPPLEMENTED BY MARKER FLAGS PLACED EVERY 10 FT. THE EXCAVATION CONTRACTOR MUST POT HOLE THE CABLE A MINIMUM OF EVERY 15 FT.
  - IF THE PROPOSED WORK INVOLVES DIGGING OR EXCAVATING WITHIN 5 FEET (BUT NOT CLOSER THAN 3 FEET) OF THE CABLE, THE CABLE ROUTE WILL BE MARKED CONTINUALLY WITH ORANGE PAINT AND SUPPLEMENTED BY MARKER FLAGS PLACED EVERY 10 FT. THE EXCAVATION CONTRACTOR MUST POT HOLE THE CABLE A MINIMUM OF EVERY 15 FT.
  - THE CABLE WILL ALSO BE POT HOLED AT ANY CHANGE IN THE RUNNING LINE OF MORE THAN 1 FT. IN ANY DIRECTION, ANYTIME THE ACCURACY OF THE ELECTRONIC LOCATE IS QUESTIONED, OR THE MARKED RUNNING LINE DOES NOT MATCH THE AS-BUILTS.
6. EXPOSING REQUIREMENTS:
  - NO MECHANICAL EXCAVATION WITHIN 3 FT. OF OSP FACILITIES WILL BE ALLOWED UNLESS THE FACILITIES HAVE FIRST BEEN PROPERLY LOCATED, POT HOLED, POSITIVELY IDENTIFIED, CONTINUOUSLY EXPOSED BY HAND DIGGING OR VACUUM EXCAVATION, AND THE FACILITIES ARE CLEARLY VISIBLE.
  - IN ADDITION, MECHANICAL EXCAVATION WITHIN 3 FT. OF OSP FACILITIES REQUIRES ON-SITE PRIOR APPROVAL FROM MCI'S EMPLOYEE OR CONTRACT REPRESENTATIVE.
7. PLEASE REFER TO THE LATEST EDITION OF THE MCI OSP HANDBOOK FOR ADDITIONAL DETAILS. KNOW IT AND FOLLOW IT.

## MCI OUTSIDE PLANT CONSTRUCTION GENERAL REQUIREMENTS

- ALL FEDERAL, STATE AND LOCAL SAFETY REGULATIONS MUST BE FOLLOWED WITHOUT EXCEPTION.
- PERSONAL PROTECTIVE EQUIPMENT APPROPRIATE FOR THE SPECIFIC WORK SITE SHALL BE USED AT ALL TIMES. AT A MINIMUM, HARD HAT, SAFETY SHOES/STEEL-TOED BOOTS, AND FLORESCENT ORANGE OR GREEN WORK VEST ARE REQUIRED UPON ENTERING ANY MCI WORK SITE.
- USE OF INTOXICANTS, DRUGS, INHALANTS OR ANY OTHER SUBSTANCES THAT MAY IMPAIR ALERTNESS ARE STRICTLY PROHIBITED.
- CONTRACTORS ARE NOT ALLOWED TO CUT ANY CABLE. CABLES SCHEDULED FOR REMOVAL WILL BE CUT BY MCI OPERATIONS PERSONNEL, AND ONLY AFTER VERIFICATION THAT ALL TRAFFIC HAS BEEN OFF-LOADED.
- EXTREME CAUTION MUST BE USED AT ALL TIMES WHEN WORKING ON OR NEAR ACTIVE CABLES. AN MCI EMPLOYEE OR CONTRACT REPRESENTATIVE MUST APPROVE AND BE PRESENT PRIOR TO AND DURING ALL CABLE HANDLING ACTIVITIES.
- TOOLS AND EQUIPMENT SPECIFICALLY DESIGNED FOR THE JOB AT HAND ARE REQUIRED. USE THE PROPER TOOL FOR THE JOB.
- CONDUIT WORK INVOLVING ACTIVE CABLES REQUIRES SPECIALIZED TOOLS SPECIFICALLY DESIGNED TO ACCESS DUCTS WITH ACTIVE CABLES.
- PROTECTING MCI FACILITIES IS EXTREMELY IMPORTANT; HOWEVER, SAFETY REGARDING YOURSELF AND OTHERS IS THE MOST IMPORTANT PART OF ANY PROJECT.



PROJECT: 1706ANAY.003

HOUSTON, TX

MISSOURI CITY TO CABRERA RD

[illegible]

MCImetro  
ACCESS TRANSMISSION SERVICES  
CORPORATION

## OUTSIDE PLANT CONSTRUCTION

TITLE: FIBER OPTIC ROUTE  
MISSOURI CITY TO CABRERA RD  
HOUSTON, TX

DATE: 8/21/18

ENGINEER: L. STALCUP

DRAWN BY: G.F.S. (JCV)

## REVISIONS

[illegible]

EXCEPT AS MAY BE OTHERWISE PROVIDED BY CONTRACT, THESE DRAWINGS AND SPECIFICATIONS SHALL REMAIN THE PROPERTY OF MCI COMMUNICATIONS SERVICES INC. BOTH BEING ISSUED IN STRICT CONFIDENCE AND SHALL NOT BE REPRODUCED, COPIED, OR USED FOR ANY PURPOSE WITHOUT SPECIFIC WRITTEN PERMISSION.

## SCALE

HORIZONTAL: 1"= N/A

VERTICAL: 1"= N/A

MP	TO MP
----	-------

SHEET	4A	OF	18
-------	----	----	----

FILE: ECC-FBRBLD01004BC.LIN

## CLARIFICATION SUMMARY SHEET PROJECT SPECIFIC

PROJECT: 1706ANAY.003

HOUSTON, TX

MISSOURI CITY TO CABRERA RD

[illegible]

PROJECT CLARIFICATION SUMMARY		
DESCRIPTION	QUANTITY	UNIT
PLACE (24"x36"x24") HANDHOLE	12	EA
PLACE 1-2" HDPE (SDR 11) CONDUIT	4,056	LF
PULL 1-144F CABLE ( <b>4,056' IN NEW CONDUIT, 130' IN EXISTING, 50' IN RISERS &amp; 1080' IN COILS</b> )	5,266	LF
ATTACH (25') 2" U-GUARD RISER	2	EA
(PLACE) DOWN GUY & ANCHOR	4	EA
PLACE 1-6M AERIAL STRAND ( <b>INCLUDES ALL HARDWARE, LOOP EQUIPMENT, &amp; 100' IN GUYS</b> )	1,863	LF
LASH 1-144F CABLE ( <b>100' CABLE IN SLACK LOOPS</b> )	1,863	LF
PLACE (BURIED CABLE) MARKER	6	EA

MCImetro  
ACCESS TRANSMISSION SERVICES  
CORPORATION

## OUTSIDE PLANT CONSTRUCTION

TITLE: FIBER OPTIC ROUTE  
MISSOURI CITY TO CABRERA RD  
HOUSTON, TX

DATE: 8/21/18

ENGINEER: L. STALCUP

DRAWN BY: G.F.S. (JCV)

## REVISIONS

[illegible]

EXCEPT AS MAY BE OTHERWISE PROVIDED BY CONTRACT, THESE DRAWINGS AND SPECIFICATIONS SHALL REMAIN THE PROPERTY OF MCI COMMUNICATIONS SERVICES INC. BOTH BEING ISSUED IN STRICT CONFIDENCE AND SHALL NOT BE REPRODUCED, COPIED, OR USED FOR ANY PURPOSE WITHOUT SPECIFIC WRITTEN PERMISSION.

## SCALE

HORIZONTAL: 1"= N/A

VERTICAL: 1"= N/A

MP	TO MP
----	-------

SHEET 4B OF 18

FILE: ECC-FBRBLD01004BC.LIN



SYMBOLS KEY

	EXISTING	PROPOSED
DIRECT BURIED CABLE		
AERIAL CABLE		
SUBMARINE CABLE		
FOGWIRE CABLE		
DIRECT BURIED HDPE		
PVC OR SPLIT PVC CONDUIT		
BSP/GSP OR SPLIT BSP/GSP CONDUIT		
STEEL CASING		
REMOVE AND RESTORE ASPHALT OR CONCRETE (WIDTH AS INDICATED)		
CORE BORE		
JACK AND BORE		
DIRECTIONAL BORE (& PLACE CONDUIT)		
FUTURE CABLE		
REMOVE CABLE		
TO BE REMOVED OR ABANDONED (SHOWN FOR HDPE)		
AERIAL UTILITY (ELECTRIC)		
UNDERGROUND UTILITY (TELEPHONE)		
MAIN TRACKS		
AUXILLARY TRACKS		
CENTERLINE		
RIGHT-OF-WAY		
EDGE OF ROADWAY (GENERIC)		
EDGE OF PAVEMENT		
BACK OF CURB		
DITCH LINE		
TAX, CITY, COUNTY, OR STATE BOUNDARY LINE		
PROPERTY LINE		
FENCE LINE		
GUARDRAIL		
TOP OF SLOPE		
TOE OF SLOPE		

STEEL MARKER AND SIGN-(A)  
ALUMINUM "HUB"-STYLE MARKER-(B)  
FLAT MARKER-(C)  
TUBULAR MARKER-(D)  
TUBULAR MARKER, & ISOLATOR PROTECTOR-(E)

MILE POST MARKER  
NOTE:  
DASHED = NOT FOUND IN FIELD

PERMIT TRACKING FORM IDENTIFIER

ROCK PROBE (DEPTH AS INDICATED)

UTILITY COVER DEPTH

HANDHOLE, MANHOLE OR PULLBOX

POLE

ANCHOR ONLY

GUY ONLY

OVERHEAD GUY (ARROW IN DIRECTION OF PULL)

ANCHOR AND GUY

SIDEWALK ANCHOR AND GUY

FOREIGN ANCHOR AND GUY

PUSH BRACE (EXISTING POLE)

ACCOUNT CODE CHANGE (BURIED TO AERIAL)

RISER ATTACHMENT LOCATION

BOND AND GROUND

CULVERT (SIZE AS INDICATED)

BRIDGE

WATER METER

GAS VALVE

FIRE HYDRANT

RAILROAD SIGNAL CONTROL BOX

CAUTION NOTE

EXISTING	PROPOSED



PROJECT: 1706ANAY.003

HOUSTON, TX

MISSOURI CITY TO CABRERA RD

McImetro  
ACCESS TRANSMISSION SERVICES  
CORPORATION

OUTSIDE PLANT CONSTRUCTION

TITLE: FIBER OPTIC ROUTE  
MISSOURI CITY TO CABRERA RD  
HOUSTON, TX

DATE: 8/21/18

ENGINEER: L. STALCUP

DRAWN BY: G.F.S. (JCV)

REVISIONS			
No.	DATE	DESCRIPTION	BY

EXCEPT AS MAY BE OTHERWISE PROVIDED BY CONTRACT, THESE DRAWINGS AND SPECIFICATIONS SHALL REMAIN THE PROPERTY OF MCI COMMUNICATIONS SERVICES INC. BOTH BEING ISSUED IN STRICT CONFIDENCE AND SHALL NOT BE REPRODUCED, COPIED, OR USED FOR ANY PURPOSE WITHOUT SPECIFIC WRITTEN PERMISSION.

SCALE

HORIZONTAL: 1"= N/A

VERTICAL: 1"= N/A

MP \_\_\_\_\_ TO MP \_\_\_\_\_

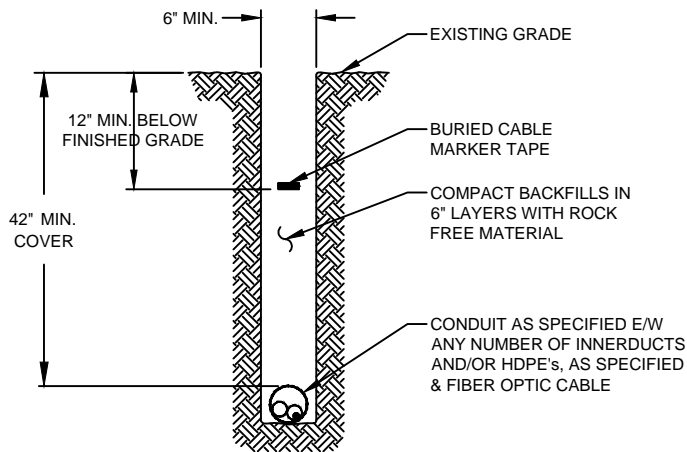
SHEET 05 OF 18

FILE: ECC-FBRBLD01005AC.LIN

CONSTRUCTION DETAILS

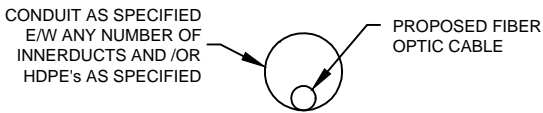
TYPICAL DETAIL "A"

TRENCH & PLACE CONDUIT



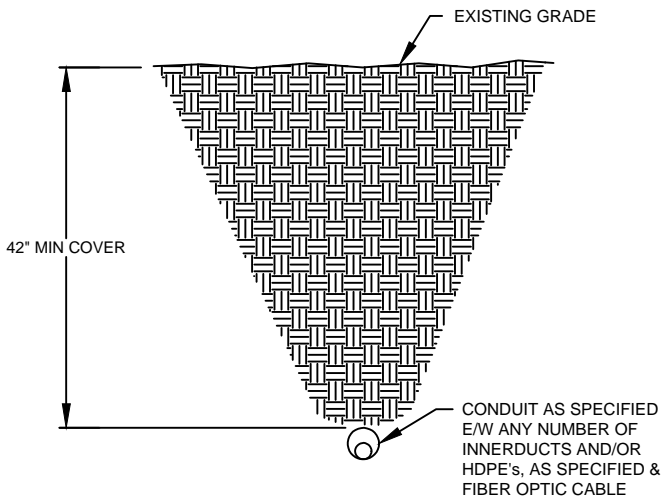
TYPICAL DETAIL "B"

CROSS SECTION OF PROPOSED HDPE



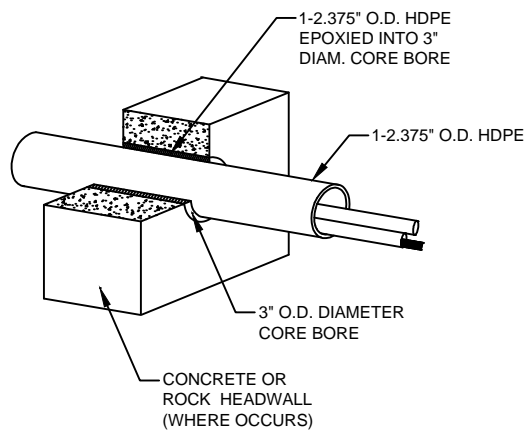
TYPICAL DETAIL "C"

DIRECTIONAL BORE CROSS SECTION FOR CONDUIT



TYPICAL DETAIL "D"

3" CORE BORE



NOTE:

EPOXY GROUT IS USED AT BOTH ENDS OF CORE BORE TO SEAL GAP BETWEEN 2.375" CONDUIT AND PVC SLEEVE.



PROJECT: 1706ANAY.003

HOUSTON, TX

MISSOURI CITY TO CABRERA RD

McImetro  
ACCESS TRANSMISSION SERVICES  
CORPORATION

OUTSIDE PLANT CONSTRUCTION

TITLE: FIBER OPTIC ROUTE  
MISSOURI CITY TO CABRERA RD  
HOUSTON, TX

DATE: 8/21/18

ENGINEER: L. STALCUP

DRAWN BY: G.F.S. (JCV)

REVISIONS			
No.	DATE	DESCRIPTION	BY

EXCEPT AS MAY BE OTHERWISE PROVIDED BY CONTRACT, THESE DRAWINGS AND SPECIFICATIONS SHALL REMAIN THE PROPERTY OF MCI COMMUNICATIONS SERVICES INC. BOTH BEING ISSUED IN STRICT CONFIDENCE AND SHALL NOT BE REPRODUCED, COPIED, OR USED FOR ANY PURPOSE WITHOUT SPECIFIC WRITTEN PERMISSION.

SCALE

HORIZONTAL: 1"= N/A

VERTICAL: 1"= N/A

MP TO MP

SHEET 06 OF 18

FILE: ECC-FBRBLD01006AC.LIN

## TYPICAL CROSSING PROFILE DETAILS: UNDERGROUND



PROJECT: 1706ANAY.003

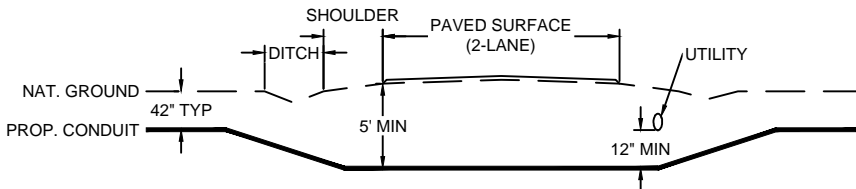
HOUSTON, TX

MISSOURI CITY TO CABRERA RD

TYPICAL DETAIL "A"

---

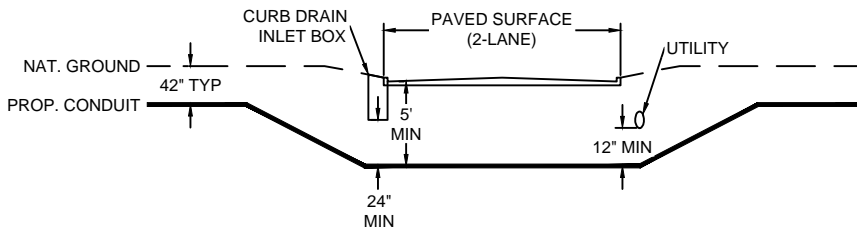
TWO LANE - ASPHALT ROAD - NO CURB



TYPICAL DETAIL "B"

---

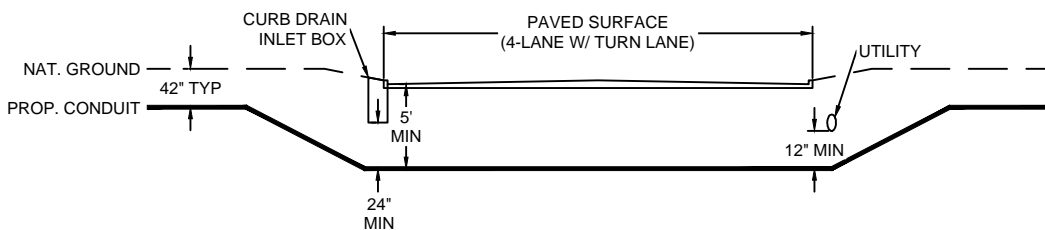
TWO LANE - CURBED ROAD



**TYPICAL DETAIL "C"**

---

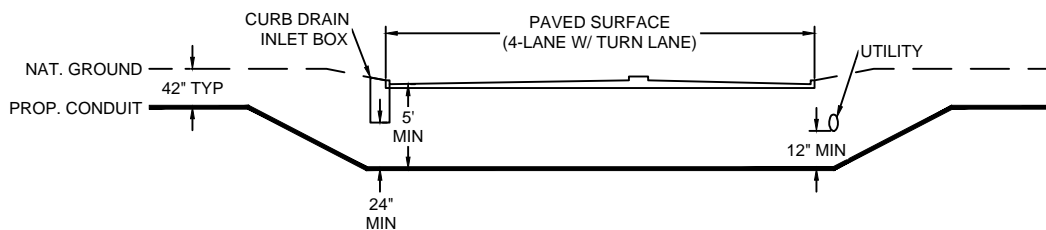
FOUR LANE (W/ TURN LANE) - CURBED ROAD - NO MEDIAN



**TYPICAL DETAIL "D"**

---

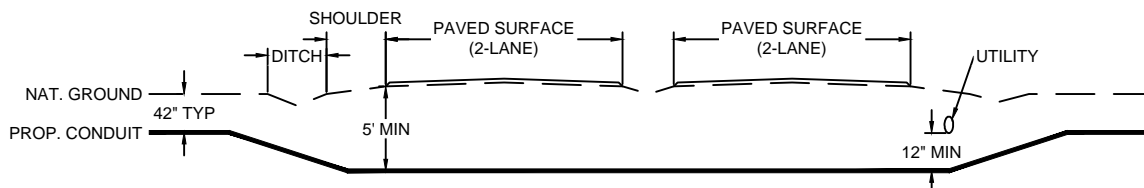
FOUR LANE (W/ TURN LANE) - CURBED ROAD - WITH MEDIA



TYPICAL DETAIL "E"

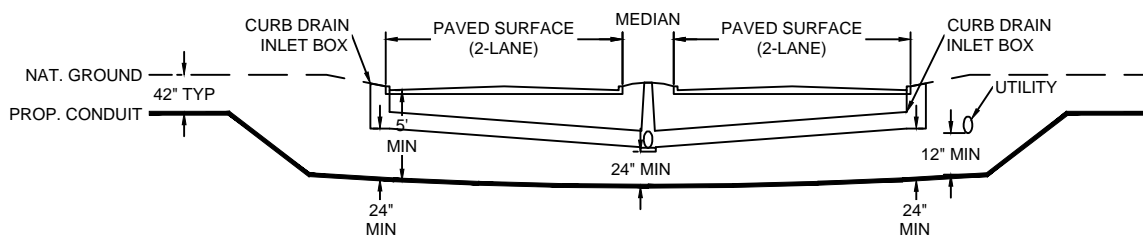
---

4 LANE - SPLIT ASPHALT ROAD - NO CUR



TYPICAL DETAIL "F"

4 LANE - SPLIT CURBED ROAD



MCImetro  
ACCESS TRANSMISSION SERVICES  
CORPORATION

## OUTSIDE PLANT CONSTRUCTION

TITLE: FIBER OPTIC ROUTE  
MISSOURI CITY TO CABRERA RD  
HOUSTON, TX

DATE: 8/21/18

ENGINEER: L. STALCUP

DRAWN BY: G.F.S. (JCV)

[illegible]

EXCEPT AS MAY BE OTHERWISE PROVIDED BY CONTRACT, THESE DRAWINGS AND SPECIFICATIONS SHALL REMAIN THE PROPERTY OF MCI COMMUNICATIONS SERVICES INC. BOTH BEING ISSUED IN STRICT CONFIDENCE AND SHALL NOT BE REPRODUCED, COPIED, OR USED FOR ANY PURPOSE WITHOUT SPECIFIC WRITTEN PERMISSION.

## SCALE

HORIZONTAL: 1"= N/A

VERTICAL: 1"= N/A

MP	TO MP
----	-------

SHEET 6A OF 18

FILE: ECC-FBRBLD01006BC.LIN



## AERIAL IN-LINE SLACK STORAGE DETAILS



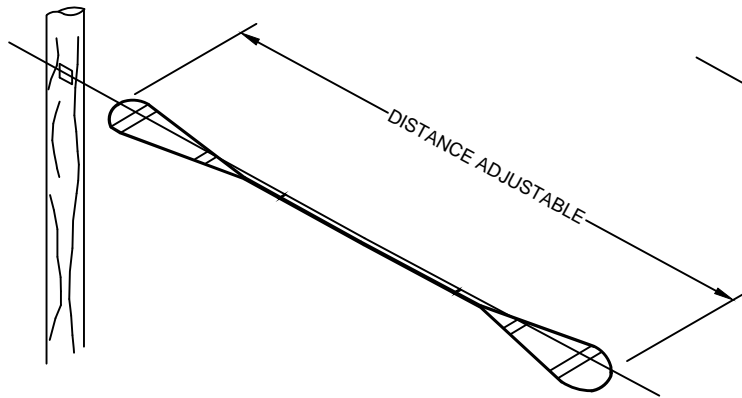
PROJECT: 1706ANAY.003

HOUSTON, TX

MISSOURI CITY TO CABRERA RD

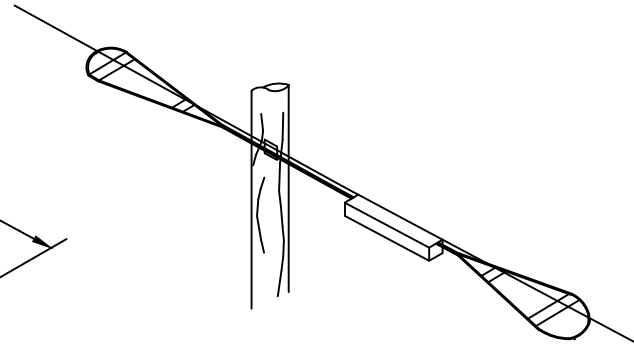
### TYPICAL DETAIL "A"

## RESERVE CABLE LENGTH STRAND STORAGE APPLICATION



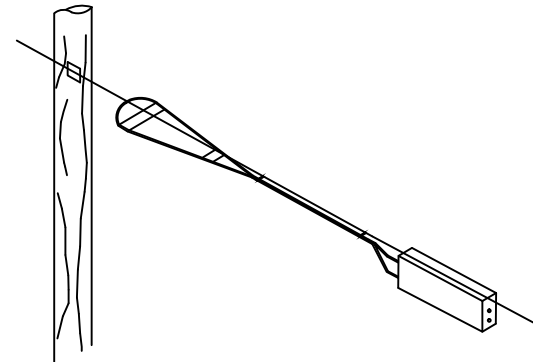
### TYPICAL DETAIL "B"

## IN-LINE SPLICE APPLICATION



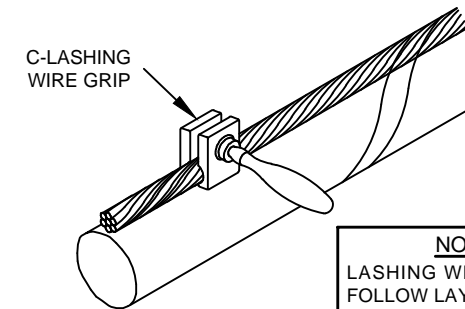
### TYPICAL DETAIL "C"

## BUTT SPLICE APPLICATION



### TYPICAL DETAIL "D"

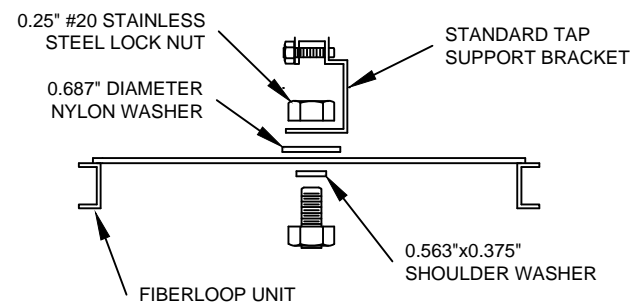
### LASHING WIRE GRIP AND CLAMP C-LASHING WIRE GRIP INSTALLED ON STRAND



**NOTE:**  
LASHING WIRE SHOULD  
FOLLOW LAY OF STRAND  
WIRES UNDER GRIP.

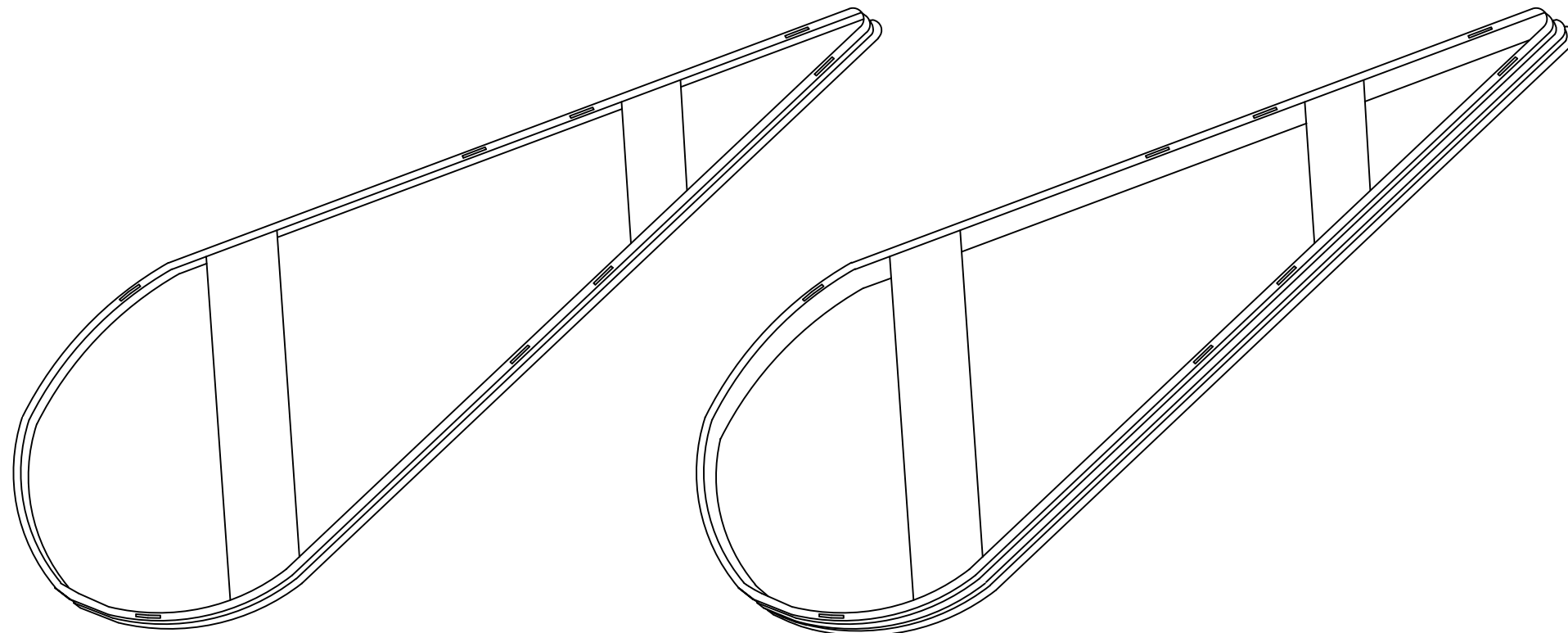
### TYPICAL DETAIL "E"

## HARDWARE KIT



### TYPICAL DETAIL "F"

## SINGLE & DOUBLE FIBER LOOPS



MCImetro  
ACCESS TRANSMISSION SERVICES  
CORPORATION

## OUTSIDE PLANT CONSTRUCTION

TITLE: FIBER OPTIC ROUTE  
MISSOURI CITY TO CABRERA RD  
HOUSTON, TX

DATE: 8/21/18

ENGINEER: L. STALCUP

DRAWN BY: G.F.S. (JCV)

## REVISIONS

[illegible]

EXCEPT AS MAY BE OTHERWISE PROVIDED BY CONTRACT, THESE DRAWINGS AND SPECIFICATIONS SHALL REMAIN THE PROPERTY OF MCI COMMUNICATIONS SERVICES INC. BOTH BEING ISSUED IN STRICT CONFIDENCE AND SHALL NOT BE REPRODUCED, COPIED, OR USED FOR ANY PURPOSE WITHOUT SPECIFIC WRITTEN PERMISSION.

SCALE

HORIZONTAL: 1"= N/A

VERTICAL: 1"= N/A

MP	TO MP
----	-------

SHEET	6C	OF	18
-------	----	----	----

FILE: ECC-FBRBLD01006CC.LIN

## TYPICAL CROSSING PROFILE DETAILS: AERIAL



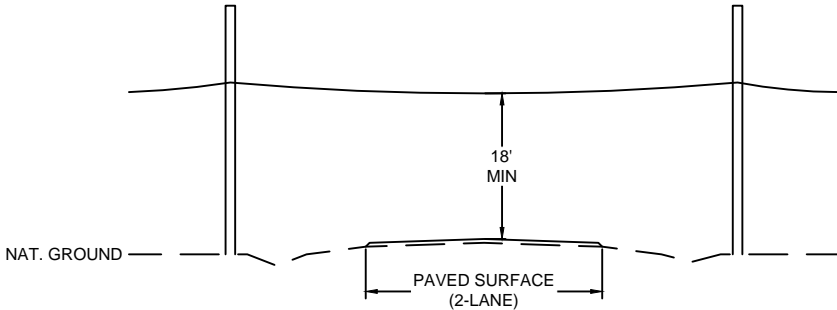
PROJECT: 1706ANAY.003

HOUSTON, TX

MISSOURI CITY TO CABRERA RD

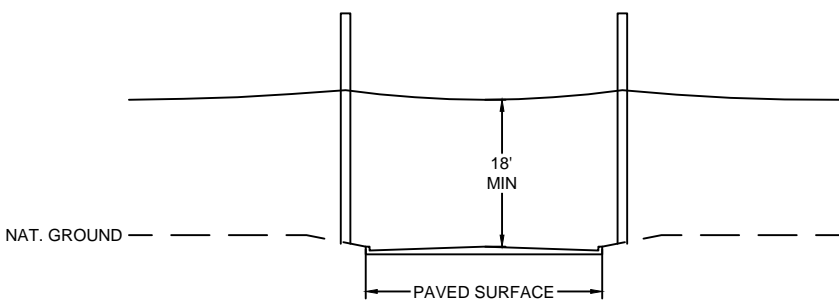
## TYPICAL DETAIL "A"

TWO LANE - ASPHALT ROAD - NO CURB



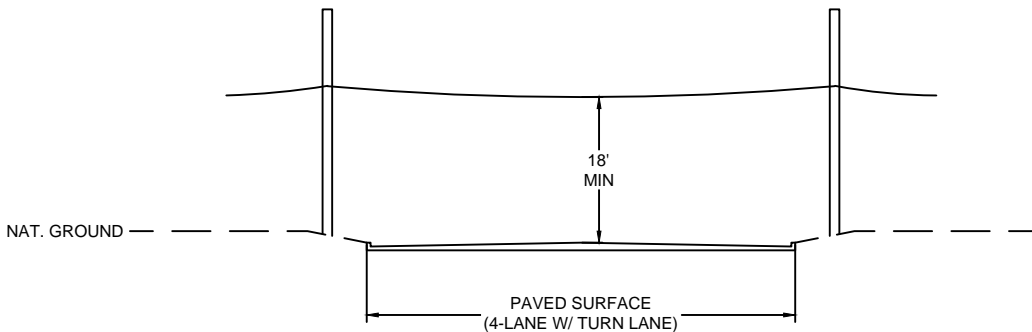
## TYPICAL DETAIL "E"

TWO LANE - CURBED ROAD



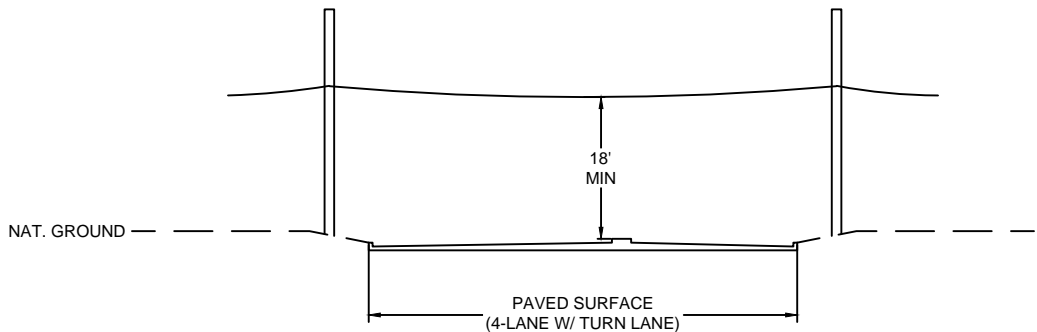
## TYPICAL DETAIL "C"

FOUR LANE (W/ TURN LANE) - CURBED ROAD - NO MEDIAN



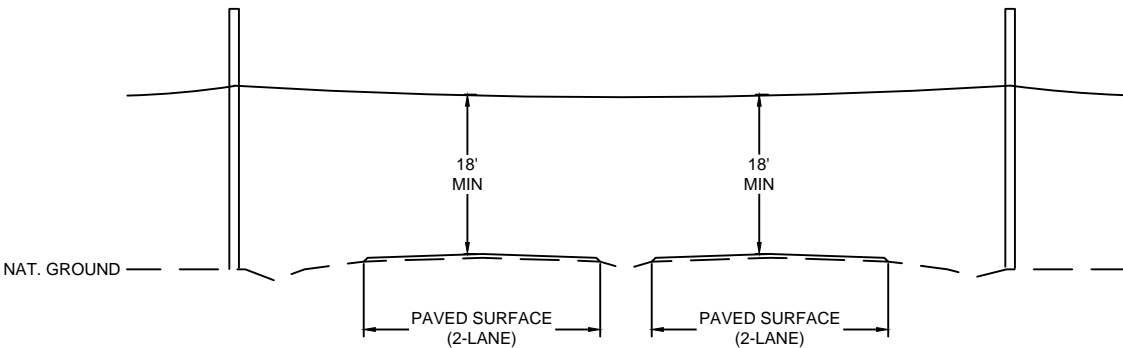
## TYPICAL DETAIL "D"

FOUR LANE (W/ TURN LANE) - CURBED ROAD - WITH MEDI



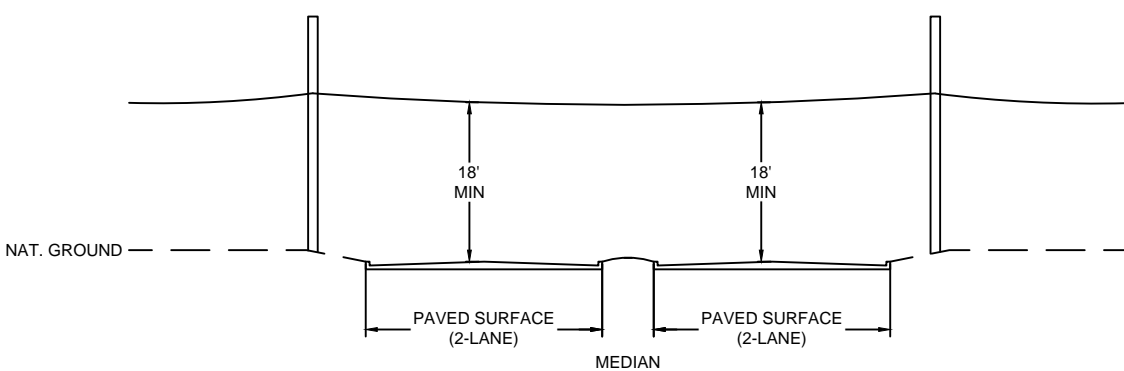
## TYPICAL DETAIL "E"

4 LANE - SPLIT ASPHALT ROAD - NO CUR



## TYPICAL DETAIL "F"

4 LANE - SPLIT CURBED ROAD



MCImetro  
ACCESS TRANSMISSION SERVICES  
CORPORATION

## OUTSIDE PLANT CONSTRUCTION

TITLE: FIBER OPTIC ROUTE  
MISSOURI CITY TO CABRERA RD  
HOUSTON, TX

DATE: 8/21/18

ENGINEER: L. STALCUP

DRAWN BY: G.F.S. (JCV)

## REVISIONS

[illegible]

EXCEPT AS MAY BE OTHERWISE PROVIDED BY CONTRACT, THESE DRAWINGS AND SPECIFICATIONS SHALL REMAIN THE PROPERTY OF MCC COMMUNICATIONS SERVICES INC. BOTH BEING ISSUED IN STRICT CONFIDENCE AND SHALL NOT BE REPRODUCED, COPIED, OR USED FOR ANY PURPOSE WITHOUT SPECIFIC WRITTEN PERMISSION.

## SCALE

HORIZONTAL: 1"= N/A

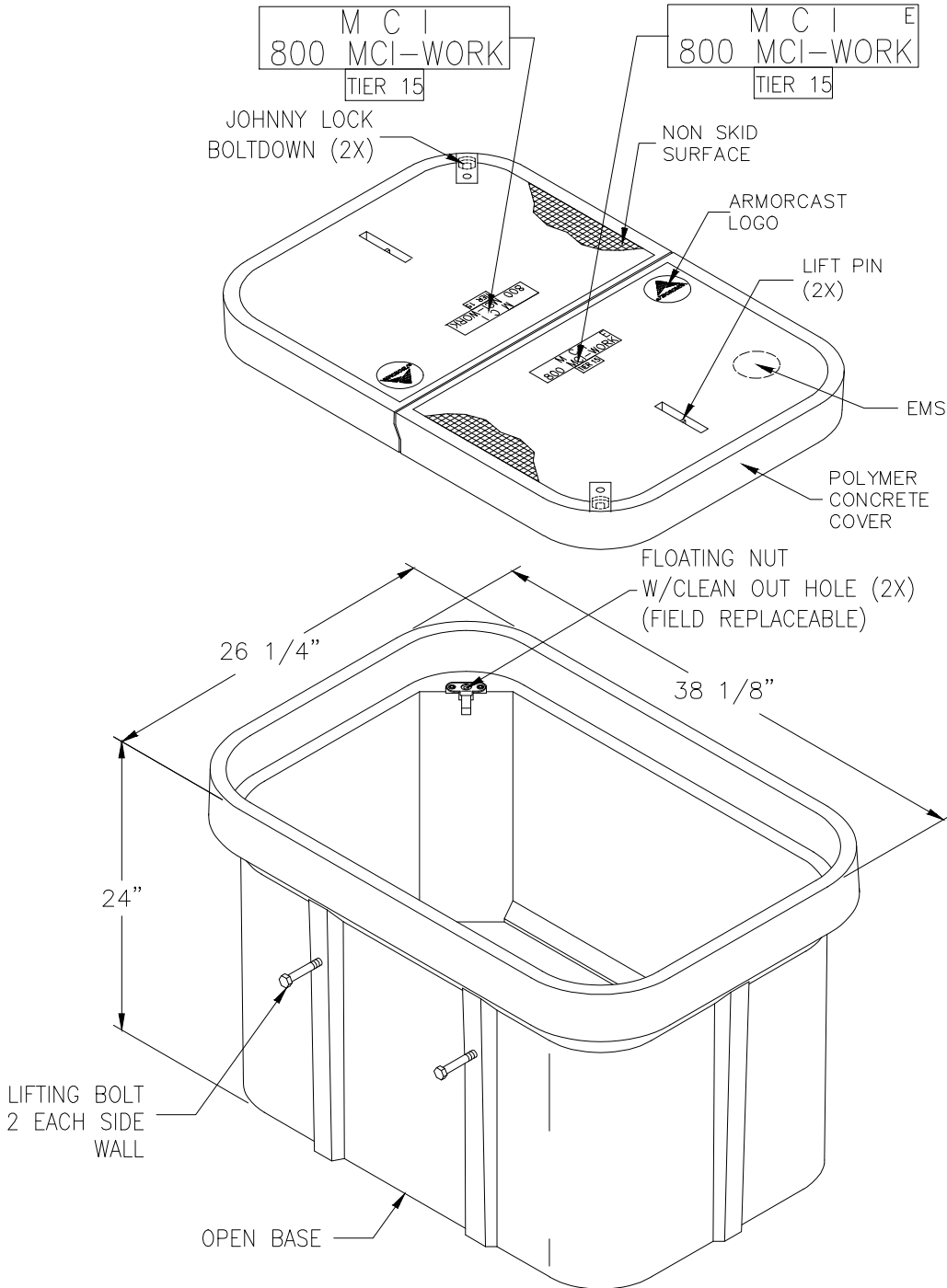
VERTICAL: 1"= N/A

MP	TO MP
----	-------


SHEET 6D OF 18

FILE: ECC-FBRBLD01006AC.LIN

# 24" x 36" x 24" POLYMER CONCRETE BOX ASSEMBLY



NOTE:  
BOX AND COVER ASSEMBLY MEET  
ANSI/SCTE 77 TIER 15 LOADING

FILE # A6-1974TAPMC14	 <b>ARMORCAST® PRODUCTS COMPANY</b>	13230 Saticoy Street, North Hollywood, CA 91605 (818) 982-3600	PART DESCRIPTION <b>24" X 36" X 24" POLYMER CONCRETE BOX ASSEMBLY</b>			
			CUSTOMER <b>VERIZON</b>			
*THE INFORMATION IN THIS DRAWING IS CONFIDENTIAL. THE DRAWING IS NOT TO BE REPRODUCED OR ITS CONTENTS DIVULGED IN ANY WAY WHATSOEVER EXCEPT WITH THE PRIOR WRITTEN APPROVAL OF ARMORCAST PRODUCTS COMPANY. IT IS THE PROPERTY OF AND MUST BE RETURNED TO ARMORCAST PRODUCTS COMPANY, 13230 SATICOY STREET, NORTH HOLLYWOOD, CALIFORNIA 91605.*			DRAWN <b>OA</b>	DATE <b>10/17</b>	SCALE <b>NONE</b>	MAX. LOAD <b>TIER 15</b>
			APPROV. <b>WS</b>	<b>10/17</b>	MATERIAL <b>POLYMER CONCRETE</b>	DRAWING NUMBER <b>A6001974TAPMC14</b>



PROJECT: 1706ANAY.003

HOUSTON, TX

MISSOURI CITY TO CABRERA RD

[illegible]

MCImetro  
ACCESS TRANSMISSION SERVICES  
CORPORATION

OUTSIDE PLANT CONSTRUCTION

TITLE: FIBER OPTIC ROUTE  
MISSOURI CITY TO CABRERA RD  
HOUSTON, TX

DATE: 8/21/18

ENGINEER: L. STALCUP

DRAWN BY: G.F.S. (JCV)

## REVISIONS

[illegible]

EXCEPT AS MAY BE OTHERWISE PROVIDED BY CONTRACT, THESE DRAWINGS AND SPECIFICATIONS SHALL REMAIN THE PROPERTY OF MCI COMMUNICATIONS SERVICES INC. BOTH BEING ISSUED IN STRICT CONFIDENCE AND SHALL NOT BE REPRODUCED, COPIED, OR USED FOR ANY PURPOSE WITHOUT SPECIFIC WRITTEN PERMISSION.

## SCALE

HORIZONTAL: 1"= N/A

VERTICAL: 1"= N/A

MP	TO MP
----	-------

SHEET 07 OF 18

FILE: ECC-FBRBLD01007AC.LIN

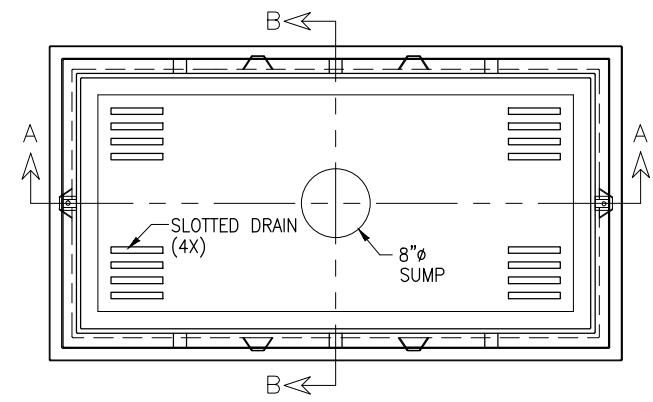
30" x 60" x 30" 30K STANDARD HANDHOLE DETAILS



PROJECT: 1706ANAY.003  
HOUSTON, TX  
MISSOURI CITY TO CABRERA RD

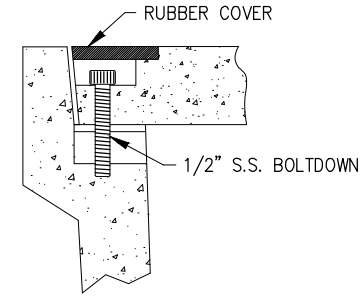
DETAIL "A"

LOCKING DEVICE  
CROSS SECTION



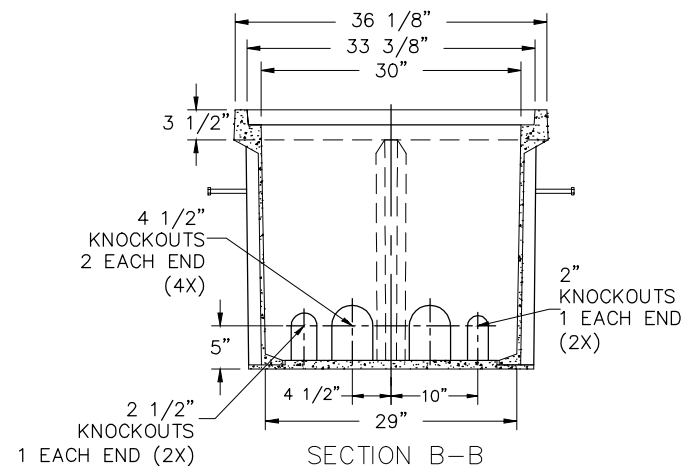
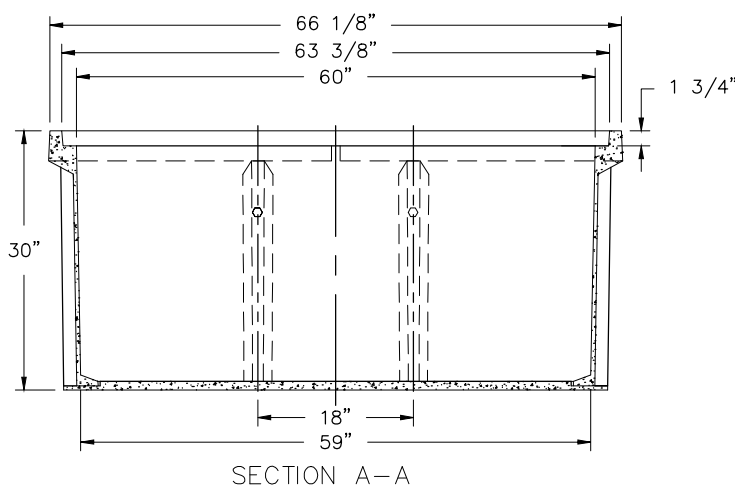
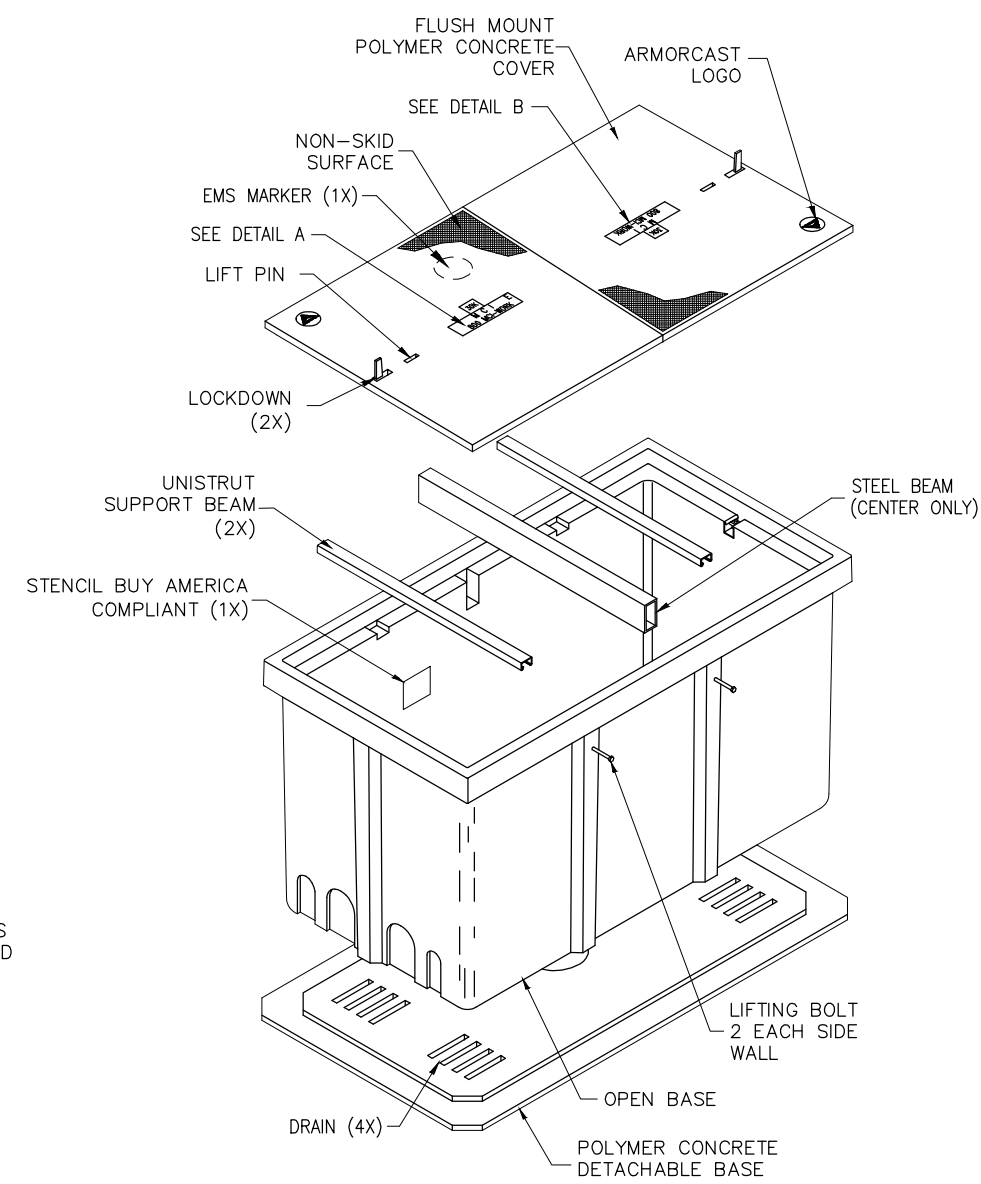
DETAIL "B"

FLUSH MOUNT  
COVER DETAIL



DETAIL "C"

EXPLODED ISOMETRIC DETAIL



30K  
M C I E  
800 MCI-WORK  
DETAIL A

30K  
M C I E  
800 MCI-WORK  
DETAIL B

SEALED PLASTIC BAG PLACED INSIDE VAULT TO CONTAIN

ITEM	QTY	
1	(1)	JOHNNY LOCK KEY
2	(2)	S.S. JOHNNY BOLTS W/FLAT WASHER.
3		SHRINK WRAP COVERS TO FRAME FOR PACKAGING.

**30K STANDARD HANDHOLE**  
**30"x60"x30" POLYMER CONCRETE FLUSH MOUNT ASSEMBLY**  
**MEETS SCTE/ANSI 77-TIER 22 LOADING CRITERIA**  
**ADDITIONAL REQUIREMENTS:**  
**DESIGNED LOAD: 30,000 LBS**  
**MINIMUM FAILURE LOAD: 45,000 LBS**

McImetro  
ACCESS TRANSMISSION SERVICES  
CORPORATION  
OUTSIDE PLANT CONSTRUCTION  
TITLE: FIBER OPTIC ROUTE  
MISSOURI CITY TO CABRERA RD  
HOUSTON, TX

DATE: 8/21/18  
ENGINEER: L. STALCUP  
DRAWN BY: G.F.S. (JCV)

REVISIONS			
No.	DATE	DESCRIPTION	BY

EXCEPT AS MAY BE OTHERWISE PROVIDED BY CONTRACT, THESE DRAWINGS AND SPECIFICATIONS SHALL REMAIN THE PROPERTY OF MCI COMMUNICATIONS SERVICES INC. BOTH BEING ISSUED IN STRICT CONFIDENCE AND SHALL NOT BE REPRODUCED, COPIED, OR USED FOR ANY PURPOSE WITHOUT SPECIFIC WRITTEN PERMISSION.

**SCALE**  
HORIZONTAL: 1"= N/A  
VERTICAL: 1"= N/A  
MP \_\_\_\_\_ TO MP \_\_\_\_\_  
SHEET 07A OF 18  
FILE: ECC-FBRBLD01007 AC.LIN

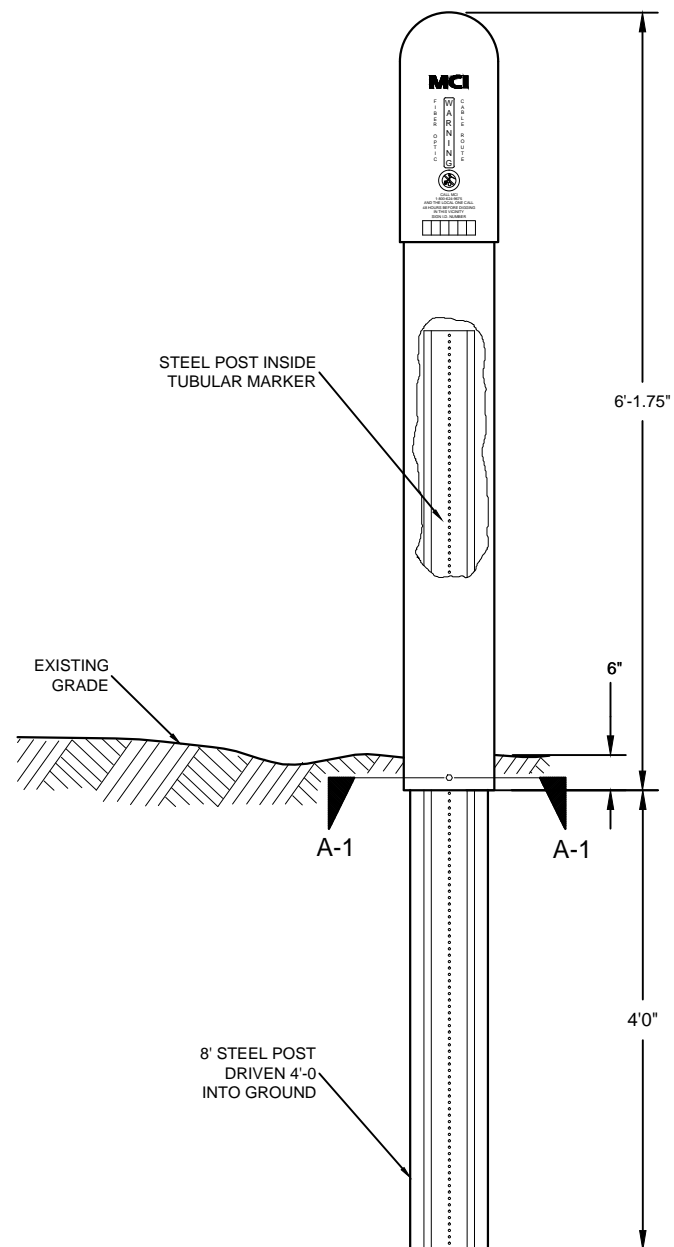


## TUBULAR MARKER DETAILS

DETAIL "A"

---

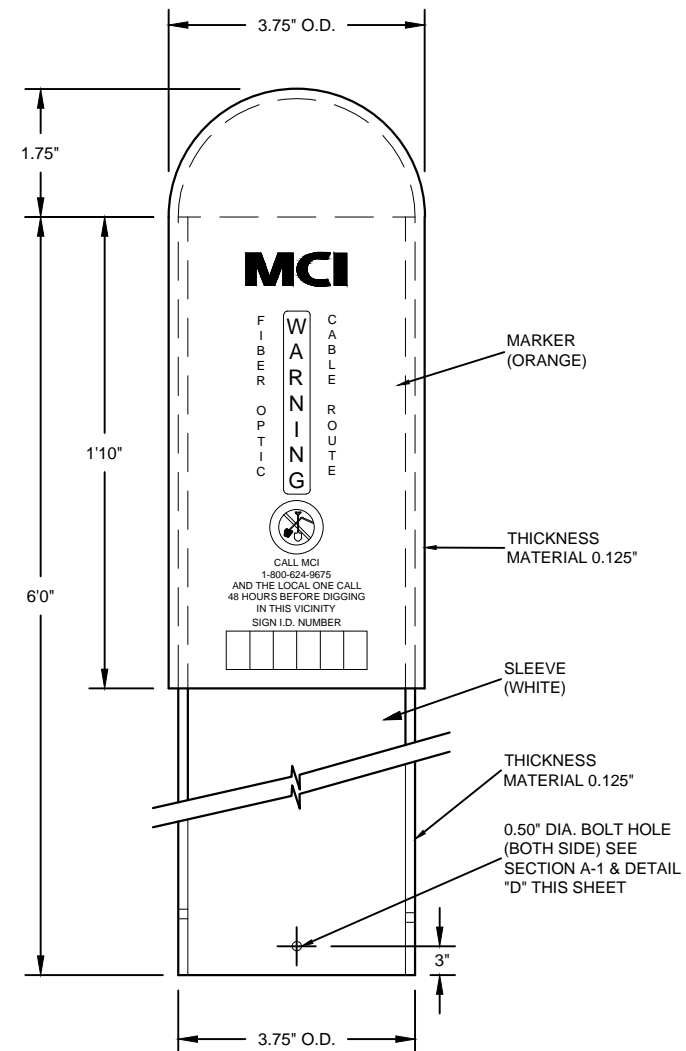
INSTALLATION VIEW



DETAIL "B"

---

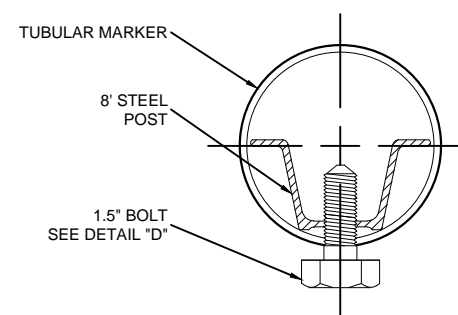
FRONT VIEW



SECTION A-1

---

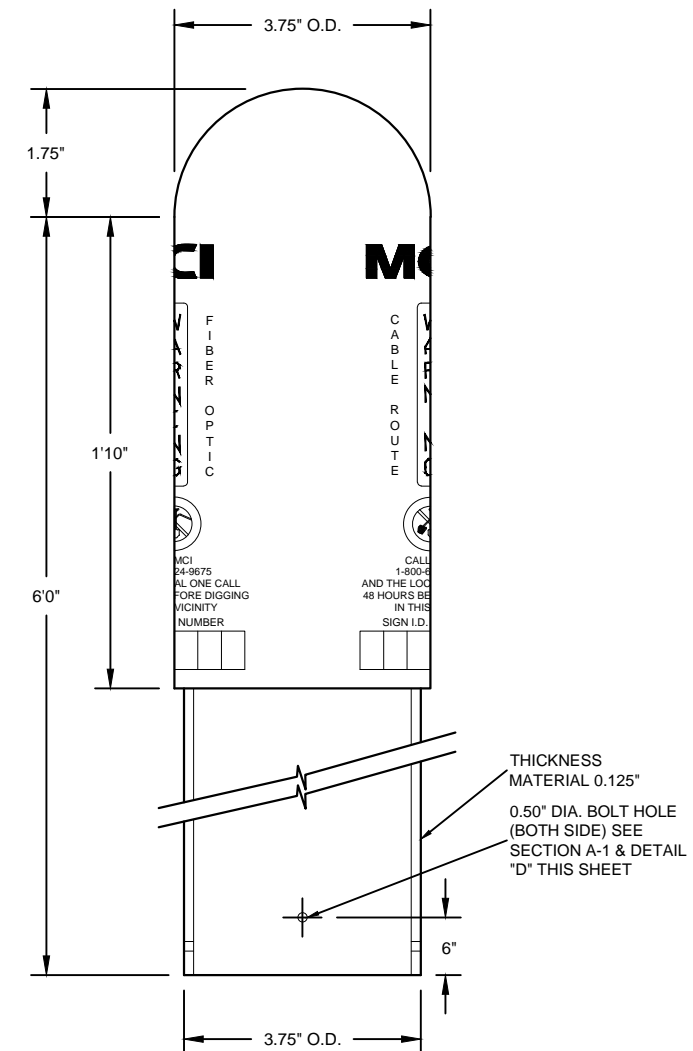
TUBULAR MARKER



DETAIL "C"

---

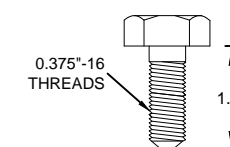
SIDE VIEW



DETAIL "D"

---

1.5" BOLT



PROJECT: 1706ANAY.003

HOUSTON, TX

MISSOURI CITY TO CABRERA RD

[illegible]

MCImetro ACCESS TRANSMISSION SERVICES CORPORATION	OUTSIDE PLANT CONSTRUCTION
TITLE: FIBER OPTIC ROUTE MISSOURI CITY TO CABRERA RD HOUSTON, TX	

DATE: 8/21/18

ENGINEER: L. STALCUP

DRAWN BY: G.F.S. (JCV)

[illegible]

EXCEPT AS MAY BE OTHERWISE PROVIDED BY CONTRACT, THESE DRAWINGS AND SPECIFICATIONS SHALL REMAIN THE PROPERTY OF MCI COMMUNICATIONS SERVICES INC. BOTH BEING ISSUED IN STRICT CONFIDENCE AND SHALL NOT BE REPRODUCED, COPIED, OR USED FOR ANY PURPOSE WITHOUT SPECIFIC WRITTEN PERMISSION.

SCALE
-------

HORIZONTAL: 1"= N/A

VERTICAL: 1"= N/A

MP	TO MP
----	-------

SHEET 8 OF 18

File: ECC-FRPRID01008AC.IN

FREE: ECC-T DRBBD01000AC.EIN

# TRAFFIC CONTROL PLAN DETAILS



PROJECT: 1708ANAY 003  
HOUSTON, TX  
MISSOURI CITY TO CABRERA RD

McMETRIC  
ACCESS TRANSMISSION SERVICES  
CORPORATION  
OUTSIDE PLANT CONSTRUCTION  
TITLE: FIBER OPTIC ROUTE  
MISSOURI CITY TO CABRERA RD  
HOUSTON, TX

DATE: 8/21/18  
ENGINEER: L. STALCUP  
DRAWN BY: O.F.S. (JCW)

REVISIONS			
No.	DATE	DESCRIPTION	BY

EXCEPT AS MAY BE OTHERWISE PROVIDED BY CONTRACT, THESE CONDITIONS AND SPECIFICATIONS SHALL REMAIN THE PROPERTY OF AND BE LOANED TO THE CLIENT BY THE ENGINEER. NO PART OF THESE CONDITIONS AND SPECIFICATIONS SHALL BE REPRODUCED OR TRANSMITTED IN ANY FORM OR BY ANY MEANS, WITHOUT SPECIFIC WRITTEN PERMISSION.

SCALE  
HORIZONTAL: 1"= N/A  
VERTICAL: 1"= N/A  
MP TO MP  
SHEET 8A OF 18  
FILE: ECC-FBRBLD01C08BC.LIN

## TRAFFIC CONTROL PLAN SECTION SHALL BE COMPLETED BY ENGINEER

ROADWAY	POSTED SPEED	PAVER LENGTH	SPACING CHANGES TO CHANGING DEVICES	SPACING TAPER	SPACING TANGENT	SPACING BUFFER	SUPPLY SPACE
CABRERA DR	35 MPH	24'	30'	70'	180'	120'	120'
CULFIELD	45 MPH	32'	42'	80'	240'	160'	160'

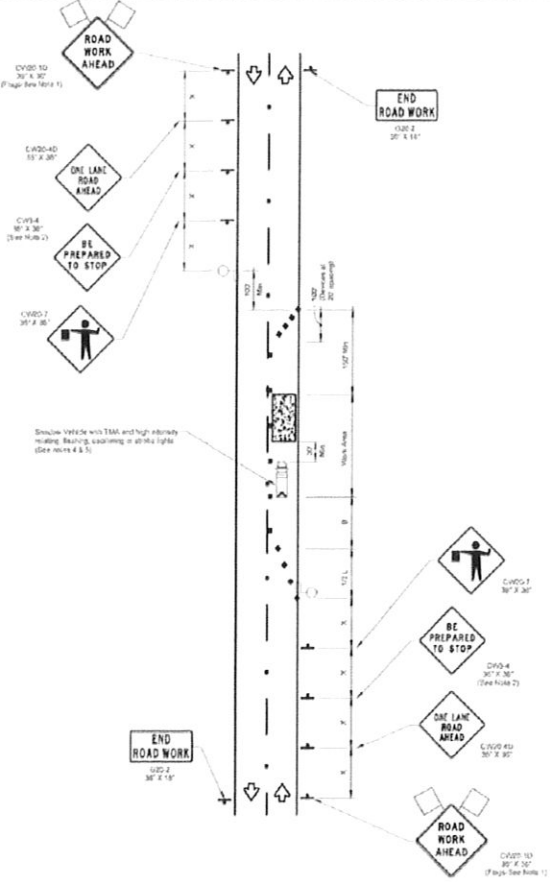
LEGEND	
Type 3 Portable	Channeling Device
Trailer Mounted Flagger	Flagger
Trailer Mounted Flagger	Flagger
Trailer Mounted Flagger	Flagger
Trailer Mounted Flagger	Flagger
Trailer Mounted Flagger	Flagger
Trailer Mounted Flagger	Flagger
Trailer Mounted Flagger	Flagger
Trailer Mounted Flagger	Flagger
Trailer Mounted Flagger	Flagger

Posted Speed	Minimum Channeling Device Length	Minimum Spacing of Channeling Devices	Minimum Spacing of Channeling Devices	Minimum Spacing of Channeling Devices	Minimum Spacing of Channeling Devices	Minimum Spacing of Channeling Devices	Minimum Spacing of Channeling Devices
35	120	120	120	120	120	120	120
40	120	120	120	120	120	120	120
45	120	120	120	120	120	120	120
50	120	120	120	120	120	120	120
55	120	120	120	120	120	120	120
60	120	120	120	120	120	120	120
65	120	120	120	120	120	120	120
70	120	120	120	120	120	120	120
75	120	120	120	120	120	120	120

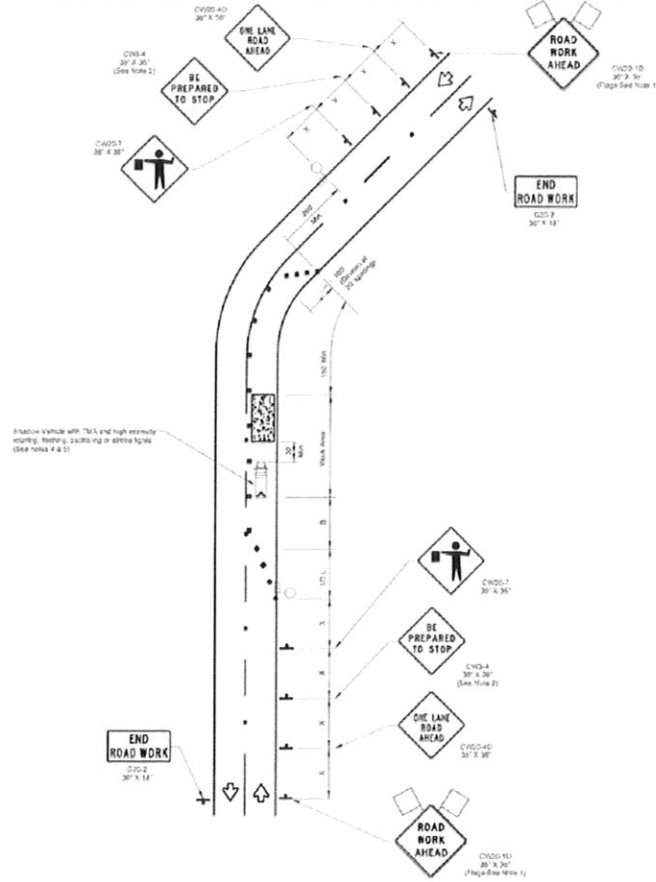
Conventional Roads Only  
\* Taper lengths have been rounded off  
\* Length of Taper (T) = Minimum of (T) or (T) (See Note 1)

## GENERAL NOTES

- Flags attached to signs when shown as a CPTA sign.
- All traffic control devices shall be as specified, except those devices with the triangle symbol as indicated.
- When work vehicles or other equipment are parked near the right-of-way line and not parked on the right-of-way line, they shall be marked with reflective triangles.
- A shadow vehicle with TMA and high intensity lighting, flashing, warning or other lights (see notes 4 & 5).
- Additional Shadow Vehicle with TMA may be positioned off the paved surface, not to be used when in the right-of-way to prevent work stoppage.
- Consequence shall include and shall be a condition with part of the TMA work stoppage.
- See notes and the Standard from Part 1, Part 2 and Part 3 of the Standard.
- Off duty police officers are required to direct traffic when applicable.
- It is the responsibility of the contractor to provide the necessary equipment and personnel to complete the project.



ONE-LANE TWO-WAY SINGLE LANE CLOSURE  
CONTROL WITH FLAGGERS  
(ON STRAIGHT SECTION OF ROADWAY)



ONE-LANE TWO-WAY SINGLE LANE CLOSURE  
CONTROL WITH FLAGGERS  
(ON CURVED SECTION OF ROADWAY)

NO.	DATE	DESCRIPTION	BY
1	8/21/18	UPDATED DEPARTMENT NAME & GENERAL NOTES	ALM/MS



TEO, LLC  
5518 Community Drive  
Houston, Texas  
77056  
281.536.1170 OFFICE  
713.688.8334 FAX  
info@teo.com  
P.O. Box 4, 77056



PROJECT NO.	1708ANAY 003
CLIENT	VERIZON BUSINESS
DESIGNER	TEO, LLC
CHECKED BY	ALM/MS
DATE	8/21/18



MISSOURI CITY TO CABRERA RD

CLARIFICATION NO.	QUANTITY
PLACE HANDHOLE	3
PROP. 1-2" HDPE	580'
PULL 1-144F CABLE	860'
PLACE MARKER	3

[illegible]

MCImetro ACCESS TRANSMISSION SERVICES CORPORATION	OUTSIDE PLANT CONSTRUCTION	TITLE: FIBER OPTIC ROUTE MISSOURI CITY TO CABRERA RD HOUSTON, TX
---	----------------------------	--

DRAWN BY: G.F.S. (JCV)

[illegible]

EXCEPT AS MAY BE OTHERWISE PROVIDED BY  
CONTRACT, THESE DRAWINGS AND SPECIFICATIONS  
SHALL REMAIN THE PROPERTY OF MCI  
COMMUNICATIONS SERVICES INC. BOTH BEING  
ISSUED IN STRICT CONFIDENCE AND SHALL NOT BE  
REPRODUCED, COPIED, OR USED FOR ANY  
PURPOSE WITHOUT SPECIFIC WRITTEN PERMISSION.

HORIZONTAL: 1" = 50'

VERTICAL: 1"= N/A

MP	TO MP
----	-------

SHEET 09 OF 18

FILE: ECC-FBRBLD01009AC.LIN

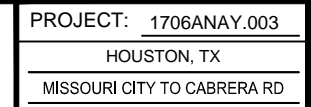


RIGHT OF WAY LINES WERE ESTABLISHED BY RESEARCH OF PUBLIC INFORMATION. NO BOUNDARY SURVEY OR PROPERTY LINE SURVEY WAS ESTABLISHED BY GOLDEN FIELD SERVICES, INC.. RIGHT OF WAY BOUNDARY MUST BE FIELD VERIFIED BY A REGISTERED PROFESSIONAL LAND SURVEYOR TO ACCURATELY VERIFY RIGHT OF WAY AND PROPERTY LINES PRIOR TO CONSTRUCTION.

**!!! CAUTION !!!**  
**PIPELINE SERVICE LINES**  
**THRU THIS AREA HAVE NOT BEEN**  
**IDENTIFIED NOR INDICATED.**



CALL BEFORE YOU DIG  
1-800-545-6005  
48 HOURS NOTICE REQUIRED

[illegible]

DATE: 8/21/18
ENGINEER: L. STALCUP
DRAWN BY: G.F.S. (JCV)

EXCEPT AS MAY BE OTHERWISE PROVIDED BY CONTRACT, THESE DRAWINGS AND SPECIFICATIONS SHALL REMAIN THE PROPERTY OF MCI COMMUNICATIONS SERVICES INC. BOTH BEING ISSUED IN STRICT CONFIDENCE AND SHALL NOT BE REPRODUCED, COPIED, OR USED FOR ANY PURPOSE WITHOUT SPECIFIC WRITTEN PERMISSION.

HORIZONTAL:	1"= 50'
VERTICAL:	1"= N/A

SHEET 10 OF 18

FILE: ECC-FBRBLD01010AC.LIN

RIGHT OF WAY LINES WERE ESTABLISHED BY RESEARCH OF PUBLIC INFORMATION. NO BOUNDARY SURVEY OR PROPERTY LINE SURVEY WAS ESTABLISHED BY GOLDEN FIELD SERVICES, INC.. RIGHT OF WAY BOUNDARY MUST BE FIELD VERIFIED BY A REGISTERED PROFESSIONAL LAND SURVEYOR TO ACCURATELY VERIFY RIGHT OF WAY AND PROPERTY LINES PRIOR TO CONSTRUCTION.

CALL BEFORE YOU DIG  
1-800-545-6005  
48 HOURS NOTICE REQUIRED

HOUSTON, TX  
HARRIS COUNTY

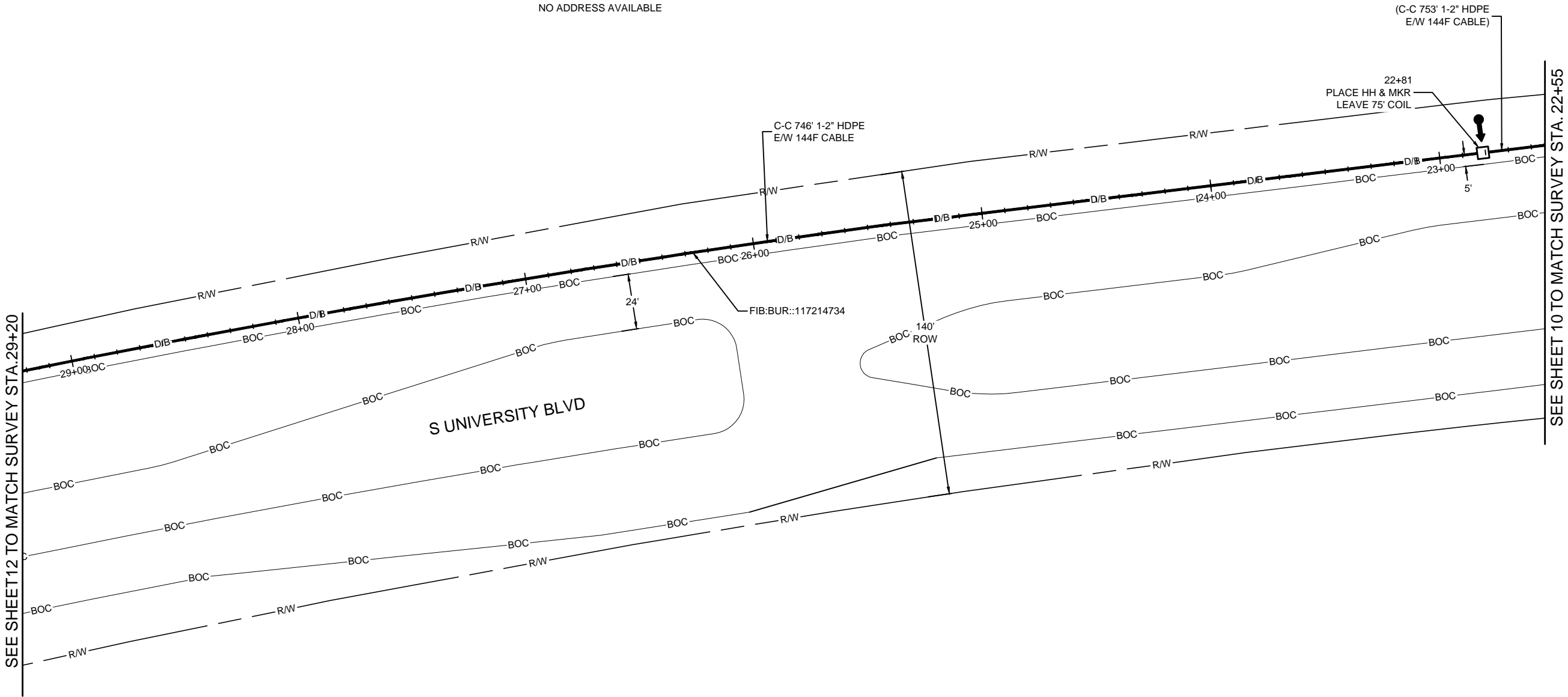


PROJECT: 1706ANAY.003

HOUSTON, TX  
MISSOURI CITY TO CABRERA RD

CLARIFICATION NO.	QUANTITY
PLACE HANDHOLE	1
PROP. 1-2" HDPE	440'
PULL 1-144F CABLE	515'
PLACE MARKER	1

NO ADDRESS AVAILABLE



UNDERGROUND UTILITIES HAVE BEEN PLOTTED FROM AVAILABLE RECORDS AND FIELD OBSERVATIONS BUT ARE NOT NECESSARILY EXACT. IT IS THE CONTRACTORS RESPONSIBILITY TO FIELD LOCATE ALL UNDERGROUND OBSTRUCTIONS AND UTILITIES PRIOR TO CONSTRUCTION. COMPLETE REPAIR OF ANY AND ALL DAMAGES INCURRED SHALL BE AT THE EXPENSE OF THE CONTRACTOR.

RIGHT OF WAY LINES WERE ESTABLISHED BY RESEARCH OF PUBLIC INFORMATION. NO BOUNDARY SURVEY OR PROPERTY LINE SURVEY WAS ESTABLISHED BY GOLDEN FIELD SERVICES, INC.. RIGHT OF WAY BOUNDARY MUST BE FIELD VERIFIED BY A REGISTERED PROFESSIONAL LAND SURVEYOR TO ACCURATELY VERIFY RIGHT OF WAY AND PROPERTY LINES PRIOR TO CONSTRUCTION.

**!!! CAUTION !!!**  
**PIPELINE SERVICE LINES**  
**THRU THIS AREA HAVE NOT BEEN**  
**IDENTIFIED NOR INDICATED.**



CALL BEFORE YOU DIG  
1-800-545-6005  
48 HOURS NOTICE REQUIRED

DATE: 8/21/18

ENGINEER: L. STALCUP

DRAWN BY: G.F.S. (JCV)

REVISIONS			
No.	DATE	DESCRIPTION	BY

EXCEPT AS MAY BE OTHERWISE PROVIDED BY CONTRACT, THESE DRAWINGS AND SPECIFICATIONS SHALL REMAIN THE PROPERTY OF MCI COMMUNICATIONS SERVICES INC. BOTH BEING ISSUED IN STRICT CONFIDENCE AND SHALL NOT BE REPRODUCED, COPIED, OR USED FOR ANY PURPOSE WITHOUT SPECIFIC WRITTEN PERMISSION.

SCALE	
HORIZONTAL:	1"= 50'
VERTICAL:	1"= N/A
MP	TO MP
SHEET	11 OF 18
FILE: ECC-FBRBLD01011 AC.LIN	

SEE SHEET 13 TO MATCH SURVEY STA. 33+60



MISSOURI CITY TO CABRERA RD

[illegible]

MISSOURI CITY TO CABRERA RD  
HOUSTON, TX

EXCEPT AS MAY BE OTHERWISE PROVIDED BY CONTRACT, THESE DRAWINGS AND SPECIFICATIONS SHALL REMAIN THE PROPERTY OF MCI COMMUNICATIONS SERVICES INC. BOTH BEING ISSUED IN STRICT CONFIDENCE AND SHALL NOT BE REPRODUCED, COPIED, OR USED FOR ANY PURPOSE WITHOUT SPECIFIC WRITTEN PERMISSION.

FILE: ECC-FBRBLD01012AC.LIN



RIGHT OF WAY LINES WERE ESTABLISHED BY RESEARCH OF PUBLIC INFORMATION. NO BOUNDARY SURVEY OR PROPERTY LINE SURVEY WAS ESTABLISHED BY GOLDEN FIELD SERVICES, INC.. RIGHT OF WAY BOUNDARY MUST BE FIELD VERIFIED BY A REGISTERED PROFESSIONAL LAND SURVEYOR TO ACCURATELY VERIFY RIGHT OF WAY AND PROPERTY LINES PRIOR TO CONSTRUCTION.



CALL BEFORE YOU DIG  
1-800-545-6005  
48 HOURS NOTICE REQUIRED

PROJECT: 1706ANAY.003

MISSOURI CITY TO CABRERA RD

[illegible]

TITLE: FIBER OPTIC ROUTE  
MISSOURI CITY TO CABRERA RD  
HOUSTON, TX

[illegible]

FILE: ECC-FBRBLD01013AC.LIN



RIGHT OF WAY LINES WERE ESTABLISHED BY RESEARCH OF PUBLIC INFORMATION. NO BOUNDARY SURVEY OR PROPERTY LINE SURVEY WAS ESTABLISHED BY GOLDEN FIELD SERVICES, INC.. RIGHT OF WAY BOUNDARY MUST BE FIELD VERIFIED BY A REGISTERED PROFESSIONAL LAND SURVEYOR TO ACCURATELY VERIFY RIGHT OF WAY AND PROPERTY LINES PRIOR TO CONSTRUCTION.



CALL BEFORE YOU DIG  
1-800-545-6005  
48 HOURS NOTICE REQUIRED



HOUSTON, TX  
HARRIS COUNTY



PROJECT: 1706ANAY.003

HOUSTON, TX

MISSOURI CITY TO CABRERA RD

CLARIFICATION NO.	QUANTITY
PLACE HANDHOLE	3
PROP. 1-2" HDPE	269'
PULL 1-144F CABLE	494'
PLACE 6M STRAND	301'
LASH 1-144F CABLE	276'
DOWN GUY & ANCHOR	1
RISER: 2" U GUARD	1
PLACE MARKER	3

McImetro  
ACCESS TRANSMISSION SERVICES  
CORPORATION

OUTSIDE PLANT CONSTRUCTION

TITLE: FIBER OPTIC ROUTE  
MISSOURI CITY TO CABRERA RD  
HOUSTON, TX

DATE: 8/21/18

ENGINEER: L. STALCUP

DRAWN BY: G.F.S. (JCV)

REVISIONS			
No.	DATE	DESCRIPTION	BY

EXCEPT AS MAY BE OTHERWISE PROVIDED BY CONTRACT, THESE DRAWINGS AND SPECIFICATIONS SHALL REMAIN THE PROPERTY OF MCI COMMUNICATIONS SERVICES INC. BOTH BEING ISSUED IN STRICT CONFIDENCE AND SHALL NOT BE REPRODUCED, COPIED, OR USED FOR ANY PURPOSE WITHOUT SPECIFIC WRITTEN PERMISSION.

SCALE

HORIZONTAL: 1"= 50'

VERTICAL: 1"= N/A

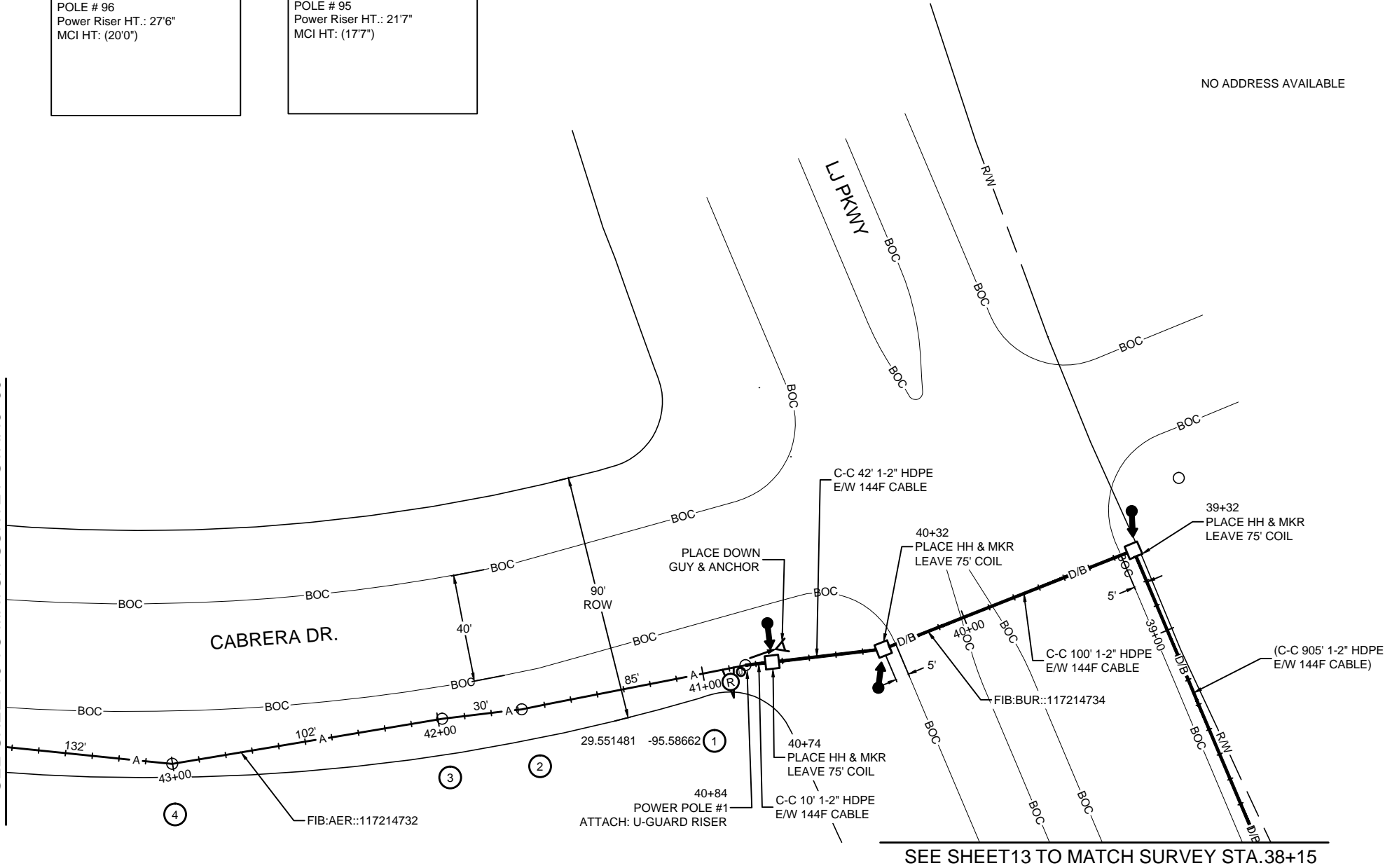
MP \_\_\_\_\_ TO MP \_\_\_\_\_

SHEET 14 OF 18

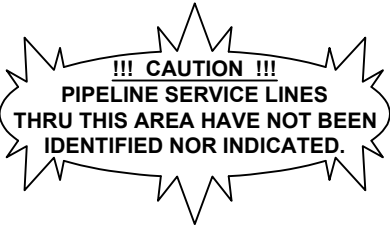
FILE: ECC-FBRBLD01014.AC.LIN

SEQ. POLE REF.# 1 40+84 OWNED BY: NA POLE # 98 Neutral HT.: 36'6" MCI HT: (20'0")	SEQ. POLE REF.# 2 41+69 OWNED BY: NA POLE # 98 Power Riser Drip Loop HT.: 18'8" MCI HT: (15'2")
SEQ. POLE REF.# 3 41+99 OWNED BY: NA POLE # 96 Power Riser HT.: 27'6" MCI HT: (20'0")	SEQ. POLE REF.# 4 43+01 OWNED BY: NA POLE # 95 Power Riser HT.: 21'7" MCI HT: (17'7")

SEE SHEET 15 TO MATCH SURVEY STA. 43+60



SEE SHEET 13 TO MATCH SURVEY STA. 38+15



CALL BEFORE YOU DIG  
1-800-545-6005  
48 HOURS NOTICE REQUIRED

UNDERGROUND UTILITIES HAVE BEEN PLOTTED FROM AVAILABLE RECORDS AND FIELD OBSERVATIONS BUT ARE NOT NECESSARILY EXACT. IT IS THE CONTRACTORS RESPONSIBILITY TO FIELD LOCATE ALL UNDERGROUND OBSTRUCTIONS AND UTILITIES PRIOR TO CONSTRUCTION. COMPLETE REPAIR OF ANY AND ALL DAMAGES INCURRED SHALL BE AT THE EXPENSE OF THE CONTRACTOR.

RIGHT OF WAY LINES WERE ESTABLISHED BY RESEARCH OF PUBLIC INFORMATION. NO BOUNDARY SURVEY OR PROPERTY LINE SURVEY WAS ESTABLISHED BY GOLDEN FIELD SERVICES, INC.. RIGHT OF WAY BOUNDARY MUST BE FIELD VERIFIED BY A REGISTERED PROFESSIONAL LAND SURVEYOR TO ACCURATELY VERIFY RIGHT OF WAY AND PROPERTY LINES PRIOR TO CONSTRUCTION.

HOUSTON, TX  
HARRIS COUNTY



PROJECT: 1706ANAY.003

HOUSTON, TX  
MISSOURI CITY TO CABRERA RD

CLARIFICATION NO.	QUANTITY
PLACE 1-6M STRAND	720'
LASH 1-144F CABLE	670'
DOWN GUY & ANCHOR	2

SEQ. POLE REF.# 10  
48+69  
OWNED BY: NA  
POLE # 36  
Transformer Drip Loop HT.: 25'3"  
Comcast HT: 18'6"  
Phonoscope Lightwave HT: 17'0"  
MCI HT: (16'0")

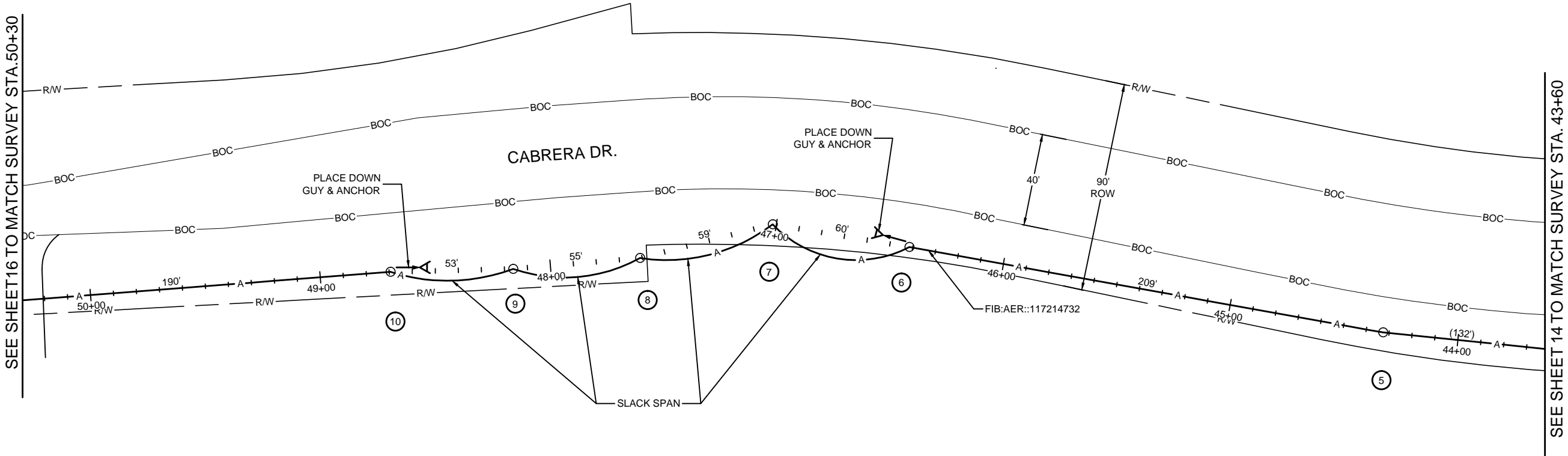
SEQ. POLE REF.# 9  
48+16  
OWNED BY: NA  
POLE # 90  
Neutral HT.: 30'9"  
Comcast HT: 19'5"  
Phonoscope Lightwave HT: 17'5"  
MCI HT: (16'5")

SEQ. POLE REF.# 8  
47+61  
OWNED BY: NA  
POLE # 91  
Neutral HT.: 36'6"  
Comcast HT: 23'6"  
Phonoscope Lightwave HT: 20'5"  
MCI HT: (19'5")

SEQ. POLE REF.# 7  
47+02  
OWNED BY: NA  
POLE # 92  
Power Riser HT.: 18'11"  
MCI HT: (14'11")

SEQ. POLE REF.# 6  
46+42  
OWNED BY: NA  
POLE # 93  
Neutral HT.: 31'0"  
MCI HT: (20'0")

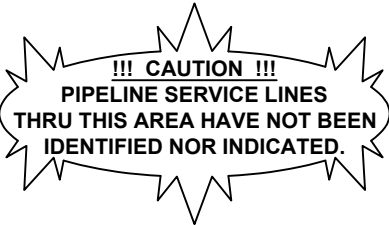
SEQ. POLE REF.# 5  
44+33  
OWNED BY: NA  
POLE # 94  
Transformer Drip Loop HT.: 21'9"  
MCI HT: (18'3")



NO ADDRESS AVAILABLE

UNDERGROUND UTILITIES HAVE BEEN PLOTTED FROM AVAILABLE RECORDS AND FIELD OBSERVATIONS BUT ARE NOT NECESSARILY EXACT. IT IS THE CONTRACTORS RESPONSIBILITY TO FIELD LOCATE ALL UNDERGROUND OBSTRUCTIONS AND UTILITIES PRIOR TO CONSTRUCTION. COMPLETE REPAIR OF ANY AND ALL DAMAGES INCURRED SHALL BE AT THE EXPENSE OF THE CONTRACTOR.

RIGHT OF WAY LINES WERE ESTABLISHED BY RESEARCH OF PUBLIC INFORMATION. NO BOUNDARY SURVEY OR PROPERTY LINE SURVEY WAS ESTABLISHED BY GOLDEN FIELD SERVICES, INC.. RIGHT OF WAY BOUNDARY MUST BE FIELD VERIFIED BY A REGISTERED PROFESSIONAL LAND SURVEYOR TO ACCURATELY VERIFY RIGHT OF WAY AND PROPERTY LINES PRIOR TO CONSTRUCTION.



CALL BEFORE YOU DIG  
1-800-545-6005  
48 HOURS NOTICE REQUIRED

DATE: 8/21/18  
ENGINEER: L. STALCUP  
DRAWN BY: G.F.S. (JCV)

REVISIONS			
No.	DATE	DESCRIPTION	BY


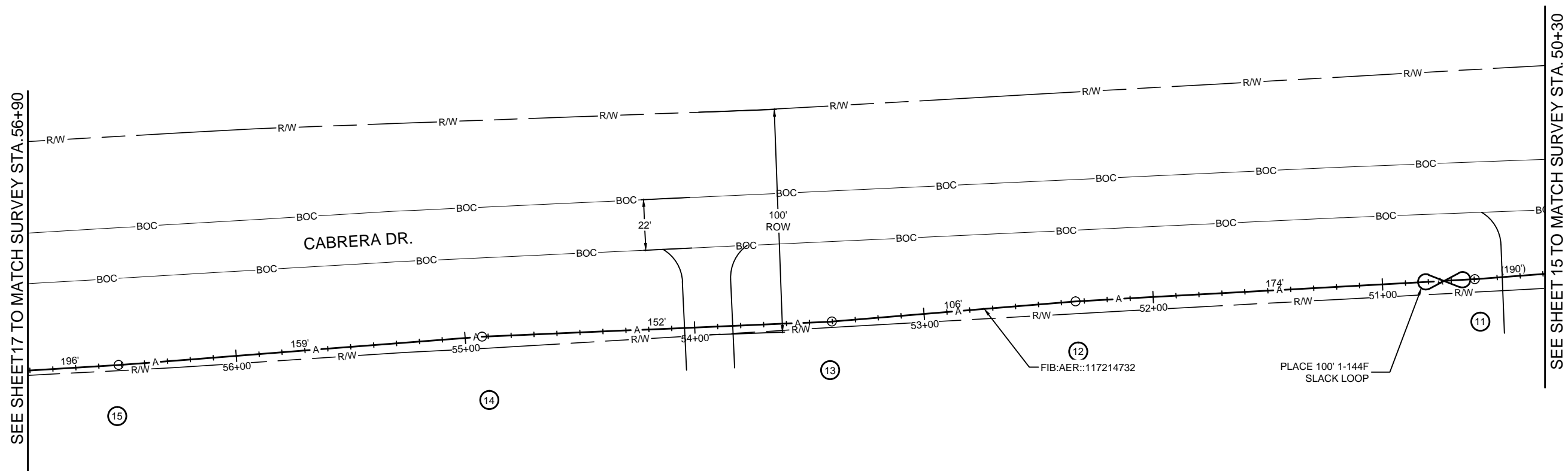
EXCEPT AS MAY BE OTHERWISE PROVIDED BY CONTRACT, THESE DRAWINGS AND SPECIFICATIONS SHALL REMAIN THE PROPERTY OF MCI COMMUNICATIONS SERVICES INC. BOTH BEING ISSUED IN STRICT CONFIDENCE AND SHALL NOT BE REPRODUCED, COPIED, OR USED FOR ANY PURPOSE WITHOUT SPECIFIC WRITTEN PERMISSION.

SCALE  
HORIZONTAL: 1"= 50'  
VERTICAL: 1"= N/A  
MP \_\_\_\_\_ TO MP \_\_\_\_\_  
SHEET 15 OF 18  
FILE: ECC-FBRBLD01015AC.LIN

MISSOURI CITY TO CABRERA RD

CLARIFICATION NO.	QUANTITY
PLACE 1-6M STRAND	660'
LASH 1-144F CABLE	760'

SEQ. POLE REF.# 11  
50+59  
OWNED BY: NA  
POLE # 35  
Transformer HT.: 25'3"  
Comcast HT: 20'9"  
Phonoscope Lightwave HT: 19'5"  
MCI HT: (18'5")



**!!! CAUTION !!!**  
**PIPELINE SERVICE LINES**  
**THRU THIS AREA HAVE NOT BEEN**  
**IDENTIFIED NOR INDICATED.**



## SCALE

MP	TO MP
----	-------

SHEET	16	OF	18
-------	----	----	----

FILE: ECC-FBRBLD01016AC.LIN

RIGHT OF WAY LINES WERE ESTABLISHED BY RESEARCH OF PUBLIC INFORMATION. NO BOUNDARY SURVEY OR PROPERTY LINE SURVEY WAS ESTABLISHED BY GOLDEN FIELD SERVICES, INC.. RIGHT OF WAY BOUNDARY MUST BE FIELD VERIFIED BY A REGISTERED PROFESSIONAL LAND SURVEYOR TO ACCURATELY VERIFY RIGHT OF WAY AND PROPERTY LINES PRIOR TO CONSTRUCTION.

HOUSTON, TX  
HARRIS COUNTY  
SEE SHEET 18 TO MATCH SURVEY STA. 64+05



PROJECT: 1706ANAY.003

HOUSTON, TX  
MISSOURI CITY TO CABRERA RD

CLARIFICATION NO.	QUANTITY
PLACE HANDHOLE	3
PROP. 1-2" HDPE	558'
PULL 1-144F CABLE	783'
PLACE 6M STRAND	182'
LASH 1-144F CABLE	157'
DOWN GUY & ANCHOR	1
RISER: 2" U GUARD	1
PLACE MARKER	3


McImetro  
ACCESS TRANSMISSION SERVICES  
CORPORATION

OUTSIDE PLANT CONSTRUCTION

TITLE: FIBER OPTIC ROUTE  
MISSOURI CITY TO CABRERA RD  
HOUSTON, TX

DATE: 8/21/18

ENGINEER: L. STALCUP

DRAWN BY: G.F.S. (JCV)

REVISIONS			
No.	DATE	DESCRIPTION	BY

EXCEPT AS MAY BE OTHERWISE PROVIDED BY CONTRACT, THESE DRAWINGS AND SPECIFICATIONS SHALL REMAIN THE PROPERTY OF MCI COMMUNICATIONS SERVICES INC. BOTH BEING ISSUED IN STRICT CONFIDENCE AND SHALL NOT BE REPRODUCED, COPIED, OR USED FOR ANY PURPOSE WITHOUT SPECIFIC WRITTEN PERMISSION.

SCALE

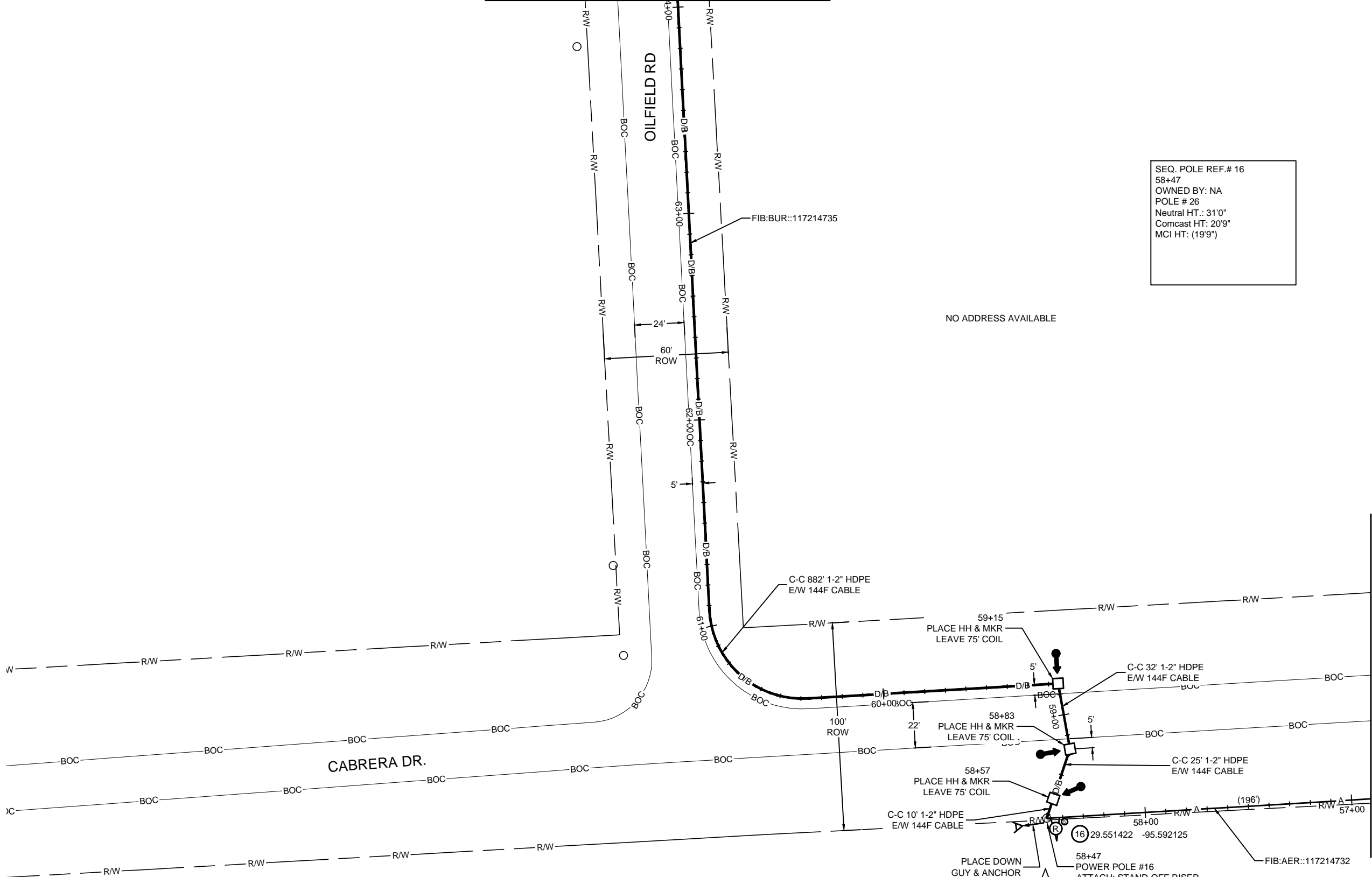
HORIZONTAL: 1"= 50'

VERTICAL: 1"= N/A

MP \_\_\_\_\_ TO MP \_\_\_\_\_

SHEET 17 OF 18

FILE: ECC-FBRBLD01017AC.LIN



UNDERGROUND UTILITIES HAVE BEEN PLOTTED FROM AVAILABLE RECORDS AND FIELD OBSERVATIONS BUT ARE NOT NECESSARILY EXACT. IT IS THE CONTRACTORS RESPONSIBILITY TO FIELD LOCATE ALL UNDERGROUND OBSTRUCTIONS AND UTILITIES PRIOR TO CONSTRUCTION. COMPLETE REPAIR OF ANY AND ALL DAMAGES INCURRED SHALL BE AT THE EXPENSE OF THE CONTRACTOR.

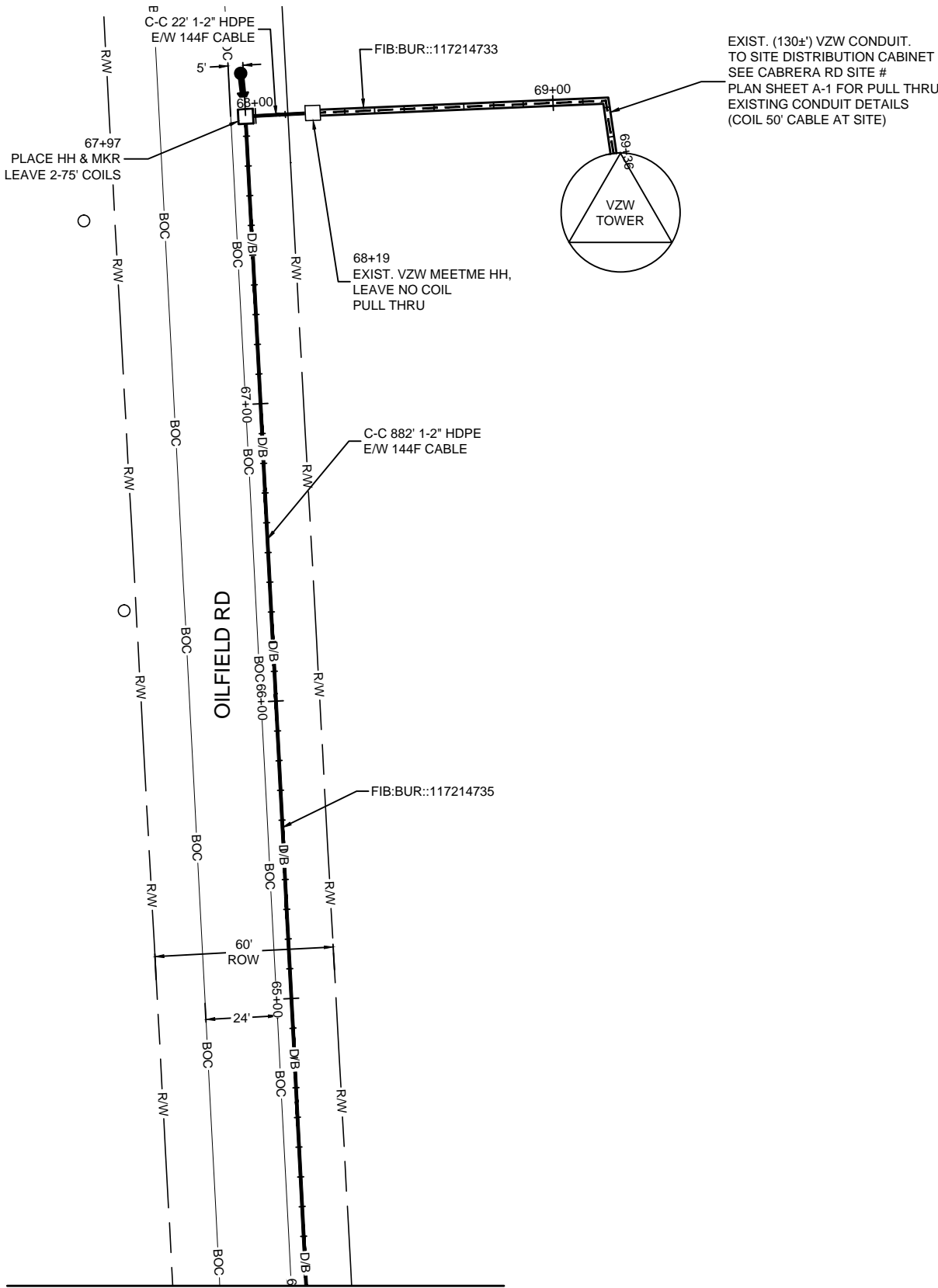
RIGHT OF WAY LINES WERE ESTABLISHED BY RESEARCH OF PUBLIC INFORMATION. NO BOUNDARY SURVEY OR PROPERTY LINE SURVEY WAS ESTABLISHED BY GOLDEN FIELD SERVICES, INC.. RIGHT OF WAY BOUNDARY MUST BE FIELD VERIFIED BY A REGISTERED PROFESSIONAL LAND SURVEYOR TO ACCURATELY VERIFY RIGHT OF WAY AND PROPERTY LINES PRIOR TO CONSTRUCTION.

!!! CAUTION !!!  
PIPELINE SERVICE LINES  
THRU THIS AREA HAVE NOT BEEN  
IDENTIFIED NOR INDICATED.



CALL BEFORE YOU DIG  
1-800-545-6005  
48 HOURS NOTICE REQUIRED

HOUSTON, TX  
HARRIS COUNTY



EXIST. (130±') VZW CONDUIT.  
TO SITE DISTRIBUTION CABINET  
SEE CABRERA RD SITE #  
PLAN SHEET A-1 FOR PULL THRU  
EXISTING CONDUIT DETAILS  
(COIL 50' CABLE AT SITE)

PROJECT: 1706ANAY.003

HOUSTON, TX  
MISSOURI CITY TO CABRERA RD

CLARIFICATION NO.	QUANTITY
PLACE HANDHOLE	1
PROP. 1-2" HDPE	414'
PULL 1-144F CABLE	744'
PLACE MARKER	1

McImetro  
ACCESS TRANSMISSION SERVICES  
CORPORATION

OUTSIDE PLANT CONSTRUCTION

TITLE: FIBER OPTIC ROUTE  
MISSOURI CITY TO CABRERA RD  
HOUSTON, TX

DATE: 8/21/18

ENGINEER: L. STALCUP

DRAWN BY: G.F.S. (JCV)

REVISIONS			
No.	DATE	DESCRIPTION	BY

EXCEPT AS MAY BE OTHERWISE PROVIDED BY  
CONTRACT, THESE DRAWINGS AND SPECIFICATIONS  
SHALL REMAIN THE PROPERTY OF MCI  
COMMUNICATIONS SERVICES INC. BOTH BEING  
ISSUED IN STRICT CONFIDENCE AND SHALL NOT BE  
REPRODUCED, COPIED, OR USED FOR ANY  
PURPOSE WITHOUT SPECIFIC WRITTEN PERMISSION.

SCALE

HORIZONTAL: 1"= 50'

VERTICAL: 1"= N/A

MP \_\_\_\_\_ TO MP \_\_\_\_\_

SHEET 18 OF 18

FILE: ECC-FBRBLD01018AC.LIN

!!! CAUTION !!!  
PIPELINE SERVICE LINES  
THRU THIS AREA HAVE NOT BEEN  
IDENTIFIED NOR INDICATED.

UNDERGROUND UTILITIES HAVE BEEN PLOTTED FROM AVAILABLE RECORDS AND  
FIELD OBSERVATIONS BUT ARE NOT NECESSARILY EXACT. IT IS THE CONTRACTORS  
RESPONSIBILITY TO FIELD LOCATE ALL UNDERGROUND OBSTRUCTIONS AND  
UTILITIES PRIOR TO CONSTRUCTION. COMPLETE REPAIR OF ANY AND ALL  
DAMAGES INCURRED SHALL BE AT THE EXPENSE OF THE CONTRACTOR.

RIGHT OF WAY LINES WERE ESTABLISHED BY RESEARCH OF PUBLIC INFORMATION.  
NO BOUNDARY SURVEY OR PROPERTY LINE SURVEY WAS ESTABLISHED BY  
GOLDEN FIELD SERVICES, INC.. RIGHT OF WAY BOUNDARY MUST BE FIELD VERIFIED  
BY A REGISTERED PROFESSIONAL LAND SURVEYOR TO ACCURATELY VERIFY  
RIGHT OF WAY AND PROPERTY LINES PRIOR TO CONSTRUCTION.



CALL BEFORE YOU DIG  
1-800-545-6005  
48 HOURS NOTICE REQUIRED

## Velasquez, Courtney

---

**From:** Slawinski, Stacy  
**Sent:** Thursday, August 30, 2018 4:56 PM  
**To:** Velasquez, Courtney  
**Cc:** Peterson, Jillian; Eglinton, Sean  
**Subject:** RE: Permit 2018-23058

The City of Sugar Land is managing the mobility project, so they will need to review the permit application. Let me know if you have any questions.

Thanks,

**Stacy Slawinski**

[stacy.slawinski@fortbendcountytexas.gov](mailto:stacy.slawinski@fortbendcountytexas.gov)

281-633-7508 office

---

**From:** Velasquez, Courtney  
**Sent:** Thursday, August 30, 2018 11:50 AM  
**To:** Slawinski, Stacy <[Stacy.Slawinski@fortbendcountytexas.gov](mailto:Stacy.Slawinski@fortbendcountytexas.gov)>  
**Cc:** Peterson, Jillian <[Jillian.Peterson@fortbendcountytexas.gov](mailto:Jillian.Peterson@fortbendcountytexas.gov)>; Eglinton, Sean <[Sean.Eglinton@fortbendcountytexas.gov](mailto:Sean.Eglinton@fortbendcountytexas.gov)>  
**Subject:** Permit 2018-23058

Stacy can you please look at this Permit for me, it involves a 2013 mobility project.

MCI –“ Proposed buried and aerial fiber optic cable installation entering FTBC ROW on the Northeast corner of S. University Blvd and Lake Riverstone Dr. then continue west to the Northeast corner of S. University Blvd and LJ Pkwy then continue North to the Sou”



Thank you,

Plat submittal deadline for the September 11<sup>th</sup> Commissioners Court agenda is Thursday, August 30<sup>th</sup> by 5pm.

**Courtney Velasquez**

**Clerk III**

**Fort Bend County Engineering**

301 Jackson St., Suite 401 | Richmond, TX 77469

Email: [Courtney.Velasquez@fortbendcountytx.gov](mailto:Courtney.Velasquez@fortbendcountytx.gov)

Phone: 281-633-7516

## Velasquez, Courtney

---

**From:** Brad Creekmore <brad.creekmore@yahoo.com>  
**Sent:** Tuesday, October 23, 2018 5:12 PM  
**To:** Velasquez, Courtney  
**Subject:** Re: Permit 2018-23058

CAUTION: This email originated from outside of the organization. Do not click links or open attachments unless you recognize the sender and know the content is safe.

I approve please proceed.

Sent from my iPhone

On Oct 23, 2018, at 3:01 PM, Velasquez, Courtney <[Courtney.Velasquez@fortbendcountytexas.gov](mailto:Courtney.Velasquez@fortbendcountytexas.gov)> wrote:

Brad this is the one that all I need is the reply email stating something to this effect:  
"we understand that you are approving this application for the FBC area only. We have applied for the permits/approval from the City of Sugar Land."

**From:** Velasquez, Courtney  
**Sent:** Friday, August 31, 2018 10:57 AM  
**To:** [marcus.armijo@verizon.com](mailto:marcus.armijo@verizon.com); 'k creekmore@goldenfieldservices.com' <[k creekmore@goldenfieldservices.com](mailto:k creekmore@goldenfieldservices.com)>; Warren Hardy ([warren.hardy@ervincable.com](mailto:warren.hardy@ervincable.com)) <[warren.hardy@ervincable.com](mailto:warren.hardy@ervincable.com)>  
**Cc:** Slawinski, Stacy <[Stacy.Slawinski@fortbendcountytexas.gov](mailto:Stacy.Slawinski@fortbendcountytexas.gov)>; Peterson, Jillian <[Jillian.Peterson@fortbendcountytexas.gov](mailto:Jillian.Peterson@fortbendcountytexas.gov)>; Eglinton, Sean <[Sean.Eglinton@fortbendcountytexas.gov](mailto:Sean.Eglinton@fortbendcountytexas.gov)>  
**Subject:** Permit 2018-23058

Hello gentlemen,

I am reviewing the above referenced permit application and I have 2 issues that need to be addressed.

1. The section on your site plan (pages 15-18) are inside the City of Sugar Land. (below in tan is the city limits) Which is your section 15,16,17,18 (see below)
2. As you see on the first map the yellow line indicates a mobility project. I sent this to our Mobility Engineer and his comments are that this mobility project is being managed by the City of Sugar Land.

<image001.jpg><image002.png>

As we have discussed on previous occasions. Because this section is included in the site map we can't process this permit until you have the permit from The City of Sugar Land anyway.  
The information I have included about the mobility in the area was just to make sure you were aware of it (which you may already be)

Of course you can send me a modified site plan that excludes pages 15-18 which is in the city of sugar land or you can send a snip it with the new map example below. And we can process this permit. Otherwise let me know when you get the permit from Sugar Land.

<image003.png>



Plat submittal deadline for the September 11<sup>th</sup> Commissioners Court agenda is Thursday, August 30<sup>th</sup> by 5pm.

**Courtney Velasquez**

**Clerk III**

**Fort Bend County Engineering**

301 Jackson St., Suite 401 | Richmond, TX 77469

Email: [Courtney.Velasquez@fortbendcountytx.gov](mailto:Courtney.Velasquez@fortbendcountytx.gov)

Phone: 281-633-7516