

## STANDARD UTILITY AGREEMENT

U-0035: **CyrusOne**  
 County: Fort Bend  
 Highway: FM 1093 Westpark Extension Phase II

This Agreement by and between the County of Fort Bend, Texas, ("**County**"), and CyrusOne, ("**Utility**"), acting by and through its duly authorized representative, shall be effective on the date of approval and execution by and on behalf of the **County**.

**WHEREAS**, the **County** has deemed it necessary to make certain highway improvements as designated by the **County** and approved by the Federal Highway Administration within the limits of the highway as indicated above;

**WHEREAS**, the proposed highway improvements will necessitate the adjustment, removal, and/or relocation of certain facilities of **Utility** as indicated in the following statement of work: Relocation of assets into a predesignated corridor according to the following schedule:

Start Date – April 2, 2018  
 Completion Date – May 31, 2018

and more specifically shown in **Utility's** Plans and Specifications, Estimated Costs, and Schedule which are attached hereto as Exhibits "A," "B" and "C."

**WHEREAS**, Subchapter E of Chapter 203 of the Texas Transportation Code regarding the relocation of utilities does not apply to this Project, but the County wishes to negotiate in good faith and enter into agreements with all affected utility companies for the participation in the costs of the adjustment, removal, and/or relocation of certain facilities as authorized under such subchapter.

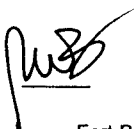
**WHEREAS**, the **County**, upon receipt of evidence it deems sufficient, acknowledges **Utility's** interest in certain lands and/or facilities and determined it is appropriate to enter an agreement with **Utility** to govern the terms for participation in the costs of the adjustment, removal, and relocation of certain of its facilities located upon the lands as indicated in the statement of work above.


### NOW, THEREFORE, BE IT AGREED:

The **County** will pay to **Utility** fifty percent (50%) of the documented actual costs incurred for relocation of the utility in adjustment, removal, and/or relocation of **Utility's** facilities up to the amount said costs may be eligible for **County** participation.

All conduct under this agreement, including but not limited to the adjustment, removal and relocation of the facility, the development and reimbursement of costs, any environmental requirements, and retention of records will be in accordance with all applicable federal and state laws, rules and regulations, including, without limitation, the Federal Uniform Relocation Assistance and Real Property Acquisition Policies Act, 42 U.S.C. §§ 4601, et seq., the National Environmental Policy Act, 42 U.S.C. §§ 4231, et seq., the Buy America provisions of 23 U.S.C. § 313 and 23 CFR 635.410, the Utility Relocations, Adjustments, and Reimbursements provisions of 23 CFR 645, Subpart A, and with the Utility Accommodation provisions of 23 CFR 645, Subpart B. **Utility** shall supply, upon request by the **County**, proof of compliance with the aforementioned laws, rules and regulations prior to the commencement of construction.

The **Utility** agrees to develop relocation or adjustment costs by accumulating actual direct and related indirect costs in accordance with a work order accounting procedure prescribed by **County**, or may, with the **County's** approval, accumulate actual direct and related indirect costs in accordance with an established accounting procedure developed by **Utility**. Bills for work hereunder will be submitted to **County** not later than 90 days after completion of the work.

  
 \_\_\_\_\_  
 Date  
 Fort Bend County

  
 \_\_\_\_\_  
 Initial  
 \_\_\_\_\_  
 Date  
 CyrusOne

When requested, the **County** will make intermediate payments at not less than monthly intervals to **Utility** when properly billed and such payments will not exceed 90 percent (90%) of the eligible cost as shown in each such billing. Intermediate payments shall not be construed as final payment for any items included in the intermediate payment.

Upon execution of this agreement by both parties hereto, the **County** will, by written notice, authorize the **Utility** to perform such work diligently, and to conclude said adjustment, removal, or relocation by the stated completion date. The completion date shall be extended for delays caused by events outside **Utility's** control, including an event of Force Majeure, which shall include a strike, war or act of war (whether an actual declaration of war is made or not), insurrection, riot, act of public enemy, accident, fire, flood or other act of God, sabotage, or other events, interference by the **County** or any other party with **Utility's** ability to proceed with the relocation, or any other event in which **Utility** has exercised all due care in the prevention thereof so that the causes or other events are beyond the control and without the fault or negligence of **Utility**.

However, for any failure by **Utility** to conclude said adjustment, removal, or relocation by the stated completion date not caused by events outside **Utility's** control, the **County** may elect to: (1) reduce the reimbursement to **Utility** by one percent (1%) each day delayed; or (2) relocate the facility at the sole cost and expense of **Utility**.

The **County** will, upon satisfactory completion of the relocation or adjustment and upon receipt of final billing prepared in an approved form and manner, make payment in the amount of 90 percent (90%) of the eligible costs as shown in the final billing prior to audit and after such audit shall make an additional final payment totaling the reimbursement amount found eligible for **County** reimbursement.

Unless an item below is stricken and initialed by the **County** and **Utility**, this agreement in its entirety consists of the following:

1. Standard Utility Agreement;
2. Plans & Specifications (Attachment "A");
3. Utility Construction Cost Estimate (Attachment "B");
4. Utility's Schedule of Work and Estimated Date of Completion (Attachment "C").

All attachments are included herein as if fully set forth. In the event it is determined that a substantial change from the statement of work contained in this agreement is required, reimbursement therefore shall be limited to costs covered by a modification or amendment of this agreement or a written change or extra work order approved by the **County and Utility**.

This agreement is subject to cancellation by the **County** at any time up to the date that work under this agreement has been authorized and that such cancellation will not create any liability on the part of the **County**. However, the **County** will review and reimburse the **Utility** for eligible costs incurred by the **Utility** in preparation of this Agreement.

The **Utility** acknowledges to and for the benefit of the **County** and State of Texas that it understands the project under this Agreement is eligible for Federal-aid highway funds and as such, requires all of the iron, steel, and manufactured goods used in the project be produced in the United States ("Buy American Requirements") including iron, steel, and manufactured goods provided by the **Utility** pursuant to this Agreement.

The State Auditor may conduct an audit or investigation of any entity receiving funds from the **County** directly under this contract or indirectly through a subcontract under this contract. Acceptance of funds directly under this contract or indirectly through a subcontract under this contract acts as acceptance of the authority of the State Auditor, under the direction of the Legislative Audit Committee, to conduct an audit or investigation in connection with those funds. An entity that is the subject of an audit or investigation must provide the state auditor with access to any information the state auditor considers relevant to the investigation or audit.

The **Utility** by execution of this agreement does not waive any of the rights which **Utility** may have within the limits of the law.

 9/17/18  
Date  
Fort Bend County

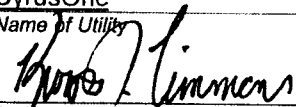
KT 7/25/18  
Initial Date  
CyrusOne

It is expressly understood that the **Utility** conducts the adjustment, removal, or relocation at its own risk, and that Fort Bend County, Texas makes no warranties or representations regarding the existence or location of utilities currently within its right of way.

The signatories to this agreement warrant that each has the authority to enter into this agreement on behalf of the party represented.

**UTILITY**

Utility: CyrusOne  
Name of Utility

By:   
Authorized Signature

Kevin Timmons  
Print or Type Name

Title: CTO

Date: 7/25/18

 9/17/18  
Date  
Fort Bend County

KT 7/25/18  
Initial Date  
CyrusOne

**EXECUTION RECOMMENDED:**

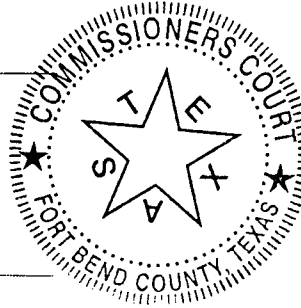
COUNTY

By:

*Robert E. Hebert*  
Robert E. Hebert, County Judge

Date:

9-25-2018



**ATTEST:**

By:

*Laura Richard*  
Laura Richard, County Clerk

**APPROVED:**

By:

*Richard W. Stolleis*  
Richard W. Stolleis, P.E., County Engineer

**APPROVED AS TO LEGAL FORM:**

By:

*Marcus D. Spencer*  
Marcus D. Spencer, First Assistant County Attorney

**AUDITOR'S CERTIFICATE**

I hereby certify that funds are available in the amount of \$ 158,621.42 to accomplish and pay the obligation of Fort Bend County under this contract.

*Robert Ed Sturdivant*

Robert Ed Sturdivant, County Auditor

*[Signature]*  
Date  
9/17/18  
Fort Bend County

*KI*  
Initial  
*7/25/18*  
Date  
CyrusOne

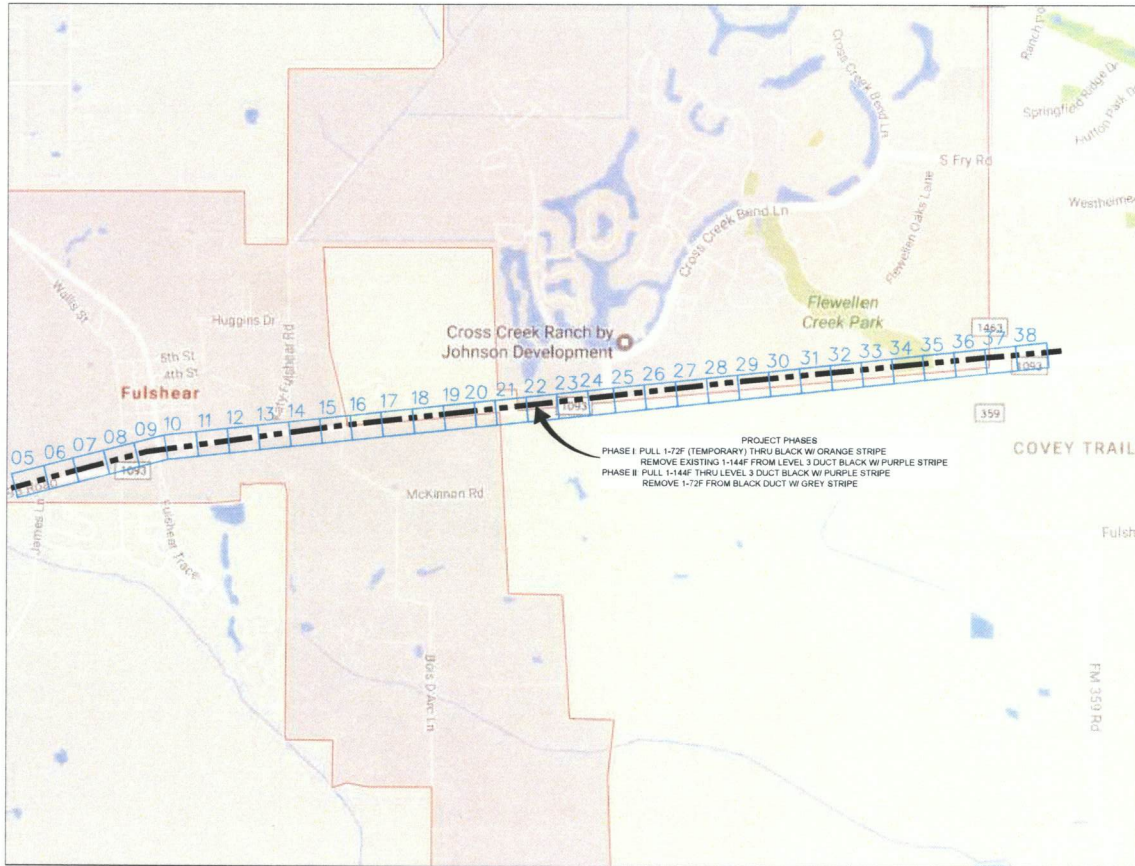
# Exhibit A

## Plans & Specifications

fwc 9/17/18  
Date  
Fort Bend County

KT 7/25/18  
Initial Date  
CyrusOne

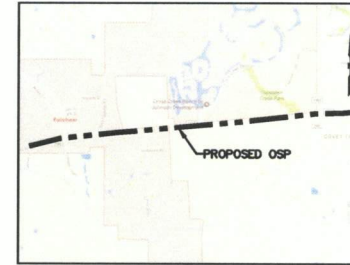
ADDRESS: FM 1093 WESTPARK, FULSHEAR, TX  
 PROJECT NAME: FM 1093 WESTPARK EXTENSION PHASE II



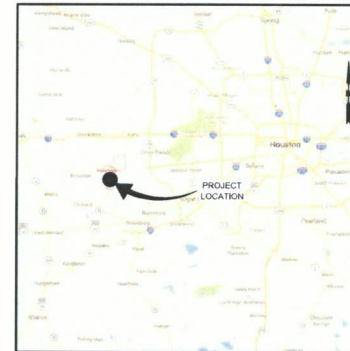
# SITE LOCATION

MAP NOT TO SCALE

PROJECT PHASES  
 PHASE I PULL 1-72F (TEMPORARY) THRU BLACK W/ ORANGE STRIPE  
 REMOVE EXISTING 1-144F FROM LEVEL 3 DUCT BLACK W/ PURPLE STRIPE  
 PHASE II PULL 1-144F THRU LEVEL 3 DUCT BLACK W/ PURPLE STRIPE  
 REMOVE 1-72F FROM BLACK DUCT W/ GREY STRIPE



LOCATION MAP



VICINITY MAP

### CONTACTS

LEVEL (3) COMMUNICATIONS  
 KEITH HALL P: 281-618-3976  
 P: 832-309-5344  
 ENGINEER:  
 GOLDEN FIELD SERVICES, INC.  
 ERIK BAKER P: 903-357-3282

### SITE INDEX

- 1 - COVER SHEET/ SITE LOCATION
- 2 - LEGEND
- 3 - GENERAL NOTES 1
- 4 - GENERAL NOTES 2
- 5-38 - OUTSIDE PLANT CONSTRUCTION
- 39-40 - CONSTRUCTION TYPICALS
- 41 - HAND-HOLE TYPICALS
- 42 - CABLE PULL SCHEMATIC
- 43 - RAKE OFF TABLES

### OSP SCOPE OF WORK:

CONTRACTOR IS TO CAPTURE EXISTING 8-1.5" HDPE & SPLICE INTO EXISTING 144F. PLACE NEW HH FOR LEVEL(3). FIBER LIGHT & CYRUS ONE LEAVING COIL IN NEW LEVEL(3) HH FOR SPLICE. APPROXIMATELY 1.915' WEST OF HARRIS ST. CONTRACTOR IS TO END PROJECT AT EXISTING LEVEL (3) HH & SPLICE INTO EXISTING 1-144F. APPROXIMATELY 60' EAST OF FM 1463

PHASE I: CONTRACTOR IS TO PULL 1-72F (TEMPORARY) THRU BLACK W/ ORANGE STRIPE DUCT. CONTRACTOR IS TO THEN REMOVE EXISTING 1-144F CABLE FROM LEVEL (3) DUCT BLACK W/ PURPLE STRIPE.

PHASE II: CONTRACTOR IS TO PULL 1-144F IN LEVEL (3) DUCT BLACK W/ ORANGE STRIPE. CONTRACTOR IS TO THEN REMOVE EXISTING 1-72F (TEMPORARY) OUT OF BLACK WITH PURPLE STRIPE DUCT.

### PROJECT DESCRIPTION:

CLI CODE:  
 PA NUMBER:  
 ADDRESS:  
 CITY: FULSHEAR  
 STATE: TEXAS  
 ZIP CODE:  
 CUSTOMER/TENANT:  
 AUTHORITY:  
 -SITE CONTACT (NAME):  
 -OFFICE PHONE NUMBER: (NUMBER)  
 ENTRY TYPE:  
 EQUIPMENT TYPE:  
 ROOM:  
 FIBER INSTALLATION: 1-144F

NO.	DATE	ENG	DESIGN	DRAFTING	COMMENT
3					
2	03/7/18	GFS	GFS		REVISION
1	06/28/17	GFS	GFS		CONSTRUCTION



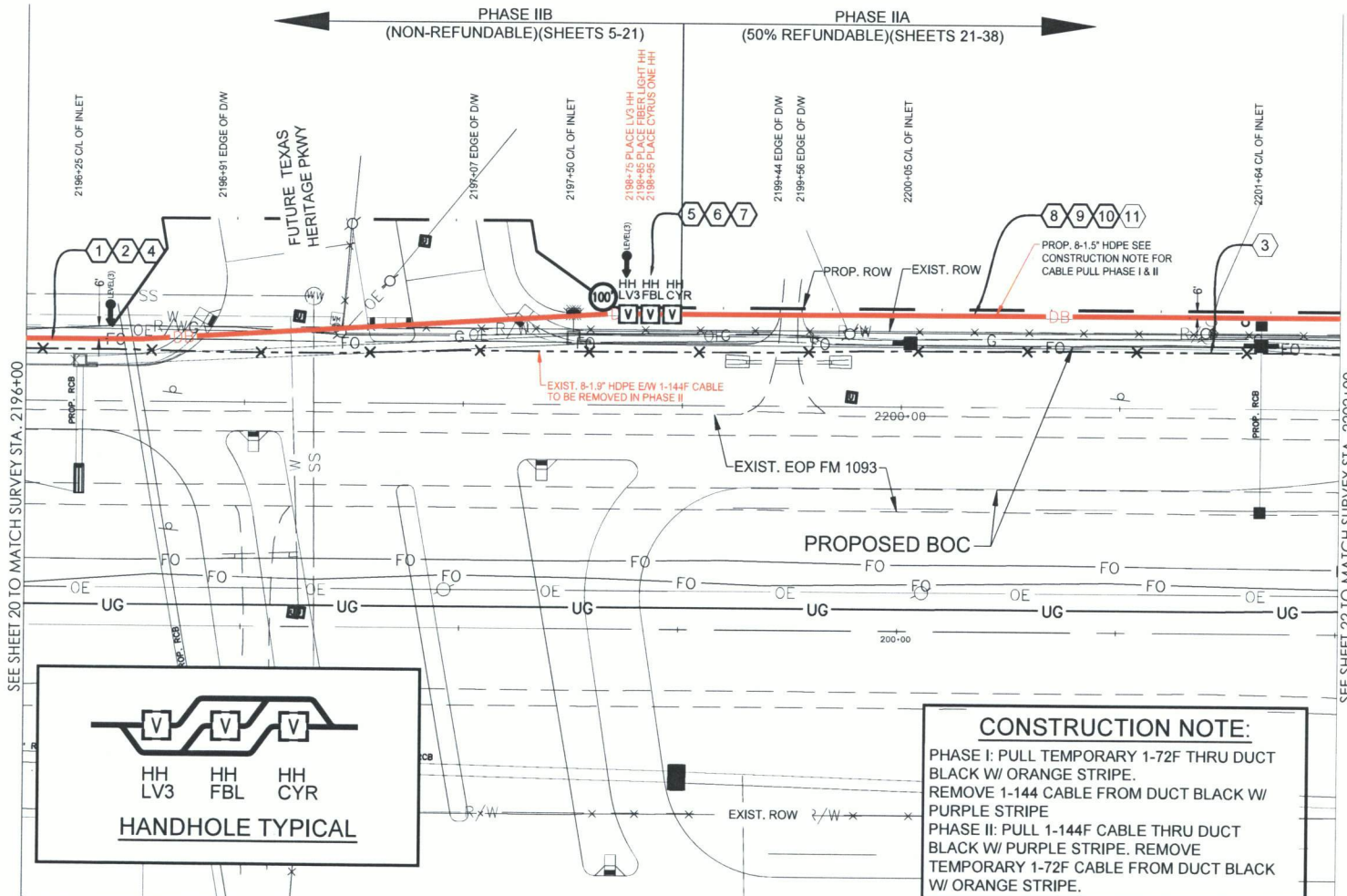
LEVEL 3 ENGINEER: KEITH HALL  
 ENGINEERING FIRM: GOLDEN FIELD SERVICES  
 PROJECT NUMBER: FM 1093 WESTPARK EXTENSION PHASE II  
 LOCATION: FULSHEAR, TX

DRAWING NAME: Level 3 Fulshear, TX FM 1093 Westpark Extension Phase II-17-18.dwg  
 CONFIDENTIAL/PROPRIETARY SHEET: 01 OF 43

FULSHEAR, TX  
FORT BEND COUNTY

PHASE IIB  
(NON-REFUNDABLE)(SHEETS 5-21)

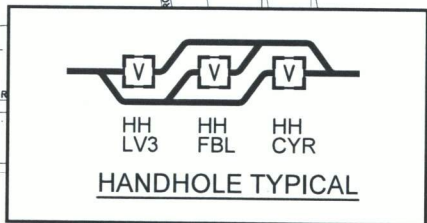
PHASE IIA  
(50% REFUNDABLE)(SHEETS 21-38)



CONSTRUCTION NOTES

- 1 CONDUIT OWNER: LEVEL (3)  
CONDUIT LENGTH: 275'  
CONDUIT QTY: 8  
CONDUIT SIZE: 1.5"  
CONDUIT TYPE: SDR-11 HDPE  
NOTES: DIRECTIONAL BORE 8-1.5" HDPE TO BE E/W  
1-144F LEVEL (3) CABLE
- 2 CABLE FIBERS: 72F  
CABLE OWNER: LEVEL (3)  
CABLE LENGTH: 375'  
NOTES: PULL CABLE IN NEW 1.5" HDPE, LEAVE 100' COIL  
IN PROP. LEVEL (3) HH
- 3 CABLE FIBERS: 144F  
CABLE OWNER: LEVEL (3)  
CABLE LENGTH: 600'  
NOTES: REMOVED EXIST. 144F CABLE FROM EXIST.  
CONDUIT
- 4 CABLE FIBERS: 144F  
CABLE OWNER: LEVEL (3)  
CABLE LENGTH: 375'  
NOTES: PULL CABLE IN NEW 1.5" HDPE, LEAVE 100' COIL  
IN PROP. LEVEL (3) HH
- 5 LEVEL (3) HANDHOLE  
NOTE: LEAVE 100' COIL IN HH
- 6 FIBERLIGHT HANDHOLE  
NOTE:
- 7 CYRUSONE HANDHOLE  
NOTE:
- 8 CONDUIT OWNER: LEVEL (3)  
CONDUIT LENGTH: 325'  
CONDUIT QTY: 8  
CONDUIT SIZE: 1.5"  
CONDUIT TYPE: SDR-11 HDPE  
NOTES: DIRECTIONAL BORE 8-1.5" HDPE TO BE E/W  
1-144F LEVEL (3) CABLE
- 9 CABLE FIBERS: 72F  
CABLE OWNER: LEVEL (3)  
CABLE LENGTH: 325'  
NOTES: PULL CABLE IN NEW 1.5" HDPE
- 10 CABLE FIBERS: 144F  
CABLE OWNER: LEVEL (3)  
CABLE LENGTH: 325'  
NOTES: PULL CABLE IN NEW 1.5" HDPE
- 11 CABLE FIBERS: 72F  
CABLE OWNER: LEVEL (3)  
CABLE LENGTH: 600'  
NOTES: REMOVED EXIST. 72F CABLE FROM EXIST. CONDUIT

**CONSTRUCTION NOTE:**  
PHASE I: PULL TEMPORARY 1-72F THRU DUCT  
BLACK W/ ORANGE STRIPE.  
REMOVE 1-144 CABLE FROM DUCT BLACK W/  
PURPLE STRIPE  
PHASE II: PULL 1-144F CABLE THRU DUCT  
BLACK W/ PURPLE STRIPE. REMOVE  
TEMPORARY 1-72F CABLE FROM DUCT BLACK  
W/ ORANGE STRIPE.



PHASE 2B Page Rate Card

Unit Code & Description	Units	Estimated Quantity	Actual Quantity
UGB-30700 - DIR. BORE GREATER THAN 1500'; ADDITIONAL HDPE CONDUIT UP TO 2" (5 OF 8)	FT	1,375'	-
UGB-30710 - DIR. BORE GREATER THAN 1500'; 3 HDPE CONDUIT UP TO 2" (3 OF 8)	FT	275'	-
UGB-30960 - PLACE UP TO 288 COUNT FOC IN CONDUIT, UP TO 1500'(INCL COILS)	FT	375'	-
UGB-30970 - PLACE UP TO 288 COUNT FOC IN CONDUIT, (EACH ADDITIONAL CABLE)	FT	375'	-
UGB-31060 - REMOVE & DISPOSE OF CABLE	FT	275'	-
UGB-31070 - REMOVE & DISPOSE OF CABLE, EACH ADDITIONAL CABLE	FT	375'	-
UGB-31280 - PLACE NEW 30"X80"X36" NON-CONCRETE MANHOLE/HANDHOLE	EA	3	-
UGB-32000 - PLACE LOCATE TEST STATION	FT	1	-
MAT-90070 - CONDUIT: 1 1/2" HDPE SDR-11	FT	2,200'	-
MAT-90980 - TIER 15 - 30"X60"X36" - WITH KNOCK-OUTS AND RACKING	EA	1	-
MAT-92080 - TEST STATIONS - MARKER POST W/ REMOVABLE TOP	EA	1	-

PHASE 2A Page Rate Card

Unit Code & Description	Units	Estimated Quantity	Actual Quantity
UGB-30700 - DIR. BORE GREATER THAN 1500'; ADDITIONAL HDPE CONDUIT UP TO 2" (5 OF 8)	FT	1,625'	-
UGB-30710 - DIR. BORE GREATER THAN 1500'; 3 HDPE CONDUIT UP TO 2" (3 OF 8)	FT	325'	-
UGB-30960 - PLACE UP TO 288 COUNT FOC IN CONDUIT, UP TO 1500'(INCL COILS)	FT	325'	-
UGB-30970 - PLACE UP TO 288 COUNT FOC IN CONDUIT, (EACH ADDITIONAL CABLE)	FT	325'	-
UGB-31060 - REMOVE & DISPOSE OF CABLE	FT	325'	-
UGB-31070 - REMOVE & DISPOSE OF CABLE, EACH ADDITIONAL CABLE	FT	325'	-
MAT-90070 - CONDUIT: 1 1/2" HDPE SDR-11	FT	2,600'	-



SCALE:  
HORI: 1" = 50'  
VERT: 1" = 10'

SITE PLAN

NO.	DATE	ENG. DESIGN	DRAFTING	CONSTRUCTION	COMMENT
3	03/7/18	GFS	GFS		REVISION
1	06/28/17	GFS	GFS		CONSTRUCTION

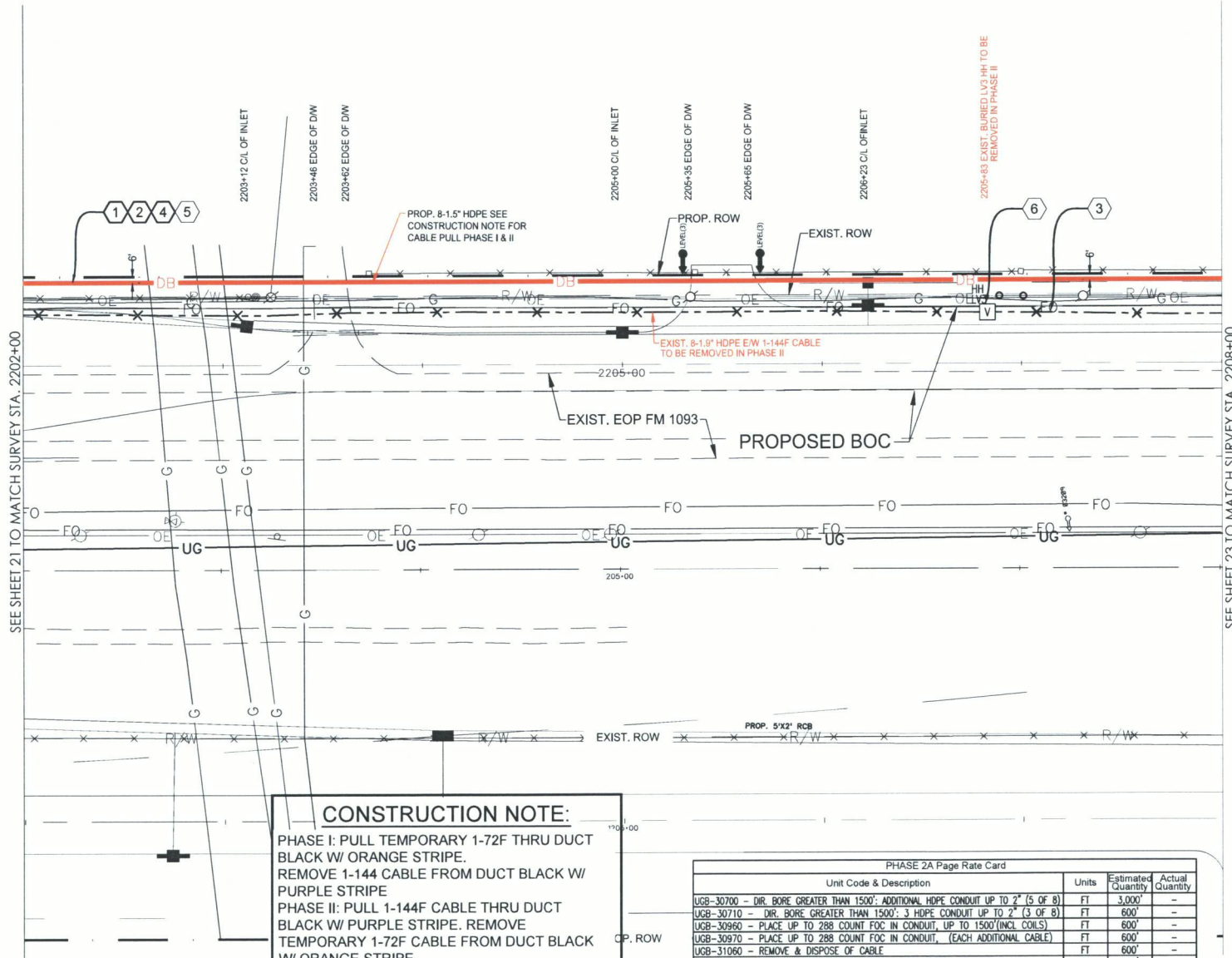
**Level(3)**  
COMMUNICATIONS

LEVEL 3 ENGINEER: KEITH HALL  
ENGINEERING FIRM: GOLDEN FIELD SERVICES  
PROJECT NUMBER: FM 1093 WESTPARK EXTENSION PHASE II  
LOCATION: FULSHEAR, TX

DRAWING NAME: Level 3 Fulshear, TX, FM 1093 Westpark Extension Phase II-1-7-18.dwg  
CONFIDENTIAL/PROPRIETARY SHEET: 21 OF 43

FULSHEAR, TX  
FORT BEND COUNTY

CONSTRUCTION NOTES



- 1 CONDUIT OWNER: LEVEL (3)  
CONDUIT LENGTH: 600'  
CONDUIT QTY: 8  
CONDUIT SIZE: 1.5"  
CONDUIT TYPE: SDR-11 HDPE  
NOTES: DIRECTIONAL BORE 8-1.5" HDPE TO BE E/W 1-144F LEVEL (3) CABLE
- 2 CABLE FIBERS: 72F  
CABLE OWNER: LEVEL (3)  
CABLE LENGTH: 600'  
NOTES: PULL CABLE IN NEW 1.5" HDPE
- 3 CABLE FIBERS: 144F  
CABLE OWNER: LEVEL (3)  
CABLE LENGTH: 600'  
NOTES: REMOVED EXIST. 144F CABLE FROM EXIST. CONDUIT
- 4 CABLE FIBERS: 144F  
CABLE OWNER: LEVEL (3)  
CABLE LENGTH: 600'  
NOTES: PHASE II PULL CABLE IN NEW 1.5" HDPE
- 5 CABLE FIBERS: 72F  
CABLE OWNER: LEVEL (3)  
CABLE LENGTH: 600'  
NOTES: PHASE II REMOVED EXIST. 72F CABLE FROM EXIST. CONDUIT
- 6 EXISTING LEVEL (3) HANDHOLE  
NOTE: PHASE II TO BE REMOVED

SEE SHEET 21 TO MATCH SURVEY STA. 2202+00

SEE SHEET 23 TO MATCH SURVEY STA. 2208+00

**CONSTRUCTION NOTE:**  
PHASE I: PULL TEMPORARY 1-72F THRU DUCT BLACK W/ ORANGE STRIPE. REMOVE 1-144 CABLE FROM DUCT BLACK W/ PURPLE STRIPE  
PHASE II: PULL 1-144F CABLE THRU DUCT BLACK W/ PURPLE STRIPE. REMOVE TEMPORARY 1-72F CABLE FROM DUCT BLACK W/ ORANGE STRIPE.

PHASE 2A Page Rate Card

Unit Code & Description	Units	Estimated Quantity	Actual Quantity
UGB-30700 - DIR. BORE GREATER THAN 1500'. ADDITIONAL HDPE CONDUIT UP TO 2" (5 OF 8)	FT	3,000'	-
UGB-30710 - DIR. BORE GREATER THAN 1500'. 3 HDPE CONDUIT UP TO 2" (3 OF 8)	FT	600'	-
UGB-30960 - PLACE UP TO 288 COUNT FOC IN CONDUIT, UP TO 1500'(INCL COILS)	FT	600'	-
UGB-30970 - PLACE UP TO 288 COUNT FOC IN CONDUIT, (EACH ADDITIONAL CABLE)	FT	600'	-
UGB-31060 - REMOVE & DISPOSE OF CABLE	FT	600'	-
UGB-31070 - REMOVE & DISPOSE OF CABLE, EACH ADDITIONAL CABLE	FT	600'	-
UGB-31360 - REMOVE EXISTING - 30"x60"x36" NON-CONCRETE MANHOLE/HANDHOLE	EA	1	-
MAT-90070 - CONDUIT: 1 1/2" HDPE SDR-11	FT	4800'	-

SITE PLAN

NO.	DATE	ENG	DESIGN	DRAFTING	COMMENT
3					
2	03/7/18	GFS	GFS		REVISION
1	06/28/17	GFS	GFS		CONSTRUCTION



LEVEL 3 ENGINEER: KEITH HALL  
ENGINEERING FIRM: GOLDEN FIELD SERVICES  
PROJECT NUMBER: FM 1093 WESTPARK EXTENSION PHASE II  
LOCATION: FULSHEAR, TX

SCALE:  
HORI: 1" = 50'  
VERT: 1" = 10'

DRAWING NAME: Level 3 Fulshear, TX FM 1093 Westpark Extension Phase II 1-18.dwg  
CONFIDENTIAL/PROPRIETARY SHEET: 22 OF 43

**CONSTRUCTION NOTE:**

PHASE I: PULL TEMPORARY 1-72F THRU DUCT BLACK W/ ORANGE STRIPE.  
REMOVE 1-144F CABLE FROM DUCT BLACK W/ PURPLE STRIPE  
PHASE II: PULL 1-144F CABLE THRU DUCT BLACK W/ PURPLE STRIPE. REMOVE TEMPORARY 1-72F CABLE FROM DUCT BLACK W/ ORANGE STRIPE.

**CONSTRUCTION NOTES**

- ① CONDUIT OWNER: LEVEL (3)  
CONDUIT LENGTH: 600'  
CONDUIT QTY: 8  
CONDUIT SIZE: 1.5"  
CONDUIT TYPE: SDR-11 HDPE  
NOTES: DIRECTIONAL BORE 8-1.5" HDPE TO BE E/W 1-144F LEVEL (3) CABLE
- ② CABLE FIBERS: 72F  
CABLE OWNER: LEVEL (3)  
CABLE LENGTH: 600'  
NOTES: PULL CABLE IN NEW 1.5" HDPE
- ③ CABLE FIBERS: 144F  
CABLE OWNER: LEVEL (3)  
CABLE LENGTH: 600'  
NOTES: REMOVED EXIST. 144F CABLE FROM EXIST. CONDUIT
- ④ CABLE FIBERS: 144F  
CABLE OWNER: LEVEL (3)  
CABLE LENGTH: 600'  
NOTES: PULL CABLE IN NEW 1.5" HDPE
- ⑤ CABLE FIBERS: 72F  
CABLE OWNER: LEVEL (3)  
CABLE LENGTH: 600'  
NOTES: REMOVED EXIST. 72F CABLE FROM EXIST. CONDUIT

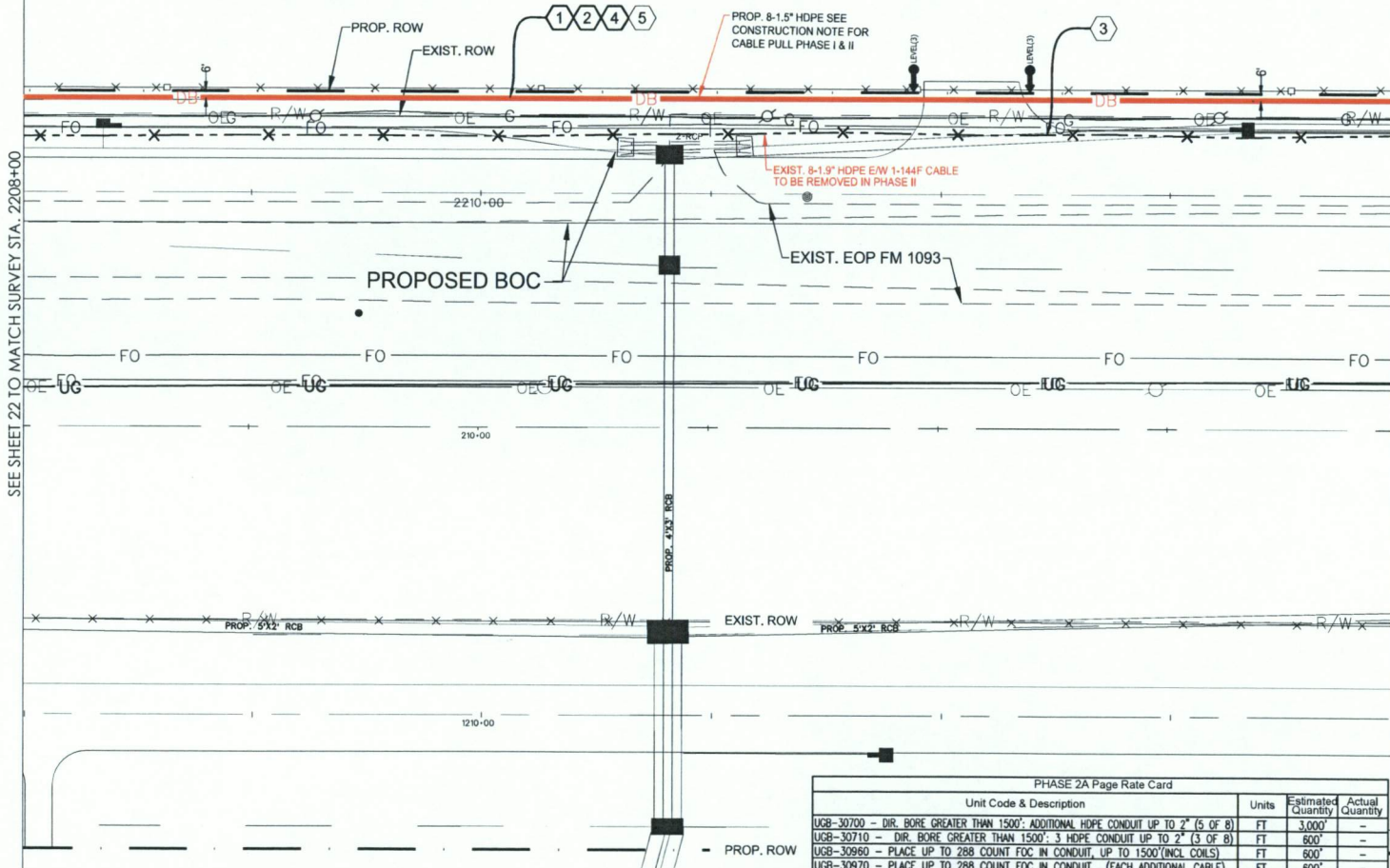
2208+35 CL OF INLET

2210+82 CL OF INLET

2211+83 EDGE OF DW

2212+34 EDGE OF DW

2213+33 CL OF INLET



SEE SHEET 22 TO MATCH SURVEY STA. 2208+00

SEE SHEET 24 TO MATCH SURVEY STA. 2214+00

PHASE 2A Page Rate Card

Unit Code & Description	Units	Estimated Quantity	Actual Quantity
UGB-30700 - DIR. BORE GREATER THAN 1500'. ADDITIONAL HDPE CONDUIT UP TO 2" (5 OF 8)	FT	3,000'	-
UGB-30710 - DIR. BORE GREATER THAN 1500'. 3 HDPE CONDUIT UP TO 2" (3 OF 8)	FT	600'	-
UGB-30960 - PLACE UP TO 288 COUNT FOC IN CONDUIT, UP TO 1500'(INCL COILS)	FT	600'	-
UGB-30970 - PLACE UP TO 288 COUNT FOC IN CONDUIT, (EACH ADDITIONAL CABLE)	FT	600'	-
UGB-31060 - REMOVE & DISPOSE OF CABLE	FT	600'	-
UGB-31070 - REMOVE & DISPOSE OF CABLE, EACH ADDITIONAL CABLE	FT	600'	-
MAT-90070 - CONDUIT: 1 1/2" HDPE SDR-11	FT	4800'	-



SCALE:  
HOR: 1" = 50'  
VERT: 1" = 10'

**SITE PLAN**

NO.	DATE	ENG.	DESIGN	DRAFTING	CONSTRUCTION	COMMENT
3						REVISION
2	03/7/18	GFS		GFS		
1	06/26/17	GFS		GFS		CONSTRUCTION



LEVEL 3 ENGINEER: KEITH HALL  
ENGINEERING FIRM: GOLDEN FIELD SERVICES  
PROJECT NUMBER: FM 1093 WESTPARK EXTENSION PHASE II  
LOCATION: FULSHEAR, TX

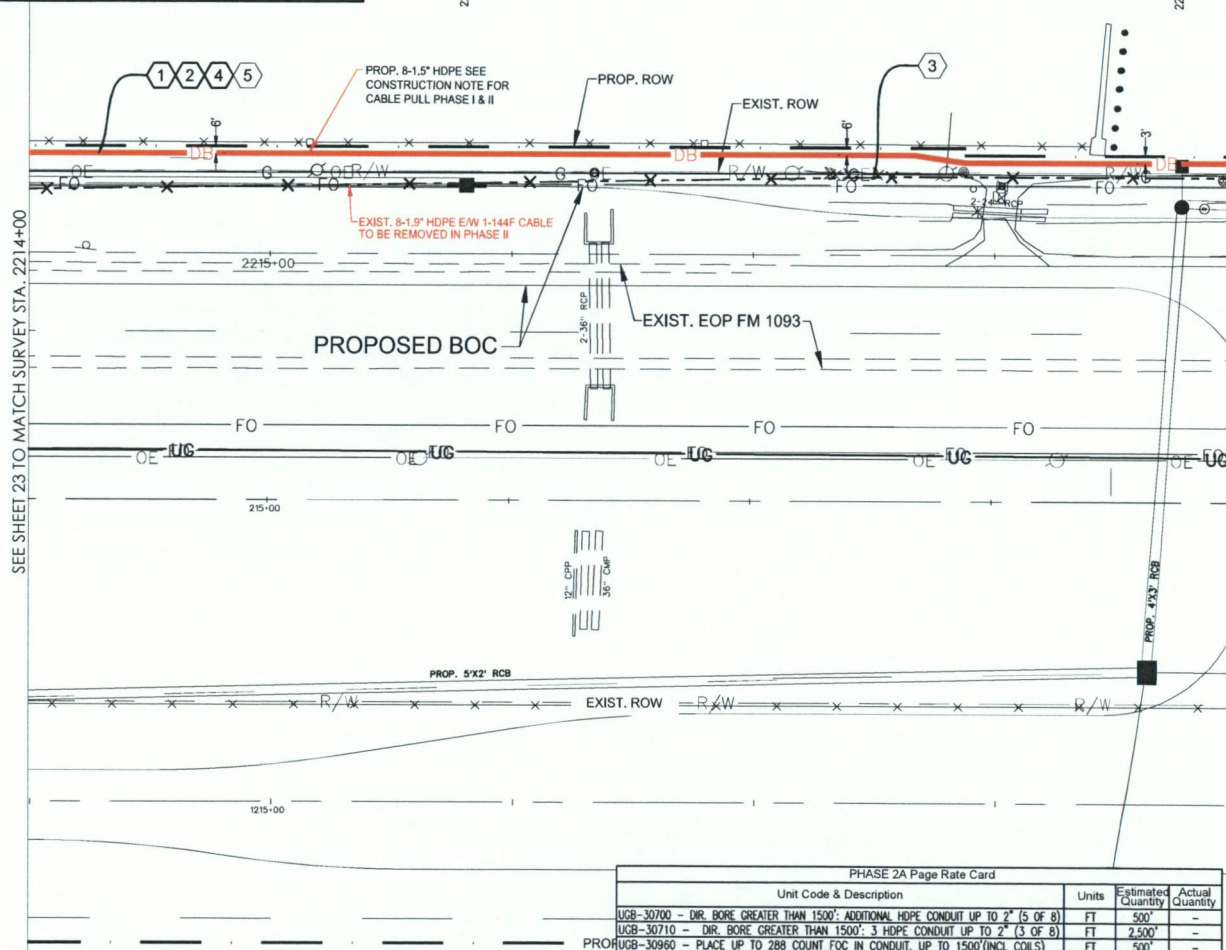
DRAWING NAME: Level 3 Fulshear, TX FM 1093 Westpark Extension Phase II-17-18.dwg  
CONFIDENTIAL/PROPRIETARY

**CONSTRUCTION NOTE:**

PHASE I: PULL TEMPORARY 1-72F THRU DUCT BLACK W/ ORANGE STRIPE.  
REMOVE 1-144 CABLE FROM DUCT BLACK W/ PURPLE STRIPE  
PHASE II: PULL 1-144F CABLE THRU DUCT BLACK W/ PURPLE STRIPE. REMOVE TEMPORARY 1-72F CABLE FROM DUCT BLACK W/ ORANGE STRIPE.

2215+82 CL OF INLET

2218+78 CL OF INLET



SEE SHEET 23 TO MATCH SURVEY STA. 2214+00

SEE SHEET 25 TO MATCH SURVEY STA. 2219+00

**CONSTRUCTION NOTES**

- ① CONDUIT OWNER: LEVEL (3)  
CONDUIT LENGTH: 500'  
CONDUIT QTY: 8  
CONDUIT SIZE: 1.5"  
CONDUIT TYPE: SDR-11 HDPE  
NOTES: DIRECTIONAL BORE 8-1.5" HDPE TO BE E/W 1-144F LEVEL (3) CABLE
- ② CABLE FIBERS: 72F  
CABLE OWNER: LEVEL (3)  
CABLE LENGTH: 500'  
NOTES: PULL CABLE IN NEW 1.5" HDPE
- ③ CABLE FIBERS: 144F  
CABLE OWNER: LEVEL (3)  
CABLE LENGTH: 500'  
NOTES: REMOVED EXIST. 144F CABLE FROM EXIST. CONDUIT
- ④ CABLE FIBERS: 144F  
CABLE OWNER: LEVEL (3)  
CABLE LENGTH: 500'  
NOTES: PULL CABLE IN NEW 1.5" HDPE
- ⑤ CABLE FIBERS: 72F  
CABLE OWNER: LEVEL (3)  
CABLE LENGTH: 500'  
NOTES: REMOVED EXIST. 72F CABLE FROM EXIST. CONDUIT

**SITE PLAN**

3				
2	03/7/18	GFS	GFS	REVISION
1	06/28/17	GFS	GFS	CONSTRUCTION
NO.	DATE	ENG DESIGN	DRAFTING	COMMENT



LEVEL 3 ENGINEER: KEITH HALL  
ENGINEERING FIRM: GOLDEN FIELD SERVICES  
PROJECT NUMBER: FM 1093 WESTPARK EXTENSION PHASE II  
LOCATION: FULSHEAR, TX

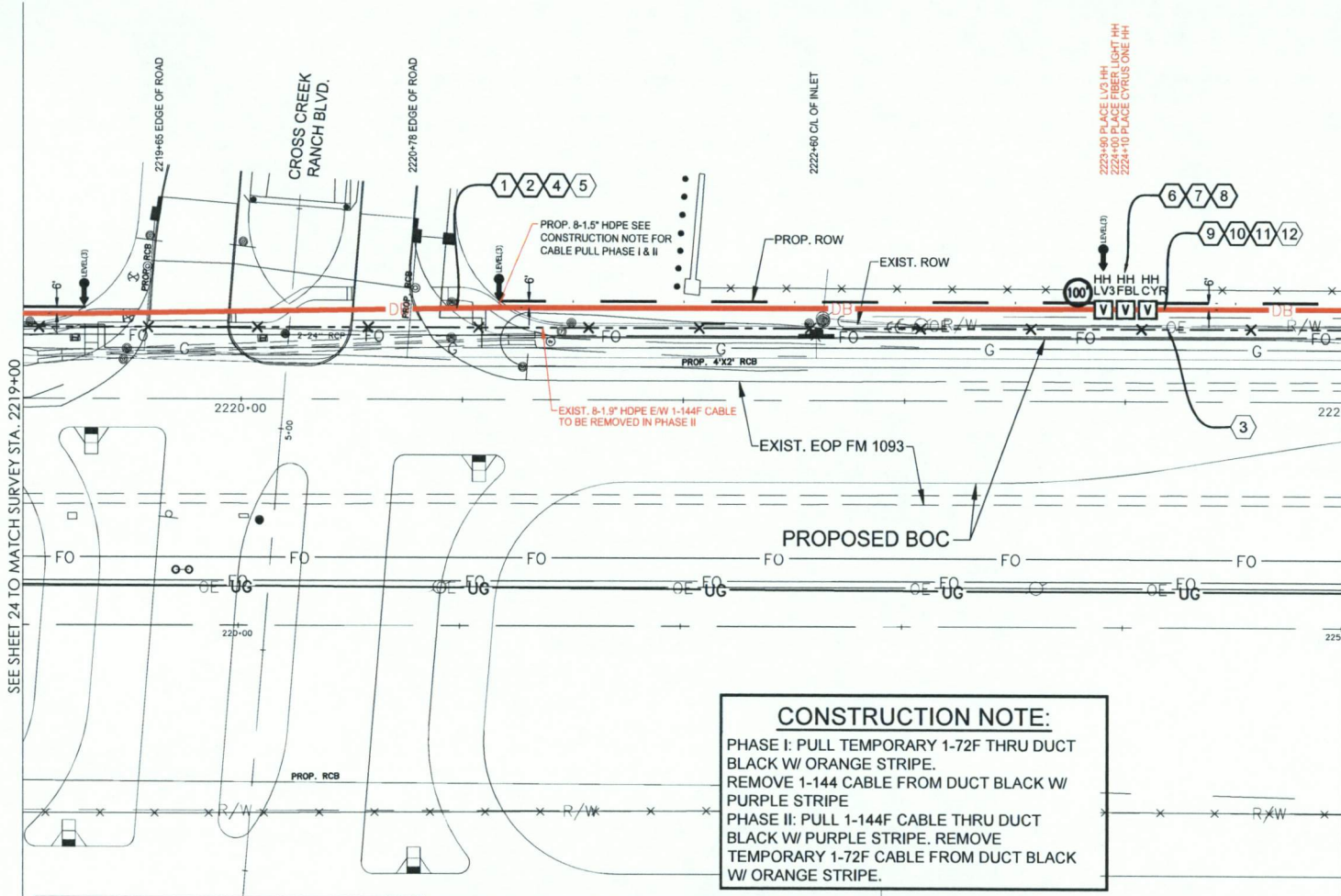
DRAWING NAME: Level 3 Fulshear, TX FM 1093 Westpark Extension Phase II-17-18.dwg  
CONFIDENTIAL/PROPRIETARY

PHASE 2A Page Rate Card

Unit Code & Description	Units	Estimated Quantity	Actual Quantity
UCB-30700 - DIR. BORE GREATER THAN 1500'. ADDITIONAL HDPE CONDUIT UP TO 2" (5 OF 8)	FT	500'	-
UCB-30710 - DIR. BORE GREATER THAN 1500'. 3 HDPE CONDUIT UP TO 2" (3 OF 8)	FT	2,500'	-
UCB-30960 - PLACE UP TO 288 COUNT FOC IN CONDUIT, UP TO 1500'(INCL COILS)	FT	500'	-
UCB-30970 - PLACE UP TO 288 COUNT FOC IN CONDUIT, (EACH ADDITIONAL CABLE)	FT	500'	-
UCB-31060 - REMOVE & DISPOSE OF CABLE	FT	500'	-
UCB-31070 - REMOVE & DISPOSE OF CABLE, EACH ADDITIONAL CABLE	FT	500'	-
MAT-90070 - CONDUIT: 1 1/2" HDPE SDR-11	FT	4000'	-



SCALE:  
HORI: 1" = 50'  
VERT: 1" = 10'

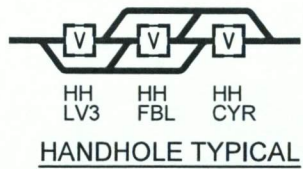


- 1 CONDUIT OWNER: LEVEL (3)  
CONDUIT LENGTH: 490'  
CONDUIT QTY: 8  
CONDUIT SIZE: 1.5"  
CONDUIT TYPE: SDR-11 HDPE  
NOTES: DIRECTIONAL BORE 8-1.5" HDPE TO BE E/W 1-144F LEVEL (3) CABLE
- 2 CABLE FIBERS: 72F  
CABLE OWNER: LEVEL (3)  
CABLE LENGTH: 590'  
NOTES: PULL CABLE IN NEW 1.5" HDPE W/ 100' COIL IN LEVEL 3 H.H.
- 3 CABLE FIBERS: 144F  
CABLE OWNER: LEVEL (3)  
CABLE LENGTH: 600'  
NOTES: REMOVED EXIST. 144F CABLE FROM EXIST. CONDUIT
- 4 CABLE FIBERS: 144F  
CABLE OWNER: LEVEL (3)  
CABLE LENGTH: 590'  
NOTES: PHASE II PULL CABLE IN NEW 1.5" HDPE W/ 100' IN LEVEL 3 H.H.
- 5 CABLE FIBERS: 72F  
CABLE OWNER: LEVEL (3)  
CABLE LENGTH: 590'  
NOTES: PHASE II REMOVED EXIST. 72F CABLE FROM EXIST. CONDUIT
- 6 LEVEL (3) HANDHOLE  
NOTE: LEAVE 100' COIL IN HH
- 7 FIBERLIGHT HANDHOLE  
NOTE:
- 8 CYRUSONE HANDHOLE  
NOTE:
- 9 CONDUIT OWNER: LEVEL (3)  
CONDUIT LENGTH: 110'  
CONDUIT QTY: 8  
CONDUIT SIZE: 1.5"  
CONDUIT TYPE: SDR-11 HDPE  
NOTES: DIRECTIONAL BORE 8-1.5" HDPE TO BE E/W 1-144F LEVEL (3) CABLE
- 10 CABLE FIBERS: 72F  
CABLE OWNER: LEVEL (3)  
CABLE LENGTH: 110'  
NOTES: PULL CABLE IN NEW 1.5" HDPE
- 11 CABLE FIBERS: 144F  
CABLE OWNER: LEVEL (3)  
CABLE LENGTH: 110'  
NOTES: PULL CABLE IN NEW 1.5" HDPE
- 12 CABLE FIBERS: 72F  
CABLE OWNER: LEVEL (3)  
CABLE LENGTH: 110'  
NOTES: REMOVED EXIST. 72F CABLE FROM EXIST. CONDUIT

**CONSTRUCTION NOTE:**  
PHASE I: PULL TEMPORARY 1-72F THRU DUCT BLACK W/ ORANGE STRIPE. REMOVE 1-144 CABLE FROM DUCT BLACK W/ PURPLE STRIPE  
PHASE II: PULL 1-144F CABLE THRU DUCT BLACK W/ PURPLE STRIPE. REMOVE TEMPORARY 1-72F CABLE FROM DUCT BLACK W/ ORANGE STRIPE.

SEE SHEET 24 TO MATCH SURVEY STA. 2219+00

SEE SHEET 26 TO MATCH SURVEY STA. 2225+00



PHASE 2A Page Rate Card

Unit Code & Description	Units	Estimated Quantity	Actual Quantity
UGB-30700 - DIR. BORE GREATER THAN 1500': ADDITIONAL HDPE CONDUIT UP TO 2" (5 OF 8)	FT	3,000'	-
UGB-30710 - DIR. BORE GREATER THAN 1500': 3 HDPE CONDUIT UP TO 2" (3 OF 8)	FT	600'	-
UGB-30950 - PLACE UP TO 288 COUNT FOC IN CONDUIT, UP TO 1500'(INCL. COILS)	FT	700'	-
UGB-30970 - PLACE UP TO 288 COUNT FOC IN CONDUIT, (EACH ADDITIONAL CABLE)	FT	700'	-
UGB-31060 - REMOVE & DISPOSE OF CABLE	FT	800'	-
UGB-31070 - REMOVE & DISPOSE OF CABLE, EACH ADDITIONAL CABLE	FT	700'	-
UGB-31280 - PLACE NEW 30"x60"x36" NON-CONCRETE MANHOLE/HANDHOLE	EA	3	-
UGB-32000 - PLACE LOCATE TEST STATION	EA	3	-
MAT-90070 - CONDUIT: 1 1/2" HDPE SDR-11	FT	4800'	-
MAT-90980 - TIER 15 - 30"x60"x36" - WITH KNOCK-OUTS AND RACKING	EA	1	-
MAT-92080 - TEST STATIONS - MARKER POST W/ REMOVABLE TOP	EA	1	-



SCALE:  
HOR: 1" = 50'  
VERT: 1" = 10'

**SITE PLAN**

3				
2	03/7/18	GFS	GFS	REVISION
1	06/28/17	GFS	GFS	CONSTRUCTION
NO.	DATE	ENG DESIGN	DRAFTING	COMMENT

**Level(3)**  
COMMUNICATIONS

LEVEL 3 ENGINEER: KEITH HALL  
ENGINEERING FIRM: GOLDEN FIELD SERVICES  
PROJECT NUMBER: FM 1093 WESTPARK EXTENSION PHASE II  
LOCATION: FULSHEAR, TX

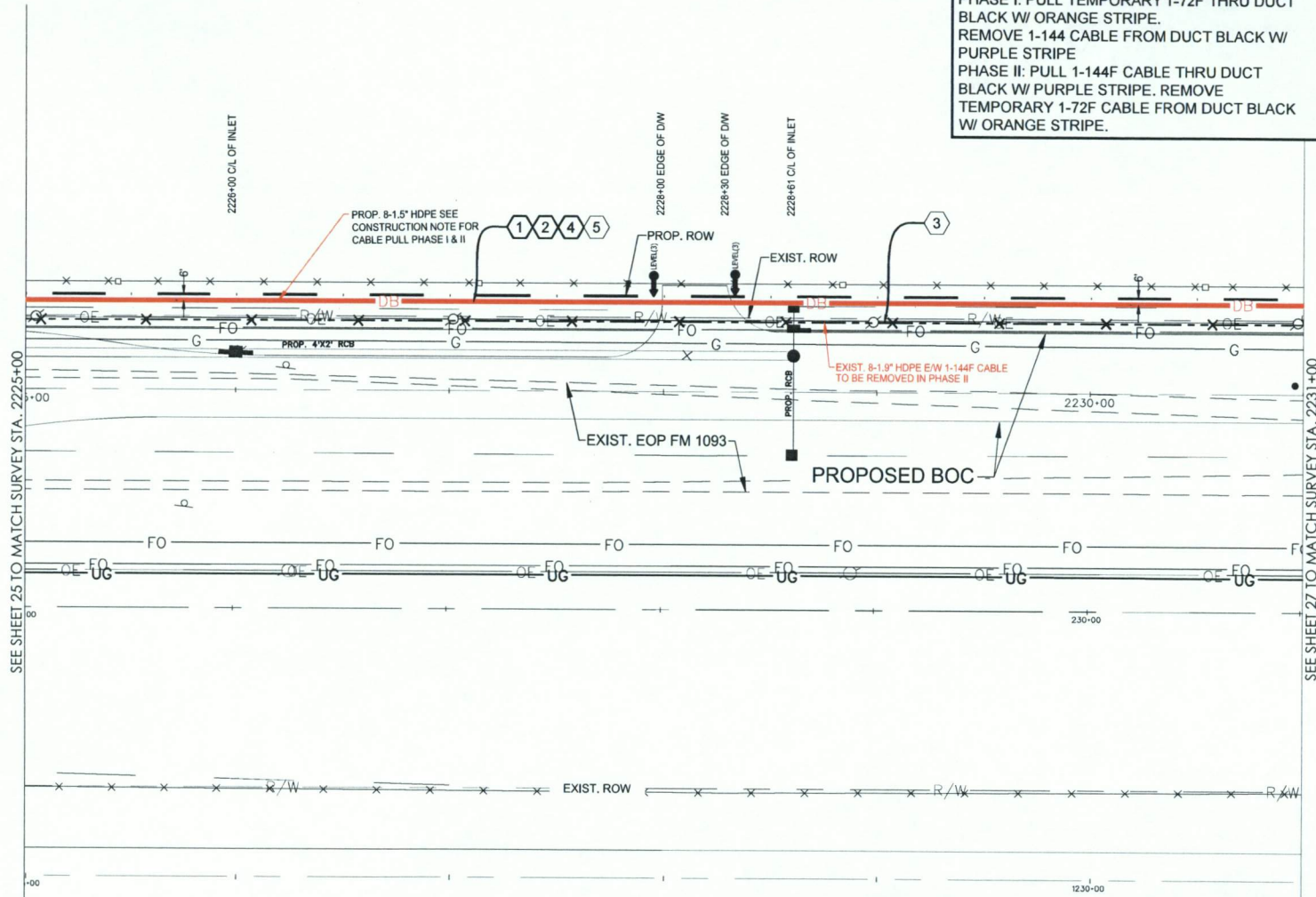
DRAWING NAME: Level 3 Fulshear, TX FM 1093 Westpark Extension Phase II-1-18.dwg  
CONFIDENTIAL/PROPRIETARY

**CONSTRUCTION NOTE:**

PHASE I: PULL TEMPORARY 1-72F THRU DUCT BLACK W/ ORANGE STRIPE.  
REMOVE 1-144 CABLE FROM DUCT BLACK W/ PURPLE STRIPE  
PHASE II: PULL 1-144F CABLE THRU DUCT BLACK W/ PURPLE STRIPE, REMOVE TEMPORARY 1-72F CABLE FROM DUCT BLACK W/ ORANGE STRIPE.

**CONSTRUCTION NOTES**

- ① CONDUIT OWNER: LEVEL (3)  
CONDUIT LENGTH: 600'  
CONDUIT QTY: 8  
CONDUIT SIZE: 1.5"  
CONDUIT TYPE: SDR-11 HDPE  
NOTES: DIRECTIONAL BORE 8-1.5" HDPE TO BE E/W 1-144F LEVEL (3) CABLE
- ② CABLE FIBERS: 72F  
CABLE OWNER: LEVEL (3)  
CABLE LENGTH: 600'  
NOTES: PULL CABLE IN NEW 1.5" HDPE
- ③ CABLE FIBERS: 144F  
CABLE OWNER: LEVEL (3)  
CABLE LENGTH: 600'  
NOTES: REMOVED EXIST. 144F CABLE FROM EXIST. CONDUIT
- ④ CABLE FIBERS: 144F  
CABLE OWNER: LEVEL (3)  
CABLE LENGTH: 600'  
NOTES: PHASE II PULL CABLE IN NEW 1.5" HDPE
- ⑤ CABLE FIBERS: 72F  
CABLE OWNER: LEVEL (3)  
CABLE LENGTH: 600'  
NOTES: PHASE II REMOVED EXIST. 72F CABLE FROM EXIST. CONDUIT



SEE SHEET 25 TO MATCH SURVEY STA. 2225+00

SEE SHEET 27 TO MATCH SURVEY STA. 2231+00

**SITE PLAN**

3				
2	03/7/18	GFS	GFS	REVISION
1	06/28/17	GFS	GFS	CONSTRUCTION
NO.	DATE	ENG DESIGN	DRAFTING	COMMENT



LEVEL 3 ENGINEER: KEITH HALL  
ENGINEERING FIRM: GOLDEN FIELD SERVICES  
PROJECT NUMBER: FM 1093 WESTPARK EXTENSION PHASE II  
LOCATION: FULSHEAR, TX



SCALE:  
HOR: 1" = 50'  
VERT: 1" = 10'

PHASE 2A Page Rate Card			
Unit Code & Description	Units	Estimated Quantity	Actual Quantity
UGB-30700 - DIR. BORE GREATER THAN 1500'; ADDITIONAL HDPE CONDUIT UP TO 2" (5 OF 8)	FT	3,000'	--
UGB-30710 - DIR. BORE GREATER THAN 1500'; 3 HDPE CONDUIT UP TO 2" (3 OF 8)	FT	600'	--
UGB-30960 - PLACE UP TO 288 COUNT FOC IN CONDUIT, UP TO 1500'(INCL COILS)	FT	600'	--
UGB-30970 - PLACE UP TO 288 COUNT FOC IN CONDUIT, (EACH ADDITIONAL CABLE)	FT	600'	--
UGB-31060 - REMOVE & DISPOSE OF CABLE	FT	600'	--
UGB-31070 - REMOVE & DISPOSE OF CABLE, EACH ADDITIONAL CABLE	FT	600'	--
MA1-90070 - CONDUIT: 1 1/2" HDPE SDR-11	FT	4800'	--

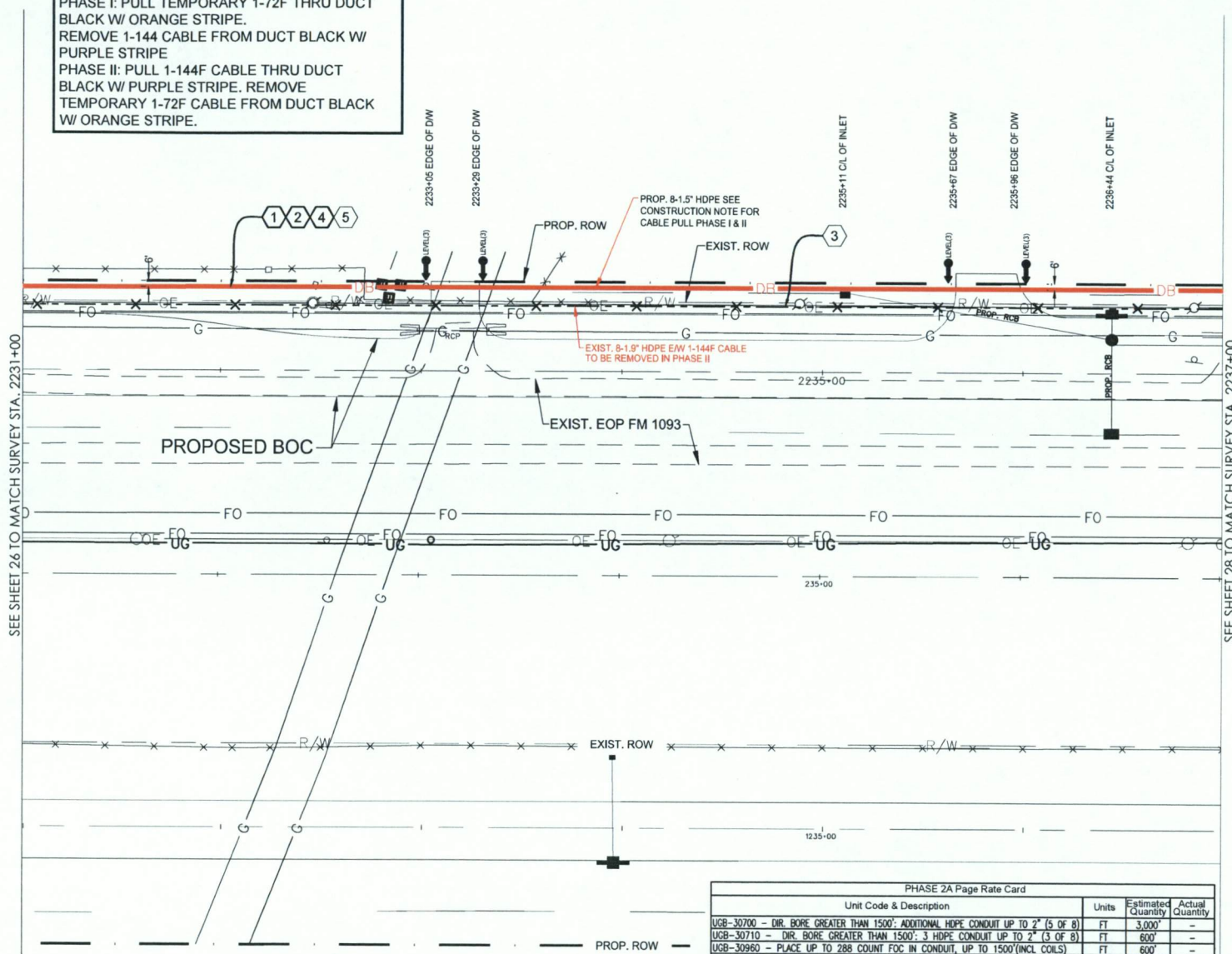
FULSHEAR, TX  
FORT BEND COUNTY

**CONSTRUCTION NOTE:**

PHASE I: PULL TEMPORARY 1-72F THRU DUCT BLACK W/ ORANGE STRIPE.  
REMOVE 1-144F CABLE FROM DUCT BLACK W/ PURPLE STRIPE  
PHASE II: PULL 1-144F CABLE THRU DUCT BLACK W/ PURPLE STRIPE. REMOVE TEMPORARY 1-72F CABLE FROM DUCT BLACK W/ ORANGE STRIPE.

**CONSTRUCTION NOTES**

- 1 CONDUIT OWNER: LEVEL (3)  
CONDUIT LENGTH: 600'  
CONDUIT QTY: 8  
CONDUIT SIZE: 1.5"  
CONDUIT TYPE: SDR-11 HDPE  
NOTES: DIRECTIONAL BORE 8-1.5" HDPE TO BE E/W 1-144F LEVEL (3) CABLE
- 2 CABLE FIBERS: 72F  
CABLE OWNER: LEVEL (3)  
CABLE LENGTH: 600'  
NOTES: PULL CABLE IN NEW 1.5" HDPE
- 3 CABLE FIBERS: 144F  
CABLE OWNER: LEVEL (3)  
CABLE LENGTH: 600'  
NOTES: REMOVED EXIST. 144F CABLE FROM EXIST. CONDUIT
- 4 CABLE FIBERS: 144F  
CABLE OWNER: LEVEL (3)  
CABLE LENGTH: 600'  
NOTES: PHASE II PULL CABLE IN NEW 1.5" HDPE
- 5 CABLE FIBERS: 72F  
CABLE OWNER: LEVEL (3)  
CABLE LENGTH: 600'  
NOTES: PHASE II REMOVED EXIST. 72F CABLE FROM EXIST. CONDUIT



SEE SHEET 26 TO MATCH SURVEY STA. 2231+00

SEE SHEET 28 TO MATCH SURVEY STA. 2237+00

PHASE 2A Page Rate Card

Unit Code & Description	Units	Estimated Quantity	Actual Quantity
UGB-30700 - DIR. BORE GREATER THAN 1500'; ADDITIONAL HDPE CONDUIT UP TO 2" (5 OF 8)	FT	3,000'	-
UGB-30710 - DIR. BORE GREATER THAN 1500'; 3 HDPE CONDUIT UP TO 2" (3 OF 8)	FT	600'	-
UGB-30960 - PLACE UP TO 288 COUNT FOC IN CONDUIT, UP TO 1500'(INCL COILS)	FT	600'	-
UGB-30970 - PLACE UP TO 288 COUNT FOC IN CONDUIT, (EACH ADDITIONAL CABLE)	FT	600'	-
UGB-31060 - REMOVE & DISPOSE OF CABLE	FT	600'	-
UGB-31070 - REMOVE & DISPOSE OF CABLE, EACH ADDITIONAL CABLE	FT	600'	-
UM1-90070 - CONDUIT: 1 1/2" HDPE SDR-11	FT	4800'	-



SCALE:  
HORI: 1" = 50'  
VERT: 1" = 10'

**SITE PLAN**

NO.	DATE	ENG. DESIGN	DRAFTING	CONSTRUCTION	COMMENT
3					
2	03/7/18	GFS	GFS		REVISION
1	06/28/17	GFS	GFS		CONSTRUCTION



LEVEL 3 ENGINEER: KEITH HALL  
ENGINEERING FIRM: GOLDEN FIELD SERVICES  
PROJECT NUMBER: FM 1093 WESTPARK EXTENSION PHASE II  
LOCATION: FULSHEAR, TX

DRAWING NAME: Level 3 Fulshear, TX FM 1093 Westpark Extension Phase II-17-18.dwg  
CONFIDENTIAL/PROPRIETARY SHEET: 27 OF 43

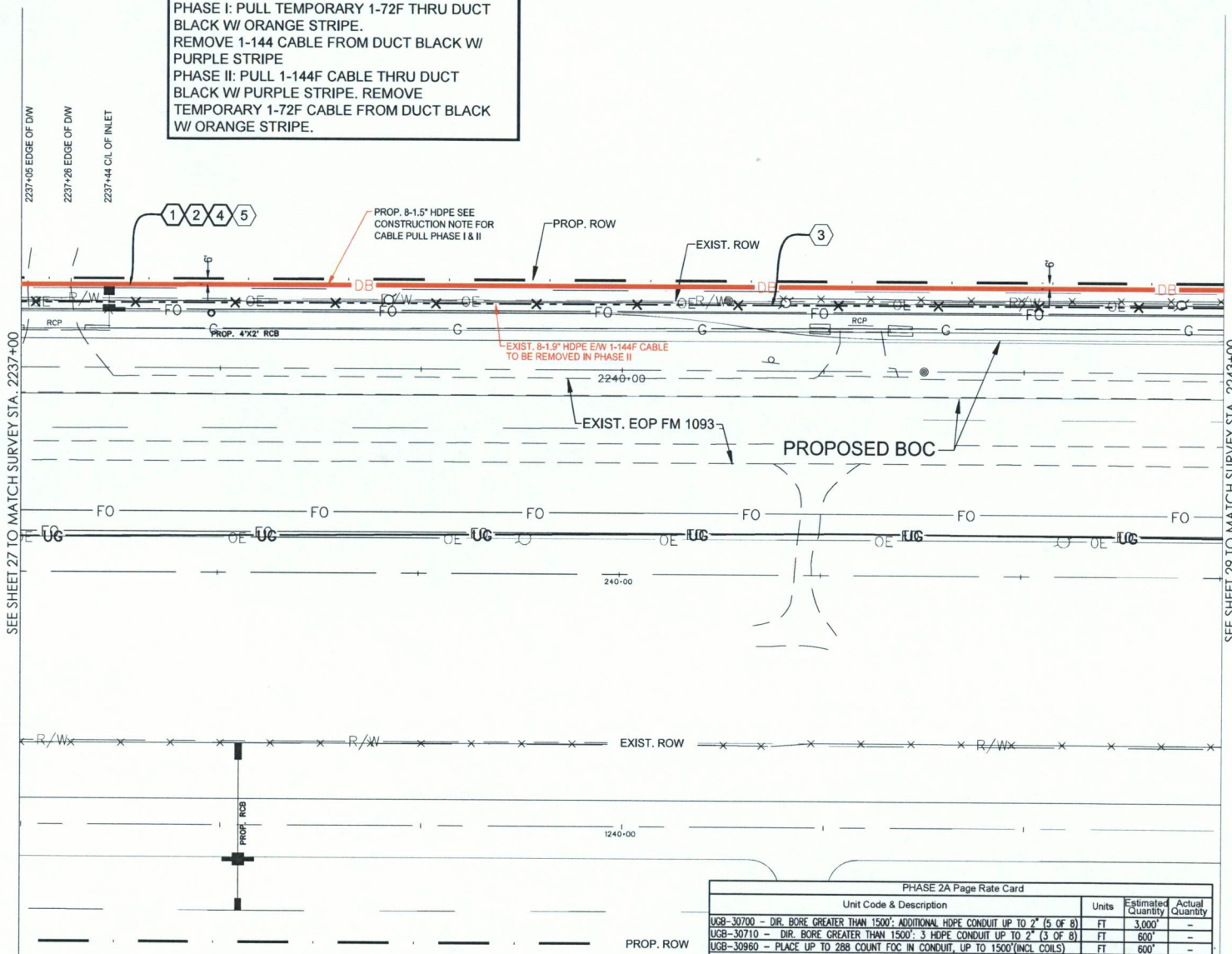
FULSHEAR, TX  
FORT BEND COUNTY

**CONSTRUCTION NOTE:**

PHASE I: PULL TEMPORARY 1-72F THRU DUCT BLACK W/ ORANGE STRIPE.  
REMOVE 1-144 CABLE FROM DUCT BLACK W/ PURPLE STRIPE  
PHASE II: PULL 1-144F CABLE THRU DUCT BLACK W/ PURPLE STRIPE. REMOVE TEMPORARY 1-72F CABLE FROM DUCT BLACK W/ ORANGE STRIPE.

**CONSTRUCTION NOTES**

- 1 CONDUIT OWNER: LEVEL (3)  
CONDUIT LENGTH: 600'  
CONDUIT QTY: 8  
CONDUIT SIZE: 1.5"  
CONDUIT TYPE: SDR-11 HDPE  
NOTES: DIRECTIONAL BORE 8-1.5" HDPE TO BE E/W 1-144F LEVEL (3) CABLE
- 2 CABLE FIBERS: 72F  
CABLE OWNER: LEVEL (3)  
CABLE LENGTH: 600'  
NOTES: PULL CABLE IN NEW 1.5" HDPE
- 3 CABLE FIBERS: 144F  
CABLE OWNER: LEVEL (3)  
CABLE LENGTH: 600'  
NOTES: REMOVED EXIST. 144F CABLE FROM EXIST. CONDUIT
- 4 CABLE FIBERS: 144F  
CABLE OWNER: LEVEL (3)  
CABLE LENGTH: 600'  
NOTES: PULL CABLE IN NEW 1.5" HDPE
- 5 CABLE FIBERS: 72F  
CABLE OWNER: LEVEL (3)  
CABLE LENGTH: 600'  
NOTES: REMOVED EXIST. 72F CABLE FROM EXIST. CONDUIT



PHASE 2A Page Rate Card			
Unit Code & Description	Units	Estimated Quantity	Actual Quantity
UGB-30700 - DIR. BORE GREATER THAN 1500'; ADDITIONAL HDPE CONDUIT UP TO 2" (5 OF 8)	FT	3,000'	-
UGB-30710 - DIR. BORE GREATER THAN 1500'; 3 HDPE CONDUIT UP TO 2" (3 OF 8)	FT	600'	-
UGB-30960 - PLACE UP TO 288 COUNT FOC IN CONDUIT, UP TO 1500' (INCL COILS)	FT	600'	-
UGB-30970 - PLACE UP TO 288 COUNT FOC IN CONDUIT, (EACH ADDITIONAL CABLE)	FT	600'	-
UGB-31060 - REMOVE & DISPOSE OF CABLE	FT	600'	-
UGB-31070 - REMOVE & DISPOSE OF CABLE, EACH ADDITIONAL CABLE	FT	600'	-
MAT-90070 - CONDUIT: 1 1/2" HDPE SDR-11	FT	4800'	-



SCALE:  
HORI: 1" = 50'  
VERT: 1" = 10'

**SITE PLAN**

NO.	DATE	ENG DESIGN	DRAFTING	COMMENT
3	03/7/18	GFS	GFS	REVISION
1	06/28/17	GFS	GFS	CONSTRUCTION

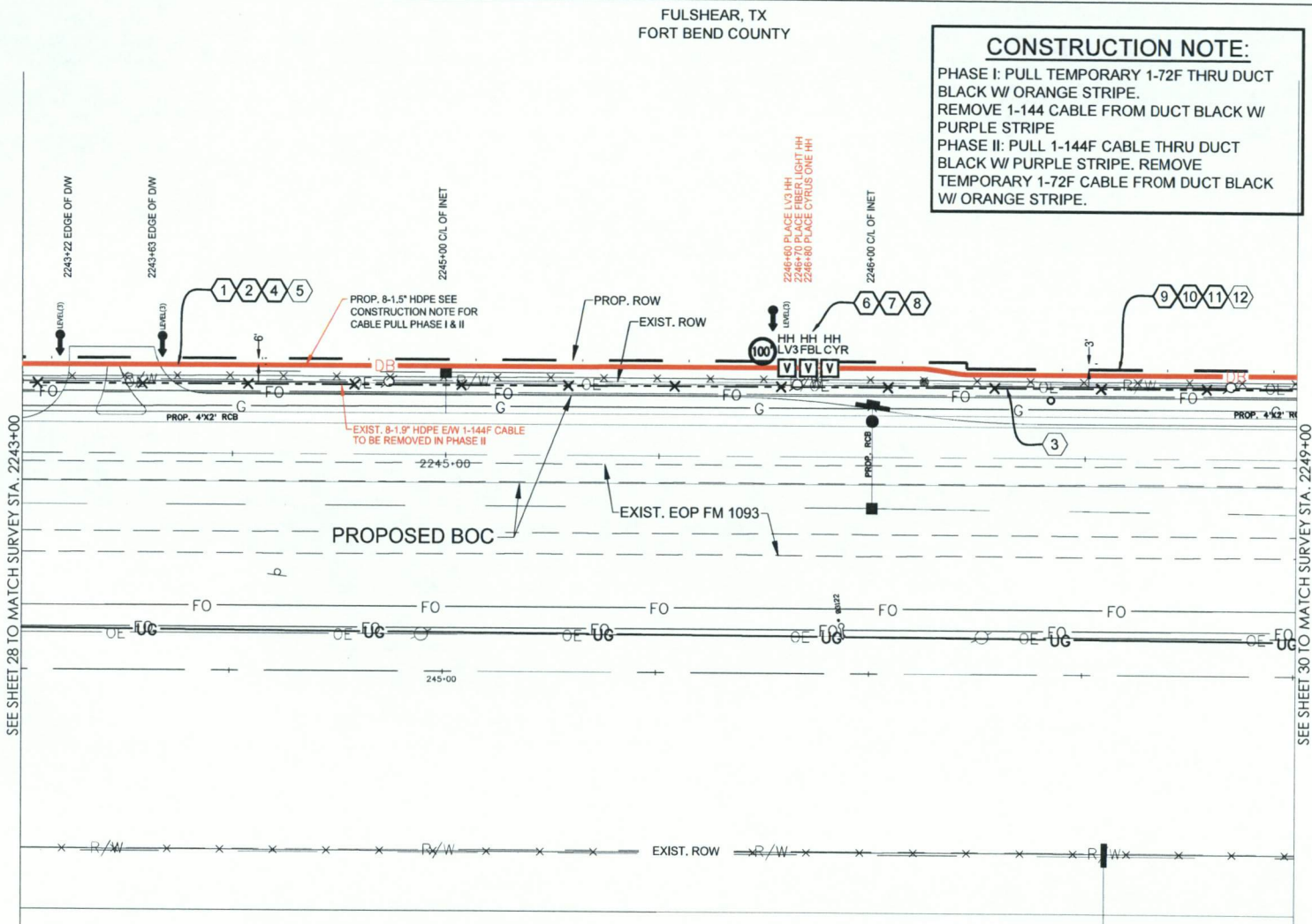


LEVEL 3 ENGINEER: KEITH HALL  
ENGINEERING FIRM: GOLDEN FIELD SERVICES  
PROJECT NUMBER: FM 1093 WESTPARK EXTENSION PHASE II  
LOCATION: FULSHEAR, TX  
DRAWING NAME: Level 3 Fulshear, TX FM 1093 Westpark Extension Phase II-17-18.dwg  
CONFIDENTIAL/PROPRIETARY SHEET: 28 OF 43

FULSHEAR, TX  
FORT BEND COUNTY

**CONSTRUCTION NOTE:**

PHASE I: PULL TEMPORARY 1-72F THRU DUCT BLACK W/ ORANGE STRIPE. REMOVE 1-144 CABLE FROM DUCT BLACK W/ PURPLE STRIPE  
PHASE II: PULL 1-144F CABLE THRU DUCT BLACK W/ PURPLE STRIPE. REMOVE TEMPORARY 1-72F CABLE FROM DUCT BLACK W/ ORANGE STRIPE.



**CONSTRUCTION NOTES**

- 1 CONDUIT OWNER: LEVEL (3)  
CONDUIT LENGTH: 360'  
CONDUIT QTY: 8  
CONDUIT SIZE: 1.5"  
CONDUIT TYPE: SDR-11 HDPE  
NOTES: DIRECTIONAL BORE 8-1.5" HDPE TO BE E/W 1-144F LEVEL (3) CABLE
- 2 CABLE FIBERS: 72F  
CABLE OWNER: LEVEL (3)  
CABLE LENGTH: 460'  
NOTES: PULL CABLE IN NEW 1.5" HDPE W/ 100' COIL IN LEVEL 3 H.H.
- 3 CABLE FIBERS: 144F  
CABLE OWNER: LEVEL (3)  
CABLE LENGTH: 360'  
NOTES: REMOVED EXIST. 144F CABLE FROM EXIST. CONDUIT
- 4 CABLE FIBERS: 144F  
CABLE OWNER: LEVEL (3)  
CABLE LENGTH: 460'  
NOTES: PHASE II PULL CABLE IN NEW 1.5" HDPE W/ 100' COIL IN LEVEL 3 H.H.
- 5 CABLE FIBERS: 72F  
CABLE OWNER: LEVEL (3)  
CABLE LENGTH: 460'  
NOTES: PHASE II REMOVED EXIST. 72F CABLE FROM EXIST. CONDUIT
- 6 LEVEL (3) HANDHOLE  
NOTE: LEAVE 100' COIL IN HH
- 7 FIBERLIGHT HANDHOLE  
NOTE:
- 8 CYRUSONE HANDHOLE  
NOTE:
- 9 CONDUIT OWNER: LEVEL (3)  
CONDUIT LENGTH: 240'  
CONDUIT QTY: 8  
CONDUIT SIZE: 1.5"  
CONDUIT TYPE: SDR-11 HDPE  
NOTES: DIRECTIONAL BORE 8-1.5" HDPE TO BE E/W 1-144F LEVEL (3) CABLE
- 10 CABLE FIBERS: 72F  
CABLE OWNER: LEVEL (3)  
CABLE LENGTH: 240'  
NOTES: PULL CABLE IN NEW 1.5" HDPE
- 11 CABLE FIBERS: 144F  
CABLE OWNER: LEVEL (3)  
CABLE LENGTH: 240'  
NOTES: PHASE II PULL CABLE IN NEW 1.5" HDPE
- 12 CABLE FIBERS: 72F  
CABLE OWNER: LEVEL (3)  
CABLE LENGTH: 240'  
NOTES: PHASE II REMOVED EXIST. 72F CABLE FROM EXIST. CONDUIT

SEE SHEET 28 TO MATCH SURVEY STA. 2243+00

SEE SHEET 30 TO MATCH SURVEY STA. 2249+00

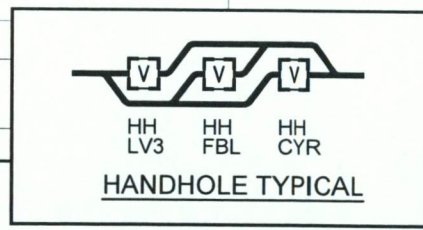
PROPOSED BOC

EXIST. EOP FM 1093

PROP. 8-1.5" HDPE SEE CONSTRUCTION NOTE FOR CABLE PULL PHASE I & II

EXIST. 8-1.5" HDPE E/W 1-144F CABLE TO BE REMOVED IN PHASE II

2246+60 PLACE LV3 HH LIGHT HH  
2246+80 PLACE CYRUS ONE HH



PHASE 2A Page Rate Card			
Unit Code & Description	Units	Estimated Quantity	Actual Quantity
UGB-30700 - DIR. BORE GREATER THAN 1500'; ADDITIONAL HDPE CONDUIT UP TO 2" (5 OF 8)	FT	3,000'	-
UGB-30710 - DIR. BORE GREATER THAN 1500'; 3 HDPE CONDUIT UP TO 2" (3 OF 8)	FT	600'	-
UGB-30960 - PLACE UP TO 288 COUNT FOC IN CONDUIT, UP TO 1500' (INCL. COILS)	FT	700'	-
UGB-30970 - PLACE UP TO 288 COUNT FOC IN CONDUIT, (EACH ADDITIONAL CABLE)	FT	700'	-
UGB-31060 - REMOVE & DISPOSE OF CABLE	FT	600'	-
UGB-31070 - REMOVE & DISPOSE OF CABLE, EACH ADDITIONAL CABLE	FT	700'	-
UGB-31280 - PLACE NEW 30"X60"X36" NON-CONCRETE MANHOLE/HANDHOLE	EA	3	-
UGB-32000 - PLACE LOCATE TEST STATION	EA	1	-
MAT-90070 - CONDUIT: 1 1/2" HDPE SDR-11	FT	4800'	-
MAT-90980 - TIER 15 - 30"X60"X36" - WITH KNOCK-OUTS AND RACKING	EA	1	-
MAT-92080 - TEST STATIONS - MARKER POST W/ REMOVABLE TOP	EA	1	-

PROP. ROW

**SITE PLAN**

3				
2	03/7/18	GFS	GFS	REVISION
1	06/28/17	GFS	GFS	CONSTRUCTION
NO.	DATE	ENG DESIGN	DRAFTING	COMMENT



SCALE:  
HORI: 1" = 50'  
VERT: 1" = 10'



LEVEL 3 ENGINEER: KEITH HALL  
ENGINEERING FIRM: GOLDEN FIELD SERVICES  
PROJECT NUMBER: FM 1093 WESTPARK EXTENSION PHASE II  
LOCATION: FULSHEAR, TX  
DRAWING NAME: Level 3 Fulshear, TX FM 1093 Westpark Extension Phase II-17-18.dwg  
CONFIDENTIAL/PROPRIETARY SHEET 29 OF 43

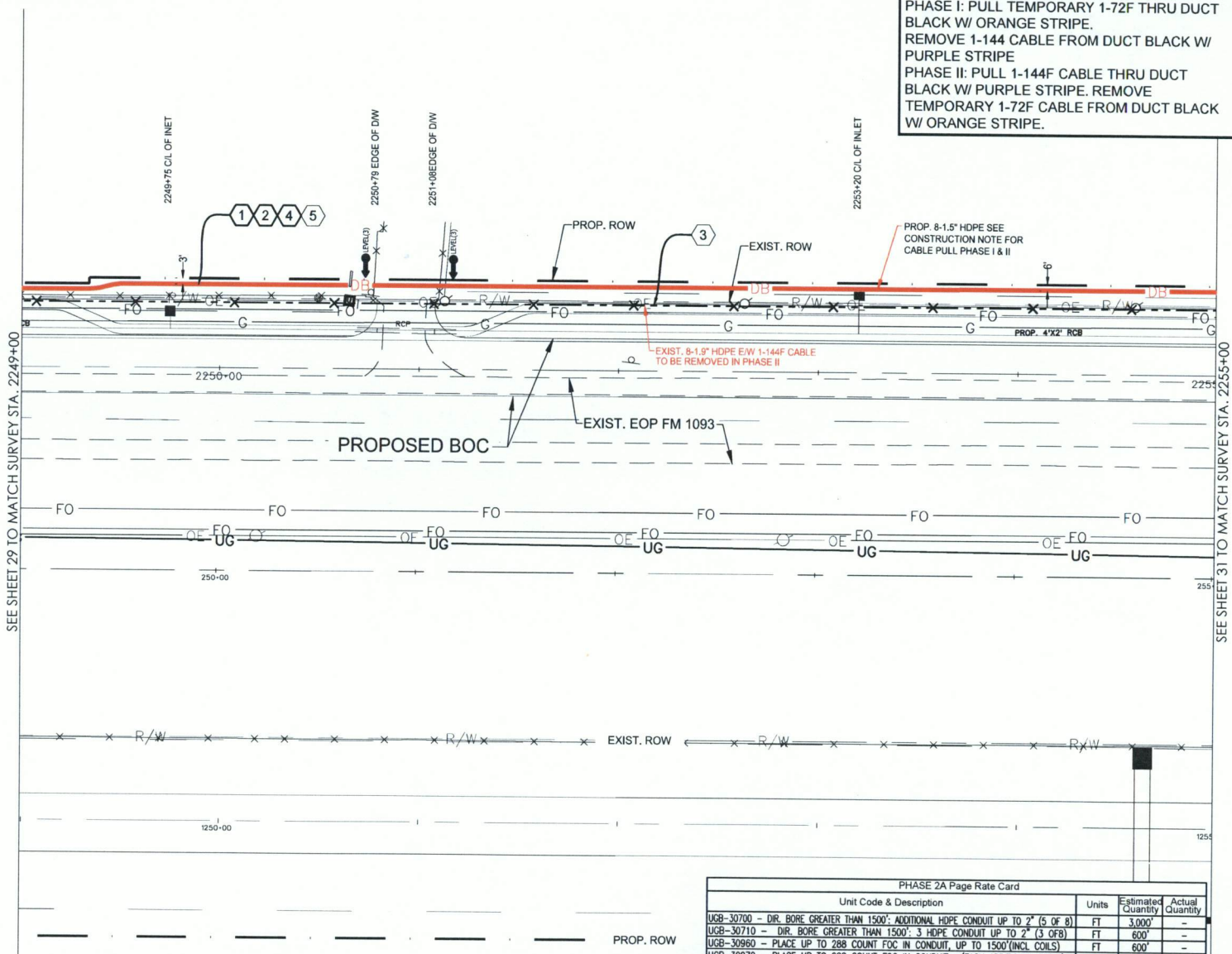
FULSHEAR, TX  
FORT BEND COUNTY

**CONSTRUCTION NOTE:**

PHASE I: PULL TEMPORARY 1-72F THRU DUCT BLACK W/ ORANGE STRIPE.  
REMOVE 1-144 CABLE FROM DUCT BLACK W/ PURPLE STRIPE  
PHASE II: PULL 1-144F CABLE THRU DUCT BLACK W/ PURPLE STRIPE. REMOVE TEMPORARY 1-72F CABLE FROM DUCT BLACK W/ ORANGE STRIPE.

**CONSTRUCTION NOTES**

- 1 CONDUIT OWNER: LEVEL (3)  
CONDUIT LENGTH: 600'  
CONDUIT QTY: 8  
CONDUIT SIZE: 1.5"  
CONDUIT TYPE: SDR-11 HDPE  
NOTES: DIRECTIONAL BORE 8-1.5" HDPE TO BE E/W 1-144F LEVEL (3) CABLE
- 2 CABLE FIBERS: 72F  
CABLE OWNER: LEVEL (3)  
CABLE LENGTH: 600'  
NOTES: PULL CABLE IN NEW 1.5" HDPE
- 3 CABLE FIBERS: 144F  
CABLE OWNER: LEVEL (3)  
CABLE LENGTH: 600'  
NOTES: REMOVED EXIST. 144F CABLE FROM EXIST. CONDUIT
- 4 CABLE FIBERS: 144F  
CABLE OWNER: LEVEL (3)  
CABLE LENGTH: 600'  
NOTES: PHASE II PULL CABLE IN NEW 1.5" HDPE
- 5 CABLE FIBERS: 72F  
CABLE OWNER: LEVEL (3)  
CABLE LENGTH: 600'  
NOTES: PHASE II REMOVED EXIST. 72F CABLE FROM EXIST. CONDUIT



SEE SHEET 29 TO MATCH SURVEY STA. 2249+00

SEE SHEET 31 TO MATCH SURVEY STA. 2255+00

PROP. 8-1.5" HDPE SEE CONSTRUCTION NOTE FOR CABLE PULL PHASE I & II

EXIST. 8-1.5" HDPE E/W 1-144F CABLE TO BE REMOVED IN PHASE II

PROP. 4'X2' RCB

PHASE 2A Page Rate Card			
Unit Code & Description	Units	Estimated Quantity	Actual Quantity
UGB-30700 - DIR. BORE GREATER THAN 1500'; ADDITIONAL HDPE CONDUIT UP TO 2" (5 OF 8)	FT	3,000'	-
UGB-30710 - DIR. BORE GREATER THAN 1500'; 3 HDPE CONDUIT UP TO 2" (3 OF 8)	FT	600'	-
UGB-30960 - PLACE UP TO 288 COUNT FOC IN CONDUIT, UP TO 1500' (INCL. COILS)	FT	600'	-
UGB-30970 - PLACE UP TO 288 COUNT FOC IN CONDUIT, (EACH ADDITIONAL CABLE)	FT	600'	-
UGB-31060 - REMOVE & DISPOSE OF CABLE, EACH ADDITIONAL CABLE	FT	600'	-
UGB-31070 - REMOVE & DISPOSE OF CABLE, EACH ADDITIONAL CABLE	FT	600'	-
MAT-90070 - CONDUIT: 1 1/2" HDPE SDR-11	FT	4800'	-



SCALE:  
HORI: 1" = 50'  
VERT: 1" = 10'

**SITE PLAN**

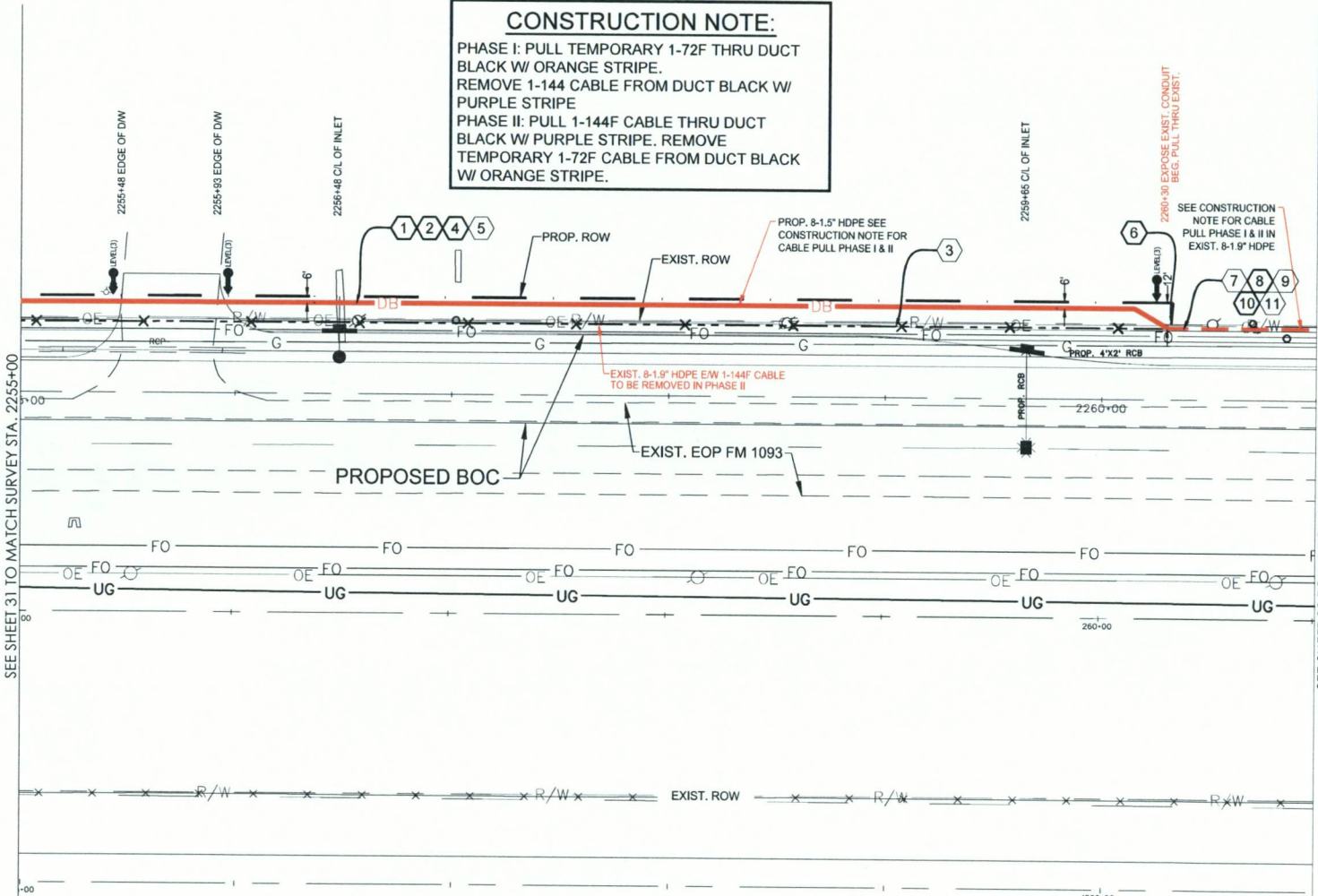
3				
2	03/7/18	GFS	GFS	REVISION
1	06/28/17	GFS	GFS	CONSTRUCTION
NO.	DATE	ENG. DESIGN	DRAFTING	COMMENT



LEVEL 3 ENGINEER: KEITH HALL  
ENGINEERING FIRM: GOLDEN FIELD SERVICES  
PROJECT NUMBER: FM 1093 WESTPARK EXTENSION PHASE II  
LOCATION: FULSHEAR, TX  
DRAWING NAME: Level 3 Fulshear, TX FM 1093 Westpark Extension Phase II 6-1-18.dwg  
CONFIDENTIAL/PROPRIETARY SHEET: 30 OF 43

**CONSTRUCTION NOTE:**

PHASE I: PULL TEMPORARY 1-72F THRU DUCT BLACK W/ ORANGE STRIPE.  
REMOVE 1-144F CABLE FROM DUCT BLACK W/ PURPLE STRIPE  
PHASE II: PULL 1-144F CABLE THRU DUCT BLACK W/ PURPLE STRIPE. REMOVE TEMPORARY 1-72F CABLE FROM DUCT BLACK W/ ORANGE STRIPE.



**CONSTRUCTION NOTES**

- 1 CONDUIT OWNER: LEVEL (3)  
CONDUIT LENGTH: 530'  
CONDUIT QTY: 8  
CONDUIT SIZE: 1.5"  
CONDUIT TYPE: SDR-11 HDPE  
NOTES: DIRECTIONAL BORE 8-1.5" HDPE TO BE E/W 1-144F LEVEL (3) CABLE
- 2 CABLE FIBERS: 72F  
CABLE OWNER: LEVEL (3)  
CABLE LENGTH: 530'  
NOTES: PULL CABLE IN NEW 1.5" HDPE
- 3 CABLE FIBERS: 144F  
CABLE OWNER: LEVEL (3)  
CABLE LENGTH: 530'  
NOTES: REMOVED EXIST. 144F CABLE FROM EXIST. CONDUIT
- 4 CABLE FIBERS: 144F  
CABLE OWNER: LEVEL (3)  
CABLE LENGTH: 530'  
NOTES: PHASE II PULL CABLE IN NEW 1.5" HDPE
- 5 CABLE FIBERS: 72F  
CABLE OWNER: LEVEL (3)  
CABLE LENGTH: 530'  
NOTES: REMOVED EXIST. 72F CABLE FROM EXIST. CONDUIT
- 6 INTERCEPT EXIST. LEVEL (3) CONDUIT
- 7 CONDUIT OWNER: LEVEL (3)  
CONDUIT LENGTH: 70'  
CONDUIT QTY: 8  
CONDUIT SIZE: 1.5"  
CONDUIT TYPE: SDR-11 HDPE  
NOTES: REMOVED EXIST. 144F CABLE FROM EXIST. CONDUIT
- 8 CABLE FIBERS: 72F  
CABLE OWNER: LEVEL (3)  
CABLE LENGTH: 70'  
NOTES: PULL CABLE IN EXIST 1.5" HDPE
- 9 CABLE FIBERS: 144F  
CABLE OWNER: LEVEL (3)  
CABLE LENGTH: 70'  
NOTES: REMOVED EXIST. 144F CABLE FROM EXIST. CONDUIT
- 10 CABLE FIBERS: 144F  
CABLE OWNER: LEVEL (3)  
CABLE LENGTH: 70'  
NOTES: PHASE II PULL CABLE IN EXIST 1.5" HDPE
- 11 CABLE FIBERS: 72F  
CABLE OWNER: LEVEL (3)  
CABLE LENGTH: 70'  
NOTES: PHASE II REMOVED EXIST. 72F CABLE FROM EXIST. CONDUIT

**SITE PLAN**

PHASE 2A Page Rate Card

Unit Code & Description	Units	Estimated Quantity	Actual Quantity
UCB-30700 - DIR. BORE GREATER THAN 1500': ADDITIONAL HDPE CONDUIT UP TO 2" (5 OF 8)	FT	2,650'	-
UCB-30710 - DIR. BORE GREATER THAN 1500': 3 HDPE CONDUIT UP TO 2" (3 OF 8)	FT	530'	-
UCB-30820 - ROD & PROOF EXISTING CONDUIT	FT	70'	-
UCB-30950 - PLACE UP TO 288 COUNT FOC IN CONDUIT, UP TO 1500'(INCL COILS)	FT	600'	-
UCB-30970 - PLACE UP TO 288 COUNT FOC IN CONDUIT, (EACH ADDITIONAL CABLE)	FT	600'	-
UCB-31050 - REMOVE & Dispose of Cable	FT	600'	-
UCB-31070 - REMOVE & DISPOSE OF CABLE, EACH ADDITIONAL CABLE	FT	600'	-
UCB-31640 - EXCAVATE SMALL PIT: 6'X4'5"	EA	1	-
MAT-90070 - Conduit: 1 1/2" HDPE SDR-11	FT	4240'	-

PROP. ROW



SCALE:  
HOR: 1" = 50'  
VERT: 1" = 10'

3	03/7/18	GFS	GFS	REVISION
2	06/28/17	GFS	GFS	CONSTRUCTION
1				
INC.	DATE	ENG DESIGN	DRAFTING	COMMENT

**Level(3)**  
COMMUNICATIONS

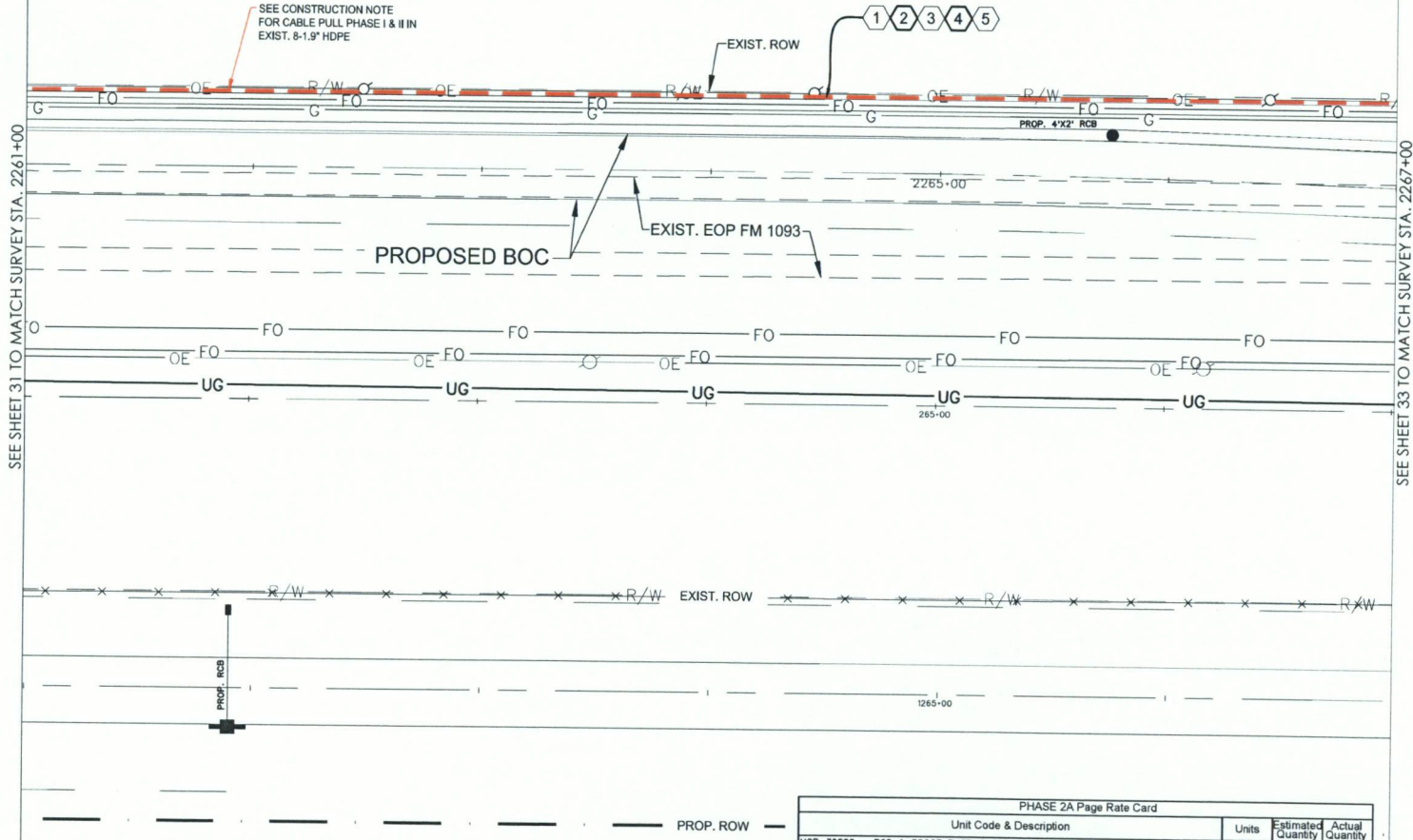
LEVEL 3 ENGINEER: KEITH HALL  
ENGINEERING FIRM: GOLDEN FIELD SERVICES  
PROJECT NUMBER: FM 1093 WESTPARK EXTENSION PHASE II  
LOCATION: FULSHEAR, TX

DRAWING NAME: Level 3 Fulshear, TX FM 1093 Westpark Extension Phase II-1-7-18.dwg  
CONFIDENTIAL/PROPRIETARY

**CONSTRUCTION NOTE:**

PHASE I: PULL TEMPORARY 1-72F THRU DUCT BLACK W/ ORANGE STRIPE.  
REMOVE 1-144 CABLE FROM DUCT BLACK W/ PURPLE STRIPE  
PHASE II: PULL 1-144F CABLE THRU DUCT BLACK W/ PURPLE STRIPE. REMOVE TEMPORARY 1-72F CABLE FROM DUCT BLACK W/ ORANGE STRIPE.

SEE CONSTRUCTION NOTE FOR CABLE PULL PHASE I & II IN EXIST. 8-1.9" HDPE



**CONSTRUCTION NOTES**

- ① CONDUIT OWNER: LEVEL (3)  
CONDUIT LENGTH: 600'  
CONDUIT QTY: 8  
CONDUIT SIZE: 1.5"  
CONDUIT TYPE: SDR-11 HDPE  
NOTES: REMOVED EXIST. 144F CABLE FROM EXIST. CONDUIT
- ② CABLE FIBERS: 72F  
CABLE OWNER: LEVEL (3)  
CABLE LENGTH: 600'  
NOTES: PULL CABLE IN EXIST. 1.5" HDPE
- ③ CABLE FIBERS: 144F  
CABLE OWNER: LEVEL (3)  
CABLE LENGTH: 600'  
NOTES: REMOVED EXIST. 144F CABLE FROM EXIST. CONDUIT
- ④ CABLE FIBERS: 144F  
CABLE OWNER: LEVEL (3)  
CABLE LENGTH: 600'  
NOTES: PHASE II PULL CABLE IN EXIST. 1.5" HDPE
- ⑤ CABLE FIBERS: 72F  
CABLE OWNER: LEVEL (3)  
CABLE LENGTH: 600'  
NOTES: PHASE II REMOVED EXIST. 72F CABLE FROM EXIST. CONDUIT

**SITE PLAN**

3				
2	03/7/18	GFS	GFS	REVISION
1	06/28/17	GFS	GFS	CONSTRUCTION
NO.	DATE	ENG DESIGN	DRAFTING	COMMENT



LEVEL 3 ENGINEER: KEITH HALL  
ENGINEERING FIRM: GOLDEN FIELD SERVICES  
PROJECT NUMBER: FM 1093 WESTPARK EXTENSION PHASE II  
LOCATION: FULSHEAR, TX

DRAWING NAME: Level 3 Fulshear, TX FM 1093 Westpark Extension Phase II-1-7-18.dwg  
CONFIDENTIAL/PROPRIETARY



SCALE:  
HOR: 1" = 50'  
VERT: 1" = 10'

PHASE 2A Page Rate Card			
Unit Code & Description	Units	Estimated Quantity	Actual Quantity
UGB-30620 - ROD & PROOF EXISTING CONDUIT	FT	600'	-
UGB-30960 - PLACE UP TO 288 COUNT FOC IN CONDUIT, UP TO 1500'(INCL COILS)	FT	600'	-
UGB-30970 - PLACE UP TO 288 COUNT FOC IN CONDUIT, (EACH ADDITIONAL CABLE)	FT	600'	-
UGB-31070 - REMOVE & DISPOSE OF CABLE, EACH ADDITIONAL CABLE	FT	600'	-

SEE SHEET 31 TO MATCH SURVEY STA. 2261+00

SEE SHEET 33 TO MATCH SURVEY STA. 2267+00

**CONSTRUCTION NOTE:**

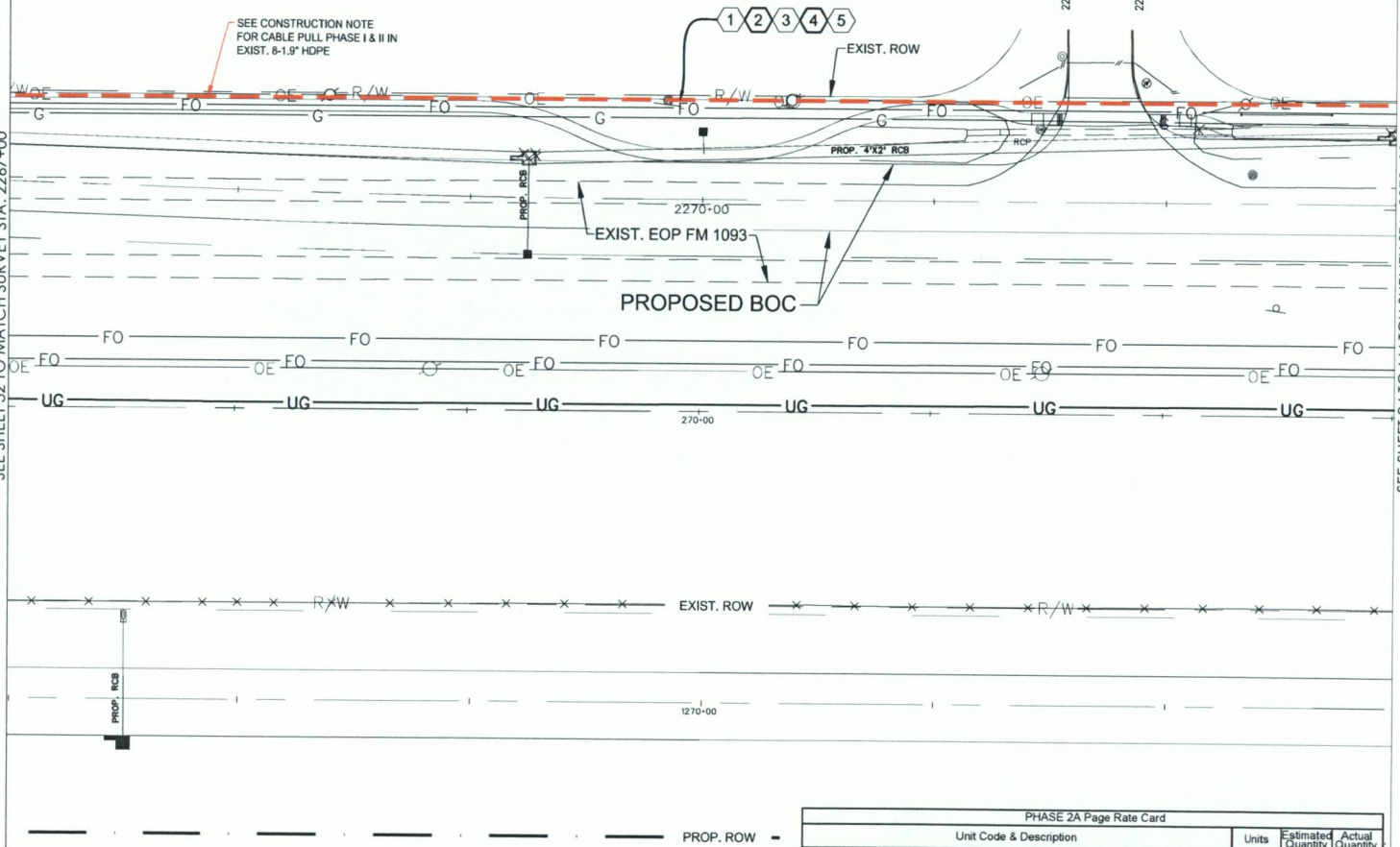
PHASE I: PULL TEMPORARY 1-72F THRU DUCT BLACK W/ ORANGE STRIPE.  
REMOVE 1-144 CABLE FROM DUCT BLACK W/ PURPLE STRIPE  
PHASE II: PULL 1-144F CABLE THRU DUCT BLACK W/ PURPLE STRIPE. REMOVE TEMPORARY 1-72F CABLE FROM DUCT BLACK W/ ORANGE STRIPE.

**CONSTRUCTION NOTES**

- ① CONDUIT OWNER: LEVEL (3)  
CONDUIT LENGTH: 600'  
CONDUIT QTY: 8  
CONDUIT SIZE: 1.5"  
CONDUIT TYPE: SDR-11 HDPE  
NOTES: REMOVED EXIST. 144F CABLE FROM EXIST. CONDUIT
- ② CABLE FIBERS: 72F  
CABLE OWNER: LEVEL (3)  
CABLE LENGTH: 600'  
NOTES: PULL CABLE IN EXIST. 1.5" HDPE
- ③ CABLE FIBERS: 144F  
CABLE OWNER: LEVEL (3)  
CABLE LENGTH: 600'  
NOTES: REMOVED EXIST. 144F CABLE FROM EXIST. CONDUIT
- ④ CABLE FIBERS: 144F  
CABLE OWNER: LEVEL (3)  
CABLE LENGTH: 600'  
NOTES: PHASE II PULL CABLE IN EXIST. 1.5" HDPE
- ⑤ CABLE FIBERS: 72F  
CABLE OWNER: LEVEL (3)  
CABLE LENGTH: 600'  
NOTES: PHASE II REMOVED EXIST. 72F CABLE FROM EXIST. CONDUIT

SEE SHEET 32 TO MATCH SURVEY STA. 2267+00

SEE SHEET 34 TO MATCH SURVEY STA. 2273+00



**SITE PLAN**

NO.	DATE	ENG DESIGN	DRAFTING	CONSTRUCTION	COMMENT
3	03/7/18	GFS	GFS		REVISION
2	08/28/17	GFS	GFS		CONSTRUCTION



LEVEL 3 ENGINEER: KEITH HALL  
ENGINEERING FIRM: GOLDEN FIELD SERVICES  
PROJECT NUMBER: FM 1093 WESTPARK EXTENSION PHASE II  
LOCATION: FULSHEAR, TX

DRAWING NAME: Level 3 Fulshear, TX FM 1093 Westpark Extension Phase II-1-7-18.dwg  
CONFIDENTIAL/PROPRIETARY SHEET: 33 OF 43



SCALE:  
HOR: 1" = 50'  
VERT: 1" = 10'

PHASE 2A Page Rate Card			
Unit Code & Description	Units	Estimated Quantity	Actual Quantity
UGB-30820 - ROD & PROOF EXISTING CONDUIT	FT	600'	-
UGB-30960 - PLACE UP TO 288 COUNT FOC IN CONDUIT, UP TO 1500'(INCL COILS)	FT	600'	-
UGB-30970 - PLACE UP TO 288 COUNT FOC IN CONDUIT, (EACH ADDITIONAL CABLE)	FT	600'	-
UGB-31070 - REMOVE & DISPOSE OF CABLE, EACH ADDITIONAL CABLE	FT	600'	-

FULSHEAR, TX  
FORT BEND COUNTY

**CONSTRUCTION NOTE:**

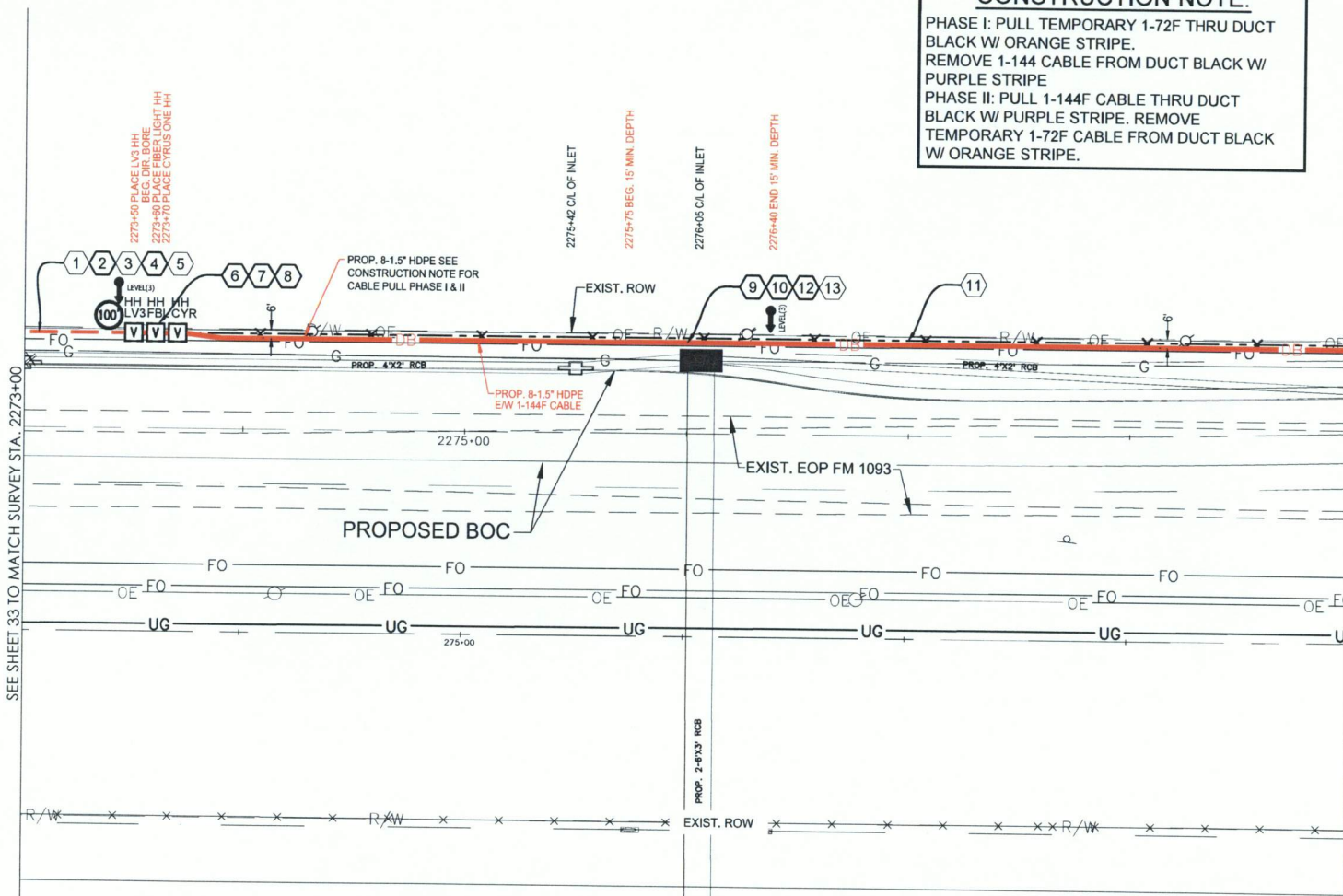
PHASE I: PULL TEMPORARY 1-72F THRU DUCT BLACK W/ ORANGE STRIPE.  
REMOVE 1-144 CABLE FROM DUCT BLACK W/ PURPLE STRIPE  
PHASE II: PULL 1-144F CABLE THRU DUCT BLACK W/ PURPLE STRIPE. REMOVE TEMPORARY 1-72F CABLE FROM DUCT BLACK W/ ORANGE STRIPE.

**CONSTRUCTION NOTES**

- 1 CONDUIT OWNER: LEVEL (3)  
CONDUIT LENGTH: 50'  
CONDUIT QTY: 8  
CONDUIT SIZE: 1.5"  
CONDUIT TYPE: SDR-11 HDPE  
NOTES: REMOVED EXIST. 144F CABLE FROM EXIST. CONDUIT
- 2 CABLE FIBERS: 72F  
CABLE OWNER: LEVEL (3)  
CABLE LENGTH: 150'  
NOTES: PULL CABLE IN EXIST. 1.5" HDPE, LEAVE 100' COIL IN PROP. LEVEL (3) HH
- 3 CABLE FIBERS: 144F  
CABLE OWNER: LEVEL (3)  
CABLE LENGTH: 50'  
NOTES: REMOVED EXIST. 144F CABLE FROM EXIST. CONDUIT
- 4 CABLE FIBERS: 144F  
CABLE OWNER: LEVEL (3)  
CABLE LENGTH: 150'  
NOTES: PHASE II PULL CABLE IN EXIST. 1.5" HDPE, LEAVE 100' COIL IN PROP. LEVEL (3) HH
- 5 CABLE FIBERS: 72F  
CABLE OWNER: LEVEL (3)  
CABLE LENGTH: 150'  
NOTES: PHASE II REMOVED EXIST. 144F CABLE FROM EXIST. CONDUIT
- 6 LEVEL (3) HANDHOLE  
LEAVE 100' COIL IN HH, INTERCEPT EXIST. LEVEL (3) CONDUIT
- 7 FIBERLIGHT HANDHOLE  
NOTE:
- 8 CYRUSONE HANDHOLE  
NOTE:
- 9 CONDUIT OWNER: LEVEL (3)  
CONDUIT LENGTH: 550'  
CONDUIT QTY: 8  
CONDUIT SIZE: 1.5"  
CONDUIT TYPE: SDR-11 HDPE  
NOTES: DIRECTIONAL BORE 8-1.5" HDPE TO BE E/W 1-144F LEVEL (3) CABLE
- 10 CABLE FIBERS: 72F  
CABLE OWNER: LEVEL (3)  
CABLE LENGTH: 550'  
NOTES: PULL CABLE IN NEW 1.5" HDPE
- 11 CABLE FIBERS: 144F  
CABLE OWNER: LEVEL (3)  
CABLE LENGTH: 600'  
NOTES: REMOVED EXIST. 144F CABLE FROM EXIST. CONDUIT
- 12 CABLE FIBERS: 144F  
CABLE OWNER: LEVEL (3)  
CABLE LENGTH: 150'  
NOTES: PHASE II PULL CABLE IN EXIST. 1.5" HDPE
- 13 CABLE FIBERS: 72F  
CABLE OWNER: LEVEL (3)  
CABLE LENGTH: 600'  
NOTES: PHASE II REMOVED EXIST. 72F CABLE FROM EXIST. CONDUIT

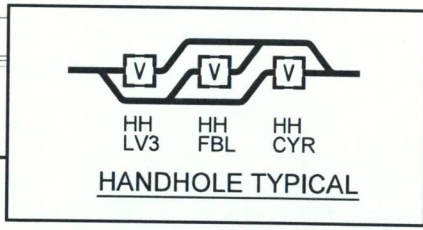
SEE SHEET 33 TO MATCH SURVEY STA. 2273+00

SEE SHEET 35 TO MATCH SURVEY STA. 2279+00



PHASE 2A Page Rate Card

Unit Code & Description	Units	Estimated Quantity	Actual Quantity
UGB-30700 - DIR. BORE GREATER THAN 1500'; ADDITIONAL HDPE CONDUIT UP TO 2" (5 OF 8)	FT	2,750'	-
UGB-30710 - DIR. BORE GREATER THAN 1500'; 3 HDPE CONDUIT UP TO 2" (3 OF 8)	FT	550'	-
UGB-30820 - ROD & PROOF EXISTING CONDUIT/ROD & PROOF EXISTING CONDUIT	FT	50'	-
UGB-30960 - PLACE UP TO 288 COUNT FOC IN CONDUIT, UP TO 1500'(INCL COILS)	FT	700'	-
UGB-30970 - PLACE UP TO 288 COUNT FOC IN CONDUIT, (EACH ADDITIONAL CABLE)	FT	700'	-
UGB-31070 - REMOVE & DISPOSE OF CABLE, EACH ADDITIONAL CABLE	FT	700'	-
UGB-31280 - Place New 30"X60"X36" Non-Concrete Manhole/Handhole	EA	3	-
UGB-32000 - PLACE LOCATE TEST STATION	EA	1	-
MAT-90070 - Conduit: 1 1/2" HDPE SDR-11	FT	4400'	-
MAT-90980 - TIER 15 - 30"X60"X36" - WITH KNOCK-OUTS AND RACKING	EA	3	-
MAT-92080 - TEST STATIONS - MARKER POST W/ REMOVABLE TOP	EA	1	-



SCALE:  
HORI: 1" = 50'  
VERT: 1" = 10'

**SITE PLAN**

3	03/7/18	GFS	GFS	REVISION
1	06/28/17	GFS	GFS	CONSTRUCTION
NO.	DATE	ENG DESIGN	DRAFTING	COMMENT

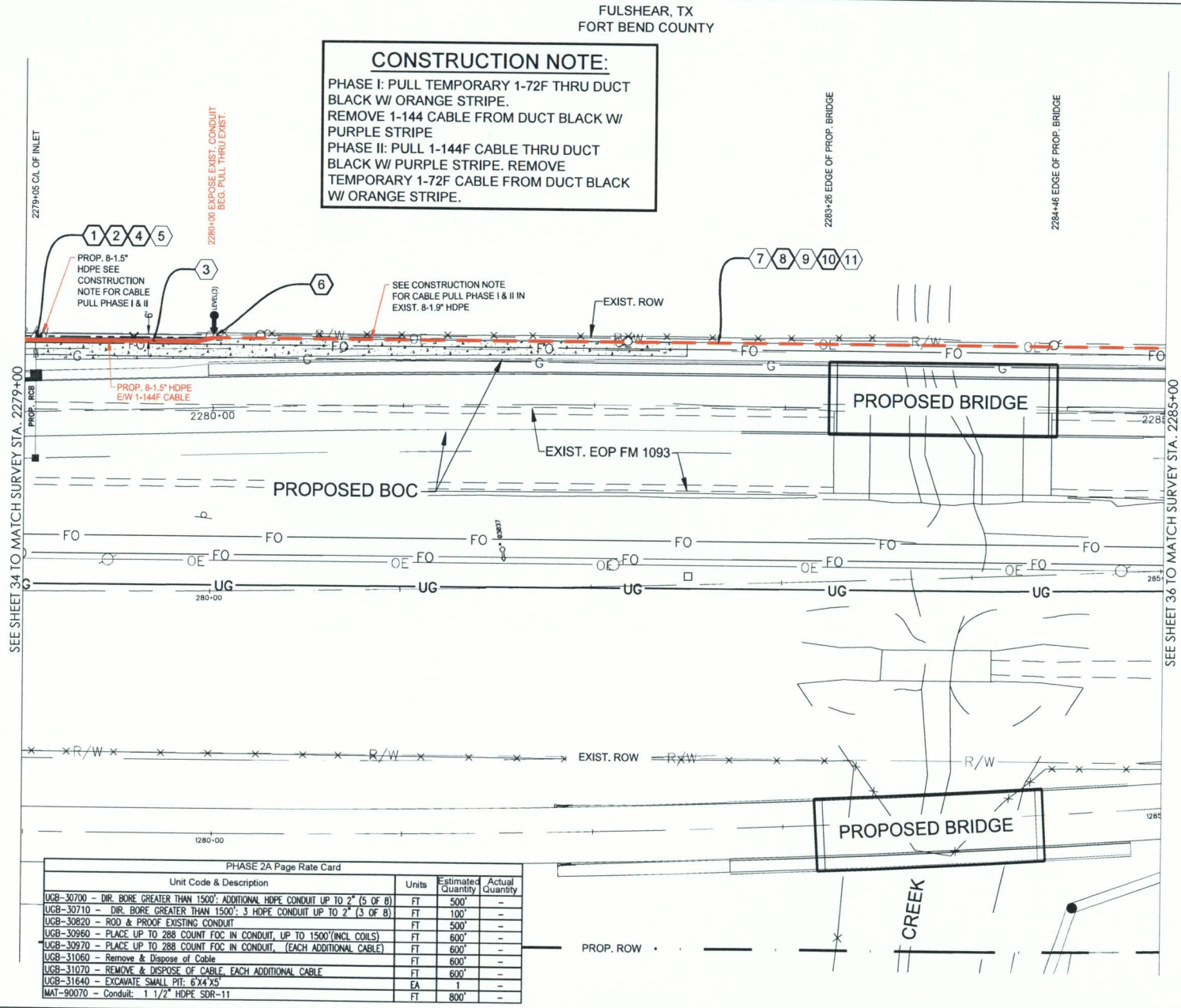


LEVEL 3 ENGINEER: KEITH HALL  
ENGINEERING FIRM: GOLDEN FIELD SERVICES  
PROJECT NUMBER: FM 1093 WESTPARK EXTENSION PHASE II  
LOCATION: FULSHEAR, TX  
DRAWING NAME: Level 3 Fulshear, TX FM 1093 Westpark Extension Phase II-1-18.dwg  
CONFIDENTIAL/PROPRIETARY SHEET: 34 OF 43

FULSHEAR, TX  
FORT BEND COUNTY

**CONSTRUCTION NOTE:**

PHASE I: PULL TEMPORARY 1-72F THRU DUCT BLACK W/ ORANGE STRIPE.  
REMOVE 1-144 CABLE FROM DUCT BLACK W/ PURPLE STRIPE  
PHASE II: PULL 1-144F CABLE THRU DUCT BLACK W/ PURPLE STRIPE. REMOVE TEMPORARY 1-72F CABLE FROM DUCT BLACK W/ ORANGE STRIPE.



**CONSTRUCTION NOTES**

- 1 CONDUIT OWNER: LEVEL (3)  
CONDUIT LENGTH: 100'  
CONDUIT QTY: 8  
CONDUIT SIZE: 1.5"  
CONDUIT TYPE: SDR-11 HDPE  
NOTES: DIRECTIONAL BORE 8-1.5" HDPE TO BE E/W 1-144F LEVEL (3) CABLE
- 2 CABLE FIBERS: 72F  
CABLE OWNER: LEVEL (3)  
CABLE LENGTH: 100'  
NOTES: PULL CABLE IN NEW 1.5" HDPE
- 3 CABLE FIBERS: 144F  
CABLE OWNER: LEVEL (3)  
CABLE LENGTH: 600'  
NOTES: REMOVED EXIST. 144F CABLE FROM EXIST. CONDUIT
- 4 CABLE FIBERS: 144F  
CABLE OWNER: LEVEL (3)  
CABLE LENGTH: 100'  
NOTES: PHASE II PULL CABLE IN NEW 1.5" HDPE
- 5 CABLE FIBERS: 72F  
CABLE OWNER: LEVEL (3)  
CABLE LENGTH: 600'  
NOTES: PHASE II REMOVED EXIST. 72F CABLE FROM EXIST. CONDUIT
- 6 INTERCEPT EXIST. LEVEL (3) CONDUIT
- 7 CONDUIT OWNER: LEVEL (3)  
CONDUIT LENGTH: 500'  
CONDUIT QTY: 8  
CONDUIT SIZE: 1.5"  
CONDUIT TYPE: SDR-11 HDPE  
NOTES: REMOVED EXIST. 144F CABLE FROM EXIST. CONDUIT
- 8 CABLE FIBERS: 72F  
CABLE OWNER: LEVEL (3)  
CABLE LENGTH: 500'  
NOTES: PULL CABLE IN EXIST 1.5" HDPE
- 9 CABLE FIBERS: 144F  
CABLE OWNER: LEVEL (3)  
CABLE LENGTH: 500'  
NOTES: REMOVED EXIST. 144F CABLE FROM EXIST. CONDUIT
- 10 CABLE FIBERS: 144F  
CABLE OWNER: LEVEL (3)  
CABLE LENGTH: 500'  
NOTES: PHASE II PULL CABLE IN EXIST 1.5" HDPE
- 11 CABLE FIBERS: 72F  
CABLE OWNER: LEVEL (3)  
CABLE LENGTH: 500'  
NOTES: PHASE II REMOVED EXIST. 72F CABLE FROM EXIST. CONDUIT

**SITE PLAN**

PHASE 2A Page Rate Card

Unit Code & Description	Units	Estimated Quantity	Actual Quantity
UGB-30700 - DIR. BORE GREATER THAN 1500'; ADDITIONAL HDPE CONDUIT UP TO 2" (5 OF 8)	FT	500'	-
UGB-30710 - DIR. BORE GREATER THAN 1500'; 3 HDPE CONDUIT UP TO 2" (3 OF 8)	FT	100'	-
UGB-30820 - ROD & PROOF EXISTING CONDUIT	FT	500'	-
UGB-30960 - PLACE UP TO 288 COUNT FOC IN CONDUIT, UP TO 1500'(INCL COILS)	FT	600'	-
UGB-30970 - PLACE UP TO 288 COUNT FOC IN CONDUIT, (EACH ADDITIONAL CABLE)	FT	600'	-
UGB-31060 - Remove & Dispose of Cable	FT	600'	-
UGB-31070 - REMOVE & DISPOSE OF CABLE, EACH ADDITIONAL CABLE	FT	600'	-
UGB-31640 - EXCAVATE SMALL PIT: 6'X4'X5'	EA	1	-
IMAT-90070 - Conduit: 1 1/2" HDPE SDR-11	FT	800'	-



SCALE:  
HORI: 1" = 50'  
VERT: 1" = 10'

3				
2	03/7/18	GFS	GFS	REVISION
1	06/28/17	GFS	GFS	CONSTRUCTION
NO.	DATE	ENG DESIGN	DRAFTING	COMMENT

**Level(3)**  
COMMUNICATIONS

LEVEL 3 ENGINEER: KEITH HALL  
ENGINEERING FIRM: GOLDEN FIELD SERVICES  
PROJECT NUMBER: FM 1093 WESTPARK EXTENSION PHASE II  
LOCATION: FULSHEAR, TX

DRAWING NAME: Level 3 Fulshear, TX FM 1093 Westpark Extension Phase II-17-18.dwg  
CONFIDENTIAL/PROPRIETARY SHEET: 35 OF 43

FULSHEAR, TX  
FORT BEND COUNTY

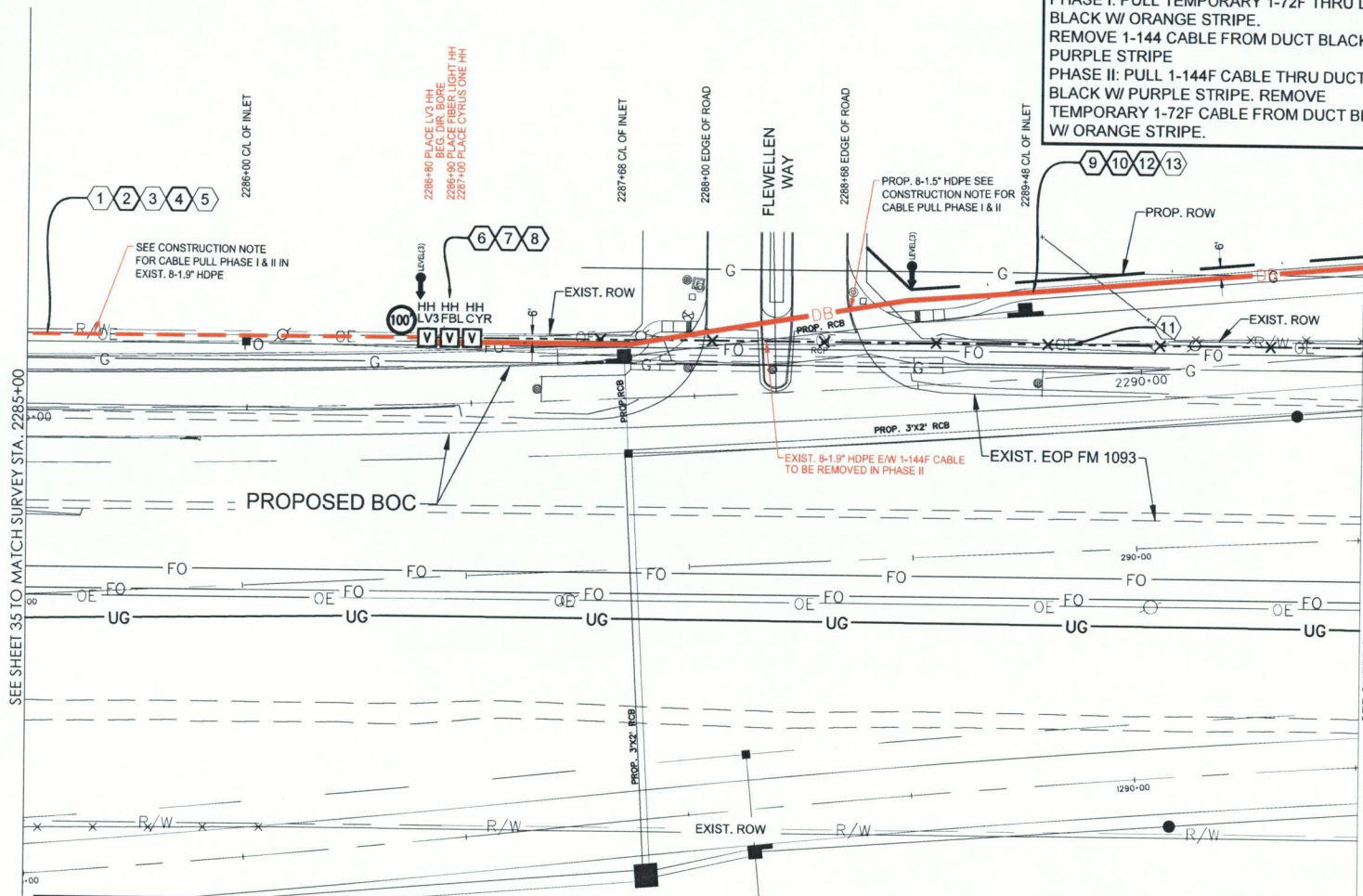
**CONSTRUCTION NOTE:**

PHASE I: PULL TEMPORARY 1-72F THRU DUCT BLACK W/ ORANGE STRIPE.  
REMOVE 1-144 CABLE FROM DUCT BLACK W/ PURPLE STRIPE  
PHASE II: PULL 1-144F CABLE THRU DUCT BLACK W/ PURPLE STRIPE. REMOVE TEMPORARY 1-72F CABLE FROM DUCT BLACK W/ ORANGE STRIPE.

**CONSTRUCTION NOTES**

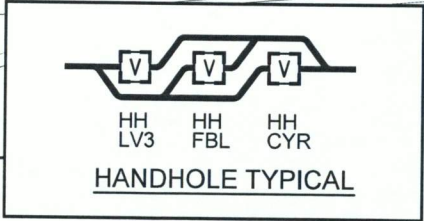
- 1 CONDUIT OWNER: LEVEL (3)  
CONDUIT LENGTH: 180'  
CONDUIT QTY: 8  
CONDUIT SIZE: 1.5"  
CONDUIT TYPE: SDR-11 HDPE  
NOTES: REMOVED EXIST. 144F CABLE FROM EXIST. CONDUIT
- 2 CABLE FIBERS: 72F  
CABLE OWNER: LEVEL (3)  
CABLE LENGTH: 280'  
NOTES: PULL CABLE IN EXIST. 1.5" HDPE, LEAVE 100' COIL IN PROP. LEVEL (3) HH
- 3 CABLE FIBERS: 144F  
CABLE OWNER: LEVEL (3)  
CABLE LENGTH: 180'  
NOTES: REMOVED EXIST. 144F CABLE FROM EXIST. CONDUIT
- 4 CABLE FIBERS: 144F  
CABLE OWNER: LEVEL (3)  
CABLE LENGTH: 280'  
NOTES: PHASE II PULL CABLE IN EXIST. 1.5" HDPE, LEAVE 100' COIL IN PROP. LEVEL (3) HH
- 5 CABLE FIBERS: 72F  
CABLE OWNER: LEVEL (3)  
CABLE LENGTH: 280'  
NOTES: PHASE II REMOVED EXIST. 144F CABLE FROM EXIST. CONDUIT
- 6 LEVEL (3) HANDHOLE  
LEAVE 100' COIL IN HH, INTERCEPT EXIST. LEVEL (3) CONDUIT
- 7 FIBERLIGHT HANDHOLE  
NOTE:  
CYRUSONE HANDHOLE  
NOTE:
- 9 CONDUIT OWNER: LEVEL (3)  
CONDUIT LENGTH: 420'  
CONDUIT QTY: 8  
CONDUIT SIZE: 1.5"  
CONDUIT TYPE: SDR-11 HDPE  
NOTES: DIRECTIONAL BORE 8-1.5" HDPE TO BE E/W 1-144F LEVEL (3) CABLE
- 10 CABLE FIBERS: 72F  
CABLE OWNER: LEVEL (3)  
CABLE LENGTH: 420'  
NOTES: PULL CABLE IN NEW 1.5" HDPE
- 11 CABLE FIBERS: 144F  
CABLE OWNER: LEVEL (3)  
CABLE LENGTH: 420'  
NOTES: REMOVED EXIST. 144F CABLE FROM EXIST. CONDUIT
- 12 CABLE FIBERS: 144F  
CABLE OWNER: LEVEL (3)  
CABLE LENGTH: 420'  
NOTES: PHASE II PULL CABLE IN EXIST. 1.5" HDPE
- 13 CABLE FIBERS: 72F  
CABLE OWNER: LEVEL (3)  
CABLE LENGTH: 420'  
NOTES: PHASE II REMOVED EXIST. 72F CABLE FROM EXIST. CONDUIT

**SITE PLAN**



SEE SHEET 35 TO MATCH SURVEY STA. 2285+00

SEE SHEET 37 TO MATCH SURVEY STA. 2291+00



PHASE 2A Page Rate Card

Unit Code & Description	Units	Estimated Quantity	Actual Quantity
UGB-30700 - DIR. BORE GREATER THAN 1500'; ADDITIONAL HDPE CONDUIT UP TO 2" (5 OF 8)	FT	2,600'	-
UGB-30710 - DIR. BORE GREATER THAN 1500'; 3 HDPE CONDUIT UP TO 2" (3 OF 8)	FT	520'	-
UGB-30820 - ROD & PROOF EXISTING CONDUIT/ROD & PROOF EXISTING CONDUIT	FT	180'	-
UGB-30960 - PLACE UP TO 288 COUNT FOC IN CONDUIT, UP TO 1500'(INCL COILS)	FT	700'	-
UGB-30970 - PLACE UP TO 288 COUNT FOC IN CONDUIT, (EACH ADDITIONAL CABLE)	FT	700'	-
UGB-31070 - REMOVE & DISPOSE OF CABLE, EACH ADDITIONAL CABLE	FT	700'	-
UGB-31280 - Place New 30"x60"x36" Non-Concrete Manhole/Handhole	EA	3	-
UGB-32000 - PLACE LOCATE TEST STATION	EA	1	-
MAT-90070 - Conduit: 1 1/2" HDPE SDR-11	FT	4160'	-
MAT-90980 - TIER 15 - 30"x60"x36" - WITH KNOCK-OUTS AND BACKING	EA	3	-
MAT-92080 - TEST STATIONS - MARKER POST W/ REMOVABLE TOP	EA	1	-



SCALE:  
HORI: 1" = 50'  
VERT: 1" = 10'

NO.	DATE	ENG DESIGN	DRAFTING	COMMENT
3	03/7/18	GFS	GFS	REVISION
1	06/28/17	GFS	GFS	CONSTRUCTION

**Level(3)**  
COMMUNICATIONS

LEVEL 3 ENGINEER: KEITH HALL  
ENGINEERING FIRM: GOLDEN FIELD SERVICES  
PROJECT NUMBER: FM 1093 WESTPARK EXTENSION PHASE II  
LOCATION: FULSHEAR, TX

DRAWING NAME: Level 3 Fulshear, TX FM 1093 Westpark Extension Phase II-1-7-18.dwg  
CONFIDENTIAL/PROPRIETARY SHEET: 36 OF 43

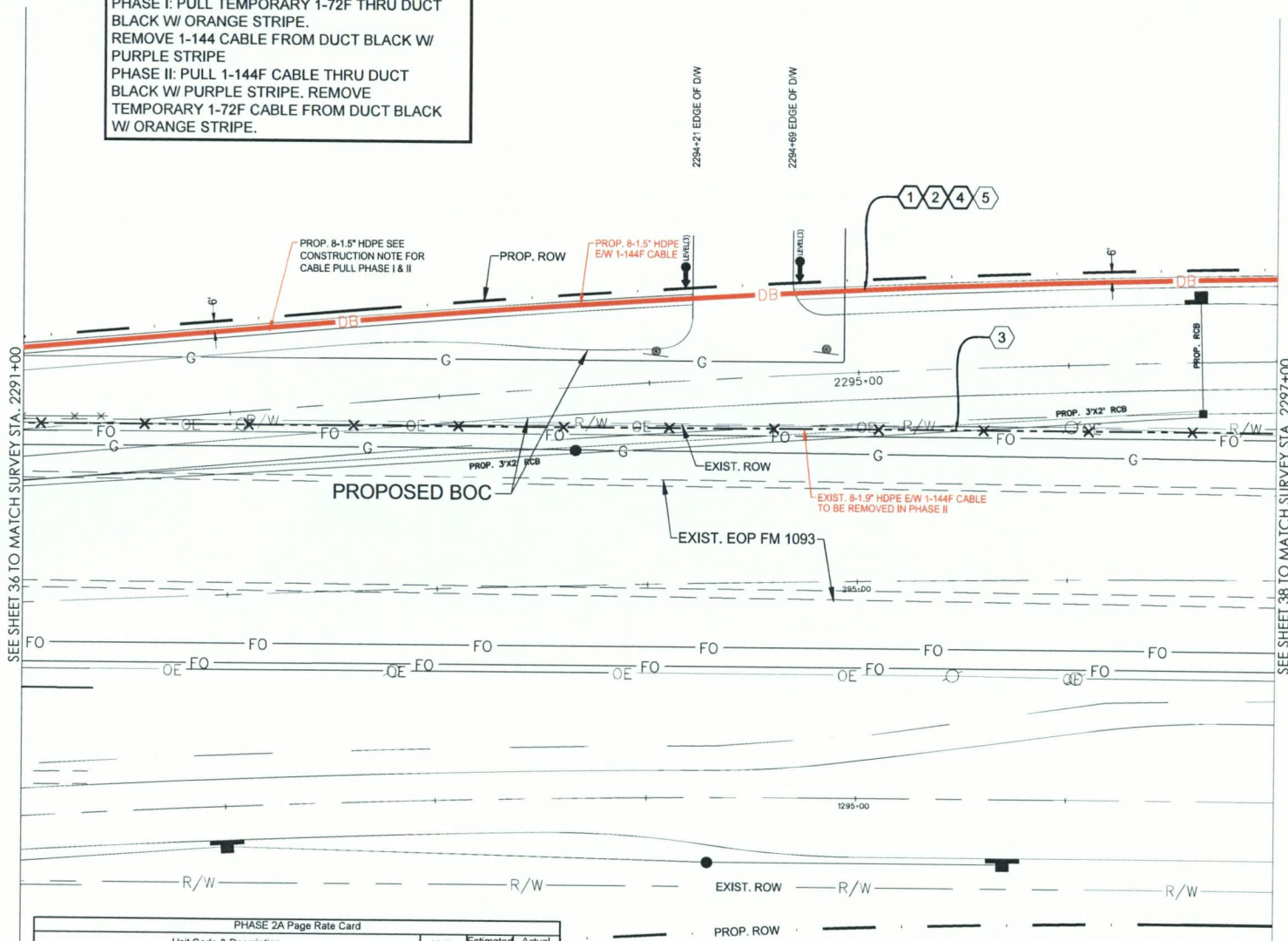
FULSHEAR, TX  
FORT BEND COUNTY

**CONSTRUCTION NOTE:**

PHASE I: PULL TEMPORARY 1-72F THRU DUCT BLACK W/ ORANGE STRIPE.  
REMOVE 1-144 CABLE FROM DUCT BLACK W/ PURPLE STRIPE  
PHASE II: PULL 1-144F CABLE THRU DUCT BLACK W/ PURPLE STRIPE. REMOVE TEMPORARY 1-72F CABLE FROM DUCT BLACK W/ ORANGE STRIPE.

**CONSTRUCTION NOTES**

- ① CONDUIT OWNER: LEVEL (3)  
CONDUIT LENGTH: 600'  
CONDUIT QTY: 8  
CONDUIT SIZE: 1.5"  
CONDUIT TYPE: SDR-11 HDPE  
NOTES: DIRECTIONAL BORE 8-1.5" HDPE TO BE E/W 1-144F LEVEL (3) CABLE
- ② CABLE FIBERS: 72F  
CABLE OWNER: LEVEL (3)  
CABLE LENGTH: 600'  
NOTES: PULL CABLE IN NEW 1.5" HDPE
- ③ CABLE FIBERS: 144F  
CABLE OWNER: LEVEL (3)  
CABLE LENGTH: 600'  
NOTES: REMOVED EXIST. 144F CABLE FROM EXIST. CONDUIT
- ④ CABLE FIBERS: 144F  
CABLE OWNER: LEVEL (3)  
CABLE LENGTH: 600'  
NOTES: PHASE II PULL CABLE IN NEW 1.5" HDPE
- ⑤ CABLE FIBERS: 72F  
CABLE OWNER: LEVEL (3)  
CABLE LENGTH: 600'  
NOTES: REMOVED EXIST. 72F CABLE FROM EXIST. CONDUIT



SEE SHEET 36 TO MATCH SURVEY STA. 2291+00

SEE SHEET 38 TO MATCH SURVEY STA. 2297+00

PHASE 2A Page Rate Card

Unit Code & Description	Units	Estimated Quantity	Actual Quantity
UGB-30700 - DIR. BORE GREATER THAN 1500'; ADDITIONAL HDPE CONDUIT UP TO 2" (5 OF 8)	FT	3,000'	-
UGB-30710 - DIR. BORE GREATER THAN 1500'; 3 HDPE CONDUIT UP TO 2" (3 OF 8)	FT	600'	-
UGB-30960 - PLACE UP TO 288 COUNT FOC IN CONDUIT, UP TO 1500'(INCL COILS)	FT	600'	-
UGB-30970 - PLACE UP TO 288 COUNT FOC IN CONDUIT, (EACH ADDITIONAL CABLE)	FT	600'	-
UGB-31060 - REMOVE & DISPOSE OF CABLE	FT	600'	-
UGB-31070 - REMOVE & DISPOSE OF CABLE, EACH ADDITIONAL CABLE	FT	600'	-
MAT-90070 - CONDUIT: 1 1/2" HDPE SDR-11	FT	4800'	-

**SITE PLAN**

NO.	DATE	ENG DESIGN	DRAFTING	REVISION	COMMENT
3	03/7/18	GFS	GFS		REVISION
1	06/28/17	GFS	GFS		CONSTRUCTION



LEVEL 3 ENGINEER: KEITH HALL  
ENGINEERING FIRM: GOLDEN FIELD SERVICES  
PROJECT NUMBER: FM 1093 WESTPARK EXTENSION PHASE II  
LOCATION: FULSHEAR, TX

SCALE:  
HOR: 1" = 50'  
VERT: 1" = 10'

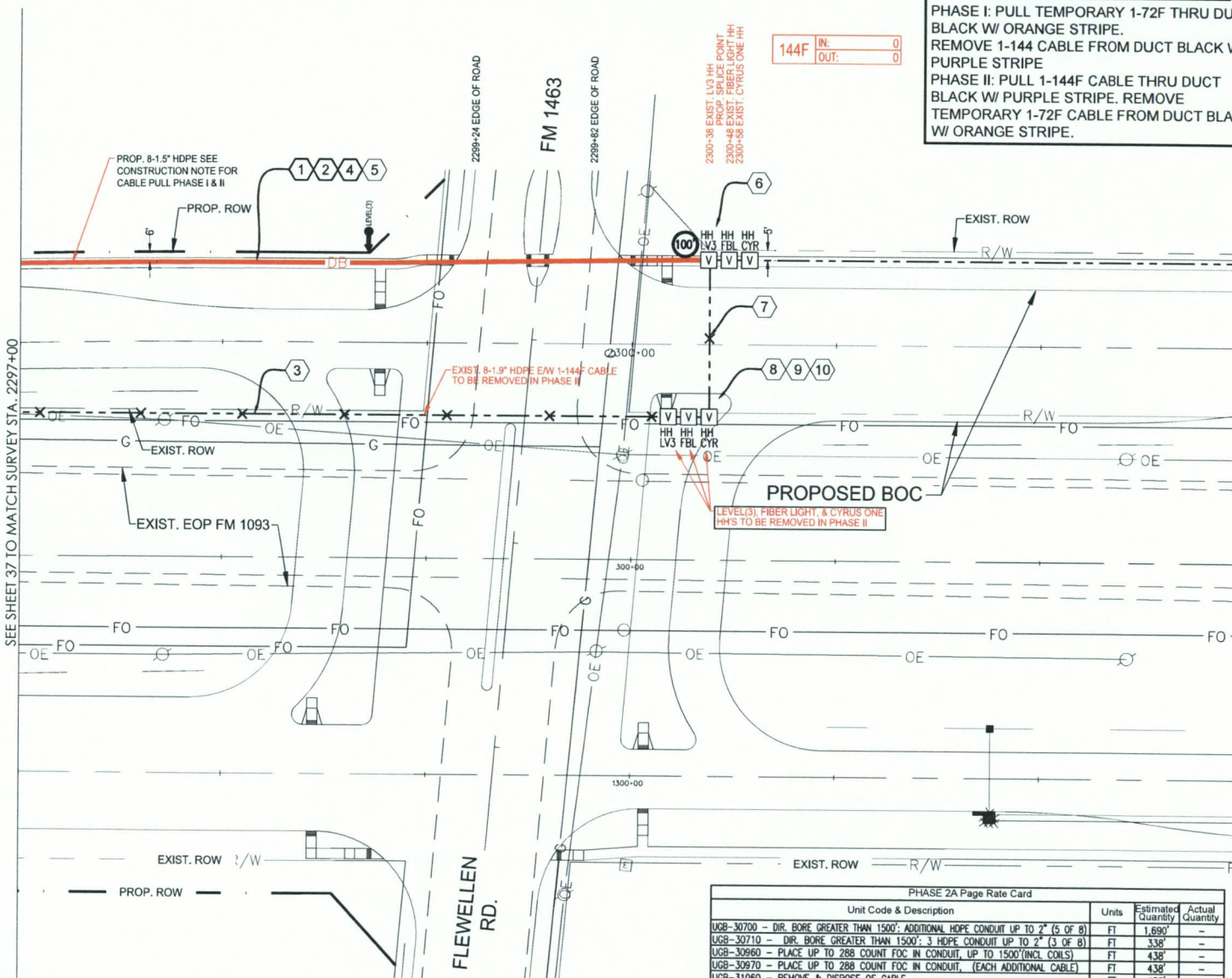
DRAWING NAME: Level 3 FulShear, TX FM 1093 Westpark Extension Phase II-1-2-18.dwg  
CONFIDENTIAL/PROPRIETARY SHEET: 37 OF 43

FULSHEAR, TX  
FORT BEND COUNTY

**CONSTRUCTION NOTE:**

PHASE I: PULL TEMPORARY 1-72F THRU DUCT BLACK W/ ORANGE STRIPE.  
REMOVE 1-144F CABLE FROM DUCT BLACK W/ PURPLE STRIPE  
PHASE II: PULL 1-144F CABLE THRU DUCT BLACK W/ PURPLE STRIPE. REMOVE TEMPORARY 1-72F CABLE FROM DUCT BLACK W/ ORANGE STRIPE.

144F IN: 0  
OUT: 0



SEE SHEET 37 TO MATCH SURVEY STA. 2297+00

PHASE 2A Page Rate Card

Unit Code & Description	Units	Estimated Quantity	Actual Quantity
UGB-30700 - DIR. BORE GREATER THAN 1500'; ADDITIONAL HDPE CONDUIT UP TO 2" (5 OF 8)	FT	1,690'	-
UGB-30710 - DIR. BORE GREATER THAN 1500'; 3 HDPE CONDUIT UP TO 2" (3 OF 8)	FT	338'	-
UGB-30960 - PLACE UP TO 288 COUNT FOC IN CONDUIT, UP TO 1500'(INCL CONLS)	FT	438'	-
UGB-30970 - PLACE UP TO 288 COUNT FOC IN CONDUIT, (EACH ADDITIONAL CABLE)	FT	438'	-
UGB-31060 - REMOVE & DISPOSE OF CABLE	FT	438'	-
UGB-31070 - REMOVE & DISPOSE OF CABLE, EACH ADDITIONAL CABLE	FT	438'	-
UGB-31360 - REMOVE EXISTING - 30"x60"x36" NON-CONCRETE MANHOLE/HANDHOLE	EA	3	-
MAT-90070 - CONDUIT: 1 1/2" HDPE SDR-11	FT	2704'	-



SCALE:  
HORI: 1" = 50'  
VERT: 1" = 10'

**CONSTRUCTION NOTES**

- 1 CONDUIT OWNER: LEVEL (3)  
CONDUIT LENGTH: 338'  
CONDUIT QTY: 8  
CONDUIT SIZE: 1.5"  
CONDUIT TYPE: SDR-11 HDPE  
NOTES: DIRECTIONAL BORE 8-1.5" HDPE TO BE E/W 1-144F LEVEL (3) CABLE
- 2 CABLE FIBERS: 72F  
CABLE OWNER: LEVEL (3)  
CABLE LENGTH: 438'  
NOTES: PULL CABLE IN NEW 1.5" HDPE, LEAVE 100' COIL IN EXIST. LEVEL (3) HH FOR SPLICE
- 3 CABLE FIBERS: 144F  
CABLE OWNER: LEVEL (3)  
CABLE LENGTH: 438'  
NOTES: REMOVED EXIST. 144F CABLE FROM EXIST. CONDUIT
- 4 CABLE FIBERS: 144F  
CABLE OWNER: LEVEL (3)  
CABLE LENGTH: 438'  
NOTES: PHASE II PULL CABLE IN NEW 1.5" HDPE, LEAVE 100' COIL IN EXIST. LEVEL (3) HH FOR SPLICE
- 5 CABLE FIBERS: 72F  
CABLE OWNER: LEVEL (3)  
CABLE LENGTH: 438'  
NOTES: PHASE II REMOVED EXIST. 72F CABLE FROM EXIST. CONDUIT
- 6 EXISTING LEVEL (3) HANDHOLE  
NOTE: LEAVE 100' COIL IN HH FOR SPLICE
- 7 PHASE II  
CONDUIT OWNER: LEVEL (3)  
CONDUIT LENGTH: 77'  
CONDUIT QTY: 8  
CONDUIT SIZE: 1.9"  
CONDUIT TYPE: HDPE  
NOTES: REMOVED EXIST. 144F CABLE FROM CONDUIT
- 8 PHASE II  
EXISTING LEVEL (3) HANDHOLE  
NOTE: TO BE REMOVED
- 9 PHASE II  
EXISTING FIBERLIGHT HANDHOLE  
NOTE: TO BE REMOVED
- 10 PHASE II  
EXISTING CYRUSONE HANDHOLE  
NOTE: TO BE REMOVED

**SITE PLAN**

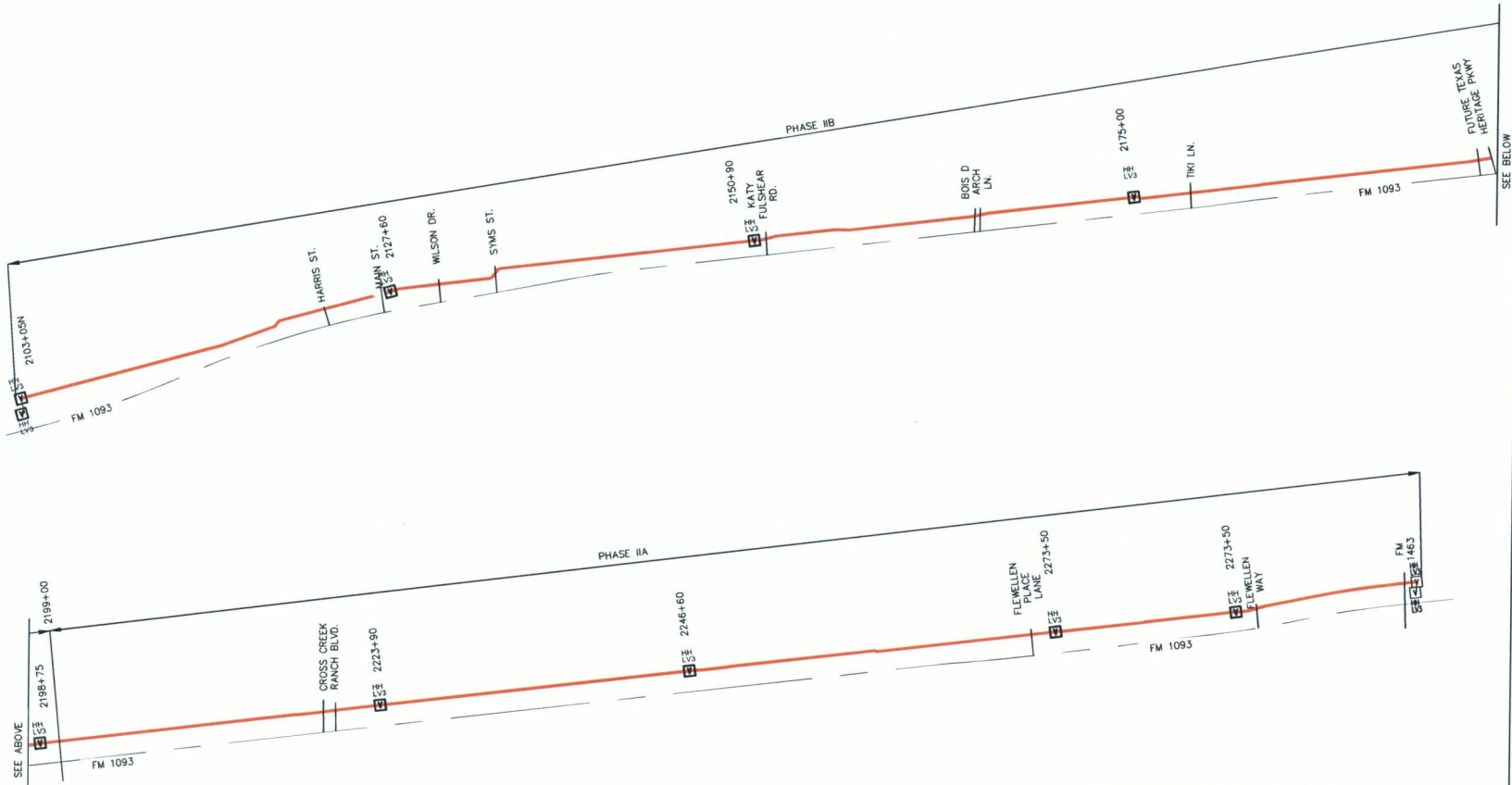
NO.	DATE	ENG DESIGN	DRAFTING	CONSTRUCTION	REVISION	COMMENT
3	03/7/18	GFS	GFS			
2	06/28/17	GFS	GFS			
1						

**Level(3)**  
COMMUNICATIONS

LEVEL 3 ENGINEER: KEITH HALL  
ENGINEERING FIRM: GOLDEN FIELD SERVICES  
PROJECT NUMBER: FM 1093 WESTPARK EXTENSION PHASE II  
LOCATION: FULSHEAR, TX

DRAWING NAME: Level 3 Fulshear, TX FM 1093 Westpark Extension Phase II-17-18.dwg  
CONFIDENTIAL/PROPRIETARY

# CABLE PULL SCHEMATIC NOT TO SCALE



**CONSTRUCTION NOTE:**

PHASE I: PULL TEMPORARY 1-72F THRU DUCT BLACK W/ ORANGE STRIPE. REMOVE 1-144 CABLE FROM DUCT BLACK W/ PURPLE STRIPE

PHASE II: PULL 1-144F CABLE THRU DUCT BLACK W/ PURPLE STRIPE. REMOVE TEMPORARY 1-72F CABLE FROM DUCT BLACK W/ ORANGE STRIPE.

NO.	DATE	ENG DESIGN	DRAFTING	COMMENT
3				REVISION
2	03/7/18	GFS	GFS	
1	06/28/17	GFS	GFS	CONSTRUCTION

**Level(3)**  
COMMUNICATIONS

LEVEL 3 ENGINEER: KEITH HALL  
 ENGINEERING FIRM: GOLDEN FIELD SERVICES  
 PROJECT NUMBER: FM 1093 WESTPARK EXTENSION PHASE II  
 LOCATION: FULSHEAR, TX

DRAWING NAME: Level 3 Fulshear, TX FM 1093 Westpark Extension Phase II-17-18.dwg  
 CONFIDENTIAL/PROPRIETARY

PHASE 2A Page Rate Card			
Unit Code & Description	Units	Estimated Quantity	Actual Quantity
UGB-30700 - DIR. BORE GREATER THAN 1500': ADDITIONAL HDPE CONDUIT UP TO 2" (5 OF 8)	FT	41,315	-
UGB-30710 - DIR. BORE GREATER THAN 1500': 3 HDPE CONDUIT UP TO 2" (3 OF 8)	FT	8,263	-
UGB-30820 - ROD & PROOF EXISTING CONDUIT	FT	2,000	-
UGB-30960 - PLACE UP TO 288 COUNT FOC IN CONDUIT, UP TO 1500'(INCL COILS)	FT	10,663	-
UGB-30970 - PLACE UP TO 288 COUNT FOC IN CONDUIT, (EACH ADDITIONAL CABLE)	FT	10,663	-
UGB-31060 - REMOVE & DISPOSE OF CABLE	FT	7,863	-
UGB-31070 - REMOVE & DISPOSE OF CABLE, EACH ADDITIONAL CABLE	FT	10,663	-
UGB-31280 - PLACE NEW 30"x60"x36" NON-CONCRETE MANHOLE/HANDHOLE	EA	12	-
UGB-31360 - REMOVE & REPLACE EXISTING - 30"x60"x36" - NON-CONCRETE MH/HH	EA	4	-
UGB-31640 - EXCAVATE SMALL PIT: 6'X4'X5'	EA	2	-
UGB-32000 - PLACE LOCATE TEST STATION	EA	4	-
MAT-90070 - CONDUIT: 1 1/2" HDPE SDR-11	FT	66,104	-
MAT-90980 - TIER 15 - 30"x60"x36" - WITH KNOCK-OUTS AND RACKING	EA	8	-
MAT-92080 - TEST STATIONS - MARKER POST W/ REMOVABLE TOP	EA	4	-

PHASE 2B Page Rate Card			
Unit Code & Description	Units	Estimated Quantity	Actual Quantity
UGB-30010 - TRENCH UP TO 1500': TRENCH 36" MINIMUM COVER	FT	135	-
UGB-30150 - PLACE ADDITIONAL HDPE IN OPEN TRENCH CONDUIT UP TO 2"	FT	675	-
UGB-30160 - PLACE 3 - HDPE CONDUITS IN OPEN TRENCH UP TO 2"	FT	135	-
UGB-30700 - DIR. BORE GREATER THAN 1500': ADDITIONAL HDPE CONDUIT UP TO 2" (5 OF 8)	FT	34,550	-
UGB-30710 - DIR. BORE GREATER THAN 1500': 3 HDPE CONDUIT UP TO 2" (3 OF 8)	FT	7,130	-
UGB-30820 - ROD & PROOF EXISTING CONDUIT	FT	2,405	-
UGB-30960 - PLACE UP TO 288 COUNT FOC IN CONDUIT, UP TO 1500'(INCL COILS)	FT	10,270	-
UGB-30970 - PLACE UP TO 288 COUNT FOC IN CONDUIT, (EACH ADDITIONAL CABLE)	FT	10,270	-
UGB-31060 - REMOVE & DISPOSE OF CABLE	FT	9,101	-
UGB-31070 - REMOVE & DISPOSE OF CABLE, EACH ADDITIONAL CABLE	FT	10,170	-
UGB-31280 - PLACE NEW 30"x60"x36" NON-CONCRETE MANHOLE/HANDHOLE	EA	15	-
UGB-31470 - REMOVE & REPLACE EXISTING - 30"x60"x36" - NON-CONCRETE MH/HH	EA	2	-
UGB-31640 - EXCAVATE SMALL PIT: 6'X4'X5'	EA	2	-
UGB-32000 - PLACE LOCATE TEST STATION	EA	6	-
MAT-90070 - CONDUIT: 1 1/2" HDPE SDR-11	FT	58,120	-
MAT-90980 - TIER 15 - 30"x60"x36" - WITH KNOCK-OUTS AND RACKING	EA	9	-
MAT-92080 - TEST STATIONS - MARKER POST W/ REMOVABLE TOP	EA	6	-

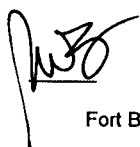
3				
2	03/7/18	GFS	GFS	REVISION
1	06/28/17	GFS	GFS	CONSTRUCTION
NO.	DATE	ENG DESIGN	DRAFTING	COMMENT


**Level(3)**  
COMMUNICATIONS

LEVEL 3 ENGINEER: KEITH HALL  
 ENGINEERING FIRM: GOLDEN FIELD SERVICES  
 PROJECT NUMBER: FM 1093 WESTPARK EXTENSION PHASE II  
 LOCATION: FULSHEAR, TX  
 DRAWING NAME: Level 3 Fulshear, TX FM 1093 Westpark Extension Phase II-1-7-18.dwg  
 CONFIDENTIAL/PROPRIETARY SHEET: 43 OF 43

# Exhibit B

## Construction Cost Estimate

  
Date 9/17/18  
Fort Bend County

  
Initial KT  
Date 7/25/18  
CyrusOne

<b>Sow</b>	FM 1093 and		
<b>Description</b>	Relocation		
<b>Market</b>	TX, Houston		
<b>PA</b>	151200	4 conduits	
<b>Task</b>	<b>Online Directional Boring</b>	<b>Cyrus One</b>	<b>Cost Breakdown</b>
UGB-30700:UGB:Directional Bore Greater Than 1500':Directional Bore greater than 1500': Additional HDPE conduit up to 2"	\$ 101,221.75	\$ 50,610.88	Cost divided via pro-rata
UGB-30710:UGB:Directional Bore Greater Than 1500':Directional Bore greater than 1500': 3 HDPE conduits up to 2" (on one reel)	\$ 156,997.00	\$ 78,498.50	Cost divided via pro-rata
UGB-31280:UGB:Handhole / Manhole Excavation & Placement:Place New - 30"x60"x36" - Non-concrete Manhole / Handhole	\$ 9,072.00	\$ 2,268.00	Costs divided 4 ways.
UGB-31360:UGB:Handhole / Manhole Excavation & Placement:Remove Existing - 24"x36"x36" - Non-concrete Manhole / Handhole	\$ 1,158.00	\$ 289.50	Costs divided 4 ways.
UGB-31640:UGB:Pits:Excavate Small Pit: 6'x4'x5'	\$ 1,670.00	\$ 835.00	Cost divided via pro-rata
MAT-90070:MAT:Conduit :Conduit: 1 1/4" HDPE SDR-11	\$ 34,374.08	\$ 17,187.04	Cost divided via pro-rata
MAT-90980:MAT:Handhole / Manhole:Tier 15 30"x60"x36" - With knock-outs and racking - Including Cover	\$ 12,750.00	\$ 3,187.50	Costs divided 4 ways.
<b>Total</b>	<b>\$ 317,242.83</b>	<b>\$ 152,876.42</b>	
<b>Fort Bend County Reimbursement (50%)</b>	<b>\$ 158,621.42</b>	<b>\$ 76,438.21</b>	

# Exhibit C


## Schedule of Work and Estimated Dates of Completion

(As Shown Below)

### Construction Schedule:

Begin Construction: April 2, 2018  
Complete Construction: May 31, 2018

 9/17/18  
Date  
Fort Bend County

 7/25/18  
Initial Date  
CyrusOne