



**REVIEW BY FORT BEND COUNTY
COMMISSIONERS COURT**

**Fort Bend County
Engineering Department**
301 Jackson Suite 401
Richmond, Texas 77469
281.633.7500
Permits@fortbendcountytx.gov

- Right of Way Permit
- Commercial Driveway Permit

Permit No: 2018-22030

Applicant: MCI MetroAccess Transmission Services, Corp./Golden Field Services

Job Location Site: 1206 Guadalupe Street, STAFFORD, TX 77477

Bond No. **Date of Bond:** 5/1/2017 **Amount:** \$50,000.00

The above applicant came to make use of certain Fort Bend County property subject to, "The Order Regulating the Laying, Construction, Maintenance, and Repair of Buried Cables, Conduits, and Pole Lines, In, Under, Across or Along Roads, Streets, Highways, and Drainage Ditches in Fort Bend County, Texas, Under the Jurisdiction of the Commissioners Court of Fort Bend County, Texas," as passed by the Commissioners Court of Fort Bend County, Texas, of the Minutes of the Commissioners Court of Fort Bend County, Texas, to the extent that such order is not inconsistent with Chapter 181, Vernon's Texas Statutes and Codes Annotated.

Notes:

1. Evidence of review by the Commissioners Court must be kept on the job site and failure to do so constitutes grounds for job shutdown.
2. Written notices are required:
 - a. 48 hours in advance of construction start up, and
 - b. When construction is completed and ready for final inspection, submit notification to Permit Administrator thru MyGovernmentOnline.org portal.
3. This permit expires one (1) year from date of permit if construction has not commenced.

On this 4th day of September, 2018, Upon Motion of Commissioner Meyers, seconded by Commissioner Morales, duly put and carried, it is ORDERED, ADJUDGED AND DECREED that said notice of said above purpose is hereby acknowledged by the Commissioners Court of Fort Bend County, Texas, and that said notice be placed on record according to the regulation order thereof.

Signature

Presented to Commissioners Court and approved.

By: Sean Eglinton

Date Recorded 9-7-2018 Comm. Court No. 14D

County Engineer

N/A

Clerk of Commissioners Court

By: _____

By: Aranda Wittles
Deputy

Drainage District Engineer/Manager

MCI metro
ACCESS TRANSMISSION SERVICES CORPORATION

OUTSIDE PLANT CONSTRUCTION
FIBER OPTIC CABLE ROUTE

ECC FIBER BUILD: 1706ANAY.001
MISSOURI CITY TO BLACK LAKE
MISSOURI CITY, TX

SITE CODE: HODATX

PROJECT STATUS: CONSTRUCTION

DATE: 7/6/18

CONTACT SHEET



PROJECT: 1706ANAY_001
 MISSOURI CITY, TX
 MISSOURI CITY TO BLACK LAKE

MCI

PROJECT ENGINEER:
 PROJECT MANAGER:
 PROJECT COORDINATOR:

OUTSIDE PLANT CONSTRUCTION:

CONSTRUCTION CONTRACTOR: ERVIN CABLE CONSTRUCTION 1-844-322-2524
 CONSTRUCTION MANAGER: AURELIO MALLAMANCE (270) 349-0337
 PROJECT COORDINATOR: BARRY PHILLIPS (918) 688-4168

AGENT:
 MANAGER:

COORDINATOR:
 MANAGER:

PROGRAM MANAGER:
 LIGHTWAVE ENGINEER:
 CIVIL ENGINEER:
 TERMINAL CONST. REP.:
 SPLICING MANAGER:
 TSO MANAGER:

ENGINEERING CONTRACTOR

GOLDEN FIELD SERVICES: 10830 EAST 45TH ST. STE. 405 TULSA, OK 74146
 OFFICE: (918) 610-0014
 FAX: (918) 610-0016

PRESIDENT: JERRY JEFFRIES, SR.
 OFFICE: (918) 610-0014
 CELL: (918) 638-3317
 E-MAIL: JJEFFRIES@GOLDENFIELDSERVICES.COM

PROJECT MANAGER: LARRY STALCUP
 OFFICE: (918) 610-0014
 CELL: (918) 633-2198
 E-MAIL: LSTALCUP@GOLDENFIELDSERVICES.COM

NAME OF FIRM:
 PROJECT COORDINATOR:
 PROJECT SUPERINTENDENT:

RAILROADS

UNION PACIFIC RAILROAD DANIEL PETERS (402) 544-8620

UTILITIES

MCI UTILITY LOCATE 1-800-624-9675
 TEXAS ONE CALL SYSTEM (UTILITY LOCATES) 1-800-545-6005

NON MEMBERS:

CITY GOVERNMENT

CITY OF HOUSTON
 - SANITARY SEWER MIKE NOWROOZI (832) 394-9123
 SAM HABIBI (832) 394-9124
 - TRAFFIC NAEEM HUSAIN (832) 394-9128
 - ROAD & BRIDGE RICK KOVACICH (832) 394-9132
 - STORM QUALITY ZIA MOHAMMAJJI (832) 394-9134
 - WATER ROBERTO GOMEZ (832) 394-9160
 BILL CROUCH (832) 394-9161

COUNTY GOVERNMENT

FORT BEND COUNTY

STATE GOVERNMENT

N/A

FEDERAL GOVERNMENT

N/A

OTHER

N/A

MCI/metro
 ACCESS TRANSMISSION SERVICES
 CORPORATION
 OUTSIDE PLANT CONSTRUCTION
 TITLE: FIBER OPTIC ROUTE
 MISSOURI CITY TO BLACK LAKE
 MISSOURI CITY, TX

DATE: 7/6/18
 ENGINEER: L. STALCUP
 DRAWN BY: G.F.S. (TJS)

REVISIONS			
No.	DATE	DESCRIPTION	BY

EXCEPT AS MAY BE OTHERWISE PROVIDED BY CONTRACT, THESE DRAWINGS AND SPECIFICATIONS SHALL REMAIN THE PROPERTY OF MCI COMMUNICATIONS SERVICES INC. BOTH BEING ISSUED IN STRICT CONFIDENCE AND SHALL NOT BE REPRODUCED, COPIED, OR USED FOR ANY PURPOSE WITHOUT SPECIFIC WRITTEN PERMISSION.

SCALE
 HORIZONTAL: 1"= N/A
 VERTICAL: 1"= N/A
 MP _____ TO MP _____
 SHEET 03 OF 130
 FILE: ECC-FBRBLD01003AC.LIN

GENERAL NOTES / CLARIFICATION NOTES

GENERAL NOTES

1. VERIZON BUSINESS COMPRISES THE FOLLOWING OPERATING ENTITIES:

- MCI COMMUNICATIONS SERVICES, INC.
- MCI METRO COMMUNICATIONS SERVICES, INC.
- MCI METRO ACCESS TRANSMISSION SERVICES OF VIRGINIA, INC.
- MCI METRO ACCESS TRANSMISSION SERVICES OF MASSACHUSETTS, INC.
- METROPOLITAN FIBER SYSTEMS OF NEW YORK, INC.

2. ALL WORK TO BE PERFORMED IN STRICT ACCORDANCE WITH THE APPLICABLE CODES OR REQUIREMENTS OF ANY REGULATING GOVERNMENTAL AGENCY, VERIZON BUSINESS AND THE RIGHT-OF-WAY GRANTOR.

3. LOCATIONS OF SOME OF THE PHYSICAL FEATURES WERE OBTAINED FROM DATED RAILROAD EVALUATION MAPS OR OTHER DRAWINGS AND MAY NOT BE AS SHOWN OR DEPICTED ON THESE DRAWINGS.
4. UNDERGROUND UTILITIES HAVE BEEN PLOTTED FROM AVAILABLE RECORDS AND FIELD OBSERVATIONS BUT ARE NOT NECESSARILY EXACT. THEREFORE, UTILITY LOCATIONS WILL BE VERIFIED AT LEAST 100 FEET IN ADVANCE OF TRENCHING OR PLOWING, SO THAT CHANGES IN CABLE PLACEMENT CAN BE MADE IN THE EVENT OF CONFLICT.
5. ALL KNOWN BURIED OBSTRUCTIONS ARE SHOWN ON THE CONSTRUCTION DRAWINGS. ANY AND ALL OTHERS ENCOUNTERED ARE ALSO THE RESPONSIBILITY OF THE CONTRACTOR TO LOCATE, PROTECT AND REPAIR IF DAMAGED.
6. ANY AND ALL IMPROVEMENTS, SUCH AS ASPHALT OR CONCRETE PAVEMENT, CURBS, GUTTERS, WALKS, DRAINAGE DITCHES, EMBANKMENTS, SHRUBS, TREES, GRASS SOD, ETC., IF DAMAGED, SHALL BE RESTORED TO ORIGINAL CONDITION.
7. EQUIPMENT TYPES SPECIFIED HEREIN (IE: "BACKHOE", SWAMP PLOW ETC.) ARE SUGGESTIONS ONLY AND ARE NOT INTENDED AS REQUIREMENTS. CONTRACTOR WILL BE NOTIFIED AS TO EXPECTATIONS.
8. SHORING OF BORE PITS AND TRENCHES IN ACCORDANCE WITH OSHA REGULATIONS IS MANDATORY.
9. BURIED CABLE MARKERS WILL BE PLACED AT ALL UNDERGROUND UTILITY LOCATIONS AND ALL OTHER LOCATIONS IN ACCORDANCE WITH THE CONSTRUCTION DRAWINGS AND THE OUTSIDE PLANT HANDBOOK.
10. ALL 4" ID CONDUIT WILL BE SCHEDULE 40 (EG.: PVC OR GSP/BSP), OR AS SPECIFIED.
11. UNDERGROUND CONDUIT WILL BE PLACED AT 48" MINIMUM COVER UNLESS OTHERWISE SPECIFIED ON THE CONSTRUCTION DRAWINGS.

CLARIFICATION NOTES

1. STATION
2. LOCATION
3. CLARIFICATION NO. AND MINIMUM COVER
4. QUANTITY LINEAR FOOTAGE/SQUARE FOOTAGE, SIZE OF MANHOLE/HANDHOLE SIZE OF PULL/SPLICE BOX, DIMENSION OF WALL, HEIGHT/CLASS/TYPICAL OF POLE
5. TYPICAL DRAWING NO. AND TYPICAL DETAIL DRAWING NUMBER
6. PLANT ACCOUNTING CODE
7. SPECIFIED CONDUIT, HANDHOLE/MANHOLE NO., SPECIFIED PURPOSE AND MATERIAL, BRIDGE NO. AND RAILROAD STATION, MATERIAL, POLE NO.

1.
2.
3.
4.
5.
6.
7.

ADDENDUM NOTES

CLARIFICATION NOTES (CONTINUED)

100	110	JACK AND DRY BORE CONDUIT(S)
200	210	PLACE CONDUIT
	212	PLACE HIGH DENSITY POLYETHYLENE (HDPE)
	213	ROCK ADDER
	214	SLURRY BACKFILL ADDER
	215	EXPOSE CONDUIT
	216	EXPOSE CONDUIT AND RELOCATE
	217	EXPOSE CONDUIT AND REPLACE/SUBSTITUTE
	218	EXPOSE AND REMOVE CONDUIT
	219	EXPOSE AND REMOVE CONDUIT (ABANDONED)
	220	CONCRETE ENCASE
	221	REMOVE CONCRETE ENCASUREMENT
	222	REMOVE CONCRETE CAP
	240	PLACE HANDHOLE
	244	REMOVE EXISTING HANDHOLE
	245	RELOCATE HANHOLE
	246	REPLACE/SUBSTITUTE HANDHOLE
	247	EXCAVATE SPLICE PIT
	250	PLACE MANHOLE
	252	REMOVE EXISTING MANHOLE
	255	RELOCATE PRECAST MANHOLE
	256	REPLACE/SUBSTITUTE PRECAST MANHOLE
	180	CONSTRUCT WALL
	270	REMOVE AND RESTORE ASPHALT
	280	REMOVE AND RESTORE CONCRETE
	281	REMOVE AND RESTORE SIDEWALK
	282	REMOVE AND RESTORE CURBING
300	310	ATTACH CONDUIT TO WALL OR STRUCTURE
	315	DETACH CONDUIT FROM WALL OR STRUCTURE
	320	CORE BORE
	330	ATTACH PULL/SPLICE BOX TO WALL OR STRUCTURE
400	410	PULL CABLE
	411	PULL THROUGH DUCT (INNERDUCT)
	415	REMOVE CABLE FROM CONDUIT
	420	REPOSITION ACTIVE CABLE SLACK
500	510	DIRECT BURY CABLE
	515	EXPOSE DIRECT BURIED CABLE
	516	EXPOSE DIRECT BURIED CABLE AND RELOCATE
	517	REMOVE AND DISPOSE OF CABLE
	520	PLACE AERIAL CABLE
	525	RELOCATE AERIAL CABLE
	518	DELASH AERIAL CABLE
	527	RELASH AERIAL CABLE
	528	REMOVE AERIAL CABLE
	530	PLACE POLE/PUSH BRACE
	535	REMOVE POLE/PUSH BRACE
600	610	JETTING CONDUIT
	620	EMBEDMENT PLOW
	630	DIRECTIONAL BORE
700	710	PLACE BURIED CABLE MARKERS AND SIGNS/MWCOM
		WATER CROSSING SIGNS
	711	PLACE ISOLATOR/PROTECTION SYSTEM AT EXISTING
	713	HANDHOLES/MANHOLES
	712	REMOVE BURIED CABLE MARKER POST/HARDWARE
	714	REMOVE CONCRETE BURIED CABLE MARKER POST



PROJECT: 1706ANAY.001
MISSOURI CITY, TX
MISSOURI CITY TO BLACK LAKE

MCI metro ACCESS TRANSMISSION SERVICES CORPORATION	OUTSIDE PLANT CONSTRUCTION TITLE: FIBER OPTIC ROUTE MISSOURI CITY TO BLACK LAKE MISSOURI CITY, TX
--	--

DATE: 7/6/18
ENGINEER: L. STALCUP

DRAWN BY: G.F.S. (TJS)

REVISIONS			
No.	DATE	DESCRIPTION	BY

EXCEPT AS MAY BE OTHERWISE PROVIDED BY CONTRACT, THESE DRAWINGS AND SPECIFICATIONS SHALL REMAIN THE PROPERTY OF MCI COMMUNICATIONS SERVICES INC. BOTH BEING ISSUED IN STRICT CONFIDENCE AND SHALL NOT BE REPRODUCED, COPIED, OR USED FOR ANY PURPOSE WITHOUT SPECIFIC WRITTEN PERMISSION.

SCALE

HORIZONTAL: 1"= N/A
VERTICAL: 1"= N/A

MP TO MP

SHEET 04 OF 130

FILE: ECC-FBRBLD01004.AC.LIN

SYMBOLS KEY

	EXISTING	PROPOSED
DIRECT BURIED CABLE	---	---
AERIAL CABLE	— A —	— A —
SUBMARINE CABLE	— SUBM —	— SUBM —
FOGMRE CABLE	— FOGW —	— FOGW —
DIRECT BURIED HDPE	— H —	— H —
PVC OR SPLIT PVC CONDUIT	====	====
BSP/GSP OR SPLIT BSP/GSP CONDUIT	====	====
STEEL CASING	====	====
REMOVE AND RESTORE ASPHALT OR CONCRETE (WIDTH AS INDICATED)	==== 48" ↑	==== 48" ↑
CORE BORE	—	—
JACK AND BORE	—	—
DIRECTIONAL BORE (& PLACE CONDUIT)	— DB —	— DB —
FUTURE CABLE	—	—
REMOVE CABLE	— X —	— X —
TO BE REMOVED OR ABANDONED (SHOWN FOR HDPE)	— X H —	— H X —
AERIAL UTILITY (ELECTRIC)	— E —	— E —
UNDERGROUND UTILITY (TELEPHONE)	— T —	— T —
MAIN TRACKS	—	—
AUXILLARY TRACKS	—	—
CENTERLINE	— C/L —	— C/L —
RIGHT-OF-WAY	— R/W —	— R/W —
EDGE OF ROADWAY (GENERIC)	—	—
EDGE OF PAVEMENT	— EOP —	— EOP —
BACK OF CURB	— BOC —	— BOC —
DITCH LINE	—	—
TAX, CITY, COUNTY, OR STATE BOUNDARY LINE	—	—
PROPERTY LINE	—	—
FENCE LINE	F/L — O — F/L F/L — O —	F/L — O — F/L F/L — O —
GUARDRAIL	—	—
TOP OF SLOPE	—	—
TOE OF SLOPE	—	—

STEEL MARKER AND SIGN-(A)
ALUMINUM "HUB"-STYLE MARKER-(B)
FLAT MARKER-(C)
TUBULAR MARKER-(D)
TUBULAR MARKER, & ISOLATOR PROTECTOR-(E)

MILE POST MARKER
NOTE:
DASHED = NOT FOUND IN FIELD

PERMIT TRACKING FORM IDENTIFIER

ROCK PROBE (DEPTH AS INDICATED)

UTILITY COVER DEPTH

HANDHOLE, MANHOLE OR PULLBOX

POLE

ANCHOR ONLY

GUY ONLY

OVERHEAD GUY (ARROW IN DIRECTION OF PULL)

ANCHOR AND GUY

SIDEWALK ANCHOR AND GUY

FOREIGN ANCHOR AND GUY

PUSH BRACE (EXISTING POLE)

ACCOUNT CODE CHANGE (BURIED TO AERIAL)

RISER ATTACHMENT LOCATION

BOND AND GROUND

CULVERT (SIZE AS INDICATED)

BRIDGE

WATER METER

GAS VALVE

FIRE HYDRANT

RAILROAD SIGNAL CONTROL BOX

CAUTION NOTE

EXISTING	PROPOSED
STA. MKR. # (A) ↓	STA. MKR. # (A) ↓
STA. MKR. # (B) ↓	STA. MKR. # (B) ↓
STA. MKR. # (C) ↓	STA. MKR. # (C) ↓
STA. MKR. # (D) ↓	STA. MKR. # (D) ↓
STA. MKR. # (E) ↓	STA. MKR. # (E) ↓
P.T.F. 187	P.T.F. 187
42"	42"
48"	48"
OHG 92' 10M	OHG 92' 10M
30'-5-84	30'-5-84
B&G	B&G
12"	12"
ACTIVE MCI CAUTION BURIED FIBER OPTIC CABLE	ACTIVE MCI CAUTION AERIAL FIBER OPTIC CABLE

verizonbusiness

PROJECT: 1706ANAY.001
MISSOURI CITY, TX
MISSOURI CITY TO BLACK LAKE

MCI metro
ACCESS TRANSMISSION SERVICES CORPORATION
OUTSIDE PLANT CONSTRUCTION
TITLE: FIBER OPTIC ROUTE
MISSOURI CITY TO BLACK LAKE
MISSOURI CITY, TX

DATE: 7/6/18
ENGINEER: L. STALCUP
DRAWN BY: G.F.S. (TJS)

REVISIONS			
No.	DATE	DESCRIPTION	BY

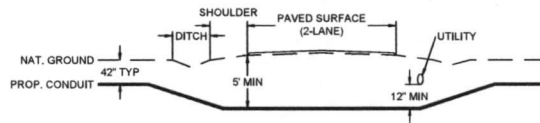
EXCEPT AS MAY BE OTHERWISE PROVIDED BY CONTRACT, THESE DRAWINGS AND SPECIFICATIONS SHALL REMAIN THE PROPERTY OF MCI COMMUNICATIONS SERVICES INC. BOTH BEFORE ISSUED IN STRICT CONFIDENCE AND SHALL NOT BE REPRODUCED, COPIED, OR USED FOR ANY PURPOSE WITHOUT SPECIFIC WRITTEN PERMISSION.

SCALE
HORIZONTAL: 1" = N/A
VERTICAL: 1" = N/A
MP TO MP
SHEET 05 OF 130
FILE: ECC-FRBLD01005AC.LIN

TYPICAL CROSSING PROFILE DETAILS: UNDERGROUND

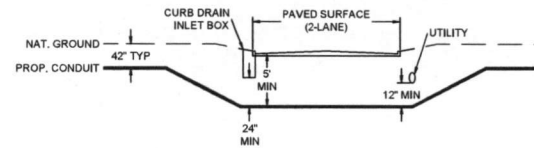
TYPICAL DETAIL "A"

TWO LANE - ASPHALT ROAD - NO CURB



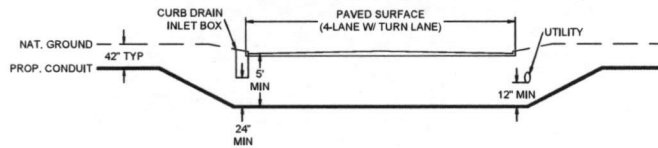
TYPICAL DETAIL "B"

TWO LANE - CURBED ROAD



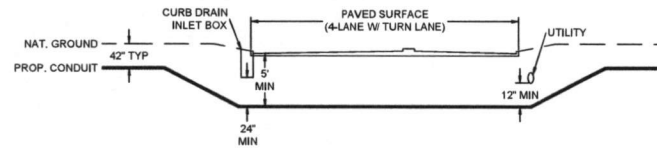
TYPICAL DETAIL "C"

FOUR LANE (W/ TURN LANE) - CURBED ROAD - NO MEDIAN



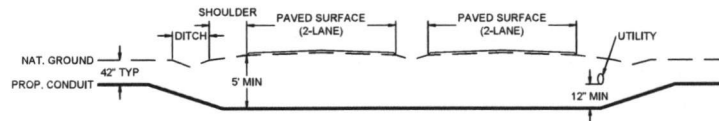
TYPICAL DETAIL "D"

FOUR LANE (W/ TURN LANE) - CURBED ROAD - WITH MEDIAN



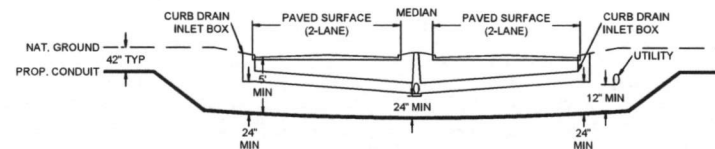
TYPICAL DETAIL "E"

4 LANE - SPLIT ASPHALT ROAD - NO CURB



TYPICAL DETAIL "F"

4 LANE - SPLIT CURBED ROAD



PROJECT: 1706ANAY.001

MISSOURI CITY, TX
MISSOURI CITY TO BLACK LAKE

McImire
ACCESS TRANSMISSION SERVICES
CORPORATION
OUTSIDE PLANT CONSTRUCTION
TITLE: FIBER OPTIC ROUTE
MISSOURI CITY TO BLACK LAKE
MISSOURI CITY, TX

DATE: 7/6/18
ENGINEER: L. STALCUP

DRAWN BY: G.F.S. (TJS)

REVISIONS

No.	DATE	DESCRIPTION	BY

EXCEPT AS MAY BE OTHERWISE PROVIDED BY CONTRACT, THESE DRAWINGS AND SPECIFICATIONS SHALL REMAIN THE PROPERTY OF MCI COMMUNICATIONS SERVICES INC. BOTH BEING ISSUED IN STRICT CONFIDENCE AND SHALL NOT BE REPRODUCED, COPIED, OR USED FOR ANY PURPOSE WITHOUT SPECIFIC WRITTEN PERMISSION.

SCALE

HORIZONTAL: 1"= N/A

VERTICAL: 1"= N/A

MP TO MP

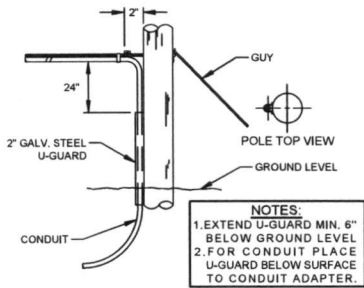
SHEET 6A OF 130

FILE: ECC-FBRBD01006BC.LIN

GENERAL AERIAL CONSTRUCTION DETAILS

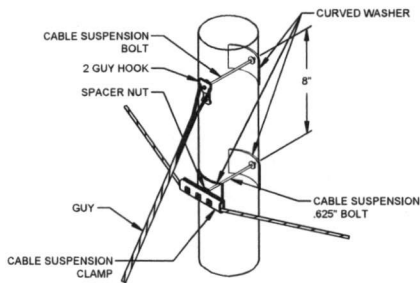
TYPICAL DETAIL "A"

POLE ARRANGEMENT FOR AERIAL TO BURIED



TYPICAL DETAIL "D"

SUSPENSION STRAND - PULL TOWARD POLE - LESS THAN 5 FEET



TYPICAL DETAIL "G"

JOINING 045 LASHING WIRE



FORMING WIRE OVER STUD OF CLAMP

REMOVE ANY SLACK IN THE LASHING WIRE BY MAINTAINING A PULL ON THE WIRE AND TAPPING THE STRAND SHARPLY. THEN FORM THE WIRE OVER THE STUD AND TIGHTEN THE NUT. CUT THE FREE END OF THE LASHING WIRE OFF 0.75" BEYOND THE END OF THE CLAMP.

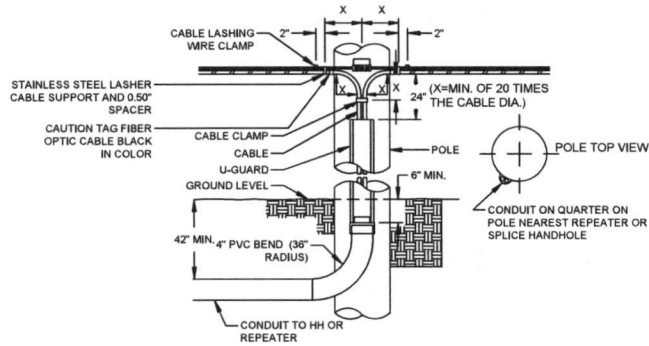


FORMING LASHING WIRE AROUND STRAND

FORM THE LASHING WIRE AROUND THE STRAND AND PLACE IT BELOW THE STUD AND BETWEEN THE SECOND WASHER AND STUD SHOULDER.

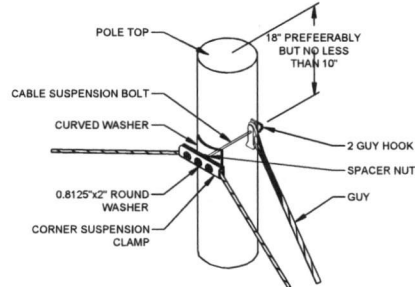
TYPICAL DETAIL "B"

POLE ARRANGEMENT FOR REPEATER OR HANDHOLE LOCATION



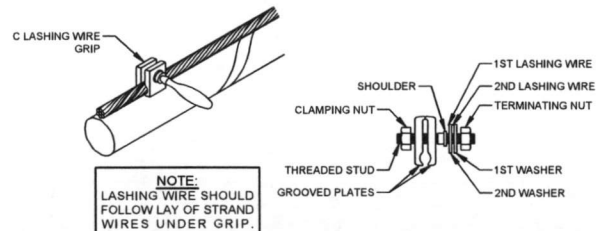
TYPICAL DETAIL "E"

SUSPENSION STRAND - PULL AWAY FROM POLE - 5 FEET OR MORE



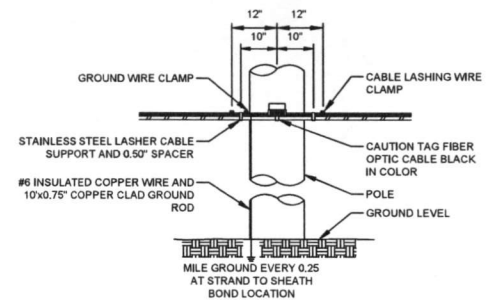
TYPICAL DETAIL "H"

LASHING WIRE GRIP AND CLAMP



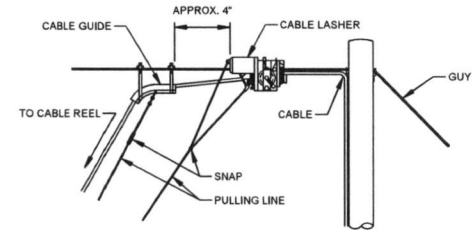
TYPICAL DETAIL "C"

TYPICAL CABLE & HARDWARE INSTALLATION



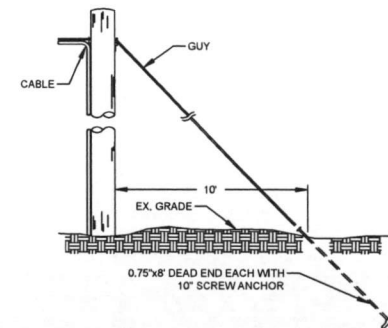
TYPICAL DETAIL "F"

TYPICAL ARRANGEMENT OF CABLE LASHER AND CABLE GUIDE



TYPICAL DETAIL "I"

ANCHOR & DOWN GUY



PROJECT: 1706ANAY.001
MISSOURI CITY, TX
MISSOURI CITY TO BLACK LAKE

MClmetro
ACCESS TRANSMISSION SERVICES CORPORATION
OUTSIDE PLANT CONSTRUCTION
TITLE: FIBER OPTIC ROUTE
MISSOURI CITY TO BLACK LAKE
MISSOURI CITY, TX

DATE: 7/6/18
ENGINEER: L. STALCUP
DRAWN BY: G.F.S. (TJS)

REVISIONS			
No.	DATE	DESCRIPTION	BY

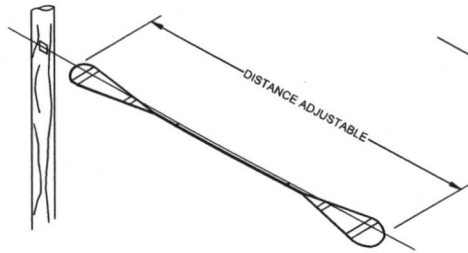
EXCEPT AS MAY BE OTHERWISE PROVIDED BY CONTRACT, THESE DRAWINGS AND SPECIFICATIONS SHALL REMAIN THE PROPERTY OF MCI COMMUNICATIONS SERVICES INC. BOTH BEING ISSUED IN STRICT CONFIDENCE AND SHALL NOT BE REPRODUCED, COPIED, OR USED FOR ANY PURPOSE WITHOUT SPECIFIC WRITTEN PERMISSION.

SCALE
HORIZONTAL: 1"= N/A
VERTICAL: 1"= N/A
MP TO MP
SHEET 6B OF 130
FILE: ECC-FBRBLD01006BC.LIN

AERIAL IN-LINE SLACK STORAGE DETAILS

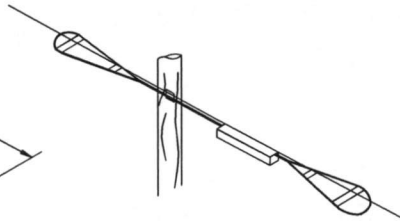
TYPICAL DETAIL "A"

RESERVE CABLE LENGTH
STRAND STORAGE APPLICATION



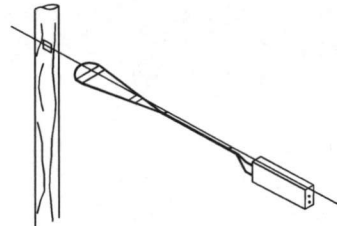
TYPICAL DETAIL "B"

IN-LINE SPLICE APPLICATION



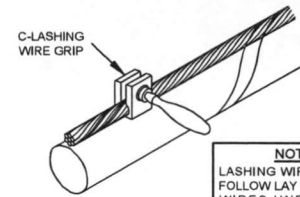
TYPICAL DETAIL "C"

BUTT SPLICE APPLICATION



TYPICAL DETAIL "D"

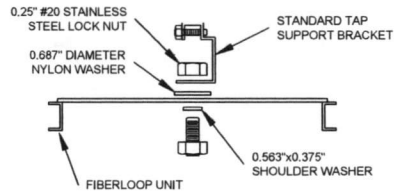
LASHING WIRE GRIP AND CLAMP C-LASHING
WIRE GRIP INSTALLED ON STRAND



NOTE:
LASHING WIRE SHOULD
FOLLOW LAY OF STRAND
WIRES UNDER GRIP.

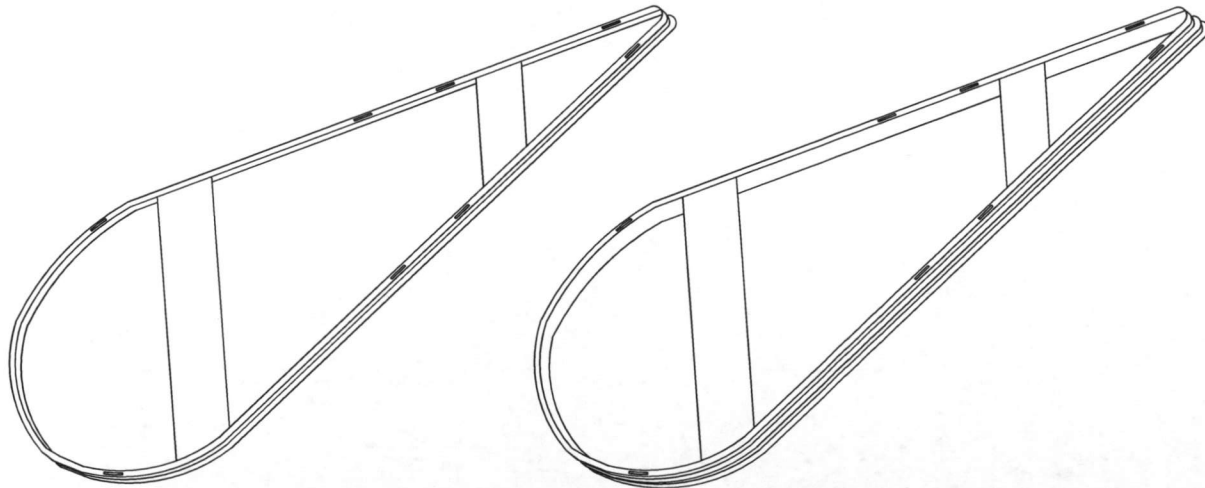
TYPICAL DETAIL "E"

HARDWARE KIT



TYPICAL DETAIL "F"

SINGLE & DOUBLE FIBER LOOPS



PROJECT: 1706ANAY.001

MISSOURI CITY, TX

MISSOURI CITY TO BLACK LAKE

MCMetro
ACCESS TRANSMISSION SERVICES
CORPORATION

OUTSIDE PLANT CONSTRUCTION

TITLE: FIBER OPTIC ROUTE
MISSOURI CITY TO BLACK LAKE
MISSOURI CITY, TX

DATE: 7/6/18

ENGINEER: L. STALCUP

DRAWN BY: G.F.S. (TJS)

REVISIONS

No.	DATE	DESCRIPTION	BY

EXCEPT AS MAY BE OTHERWISE PROVIDED BY CONTRACT, THESE DRAWINGS AND SPECIFICATIONS SHALL REMAIN THE PROPERTY OF MCM COMMUNICATIONS SERVICES INC. BOTH BEFORE AND AFTER ISSUANCE. THESE DRAWINGS AND SPECIFICATIONS ARE ISSUED IN STRICT CONFIDENCE AND SHALL NOT BE REPRODUCED, COPIED, OR USED FOR ANY PURPOSE WITHOUT SPECIFIC WRITTEN PERMISSION.

SCALE

HORIZONTAL: 1"= N/A

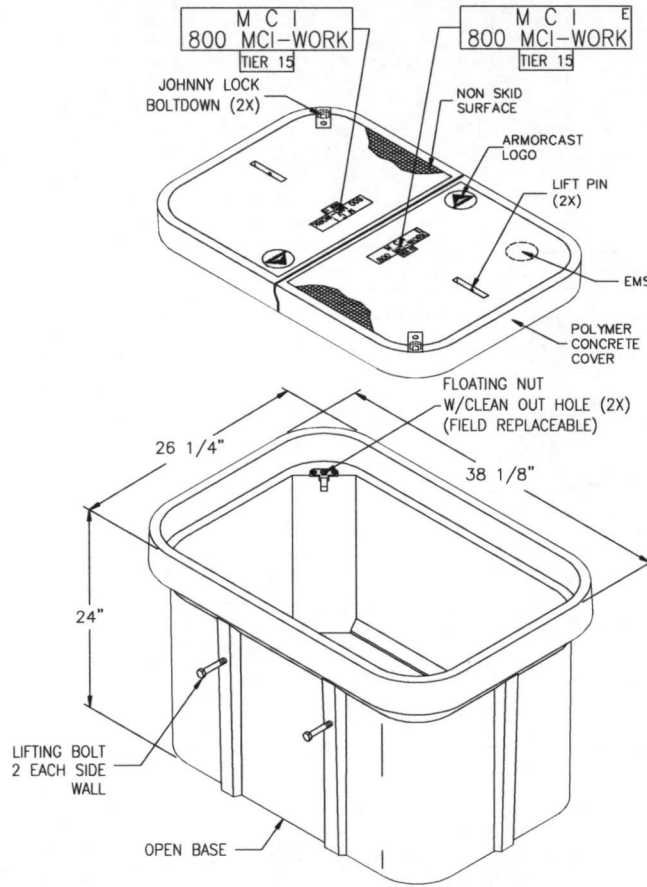
VERTICAL: 1"= N/A

MP TO MP

SHEET 6C OF 130

FILE: ECC-FBRBLD01006CC.LIN

24" x 36" x 24" POLYMER CONCRETE BOX ASSEMBLY



NOTE:
BOX AND COVER ASSEMBLY MEET
ANSI/SCTE 77 TIER 15 LOADING

	13230 Soltey Street, North Hollywood, CA 91605 (818) 982-3600	PART DESCRIPTION 24" X 36" X 24" POLYMER CONCRETE BOX ASSEMBLY		
	ARMORCAST PRODUCTS COMPANY	CUSTOMER VERIZON		
	<small>THE INFORMATION IN THIS DRAWING IS CONFIDENTIAL. THE DRAWING IS NOT TO BE REPRODUCED OR ITS CONTENTS DISCLOSED IN ANY MANNER EXCEPT WITH THE PRIOR WRITTEN APPROVAL OF ARMORCAST PRODUCTS COMPANY. IT IS THE PROPERTY OF AND MUST BE RETURNED TO ARMORCAST PRODUCTS COMPANY, 13230 SOLTEY STREET, NORTH HOLLYWOOD, CALIFORNIA 91605.</small>	DRAWN OA	DATE 10/17	SCALE NONE
		APPROV. WS	DATE 10/17	MATERIAL POLYMER CONCRETE
			MAX. LOAD TIER 15	DRAWING NUMBER A6001974TAPMC14



PROJECT: 1706ANAY.001
 MISSOURI CITY, TX
 MISSOURI CITY TO BLACK LAKE

MCImetro
 ACCESS TRANSMISSION SERVICES
 CORPORATION
 OUTSIDE PLANT CONSTRUCTION
 TITLE: FIBER OPTIC ROUTE
 MISSOURI CITY TO BLACK LAKE
 MISSOURI CITY, TX

DATE: 7/8/18
 ENGINEER: L. STALCUP
 DRAWN BY: G.F.S. (TJS)

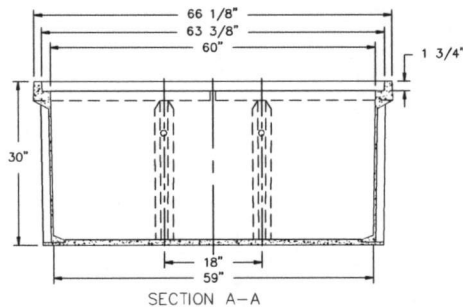
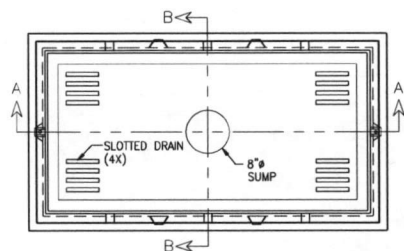
REVISIONS			
No.	DATE	DESCRIPTION	BY

EXCEPT AS MAY BE OTHERWISE PROVIDED BY CONTRACT THESE DRAWINGS AND SPECIFICATIONS SHALL REMAIN THE PROPERTY OF MCI COMMUNICATIONS SERVICES INC. BOTH BEING ISSUED IN STRICT CONFIDENCE AND SHALL NOT BE REPRODUCED, COPIED, OR USED FOR ANY PURPOSE WITHOUT SPECIFIC WRITTEN PERMISSION.

SCALE
 HORIZONTAL: 1"= N/A
 VERTICAL: 1"= N/A
 MP TO MP
 SHEET 07 OF 130
 FILE: ECC-FRBLD01007AC.LIN

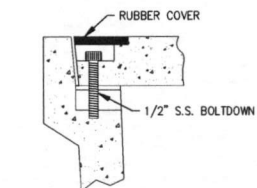
30" x 60" x 30" 30K STANDARD HANDHOLE DETAILS

DETAIL "A"
LOCKING DEVICE
CROSS SECTION

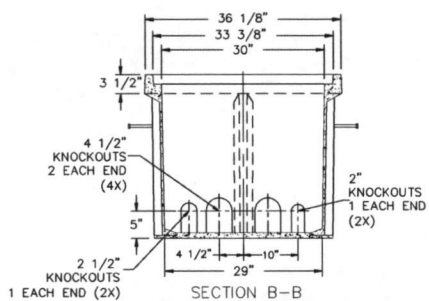


30K
M C I E
800 MCI-WORK
DETAIL A

DETAIL "B"
FLUSH MOUNT
COVER DETAIL



FLUSH MOUNT COVER DETAIL

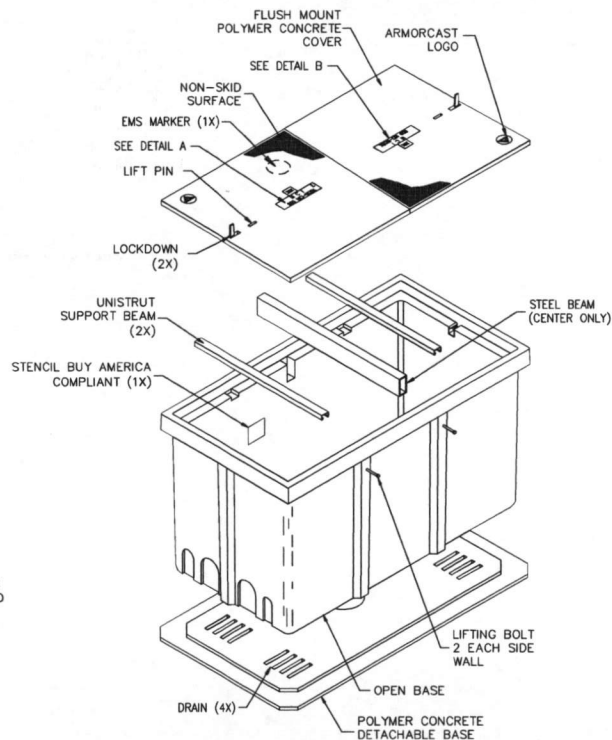


30K
M C I E
800 MCI-WORK
DETAIL B

SEALED PLASTIC BAG PLACED INSIDE VAULT TO CONTAIN

ITEM	QTY	DESCRIPTION
1	(1)	JOHNNY LOCK KEY
2	(2)	S.S. JOHNNY BOLTS W/FLAT WASHER.
3		SHRINK WRAP COVERS TO FRAME FOR PACKAGING.

DETAIL "C"
EXPLODED ISOMETRIC DETAIL



30K STANDARD HANDHOLE
30"x60"x30" POLYMER CONCRETE FLUSH MOUNT ASSEMBLY
MEETS SCTE/ANSI 77-TIER 22 LOADING CRITERIA
ADDITIONAL REQUIREMENTS:
DESIGNED LOAD: 30,000 LBS
MINIMUM FAILURE LOAD: 45,000 LBS



PROJECT: 1706ANAY.001
MISSOURI CITY, TX
MISSOURI CITY TO BLACK LAKE

MCI metro
ACCESS TRANSMISSION SERVICES
CORPORATION
OUTSIDE PLANT CONSTRUCTION
TITLE: FIBER OPTIC ROUTE
MISSOURI CITY TO BLACK LAKE
MISSOURI CITY, TX

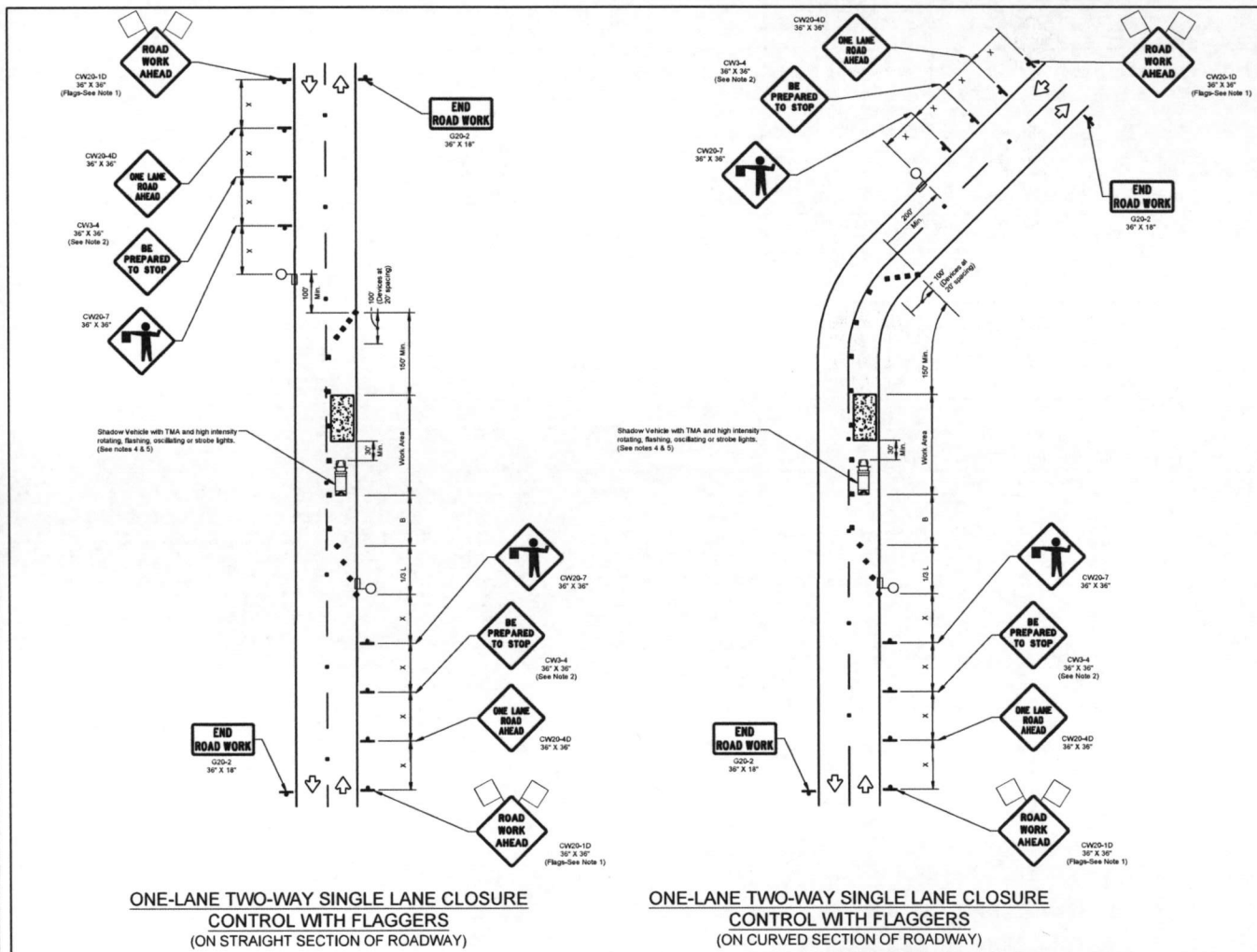
DATE: 7/6/18
ENGINEER: L. STALCUP
DRAWN BY: G.F.S. (TJS)

REVISIONS			
No.	DATE	DESCRIPTION	BY

EXCEPT AS MAY BE OTHERWISE PROVIDED BY CONTRACT, THESE DRAWINGS AND SPECIFICATIONS SHALL REMAIN THE PROPERTY OF MCI COMMUNICATIONS SERVICES INC. BOTH BEING ISSUED IN STRICT CONFIDENCE AND SHALL NOT BE REPRODUCED, COPIED, OR USED FOR ANY PURPOSE WITHOUT SPECIFIC WRITTEN PERMISSION.

SCALE
HORIZONTAL: 1"= N/A
VERTICAL: 1"= N/A
MP TO MP
SHEET 07A OF 130
FILE: ECC-FBRBLD01007AC.LIN

TRAFFIC CONTROL PLAN DETAILS



TRAFFIC CONTROL PLAN SECTION SHALL BE COMPLETED BY ENGINEER

ROADWAY	POSTED SPEED	TAPER LENGTH	SPACING CHANNELIZING DEVICES TAPER	SPACING CHANNELIZING DEVICES TANGENT	SIGN SPACING	BUFFER SPACE
ELLISB RD.	30 MPH	180'	30'	60'	120'	90'
KNIGHT RD.	30 MPH	180'	30'	60'	120'	90'
MOORE RD.	30 MPH	180'	30'	60'	120'	90'
5TH ST.	35 MPH	240'	30'	70'	180'	120'
COURT RD.	35 MPH	240'	30'	70'	180'	120'
FT.BEND PRWY (TOLL RD.)	40 MPH	320'	40'	80'	240'	150'
MCCKEER RD.	40 MPH	320'	40'	80'	240'	150'
WATT PLANTATION RD.	40 MPH	320'	40'	80'	240'	150'

LEGEND

	Type 3 Barricade		Channelizing Devices
	Trailer Mounted Flashing Arrow Board		Truck Mounted Attenuator (TMA)
	Sign		Portable Changeable Message Sign (PCMS)
	Flag		Traffic Flow
	Flagger		Flagger

Posted Speed	Formula	Minimum Desirable Taper Lengths "L"	Suggested Maximum Spacing of Channelizing Devices	Minimum Sign Spacing "S"	Suggested Longitudinal Buffer Space "B"
30		10' Offset	On a Taper	100'	90'
35	$L = 2.5S$	15'	On a Tangent	120'	120'
40		20'		160'	150'
45		25'		240'	180'
50		30'		320'	240'
55		35'		400'	290'
60		40'		500'	350'
65		45'		600'	410'
70		50'		700'	475'
75		55'		800'	540'

* Conventional Roads Only
 ** Taper lengths have been rounded off.
 L=Length of Taper(FT) W=Width of Offset(FT) S=Posted Speed(MPH)

- ### GENERAL NOTES
- Flags attached to signs where shown are OPTIONAL.
 - All traffic control devices illustrated are REQUIRED, except those denoted with the triangle symbol are OPTIONAL.
 - Inactive work vehicles or other equipment should be parked near the right-of-way line and not parked on the paved shoulder.
 - A Shadow Vehicle with a TMA should be used anytime it can be positioned 30 to 100 feet in advance of the area of crew exposure without adversely affecting the performance or quality of the work. If workers are no longer present but road or work conditions require the traffic control to remain in place, Type 3 Barricades or other channelizing devices may be substituted for the Shadow Vehicle and TMA.
 - Additional Shadow Vehicles with TMAs may be positioned off the paved surface, next to those shown in order to protect wider work spaces.
 - Contractor shall provide and install traffic control devices in conformance with part VI of Texas Manual on Uniform Traffic Control Devices (TMUTCD - Latest edition with revisions) during construction.
 - No lanes shall be blocked from 7am to 5am and 4pm to 6:30pm Monday thru Friday.
 - Off duty police officers/flaggers are required to direct traffic when applicable.
 - If project is within 400 feet from a signalized intersection, the Contractor shall contact Harris County Engineering Department, Traffic Signal Maintenance at (713) 881-3210 five (5) days prior to the start of construction.



PROJECT: 1706ANAY.001
 MISSOURI CITY, TX
 MISSOURI CITY TO BLACK LAKE

MCMicro ACCESS TRANSMISSION SERVICES CORPORATION
 OUTSIDE PLANT CONSTRUCTION
 TITLE: FIBER OPTIC ROUTE MISSOURI CITY TO BLACK LAKE MISSOURI CITY, TX

DATE: 7/6/18
 ENGINEER: L. STALCUP
 DRAWN BY: G.F.S. (TJS)

REVISIONS

No.	DATE	DESCRIPTION	BY

EXCEPT AS MAY BE OTHERWISE PROVIDED BY CONTRACT, THESE DRAWINGS AND SPECIFICATIONS SHALL REMAIN THE PROPERTY OF MCM COMMUNICATIONS SERVICES INC. BOTH BEING ISSUED IN STRICT CONFIDENCE AND SHALL NOT BE REPRODUCED, COPIED, OR USED FOR ANY PURPOSE WITHOUT SPECIFIC WRITTEN PERMISSION.

SCALE

HORIZONTAL: 1" = N/A
 VERTICAL: 1" = N/A

MP TO MP
 SHEET 8A OF 130
 FILE: ECC-FBRBD01008BC.LIN

NO.	REVISIONS	DATE	NAME
▲	UPDATED DEPARTMENT NAME & GENERAL NOTES	4/18/15	BSH
▲			
▲			
▲			

HARRIS COUNTY
 ENGINEERING DEPARTMENT

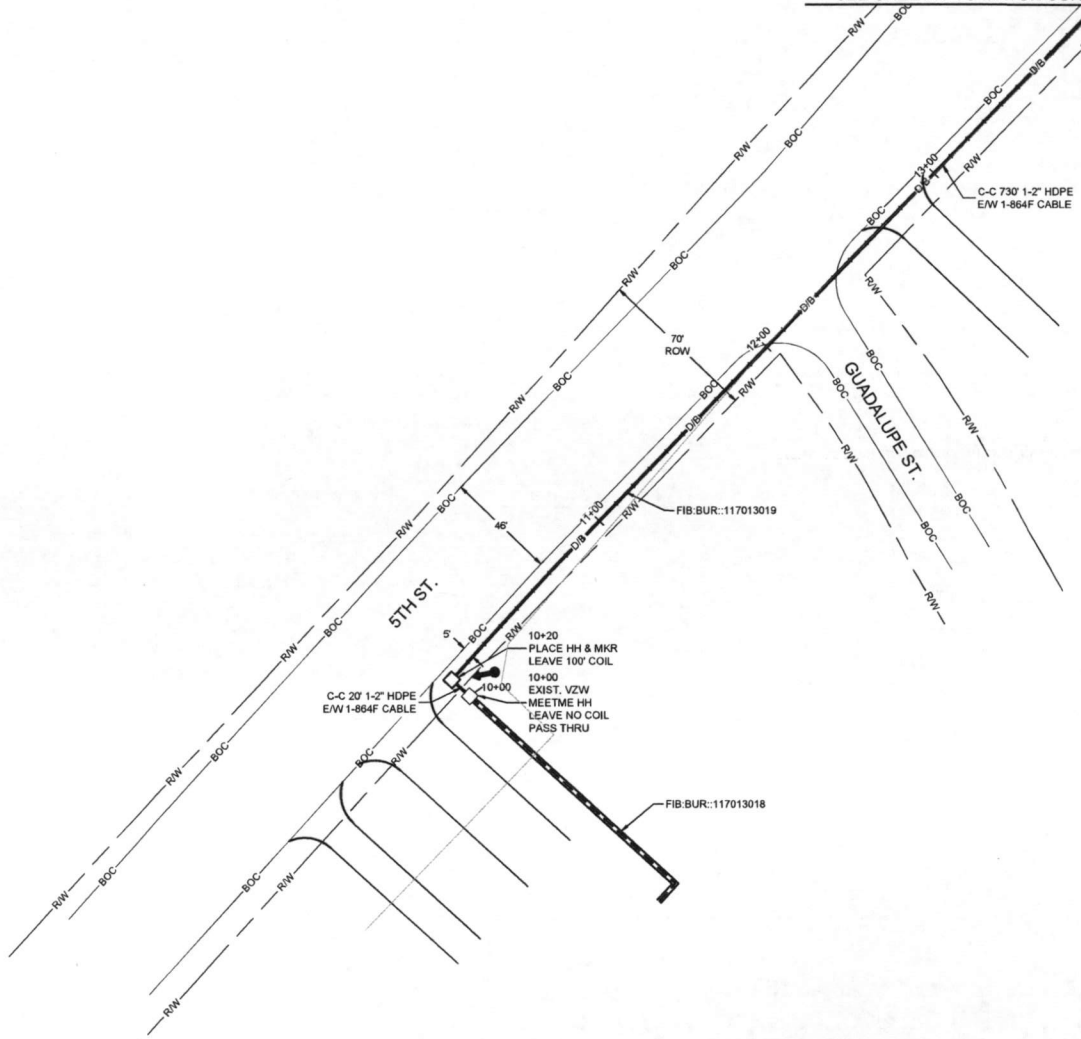


TEO, LLC
 5510 Community Drive
 Houston, Texas 77005
 281-558-1233 OFFICE
 713-668-6334 FAX
 teo@teo.com
 PUM # F-6978

PROJECT TITLE: 7906ANAY.001 MISSOURI CITY TO BLACK LAKE	HCD STANDARD
DRAWN BY: G.F.S.	39
CHECKED BY: G.F.S.	SHEET DESCRIPTION: TRAFFIC CONTROL PLAN (RIGHT LANE CLOSURE)
SCALE: N.T.S.	SHEET NO: 8A / 130
DATE: 07/06/18	APPROVED BY:

MISSOURI CITY, TX
FORT BEND COUNTY

SEE SHEET 10 TO MATCH SURVEY STA. 14+00



PROJECT: 1706ANAY.001

MISSOURI CITY, TX
MISSOURI CITY TO BLACK LAKE

CLARIFICATION NO.	QUANTITY
PLACE HANDHOLE	1
PROP. 1-2" HDPE	350'
PULL 1-864F CABLE	500'
PLACE MARKER	1

MCImetro
ACCESS TRANSMISSION SERVICES
CORPORATION

OUTSIDE PLANT CONSTRUCTION

TITLE: FIBER OPTIC ROUTE
MISSOURI CITY TO BLACK LAKE
MISSOURI CITY, TX

DATE: 7/6/18
ENGINEER: L. STALCUP
DRAWN BY: G.F.S. (TJS)

REVISIONS

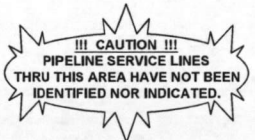
No.	DATE	DESCRIPTION	BY

EXCEPT AS MAY BE OTHERWISE PROVIDED BY CONTRACT, THESE DRAWINGS AND SPECIFICATIONS SHALL REMAIN THE PROPERTY OF MCI COMMUNICATIONS SERVICES INC. NOT BE REPRODUCED, COPIED, OR USED FOR ANY PURPOSE WITHOUT SPECIFIC WRITTEN PERMISSION.

SCALE
HORIZONTAL: 1"= 50'
VERTICAL: 1"= N/A
MP TO MP
SHEET 09 OF 130
FILE: ECC-FRBLD01009.AC.LIN

UNDERGROUND UTILITIES HAVE BEEN PLOTTED FROM AVAILABLE RECORDS AND FIELD OBSERVATIONS BUT ARE NOT NECESSARILY EXACT. IT IS THE CONTRACTORS RESPONSIBILITY TO FIELD LOCATE ALL UNDERGROUND OBSTRUCTIONS AND UTILITIES PRIOR TO CONSTRUCTION. COMPLETE REPAIR OF ANY AND ALL DAMAGES INCURRED SHALL BE AT THE EXPENSE OF THE CONTRACTOR.

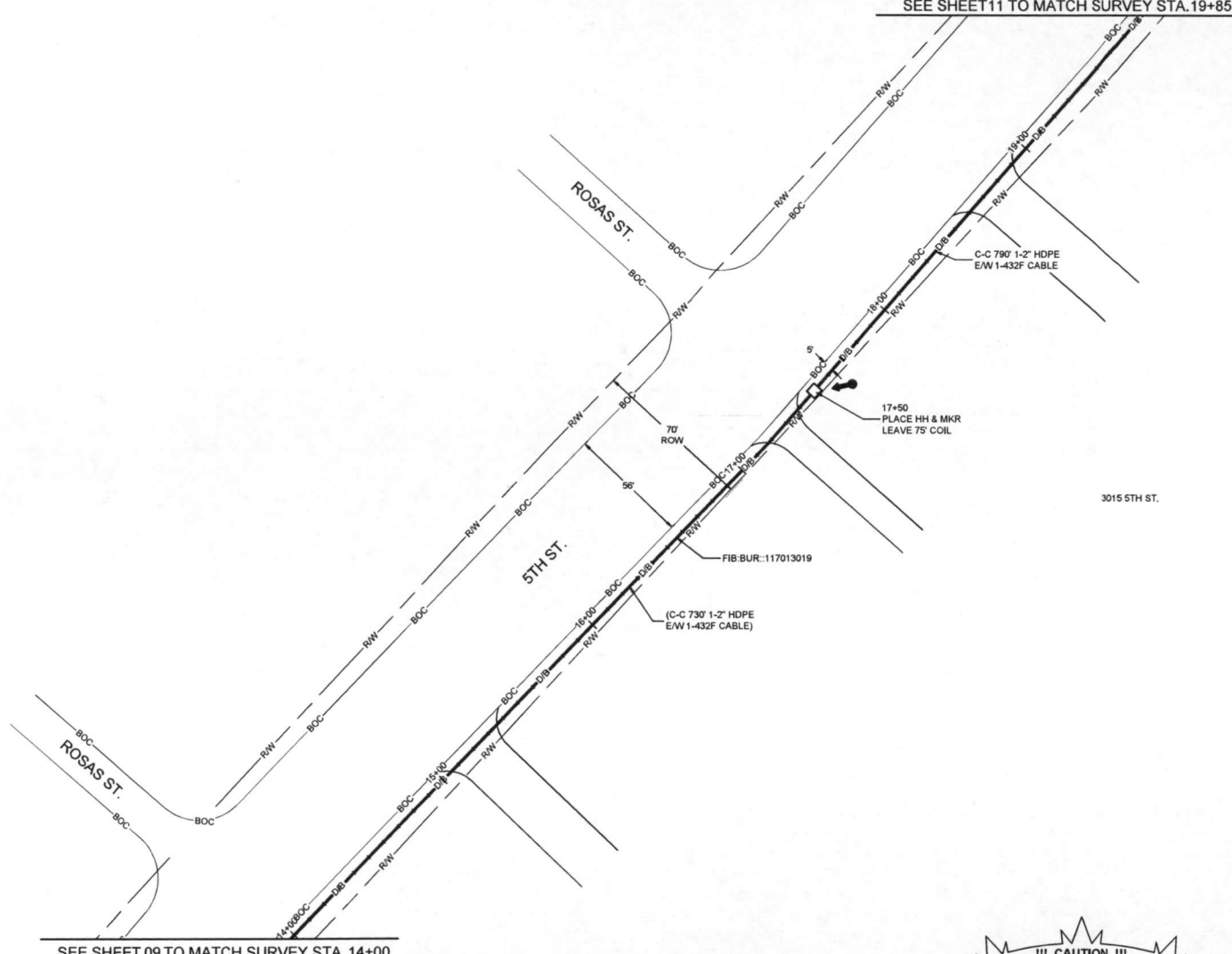
RIGHT OF WAY LINES WERE ESTABLISHED BY RESEARCH OF PUBLIC INFORMATION. NO BOUNDARY SURVEY OR PROPERTY LINE SURVEY WAS ESTABLISHED BY GOLDEN FIELD SERVICES, INC.. RIGHT OF WAY BOUNDARY MUST BE FIELD VERIFIED BY A REGISTERED PROFESSIONAL LAND SURVEYOR TO ACCURATELY VERIFY RIGHT OF WAY AND PROPERTY LINES PRIOR TO CONSTRUCTION.



MISSOURI CITY, TX
FORT BEND COUNTY



SEE SHEET 11 TO MATCH SURVEY STA. 19+85



SEE SHEET 09 TO MATCH SURVEY STA. 14+00

UNDERGROUND UTILITIES HAVE BEEN PLOTTED FROM AVAILABLE RECORDS AND FIELD OBSERVATIONS BUT ARE NOT NECESSARILY EXACT. IT IS THE CONTRACTORS RESPONSIBILITY TO FIELD LOCATE ALL UNDERGROUND OBSTRUCTIONS AND UTILITIES PRIOR TO CONSTRUCTION. COMPLETE REPAIR OF ANY AND ALL DAMAGES INCURRED SHALL BE AT THE EXPENSE OF THE CONTRACTOR.

RIGHT OF WAY LINES WERE ESTABLISHED BY RESEARCH OF PUBLIC INFORMATION. NO BOUNDARY SURVEY OR PROPERTY LINE SURVEY WAS ESTABLISHED BY GOLDEN FIELD SERVICES, INC. RIGHT OF WAY BOUNDARY MUST BE FIELD VERIFIED BY A REGISTERED PROFESSIONAL LAND SURVEYOR TO ACCURATELY VERIFY RIGHT OF WAY AND PROPERTY LINES PRIOR TO CONSTRUCTION.

!!! CAUTION !!!
PIPELINE SERVICE LINES
THRU THIS AREA HAVE NOT BEEN
IDENTIFIED NOR INDICATED.



CALL BEFORE YOU DIG
1-800-545-6005
48 HOURS NOTICE REQUIRED

PROJECT: 1706ANAY.001
MISSOURI CITY, TX
MISSOURI CITY TO BLACK LAKE

CLARIFICATION NO.	QUANTITY
PROP. 1-2" HDPE	430
PULL 1-864F CABLE	430

MCImetro
ACCESS TRANSMISSION SERVICES
CORPORATION
OUTSIDE PLANT CONSTRUCTION
TITLE: FIBER OPTIC ROUTE
MISSOURI CITY TO BLACK LAKE
MISSOURI CITY, TX

DATE: 7/6/18
ENGINEER: L. STALCUP
DRAWN BY: G.F.S. (TJS)

REVISIONS			
No.	DATE	DESCRIPTION	BY

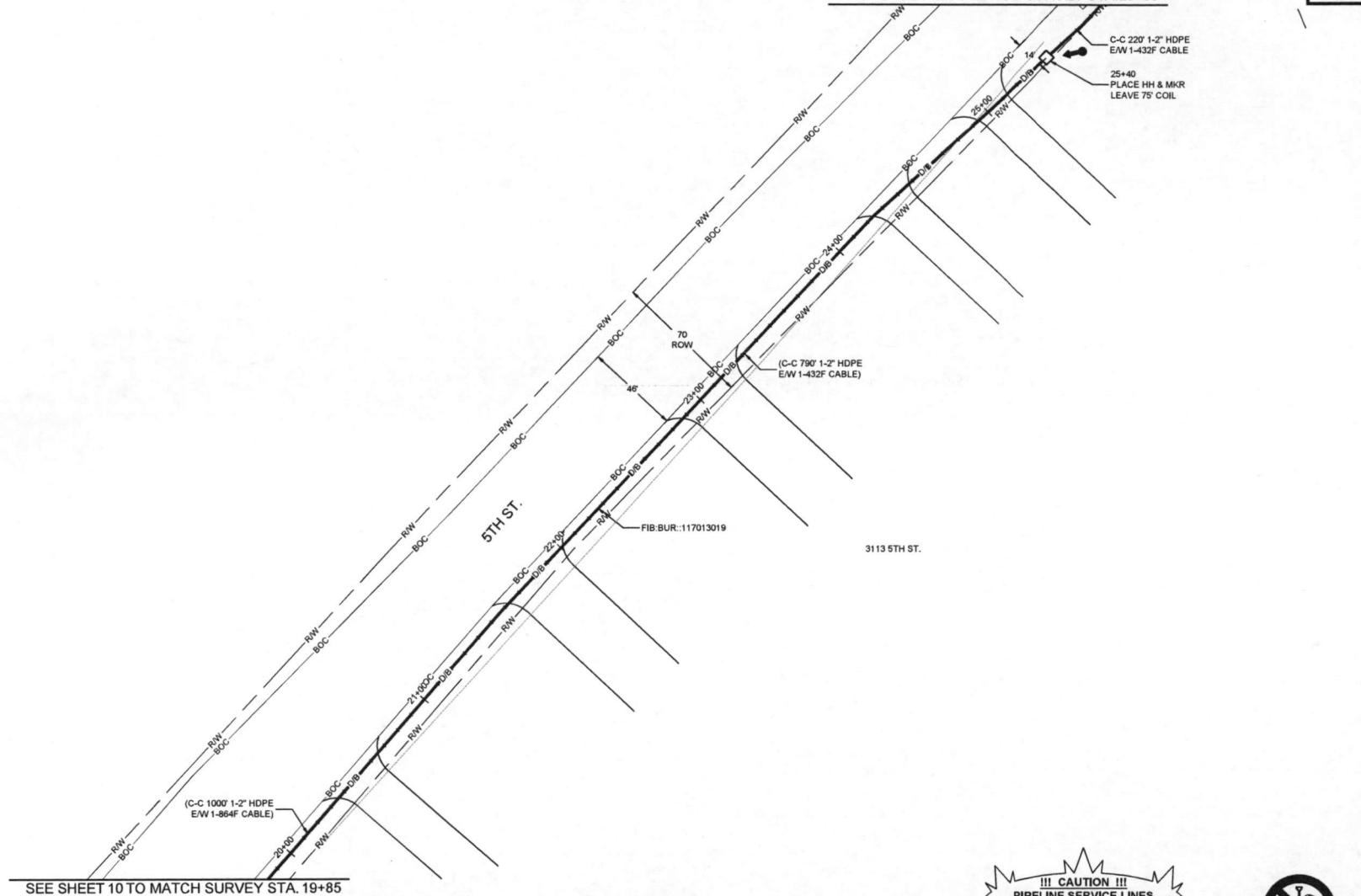
EXCEPT AS MAY BE OTHERWISE PROVIDED BY CONTRACT THESE DRAWINGS AND SPECIFICATIONS SHALL REMAIN THE PROPERTY OF MCI COMMUNICATIONS SERVICES INC. BOTH BEING ISSUED BY STRICT CONFIDENCE AND SHALL NOT BE REPRODUCED, COPIED, OR USED FOR ANY PURPOSE WITHOUT SPECIFIC WRITTEN PERMISSION.

SCALE
HORIZONTAL: 1"= 50'
VERTICAL: 1"= N/A
MP TO MP
SHEET 10 OF 130
FILE: ECC-FBRDL01010AC.LIN

MISSOURI CITY, TX
FORT BEND COUNTY



SEE SHEET 12 TO MATCH SURVEY STA. 25+80



SEE SHEET 10 TO MATCH SURVEY STA. 19+85

PROJECT: 1706ANAY.001
MISSOURI CITY, TX
MISSOURI CITY TO BLACK LAKE

CLARIFICATION NO.	QUANTITY
PLACE HANDHOLE	1
PROP. 1-2" HDPE	430'
PULL 1-864F CABLE	505'
PLACE MARKER	1

McImetro
ACCESS TRANSMISSION SERVICES
CORPORATION
OUTSIDE PLANT CONSTRUCTION
TITLE: FIBER OPTIC ROUTE
MISSOURI CITY TO BLACK LAKE
MISSOURI CITY, TX

DATE: 7/6/18
ENGINEER: L. STALCUP
DRAWN BY: G.F.S. (TJS)

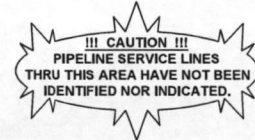
REVISIONS			
NO.	DATE	DESCRIPTION	BY

EXCEPT AS MAY BE OTHERWISE PROVIDED BY CONTRACT THESE DRAWINGS AND SPECIFICATIONS SHALL REMAIN THE PROPERTY OF MCI COMMUNICATIONS SERVICES INC. BOTH BEING ISSUED IN STRICT CONFIDENCE AND SHALL NOT BE REPRODUCED, COPIED, OR USED FOR ANY PURPOSE WITHOUT SPECIFIC WRITTEN PERMISSION.

SCALE
HORIZONTAL: 1"= 50'
VERTICAL: 1"= N/A
MP _____ TO MP _____
SHEET 11 OF 130
FILE: ECC-FBRBLD01011AC.LIN

UNDERGROUND UTILITIES HAVE BEEN PLOTTED FROM AVAILABLE RECORDS AND FIELD OBSERVATIONS BUT ARE NOT NECESSARILY EXACT. IT IS THE CONTRACTORS RESPONSIBILITY TO FIELD LOCATE ALL UNDERGROUND OBSTRUCTIONS AND UTILITIES PRIOR TO CONSTRUCTION. COMPLETE REPAIR OF ANY AND ALL DAMAGES INCURRED SHALL BE AT THE EXPENSE OF THE CONTRACTOR.

RIGHT OF WAY LINES WERE ESTABLISHED BY RESEARCH OF PUBLIC INFORMATION. NO BOUNDARY SURVEY OR PROPERTY LINE SURVEY WAS ESTABLISHED BY GOLDEN FIELD SERVICES, INC. RIGHT OF WAY BOUNDARY MUST BE FIELD VERIFIED BY A REGISTERED PROFESSIONAL LAND SURVEYOR TO ACCURATELY VERIFY RIGHT OF WAY AND PROPERTY LINES PRIOR TO CONSTRUCTION.



CALL BEFORE YOU DIG
1-800-545-6005
48 HOURS NOTICE REQUIRED

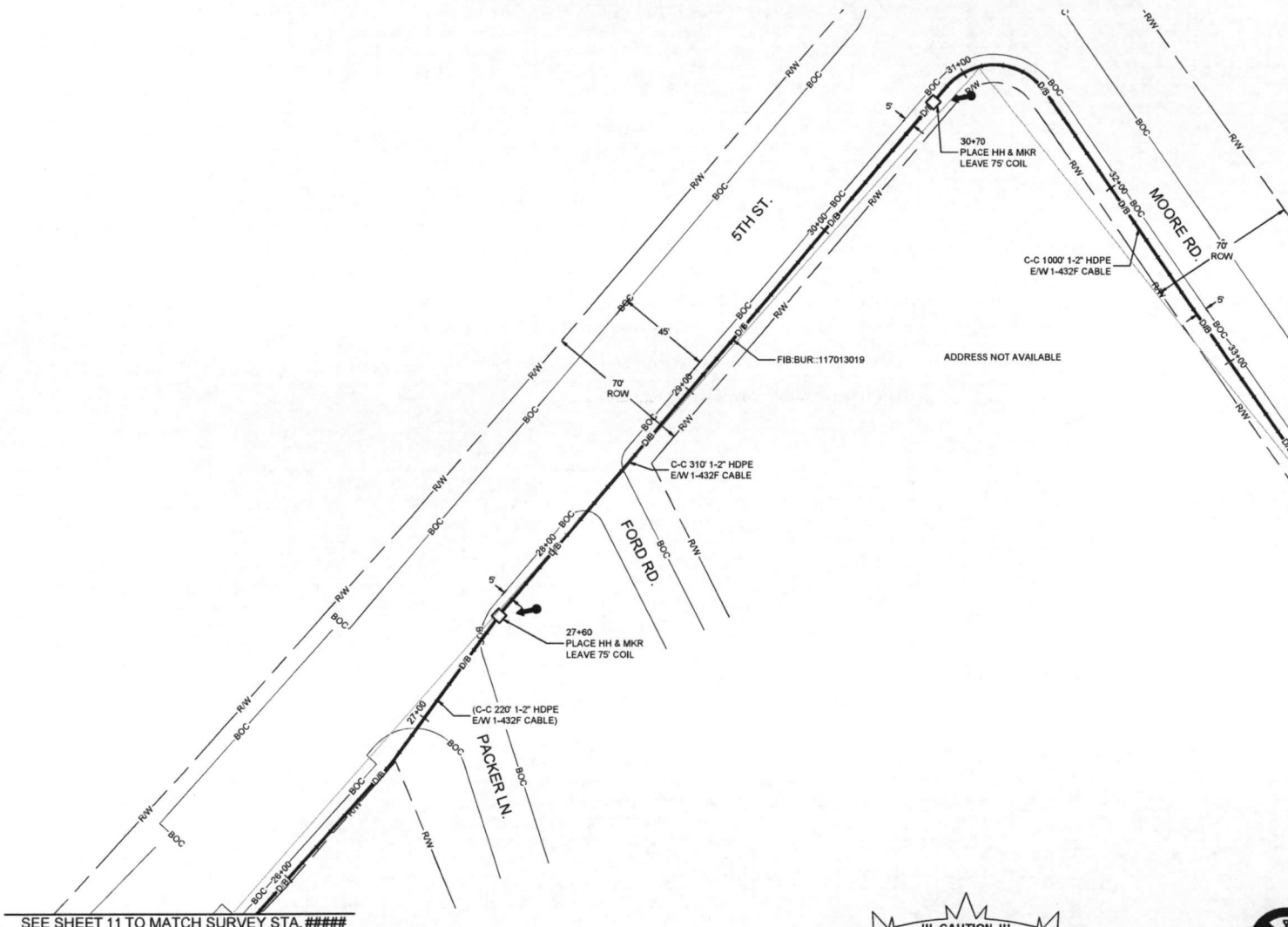
MISSOURI CITY, TX
FORT BEND COUNTY



PROJECT: 1706ANAY.001

MISSOURI CITY, TX
MISSOURI CITY TO BLACK LAKE

CLARIFICATION NO.	QUANTITY
PROP. 1-2" HDPE	430'
PULL 1-864F CABLE	430'

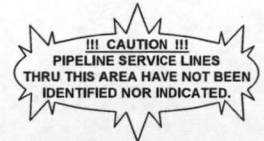


SEE SHEET 13 TO MATCH SURVEY STA. 33+55

SEE SHEET 11 TO MATCH SURVEY STA. #####

UNDERGROUND UTILITIES HAVE BEEN PLOTTED FROM AVAILABLE RECORDS AND FIELD OBSERVATIONS BUT ARE NOT NECESSARILY EXACT. IT IS THE CONTRACTORS RESPONSIBILITY TO FIELD LOCATE ALL UNDERGROUND OBSTRUCTIONS AND UTILITIES PRIOR TO CONSTRUCTION. COMPLETE REPAIR OF ANY AND ALL DAMAGES INCURRED SHALL BE AT THE EXPENSE OF THE CONTRACTOR.

RIGHT OF WAY LINES WERE ESTABLISHED BY RESEARCH OF PUBLIC INFORMATION. NO BOUNDARY SURVEY OR PROPERTY LINE SURVEY WAS ESTABLISHED BY GOLDEN FIELD SERVICES, INC. RIGHT OF WAY BOUNDARY MUST BE FIELD VERIFIED BY A REGISTERED PROFESSIONAL LAND SURVEYOR TO ACCURATELY VERIFY RIGHT OF WAY AND PROPERTY LINES PRIOR TO CONSTRUCTION.



CALL BEFORE YOU DIG
1-800-545-6005
48 HOURS NOTICE REQUIRED

DATE: 7/6/18
ENGINEER: L. STALCUP
DRAWN BY: G.F.S. (TJS)

REVISIONS

No.	DATE	DESCRIPTION	BY

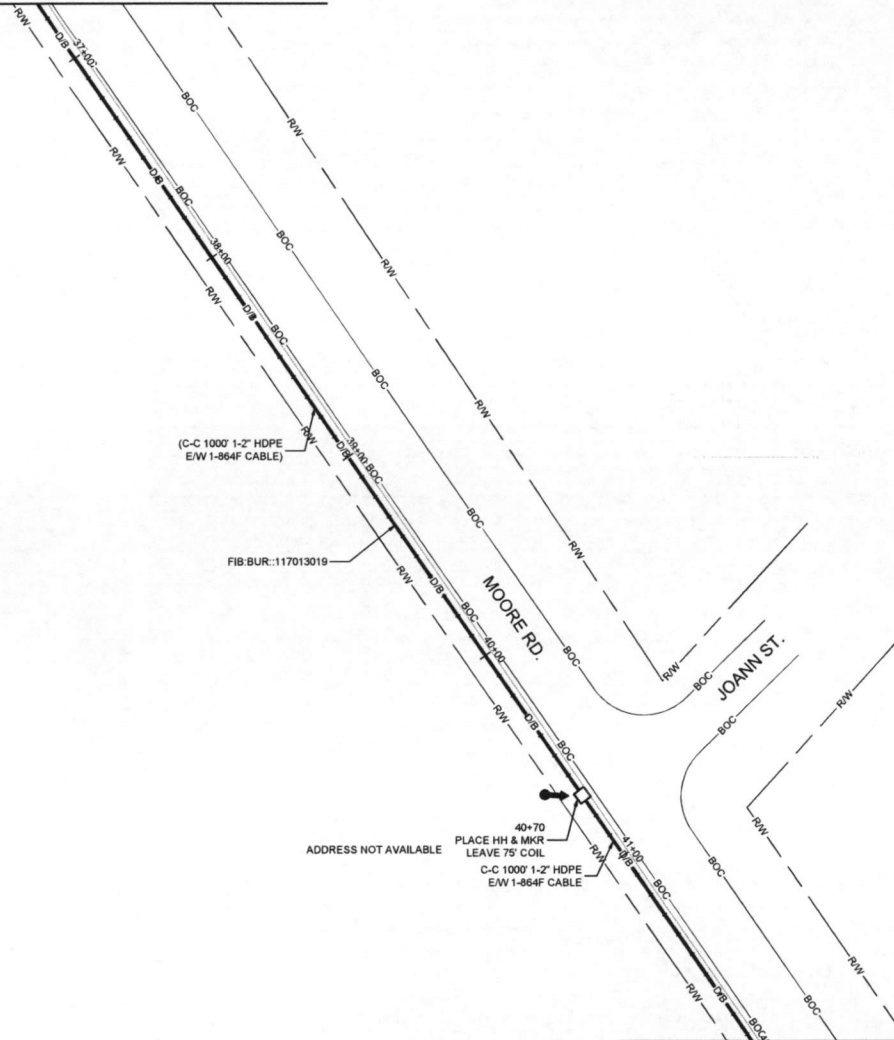
EXCEPT AS MAY BE OTHERWISE PROVIDED BY CONTRACT, THESE DRAWINGS AND SPECIFICATIONS SHALL REMAIN THE PROPERTY OF MCG COMMUNICATIONS SERVICES INC. BOTH BEING ISSUED IN STRICT CONFIDENCE AND SHALL NOT BE REPRODUCED, COPIED, OR USED FOR ANY PURPOSE WITHOUT EXPRESS WRITTEN PERMISSION.

SCALE
HORIZONTAL: 1" = 50'
VERTICAL: 1" = N/A
MP TO MP
SHEET 12 OF 130
FILE: ECC-FBRBD01012AC.LIN

MClmetro
ACCESS TRANSMISSION SERVICES CORPORATION
OUTSIDE PLANT CONSTRUCTION
TITLE: FIBER OPTIC ROUTE
MISSOURI CITY TO BLACK LAKE
MISSOURI CITY, TX

MISSOURI CITY, TX
FORT BEND COUNTY

SEE SHEET 13 TO MATCH SURVEY STA. 36+75



SEE SHEET 15 TO MATCH SURVEY STA. 41+95

UNDERGROUND UTILITIES HAVE BEEN PLOTTED FROM AVAILABLE RECORDS AND FIELD OBSERVATIONS BUT ARE NOT NECESSARILY EXACT. IT IS THE CONTRACTORS RESPONSIBILITY TO FIELD LOCATE ALL UNDERGROUND OBSTRUCTIONS AND UTILITIES PRIOR TO CONSTRUCTION. COMPLETE REPAIR OF ANY AND ALL DAMAGES INCURRED SHALL BE AT THE EXPENSE OF THE CONTRACTOR.

RIGHT OF WAY LINES WERE ESTABLISHED BY RESEARCH OF PUBLIC INFORMATION. NO BOUNDARY SURVEY OR PROPERTY LINE SURVEY WAS ESTABLISHED BY GOLDEN FIELD SERVICES, INC. RIGHT OF WAY BOUNDARY MUST BE FIELD VERIFIED BY A REGISTERED PROFESSIONAL LAND SURVEYOR TO ACCURATELY VERIFY RIGHT OF WAY AND PROPERTY LINES PRIOR TO CONSTRUCTION.

!!! CAUTION !!!
PIPELINE SERVICE LINES
THRU THIS AREA HAVE NOT BEEN
IDENTIFIED NOR INDICATED.



PROJECT: 1706ANAY.001
MISSOURI CITY, TX
MISSOURI CITY TO BLACK LAKE

CLARIFICATION NO.	QUANTITY
PROP. 1-2" HDPE	430
PULL 1-864F CABLE	430

MCimetro
ACCESS TRANSMISSION SERVICES
CORPORATION
OUTSIDE PLANT CONSTRUCTION
TITLE: FIBER OPTIC ROUTE
MISSOURI CITY TO BLACK LAKE
MISSOURI CITY, TX

DATE: 7/6/18
ENGINEER: L. STALCUP
DRAWN BY: G.F.S. (TJS)

REVISIONS

No.	DATE	DESCRIPTION	BY

EXCEPT AS MAY BE OTHERWISE PROVIDED BY CONTRACT, THESE DRAWINGS AND SPECIFICATIONS SHALL REMAIN THE PROPERTY OF MC COMMUNICATIONS SERVICES INC. BOTH REVISIONS AND ORIGINALS SHALL NOT BE REPRODUCED, COPIED, OR USED FOR ANY PURPOSE WITHOUT SPECIFIC WRITTEN PERMISSION.

SCALE
HORIZONTAL: 1"= 50'
VERTICAL: 1"= N/A
MP TO MP
SHEET 14 OF 130
FILE: ECC-FBRBD01014AC.LIN



CALL BEFORE YOU DIG
1-800-545-6005
48 HOURS NOTICE REQUIRED

MISSOURI CITY, TX
FORT BEND COUNTY



PROJECT: 1706ANAY_001

MISSOURI CITY, TX
MISSOURI CITY TO BLACK LAKE

CLARIFICATION NO.	QUANTITY
PLACE HANDHOLE	1
PROP. 1-2" HDPE	181'
PULL 1-864F CABLE	475'
PLACE MARKER	1

MCMetro
ACCESS TRANSMISSION SERVICES
CORPORATION

 OUTSIDE PLANT CONSTRUCTION

 TITLE: FIBER OPTIC ROUTE
MISSOURI CITY TO BLACK LAKE
MISSOURI CITY, TX

DATE: 7/6/18

ENGINEER: L. STALCUP

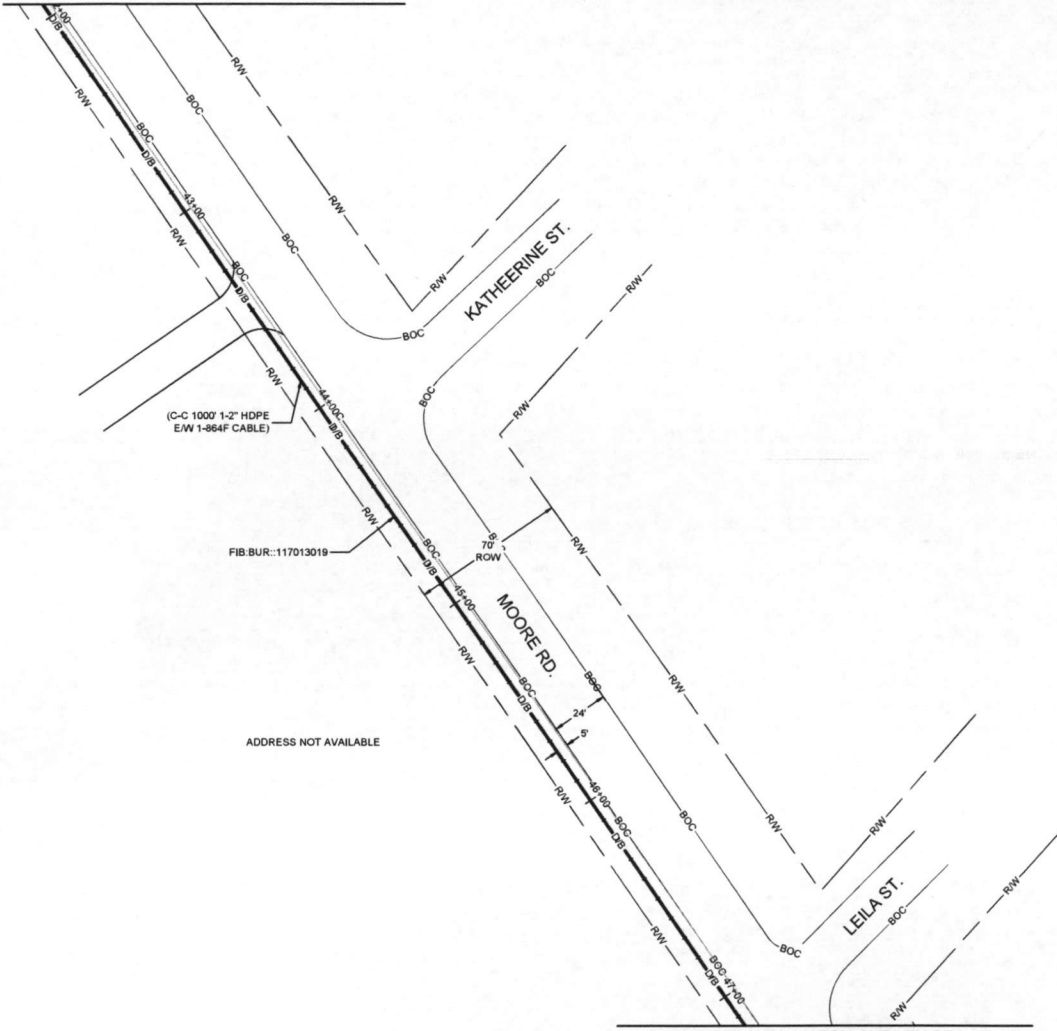
DRAWN BY: G.F.S. (TJS)

REVISIONS			
No.	DATE	DESCRIPTION	BY

EXCEPT AS MAY BE OTHERWISE PROVIDED BY CONTRACT, THESE DRAWINGS AND SPECIFICATIONS SHALL REMAIN THE PROPERTY OF MCM COMMUNICATIONS SERVICES INC. BOTH BEFORE AND AFTER ISSUANCE. THESE DRAWINGS AND SPECIFICATIONS ARE ISSUED IN STRICT CONFIDENCE AND SHALL NOT BE REPRODUCED, COPIED, OR USED FOR ANY PURPOSE WITHOUT SPECIFIC WRITTEN PERMISSION.

SCALE
 HORIZONTAL: 1"= 50'
 VERTICAL: 1"= N/A
 MP TO MP
 SHEET 15 OF 130
 FILE: ECC-FBRBLD0101SAC.LIN

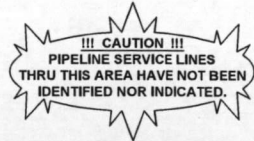
SEE SHEET 14 TO MATCH SURVEY STA. 41+95



SEE SHEET 16 TO MATCH SURVEY STA. 47+15

UNDERGROUND UTILITIES HAVE BEEN PLOTTED FROM AVAILABLE RECORDS AND FIELD OBSERVATIONS BUT ARE NOT NECESSARILY EXACT. IT IS THE CONTRACTORS RESPONSIBILITY TO FIELD LOCATE ALL UNDERGROUND OBSTRUCTIONS AND UTILITIES PRIOR TO CONSTRUCTION. COMPLETE REPAIR OF ANY AND ALL DAMAGES INCURRED SHALL BE AT THE EXPENSE OF THE CONTRACTOR.

RIGHT OF WAY LINES WERE ESTABLISHED BY RESEARCH OF PUBLIC INFORMATION. NO BOUNDARY SURVEY OR PROPERTY LINE SURVEY WAS ESTABLISHED BY GOLDEN FIELD SERVICES, INC.. RIGHT OF WAY BOUNDARY MUST BE FIELD VERIFIED BY A REGISTERED PROFESSIONAL LAND SURVEYOR TO ACCURATELY VERIFY RIGHT OF WAY AND PROPERTY LINES PRIOR TO CONSTRUCTION.



MISSOURI CITY, TX
FORT BEND COUNTY



PROJECT: 1706ANAY.001
MISSOURI CITY, TX
MISSOURI CITY TO BLACK LAKE

CLARIFICATION NO.	QUANTITY
PULL 1-864F CABLE	586'

MClmetro
ACCESS TRANSMISSION SERVICES
CORPORATION
OUTSIDE PLANT CONSTRUCTION
TITLE: FIBER OPTIC ROUTE
MISSOURI CITY TO BLACK LAKE
MISSOURI CITY, TX

DATE: 7/6/18
ENGINEER: L. STALCUP
DRAWN BY: G.F.S. (TJS)

REVISIONS			
No.	DATE	DESCRIPTION	BY

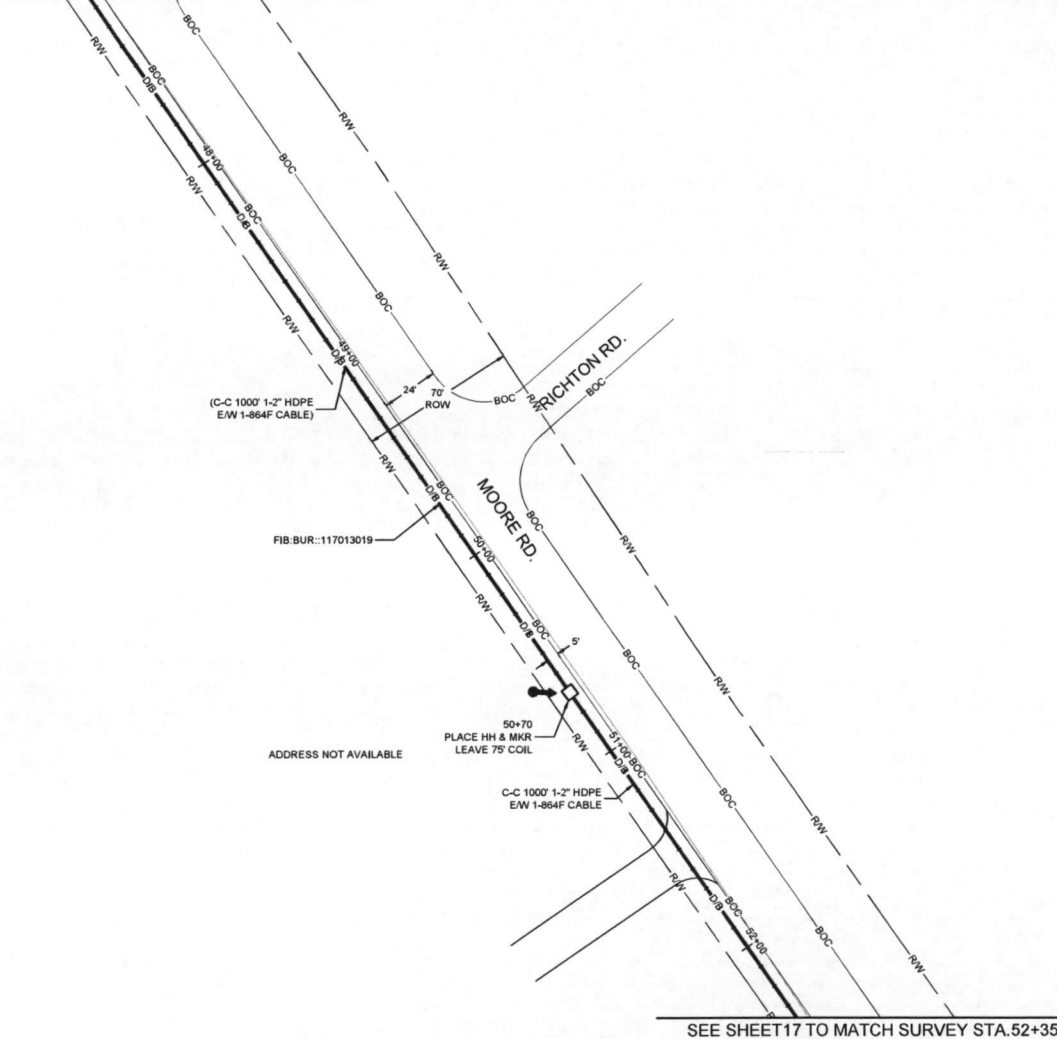
EXCEPT AS MAY BE OTHERWISE PROVIDED BY CONTRACT, THESE DRAWINGS AND SPECIFICATIONS SHALL REMAIN THE PROPERTY OF MCI COMMUNICATIONS SERVICES INC. BOTH BEING ISSUED IN STRICT CONFIDENCE AND SHALL NOT BE REPRODUCED, COPIED, OR USED FOR ANY PURPOSE WITHOUT SPECIFIC WRITTEN PERMISSION.

SCALE
HORIZONTAL: 1"= 50'
VERTICAL: 1"= N/A
MP TO MP
SHEET 16 OF 130
FILE: ECC-FBRBLD01016AC.LIN

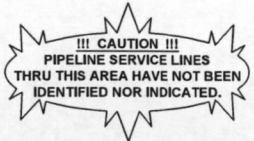


CALL BEFORE YOU DIG
1-800-545-6005
48 HOURS NOTICE REQUIRED

SEE SHEET 15 TO MATCH SURVEY STA. 47+15



SEE SHEET 17 TO MATCH SURVEY STA. 52+35



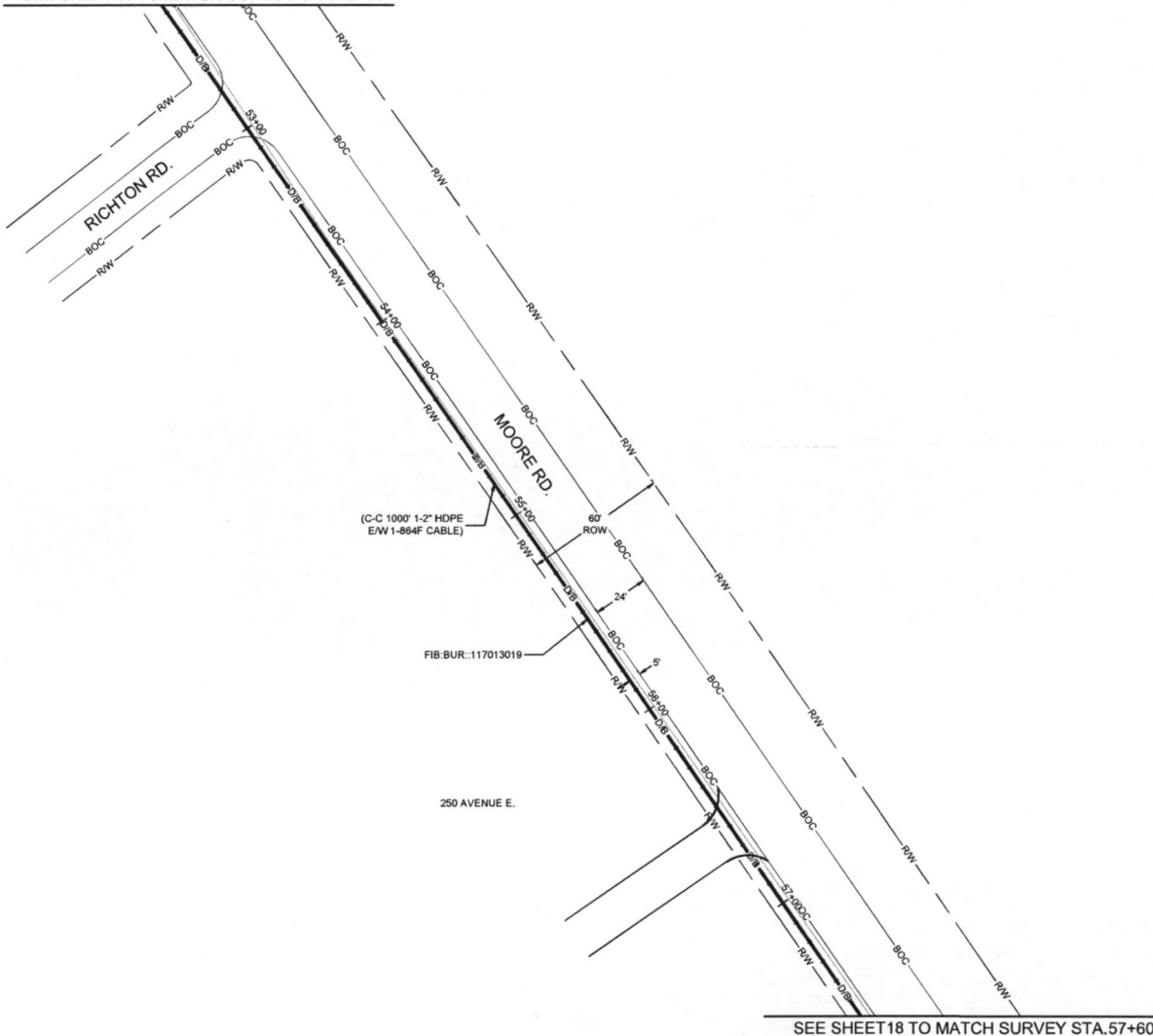
UNDERGROUND UTILITIES HAVE BEEN PLOTTED FROM AVAILABLE RECORDS AND FIELD OBSERVATIONS BUT ARE NOT NECESSARILY EXACT. IT IS THE CONTRACTORS RESPONSIBILITY TO FIELD LOCATE ALL UNDERGROUND OBSTRUCTIONS AND UTILITIES PRIOR TO CONSTRUCTION. COMPLETE REPAIR OF ANY AND ALL DAMAGES INCURRED SHALL BE AT THE EXPENSE OF THE CONTRACTOR.

RIGHT OF WAY LINES WERE ESTABLISHED BY RESEARCH OF PUBLIC INFORMATION. NO BOUNDARY SURVEY OR PROPERTY LINE SURVEY WAS ESTABLISHED BY GOLDEN FIELD SERVICES, INC. RIGHT OF WAY BOUNDARY MUST BE FIELD VERIFIED BY A REGISTERED PROFESSIONAL LAND SURVEYOR TO ACCURATELY VERIFY RIGHT OF WAY AND PROPERTY LINES PRIOR TO CONSTRUCTION.

MISSOURI CITY, TX
FORT BEND COUNTY



SEE SHEET 16 TO MATCH SURVEY STA. 52+35



UNDERGROUND UTILITIES HAVE BEEN PLOTTED FROM AVAILABLE RECORDS AND FIELD OBSERVATIONS BUT ARE NOT NECESSARILY EXACT. IT IS THE CONTRACTORS RESPONSIBILITY TO FIELD LOCATE ALL UNDERGROUND OBSTRUCTIONS AND UTILITIES PRIOR TO CONSTRUCTION. COMPLETE REPAIR OF ANY AND ALL DAMAGES INCURRED SHALL BE AT THE EXPENSE OF THE CONTRACTOR.

RIGHT OF WAY LINES WERE ESTABLISHED BY RESEARCH OF PUBLIC INFORMATION. NO BOUNDARY SURVEY OR PROPERTY LINE SURVEY WAS ESTABLISHED BY GOLDEN FIELD SERVICES, INC.. RIGHT OF WAY BOUNDARY MUST BE FIELD VERIFIED BY A REGISTERED PROFESSIONAL LAND SURVEYOR TO ACCURATELY VERIFY RIGHT OF WAY AND PROPERTY LINES PRIOR TO CONSTRUCTION.

SEE SHEET 18 TO MATCH SURVEY STA. 57+60

!!! CAUTION !!!
PIPELINE SERVICE LINES
THRU THIS AREA HAVE NOT BEEN
IDENTIFIED NOR INDICATED.



CALL BEFORE YOU DIG
1-800-545-6005
48 HOURS NOTICE REQUIRED

PROJECT: 1706ANAY.001
MISSOURI CITY, TX
MISSOURI CITY TO BLACK LAKE

CLARIFICATION NO.	QUANTITY
PLACE HANDHOLE	1
PROP. 1-2" HDPE	350'
PULL 1-864F CABLE	500'
PLACE MARKER	1

MCImetro
ACCESS TRANSMISSION SERVICES
CORPORATION

OUTSIDE PLANT CONSTRUCTION

TITLE: FIBER OPTIC ROUTE
MISSOURI CITY TO BLACK LAKE
MISSOURI CITY, TX

DATE: 7/6/18
ENGINEER: L. STALCUP
DRAWN BY: G.F.S. (TJS)

REVISIONS

No.	DATE	DESCRIPTION	BY

EXCEPT AS MAY BE OTHERWISE PROVIDED BY CONTRACT THESE DRAWINGS AND SPECIFICATIONS SHALL REMAIN THE PROPERTY OF MCI COMMUNICATIONS SERVICES INC. BOTH BEING ISSUED IN STRICT CONFIDENCE AND SHALL NOT BE REPRODUCED, COPIED, OR USED FOR ANY PURPOSE WITHOUT SPECIFIC WRITTEN PERMISSION.

SCALE
HORIZONTAL: 1" = 50'
VERTICAL: 1" = N/A
MP TO MP
SHEET 17 OF 130
FILE: ECC-FBRBLD01017AC.LIN

MISSOURI CITY, TX
FORT BEND COUNTY



PROJECT: 1706ANAY.001
MISSOURI CITY, TX
MISSOURI CITY TO BLACK LAKE

CLARIFICATION NO.	QUANTITY
PROP. 1-2" HDPE	430'
PULL 1-864F CABLE	430'

MC Metro
ACCESS TRANSMISSION SERVICES
CORPORATION

OUTSIDE PLANT CONSTRUCTION

TITLE: FIBER OPTIC ROUTE
MISSOURI CITY TO BLACK LAKE
MISSOURI CITY, TX

DATE: 7/6/18
ENGINEER: L. STALCUP
DRAWN BY: G.F.S. (TJS)

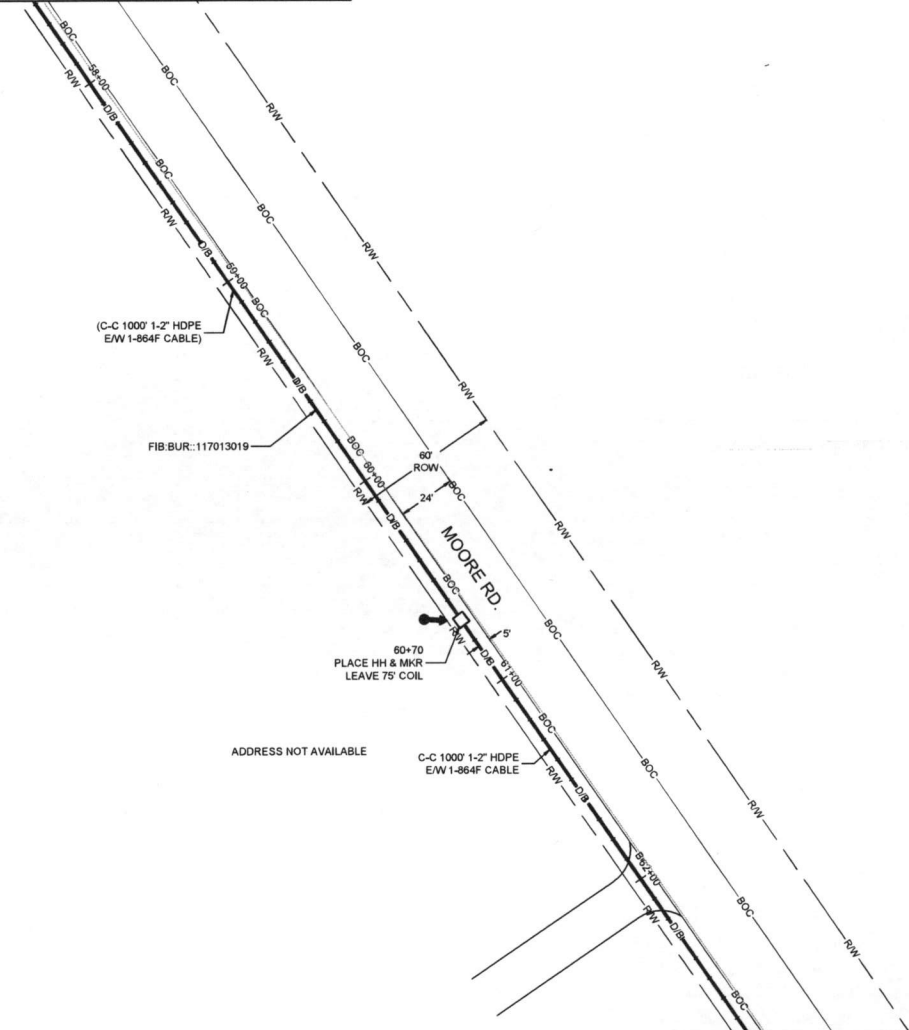
REVISIONS			
No.	DATE	DESCRIPTION	BY

EXCEPT AS MAY BE OTHERWISE PROVIDED BY CONTRACT, THESE DRAWINGS AND SPECIFICATIONS SHALL REMAIN THE PROPERTY OF MC COMMUNICATIONS SERVICES INC. BOTH BEING ISSUED IN STRICT CONFIDENCE AND SHALL NOT BE REPRODUCED, COPIED, OR USED FOR ANY PURPOSE WITHOUT SPECIFIC WRITTEN PERMISSION.

SCALE
HORIZONTAL: 1" = 50'
VERTICAL: 1" = N/A

MP _____ TO MP _____
SHEET 18 OF 130
FILE: ECC-FBRBLD01018AC.LIN

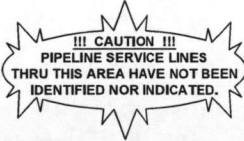
SEE SHEET 17 TO MATCH SURVEY STA. 57+60



SEE SHEET 19 TO MATCH SURVEY STA. 62+80

UNDERGROUND UTILITIES HAVE BEEN PLOTTED FROM AVAILABLE RECORDS AND FIELD OBSERVATIONS BUT ARE NOT NECESSARILY EXACT. IT IS THE CONTRACTORS RESPONSIBILITY TO FIELD LOCATE ALL UNDERGROUND OBSTRUCTIONS AND UTILITIES PRIOR TO CONSTRUCTION. COMPLETE REPAIR OF ANY AND ALL DAMAGES INCURRED SHALL BE AT THE EXPENSE OF THE CONTRACTOR.

RIGHT OF WAY LINES WERE ESTABLISHED BY RESEARCH OF PUBLIC INFORMATION. NO BOUNDARY SURVEY OR PROPERTY LINE SURVEY WAS ESTABLISHED BY GOLDEN FIELD SERVICES, INC. RIGHT OF WAY BOUNDARY MUST BE FIELD VERIFIED BY A REGISTERED PROFESSIONAL LAND SURVEYOR TO ACCURATELY VERIFY RIGHT OF WAY AND PROPERTY LINES PRIOR TO CONSTRUCTION.



CALL BEFORE YOU DIG
1-800-545-6005
48 HOURS NOTICE REQUIRED

MISSOURI CITY, TX
FORT BEND COUNTY



PROJECT: 1706ANAY.001

MISSOURI CITY, TX
MISSOURI CITY TO BLACK LAKE

CLARIFICATION NO.	QUANTITY
PLACE HANDHOLE	1
PROP. 1-2" HDPE	430'
PULL 1-864F CABLE	505'
PLACE MARKER	1

MCMTRANS
ACCESS TRANSMISSION SERVICES
CORPORATION

OUTSIDE PLANT CONSTRUCTION

TITLE: FIBER OPTIC ROUTE
MISSOURI CITY TO BLACK LAKE
MISSOURI CITY, TX

DATE: 7/9/18

ENGINEER: L. STALCUP

DRAWN BY: G.F.S. (TJS)

REVISIONS

No.	DATE	DESCRIPTION	BY

EXCEPT AS MAY BE OTHERWISE PROVIDED BY CONTRACT, THESE DRAWINGS AND SPECIFICATIONS SHALL REMAIN THE PROPERTY OF MCM COMMUNICATIONS SERVICES INC. BOTH BEFORE AND AFTER ISSUANCE. THESE DRAWINGS SHALL BE KEPT IN STRICT CONFIDENCE AND SHALL NOT BE REPRODUCED, COPIED, OR USED FOR ANY PURPOSE WITHOUT SPECIFIC WRITTEN PERMISSION.

SCALE

HORIZONTAL: 1"= 50'

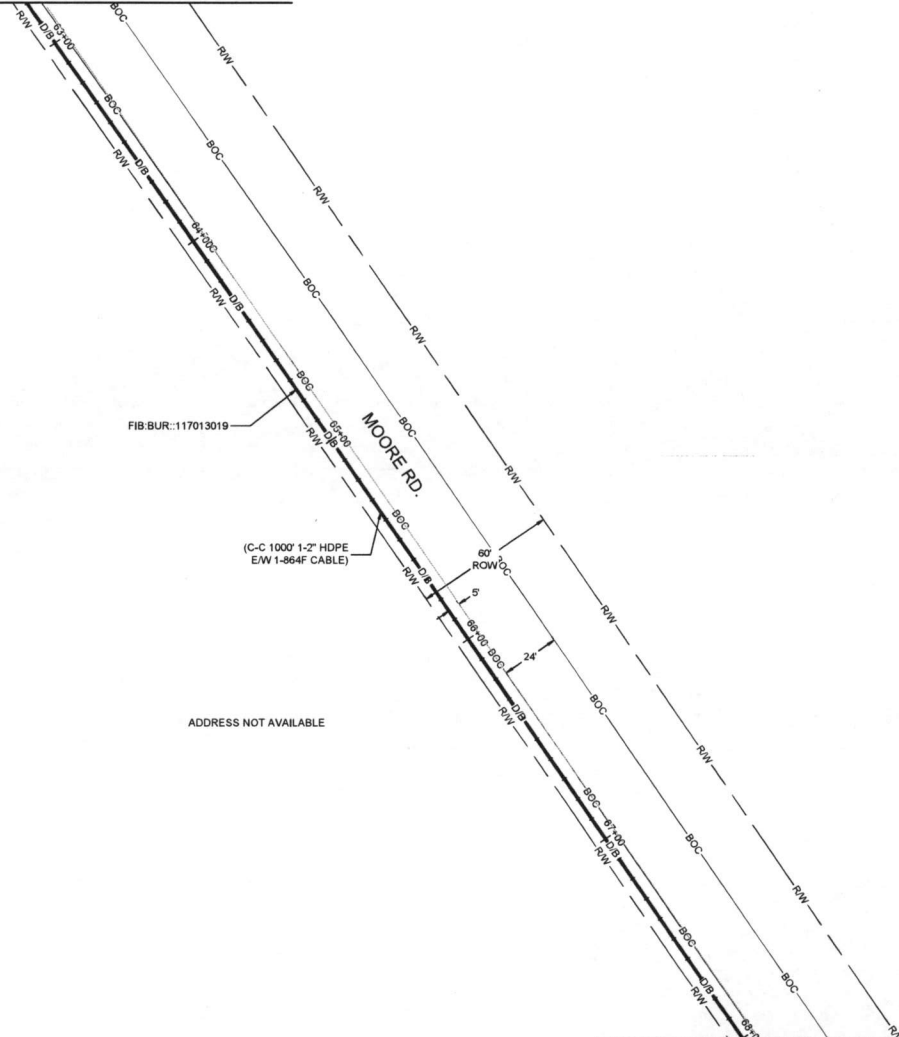
VERTICAL: 1"= N/A

MP TO MP

SHEET 19 OF 130

FILE: ECC-FBRBLD01019AC.LIN

SEE SHEET 18 TO MATCH SURVEY STA. 62+80

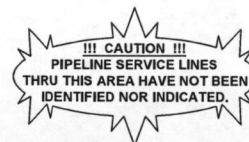


ADDRESS NOT AVAILABLE

SEE SHEET 20 TO MATCH SURVEY STA. 68+00

UNDERGROUND UTILITIES HAVE BEEN PLOTTED FROM AVAILABLE RECORDS AND FIELD OBSERVATIONS BUT ARE NOT NECESSARILY EXACT. IT IS THE CONTRACTORS RESPONSIBILITY TO FIELD LOCATE ALL UNDERGROUND OBSTRUCTIONS AND UTILITIES PRIOR TO CONSTRUCTION. COMPLETE REPAIR OF ANY AND ALL DAMAGES INCURRED SHALL BE AT THE EXPENSE OF THE CONTRACTOR.

RIGHT OF WAY LINES WERE ESTABLISHED BY RESEARCH OF PUBLIC INFORMATION. NO BOUNDARY SURVEY OR PROPERTY LINE SURVEY WAS ESTABLISHED BY GOLDEN FIELD SERVICES, INC.. RIGHT OF WAY BOUNDARY MUST BE FIELD VERIFIED BY A REGISTERED PROFESSIONAL LAND SURVEYOR TO ACCURATELY VERIFY RIGHT OF WAY AND PROPERTY LINES PRIOR TO CONSTRUCTION.



CALL BEFORE YOU DIG
1-800-545-6005
48 HOURS NOTICE REQUIRED

