

**REVIEW BY FORT BEND COUNTY
COMMISSIONERS COURT**

14C
**Fort Bend County
Engineering Department**
301 Jackson Suite 401
Richmond, Texas 77469
281.633.7500
Permits@fortbendcountytx.gov

Right of Way Permit
 Commercial Driveway Permit
Permit No: 2018-22797

Applicant: MCI MetroAccess Transmission Services, Corp./Golden Field Services

Job Location Site: 5th Street, Missouri City, TX 77459

Bond No. **Date of Bond:** 5/1/2017 **Amount:** \$50,000.00

The above applicant came to make use of certain Fort Bend County property subject to, "The Order Regulating the Laying, Construction, Maintenance, and Repair of Buried Cables, Conduits, and Pole Lines, In, Under, Across or Along Roads, Streets, Highways, and Drainage Ditches in Fort Bend County, Texas, Under the Jurisdiction of the Commissioners Court of Fort Bend County, Texas," as passed by the Commissioners Court of Fort Bend County, Texas, of the Minutes of the Commissioners Court of Fort Bend County, Texas, to the extent that such order is not inconsistent with Chapter 181, Vernon's Texas Statutes and Codes Annotated.

Notes:

1. Evidence of review by the Commissioners Court must be kept on the job site and failure to do so constitutes grounds for job shutdown.
2. Written notices are required:
 - a. 48 hours in advance of construction start up, and
 - b. When construction is completed and ready for final inspection, submit notification to Permit Administrator thru MyGovernmentOnline.org portal.
3. This permit expires one (1) year from date of permit if construction has not commenced.

On this 4th day of September, 2018, Upon Motion of Commissioner Meyers, seconded by Commissioner MORales, duly put and carried, it is ORDERED, ADJUDGED AND DECREED that said notice of said above purpose is hereby acknowledged by the Commissioners Court of Fort Bend County, Texas, and that said notice be placed on record according to the regulation order thereof.

Signature

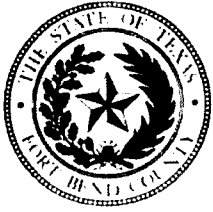
By:
County Engineer

Presented to Commissioners Court and approved.

Date Recorded 9.7.2018 ^{ns} Comm. Court No. 14c

By: N/A
Drainage District Engineer/Manager

Clerk of Commissioners Court
By:
Deputy



**PERMIT APPLICATION REVIEW FORM FOR
CABLE, CONDUIT, AND POLE LINE ACTIVITY
IN FORT BEND COUNTY**

**Fort Bend County
Engineering Department**
301 Jackson Suite 401
Richmond, Texas 77469
281.633.7500
Permits@fortbendcountytexas.gov

- Right of Way Permit
 Commercial Driveway Permit

Permit No: 2018-22797

The following "Notice of Proposed Cable, Conduit, and/or Pole Line activity in Fort Bend County" and accompanying attachments have been reviewed and the notice conforms to appropriate regulations set by Commissioner's Court of Fort Bend County, Texas.

(1) COMPLETE APPLICATION FORM:

- a. Name of road, street, and/or drainage ditch affected.
 b. Vicinity map showing course of directions
 c. Plans and specifications

(2) BOND:

- County Attorney, approval when applicable.
- Perpetual bond currently posted. Bond No: ██████████ Amount: \$50,000.00
- Performance bond submitted. Bond No: _____ Amount: _____
- Cashier's Check Check No: _____ Amount: _____

(3) DRAINAGE DISTRICT APPROVAL (WHEN APPLICABLE):

Drainage District Approval

Date

We have reviewed this project and agree it meets minimum requirements.



Permit Administrator

8/24/2018

Date

MCI metro
ACCESS TRANSMISSION SERVICES CORPORATION

OUTSIDE PLANT CONSTRUCTION
FIBER OPTIC CABLE ROUTE

ECC FIBER BUILD: 1708AOZQ.036
BH-MISSOURI CITY TO BISONNET
HOUSTON, TX

SITE CODE: HODATX

PROJECT STATUS: CONSTRUCTION

DATE: 8/10/18

GENERAL NOTES / CLARIFICATION NOTES

GENERAL NOTES

1. VERIZON BUSINESS COMPRISES THE FOLLOWING OPERATING ENTITIES:

- MCI COMMUNICATIONS SERVICES, INC.
- MCI METRO COMMUNICATIONS SERVICES, INC.
- MCI METRO ACCESS TRANSMISSION SERVICES OF VIRGINIA, INC.
- MCI METRO ACCESS TRANSMISSION SERVICES OF MASSACHUSETTS, INC.
- METROPOLITAN FIBER SYSTEMS OF NEW YORK, INC.

2. ALL WORK TO BE PERFORMED IN STRICT ACCORDANCE WITH THE APPLICABLE CODES OR REQUIREMENTS OF ANY REGULATING GOVERNMENTAL AGENCY, VERIZON BUSINESS AND THE RIGHT-OF-WAY GRANTOR.

3. LOCATIONS OF SOME OF THE PHYSICAL FEATURES WERE OBTAINED FROM DATED RAILROAD EVALUATION MAPS OR OTHER DRAWINGS AND MAY NOT BE AS SHOWN OR DEPICTED ON THESE DRAWINGS.
4. UNDERGROUND UTILITIES HAVE BEEN PLOTTED FROM AVAILABLE RECORDS AND FIELD OBSERVATIONS BUT ARE NOT NECESSARILY EXACT. THEREFORE, UTILITY LOCATIONS WILL BE VERIFIED AT LEAST 100 FEET IN ADVANCE OF TRENCHING OR PLOWING, SO THAT CHANGES IN CABLE PLACEMENT CAN BE MADE IN THE EVENT OF CONFLICT.
5. ALL KNOWN BURIED OBSTRUCTIONS ARE SHOWN ON THE CONSTRUCTION DRAWINGS. ANY AND ALL OTHERS ENCOUNTERED ARE ALSO THE RESPONSIBILITY OF THE CONTRACTOR TO LOCATE, PROTECT AND REPAIR IF DAMAGED.
6. ANY AND ALL IMPROVEMENTS, SUCH AS ASPHALT OR CONCRETE PAVEMENT, CURBS, GUTTERS, WALKS, DRAINAGE DITCHES, EMBANKMENTS, SHRUBS, TREES, GRASS SOD, ETC., IF DAMAGED, SHALL BE RESTORED TO ORIGINAL CONDITION.
7. EQUIPMENT TYPES SPECIFIED HEREIN (IE: "BACKHOE", "SWAMP PLOW" ETC.) ARE SUGGESTIONS ONLY AND ARE NOT INTENDED AS REQUIREMENTS. CONTRACTOR WILL BE NOTIFIED AS TO EXPECTATIONS.
8. SHORING OF BORE PITS AND TRENCHES IN ACCORDANCE WITH OSHA REGULATIONS IS MANDATORY.
9. BURIED CABLE MARKERS WILL BE PLACED AT ALL UNDERGROUND UTILITY LOCATIONS AND ALL OTHER LOCATIONS IN ACCORDANCE WITH THE CONSTRUCTION DRAWINGS AND THE OUTSIDE PLANT HANDBOOK.
10. ALL 4" ID CONDUIT WILL BE SCHEDULE 40 (EG: PVC OR GSP/BSP), OR AS SPECIFIED.
11. UNDERGROUND CONDUIT WILL BE PLACED AT 48" MINIMUM COVER UNLESS OTHERWISE SPECIFIED ON THE CONSTRUCTION DRAWINGS.

CLARIFICATION NOTES

1. STATION
2. LOCATION
3. CLARIFICATION NO. AND MINIMUM COVER
4. QUANTITY LINEAR FOOTAGE/SQUARE FOOTAGE, SIZE OF MANHOLE/HANDHOLE SIZE OF PULL/SPLICE BOX, DIMENSION OF WALL, HEIGHT/CLASS/TYPICAL OF POLE
5. TYPICAL DRAWING NO. AND TYPICAL DETAIL DRAWING NUMBER
6. PLANT ACCOUNTING CODE
7. SPECIFIED CONDUIT, HANDHOLE/MANHOLE NO., SPECIFIED PURPOSE AND MATERIAL, BRIDGE NO. AND RAILROAD STATION, MATERIAL, POLE NO.

1.
2.
3.
4.
5.
6.
7.

ADDENDUM NOTES

CLARIFICATION NOTES (CONTINUED)

100	110	JACK AND DRY BORE CONDUIT(S)
200	210	PLACE CONDUIT
	212	PLACE HIGH DENSITY POLYETHYLENE (HDPE)
	213	ROCK ADDER
	214	SLURRY BACKFILL ADDER
	215	EXPOSE CONDUIT
	216	EXPOSE CONDUIT AND RELOCATE
	217	EXPOSE CONDUIT AND REPLACE/SUBSTITUTE
	218	EXPOSE AND REMOVE CONDUIT
	219	EXPOSE AND REMOVE CONDUIT (ABANDONED)
	220	CONCRETE ENCASE
	221	REMOVE CONCRETE ENCASEMENT
	222	REMOVE CONCRETE CAP
	240	PLACE HANDHOLE
	244	REMOVE EXISTING HANDHOLE
	245	RELOCATE HANHOLE
	246	REPLACE/SUBSTITUTE HANDHOLE
	247	EXCAVATE SPLICE PIT
	250	PLACE MANHOLE
	252	REMOVE EXISTING MANHOLE
	255	RELOCATE PRECAST MANHOLE
	256	REPLACE/SUBSTITUTE PRECAST MANHOLE
	180	CONSTRUCT WALL
	270	REMOVE AND RESTORE ASPHALT
	280	REMOVE AND RESTORE CONCRETE
	281	REMOVE AND RESTORE SIDEWALK
	282	REMOVE AND RESTORE CURBING
300	310	ATTACH CONDUIT TO WALL OR STRUCTURE
	315	DETACH CONDUIT FROM WALL OR STRUCTURE
	320	CORE BORE
	330	ATTACH PULL/SPLICE BOX TO WALL OR STRUCTURE
400	410	PULL CABLE
	411	PULL THROUGH DUCT (INNERDUCT)
	415	REMOVE CABLE FROM CONDUIT
	420	REPOSITION ACTIVE CABLE SLACK
500	510	DIRECT BURY CABLE
	515	EXPOSE DIRECT BURIED CABLE
	516	EXPOSE DIRECT BURIED CABLE AND RELOCATE
	517	REMOVE AND DISPOSE OF CABLE
	520	PLACE AERIAL CABLE
	525	RELOCATE AERIAL CABLE
	518	DELASH AERIAL CABLE
	527	RELASH AERIAL CABLE
	528	REMOVE AERIAL CABLE
	530	PLACE POLE/PUSH BRACE
	535	REMOVE POLE/PUSH BRACE
600	610	JETTING CONDUIT
	620	EMBEDMENT PLOW
	630	DIRECTIONAL BORE
700	710	PLACE BURIED CABLE MARKERS AND SIGNS/MWCOM
		WATER CROSSING SIGNS
	711	PLACE ISOLATOR/PROTECTION SYSTEM AT EXISTING
	713	HANDHOLES/MANHOLES
	712	REMOVE BURIED CABLE MARKER POST/HARDWARE
	714	REMOVE CONCRETE BURIED CABLE MARKER POST



PROJECT: 1708AQZQ.036
MISSOURI CITY, TX
BH-MISSOURI CITY TO BISONNET

MCI metro
ACCESS TRANSMISSION SERVICES
CORPORATION
OUTSIDE PLANT CONSTRUCTION
TITLE: FIBER OPTIC ROUTE
BH-MISSOURI CITY TO BISONNET
MISSOURI CITY, TX

DATE: 8/10/18
ENGINEER: L. STALCUP
DRAWN BY: G.F.S. (JCV)

REVISIONS			
No.	DATE	DESCRIPTION	BY

EXCEPT AS MAY BE OTHERWISE PROVIDED BY CONTRACT THESE DRAWINGS AND SPECIFICATIONS SHALL REMAIN THE PROPERTY OF MCI COMMUNICATIONS SERVICES INC. BOTH BEING ISSUED IN STRICT CONFIDENCE AND SHALL NOT BE REPRODUCED, COPIED, OR USED FOR ANY PURPOSE WITHOUT SPECIFIC WRITTEN PERMISSION

SCALE

HORIZONTAL: 1"= N/A
VERTICAL: 1"= N/A

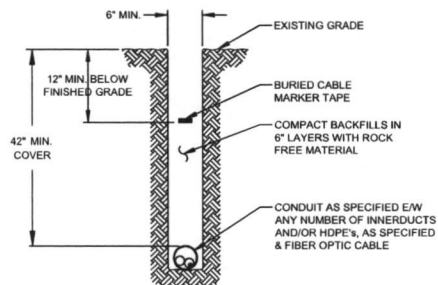
MP _____ TO MP _____
SHEET 04 OF 71

FILE: ECC-FBRBLD01004 AC.LIN

CONSTRUCTION DETAILS

TYPICAL DETAIL "A"

TRENCH & PLACE CONDUIT



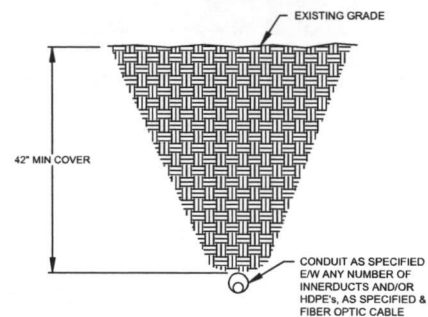
TYPICAL DETAIL "B"

CROSS SECTION OF PROPOSED HDPE



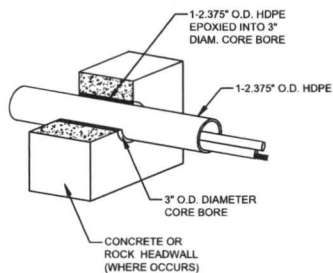
TYPICAL DETAIL "C"

DIRECTIONAL BORE CROSS SECTION FOR CONDUIT



TYPICAL DETAIL "D"

3" CORE BORE



NOTE:
EPOXY GROUT IS USED AT BOTH ENDS OF CORE BORE TO SEAL GAP BETWEEN 2.375" CONDUIT AND PVC SLEEVE.



PROJECT: 1708AOZQ.036

MISSOURI CITY, TX

BH-MISSOURI CITY TO BISSONNET

MClmetro
 ACCESS TRANSMISSION SERVICES
 CORPORATION
 OUTSIDE PLANT CONSTRUCTION
 TITLE: FIBER OPTIC ROUTE
 BH-MISSOURI CITY TO BISSONNET
 MISSOURI CITY, TX

DATE: 8/10/18

ENGINEER: L. STALCUP

DRAWN BY: G.F.S. (JCV)

REVISIONS

No.	DATE	DESCRIPTION	BY

EXCEPT AS MAY BE OTHERWISE PROVIDED BY CONTRACT, THESE DRAWINGS AND SPECIFICATIONS SHALL REMAIN THE PROPERTY OF MCI COMMUNICATIONS SERVICES INC. BOTH BEING ISSUED IN STRICT CONFIDENCE AND SHALL NOT BE REPRODUCED, COPIED, OR USED FOR ANY PURPOSE WITHOUT SPECIFIC WRITTEN PERMISSION.

SCALE

HORIZONTAL: 1"= N/A

VERTICAL: 1"= N/A

MP TO MP

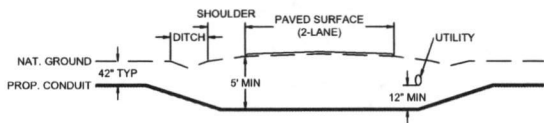
SHEET 06 OF 71

FILE: ECC-FBRBLD01006AC.LIN

TYPICAL CROSSING PROFILE DETAILS: UNDERGROUND

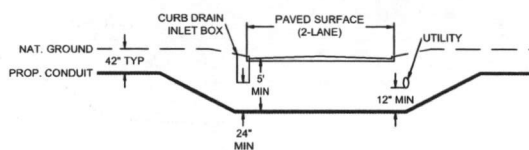
TYPICAL DETAIL "A"

TWO LANE - ASPHALT ROAD - NO CURB



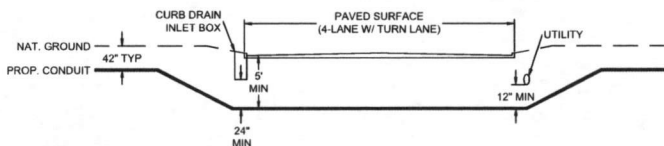
TYPICAL DETAIL "B"

TWO LANE - CURBED ROAD



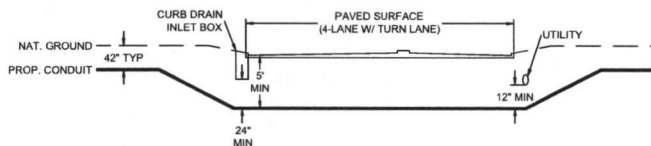
TYPICAL DETAIL "C"

FOUR LANE (W/ TURN LANE) - CURBED ROAD - NO MEDIAN



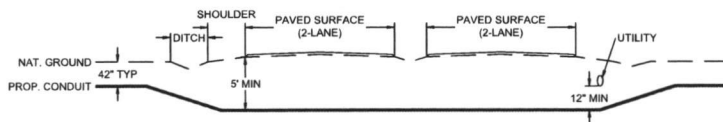
TYPICAL DETAIL "D"

FOUR LANE (W/ TURN LANE) - CURBED ROAD - WITH MEDIAN



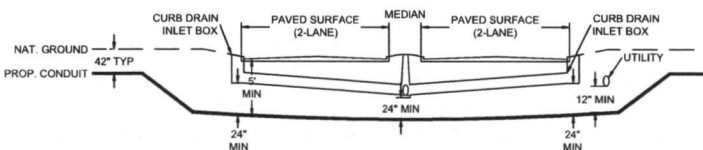
TYPICAL DETAIL "E"

4 LANE - SPLIT ASPHALT ROAD - NO CURB



TYPICAL DETAIL "F"

4 LANE - SPLIT CURBED ROAD



PROJECT: 1708AOZQ.036

MISSOURI CITY, TX

BH-MISSOURI CITY TO BISONNET

MCI/FIBRE
ACCESS TRANSMISSION SERVICES
CORPORATION

OUTSIDE PLANT CONSTRUCTION
TITLE: FIBER OPTIC ROUTE
BH-MISSOURI CITY TO BISONNET
MISSOURI CITY, TX

DATE: 8/10/18

ENGINEER: L. STALCUP

DRAWN BY: G.F.S. (JCV)

REVISIONS

No.	DATE	DESCRIPTION	BY

EXCEPT AS MAY BE OTHERWISE PROVIDED BY CONTRACT, THESE DRAWINGS AND SPECIFICATIONS SHALL REMAIN THE PROPERTY OF MCI COMMUNICATIONS SERVICES INC. SOFT BEING ISSUED IN STRICT CONFIDENCE AND SHALL NOT BE REPRODUCED, COPIED, OR USED FOR ANY PURPOSE WITHOUT SPECIFIC WRITTEN PERMISSION

SCALE

HORIZONTAL: 1"= N/A

VERTICAL: 1"= N/A

MP TO MP

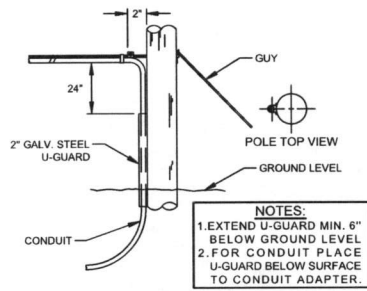
SHEET 6A OF 71

FILE: ECC-FBRBD01006BC LIN

GENERAL AERIAL CONSTRUCTION DETAILS

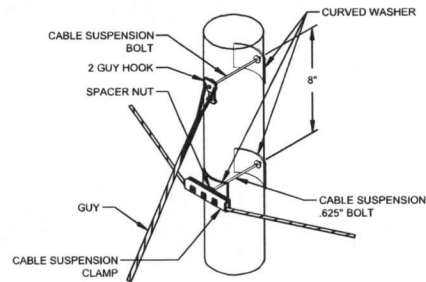
TYPICAL DETAIL "A"

POLE ARRANGEMENT FOR AERIAL TO BURIED



TYPICAL DETAIL "D"

SUSPENSION STRAND - PULL TOWARD POLE - LESS THAN 5 FEET



TYPICAL DETAIL "G"

JOINING 045 LASHING WIRE



FORMING WIRE OVER STUD OF CLAMP

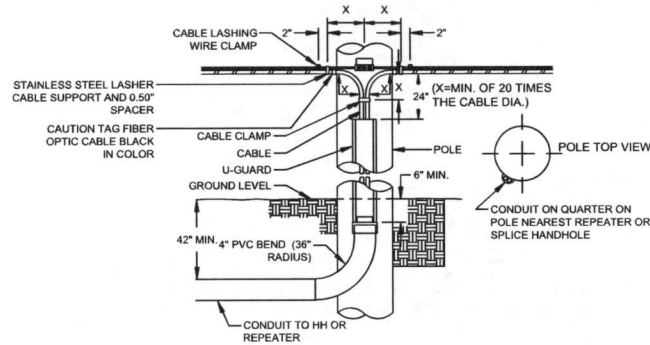
FORMING LASHING WIRE AROUND STRAND

REMOVE ANY SLACK IN THE LASHING WIRE BY MAINTAINING A PULL ON THE WIRE AND TAPPING THE STRAND SHARPLY. THEN FORM THE WIRE OVER THE STUD AND TIGHTEN THE NUT. CUT THE FREE END OF THE LASHING WIRE OFF 0.75\"/>

FORM THE LASHING WIRE AROUND THE STRAND AND PLACE IT BELOW THE STUD AND BETWEEN THE SECOND WASHER AND STUD SHOULDER.

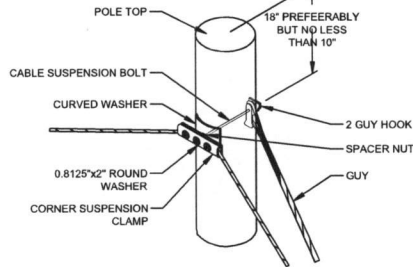
TYPICAL DETAIL "B"

POLE ARRANGEMENT FOR REPEATER OR HANDHOLE LOCATION



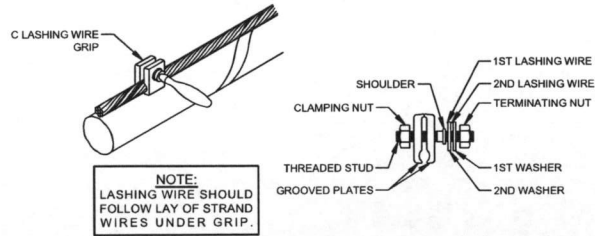
TYPICAL DETAIL "E"

SUSPENSION STRAND - PULL AWAY FROM POLE - 5 FEET OR MORE



TYPICAL DETAIL "H"

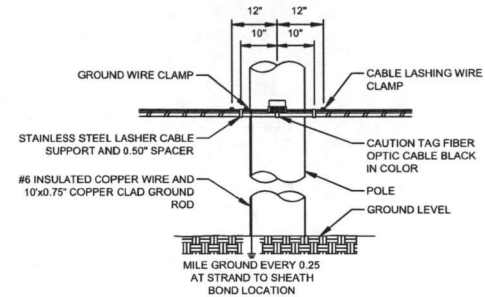
LASHING WIRE GRIP AND CLAMP



NOTE:
LASHING WIRE SHOULD FOLLOW LAY OF STRAND WIRES UNDER GRIP.

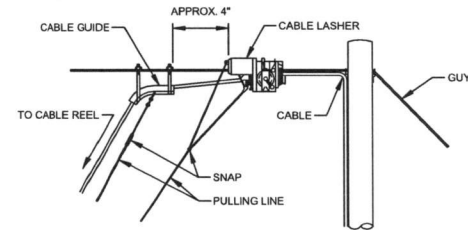
TYPICAL DETAIL "C"

TYPICAL CABLE & HARDWARE INSTALLATION



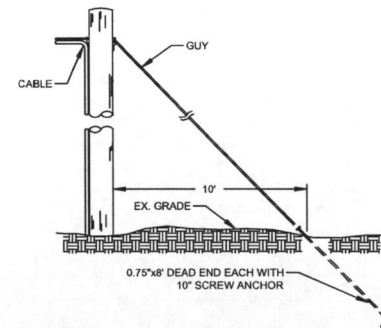
TYPICAL DETAIL "F"

TYPICAL ARRANGEMENT OF CABLE LASHER AND CABLE GUIDE



TYPICAL DETAIL "I"

ANCHOR & DOWN GUY



PROJECT: 1708AOZQ.036

MISSOURI CITY, TX

BH-MISSOURI CITY TO BISSONNET

M/Clinto
ACCESS TRANSMISSION SERVICES
CORPORATION

OUTSIDE PLANT CONSTRUCTION
TITLE: FIBER OPTIC ROUTE
BH-MISSOURI CITY TO BISSONNET
MISSOURI CITY, TX

DATE: 8/10/18

ENGINEER: L. STALCUP

DRAWN BY: G.F.S. (JCV)

REVISIONS

No.	DATE	DESCRIPTION	BY

EXCEPT AS MAY BE OTHERWISE PROVIDED BY CONTRACT, THESE DRAWINGS AND SPECIFICATIONS SHALL REMAIN THE PROPERTY OF M/C COMMUNICATIONS SERVICES INC. BOTH BEING ISSUED IN STRICT CONFIDENCE AND SHALL NOT BE REPRODUCED, COPIED, OR USED FOR ANY PURPOSE WITHOUT SPECIFIC WRITTEN PERMISSION.

SCALE

HORIZONTAL: 1"= N/A

VERTICAL: 1"= N/A

MP TO MP

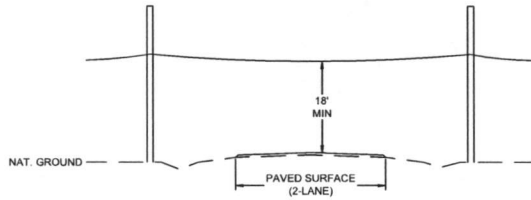
SHEET 6B OF 71

FILE: ECC-FBRLD01006BC.LIN

TYPICAL CROSSING PROFILE DETAILS: AERIAL

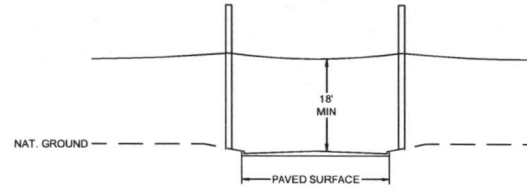
TYPICAL DETAIL "A"

TWO LANE - ASPHALT ROAD - NO CURB



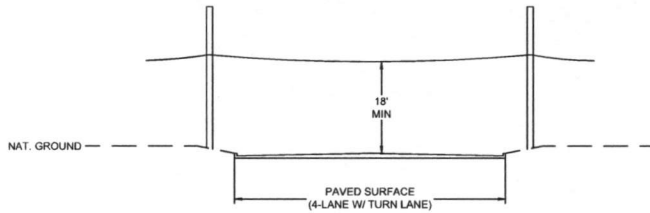
TYPICAL DETAIL "B"

TWO LANE - CURBED ROAD



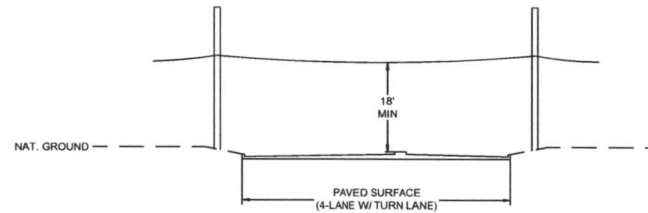
TYPICAL DETAIL "C"

FOUR LANE (W/ TURN LANE) - CURBED ROAD - NO MEDIAN



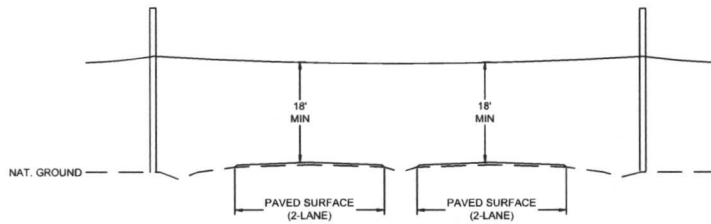
TYPICAL DETAIL "D"

FOUR LANE (W/ TURN LANE) - CURBED ROAD - WITH MEDIAN



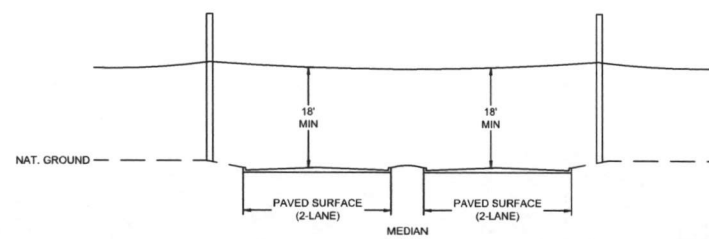
TYPICAL DETAIL "E"

4 LANE - SPLIT ASPHALT ROAD - NO CURB



TYPICAL DETAIL "F"

4 LANE - SPLIT CURBED ROAD



PROJECT: 1708AOZQ.036
MISSOURI CITY, TX
BH-MISSOURI CITY TO BISSONNET

MCImetro
ACCESS TRANSMISSION SERVICES
CORPORATION
OUTSIDE PLANT CONSTRUCTION
TITLE: FIBER OPTIC ROUTE
BH-MISSOURI CITY TO BISSONNET
MISSOURI CITY, TX

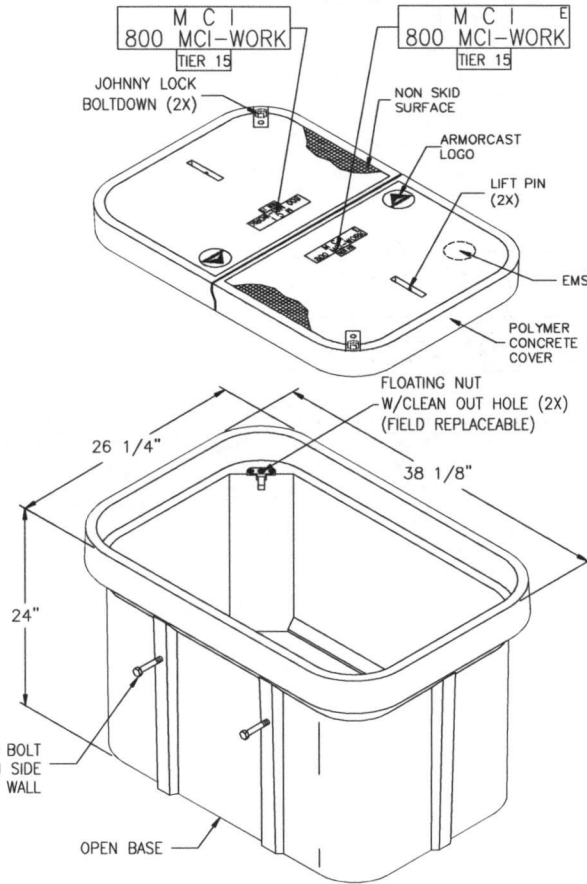
DATE: 8/10/18
ENGINEER: L. STALCUP
DRAWN BY: G.F.S. (JCV)

REVISIONS			
No.	DATE	DESCRIPTION	BY

EXCEPT AS MAY BE OTHERWISE PROVIDED BY CONTRACT, THESE DRAWINGS AND SPECIFICATIONS SHALL REMAIN THE PROPERTY OF MCI COMMUNICATIONS SERVICES INC. BOTH BEING ISSUED IN STRICT CONFIDENCE AND SHALL NOT BE REPRODUCED, COPIED, OR USED FOR ANY PURPOSE WITHOUT SPECIFIC WRITTEN PERMISSION

SCALE
HORIZONTAL: 1"= N/A
VERTICAL: 1"= N/A
MP TO MP
SHEET 6D OF 71
FILE: ECC-FBRBLD01006.AC.LIN

24" x 36" x 24" POLYMER CONCRETE BOX ASSEMBLY



NOTE:
BOX AND COVER ASSEMBLY MEET
ANSI/SCTE 77 TIER 15 LOADING

FILE # AM-574175	 ARMORCAST PRODUCTS COMPANY 13230 Saticoy Street, North Hollywood, CA 91605 (818) 982-3600	PART DESCRIPTION			MAX. LOAD
		24" X 36" X 24" POLYMER CONCRETE BOX ASSEMBLY			TIER 15
		CUSTOMER			DISTRICT NUMBER
		VERIZON			A6001974TAPMC14
DRAWN	DATE	SCALE			
OA	10/17	NONE			
APPROV.	DATE	MATERIAL			
WS	10/17	POLYMER CONCRETE			

THE INFORMATION IN THIS DRAWING IS CONFIDENTIAL. THE DRAWING IS NOT TO BE REPRODUCED OR ITS CONTENTS DISCLOSED IN ANY MANNER WHATSOEVER WITHOUT THE PRIOR WRITTEN APPROVAL OF ARMORCAST PRODUCTS COMPANY. IT IS THE PROPERTY OF AND MUST BE RETURNED TO ARMORCAST PRODUCTS COMPANY, 13230 SATICOY STREET, NORTH HOLLYWOOD, CALIFORNIA 91605.



PROJECT: 1708AOZQ.036
MISSOURI CITY, TX
BH-MISSOURI CITY TO BISSONNET

MCI metro
 ACCESS TRANSMISSION SERVICES
 CORPORATION

OUTSIDE PLANT CONSTRUCTION
 TITLE: FIBER OPTIC ROUTE
 BH-MISSOURI CITY TO BISSONNET
 MISSOURI CITY, TX

DATE: 8/10/18
ENGINEER: L. STALCUP
DRAWN BY: G.F.S. (JCV)

REVISIONS			
No.	DATE	DESCRIPTION	BY

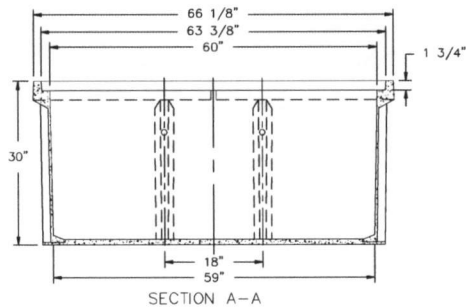
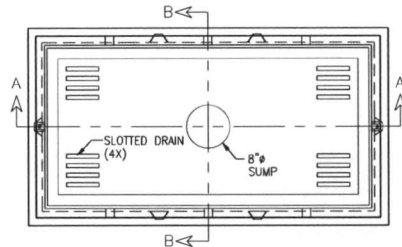
EXCEPT AS MAY BE OTHERWISE PROVIDED BY CONTRACT, THESE DRAWINGS AND SPECIFICATIONS SHALL REMAIN THE PROPERTY OF MCI COMMUNICATIONS SERVICES INC. BOTH BEING ISSUED IN STRICT CONFIDENCE AND SHALL NOT BE REPRODUCED, COPIED, OR USED FOR ANY PURPOSE WITHOUT SPECIFIC WRITTEN PERMISSION.

SCALE
HORIZONTAL: 1"= N/A
VERTICAL: 1"= N/A
MP TO MP
SHEET 07 OF 71
FILE: ECC-FBRBLD01007.AC.LIN

30" x 60" x 30" 30K STANDARD HANDHOLE DETAILS

DETAIL "A"

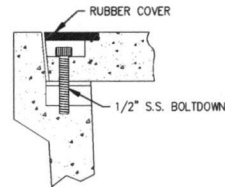
LOCKING DEVICE
CROSS SECTION



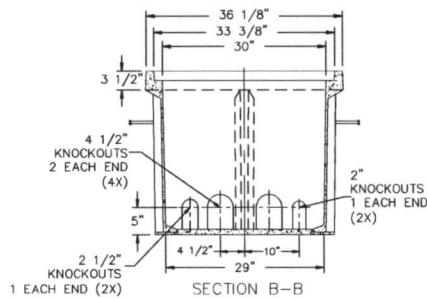
30K
M C I E
800 MCI-WORK
DETAIL A

DETAIL "B"

FLUSH MOUNT
COVER DETAIL



FLUSH MOUNT COVER DETAIL



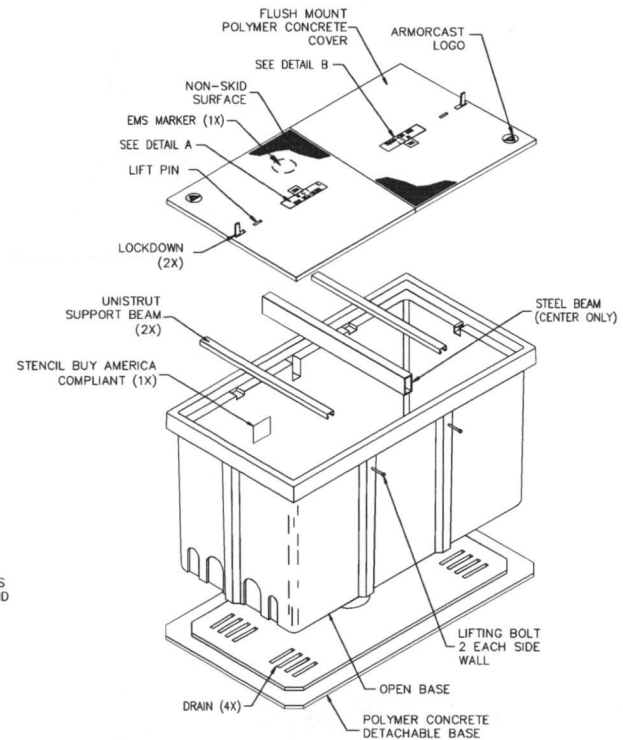
30K
M C I E
800 MCI-WORK
DETAIL B

SEALED PLASTIC BAG PLACED INSIDE VAULT TO CONTAIN

ITEM	QTY	
1	(1)	JOHNNY LOCK KEY
2	(2)	S.S. JOHNNY BOLTS W/FLAT WASHER.
3		SHRINK WRAP COVERS TO FRAME FOR PACKAGING.

DETAIL "C"

EXPLODED ISOMETRIC DETAIL



30K STANDARD HANDHOLE
30"x60"x30" POLYMER CONCRETE FLUSH MOUNT ASSEMBLY
MEETS SCTE/ANSI 77-TIER 22 LOADING CRITERIA
ADDITIONAL REQUIREMENTS:
DESIGNED LOAD: 30,000 LBS
MINIMUM FAILURE LOAD: 45,000 LBS



PROJECT: 1708AOZQ.036

MISSOURI CITY, TX

BH-MISSOURI CITY TO BISSONNET

ACCESS TRANSMISSION SERVICES
CORPORATION

OUTSIDE PLANT CONSTRUCTION

TITLE: FIBER OPTIC ROUTE
BH-MISSOURI CITY TO BISSONNET
MISSOURI CITY, TX

DATE: 8/10/18

ENGINEER: L. STALCUP

DRAWN BY: G.F.S. (JCV)

REVISIONS

No.	DATE	DESCRIPTION	BY

EXCEPT AS MAY BE OTHERWISE PROVIDED BY CONTRACT, THESE DRAWINGS AND SPECIFICATIONS SHALL REMAIN THE PROPERTY OF MCI COMMUNICATIONS SERVICES INC. BOTH BEING REPRODUCED, COPIED, OR USED FOR ANY PURPOSE WITHOUT SPECIFIC WRITTEN PERMISSION.

SCALE

HORIZONTAL: 1"= N/A

VERTICAL: 1"= N/A

MP TO MP

SHEET 07A OF 71

FILE: ECC-FBRBLD01007 AC.LIN

MISSOURI CITY, TX
FORT BEND COUNTY

SEE SHEET 71 TO MATCH SURVEY STA. 318+85

NO ADDRESS AVAILABLE



PROJECT: 1708AQZQ.036

MISSOURI CITY, TX
BH-MISSOURI CITY TO BISONNET

CLARIFICATION NO.	QUANTITY
PLACE 1-6M STRAND	585'
LASH 1-864F CABLE	585'

MCI/metro
ACCESS TRANSMISSION SERVICES
CORPORATION

 OUTSIDE PLANT CONSTRUCTION

 TITLE: FIBER OPTIC ROUTE
BH-MISSOURI CITY TO BISONNET
MISSOURI CITY, TX

DATE: 8/10/18
ENGINEER: L. STALCUP
DRAWN BY: G.F.S. (JCV)

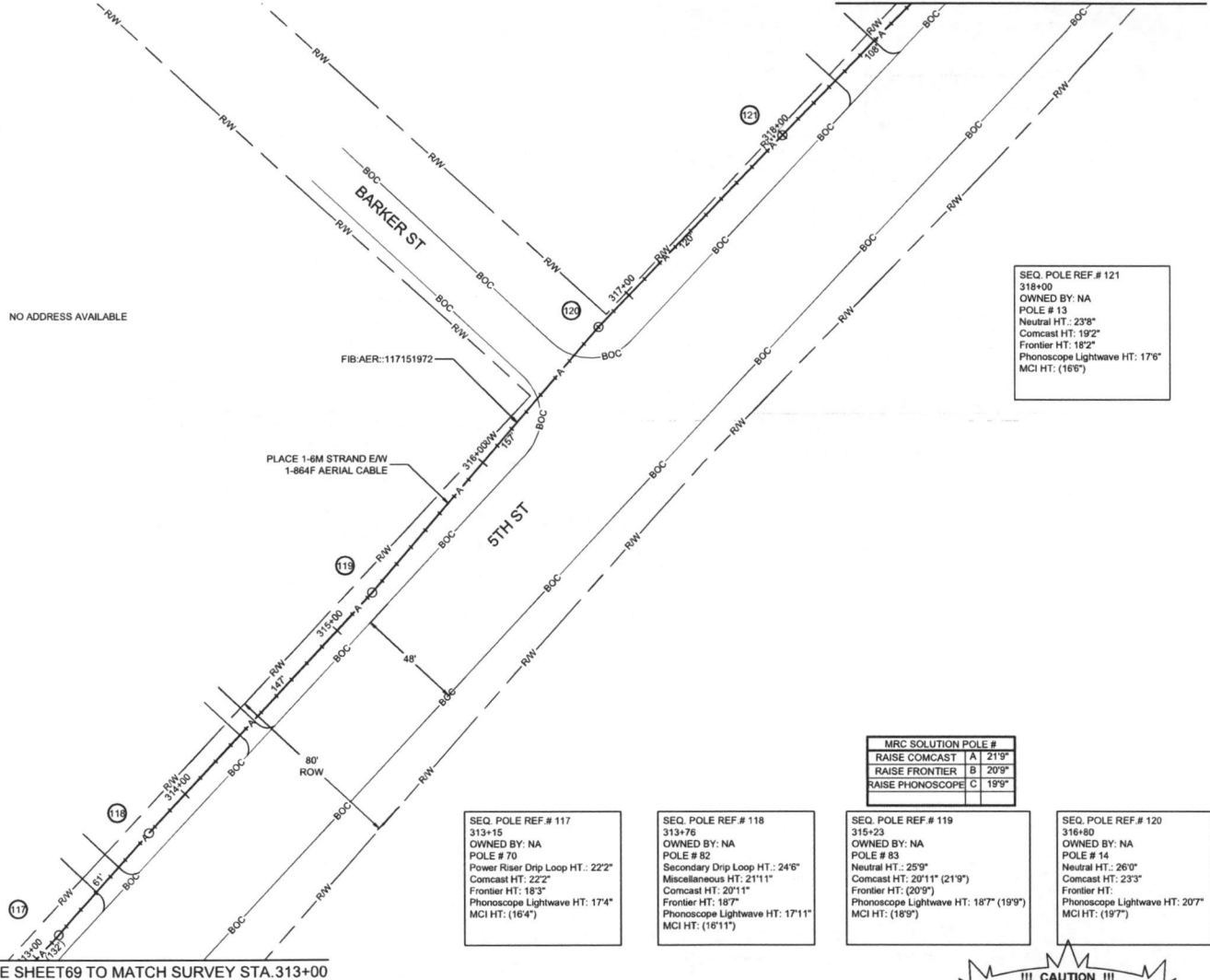
REVISIONS			
No.	DATE	DESCRIPTION	BY

EXCEPT AS MAY BE OTHERWISE PROVIDED BY CONTRACT, THESE DRAWINGS AND SPECIFICATIONS SHALL REMAIN THE PROPERTY OF MCI COMMUNICATIONS SERVICES INC. BOTH BEING ISSUED IN STRICT CONFIDENCE AND SHALL NOT BE REPRODUCED, COPIED, OR USED FOR ANY PURPOSE WITHOUT SPECIFIC WRITTEN PERMISSION.

SCALE	
HORIZONTAL:	1" = 50'
VERTICAL:	1" = N/A
MP	TO MP
SHEET 70	OF 71
FILE: ECC-FBRLD01070.AC.LIN	



CALL BEFORE YOU DIG
1-800-545-6005
48 HOURS NOTICE REQUIRED



SEQ. POLE REF # 121
318+00
OWNED BY: NA
POLE # 13
Neutral HT.: 23'8"
Comcast HT.: 19'2"
Frontier HT.: 19'2"
Phonoscope Lightwave HT.: 17'6"
MCI HT.: (16'6")

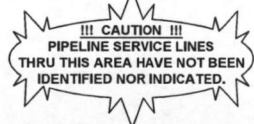
MRC SOLUTION POLE #	
RAISE COMCAST	A 21'9"
RAISE FRONTIER	B 20'9"
RAISE PHONOSCOPE	C 19'9"

SEQ. POLE REF # 117
313+15
OWNED BY: NA
POLE # 70
Power Riser Drip Loop HT.: 22'2"
Comcast HT.: 22'2"
Frontier HT.: 18'3"
Phonoscope Lightwave HT.: 17'4"
MCI HT.: (16'4")

SEQ. POLE REF # 118
313+76
OWNED BY: NA
POLE # 82
Secondary Drip Loop HT.: 24'6"
Miscellaneous HT.: 21'11"
Comcast HT.: 20'11"
Frontier HT.: 18'7"
Phonoscope Lightwave HT.: 17'11"
MCI HT.: (16'11")

SEQ. POLE REF # 119
315+23
OWNED BY: NA
POLE # 83
Neutral HT.: 25'9"
Comcast HT.: 20'11" (21'9")
Frontier HT.: (20'9")
Phonoscope Lightwave HT.: 18'7" (19'9")
MCI HT.: (18'9")

SEQ. POLE REF # 120
316+80
OWNED BY: NA
POLE # 14
Neutral HT.: 26'0"
Comcast HT.: 23'3"
Frontier HT.:
Phonoscope Lightwave HT.: 20'7"
MCI HT.: (18'7")



UNDERGROUND UTILITIES HAVE BEEN PLOTTED FROM AVAILABLE RECORDS AND FIELD OBSERVATIONS BUT ARE NOT NECESSARILY EXACT. IT IS THE CONTRACTORS RESPONSIBILITY TO FIELD LOCATE ALL UNDERGROUND OBSTRUCTIONS AND UTILITIES PRIOR TO CONSTRUCTION. COMPLETE REPAIR OF ANY AND ALL DAMAGES INCURRED SHALL BE AT THE EXPENSE OF THE CONTRACTOR.

RIGHT OF WAY LINES WERE ESTABLISHED BY RESEARCH OF PUBLIC INFORMATION. NO BOUNDARY SURVEY OR PROPERTY LINE SURVEY WAS ESTABLISHED BY GOLDEN FIELD SERVICES, INC.. RIGHT OF WAY BOUNDARY MUST BE FIELD VERIFIED BY A REGISTERED PROFESSIONAL LAND SURVEYOR TO ACCURATELY VERIFY RIGHT OF WAY AND PROPERTY LINES PRIOR TO CONSTRUCTION.

SEE SHEET 69 TO MATCH SURVEY STA. 313+00

MISSOURI CITY, TX
FORT BEND COUNTY



PROJECT: 1708AOZQ.036

MISSOURI CITY, TX
BH-MISSOURI CITY TO BISSONNET

SEQ. POLE REF.# 122
319+08
OWNED BY: NA
POLE # 12
Street Light HT.: 24'1"
Comcast HT: 19'1" (20'7")
Frontier HT: 18'6" (19'7")
Phonoscope Lightwave HT: 17'8" (18'7")
MCI HT: (17'7")

SEQ. POLE REF.# 123
319+56
OWNED BY: NA
POLE # 11
Neutral HT.: 24'6"
Comcast HT: 19'0" (20'6")
Frontier HT: 18'0" (19'6")
Phonoscope Lightwave HT: 17'0" (18'6")
MCI HT: 17'6"

SEQ. POLE REF.# 124
320+73
OWNED BY: NA
POLE # 10
Street Light Drip Loop HT.: 22'6"
Comcast HT: 20'0"
Frontier HT: 18'6"
Phonoscope Lightwave HT: 17'6"
MCI HT: (16'6")

MRC SOLUTION POLE #		
RAISE COMCAST	A	20'7"
RAISE FRONTIER	B	19'7"
RAISE PHONOSCOPE	C	18'7"

MRC SOLUTION POLE #		
RAISE COMCAST	A	20'6"
RAISE FRONTIER	B	19'6"
RAISE PHONOSCOPE	C	18'6"

CLARIFICATION NO.	QUANTITY
PLACE HANDHOLE	3
PROP. 1-2" HDPE	251'
PULL 1-864F CABLE	751'
PLACE 6M STRAND	213'
LASH 1-864F CABLE	186'
DOWN GUY & ANCHOR	1
RISER: 2" U GUARD	1
PLACE MARKER	3

MCI info
ACCESS TRANSMISSION SERVICES
CORPORATION
OUTSIDE PLANT CONSTRUCTION
TITLE: FIBER OPTIC ROUTE
BH-MISSOURI CITY TO BISSONNET
MISSOURI CITY, TX

DATE: 8/10/18

ENGINEER: L. STALCUP

DRAWN BY: G.F.S. (JCV)

REVISIONS

No.	DATE	DESCRIPTION	BY

EXCEPT AS MAY BE OTHERWISE PROVIDED BY CONTRACT THESE DRAWINGS AND SPECIFICATIONS SHALL REMAIN THE PROPERTY OF MCI COMMUNICATIONS SERVICES INC. NO REPRODUCTION, COPIED, OR USED FOR ANY PURPOSE WITHOUT SPECIFIC WRITTEN PERMISSION

SCALE

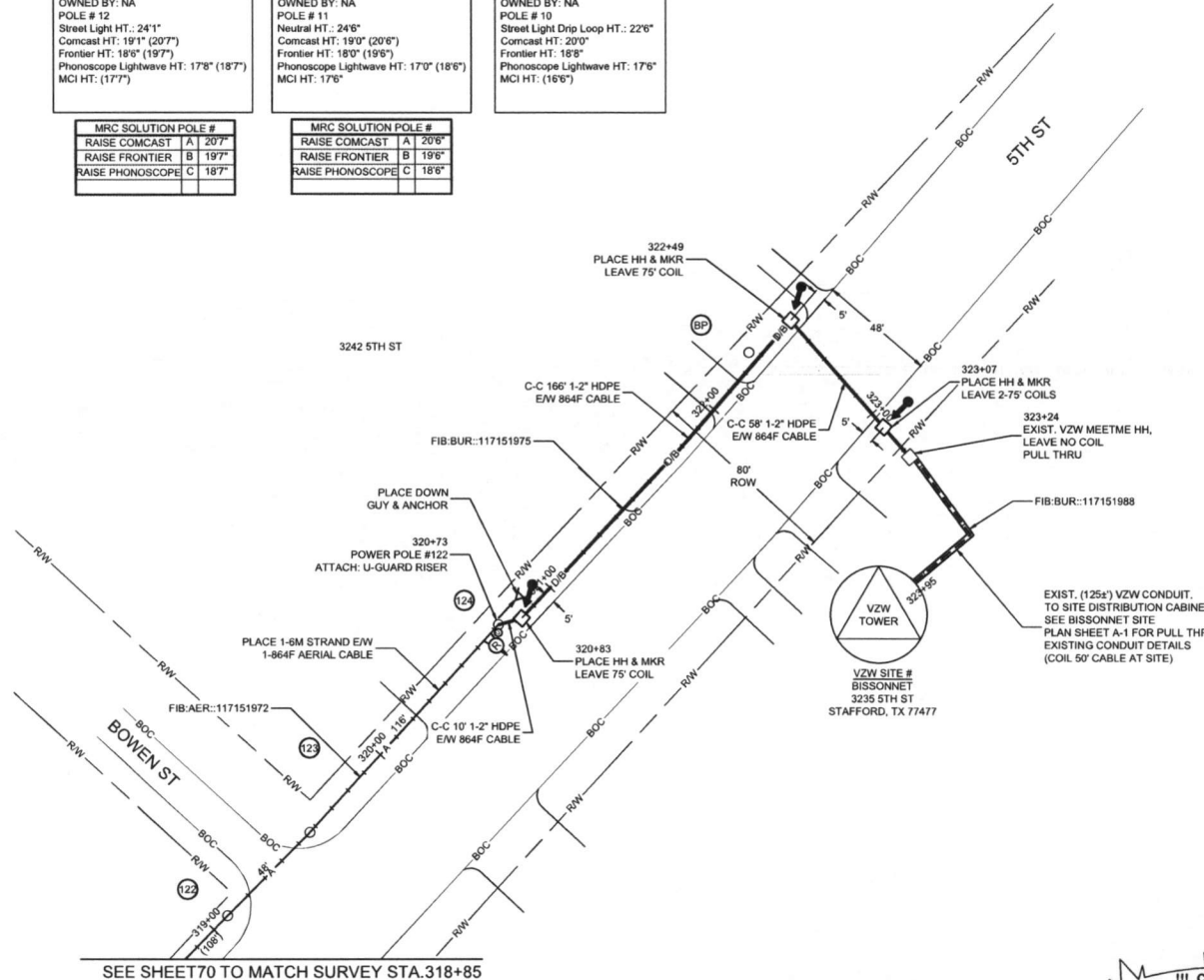
HORIZONTAL: 1"= 50'

VERTICAL: 1"= N/A

MP TO MP

SHEET 71 OF 71

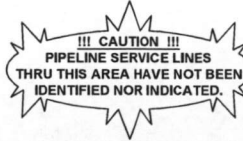
FILE: ECC-FBRBLD1071.AC.LIN



SEE SHEET 70 TO MATCH SURVEY STA. 318+85

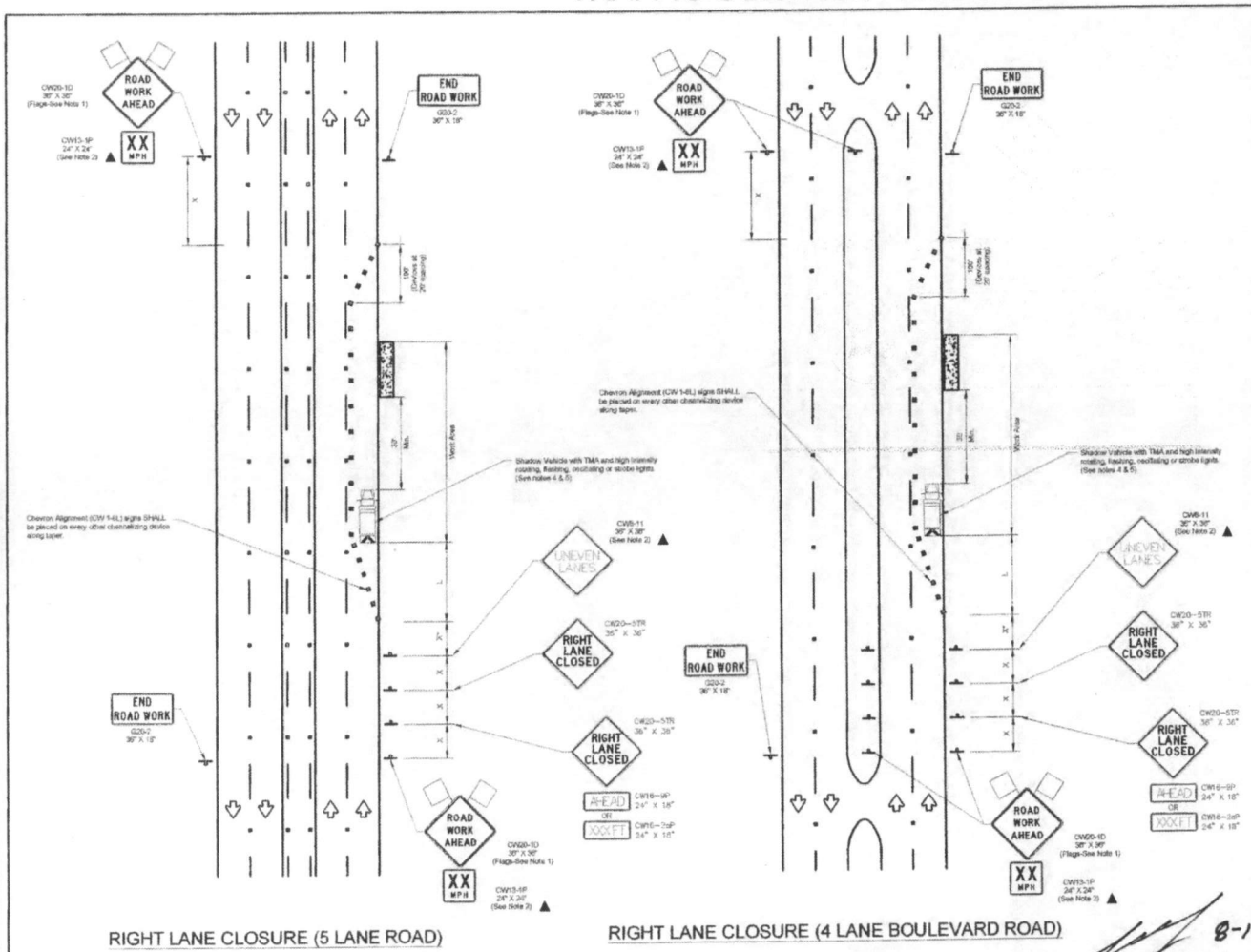
UNDERGROUND UTILITIES HAVE BEEN PLOTTED FROM AVAILABLE RECORDS AND FIELD OBSERVATIONS BUT ARE NOT NECESSARILY EXACT. IT IS THE CONTRACTORS RESPONSIBILITY TO FIELD LOCATE ALL UNDERGROUND OBSTRUCTIONS AND UTILITIES PRIOR TO CONSTRUCTION. COMPLETE REPAIR OF ANY AND ALL DAMAGES INCURRED SHALL BE AT THE EXPENSE OF THE CONTRACTOR.

RIGHT OF WAY LINES WERE ESTABLISHED BY RESEARCH OF PUBLIC INFORMATION. NO BOUNDARY SURVEY OR PROPERTY LINE SURVEY WAS ESTABLISHED BY GOLDEN FIELD SERVICES, INC. RIGHT OF WAY BOUNDARY MUST BE FIELD VERIFIED BY A REGISTERED PROFESSIONAL LAND SURVEYOR TO ACCURATELY VERIFY RIGHT OF WAY AND PROPERTY LINES PRIOR TO CONSTRUCTION.



CALL BEFORE YOU DIG
1-800-545-8005
48 HOURS NOTICE REQUIRED

TRAFFIC CONTROL PLAN DETAILS



TRAFFIC CONTROL PLAN SECTION SHALL BE COMPLETED BY ENGINEER

ROADWAY	POSTED SPEED	TAPER LENGTH	SPACING CHANNELING DEVICES		RIGID SPACING	BUFFER SPACE
			TAPER	TANGENT		
5TH ST	35 MPH	315'	30'	75'	150'	120'
KIRKWOOD RD	40 MPH	320'	40'	80'	240'	155'
OAKES RD	40 MPH	320'	40'	80'	240'	155'
LEAKINSON BLVD	40 MPH	320'	40'	80'	240'	155'
MURPHY RD	50 MPH	600'	50'	100'	400'	240'

LEGEND

	Charterizing Devices
	Truck Mounted Attenuator (TMA)
	Trailer Mounted Flashing Arrow Board
	Flashing Changeable Message Sign (FCMS)
	Sign
	Flag

Vehicle Speed	Formulas	Minimum Distance Taper Length "L"			Suggested Minimum Spacing of Channelizing Devices		Minimum Right Spacing "S"	Suggested Longitudinal Buffer Space "B"
		On a Curve	On a Tangent	On a Tangent	On a Tangent			
30	L = 1.47 * V * S	150'	150'	180'	30'	50'	150'	90'
35		160'	160'	190'	30'	50'	150'	120'
40	L = 1.47 * V * S	180'	180'	210'	30'	50'	150'	150'
45		200'	200'	230'	30'	50'	150'	180'
50	L = 1.47 * V * S	220'	220'	250'	30'	50'	150'	210'
55		240'	240'	270'	30'	50'	150'	240'
60	L = 1.47 * V * S	260'	260'	290'	30'	50'	150'	270'
65		280'	280'	310'	30'	50'	150'	300'
70	L = 1.47 * V * S	300'	300'	330'	30'	50'	150'	330'
75		320'	320'	350'	30'	50'	150'	360'

General Notes:
 1. Flag placement to signs where shown are OPTIONAL.
 2. All traffic control devices listed are REQUIRED, except those denoted with the triangle symbol are OPTIONAL.
 3. Shutter vans/vehicles or other equipment should be parked near the right of way line and not parked on the closed shoulder.
 4. A Shutter Vehicle with a TMA should be used anytime it can be positioned 30 to 100 feet in advance of the area of slow stoppage or other activity affecting the performance or quality of the work. If vehicles are no longer present but road or work conditions require the traffic control to remain in place, Type 3 Barricades or other channelizing devices may be substituted for the Shutter Vehicles and TMA.
 5. Additional Shutter Vehicles with TMA may be positioned off the paved surface, next to those shown in order to protect edge work zones.
 6. Contractor shall provide and install traffic control devices in compliance with part VI of Texas Manual on Uniform Traffic Control Devices (TMUCD). Latest edition with revisions during construction.
 7. No lanes shall be blocked from Turn to Turn and signs to 0300hrs Monday thru Friday.
 8. On duty police officers/rangers are required to direct traffic when applicable.
 9. If project is within 600 feet from a signalized intersection, the Contractor shall contact FORT BEND COUNTY Engineering Department, Traffic Signal Maintenance at (713) 661-3212 five (5) days prior to the start of construction.

NO.	REVISIONS	DATE	NAME
1	UPDATED DEPARTMENT NAME & GENERAL NOTES	4/16/15	BBH

FORT BEND COUNTY
ENGINEERING DEPARTMENT

TEO, LLC
5515 COMBERRY DRIVE
HOUSTON, TEXAS
77055
281-586-0153 OFFICE
713-668-5334 FAX
teo@digital.com
FRM # F-0078



PROJECT: 1708AOZQ.036 BH-MISSOURI CITY TO BISONNET	DATE: 8/10/18		
DRAWN BY: L. STALCUP	ENGINEER: L. STALCUP		
CHECKED BY: G.F.S. (JCV)	DRAWN BY: G.F.S. (JCV)		
REVISIONS			
NO.	DATE	DESCRIPTION	BY

verizonbusiness

PROJECT: 1708AOZQ.036
 MISSOURI CITY, TX
 BH-MISSOURI CITY TO BISONNET

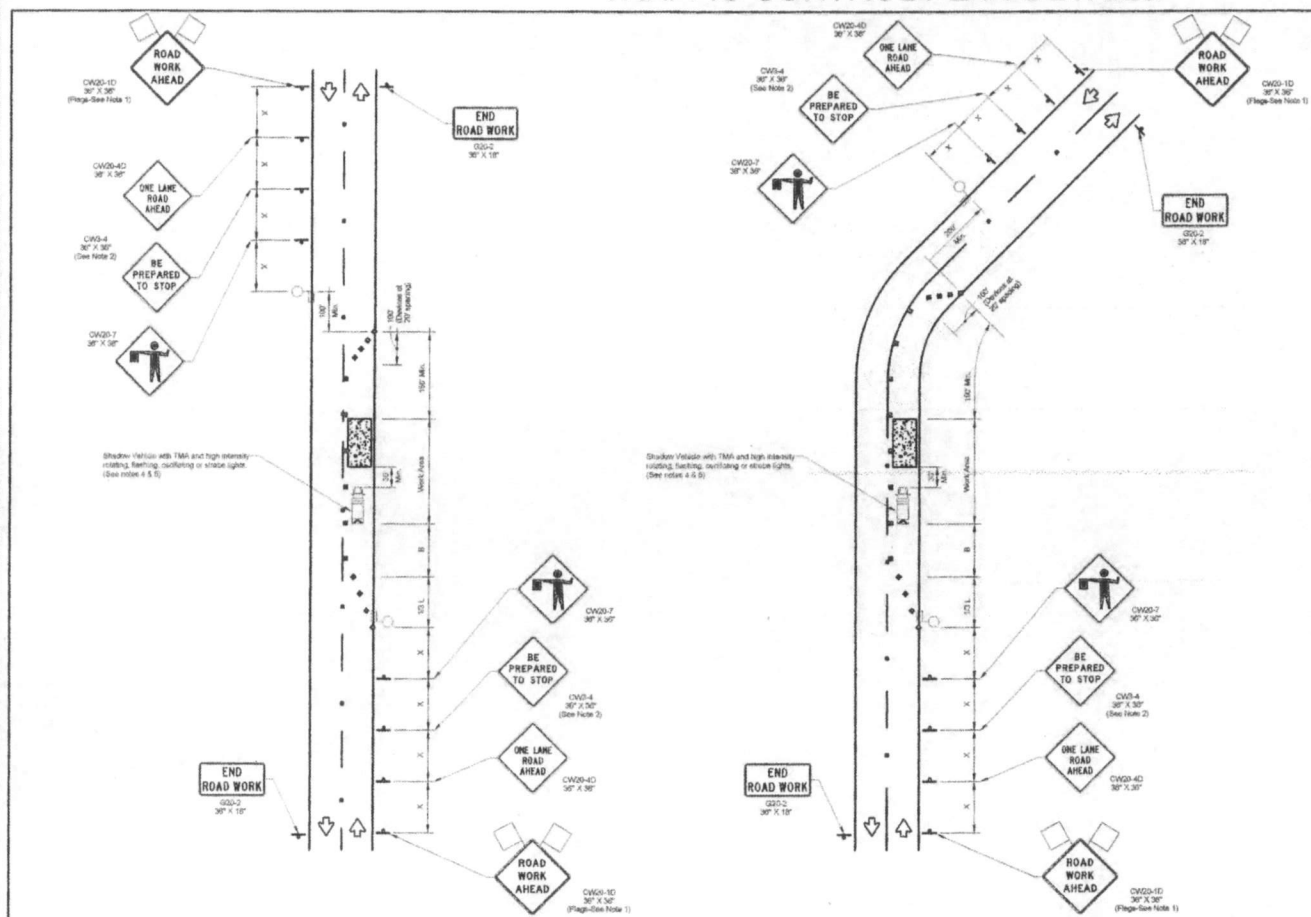
MCI metro
 ACCESS TRANSMISSION SERVICES CORPORATION
 OUTSIDE PLANT CONSTRUCTION
 TITLE: FIBER OPTIC ROUTE
 BH-MISSOURI CITY TO BISONNET
 MISSOURI CITY, TX

DATE: 8/10/18
 ENGINEER: L. STALCUP
 DRAWN BY: G.F.S. (JCV)

SCALE
 HORIZONTAL: 1" = N/A
 VERTICAL: 1" = N/A

MP TO MP
 SHEET #8 OF 71
 FILE: ECC-FBR8L001008CC.LIN

TRAFFIC CONTROL PLAN DETAILS



TRAFFIC CONTROL PLAN SECTION SHALL BE COMPLETED BY ENGINEER

ROADWAY	POSTED SPEED	TAPER LENGTH	SPACING CHANNELIZING DEVICES	SIGN SPACING	BUFFER SPACE
STH ST	35 MPH	240'	30'	70'	150'
129WOOD RD	40 MPH	320'	40'	80'	150'
SOLEY RD	40 MPH	320'	40'	80'	150'
LEWISTON BLVD	40 MPH	320'	40'	80'	150'
MISSOURI RD	40 MPH	320'	40'	80'	150'

Posted Speed	Flares	Minimum Diameter Spacing of Channelizing Devices "L"	Suggested Maximum Spacing of Channelizing Devices "L"	Minimum Sign Spacing "m"	Suggested Longitudinal Buffer Space "B"
30	3	10" Offset	10'	120'	40'
35	3	10" Offset	10'	120'	40'
40	3	10" Offset	10'	120'	40'
45	3	10" Offset	10'	120'	40'
50	3	10" Offset	10'	120'	40'
55	3	10" Offset	10'	120'	40'
60	3	10" Offset	10'	120'	40'
65	3	10" Offset	10'	120'	40'
70	3	10" Offset	10'	120'	40'

- GENERAL NOTES**
1. Signs indicated by asterisks are OPTIONAL.
 2. All traffic control devices illustrated are REQUIRED, except those depicted with the triangle symbol are OPTIONAL.
 3. Inactive work vehicles or other equipment should be parked near the right-of-way line and not parked on the closed roadway.
 4. A Shade Vehicle with a TMA should be used anytime it can be positioned 30 to 150 feet in advance of the work area to provide advance warning of the work. If vehicles are no longer present but work conditions require traffic control to remain in place, Type 3 Barricades or other channelizing devices may be substituted for the Shade Vehicle and TMA.
 5. Additional Shade Vehicles with TMA may be positioned off from project boundaries, next to bus lanes in order to provide wider work space.
 6. Contractor shall provide and install traffic control devices in accordance with part 16 of Texas Manual on Uniform Traffic Control Devices (TMUCD) - Latest edition with revisions during construction.
 7. No lanes shall be blocked from Turn to Turn and Open to Open Monday thru Friday.
 8. Off Road public employees are required to direct traffic where applicable.
 9. If opened in winter 400 feet from a signalized intersection, the Contractor shall contact FORT BEND COUNTY Engineering Department, Traffic Signal Maintenance at (713) 861-3210 by 10:00am prior to the start of construction.

verizonbusiness

PROJECT: 1708AOZQ.036
 MISSOURI CITY, TX
 BH-MISSOURI CITY TO BISONNET

ACCESS TRANSMISSION SERVICES CORPORATION

OUTSIDE PLANT CONSTRUCTION

TITLE: FIBER OPTIC ROUTE
 BH-MISSOURI CITY TO BISONNET
 MISSOURI CITY, TX

DATE: 8/10/18
 ENGINEER: L. STALCUP
 DRAWN BY: G.F.S. (JCV)

REVISIONS

No.	DATE	DESCRIPTION	BY

SCALE
 HORIZONTAL: 1" = N/A
 VERTICAL: 1" = N/A
 MP TO MP
 SHEET BA OF 71

FILE: ECC-FBRBLD01008BC.LIN

NO.	REVISION	DATE	NAME
1	UPDATED DEPARTMENT NAME & GENERAL NOTES	4/18/15	BSH

FORT BEND COUNTY
 ENGINEERING DEPARTMENT



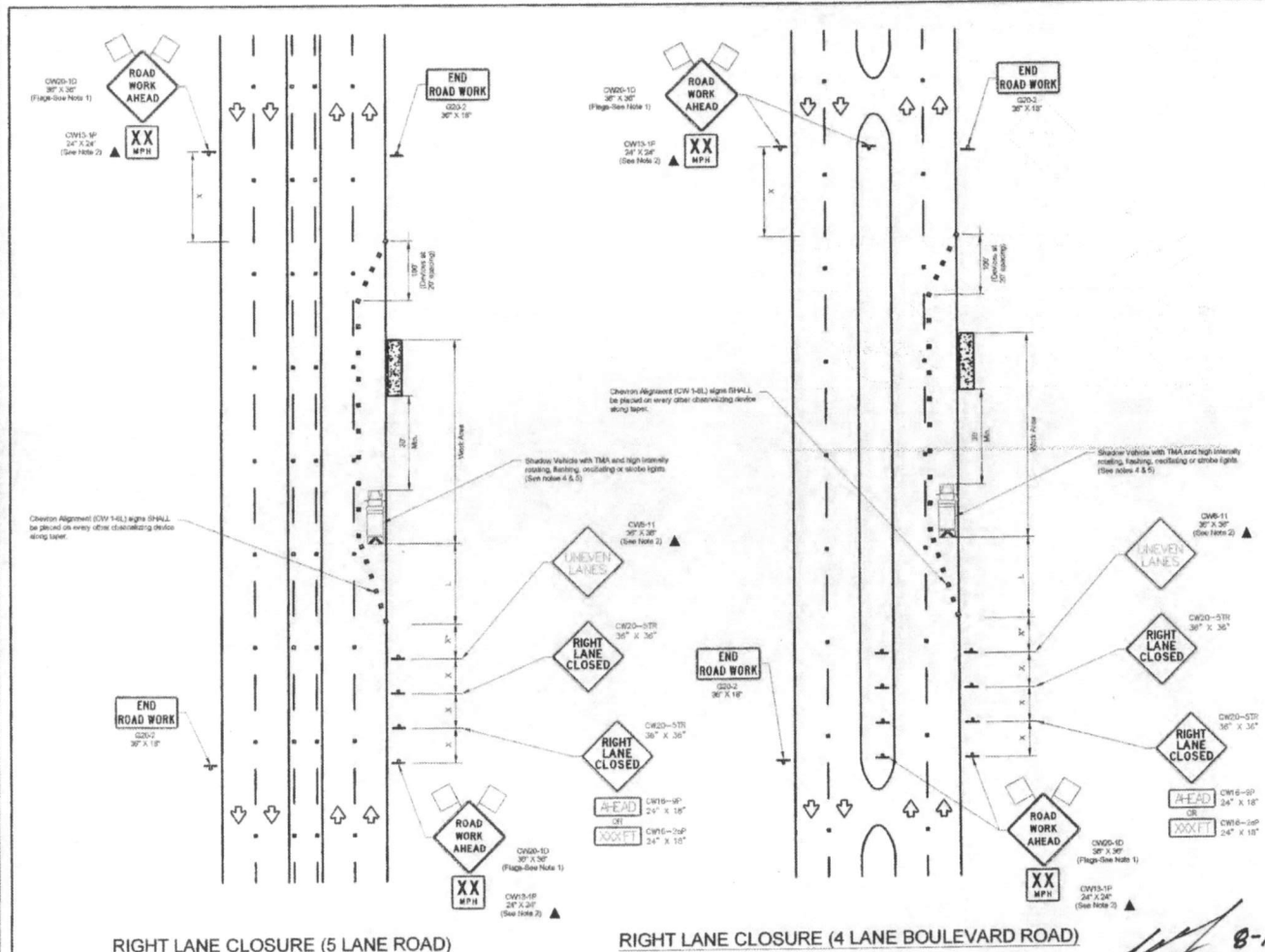
TEO, LLC
 5310 Community Drive
 Houston, Texas
 77025
 281-596-6123 OFFICE
 713-868-8334 FAX
 teo@teo.com
 TBM # F-6878



PROJECT: 1708AOZQ.036 BH-MISSOURI CITY TO BISONNET

DESIGN BY: ERVIN CABLE CONSTRUCTION	HOSE STANDARD: 39
DATE: 8/10/18	CHECK NO: BA / KK

TRAFFIC CONTROL PLAN DETAILS



TRAFFIC CONTROL PLAN SECTION SHALL BE COMPLETED BY ENGINEER

ROADWAY	POSTED SPEED	TAPER LENGTH	BRACING DIMENSIONS		SIGN SPACING	BUFFER SPACE
			TAPER	TANGENT		
STH 81	35 MPH	240	30'	70'	100'	120'
KIRKWOOD RD	40 MPH	320	40'	80'	140'	155'
DALBY RD	40 MPH	320	40'	80'	140'	155'
LEXINGTON BLVD	40 MPH	320	40'	80'	140'	155'
MURPHY RD	50 MPH	600	50'	100'	400'	240'

LEGEND

	Type 3 Barricade		Chevron Device
	Heavy Work Vehicle		Truck Mounted Attenuator (TMA)
	Trailer Mounted Flashing Arrow Board		Flashed Chevron Message Sign (FCMS)
	Sign		Traffic Flow
	Flag		Flagger

Posted Speed	Formula	Minimum Distance Taper Length "L"	Suggested/Maximum Spacing of Chevrone Device	Minimum Sign Spacing "S"	Suggested Longitudinal Buffer Space "B"
30	L = 1.47 * V * T	12'	30'	100'	120'
35		15'	35'	120'	140'
40	L = 1.47 * V * T	18'	40'	140'	160'
45		24'	45'	160'	180'
50	L = 1.47 * V * T	30'	50'	200'	240'
55		36'	55'	240'	280'
60	L = 1.47 * V * T	42'	60'	300'	360'
65		48'	65'	360'	420'
70	L = 1.47 * V * T	60'	70'	420'	480'
75		72'	75'	500'	560'

Conventional Road Only
 ** Taper lengths have been rounded up.
 L=Length of Taper (T) V=Vehicle of Object (V) S=Posted Speed(MPH)

- GENERAL NOTES**
- Flags attached to signs when shown are OPTIONAL.
 - All traffic control devices illustrated are REQUIRED, except those denoted with the triangle symbol are OPTIONAL.
 - In urban work vehicles or other equipment should be parked near the right of way and not parked on the closed shoulder.
 - A Shaker Vehicle with a TMA should be used anytime it can be positioned 30 to 100 feet in advance of the area of other exposure without adversely affecting the performance or quality of the work. If vehicles are no longer present but need or work conditions require the traffic control to remain in place, Type 3 Barricades or other channelizing devices may be substituted for the Shaker Vehicle and TMA.
 - Additional Shaker Vehicles with TMAs may be positioned off the project surface, next to those shown in order to protect other work zones.
 - Contractor shall provide and install traffic control devices in conformance with section 161 of Texas Manual on Uniform Traffic Control Devices (TMUCD) - Latest edition with violations during construction.
 - No signs shall be removed from site to leave signs in place Monday thru Friday.
 - On daily police officers are required to direct traffic when applicable.
 - If project is within 400 feet from a signalized intersection, the Contractor shall contact FORT BEND COUNTY Engineering Department, Traffic Signal Maintenance at (713) 681-3270 five (5) days prior to the start of construction.



PROJECT: 1708AOZQ.036

MISSOURI CITY, TX
 BH-MISSOURI CITY TO BISONNET

MC/metro
 ACCESS TRANSMISSION SERVICES CORPORATION
 OUTSIDE PLANT CONSTRUCTION
 TITLE: FIBER OPTIC ROUTE
 BH-MISSOURI CITY TO BISONNET
 MISSOURI CITY, TX

DATE: 8/10/18
 ENGINEER: L. STALCUP
 DRAWN BY: G.F.S. (JCV)

REVISIONS

No.	DATE	DESCRIPTION	BY

SCALE
 HORIZONTAL: 1"= 1/4" N/A
 VERTICAL: 1"= 1/4" N/A
 MP TO MP
 SHEET 88 OF 71
 FILE: ECC-FRBLD01008CC.LIN

NO.	REVISIONS	DATE	NAME
1	UPDATED DEPARTMENT NAME & GENERAL NOTES	8/10/18	BSH

FORT BEND COUNTY
 ENGINEERING DEPARTMENT



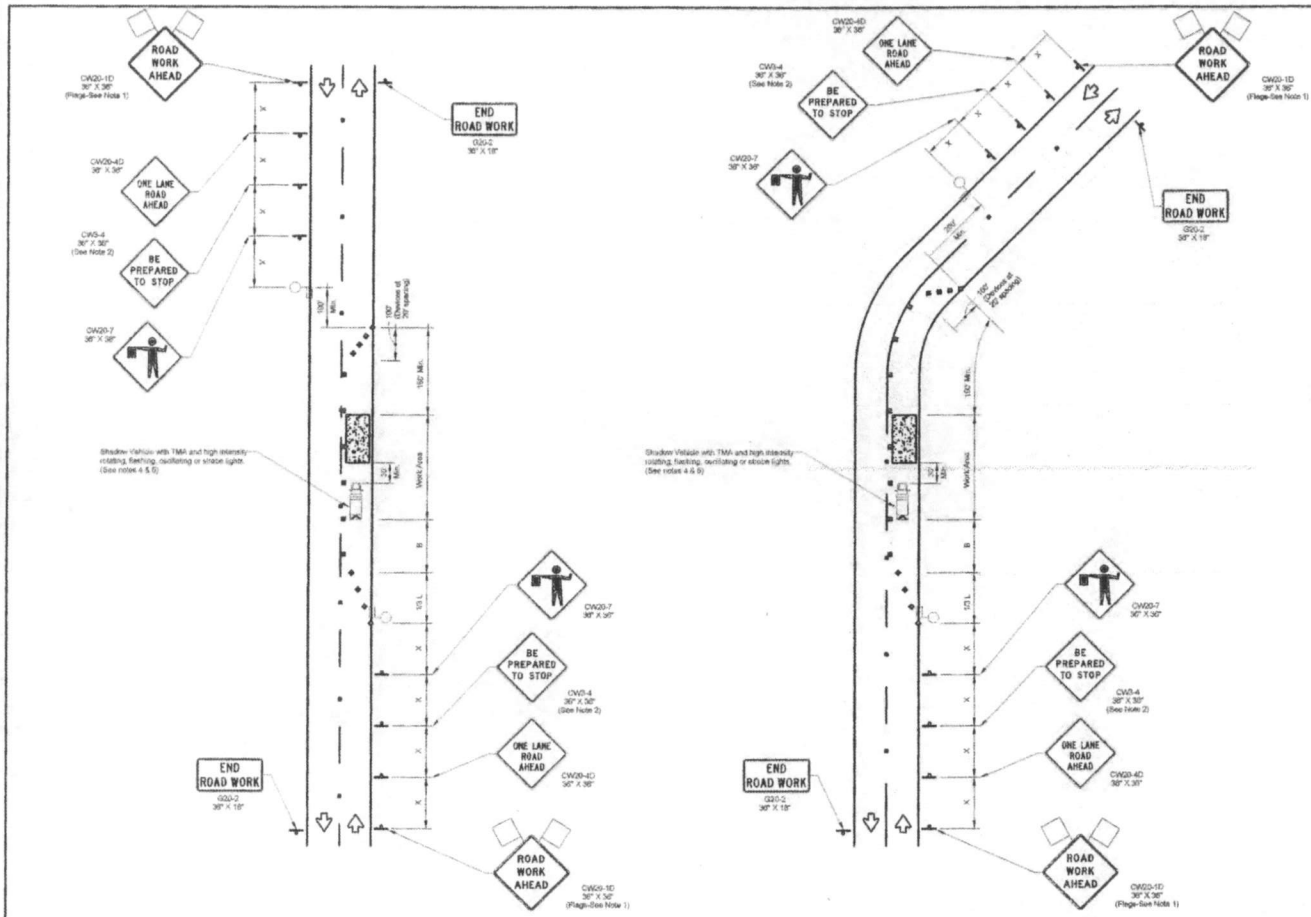
TEO, LLC
 5616 COMMUNITY DRIVE
 HOUSTON, TEXAS
 77055
 281-536-5123 OFFICE
 713-668-6334 FAX
 teo@teo.com
 FPM # F-6078



PROJECT: 1708AOZQ.036 BH-MISSOURI CITY TO BISONNET

CLIENT: FRVIN CABLE CONSTRUCTION	HEET: 88 OF 71
DRAWN BY: G.F.S. & JCV	SCALE: 1"= 1/4" N/A
TITLE: TRAFFIC CONTROL PLAN (RIGHT LANE CLOSURE)	SHEET NO: 88
DATE: 8/10/18	APPROVED BY: RB (XX)

TRAFFIC CONTROL PLAN DETAILS



TRAFFIC CONTROL PLAN SECTION SHALL BE COMPLETED BY ENGINEER

ROADWAY	POSTED SPEED	TAPER LENGTH	SPACING CHANNELIZING DEVICES TAPER	SPACING CHANNELIZING DEVICES TANGENT	W/SR SPACING	BUFFER SPACE
STH ST	35 MPH	240'	30'	70'	150'	120'
STH ST	35 MPH	240'	30'	70'	150'	120'
KIRKWOOD RD	40 MPH	320'	40'	80'	240'	150'
DULES RD	40 MPH	320'	40'	80'	240'	150'
LEXINGTON BLVD	40 MPH	320'	40'	80'	240'	150'
MILBURN RD	50 MPH	600'	60'	120'	400'	240'

Symbol	Description	Symbol	Description
	Type 3 Borocone		Traffic Mounted Channelizing Device (TMA)
	Heavy Duty Vehicle		Portable Changeable Message Sign (PCMS)
	Trailer Mounted Flashing Arrow Board		Traffic Flow
	Sign		Flagger
	Flag		

Posted Speed	Frontage	Minimum Distance Taper Lengths 1'	Suggested Maximum Spacing of Channelizing Devices	Minimum Sign Spacing Distance	Suggested Longitudinal Buffer Space 5'
30	150'	150'	30'	60'	120'
35	200'	200'	30'	70'	120'
40	250'	250'	40'	80'	150'
45	300'	300'	50'	90'	180'
50	350'	350'	60'	100'	210'
55	400'	400'	70'	110'	240'
60	450'	450'	80'	120'	270'
65	500'	500'	90'	130'	300'
70	550'	550'	100'	140'	330'
75	600'	600'	110'	150'	360'

1-4 - Conventional Roadway Only
 5-8 - Taper lengths have been rounded off
 9 - Length of Taper (T) = W/Width of Offset (O) x (S/Posted Speed (MPH))

- GENERAL NOTES**
- Flag attendant to signs when school are OPTIONAL.
 - All traffic control devices illustrated are REQUIRED, except those denoted with the triangle symbol are OPTIONAL.
 - Trucks with trailers or other equipment should be parked near the right-of-way line and not parked on the closed roadway.
 - A shadow vehicle with a TMA should be used anytime it can be positioned 30 to 100 feet in advance of the area of lane closure without adversely affecting the performance or quality of the work. If vehicles are no longer present but need to work conditions require the traffic control to remain in place, Type 3 Borocones or other channelizing devices may be substituted for the shadow vehicle and TMA.
 - Adjustable flagger vehicles with TMA may be positioned off the paved work area, next to the work areas in order to protect the rear work space.
 - Contractor shall provide and install traffic control devices in accordance with part VI of Texas Manual on Uniform Traffic Control Devices (TMUTCD) - latest edition with revisions during construction.
 - No lanes shall be blocked from 7am to 5pm and 6pm to 6:30pm Monday thru Friday.
 - On duty police officers/flaggers are required to direct traffic when applicable.
 - If a signal is within 400 feet from a signalized intersection, the Contractor shall contact FORT BEND COUNTY Engineering Department, Traffic Signal Maintenance at (713) 861-3219 five (5) days prior to the start of construction.

PROJECT: 1708AOZQ.036
 MISSOURI CITY, TX
 BH-MISSOURI CITY TO BISONNET

ACCESS TRANSMISSION SERVICES CORPORATION

OUTSIDE PLANT CONSTRUCTION

TITLE: FIBER OPTIC ROUTE
 BH-MISSOURI CITY TO BISONNET
 MISSOURI CITY, TX

DATE: 8/10/18
 ENGINEER: L. STALCUP
 DRAWN BY: G.F.S. (JCV)

REVISIONS

No.	DATE	DESCRIPTION	BY

ACCEPT AS MAY BE OTHERWISE PROVIDED BY CONTRACT. THESE DIMENSIONS AND SPECIFICATIONS SHALL REMAIN THE PROPERTY OF MFC COMMUNICATIONS SERVICES, INC. BOTH BEFORE AND AFTER CONSTRUCTION AND SHALL NOT BE REPRODUCED, COPIED, OR USED FOR ANY PURPOSES WITHOUT WRITTEN PERMISSION.

SCALE

HORIZONTAL: 1" = 100'
 VERTICAL: 1" = 10'

MP TO MP
 SHEET 8A OF 11

FILE: ECC-FRRLD01008BC.LIN

NO.	REVISION	DATE	NAME
1	UPDATED DEPARTMENT NAME & GENERAL NOTES	4/18/15	BBH

FORT BEND COUNTY
 ENGINEERING DEPARTMENT



TEO, LLC
 5510 Commodity Drive
 Houston, Texas
 77059
 281-596-5233 OFFICE
 713-668-6394 FAX
 teo@teo.com
 7884 - 6-0789



PROJECT: 1708AOZQ.036 BH-MISSOURI CITY TO BISONNET

DATE	BY	SCALE
8/10/18	BA	1" = 100'