



**REVIEW BY FORT BEND COUNTY  
COMMISSIONERS COURT**

**Fort Bend County  
Engineering Department**  
301 Jackson Suite 401  
Richmond, Texas 77469  
281.633.7500  
Permits@fortbendcountytx.gov

- Right of Way Permit  
 Commercial Driveway Permit

Permit No: 2018-22801

**Applicant:** MCI MetroAccess Transmission Services, Corp./Golden Field Services

**Job Location Site:** Court Road, Missouri City, TX 77489

**Bond No.**                      **Date of Bond:** 5/1/2017 **Amount:** \$50,000.00

The above applicant came to make use of certain Fort Bend County property subject to, "The Order Regulating the Laying, Construction, Maintenance, and Repair of Buried Cables, Conduits, and Pole Lines, In, Under, Across or Along Roads, Streets, Highways, and Drainage Ditches in Fort Bend County, Texas, Under the Jurisdiction of the Commissioners Court of Fort Bend County, Texas," as passed by the Commissioners Court of Fort Bend County, Texas, of the Minutes of the Commissioners Court of Fort Bend County, Texas, to the extent that such order is not inconsistent with Chapter 181, Vernon's Texas Statutes and Codes Annotated.

**Notes:**

1. Evidence of review by the Commissioners Court must be kept on the job site and failure to do so constitutes grounds for job shutdown.
2. Written notices are required:
  - a. 48 hours in advance of construction start up, and
  - b. When construction is completed and ready for final inspection, submit notification to Permit Administrator thru MyGovernmentOnline.org portal.
3. This permit expires one (1) year from date of permit if construction has not commenced.

On this 4th day of September, 2018, Upon Motion of Commissioner Meyers, seconded by Commissioner Morales, duly put and carried, it is ORDERED, ADJUDGED AND DECREED that said notice of said above purpose is hereby acknowledged by the Commissioners Court of Fort Bend County, Texas, and that said notice be placed on record according to the regulation order thereof.

**Signature**

Presented to Commissioners Court and approved.

By: Sean Eglinton

County Engineer

Date Recorded 9-7-2018 Comm. Court No. 14B

N/A

By:                     

Drainage District Engineer/Manager

Clerk of Commissioners Court

By: Ronnie Willes

(Deputy)



MCImetro  
ACCESS TRANSMISSION SERVICES CORPORATION

OUTSIDE PLANT CONSTRUCTION  
FIBER OPTIC CABLE ROUTE

ECC FIBER BUILD: 1706AOZQ.035  
MISSOURI CITY TO WESTBURY  
HOUSTON, TX

SITE CODE: HODATX

PROJECT STATUS: CONSTRUCTION

DATE: 08/09/18



# GENERAL NOTES / CLARIFICATION NOTES

## GENERAL NOTES

1. VERIZON BUSINESS COMPRISES THE FOLLOWING OPERATING ENTITIES:
    - MCI COMMUNICATIONS SERVICES, INC.
    - MCI METRO COMMUNICATIONS SERVICES, INC.
    - MCI METRO ACCESS TRANSMISSION SERVICES OF VIRGINIA, INC.
    - MCI METRO ACCESS TRANSMISSION SERVICES OF MASSACHUSETTS, INC.
    - METROPOLITAN FIBER SYSTEMS OF NEW YORK, INC.
2. ALL WORK TO BE PERFORMED IN STRICT ACCORDANCE WITH THE APPLICABLE CODES OR REQUIREMENTS OF ANY REGULATING GOVERNMENTAL AGENCY, VERIZON BUSINESS AND THE RIGHT-OF-WAY GRANTOR.
3. LOCATIONS OF SOME OF THE PHYSICAL FEATURES WERE OBTAINED FROM DATED RAILROAD EVALUATION MAPS OR OTHER DRAWINGS AND MAY NOT BE AS SHOWN OR DEPICTED ON THESE DRAWINGS.
  4. UNDERGROUND UTILITIES HAVE BEEN PLOTTED FROM AVAILABLE RECORDS AND FIELD OBSERVATIONS BUT ARE NOT NECESSARILY EXACT. THEREFORE, UTILITY LOCATIONS WILL BE VERIFIED AT LEAST 100 FEET IN ADVANCE OF TRENCHING OR PLOWING, SO THAT CHANGES IN CABLE PLACEMENT CAN BE MADE IN THE EVENT OF CONFLICT.
  5. ALL KNOWN BURIED OBSTRUCTIONS ARE SHOWN ON THE CONSTRUCTION DRAWINGS. ANY AND ALL OTHERS ENCOUNTERED ARE ALSO THE RESPONSIBILITY OF THE CONTRACTOR TO LOCATE, PROTECT AND REPAIR IF DAMAGED.
  6. ANY AND ALL IMPROVEMENTS, SUCH AS ASPHALT OR CONCRETE PAVEMENT, CURBS, GUTTERS, WALKS, DRAINAGE DITCHES, EMBANKMENTS, SHRUBS, TREES, GRASS SOD, ETC., IF DAMAGED, SHALL BE RESTORED TO ORIGINAL CONDITION.
  7. EQUIPMENT TYPES SPECIFIED HEREIN (IE: "BACKHOE", SWAMP PLOW" ETC.) ARE SUGGESTIONS ONLY AND ARE NOT INTENDED AS REQUIREMENTS. CONTRACTOR WILL BE NOTIFIED AS TO EXPECTATIONS.
  8. SHORING OF BORE PITS AND TRENCHES IN ACCORDANCE WITH OSHA REGULATIONS IS MANDATORY.
  9. BURIED CABLE MARKERS WILL BE PLACED AT ALL UNDERGROUND UTILITY LOCATIONS AND ALL OTHER LOCATIONS IN ACCORDANCE WITH THE CONSTRUCTION DRAWINGS AND THE OUTSIDE PLANT HANDBOOK.
  10. ALL 4" ID CONDUIT WILL BE SCHEDULE 40 (EG.: PVC OR GSP/BSP), OR AS SPECIFIED.
  11. UNDERGROUND CONDUIT WILL BE PLACED AT 48" MINIMUM COVER UNLESS OTHERWISE SPECIFIED ON THE CONSTRUCTION DRAWINGS.

## CLARIFICATION NOTES

- |    |
|----|
| 1. |
| 2. |
| 3. |
| 4. |
| 5. |
| 6. |
| 7. |
1. STATION
  2. LOCATION
  3. CLARIFICATION NO. AND MINIMUM COVER
  4. QUANTITY LINEAR FOOTAGE/SQUARE FOOTAGE, SIZE OF MANHOLE/HANDHOLE SIZE OF PULL/SPLICE BOX, DIMENSION OF WALL, HEIGHT/CLASS/TYPE OF POLE
  5. TYPICAL DRAWING NO. AND TYPICAL DETAIL DRAWING NUMBER
  6. PLANT ACCOUNTING CODE
  7. SPECIFIED CONDUIT, HANDHOLE/MANHOLE NO., SPECIFIED PURPOSE AND MATERIAL, BRIDGE NO. AND RAILROAD STATION, MATERIAL, POLE NO.

## ADDENDUM NOTES

## CLARIFICATION NOTES (CONTINUED)

- |     |     |  |
|-----|-----|--|
| 100 | 110 | JACK AND DRY BORE CONDUIT(S)                 |
| 200 | 210 | PLACE CONDUIT                                |
|     | 212 | PLACE HIGH DENSITY POLYETHYLENE (HDPE)       |
|     | 213 | ROCK ADDER                                   |
|     | 214 | SLURRY BACKFILL ADDER                        |
|     | 215 | EXPOSE CONDUIT                               |
|     | 216 | EXPOSE CONDUIT AND RELOCATE                  |
|     | 217 | EXPOSE CONDUIT AND REPLACE/SUBSTITUTE        |
|     | 218 | EXPOSE AND REMOVE CONDUIT                    |
|     | 219 | EXPOSE AND REMOVE CONDUIT (ABANDONED)        |
|     | 220 | CONCRETE ENCASE                              |
|     | 221 | REMOVE CONCRETE ENCASEMENT                   |
|     | 222 | REMOVE CONCRETE CAP                          |
|     | 240 | PLACE HANDHOLE                               |
|     | 244 | REMOVE EXISTING HANDHOLE                     |
|     | 245 | RELOCATE HANHOLE                             |
|     | 246 | REPLACE/SUBSTITUTE HANDHOLE                  |
|     | 247 | EXCAVATE SPLICE PIT                          |
|     | 250 | PLACE MANHOLE                                |
|     | 252 | REMOVE EXISTING MANHOLE                      |
|     | 255 | RELOCATE PRECAST MANHOLE                     |
|     | 256 | REPLACE/SUBSTITUTE PRECAST MANHOLE           |
|     | 180 | CONSTRUCT WALL                               |
|     | 270 | REMOVE AND RESTORE ASPHALT                   |
|     | 280 | REMOVE AND RESTORE CONCRETE                  |
|     | 281 | REMOVE AND RESTORE SIDEWALK                  |
|     | 282 | REMOVE AND RESTORE CURBING                   |
| 300 | 310 | ATTACH CONDUIT TO WALL OR STRUCTURE          |
|     | 315 | DETACH CONDUIT FROM WALL OR STRUCTURE        |
|     | 320 | CORE BORE                                    |
|     | 330 | ATTACH PULL/SPLICE BOX TO WALL OR STRUCTURE  |
| 400 | 410 | PULL CABLE                                   |
|     | 411 | PULL THROUGH DUCT (INNERDUCT)                |
|     | 415 | REMOVE CABLE FROM CONDUIT                    |
|     | 420 | REPOSITION ACTIVE CABLE SLACK                |
| 500 | 510 | DIRECT BURY CABLE                            |
|     | 515 | EXPOSE DIRECT BURIED CABLE                   |
|     | 516 | EXPOSE DIRECT BURIED CABLE AND RELOCATE      |
|     | 517 | REMOVE AND DISPOSE OF CABLE                  |
|     | 520 | PLACE AERIAL CABLE                           |
|     | 525 | RELOCATE AERIAL CABLE                        |
|     | 518 | DELASH AERIAL CABLE                          |
|     | 527 | RELASH AERIAL CABLE                          |
|     | 528 | REMOVE AERIAL CABLE                          |
|     | 530 | PLACE POLE/PUSH BRACE                        |
|     | 535 | REMOVE POLE/PUSH BRACE                       |
| 600 | 610 | JETTING CONDUIT                              |
|     | 620 | EMBEDMENT PLOW                               |
|     | 630 | DIRECTIONAL BORE                             |
| 700 | 710 | PLACE BURIED CABLE MARKERS AND SIGNS/MWCOM   |
|     |     | WATER CROSSING SIGNS                         |
|     | 711 | PLACE ISOLATOR/PROTECTION SYSTEM AT EXISTING |
|     | 713 | HANDHOLES/MANHOLES                           |
|     | 712 | REMOVE BURIED CABLE MARKER POST/HARDWARE     |
|     | 714 | REMOVE CONCRETE BURIED CABLE MARKER POST     |



PROJECT: 1706AOZQ.035  
HOUSTON, TX  
MISSOURI CITY TO WESTBURY

MCI/metro ACCESS TRANSMISSION SERVICES CORPORATION	OUTSIDE PLANT CONSTRUCTION TITLE: FIBER OPTIC ROUTE MISSOURI CITY TO WESTBURY HOUSTON, TX
--	--

DATE: 08/09/18  
ENGINEER: L. STALCUP  
DRAWN BY: G.F.S. CJW

REVISIONS			
No.	DATE	DESCRIPTION	BY

EXCEPT AS MAY BE OTHERWISE PROVIDED BY CONTRACT, THESE DRAWINGS AND SPECIFICATIONS SHALL REMAIN THE PROPERTY OF MCI COMMUNICATIONS SERVICES INC. BOTH BEING ISSUED IN STRICT CONFIDENCE AND SHALL NOT BE REPRODUCED, COPIED, OR USED FOR ANY PURPOSE WITHOUT SPECIFIC WRITTEN PERMISSION.

SCALE

HORIZONTAL: 1"= N/A  
VERTICAL: 1"= N/A

MP \_\_\_\_\_ TO MP \_\_\_\_\_

SHEET 04 OF 80

FILE: ECC-FBRBLD01004.AC.LIN





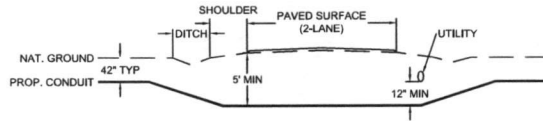




# TYPICAL CROSSING PROFILE DETAILS: UNDERGROUND

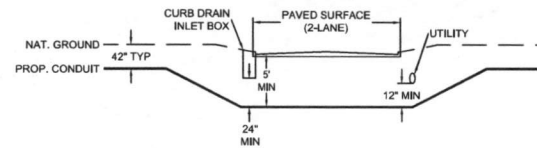
TYPICAL DETAIL "A"

TWO LANE - ASPHALT ROAD - NO CURB



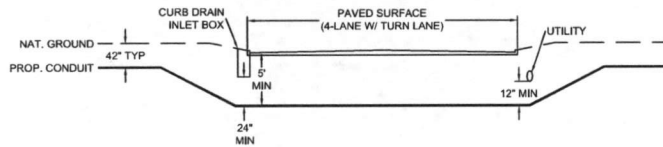
TYPICAL DETAIL "B"

TWO LANE - CURBED ROAD



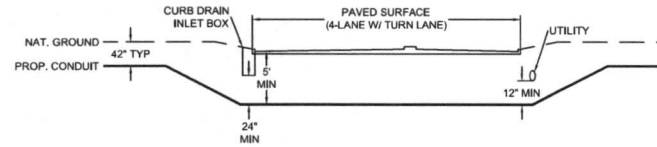
TYPICAL DETAIL "C"

FOUR LANE (W/ TURN LANE) - CURBED ROAD - NO MEDIAN



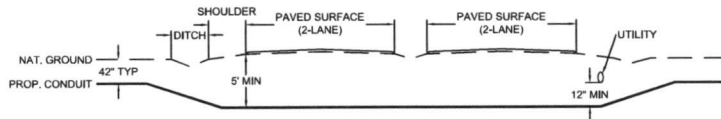
TYPICAL DETAIL "D"

FOUR LANE (W/ TURN LANE) - CURBED ROAD - WITH MEDIAN



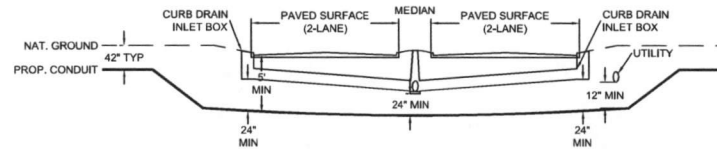
TYPICAL DETAIL "E"

4 LANE - SPLIT ASPHALT ROAD - NO CURB



TYPICAL DETAIL "F"

4 LANE - SPLIT CURBED ROAD



PROJECT: 1706AOZQ.035

HOUSTON, TX

MISSOURI CITY TO WESTBURY

MCI metro  
 ACCESS TRANSMISSION SERVICES  
 CORPORATION

OUTSIDE PLANT CONSTRUCTION  
 TITLE: FIBER OPTIC ROUTE  
 MISSOURI CITY TO WESTBURY  
 HOUSTON, TX

DATE: 08/09/18

ENGINEER: L. STALCUP

DRAWN BY: G.F.S. C.J.W

REVISIONS

No.	DATE	DESCRIPTION	BY

EXCEPT AS MAY BE OTHERWISE PROVIDED BY CONTRACT, THESE DRAWINGS AND SPECIFICATIONS SHALL REMAIN THE PROPERTY OF MCI COMMUNICATIONS SERVICES INC. BOTH BEING ISSUED IN STRICT CONFIDENCE AND SHALL NOT BE REPRODUCED, COPIED, OR USED FOR ANY PURPOSE WITHOUT SPECIFIC WRITTEN PERMISSION.

SCALE

HORIZONTAL: 1"= N/A

VERTICAL: 1"= N/A

MP TO MP

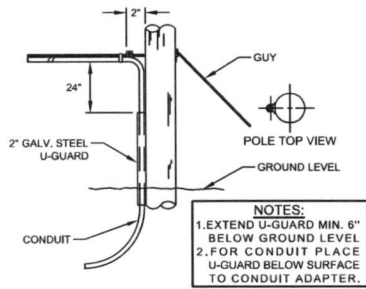
SHEET 8A OF 80

FILE: ECC-FRRBLD01006 BC.LIN

# GENERAL AERIAL CONSTRUCTION DETAILS

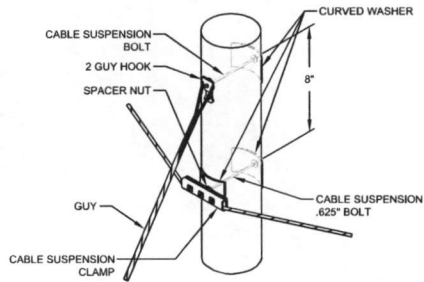
**TYPICAL DETAIL "A"**

POLE ARRANGEMENT FOR AERIAL TO BURIED



**TYPICAL DETAIL "D"**

SUSPENSION STRAND - PULL TOWARD POLE - LESS THAN 5 FEET



**TYPICAL DETAIL "G"**

JOINING 045 LASHING WIRE



FORMING WIRE OVER STUD OF CLAMP

FORMING LASHING WIRE AROUND STRAND

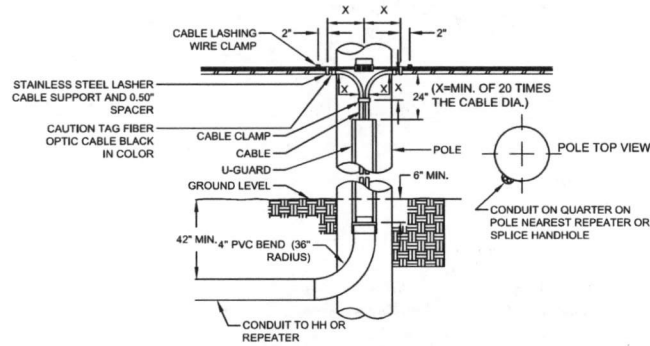
REMOVE ANY SLACK IN THE LASHING WIRE BY MAINTAINING A PULL ON THE WIRE AND TAPPING THE STRAND SHARPLY. THEN FORM THE WIRE OVER THE STUD AND TIGHTEN THE NUT. CUT THE FREE END OF THE LASHING WIRE OFF 0.75" BEYOND THE END OF THE CLAMP.

FORM THE LASHING WIRE AROUND THE STRAND AND PLACE IT BELOW THE STUD AND BETWEEN THE SECOND WASHER AND STUD SHOULDER.

**NOTE:**  
 LASHING WIRE SHOULD FOLLOW LAY OF STRAND WIRES UNDER GRIP.

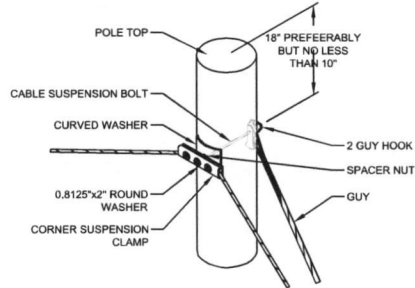
**TYPICAL DETAIL "B"**

POLE ARRANGEMENT FOR REPEATER OR HANDHOLE LOCATION



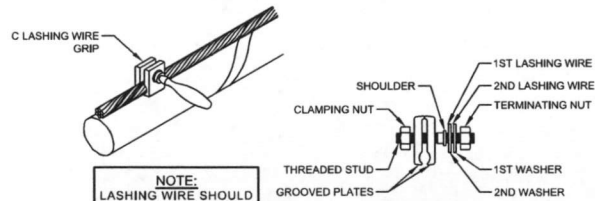
**TYPICAL DETAIL "E"**

SUSPENSION STRAND - PULL AWAY FROM POLE - 5 FEET OR MORE



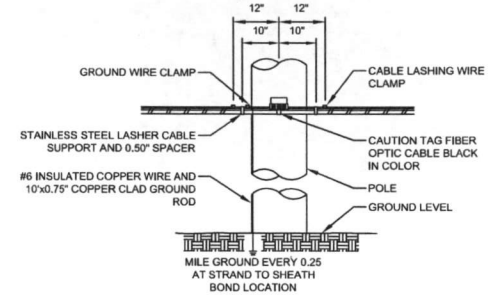
**TYPICAL DETAIL "H"**

LASHING WIRE GRIP AND CLAMP



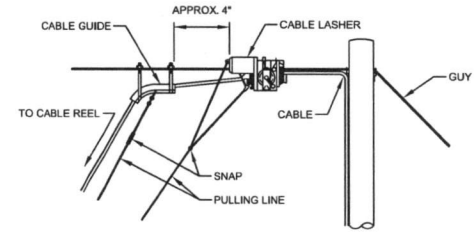
**TYPICAL DETAIL "C"**

TYPICAL CABLE & HARDWARE INSTALLATION



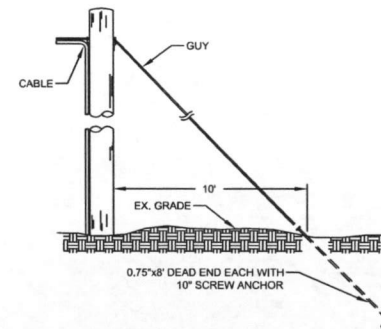
**TYPICAL DETAIL "F"**

TYPICAL ARRANGEMENT OF CABLE LASHER AND CABLE GUIDE



**TYPICAL DETAIL "I"**

ANCHOR & DOWN GUY



PROJECT: 1706AOZQ.035

HOUSTON, TX

MISSOURI CITY TO WESTBURY

DATE: 08/09/18

ENGINEER: L. STALCUP

DRAWN BY: G.F.S. C.J.W

REVISIONS

No.	DATE	DESCRIPTION	BY

SCALE

HORIZONTAL: 1"= N/A

VERTICAL: 1"= N/A

MP TO MP

SHEET 6B OF 80

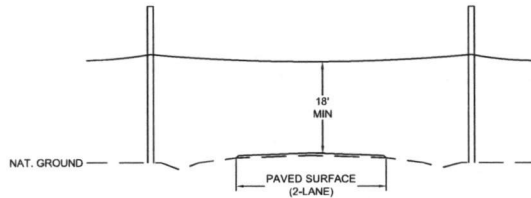
FILE: ECC-FBRBLD01006 BC.LIN



# TYPICAL CROSSING PROFILE DETAILS: AERIAL

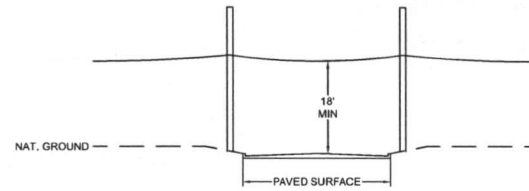
TYPICAL DETAIL "A"

TWO LANE - ASPHALT ROAD - NO CURB



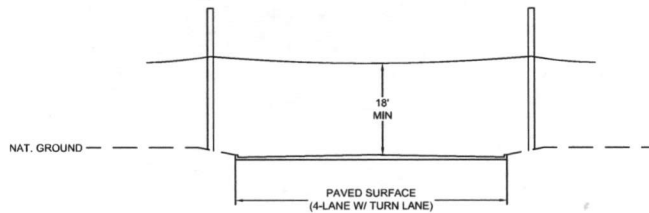
TYPICAL DETAIL "B"

TWO LANE - CURBED ROAD



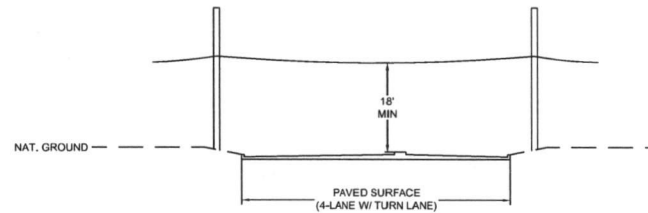
TYPICAL DETAIL "C"

FOUR LANE (W/ TURN LANE) - CURBED ROAD - NO MEDIAN



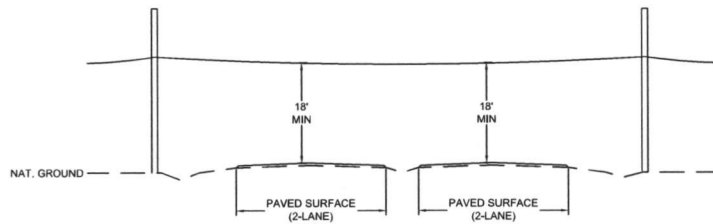
TYPICAL DETAIL "D"

FOUR LANE (W/ TURN LANE) - CURBED ROAD - WITH MEDIAN



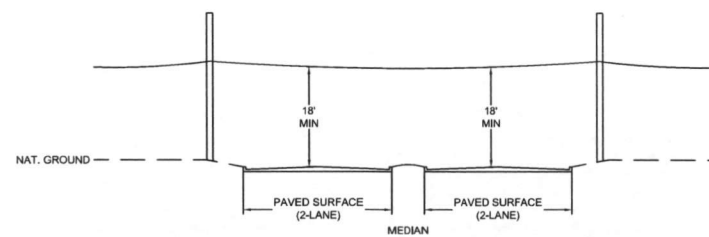
TYPICAL DETAIL "E"

4 LANE - SPLIT ASPHALT ROAD - NO CURB



TYPICAL DETAIL "F"

4 LANE - SPLIT CURBED ROAD



PROJECT: 1706AOZO.035

HOUSTON, TX  
MISSOURI CITY TO WESTBURY

McImetro  
ACCESS TRANSMISSION SERVICES  
CORPORATION  
OUTSIDE PLANT CONSTRUCTION  
TITLE: FIBER OPTIC ROUTE  
MISSOURI CITY TO WESTBURY  
HOUSTON, TX

DATE: 08/09/18

ENGINEER: L. STALCUP

DRAWN BY: G.F.S. CJW

REVISIONS

No.	DATE	DESCRIPTION	BY

EXCEPT AS MAY BE OTHERWISE PROVIDED BY CONTRACT, THESE DRAWINGS AND SPECIFICATIONS SHALL REMAIN THE PROPERTY OF MCI COMMUNICATIONS SERVICES, INC. BOTH BEING ISSUED IN STRICT CONFIDENCE AND SHALL NOT BE REPRODUCED, COPIED, OR USED FOR ANY PURPOSE WITHOUT SPECIFIC WRITTEN PERMISSION.

SCALE

HORIZONTAL: 1"= N/A

VERTICAL: 1"= N/A

MP TO MP

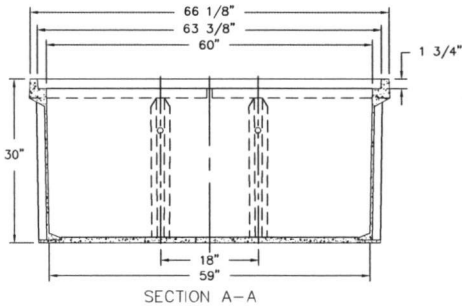
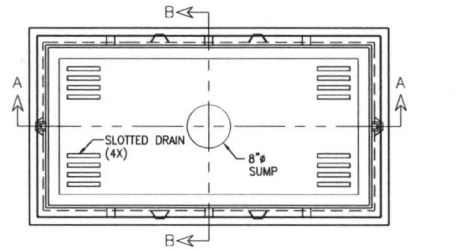
SHEET 6D OF 80

FILE: ECC-FRRBLD01006AC.LIN



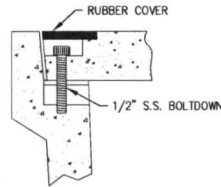
# 30" x 60" x 30" 30K STANDARD HANDHOLE DETAILS

**DETAIL "A"**  
LOCKING DEVICE  
CROSS SECTION

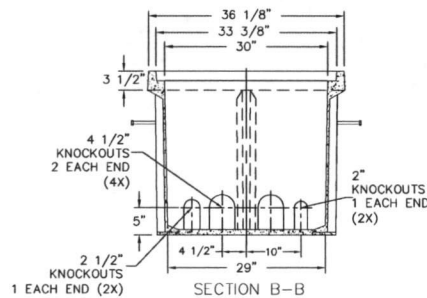


30K  
M C I  
800 MCI-WORK  
DETAIL A

**DETAIL "B"**  
FLUSH MOUNT  
COVER DETAIL



FLUSH MOUNT COVER DETAIL

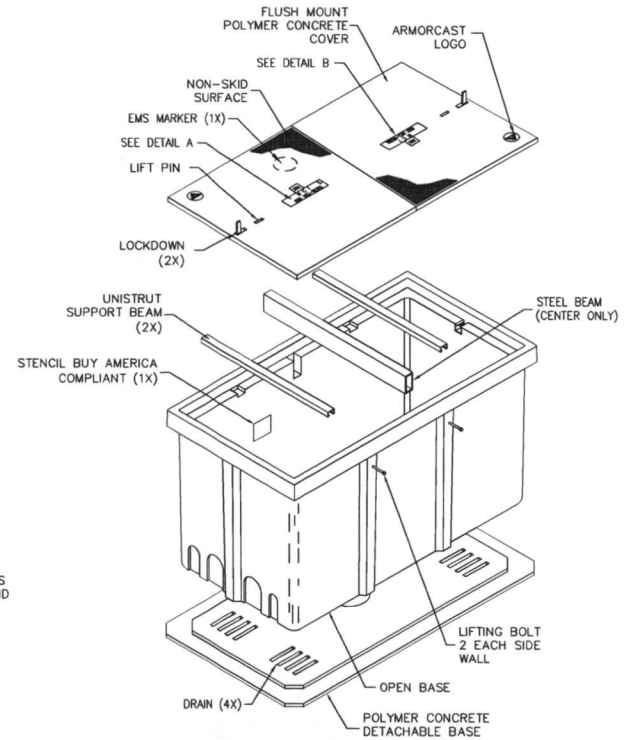


30K  
M C I  
800 MCI-WORK  
DETAIL B

SEALED PLASTIC BAG PLACED INSIDE VAULT TO CONTAIN

- | ITEM | QTY | DESCRIPTION                                |
|------|-----|--|
| 1    | (1) | JOHNNY LOCK KEY                            |
| 2    | (2) | S.S. JOHNNY BOLTS W/FLAT WASHER.           |
| 3    |     | SHRINK WRAP COVERS TO FRAME FOR PACKAGING. |

**DETAIL "C"**  
EXPLODED ISOMETRIC DETAIL



**30K STANDARD HANDHOLE**  
30"x60"x30" POLYMER CONCRETE FLUSH MOUNT ASSEMBLY  
MEETS SCTE/ANSI 77-TIER 22 LOADING CRITERIA  
ADDITIONAL REQUIREMENTS:  
DESIGNED LOAD: 30,000 LBS  
MINIMUM FAILURE LOAD: 45,000 LBS



PROJECT: 1706AOZQ.035

HOUSTON, TX  
MISSOURI CITY TO WESTBURY

MCI metro  
ACCESS TRANSMISSION SERVICES  
CORPORATION  
OUTSIDE PLANT CONSTRUCTION  
TITLE: FIBER OPTIC ROUTE  
MISSOURI CITY TO WESTBURY  
HOUSTON, TX

DATE: 08/09/18

ENGINEER: L. STALCUP

DRAWN BY: G.F.S. CJW

REVISIONS

No.	DATE	DESCRIPTION	BY

EXCEPT AS MAY BE OTHERWISE PROVIDED BY CONTRACT, THESE DRAWINGS AND SPECIFICATIONS SHALL REMAIN THE PROPERTY OF MCI COMMUNICATIONS SERVICES INC. BOTH BEING ISSUED IN STRICT CONFIDENCE AND SHALL NOT BE REPRODUCED, COPIED, OR LISTED FOR ANY PURPOSE WITHOUT SPECIFIC WRITTEN PERMISSION.

SCALE

HORIZONTAL: 1"= N/A

VERTICAL: 1"= N/A

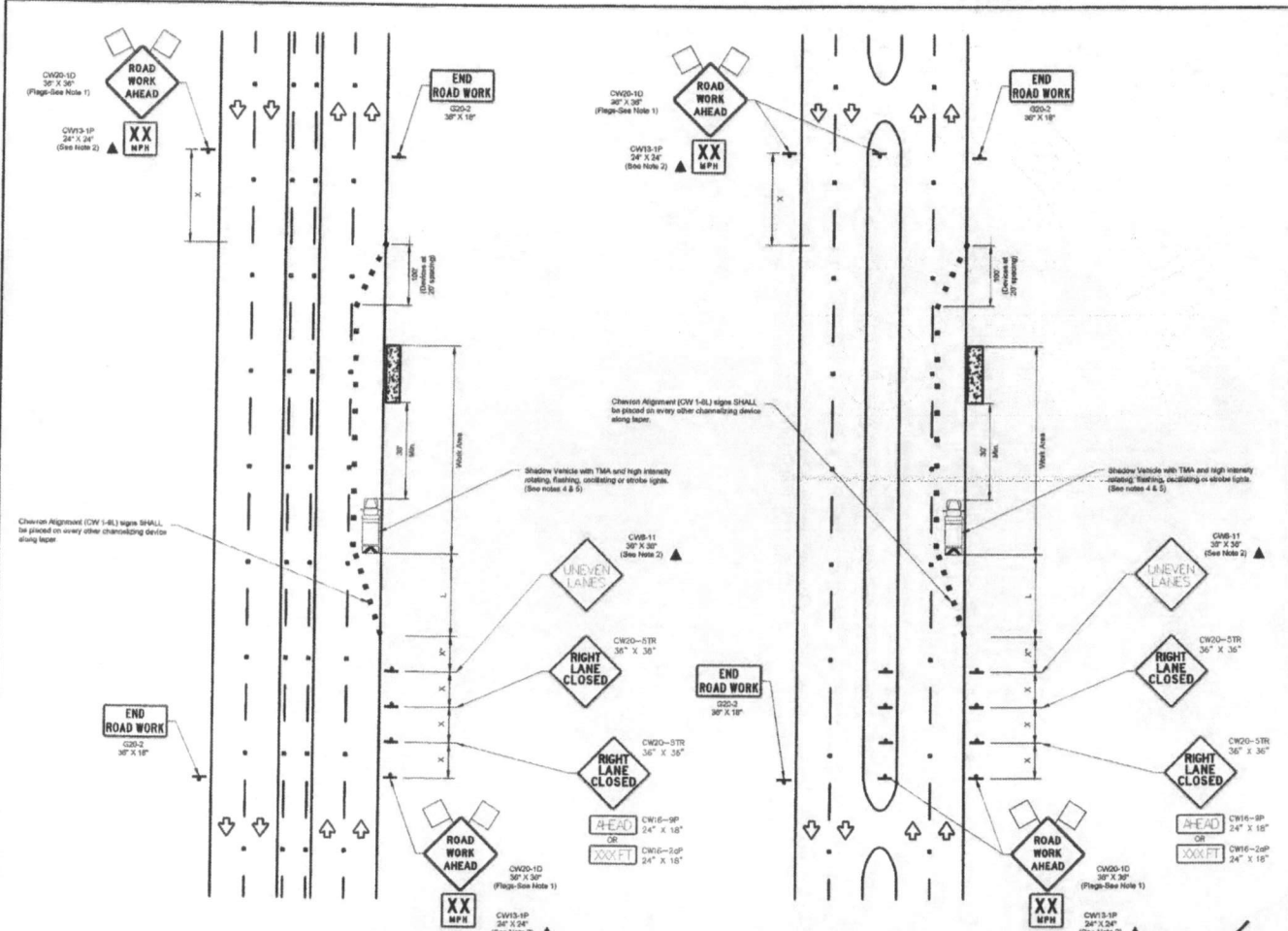
MP TO MP

SHEET 07A OF 80

FILE: ECC-FBRBLD01007.AC.LIN



# TRAFFIC CONTROL PLAN DETAILS



RIGHT LANE CLOSURE (5 LANE ROAD)

RIGHT LANE CLOSURE (4 LANE BOULEVARD ROAD)

TRAFFIC CONTROL PLAN SECTION SHALL BE COMPLETED BY ENGINEER

ROADWAY	POSTED SPEED	TAPER LENGTH	SPACING CHANNELIZING DEVICES TAPER / TRAPEZOID	SIGN SPACING	BUFFER SPACE
FONDREN RD.	40 MPH	327	47	60	150
TEXAS PKWY (FM-2284)	45 MPH	540	47	90	330

**LEGEND**

	Type 3 Barricade		Channelizing Device
	Heavy Work Vehicle		Truck Mounted Attenuator (TMA)
	Trailer Mounted Flashing Arrow Board		Portable Changeable Message Sign (PCMS)
	Sign		Traffic Flow
	Flag		Flag

Posted Speed	Formula	Minimum Concrete Taper Length 'L'	Suggested Maximum Spacing of Channelizing Devices	Minimum Sign Spacing 'S'	Suggested Longitudinal Buffer Space
30	L = 1.47 * S * V	12' Offset	On a Taper	On a Taper	9'
		12' Offset	On a Taper	On a Taper	9'
		On a Taper	On a Taper	On a Taper	9'
35	L = 1.47 * S * V	12' Offset	On a Taper	On a Taper	120'
		12' Offset	On a Taper	On a Taper	120'
		On a Taper	On a Taper	On a Taper	120'
40	L = 1.47 * S * V	12' Offset	On a Taper	On a Taper	150'
		12' Offset	On a Taper	On a Taper	150'
		On a Taper	On a Taper	On a Taper	150'
45	L = 1.47 * S * V	12' Offset	On a Taper	On a Taper	320'
		12' Offset	On a Taper	On a Taper	320'
		On a Taper	On a Taper	On a Taper	320'
50	L = 1.47 * S * V	12' Offset	On a Taper	On a Taper	400'
		12' Offset	On a Taper	On a Taper	400'
		On a Taper	On a Taper	On a Taper	400'
55	L = 1.47 * S * V	12' Offset	On a Taper	On a Taper	500'
		12' Offset	On a Taper	On a Taper	500'
		On a Taper	On a Taper	On a Taper	500'
60	L = 1.47 * S * V	12' Offset	On a Taper	On a Taper	600'
		12' Offset	On a Taper	On a Taper	600'
		On a Taper	On a Taper	On a Taper	600'
70	L = 1.47 * S * V	12' Offset	On a Taper	On a Taper	700'
		12' Offset	On a Taper	On a Taper	700'
		On a Taper	On a Taper	On a Taper	700'
75	L = 1.47 * S * V	12' Offset	On a Taper	On a Taper	800'
		12' Offset	On a Taper	On a Taper	800'
		On a Taper	On a Taper	On a Taper	800'

Conventional Roads Only  
 \* Taper lengths have been rounded off  
 L=Length of Taper(F) W=Width of Offset(F) S=Posted Speed(MPH)

- GENERAL NOTES**
- Flags attached to signs where shown are OPTIONAL.
  - All traffic control devices illustrated are REQUIRED, except those denoted with the triangle symbol are OPTIONAL.
  - Inactive work vehicles with other equipment should be parked near the right-of-way line and not parked on the travel shoulder.
  - A Shadow Vehicle with a TMA should be used anytime it can be positioned 30 to 100 feet in advance of the area of crew exposure without adversely affecting the performance or quality of the work. If workers are to be exposed but not in work conditions require the traffic control to remain in place. Type 3 Barricade or other channelizing devices may be substituted for the Shadow Vehicle and TMA.
  - Additional Shadow Vehicles with TMA may be positioned on the travel section, next to those shown in order to protect wider work spaces.
  - Customer shall provide and install traffic control devices in conformance with part 14 of Texas Manual on Uniform Traffic Control Devices (TMUTCD) - Latest edition with revisions during construction.
  - No lanes shall be blocked from 7am to 5am and open to 6:30pm Monday thru Friday.
  - CR flag poles above/banners are required to direct traffic where applicable.
  - If project is within 400 feet from a signalized intersection, the Contractor shall contact Harris County Engineering Department, Traffic Signal Maintenance at (713) 661-3210 five (5) days prior to the start of construction.



PROJECT: 1706A0ZQ.035  
 HOUSTON, TX  
 MISSOURI CITY TO WESTBURY

McMetro  
 ACCESS TRANSMISSION SERVICES CORPORATION  
 OUTSIDE PLANT CONSTRUCTION  
 TITLE: FIBER OPTIC ROUTE  
 MISSOURI CITY TO WESTBURY  
 HOUSTON, TX

DATE: 08/09/18  
 ENGINEER: L. STALCUP  
 DRAWN BY: G.F.S. C/JW

**REVISIONS**

NO.	DATE	DESCRIPTION	BY

EXCEPT AS MAY BE OTHERWISE PROVIDED BY CONTRACT, THESE DRAWINGS AND SPECIFICATIONS SHALL REMAIN THE PROPERTY OF MCC COMMUNICATIONS SERVICES INC. NO TO BE REPRODUCED, COPIED, OR USED FOR ANY PURPOSE WITHOUT SPECIFIC WRITTEN PERMISSION

**SCALE**

HORIZONTAL: 1"= N/A  
 VERTICAL: 1"= N/A

MP TO MP  
 SHEET 88 OF 80

FILE: ECC-FBRBLD01008C.LIN

NO.	REVISIONS	DATE	NAME
1	UPDATED DEPARTMENT NAME & GENERAL NOTES	4/15/15	BSH

HARRIS COUNTY  
 ENGINEERING DEPARTMENT



TEO, LLC  
 5510 Community DRIVE  
 Houston, Texas  
 77006  
 281-596-5123 OFFICE  
 713-668-0534 FAX  
 teo@teo.com  
 FIRM # F-0978



PROJECT FILE: 1706A0ZQ.035 MISSOURI CITY TO WESTBURY  
 DRAWN BY: G.F.S. ERVIN CABLE CONSTRUCTION  
 CHECKED BY: G.F.S. TRAFFIC CONTROL PLAN (RIGHT LANE CLOSURE)  
 DATE: 08/09/18  
 SHEET NO: 88 / 80



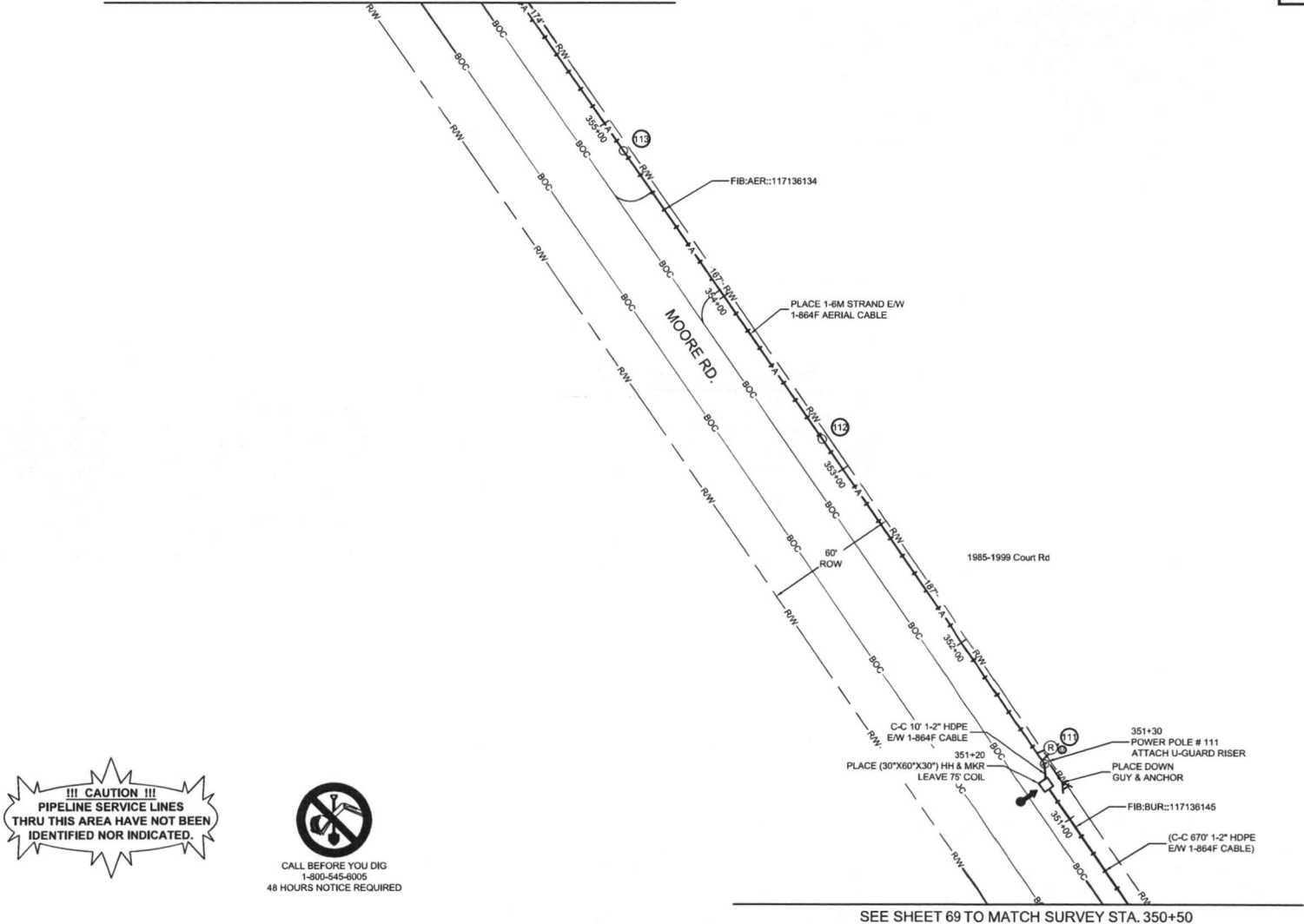
HOUSTON, TX  
HARRIS COUNTY  
SEE SHEET 71 TO MATCH SURVEY STA. 356+80



PROJECT: 1706AOZQ.035

HOUSTON, TX  
MISSOURI CITY TO WESTBURY

CLARIFICATION NO.	QUANTITY
PLACE (30"x60"x30") HH	1
PROP. 1-2" HDPE	80
PULL 1-864F CABLE	180'
PLACE 6M STRAND	575
LASH 1-864F CABLE	550'
DOWN GUY & ANCHOR	1
RISE: 2" U GUARD	1
PLACE MARKER	1



**!!! CAUTION !!!**  
PIPELINE SERVICE LINES  
THRU THIS AREA HAVE NOT BEEN  
IDENTIFIED NOR INDICATED.



CALL BEFORE YOU DIG  
1-800-545-6005  
48 HOURS NOTICE REQUIRED

UNDERGROUND UTILITIES HAVE BEEN PLOTTED FROM AVAILABLE RECORDS AND FIELD OBSERVATIONS BUT ARE NOT NECESSARILY EXACT. IT IS THE CONTRACTORS RESPONSIBILITY TO FIELD LOCATE ALL UNDERGROUND OBSTRUCTIONS AND UTILITIES PRIOR TO CONSTRUCTION. COMPLETE REPAIR OF ANY AND ALL DAMAGES INCURRED SHALL BE AT THE EXPENSE OF THE CONTRACTOR.

RIGHT OF WAY LINES WERE ESTABLISHED BY RESEARCH OF PUBLIC INFORMATION. NO BOUNDARY SURVEY OR PROPERTY LINE SURVEY WAS ESTABLISHED BY GOLDEN FIELD SERVICES, INC. RIGHT OF WAY BOUNDARY MUST BE FIELD VERIFIED BY A REGISTERED PROFESSIONAL LAND SURVEYOR TO ACCURATELY VERIFY RIGHT OF WAY AND PROPERTY LINES PRIOR TO CONSTRUCTION.

MCI metro  
ACCESS TRANSMISSION SERVICES  
CORPORATION  
OUTSIDE PLANT CONSTRUCTION  
TITLE: FIBER OPTIC ROUTE  
MISSOURI CITY TO WESTBURY  
HOUSTON, TX

DATE: 08/09/18  
ENGINEER: L. STALCUP

DRAWN BY: G.F.S. CJW

REVISIONS

No.	DATE	DESCRIPTION	BY

EXCEPT AS MAY BE OTHERWISE PROVIDED BY CONTRACT, THESE DRAWINGS AND SPECIFICATIONS SHALL REMAIN THE PROPERTY OF MCI COMMUNICATIONS SERVICES INC. BOTH BEING ISSUED IN STRICT CONFIDENCE AND SHALL NOT BE REPRODUCED, COPIED, OR USED FOR ANY PURPOSE WITHOUT SPECIFIC WRITTEN PERMISSION.

SCALE

HORIZONTAL: 1"= 50'

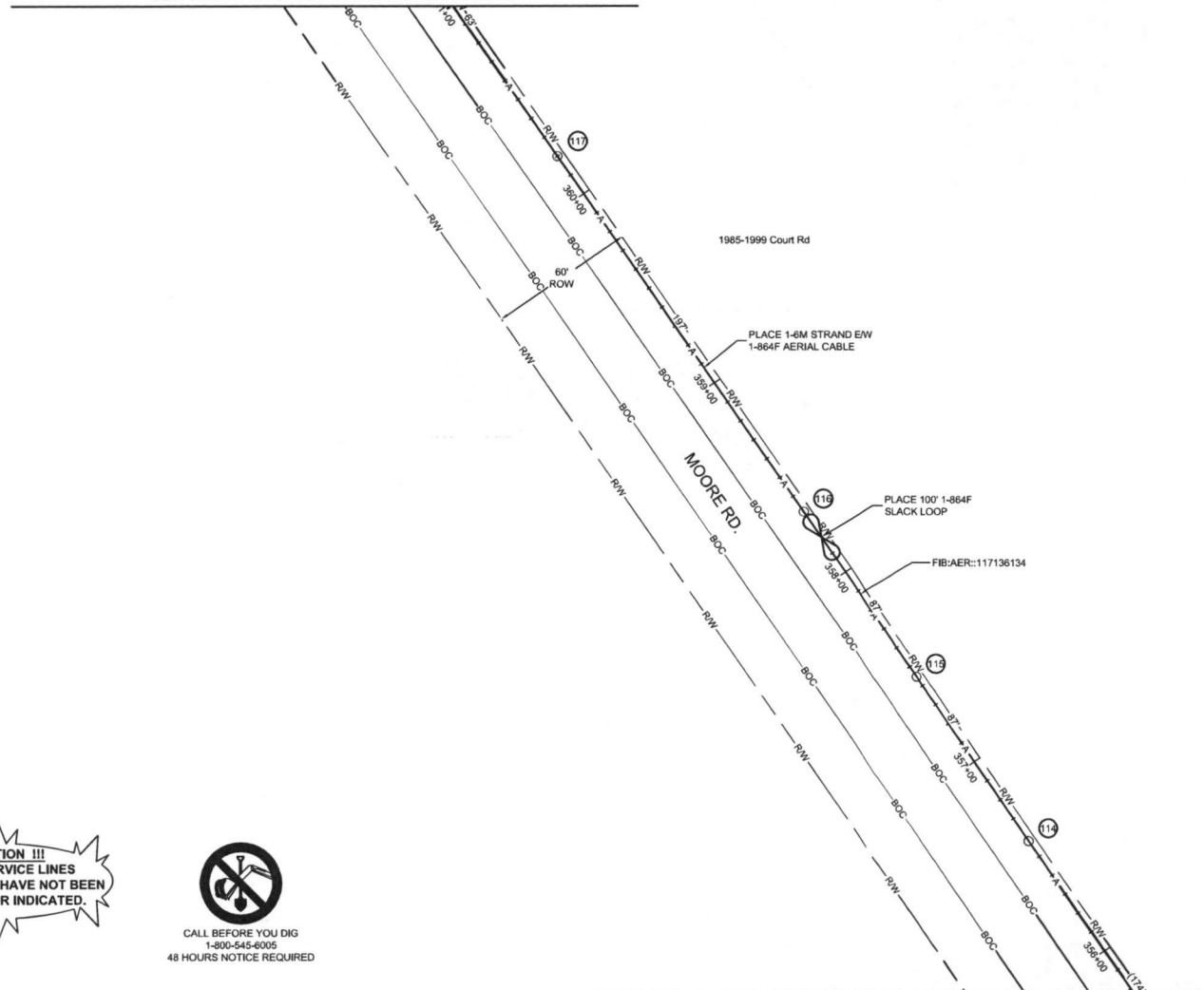
VERTICAL: 1"= N/A

MP \_\_\_\_\_ TO MP \_\_\_\_\_

SHEET 70 OF 80

FILE: ECC-FBRBLD01070AC.LIN

HOUSTON, TX  
HARRIS COUNTY  
SEE SHEET 72 TO MATCH SURVEY STA. 361+00



SEE SHEET 70 TO MATCH SURVEY STA. 356+80

**!!! CAUTION !!!**  
PIPELINE SERVICE LINES  
THRU THIS AREA HAVE NOT BEEN  
IDENTIFIED NOR INDICATED.



CALL BEFORE YOU DIG  
1-800-545-6005  
48 HOURS NOTICE REQUIRED

UNDERGROUND UTILITIES HAVE BEEN PLOTTED FROM AVAILABLE RECORDS AND FIELD OBSERVATIONS BUT ARE NOT NECESSARILY EXACT. IT IS THE CONTRACTORS RESPONSIBILITY TO FIELD LOCATE ALL UNDERGROUND OBSTRUCTIONS AND UTILITIES PRIOR TO CONSTRUCTION. COMPLETE REPAIR OF ANY AND ALL DAMAGES INCURRED SHALL BE AT THE EXPENSE OF THE CONTRACTOR.

RIGHT OF WAY LINES WERE ESTABLISHED BY RESEARCH OF PUBLIC INFORMATION. NO BOUNDARY SURVEY OR PROPERTY LINE SURVEY WAS ESTABLISHED BY GOLDEN FIELD SERVICES, INC. RIGHT OF WAY BOUNDARY MUST BE FIELD VERIFIED BY A REGISTERED PROFESSIONAL LAND SURVEYOR TO ACCURATELY VERIFY RIGHT OF WAY AND PROPERTY LINES PRIOR TO CONSTRUCTION.



PROJECT: 1706AOZQ.035  
HOUSTON, TX  
MISSOURI CITY TO WESTBURY

CLARIFICATION NO.	QUANTITY
PLACE 1-6M STRAND	420'
LASH 1-864F CABLE	520'

McImetro  
ACCESS TRANSMISSION SERVICES  
CORPORATION  
OUTSIDE PLANT CONSTRUCTION  
TITLE: FIBER OPTIC ROUTE  
MISSOURI CITY TO WESTBURY  
HOUSTON, TX

DATE: 08/09/18  
ENGINEER: L. STALCUP  
DRAWN BY: G.F.S. C.J.W.

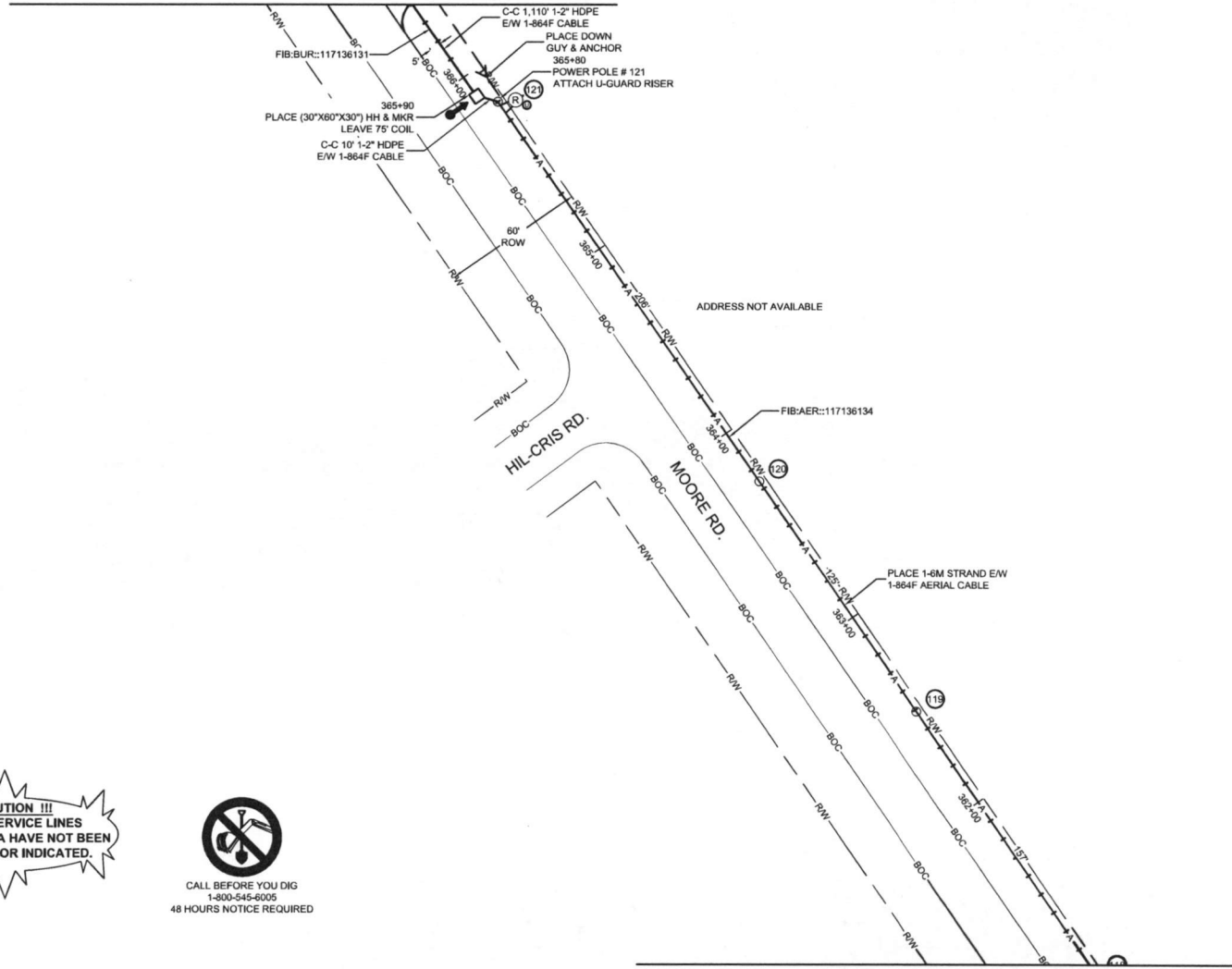
REVISIONS			
No.	DATE	DESCRIPTION	BY

EXCEPT AS MAY BE OTHERWISE PROVIDED BY CONTRACT, THESE DRAWINGS AND SPECIFICATIONS SHALL REMAIN THE PROPERTY OF MCIC COMMUNICATIONS SERVICES INC. BOTH BEING ISSUED IN STRICT CONFIDENCE AND SHALL NOT BE REPRODUCED, COPIED, OR USED FOR ANY PURPOSE WITHOUT SPECIFIC WRITTEN PERMISSION.

SCALE  
HORIZONTAL: 1"= 50'  
VERTICAL: 1"= N/A  
MP TO MP  
SHEET 71 OF 80  
FILE: ECC-FBRBLD01071ACLIN

HOUSTON, TX  
HARRIS COUNTY

SEE SHEET 73 TO MATCH SURVEY STA. 366+40



**!!! CAUTION !!!**  
PIPELINE SERVICE LINES  
THRU THIS AREA HAVE NOT BEEN  
IDENTIFIED NOR INDICATED.



CALL BEFORE YOU DIG  
1-800-545-6005  
48 HOURS NOTICE REQUIRED

UNDERGROUND UTILITIES HAVE BEEN PLOTTED FROM AVAILABLE RECORDS AND FIELD OBSERVATIONS BUT ARE NOT NECESSARILY EXACT. IT IS THE CONTRACTORS RESPONSIBILITY TO FIELD LOCATE ALL UNDERGROUND OBSTRUCTIONS AND UTILITIES PRIOR TO CONSTRUCTION. COMPLETE REPAIR OF ANY AND ALL DAMAGES INCURRED SHALL BE AT THE EXPENSE OF THE CONTRACTOR.

RIGHT OF WAY LINES WERE ESTABLISHED BY RESEARCH OF PUBLIC INFORMATION. NO BOUNDARY SURVEY OR PROPERTY LINE SURVEY WAS ESTABLISHED BY GOLDEN FIELD SERVICES, INC. RIGHT OF WAY BOUNDARY MUST BE FIELD VERIFIED BY A REGISTERED PROFESSIONAL LAND SURVEYOR TO ACCURATELY VERIFY RIGHT OF WAY AND PROPERTY LINES PRIOR TO CONSTRUCTION.

SEE SHEET 71 TO MATCH SURVEY STA. 361+00



PROJECT: 1706AOZQ.035  
HOUSTON, TX  
MISSOURI CITY TO WESTBURY

CLARIFICATION NO.	QUANTITY
PLACE (30'X60'X30') HH	1
PROP. 1-2" HDPE	607
PULL 1-864F CABLE	1600
PLACE 6M STRAND	500
LASH 1-864F CABLE	4807
DOWN GUY & ANCHOR	1
RISER: 2" U GUARD	1
PLACE MARKER	1

MCI/metro  
ACCESS TRANSMISSION SERVICES  
CORPORATION  
OUTSIDE PLANT CONSTRUCTION  
TITLE: FIBER OPTIC ROUTE  
MISSOURI CITY TO WESTBURY  
HOUSTON, TX

DATE: 08/09/18  
ENGINEER: L. STALCUP  
DRAWN BY: G.F.S. C.J.W

REVISIONS

No.	DATE	DESCRIPTION	BY

EXCEPT AS MAY BE OTHERWISE PROVIDED BY CONTRACT, THESE DRAWINGS AND SPECIFICATIONS SHALL REMAIN THE PROPERTY OF MCI COMMUNICATIONS SERVICES INC. BOTH BEING ISSUED IN STRICT CONFIDENCE AND SHALL NOT BE REPRODUCED, COPIED, OR USED FOR ANY PURPOSE WITHOUT SPECIFIC WRITTEN PERMISSION.

SCALE  
HORIZONTAL: 1"= 50'  
VERTICAL: 1"= N/A  
MP TO MP  
SHEET 72 OF 80  
FILE: ECC-FBRBLD01072ACLIN

HOUSTON, TX  
HARRIS COUNTY  
SEE SHEET 74 TO MATCH SURVEY STA. 371+60



PROJECT: 1706AOZQ.035  
HOUSTON, TX  
MISSOURI CITY TO WESTBURY

CLARIFICATION NO.	QUANTITY
PROP. 1-2" HDPE	520'
PULL 1-864F CABLE	520'

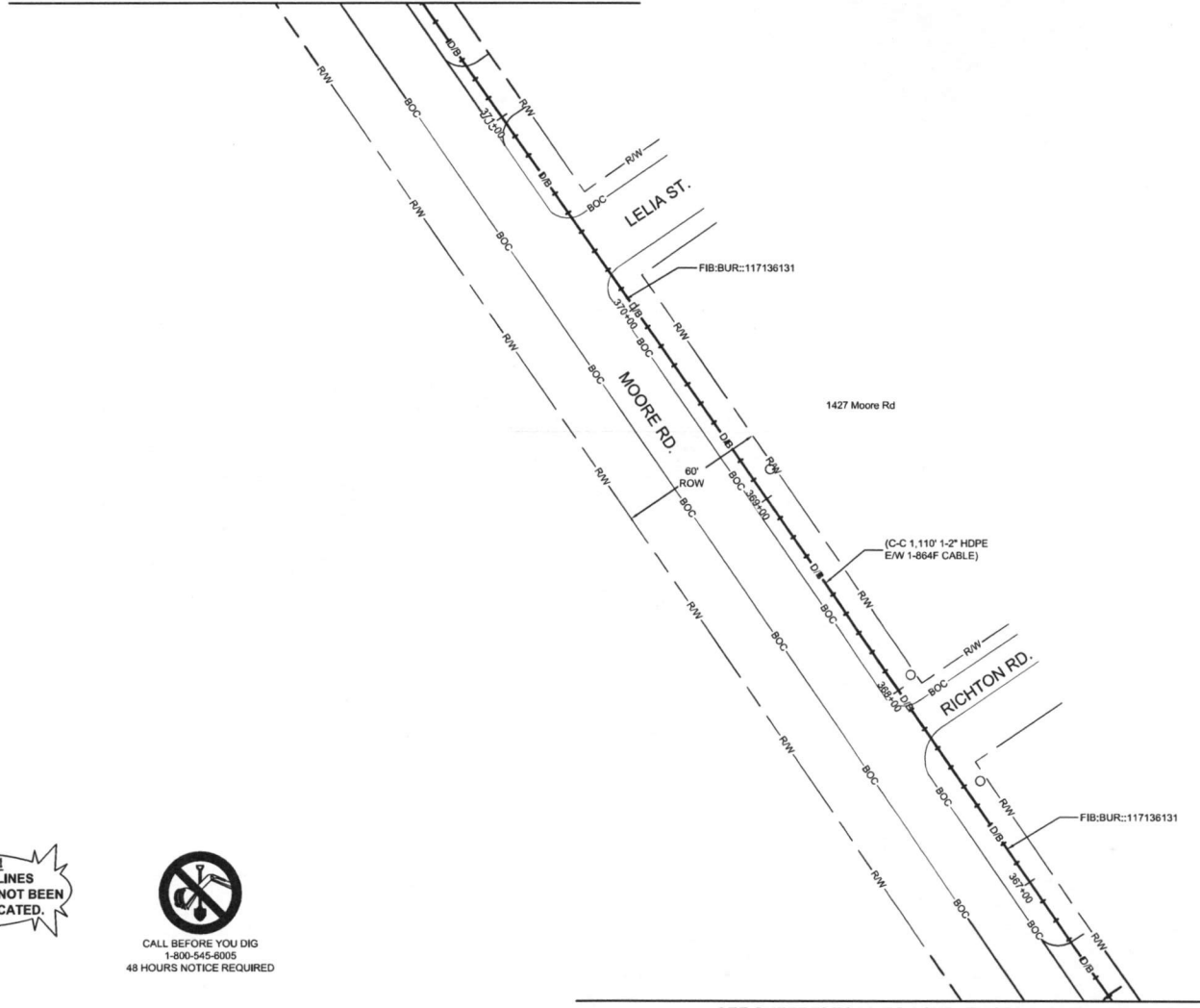
MCImetro  
ACCESS TRANSMISSION SERVICES  
CORPORATION  
OUTSIDE PLANT CONSTRUCTION  
TITLE: FIBER OPTIC ROUTE  
MISSOURI CITY TO WESTBURY  
HOUSTON, TX

DATE: 08/09/18  
ENGINEER: L. STALCUP  
DRAWN BY: G.F.S. C.JW

REVISIONS			
No.	DATE	DESCRIPTION	BY

EXCEPT AS MAY BE OTHERWISE PROVIDED BY CONTRACT, THESE DRAWINGS AND SPECIFICATIONS SHALL REMAIN THE PROPERTY OF MCI COMMUNICATIONS SERVICES, INC. NOTHING ISSUED IN STRICT CONFIDENCE AND SHALL NOT BE REPRODUCED, COPIED, OR USED FOR ANY PURPOSE WITHOUT SPECIFIC WRITTEN PERMISSION.

SCALE  
HORIZONTAL: 1" = 50'  
VERTICAL: 1" = N/A  
MP TO MP  
SHEET 73 OF 80  
FILE: ECC-FBRBLD01073AC.LIN



**!!! CAUTION !!!**  
PIPELINE SERVICE LINES  
THRU THIS AREA HAVE NOT BEEN  
IDENTIFIED NOR INDICATED.



CALL BEFORE YOU DIG  
1-800-545-6005  
48 HOURS NOTICE REQUIRED

SEE SHEET 72 TO MATCH SURVEY STA. 366+40

UNDERGROUND UTILITIES HAVE BEEN PLOTTED FROM AVAILABLE RECORDS AND FIELD OBSERVATIONS BUT ARE NOT NECESSARILY EXACT. IT IS THE CONTRACTORS RESPONSIBILITY TO FIELD LOCATE ALL UNDERGROUND OBSTRUCTIONS AND UTILITIES PRIOR TO CONSTRUCTION. COMPLETE REPAIR OF ANY AND ALL DAMAGES INCURRED SHALL BE AT THE EXPENSE OF THE CONTRACTOR.

RIGHT OF WAY LINES WERE ESTABLISHED BY RESEARCH OF PUBLIC INFORMATION. NO BOUNDARY SURVEY OR PROPERTY LINE SURVEY WAS ESTABLISHED BY GOLDEN FIELD SERVICES, INC. RIGHT OF WAY BOUNDARY MUST BE FIELD VERIFIED BY A REGISTERED PROFESSIONAL LAND SURVEYOR TO ACCURATELY VERIFY RIGHT OF WAY AND PROPERTY LINES PRIOR TO CONSTRUCTION.

HOUSTON, TX  
HARRIS COUNTY  
SEE SHEET 75 TO MATCH SURVEY STA. 376+80



PROJECT: 1706AOZQ.035

HOUSTON, TX  
MISSOURI CITY TO WESTBURY

CLARIFICATION NO.	QUANTITY
PROP. 1-2" HDPE	530'
PULL 1-864F CABLE	530'

MCImetro  
ACCESS TRANSMISSION SERVICES  
CORPORATION

OUTSIDE PLANT CONSTRUCTION

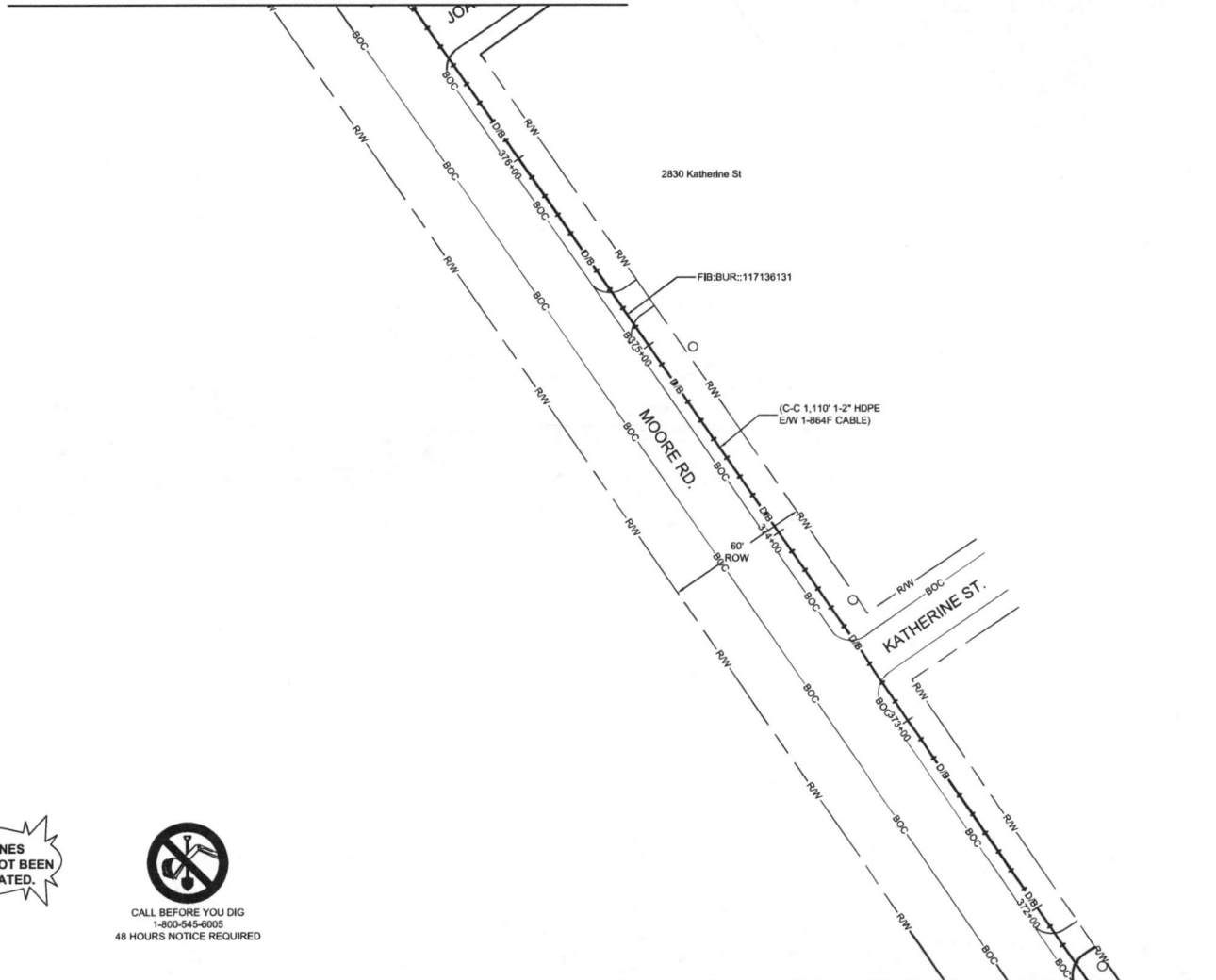
TITLE: FIBER OPTIC ROUTE  
MISSOURI CITY TO WESTBURY  
HOUSTON, TX

DATE: 08/09/18  
ENGINEER: L. STALCUP  
DRAWN BY: G.F.S. C.J.W.

REVISIONS			
No.	DATE	DESCRIPTION	BY

EXCEPT AS MAY BE OTHERWISE PROVIDED BY CONTRACT, THESE DRAWINGS AND SPECIFICATIONS SHALL REMAIN THE PROPERTY OF MCI COMMUNICATIONS SERVICES INC. BOTH BEING ISSUED IN STRICT CONFIDENCE AND SHALL NOT BE REPRODUCED, COPIED, OR USED FOR ANY PURPOSE WITHOUT SPECIFIC WRITTEN PERMISSION.

SCALE  
HORIZONTAL: 1" = 50'  
VERTICAL: 1" = N/A  
MP TO MP  
SHEET 74 OF 80  
FILE: ECC-FBRBLD01074.AC.LIN



!!! CAUTION !!!  
PIPELINE SERVICE LINES  
THRU THIS AREA HAVE NOT BEEN  
IDENTIFIED NOR INDICATED.

CALL BEFORE YOU DIG  
1-800-545-6005  
48 HOURS NOTICE REQUIRED

UNDERGROUND UTILITIES HAVE BEEN PLOTTED FROM AVAILABLE RECORDS AND FIELD OBSERVATIONS BUT ARE NOT NECESSARILY EXACT. IT IS THE CONTRACTORS RESPONSIBILITY TO FIELD LOCATE ALL UNDERGROUND OBSTRUCTIONS AND UTILITIES PRIOR TO CONSTRUCTION. COMPLETE REPAIR OF ANY AND ALL DAMAGES INCURRED SHALL BE AT THE EXPENSE OF THE CONTRACTOR.

RIGHT OF WAY LINES WERE ESTABLISHED BY RESEARCH OF PUBLIC INFORMATION. NO BOUNDARY SURVEY OR PROPERTY LINE SURVEY WAS ESTABLISHED BY GOLDEN FIELD SERVICES, INC.. RIGHT OF WAY BOUNDARY MUST BE FIELD VERIFIED BY A REGISTERED PROFESSIONAL LAND SURVEYOR TO ACCURATELY VERIFY RIGHT OF WAY AND PROPERTY LINES PRIOR TO CONSTRUCTION.

SEE SHEET 73 TO MATCH SURVEY STA. 371+60

HOUSTON, TX  
HARRIS COUNTY

SEE SHEET 76 TO MATCH SURVEY STA. 382+00



PROJECT: 1706AOZQ.035

HOUSTON, TX  
MISSOURI CITY TO WESTBURY

CLARIFICATION NO.	QUANTITY
PLACE (30"x60"x30") HH	1
PROP. 1-2" HDPE	490'
PULL 1-864F CABLE	590'
PLACE 6M STRAND	55'
LASH 1-864F CABLE	30'
DOWN GUY & ANCHOR	1
RISE: 2" U GUARD	1
PLACE MARKER	1

MCI/Verizon  
 ACCESS TRANSMISSION SERVICES  
 CORPORATION  
 OUTSIDE PLANT CONSTRUCTION  
 TITLE: FIBER OPTIC ROUTE  
 MISSOURI CITY TO WESTBURY  
 HOUSTON, TX

DATE: 08/09/18  
ENGINEER: L. STALCUP  
DRAWN BY: G.F.S. C.J.W.

REVISIONS			
No.	DATE	DESCRIPTION	BY

EXCEPT AS MAY BE OTHERWISE PROVIDED BY CONTRACT, THESE DRAWINGS AND SPECIFICATIONS SHALL REMAIN THE PROPERTY OF MCI COMMUNICATIONS SERVICES INC. BOTH BEING ISSUED IN STRICT CONFIDENCE AND SHALL NOT BE REPRODUCED, COPIED, OR USED FOR ANY PURPOSE WITHOUT SPECIFIC WRITTEN PERMISSION.

SCALE  
HORIZONTAL: 1"= 50'  
VERTICAL: 1"= N/A  
MP \_\_\_\_\_ TO MP \_\_\_\_\_  
SHEET 75 OF 80  
FILE: ECC-FBRBLD01075AC.LIN

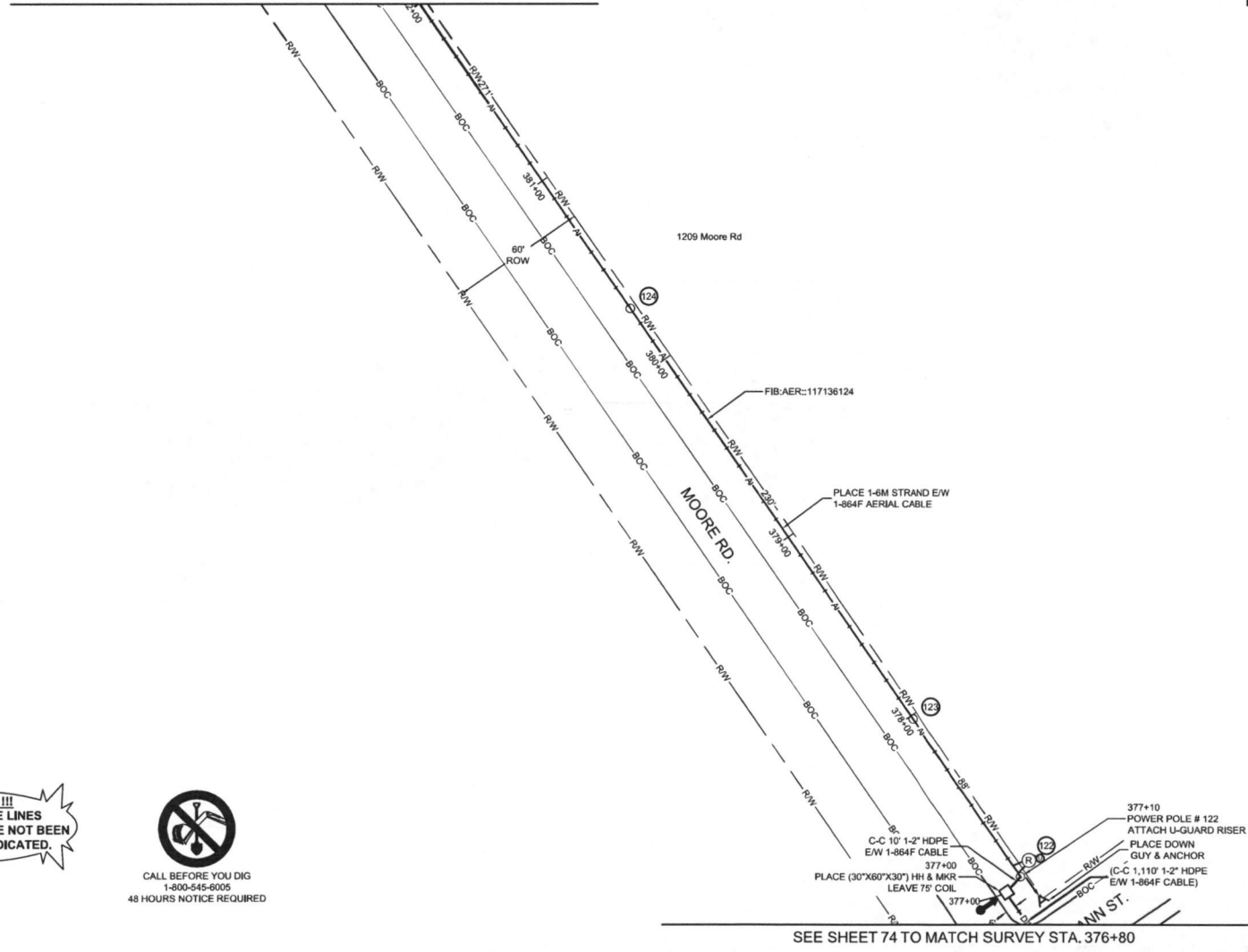
**!!! CAUTION !!!**  
PIPELINE SERVICE LINES  
THRU THIS AREA HAVE NOT BEEN  
IDENTIFIED NOR INDICATED.



CALL BEFORE YOU DIG  
1-800-545-6005  
48 HOURS NOTICE REQUIRED

UNDERGROUND UTILITIES HAVE BEEN PLOTTED FROM AVAILABLE RECORDS AND FIELD OBSERVATIONS BUT ARE NOT NECESSARILY EXACT. IT IS THE CONTRACTORS RESPONSIBILITY TO FIELD LOCATE ALL UNDERGROUND OBSTRUCTIONS AND UTILITIES PRIOR TO CONSTRUCTION. COMPLETE REPAIR OF ANY AND ALL DAMAGES INCURRED SHALL BE AT THE EXPENSE OF THE CONTRACTOR.

RIGHT OF WAY LINES WERE ESTABLISHED BY RESEARCH OF PUBLIC INFORMATION. NO BOUNDARY SURVEY OR PROPERTY LINE SURVEY WAS ESTABLISHED BY GOLDEN FIELD SERVICES, INC. RIGHT OF WAY BOUNDARY MUST BE FIELD VERIFIED BY A REGISTERED PROFESSIONAL LAND SURVEYOR TO ACCURATELY VERIFY RIGHT OF WAY AND PROPERTY LINES PRIOR TO CONSTRUCTION.



SEE SHEET 74 TO MATCH SURVEY STA. 376+80

HOUSTON, TX  
HARRIS COUNTY



PROJECT: 1706AOZQ.035

HOUSTON, TX  
MISSOURI CITY TO WESTBURY

CLARIFICATION NO.	QUANTITY
PLACE 1-6M STRAND	1,000'
LASH 1-864F CABLE	1,000'
DOWN GUY & ANCHOR	2

MCImetro  
ACCESS TRANSMISSION SERVICES  
CORPORATION  
OUTSIDE PLANT CONSTRUCTION  
TITLE: FIBER OPTIC ROUTE  
MISSOURI CITY TO WESTBURY  
HOUSTON, TX

DATE: 08/09/18

ENGINEER: L. STALCUP

DRAWN BY: G.F.S. CJW

REVISIONS

No.	DATE	DESCRIPTION	BY

EXCEPT AS MAY BE OTHERWISE PROVIDED BY CONTRACT, THESE DRAWINGS AND SPECIFICATIONS SHALL REMAIN THE PROPERTY OF MCI COMMUNICATIONS SERVICES INC. BOTH BEING ISSUED IN STRICT CONFIDENCE AND SHALL NOT BE REPRODUCED, COPIED, OR USED FOR ANY PURPOSE WITHOUT SPECIFIC WRITTEN PERMISSION.

SCALE

HORIZONTAL: 1"= 50'

VERTICAL: 1"= N/A

MP TO MP

SHEET 76 OF 80

FILE: ECC-FBRBLD01076AC.LIN

SEE SHEET 77 TO MATCH SURVEY STA. 391+50

UNDERGROUND UTILITIES HAVE BEEN PLOTTED FROM AVAILABLE RECORDS AND FIELD OBSERVATIONS BUT ARE NOT NECESSARILY EXACT. IT IS THE CONTRACTORS RESPONSIBILITY TO FIELD LOCATE ALL UNDERGROUND OBSTRUCTIONS AND UTILITIES PRIOR TO CONSTRUCTION. COMPLETE REPAIR OF ANY AND ALL DAMAGES INCURRED SHALL BE AT THE EXPENSE OF THE CONTRACTOR.

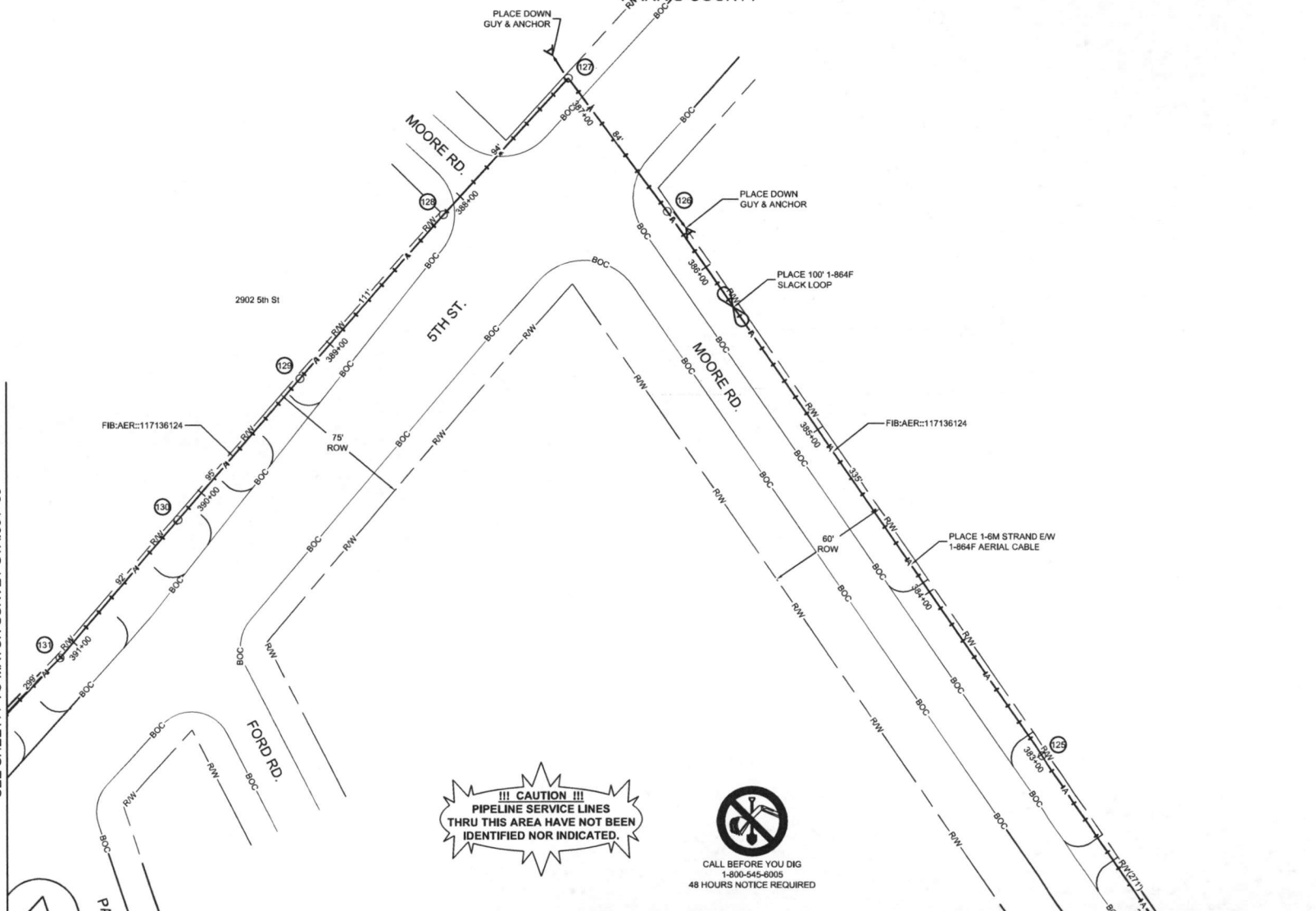
RIGHT OF WAY LINES WERE ESTABLISHED BY RESEARCH OF PUBLIC INFORMATION. NO BOUNDARY SURVEY OR PROPERTY LINE SURVEY WAS ESTABLISHED BY GOLDEN FIELD SERVICES, INC. RIGHT OF WAY BOUNDARY MUST BE FIELD VERIFIED BY A REGISTERED PROFESSIONAL LAND SURVEYOR TO ACCURATELY VERIFY RIGHT OF WAY AND PROPERTY LINES PRIOR TO CONSTRUCTION.

**!!! CAUTION !!!**  
PIPELINE SERVICE LINES  
THRU THIS AREA HAVE NOT BEEN  
IDENTIFIED NOR INDICATED.



CALL BEFORE YOU DIG  
1-800-545-6005  
48 HOURS NOTICE REQUIRED

SEE SHEET 75 TO MATCH SURVEY STA. 382+00



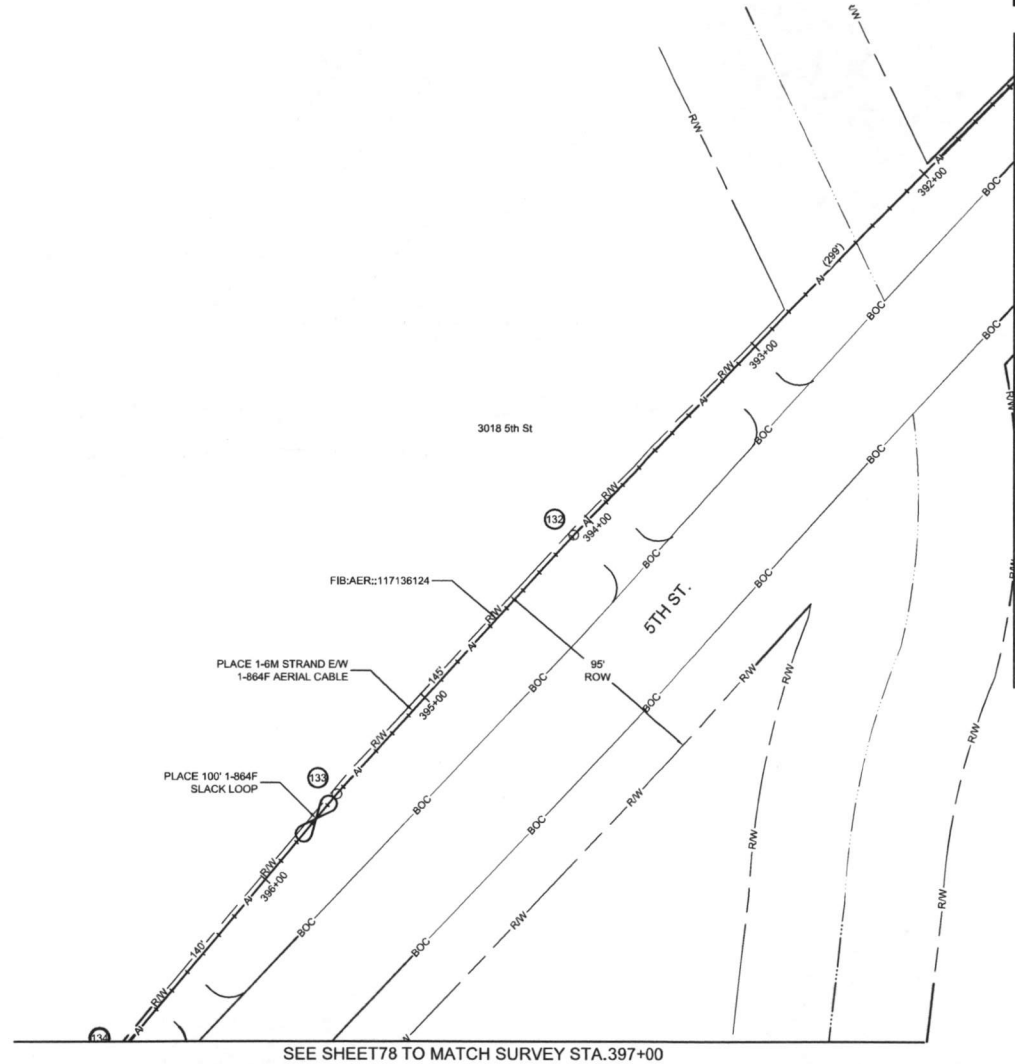
HOUSTON, TX  
HARRIS COUNTY



PROJECT: 1706AOZQ.035  
HOUSTON, TX  
MISSOURI CITY TO WESTBURY

CLARIFICATION NO.	QUANTITY
PLACE 1-6M STRAND	550'
LASH 1-864F CABLE	650'

SEE SHEET 76 TO MATCH SURVEY STA. 391+50



SEE SHEET 78 TO MATCH SURVEY STA. 397+00

**!!! CAUTION !!!**  
PIPELINE SERVICE LINES  
THRU THIS AREA HAVE NOT BEEN  
IDENTIFIED NOR INDICATED.



CALL BEFORE YOU DIG  
1-800-545-6005  
48 HOURS NOTICE REQUIRED

MCI metro  
ACCESS TRANSMISSION SERVICES  
CORPORATION  
OUTSIDE PLANT CONSTRUCTION  
TITLE: FIBER OPTIC ROUTE  
MISSOURI CITY TO WESTBURY  
HOUSTON, TX

DATE: 08/09/18  
ENGINEER: L. STALCUP  
DRAWN BY: G.F.S. C.J.W

REVISIONS			
NO.	DATE	DESCRIPTION	BY

EXCEPT AS MAY BE OTHERWISE PROVIDED BY CONTRACT THESE DRAWINGS AND SPECIFICATIONS SHALL REMAIN THE PROPERTY OF MCI COMMUNICATIONS SERVICES INC. BOTH BEING ISSUED IN STRICT CONFERENCE AND SHALL NOT BE REPRODUCED, COPIED, OR USED FOR ANY PURPOSE WITHOUT SPECIFIC WRITTEN PERMISSION.

SCALE  
HORIZONTAL: 1" = 50'  
VERTICAL: 1" = N/A  
MP TO MP  
SHEET 77 OF 80  
FILE: ECC-FBRBLD01077AC.LIN

UNDERGROUND UTILITIES HAVE BEEN PLOTTED FROM AVAILABLE RECORDS AND FIELD OBSERVATIONS BUT ARE NOT NECESSARILY EXACT. IT IS THE CONTRACTORS RESPONSIBILITY TO FIELD LOCATE ALL UNDERGROUND OBSTRUCTIONS AND UTILITIES PRIOR TO CONSTRUCTION. COMPLETE REPAIR OF ANY AND ALL DAMAGES INCURRED SHALL BE AT THE EXPENSE OF THE CONTRACTOR.

RIGHT OF WAY LINES WERE ESTABLISHED BY RESEARCH OF PUBLIC INFORMATION. NO BOUNDARY SURVEY OR PROPERTY LINE SURVEY WAS ESTABLISHED BY GOLDEN FIELD SERVICES, INC.. RIGHT OF WAY BOUNDARY MUST BE FIELD VERIFIED BY A REGISTERED PROFESSIONAL LAND SURVEYOR TO ACCURATELY VERIFY RIGHT OF WAY AND PROPERTY LINES PRIOR TO CONSTRUCTION.

HOUSTON, TX  
HARRIS COUNTY

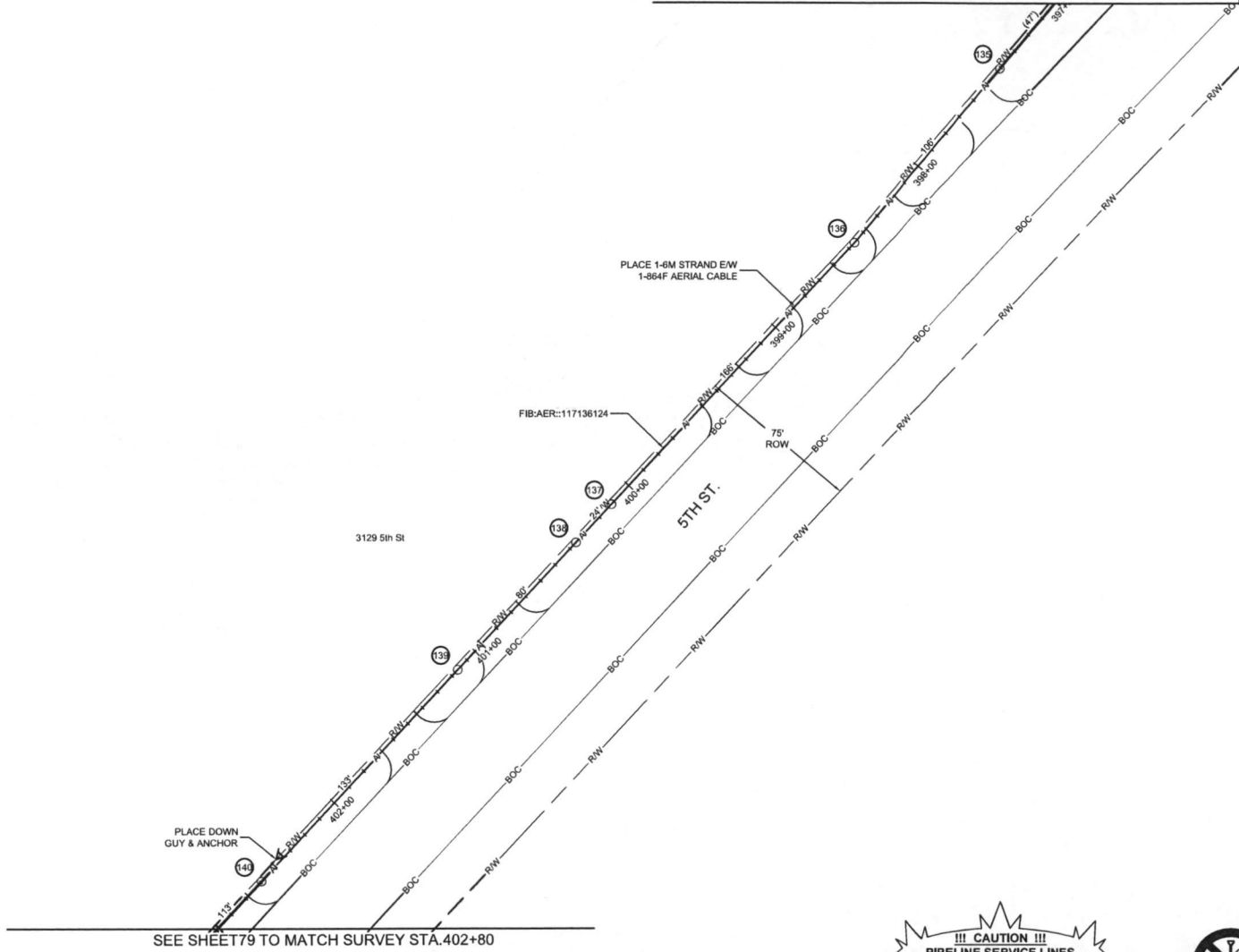
SEE SHEET 77 TO MATCH SURVEY STA. 397+00



PROJECT: 1706AOZQ.035

HOUSTON, TX  
MISSOURI CITY TO WESTBURY

CLARIFICATION NO.	QUANTITY
PLACE 1-6M STRAND	605
LASH 1-864F CABLE	680
DOWN GUY & ANCHOR	1



SEE SHEET 79 TO MATCH SURVEY STA. 402+80

McImetro  
ACCESS TRANSMISSION SERVICES  
CORPORATION  
OUTSIDE PLANT CONSTRUCTION  
TITLE: FIBER OPTIC ROUTE  
MISSOURI CITY TO WESTBURY  
HOUSTON, TX

DATE: 08/09/18  
ENGINEER: L. STALCUP  
DRAWN BY: G.F.S. CJW

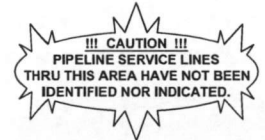
REVISIONS			
No.	DATE	DESCRIPTION	BY

EXCEPT AS MAY BE OTHERWISE PROVIDED BY CONTRACT, THESE DRAWINGS AND SPECIFICATIONS SHALL REMAIN THE PROPERTY OF MCI COMMUNICATIONS SERVICES, INC. BOTH BEING ISSUED IN STRICT CONFIDENCE AND SHALL NOT BE REPRODUCED, COPIED, OR LENT FOR ANY PURPOSE WITHOUT SPECIFIC WRITTEN PERMISSION.

SCALE  
HORIZONTAL: 1"= 50'  
VERTICAL: 1"= N/A  
MP TO MP  
SHEET 78 OF 80  
FILE: ECC-FRRBLD01078AC.LIN

UNDERGROUND UTILITIES HAVE BEEN PLOTTED FROM AVAILABLE RECORDS AND FIELD OBSERVATIONS BUT ARE NOT NECESSARILY EXACT. IT IS THE CONTRACTORS RESPONSIBILITY TO FIELD LOCATE ALL UNDERGROUND OBSTRUCTIONS AND UTILITIES PRIOR TO CONSTRUCTION. COMPLETE REPAIR OF ANY AND ALL DAMAGES INCURRED SHALL BE AT THE EXPENSE OF THE CONTRACTOR.

RIGHT OF WAY LINES WERE ESTABLISHED BY RESEARCH OF PUBLIC INFORMATION. NO BOUNDARY SURVEY OR PROPERTY LINE SURVEY WAS ESTABLISHED BY GOLDEN FIELD SERVICES, INC. RIGHT OF WAY BOUNDARY MUST BE FIELD VERIFIED BY A REGISTERED PROFESSIONAL LAND SURVEYOR TO ACCURATELY VERIFY RIGHT OF WAY AND PROPERTY LINES PRIOR TO CONSTRUCTION.

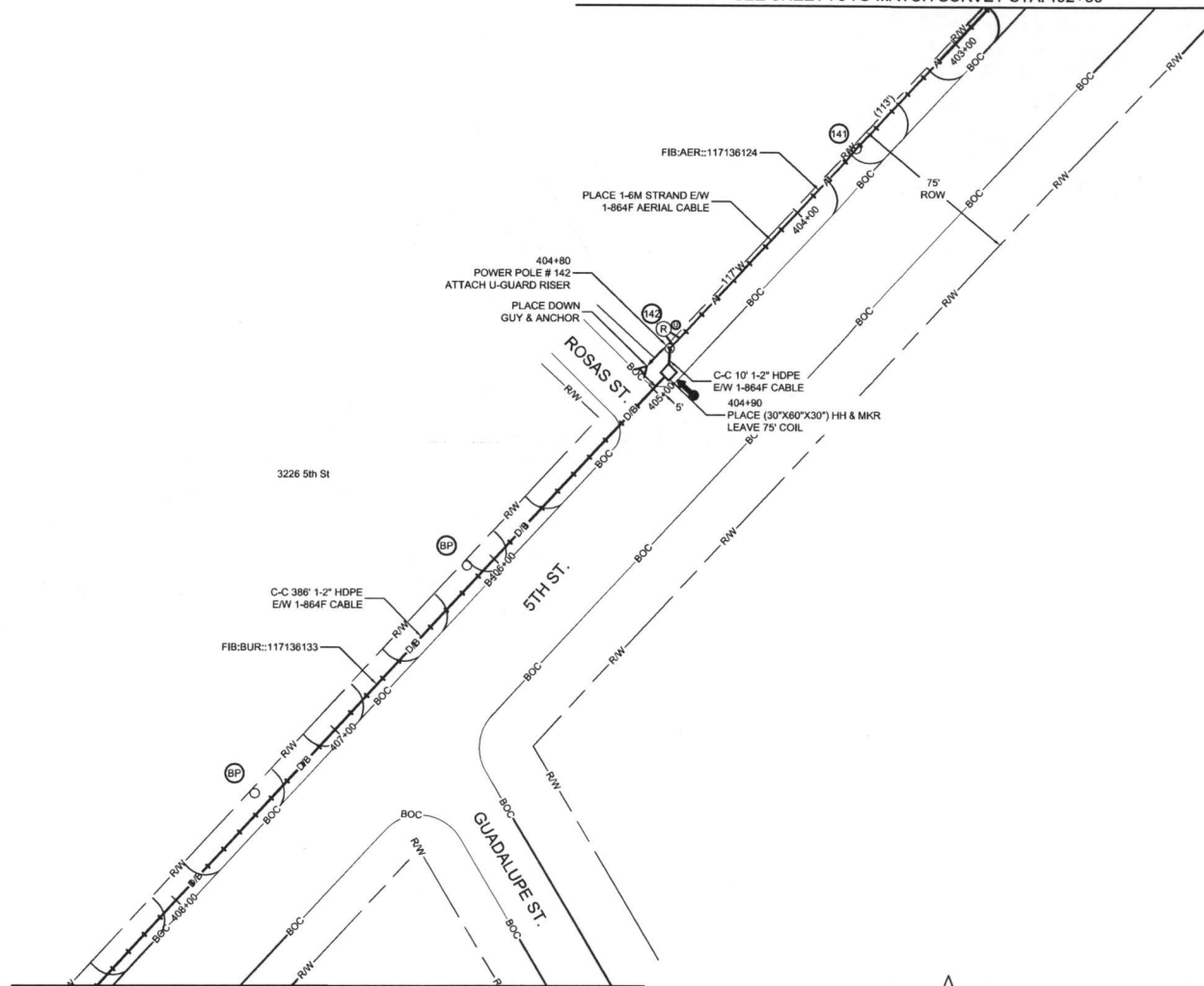


CALL BEFORE YOU DIG  
1-800-545-6005  
48 HOURS NOTICE REQUIRED

HOUSTON, TX  
HARRIS COUNTY



SEE SHEET 78 TO MATCH SURVEY STA. 402+80



SEE SHEET 80 TO MATCH SURVEY STA. 408+50

PROJECT: 1706AOZQ.035  
HOUSTON, TX  
MISSOURI CITY TO WESTBURY

CLARIFICATION NO.	QUANTITY
PLACE (30"X60"X30") HH	1
PROP. 1-2" HDPE	370'
PULL 1-864F CABLE	470'
PLACE 6M STRAND	225'
LASH 1-864F CABLE	200'
DOWN GUY & ANCHOR	1
RISER: 2" U GUARD	1
PLACE MARKER	1

MCMetro  
ACCESS TRANSMISSION SERVICES  
CORPORATION  
OUTSIDE PLANT CONSTRUCTION  
TITLE: FIBER OPTIC ROUTE  
MISSOURI CITY TO WESTBURY  
HOUSTON, TX

DATE: 08/09/18  
ENGINEER: L. STALCUP  
DRAWN BY: G.F.S. C.J.W.

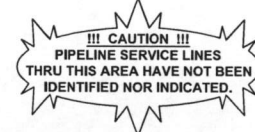
REVISIONS			
No.	DATE	DESCRIPTION	BY

EXCEPT AS MAY BE OTHERWISE PROVIDED BY CONTRACT, THESE DRAWINGS AND SPECIFICATIONS SHALL REMAIN THE PROPERTY OF MCI COMMUNICATIONS SERVICES INC. BOTH BEING ISSUED IN STRICT CONFIDENCE AND SHALL NOT BE REPRODUCED, COPIED, OR USED FOR ANY PURPOSE WITHOUT SPECIFIC WRITTEN PERMISSION.

SCALE  
HORIZONTAL: 1" = 50'  
VERTICAL: 1" = N/A  
MP TO MP  
SHEET 79 OF 80  
FILE: ECC-FBRBLD01079AC.LIN

UNDERGROUND UTILITIES HAVE BEEN PLOTTED FROM AVAILABLE RECORDS AND FIELD OBSERVATIONS BUT ARE NOT NECESSARILY EXACT. IT IS THE CONTRACTORS RESPONSIBILITY TO FIELD LOCATE ALL UNDERGROUND OBSTRUCTIONS AND UTILITIES PRIOR TO CONSTRUCTION. COMPLETE REPAIR OF ANY AND ALL DAMAGES INCURRED SHALL BE AT THE EXPENSE OF THE CONTRACTOR.

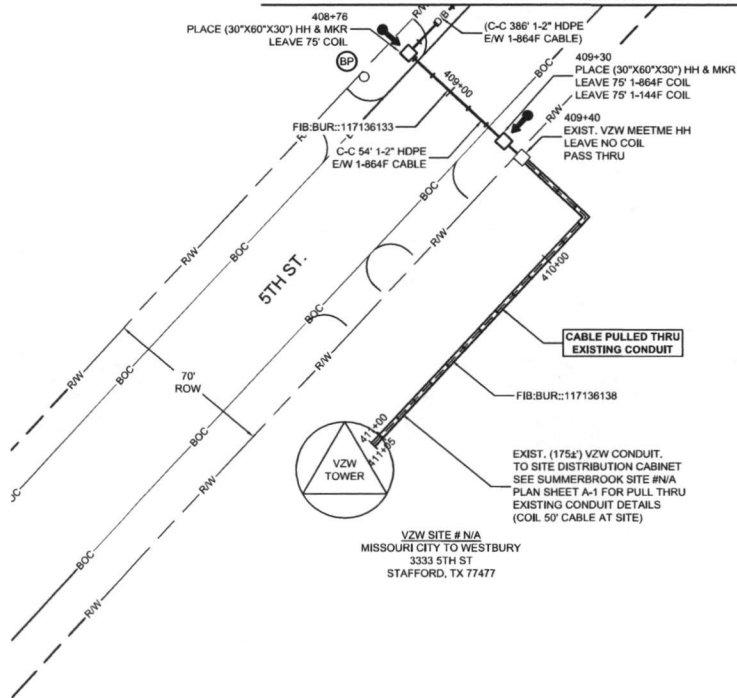
RIGHT OF WAY LINES WERE ESTABLISHED BY RESEARCH OF PUBLIC INFORMATION. NO BOUNDARY SURVEY OR PROPERTY LINE SURVEY WAS ESTABLISHED BY GOLDEN FIELD SERVICES, INC.. RIGHT OF WAY BOUNDARY MUST BE FIELD VERIFIED BY A REGISTERED PROFESSIONAL LAND SURVEYOR TO ACCURATELY VERIFY RIGHT OF WAY AND PROPERTY LINES PRIOR TO CONSTRUCTION.



CALL BEFORE YOU DIG  
1-800-545-6005  
48 HOURS NOTICE REQUIRED

HOUSTON, TX  
HARRIS COUNTY

SEE SHEET 79 TO MATCH SURVEY STA. 408+50



PROJECT: 1706AOZQ.035

HOUSTON, TX  
MISSOURI CITY TO WESTBURY

CLARIFICATION NO.	QUANTITY
PLACE (30"x60"x30") HH	2
PROP. 1-2" HDPE	80'
PULL 1-144F CABLE	300'
PULL 1-864F CABLE	305'
PLACE MARKER	2

MClmetro  
ACCESS TRANSMISSION SERVICES  
CORPORATION

OUTSIDE PLANT CONSTRUCTION

TITLE: FIBER OPTIC ROUTE  
MISSOURI CITY TO WESTBURY  
HOUSTON, TX

DATE: 08/09/18  
ENGINEER: L. STALCUP  
DRAWN BY: G.F.S. C.JW

REVISIONS			
No.	DATE	DESCRIPTION	BY

EXCEPT AS MAY BE OTHERWISE PROVIDED BY CONTRACT, THESE DRAWINGS AND SPECIFICATIONS SHALL REMAIN THE PROPERTY OF MCI COMMUNICATIONS SERVICES INC. BOTH BEING ISSUED IN STRICT CONFIDENCE AND SHALL NOT BE REPRODUCED, COPIED, OR USED FOR ANY PURPOSE WITHOUT SPECIFIC WRITTEN PERMISSION.

SCALE  
HORIZONTAL: 1"= 50'  
VERTICAL: 1"= N/A  
MP TO MP  
SHEET 80 OF 80  
FILE: ECC-FBRBLD01080AC.LIN

UNDERGROUND UTILITIES HAVE BEEN PLOTTED FROM AVAILABLE RECORDS AND FIELD OBSERVATIONS BUT ARE NOT NECESSARILY EXACT. IT IS THE CONTRACTORS RESPONSIBILITY TO FIELD LOCATE ALL UNDERGROUND OBSTRUCTIONS AND UTILITIES PRIOR TO CONSTRUCTION. COMPLETE REPAIR OF ANY AND ALL DAMAGES INCURRED SHALL BE AT THE EXPENSE OF THE CONTRACTOR.

RIGHT OF WAY LINES WERE ESTABLISHED BY RESEARCH OF PUBLIC INFORMATION. NO BOUNDARY SURVEY OR PROPERTY LINE SURVEY WAS ESTABLISHED BY GOLDEN FIELD SERVICES, INC. RIGHT OF WAY BOUNDARY MUST BE FIELD VERIFIED BY A REGISTERED PROFESSIONAL LAND SURVEYOR TO ACCURATELY VERIFY RIGHT OF WAY AND PROPERTY LINES PRIOR TO CONSTRUCTION.



CALL BEFORE YOU DIG  
1-800-545-6005  
48 HOURS NOTICE REQUIRED

## **Velasquez, Courtney**

---

**From:** Slawinski, Stacy  
**Sent:** Thursday, August 23, 2018 2:09 PM  
**To:** Velasquez, Courtney  
**Cc:** Peterson, Jillian; Eglinton, Sean  
**Subject:** RE: Permit 2018-22801 - Court Rd.

Courtney,

This work is adjacent to the Independence Blvd Seg 1; 2013 Mobility Project No. 13204. This project is being managed by the City of Missouri City, so the City will need to review plans. I assume they will be since this work is within their City limits. Let me know if you have any questions.

Thanks,  
**Stacy Slawinski**  
[stacy.slawinski@fortbendcountytexas.gov](mailto:stacy.slawinski@fortbendcountytexas.gov)  
281-633-7508 office

**From:** Velasquez, Courtney  
**Sent:** Thursday, August 23, 2018 11:40 AM  
**To:** Slawinski, Stacy <[Stacy.Slawinski@fortbendcountytexas.gov](mailto:Stacy.Slawinski@fortbendcountytexas.gov)>  
**Cc:** Peterson, Jillian <[Jillian.Peterson@fortbendcountytexas.gov](mailto:Jillian.Peterson@fortbendcountytexas.gov)>; Eglinton, Sean <[Sean.Eglinton@fortbendcountytexas.gov](mailto:Sean.Eglinton@fortbendcountytexas.gov)>  
**Subject:** FW: Permit 2018-22801 - Court Rd.

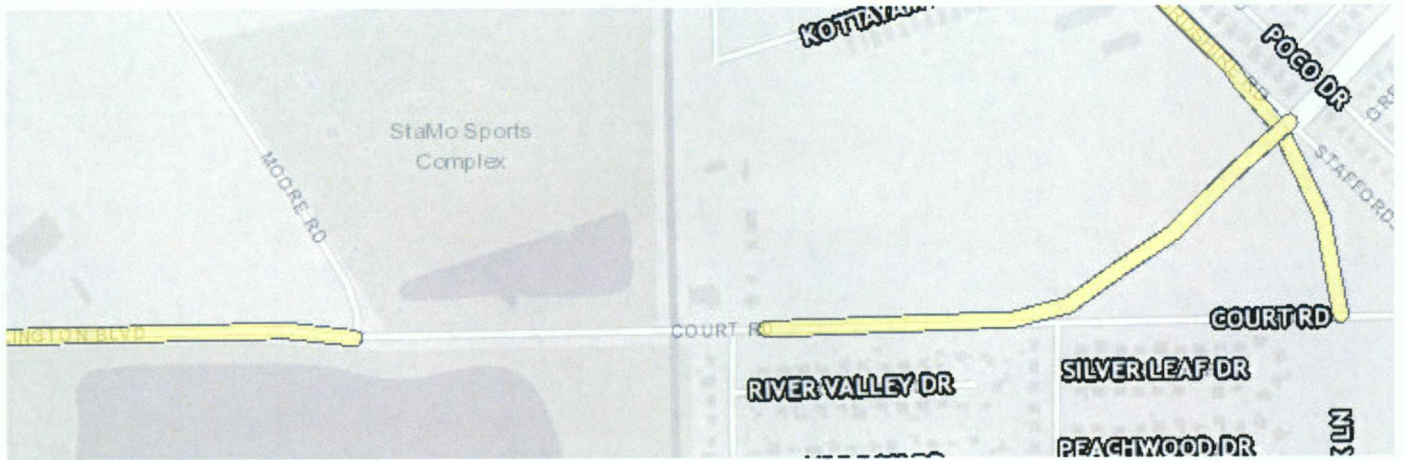
Stacy did you get a chance to look at this permit? I don't remember seeing a response and the applicant is checking on it.

**From:** Velasquez, Courtney  
**Sent:** Tuesday, August 21, 2018 9:52 AM  
**To:** Slawinski, Stacy <[Stacy.Slawinski@fortbendcountytexas.gov](mailto:Stacy.Slawinski@fortbendcountytexas.gov)>  
**Cc:** Eglinton, Sean <[Sean.Eglinton@fortbendcountytexas.gov](mailto:Sean.Eglinton@fortbendcountytexas.gov)>; Peterson, Jillian <[Jillian.Peterson@fortbendcountytexas.gov](mailto:Jillian.Peterson@fortbendcountytexas.gov)>  
**Subject:** Permit 2018-22801 - Court Rd.

Stacy,

Can you please take a look at this permit application for me. It is MCI and they are proposing this:  
"Proposed buried and aerial fiber optic cable installation entering FTBC ROW on the Northwest corner of FM 2234 and Court Rd then continue west to the Northeast corner of Court Rd. and Moore Rd. then continue North to the Northeast corner of Moore Rd and"

It appears to be crossing or coming near the mobility that was proposed (2013). They are coming up Court Rd. to go up Moore Rd. I am not sure if this project is done.



Plat submittal deadline for the September 11<sup>th</sup> Commissioners Court agenda is Thursday, August 30<sup>th</sup> by 5pm.

**Courtney Velasquez**

**Clerk III**

**Fort Bend County Engineering**

301 Jackson St., Suite 401 | Richmond, TX 77469

Email: [Courtney.Velasquez@fortbendcountytx.gov](mailto:Courtney.Velasquez@fortbendcountytx.gov)

Phone: 281-633-7516

## **Velasquez, Courtney**

---

**From:** Brad Creekmore <brad.creekmore@yahoo.com>  
**Sent:** Friday, August 24, 2018 7:02 AM  
**To:** Velasquez, Courtney  
**Cc:** 'kcreekmore@goldenfieldservices.com'; Peterson, Jillian; Eglinton, Sean; Slawinski, Stacy; marcus.armijo@verizon.com; warren.hardy@ervincable.com  
**Subject:** Re: FBC Permit 2018-22801- Court Rd.

CAUTION: This email originated from outside of the organization. Do not click links or open attachments unless you recognize the sender and know the content is safe.

Yes, I approve. Please process the permit. Thank you!

Sincerely,

Bradley Creekmore  
Golden Field Services  
10830 E. 45th St. Ste. 405  
Tulsa, OK. 74146  
C: 254-669-1544

On Thursday, August 23, 2018 03:55:17 PM CDT, Velasquez, Courtney <Courtney.Velasquez@fortbendcountytexas.gov> wrote:

Brad,

On this permit, it also needs a revised site plan that exclude everything except the portion in FBC. On this particular one, a Permit from the City of Missouri City is needed and in the section on Court Street, there is a mobility project in Missouri City. So you need to send your plans of course to them for approval. See below or the "snip it" site plan example. (the area in yellow is a mobility project)

Again in the future, you can use a site map such as this or you can extract the pages from your plans as I did in the attachment. Just like the Permit 2018-22797 we discussed earlier today.

