

Fort Bend County Engineering  
FORT BEND COUNTY, TEXAS

5C

Richard W. Stolleis, P.E.  
County Engineer

June 14, 2018

Commissioner Vincent M. Morales, Jr.  
Fort Bend County Precinct 1  
1517 Eugene Heimann Circle  
Richmond, TX 77469

**RE: Del Webb-Richmond and Veranda Subdivisions – “No Thru Trucks” Signs**

Dear Commissioner Morales:

On June 6, 2017, Fort Bend County Commissioners Court approved the installation of No Thru Trucks signs at the following locations:

- Eastbound Del Webb Boulevard, east of FM 762
- Northbound Veranda Trails Parkway, north of Sweetgrass Circle
- Southbound Veranda Trails Parkway, south of Holston Meadows Drive
- Southbound Veranda Trails Parkway, south of Williams Way Boulevard

Through consultation with the Fort Bend County Sherriff's Office, the Fort Bend County Attorney's Office and the Fort Bend County District Attorney's Office, the Fort Bend County Engineering Department has drafted a Commissioners Court Order to further define the thru truck restriction and impose a criminal penalty for its violation

The Order is attached for your review.

If we can be of further assistance please do not hesitate to contact me at 281-633-7528 or [chris.debaillon@fortbendcountytexas.gov](mailto:chris.debaillon@fortbendcountytexas.gov).

Sincerely,

A handwritten signature in black ink, appearing to read "Chris Debaillon".

Chris Debaillon, PE, PTOE  
Assistant County Engineer - Traffic

CDD/mjs

cc: Judge Robert E. Hebert, County Judge  
Marc Grant - FBC Road & Bridge  
Brian Fields - Signage Department  
File

301 Jackson St., Suite 401, Richmond, TX 77469  
Phone 281-633-7500



Fort Bend County Engineering  
FORT BEND COUNTY, TEXAS

Richard W. Stolleis, P.E.  
County Engineer

May 1, 2017

FOR INFO. ONLY -Approved by  
Commissioners Court on 6/6/2017.

Commissioner Vincent M. Morales, Jr.  
Fort Bend County Precinct 1  
1517 Eugene Heimann Circle  
Richmond, TX 77469

**RE: Del Webb-Richmond and Veranda Subdivisions – “No Thru Trucks” Signs**

Dear Commissioner Morales:

Fort Bend County Engineering Department has evaluated the request for No Thru Truck signs at the following locations:

- Eastbound Del Webb Boulevard, east of FM 762
- Northbound Veranda Trails Parkway, north of Sweetgrass Circle
- Southbound Veranda Trails Parkway, south of Holston Meadows Drive
- Southbound Veranda Trails Parkway, south of Williams Way Boulevard

Through truck traffic currently cutting through the Del Webb and Veranda subdivisions will be adequately served by remaining on major thoroughfares in the area.

The attached Traffic Control Plan (TCP) shows the proposed locations for the “No Thru Trucks” signs.

If we can be of further assistance please do not hesitate to contact me at 281-633-7528 or [chris.debaillon@fortbendcountytexas.gov](mailto:chris.debaillon@fortbendcountytexas.gov).

Sincerely,

Chris Debaillon, PE, PTOE  
Assistant County Engineer - Traffic

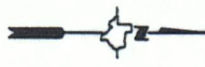
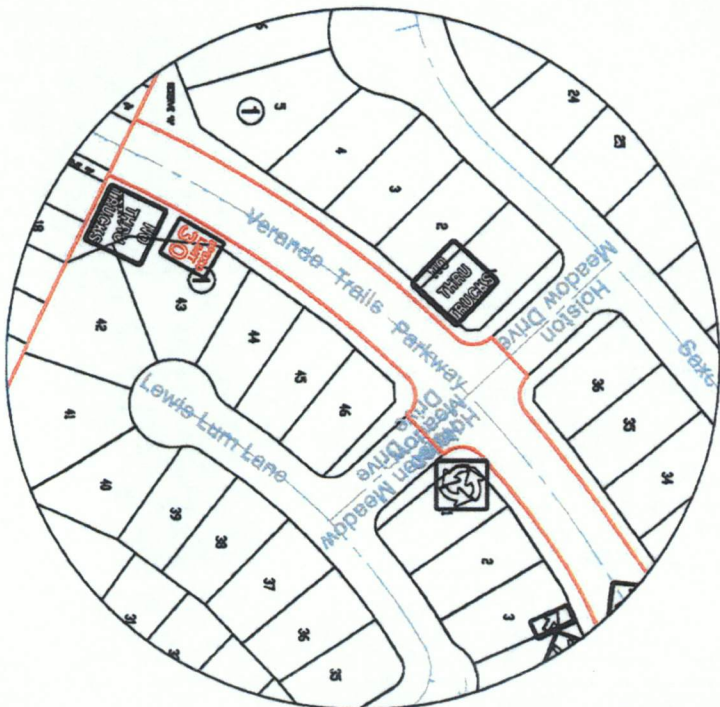
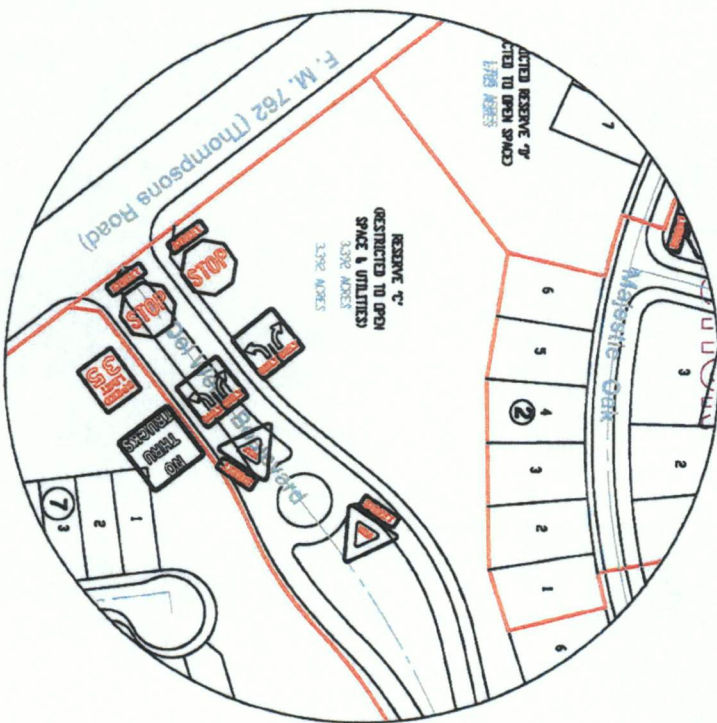
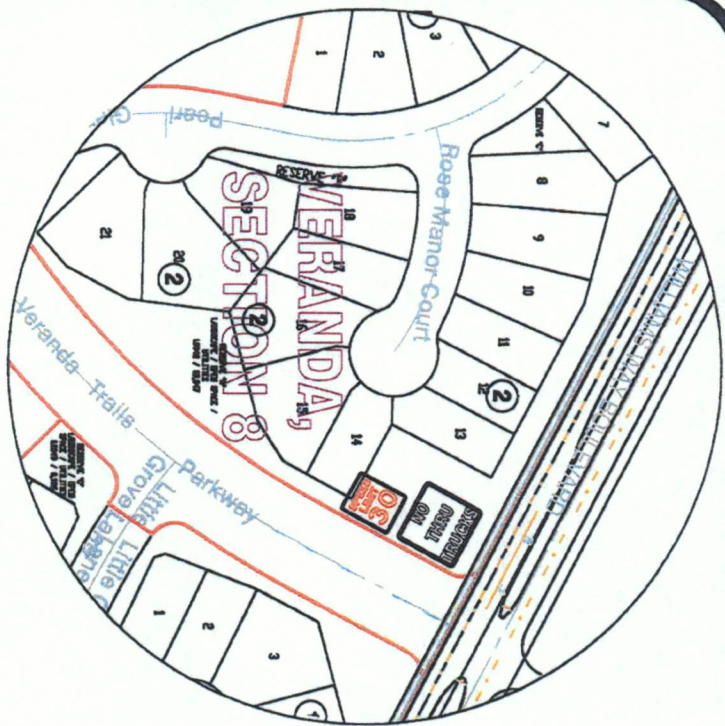
CDD/mjs

cc: Judge Robert E. Hebert, County Judge  
Marc Grant - FBC Road & Bridge  
Brian Fields - Signage Department  
File

301 Jackson St., Suite 401, Richmond, TX 77469  
Phone 281-633-7500



FOR INFO. ONLY- Approved by  
Commissioners Court on 6/6/2017



**Note:**

The purpose of this traffic control plan is to revise traffic control for Del Webb - Richmond and Veranda and Veranda with the addition of "No Thru Trucks" (R5-2) as indicated on the drawing.

Drawn By: L. Brdecka

Date: 4-28-17

Approved By: Chris Debeillon, PE PTOE

Date: 4/28/17

Scale

1" = 200'-0"

**Del Webb - Richmond and Veranda  
(Revised) Control Map and  
Traffic Sign Layout**

Fort Bend County Engineering Dept.  
301 Jackson Street  
Richmond, Texas 77469