

PO #153615

36Z

**CHANGE
ORDER**

Distribution:

- ☒ FBC Engineering
- ☒ FBC Judge
- ☒ FBC Purchasing
- ☒ Contractor
- ☒ Consultant

**FORT BEND COUNTY
ENGINEERING**

Address: 301 Jackson Street
Richmond, Texas 77469
Phone: 281-633-7500
Fax: 281-342-7366
Web site: www.FortBendCountyTx.gov

PROJECT:
Cane Island Parkway from FM 1463 to I10

CHANGE ORDER NUMBER 03
DATE 6/25/2018
PROJECT NUMBER 13306
CONTRACT FOR \$4,478,858.50
CONTRACT DATE 06/14/2017
FBC PURCHASE ORDER NO 153615

CONTRACTOR:
Earth Builders

The contract is changed as follows:

The contract TCP calls for construction of the temporary detour pavement on the south side of FM 1463 to match the existing cross slope of 11% from Station 13+15 to Station 113+57 (Sheet 18, 19, 20). This places the temporary pavement inside the existing ditch line. Due to the flat topography of the area, during a rain event, water will accumulate in the existing ditch resulting in standing surface water on the temporary pavement.

On February 2, 2018, the contractor sent an RFI to resolve the issue.

On March 7, 2018, Fort Bend, AECOM, EHRA, TEDSI, and Earth Builders met on site to discuss the issue and develop options to prevent standing water on the temporary pavement. EHRA, TEDSI recommendation was to reduce the super-elevation from 11% to 6% on FM 1463 which resulted in raising the elevation of the existing pavement and temporary pavement. FM 1463 is within TxDOT ROW; therefore, re-design requires approval by TxDOT.

On March 19, 2018, AECOM, EHRA, TEDSI and Earth Builders met with TxDOT to discuss the TCP revisions.

On March 29, 2018, EHRA provided the approved TCP revisions (addendum No. 13). TxDOT also agreed to allow work on weekend nights between the hours of 8:00PM to 8:00AM.

On April 13, 2018, Earth Builders submitted a CO cost for temporary pavement build up on FM 1463 of \$50,130.03. AECOM reviewed this cost and it is fair and reasonable (See Attached).

On April 30, 2018, Fort Bend approved CO cost.

On May 18, 2018, Earth Builders proceeded with the construction of temporary pavement on FM 1463.

Due to the issue with the detour temporary pavement, the contractor will not finish the work on time. The contractor is requesting a time extension of 60 days. This will move the finish date from July 12, 2018 to September 10, 2018.

Not valid until signed by Fort Bend County and Contractor.

The Original (Contract Sum)	\$	4,478,858.50
Net change by previously authorized Change Orders	\$	238,129.04
The (Contract Sum) Prior to this Change Order was	\$	4,716,987.54

07/25/2018 Original sent to Jessica Carabajal, Purchasing dept.

The (Contract Sum) will be ☒ increased **or** ☐ decreased **or** ☐ unchanged
by this Change Order in the amount of \$ 50,130.03

The new (Contract Sum) including this Change Order will be \$ 4,767,117.57

The Contract Time will be ☒ increased **or** ☐ decreased **or** ☐ unchanged by 60 days.
The Date of Substantial Completion as of this Change Order therefore is
☒ Changed **or** ☐ unchanged to **9/10/2018**.

Authorized:

Fort Bend County Engineering
J Stacy Slawinski, P.E.
301 Jackson
Richmond, Texas 77469

By: _____

(signature)

DATE: 07/05/18

CONTRACTOR
Earth Builders
3711 Briar Park Dr. Ste 350
Houston, TX 77042

By: _____

(signature)

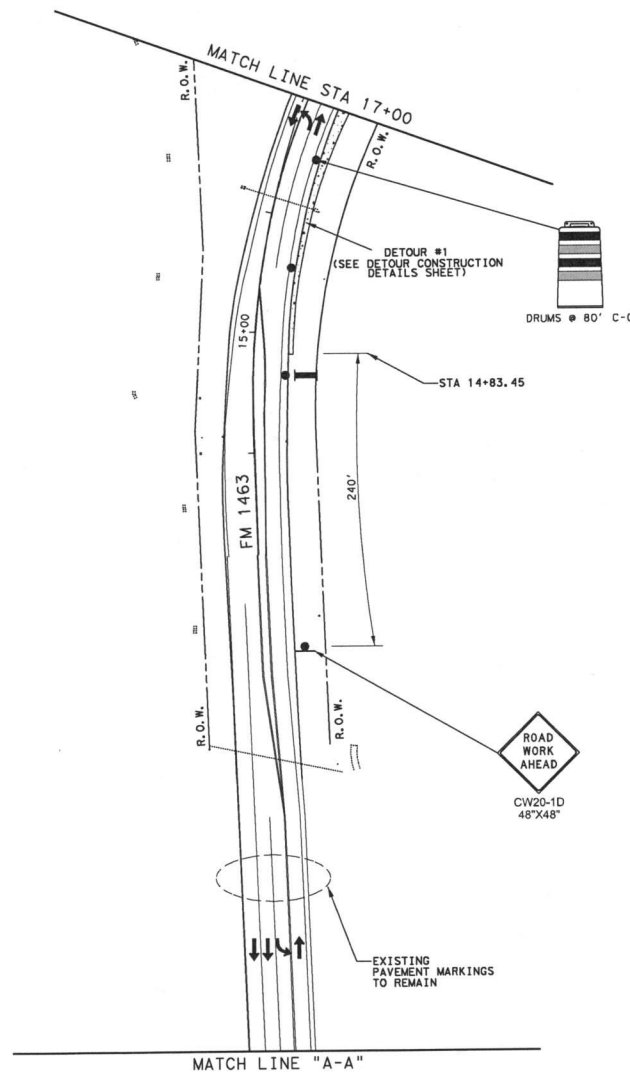
DATE: 7/03/2018

Fort Bend County Judge
Honorable Robert E. Hebert
301 Jackson St., #719
Richmond, Texas 77469

By: _____

(signature)

DATE: 7-24-2018



LEGEND	
	PERMANENT PAVEMENT CONSTRUCTED THIS PHASE
	PERMANENT PAVEMENT CONSTRUCTED ON WEEKENDS
	PERMANENT PAVEMENT CONSTRUCTED PREVIOUS PHASE
	TEMPORARY PAVEMENT CONSTRUCTED THIS PHASE
	TEMPORARY PAVEMENT CONSTRUCTED PREVIOUS PHASE
	WORK ZONE PVT MARK (NON-REM) 4" WHITE SOLID
	WORK ZONE PVT MARK (NON-REM) 8" WHITE SOLID
	WORK ZONE PVT MARK (NON-REM) 4" YELLOW SOLID
	WORK ZONE PVT MARK (NON-REM) 4" DOUBLE YELLOW SOLID
	WORK ZONE PVT MARK (NON-REM) 24" WHITE SOLID
	WORK ZONE PVT MARK (REM) WHITE 4" (DOT)
	WORK ZONE PVT MARK (REM) 4" WHITE SOLID
	WORK ZONE PVT MARK (REM) 4" YELLOW SOLID
	WORK ZONE PVT MARK (REM) 4" DOUBLE YELLOW SOLID
	LOW PROFILE CONCRETE BARRIER (LPCB)
	DIRECTION OF TRAFFIC FLOW
	TYPE III BARRICADE
	CHANNELIZING DEVICE
	CONSTRUCTION SIGN
	TRAILER MOUNTED FLASHING ARROW BOARD (TMFAP)

0 25 50 100
 SCALE: 1"=100'

NO.	DATE	REVISION	APPROVED



TEDSI INFRASTRUCTURE GROUP
TEDSI Consulting Engineers
 718 Hwy 4 South, Suite 410
 Houston, Texas 77079
 (832) 619-1900

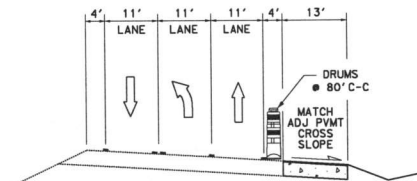
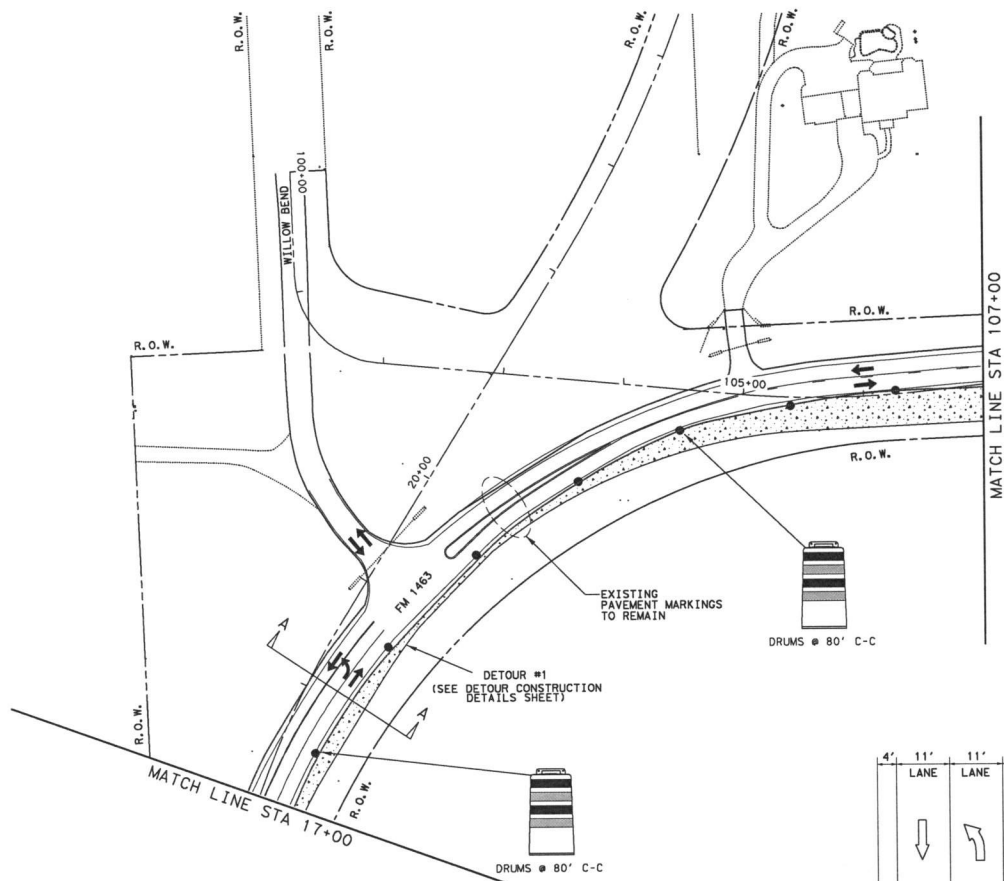
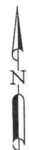
FORT BEND COUNTY, TEXAS

EHRA 10555 Westoffice Drive
 Houston, Texas 77042
 713.784.4500
 EHRAinc.com
 TREC No. 1726

CANE ISLAND PARKWAY (FM 1463 TO IH10)
TRAFFIC CONTROL PLANS
PHASE 1
STAGE 1

SHEET 2 OF 4

DN: TEDSI	PROJECT NO.	HIGHWAY NO.
CK DN: TEDSI		CANE ISLAND
DW: TEDSI	STATE	COUNTY
CK DW: TEDSI	TEXAS	FORT BEND
		SHEET NO. 18



SECTION A-A
NTS

LEGEND	
	PERMANENT PAVEMENT CONSTRUCTED THIS PHASE
	PERMANENT PAVEMENT CONSTRUCTED ON WEEKENDS
	PERMANENT PAVEMENT CONSTRUCTED PREVIOUS PHASE
	TEMPORARY PAVEMENT CONSTRUCTED THIS PHASE
	TEMPORARY PAVEMENT CONSTRUCTED PREVIOUS PHASE
	WORK ZONE PVT MARK (NON-REM) 4\"/>
	WORK ZONE PVT MARK (NON-REM) 8\"/>
	WORK ZONE PVT MARK (NON-REM) 4\" YELLOW SOLID
	WORK ZONE PVT MARK (NON-REM) 4\" DOUBLE YELLOW SOLID
	WORK ZONE PVT MARK (NON-REM) 24\" WHITE SOLID
	WORK ZONE PVT MARK (REM) WHITE 4\" (DOT)
	WORK ZONE PVT MARK (REM) 4\" WHITE SOLID
	WORK ZONE PVT MARK (REM) 4\" YELLOW SOLID
	WORK ZONE PVT MARK (REM) 4\" DOUBLE YELLOW SOLID
	LOW PROFILE CONCRETE BARRIER (LPCB)
	DIRECTION OF TRAFFIC FLOW
	TYPE III BARRICADE
	CHANNELIZING DEVICE
	CONSTRUCTION SIGN
	TRAILER MOUNTED FLASHING ARROW BOARD (TMFAP)

0 25 50 100
SCALE: 1"=100'

NO.	DATE	REVISION	APPROVED



TEDSI INFRASTRUCTURE GROUP
Consulting Engineers
718 Hwy 6 South, Suite 410
Houston, Texas 77079
PH: 281.419.1000

FORT BEND COUNTY, TEXAS

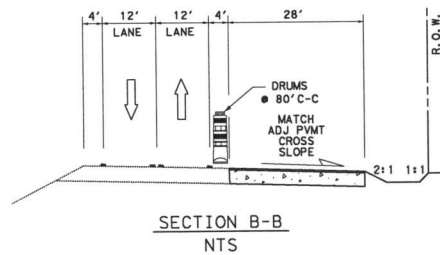
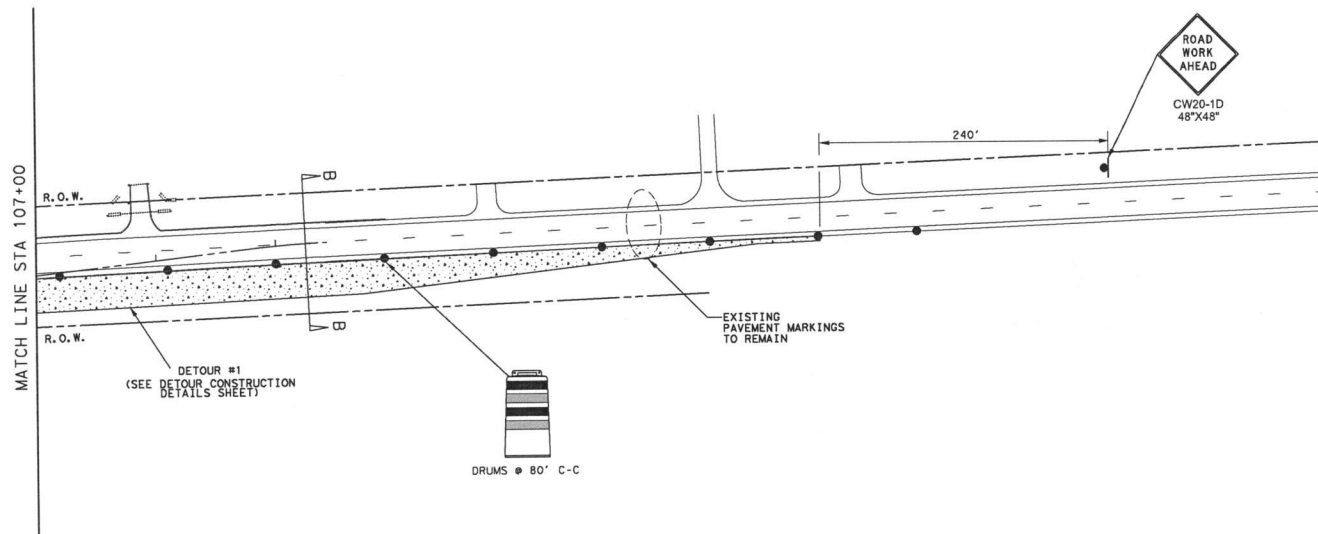
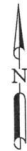
EHRA 10555 Westoffice Drive
Houston, Texas 77042
713.784.4500
EHRAinc.com
TREC No. 1726

CANE ISLAND PARKWAY (FM 1463 TO IH10)
TRAFFIC CONTROL PLANS
PHASE 1
STAGE 1

DN: TEDSI	PROJECT NO.	HIGHWAY NO.
CK DN: TEDSI	CANE ISLAND	CANE ISLAND
DW: TEDSI	STATE	COUNTY
CK DW: TEDSI	TEXAS	FORT BEND

SHEET 3 OF 4

19



LEGEND	
	PERMANENT PAVEMENT CONSTRUCTED THIS PHASE
	PERMANENT PAVEMENT CONSTRUCTED ON WEEKENDS
	PERMANENT PAVEMENT CONSTRUCTED PREVIOUS PHASE
	TEMPORARY PAVEMENT CONSTRUCTED THIS PHASE
	TEMPORARY PAVEMENT CONSTRUCTED PREVIOUS PHASE
	WORK ZONE PVT MARK (NON-REM) 4" WHITE SOLID
	WORK ZONE PVT MARK (NON-REM) 8" WHITE SOLID
	WORK ZONE PVT MARK (NON-REM) 4" YELLOW SOLID
	WORK ZONE PVT MARK (NON-REM) 4" DOUBLE YELLOW SOLID
	WORK ZONE PVT MARK (NON-REM) 24" WHITE SOLID
	WORK ZONE PVT MARK (REM) WHITE 4" (DOT)
	WORK ZONE PVT MARK (REM) 4" WHITE SOLID
	WORK ZONE PVT MARK (REM) 4" YELLOW SOLID
	WORK ZONE PVT MARK (REM) 4" DOUBLE YELLOW SOLID
	LOW PROFILE CONCRETE BARRIER (LPCB)
	DIRECTION OF TRAFFIC FLOW
	TYPE III BARRICADE
	CHANNELIZING DEVICE
	CONSTRUCTION SIGN
	TRAILER MOUNTED FLASHING ARROW BOARD (TMFAP)

0 25 50 100
SCALE: 1"=100'

NO.	DATE	REVISION	APPROVED
TEDSI INFRASTRUCTURE GROUP Consulting Engineers 19101 Katy Road, Suite 400 Houston, Texas 77058 (281) 448-1000			
FORT BEND COUNTY, TEXAS			
EHRA 10555 Westoffice Drive Houston, Texas 77042 713.784.4500 EHRAinc.com TCE No. 1726			
CANE ISLAND PARKWAY (FM 1463 TO IH10) TRAFFIC CONTROL PLANS PHASE 1 STAGE 1			
SHEET 4 OF 4			
DN: TEDSI	PROJECT NO.	HIGHWAY NO.	
CK DN: TEDSI		CANE ISLAND	
DW: TEDSI	STATE	COUNTY	SHEET NO.
CK DW: TEDSI	TEXAS	FORT BEND	20

1
2
3
4-5
6-12

GENERAL

COVER SHEET
INDEX OF SHEETS
GENERAL NOTES
PROJECT LAYOUT
TYPICAL SECTIONS

TRAFFIC CONTROL PLAN SUMMARY	
TRAFFIC CONTROL PLAN GENERAL NOTES	
TRAFFIC CONTROL PLAN SEQUENCE OF CONSTRUCTION	
TRAFFIC CONTROL PLAN ADVANCE WARNING SIGNS	
TRAFFIC CONTROL PLAN PHASE 1 STAGE 1 STEP 1	1
TRAFFIC CONTROL PLAN PHASE 1 STAGE 1 STEP 2	2
TRAFFIC CONTROL PLAN PHASE 1 STAGE 2 STEP 1	3
TRAFFIC CONTROL PLAN PHASE 1 STAGE 2 STEP 2	4
TRAFFIC CONTROL PLAN PHASE 2	
TRAFFIC CONTROL PLAN DETOURS CONSTRUCTION DETAILS	

TRAFFIC CONTROL PLAN - TCP (2-1)-12
TRAFFIC CONTROL PLAN - TCP (2-3)-12
TRAFFIC CONTROL PLAN - TCP (3-1)-13
TRAFFIC CONTROL PLAN - TCP (3-3)-14
BARRICADE AND CONSTRUCT - BC (11-14) - BC (12)-14
TRAFFIC SIGNAL WORK TYPICAL DETAILS - WZ (BTS)-11-13
TRAFFIC SIGNAL WORK BARRICADES AND SIGNS - WZ (BTS)-2-13
WORK ZONE SHORT TERM PAVEMENT MARKINGS - WZ (STPM)-13
LOW PROFILE CONCRETE BARRIER - LPCB-13 (TY1)
LOW PROFILE CONCRETE BARRIER - LPCB-13 (TY2)
WORKSHEET FOR EDGE CONDITION TREATMENT TYPES
PRIORITY SIGN DETAILS

SURVEY CONTROL MAP
HORIZONTAL ALIGNMENT DATA
PLAN & PROFILE & "A"
PLAN & PROFILE & "B"
PLAN & PROFILE & "C"
PLAN & PROFILE & "D"
SUPERELEVATION DETAILS
INTERSECTION DETAILS

JOINTED REINFORCED CONCRETE PAVEMENT DETAILS - JRCP(HOU)
CONCRETE PAVING DETAILS JOINT SEALS - JS-14
CONCRETE PAVEMENT JUNCTURES - CPJ(HOU)
DRIVEWAY DETAILS - DO(HOU)
CONCRETE CURB AND DIRECTIONAL ISLAND DETAILS - CC & DID(HOU)
CONCRETE CURB AND CURB AND BUTT - CCB&B - CCCC-12
METAL BEAM GUARD FENCE - GF(31)-14
METAL BEAM GUARD FENCE (DOWNSTREAM ANCHOR TERMINAL) - GF(31)DAT-14
METAL BEAM GUARD FENCE TRANSITION
(THRIR BEAM TRANSITION) - GF(31)TR-14
MOW STRIP - MS(HOU)
SINGLE GUARDRAIL TERMINAL(SKT 31)(WOOD POST) - SGT(8)31-14
SINGLE GUARDRAIL TERMINAL(SKT 31)(STEEL POST) - SGT(8S)31-14
SINGLE GUARDRAIL TERMINAL(X-LITE)(STEEL POST) - SGT(8S)31-14
BRIDGE END DETAILS - BED-14
FORT BEND COUNTY MISCELLANEOUS DETAILS

99-100

DRAINAGE STANDARDS

CURB INLET TY C - HIL-C (HOU)
 INLET TYPE A - HIL-A (HOU)
 INLET TYPE AD & AAD - HIL-AD/AAD (HOU)
 MANHOLES TYPES A & B - MH-A/B (HOU)
 MISCELLANEOUS SEWER DETAILS - MSD (HOU)
 GUTTER DEPRESSION DETAILS FOR CURB INLETS - GD (HOU)
 CROWNED SADDLE CATCH BASINS - CSB (HOU)
 12-PARALLEL DRAIN - PSET-SP
 PRECAST SPAN BOXES - SCB (HOU)
 EXCAVATION & BACKFILL DIAGRAMS - EMBD (HOU)
 HFCFD CONCRETE CHANNEL LINING DETAILS
 HFCFD ARTICULATING CONCRETE BLOCK DETAILS
 TYPICAL STORM DETAIL FOR 12-PARALLEL DRAIN
 TYPICAL BENT DETAIL FOR CGMP OUTFALL
 TYPICAL BEDDING AND BACKFILL DETAIL FOR CGMP OUTFALL

PROTECTIVE SLAB FOR EXISTING PIPELINES
IN HIGH COMPRESSIVE STRESS APPLICATIONS (KINDER MORGAN)

BRIDGE LAYOUT
ESTIMATED QUANTITIES AND BEARING SEAT ELEVATIONS
ABUTMENT NO. 1 AND 7
ABUTMENT DETAILS
BENT NO. 2 THRU 6
BENT DETAILS
GIRDER LAYOUT
SLAB DETAILS
PRESTRESSED CONCRETE I-GIRDER DESIGNS
(NON-STANDARD SPANS) - IGND

PRESTRESSED CONCRETE I-GIRDER DETAILS - IGD
ELASTOMERIC BEARING AND GIRDER END DETAILS - IGB
MISCELLANEOUS SLAB DETAILS - IGM
CONTINUOUS SLAB DETAILS - IGC
THICKENED SLAB END DETAILS - IGT
MINIMUM ERECTION AND BRACING REQUIREMENTS - MEBR(C)
PRESTRESSED CONCRETE CURB DETAILS - PCB
PRESTRESSED CONCRETE PANEL FABRICATION DETAILS - PCP-FAB
PERMANENT METAL DECK FORMS - PMDF
SEALED EXPANSION JOINT (TYPE A) - SEJ-A
TRAFFIC RAIL - TYPE C23
COMMON STABILIZED ABUTMENT BACKFILL - CSAB
CEMENT FOUNDATION DETAILS - FD
BRIDGE APPROACH SLAB - BAS-C
CONCRETE RIPRAP AND SHOULDER DRAINS - CRR
BRIDGE RAISED SIDEWALK AND MEDIAN DETAILS - BRSM

PAVEMENT MARKING SUMMARY
SIGNING AND PAVEMENT MARKINGS
SUMMARY OF SMALL SIGNS

- * TYPICAL STANDARD PAVEMENT MARKINGS - PM(11)-12 to PM(3)-12
- * PAVEMENT MARKINGS (WORDS, ARROWS & SYMBOLS) - PM(WA3)-07(HOU)
- * TYPICAL SIGN REQUIREMENTS - TSR(11)-13 to TSR(5)-15
- * REGULATORY SIGNS (LANE USE CONTROL) - R(LUC)-11-04(HOU)
- * DELINEATOR AND OBJECT MARKERS - D(OM)(11)-15
- * DELINEATOR AND OBJECT MARKERS - D(OM)(12)-15
- * DELINEATOR AND OBJECT MARKERS - D(OM)(13)-15
- * DELINEATOR AND OBJECT MARKERS - D(OM)(14)-15
- * DELINEATOR AND OBJECT MARKERS - D(OM)(15)-15
- * DELINEATOR AND OBJECT MARKERS - D(OM)(16)-15
- * DELINEATOR AND OBJECT MARKERS - D(OM)(17A)-15
- * SIGN MOUNTING DETAILS - GENERAL NOTES/DETAILS - SMD(GEN)-08
- * SIGN MOUNTING DETAILS - TRIANGULAR SLIPSAE SYSTEM - SMD(SLIP)-11-08 to SMD(SLIP)-3-08

183
184
185-186
187

TRAFFIC SIGNAL DETAILS

TRAFFIC SIGNAL SUMMARY
TRAFFIC SIGNAL NOTES
TRAFFIC SIGNAL LAYOUT
TRAFFIC SIGNAL LAYOUT ANCHOR BOLT DIAGRAM

CONTROLLER FOUNDATION DETAIL - SD/SCFD(HOU)
 SIGNAL DETAILS/STANDARDS SIGNAL HEAD SPAN WIRE
 MOUNT DETAILS - SHS/RMG(HOU)
 OVERHEAD STREET WAREHOUSE MOUNTING DETAILS - OSHS/AM(HOU)
 SIGNAL DETAILS/STANDARDS CONSTRUCTION DETAILS
 FOR POLE MOUNTED (APS) PEDESTRIAN SIGNALS - C2/PM(APS)(HOU)
 TRAFFIC SIGNAL SUPPORT STRUCTURES - TRAFFIC SIGNAL ASSEMBLIES
 (100 MPH WIND ZONE) - 100(11)-12 TO SP-100(11)-12
 TRAFFIC SIGNAL POLE FOUNDATIONS - TS-FD-12
 STANDARD ASSEMBLY DRAWINGS FOR LUMINAIRE SUPPORT
 STRUCTURES - LUM-A
 CLAMP ON FITTING ASSEMBLY FOR LUMINAIRE MAST ARM - CFA-12
 ROADWAY ILLUMINATION DETAILS - FIXTURES
 RID(LUM)-01 TO RID(LUM)-07
 ELECTRICAL DETAILS - E(LUM)-14 TO E(LUM)-17
 PEDESTRIAN FACILITIES CURB BUMP - PED-12A

STORM WATER POLLUTION PREVENTION PLAN

TEMP EROSION, CONTROL MEASURES
(FENCE & VERTICAL TRACKING) - EC(1)-16
TEMP EROSION, CONTROL MEASURES (CONSTRUCTION EXITS) - EC(3)-16
EROSION CONTROL LOG - ECL-12(HOU)

5	6/29/17	ADDED ACB DETAIL	F. SIGNORELLI
6	10/03/17	ADDED PRECAST BOX DETAIL	F. SIGNORELLI
13	3/29/18	ADDED PHASE 1 STAGE 1 STEP 2 REVISED DETOUR GEOMETRY	F. SIGNORELLI
NO.	DATE	REVISION	APPROVED



Paul Signaletti 3-29-18

FORT BEND COUNTY, TEXAS



10555 Westoffice Drive
Houston, Texas 77042
713.784.4500
EHRAinc.com
TBE No. F-726

CANE ISLAND PARKWAY (FM 1463 TO IH10)

INDEX OF SHEETS

SHEET 1 OF 1

DN:	FJS	PROJECT NO.		HIGHWAY NO.
CK DN:	SS			CANE ISLAND
DW:	FJS	STATE	COUNTY	SHEET NO.
CK DW:	SS	TEXAS	FORT BEND	2

...VFront Matter\SCI-INDEX.dgn

DATE: 3/25/2008 4:54:22 PM
 FILE: F:\B2\09-S\Drawings\CDOT\Can Island Parkway\TCPTCP SUMMARY.dgn

TRAFFIC CONTROL SUMMARY OVERALL							
ITEM CODE	DESCRIPTION	UNIT	TOTAL	PHASE 1			
				STAGE 1		STAGE 2	
				STEP 1	STEP 2	STEP 1	STEP 2
0502-6001	BARRICADES, SIGNS AND TRAFFIC HANDLING	MO	6				
0508-6001	CONSTRUCTING DETOURS	SY	5287	1422	3610	535	
0512-6009	PORT CTB (FUR & INST)(LOW PROF)(TY 1)	LF	1420			1120	300
0512-6010	PORT CTB (FUR & INST)(LOW PROF)(TY 2)	LF	120			120	
0512-6033	PORT CTB (MOVE)(LOW PROF)(TY 1)	LF	1720				560
0512-6034	PORT CTB (MOVE)(LOW PROF)(TY 2)	LF	120				40
0512-6057	PORT CTB (REMOVE)(LOW PROF)(TY 1)	LF	1420				1420
0512-6058	PORT CTB (REMOVE)(LOW PROF)(TY 2)	LF	120				120
0662-6004	WK ZN PAV MRK NON-REMOV (W)4"(SLD)	LF	6413			3185	3228
0662-6012	WK ZN PAV MRK NON-REMOV (W)8"(SLD)	LF	108				108
0662-6016	WK ZN PAV MRK NON-REMOV (W)24"(SLD)	LF	55				55
0662-6034	WK ZN PAV MRK NON-REMOV (Y)4"(SLD)	LF	6017			2961	3056
0662-6061	WK ZN PAV MRK REMOV (W)4"(DOT)	LF	90				90
0662-6063	WK ZN PAV MRK REMOV (W)4"(SLD)	LF	2379			992	1387
0662-6095	WK ZN PAV MRK REMOV (Y)4"(SLD)	LF	3435			1591	1844
0662-6111	WK ZN PAV MRK SHT TERM TAB(TY 1) Y-2	EA	300		300		
0677-6001	ELIM EXT PAV MRK & MRKS (4")	LF	6549		6549		
0677-6003	ELIM EXT PAV MRK & MRKS (8")	LF	641		641		
0677-6007	ELIM EXT PAV MRK & MRKS (24")	LF	288		275		13
0677-6008	ELIM EXT PAV MRK & MRKS (ARROW)	EA	3		3		
0677-6012	ELIM EXT PAV MRK & MRKS (WORD)	EA	3		3		
0681-6001	TEMP TRAF SIGNALS	EA	1				1

10	1/18/18	ADDED ADDITIONAL LOW PROFILE PORTABLE CTB	MRH
13	3/29/18	ADDED PHASE 1 STAGE 1 STEP 2 REVISED DETOUR GEOMETRY	F. SIONORELLI
NO.	DATE	REVISION	APPROVED

FORT BEND COUNTY, TEXAS

EHRA
 10555 Westoffice Drive
 Houston, Texas 77042
 713.784.4500
 EHRAinc.com
 10/16/12

**CANE ISLAND PARKWAY (FM 1463 TO IH10)
 TRAFFIC CONTROL PLAN
 SUMMARY**

SHEET 1 OF 1			
DN: EHRA	PROJECT NO.	HIGHWAY NO.	
CK DN: EHRA		CANE ISLAND	
DW: EHRA	STATE	COUNTY	SHEET NO.
CK DW: EHRA	TEXAS	FORT BEND	13

PHASE 1 STAGE 1 STEP 1

1. RELOCATE UTILITIES IN CONFLICT WITH THE TRAFFIC CONTROL BEFORE BEGIN OF WORK. UTILITIES TO BE RELOCATED INCLUDE THE POWER LINE/POLES IN THE SOUTH SIDE OF FM 1463 ALONG THE EAST LEG
2. CONSTRUCT TEMPORARY ASPHALT DETOUR #1 MATCHING EXISTING SLOPE AS SHOWN IN THE PLANS
3. RE-ALIGN AND RESHAPE ROAD SIDE DITCHES ALONG RIGHT SIDE OF FM 1463 TO MAINTAIN POSITIVE DRAINAGE

PHASE 1 STAGE 1 STEP 2

1. RELOCATE UTILITIES IN CONFLICT WITH THE TRAFFIC CONTROL BEFORE BEGIN OF WORK. UTILITIES TO BE RELOCATED INCLUDE THE POWER LINE/POLES IN THE SOUTH SIDE OF FM 1463 ALONG THE EAST LEG
2. (FRIDAY 9PM) IMPLEMENT FLAGGER TCP AS SHOWN IN THE PLANS.
3. CONSTRUCT TEMPORARY ASPHALT DETOUR #1 (ASPHALT STABILIZED BASE AND HMA (LEVEL-UP) TO CHANGE THE SUPERELEVATION TO 6% MINIMUM AS SHOWN IN THE PLANS. PROVIDE SUPERELEVATION TRANSITIONS OF AT LEAST 170' ON BOTH SIDES.
4. RE-ALIGN AND RESHAPE ROAD SIDE DITCHES ALONG RIGHT SIDE OF FM 1463 TO MAINTAIN POSITIVE DRAINAGE
5. TAB CENTER YELLOW STRIPE ACCORDING TO PHASE 1 STAGE 2 STEP 1. PLACE OPPOSING TRAFFIC LANE DIVIDERS AT 80' SPACING (SHOWN ON BC(9)-14). PLACE DRUMS MARKERS ALONG EDGELINES.
6. OPEN DETOUR TO TRAFFIC BY 9AM ON SATURDAY
7. (SATURDAY 9PM) IMPLEMENT FLAGGER TCP AS SHOWN IN THE PLANS.
8. CONSTRUCT TEMPORARY ASPHALT DETOUR #1 HMA (SURFACE) TO CHANGE THE SUPERELEVATION TO 6% MINIMUM AS SHOWN IN THE PLANS. PROVIDE SUPERELEVATION TRANSITIONS OF AT LEAST 170' ON BOTH SIDES.
9. RE-ALIGN AND RESHAPE ROAD SIDE DITCHES ALONG RIGHT SIDE OF FM 1463 TO MAINTAIN POSITIVE DRAINAGE
10. OPEN DETOUR TO TRAFFIC BY 9AM ON SUNDAY

PHASE 1 STAGE 2 STEP 1

1. SHIFT TRAFFIC ALONG FM 1463 TO USE RECENTLY CONSTRUCTED TEMPORARY ASPHALT DETOUR #1 AS SHOWN IN THE PLANS
2. INSTALL LOW PROFILE CONCRETE BARRIERS (LPCB) AS SHOWN IN THE PLANS
3. CONSTRUCT SOUTH LEG OF FM 1463 FROM STA 13+16 TO STA 18+70.
4. CONSTRUCT PAVEMENT SECTION UP TO 1.5" HMA (LEVEL-UP). FINAL 1.5" HMA TO BE COMPLETED DURING PHASE 3
5. CONSTRUCT TEMPORARY DETOUR #2 EXTENDING WILLOW BEND TO THE SOUTH TO MATCH ELEVATION OF NEWLY CONSTRUCTED SOUTH LEG OF FM 1463
6. INSTALL 24" DRAINAGE PIPE UNDERNEATH DETOUR #2 TO MAINTAIN POSITIVE DRAINAGE AS SHOWN IN THE PLANS

PHASE 1 STAGE 2 STEP 2

1. MAINTAIN TRAFFIC USING FM 1463 AND DETOUR #1
2. SHIFT TRAFFIC ON WILLOW BEND TO RECENTLY CONSTRUCTED EXTENSION AND OBLITERATE SEGMENT OF WILLOW BEND NOT USED ANYMORE
3. INSTALL/RELOCATE LPCB AS SHOWN IN THE PLANS
4. CONSTRUCT INTERSECTION BEGINNING FROM WILLOW BEND STA 101+62 TO FM 1463 EAST LEG STA 109+42 AND FROM FM 1463 SOUTH LEG STA 18+70 TO CANE ISLAND STA 22+10
5. INSTALL 24" DRAINAGE PIPES UNDERNEATH NEWLY CONSTRUCTED INTERSECTION AS SHOWN IN THE PLANS TO MAINTAIN POSITIVE DRAINAGE
6. DURING WEEKENDS CONSTRUCT WILLOW BEND FROM STA 100+67 TO STA 101+62 AND ACCESS ROAD AS SHOWN IN THE PLANS. TRAFFIC ALONG WILLOW BEND AND THE ACCESS ROAD TO BE MAINTAINED OPEN AT ALL TIMES USING FLAGGERS OPERATION
7. DURING A WEEKEND CONSTRUCT DRIVEWAYS #1 AND #2. ACCESS TO RESIDENCES TO BE MAINTAINED OPEN AT ALL TIMES
8. REMOVE AND REINSTALL RCP AND S.E.T UNDERNEATH DRIVEWAY #1
9. CONSTRUCT UP TO 1.5" HMA (LEVEL-UP). FINAL 1.5" HMA TO BE COMPLETED DURING PHASE 3
10. INSTALL TRAFFIC SIGNAL AT THE INTERSECTION OF FM 1463 WITH WILLOW BEND

PHASE 2

1. SHIFT TRAFFIC TO NEWLY CONSTRUCTED FM 1463'S EAST AND SOUTH LEGS
2. ADJUST TRAFFIC SIGNAL AT FM 1463 AT N. FIRETHORNE RD AS NEEDED FOR THIS PHASE OF CONSTRUCTION
3. OBLITERATE DETOURS #1 AND #2 AND SEGMENT OF FM 1463 NOT TO BE USED ANYMORE
4. CONSTRUCT EAST SIDE FM 1463 SOUTH LEG FROM STA 13+16 TO STA 18+70
5. CONSTRUCT SOUTH SIDE OF FM 1463 EAST LEG FROM STA 103+97 TO STA 109+42
6. CONSTRUCTION UP TO 1.5" HMA (LEVEL-UP). FINAL 1.5" HMA TO BE COMPLETED DURING PHASE 3

PHASE 3

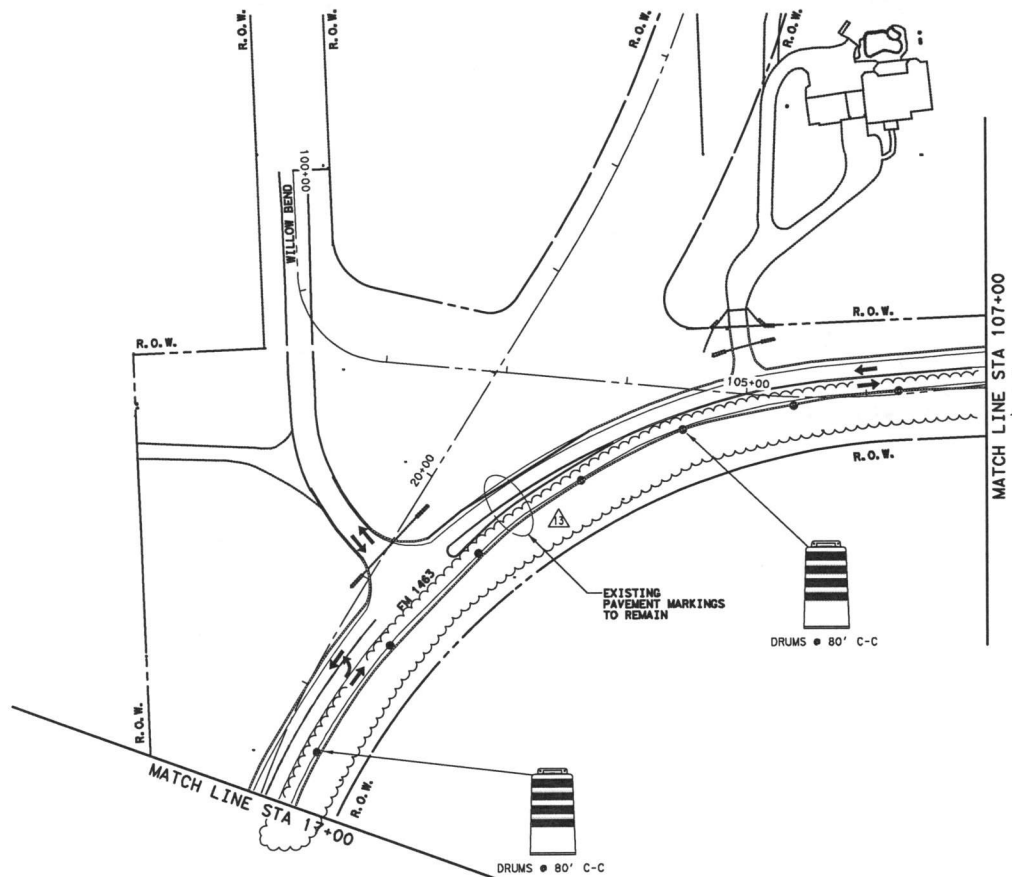
1. ADJUST TRAFFIC SIGNAL HEADS FOR PERMANENT TRAFFIC CONDITIONS
2. CONSTRUCT FINAL 1.5" HMA AND INSTALL PERMANENT PAVEMENT MARKINGS USING MOBILE OPERATION



Earl Signmark 3-29-18
 13 FOR CHANGES ONLY

13	3/29/18	Added Phase 1 Stage 2 Step 2 Updated detour 1 geometry	F. Signorelli
NO. DATE REVISION APPROVED			
TEDSI INFRASTRUCTURE GROUP Consulting Engineers 78 Hwy 6 South, Suite 400 Houston, Texas 77075 (281) 832-8900			
FORT BEND COUNTY, TEXAS			
10555 Westoffice Drive Houston, Texas 77042 713.784.4500 EHRAinc.com TIRE No. 1735			
CANE ISLAND PARKWAY (FM 1463 TO IH10) SEQUENCE OF CONSTRUCTION			
SHEET 1 OF 1			
DN: TEDSI	PROJECT NO.	HIGHWAY NO.	
CK DN: TEDSI		CANE ISLAND	
DN: TEDSI	STATE	COUNTY	SHEET NO.
CK DN: TEDSI	TEXAS	FORT BEND	15

DATE: 3/29/2008
 FILE: F:\B\109-5\Drawings\CAD\Draw\Bentley\Drawn\TCTP\PHD\Sheet\Sheet.dgn



LEGEND	
	PERMANENT PAVEMENT CONSTRUCTED THIS PHASE
	PERMANENT PAVEMENT CONSTRUCTED ON WEEKENDS
	PERMANENT PAVEMENT CONSTRUCTED PREVIOUS PHASE
	TEMPORARY PAVEMENT CONSTRUCTED THIS PHASE
	TEMPORARY PAVEMENT CONSTRUCTED PREVIOUS PHASE
	WORK ZONE PVMT MARK (NON-REM) 4" WHITE SOLID
	WORK ZONE PVMT MARK (NON-REM) 8" WHITE SOLID
	WORK ZONE PVMT MARK (NON-REM) 4" YELLOW SOLID
	WORK ZONE PVMT MARK (NON-REM) 4" DOUBLE YELLOW SOLID
	WORK ZONE PVMT MARK (NON-REM) 24" WHITE SOLID
	WORK ZONE PVMT MARK (REM) WHITE 4" (DOT)
	WORK ZONE PVMT MARK (REM) 4" WHITE SOLID
	WORK ZONE PVMT MARK (REM) 4" YELLOW SOLID
	WORK ZONE PVMT MARK (REM) 4" DOUBLE YELLOW SOLID
	DIRECTION OF TRAFFIC FLOW
	TYPE III BARRICADE
	CHANNELIZING DEVICE
	CONSTRUCTION SIGN
	TRAILER MOUNTED FLASHING ARROW BOARD (TMFAP)

0 25 50 100
 SCALE: 1"=100'

13	1/2/18	ADDED PHASE 1 STAGE 1 STEP 2 REVISED DETOUR GEOMETRY	F. SIGNORELLI
NO.	DATE	REVISION	APPROVED



Earl Signorelli 3-29-18

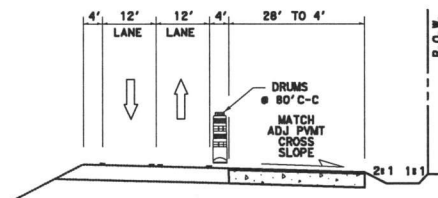
FORT BEND COUNTY, TEXAS



10555 Westoffice Drive
 Houston, Texas 77042
 713.784.4500
 EHRAinc.com
 T&E No. P726

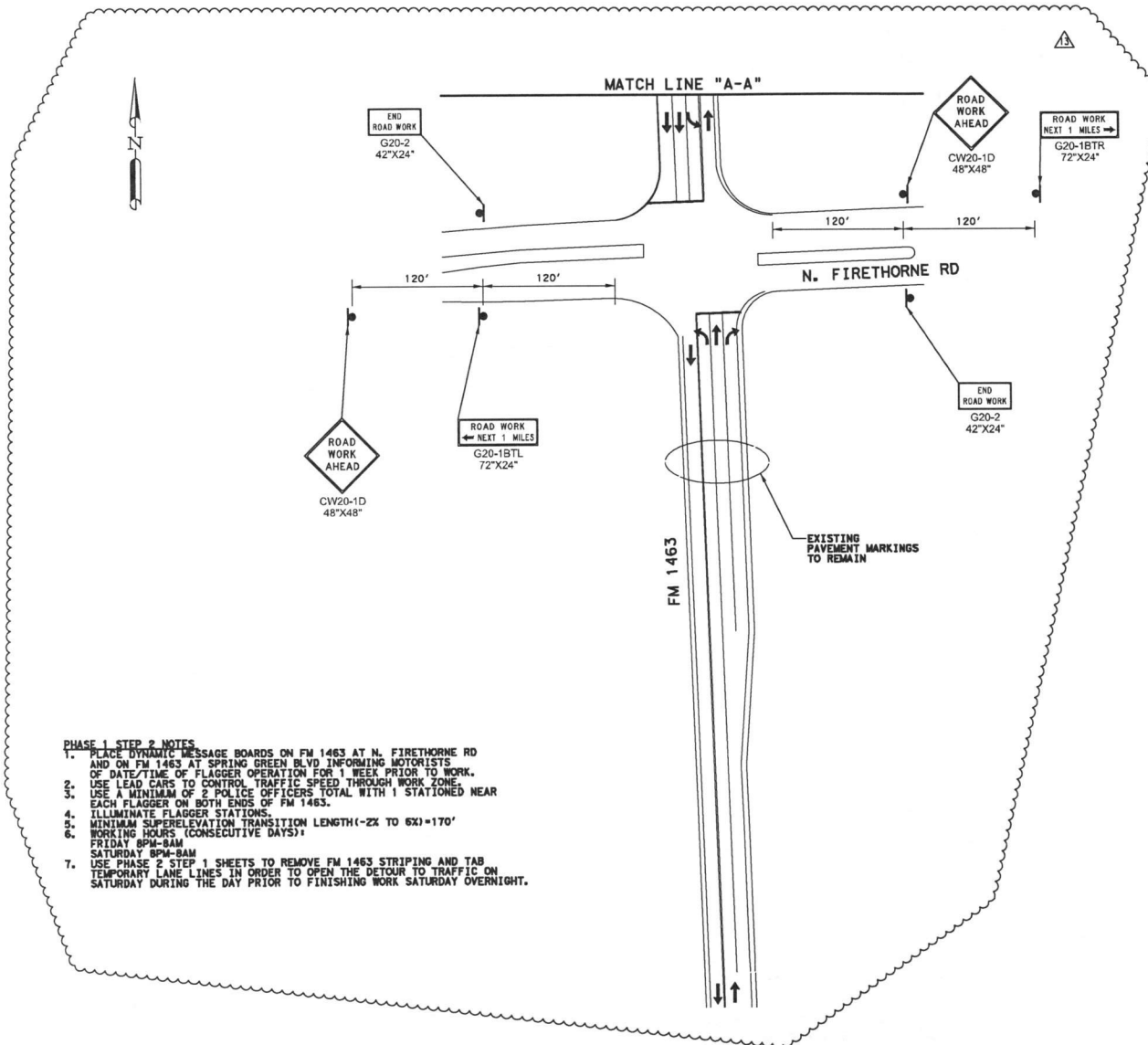
CANE ISLAND PARKWAY (FM 1463 TO IH10)
 TRAFFIC CONTROL PLANS
 PHASE 1
 STAGE 1 STEP 1

DN: EHRA	PROJECT NO.	HIGHWAY NO.
CK DN: EHRA		CANE ISLAND
DW: EHRA	STATE	COUNTY
CK DW: EHRA	TEXAS	FORT BEND
		SHEET NO.
		19



DATE: 3/29/2018 4:24:28 PM
FILE: P:\N2\019-5\Drawings\CAD\Cane Island Parkway\TCP PHOI Staged Stedl.dgn

DATE: 3/29/2018
 FILE: P:\B\09-25\road\signs\CAD\Draw Tables\Traffic\TCATCP PH01 Stage 1 Step 2.dgn



- PHASE 1 STEP 2 NOTES**
1. PLACE DYNAMIC MESSAGE BOARDS ON FM 1463 AT N. FIRETHORNE RD AND ON FM 1463 AT SPRING GREEN BLVD INFORMING MOTORISTS OF DATE/TIME OF FLAGGER OPERATION FOR 1 WEEK PRIOR TO WORK.
 2. USE LEAD CARS TO CONTROL TRAFFIC SPEED THROUGH WORK ZONE.
 3. USE A MINIMUM OF 2 POLICE OFFICERS TOTAL WITH 1 STATIONED NEAR EACH FLAGGER ON BOTH ENDS OF FM 1463.
 4. ILLUMINATE FLAGGER STATIONS.
 5. MINIMUM SUPERELEVATION TRANSITION LENGTH (-2X TO 6X)=170'
 6. WORKING HOURS (CONSECUTIVE DAYS):
 FRIDAY 8PM-8AM
 SATURDAY 8PM-8AM
 7. USE PHASE 2 STEP 1 SHEETS TO REMOVE FM 1463 STRIPING AND TAB TEMPORARY LANE LINES IN ORDER TO OPEN THE DETOUR TO TRAFFIC ON SATURDAY DURING THE DAY PRIOR TO FINISHING WORK SATURDAY OVERNIGHT.

LEGEND	
	PERMANENT PAVEMENT CONSTRUCTED THIS PHASE
	PERMANENT PAVEMENT CONSTRUCTED ON WEEKENDS
	PERMANENT PAVEMENT CONSTRUCTED PREVIOUS PHASE
	TEMPORARY PAVEMENT CONSTRUCTED THIS PHASE
	TEMPORARY PAVEMENT CONSTRUCTED PREVIOUS PHASE
	WORK ZONE PVT MARK (NON-REM) 4" WHITE SOLID
	WORK ZONE PVT MARK (NON-REM) 8" WHITE SOLID
	WORK ZONE PVT MARK (NON-REM) 4" YELLOW SOLID
	WORK ZONE PVT MARK (NON-REM) 4" DOUBLE YELLOW SOLID
	WORK ZONE PVT MARK (NON-REM) 24" WHITE SOLID
	WORK ZONE PVT MARK (REM) WHITE 4" (DOT)
	WORK ZONE PVT MARK (REM) 4" WHITE SOLID
	WORK ZONE PVT MARK (REM) 4" YELLOW SOLID
	WORK ZONE PVT MARK (REM) 4" DOUBLE YELLOW SOLID
	LOW PROFILE CONCRETE BARRIER (LPCB)
	DIRECTION OF TRAFFIC FLOW
	TYPE III BARRICADE
	CHANNELIZING DEVICE
	CONSTRUCTION SIGN
	TRAILER MOUNTED FLASHING ARROW BOARD (TMFAP)

0 25 50 100
 SCALE: 1"=100'

13	3/29/18	ADDER PHASE 1 STAGE 1 STEP 2 REVISED DETOUR GEOMETRY	F. SIGNORELLI
NO.	DATE	REVISION	APPROVED



Frederick A. Signorelli 3-29-18

FORT BEND COUNTY, TEXAS

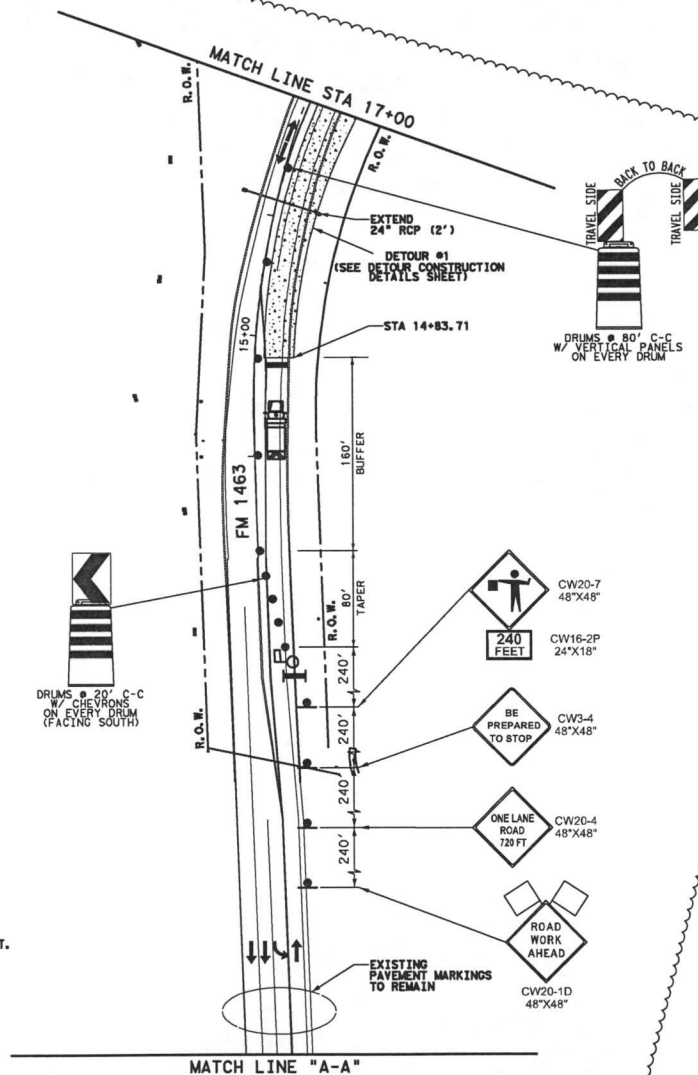
EHRA 10555 Westoffice Drive
 Houston, Texas 77042
 713.784.4500
 EHRAinc.com
 T&E No. F726

CANE ISLAND PARKWAY (FM 1463 TO IH10)
TRAFFIC CONTROL PLANS
PHASE 1
STAGE 1 STEP 2

SHEET 1 OF 4			
DN: EHRA	PROJECT NO.	HIGHWAY NO.	
CK DN: EHRA		CANE ISLAND	
DW: EHRA	STATE	COUNTY	SHEET NO.
CK DW: EHRA	TEXAS	FORT BEND	20A

DATE: 3/29/2018
 4:54:30 PM
 FILE: F:\BID-09-5\Drawings\CD\CD-Cane Island Parkway\TOP PHD Stage Sheet.dgn

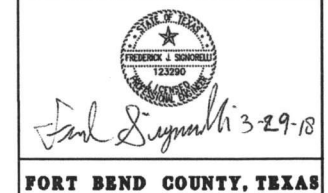
- PHASE 1 STEP 2 NOTES**
1. PLACE DYNAMIC MESSAGE BOARDS ON FM 1463 AT N. FIRETHORNE RD AND ON FM 1463 AT SPRING GREEN BLVD INFORMING MOTORISTS OF DATE/TIME OF FLAGGER OPERATION FOR 1 WEEK PRIOR TO WORK.
 2. USE LEAD CARS TO CONTROL TRAFFIC SPEED THROUGH WORK ZONE.
 3. USE A MINIMUM OF 2 POLICE OFFICERS TOTAL WITH 1 STATIONED NEAR EACH FLAGGER ON BOTH ENDS OF FM 1463.
 4. ILLUMINATE FLAGGER STATIONS.
 5. MINIMUM SUPERELEVATION TRANSITION LENGTH (-2X TO 6X) = 170'
 6. WORKING HOURS (CONSECUTIVE DAYS):
 FRIDAY 8PM-8AM
 SATURDAY 8PM-8AM
 7. USE PHASE 2 STEP 1 SHEETS TO REMOVE FM 1463 STRIPING AND TAB TEMPORARY LANE LINES IN ORDER TO OPEN THE DETOUR TO TRAFFIC ON SATURDAY DURING THE DAY PRIOR TO FINISHING WORK SATURDAY OVERNIGHT.



LEGEND	
	PERMANENT PAVEMENT CONSTRUCTED THIS PHASE
	PERMANENT PAVEMENT CONSTRUCTED ON WEEKENDS
	PERMANENT PAVEMENT CONSTRUCTED PREVIOUS PHASE
	TEMPORARY PAVEMENT CONSTRUCTED THIS PHASE
	TEMPORARY PAVEMENT CONSTRUCTED PREVIOUS PHASE
	WORK ZONE PAVMT MARK (NON-REM) 4" WHITE SOLID
	WORK ZONE PAVMT MARK (NON-REM) 8" WHITE SOLID
	WORK ZONE PAVMT MARK (NON-REM) 4" YELLOW SOLID
	WORK ZONE PAVMT MARK (NON-REM) 4" DOUBLE YELLOW SOLID
	WORK ZONE PAVMT MARK (NON-REM) 24" WHITE SOLID
	WORK ZONE PAVMT MARK (REM) WHITE 4" (DOT)
	WORK ZONE PAVMT MARK (REM) 4" WHITE SOLID
	WORK ZONE PAVMT MARK (REM) 4" YELLOW SOLID
	WORK ZONE PAVMT MARK (REM) 4" DOUBLE YELLOW SOLID
	LOW PROFILE CONCRETE BARRIER (LPCB)
	DIRECTION OF TRAFFIC FLOW
	TYPE III BARRICADE
	CHANNELIZING DEVICE
	CONSTRUCTION SIGN
	TRAILER MOUNTED FLASHING ARROW BOARD (TMFAP)
	FLAGGER W/ ILLUMINATED STATION
	SHADOW VEHICLE W/ TMA & STROBE LIGHTS

0 25 50 100
 SCALE: 1"=100'

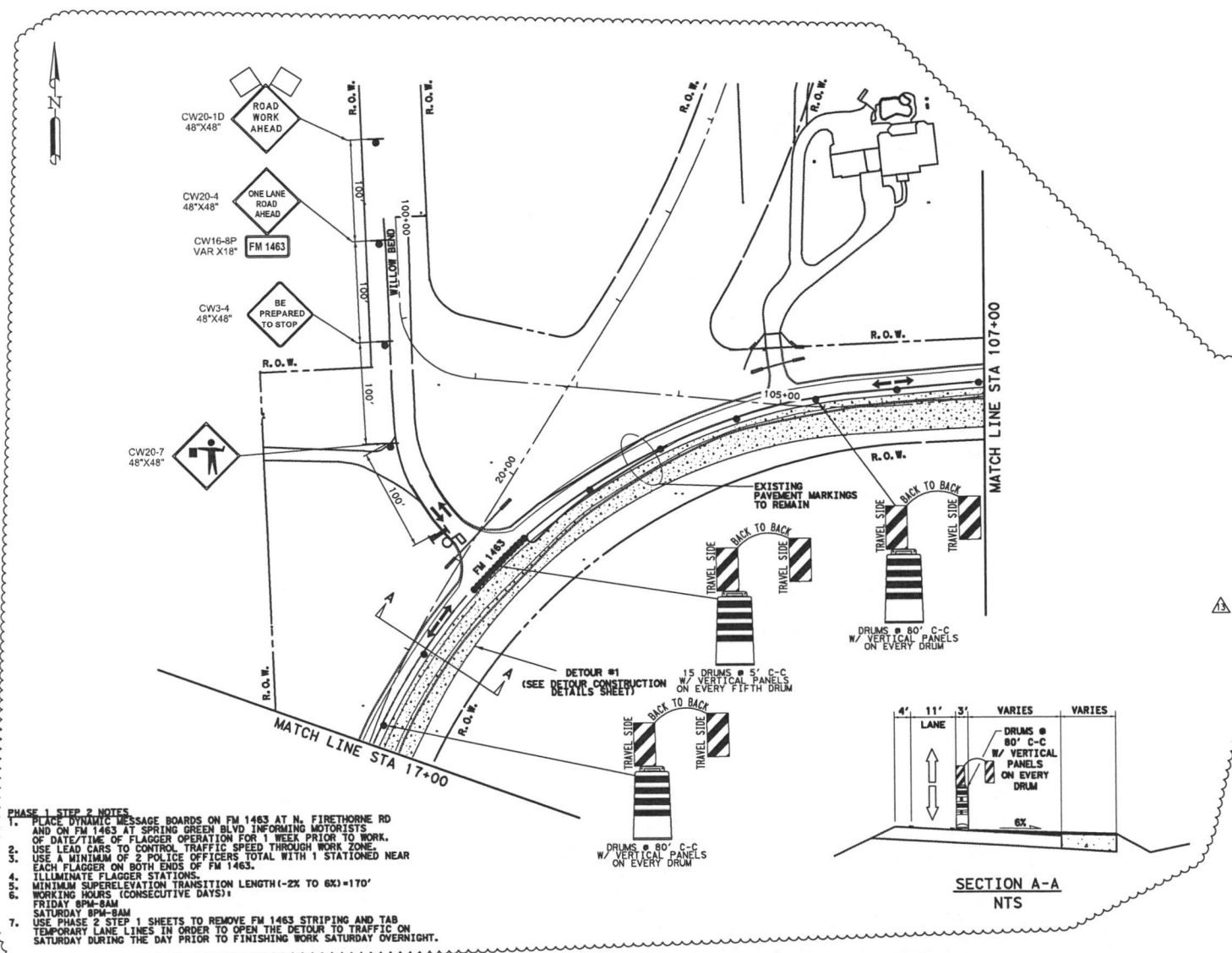
13	3/29/18	ADDED PHASE 1 STAGE 1 STEP 2 REVISED DETOUR GEOMETRY	F. SIGNORELLI
NO.	DATE	REVISION	APPROVED



EHRA 10555 Westofico Drive
 Houston, Texas 77042
 713.784.4500
 EHRAinc.com
 TPE No. F-726

CANE ISLAND PARKWAY (FM 1463 TO IH10)
TRAFFIC CONTROL PLANS
PHASE 1
STAGE 1 STEP 2

SHEET 2 OF 4			
DN: EHRA	PROJECT NO.	HIGHWAY NO.	
CK DN: EHRA		CANE ISLAND	
DN: EHRA	STATE	COUNTY	SHEET NO.
CK DN: EHRA	TEXAS	FORT BEND	208



LEGEND	
	PERMANENT PAVEMENT CONSTRUCTED THIS PHASE
	PERMANENT PAVEMENT CONSTRUCTED ON WEEKENDS
	PERMANENT PAVEMENT CONSTRUCTED PREVIOUS PHASE
	TEMPORARY PAVEMENT CONSTRUCTED THIS PHASE
	TEMPORARY PAVEMENT CONSTRUCTED PREVIOUS PHASE
A	WORK ZONE PVMT MARK (NON-REM) 4" WHITE SOLID
B	WORK ZONE PVMT MARK (NON-REM) 8" WHITE SOLID
C	WORK ZONE PVMT MARK (NON-REM) 4" YELLOW SOLID
C/C	WORK ZONE PVMT MARK (NON-REM) 4" DOUBLE YELLOW SOLID
D	WORK ZONE PVMT MARK (NON-REM) 24" WHITE SOLID
E	WORK ZONE PVMT MARK (REM) WHITE 4" (DOT)
F	WORK ZONE PVMT MARK (REM) 4" WHITE SOLID
G	WORK ZONE PVMT MARK (REM) 4" YELLOW SOLID
H/H	WORK ZONE PVMT MARK (REM) 4" DOUBLE YELLOW SOLID
	LOW PROFILE CONCRETE BARRIER (LPCB)
	DIRECTION OF TRAFFIC FLOW
	TYPE III BARRICADE
	CHANNELIZING DEVICE
	CONSTRUCTION SIGN
	TRAILER MOUNTED FLASHING ARROW BOARD (TMFAP)
	FLAGGER W/ ILLUMINATED STATION
	SHADOW VEHICLE W/ TMA & STROBE LIGHTS

0 25 50 100
 SCALE: 1"=100'

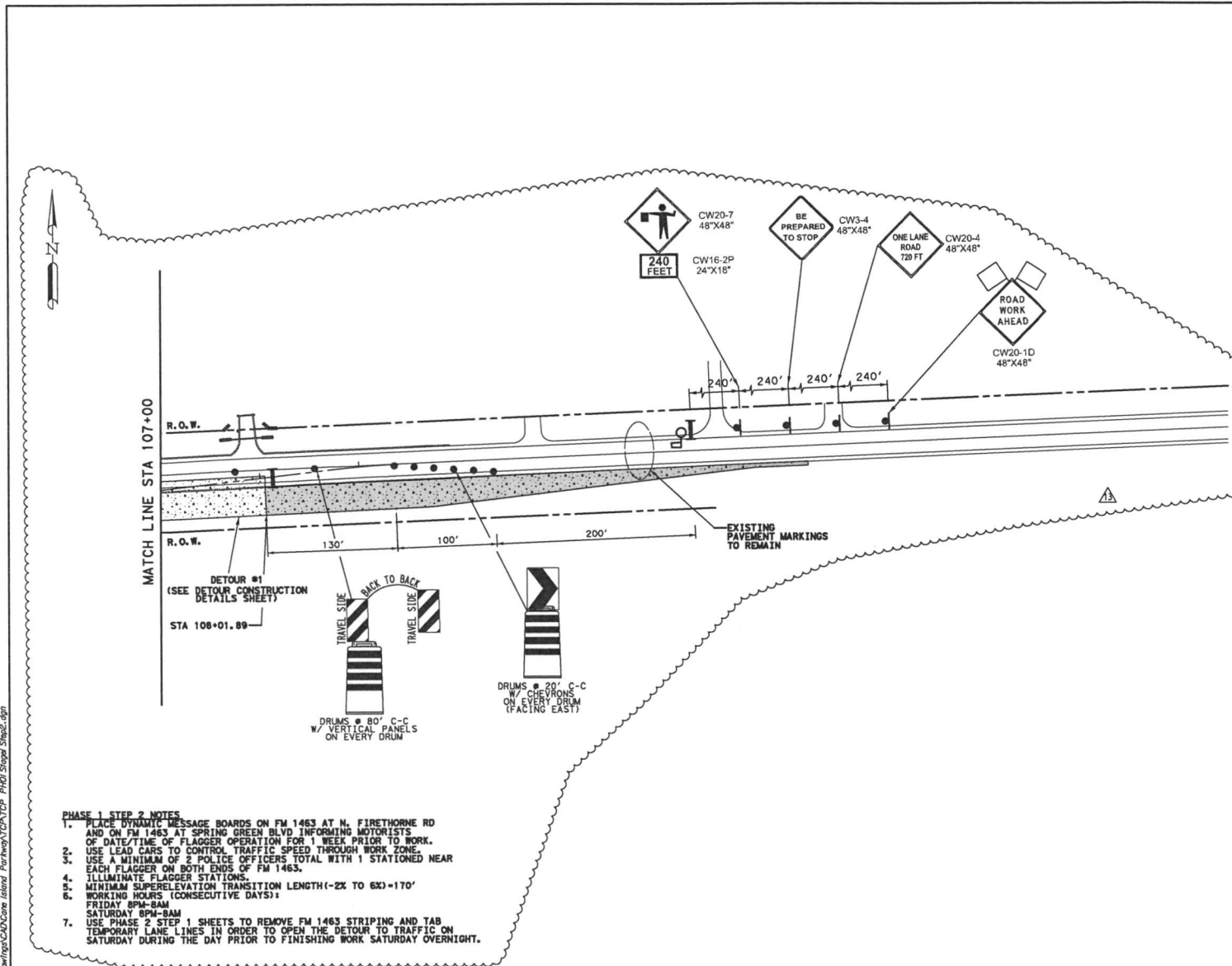
13	3/29/18	ADDED PHASE 1, STAGE 1 STEP 2 REVISED DETOUR GEOMETRY	F. SIOKRELLI
NO. DATE		REVISION	APPROVED

FORT BEND COUNTY, TEXAS
 10555 Westoffice Drive
 Houston, Texas 77042
 713.784.4500
 EHR@inc.com
 7812 No. 1736

CANE ISLAND PARKWAY (FM 1463 TO IH10)
TRAFFIC CONTROL PLANS
PHASE 1
STAGE 1 STEP 2
SHEET 3 OF 4

DN: EHR	PROJECT NO.	HIGHWAY NO.
CK DN: EHR		CANE ISLAND
DW: EHR	STATE	COUNTY
CK DW: EHR	TEXAS	FORT BEND 20C

- PHASE 1 STEP 2 NOTES**
1. PLACE DYNAMIC MESSAGE BOARDS ON FM 1463 AT N. FIRETHORNE RD AND ON FM 1463 AT SPRING GREEN BLVD INFORMING MOTORISTS OF DATE/TIME OF FLAGGER OPERATION FOR 1 WEEK PRIOR TO WORK.
 2. USE LEAD CARS TO CONTROL TRAFFIC SPEED THROUGH WORK ZONE.
 3. USE A MINIMUM OF 2 POLICE OFFICERS TOTAL WITH 1 STATIONED NEAR EACH FLAGGER ON BOTH ENDS OF FM 1463.
 4. ILLUMINATE FLAGGER STATIONS.
 5. MINIMUM SUPERELEVATION TRANSITION LENGTH (-2X TO 6X)=170'
 6. WORKING HOURS (CONSECUTIVE DAYS):
 FRIDAY 8PM-8AM
 SATURDAY 8PM-8AM
 7. USE PHASE 2 STEP 1 SHEETS TO REMOVE FM 1463 STRIPING AND TAB TEMPORARY LANE LINES IN ORDER TO OPEN THE DETOUR TO TRAFFIC ON SATURDAY DURING THE DAY PRIOR TO FINISHING WORK SATURDAY OVERNIGHT.



LEGEND	
	PERMANENT PAVEMENT CONSTRUCTED THIS PHASE
	PERMANENT PAVEMENT CONSTRUCTED ON WEEKENDS
	PERMANENT PAVEMENT CONSTRUCTED PREVIOUS PHASE
	TEMPORARY PAVEMENT CONSTRUCTED THIS PHASE
	TEMPORARY PAVEMENT CONSTRUCTED PREVIOUS PHASE
	WORK ZONE PVMT MARK (NON-REM) 4" WHITE SOLID
	WORK ZONE PVMT MARK (NON-REM) 8" WHITE SOLID
	WORK ZONE PVMT MARK (NON-REM) 4" YELLOW SOLID
	WORK ZONE PVMT MARK (NON-REM) 4" DOUBLE YELLOW SOLID
	WORK ZONE PVMT MARK (NON-REM) 24" WHITE SOLID
	WORK ZONE PVMT MARK (REM) WHITE 4" (DOT)
	WORK ZONE PVMT MARK (REM) 4" WHITE SOLID
	WORK ZONE PVMT MARK (REM) 4" YELLOW SOLID
	WORK ZONE PVMT MARK (REM) 4" DOUBLE YELLOW SOLID
	LOW PROFILE CONCRETE BARRIER (LPCB)
	DIRECTION OF TRAFFIC FLOW
	TYPE III BARRICADE
	CHANNELIZING DEVICE
	CONSTRUCTION SIGN
	TRAILER MOUNTED FLASHING ARROW BOARD (TMFAB)
	FLAGGER W/ ILLUMINATED STATION
	SHADOW VEHICLE W/ TMA & STROBE LIGHTS

0 25 50 100
 SCALE: 1"=100'

13	1/2/18	ADDED PHASE 1 STEP 2 REVISED DETOUR GEOMETRY	F. SIGNORELLI
NO.	DATE	REVISION	APPROVED

Paul Signorelli 3-29-18
FORT BEND COUNTY, TEXAS



EHRA 10555 Westoffice Drive
 Houston, Texas 77042
 713.784.4500
 EHRAinc.com
 T&E No. F220

CANE ISLAND PARKWAY (FM 1463 TO IH10)
TRAFFIC CONTROL PLANS
PHASE 1
STAGE 1 STEP 2

SHEET 4 OF 4

DN: EHRA	PROJECT NO.	HIGHWAY NO.
CK DN: EHRA		CANE ISLAND
DW: EHRA	STATE	COUNTY
CK DW: EHRA	TEXAS	FORT BEND
		SHEET NO.
		200

- PHASE 1 STEP 2 NOTES**
1. PLACE DYNAMIC MESSAGE BOARDS ON FM 1463 AT N. FIRETHORNE RD AND ON FM 1463 AT SPRING GREEN BLVD INFORMING MOTORISTS OF DATE/TIME OF FLAGGER OPERATION FOR 1 WEEK PRIOR TO WORK.
 2. USE LEAD CARS TO CONTROL TRAFFIC SPEED THROUGH WORK ZONE.
 3. USE A MINIMUM OF 2 POLICE OFFICERS TOTAL WITH 1 STATIONED NEAR EACH FLAGGER ON BOTH ENDS OF FM 1463.
 4. ILLUMINATE FLAGGER STATIONS.
 5. MINIMUM SUPERELEVATION TRANSITION LENGTH (-2% TO 6%) = 170'
 6. WORKING HOURS (CONSECUTIVE DAYS):
 FRIDAY 8PM-8AM
 SATURDAY 8PM-8AM
 7. USE PHASE 2 STEP 1 SHEETS TO REMOVE FM 1463 STRIPING AND TAB TEMPORARY LANE LINES IN ORDER TO OPEN THE DETOUR TO TRAFFIC ON SATURDAY DURING THE DAY PRIOR TO FINISHING WORK SATURDAY OVERNIGHT.

LEGEND	
	TEMPORARY PAVEMENT
	DIRECTION OF TRAFFIC FLOW



DATE: 3/29/2018 4:54:33 PM
FILE: F:\B\09-2\Drawings\CD\Draw Island Parkway\TCF\TCF Detour\Canal Notes.dgn

B DETOURLT

Beginning chain DETOURLT description

Curve Data				
Curve DETOURLT-1				
P.I. Station	3+30.21	X	2,967,625.59	Y 13,840,431.14
Delta	45° 33' 02.45"	(RT)		
Degree	10° 26' 58.05"			
Tangent	230.21			
Length	435.91			
Radius	548.31			
External	46.37			
Long Chord	424.52			
Mid. Ord.	42.75			
P.C. Station	1+00.00	X	2,967,621.56	Y 13,840,200.96
P.T. Station	5+35.91	X	2,967,792.74	Y 13,840,589.45
C.C.			2,968,169.79	Y 13,840,191.35
Back	N 1° 00' 15.69" E			
Ahead	N 46° 33' 18.14" E			
Chord Bear	N 23° 46' 46.51" E			

Curve Data				
Curve DETOURLT-2				
P.I. Station	6+93.42	X	2,967,907.09	Y 13,840,697.75
Delta	28° 55' 02.87"	(RT)		
Degree	9° 23' 02.20"			
Tangent	157.50			
Length	308.28			
Radius	610.57			
External	19.99			
Long Chord	305.02			
Mid. Ord.	19.35			
P.C. Station	5+35.91	X	2,967,792.74	Y 13,840,589.45
P.T. Station	8+44.20	X	2,968,059.56	Y 13,840,737.23
C.C.			2,968,212.60	Y 13,840,146.15
Back	N 46° 33' 18.14" E			
Ahead	N 75° 29' 03.00" E			
Chord Bear	N 61° 01' 10.57" E			

Curve Data				
Curve DETOURLT-3				
P.I. Station	8+80.00	X	2,968,094.48	Y 13,840,745.14
Delta	6° 20' 02.53"	(RT)		
Degree	8° 51' 20.19"			
Tangent	35.80			
Length	71.53			
Radius	647.00			
External	0.99			
Long Chord	71.48			
Mid. Ord.	0.99			
P.C. Station	8+44.20	X	2,968,059.56	Y 13,840,737.23
P.T. Station	9+15.72	X	2,968,130.05	Y 13,840,749.15
C.C.			2,968,202.54	Y 13,840,106.23
Back	N 77° 14' 00.11" E			
Ahead	N 83° 34' 02.65" E			
Chord Bear	N 80° 24' 01.38" E			

Course from PT DETOURLT-3 to DLT2 N 85° 08' 56.66" E Dist 120.79
Point DLT2 X 2,968,250.40 Y 13,840,759.37 Sta 10+36.51
Course from DLT2 to DLT3 N 86° 58' 25.02" E Dist 115.76
Point DLT3 X 2,968,366.00 Y 13,840,765.48 Sta 11+52.27
Course from DLT3 to PC DETOURLT-4 S 1° 45' 43.75" E Dist 11.48

Curve Data				
Curve DETOURLT-4				
P.I. Station	11+79.48	X	2,968,382.06	Y 13,840,754.79
Delta	0° 00' 03.65"	(LT)		
Degree	0° 00' 11.60"			
Tangent	15.72			
Length	31.45			
Radius	1,778,375.41			
External	0.00			
Long Chord	31.45			
Mid. Ord.	0.00			
P.C. Station	11+43.76	X	2,968,366.36	Y 13,840,754.00
P.T. Station	11+95.20	X	2,968,397.76	Y 13,840,755.58
C.C.			2,969,032.88	Y 15,616,884.24
Back	N 87° 07' 14.30" E			
Ahead	N 87° 07' 10.65" E			
Chord Bear	N 87° 07' 12.47" E			

Curve Data				
Curve DETOURLT-5				
P.I. Station	12+23.53	X	2,968,426.06	Y 13,840,757.00
Delta	0° 00' 05.77"	(RT)		
Degree	0° 00' 10.19"			
Tangent	28.33			
Length	56.66			
Radius	2,024,812.33			
External	0.00			
Long Chord	56.66			
Mid. Ord.	0.00			
P.C. Station	11+95.20	X	2,968,397.76	Y 13,840,755.58
P.T. Station	12+51.86	X	2,968,454.35	Y 13,840,758.43
C.C.			3,070,146.32	Y 11,818,501.34
Back	N 87° 07' 10.65" E			
Ahead	N 87° 07' 16.42" E			
Chord Bear	N 87° 07' 13.54" E			

B DETOURLT (CONTINUED)

Curve Data				
Curve DETOURLT-6				
P.I. Station	12+65.95	X	2,968,468.42	Y 13,840,759.13
Delta	0° 28' 58.68"	(RT)		
Degree	1° 42' 44.58"			
Tangent	14.09			
Length	28.17			
Radius	3,345.97			
External	0.03			
Long Chord	28.17			
Mid. Ord.	0.03			
P.C. Station	12+51.86	X	2,968,454.35	Y 13,840,758.43
P.T. Station	12+80.03	X	2,968,482.49	Y 13,840,759.72
C.C.			2,968,622.40	Y 13,837,416.68
Back	N 87° 07' 16.42" E			
Ahead	N 87° 36' 13.12" E			
Chord Bear	N 87° 21' 44.77" E			

Curve Data				
Curve DETOURLT-7				
P.I. Station	12+92.16	X	2,968,494.61	Y 13,840,760.23
Delta	0° 03' 57.68"	(RT)		
Degree	0° 16' 19.92"			
Tangent	12.13			
Length	24.25			
Radius	21,049.16			
External	0.00			
Long Chord	24.25			
Mid. Ord.	0.00			
P.C. Station	12+80.03	X	2,968,482.49	Y 13,840,759.72
P.T. Station	13+04.29	X	2,968,506.73	Y 13,840,760.72
C.C.			2,969,362.61	Y 13,819,728.97
Back	N 87° 36' 13.12" E			
Ahead	N 87° 40' 10.79" E			
Chord Bear	N 87° 38' 11.95" E			

Course from PT DETOURLT-7 to DLT4 N 87° 30' 03.01" E Dist 46.24
Point DLT4 X 2,968,552.93 Y 13,840,762.74 Sta 13+50.53
Course from DLT4 to DLT5 N 87° 23' 30.10" E Dist 320.75
Point DLT5 X 2,968,873.34 Y 13,840,777.33 Sta 16+71.28
Course from DLT5 to DLT6 N 87° 39' 47.71" E Dist 38.69
Point DLT6 X 2,968,912.01 Y 13,840,778.91 Sta 17+09.97

Ending chain DETOURLT description

B DETOURRT

Beginning chain DETOURRT description

Curve Data				
Curve DETOURRT-1				
P.I. Station	1+98.83	X	2,967,649.34	Y 13,840,299.80
Delta	24° 46' 23.53"	(RT)		
Degree	12° 43' 56.62"			
Tangent	98.83			
Length	194.57			
Radius	450.00			
External	19.72			
Long Chord	193.06			
Mid. Ord.	10.47			
P.C. Station	1+00.00	X	2,967,646.26	Y 13,840,201.01
P.T. Station	2+94.57	X	2,967,693.53	Y 13,840,388.19
C.C.			2,968,096.04	Y 13,840,186.99
Back	N 1° 47' 08.35" E			
Ahead	N 26° 33' 31.88" E			
Chord Bear	N 14° 10' 20.11" E			

Course from PT DETOURRT-1 to PC DETOURRT-2 N 26° 33' 31.88" E Dist 57.07

Curve Data				
Curve DETOURRT-2				
P.I. Station	6+44.25	X	2,967,849.88	Y 13,840,700.97
Delta	60° 40' 28.51"	(RT)		
Degree	11° 27' 32.96"			
Tangent	292.61			
Length	523.49			
Radius	500.00			
External	79.33			
Long Chord	505.09			
Mid. Ord.	68.47			
P.C. Station	3+51.83	X	2,967,719.05	Y 13,840,439.24
P.T. Station	8+81.12	X	2,968,142.15	Y 13,840,715.10
C.C.			2,968,166.28	Y 13,840,215.68
Back	N 26° 33' 31.88" E			
Ahead	N 87° 14' 00.39" E			
Chord Bear	N 56° 53' 46.13" E			

Course from PT DETOURRT-2 to DRT2 N 87° 14' 00.39" E Dist 225.73
Point DRT2 X 2,968,367.62 Y 13,840,725.99 Sta 11+06.85
Course from DRT2 to DRT3 N 87° 14' 00.39" E Dist 166.52
Point DRT3 X 2,968,533.94 Y 13,840,734.03 Sta 12+73.37
Course from DRT3 to DRT4 N 83° 13' 47.42" E Dist 328.13
Point DRT4 X 2,968,859.79 Y 13,840,772.71 Sta 16+01.50
Course from DRT4 to DRT5 N 87° 23' 34.46" E Dist 13.74
Point DRT5 X 2,968,873.52 Y 13,840,773.34 Sta 16+15.25
Course from DRT5 to DRT6 N 87° 39' 47.71" E Dist 38.69
Point DRT6 X 2,968,912.17 Y 13,840,774.92 Sta 16+53.93

Ending chain DETOURRT description

NO.	DATE	REVISION	APPROVED
13	1/28/18	ADDED PHASE 1, STAGE 1, STEP 2 REVISED DETOUR GEOMETRY	F. SIKORRELL



Paul Signum 3-29-18

FORT BEND COUNTY, TEXAS

EHRA 10555 Westoffice Drive
Houston, Texas 77042
713.784.4500
EHRAinc.com
BPE No. F726

CANE ISLAND PARKWAY (FM 1463 TO IH10)
**TRAFFIC CONTROL PLANS
DETOURS
CONSTRUCTION DETAILS**
SHEET 2 OF 2

DN: EHRA	PROJECT NO.	HIGHWAY NO.
CK DN: EHRA		CANE ISLAND
DW: EHRA	STATE	COUNTY
CK DW: EHRA	TEXAS	FORT BEND
		33A

Date: 06/15/2018

Project: Cane Island Parkway

Contractor: Earth Builders, LP

FM 1463 Temporary Traffic Detour & Buildup Addendum

No. 13

Item Spec. Description
No. No.

			Unit	Qty's	Unit Price	Total
1		Light Towers	EA	4	\$540.00	\$2,160.00
2		Flaggers 3 Each W/ Communication	HR	25	\$90.00	\$2,250.00
3		TMA Truck	Day	2	\$1,300.00	\$2,600.00
4		Electric Message Boards (2) Each	Day	2	\$800.00	\$1,600.00
5		Traffic Control Signs	LS	1	\$3,800.00	\$3,800.00
6		Law Enforcement Officers (2) Each	HR	25	\$104.96	\$2,624.00
33	TX340	2" HMA Ty-C Sac-A PG 70-72	TN	128.39	\$75.00	\$9,629.25
35	TX292	Asphalt Stabilized Base Gr 2 Pg 70	TN	129.95	\$65.00	\$8,446.75
	TX300	EAP & T Tack Coat	GALS	363.64	\$8.25	\$3,000.03
		Temporary Plastic Tabs (Double Yellow)	EA	250	\$2.00	\$500.00
		Temporary Plastic Tabs (White)	EA	260	\$2.00	\$520.00
		Week End and Night Time Operation	LS	1	\$13,000.00	\$13,000.00
Total Additional Work						\$50,130.03

Project: Cane Island Parkway

Contractor: Earth Builders, LP

FM 1463 Temporary Traffic Detour Addendum No. 13

Description	Unit	Qty's	Unit Price	Total
Night Time and Weekend Additional Hours Required				
Equipment Cost				
RP 195 Road-Tec Paver	HR	12	\$116.00	\$1,392.00
12M Cat Motor Grader	HR	12	\$107.00	\$1,284.00
WA 250 Komatsu Loader	HR	12	\$46.00	\$552.00
CB 534D Cat Roller	HR	12	\$43.00	\$516.00
Water Truck	Hr	12	\$35.00	\$420.00
Sweeper	Hr	12	\$25.00	\$300.00
Labor Rate				
9-Labors at \$30.00 Per Hour Each	HR	12	\$270.00	\$3,240.00
2-Supervisors with Pickup and Small Tools at \$65.00/Hr. Each	HR	12	\$130.00	\$1,560.00
	Total Equipment & Labor			\$9,264.00
Subcontractor Night Time Hour Rate				
Asphalt Plant	Day	2	\$1,500.00	\$3,000.00
Equipment, Labor, & Subcontractor				\$12,264.00
				5% OH \$613.20
				Sub Total \$12,877.20
				1% Profit \$128.77
Total Weekend and Night Time Cost				\$13,005.97

CERTIFICATE OF INTERESTED PARTIES

FORM 1295

1 of 1

Complete Nos. 1 - 4 and 6 if there are interested parties.
Complete Nos. 1, 2, 3, 5, and 6 if there are no interested parties.

OFFICE USE ONLY CERTIFICATION OF FILING

Certificate Number:
2018-375757

Date Filed:
07/03/2018

Date Acknowledged:

1 Name of business entity filing form, and the city, state and country of the business entity's place of business.

Earth Builders,LP
Decatur, TX United States

2 Name of governmental entity or state agency that is a party to the contract for which the form is being filed.

Fort Bend County

3 Provide the identification number used by the governmental entity or state agency to track or identify the contract, and provide a description of the services, goods, or other property to be provided under the contract.

B17-073
Cane Island Parkway from FM 1463 to IH 10

4	Name of Interested Party	City, State, Country (place of business)	Nature of interest (check applicable)	
			Controlling	Intermediary

5 Check only if there is NO Interested Party.



6 UNSWORN DECLARATION

My name is _____, and my date of birth is _____.

My address is _____ (street) _____ (city) _____ (state) _____ (zip code) _____ (country)

I declare under penalty of perjury that the foregoing is true and correct.

Executed in _____ County, State of _____, on the _____ day of _____, 20____.
(month) (year)

Signature of authorized agent of contracting business entity
(Declarant)

CERTIFICATE OF INTERESTED PARTIES

FORM 1295

1 of 1

Complete Nos. 1 - 4 and 6 if there are interested parties.
Complete Nos. 1, 2, 3, 5, and 6 if there are no interested parties.

OFFICE USE ONLY CERTIFICATION OF FILING

1 Name of business entity filing form, and the city, state and country of the business entity's place of business.

Earth Builders, LP
Decatur, TX United States

Certificate Number:
2018-375757

Date Filed:
07/03/2018

2 Name of governmental entity or state agency that is a party to the contract for which the form is being filed.

Fort Bend County

Date Acknowledged:
07/24/2018

3 Provide the identification number used by the governmental entity or state agency to track or identify the contract, and provide a description of the services, goods, or other property to be provided under the contract.

B17-073
Cane Island Parkway from FM 1463 to IH 10

4	Name of Interested Party	City, State, Country (place of business)	Nature of interest (check applicable)	
			Controlling	Intermediary

5 Check only if there is NO Interested Party.



6 UNSWORN DECLARATION

My name is _____, and my date of birth is _____.

My address is _____, _____, _____, _____, _____.
(street) (city) (state) (zip code) (country)

I declare under penalty of perjury that the foregoing is true and correct.

Executed in _____ County, State of _____, on the _____ day of _____, 20____.
(month) (year)

Signature of authorized agent of contracting business entity
(Declarant)