

**Fort Bend County
Engineering Department**
301 Jackson Suite 401
Richmond, Texas 77469
281.633.7500
Permits@fortbendcountytexas.gov

Applicant: MCI Metro Access Transmission Services, Corp./Eagle Eye Permitting & Design, LLC

Bond No. [REDACTED] **Date of Bond:** 5/1/2017 **Amount:** \$50,000.00

Notes:

1. Evidence of review by the Commissioners Court must be kept on the job site and failure to do so constitutes grounds for job shutdown.
2. Written notices are required:
 - a. 48 hours in advance of construction start up, and
 - b. When construction is completed and ready for final inspection, submit notification to Permit Administrator thru MyGovernmentOnline.org portal.
3. This permit expires one (1) year from date of permit if construction has not commenced.

Signature

By:

County Engineer

N/A

By:

Drainage District Engineer/Manager

Presented to Commissioners Court and approved.

Date Recorded

5-25-2016 Comm. Court No. 13D

Clerk of Commissioners Court

By:

Deputy



**PERMIT APPLICATION REVIEW FORM FOR
CABLE, CONDUIT, AND POLE LINE ACTIVITY
IN FORT BEND COUNTY**

**Fort Bend County
Engineering Department**
301 Jackson Suite 401
Richmond, Texas 77469
281.633.7500
Permits@fortbendcountytx.gov

- ☒ Right of Way Permit
☐ Commercial Driveway Permit

Permit No: 2018-19864

The following "Notice of Proposed Cable, Conduit, and/or Pole Line activity in Fort Bend County" and accompanying attachments have been reviewed and the notice conforms to appropriate regulations set by Commissioner's Court of Fort Bend County, Texas.

(1) COMPLETE APPLICATION FORM:

- ☒ a. Name of road, street, and/or drainage ditch affected.
☒ b. Vicinity map showing course of directions
☒ c. Plans and specifications

(2) BOND:

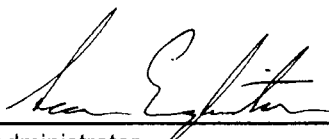
- ☐ County Attorney, approval when applicable.
- ☒ Perpetual bond currently posted. Bond No: [REDACTED] Amount: \$50,000.00
- ☐ Performance bond submitted. Bond No: _____ Amount: _____
- ☐ Cashier's Check Check No: _____ Amount: _____

(3) DRAINAGE DISTRICT APPROVAL (WHEN APPLICABLE):

Drainage District Approval

Date

We have reviewed this project and agree it meets minimum requirements.



Permit Administrator

5/15/2018

Date

MCImetro
ACCESS TRANSMISSION SERVICES CORPORATION

OUTSIDE PLANT CONSTRUCTION
FIBER OPTIC CABLE ROUTE

MCI ONE-FIBER
HO 0012-108997-KINGSPPOINT
HOUSTON, TX

SITE HO 0012-108997

PROJECT STATUS: CONSTRUCTION



LOCATION MAP HOUSTON, TX HARRIS COUNTY



PROJECT:

HOUSTON, TX
HO 0012-108997-KINGSPONT LATERAL
HO 0012-108997

MCImetro
ACCESS TRANSMISSION SERVICES
CORPORATION
OUTSIDE PLANT CONSTRUCTION
TITLE: FIBER OPTIC ROUTE
HO 0012-108997-KINGSPONT LATERAL
HOUSTON, TX

DATE: 10-26-2017

ENGINEER: EAGLE EYE

DRAWN BY: ROBERT SANTOS

REVISIONS

NO.	DATE	DESCRIPTION	BY
1	12/03/17	1ST REVISION	RS

EXCEPT AS MAY BE OTHERWISE PROVIDED BY CONTRACT, THESE DRAWINGS AND SPECIFICATIONS SHALL REMAIN THE PROPERTY OF MCI COMMUNICATIONS SERVICES INC. BOTH BEING REUSED IN STRICT CONFERENCE AND SHALL NOT BE REPRODUCED, COPIED, OR USED FOR ANY PURPOSE WITHOUT SPECIFIC WRITTEN PERMISSION.

SCALE

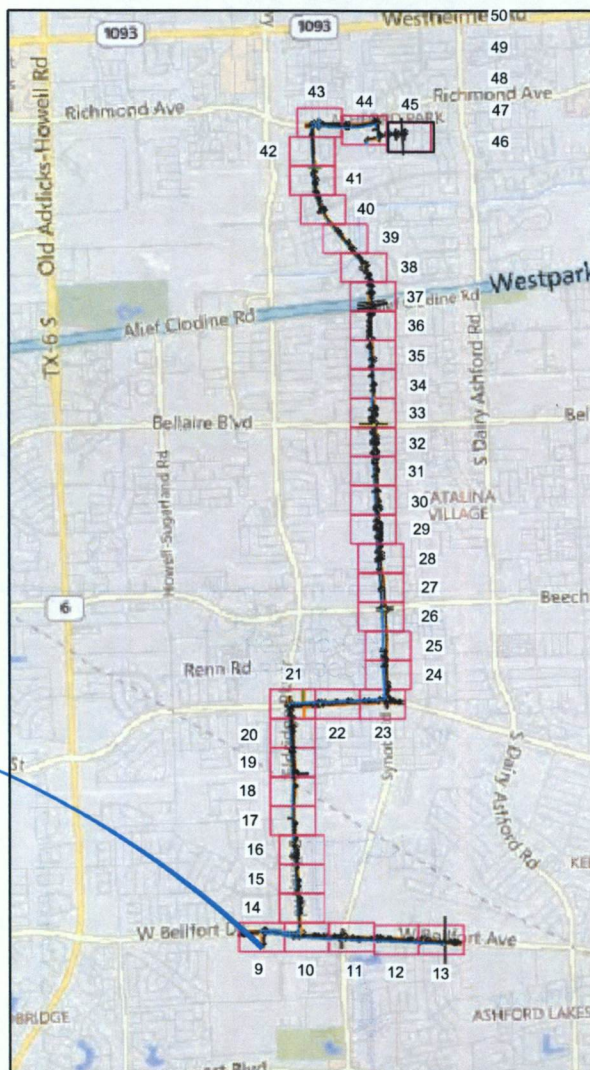
HORIZONTAL: 1"= N/A

VERTICAL: 1"= N/A

MP TO MP

SHEET 02 OF 50

FILE: ECC-KINGSPONT



KINGSPONT
TOWER

MAP LINE LEGEND

----- PROPOSED
BURIED CABLE
----- PROPOSED
AERIAL CABLE

CONTACT SHEET

HOUSTON, TX
FORT BEND COUNTY

MCI

PROJECT ENGINEER:

PROJECT MANAGER:

PROJECT COORDINATOR:

OUTSIDE PLANT CONSTRUCTION:

CONSTRUCTION CONTRACTOR: ERVIN CABLE CONSTRUCTION 844-322-2524

CONSTRUCTION MANAGER: AURELIO MALLAMANCE 270-349-0337

PROJECT COORDINATOR:

AGENT:

MANAGER:

COORDINATOR:

MANAGER:

PROGRAM MANAGER:

LIGHTWAVE ENGINEER:

CIVIL ENGINEER:

TERMINAL CONST. REP.:

SPLICING MANAGER:

TSO MANAGER:

ENGINEERING CONTRACTOR

OFFICE:

PRESIDENT:

OFFICE:
CELL:
E-MAIL

PROJECT MANAGER:

OFFICE:
CELL:
E-MAIL

NAME OF FIRM:

PROJECT COORDINATOR:

PROJECT SUPERINTENDENT:

RAILROADS

UNION PACIFIC RAILROAD

DANIEL PETERS

402-544-8620

UTILITIES

MCI UTILITY LOCATE

1-800-624-9675

TEXAS ONE CALL SYSTEM (UTILITY LOCATES)

1-800-545-6005

NON MEMBERS:

CITY GOVERNMENT

CITY OF HOUSTON
- SANITARY SEWER

- TRAFFIC
- ROAD & BRIDGE
- STORM QUALITY
- WATER

MIKE NOWROOZI
SAM HABIBI
NAEEM HUSAIN
RICK KOVACHICH
ZIA MOHAMMADI
ROBERTO GOMEZ
BILL CROUCH

832-394-9123
832-394-9124
832-394-9128
832-394-9132
832-394-9134
832-394-9160
832-394-9161

COUNTY GOVERNMENT

HARRIS COUNTY

STATE GOVERNMENT

TXDOT

SAMIR GOEL

713-802-5321

FEDERAL GOVERNMENT

N/A

OTHER

N/A



PROJECT:

HOUSTON, TX

HO 0012-108997-KINGSPONT LATERAL

HO 0012-108997

McImetro
ACCESS TRANSMISSION SERVICES
CORPORATION

OUTSIDE PLANT CONSTRUCTION
TITLE: FIBER OPTIC ROUTE

HO 0012-108997-KINGSPONT LATERAL
HOUSTON, TX

DATE: 10-26-2017

ENGINEER: EAGLE EYE

DRAWN BY: ROBERT SANTOS

REVISIONS

NO.	DATE	DESCRIPTION	BY
1	12/20/17	1ST REVISION	RS

EXCEPT AS MAY BE OTHERWISE PROVIDED BY CONTRACT, THESE DRAWINGS AND SPECIFICATIONS SHALL REMAIN THE PROPERTY OF MCI COMMUNICATIONS SERVICES INC. BOTH BEING ISSUED IN STRICT CONFERENCE AND SHALL NOT BE REPRODUCED, COPIED, OR USED FOR ANY PURPOSE WITHOUT SPECIFIC WRITTEN PERMISSION.

SCALE

HORIZONTAL: 1"= N/A

VERTICAL: 1"= N/A

MP TO MP

SHEET 03 OF 50

FILE: ECC-KINGSPONT

GENERAL NOTES / CLARIFICATION NOTES

GENERAL NOTES

- VERIZON BUSINESS COMPRISES THE FOLLOWING OPERATING ENTITIES:
 - MCI COMMUNICATIONS SERVICES, INC.
 - MCI METRO ACCESS TRANSMISSION SERVICES CORPORATION
 - MCI METRO ACCESS TRANSMISSION SERVICES OF VIRGINIA, INC.
 - MCI METRO ACCESS TRANSMISSION SERVICES OF MASSACHUSETTS, INC.
 - METROPOLITAN FIBER SYSTEMS OF NEW YORK, INC.
- ALL WORK TO BE PERFORMED IN STRICT ACCORDANCE WITH THE APPLICABLE CODES OR REQUIREMENTS OF ANY REGULATING GOVERNMENTAL AGENCY, VERIZON BUSINESS AND THE RIGHT-OF-WAY GRANTOR.
- LOCATIONS OF SOME OF THE PHYSICAL FEATURES WERE OBTAINED FROM DATED RAILROAD EVALUATION MAPS OR OTHER DRAWINGS AND MAY NOT BE AS SHOWN OR DEPICTED ON THESE DRAWINGS.
- UNDERGROUND UTILITIES HAVE BEEN PLOTTED FROM AVAILABLE RECORDS AND FIELD OBSERVATIONS BUT ARE NOT NECESSARILY EXACT. THEREFORE, UTILITY LOCATIONS WILL BE VERIFIED AT LEAST 100 FEET IN ADVANCE OF TRENCHING OR PLOWING, SO THAT CHANGES IN CABLE PLACEMENT CAN BE MADE IN THE EVENT OF CONFLICT.
- ALL KNOWN BURIED OBSTRUCTIONS ARE SHOWN ON THE CONSTRUCTION DRAWINGS. ANY AND ALL OTHERS ENCOUNTERED ARE ALSO THE RESPONSIBILITY OF THE CONTRACTOR TO LOCATE, PROTECT AND REPAIR IF DAMAGED.
- ANY AND ALL IMPROVEMENTS, SUCH AS ASPHALT OR CONCRETE PAVEMENT, CURBS, GUTTERS, WALKS, DRAINAGE DITCHES, EMBANKMENTS, SHRUBS, TREES, GRASS SOD, ETC., IF DAMAGED, SHALL BE RESTORED TO ORIGINAL CONDITION.
- EQUIPMENT TYPES SPECIFIED HEREIN (IE: "BACKHOE", SWAMP PLOW" ETC.) ARE SUGGESTIONS ONLY AND ARE NOT INTENDED AS REQUIREMENTS. CONTRACTOR WILL BE NOTIFIED AS TO EXPECTATIONS.
- SHORING OF BORE PITS AND TRENCHES IN ACCORDANCE WITH OSHA REGULATIONS IS MANDATORY.
- BURIED CABLE MARKERS WILL BE PLACED AT ALL UNDERGROUND UTILITY LOCATIONS AND ALL OTHER LOCATIONS IN ACCORDANCE WITH THE CONSTRUCTION DRAWINGS AND THE OUTSIDE PLANT HANDBOOK.
- ALL 4" ID CONDUIT WILL BE SCHEDULE 40 (EG.: PVC OR GSP/BSP), OR AS SPECIFIED.
- UNDERGROUND CONDUIT WILL BE PLACED AT 48" MINIMUM COVER UNLESS OTHERWISE SPECIFIED ON THE CONSTRUCTION DRAWINGS.

CLARIFICATION NOTES

1.
2.
3.
4.
5.
6.
7.

- STATION
- LOCATION
- CLARIFICATION NO. AND MINIMUM COVER
- QUANTITY LINEAR FOOTAGE/SQUARE FOOTAGE, SIZE OF MANHOLE/HANDHOLE SIZE OF PULL/SPLICE BOX, DIMENSION OF WALL, HEIGHT/CLASS/TYPER OF POLE
- TYPICAL DRAWING NO. AND TYPICAL DETAIL DRAWING NUMBER
- PLANT ACCOUNTING CODE
- SPECIFIED CONDUIT, HANDHOLE/MANHOLE NO., SPECIFIED PURPOSE AND MATERIAL, BRIDGE NO. AND RAILROAD STATION, MATERIAL, POLE NO.

ADDENDUM NOTES: HARRIS COUNTY - 48 HOUR NOTICE

- CONTRACTOR SHALL NOTIFY HARRIS COUNTY (48 HOURS) PRIOR TO COMMENCING CONSTRUCTION AND/OR BACKFILLING ANY UTILITIES.
- CONTRACTOR(S) ARE TO CONTACT HARRIS COUNTY "PUBLIC REVIEW DEPARTMENT" BY PHONE OR EMAIL - 713-274-3931
- public.review@chpikd.org

CLARIFICATION NOTES (CONTINUED)

- | | | |
|-----|-----|--|
| 100 | 110 | JACK AND DRY BORE CONDUIT(S) |
| 200 | 210 | PLACE CONDUIT |
| | 212 | PLACE HIGH DENSITY POLYETHYLENE (HDPE) |
| | 213 | ROCK ADDER |
| | 214 | SLURRY BACKFILL ADDER |
| | 215 | EXPOSE CONDUIT |
| | 216 | EXPOSE CONDUIT AND RELOCATE |
| | 217 | EXPOSE CONDUIT AND REPLACE/SUBSTITUTE |
| | 218 | EXPOSE AND REMOVE CONDUIT |
| | 219 | EXPOSE AND REMOVE CONDUIT (ABANDONED) |
| | 220 | CONCRETE ENCASE |
| | 221 | REMOVE CONCRETE ENCASEMENT |
| | 222 | REMOVE CONCRETE CAP |
| | 240 | PLACE HANDHOLE |
| | 244 | REMOVE EXISTING HANDHOLE |
| | 245 | RELOCATE HANHOLE |
| | 246 | REPLACE/SUBSTITUTE HANDHOLE |
| | 247 | EXCAVATE SPLICE PIT |
| | 250 | PLACE MANHOLE |
| | 252 | REMOVE EXISTING MANHOLE |
| | 255 | RELOCATE PRECAST MANHOLE |
| | 256 | REPLACE/SUBSTITUTE PRECAST MANHOLE |
| | 180 | CONSTRUCT WALL |
| | 270 | REMOVE AND RESTORE ASPHALT |
| | 280 | REMOVE AND RESTORE CONCRETE |
| | 281 | REMOVE AND RESTORE SIDEWALK |
| | 282 | REMOVE AND RESTORE CURBING |
| 300 | 310 | ATTACH CONDUIT TO WALL OR STRUCTURE |
| | 315 | DETACH CONDUIT FROM WALL OR STRUCTURE |
| | 320 | CORE BORE |
| | 330 | ATTACH PULL/SPLICE BOX TO WALL OR STRUCTURE |
| 400 | 410 | PULL CABLE |
| | 411 | PULL THROUGH DUCT (INNERDUCT) |
| | 415 | REMOVE CABLE FROM CONDUIT |
| | 420 | REPOSITION ACTIVE CABLE SLACK |
| 500 | 510 | DIRECT BURY CABLE |
| | 515 | EXPOSE DIRECT BURIED CABLE |
| | 516 | EXPOSE DIRECT BURIED CABLE AND RELOCATE |
| | 517 | REMOVE AND DISPOSE OF CABLE |
| | 520 | PLACE AERIAL CABLE |
| | 525 | RELOCATE AERIAL CABLE |
| | 518 | DELASH AERIAL CABLE |
| | 527 | RELASH AERIAL CABLE |
| | 528 | REMOVE AERIAL CABLE |
| | 530 | PLACE POLE/PUSH BRACE |
| | 535 | REMOVE POLE/PUSH BRACE |
| 600 | 610 | JETTING CONDUIT |
| | 620 | EMBEDMENT PLOW |
| | 630 | DIRECTIONAL BORE |
| 700 | 710 | PLACE BURIED CABLE MARKERS AND SIGNS/MWCOM |
| | 711 | WATER CROSSING SIGNS |
| | 713 | PLACE ISOLATOR/PROTECTION SYSTEM AT EXISTING |
| | 712 | HANDHOLES/MANHOLES |
| | 714 | REMOVE BURIED CABLE MARKER POST/HARDWARE |
| | | REMOVE CONCRETE BURIED CABLE MARKER POST |



PROJECT:
HOUSTON, TX
HO 0012-108997-KINGSPONT LATERAL
HO 0012-108997

MCI metro
ACCESS TRANSMISSION SERVICES
CORPORATION
OUTSIDE PLANT CONSTRUCTION
TITLE: FIBER OPTIC ROUTE
HO 0012-108997-KINGSPONT LATERAL
HOUSTON, TX

DATE: 10-26-2017

ENGINEER: EAGLE EYE

DRAWN BY: ROBERT SANTOS

REVISIONS

NO.	DATE	DESCRIPTION	BY
1	12/05/17	1ST REVISION	RS

EXCEPT AS MAY BE OTHERWISE PROVIDED BY CONTRACT, THESE DRAWINGS AND SPECIFICATIONS SHALL REMAIN THE PROPERTY OF MCI COMMUNICATIONS SERVICES INC. BOTH BEING ISSUED IN STRICT CONFIDENCE AND SHALL NOT BE REPRODUCED, COPIED, OR USED FOR ANY PURPOSE WITHOUT SPECIFIC WRITTEN PERMISSION.

SCALE

HORIZONTAL: 1"= N/A

VERTICAL: 1"= N/A

MP TO MP

SHEET 04 OF 50

FILE: ECC-KINGSPONT

MCI OUTSIDE PLANT FOCUS

FIBER OPTIC CABLE UNCOVERING SYSTEM

1. THE TITLE OF THIS PROGRAM, **F.O.C.U.S.**, AN ACRONYM FOR **FIBER OPTIC CABLE UNCOVERING SYSTEM**, WAS SELECTED TO REMIND EVERYONE INVOLVED WITH WORKING NEAR MC'S ACTIVE FIBER OPTIC SYSTEMS TO FOCUS ON PROTECTING THE FACILITIES. IF, DURING THE COURSE OF THE PROJECT, YOU NOTICE ANY ACTIVITY WHICH MAY JEOPARDIZE THE MCI OSP FACILITIES, IT IS YOUR DUTY TO STOP THE WORK AND RE-**F.O.C.U.S.**
2. **F.O.C.U.S.** RULES MUST BE FOLLOWED ON ALL MCI PROJECTS INVOLVING WORK ON OR NEAR MCI OSP FACILITIES. SAFETY IS MC'S NUMBER ONE PRIORITY; EVERYONE MUST REFRAIN FROM UNSAFE AND IMPROPER PRACTICES.
3. REVIEW OF **F.O.C.U.S.** IS MANDATORY AT EVERY PRE-BID, PRE-CONSTRUCTION SITE MEETING AND DAILY TAILGATE MEETING. **F.O.C.U.S.** DISCUSSION MUST INCLUDE SITE-SPECIFIC HISTORY, UNIQUE PROBLEMS, FACILITY CONFIGURATIONS THAT MAY BE ENCOUNTERED, AND PAST ERRORS. "THOSE WHO DO NOT LEARN FROM HISTORY ARE DOOMED TO REPEAT IT." DO NOT LET THIS HAPPEN TO YOU.
4. ANY WORK NEAR OR REQUIRING HANDLING OF MCI OUTSIDE PLANT FACILITIES CAN ONLY BE PERFORMED WITH AN MCI EMPLOYEE OR CONTRACT REPRESENTATIVE PRESENT – **THIS MEANS OUT OF HIS OR HER VEHICLE AND DIRECTLY MONITORING THE WORK**. THE REPRESENTATIVE MUST HAVE A PROPERLY OPERATING CABLE LOCATOR CHECKED FOR ACCURACY EVERY DAY PRIOR TO COMMENCEMENT OF WORK (COMPARISON OF LINE AND DEPTH READINGS TO ACTUAL LINE AND DEPTH OF THE CABLE).
5. LOCATE AND POTHOLE REQUIREMENTS:
 - PRIOR TO ANY EXCAVATION, THE MCI EMPLOYEE OR CONTRACT REPRESENTATIVE MUST VERIFY THE INITIAL LOCATE MARKS COMPLETED BY MCI OPERATIONS. **DO NOT TRUST LOCATE RESULTS COMPLETED BY OTHERS** THE MCI OR CONTRACT REPRESENTATIVE MUST LOCATE THE CABLE RUNNING LINE BY MAKING AT LEAST ONE PASS IN EACH DIRECTION. LOCATE RESULTS MUST THEN BE COMPARED WITH PREVIOUS MARKS AND THE AS-BUILTS.
 - IF THE PROPOSED WORK INVOLVES DIGGING OR EXCAVATING WITHIN 3 FEET OF THE CABLE, THE CABLE ROUTE WILL BE MARKED CONTINUALLY WITH ORANGE PAINT AND SUPPLEMENTED BY MARKER FLAGS PLACED EVERY 10 FT. THE EXCAVATION CONTRACTOR MUST POTHOLE **(ALL POTHOLES MUST BE COMPLETED BY HAND DIGGING OR VACUUM EXCAVATION)** A MINIMUM OF EVERY 15 FT., THEN EXPOSE THE ENTIRE LENGTH OF THE CABLE BY HAND DIGGING OR VACUUM EXCAVATION.
 - IF THE PROPOSED WORK INVOLVES DIGGING OR EXCAVATING WITHIN 5 FEET (BUT NOT CLOSER THAN 3 FEET) OF THE CABLE, THE CABLE ROUTE WILL BE MARKED CONTINUALLY WITH ORANGE PAINT AND SUPPLEMENTED BY MARKER FLAGS PLACED EVERY 10 FT. THE EXCAVATION CONTRACTOR MUST POTHOLE THE CABLE A MINIMUM OF EVERY 15 FT.
 - IF THE PROPOSED WORK INVOLVES DIGGING OR EXCAVATING WITHIN 5 FEET (BUT NOT CLOSER THAN 3 FEET) OF THE CABLE, THE CABLE ROUTE WILL BE MARKED CONTINUALLY WITH ORANGE PAINT AND SUPPLEMENTED BY MARKER FLAGS PLACED EVERY 10 FT. THE EXCAVATION CONTRACTOR MUST POTHOLE THE CABLE A MINIMUM OF EVERY 15 FT.
 - THE CABLE WILL ALSO BE POTHOLED AT ANY CHANGE IN THE RUNNING LINE OF MORE THAN 1 FT. IN ANY DIRECTION, ANYTIME THE ACCURACY OF THE ELECTRONIC LOCATE IS QUESTIONED, OR THE MARKED RUNNING LINE DOES NOT MATCH THE AS-BUILTS.
6. EXPOSING REQUIREMENTS:
 - NO MECHANICAL EXCAVATION WITHIN 3 FT. OF OSP FACILITIES WILL BE ALLOWED UNLESS THE FACILITIES HAVE FIRST BEEN PROPERLY LOCATED, POTHOLED, POSITIVELY IDENTIFIED, CONTINUOUSLY EXPOSED BY HAND DIGGING OR VACUUM EXCAVATION, AND THE FACILITIES ARE CLEARLY VISIBLE.
 - IN ADDITION, MECHANICAL EXCAVATION WITHIN 3 FT. OF OSP FACILITIES REQUIRES ON-SITE PRIOR APPROVAL FROM MCI'S EMPLOYEE OR CONTRACT REPRESENTATIVE.
7. PLEASE REFER TO THE LATEST EDITION OF THE MCI OSP HANDBOOK FOR ADDITIONAL DETAILS. KNOW IT AND FOLLOW IT.

MCI OUTSIDE PLANT CONSTRUCTION GENERAL REQUIREMENTS

- ALL FEDERAL, STATE AND LOCAL SAFETY REGULATIONS MUST BE FOLLOWED WITHOUT EXCEPTION.
- PERSONAL PROTECTIVE EQUIPMENT APPROPRIATE FOR THE SPECIFIC WORK SITE SHALL BE USED AT ALL TIMES. AT A MINIMUM, HARD HAT, SAFETY SHOES/STEEL-TOED BOOTS, AND FLORESCENT ORANGE OR GREEN WORK VEST ARE REQUIRED UPON ENTERING ANY MCI WORK SITE.
- USE OF INTOXICANTS, DRUGS, INHALANTS OR ANY OTHER SUBSTANCES THAT MAY IMPAIR ALERTNESS ARE STRICTLY PROHIBITED.
- CONTRACTORS ARE NOT ALLOWED TO CUT ANY CABLE. CABLES SCHEDULED FOR REMOVAL WILL BE CUT BY MCI OPERATIONS PERSONNEL, AND ONLY AFTER VERIFICATION THAT ALL TRAFFIC HAS BEEN OFF-LOADED.
- EXTREME CAUTION MUST BE USED AT ALL TIMES WHEN WORKING ON OR NEAR ACTIVE CABLES. AN MCI EMPLOYEE OR CONTRACT REPRESENTATIVE MUST APPROVE AND BE PRESENT PRIOR TO AND DURING ALL CABLE HANDLING ACTIVITIES.
- TOOLS AND EQUIPMENT SPECIFICALLY DESIGNED FOR THE JOB AT HAND ARE REQUIRED. USE THE PROPER TOOL FOR THE JOB.
- CONDUIT WORK INVOLVING ACTIVE CABLES REQUIRES SPECIALIZED TOOLS SPECIFICALLY DESIGNED TO ACCESS DUCTS WITH ACTIVE CABLES.
- PROTECTING MCI FACILITIES IS EXTREMELY IMPORTANT; HOWEVER, SAFETY REGARDING YOURSELF AND OTHERS IS THE MOST IMPORTANT PART OF ANY PROJECT.



PROJECT

HOUSTON, TX

HO 0012-108997-KINGSPPOINT LATERAL

HQ 0012-108997

McImetro
ACCESS TRANSMISSION SERVICES
CORPORATION

OUTSIDE BILANT CONSTRUCTION

TITLE: FIBER OPTIC ROUTE
HO 0012-108997-KINGSPPOINT LATERAL
HOUSTON, TX

DATE: 10-26-2017

ENGINEER: EAGLE EYE

DRAWN BY: ROBERT SANTOS

REVISIONS

No.	DATE	DESCRIPTION	BY
1	12/03/17	1ST REVISION	RS

EXCEPT AS MAY BE OTHERWISE PROVIDED BY CONTRACT, THESE DRAWINGS AND SPECIFICATIONS SHALL REMAIN THE PROPERTY OF MCI COMMUNICATIONS SERVICES INC. BOTH BEING ISSUED IN STRICT CONFIDENCE AND SHALL NOT BE REPRODUCED, COPIED, OR USED FOR ANY PURPOSE WITHOUT SPECIFIC WRITTEN PERMISSION.

SCALE

HORIZONTAL: 1"= N/A

VERTICAL: 1"= N/A

MP	TO MP
----	-------

SHEET 4A OF 50

FILE: ECC-KINGSPONT

CLARIFICATION SUMMARY SHEET PROJECT SPECIFIC

PROJECT CLARIFICATION SUMMARY		
DESCRIPTION	QUANTITY	UNIT
PLACE (30"x60"x30") HANDHOLE	65	EA
PLACE 1-2" HDPE (SDR 11) CONDUIT	43,134	LF
PULL 1-864F CABLE (INCLUDES 7150' IN COILS)	4,233	LF
PULL 1-72F CABLE (INCLUDES 150' IN COILS)	1,126	LF
PLACE (BURIED CABLE) MARKER	63	EA
EXISTING 1-2" HDPE (SDR 11) CONDUIT	488	LF

[illegible]

SYMBOLS KEY

DIRECT BURIED CABLE

AERIAL CABLE

SUBMARINE CABLE

FOGWIRE CABLE

DIRECT BURIED HDPE

PVC OR SPLIT PVC CONDUIT

BSP/GSP OR SPLIT BSP/GSP CONDUIT

STEEL CASING

REMOVE AND RESTORE ASPHALT OR CONCRETE
(WIDTH AS INDICATED)

CORE BORE

JACK AND BORE

DIRECTIONAL BORE (& PLACE CONDUIT)

FUTURE CABLE

REMOVE CABLE

TO BE REMOVED OR ABANDONED
(SHOWN FOR HDPE)

AERIAL UTILITY (ELECTRIC)

UNDERGROUND UTILITY (TELEPHONE)

MAIN TRACKS

AUXILIARY TRACKS

CENTERLINE

RIGHT-OF-WAY

EDGE OF ROADWAY (GENERIC)

EDGE OF PAVEMENT

BACK OF CURB

DITCH LINE

TAX, CITY, COUNTY, OR STATE BOUNDARY LINE

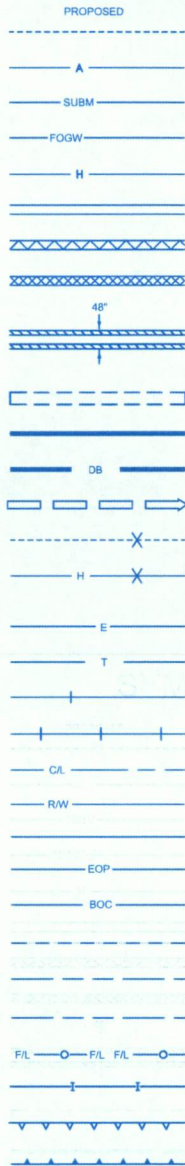
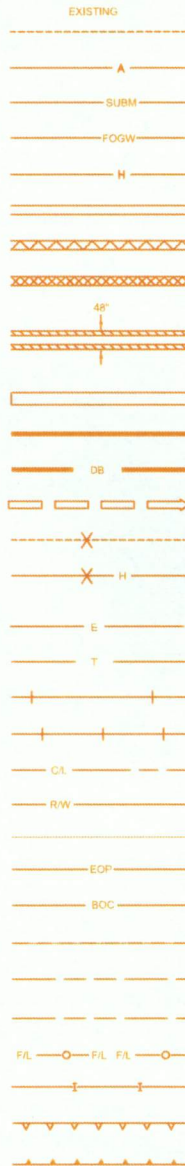
PROPERTY LINE

FENCE LINE

GUARDRAIL

TOP OF SLOPE

TOE OF SLOPE



STEEL MARKER AND SIGN-(A)
ALUMINUM "HUB"-STYLE MARKER-(B)
FLAT MARKER-(C)
TUBULAR MARKER-(D)
TUBULAR MARKER, & ISOLATOR PROTECTOR-(E)

MILE POST MARKER
NOTE:
DASHED = NOT FOUND IN FIELD

PERMIT TRACKING FORM IDENTIFIER

ROCK PROBE (DEPTH AS INDICATED)

UTILITY COVER DEPTH

HANDHOLE, MANHOLE OR PULLBOX

POLE

ANCHOR ONLY

GUY ONLY

OVERHEAD GUY (ARROW IN DIRECTION OF PULL)

ANCHOR AND GUY

SIDEWALK ANCHOR AND GUY

FOREIGN ANCHOR AND GUY

PUSH BRACE (EXISTING POLE)

ACCOUNT CODE CHANGE (BURIED TO AERIAL)

RISER ATTACHMENT LOCATION

BOND AND GROUND

CULVERT (SIZE AS INDICATED)

BRIDGE

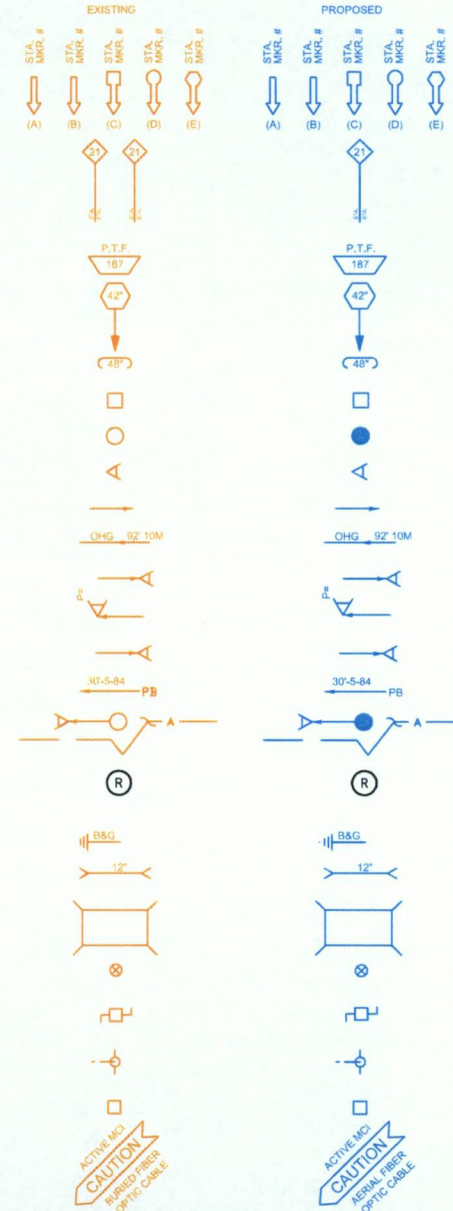
WATER METER

GAS VALVE

FIRE HYDRANT

RAILROAD SIGNAL CONTROL BOX

CAUTION NOTE



verizonbusiness

PROJECT: HOUSTON, TX
HO 0012-108997-KINGSPONT LATERAL
HO 0012-108997

MCImetro
ACCESS TRANSMISSION SERVICES
CORPORATION

OUTSIDE PLANT CONSTRUCTION
TITLE: FIBER OPTIC ROUTE
HO 0012-108997-KINGSPONT LATERAL
HOUSTON, TX

DATE: 10-26-2017
ENGINEER: EAGLE EYE
DRAWN BY: ROBERT SANTOS

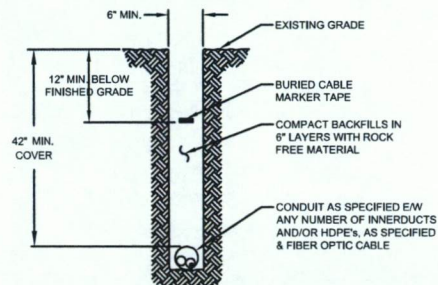
REVISIONS			
NO.	DATE	DESCRIPTION	BY
1	12/03/17	1ST REVISION	RS

EXCEPT AS MAY BE OTHERWISE PROVIDED BY CONTRACT, THESE DRAWINGS AND SPECIFICATIONS SHALL REMAIN THE PROPERTY OF MC COMMUNICATIONS SERVICES INC. NOT BE REPRODUCED, COPIED, OR USED FOR ANY PURPOSE WITHOUT SPECIFIC WRITTEN PERMISSION.

SCALE
HORIZONTAL: 1"= N/A
VERTICAL: 1"= N/A
MP TO MP
SHEET 05 OF 50
FILE: ECC-KINGSPONT

TYPICAL DETAIL "B"
CROSS SECTION OF PROPOSED HDPE

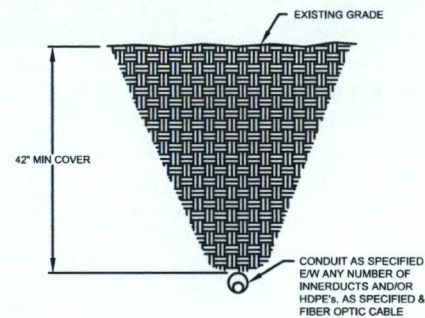
TRENCH & PLACE CONDUIT



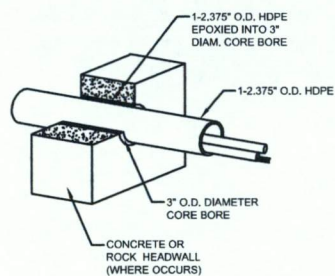
CROSS SECTION OF PROPOSED HDPE



DIRECTIONAL BORE CROSS SECTION FOR CONDUIT



3" CORE BORE



NOTE:
EPOXY GROUT IS USED AT BOTH ENDS OF CORE BORE TO
SEAL GAP BETWEEN 2.375" CONDUIT AND PVC SLEEVE.

PROJECT:

HOUSTON, TX

HO 0012-108997-KINGSPPOINT LATERAL

HO 0012-108997

McImetro
ACCESS TRANSMISSION SERVICES
CORPORATION

OUTSIDE PLANT CONSTRUCTION

TITLE: FIBER OPTIC ROUTE
HO 0012-108997-KINGSPONT LATERAL
HOUSTON, TX

DATE: 10-26-2017

ENGINEER: EAGLE EYE

DRAWN BY: ROBERT SANTOS

REVISIONS

[illegible]

EXCEPT AS MAY BE OTHERWISE PROVIDED BY CONTRACT, THESE DRAWINGS AND SPECIFICATIONS SHALL REMAIN THE PROPERTY OF MCI COMMUNICATIONS SERVICES INC. BOTH BEING ISSUED IN STRICT CONFIDENCE AND SHALL NOT BE REPRODUCED, COPIED, OR USED FOR ANY PURPOSE WITHOUT SPECIFIC WRITTEN PERMISSION.

SCALE

HORIZONTAL: 1"= N/A

VERTICAL: 1"= N/A

MP _____ TO MP _____

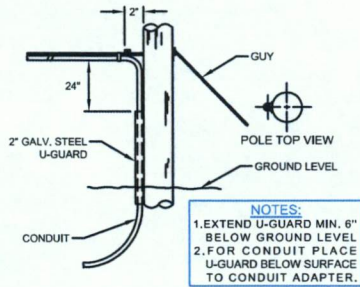
SHEET 06 OF 5

FILE: ECC-KINGSPPOINT

GENERAL AERIAL CONSTRUCTION DETAILS

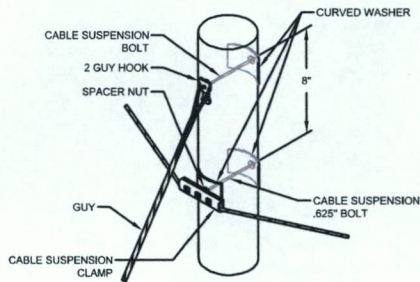
TYPICAL DETAIL "A"

POLE ARRANGEMENT FOR
AERIAL TO BURIED



TYPICAL DETAIL "D"

SUSPENSION STRAND - PULL TOWARD
POLE - LESS THAN 5 FEET



TYPICAL DETAIL "G"

JOINING 045 LASHING WIRE



FORMING WIRE OVER
STUD OF CLAMP

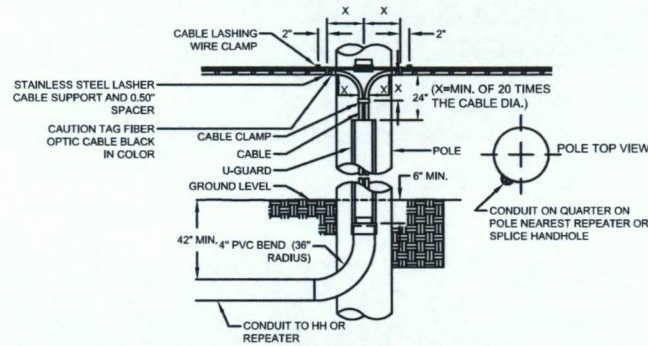
REMOVE ANY SLACK IN THE LASHING WIRE BY MAINTAINING A PULL ON THE WIRE AND TAPPING THE STRAND SHARPLY. THEN FORM THE WIRE OVER THE STUD AND TIGHTEN THE NUT. CUT THE FREE END OF THE LASHING WIRE OFF 0.75\"/>

FORMING LASHING WIRE
AROUND STRAND

FORM THE LASHING WIRE AROUND THE STRAND AND PLACE IT BELOW THE STUD AND BETWEEN THE SECOND WASHER AND STUD SHOULDER.

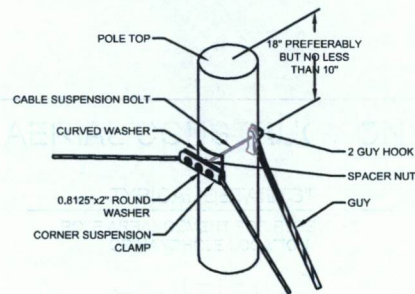
TYPICAL DETAIL "B"

POLE ARRANGEMENT FOR REPEATER
OR HANDHOLE LOCATION



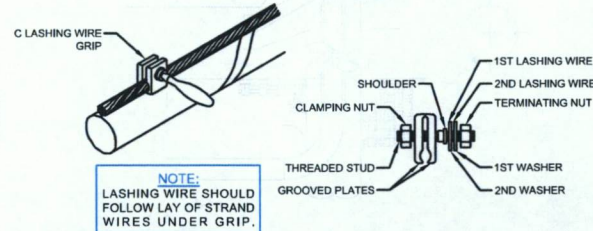
TYPICAL DETAIL "E"

SUSPENSION STRAND - PULL AWAY
FROM POLE - 5 FEET OR MORE



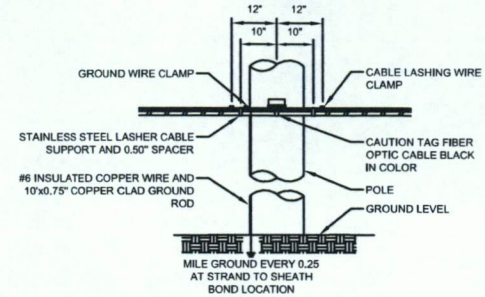
TYPICAL DETAIL "H"

LASHING WIRE GRIP AND CLAMP



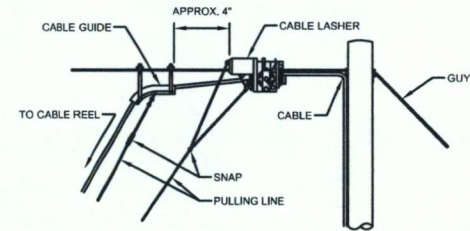
TYPICAL DETAIL "C"

TYPICAL CABLE & HARDWARE
INSTALLATION



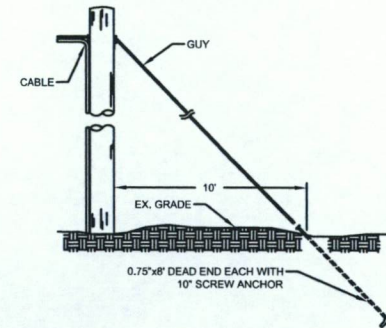
TYPICAL DETAIL "F"

TYPICAL ARRANGEMENT OF
CABLE LASHER AND CABLE GUIDE



TYPICAL DETAIL "I"

ANCHOR & DOWN GUY



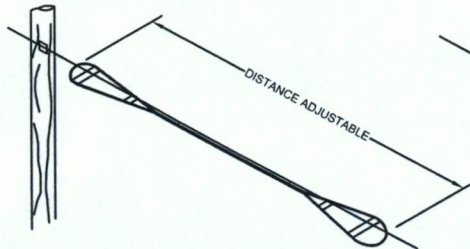
PROJECT:

HOUSTON, TX

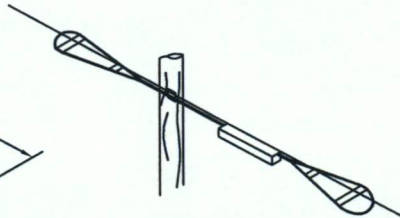
HO 0012-108997-KINGSPONT LATERAL

HO 0012-108997

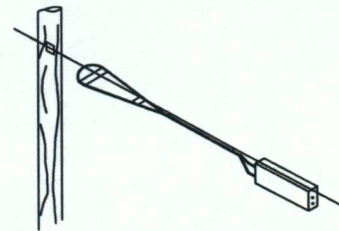
RESERVE CABLE LENGTH STRAND STORAGE APPLICATION



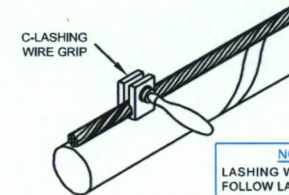
IN-LINE SPLICE APPLICATION



BUTT SPLICE APPLICATION

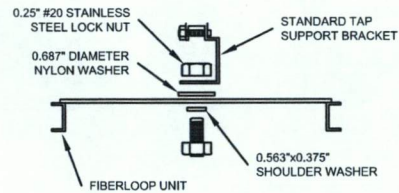


LASHING WIRE GRIP AND CLAMP C-LASHING
WIRE GRIP INSTALLED ON STRAND

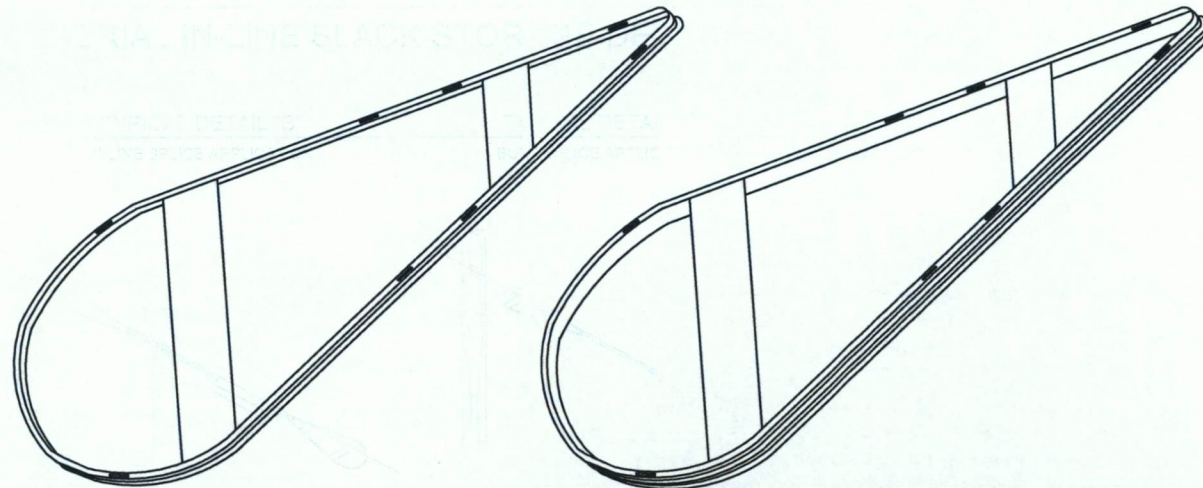


NOTE:
LASHING WIRE SHOULD FOLLOW LAY OF STRAND WIRES UNDER GRIP.

HARDWARE KIT



SINGLE & DOUBLE FIBER LOOPS



HOUSTON, TX

HO 0012-108997-KINGSPPOINT LATERAL

MCImetro
ACCESS TRANSMISSION SERVICES
CORPORATION

OUTSIDE PLANT CONSTRUCTION

HO 0012-108997-KINGSPONT LATERAL
HOUSTON, TX

DATE: 10-26-2017

ENGINEER: EAGLE EYE

DRAWN BY: ROBERT SANTOS

REVISIONS

[illegible]

EXCEPT AS MAY BE OTHERWISE PROVIDED BY CONTRACT, THESE DRAWINGS AND SPECIFICATIONS SHALL REMAIN THE PROPERTY OF MCI COMMUNICATIONS SERVICES INC. BOTH BEING ISSUED IN STRICT CONFIDENCE AND SHALL NOT BE REPRODUCED, COPIED, OR USED FOR ANY PURPOSE WITHOUT SPECIFIC WRITTEN PERMISSION.

SCALE

HORIZONTAL: 1"= N/A

VERTICAL: 1"= N/A

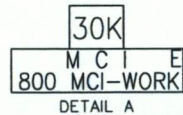
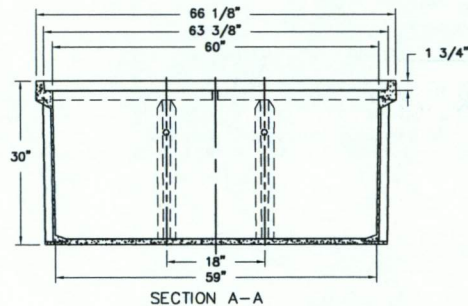
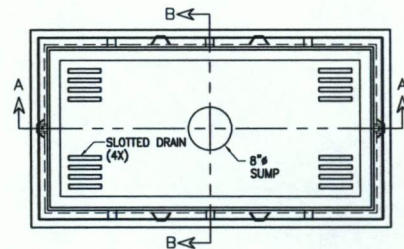
MP _____ TO MP _____

SHEET 68 OF 50

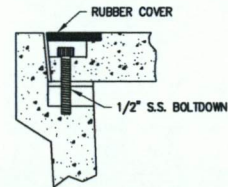
FILE: ECC-KINGSPPOINT

30" x 60" x 30" 30K STANDARD HANDHOLE DETAILS

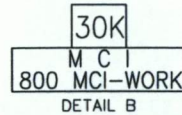
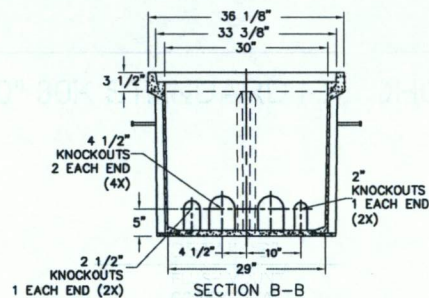
DETAIL "A"
LOCKING DEVICE
CROSS SECTION



DETAIL "B"
FLUSH MOUNT
COVER DETAIL



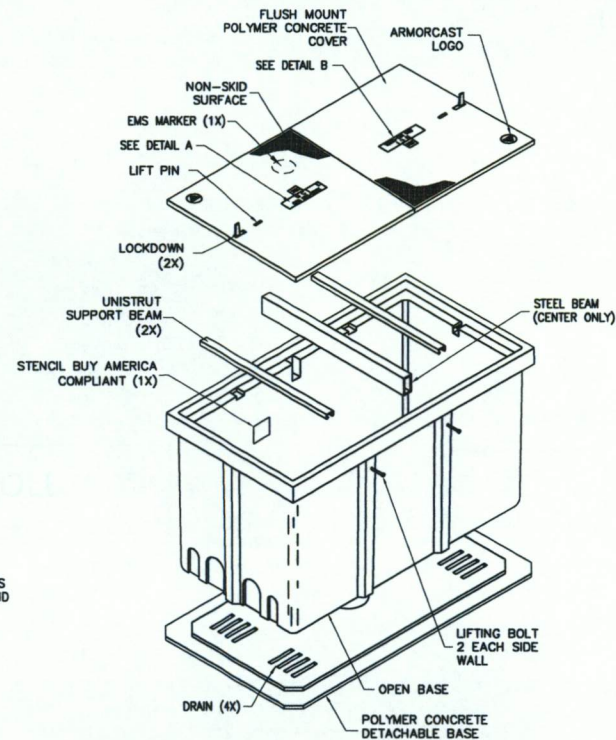
FLUSH MOUNT COVER DETAIL



SEALED PLASTIC BAG PLACED INSIDE VAULT TO CONTAIN

ITEM	QTY	
1	(1)	JOHNNY LOCK KEY
2	(2)	S.S. JOHNNY BOLTS W/FLAT WASHER.
3		SHRINK WRAP COVERS TO FRAME FOR PACKAGING.

DETAIL "C"
EXPLODED ISOMETRIC DETAIL



30K STANDARD HANDHOLE
30"x60"x30" POLYMER CONCRETE FLUSH MOUNT ASSEMBLY
MEETS SCTE/ANSI 77-TIER 22 LOADING CRITERIA
ADDITIONAL REQUIREMENTS:
DESIGNED LOAD: 30,000 LBS
MINIMUM FAILURE LOAD: 45,000 LBS



PROJECT:
HOUSTON, TX
HO 0012-108997-KINGSPONT LATERAL
HO 0012-108997

Mcimetro
ACCESS TRANSMISSION SERVICES
CORPORATION
OUTSIDE PLANT CONSTRUCTION
TITLE: FIBER OPTIC ROUTE
HO 0012-108997-KINGSPONT LATERAL
HOUSTON, TX

DATE: 10-26-2017
ENGINEER: EAGLE EYE
DRAWN BY: ROBERT SANTOS

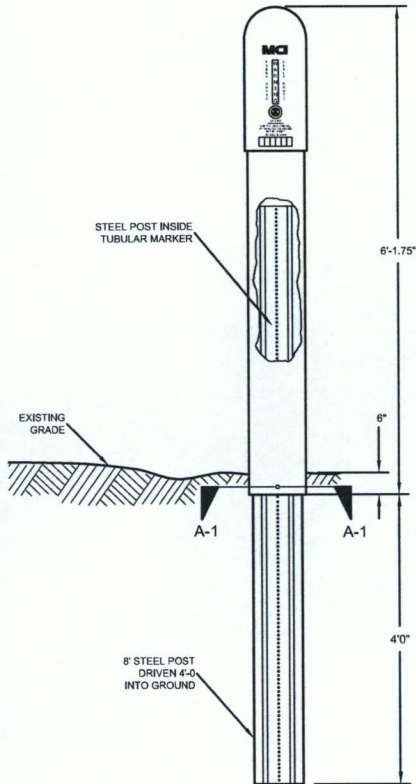
REVISIONS			
No.	DATE	DESCRIPTION	BY
1	2/23/17	1ST REVISION	RS

EXCEPT AS MAY BE OTHERWISE PROVIDED BY CONTRACT, THESE DRAWINGS AND SPECIFICATIONS SHALL REMAIN THE PROPERTY OF MCI COMMUNICATIONS SERVICES INC. BOTH BEING ISSUED IN STRICT CONFERENCE AND SHALL NOT BE REPRODUCED, COPIED, OR USED FOR ANY PURPOSE WITHOUT SPECIFIC WRITTEN PERMISSION.

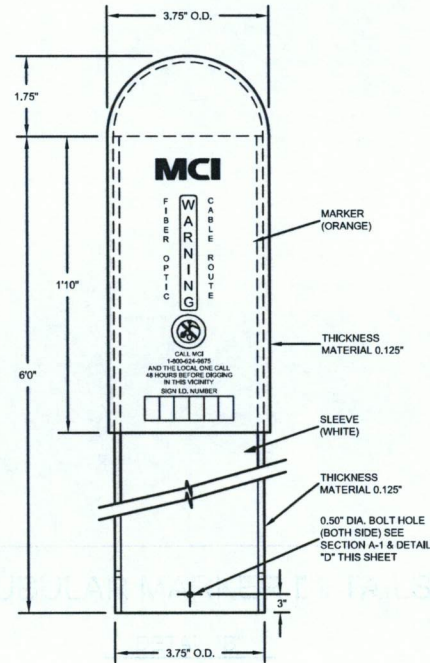
SCALE
HORIZONTAL: 1"= N/A
VERTICAL: 1"= N/A
MP TO MP
SHEET 7 OF 30
FILE: ECC-KINGSPONT

TUBULAR MARKER DETAILS

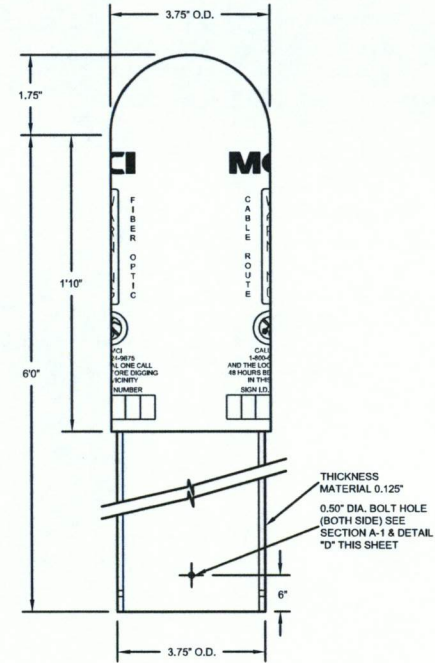
DETAIL "A"
INSTALLATION VIEW



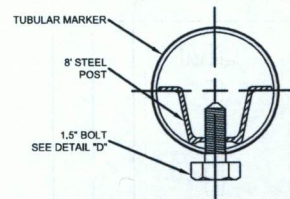
DETAIL "B"
FRONT VIEW



DETAIL "C"
SIDE VIEW



SECTION A-1
TUBULAR MARKER



DETAIL "D"
1.5" BOLT



PROJECT:
HOUSTON, TX
HO 0012-108997-KINGSPONT LATERAL
HO 0012-108997

McMetro
ACCESS TRANSMISSION SERVICES
CORPORATION
OUTSIDE PLANT CONSTRUCTION
TITLE: FIBER OPTIC ROUTE
HO 0012-108997-KINGSPONT LATERAL
HOUSTON, TX

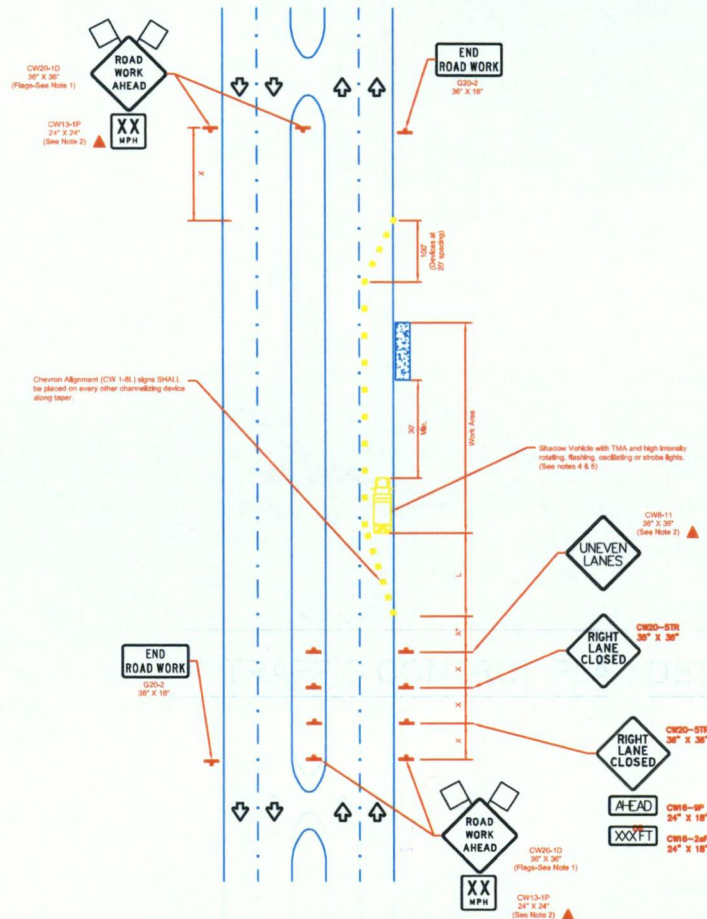
DATE: 10-26-2017
ENGINEER: EAGLE EYE
DRAWN BY: ROBERT SANTOS

REVISIONS			
NO.	DATE	DESCRIPTION	BY
1	12/03/17	1ST REVISION	RS

EXCEPT AS MAY BE OTHERWISE PROVIDED BY CONTRACT, THESE DRAWINGS AND SPECIFICATIONS SHALL REMAIN THE PROPERTY OF MCI COMMUNICATIONS SERVICES INC. BOTH BEING ISSUED IN STRICT CONFIDENCE AND SHALL NOT BE REPRODUCED, COPIED, OR USED FOR ANY PURPOSE WITHOUT SPECIFIC WRITTEN PERMISSION.

SCALE
HORIZONTAL: 1"= N/A
VERTICAL: 1"= N/A
MP TO MP
SHEET 7A OF 80
FILE: ECC-KINGSPONT

TRAFFIC CONTROL PLAN DETAILS



RIGHT LANE CLOSURE (4 LANE BOULEVARD ROAD)

NO.	REVISIONS	DATE	NAME
1	UPDATED DEPARTMENT NAME & GENERAL NOTES	10/26/17	MSB
2			
3			
4			

HARRIS COUNTY
ENGINEERING DEPARTMENT



TRAFFIC CONTROL PLAN SECTION SHALL BE COMPLETED BY ENGINEER

ROADWAY	POSTED SPEED	TAPER LENGTH	SPACING CHANNELIZING DEVICES		SIGN SPACING	BUFFER SPACE
			TAPER	TANGENT		
W BELFORT AVE	45 MPH	540'	40'	90'	320'	195'
ELDRIDGE PKWY	45 MPH	540'	40'	90'	320'	195'
RICHMOND AVE	45 MPH	540'	40'	90'	320'	195'
BISCHNET	45 MPH	540'	40'	90'	320'	195'
S DAIRY ASHFORD RD	45 MPH	540'	40'	90'	320'	195'

LEGEND	
Type 3 Barricade	Channelizing Devices
Heavy Work Vehicle	Truck Mounted Attenuator (TMA)
Trailer Mounted Flashing Arrow Board	Portable Changeable Message Sign (PCMS)
Sign	Traffic Flow
Flag	Flagger

Posted Speed	Formula	Minimum Desirable Taper Length, "L"		Suggested Maximum Spacing of Channelizing Devices		Minimum Sign Spacing, "S"	Suggested Longitudinal Buffer Space, "B"
		15' Offset	15' Offset	On a Taper	On a Tangent		
30	$L = \frac{1.47 S^2}{a}$	150'	165'	30'	60'	120'	90'
35		205'	225'	30'	75'	160'	120'
40		265'	295'	40'	90'	240'	150'
45		330'	365'	40'	90'	320'	190'
50		400'	440'	50'	120'	400'	240'
55		475'	525'	50'	110'	500'	290'
60		560'	610'	60'	120'	600'	350'
65		650'	715'	60'	130'	700'	410'
70		750'	825'	70'	140'	800'	475'
75		860'	950'	70'	150'	900'	540'

* Conventional Roads Only
* Taper lengths have been rounded off.
* L = Length of Taper (FT) * W = Width of Offset (FT) * S = Posted Speed (MPH)

GENERAL NOTES

- Flags attached to signs where shown are OPTIONAL.
- All traffic control devices illustrated are REQUIRED, except those denoted with the triangle symbol are OPTIONAL.
- Buffer work vehicles or other equipment should be parked near the right-of-way line and not parked on the paved shoulder.
- A Shadow Vehicle with a TMA should be used anytime it can be positioned 30 to 100 feet in advance of the area of crew exposure without adversely affecting the performance or quality of the work. If workers are no longer present but road or work conditions require the traffic control to remain in place, Type 3 Barricades or other channelizing devices may be substituted for the Shadow Vehicle and TMA.
- Additional Shadow Vehicles with TMAs may be positioned off the paved surface, next to those shown in order to protect other work spaces.
- Contractor shall provide and install traffic control devices in conformance with part VI of Texas Manual on Uniform Traffic Control Devices (TMUTCD) - Latest edition with revisions during construction.
- No lanes shall be blocked from 7am to 5pm and 4pm to 8:30pm Monday thru Friday.
- Off duty police officers/flaggers are required to direct traffic when applicable.
- If project is within 400 feet from a signalized intersection, the Contractor shall contact Harris County Engineering Department, Traffic Signal Maintenance at (713) 891-3210 five (5) days prior to the start of construction.

TEO, LLC
5510 Community Drive
Houston, Texas
77005
281-636-5122 OFFICE
713-666-6334 FAX
teo@teo.com
FIRM # F-8978



SIGNATURE: [Signature]
8/17/2018

PROJECT TITLE

UNOWN BY:	VZW-56 JARVIS	HOED STANDARD
DATE:	8/17/2018	
SCALE:	TRAFFIC CONTROL PLAN (RIGHT LANE CLOSURE)	41
DATE:	8/17/2018	
APPROVED BY:		8A/15



PROJECT:

HOUSTON, TX
HO 0012-108997-KINGSPONT LATERAL
HO 0012-108997

McMetro
ACCESS TRANSMISSION SERVICES
CORPORATION

OUTSIDE PLANT CONSTRUCTION

TITLE: FIBER OPTIC ROUTE

HO 0012-108997-KINGSPONT LATERAL
HOUSTON, TX

DATE: 10-26-2017

ENGINEER: EAGLE EYE

DRAWN BY: ROBERT SANTOS

REVISIONS

No.	DATE	DESCRIPTION	BY
1	10/23/17	1ST REVISION	RS
2			
3			
4			

EXCEPT AS MAY BE OTHERWISE PROVIDED BY CONTRACT, THESE DRAWINGS AND SPECIFICATIONS SHALL REMAIN THE PROPERTY OF MCC COMMUNICATIONS SERVICES INC. BOTH BEING ISSUED IN STRICT CONFIDENCE AND SHALL NOT BE REPRODUCED, COPIED, OR USED FOR ANY PURPOSE WITHOUT SPECIFIC WRITTEN PERMISSION.

SCALE

HORIZONTAL: 1"= N/A

VERTICAL: 1"= N/A

MP TO MP

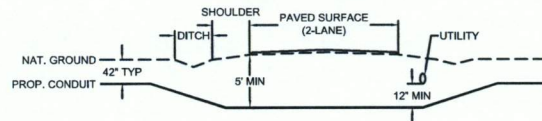
SHEET 8 OF 50

FILE: ECC-KINGSPONT

ROAD CROSSING DETAILS

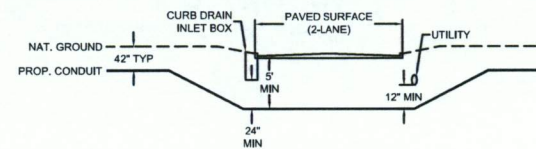
TYPICAL DETAIL "A"

TWO LANE - ASPHALT ROAD - NO CURB



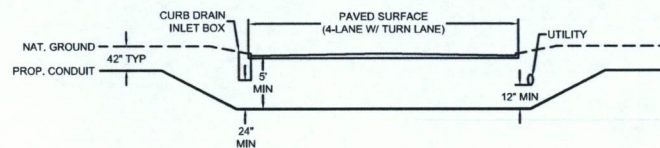
TYPICAL DETAIL "B"

TWO LANE - CURBED ROAD



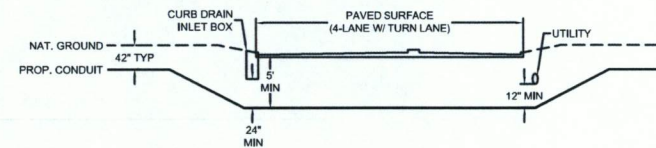
TYPICAL DETAIL "C"

FOUR LANE (W/ TURN LANE) - CURBED ROAD - NO MEDIAN



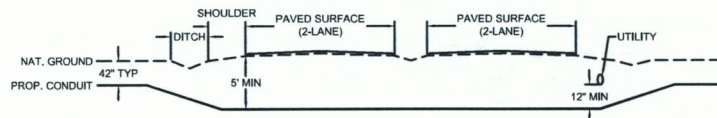
TYPICAL DETAIL "D"

FOUR LANE (W/ TURN LANE) - CURBED ROAD - WITH MEDIAN



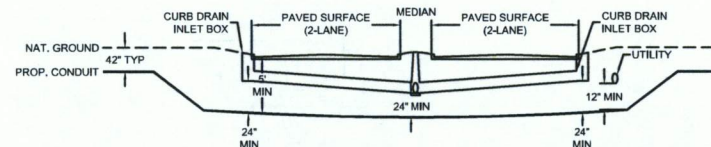
TYPICAL DETAIL "E"

4 LANE - SPLIT ASPHALT ROAD - NO CURB



TYPICAL DETAIL "F"

4 LANE - SPLIT CURBED ROAD



PROJECT:

HOUSTON, TX

HO 0012-108997-KINGSPONT LATERAL

HO 0012-108997

McMetro
ACCESS TRANSMISSION SERVICES
CORPORATION

OUTSIDE PLANT CONSTRUCTION
TITLE: FIBER OPTIC ROUTE

HO 0012-108997-KINGSPONT LATERAL
HOUSTON, TX

DATE: 10-26-2017

ENGINEER: EAGLE EYE

DRAWN BY: ROBERT SANTOS

REVISIONS

No.	DATE	DESCRIPTION	BY
1	12/03/17	1ST REVISION	RS

EXCEPT AS MAY BE OTHERWISE PROVIDED BY CONTRACT, THESE DRAWINGS AND SPECIFICATIONS SHALL REMAIN THE PROPERTY OF MCM COMMUNICATIONS SERVICES INC. NOT BE REPRODUCED, COPIED, OR USED FOR ANY PURPOSE WITHOUT SPECIFIC WRITTEN PERMISSION.

SCALE

HORIZONTAL: 1"= N/A

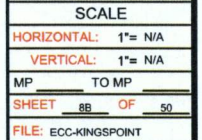
VERTICAL: 1"= N/A

MP TO MP

SHEET 8A OF 50

FILE: ECC-KINGSPONT

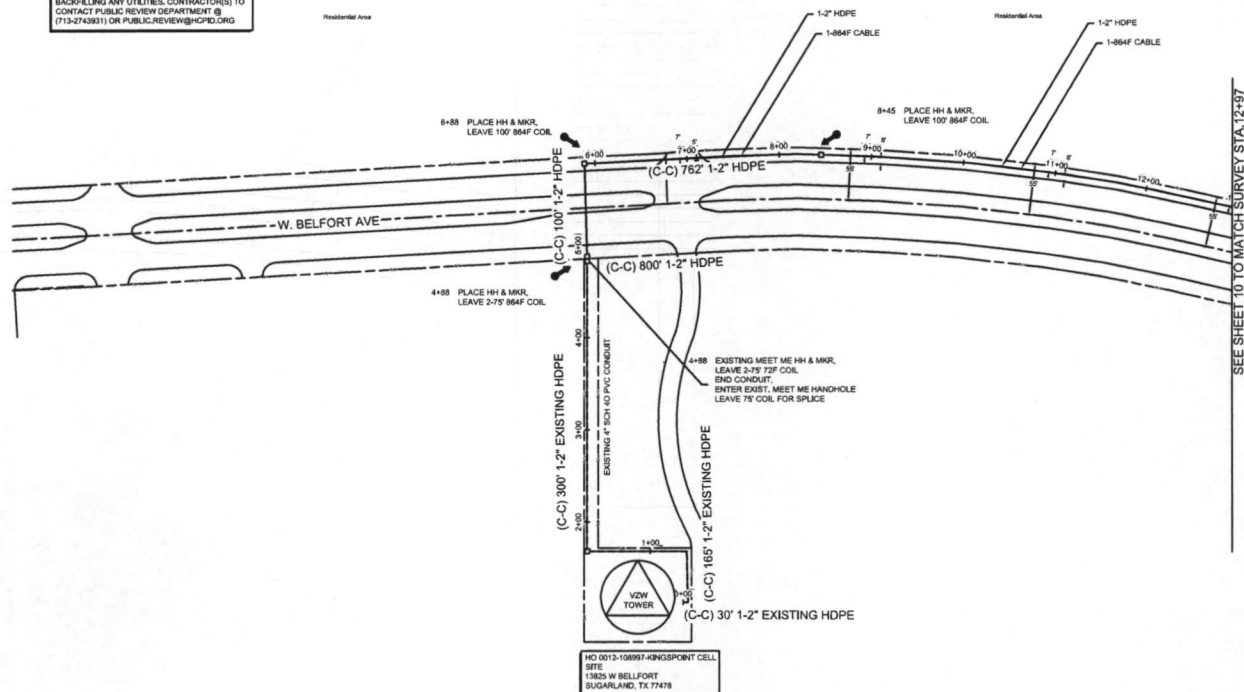
HO 0012-108997-KINGSPPOINT



HOUSTON, TX
HARRIS COUNTY



48 HOUR NOTICE:
CONTRACTOR SHALL NOTIFY HARRIS COUNTY
PRIOR TO COMMENCING CONSTRUCTION AND/OR
BACKFILLING ANY UTILITIES. CONTRACTOR(S) TO
CONTACT PUBLIC REVIEW DEPARTMENT @
(713)2743931 OR PUBLIC.REVIEW@HCPD.ORG



PROJECT:

HOUSTON, TX
HO 0012-108997-KINGSPOINT
HO 0012-108997
CLASSIFICATION NO.
PLACE HANDHOLE 2
PROP. 1-2" HDPE 1511
PULL 1-864F CABLE 1761
PLACE MARKER 2
PULL 1-73F CABLE 1126
EXISTING HDPE 488

ACCESS TRAIL: MICHAELSON SERVICES CORPORATION

OUTSIDE PLANT CONSTRUCTION

TITLE: FIBER OPTIC ROUTE

HO 0012-108997-KINGSPOINT

HOUSTON, TX

DATE: 1/30/2018
ENGINEER: EAGLE EYE
DRAWN BY: ROBERT SANTOS

REVISIONS

NO.	DATE	DESCRIPTION	BY

EXCEPT AS MAY BE OTHERWISE PROVIDED BY CONTRACT, THESE DRAWINGS ARE PREPARED BY THE ENGINEER, AND THE CONTRACTOR SHALL BE RESPONSIBLE FOR THE PROPER INSTALLATION AND MAINTENANCE OF THE UTILITIES SHOWN HEREON. THE CONTRACTOR SHALL BE RESPONSIBLE FOR THE PROPER INSTALLATION AND MAINTENANCE OF THE UTILITIES SHOWN HEREON. THE CONTRACTOR SHALL BE RESPONSIBLE FOR THE PROPER INSTALLATION AND MAINTENANCE OF THE UTILITIES SHOWN HEREON.

SCALE

HORIZONTAL: 1"= 50'
VERTICAL: 1"= 50'
MP TO MP
SHEET 9 OF 50
FILE: ECC-KINGSPOINT

UNDERGROUND UTILITIES HAVE BEEN PLOTTED FROM AVAILABLE RECORDS AND FIELD OBSERVATIONS BUT ARE NOT NECESSARILY EXACT. IT IS THE CONTRACTOR'S RESPONSIBILITY TO FIELD LOCATE ALL UNDERGROUND OBSTRUCTIONS AND UTILITIES PRIOR TO CONSTRUCTION. COMPLETE REPAIR OF ANY AND ALL DAMAGES INCURRED SHALL BE AT THE EXPENSE OF THE CONTRACTOR.

RIGHT OF WAY LINES WERE ESTABLISHED BY RESEARCH OF PUBLIC INFORMATION. NO BOUNDARY SURVEY OR PROPERTY LINE SURVEY WAS ESTABLISHED BY RIGHT OF WAY BOUNDARY MUST BE FIELD VERIFIED BY A REGISTERED PROFESSIONAL LAND SURVEYOR TO ACCURATELY VERIFY RIGHT OF WAY AND PROPERTY LINES PRIOR TO CONSTRUCTION.

III CAUTION III
PIPELINE SERVICE LINES
THRU THIS AREA HAVE NOT BEEN
IDENTIFIED NOR INDICATED.

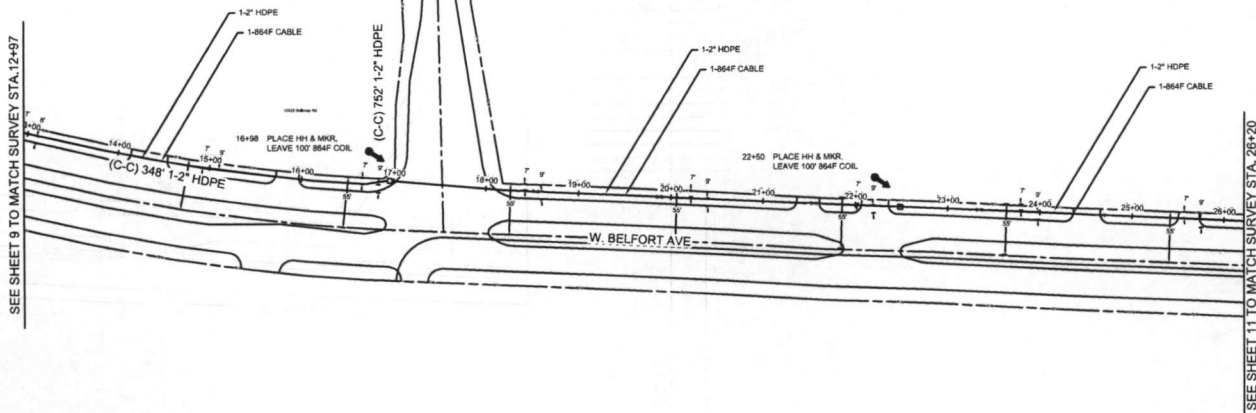


CALL BEFORE YOU DIG
1-800-545-4000
48 HOURS NOTICE REQUIRED

HOUSTON, TX
HARRIS COUNTY



48 HOUR NOTICE
CONTRACTOR SHALL NOTIFY HARRIS COUNTY
PRIOR TO COMMENCING CONSTRUCTION AND/OR
BACKFILLING ANY UTILITIES. CONTRACTOR(S) TO
CONTACT PUBLIC REVIEW DEPARTMENT @
(713)2743531) OR PUBLIC.REVIEW@HCPID.ORG



SEE SHEET 9 TO MATCH SURVEY STA. 12+97

SEE SHEET 11 TO MATCH SURVEY STA. 26+20

PROJECT:	HOUSTON, TX
HO 0012-108997-KINGSPOINT	
HO 0012-108997	
CLASSIFICATION NO.	4
PLACE HANDHOLE	3075
PULL 1-864F CABLE	2475
PLACE MARKER	4

MCLENNAN'S
TRANSMISSION SERVICES
CORPORATION
OUTSIDE PLANT CONSTRUCTION
TITLE: FIBER OPTIC ROUTE
HO 0012-108997-KINGSPOINT
HOUSTON, TX

DATE: 1/30/2018
ENGINEER: EAGLE EYE
DRAWN BY: ROBERT SANTOS

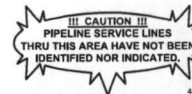
REVISIONS			
NO.	DATE	DESCRIPTION	BY

DESIGNER IS NOT RESPONSIBLE FOR THE ACCURACY OF THE INFORMATION PROVIDED BY CONTRACTOR. DESIGNER HAS CONDUCTED VISUAL SURVEY OF THE AREA AND HAS NOT CONDUCTED A FIELD SURVEY. CONTRACTOR SHALL VERIFY THE LOCATION AND DEPTH OF ALL UTILITIES PRIOR TO CONSTRUCTION. CONTRACTOR SHALL BE RESPONSIBLE FOR ANY DAMAGE TO EXISTING UTILITIES OR STRUCTURES. CONTRACTOR SHALL BE RESPONSIBLE FOR OBTAINING ALL NECESSARY PERMITS AND NOTICES PRIOR TO CONSTRUCTION. CONTRACTOR SHALL BE RESPONSIBLE FOR OBTAINING ALL NECESSARY NOTICES PRIOR TO CONSTRUCTION. CONTRACTOR SHALL BE RESPONSIBLE FOR OBTAINING ALL NECESSARY NOTICES PRIOR TO CONSTRUCTION.

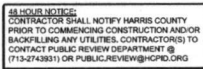
SCALE	
HORIZONTAL: 1"= 50'	
VERTICAL: 1"= 50'	
MP TO MP	
SHEET 10 OF 50	
FILE: ECC-KINGSPOINT	

UNDERGROUND UTILITIES HAVE BEEN PLOTTED FROM AVAILABLE RECORDS AND FIELD OBSERVATIONS BUT ARE NOT NECESSARILY EXACT. IT IS THE CONTRACTOR'S RESPONSIBILITY TO FIELD LOCATE ALL UNDERGROUND OBSTRUCTIONS AND UTILITIES PRIOR TO CONSTRUCTION. COMPLETE REPAIR OF ANY AND ALL DAMAGES INCURRED SHALL BE AT THE EXPENSE OF THE CONTRACTOR.

RIGHT OF WAY LINES WERE ESTABLISHED BY RESEARCH OF PUBLIC INFORMATION. NO BOUNDARY SURVEY OR PROPERTY LINE SURVEY WAS ESTABLISHED BY RIGHT OF WAY BOUNDARY MUST BE FIELD VERIFIED BY A REGISTERED PROFESSIONAL LAND SURVEYOR TO ACCURATELY VERIFY RIGHT OF WAY AND PROPERTY LINES PRIOR TO CONSTRUCTION.



CALL BEFORE YOU DIG
1-800-543-4005
48 HOURS NOTICE REQUIRED



SEE SHEET 10 TO MATCH SURVEY STA. 26+20

29+60 PLACE HH & MKR,
LEAVE 100' 864F COIL.

-SYNOTT RD.

W. BELFORT AVE

13415 W Bellfort Blvd

UNDERGROUND UTILITIES HAVE BEEN PLOTTED FROM AVAILABLE RECORDS AND FIELD OBSERVATIONS BUT ARE NOT NECESSARILY EXACT. IT IS THE CONTRACTORS RESPONSIBILITY TO FIELD LOCATE ALL UNDERGROUND OBSTRUCTIONS AND UTILITIES PRIOR TO CONSTRUCTION. COMPLETE REPAIR OF ANY AND ALL DAMAGES INCURRED SHALL BE AT THE EXPENSE OF THE CONTRACTOR.

RIGHT OF WAY LINES WERE ESTABLISHED BY RESEARCH OF PUBLIC INFORMATION.
NO BOUNDARY SURVEY OR PROPERTY LINE SURVEY WAS ESTABLISHED BY
_____. RIGHT OF WAY BOUNDARY MUST BE FIELD VERIFIED
BY A REGISTERED PROFESSIONAL LAND SURVEYOR TO ACCURATELY VERIFY
RIGHT OF WAY AND PROPERTY LINES PRIOR TO CONSTRUCTION.

!!! CAUTION !!!
PIPELINE SERVICE LINES
THRU THIS AREA HAVE NOT BEEN
IDENTIFIED NOR INDICATED.



CALL BEFORE YOU DIG
1-800-545-6005
48 HOURS NOTICE REQUIRED

48 HOURS NOTICE REQUIRED

[illegible]