

**REVIEW BY FORT BEND COUNTY
COMMISSIONERS COURT**

14S
**Fort Bend County
Engineering Department**
301 Jackson Suite 401
Richmond, Texas 77469
281.633.7500
Permits@fortbendcountytx.gov

- Right of Way Permit
- Commercial Driveway Permit

Permit No: 2018-18736

Applicant: PS Light Wave, Inc

Job Location Site: Harlem Road, Richmond, TX 77407

Bond No. Date of Bond: 12/13/2016 Amount: \$50,000.00

The above applicant came to make use of certain Fort Bend County property subject to, "The Order Regulating the Laying, Construction, Maintenance, and Repair of Buried Cables, Conduits, and Pole Lines, In, Under, Across or Along Roads, Streets, Highways, and Drainage Ditches in Fort Bend County, Texas, Under the Jurisdiction of the Commissioners Court of Fort Bend County, Texas," as passed by the Commissioners Court of Fort Bend County, Texas, of the Minutes of the Commissioners Court of Fort Bend County, Texas, to the extent that such order is not inconsistent with Chapter 181, Vernon's Texas Statutes and Codes Annotated.

Notes:

1. Evidence of review by the Commissioners Court must be kept on the job site and failure to do so constitutes grounds for job shutdown.
2. Written notices are required:
 - a. 48 hours in advance of construction start up, and
 - b. When construction is completed and ready for final inspection, submit notification to Permit Administrator thru MyGovernmentOnline.org portal.
3. This permit expires one (1) year from date of permit if construction has not commenced.

On this 27th day of February, 2018, Upon Motion of Commissioner Meyers, seconded by Commissioner Patterson, duly put and carried, it is ORDERED, ADJUDGED AND DECREED that said notice of said above purpose is hereby acknowledged by the Commissioners Court of Fort Bend County, Texas, and that said notice be placed on record according to the regulation order thereof.

Signature

Presented to Commissioners Court and approved.

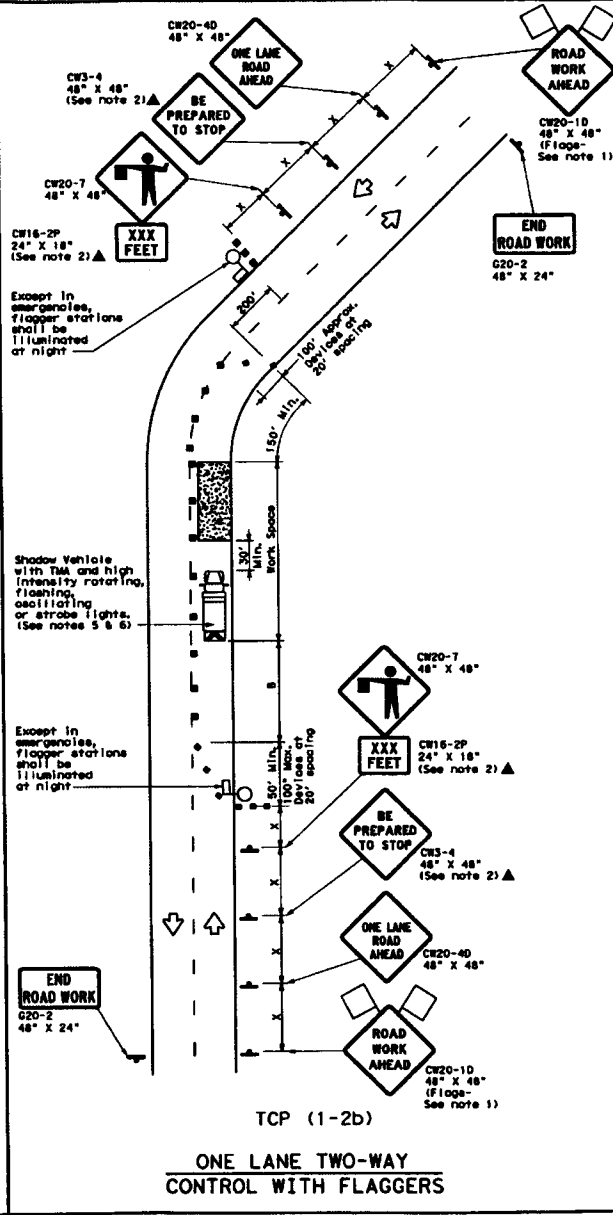
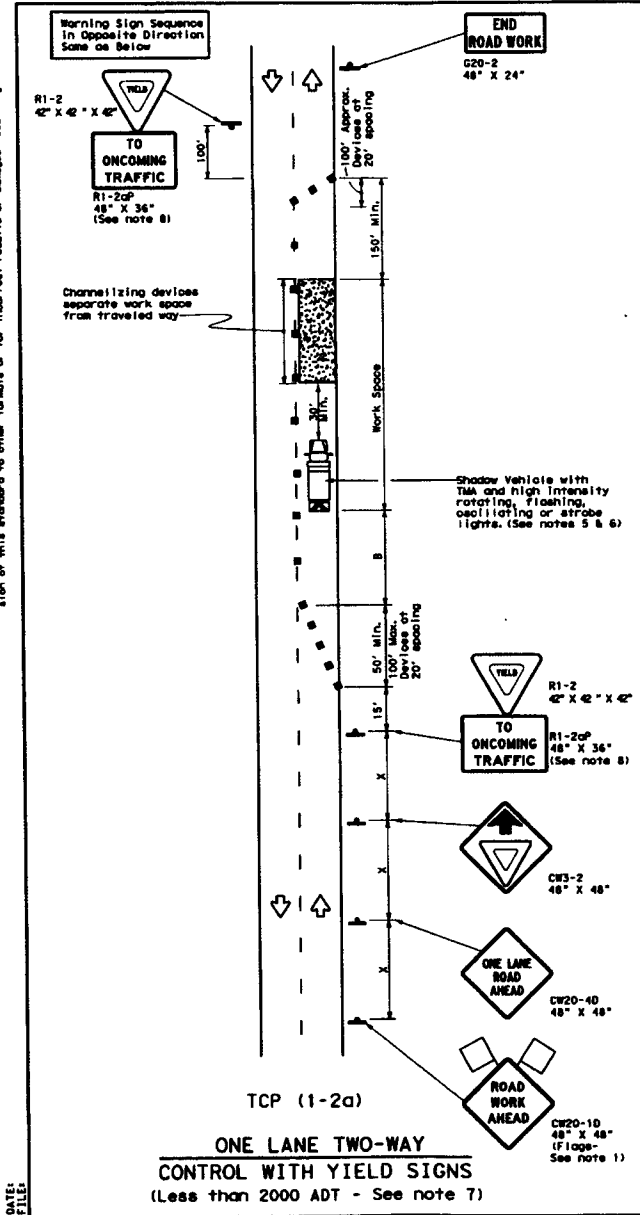
By: Charles O. Ay
County Engineer

Date Recorded 3-5-2018 Comm. Court No. 145

By: N/A
Drainage District Engineer/Manager

Clerk of Commissioners Court
By: Jonda Willis
Deputy

DISCLAIMER: The use of this standard is governed by the Texas Engineering Practice Act. It represents the minimum standard of care for the design of traffic control plans. It does not constitute a warranty of any kind, and the user assumes all liability for any errors or omissions resulting from its use.



LEGEND

	Type 3 Barricade		Channelizing Devices
	Heavy Work Vehicle		Truck Mounted Attenuator (TMA)
	Trailer Mounted Flashing Arrow Board		Portable Changeable Message Sign (PCMS)
	Sign		Traffic Flow
	Flag		Flagger

Posted Speed K	Formula	Minimum Desirable Taper Lengths K x X			Suggested Minimum Spacing of Channelizing Devices		Minimum Sign Spacing "S"	Suggested Longitudinal Buffer Space "B"	Stopping Sight Distance
		15' Offset	11' Offset	12' Offset	On a Taper	On a Tangent			
30	L = WS	150'	165'	160'	30'	60'	120'	90'	200'
35	L = WS	205'	225'	245'	35'	70'	160'	120'	250'
40	L = WS	265'	295'	320'	40'	80'	240'	155'	305'
45	L = WS	450'	495'	540'	45'	90'	320'	195'	360'
50	L = WS	500'	550'	600'	50'	100'	400'	240'	425'
55	L = WS	550'	605'	650'	55'	110'	500'	295'	495'
60	L = WS	600'	660'	720'	60'	120'	600'	350'	570'
65	L = WS	650'	715'	780'	65'	130'	700'	410'	645'
70	L = WS	700'	770'	840'	70'	140'	800'	475'	750'
75	L = WS	750'	825'	900'	75'	150'	900'	540'	820'

X Conventional Roads Only
 ** Taper lengths have been rounded off.
 L-Length of Taper (FT) W-Width of Offset (FT) S-Posted Speed (MPH)

TYPICAL USAGE

MOBILE	SHORT TERM		INTERMEDIATE TERM		LONG TERM
	DURATION	STATIONARY	STATIONARY	STATIONARY	
	✓		✓		

- GENERAL NOTES**
- Flags attached to signs where shown are REQUIRED.
 - All traffic control devices illustrated are REQUIRED, except those denoted with the triangle symbol may be omitted when stated elsewhere in the plans, or for routine maintenance work, when approved by the Engineer.
 - The CW3-4 "BE PREPARED TO STOP" sign may be installed after the CW20-40 "ONE LANE ROAD AHEAD" sign, but proper sign spacing shall be maintained.
 - Sign spacing may be increased or an additional CW20-10 "ROAD WORK AHEAD" sign may be used if advance warning ahead of the flagger or R1-2 "YIELD" sign is less than 1500 feet.
 - A Shadow Vehicle with a TMA should be used anytime it can be positioned 30 to 100 feet in advance of the area of crew exposure without adversely affecting the performance or quality of the work. If workers are no longer present but road or work conditions require the traffic control to remain in place, Type 3 barricades or other channelizing devices may be substituted for the Shadow Vehicle and TMA.
 - Additional Shadow Vehicles with TMAs may be positioned off the paved surface, next to those shown in order to protect wider work spaces.
- TCP (1-2a)**
- R1-2 "YIELD" sign traffic control may be used on projects with approaches that have adequate sight distance. For projects in urban areas, work spaces should be no longer than one half city block. In rural areas on roadways with less than 2000 ADT, work spaces should be no longer than 400 feet.
 - R1-2 "YIELD" sign with R1-2aP "TO ONCOMING TRAFFIC" plaque shall be placed on a support of a 7 foot minimum mounting height.
- TCP (1-2b)**
- Flaggers should use two-way radios or other methods of communication to control traffic.
 - Length of work space should be based on the ability of flaggers to communicate.
 - If the work space is located near a horizontal or vertical curve, the buffer distance should be increased in order to maintain adequate stopping sight distance to the flagger and a queue of stopped vehicles (see table above).
 - Channelizing devices on the center-line may be omitted when a pilot car is leading traffic and approved by the Engineer.
 - Flaggers should use 24" STOP/SLOW paddles to control traffic. Flags should be limited to emergency situations.

For construction or maintenance contract work, specific project requirements for shadow vehicles can be found in the project GENERAL NOTES for Item 502: Barricades, Signs and Traffic Handling.

Texas Department of Transportation
 Traffic Operations Division

TRAFFIC CONTROL PLAN
ONE-LANE TWO-WAY
TRAFFIC CONTROL

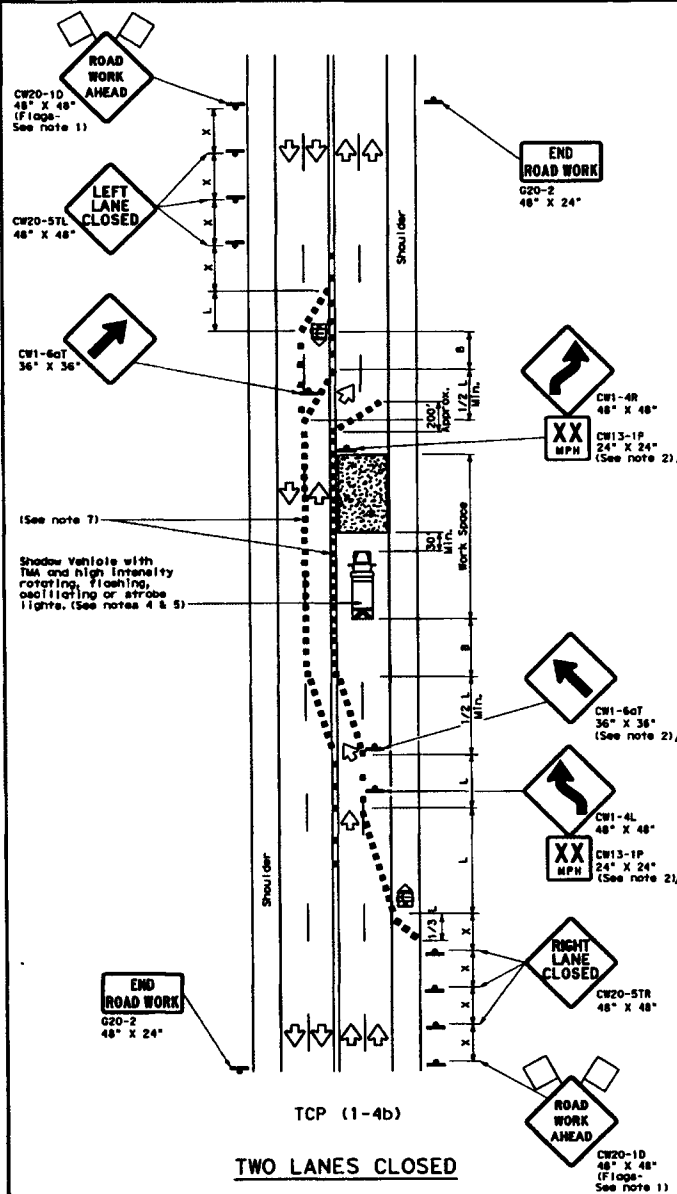
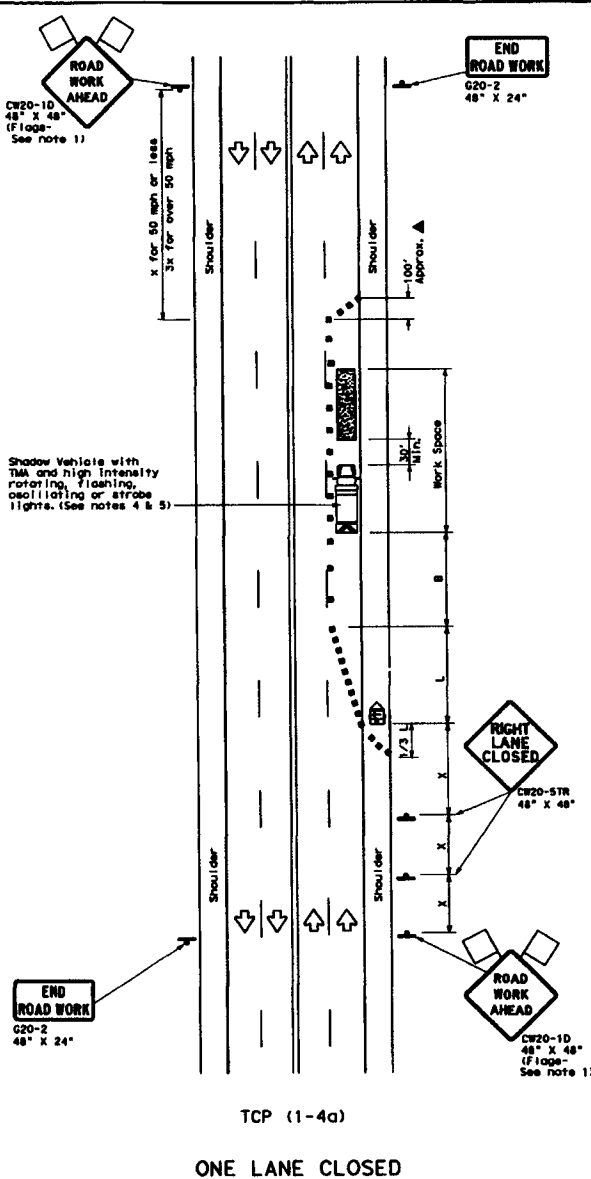
TCP (1-2)-12

REVISED	BY	DATE	BY	DATE	BY	DATE
4-90	1-12					
2-96						
1-97						
4-98						

152

DISCLAIMER: The use of this standard is governed by the "Texas Engineering Practice Act". No warranty of any kind is made by TxDOT for any purpose whatsoever. TxDOT assumes no responsibility for damages resulting from the use of this standard or other materials or for the most recent revision of standards published by the TTA.

DATE:
FILE:



LEGEND			
	Type 3 Barricade		Channelizing Devices
	Heavy Work Vehicle		Truck Mounted Attenuator (TMA)
	Trailer Mounted Flashing Arrow Board		Portable Changeable Message Sign (PCMS)
	Sign		Traffic Flow
	Flag		Flagger

Posted Speed #	Formula	Minimum Desirable Taper Lengths #'			Suggested Maximum Spacing of Channelizing Devices		Minimum Sign Spacing #'	Suggested Longitudinal Buffer Space #'
		10' Offset	11' Offset	12' Offset	On a Taper	On a Tangent		
30	L = WS ² / 60	150'	165'	180'	30'	60'	120'	90'
35		205'	225'	245'	35'	70'	160'	120'
40	L = WS	265'	295'	320'	40'	80'	240'	155'
45		450'	495'	540'	45'	90'	320'	195'
50	L = WS	500'	550'	600'	50'	100'	400'	240'
55		550'	605'	660'	55'	110'	500'	295'
60	L = WS	600'	660'	720'	60'	120'	600'	350'
65		650'	715'	780'	65'	130'	700'	410'
70	L = WS	700'	770'	840'	70'	140'	800'	475'
75		750'	825'	900'	75'	150'	900'	540'

* Conventional Roads Only
 ** Taper lengths have been rounded off.
 L=Length of Taper (FT) W=Width of Offset (FT) S=Posted Speed (MPH)

TYPICAL USAGE				
MOBILE	SHORT DURATION	SHORT TERM STATIONARY	INTERMEDIATE TERM STATIONARY	LONG TERM STATIONARY
	✓	✓		

GENERAL NOTES

- Flags attached to signs where shown are REQUIRED.
 - All traffic control devices illustrated are REQUIRED, except those denoted with the triangle symbol may be omitted when stated elsewhere in the plans, or for routine maintenance work, when approved by the Engineer.
 - The CW20-1D "ROAD WORK AHEAD" sign may be repeated if the visibility of the work zone is less than 1500 feet.
 - A Shadow Vehicle with a TMA should be used anytime it can be positioned 30 to 100 feet in advance of the area of crew exposure without adversely affecting the performance or quality of the work. If workers are no longer present but road or work conditions require the traffic control to remain in place, Type 3 Barricades or other channelizing devices may be substituted for the Shadow Vehicle and TMA.
 - Additional Shadow Vehicles with TMAs may be positioned off the paved surface, next to those shown in order to protect wider work areas.
- TCP (1-4a)**
- If this TCP is used for a left lane closure, CW20-57L "LEFT LANE CLOSED" signs shall be used and channelizing devices shall be placed on the centerline where needed to protect the work space from opposing traffic with the arrow panel placed in the closed lane near the end of the taper zone.
- TCP (1-4b)**
- Where traffic is directed over a yellow centerline, channelizing devices which separate two-way traffic should be spaced on tapers at 20' or 15' if posted speeds are 35 mph or slower, and for tangent sections, at 1/25 where S is the speed in mph. This tighter device spacing is intended for the areas of conflicting markings, not the entire work zone.

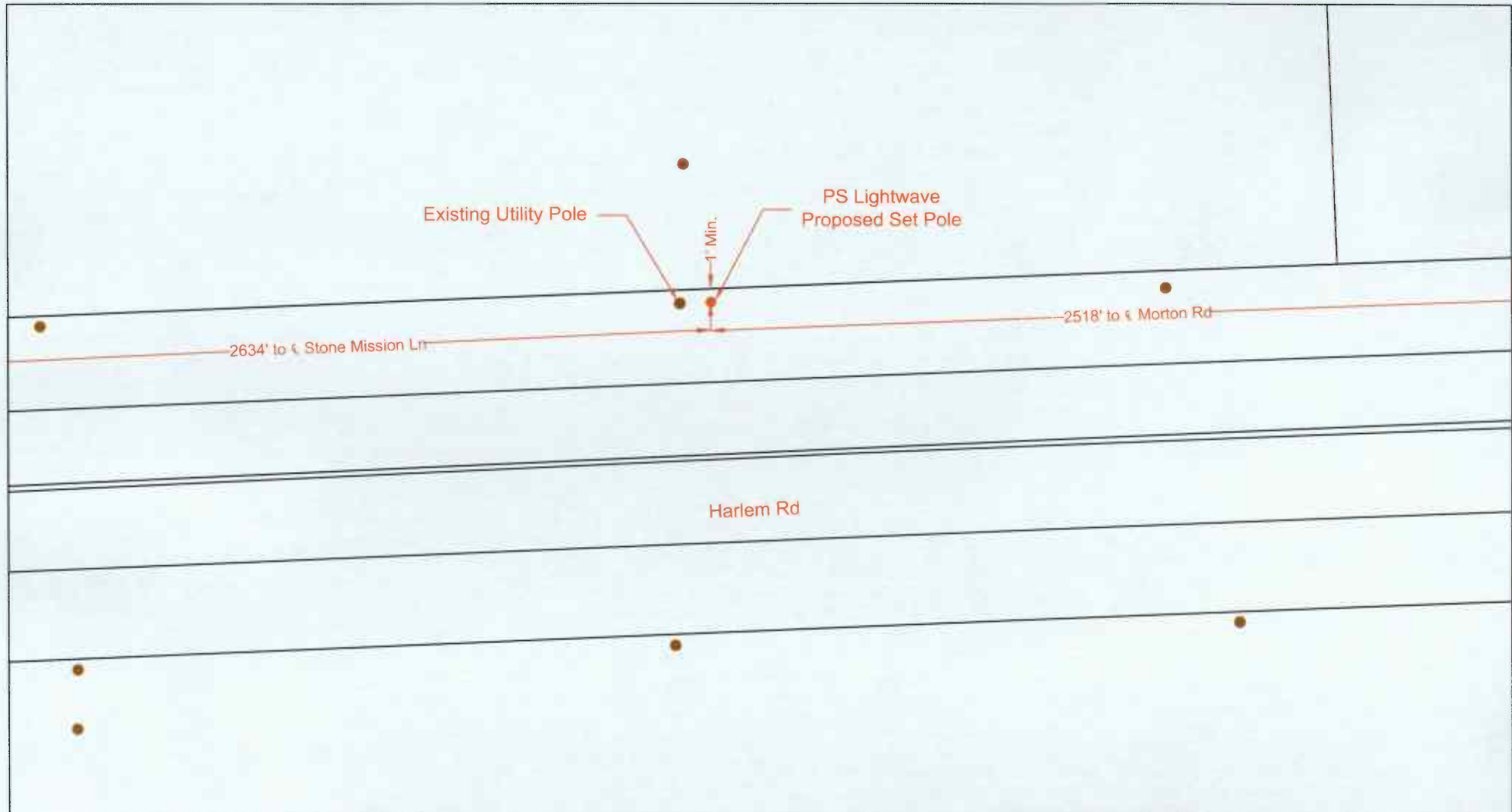
For construction or maintenance contract work, specific project requirements for shadow vehicles can be found in the project GENERAL NOTES for Item 502, Barricades, Signs and Traffic Handling.

Texas Department of Transportation
Traffic Operations Division

**TRAFFIC CONTROL PLAN
LANE CLOSURES ON MULTILANE
CONVENTIONAL ROADS**

TCP (1-4) - 12

REVISIONS	DATE			
	DATE	BY	JOB	NO.
2-94 1-12				
8-96				
1-97				
6-98				
154				



LEGEND		
UG	3(1") HDPE W/ F.O. CABLE	PROPOSED CONDUIT
UG	3(1.25") HDPE W/ F.O. CABLE	EXISTING CONDUIT
UG	1(2") HDPE W/ F.O. CABLE	EMT
UG	1(4") HDPE W/ 3(1.25")HDPE	1.25" EMT
	FLEX INNERDUCT	R/W
AIR	AERIAL FIBER OPTIC CABLE	EOP
CAT5	CAT5 CABLE	FENCE
		RACK LOCATION
		PSLW SET POLE
		EXISTING SET POLE
		EXISTING UTILITY POLE
		PROPOSED PSLW VAULT (24"x36"x24")
		EXISTING VAULT
		PULLBOX
		MDF LOCATION

PROPRIETARY INFORMATION - PROPERTY OF PS LIGHTWAVE

REVISION#1: Rev#1	DATE: Rev#1 Date
REVISION#2: Rev#2	DATE: Rev#2 Date
REVISION#3: Rev#3	DATE: Rev#3 Date
REVISION#4: Rev#4	DATE: Rev#4 Date

SCALE: 1"=40'

PAGE: 1 OF: 3

CUSTOMER ID: JOB# M0218-7854	
CUSTOMER: Notice Of Proposed Utility Installation	
ADDRESS: Harlem Rd	
CITY/ZIP: Richmond TX 77407	COUNTY: Fort Bend
TENANTS:	# OF FLOORS: DWG#: KEY MAP: 526 U
WD#: 100944	JOB#: M0218-7854
APPROVED BY: P.J.E.	DATE: 02/14/2018



LEGEND			
	UG 3(1") HDPE W/ F.O. CABLE		PROPOSED CONDUIT
	UG 3(1.25") HDPE W/ F.O. CABLE		EXISTING CONDUIT
	UG 1(2") HDPE W/ F.O. CABLE		1.25" EMT
	UG 1(4") HDPE W/ 3(1.25")HDPE		RIGHT-OF-WAY
	FLEX INNERDUCT		EDGE-OF-PAVEMENT
	AIR AERIAL FIBER OPTIC CABLE		FENCE
	CAT5 CAT5 CABLE		RACK LOCATION
	PSLW SET POLE		EXISTING SET POLE
	EXISTING UTILITY POLE		EXISTING VAULT
	PROPOSED PSLW VAULT (24"x36"x24")		PULLBOX
	MDF LOCATION		

SCALE: 1"=40'
 PAGE: 2
 OF: 3

LIGHTWAVE
 PROPRIETARY INFORMATION - PROPERTY OF PS LIGHTWAVE

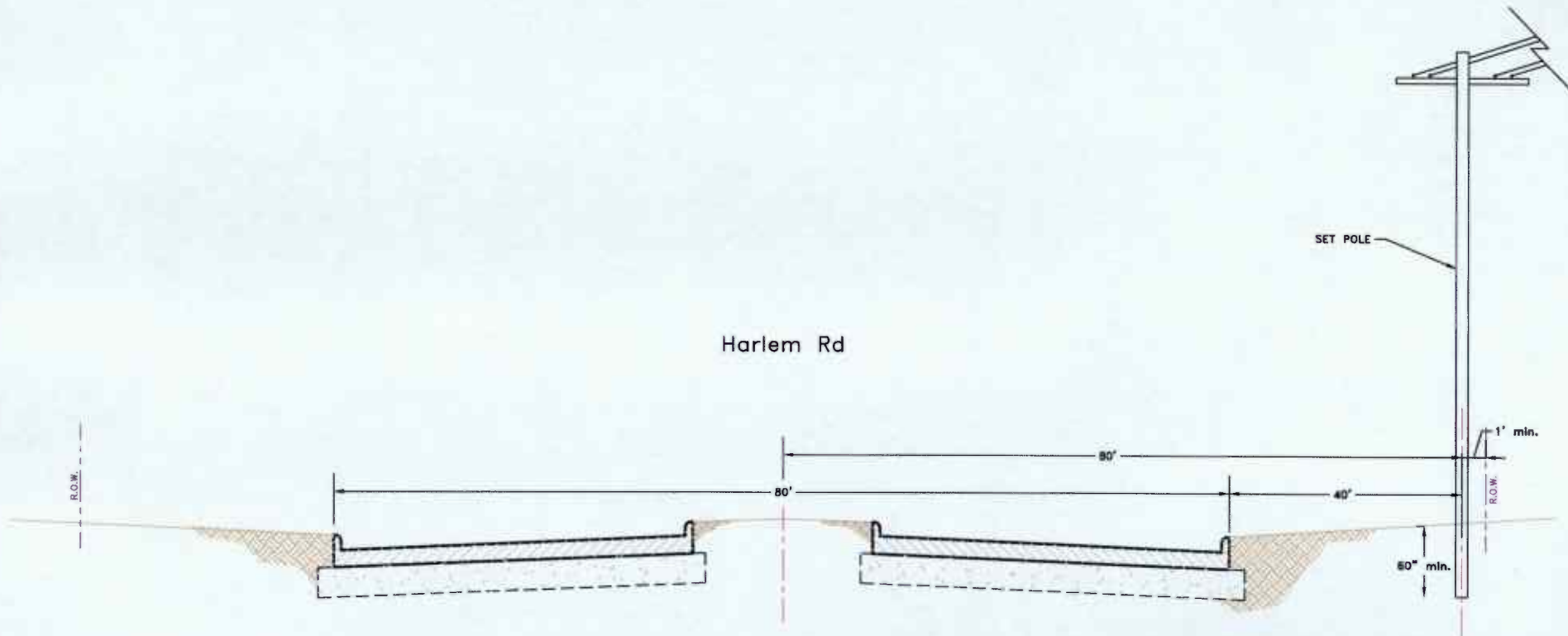
REVISION#1: Rev#1	DATE: Rev#1 Date
REVISION#2: Rev#2	DATE: Rev#2 Date
REVISION#3: Rev#3	DATE: Rev#3 Date
REVISION#4: Rev#4	DATE: Rev#4 Date

CUSTOMER ID: JOB# M0218-7854	
CUSTOMER: Notice Of Proposed Utility Installation	
ADDRESS: Harlem Rd	
CITY/ZIP: Richmond TX 77407	COUNTY: Fort Bend
TENANTS:	# OF FLOORS:
OW#:	KEY MAP: 526 U
W# 100564	JOB# M0218-7854
APPROVED BY: P.E	DATE: 02/14/2018
DATE:	DATE:

General Notes:

- 1) Surface to be restored to its original condition in compliance with Fort Bend County Standards.
- 2) Contractors shall provide and install traffic control devices in conformance with part VI of Texas manual on Uniform Traffic Control Devices (TMUTCD—Latest Edition with Revisions) during construction.
- 3) No Lanes shall be blocked 7am–9am and 4pm–6:30pm Monday thru Friday.

Harlem Rd



LEGEND		
UG 3(1") PVC W/ F.O. CABLE	PROPOSED CONDUIT	PSLW SET POLE
UG 3(1.25") PVC W/ F.O. CABLE	EXISTING CONDUIT	EXISTING SET POLE
UG 1(2") PVC W/ F.O. CABLE	EMT 1.25" EMT	EXISTING UTILITY POLE
UG 1(4") HDPE W/ 3(1.25")PVC	R/W RIGHT-OF-WAY	PROPOSED PSLW VAULT (24"x36"x24")
FLEX INNERDUCT	EOP EDGE-OF-PAVEMENT	EXISTING VAULT
AIR AERIAL FIBER OPTIC CABLE	FENCE	PULLBOX
CATS5 CATS CABLE	RACK LOCATION	MDF LOCATION

		Job# M0218-7854	
		Description: Notice Of Proposed Utility Installation	
PROPRIETARY INFORMATION - PROPERTY OF PS LIGHTWAVE		ADDRESS: Harlem Rd	
REVISION#1: Rev#1	DATE: Rev#1 Date	CITY/ZIP: Richmond, TX 77407	COUNTY: Fort Bend
REVISION#2: Rev#2	DATE: Rev#2 Date	TENANTS:	# OF FLOORS:
REVISION#3: Rev#3	DATE: Rev#3 Date	WO# 100944	JOB# M0218-7854
REVISION#4: Rev#4	DATE: Rev#4 Date	APPROVED BY:	DATE: 02/14/2018
SCALE: N.T.S.	PAGE: 3	OF: 3	KEY MAP: 526 U