



**REVIEW BY FORT BEND COUNTY
COMMISSIONERS COURT**

15H
**Fort Bend County
Engineering Department**
301 Jackson Suite 401
Richmond, Texas 77469
281.633.7500
Permits@fortbendcountytexas.gov

- Right of Way Permit
- Commercial Driveway Permit

Permit No: 2018-17999

Applicant: MCI Metro Access Transmission Services, Corp./Eagle Eye Permitting & Design, LLC

Job Location Site: 6400 Oilfield Road, Missouri City, TX 77459

Bond No. **Date of Bond:** 5/1/2017 **Amount:** \$50,000.00

The above applicant came to make use of certain Fort Bend County property subject to, "The Order Regulating the Laying, Construction, Maintenance, and Repair of Buried Cables, Conduits, and Pole Lines, In, Under, Across or Along Roads, Streets, Highways, and Drainage Ditches in Fort Bend County, Texas, Under the Jurisdiction of the Commissioners Court of Fort Bend County, Texas," as passed by the Commissioners Court of Fort Bend County, Texas, of the Minutes of the Commissioners Court of Fort Bend County, Texas, to the extent that such order is not inconsistent with Chapter 181, Vernon's Texas Statutes and Codes Annotated.

Notes:

1. Evidence of review by the Commissioners Court must be kept on the job site and failure to do so constitutes grounds for job shutdown.
2. Written notices are required:
 - a. 48 hours in advance of construction start up, and
 - b. When construction is completed and ready for final inspection, submit notification to Permit Administrator thru MyGovernmentOnline.org portal.
3. This permit expires one (1) year from date of permit if construction has not commenced.

On this 6th day of February, 2018, Upon Motion of Commissioner Meyers, seconded by Commissioner Morales, duly put and carried, it is ORDERED, ADJUDGED AND DECREED that said notice of said above purpose is hereby acknowledged by the Commissioners Court of Fort Bend County, Texas, and that said notice be placed on record according to the regulation order thereof.

Signature

Presented to Commissioners Court and approved.

By: Charles O. Ay
for County Engineer

Date Recorded 2-12-2018 Comm. Court No. 15H

By: N/A
Drainage District Engineer/Manager

Clerk of Commissioners Court
By: Arinda Willis
Deputy



**PERMIT APPLICATION REVIEW FORM FOR
CABLE, CONDUIT, AND POLE LINE ACTIVITY
IN FORT BEND COUNTY**

**Fort Bend County
Engineering Department**
301 Jackson Suite 401
Richmond, Texas 77469
281.633.7500
Permits@fortbendcountytexas.gov

- Right of Way Permit
- Commercial Driveway Permit

Permit No: 2018-17999

The following "Notice of Proposed Cable, Conduit, and/or Pole Line activity in Fort Bend County" and accompanying attachments have been reviewed and the notice conforms to appropriate regulations set by Commissioner's Court of Fort Bend County, Texas.

(1) COMPLETE APPLICATION FORM:

- a. Name of road, street, and/or drainage ditch affected.
- b. Vicinity map showing course of directions
- c. Plans and specifications

(2) BOND:

- County Attorney, approval when applicable.
- Perpetual bond currently posted. Bond No: Amount: \$50,000.00
- Performance bond submitted. Bond No: Amount:
- Cashier's Check Check No: Amount:

(3) DRAINAGE DISTRICT APPROVAL (WHEN APPLICABLE):

Drainage District Approval

Date

We have reviewed this project and agree it meets minimum requirements.

Charley O. Ay

Permit Administrator

1/26/2018

Date

MCI metro
ACCESS TRANSMISSION SERVICES CORPORATION

OUTSIDE PLANT CONSTRUCTION
FIBER OPTIC CABLE ROUTE

MCI ONE-FIBER
SIENNA VILLAGE RE-ROUTE
MISSOURI CITY, TX

SITE NFID: 1706ANAY.013

PROJECT STATUS: CONSTRUCTION



GENERAL NOTES / CLARIFICATION NOTES



GENERAL NOTES

- VERIZON BUSINESS COMPRISES THE FOLLOWING OPERATING ENTITIES:
 - MCI COMMUNICATIONS SERVICES, INC.
 - MCI METRO ACCESS TRANSMISSION SERVICES CORPORATION
 - MCI METRO ACCESS TRANSMISSION SERVICES OF VIRGINIA, INC.
 - MCI METRO ACCESS TRANSMISSION SERVICES OF MASSACHUSETTS, INC.
 - METROPOLITAN FIBER SYSTEMS OF NEW YORK, INC.
- ALL WORK TO BE PERFORMED IN STRICT ACCORDANCE WITH THE APPLICABLE CODES OR REQUIREMENTS OF ANY REGULATING GOVERNMENTAL AGENCY, VERIZON BUSINESS AND THE RIGHT-OF-WAY GRANTOR.
- LOCATIONS OF SOME OF THE PHYSICAL FEATURES WERE OBTAINED FROM DATED RAILROAD EVALUATION MAPS OR OTHER DRAWINGS AND MAY NOT BE AS SHOWN OR DEPICTED ON THESE DRAWINGS.
- UNDERGROUND UTILITIES HAVE BEEN PLOTTED FROM AVAILABLE RECORDS AND FIELD OBSERVATIONS BUT ARE NOT NECESSARILY EXACT. THEREFORE, UTILITY LOCATIONS WILL BE VERIFIED AT LEAST 100 FEET IN ADVANCE OF TRENCHING OR PLOWING, SO THAT CHANGES IN CABLE PLACEMENT CAN BE MADE IN THE EVENT OF CONFLICT.
- ALL KNOWN BURIED OBSTRUCTIONS ARE SHOWN ON THE CONSTRUCTION DRAWINGS. ANY AND ALL OTHERS ENCOUNTERED ARE ALSO THE RESPONSIBILITY OF THE CONTRACTOR TO LOCATE, PROTECT AND REPAIR IF DAMAGED.
- ANY AND ALL IMPROVEMENTS, SUCH AS ASPHALT OR CONCRETE PAVEMENT, CURBS, GUTTERS, WALKS, DRAINAGE DITCHES, EMBANKMENTS, SHRUBS, TREES, GRASS SOD, ETC., IF DAMAGED, SHALL BE RESTORED TO ORIGINAL CONDITION.
- EQUIPMENT TYPES SPECIFIED HEREIN (IE: "BACKHOE", SWAMP PLOW" ETC.) ARE SUGGESTIONS ONLY AND ARE NOT INTENDED AS REQUIREMENTS. CONTRACTOR WILL BE NOTIFIED AS TO EXPECTATIONS.
- SHORING OF BORE PITS AND TRENCHES IN ACCORDANCE WITH OSHA REGULATIONS IS MANDATORY.
- BURIED CABLE MARKERS WILL BE PLACED AT ALL UNDERGROUND UTILITY LOCATIONS AND ALL OTHER LOCATIONS IN ACCORDANCE WITH THE CONSTRUCTION DRAWINGS AND THE OUTSIDE PLANT HANDBOOK.
- ALL 4" ID CONDUIT WILL BE SCHEDULE 40 (EG.: PVC OR GSP/BSP), OR AS SPECIFIED.
- UNDERGROUND CONDUIT WILL BE PLACED AT 48" MINIMUM COVER UNLESS OTHERWISE SPECIFIED ON THE CONSTRUCTION DRAWINGS.

CLARIFICATION NOTES

| | |
|----|---|
| 1. | STATION |
| 2. | LOCATION |
| 3. | CLARIFICATION NO. AND MINIMUM COVER |
| 4. | QUANTITY LINEAR FOOTAGE/SQUARE FOOTAGE, SIZE OF MANHOLE/HANDHOLE SIZE OF PULL/SPLICE BOX, DIMENSION OF WALL, HEIGHT/CLASS/TYPER OF POLE |
| 5. | TYPICAL DRAWING NO. AND TYPICAL DETAIL DRAWING NUMBER |
| 6. | PLANT ACCOUNTING CODE |
| 7. | SPECIFIED CONDUIT, HANDHOLE/MANHOLE NO., SPECIFIED PURPOSE AND MATERIAL, BRIDGE NO. AND RAILROAD STATION, MATERIAL, POLE NO. |

ADDENDUM NOTES: HARRIS COUNTY - 48 HOUR NOTICE

- CONTRACTOR SHALL NOTIFY HARRIS COUNTY (48 HOURS) PRIOR TO COMMENCING CONSTRUCTION AND/OR BACKFILLING ANY UTILITIES.
- CONTRACTOR(S) ARE TO CONTACT HARRIS COUNTY "PUBLIC REVIEW DEPARTMENT" BY PHONE OR EMAIL.
 - 713-274-3931
 - public.review@chpid.org

CLARIFICATION NOTES (CONTINUED)

| | | |
|-----|-----|---|
| 100 | 110 | JACK AND DRY BORE CONDUIT(S) |
| 200 | 210 | PLACE CONDUIT |
| | 212 | PLACE HIGH DENSITY POLYETHYLENE (HDPE) |
| | 213 | ROCK ADDER |
| | 214 | SLURRY BACKFILL ADDER |
| | 215 | EXPOSE CONDUIT |
| | 216 | EXPOSE CONDUIT AND RELOCATE |
| | 217 | EXPOSE CONDUIT AND REPLACE/SUBSTITUTE |
| | 218 | EXPOSE AND REMOVE CONDUIT |
| | 219 | EXPOSE AND REMOVE CONDUIT (ABANDONED) |
| | 220 | CONCRETE ENCASE |
| | 221 | REMOVE CONCRETE ENCASUREMENT |
| | 222 | REMOVE CONCRETE CAP |
| | 240 | PLACE HANDHOLE |
| | 244 | REMOVE EXISTING HANDHOLE |
| | 245 | RELOCATE HANHOLE |
| | 246 | REPLACE/SUBSTITUTE HANDHOLE |
| | 247 | EXCAVATE SPLICE PIT |
| | 250 | PLACE MANHOLE |
| | 252 | REMOVE EXISTING MANHOLE |
| | 255 | RELOCATE PRECAST MANHOLE |
| | 256 | REPLACE/SUBSTITUTE PRECAST MANHOLE |
| | 180 | CONSTRUCT WALL |
| | 270 | REMOVE AND RESTORE ASPHALT |
| | 280 | REMOVE AND RESTORE CONCRETE |
| | 281 | REMOVE AND RESTORE SIDEWALK |
| | 282 | REMOVE AND RESTORE CURBING |
| 300 | 310 | ATTACH CONDUIT TO WALL OR STRUCTURE |
| | 315 | DETACH CONDUIT FROM WALL OR STRUCTURE |
| | 320 | CORE BORE |
| | 330 | ATTACH PULL/SPLICE BOX TO WALL OR STRUCTURE |
| 400 | 410 | PULL CABLE |
| | 411 | PULL THROUGH DUCT (INNERDUCT) |
| | 415 | REMOVE CABLE FROM CONDUIT |
| | 420 | REPOSITION ACTIVE CABLE SLACK |
| 500 | 510 | DIRECT BURY CABLE |
| | 515 | EXPOSE DIRECT BURIED CABLE |
| | 516 | EXPOSE DIRECT BURIED CABLE AND RELOCATE |
| | 517 | REMOVE AND DISPOSE OF CABLE |
| | 520 | PLACE AERIAL CABLE |
| | 525 | RELOCATE AERIAL CABLE |
| | 518 | DELASH AERIAL CABLE |
| | 527 | RELASH AERIAL CABLE |
| | 528 | REMOVE AERIAL CABLE |
| | 530 | PLACE POLE/PUSH BRACE |
| | 535 | REMOVE POLE/PUSH BRACE |
| 600 | 610 | JETTING CONDUIT |
| | 620 | EMBEDMENT PLOW |
| | 630 | DIRECTIONAL BORE |
| 700 | 710 | PLACE BURIED CABLE MARKERS AND SIGNS/MWCOM WATER CROSSING SIGNS |
| | 711 | PLACE ISOLATOR/PROTECTION SYSTEM AT EXISTING HANDHOLES/MANHOLES |
| | 713 | REMOVE BURIED CABLE MARKER POST/HARDWARE |
| | 712 | REMOVE BURIED CABLE MARKER POST/HARDWARE |
| | 714 | REMOVE CONCRETE BURIED CABLE MARKER POST |

PROJECT: _____

MISSOURI CITY, TX

SIENNA VILLAGE RE-ROUTE

NFD: 1706ANAY.013

MCI metro
 ACCESS TRANSMISSION SERVICES
 CORPORATION
 OUTSIDE PLANT CONSTRUCTION
 TITLE: FIBER OPTIC ROUTE
 SIENNA VILLAGE RE-ROUTE
 MISSOURI CITY, TX

DATE: 01/7/2018

ENGINEER: EAGLE EYE

DRAWN BY: ROBERT SANTOS

REVISIONS

| No. | DATE | DESCRIPTION | BY |
|-----|------|-------------|----|
| | | | |
| | | | |
| | | | |
| | | | |
| | | | |
| | | | |
| | | | |
| | | | |
| | | | |
| | | | |

EXCEPT AS MAY BE OTHERWISE PROVIDED BY CONTRACT, THESE DRAWINGS AND SPECIFICATIONS SHALL REMAIN THE PROPERTY OF MCI COMMUNICATIONS SERVICES INC. BOTH BEING ISSUED IN STRICT CONFIDENCE AND SHALL NOT BE REPRODUCED, COPIED, OR USED FOR ANY PURPOSE WITHOUT SPECIFIC WRITTEN PERMISSION.

SCALE

HORIZONTAL: 1"= N/A

VERTICAL: 1"= N/A

MP _____ TO MP _____

SHEET 04 OF 19

FILE: SIENNA VILLAGE.DWG

SYMBOLS KEY

| | EXISTING | PROPOSED |
|---|----------|----------|
| DIRECT BURIED CABLE | | |
| AERIAL CABLE | | |
| SUBMARINE CABLE | | |
| FOGWIRE CABLE | | |
| DIRECT BURIED HDPE | | |
| PVC OR SPLIT PVC CONDUIT | | |
| BSP/GSP OR SPLIT BSP/GSP CONDUIT | | |
| STEEL CASING | | |
| REMOVE AND RESTORE ASPHALT OR CONCRETE (WIDTH AS INDICATED) | | |
| CORE BORE | | |
| JACK AND BORE | | |
| DIRECTIONAL BORE (& PLACE CONDUIT) | | |
| FUTURE CABLE | | |
| REMOVE CABLE | | |
| TO BE REMOVED OR ABANDONED (SHOWN FOR HDPE) | | |
| AERIAL UTILITY (ELECTRIC) | | |
| UNDERGROUND UTILITY (TELEPHONE) | | |
| MAIN TRACKS | | |
| AUXILLARY TRACKS | | |
| CENTERLINE | | |
| RIGHT-OF-WAY | | |
| EDGE OF ROADWAY (GENERIC) | | |
| EDGE OF PAVEMENT | | |
| BACK OF CURB | | |
| DITCH LINE | | |
| TAX, CITY, COUNTY, OR STATE BOUNDARY LINE | | |
| PROPERTY LINE | | |
| FENCE LINE | | |
| GUARDRAIL | | |
| TOP OF SLOPE | | |
| TOE OF SLOPE | | |

STEEL MARKER AND SIGN-(A)
ALUMINUM "HUB"-STYLE MARKER-(B)
FLAT MARKER-(C)
TUBULAR MARKER-(D)
TUBULAR MARKER, & ISOLATOR PROTECTOR-(E)

MILE POST MARKER
NOTE:
DASHED = NOT FOUND IN FIELD

PERMIT TRACKING FORM IDENTIFIER

ROCK PROBE (DEPTH AS INDICATED)

UTILITY COVER DEPTH

HANDHOLE, MANHOLE OR PULLBOX

POLE

ANCHOR ONLY

GUY ONLY

OVERHEAD GUY (ARROW IN DIRECTION OF PULL)

ANCHOR AND GUY

SIDEWALK ANCHOR AND GUY

FOREIGN ANCHOR AND GUY

PUSH BRACE (EXISTING POLE)

ACCOUNT CODE CHANGE (BURIED TO AERIAL)

RISER ATTACHMENT LOCATION

BOND AND GROUND

CULVERT (SIZE AS INDICATED)

BRIDGE

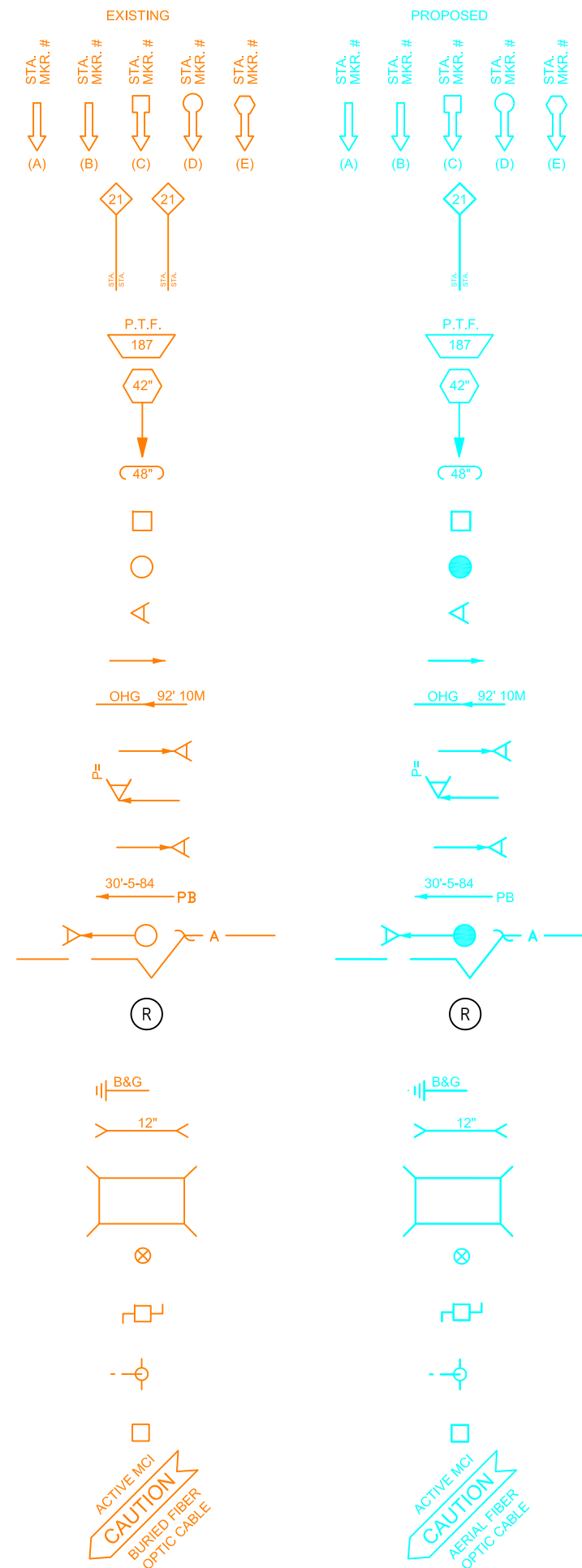
WATER METER

GAS VALVE

FIRE HYDRANT

RAILROAD SIGNAL CONTROL BOX

CAUTION NOTE



PROJECT: _____

MISSOURI CITY, TX

SIENNA VILLAGE RE-ROUTE

NFD: 1706ANAY.013

MCImetro
ACCESS TRANSMISSION SERVICES
CORPORATION

OUTSIDE PLANT CONSTRUCTION

TITLE: FIBER OPTIC ROUTE
SIENNA VILLAGE RE-ROUTE
MISSOURI CITY, TX

DATE: 01/7/2018

ENGINEER: EAGLE EYE

DRAWN BY: ROBERT SANTOS

REVISIONS

| No. | DATE | DESCRIPTION | BY |
|-----|------|-------------|----|
| | | | |
| | | | |
| | | | |
| | | | |

EXCEPT AS MAY BE OTHERWISE PROVIDED BY CONTRACT, THESE DRAWINGS AND SPECIFICATIONS SHALL REMAIN THE PROPERTY OF MCI COMMUNICATIONS SERVICES INC. BOTH BEING ISSUED IN STRICT CONFIDENCE AND SHALL NOT BE REPRODUCED, COPIED, OR USED FOR ANY PURPOSE WITHOUT SPECIFIC WRITTEN PERMISSION.

SCALE

HORIZONTAL: 1"= N/A

VERTICAL: 1"= N/A

MP _____ TO MP _____

SHEET 05 OF 19

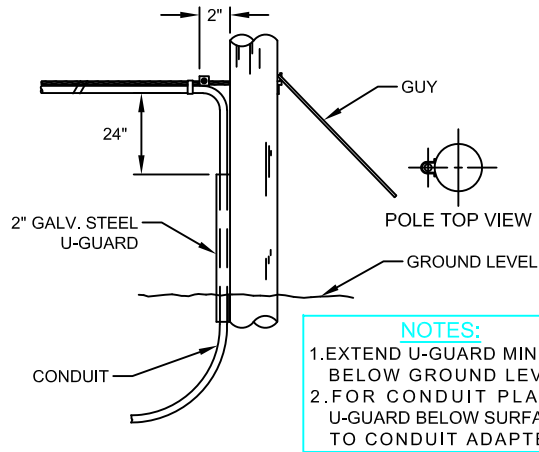
FILE: ECC-SIENNA VILLAGE

GENERAL AERIAL CONSTRUCTION DETAILS



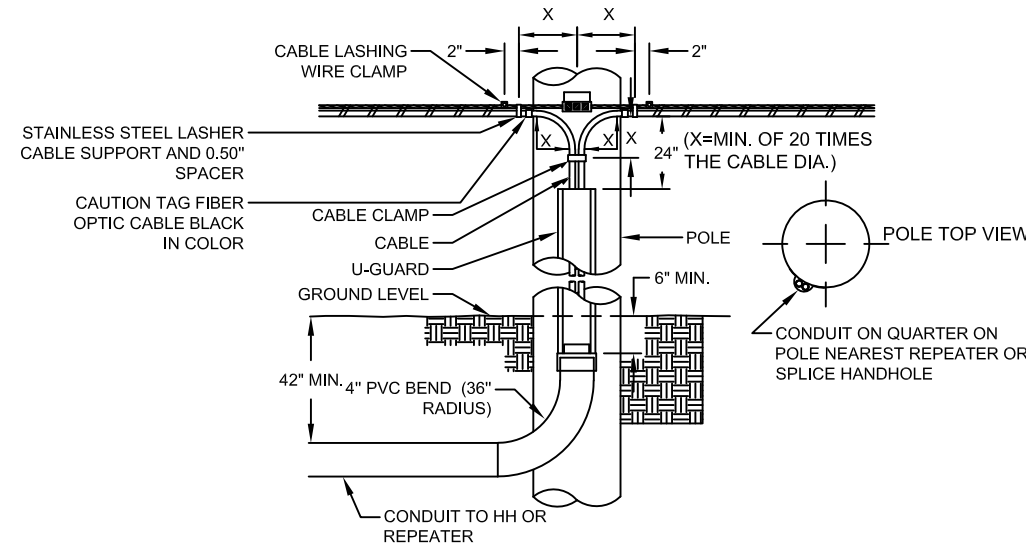
TYPICAL DETAIL "A"

POLE ARRANGEMENT FOR AERIAL TO BURIED



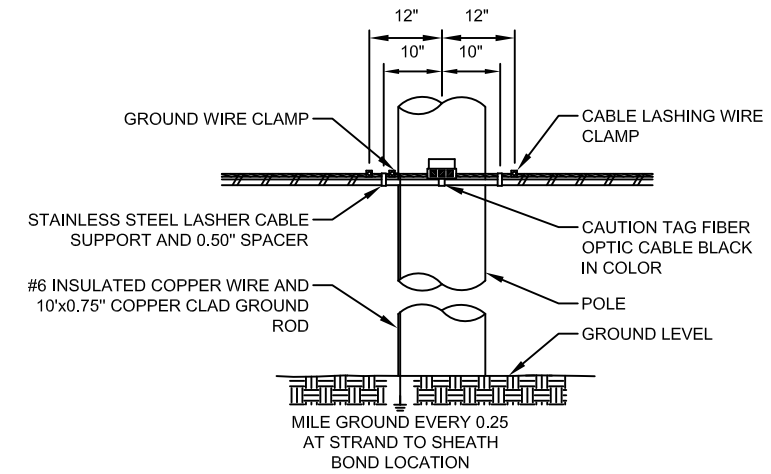
TYPICAL DETAIL "B"

POLE ARRANGEMENT FOR REPEATER OR HANDHOLE LOCATION



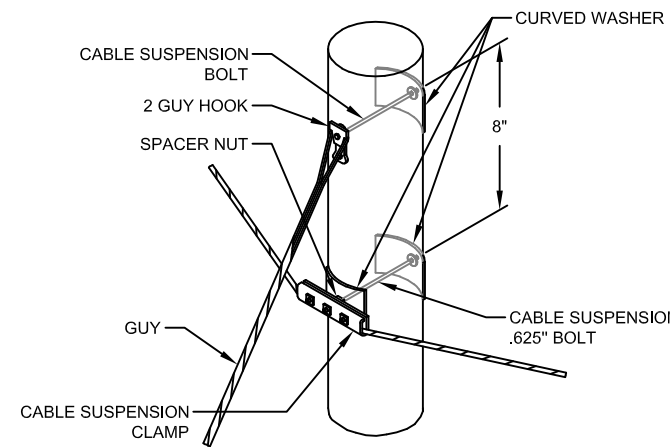
TYPICAL DETAIL "C"

TYPICAL CABLE & HARDWARE INSTALLATION



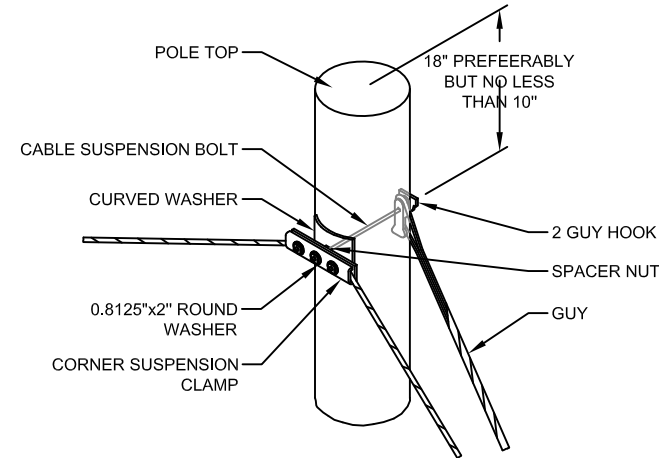
TYPICAL DETAIL "D"

SUSPENSION STRAND - PULL TOWARD POLE - LESS THAN 5 FEET



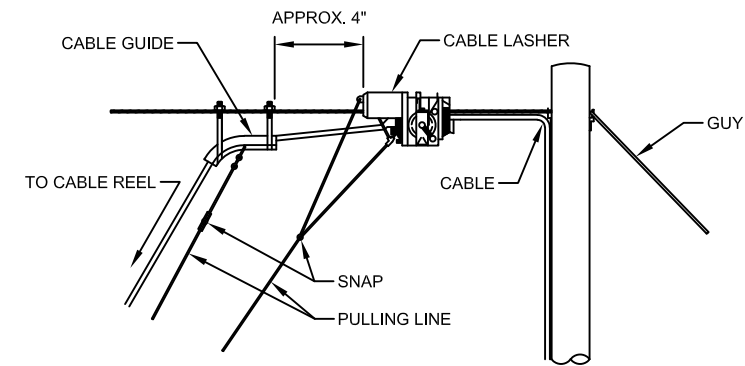
TYPICAL DETAIL "E"

SUSPENSION STRAND - PULL AWAY FROM POLE - 5 FEET OR MORE



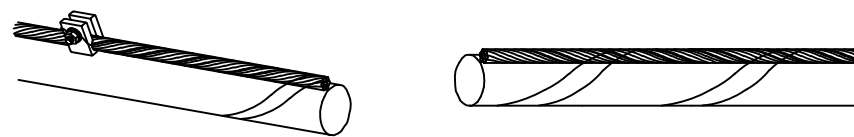
TYPICAL DETAIL "F"

TYPICAL ARRANGEMENT OF CABLE LASHER AND CABLE GUIDE



TYPICAL DETAIL "G"

JOINING 045 LASHING WIRE



FORMING WIRE OVER STUD OF CLAMP

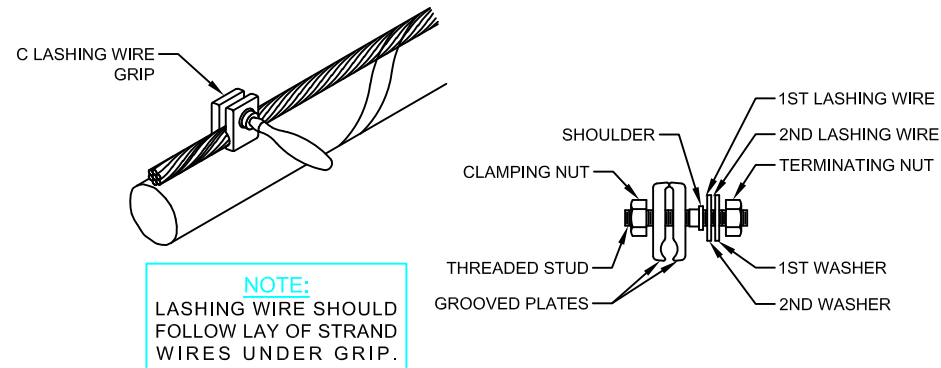
REMOVE ANY SLACK IN THE LASHING WIRE BY MAINTAINING A PULL ON THE WIRE AND TAPPING THE STRAND SHARPLY. THEN FORM THE WIRE OVER THE STUD AND TIGHTEN THE NUT. CUT THE FREE END OF THE LASHING WIRE OFF 0.75" BEYOND THE END OF THE CLAMP.

FORMING LASHING WIRE AROUND STRAND

FORM THE LASHING WIRE AROUND THE STRAND AND PLACE IT BELOW THE STUD AND BETWEEN THE SECOND WASHER AND STUD SHOULDER.

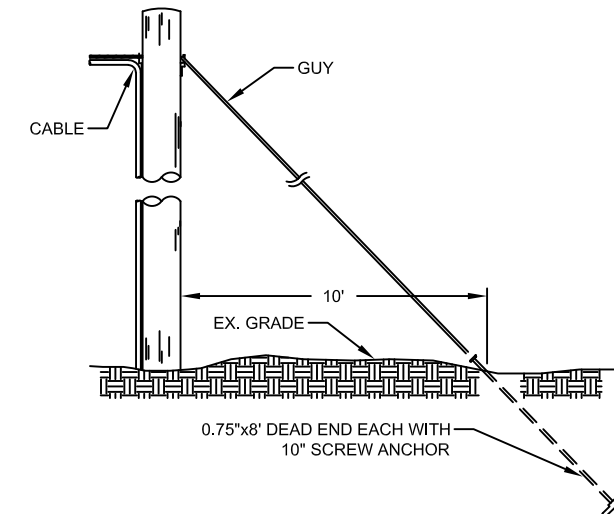
TYPICAL DETAIL "H"

LASHING WIRE GRIP AND CLAMP



TYPICAL DETAIL "I"

ANCHOR & DOWN GUY



PROJECT: _____

MISSOURI CITY, TX

SIENNA VILLAGE RE-ROUTE

NFD: 1706ANAY.013

MCImetro
ACCESS TRANSMISSION SERVICES
CORPORATION

OUTSIDE PLANT CONSTRUCTION

TITLE: FIBER OPTIC ROUTE
SIENNA VILLAGE RE-ROUTE
MISSOURI CITY, TX

DATE: 01/7/2018

ENGINEER: EAGLE EYE

DRAWN BY: ROBERT SANTOS

REVISIONS

| No. | DATE | DESCRIPTION | BY |
|-----|------|-------------|----|
| | | | |
| | | | |
| | | | |
| | | | |
| | | | |

EXCEPT AS MAY BE OTHERWISE PROVIDED BY CONTRACT, THESE DRAWINGS AND SPECIFICATIONS SHALL REMAIN THE PROPERTY OF MCI COMMUNICATIONS SERVICES INC. BOTH BEING ISSUED IN STRICT CONFIDENCE AND SHALL NOT BE REPRODUCED, COPIED, OR USED FOR ANY PURPOSE WITHOUT SPECIFIC WRITTEN PERMISSION.

SCALE

HORIZONTAL: 1"= N/A

VERTICAL: 1"= N/A

MP _____ TO MP _____

SHEET 6A OF 19

FILE: ECC-SIENNA VILLAGE

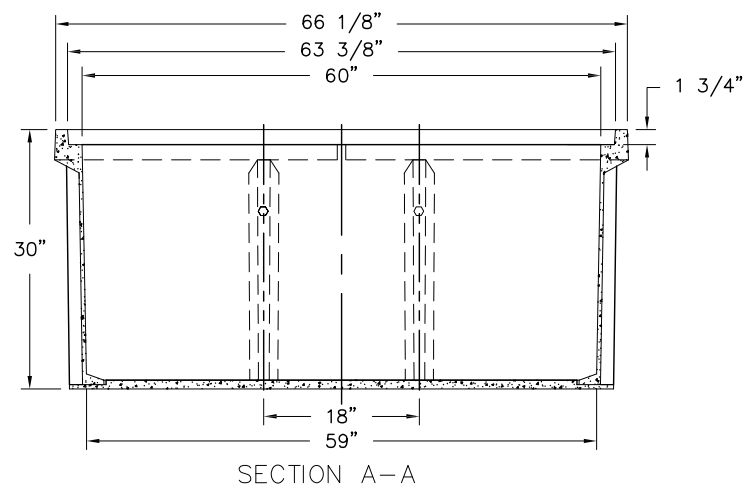
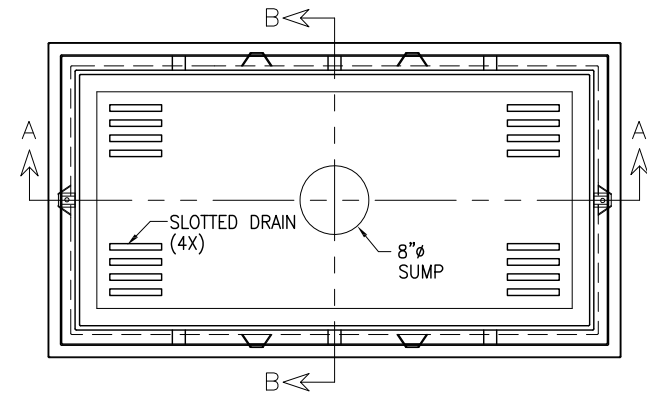
30" x 60" x 30" 30K STANDARD HANDHOLE DETAILS



PROJECT:
 MISSOURI CITY, TX
 SIENNA VILLAGE RE-ROUTE
 NFD: 1706ANAY.013

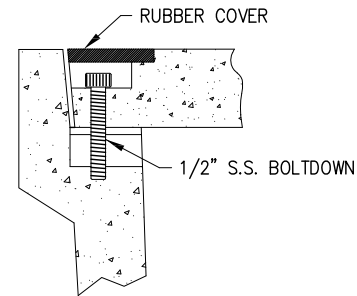
DETAIL "A"

LOCKING DEVICE
 CROSS SECTION

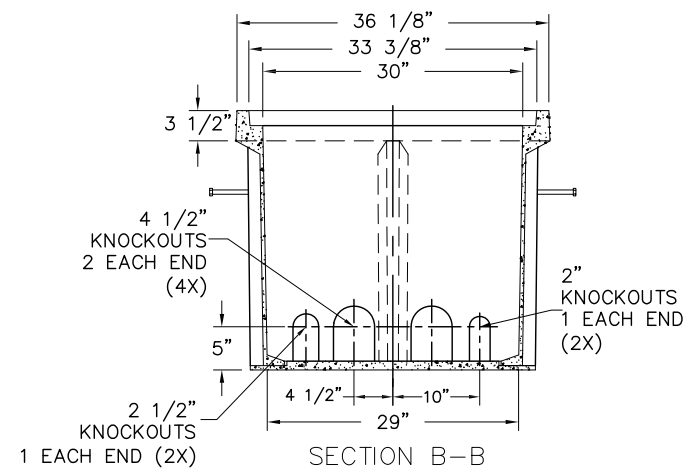


DETAIL "B"

FLUSH MOUNT
 COVER DETAIL

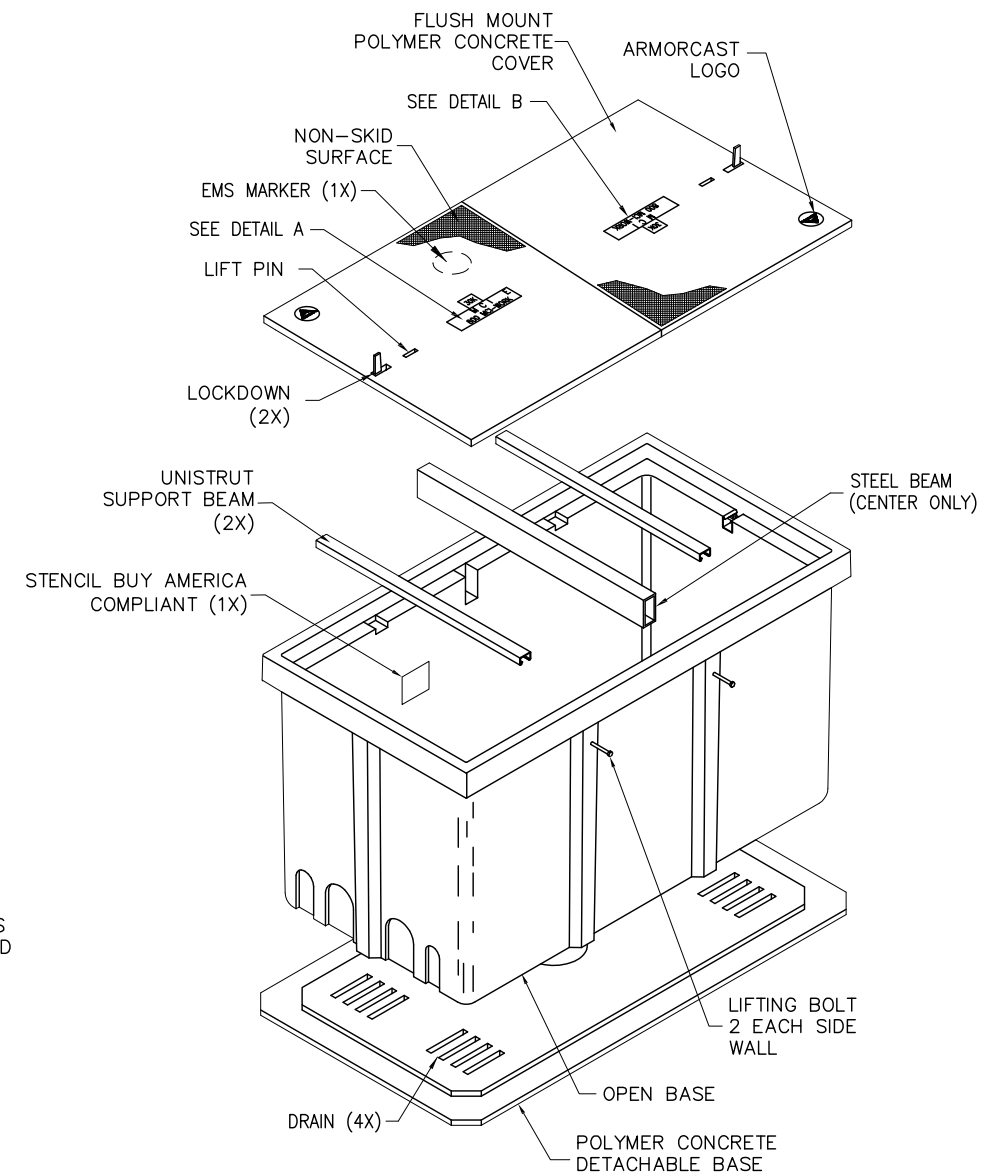


FLUSH MOUNT COVER DETAIL



DETAIL "C"

EXPLODED ISOMETRIC DETAIL



30K
 M C I E
 800 MCI-WORK
 DETAIL A

30K
 M C I
 800 MCI-WORK
 DETAIL B

SEALED PLASTIC BAG PLACED INSIDE VAULT TO CONTAIN

| ITEM | QTY | DESCRIPTION |
|------|-----|--|
| 1 | (1) | JOHNNY LOCK KEY |
| 2 | (2) | S.S. JOHNNY BOLTS W/FLAT WASHER. |
| 3 | | SHRINK WRAP COVERS TO FRAME FOR PACKAGING. |

30K STANDARD HANDHOLE
30"x60"x30" POLYMER CONCRETE FLUSH MOUNT ASSEMBLY
MEETS SCTE/ANSI 77-TIER 22 LOADING CRITERIA
ADDITIONAL REQUIREMENTS:
DESIGNED LOAD: 30,000 LBS
MINIMUM FAILURE LOAD: 45,000 LBS

MCImetro
 ACCESS TRANSMISSION SERVICES
 CORPORATION
 OUTSIDE PLANT CONSTRUCTION
 TITLE: FIBER OPTIC ROUTE
 SIENNA VILLAGE RE-ROUTE
 MISSOURI CITY, TX

DATE: 01/7/2018
 ENGINEER: EAGLE EYE
 DRAWN BY: ROBERT SANTOS

REVISIONS

| No. | DATE | DESCRIPTION | BY |
|-----|------|-------------|----|
| | | | |
| | | | |
| | | | |
| | | | |
| | | | |

EXCEPT AS MAY BE OTHERWISE PROVIDED BY CONTRACT, THESE DRAWINGS AND SPECIFICATIONS SHALL REMAIN THE PROPERTY OF MCI COMMUNICATIONS SERVICES INC. BOTH BEING ISSUED IN STRICT CONFIDENCE AND SHALL NOT BE REPRODUCED, COPIED, OR USED FOR ANY PURPOSE WITHOUT SPECIFIC WRITTEN PERMISSION.

SCALE
HORIZONTAL: 1"= N/A
VERTICAL: 1"= N/A
 MP _____ TO MP _____
SHEET 07 **OF** 19
FILE: ECC-SIENNA VILLAGE

TRAFFIC CONTROL PLAN DETAILS



PROJECT:
MISSOURI CITY, TX
SIENNA VILLAGE RE-ROUTE
NFID: 1706ANAY.013

TRAFFIC CONTROL PLAN SECTION SHALL BE COMPLETED BY ENGINEER

| ROADWAY | POSTED SPEED | TAPER LENGTH | SPACING CHANNELIZING DEVICES | | SIGN SPACING | BUFFER SPACE |
|---|--------------|--------------|------------------------------|---------|--------------|--------------|
| | | | TAPER | TANGENT | | |
| WEST LAKE HOUSTON PKWY.; WILL CLAYTON PKWY. TO UPRR | 45 MPH | 540' | 45' | 90' | 320' | 195' |
| | | | | | | |
| | | | | | | |
| | | | | | | |

LEGEND

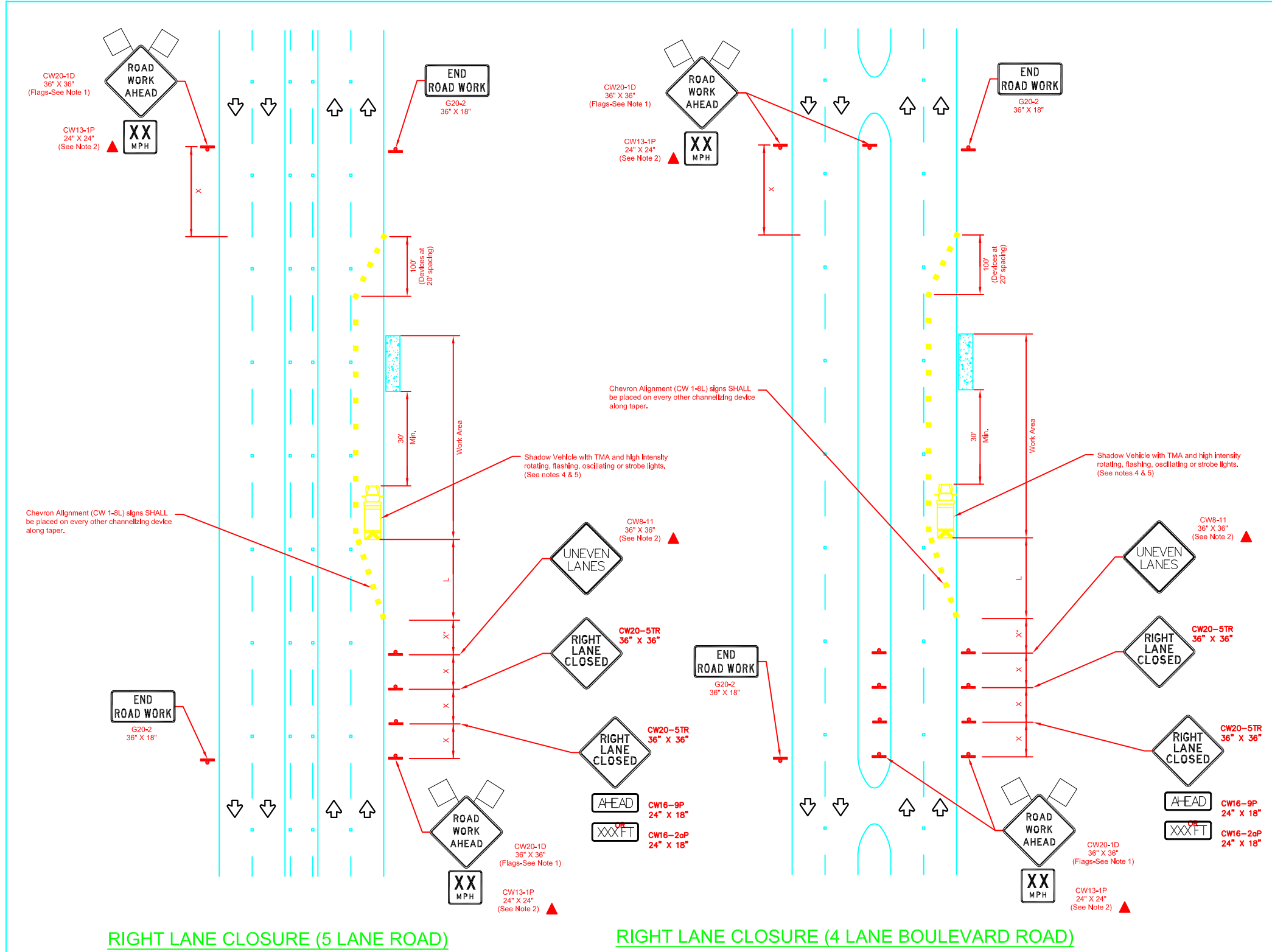
| | | | |
|--|--------------------------------------|--|---|
| | Type 3 Barricade | | Channelizing Devices |
| | Heavy Work Vehicle | | Truck Mounted Attenuator (TMA) |
| | Trailer Mounted Flashing Arrow Board | | Portable Changeable Message Sign (PCMS) |
| | Sign | | Traffic Flow |
| | Flag | | Flagger |

| Posted Speed * | Formula | Minimum Desirable Taper Lengths "L" | | | Suggested Maximum Spacing of Channelizing Devices | | Minimum Sign Spacing "x" Distance | Suggested Longitudinal Buffer Space "B" |
|----------------|-------------------------|-------------------------------------|------------|------------|---|--------------|-----------------------------------|---|
| | | 10' Offset | 11' Offset | 12' Offset | On a Taper | On a Tangent | | |
| 30 | L= WS ² / 60 | 150' | 165' | 180' | 30' | 60' | 120' | 90' |
| 35 | | 205' | 225' | 245' | 35' | 70' | 160' | 120' |
| 40 | L=WS | 265' | 295' | 320' | 40' | 80' | 240' | 155' |
| 45 | | 450' | 495' | 540' | 45' | 90' | 320' | 195' |
| 50 | L=WS | 500' | 550' | 600' | 50' | 100' | 400' | 240' |
| 55 | | 550' | 605' | 660' | 55' | 110' | 500' | 295' |
| 60 | L=WS | 600' | 660' | 720' | 60' | 120' | 600' | 350' |
| 65 | | 650' | 715' | 780' | 65' | 130' | 700' | 410' |
| 70 | L=WS | 700' | 770' | 840' | 70' | 140' | 800' | 475' |
| 75 | | 750' | 825' | 900' | 75' | 150' | 900' | 540' |

* Conventional Roads Only
* Taper lengths have been rounded off.
** L=Length of Taper(FT) W=Width of Offset(FT) S=Posted Speed(MPH)

GENERAL NOTES

- Flags attached to signs where shown are OPTIONAL.
- All traffic control devices illustrated are REQUIRED, except those denoted with the triangle symbol are OPTIONAL.
- Inactive work vehicles or other equipment should be parked near the right-of-way line and not parked on the paved shoulder.
- A Shadow Vehicle with a TMA should be used anytime it can be positioned 30 to 100 feet in advance of the area of crew exposure without adversely affecting the performance or quality of the work. If workers are no longer present but road or work conditions require the traffic control to remain in place, Type 3 Barricades or other channelizing devices may be substituted for the Shadow Vehicle and TMA.
- Additional Shadow Vehicles with TMAs may be positioned off the paved surface, next to those shown in order to protect wider work spaces.
- Contractor shall provide and install traffic control devices in conformance with part VI of Texas Manual on Uniform Traffic Control Devices (TMUTCD - Latest edition with revisions) during construction.
- No lanes shall be blocked from 7am to 9am and 4pm to 6:30pm Monday thru Friday.
- Off duty police officers/flaggers are required to direct traffic when applicable.
- If project is within 400 feet from a signalized intersection, the Contractor shall contact Harris County Engineering Department, Traffic Signal Maintenance at (713) 881-3210 five (5) days prior to the start of construction.



RIGHT LANE CLOSURE (5 LANE ROAD)

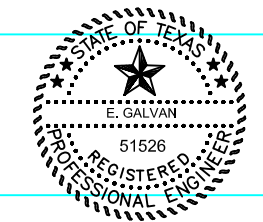
RIGHT LANE CLOSURE (4 LANE BOULEVARD ROAD)

| NO. | REVISIONS | DATE | NAME |
|-----|---|---------|------|
| 1 | UPDATED DEPARTMENT NAME & GENERAL NOTES | 4/16/15 | BSH |
| | | | |
| | | | |
| | | | |

HARRIS COUNTY
ENGINEERING DEPARTMENT



TEO, LLC
5510 Community DRIVE
Houston, Texas
77005
281-536-5123 OFFICE
713-668-6334 FAX
teolc@gmail.com
FIRM# F-8978



PROJECT TITLE: VZW-5G-JARVIS
DRAWN BY: VERIZON-BUSINESS
CK'D BY: SHEET DESCRIPTION: TRAFFIC CONTROL PLAN (RIGHT LANE CLOSURE)
SCALE: 1"= 41'
DATE: T.S. APPROVED BY: 4/05/17
SHEET NO: 8A / 15
HCED STANDARD:

DATE: 01/7/2018

ENGINEER: EAGLE EYE

DRAWN BY: ROBERT SANTOS

REVISIONS

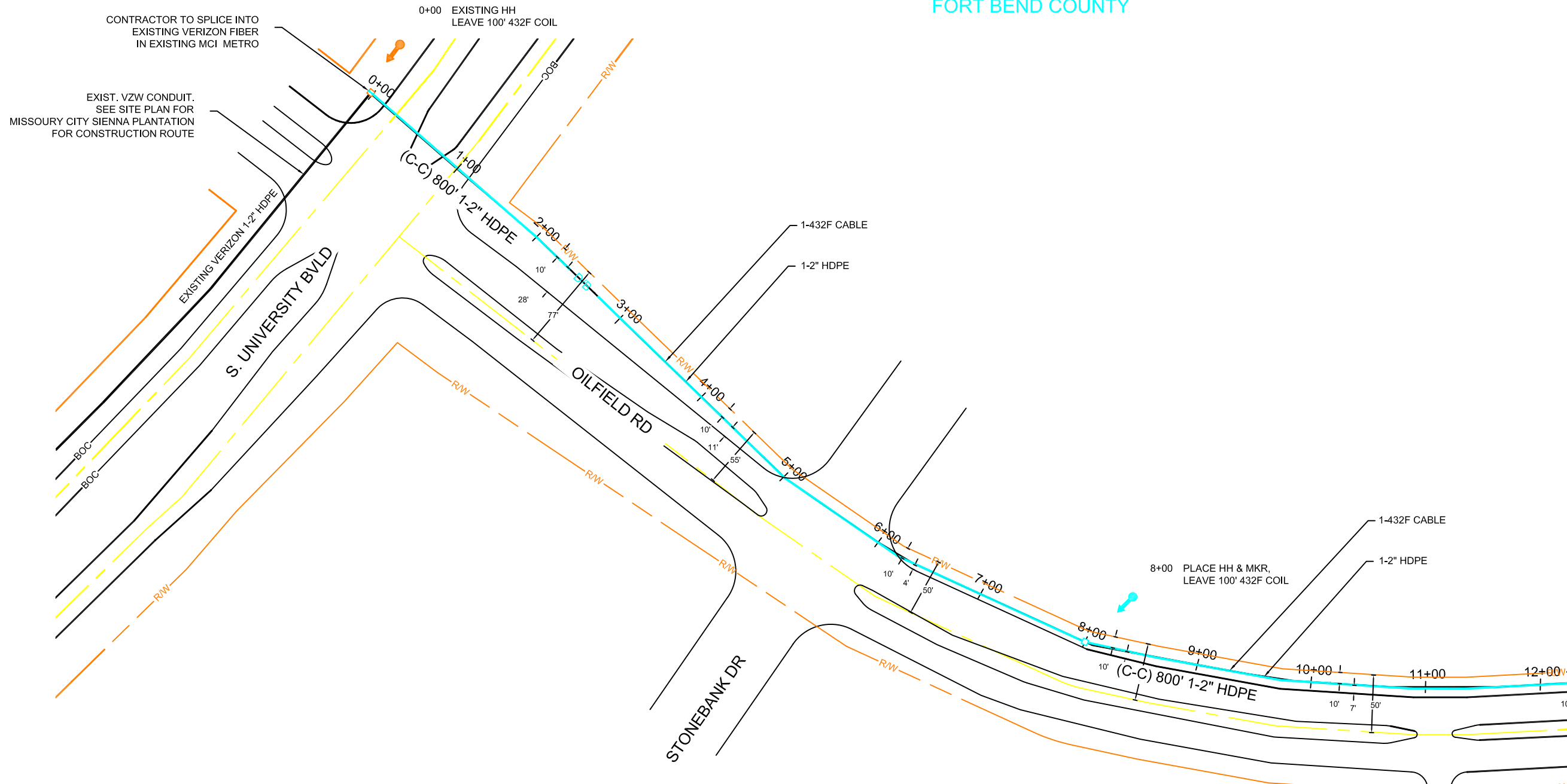
| No. | DATE | DESCRIPTION | BY |
|-----|------|-------------|----|
| | | | |
| | | | |
| | | | |

EXCEPT AS MAY BE OTHERWISE PROVIDED BY CONTRACT, THESE DRAWINGS AND SPECIFICATIONS SHALL REMAIN THE PROPERTY OF MCI COMMUNICATIONS SERVICES INC. BOTH BEING ISSUED IN STRICT CONFIDENCE AND SHALL NOT BE REPRODUCED, COPIED, OR USED FOR ANY PURPOSE WITHOUT SPECIFIC WRITTEN PERMISSION.

SCALE
HORIZONTAL: 1"= N/A
VERTICAL: 1"= N/A
MP TO MP
SHEET 08 **OF** 19
FILE: SIENNA VILLAGE.DWG

MCImetro
ACCESS TRANSMISSION SERVICES CORPORATION
OUTSIDE PLANT CONSTRUCTION
TITLE: FIBER OPTIC ROUTE
SIENNA VILLAGE RE-ROUTE
MISSOURI CITY, TX

MISSOURI CITY, TX
FORT BEND COUNTY



PROJECT:

MISSOURI CITY, TX
MISSOURI CITY/SIENNA VILLAGE LATERAL
NFID: 1706ANAY.013

| CLARIFICATION NO. | |
|-------------------|------|
| PLACE HANDHOLE | 1 |
| PULL 1-432F CABLE | 1427 |
| PROP. 1-2" HDPE | 1227 |
| PLACE MARKER | 1 |

MCImetro
ACCESS TRANSMISSION SERVICES CORPORATION
OUTSIDE PLANT CONSTRUCTION
TITLE: FIBER OPTIC ROUTE
SIENNA VILLAGE RE-ROUTE
MISSOURI CITY, TX

DATE: 01/7/2018
ENGINEER: EAGLE EYE
DRAWN BY: ROBERT SANTOS

REVISIONS

| No. | DATE | DESCRIPTION |
|-----|------|-------------|
| | | |
| | | |
| | | |
| | | |
| | | |

EXCEPT AS MAY BE OTHERWISE PROVIDED BY CONTRACT, THESE DRAWINGS AND SPECIFICATIONS SHALL REMAIN THE PROPERTY OF MCI COMMUNICATIONS SERVICES INC. BOTH BEING ISSUED IN STRICT CONFIDENCE AND SHALL NOT BE REPRODUCED, COPIED, OR USED FOR ANY PURPOSE WITHOUT SPECIFIC WRITTEN PERMISSION.

SCALE
HORIZONTAL: 1"= 50'
VERTICAL: 1"= 50'
MP _____ TO MP _____
SHEET 09 OF 19
FILE: ECC-SIENNA VILLAGE

UNDERGROUND UTILITIES HAVE BEEN PLOTTED FROM AVAILABLE RECORDS AND FIELD OBSERVATIONS BUT ARE NOT NECESSARILY EXACT. IT IS THE CONTRACTORS RESPONSIBILITY TO FIELD LOCATE ALL UNDERGROUND OBSTRUCTIONS AND UTILITIES PRIOR TO CONSTRUCTION. COMPLETE REPAIR OF ANY AND ALL DAMAGES INCURRED SHALL BE AT THE EXPENSE OF THE CONTRACTOR.

RIGHT OF WAY LINES WERE ESTABLISHED BY RESEARCH OF PUBLIC INFORMATION. NO BOUNDARY SURVEY OR PROPERTY LINE SURVEY WAS ESTABLISHED BY _____. RIGHT OF WAY BOUNDARY MUST BE FIELD VERIFIED BY A REGISTERED PROFESSIONAL LAND SURVEYOR TO ACCURATELY VERIFY RIGHT OF WAY AND PROPERTY LINES PRIOR TO CONSTRUCTION.

!!! CAUTION !!!
PIPELINE SERVICE LINES
THRU THIS AREA HAVE NOT BEEN
IDENTIFIED NOR INDICATED.



CALL BEFORE YOU DIG
1-800-545-6005
48 HOURS NOTICE REQUIRED

SEE SHEET 10 TO MATCH SURVEY STA. 12+27

MISSOURI CITY, TX
FORT BEND COUNTY

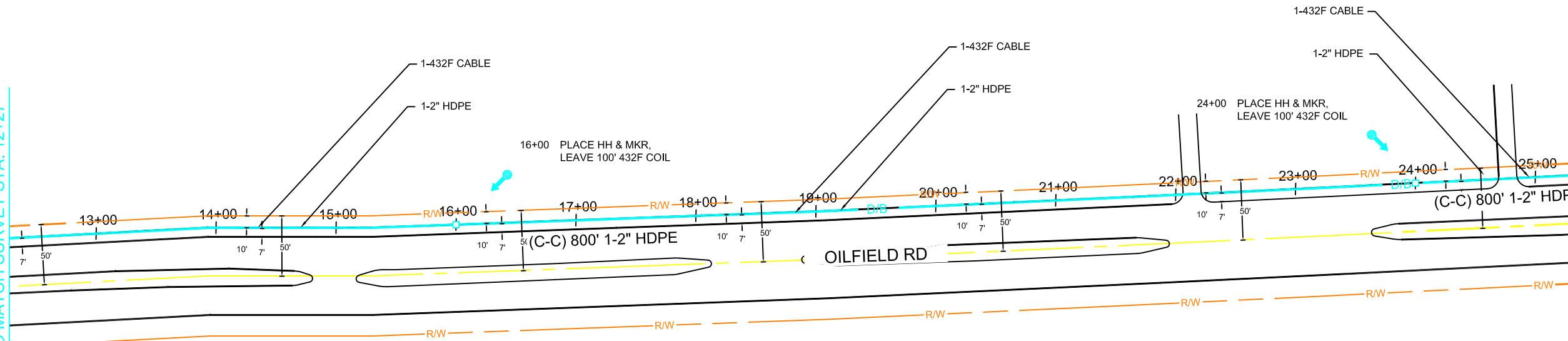


PROJECT:

MISSOURI CITY, TX
MISSOURI CITY/SIENNA VILLAGE LATERAL
NFID: 1706ANAY.013

| CLARIFICATION NO. | |
|-------------------|------|
| PLACE HANDHOLE | 2 |
| PULL 1-432F CABLE | 1521 |
| PROP. 1-2" HDPE | 1321 |
| PLACE MARKER | 2 |

SEE SHEET 9 TO MATCH SURVEY STA. 12+27



SEE SHEET 11 TO MATCH SURVEY STA. 25+48

MCImetro
ACCESS TRANSMISSION SERVICES
CORPORATION
OUTSIDE PLANT CONSTRUCTION
TITLE: FIBER OPTIC ROUTE
SIENNA VILLAGE RE-ROUTE
MISSOURI CITY, TX

DATE: 01/7/2018
ENGINEER: EAGLE EYE
DRAWN BY: ROBERT SANTOS

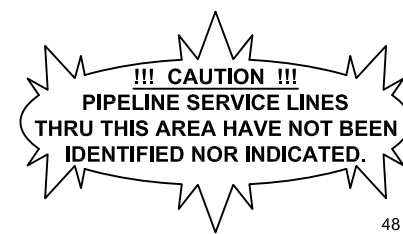
| REVISIONS | | |
|-----------|------|-------------|
| No. | DATE | DESCRIPTION |
| | | |
| | | |
| | | |
| | | |
| | | |
| | | |
| | | |
| | | |
| | | |
| | | |

EXCEPT AS MAY BE OTHERWISE PROVIDED BY CONTRACT, THESE DRAWINGS AND SPECIFICATIONS SHALL REMAIN THE PROPERTY OF MCI COMMUNICATIONS SERVICES INC. BOTH BEING ISSUED IN STRICT CONFIDENCE AND SHALL NOT BE REPRODUCED, COPIED, OR USED FOR ANY PURPOSE WITHOUT SPECIFIC WRITTEN PERMISSION.

SCALE
HORIZONTAL: 1"= 50'
VERTICAL: 1"= 50'
MP _____ TO MP _____
SHEET 10 OF 19
FILE: ECC-SIENNA VILLAGE

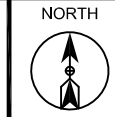
UNDERGROUND UTILITIES HAVE BEEN PLOTTED FROM AVAILABLE RECORDS AND FIELD OBSERVATIONS BUT ARE NOT NECESSARILY EXACT. IT IS THE CONTRACTORS RESPONSIBILITY TO FIELD LOCATE ALL UNDERGROUND OBSTRUCTIONS AND UTILITIES PRIOR TO CONSTRUCTION. COMPLETE REPAIR OF ANY AND ALL DAMAGES INCURRED SHALL BE AT THE EXPENSE OF THE CONTRACTOR.

RIGHT OF WAY LINES WERE ESTABLISHED BY RESEARCH OF PUBLIC INFORMATION. NO BOUNDARY SURVEY OR PROPERTY LINE SURVEY WAS ESTABLISHED BY _____. RIGHT OF WAY BOUNDARY MUST BE FIELD VERIFIED BY A REGISTERED PROFESSIONAL LAND SURVEYOR TO ACCURATELY VERIFY RIGHT OF WAY AND PROPERTY LINES PRIOR TO CONSTRUCTION.



CALL BEFORE YOU DIG
1-800-545-6005
48 HOURS NOTICE REQUIRED

MISSOURI CITY, TX
FORT BEND COUNTY



PROJECT:

MISSOURI CITY, TX

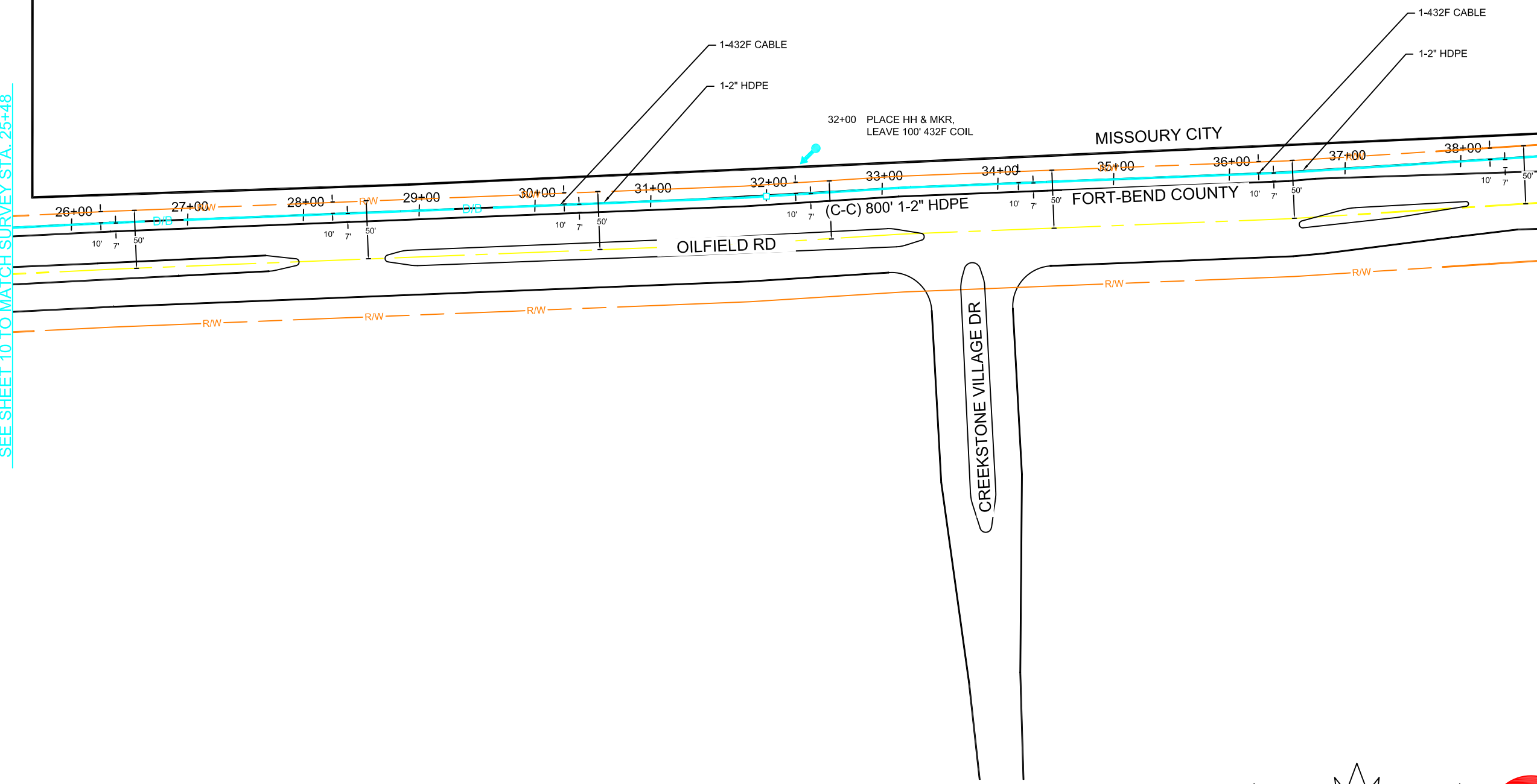
MISSOURI CITY/SIENNA VILLAGE LATERAL

NFID: 1706ANAY.013

| CLARIFICATION NO. | |
|-------------------|------|
| PLACE HANDHOLE | 1 |
| PULL 1-432F CABLE | 1420 |
| PROP. 1-2" HDPE | 1320 |
| PLACE MARKER | 1 |

SEE SHEET 10 TO MATCH SURVEY STA. 25+48

SEE SHEET 12 TO MATCH SURVEY STA. 38+68



MCImetro
ACCESS TRANSMISSION SERVICES
CORPORATION
OUTSIDE PLANT CONSTRUCTION
TITLE: FIBER OPTIC ROUTE
SIENNA VILLAGE RE-ROUTE
MISSOURI CITY, TX

DATE: 01/7/2018

ENGINEER: EAGLE EYE

DRAWN BY: ROBERT SANTOS

REVISIONS

| No. | DATE | DESCRIPTION |
|-----|------|-------------|
| | | |
| | | |
| | | |
| | | |
| | | |
| | | |
| | | |
| | | |
| | | |
| | | |

EXCEPT AS MAY BE OTHERWISE PROVIDED BY CONTRACT, THESE DRAWINGS AND SPECIFICATIONS SHALL REMAIN THE PROPERTY OF MCI COMMUNICATIONS SERVICES INC. BOTH BEING ISSUED IN STRICT CONFIDENCE AND SHALL NOT BE REPRODUCED, COPIED, OR USED FOR ANY PURPOSE WITHOUT SPECIFIC WRITTEN PERMISSION.

SCALE

HORIZONTAL: 1"= 50'

VERTICAL: 1"= 50'

MP _____ TO MP _____

SHEET 11 OF 19

FILE: ECC-SIENNA VILLAGE

UNDERGROUND UTILITIES HAVE BEEN PLOTTED FROM AVAILABLE RECORDS AND FIELD OBSERVATIONS BUT ARE NOT NECESSARILY EXACT. IT IS THE CONTRACTORS RESPONSIBILITY TO FIELD LOCATE ALL UNDERGROUND OBSTRUCTIONS AND UTILITIES PRIOR TO CONSTRUCTION. COMPLETE REPAIR OF ANY AND ALL DAMAGES INCURRED SHALL BE AT THE EXPENSE OF THE CONTRACTOR.

RIGHT OF WAY LINES WERE ESTABLISHED BY RESEARCH OF PUBLIC INFORMATION. NO BOUNDARY SURVEY OR PROPERTY LINE SURVEY WAS ESTABLISHED BY _____ . RIGHT OF WAY BOUNDARY MUST BE FIELD VERIFIED BY A REGISTERED PROFESSIONAL LAND SURVEYOR TO ACCURATELY VERIFY RIGHT OF WAY AND PROPERTY LINES PRIOR TO CONSTRUCTION.

!!! CAUTION !!!
PIPELINE SERVICE LINES
THRU THIS AREA HAVE NOT BEEN
IDENTIFIED NOR INDICATED.



CALL BEFORE YOU DIG
1-800-545-6005
48 HOURS NOTICE REQUIRED

MISSOURI CITY, TX
FORT BEND COUNTY



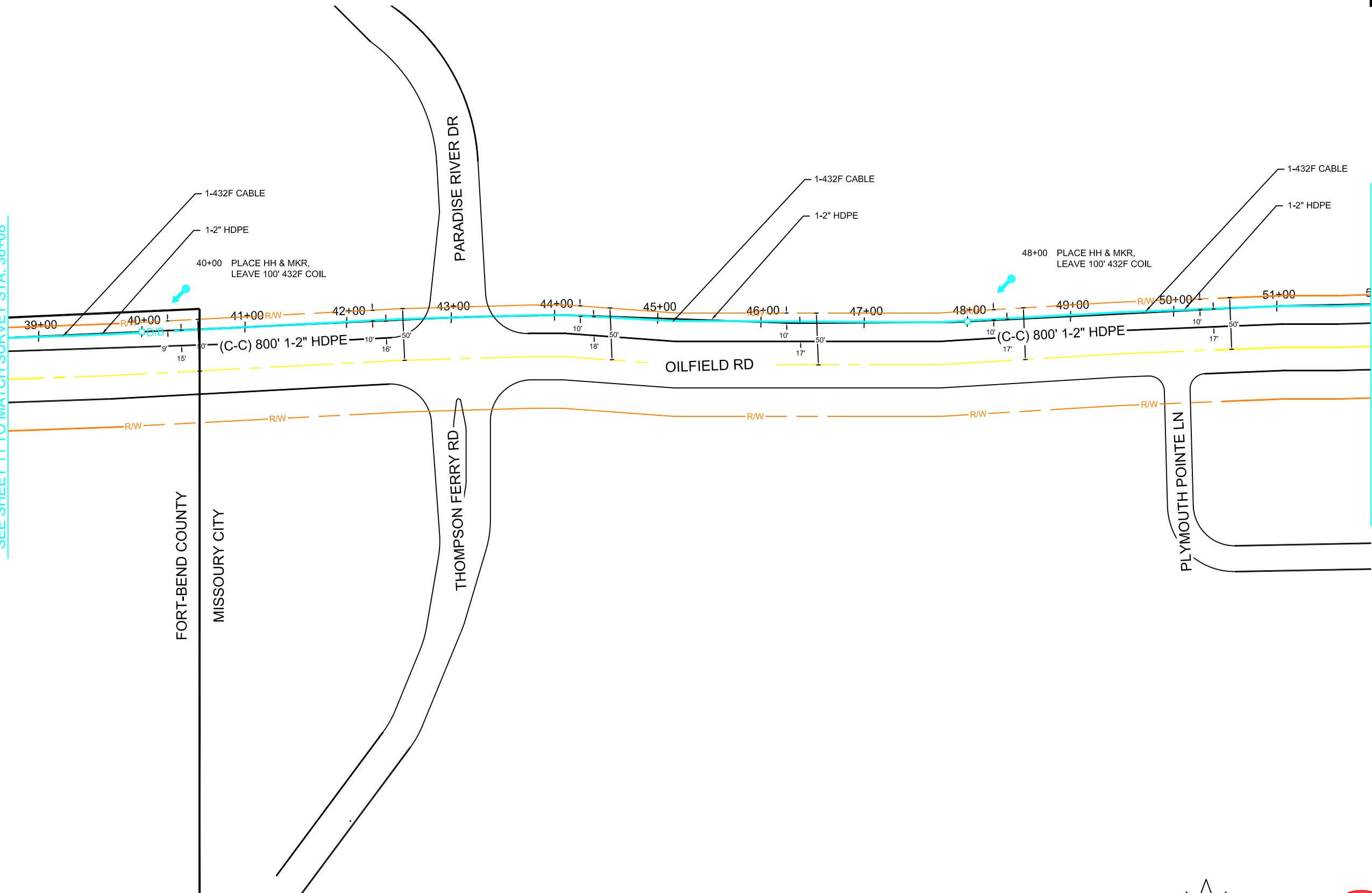
PROJECT:

MISSOURI CITY, TX
MISSOURI CITY/SIENNA VILLAGE LATERAL
NFID: 1706ANAY.013

| CLARIFICATION NO. | |
|-------------------|------|
| PLACE HANDHOLE | 2 |
| PULL 1-432F CABLE | 1522 |
| PROP. 1-2" HDPE | 1322 |
| PLACE MARKER | 2 |

SEE SHEET 11 TO MATCH SURVEY STA. 38+68

SEE SHEET 13 TO MATCH SURVEY STA. 51+90



MCImetro
ACCESS TRANSMISSION SERVICES
CORPORATION
OUTSIDE PLANT CONSTRUCTION
TITLE: FIBER OPTIC ROUTE
SIENNA VILLAGE RE-ROUTE
MISSOURI CITY, TX

DATE: 01/7/2018
ENGINEER: EAGLE EYE
DRAWN BY: ROBERT SANTOS

| REVISIONS | | |
|-----------|------|-------------|
| No. | DATE | DESCRIPTION |
| | | |
| | | |
| | | |
| | | |
| | | |
| | | |
| | | |
| | | |
| | | |
| | | |

EXCEPT AS MAY BE OTHERWISE PROVIDED BY CONTRACT, THESE DRAWINGS AND SPECIFICATIONS SHALL REMAIN THE PROPERTY OF MCI COMMUNICATIONS SERVICES INC. BOTH BEING ISSUED IN STRICT CONFIDENCE AND SHALL NOT BE REPRODUCED, COPIED, OR USED FOR ANY PURPOSE WITHOUT SPECIFIC WRITTEN PERMISSION.

SCALE
HORIZONTAL: 1"= 50'
VERTICAL: 1"= 50'
MP _____ TO MP _____
SHEET 12 OF 19
FILE: ECC-SIENNA VILLAGE

UNDERGROUND UTILITIES HAVE BEEN PLOTTED FROM AVAILABLE RECORDS AND FIELD OBSERVATIONS BUT ARE NOT NECESSARILY EXACT. IT IS THE CONTRACTORS RESPONSIBILITY TO FIELD LOCATE ALL UNDERGROUND OBSTRUCTIONS AND UTILITIES PRIOR TO CONSTRUCTION. COMPLETE REPAIR OF ANY AND ALL DAMAGES INCURRED SHALL BE AT THE EXPENSE OF THE CONTRACTOR.

RIGHT OF WAY LINES WERE ESTABLISHED BY RESEARCH OF PUBLIC INFORMATION. NO BOUNDARY SURVEY OR PROPERTY LINE SURVEY WAS ESTABLISHED BY _____ . RIGHT OF WAY BOUNDARY MUST BE FIELD VERIFIED BY A REGISTERED PROFESSIONAL LAND SURVEYOR TO ACCURATELY VERIFY RIGHT OF WAY AND PROPERTY LINES PRIOR TO CONSTRUCTION.

!!! CAUTION !!!
PIPELINE SERVICE LINES
THRU THIS AREA HAVE NOT BEEN
IDENTIFIED NOR INDICATED.



CALL BEFORE YOU DIG
1-800-545-6005
48 HOURS NOTICE REQUIRED