

**REVIEW BY FORT BEND COUNTY
COMMISSIONERS COURT**

**Fort Bend County
Engineering Department**
301 Jackson Suite 401
Richmond, Texas 77469
281.633.7500
Permits@fortbendcountytx.gov

Right of Way Permit
 Commercial Driveway Permit
Permit No: 2018-18192

Applicant: MCI Access Transmission Services, Corp/Golden Field Services

Job Location Site: Westernfield lane, Katy, TX 77450

Bond No. **Date of Bond:** 7/26/2016 **Amount:** \$50,000.00

The above applicant came to make use of certain Fort Bend County property subject to, "The Order Regulating the Laying, Construction, Maintenance, and Repair of Buried Cables, Conduits, and Pole Lines, In, Under, Across or Along Roads, Streets, Highways, and Drainage Ditches in Fort Bend County, Texas, Under the Jurisdiction of the Commissioners Court of Fort Bend County, Texas," as passed by the Commissioners Court of Fort Bend County, Texas, of the Minutes of the Commissioners Court of Fort Bend County, Texas, to the extent that such order is not inconsistant with Chapter 181, Vernon's Texas Statutes and Codes Annotated.

Notes:

1. Evidence of review by the Commissioners Court must be kept on the job site and failure to do so constitutes grounds for job shutdown.
2. Written notices are required:
 - a. 48 hours in advance of construction start up, and
 - b. When construction is completed and ready for final inspection, submit notification to Permit Administrator thru MyGovernmentOnline.org portal.
3. This permit expires one (1) year from date of permit if construction has not commenced.

On this 6th day of February, 2018, Upon Motion of Commissioner Meyers, seconded by Commissioner Morales, duly put and carried, it is ORDERED, ADJUDGED AND DECREED that said notice of said above purpose is hereby acknowledged by the Commissioners Court of Fort Bend County, Texas, and that said notice be placed on record according to the regulation order thereof.

Signature

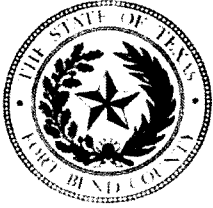
Presented to Commissioners Court and approved.

By: Charles O. Ay
County Engineer

Date Recorded 2-12-2018 Comm. Court No. 15F

N/A
By: _____
Drainage District Engineer/Manager

Clerk of Commissioners Court
By: Ronda Willis
Deputy



**PERMIT APPLICATION REVIEW FORM FOR
CABLE, CONDUIT, AND POLE LINE ACTIVITY
IN FORT BEND COUNTY**

**Fort Bend County
Engineering Department**
301 Jackson Suite 401
Richmond, Texas 77469
281.633.7500
Permits@fortbendcountytx.gov

- Right of Way Permit
 Commercial Driveway Permit

Permit No: 2018-18192

The following "Notice of Proposed Cable, Conduit, and/or Pole Line activity in Fort Bend County" and accompanying attachments have been reviewed and the notice conforms to appropriate regulations set by Commissioner's Court of Fort Bend County, Texas.

(1) COMPLETE APPLICATION FORM:

- a. Name of road, street, and/or drainage ditch affected.
 b. Vicinity map showing course of directions
 c. Plans and specifications

(2) BOND:

- County Attorney, approval when applicable.
- Perpetual bond currently posted. Bond No: Amount: \$50,000.00
- Performance bond submitted. Bond No: Amount:
- Cashier's Check Check No: Amount:

(3) DRAINAGE DISTRICT APPROVAL (WHEN APPLICABLE):

Drainage District Approval

Date

We have reviewed this project and agree it meets minimum requirements.

Charles O. Ay

Permit Administrator

1/26/2018

Date

MCImetro

ACCESS TRANSMISSION SERVICES CORPORATION

OUTSIDE PLANT CONSTRUCTION

FIBER OPTIC CABLE ROUTE

ECC FIBER BUIDL: 1708AOZQ.044

MASON TO CINCO RANCHO

CINCO RANCHO

SITE CODE: HODATX

PROJECT STATUS: CONSTRUCTION

DATE: 1/19/19

Construction notes:
48 Hour Notice: Contractor shall notify HARRIS COUNTY
prior to commencing construction and/or backfilling any utilities.
Contractor(s) to contact Public Review Department
@ (713-274-3931) or public.review@hcpid.org
Ensure minimum burial 4' from BOC.

MCI OUTSIDE PLANT FOCUS

FIBER OPTIC CABLE UNCOVERING SYSTEM

1. THE TITLE OF THIS PROGRAM, F.O.C.U.S., AN ACRONYM FOR FIBER OPTIC CABLE UNCOVERING SYSTEM, WAS SELECTED TO REMIND EVERYONE INVOLVED WITH WORKING NEAR MCI'S ACTIVE FIBER OPTIC SYSTEMS TO FOCUS ON PROTECTING THE FACILITIES. IF DURING THE COURSE OF THE PROJECT YOU NOTICE ANY ACTIVITY WHICH MAY JEOPARDIZE THE MCI OSP FACILITIES, IT IS YOUR DUTY TO STOP THE WORK AND REF-O.C.U.S.
2. F.O.C.U.S. RULES MUST BE FOLLOWED ON ALL MCI PROJECTS INVOLVING WORK ON OR NEAR MCI OSP FACILITIES. SAFETY IS MCI'S NUMBER ONE PRIORITY; EVERYONE MUST REFRAIN FROM UNSAFE AND IMPROPER PRACTICES.
3. REVIEW OF F.O.C.U.S. IS MANDATORY AT EVERY PRE-BID, PRE-CONSTRUCTION SITE MEETING AND DAILY TAG/SAFE MEETING. F.O.C.U.S. DISCUSSION MUST INCLUDE SITE SPECIFIC HISTORY, UNIQUE PROBLEMS, FACILITY CONFIGURATIONS THAT MAY BE ENCOUNTERED, AND PAST ERRORS. *THOSE WHO DO NOT LEARN FROM HISTORY ARE DOOMED TO REPEAT IT*. DO NOT LET THIS HAPPEN TO YOU.
4. ANY WORK NEAR OR REQUIRING HANDLING OF MCI OUTSIDE PLANT FACILITIES CAN ONLY BE PERFORMED WITH AN MCI EMPLOYEE OR CONTRACT REPRESENTATIVE PRESENT - THIS MEANS OUT OF HIS OR HER VEHICLE AND DIRECTLY MONITORING THE WORK. THE REPRESENTATIVE MUST HAVE A PROPERLY OPERATING CABLE LOCATOR CHECKED FOR ACCURACY EVERY DAY PRIOR TO COMMENCEMENT OF WORK (COMPARISON OF LINE AND DEPTH READINGS TO ACTUAL LINE AND DEPTH OF THE CABLE).
5. LOCATE AND POTHOLE REQUIREMENTS:
 - PRIOR TO ANY EXCAVATION, THE MCI EMPLOYEE OR CONTRACT REPRESENTATIVE MUST VERIFY THE INITIAL LOCATE MARKS COMPLETED BY MCI OPERATIONS. DO NOT TRUST LOCATE RESULTS COMPLETED BY OTHERS. THE MCI OR CONTRACT REPRESENTATIVE MUST LOCATE THE CABLE RUNNING LINE BY MAKING AT LEAST ONE PASS IN EACH DIRECTION. LOCATE RESULTS MUST THEN BE COMPARED WITH PREVIOUS MARKS AND THE AS-BUILTS.
 - IF THE PROPOSED WORK INVOLVES DIGGING OR EXCAVATING WITHIN 3 FEET OF THE CABLE, THE CABLE ROUTE WILL BE MARKED CONTINUALLY WITH ORANGE PAINT AND SUPPLEMENTED BY MARKER FLAGS PLACED EVERY 10 FT. THE EXCAVATION CONTRACTOR MUST POTHOLE ALL POTHOLES MUST BE COMPLETED BY HAND DIGGING OR VACUUM EXCAVATION. A MINIMUM OF EVERY 15 FT., THEN EXPOSE THE ENTIRE LENGTH OF THE CABLE BY HAND DIGGING OR VACUUM EXCAVATION.
 - IF THE PROPOSED WORK INVOLVES DIGGING OR EXCAVATING WITHIN 5 FEET (BUT NOT CLOSER THAN 3 FEET) OF THE CABLE, THE CABLE ROUTE WILL BE MARKED CONTINUALLY WITH ORANGE PAINT AND SUPPLEMENTED BY MARKER FLAGS PLACED EVERY 10 FT. THE EXCAVATION CONTRACTOR MUST POTHOLE THE CABLE A MINIMUM OF EVERY 15 FT.
 - IF THE PROPOSED WORK INVOLVES DIGGING OR EXCAVATING WITHIN 5 FEET (BUT NOT CLOSER THAN 3 FEET) OF THE CABLE, THE CABLE ROUTE WILL BE MARKED CONTINUALLY WITH ORANGE PAINT AND SUPPLEMENTED BY MARKER FLAGS PLACED EVERY 10 FT. THE EXCAVATION CONTRACTOR MUST POTHOLE THE CABLE A MINIMUM OF EVERY 15 FT.
 - THE CABLE WILL ALSO BE POTHOLED AT ANY CHANGE IN THE RUNNING LINE OF MORE THAN 1 FT. IN ANY DIRECTION. ANYTIME THE ACCURACY OF THE ELECTRONIC LOCATE IS QUESTIONED, OR THE MARKED RUNNING LINE DOES NOT MATCH THE AS-BUILTS.
6. EXPOSING REQUIREMENTS:
 - NO MECHANICAL EXCAVATION WITHIN 3 FT. OF OSP FACILITIES WILL BE ALLOWED UNLESS THE FACILITIES HAVE FIRST BEEN PROPERLY LOCATED, POTHOLED, POSITIVELY IDENTIFIED, CONTINUOUSLY EXPOSED BY HAND DIGGING OR VACUUM EXCAVATION, AND THE FACILITIES ARE CLEARLY VISIBLE.
 - IN ADDITION, MECHANICAL EXCAVATION WITHIN 3 FT. OF OSP FACILITIES REQUIRES ON-SITE PRIOR APPROVAL FROM MCI'S EMPLOYEE OR CONTRACT REPRESENTATIVE.
7. PLEASE REFER TO THE LATEST EDITION OF THE MCI OSP HANDBOOK FOR ADDITIONAL DETAILS. KNOW IT AND FOLLOW IT!

MCI OUTSIDE PLANT CONSTRUCTION GENERAL REQUIREMENTS

- ALL FEDERAL, STATE AND LOCAL SAFETY REGULATIONS MUST BE FOLLOWED WITHOUT EXCEPTION.
- PERSONAL PROTECTIVE EQUIPMENT APPROPRIATE FOR THE SPECIFIC WORK SITE SHALL BE USED AT ALL TIMES. AT A MINIMUM, HARD HAT, SAFETY SHOES/STEEL-TOED BOOTS, AND FLORESCENT ORANGE OR GREEN WORK VEST ARE REQUIRED UPON ENTERING ANY MCI WORK SITE.
- USE OF INTOXICANTS, DRUGS, INHALANTS OR ANY OTHER SUBSTANCES THAT MAY IMPAIR ALERTNESS ARE STRICTLY PROHIBITED.
- CONTRACTORS ARE NOT ALLOWED TO CUT ANY CABLE. CABLES SCHEDULED FOR REMOVAL WILL BE CUT BY MCI OPERATIONS PERSONNEL, AND ONLY AFTER VERIFICATION THAT ALL TRAFFIC HAS BEEN OFF-LOADED.
- EXTREME CAUTION MUST BE USED AT ALL TIMES WHEN WORKING ON OR NEAR ACTIVE CABLES. AN MCI EMPLOYEE OR CONTRACT REPRESENTATIVE MUST APPROVE AND BE PRESENT PRIOR TO AND DURING ALL CABLE HANDLING ACTIVITIES.
- TOOLS AND EQUIPMENT SPECIFICALLY DESIGNED FOR THE JOB AT HAND ARE REQUIRED. USE THE PROPER TOOL FOR THE JOB.
- CONDUIT WORK INVOLVING ACTIVE CABLES REQUIRES SPECIALIZED TOOLS SPECIFICALLY DESIGNED TO ACCESS DUCTS WITH ACTIVE CABLES.
- PROTECTING MCI FACILITIES IS EXTREMELY IMPORTANT; HOWEVER, SAFETY REGARDING YOURSELF AND OTHERS IS THE MOST IMPORTANT PART OF ANY PROJECT.



PROJECT: 1708A022/044
HOUSTON, TX
MASON TO CINCO RANCH

MCI Metro
ACCESS TRANSMISSION SERVICES
CORPORATION
OUTSIDE PLANT CONSTRUCTION
TITLE: FIBER OPTIC ROUTE
MASON TO CINCO RANCH
HOUSTON, TX

DATE: 1/18/19
ENGINEER: L. STALCUP
DRAWN BY: G.F.S. (TJS)
REVISIONS

NO.	DATE	DESCRIPTION	BY

SCALE
HORIZONTAL: 1"= N/A
VERTICAL: 1"= N/A
MP TO MP
SHEET 1A OF 21
FILE: ECG#86801004.BC.LIN

CLARIFICATION SUMMARY SHEET PROJECT SPECIFIC

PROJECT CLARIFICATION SUMMARY

DESCRIPTION	QUANTITY	UNIT
PLACE (30"x60"x30") HANDHOLE	21	EA
PLACE 1-2" HDPE (SDR 11) CONDUIT	12,043'	LF
PLACE 2-2" HDPE (SDR 11) CONDUIT	117'	LF
PULL 1-864F CABLE (12160' IN NEW CONDUIT; 490' IN EXISTING CONDUIT; 2225' IN COILS; & 50' IN RISERS)	14,925'	LF
PLACE 1-6M AERIAL STRAND (INCLUDES ALL HARDWARE, LOOP EQUIPMENT & 275' IN GUYS)	2,212'	LF
LASH 1-864F CABLE (200' IN SLACK LOOPS)	2,137'	LF
ATTACH (25) 2" U-GUARD RISER	2	EA
(PLACE) DOWN GUY & ANCHOR	11	EA
PLACE (BURIED CABLE) MARKER	21	EA



PROJECT: 1706020104
HOUSTON, TX
MASON TO CINCO RANCH

MCImetro
ACCESS TRANSMISSION SERVICES
CORPORATION

OUTSIDE PLANT CONSTRUCTION

TITLE: FIBER OPTIC ROUTE
MASON TO CINCO RANCH
HOUSTON, TX

DATE: 11/9/19
ENGINEER: L. STALCUP
DRAWN BY: G.F.S. (TJS)

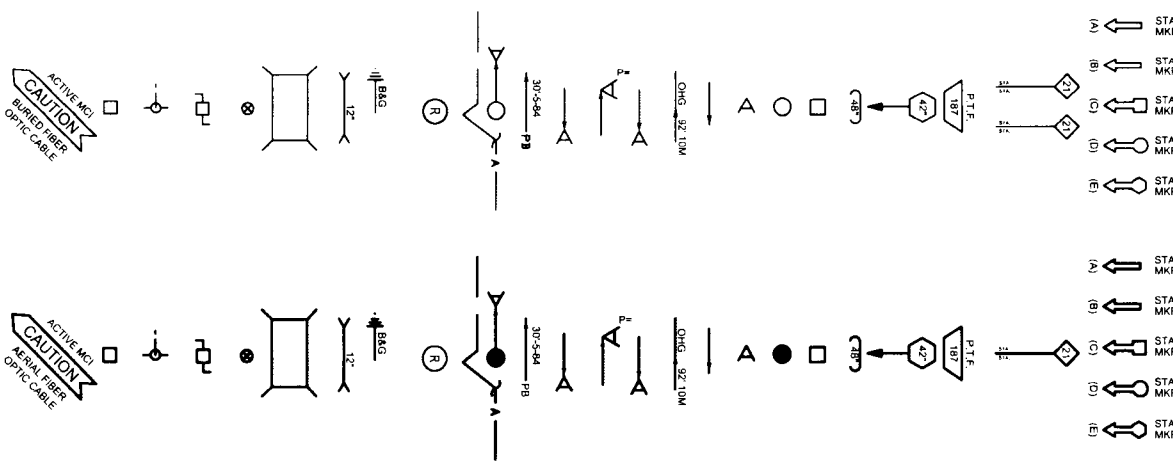
REVISIONS	
NO.	DESCRIPTION

SCALE
HORIZONTAL: 1"= N/A
VERTICAL: 1"= N/A
MP TO MP
SHEET 46 OF 21
FILE: EGC4888B00100DCLIN

SYMBOLS KEY

	EXISTING	PROPOSED
DIRECT BURIED CABLE	---	---
AERIAL CABLE	—▲—	—▲—
SUBMARINE CABLE	—SUBM—	—SUBM—
FOGWIRE CABLE	—FOGW—	—FOGW—
DIRECT BURIED HOPE	—H—	—H—
PVC OR SPLIT PVC CONDUIT	—	—
BSPIGSP OR SPLIT BSPIGSP CONDUIT	—	—
STEEL CASING	—	—
REMOVE AND RESTORE ASPHALT OR CONCRETE (WIDTH AS INDICATED)	—48"—	—48"—
CORE BORE	—	—
JACK AND BORE	—	—
DIRECTIONAL BORE (A PLACE CONDUIT)	—DB—	—DB—
FUTURE CABLE	—	—
REMOVE CABLE	—X—	—X—
TO BE REMOVED OR ABANDONED (SHOWN FOR HOPE)	—X—	—X—
AERIAL UTILITY (ELECTRIC)	—E—	—E—
UNDERGROUND UTILITY (TELEPHONE)	—T—	—T—
MAIN TRACKS	—	—
AUXILIARY TRACKS	—	—
CENTERLINE	—CL—	—CL—
RIGHT-OF-WAY	—RW—	—RW—
EDGE OF ROADWAY (GENERIC)	—EOP—	—EOP—
EDGE OF PAVEMENT	—	—
BACK OF CURB	—BOC—	—BOC—
DITCH LINE	—	—
TAX, CITY, COUNTY, OR STATE BOUNDARY LINE	—	—
PROPERTY LINE	—	—
FENCE LINE	—FL—	—FL—
GUARDRAIL	—	—
TOP OF SLOPE	—	—
TOE OF SLOPE	—	—

STEEL MARKER AND SIGN-(A)	▲
ALUMINUM HUB-STYLE MARKER-(B)	○
FLAT MARKER-(C)	□
TUBULAR MARKER-(D)	◇
TUBULAR MARKER & ISOLATOR PROTECTOR-(E)	◇
MILE POST MARKER	—
NOTE: DASHED = NOT FOUND IN FIELD	
PERMIT TRACKING FORM IDENTIFIER	PTF
ROCK PROBE (DEPTH AS INDICATED)	48"
UTILITY COVER DEPTH	48"
HANDHOLE, MANHOLE OR PULLBOX	—
POLE	—
ANCHOR ONLY	—
GUY ONLY	—
OVERHEAD GUY (ARROW IN DIRECTION OF PULL)	—
ANCHOR AND GUY	—
SIDEWALK ANCHOR AND GUY	—
FOREIGN ANCHOR AND GUY	—
PUSH BRACE (EXISTING POLE)	—
ACCOUNT CODE CHANGE (BURIED TO AERIAL)	—
RISER ATTACHMENT LOCATION	—
BOND AND GROUND	—
CULVERT (SIZE AS INDICATED)	—
BRIDGE	—
WATER METER	—
GAS VALVE	—
FIRE HYDRANT	—
RAILROAD SIGNAL CONTROL BOX	—
CAUTION NOTE	—



Vertical

PROJECT: 1708A020344

HOUSTON, TX

MASON TO CINCO RANCH

Vertical

MCImetro

ACCESS TRANSMISSION SERVICES CORPORATION

OUTSIDE PLANT CONSTRUCTION

TITLE: FIBER OPTIC ROUTE

MASON TO CINCO RANCH

HOUSTON, TX

DATE: 1/19/19

ENGINEER: L. STALCUP

DRAWN BY: G.F.S. (TJS)

No.	DATE	DESCRIPTION	BY

SCALE

HORIZONTAL: 1" = 100'

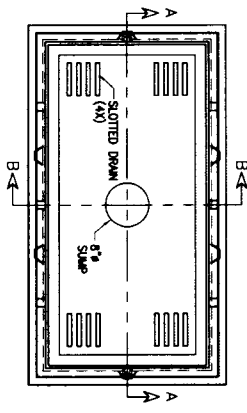
VERTICAL: 1" = 10'

SHEET 08 OF 21

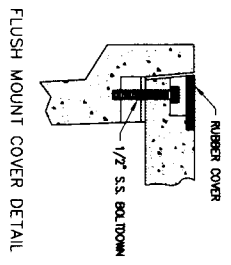
FILE: EOC-FBRBLD01005A-CALIN

30" x 60" x 30" 30K STANDARD HANDHOLE DETAILS

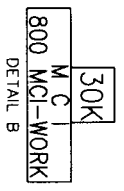
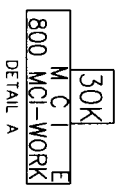
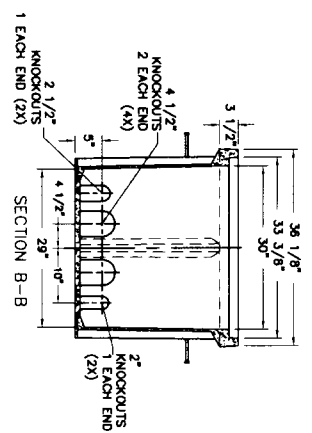
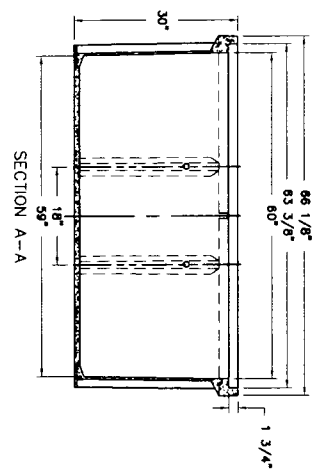
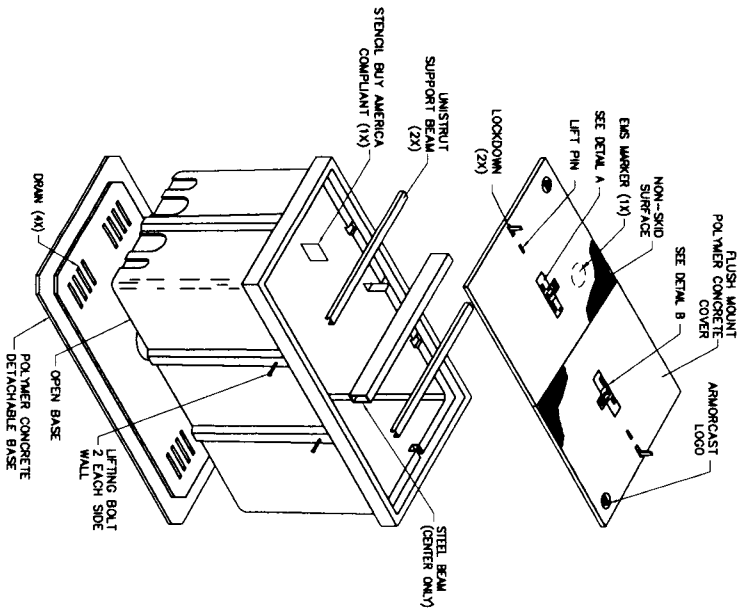
DETAIL "A"
LOCKING DEVICE
CROSS SECTION



DETAIL "B"
FLUSH MOUNT
COVER DETAIL



DETAIL "C"
EXPLODED ISOMETRIC DETAIL

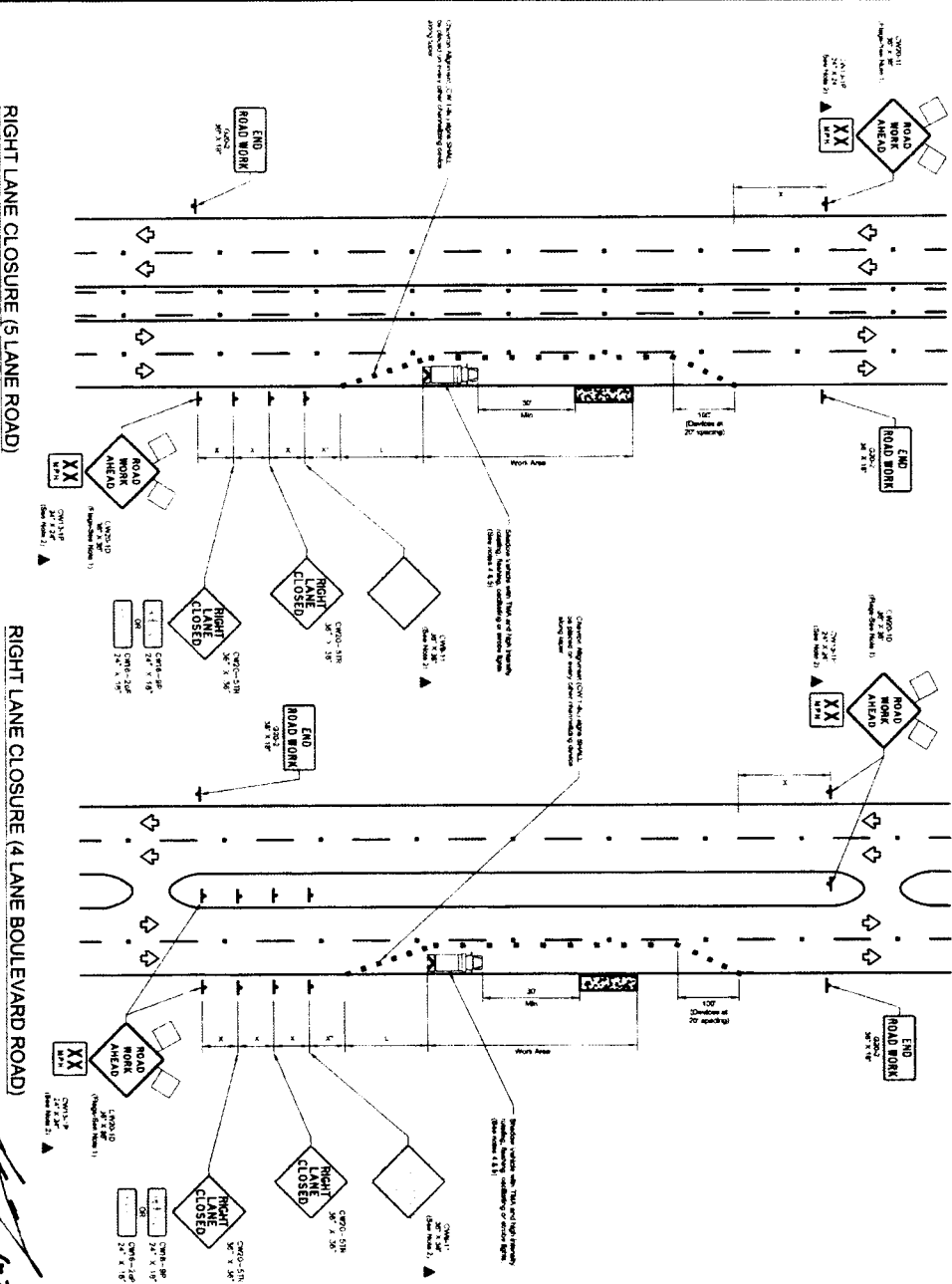


- SEALED PLASTIC BAG PLACED INSIDE VAULT TO CONTAIN
- ITEM QTY
 - 1 (1) JOHNNY LOCK KEY
 - 2 (2) S.S. JOHNNY BOLTS W/FLAT WASHER
 - 3 SHRINK WRAP COVERS TO FRAME FOR PACKAGING.

30K STANDARD HANDHOLE
30"x60"x30" POLYMER CONCRETE FLUSH MOUNT ASSEMBLY
MEETS SCTEANSI 77-TIER 22 LOADING CRITERIA
ADDITIONAL REQUIREMENTS:
DESIGNED LOAD: 30,000 LBS
MINIMUM FAILURE LOAD: 45,000 LBS

Verticalbusiness		PROJECT: 1706A02.004	
		HOUSTON, TX	
		MASON TO CINCO RANCH	
MCI metro ACCESS TRANSMISSION SERVICES CORPORATION			
OUTSIDE PLANT CONSTRUCTION			
TITLE: FIBER OPTIC ROUTE MASON TO CINCO RANCH HOUSTON, TX			
DATE: 1/18/19	ENGINEER: L. STALCUP		
DRAWN BY: G.F.S. (TJS)			
REVISIONS			
NO.	DATE	DESCRIPTION	BY
SCALE			
HORIZONTAL: 1" = N/A		VERTICAL: 1" = N/A	
MP	TO MP		
SHEET	OF	21	
FILE: ECC-FBRBLD01007ACLN			

TRAFFIC CONTROL PLAN DETAILS



NO.	REVISIONS	DATE	MADE
1	QUALIFIED DEPARTMENT NAME & CONTACT NOTES	07/10/10	BSH
2			
3			
4			
5			

TEO, LLC
3511 Houston, Texas
77060 OFFICE
713-466-0000 FAX
713-466-0000 PHONE

STEVEN A. STEIN
REGISTERED PROFESSIONAL ENGINEER
NO. 10412

1-22-18

TRAFFIC CONTROL PLAN SECTION SHALL BE COMPLETED BY ENGINEER

ROADWAY	RIGHT LANE LENGTH (FEET)	STREET CLOSURE LENGTH (FEET)	ROAD WORK SIGN PLACEMENT	RIGHT LANE LENGTH (FEET)
1	30	30	100'	100'
2	30	30	100'	100'
3	30	30	100'	100'
4	30	30	100'	100'
5	30	30	100'	100'
6	30	30	100'	100'
7	30	30	100'	100'
8	30	30	100'	100'
9	30	30	100'	100'
10	30	30	100'	100'
11	30	30	100'	100'
12	30	30	100'	100'
13	30	30	100'	100'
14	30	30	100'	100'
15	30	30	100'	100'
16	30	30	100'	100'
17	30	30	100'	100'
18	30	30	100'	100'
19	30	30	100'	100'
20	30	30	100'	100'
21	30	30	100'	100'
22	30	30	100'	100'
23	30	30	100'	100'
24	30	30	100'	100'
25	30	30	100'	100'
26	30	30	100'	100'
27	30	30	100'	100'
28	30	30	100'	100'
29	30	30	100'	100'
30	30	30	100'	100'

Verizon business

PROJECT: 170RA02044

HOUSTON, TX

MASON TO CINCO RANCH

MCImetro

ACCESS TRANSMISSION SERVICES CORPORATION

OUTSIDE PLANT CONSTRUCTION

TITLE: FIBER OPTIC ROUTE MASON TO CINCO RANCH HOUSTON, TX

DATE: 11/09/10
ENGINEER: L. STA. CLIP
DRAWN BY: G.F.S. (TJS)

NO.	DATE	REVISION	BY

SCALE
HORIZONTAL: 1" = 40'
VERTICAL: 1" = 40'

SHEET NO. 88 / 21
MP TO MP

FILE: ECC-FBRBL-001008-AC.LIN

CINCO RANCH
FT. BEND COUNTY



Vertzonbusiness
PROJECT: 1708A020.044
HOUSTON, TX
MASON TO CINCO RANCH

CLASSIFICATION NO.	QUANTITY
PLACE HANDHOLE	3
PROP. 1-2" HDPE	1387
PULL 1-864F CABLE	1587
PLACE MARKER	3

MCI metro
ACCESS TRANSMISSION SERVICES CORPORATION
OUTSIDE PLANT CONSTRUCTION
TITLE: FIBER OPTIC ROUTE
MASON TO CINCO RANCH
HOUSTON, TX

DATE: 1/18/19
ENGINEER: L. STALCUP
DRAWN BY: C.F.S. (TJD)

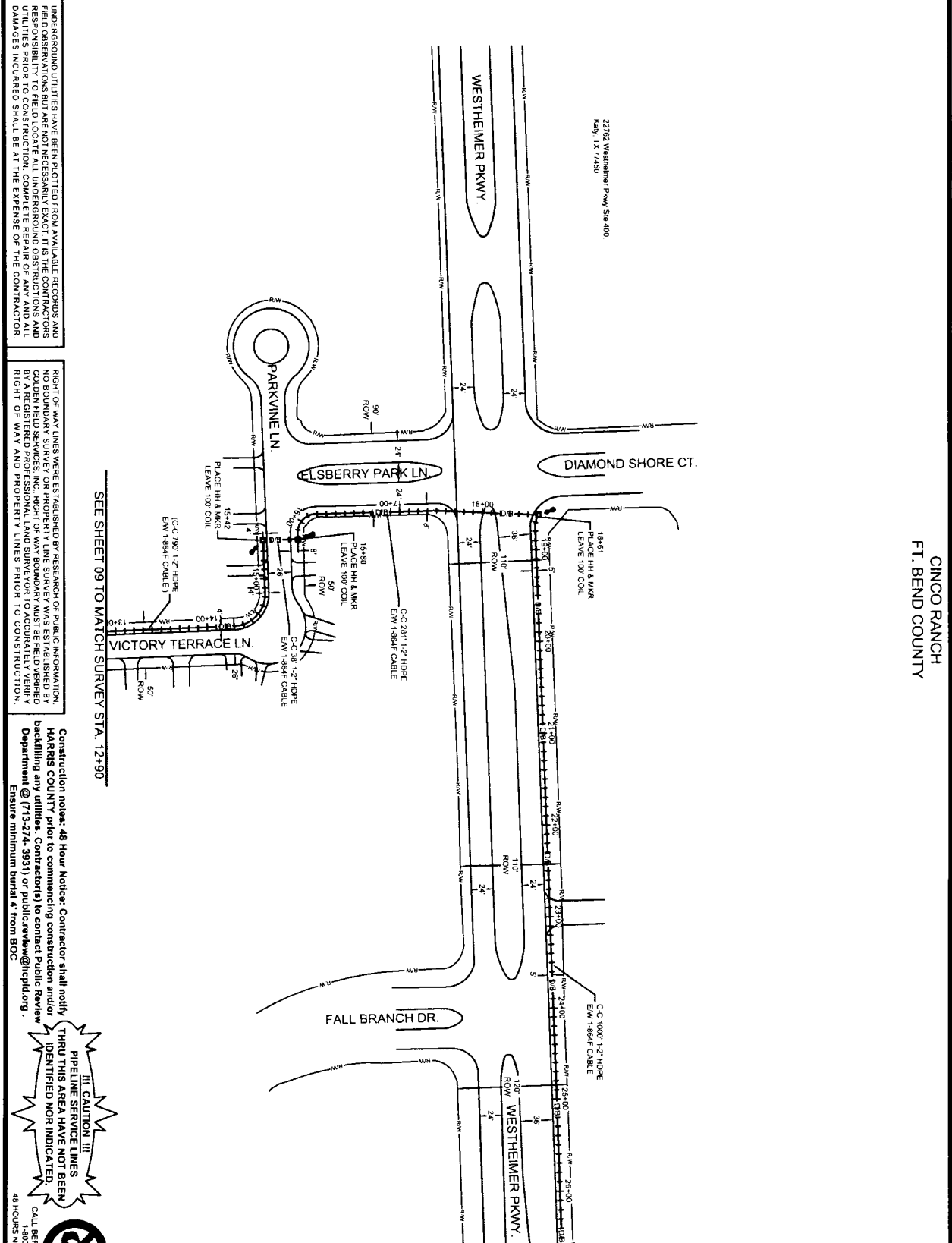
NO.	DATE	DESCRIPTION	BY

SCALE
HORIZONTAL: 1" = 100'
VERTICAL: 1" = N/A
MP TO MP
SHEET 10 OF 21
FILE: EOC498BUD001010A.CLN



SEE SHEET 09 TO MATCH SURVEY STA. 12+90

SEE SHEET 11 TO MATCH SURVEY STA. 26+70



UNDERGROUND UTILITIES HAVE BEEN PLOTTED FROM AVAILABLE RECORDS AND FIELD OBSERVATIONS BUT ARE NOT NECESSARILY EXACT. IT IS THE CONTRACTOR'S RESPONSIBILITY TO FIELD LOCATE ALL UNDERGROUND OBSTRUCTIONS AND DAMAGE'S INCURRED SHALL BE AT THE EXPENSE OF THE CONTRACTOR.

RIGHT OF WAY LINES WERE ESTABLISHED BY RESEARCH OF PUBLIC INFORMATION. NO BOUNDARY SURVEY OR PROPERTY LINE SURVEY WAS ESTABLISHED BY COLLATERAL SERVICES. THE FRONT OF PROPERTY LINES SHOWN TO EACH PLOT ARE ASSUMED TO BE CORRECT AND SHOWN TO CONFORM TO THE RIGHT OF WAY AND PROPERTY LINES PRIOR TO CONSTRUCTION.

Construction notes: 48 Hour Notice. Contractor shall notify HARRIS COUNTY prior to commencing construction and/or backfilling any utilities. Contractor(s) to contact Public Review Department @ (713)274-3931 or publicreview@hccpd.org. Ensure minimum burial 4' from BOC.

CINCO RANCH
FT. BEND COUNTY

HOUSTON, TX
HARRIS COUNTY

SEE SHEET 17 TO MATCH SURVEY STA. 87+30



Verizon
business

PROJECT: 178A02044
HOUSTON, TX
MASON TO CINCO RANCH

CLARIFICATION NO.	QUANTITY
PLACE HANDHOLE	1
PROP. 1.2" HOPE	860
BULL. 1.432" CABLE	860
PLACE MARKER	1

McMetro
ACCESS TRANSMISSION SERVICES
CORPORATION

OUTSIDE PLANT CONSTRUCTION

TITLE: FIBER OPTIC ROUTE
MASON TO CINCO RANCH
HOUSTON, TX

DATE: 1/18/19

ENGINEER: L. STALCUP

DRAWN BY: G.F.S. (TJD)

REVISIONS

NO.	DATE	DESCRIPTION	BY

HORIZONTAL: 1" = 100'
VERTICAL: 1" = N/A
SCALE

MP _____ TO MP _____
SHEET _____ OF _____
FILE: ECP-FBR1801018-ACLIN

CALL BEFORE YOU DIG
1-800-545-6005
48 HOURS NOTICE REQUIRED



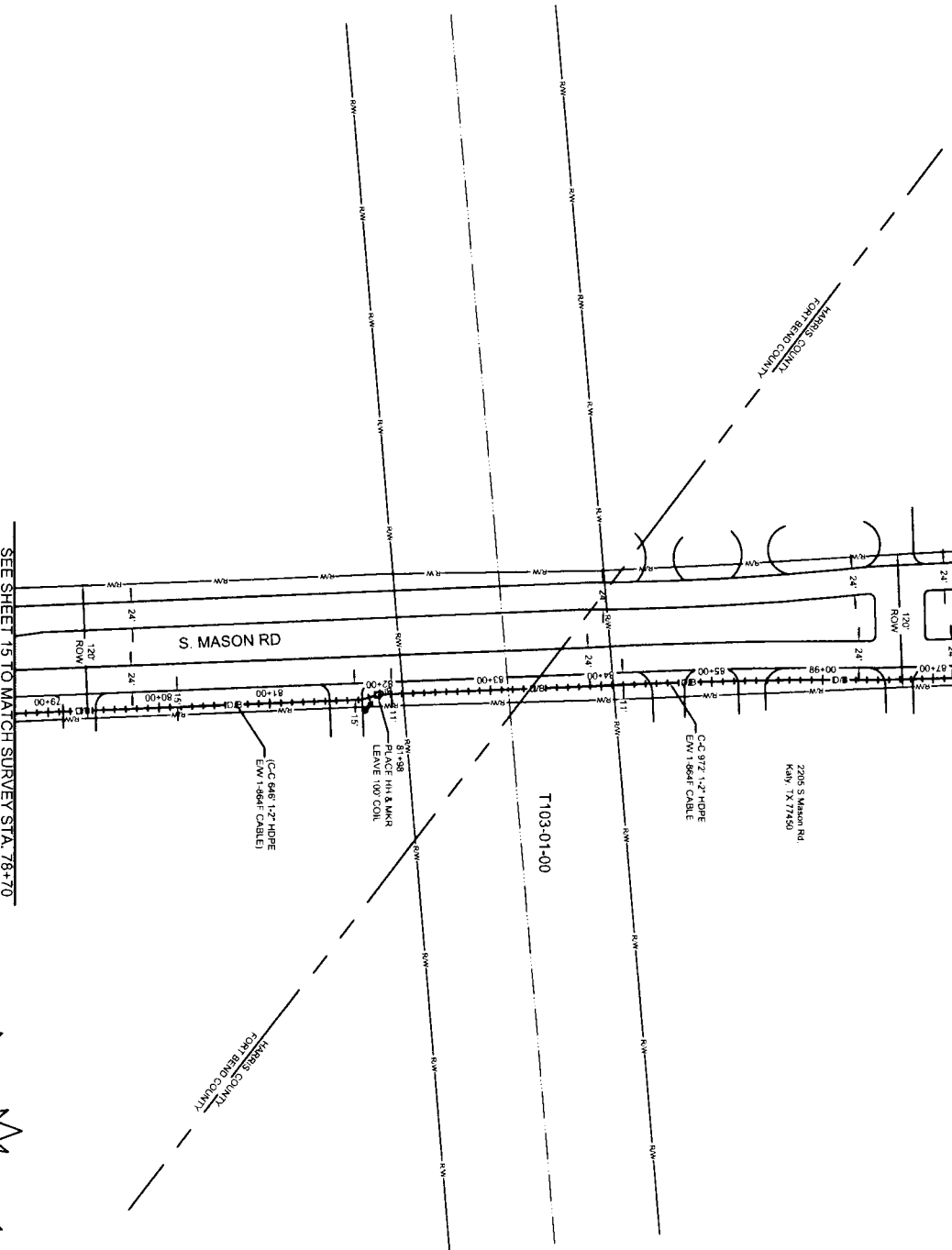
III CAUTION III
PIPELINE SERVICE LINES
THRU THIS AREA HAVE NOT BEEN
IDENTIFIED NOR INDICATED.

Construction notes: 48 Hour Notice: Contractor shall notify
HARRIS COUNTY prior to commencing construction and/or
backfilling any utilities. Contractor(s) to contact Public Review
Department @ (713) 274-3931 or public.review@hctd.org.
Ensure minimum burial & from BOC.

RIGHT OF WAY LINES WERE ESTABLISHED BY RESEARCH OF PUBLIC INFORMATION,
NO BOUNDARY SURVEY OR PROPERTY LINE SURVEY WAS ESTABLISHED BY
GOLDEN FIELD SERVICES, INC. RIGHT OF WAY BOUNDARY MUST BE FIELD VERIFIED
BY A REGISTERED PROFESSIONAL LAND SURVEYOR TO CONFIRMATION
RIGHT OF WAY AND PROPERTY LINES PRIOR TO CONSTRUCTION.

UNDERGROUND UTILITIES HAVE BEEN OBTAINED FROM AVAILABLE RECORDS AND
FIELD OBSERVATIONS BUT ARE NOT NECESSARILY EXACT. IT IS THE CONTRACTOR'S
RESPONSIBILITY TO FIELD LOCATE ALL UNDERGROUND OBSTRUCTIONS AND
UTILITIES PRIOR TO CONSTRUCTION. COMPLETE REPAIR OF ANY AND ALL
DAMAGES INCURRED SHALL BE AT THE EXPENSE OF THE CONTRACTOR.

SEE SHEET 15 TO MATCH SURVEY STA. 78+70



T103-01-00

2205 S Mason Rd
Katy, TX 77450

CC 972' 1.2" HOPE
EW 1.864" CABLE

CC 646' 1.2" HOPE
EW 1.864" CABLE

PLACE HIN & MKR
LENS 100 COIL

HARRIS COUNTY
FORT BEND COUNTY

HARRIS COUNTY
FORT BEND COUNTY

S. MASON RD

SEE SHEET 15 TO MATCH SURVEY STA. 78+70

SEE SHEET 17 TO MATCH SURVEY STA. 87+30