



**REVIEW BY FORT BEND COUNTY
COMMISSIONERS COURT**

**Fort Bend County
Engineering Department**
301 Jackson Suite 401
Richmond, Texas 77469
281.633.7500
Permits@fortbendcountytx.gov

Right of Way Permit
 Commercial Driveway Permit
Permit No: 2017-16027

Applicant: Mobilitie, LLC

Job Location Site: Voss Road @ Highway 6, Katy, TX 77494

Bond No. **Date of Bond:** 11/16/2016 **Amount:** \$50,000.00

The above applicant came to make use of certain Fort Bend County property subject to, "The Order Regulating the Laying, Construction, Maintenance, and Repair of Buried Cables, Conduits, and Pole Lines, In, Under, Across or Along Roads, Streets, Highways, and Drainage Ditches in Fort Bend County, Texas, Under the Jurisdiction of the Commissioners Court of Fort Bend County, Texas," as passed by the Commissioners Court of Fort Bend County, Texas, of the Minutes of the Commissioners Court of Fort Bend County, Texas, to the extent that such order is not inconsistant with Chapter 181, Vernon's Texas Statutes and Codes Annotated.

Notes:

1. Evidence of review by the Commissioners Court must be kept on the job site and failure to do so constitutes grounds for job shutdown.
2. Written notices are required:
 - a. 48 hours in advance of construction start up, and
 - b. When construction is completed and ready for final inspection, submit notification to Permit Administrator thru MyGovernmentOnline.org portal.
3. This permit expires one (1) year from date of permit if construction has not commenced.

On this 19th day of December, 2017, Upon Motion of Commissioner Meyers, seconded by Commissioner Morales, duly put and carried, it is ORDERED, ADJUDGED AND DECREED that said notice of said above purpose is hereby acknowledged by the Commissioners Court of Fort Bend County, Texas, and that said notice be placed on record according to the regulation order thereof.

Signature

Presented to Commissioners Court and approved.

By: Charles O. Ay
for County Engineer

Date Recorded 12-26-2017 Comm. Court No. 13F

By: N/A
Drainage District Engineer/Manager

Clerk of Commissioners Court
By: Arinda Wilkes
Deputy



**PERMIT APPLICATION REVIEW FORM FOR
CABLE, CONDUIT, AND POLE LINE ACTIVITY
IN FORT BEND COUNTY**

**Fort Bend County
Engineering Department**
301 Jackson Suite 401
Richmond, Texas 77469
281.633.7500
Permits@fortbendcountytx.gov

- Right of Way Permit
 Commercial Driveway Permit
Permit No: 2017-16027

The following "Notice of Proposed Cable, Conduit, and/or Pole Line activity in Fort Bend County" and accompanying attachments have been reviewed and the notice conforms to appropriate regulations set by Commissioner's Court of Fort Bend County, Texas.

(1) COMPLETE APPLICATION FORM:

- a. Name of road, street, and/or drainage ditch affected.
 b. Vicinity map showing course of directions
 c. Plans and specifications

(2) BOND:

- County Attorney, approval when applicable.
- Perpetual bond currently posted. Bond No: [REDACTED] Amount: \$50,000.00
- Performance bond submitted. Bond No: _____ Amount: _____
- Cashier's Check Check No: _____ Amount: _____

(3) DRAINAGE DISTRICT APPROVAL (WHEN APPLICABLE):

Drainage District Approval

Date

We have reviewed this project and agree it meets minimum requirements.

Chandy O. Aji

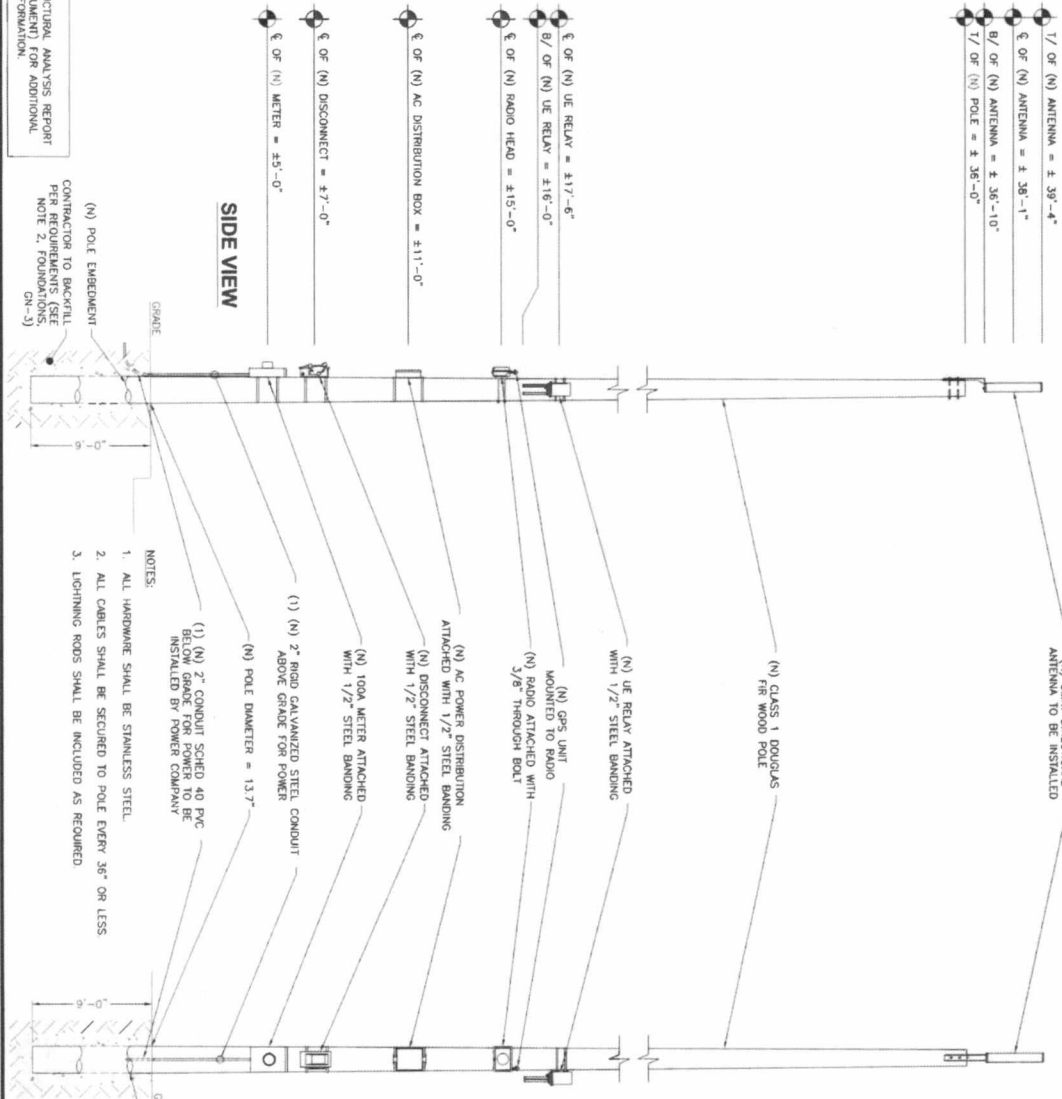
Permit Administrator

12-8-17

Date

- 1/ OF (N) ANTENNA = ± 36'-4"
- € OF (N) ANTENNA = ± 36'-1"
- B/ OF (N) ANTENNA = ± 36'-10"
- T/ OF (N) POLE = ± 36'-0"

- € OF (N) UE RELAY = ± 17'-6"
- B/ OF (N) UE RELAY = ± 16'-0"
- € OF (N) RADIO HEAD = ± 15'-0"
- € OF (N) AC DISTRIBUTION BOX = ± 11'-0"
- € OF (N) DISCONNECT = ± 7'-0"
- € OF (N) METER = ± 5'-0"



SIDE VIEW

BACK VIEW

CONTRACTOR TO BACKFILL PER REQUIREMENTS (SEE NOTE 2, FOUNDATIONS ON-3)

- NOTES:
1. ALL HARDWARE SHALL BE STAINLESS STEEL.
 2. ALL CABLES SHALL BE SECURED TO POLE EVERY 36" OR LESS.
 3. LIGHTNING RODS SHALL BE INCLUDED AS REQUIRED.

(N) POLE ELEVATIONS

SCALE: 1" = 5'

APPROVED: *[Signature]*

DATE: 12/1/17

SHEET NUMBER

EV-1

HO90XSO72C
97XB008346
VOSS RD. &
S.H. 6 (ANDRICKS-HOWELL RD.)
SODAS
UTILITY POLE



PROJECT NO: EM00216
DRAWN BY: DWS
CHECKED BY: CG

3475 PIEDMONT ROAD NE
SUITE 1000
ATLANTA, GEORGIA 30305
PHONE: (312) 638-5400

mobilitie
wireless infrastructure

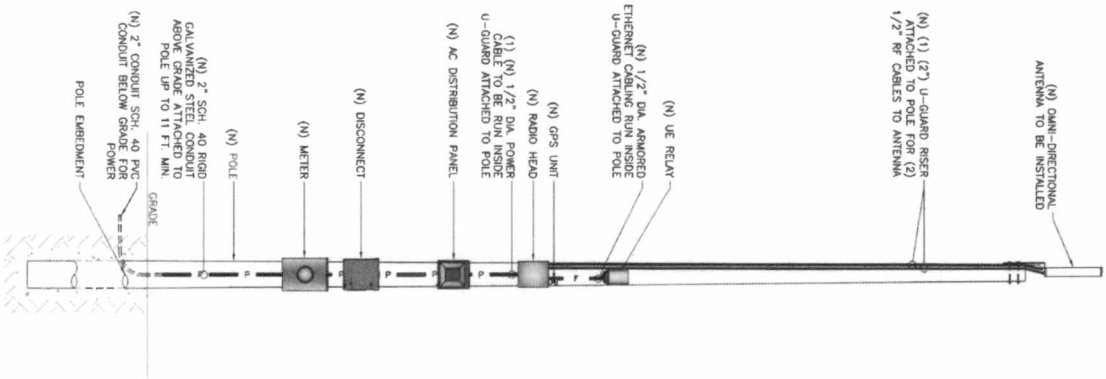
FIG. 101112

DATE: 12/1/17

1

NOTE: REFER TO STRUCTURAL ANALYSIS REPORT (SEPARATE DOCUMENT) FOR ADDITIONAL STRUCTURAL INFORMATION.

NOTE:
(C) POLE MOUNTED EQUIPMENT
NOT SHOWN FOR CLARITY.



NOTE:
THIS DIAGRAM IS FOR CLARITY OF CABLE ROUTE AND TERMINATION ONLY. CONTRACTOR SHALL INSTALL CABLES WITH MINIMAL VISUAL IMPACT ON THE SCENESHAP AND SHALL PROVIDE SHIELDING FOR EQUIPMENT AND ANTENNA LOCATIONS.

CABLING NOTES:

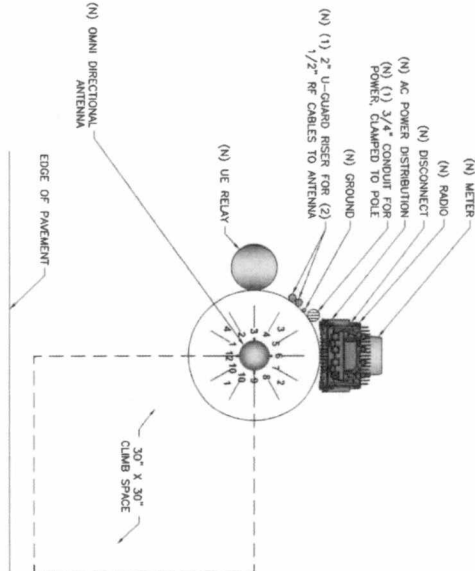
- A) WOOD, CONCRETE AND EXISTING METALLIC POLES FROM GRADE LINE TO 11'-0" ABOVE GRADE. ALL CABLES/CONDUCTORS EXCEPT GROUNDING CONDUCTOR MUST RUN IN RIBD GALVANIZED STEEL CONDUIT (RGS) IN EXPOSED LOCATIONS.
- B) GROUNDING CONDUCTORS IN EXPOSED LOCATIONS MUST BE INSTALLED IN PVC.
- C) IN EARTH INSTALL PVC CONDUIT FOR BACKHAUL AND ELECTRICAL SERVICE. TRANSMISSION TO RGS AT GRADE LINE.
- D) ABOVE 11'-0" ALL CABLES (POWER, ETHERNET, COAXIAL) MUST RUN IN PVC UTILITY POLE RISER. (1) AT MAJOR EQUIPMENT, EXTEND UTILITY DUCT IMMEDIATELY ADJACENT TO THE EQUIPMENT. INSTALL CABLES IN THE UTILITY POLES RISER CREATING BENDING RADIUS NOT LESS THAN THE CABLE BENDING RADIUS.
- E) INSIDE THE UTILITY POLE RISER, UTILIZE "W" COAX BLOCKS WITH LAG SCREWS TO SUPPORT ETHERNET CABLES TO WITHIN 12" OF THE RISER. COAX, RADIO AND MW POWER, RF COAX, AND ETHERNET CABLES TO WITHIN 12" OF THE RISER. DISCONNECT ON OPPOSITE SIDE OF POLE. DISCONNECT ON OPPOSITE SIDE OF POLE. NOT REQUIRED FOR COAX.
- F) FOR UNDERGROUND WFC/RIBD BACKHAUL, ROUTE ETHERNET CABLE CONDUIT UP THE POLE AND ENTER THE UTILITY POLE RISER SEAL EXPOSED END OF CONDUIT WITH A CABLE TERMINATION FITTING.
- G) BY APPROVAL IN SELECT CASES LIQUID-TIGHT FLEXIBLE METALLIC CONDUIT (LMC) MAY BE USED IN LENGTHS NOT TO EXCEED 36" TO EXTEND THE LENGTH OF SERVICE CONDUIT TO THE REQUIRED DISCONNECT ON POLE W/ AC DISTRIBUTION BOX ON OPPOSITE SIDE OF POLE. NOT REQUIRED FOR COAX.
- H) NEW METALLIC POLES.
- I) PRECURE NEW POLES WITH SUITABLE HAND HOLES SUCH THAT HAND HOLES EXIST AT ALL EQUIPMENT LOCATIONS.
- J) WHERE REQUIRED, INSTALL POLE BASE SUCH THAT THE ELECTRICAL FEED AND BACKHAUL (F UNDERGROUND) CIRCUIT ENTER THE POLE THROUGH THE POLE BASE.

PLUMBING DIAGRAM
SCALE: NOT TO SCALE

QTY.	DESCRIPTION	MANUFACTURER	MODEL NUMBER	AZM/LTH	CABLE	DIMENSIONS (HxWxD)	WEIGHT
1	ANTENNA	ALPHA WIRELESS	AWK477-S1	TBD	24.3	29.5" X 4.5" DIAMETER	8.8 LBS
1	UE RELAY	NOKIA/GENIEX	FTHC/473763A	TBD	3.4	24.62" X 2.87" DIAMETER	5.5 LBS
1	GPS	NOKIA	FMO/472932A	-	-	3.1" X 2.1" DIAMETER	0.3 LBS
1	RADIO	NOKIA	473603A	-	3.4	9.7" X 12.9" X 6.5"	27.2 LBS
1	AC DISTRIBUTION PANEL	RUNCAP	R5AC-3112-P-120	-	1.4	9.25" X 9.5" X 3.81"	14.1BS
1	NEW TYPE-3R DISCONNECT	SEACONS	627229R (EXAMPLE)	-	1.4	15.45" X 8.7" X 5.95"	14.1BS
1	METER SOCKET	METBANK	U4801-XL-519 (EXAMPLE)	-	TBD	19" X 13" X 4.64"	21 LBS

RFDS REVISION TYPE: NOT FINAL
RFDS REVISION NUMBER: N/A
RFDS REVISION TIMESTAMP: N/A

BILL OF MATERIALS
SCALE: NOT TO SCALE



RISER ORIENTATION DIAGRAM
SCALE: NOT TO SCALE

APPROVED: *[Signature]*
DATE: 12/11/07

mobilitie
3475 PIEDMONT ROAD NE
ALPHANTA, GEORGIA 30005
PHONE: (312) 638-5400

PROJECT NO: EMB0018
DRAWN BY: DMB
CHECKED BY: CS

NO.	REV.	DESCRIPTION	DATE
1	1	FOR REVIEW	11.11.07

MEGAN CROW
107 989
PROFESSIONAL ENGINEER
STATE OF TEXAS
REG. NO. 107989
EXPIRES 12/31/08

HOBBS/SOJZC
9780006346
5116 JARDON/HOWELL RD.
SUGAR CREEK, TX 74888

SHEET TITLE
PLUMBING & RISER DIAGRAM
SHEET NUMBER
PL-1

<p>ALPHA AW3477-S1 OMNI (B41)</p> <p>MANUFACTURER: ALPHA WIRELESS MODEL: AW3477-S1 HEIGHT: 29.5\"/> <p>SCALE: 1 N.T.S.</p> </p>	<p>NOKIA/GEMTEK UE RELAY</p> <p>MANUFACTURER: NOKIA/GEMTEK MODEL: (FOR APPROVED EQUIP.) HEIGHT: 24.82\"/> <p>SCALE: 4 N.T.S.</p> </p>	<p>APPROVED: _____ DATE: _____</p> <p>ENVIRONMENT COORDINATOR</p> <p>SCALE: 7 N.T.S.</p>	<p>RAYCAP RSTAC-3112-P-120</p> <p>MANUFACTURER: RAYCAP MODEL: RSTAC-3112-P-120 HEIGHT: 9.25\"/> <p>SCALE: 10 N.T.S.</p> </p>
<p>NOKIA RADIO 473603A</p> <p>MANUFACTURER: NOKIA MODEL: 473603A HEIGHT: 12.9\"/> <p>SCALE: 2 N.T.S.</p> </p>	<p>NOT USED</p> <p>SCALE: 5 N.T.S.</p>	<p>NOT USED</p> <p>SCALE: 8 N.T.S.</p>	<p>SIEMENS</p> <p>MANUFACTURER: SIEMENS MODEL: (FOR APPROVED EQUIP.) HEIGHT: 8.7\"/> <p>SCALE: 11 N.T.S.</p> </p>
<p>NOKIA INTERFACE STATIC</p> <p>MANUFACTURER: NOKIA MODEL: (FOR APPROVED EQUIP.) HEIGHT: 5.83\"/> <p>SCALE: 3 N.T.S.</p> </p>	<p>NOT USED</p> <p>SCALE: 6 N.T.S.</p>	<p>NOKIA GPS UNIT</p> <p>MANUFACTURER: NOKIA MODEL: (FOR APPROVED EQUIP.) HEIGHT: 3.1\"/> <p>SCALE: 9 N.T.S.</p> </p>	<p>MILBANK METER SOCKET</p> <p>MANUFACTURER: MILBANK MODEL: (FOR APPROVED EQUIP.) HEIGHT: 15\"/> <p>SCALE: 12 N.T.S.</p> </p>

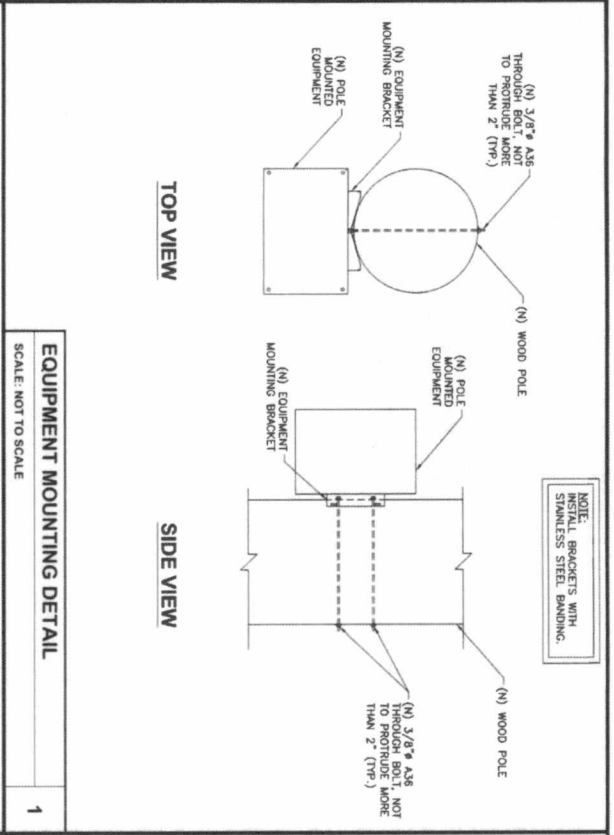
Mog...
12/1/17

PROJECT NO: E880010
DRAWN BY: DMB
CHECKED BY: DG

3475 PEDMONT ROAD NE
SUITE 1000
ATLANTA, GEORGIA 30305
PHONE: (312) 636-5400

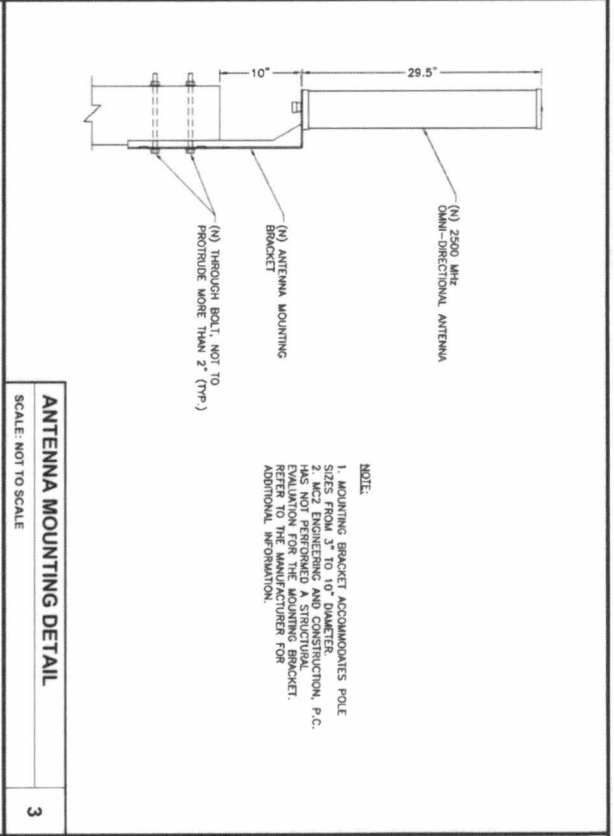
mobilitie
an harsco technology company

SHEET TITLE: EQUIPMENT DETAILS
SHEET NUMBER: EQ-1



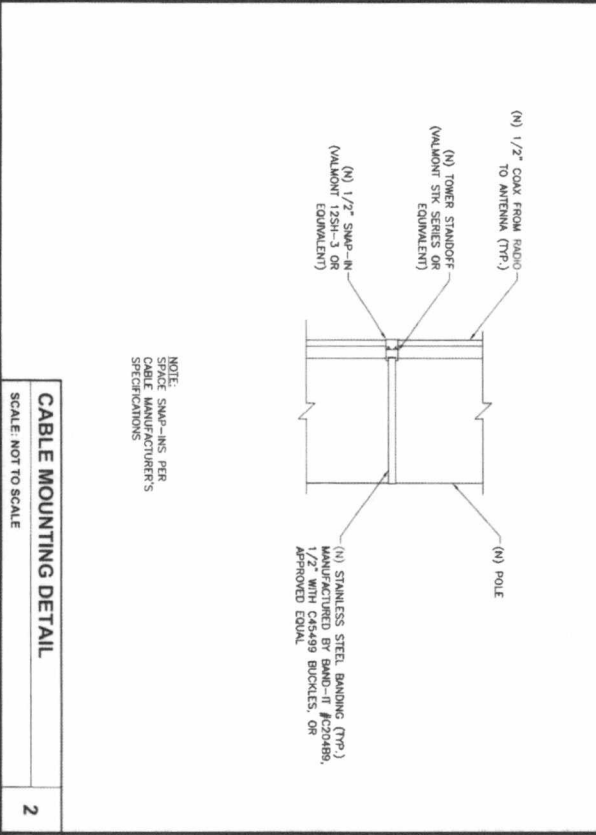
NOTE:
INSTALL BRACKETS WITH
STAINLESS STEEL BANDING.

EQUIPMENT MOUNTING DETAIL
SCALE: NOT TO SCALE



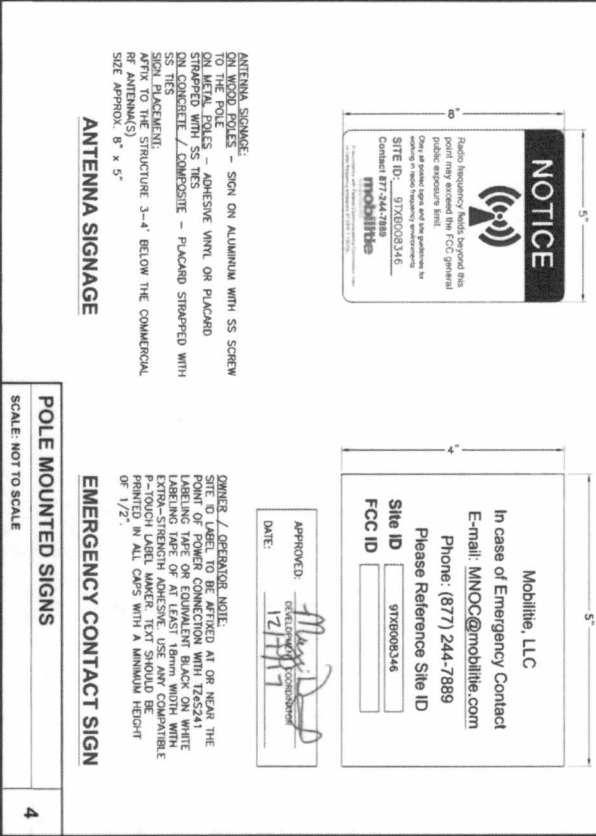
NOTE:
1. MOUNTING BRACKET ACCOMMODATES POLE SIZES FROM 3" TO 10" DIAMETER.
2. JACZ ENGINEERING AND CONSTRUCTION, P.C. EVALUATION FOR THE MOUNTING BRACKET. REFER TO THE MANUFACTURER FOR ADDITIONAL INFORMATION.

ANTENNA MOUNTING DETAIL
SCALE: NOT TO SCALE



NOTE:
SPACE SWP-4MS PER
CABLE MANUFACTURER'S
SPECIFICATIONS

CABLE MOUNTING DETAIL
SCALE: NOT TO SCALE



ANTENNA SIGNAGE:
ON WOOD POLES - SIGN ON ALUMINUM WITH SS SCREW ON METAL POLES - ADHESIVE VINYL OR PLACARD STRAPPED WITH SS TIES
ON CONCRETE / COMPOSITE - PLACARD STRAPPED WITH SS TIES
ON STEEL TOWER: STRAP TO THE STRUCTURE 3'-4" BELOW THE COMMERCIAL OR ANTENNA(S)
SIZE APPROX. 8" x 5"

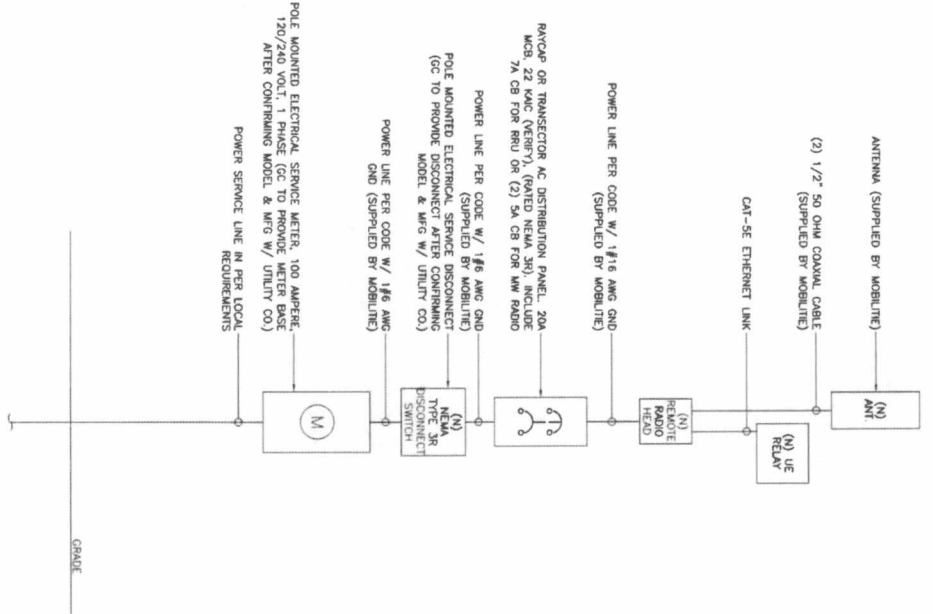
ANTENNA SIGNAGE
SCALE: NOT TO SCALE



OWNER / OPERATOR NOTE:
SITE ID LABEL TO BE AFFIXED AT OR NEAR THE POINT OF POWER CONNECTION WITH TAPS241 LABELING TAPE OR EQUIVALENT BLACK ON WHITE EXTRA-STRENGTH ADHESIVE. USE ANY COMPATIBLE P-TOUCH LABEL MAKER. TEXT SHOULD BE PRINTED IN ALL CAPS WITH A MINIMUM HEIGHT OF 1/2".

POLE MOUNTED SIGNS
SCALE: NOT TO SCALE

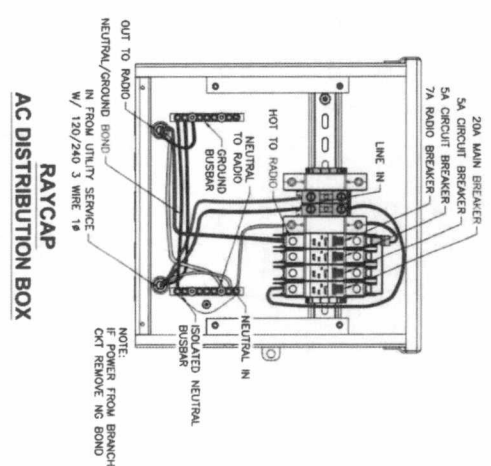
<p>PROJECT NO: ER00216 DRAWN BY: DMB CHECKED BY: CG</p>	<p>3475 PIEDMONT ROAD NE SUITE 1000 ATLANTA, GEORGIA 30305 PHONE: (312) 638-5400</p>	<p>antennas & infrastructure mobilite</p>
<p>11/11/17 FOR REVIEW</p>	<p>MEGAN L. CHOW 107989 PROFESSIONAL ENGINEER</p>	<p>SHEET TITLE EQUIPMENT DETAILS</p>
<p>ME L. CHOW, P.E. REGISTERED PROFESSIONAL ENGINEER EXERCISE NO. 107989 EXPIRES 12/31/2018</p>	<p>HOBONSQ72C 97XB008346 VOSS RD & S.H. 6 (MADDOCKS HOWELL RD.) SUGAR LAND, TX 77498 UTILITY POLE</p>	<p>SHEET NUMBER EQ-2</p>



ELECTRICAL ONE-LINE DIAGRAM

1

SCALE: NOT TO SCALE



BREAKER SCHEDULE

2

SCALE: NOT TO SCALE

- NOTES:**
1. NOMINAL POWER IS CALCULATED AS BOX OF OEM DOCUMENTED MAXIMUM POWER.
 2. CALCULATIONS FOR UE W/ NEMA DO NOT NEED TO INCLUDE THE POWER FOR THE UE ANTENNA AS IT IS INCLUDED IN THE MAX POWER.
 3. KW IS CALCULATED FROM THE CONSUMPTION VALUE ASSUMING A PF=1. MAXIMUM POWER WAS USED FOR KW, WHERE MAXIMUM POWER WAS NOTED BY THE OEM THE QUOTED FIGURE WAS USED. WHERE AVERAGE/NOMINAL POWER WAS NOTED BY THE OEM MAXIMUM POWER WAS CALCULATED BY INCREASING AVERAGE/NOMINAL POWER BY A FACTOR OF 50%.

Nokia Scenario 2 B26 Radio and Nokia UE Backhaul

Unit	Sub Description	Max Power (W)	Max Current (A)	KVA	kWh/yr
NSN - B26 High-PWR/CD/FWZ/CL	TE Base Station	360	4.00	0.36	3153.6
Nokia Genetk	UE Relay	N/A	N/A	N/A	N/A
Total		360	4.00	0.36	3153.6

LOAD CALCULATIONS

3

SCALE: NOT TO SCALE

APPROVED: *[Signature]*
DATE: 12/11/17

mobilitie
integrated infrastructure

3475 PEDMONT ROAD NE
SUITE 1000
ATLANTA, GEORGIA 30305
PHONE: (312) 638-5400

PROJECT NO: E8800218
DRAWN BY: DWB
CHECKED BY: CG

NO.	REV.
1	1/11/17

IF A MEMBER OF THE LINE FOR ANY REASON, THE LICENSEE SHALL BE SUBJECT TO THE DISCIPLINARY ACTION OF THE BOARD OF PROFESSIONAL ENGINEERS.

107989

PROFESSIONAL ENGINEER

STATE OF GEORGIA

REGISTERED PROFESSIONAL ENGINEER

107989

12/11/17

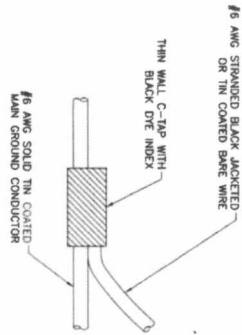
HOBXXXXC7ZC
97XBD08346
VOSS RD. &
SUGARTLAND, TX 77488
UTILITY POLE

S.H. & J. DODDICKS HOWELL (RD.)
SUGARTLAND, TX 77488
UTILITY POLE

ELECTRICAL DETAILS

SHEET NUMBER
E-1

NOTE:
CONDUCTOR TO SURROUND COMPLETED CONNECTION WITH HEAT-SHRINK TUBING TO ENSURE WEATHER PROOF CONNECTION.



C-TAP DETAIL

SCALE: NOT TO SCALE

1

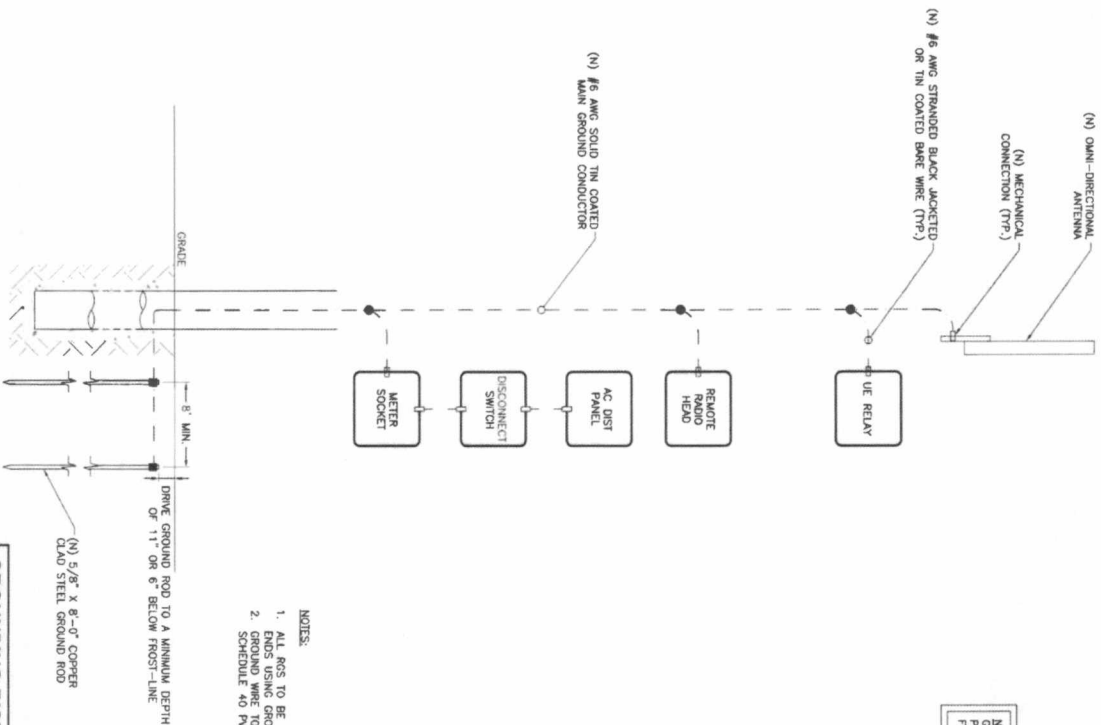


NOTE:
ERGO EXOTHERMIC "MOLD TYPES" SHOWN HERE ARE EXAMPLES. CONSULT WITH PROJECT MANAGER FOR SPECIFIC MOLDS TO BE USED FOR THIS PROJECT.

WELD CONNECTION DETAILS

SCALE: NOT TO SCALE

2



- NOTES:
1. ALL RGS TO BE GROUNDED AT BOTH ENDS USING GROUNDING BUSHINGS
 2. GROUND WIRE TO BE RUN IN 1/2" SCHEDULE 40 PVC.

- LEGEND
- COLDWELD CONNECTION
 - MECHANICAL CONNECTION
 - COMPRESSION CONNECTION

NOTE:
GROUNDING RISER FOR DIAGRAMATIC PURPOSES ONLY. SEE ELEVATION DRAWINGS FOR EQUIPMENT AND ANTENNA LOCATIONS.

GROUNDING RISER DIAGRAM

SCALE: NOT TO SCALE

3

mobilitie
 3475 PEMBERTON ROAD NE
 SUITE 1000
 ATLANTA, GEORGIA 30305
 PHONE: (312) 638-5400

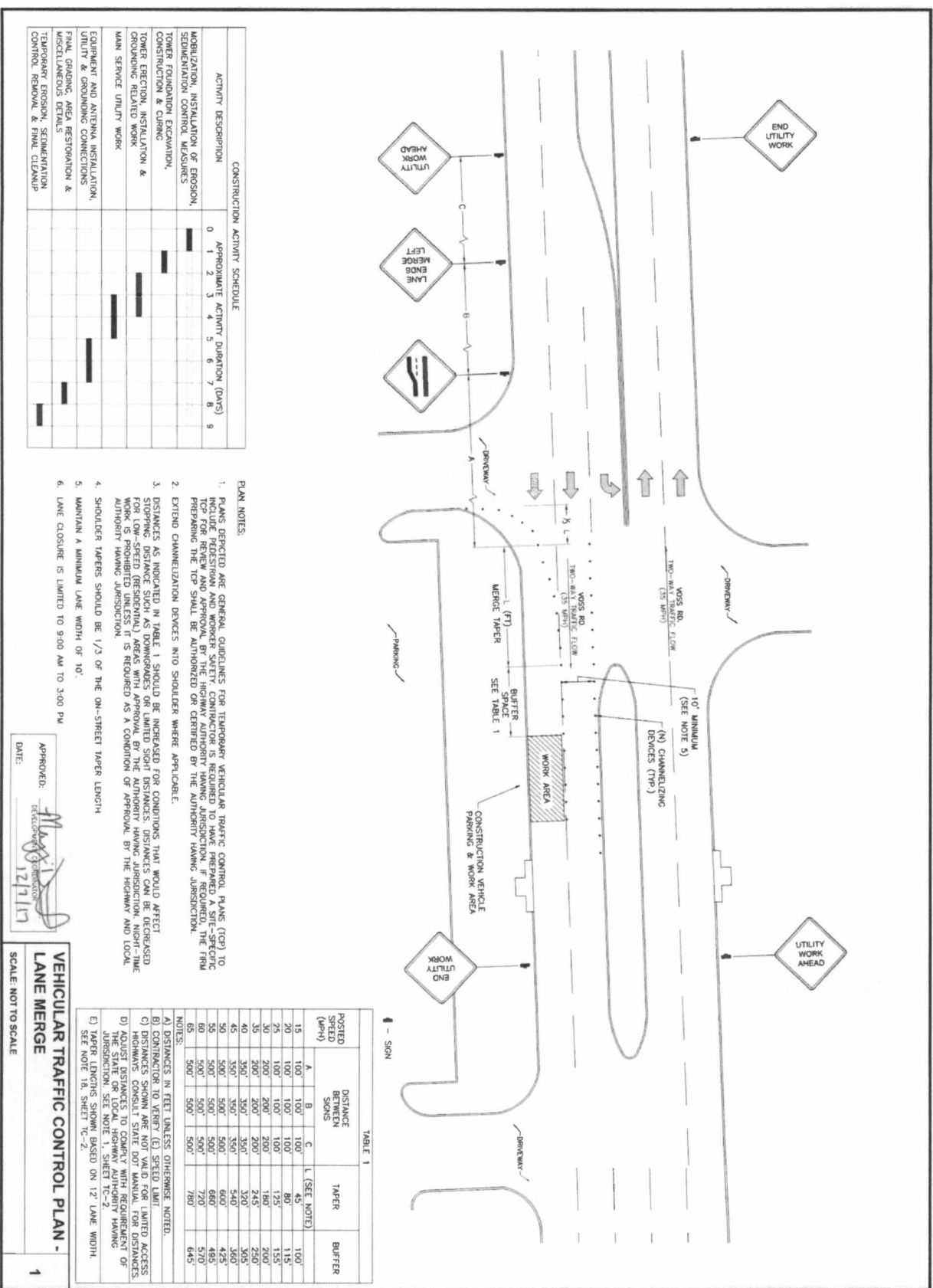
PROJECT NO.:	EM00210
DRAWN BY:	DWB
CHECKED BY:	CS

NO.	REVISION	DATE

THIS IS A VALIDATION OF THE LICENSE FOR THE REGISTERED PROFESSIONAL ENGINEER IN THE STATE OF GEORGIA. THE LICENSE NUMBER IS 107989. THE LICENSEE'S NAME IS MICHAEL L. VOSSE. THE LICENSEE'S ADDRESS IS 8100 WOODLAND DRIVE, SUITE 1000, ATLANTA, GA 30328. THE LICENSEE'S PHONE NUMBER IS 404-251-1234. THE LICENSEE'S FAX NUMBER IS 404-251-1234. THE LICENSEE'S EMAIL ADDRESS IS M.VOSSE@EXAMPLE.COM. THE LICENSEE'S BOARD OF ENGINEERING AND SURVEYING IS THE BOARD OF ENGINEERING AND SURVEYING OF THE STATE OF GEORGIA. THE LICENSEE'S BOARD OF ENGINEERING AND SURVEYING IS THE BOARD OF ENGINEERING AND SURVEYING OF THE STATE OF GEORGIA. THE LICENSEE'S BOARD OF ENGINEERING AND SURVEYING IS THE BOARD OF ENGINEERING AND SURVEYING OF THE STATE OF GEORGIA.

HO909X5Q72C
 97X6006346
 S.H. & J. ADAMS (HOWELL RD.)
 SUITE 1000
 UTILITY POLE

SHEET TITLE
GROUNDING DETAILS
 SHEET NUMBER
G-1



CONSTRUCTION ACTIVITY SCHEDULE

ACTIVITY DESCRIPTION	0	1	2	3	4	5	6	7	8	9
MOBILIZATION, INSTALLATION OF EROSION, SEDIMENTATION CONTROL MEASURES										
TONER FOUNDATION EXCAVATION, CONSTRUCTION & CURING										
TONER REGRADING, INSTALLATION & GROUNDING RELATED WORK										
MAIN SERVICE UTILITY WORK										
EQUIPMENT AND ANTENNA INSTALLATION, UTILITY & SHROUDING CONNECTIONS										
FINAL GRADING, AREA RESTORATION & MISCELLANEOUS DETAILS										
TEMPORARY EROSION, SEDIMENTATION CONTROL, REMOVAL & FINAL CLEANUP										

- PLAN NOTES:
- PLANS DEPICTED ARE GENERAL GUIDELINES FOR TEMPORARY VEHICULAR TRAFFIC CONTROL PLANS (TCP) TO INCLUDE PEDESTRIAN AND WORKER SAFETY. CONTRACTOR IS REQUIRED TO HAVE PREPARED A SITE-SPECIFIC PROTECTION THE TCP SHALL BE AUTHORIZED OR DETERMINED BY THE AUTHORITY HAVING JURISDICTION.
 - EXTENDED CHANNELIZATION DEVICES INTO SHOULDER WHERE APPLICABLE.
 - DISTANCES AS INDICATED IN TABLE 1 SHOULD BE INCREASED FOR CONDITIONS THAT WOULD AFFECT STOPPING DISTANCE SUCH AS DOWNHILL SLOPES OR LIMITED VISIBILITY. DISTANCES CAN BE DECREASED FOR LOW-SPEED (RESIDENTIAL) AREAS WITH APPROVAL BY THE AUTHORITY HAVING JURISDICTION. NIGHT-TIME WORK IS PROHIBITED UNLESS IT IS REQUIRED AS A CONDITION OF APPROVAL BY THE HIGHWAY AND LOCAL AUTHORITY HAVING JURISDICTION.
 - SHOULDER TAPERS SHOULD BE 1/3 OF THE ON-STREET TAPER LENGTH.
 - MAINTAIN A MINIMUM LANE WIDTH OF 10'.
 - LANE CLOSURE IS LIMITED TO 9:00 AM TO 3:00 PM.

APPROVED: 
 DATE: 12/11/17

VEHICULAR TRAFFIC CONTROL PLAN -
 LANE MERGE
 SCALE: NOT TO SCALE
 1

TABLE 1

POSTED SPEED (MPH)	A	B	C	L (SEE NOTE)	TAPER	BUFFER
15	100	100	100	45'	80'	100'
20	100	100	100	80'	125'	115'
25	100	100	100	125'	155'	150'
30	200	200	200	180'	200'	200'
35	200	200	200	210'	230'	230'
40	300'	300'	300'	240'	260'	260'
45	300'	300'	300'	270'	290'	290'
50	500'	500'	500'	300'	320'	320'
55	500'	500'	500'	330'	350'	350'
60	500'	500'	500'	360'	380'	380'
65	500'	500'	500'	390'	410'	410'

NOTES:
 A) DISTANCES IN FEET UNLESS OTHERWISE NOTED.
 B) DISTANCES TO VEHICLE END SPEED LIMIT.
 C) DISTANCES TO POINT OF ENTRY TO LIMITED ACCESS.
 D) ADJUST DISTANCES TO COMPLY WITH REQUIREMENT OF THE STATE OR LOCAL HIGHWAY AUTHORITY HAVING JURISDICTION. SEE NOTE 1, SHEET TC-2.
 E) TAPER LENGTHS SHOWN BASED ON 12' LANE WIDTH. SEE NOTE 1B, SHEET TC-2.

PROJECT NO: E8800216
 DRAWN BY: DMB
 CHECKED BY: CG



MEGAN L. CROW
 LICENSE NO. 107989
 PROFESSIONAL ENGINEER

3475 PIEDMONT ROAD NE
 SUITE 1000
 ATLANTA, GEORGIA 30305
 PHONE: (312) 638-5400

mobilitte
 intelligent infrastructure

HO80XSQ72C
 817XB08346
 VOSS RD. &
 S.H. 6 (ADOCKS HOWELL RD.)
 SUGAR LAND, TX 77488
 UTILITY POLE

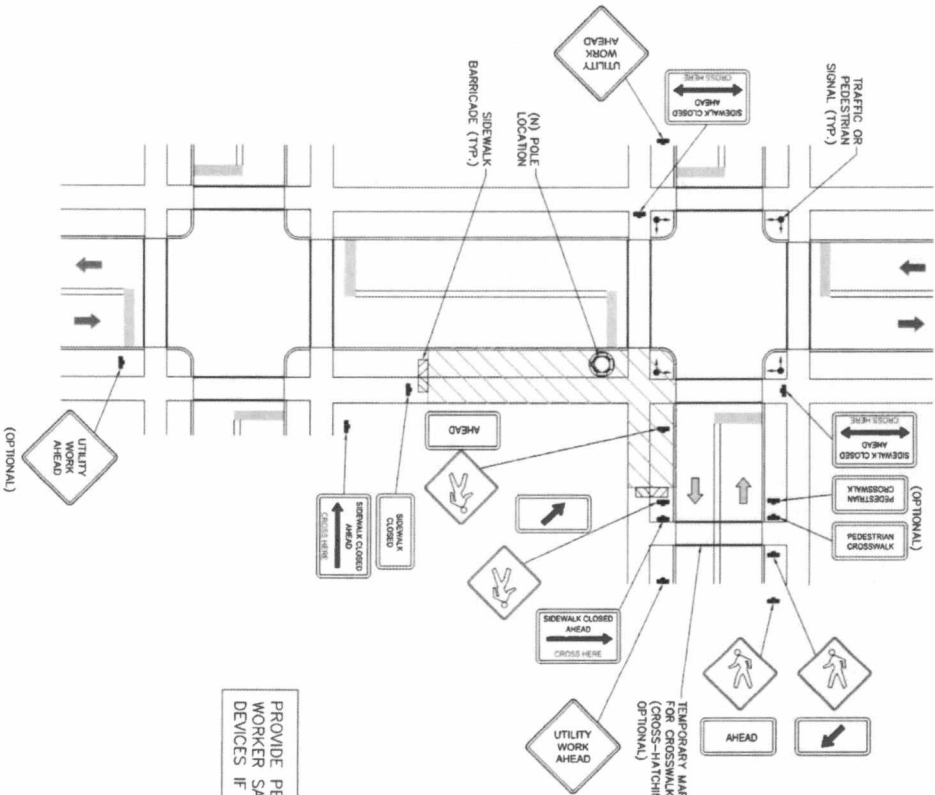
SHEET TITLE
 VEHICULAR TRAFFIC
 CONTROL PLAN

SHEET NUMBER
 TC-1

DATE: 12/11/17

TRAFFIC CONTROL GENERAL NOTES

1. ALL TEMPORARY TRAFFIC CONTROL SIGNAGE, LAYOUTS AND PLACEMENTS SHALL COMPLY WITH ALL APPLICABLE JURISDICTIONAL REQUIREMENTS AND MANUAL OF UNIFORM TRAFFIC CONTROL DEVICES (MUTCD), LATEST EDITION, WHICHEVER IS MORE STRINGENT.
2. PRIOR TO ANY ROAD CONSTRUCTION, TRAFFIC CONTROL SIGNS AND DEVICES SHALL BE IN PLACE.
3. TRAFFIC CONTROL DEVICES FOR LANE CLOSURES INCLUDING SIGNS, CONES, BARRICADES, AND BARRIERS SHALL BE PLACED AS SHOWN ON THESE PLANS AND SHALL BE IMMEDIATELY REMOVED UPON REMOVAL OF THE CLOSURES.
4. SELECTION, PLACEMENT, MAINTENANCE, AND PROTECTION OF TRAFFIC, PEDESTRIANS, AND WORKERS SHALL BE IN ACCORDANCE WITH THE MANUAL OF UNIFORM TRAFFIC CONTROL DEVICES (MUTCD) - PART VI "TEMPORARY TRAFFIC CONTROL," AND LOCAL JURISDICTIONAL REQUIREMENTS UNLESS OTHERWISE NOTED IN THE PLANS AND SPECIFICATIONS. ALL SIGNAGE SHALL BE PLACED BY THE APPROPRIATE HIGHWAY AUTHORITY HAVING JURISDICTION.
5. ADVANCE WARNING SIGNS, DISTANCES, AND TAPER LENGTHS MAY BE EXCEEDED TO MAINTAIN THE FLOW OF TRAFFIC AND TO MAINTAIN TRAFFIC SPEEDS IF IN EXCESS OF POSTED SPEED LIMITS.
6. TAPERS SHALL BE LOCATED TO MAXIMIZE THE VISIBILITY OF THEIR TOTAL LENGTH.
7. CONFLICTING OR NON-OPERATING SIGNAL INDICATIONS ON THE (E) TRAFFIC SIGNAL SYSTEMS SHALL BE BAGGED OR COVERED.
8. ALL (E) ROAD SIGNS, PAVEMENT MARKINGS AND/OR FLOWABLE PAVEMENT REFLECTORS WHICH CONFLICT WITH THE (N) TRAFFIC CONTROL PLAN SHALL BE COVERED, REMOVED, OR RELOCATED. ALL SIGNAGE SHALL BE PLACED IN ACCORDANCE WITH THE MUTCD PRE-CONSTRUCTION CONDITION AFTER COMPLETION OF WORK.
9. CONTRACTOR SHALL CONTACT LOCAL AUTHORITY HAVING HIGHWAY SUPERVISION, IF REQUIRED.
10. ALL EXCAVATED AREAS WITHIN OR ADJACENT TO THE ROADWAY SHALL BE PROTECTED AND BARRICADED WITH A BARRIER PRIOR TO END OF EACH WORK DAY. OTHER EXCAVATED AREAS WITHIN THE CLEAR ZONE ARE TO BE EITHER BACKFILLED OR PRECAST CONCRETE CURB BARRIER CONSTRUCTION BARRIER SET PERMANENTLY IN PLACE TO SHIELD VEHICLES AND PEDESTRIAN TRAFFIC.
11. WHERE DICTATED BY LOCAL CONDITIONS, THE CONTRACTOR SHALL PROVIDE SIGNAGE AND TAPERS IN ACCORDANCE WITH ALL APPLICABLE JURISDICTIONAL REQUIREMENTS.
12. CONSTRUCTION ZONE SPEED LIMIT IF REDUCED FROM POSTED LIMITS SHALL BE IN ACCORDANCE WITH MUTCD AND WILL BE DETERMINED BY THE AUTHORITY HAVING JURISDICTION.
13. THERE SHALL BE NO WORKERS, EQUIPMENT, OR OTHER VEHICLES IN THE BUFFER SPACE OR THE ROLL AHEAD SPACE.
14. DRIVEWAYS AND/OR SIDE STREETS ENTERING THE ROADWAY AFTER THE FIRST ADVANCE WARNING SIGN SHALL BE PROVIDED WITH AT LEAST ONE W20-1 SIGN (ROAD WORK AHEAD) AS A MINIMUM.
15. CONES MAY BE SUBSTITUTED FOR DRUMS AND INSTALLED UPON THE APPROVAL OF THE AUTHORITY HAVING JURISDICTION PROVIDED THEY COMPLY WITH MUTCD.
16. THE SPACING BETWEEN CONES, TUBULAR MARKERS, VERTICAL PANELS, DRUMS, AND BARRICADES SHOULD NOT EXCEED A DISTANCE IN FEET EQUAL TO 1.0 TIMES THE SPEED LIMIT IN MPH WHEN USED FOR TAPER CHANNELIZATION, AND A DISTANCE IN FEET EQUAL TO 2.0 TIMES THE SPEED LIMIT IN MPH WHEN USED FOR TANGENT CHANNELIZATION.
17. WHEN CHANNELIZATION DEVICES HAVE THE POTENTIAL OF LEADING VEHICLES INTO EXCAVATED AREAS, THE SPACING BETWEEN CHANNELIZATION DEVICES SHOULD BE EXTENDED A DISTANCE IN FEET OF 2.0 TIMES THE SPEED LIMIT IN MPH BEYOND THE DOWNSTREAM END OF THE TRANSITION AREA. TAPER LENGTHS ARE CALCULATED AS FOLLOWS:
L = WS/60 (40 MPH AND HIGHER) OR L2 = WS (OVER 40 MPH),
WHERE W= OFFSET WIDTH (FT), S= TRAFFIC SPEED (MPH).



TYPICAL PEDESTRIAN / WORKER SAFETY PLAN
SCALE: NOT TO SCALE

APPROVED: *[Signature]*
DATE: 12/17/17

<p>1</p>	<p>TYPICAL PEDESTRIAN / WORKER SAFETY PLAN</p>	<p>1</p>	
<p>HOBOXSD72C 9178X08346 S.H. 6 (ADDIKS HOWELL RD.) SUGAR LAND, TX 77498 UTILITY POLE</p>	<p>SHEET TITLE PEDESTRIAN SAFETY PLAN</p>	<p>SHEET NUMBER TC-2</p>	<p>PROJECT NO: EMB02219 DRAWN BY: DMB CHECKED BY: CG</p> <p>PRODUCT NO: 111012</p> <p>3475 PIEDMONT ROAD NE SUITE 1000 ATLANTA, GEORGIA 30305 PHONE: (312) 638-5400</p> <p>mobilitie Independent Contractor</p>


ELECTRICAL NOTES CONTD.

13. THE CONNECTION OF ANY DEVICES SHALL BE COMPLETED BY THE CONTRACTOR WITHOUT ANY ADDITIONAL CHARGE AND SHALL INCLUDE THE REPLACEMENT OR THE REPAIR OF ANY OTHER PHASE OF THE INSTALLATION, WHICH MAY HAVE BEEN DAMAGED THEREIN.
14. CONTRACTOR SHALL PROVIDE AND INSTALL CONDUIT CONDUITORS, SHALL WIRES, BOXES, COVER PLATES AND DEVICES FOR ALL OUTLETS AS INDICATED.
15. BUSHING AND BACK-FILL: CONTRACTOR SHALL PREPARE FOR ALL UNDERGROUND AND ABOVE-GROUND CONDUITS INCLUDING CONDUIT AND BACKFILLING AND COMPACTION REFER TO NOTES AND REQUIREMENTS EXCAVATION, AND BACKFILLING.
16. MATERIALS, PRODUCTS AND EQUIPMENT, INCLUDING ALL COMPONENTS THEREOF, SHALL BE NEW AND SHALL APPEAR ON THE LIST OF TUL APPROVED ITEMS AND SHALL MEET OR EXCEED THE REQUIREMENTS OF THE NEC, NEMA AND IEC.
17. CONTRACTOR SHALL SUBMIT SHOP DRAWINGS OR MANUFACTURER'S CATALOG INFORMATION OF ANY/ALL EQUIPMENT AND ALL OTHER ELECTRICAL ITEMS FOR APPROVAL BY THE MOBILE/CM PRIOR TO INSTALLATION.
18. ANY CUTTING OR PATCHING DEEMED NECESSARY FOR ELECTRICAL WORK IS THE ELECTRICAL CONTRACTOR'S RESPONSIBILITY AND SHALL BE INCLUDED IN THE COST FOR WORK AND REFERENCED TO THE SATISFACTION OF THE MOBILE/CM UPON FINAL ACCEPTANCE.
19. THE ELECTRICAL CONTRACTOR SHALL LABEL ALL PANELS WITH ONLY THE INFORMATION NECESSARY TO IDENTIFY THE EQUIPMENT AND SHALL BE THE RESPONSIBILITY OF THE ELECTRICAL CONTRACTOR.
20. DISCONNECT SWITCHES SHALL BE UL-RATED, H.P. RATED HEAVY-DUTY, QUICK-MAKE AND QUICK-BREAK ENCLOSURES, AS REQUIRED BY EXPOSURE TYPE.
21. ALL CONNECTIONS SHALL BE MADE WITH A PROTECTIVE COATING OF AN ELECTRICAL CONDUITING KIND AS THE ORDER OF THE ELECTRICAL CONTRACTOR. COAT ALL WIRE SURFACES BEFORE CONNECTING, EXPOSED COPPER SURFACES, INCLUDING GROUND BARS, SHALL BE TREATED - NO SUBSTITUTIONS.
22. RACEWAYS: CONTRACTOR SHALL BE SCHEDULE 80 PVC MEETING OR EXCEEDING NEMA ITC-2 - 1980. CONTRACTOR SHALL PULL AND CAP EACH END OF SPARE AND EMPTY CONDUITS AND PROVIDE TWO SEPARATE PULL STRINGS - 200 LBS TEST STRENGTH, 1/2" DIA. GALVANIZED STEEL RODS CONDUITS WHEN SPECIFIED, SHALL MEET UL-6 FOR GALVANIZED STEEL. ALL FITTINGS SHALL BE SUITABLE FOR USE WITH THREADED RIGID CONDUIT COAT ALL THREADS WITH "BRITE ZINC" OR "COLD GALV."
23. SUPPORT OF ALL ELECTRICAL WORK SHALL BE AS REQUIRED BY NEC.
24. CONDUCTORS: CONTRACTOR SHALL USE 98% CONDUCTIVITY COPPER WITH TYPE THHN INSULATION, UNLESS OTHERWISE NOTED, 600 VOLT, COLOR CODED, USE SOLID CONDUCTORS FOR WIRE UP TO AND INCLUDING NO. 8 AWG; USE STRANDED CONDUCTORS FOR WIRE ABOVE NO. 8 AWG.
25. CONNECTORS FOR POWER CONDUCTORS: CONTRACTOR SHALL USE PRESSURE SOLDERLESS MECHANICAL TERMINAL LUGS FOR NO. 8 AWG AND LARGER.
26. SERVICE: AS SPECIFIED ON THE DRAWINGS, OWNER OR OWNER'S AGENT WILL APPLY FOR POWER. ALL PROVISIONS FOR TEMPORARY POWER WILL BE OBTAINED BY THE CONTRACTOR.
27. TELEPHONE OR FIBER SERVICE: CONTRACTOR SHALL PROVIDE EMPTY CONDUITS WITH PULL STRINGS AS INDICATED ON DRAWINGS.
28. ELECTRICAL AND TELCO/FIBER RACEWAYS TO BE BURIED A MINIMUM DEPTH OF 30", UNLESS OTHERWISE NOTED.
29. CONTRACTOR SHALL PLACE 6" WIDE DETECTABLE WARNING TAPE AT A DEPTH OF 6" BELOW GROUND AND DIRECTLY ABOVE ELECTRICAL AND TELCO SERVICE CONDUITS. CAUTION TAPE TO READ "CAUTION BURIED ELECTRIC" OR "BURIED TELCO".
30. ALL BOLTS SHALL BE 3-16 STAINLESS STEEL.

GROUNDING NOTES:

1. ALL WAREHOUSES SHALL BE 3-16 STAINLESS STEEL, INCLUDING LOCK WASHERS, COAT ALL SURFACES WITH AN ANTI-OXIDANT COMPOUND, AS SPECIFIED, BEFORE FINISHING. ALL HARDWARE SHALL BE STAINLESS STEEL 3/8" INCH DIAMETER OR SIZED TO MATCH COMPONENTS OR LOG SIZE.
2. FOR GROUND BOND TO STEEL ONLY, INSERT A CADMIUM FLAT WASHER BETWEEN LUG AND STEEL. COAT ALL SURFACES WITH AN ANTI-OXIDANT COMPOUND BEFORE FINISHING.
3. ALL STEEL CONDUIT SHALL BE BONDED AT BOTH ENDS WITH GROUNDING BUSHING.
4. ALL ELECTRICAL AND GROUNDING AT THE POLE SITE SHALL COMPLY WITH THE NATIONAL ELECTRICAL CODE (NEC), NATIONAL FIRE PROTECTION ASSOCIATION (NFPA) 700 (LATEST EDITION), AND MANUFACTURER'S.
5. ALL DETAILS ARE SHOWN IN GENERAL TERMS. ACTUAL GROUNDING INSTALLATION AND CONSTRUCTION MAY VARY DUE TO SITE SPECIFIC CONDITIONS.
6. GROUND ALL ANTENNA BASES, FRAMES, CABLE RINGS, AND OTHER METALLIC COMPONENTS USING #6 GROUND RODS, SOLID COPPER RODS AND B7S MANUFACTURER'S PRACTICES FOR GROUNDING REQUIREMENTS.
7. ALL GROUND CONNECTIONS SHALL BE #6 AWG, UNLESS OTHERWISE NOTED, USE COPPER BARE (NO JACKET) WIRES ON WOOD POLES. BLACK WIRES WILL USE A SINGLE STRIPE OF GREEN ELECTRICAL TAPE WITHIN 12" OF THE CONNECTION POINTS TO IDENTIFY AS GROUNDING WIRE.
8. NOTIFY ARCHITECT/ENGINEER IF THERE ARE ANY DIFFICULTIES INSTALLING GROUNDING SYSTEM DUE TO SITE SOIL CONDITIONS.
9. ALL HORIZONTALLY RUN GROUNDING CONDUCTORS SHALL BE INSTALLED A MINIMUM OF 30" BELOW GRADE/6" BELOW FROST-LINE IN TRENCH, UNLESS OTHERWISE NOTED. BACK FILL SHALL BE COMPACTED AS REQUIRED BY ARCHITECT/ENGINEER.
10. ALL GROUND CONDUCTORS SHALL BE RUN AS STRAIGHT AND SHORT AS POSSIBLE, WITH A MINIMUM 12" BENDING RADIUS NOT LESS THAN 90 DEGREES.
11. ACCEPTABLE CONNECTIONS FOR GROUNDING SYSTEM SHALL BE:
 - A. BIRDY-HY-GRADE UL LISTED CONNECTORS FOR OUTDOOR USE OR AS APPROVED BY APPLICANT PROJECT MANAGER.
 - B. CAPPED, EXOTHERMIC WELDS (WELDED CONNECTIONS).
 - C. ONE (1) OR (2) HOLDS THINDED COPPER COMPRESSION (LONG BARREL) FITTINGS.
12. ALL GAPPED CONNECTIONS SHALL HAVE EXPOSED MANUFACTURER'S MARK AND WEATHER-PROOFED WITH HEAT SHRINK.
13. ALL CONNECTION HARDWARE SHALL BE TYPE 3-16 STAINLESS STEEL (NOT ATTRACTED TO MAGNETS).
14. ELECTRICAL SERVICE EQUIPMENT GROUNDING SHALL COMPLY WITH NEC, ARTICLE 250-82 AND SHALL BOND ALL (E) AND NEW GROUNDING ELECTRODES, NEW GROUNDING ELECTRODE SHALL INCLUDE BUT NOT LIMITED TO GROUND RODS.

3. CONTRACTOR TO VERIFY AND RECORD ALL TEST RESULTS AND PROVIDE THESE RESULTS WITHIN THE FINAL CLOSE-OUT PACKAGE.
 4. ALL PERSONNEL INVOLVED IN THE TESTING OF RF CABLE, DATA CABLE, RADIO EQUIPMENT AND BACK HALL EQUIPMENT WILL BE REQUIRED TO HAVE BEEN TRAINED AND OR CERTIFIED IN THE PROPER TESTING OF RF CABLE, DATA CABLE, RADIO EQUIPMENT AND BACK HALL EQUIPMENT.
 5. ALL TEST RESULTS SHALL BE TIME STAMPED, RECORDED AND PRESENTED PRIOR TO ENERGIZING AND TURN UP OF ANY EQUIPMENT.
 6. GFS EQUIPMENT (WHEN REQUIRED) IS NOT TO BE TESTED OR ATTACHED TO ANY CABLING DURING TESTING, DOING SO WILL DAMAGE THE GFS UNIT.
 7. PRIOR TO TESTING IF THE CONTRACTOR HAS ANY QUESTIONS ABOUT THE TESTING PROCEDURES THEY ARE TO CALL AND OBTAIN ASSISTANCE FROM A QUALIFIED DESIGNATED TESTING REPRESENTATIVE.
 8. EQUIPMENT IS NOT TO BE ENERGIZED UNTIL ALL TESTING HAS BEEN COMPLETED, APPROVED AND THE APPROPRIATE AUTHORITY HAS BEEN NOTIFIED AND GIVEN APPROVAL TO ENERGIZE THE EQUIPMENT.
- SITE WORK NOTES:**
1. DO NOT EXCAVATE OR DISTURB BEYOND THE PROPERTY LINES OR LEASE LINES, UNLESS OTHERWISE NOTED.
 2. SIZE, LOCATION AND TYPE OF ANY UNDERGROUND UTILITIES OR IMPROVEMENTS SHALL BE ACCURATELY NOTED AND PLACED ON AS-BUILT DRAWINGS BY THE CONTRACTOR AND ISSUED TO ARCHITECT/ENGINEER AT COMPLETION OF PROJECT.
 3. ALL (E) UTILITIES, FACILITIES, CONDITIONS AND THEIR DIMENSIONS SHOWN ON PLANS HAVE BEEN PLOTTED FROM AVAILABLE RECORDS. CONTRACTOR, ENGINEER OR OWNER ASSUME NO RESPONSIBILITY WHATSOEVER AS TO THE ACCURACY OR ADEQUACY OF THE INFORMATION SHOWN ON THE PLANS OR THE MANNER OF THEIR REMOVAL OR ADJUSTMENT. CONTRACTOR SHALL BE RESPONSIBLE FOR THE START OF CONSTRUCTION. CONTRACTOR SHALL ALSO OBTAIN FROM EACH UTILITY COMPANY DETAILED INFORMATION RELATIVE TO WORKING SCHEDULES AND METHODS OF REMOVING OR ADJUSTING (E) UTILITIES.
 4. CONTRACTOR SHALL VERIFY ALL (E) UTILITIES BOTH HORIZONTALLY AND VERTICALLY PRIOR TO START OF CONSTRUCTION. ANY DISCREPANCIES OR OMISSIONS AS TO THE INTERPRETATION OF PLANS SHALL BE IMMEDIATELY REPORTED TO THE ARCHITECT/ENGINEER. NO FURTHER WORK SHALL BE PERFORMED UNTIL THE DISCREPANCY IS CHECKED AND CORRECTED BY THE ARCHITECT/ENGINEER. FAILURE TO SECURE SUCH INFORMATION MEANS CONTRACTOR WILL HAVE WORKED AT HIS OWN RISK AND EXPENSE. CONTRACTOR SHALL CALL LOCAL UTILITY LOCATIONS AND VERIFY THE LOCATION OF UTILITIES PRIOR TO START OF CONSTRUCTION.
 5. ALL NEW AND (E) UTILITY STRUCTURES ON SITE AND IN AREAS TO BE DISTURBED BY CONSTRUCTION SHALL BE ADJUSTED TO FINISH ELEVATIONS PRIOR TO FINAL INSPECTION OF WORK, ANY COST RELATED TO ADJUSTING (E) STRUCTURES SHALL BE BORNE SOLELY BY THE CONTRACTOR.
 6. GRADING OF THE SITE WORK AREA IS TO BE SMOOTH AND CONTINUOUS IN SLOPE AND IS TO FEATHER INTO (E) GRADES AT THE GRADING LIMITS.
 7. ALL TEMPORARY EXCAVATIONS FOR THE INSTALLATION OF FOUNDATIONS, UTILITIES, ETC., SHALL BE PROPERLY LAID BACK OR BRACED IN ACCORDANCE WITH CORRECT OCCUPATIONAL SAFETY AND HEALTH ADMINISTRATION (OSHA) REQUIREMENTS.

APPROVED: 
 DATE: 12/19/17

mobilitie
 3475 PIEDMONT ROAD NE
 SUITE 1000
 ATLANTA, GEORGIA 30305
 PHONE: (312) 658-5400

PROJECT NO: EMB0218
 DRAWN BY: OMB
 CHECKED BY: CG

A 11/13/17
 FOR REVIEW

STATE OF ALABAMA
 PROFESSIONAL ENGINEER
 LICENSE NO. 107989
 REGAN CHOI
 12/19/17

HOBOX/SQZC
 917XB008346
 VOSS RD &
 S.H. & DORIS HOWELL (RD.)
 SHELBY COUNTY, TN 37089
 UTILITY POLE

SHEET TITLE
 GENERAL NOTES
 SHEET NUMBER
 GN-2

FORT BEND COUNTY - CONSTRUCTION - GENERAL NOTES

1. FORT BEND COUNTY MUST BE INVITED TO THE PRE-CONSTRUCTION MEETING.
2. CONTRACTOR SHALL NOTIFY FORT BEND COUNTY ENGINEERING DEPARTMENT 48 HOURS PRIOR TO COMMENCING CONSTRUCTION AND 48 HOUR NOTICE TO ANY CONSTRUCTION OFFICER (FORTBENDCOUNTY.TX.GOV)
3. CONTRACTOR IS RESPONSIBLE FOR OBTAINING ALL PERMITS REQUIRED FROM FORT BEND COUNTY PRIOR TO COMMENCING CONSTRUCTION OF ANY IMPROVEMENTS WITHIN COUNTY ROAD RIGHT OF WAY.
4. ALL PAVING IMPROVEMENTS SHALL BE CONSTRUCTED IN ACCORDANCE WITH FORT BEND COUNTY RULES, REGULATIONS AND REQUIREMENTS RELATING TO THE IMPROVEMENTS AND ACCEPTANCE OF IMPROVEMENTS IN SUBDIVISIONS AS CURRENTLY AMENDED.
5. ALL ROAD WIDTHS, CURB RADI AND CURB ALIGNMENT SHOWN INDICATES BACK OF CURB.
6. A CONTINUOUS LONGITUDINAL REINFORCING BAR SHALL BE USED IN THE CURBS.
7. ALL CONCRETE PAVEMENT SHALL BE 5 1/2" SLAB, GEBENT WITH A MINIMUM COMPRESSIVE STRENGTH OF 3000 P.S.I. AT 28 DAYS. TRANSVERSE EXPANSION JOINTS SHALL BE INSTALLED AT EACH CURB RETURN AND AT A MAXIMUM SPACING OF 60 FEET.
8. ALL WEATHER ACCESS TO ALL EXISTING STREETS AND DRIVEWAYS SHALL BE MAINTAINED AT ALL TIMES.
9. 4" X 12" REINFORCED CONCRETE CURB SHALL BE PLACED IN FRONT OF SINGLE FAMILY LOTS ONLY. ALL OTHER AREAS SHALL BE 6" REINFORCED CONCRETE CURB.
10. AT ALL INTERSECTION LOCATIONS, TYPE 7 RAMPS SHALL BE PLACED IN ACCORDANCE WITH TBOOT FED-12A STANDARD DETAIL SHEET, A.D.A. -- INTERSECTIONS SHALL BE INSTALLED WITH STREET RAMP AND ALL INTERSECTIONS AND CURB WITH CURRENT A.D.A. REGULATIONS.
11. CURB HEADERS ARE REQUIRED AT CURB CONNECTIONS TO HANDICAP RAMPS, WITH NO CONSTRUCTION JOINT WITHIN 5' OF RAMPS.
12. ALL INTERSECTIONS UTILIZING TRAFFIC CONTROL MEASURES SHALL HAVE A.D.A. WHEEL CHAIR RAMPS INSTALLED.
13. CHAIRS ARE SET FORTH IN THE TEXAS MANUAL ON UNIFORM TRAFFIC CONTROL DEVICES. AS CURRENTLY AMENDED, SHALL BE OBSERVED. THE CONTRACTOR SHALL BE RESPONSIBLE FOR PROVIDING ADEQUATE FLAGMEN, SIGNING, STRIPING AND WARNING DEVICES, ETC., DURING CONSTRUCTION -- BOTH DAY AND NIGHT.
14. ALL R-1 STOP SIGNS SHALL BE 30" X 30" WITH DIAMOND GRADE SHEETING PER TEXAS MANUAL ON UNIFORM TRAFFIC CONTROL DEVICES.
15. STREET NAME SIGNAGE SHALL BE ON A 6" HIGH SIGN FLAT BLADE, REFLECTIVE GREEN BACKGROUND. STREET NAMES SHALL BE UPPER AND LOWERCASE LETTERING WITH UPPERCASE LETTERS OF 6" MINIMUM AND LOWERCASE LETTERS OF 4.5" MINIMUM. THE LETTERS SHALL BE REFLECTIVE WHITE. STREET NAME SIGNS SHALL BE MOUNTED ON STOP SIGN POST.
16. A BLUE DOUBLE REFLECTORIZED BUTTON SHALL BE PLACED AT ALL FIRE HYDRANT LOCATIONS. THE BUTTON SHALL BE PLACED 12 INCHES OFF OF THE CENTERLINE OF THE STREET ON THE SAME SIDE AS THE HYDRANT.
17. THE PROJECT AND ALL PARTS THEREOF SHALL BE SUBJECT TO INSPECTION FROM TIME TO TIME BY INSPECTORS DESIGNATED BY FORT BEND COUNTY. NO SUCH INSPECTORS SHALL RELIEVE THE CONTRACTOR OF ANY OF ITS OBLIGATIONS. THE CONTRACTOR SHALL BE RESPONSIBLE FOR NOTIFYING THE INSPECTORS OF ANY OF THE WORK AS NOT IN ACCORDANCE WITH THE DRAWINGS AND REFLECT SPECIFICATIONS, REQUIREMENTS AND SPECIFICATIONS OF FORT BEND COUNTY OR ANY PROVISION OF THIS PROJECT SHALL BE CONSIDERED TO IMPLY AN ACCEPTANCE OF THE WORK OR TO RELIEVE THE CONTRACTOR OF ANY OF ITS OBLIGATIONS HEREUNDER.

NOTE: FORT BEND COUNTY NOTES SUPERSEDE ANY CONFLICTING NOTES

APPROVED: 
 DATE: 12/1/17



3475 PEMONT ROAD NE
 SUITE 1000
 ATLANTA, GEORGIA 30305
 PHONE: (312) 638-5400

PROJECT NO.: E060219
 DRAWN BY: DWS
 CHECKED BY: CB

NO.	DESCRIPTION	DATE
1	11/1/17	ISSUANCE

MEGAN L. CHOW
 107989
 PROFESSIONAL ENGINEER



HO090XS072C
 97X909346
 VOSS RD. &
 SUGAR LAND, TX 77498
 UTILITY POLE

SHEET TITLE
 GENERAL NOTES

SHEET NUMBER
 GN-4