

**ExxonMobil Pipeline Company**

22777 Springwoods Village Pkwy  
EMHC/E3.5A.418  
Spring, Texas 77389  
Telephone - (281) 922-2024

**Christopher Hinson**

Manager, ROW & Claims



November 16, 2017

**Right-of-Way Consent Agreement**

RE: FM 1093 WESTPARK EXTENSION PHASE II-A over KATY GAS PLANT - DAMON JUNCTION TX-216

Fort Bend County Engineering  
301 Jackson Street  
Richmond, TX 77469

Gentlemen:

H-2017.058

ExxonMobil Pipeline Company (EMPCo) has reviewed proposed plans to construct a roadway and underground drainage structures over and across its pipeline easement giving a minimum 4 feet of separation between the drainage system and the EMPCo pipeline at approximately 5,137 feet East of Katy-Fulshear Rd.; 29°37'44.58"N,95°19'27.60"W. As you are aware, EMPCo owns and/or operates petroleum, petroleum products and chemicals pipelines that must be protected from external damage and maintained in accordance with EMPCo, State and Federal standards to protect the safety of the public and the environment. In order to do this, EMPCo has developed certain terms and conditions that must be agreed to by anyone intending to construct facilities on or within our rights of way. EMPCo consents to the roadway and underground drainage structures over and across its pipeline easement giving a minimum 4 feet of separation between the drainage system and the EMPCo pipeline at approximately 5,137 feet East of Katy-Fulshear Rd.; 29°37'44.58"N,95°19'27.60"W (the "Improvements") as shown in the drawings submitted by Dannenbaum Engineering (Project No. CC-543-2-63), provided Fort Bend County agrees to the following terms and conditions:

1. Fort Bend County and its contractors agree to conduct all activities and operations on, in, over, under, through or near EMPCo's easement in a manner that will not unreasonably interfere with EMPCo's operation or maintenance of its pipelines in the easement or pose a hazard to the pipelines. Fort Bend County recognizes its use of the easement area will always be subject to the prior rights of EMPCo to utilize any and all portions of its easement, in any manner that it deems necessary. Any change or deviation in the proposed design, layout or construction of the Improvements, which affects EMPCo's easement, excluding changes required by EMPCo, shall first be reviewed and consented to by EMPCo before any work or activity shall take place on, in, over, under or through the easement. Failure to do so voids this consent. No improvements, except for those shown on the plans, may be placed on, in, under, over, or through the easement, without express written consent from EMPCo.
2. Fort Bend County or its contractors will contact EMPCo's Javier Robles, at 281-705-6106, a minimum of 72 hours prior to performing any activity within the easement.
3. Excavating or digging within the easement is prohibited without prior consent and an EMPCo inspector on site.
4. In the event EMPCo shall excavate its pipelines for any reason, or should additional pipelines be installed within the easement, Fort Bend County and its successors and assigns will, at its sole expense be responsible for repairing damage to the Improvements resulting therefrom. Further, EMPCo shall not be held liable for any business interruption, business loss, loss of revenue or income, that may result due to the operation, maintenance, repair, replacement, installation, or any pipeline related work within EMPCo's pipeline easement.

FormROWConsent2013Rev1

12-14-2017 Original sent to Britten Harris, Engineering dept.

5. Fort Bend County shall be liable for damages to EMPCo's pipelines resulting from or occurring out of the construction, maintenance and repair of the Improvements.
6. TO THE EXTENT ALLOWED BY LAW, FORT BEND COUNTY SHALL INDEMNIFY, DEFEND, RELEASE AND HOLD EMPCO (INCLUDING ITS AFFILIATES, CONTRACTORS, SUBCONTRACTORS, DIRECTORS, OFFICERS, EMPLOYEES, SUCCESSORS, AND ASSIGNS) HARMLESS FROM AND AGAINST ALL CLAIMS, LOSSES, DEMANDS, CAUSES OF ACTION, SUITS, AND LIABILITY OF EVERY KIND, TYPE, AND CHARACTER ARISING OUT OF OR ASSOCIATED WITH THE CONSTRUCTION, EXISTENCE, MAINTENANCE, REPAIR AND REMOVAL OF THE IMPROVEMENTS, WHICH ARE ASSERTED BY ANY PERSON OR ENTITY INCLUDING, WITHOUT LIMITATION, EMPCO'S AND FORT BEND COUNTY'S EMPLOYEES FOR PERSONAL INJURY, DEATH, OR LOSS OF OR DAMAGE TO PROPERTY.
7. Because the improvement to be placed in EMPCo's easement by Fort Bend County will obstruct EMPCo's access to its pipelines and impede its use of the easement Fort Bend County agrees to reimburse EMPCo for maintenance/construction expenses which exceed normal/customary expenses directly incurred as a result of the improvement being placed in the easement. EMPCo agrees to review maintenance/construction plans with Fort Bend County and to subsequently provide invoices documenting the additional expenses incurred.
8. Fort Bend County agrees that the terms, conditions and obligations of this letter agreement shall be made known to all successors, assigns or transferees of any interest in the property covered by this agreement. All successors, assigns or transferees of any interest in the subject property shall be bound by the terms, conditions and obligations contained herein.
9. Fort Bend County agrees to those pertinent terms and conditions outlined in the attached form, titled "ExxonMobil Pipeline Company Right-of-Way Restrictions", attached hereto and made a part hereof.

Fort Bend County agrees that EMPCo's consent is adequate consideration for Fort Bend County's obligations hereunder. The consent provided by EMPCo in this letter shall not be deemed to be an approval of the manner in which Fort Bend County performs the work described herein. Please indicate Fort Bend County's acceptance of the foregoing terms and conditions by signing this letter in the space provided below and returning one original to me at the above letterhead address.

Very truly yours,

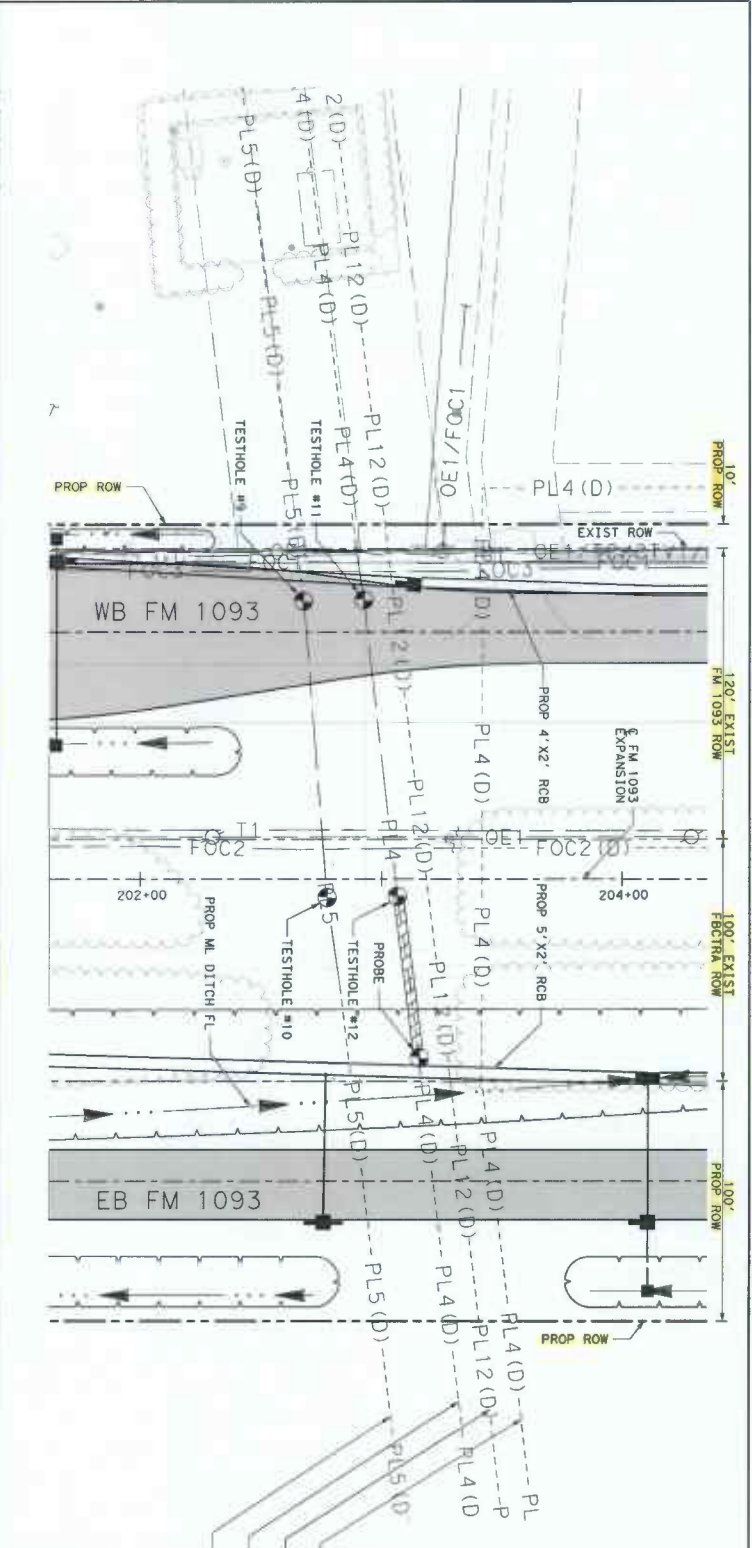
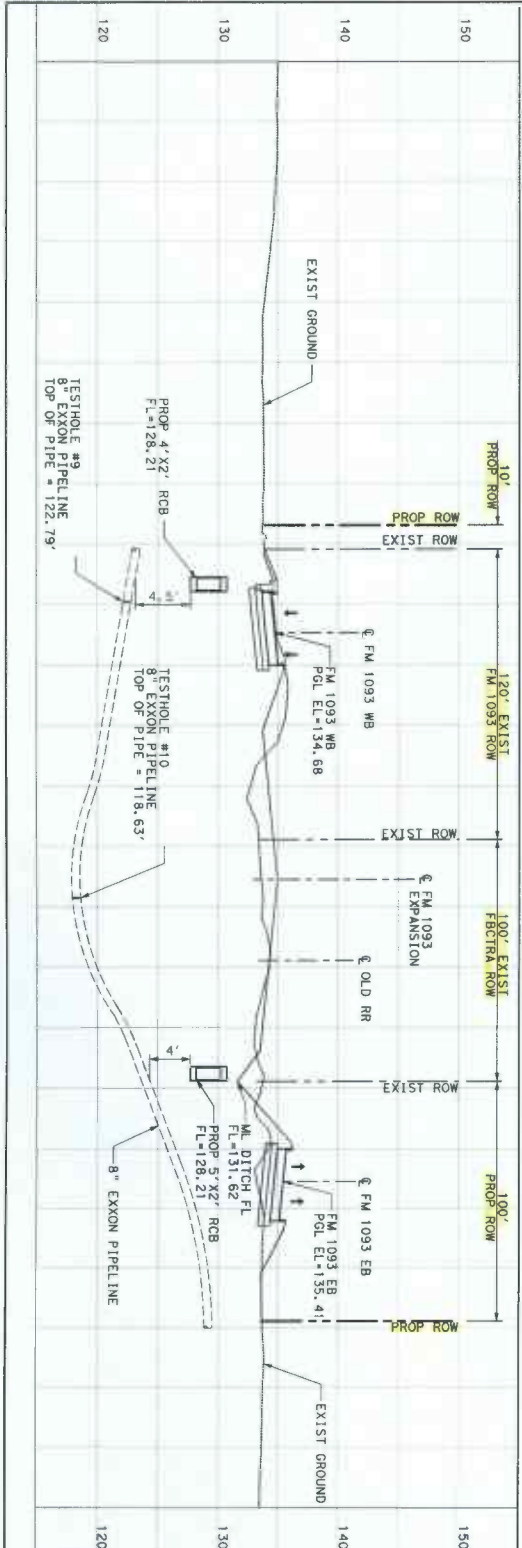
Christopher Hinson  
Manager, Right-of-Way and Claims

AGREED TO AND ACCEPTED THIS 12 DAY OF December, 2017.

Fort Bend County

By: 

Title: Robert E. Hebert,  
County Judge



REV	DATE	BY	DESCRIPTION

SCALE: 1"=50'

1"=5' - V

PROPOSED FRONTAGE ROAD

36" ENTERPRISE C116 PIPELINE

30" ENTERPRISE S15 PIPELINE

30" ENTERPRISE S1 PIPELINE

8" EXXON PIPELINE

**DANNENBAUM**  
ENGINEERING CORPORATION

3180 WEST ALABAMA, HOUSTON, TX 77056 (713) 860-8810

FM 1093 WESTPARK EXTENSION  
UTILITY EXHIBIT  
8" EXXON PIPELINE  
STA 202+77

SHEET 3 OF 9

DESIGNED BY: JR    DRAWN BY: JJ  
 CHECKED BY: MJK    CHECKED BY: MM  
 COUNTY:    JOB:    HWY NO.:    SHEET NO.:  
 FORT BEND 05431 02 1063.ETC\FM 1093

PROJECT NO.: CC 543-2-63, ETC  
CSJ: 0543-02-063, ETC  
FORT BEND COUNTY

FM 1093 WESTPARK EXTENSION PHASE II

VOLUME 2 OF 2: SHEET 1002-1533  
MARCH 2017



SHEET NO.	DESCRIPTION	SHEET NO.
1325	BOX CULVERTS PRECAST MISCELLANEOUS DETAILS SCP-MD	1427
1326	SINGLE BOX CULVERTS PRECAST 3'-0" SPAN SCP-3	1428-1430
1327	SINGLE BOX CULVERTS PRECAST 4'-0" SPAN SCP-4	1431-1443
1328	SINGLE BOX CULVERTS PRECAST 5'-0" SPAN SCP-5	1444
1329	SINGLE BOX CULVERTS PRECAST 6'-0" SPAN SCP-6	1445-1459
1330	SINGLE BOX CULVERTS PRECAST 8'-0" SPAN SCP-8	
1331	MULTIPLE BOX CULVERTS CAST-IN-PLACE MISCELLANEOUS DETAILS-MC-MD	
1332-1333	MULTIPLE BOX CULVERTS CAST-IN-PLACE MISCELLANEOUS DETAILS-MC-MD	
1334	EXTENDING CURB DETAILS- EDO	
1335	CURB INLET TYPE C1- HIL-C (HOUSTON DISTRICT)	
1336	CURB INLET TYPE C1- HIL-LCI (HOUSTON DISTRICT)	
1337	MANHOLE TYPE A & B- HIL-AD/AD (HOUSTON DISTRICT)	
1338	MANHOLE TYPE M (MDD) (JUNCTION BOX WITH ACCESS) 15" MAX FILL	
1339	MISCELLANEOUS SEWER DETAILS MSD (HOUSTON DISTRICT)	
1340	CUTTER DEPRESSION DETAILS FOR CURB INLETS: CD (HOUSTON DISTRICT)	
1341	SAFETY END TREATMENT FOR (12" DIA TO 12'-1 DIA PIPE CULVERTS) TYPE 11	
1342	PARALLEL DRAINAGE SEP-PD	
1343-1344	SAFETY END TREATMENT TYPE 11 CROSS DRAINAGE (12" TO 60") SEP-CO	
1345	PRECAST SAFETY END TREATMENT TYPE 11-CROSS DRAINAGE PSET-SC	
1346	PRECAST SAFETY END TREATMENT TYPE 11-CROSS DRAINAGE PSET-SP	
1347-1348	SAFETY END TREATMENT FOR BOX CULVERTS (MAXIMUM HW=7'-0") SEP-PD	
1349	CONCRETE WINGWALLS WITH FLARED WINGS FOR SKIN BOX CULVERTS- FW-0	
1350	CONCRETE WINGWALLS WITH FLARED WINGS FOR SKIN BOX CULVERTS- FW-5	
1351-1352	HCDF INTERCEPTOR STRUCTURE DETAILS: HCDF-150 (1) (HOUSTON DISTRICT)	
1353-1355	SOIL BORING SITE PLAN	
1356-1368	HYDRAULIC DATA SHEET - MBFR OVER FLEWELLEN CREEK	
1370	TYPICAL SECTION - MBFR OVER FLEWELLEN CREEK	
1372	ESTIMATED QUANTITIES & BEARING SEAT ELEVATIONS MBFR OVER FLEWELLEN CREEK	
1373	FOUNDATION LAYOUT - MBFR OVER FLEWELLEN CREEK	
1374	ADJUTMENT NO 1 - MBFR OVER FLEWELLEN CREEK	
1375	ADJUTMENT NO 2 - MBFR OVER FLEWELLEN CREEK	
1376	ADJUTMENT MUSIC DETAILS MBFR OVER FLEWELLEN CREEK	
1377	ADJUTMENT MUSIC DETAILS MBFR OVER FLEWELLEN CREEK	
1378	MBFR FLEWELLEN CREEK BRIDGE SLAB DETAILS	
1379	HYDRAULIC DATA SHEET - EBRF OVER FLEWELLEN CREEK	
1380	BRIDGE LAYOUT - EBRF OVER FLEWELLEN CREEK	
1381	TYPICAL SECTION - EBRF OVER FLEWELLEN CREEK	
1382	ESTIMATED QUANTITIES & BEARING SEAT ELEVATIONS EBRF OVER FLEWELLEN CREEK	
1383	FOUNDATION LAYOUT - EBRF OVER FLEWELLEN CREEK	
1384	ADJUTMENT NO 1 - EBRF OVER FLEWELLEN CREEK	
1385	ADJUTMENT NO 2 - EBRF OVER FLEWELLEN CREEK	
1386	ADJUTMENT MUSIC DETAILS EBRF OVER FLEWELLEN CREEK	
1387	BRIDGE FRAMING PLAN - EBRF OVER FLEWELLEN CREEK	
1388	EBRF FLEWELLEN CREEK BRIDGE SLAB DETAILS	
1389	EBRF FLEWELLEN CREEK BRIDGE SLAB DETAILS	
1390	EBRF FLEWELLEN CREEK BRIDGE SLAB DETAILS	

SHEET NO.	DESCRIPTION	SHEET NO.
1427	EXISTING TRAFFIC SIGNAL LAYOUT - FM 1093 AT CROSS CREEK RANCH BLVD	1481
1428-1430	TRAFFIC SIGNAL LAYOUT - FM 1093 AT CROSS CREEK RANCH BLVD	1482
1431-1443	SIGNING LAYOUT	1483
1444	SMALL SIGN DETAILS	1484
1445-1459	PAVEMENT MARKING LAYOUT	1485
		1486
		1487
		1488
		1489
		1490
		1491
		1492
		1493-1495
		1496-1500
		1501
		1502
		1503
		1504
		1505
		1506

**TRAFFIC STANDARDS**

- 1460 ELECTRICAL DETAILS - CONDUIT ED(11)-14
- 1461 ELECTRICAL DETAILS - CONDUIT SUPPORTS ED(21)-14
- 1462 ELECTRICAL DETAILS - CONDUITS ED(3)-14
- 1463 ELECTRICAL DETAILS - GROUND BOXES-TYPE TP
- 1464 ELECTRICAL DETAILS - SERVICE NOTES & DATA ED(5)-14
- 1465 ELECTRICAL DETAILS - SERVICE RACKS/SHEDS ED(6)-14
- 1466 ELECTRICAL DETAILS - SERVICE SUPPORT TYPES SE-SP ED(7)-14
- 1467 ELECTRICAL DETAILS - ELECTRICAL SERVICE SUPPORT GENERAL SERVICE TYPE PS ED(9)-14
- 1468 ELECTRICAL DETAILS - SERVICE SUPPORT TYPES CC, CC, & TP ED(10)-14
- 1469 MOWING PAD DETAILS FOR ELECTRICAL SERVICES
- 1470 LONG MAST ARM ASSEMBLY (50 FT TO 65 FT) (60 AND 100 MPH WIND ZONE) LMA(1) THRU 4)-12
- 1471 LONG MAST ARM ASSEMBLY PARTS LIST LMA(5)-12
- 1472 STANDARD ASSEMBLY DRAWINGS FOR LIGHTNING SUPPORT STRUCTURES LMA-A-12
- 1473 STANDARD ASSEMBLY FOR TRAFFIC SIGNAL SUPPORT STRUCTURES - MAST ARM CONNECTIONS MA-C-12
- 1474 TRAFFIC SIGNAL SUPPORT STRUCTURES - MAST ARM POLE DETAILS MA-D-12
- 1475 MAST ARM DAMPING PLATE DETAILS MA-PO-12
- 1476 SIGNAL DETAILS/STANDARDS - CONTROLLER FOUNDATION DETAIL SD/SCFD CONSTRUCTION DETAILS FOR POLE MOUNTED (ARPS) REDUNDANT SIGNALS CD/PA(4)SP(S)
- 1477 SIGNAL DETAILS/STANDARDS - OVERHEAD STREET NAME SIGN MOUNTING DETAILS SIGNAL DETAILS/STANDARDS - VIVOS CAMERA MOUNTING DETAILS VC/MD CONSTRUCTION DETAILS FOR TRAFFIC SIGNALS (WOOD POLE) GD/15/MF SIGNAL DETAILS/STANDARDS - SHIELD SPECIFIC RADIO ANTENNA MOUNTING DETAILS SIGNAL - SHIELD SPAN WIRE MOUNT DETAILS SIG-W/MO SIGNAL DETAILS /STANDARDS - LOOP DETECTOR DETAILS LDDP SIGNAL DETAILS /STANDARD - LOOP DETECTOR DETAILS LDDP SIGNAL DETAILS /STANDARDS - LOOP DETECTOR DETAILS LDDP (SIDE MOUNT) BBU
- 1478 TRAFFIC SIGNAL WORK TYPICAL DETAILS WZ(B)-11-13
- 1479 TRAFFIC SIGNAL WORK BARRICADES AND SIGNS WZ(B)-21-13
- 1480 DELINEATOR & OBJECT MARKER MATERIAL DESCRIPTION D & OM (1)-15
- 1481 SIGN MOUNTING DETAILS SMALL ROADSIDE SIGNS GENERAL NOTES & DETAILS SMD (GEN)-08
- 1482 SIGN MOUNTING DETAILS SMALL ROADSIDE SIGNS TRIANGULAR SLIPBASE SYSTEM SMD(SLIP)-1 THRU 3)-08
- 1483 TYPICAL SIGN REQUIREMENTS TRN(11)-13 THRU TRS(15)-13
- 1484 REGULATORY SIGNS (LANE USE CONTROL) RUC(1)-12
- 1485 TYPICAL STANDARD PAVEMENT MARKINGS PM(1)-12
- 1486 POSITION GUIDANCE USING RAISED MARKERS REFLECTORIZED PROFILE MARKINGS PM(Z)-12
- 1487 PAVEMENT MARKINGS FOR TWO-WAY LEFT TURN LANES DIVIDED HIGHWAYS AND OVERHEAD SIGN MOUNTING SYSTEMS PM(D)-12
- 1488 PAVEMENT MARKINGS (DOTTED EXTENSION DETAILS): PM(D)-11 (HOUSTON DISTRICT) PAVEMENT MARKINGS (CONTRAST LANE LINES): PM(D)-14 (HOUSTON DISTRICT)

**ENVIRONMENTAL ISSUES**

- 1507 TxDOT STORM WATER POLLUTION PREVENTION PLAN SWP3
- 1508 SWP3 LAYOUTS
- 1509 ENVIRONMENTAL PERMITS ISSUES AND COMMITMENTS (EPIC)
- 1510 ENVIRONMENTAL DATA SHEETS

**ENVIRONMENTAL STANDARDS**

- 1511 TEMPORARY EROSION, SEDIMENT AND WATER POLLUTION CONTROL MEASURES FENCE & VERTICAL TRACKING EC(11)-16
- 1512 TEMPORARY EROSION, SEDIMENT AND WATER POLLUTION CONTROL MEASURES ROCK FILTER DAMS EC (2)-16
- 1513 TEMPORARY EROSION, SEDIMENT AND WATER POLLUTION CONTROL MEASURES CONSTRUCTION EXITS EC (3)-16
- 1514 EROSION CONTROL - LOSS ECL-12 (HOUSTON DISTRICT)

REV	DATE	BY	DESCRIPTION

**DANNENBAUM**  
ENGINEERING CORPORATION  
3144 West Alameda Houston, TX 77025-8648  
PH: 281.463.1000 FAX: 281.463.1001

**INDEX OF SHEETS**

SHEET 2 OF 2

DESIGNED BY: JR      DRAWN BY: JJ  
CHECKED BY: MJM      CHECKED BY: MJM  
COMMIT: CONT      SEC: JOB      HWY. NO.:      SHEET NO.:  
FOOT BRD: 0543      02      053      ETC: FM 1093      1003

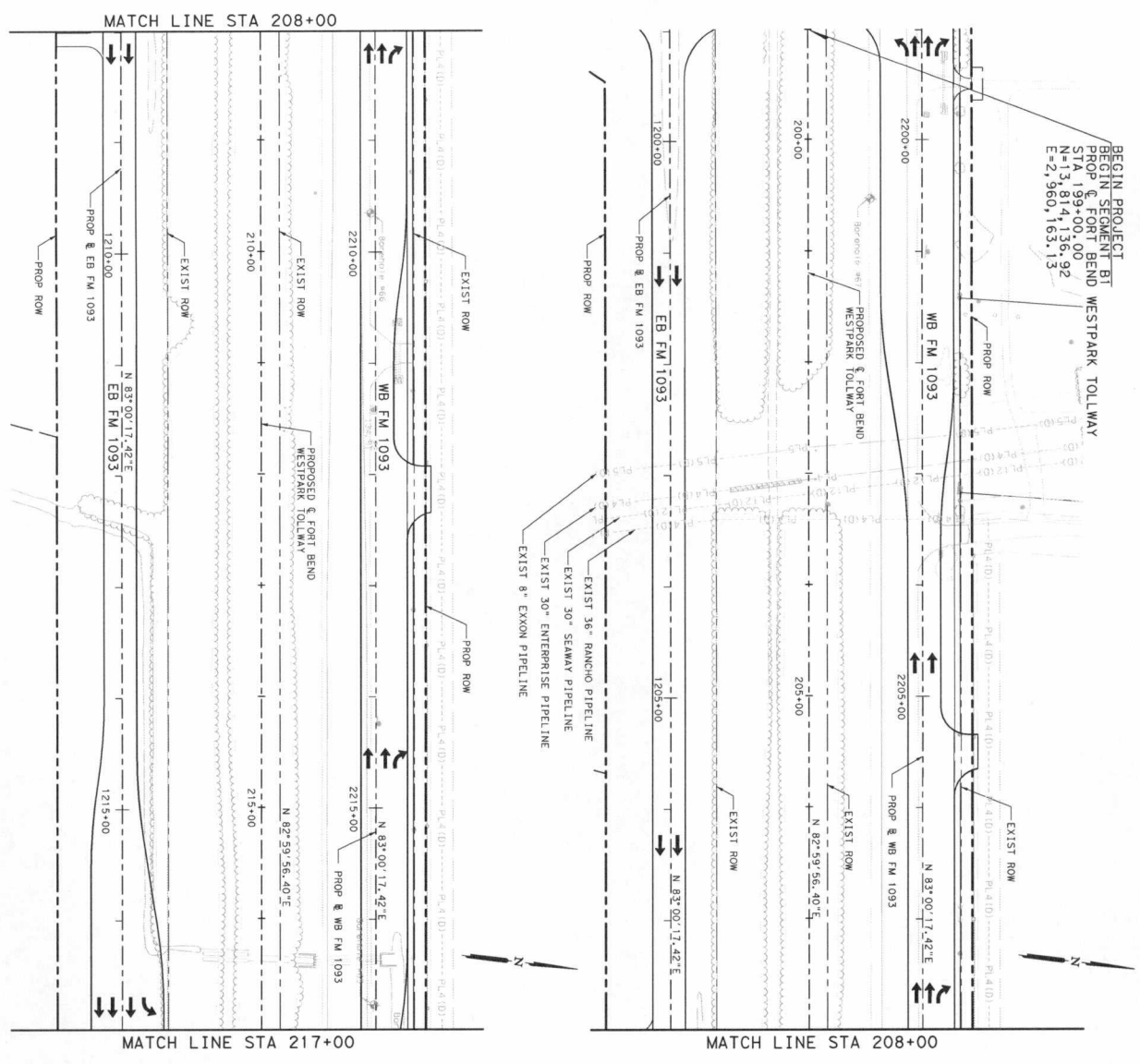
THE STANDARD SHEETS IDENTIFIED AS SHOWN HAVE BEEN SELECTED BY ME OR UNDER MY RESPONSIBLE SUPERVISION AS BEING APPLICABLE TO THIS PROJECT.

MICHAEL P. BARBER, P.E. 02/28/2012  
MICHAEL P. BARBER #107133

MICHAEL P. BARBER, P.E. 02/28/2012  
MICHAEL P. BARBER #107181

MICHAEL P. BARBER, P.E. 02/28/2012  
MICHAEL P. BARBER #88202

MICHAEL P. BARBER, P.E. 02/28/2012  
MICHAEL P. BARBER #88202



BEGIN PROJECT  
BEGIN SEGMENT BI  
PROP & FORT BEND  
STA 199+00.00  
N=13,814,136.92  
E=2,960,163.13

EXIST 36" RANCHO PIPELINE  
EXIST 30" SEAMAX PIPELINE  
EXIST 8" EXXON PIPELINE



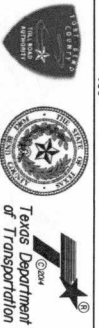
LEGEND  
CURVE  
HORIZONTAL CURVE  
IDENTIFIER

- NOTES:
1. STATIONING IN TITLE BLOCK FOR PROJECT LAYOUT IS BASED ON WESTPARK MAINTLINE STATIONS.
  2. SEE "HORIZONTAL ALIGNMENT DATA" SHEETS FOR FURTHER INFORMATION.



REV	DATE	BY	DESCRIPTION

THE SEAM APPEARING ON THIS DOCUMENT IS AUTHORIZED BY MRS. MAREN A. SHOURANT FERRARIY 28, 2017

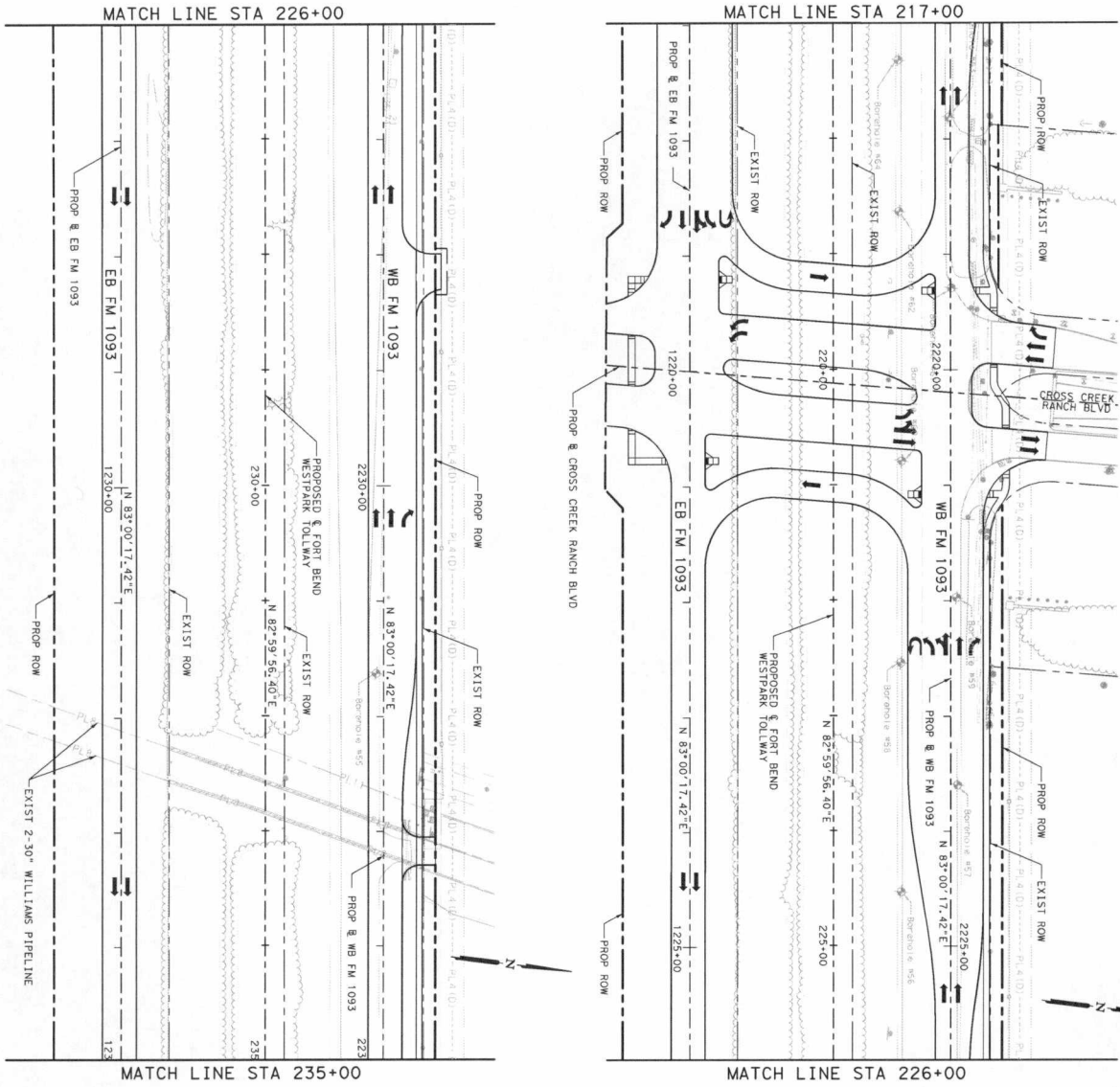


**DANNENBAUM ENGINEERING CORPORATION**  
300 WEST ALABAMA HOUSTON, TX 77060 (713) 281-8551

FM 1093 WESTPARK EXTENSION  
PROJECT LAYOUT  
STA 199+00 TO STA 217+00

DESIGNED BY: JR     DRAWN BY: JJ  
CHECKED BY: MJK     SHEET NO. 1004

COUNT: 0543     JOB: 0653, ETC FM 1093



LEGEND  
 CURVE  
 HORIZONTAL CURVE IDENTIFIER

- NOTES:
1. STATIONING IN TITLE BLOCK, FOR PROJECT LAYOUT IS BASED ON WESTPARK MAINLINE STATIONING.
  2. SEE "HORIZONTAL ALIGNMENT DATA" SHEET'S FOR FURTHER INFORMATION.



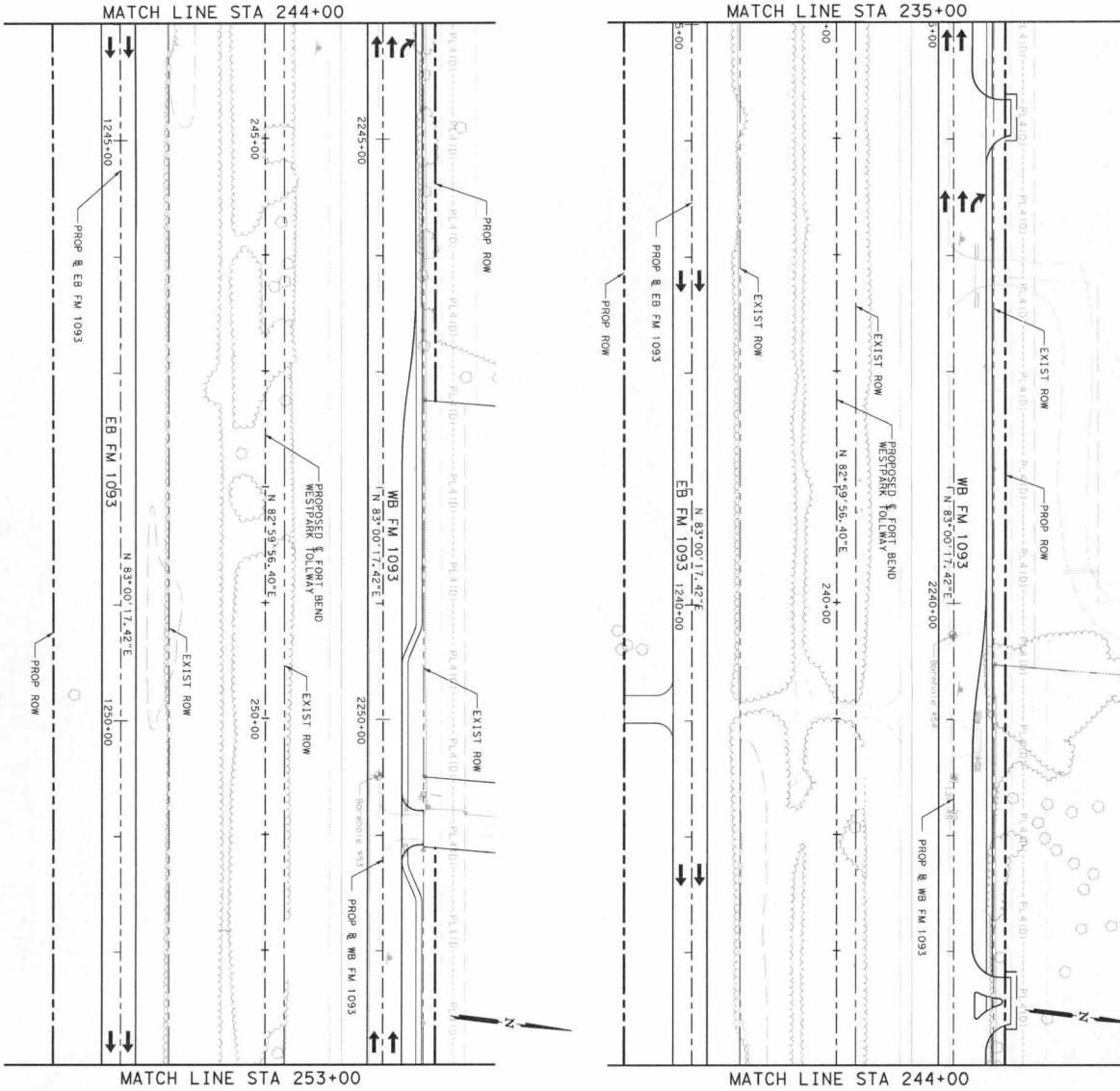
REV	DATE	BY	DESCRIPTION



**DANNENBAUM**  
 ENGINEERING CORPORATION  
 1849 P.E. FIRM REGISTRATION #039  
 3100 WEST ALAMOSA, HOUSTON, TX 77068 (713) 926-8519

PROJECT LAYOUT  
 STA 217+00 TO STA 235+00

DESIGNED BY: JR	DRAWN BY: JJ	SHEET 2 OF 7
CHECKED BY: MJK	CHECKED BY: MH	
COUNTY: [ ]	CONT. SEC. [ ]	JOB [ ]
FWY NO. [ ]	HTY NO. [ ]	SHEET NO. [ ]
FORT BEND 05-43 02 0653 ETC FM 1093		



LEGEND  
 CURVE  
 HORIZONTAL CURVE  
 IDENTIFIER

- NOTES:
1. STATIONING IN TITLE BLOCK, FOR PROJECT LAYOUT IS BASED ON WESTPARK MAINLINE STATIONS.
  2. SEE "HORIZONTAL ALIGNMENT DATA" SHEET(S) FOR FURTHER INFORMATION.



REV	DATE	BY	DESCRIPTION

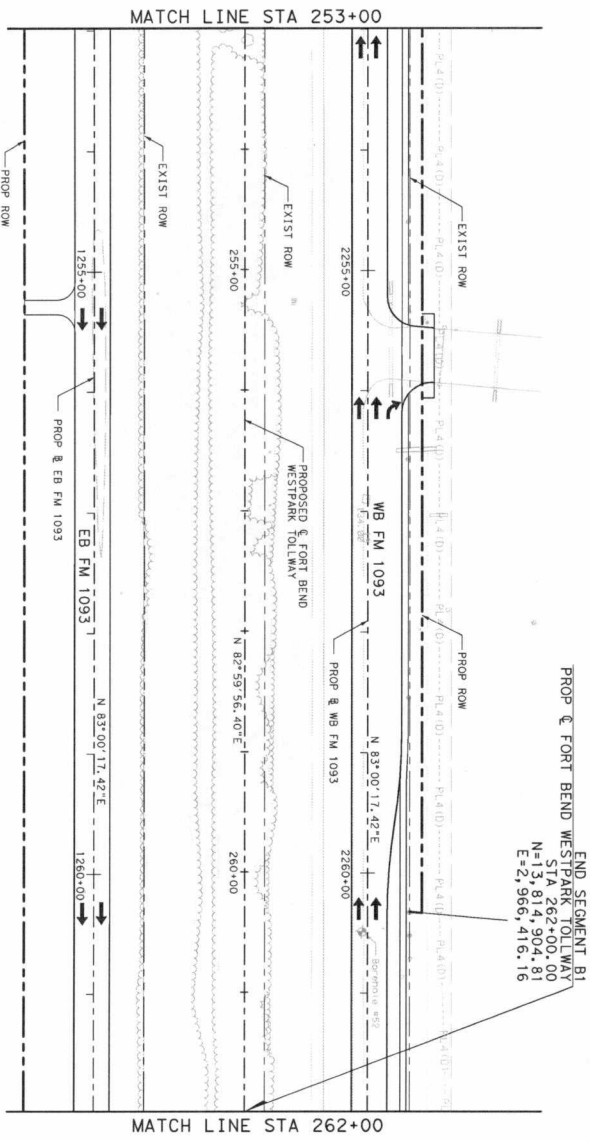
  

DESIGNED BY: JR	DRAWN BY: JJ	SHEET 3 OF 7
CHECKED BY: MKK	CHECKED BY: MH	
COUNTY: HAY	JOB NO.: 0543	
SEC: 02	DATE: 06/31/17	

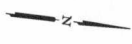
  

<p><b>DANNENBAUM</b>                  ENGINEERING CORPORATION                  1345 FIRM HEIGHTS                  3100 WEST ALABAMA HOUSTON, TX 77063 (713) 506-6619</p>	<p>THE SEAL, AGREEMENT AND THIS DOCUMENT ARE AUTHORIZED BY MAREN A. HOORANI FEBRUARY 28, 2017</p>
--	---

PROJECT LAYOUT  
 STA 235+00 TO STA 253+00

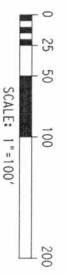


END SEGMENT B1  
 PROP & FORT BEND WESTPARK TOLLWAY  
 STA 262+00.00  
 N=13,814,904.81  
 E=21,966,416.16



LEGEND  
 CURVE  
 HORIZONTAL CURVE  
 IDENTIFIER

- NOTES:
1. STATIONING IN THIS BLOCK FOR THE PROPOSED WESTPARK TOLLWAY SHALL BE IN ACCORDANCE WITH THE WESTPARK MAINLINE STATIONS.
  2. SEE "HORIZONTAL ALIGNMENT DATA" SHEETS FOR FURTHER INFORMATION.



REV	DATE	BY	DESCRIPTION

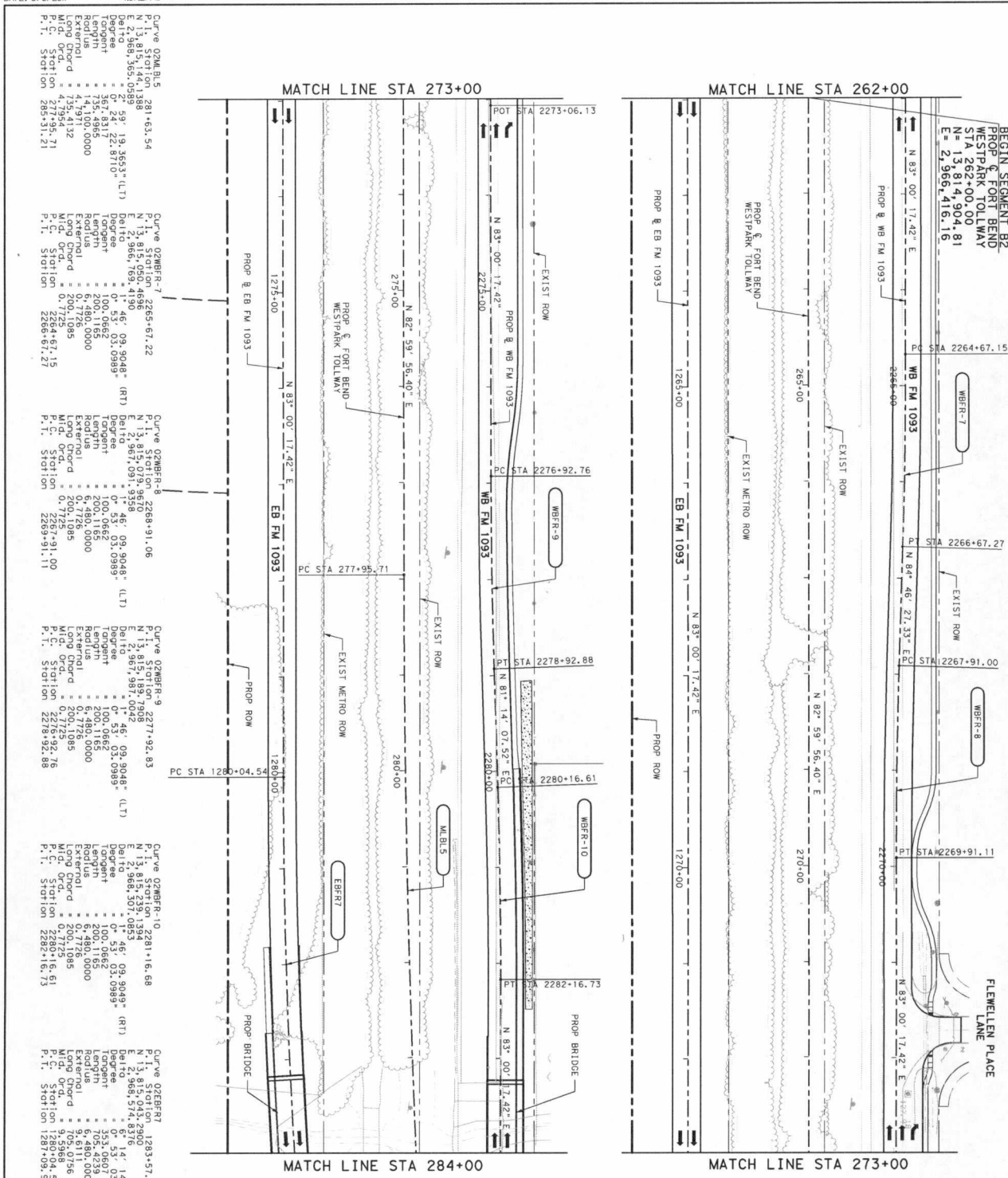
THE SEAL, APPEARING  
 HEREON, IS A PROFESSIONAL  
 ENGINEER'S SEAL,  
 AUTHORIZED BY  
 MAEN A. HOURANI  
 LICENSE NO. 88206  
 EXPIRES FEBRUARY 28, 2017



**DANNENBAUM**  
 ENGINEERING CORPORATION  
 3180 WEST ALABAMA HOUSTON, TX 77063 (713) 282-8819

FM 1093 WESTPARK EXTENSION  
 PROJECT LAYOUT  
 STA 253+00 TO STA 262+00

DESIGNED BY: JR	DRAWN BY: JU	SHEET 4 OF 7
CHECKED BY: MAK	CHECKED BY: MH	
COUNTY: CONT	SEC: JOB	Hwy NO.: SHEET NO.
FONT BEND: 0543	02: 0633	ETC: FM 1093 1007



**NOTES:**

- STATIONING IN TITLE BLOCK, FOR PROJECT LAYOUT IS BASED ON WESTPARK MAINLINE STATIONS.
- SEE "HORIZONTAL ALIGNMENT DATA" SHEETS FOR FURTHER INFORMATION.

SCALE: 1" = 100'

**LEGEND**

- CURVE IDENTIFIER

REV	DATE	BY	DESCRIPTION

Michael E. Burdette  
2-24-2017

**HALFF**  
TRANSPORTATION ENGINEERS AND ARCHITECTS  
1000 WEST WALKER STREET, SUITE 100  
DALLAS, TEXAS 75201-2000  
TEL: 214.760.0000 FAX: 214.760.0000

Dianne Byrd  
2-24-2017

**FM 1093 WESTPARK EXTENSION**

**PROJECT LAYOUT**

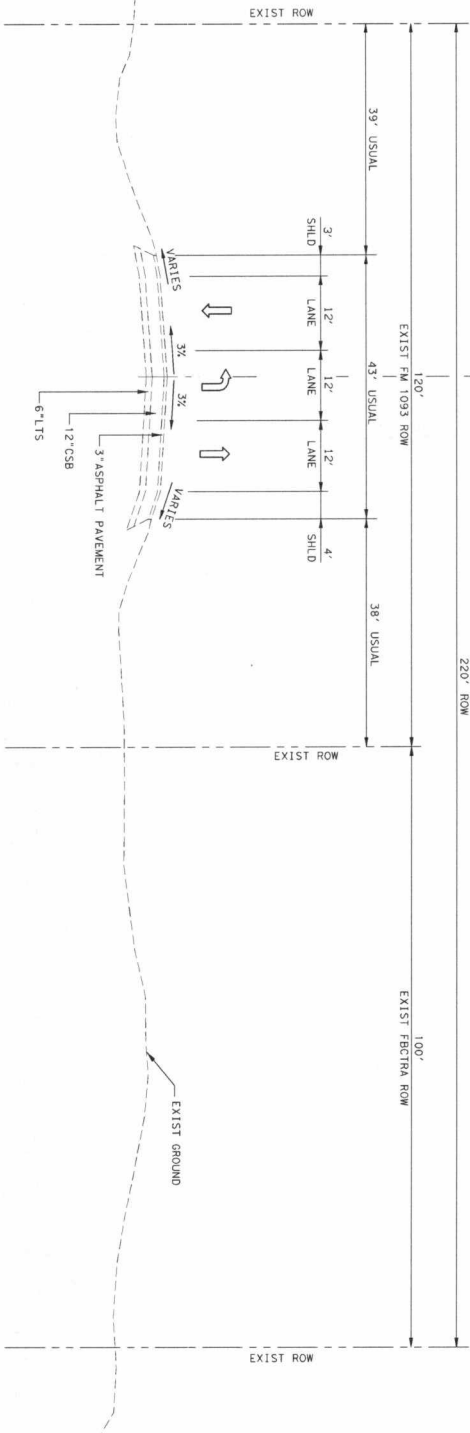
**STA 262+00 TO STA 284+00**

SHEET 5 OF 7

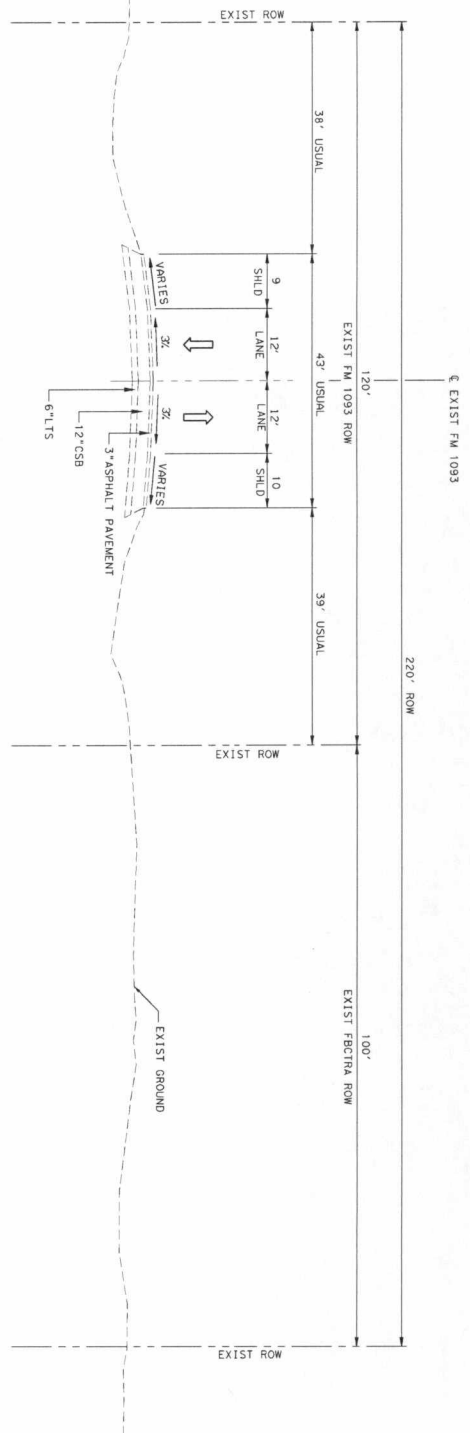
DESIGNED BY: BRC	DRAWN BY: LDW
CHECKED BY: WFB	CHECKED BY: B3
COUNTY: TARRANT	CONTRACT NO.: 0633 ETC FM 1093
SHEET NO.: 1008	







EXISTING FM 1093 SECTION  
PROP. & TOLLWAY STA 210+00 TO STA 220+20



EXISTING FM 1093 SECTION  
PROP. & TOLLWAY STA 199+00 TO STA 210+00  
PROP. & TOLLWAY STA 231+44 TO STA 262+00

- LEGEND**
- ① 12" CRCP
  - ② 1" ASB
  - ③ 6" CEMENT TREATED BASE
  - ④ 6" LTS
  - ⑤ 9" CRCP
  - ⑥ RAIL (TY SSTR) W/DRAIN SLOTS
  - ⑦ RAIL (TY SSTR)
  - ⑧ RAIL (TY SSTR) (42") (TY 1)
  - ⑨ METAL BEAM GUARD FENCE
  - ⑩ 2" PVC CONDUIT (SQHD 80)
  - ⑪ MONO CURB (TYPE 1)
  - ⑫ MONO CURB (TYPE 1)
  - ⑬ 4" RIPRAP (CL B)
  - ⑭ REINFORCED VOLUME
  - ⑮ RETAINING WALL
  - ⑯ DRILL SEED (PERM) (WARM OR COOL)
  - ⑰ BLOCK SOD (BERMUDA)
  - ⑱ 4" TOPSOIL
  - ⑲ 4" SIDEWALK (5')
  - ⑳ PROPOSED LANE
  - ㉑ EXISTING LANE
  - ㉒ TYPICAL SECTION

NOT TO SCALE

REV	DATE	BY	DESCRIPTION

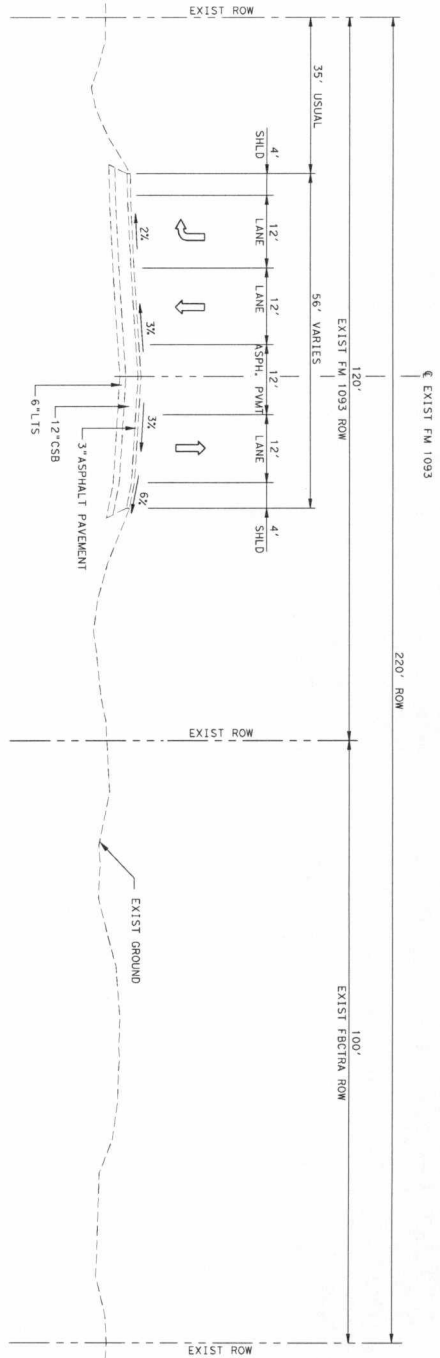
THE SEAL APPEARING  
HEREON IS AUTHORIZED BY  
MAYN A. ROBERT  
FEBRUARY 28, 2017

**Texas Department of Transportation**

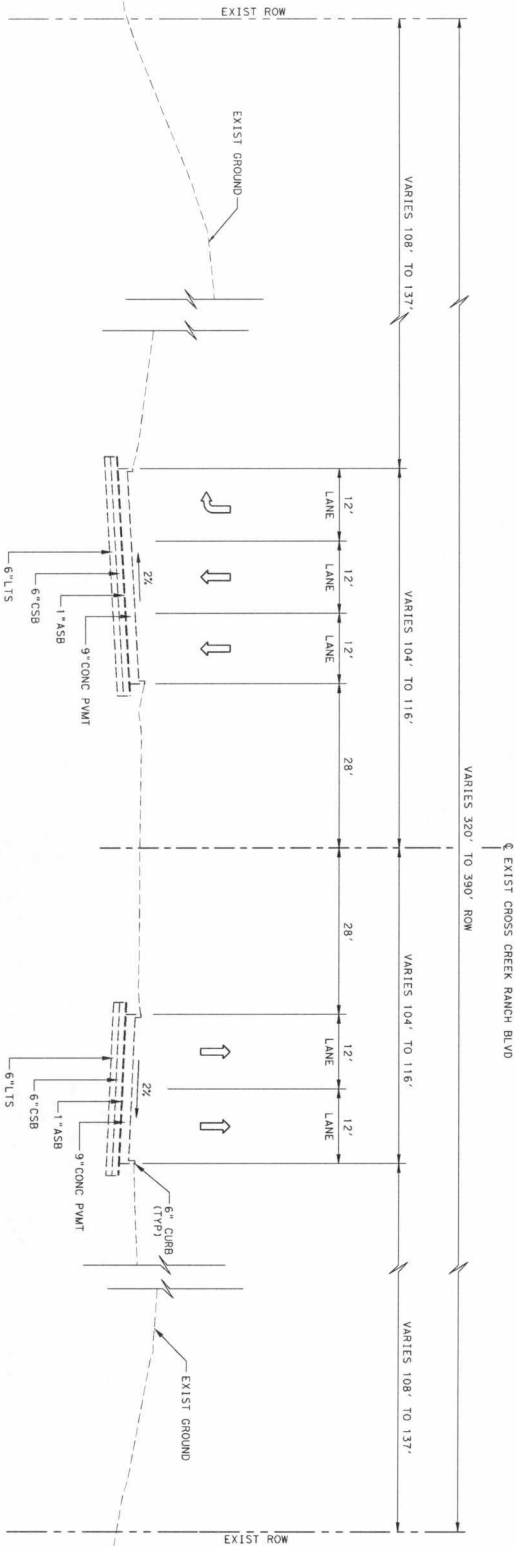
**DANNENBAUM**  
ENGINEERING CORPORATION  
2100 WEST ALABAMA, HOUSTON, TX 77098 (713) 580-8819

FM 1093 WESTPARK EXTENSION  
TYPICAL SECTIONS

DESIGNED BY: JR	DRAWN BY: JJ	SHEET 1 OF 11
CHECKED BY: MJK	CHECKED BY: WH	
COUNTY: CONT	SEC: JOB	HWY NO. SHEET NO.
FORT BEND	05243	02 1063, ETC FM 1093 1011



EXISTING FM 1093  
 PROP & TOLLMAY STA 220+20 TO STA 231+44



EXISTING CROSS CREEK RANCH BLVD SECTION  
 PROP & CCR BLVD STA 5+28 TO STA 6+35

- LEGEND**
- ① 12" CRCP
  - ② 1" ASB
  - ③ 6" GEMENT TREATED BASE
  - ④ 6" LTS
  - ⑤ 9" CRCP
  - ⑥ RAIL (TY SSTR) W/DRAIN SLOTS
  - ⑦ RAIL (TY SSTR)
  - ⑧ RAIL (TY SSTR) (42") (TY 1)
  - ⑨ METAL BEAM GUARD FENCE
  - ⑩ 2" PVC CONDUIT (SCHD 80)
  - ⑪ MONO CURB (TYPE 1)
  - ⑫ MONO CURB (TYPE 11)
  - ⑬ 4" RIPRAP (CL B)
  - ⑭ REINFORCED VOLUME
  - ⑮ RETAINING WALL
  - ⑯ DRILL SEED (PERM) (WARM OR COOL)
  - ⑰ BLOCK SOD (BERMUDA)
  - ⑱ 4" TOPSOIL
  - ⑲ 4" SIDEWALK (5')
  - ➔ PROPOSED LANE
  - ➞ EXISTING LANE
  - ⊗ TYPICAL SECTION

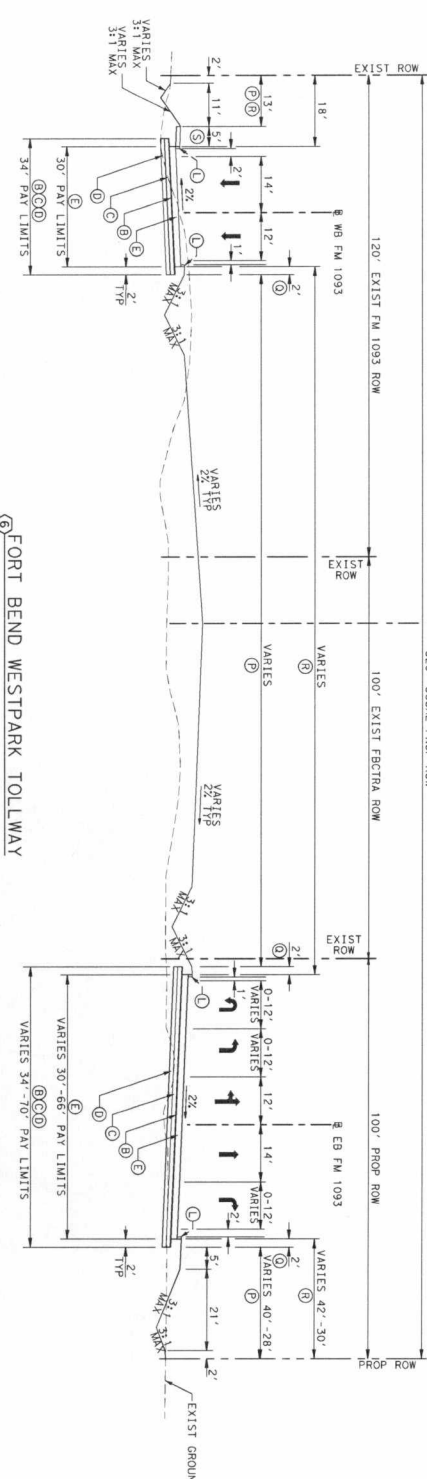
NOT TO SCALE

REV	DATE	BY	DESCRIPTION

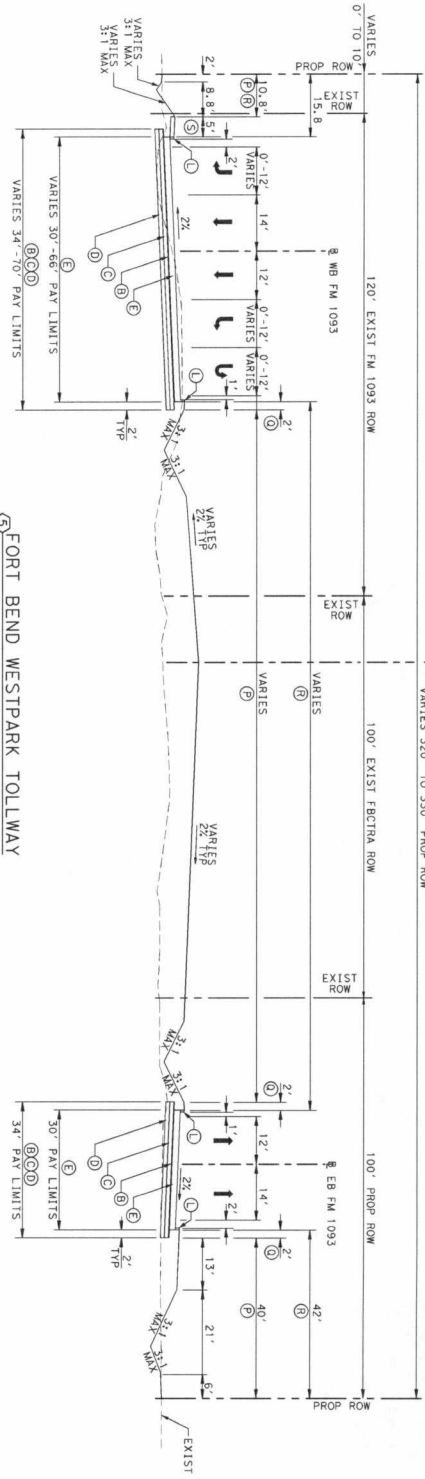


**DANNENBAUM**  
 ENGINEERING CORPORATION  
 3100 WEST ALABAMA, HOUSTON, TX 77056 (713) 280-8819  
 FM 1093 WESTPARK EXTENSION  
 TYPICAL SECTIONS

DESIGNED BY: JR	DRAWN BY: JJ	SHEET 2 OF 11
CHECKED BY: MJK	CHECKED BY: MH	
COUNTY: CONT	SEC: JOB	HWY NO: SHEET NO.
FORT BEND: 0543	02: 0633, ETC: FM 1093	1012



⑤ FORT BEND WESTPARK TOLLWAY  
WBFR STA 2217+73 TO STA 2219+51      EBFR STA 1214+01 TO STA 1219+50



⑥ FORT BEND WESTPARK TOLLWAY  
WBFR STA 2198+99 TO STA 2203+62      EBFR STA 1198+98 TO STA 1203+61

- LEGEND**
- ① 12" CRCP
  - ② 1" ASB
  - ③ 6" CEMENT TREATED BASE
  - ④ 6" LITS
  - ⑤ 9" CRCP
  - ⑥ RAIL (TY SSTR) W/DRAIN SLOTS
  - ⑦ RAIL (TY SSTR)
  - ⑧ RAIL (TY SSCB) (42") (TY 1)
  - ⑨ METAL BEAM GUARD FENCE
  - ⑩ 2" PVC CONDUIT (SCHD 80)
  - ⑪ MONO CURB (TYPE 1)
  - ⑫ MONO CURB (TYPE 11)
  - ⑬ 4" RIPRAP (CL B)
  - ⑭ REINFORCED VOLUME
  - ⑮ RETAINING WALL
  - ⑯ DRILL SEED (PERM) WARM OR COOL BLOCK SOO (GERMUDA)
  - ⑰ 4" TOPSOIL
  - ⑱ 4" SIDEWALK (5')
  - ➔ PROPOSED LANE
  - ➔ EXISTING LANE
  - ⊗ TYPICAL SECTION

- NOTES:**
1. ALL SWALES AND DITCHES SHALL HAVE A FRONT SLOPE AND BACK SLOPE NOT TO EXCEED 3:1 MAX UNLESS NOTED OTHERWISE ON THE PLANS.
  2. SEE ROADWAY PLAN & PROFILE SHEETS FOR LIMITS OF SLEDDING AND SODDING.
  3. SEE ROADWAY PLAN & PROFILE SHEETS FOR CROSS SLOPE TRANSITIONS AT INTERSECTIONS.

NOT TO SCALE

REV	DATE	BY	DESCRIPTION

THE SEAL APPEARING  
HEREON IS AUTHORIZED BY  
MAKEN AS A HOURS  
FEBRUARY 28, 2017

Professional Engineer  
No. 88202  
State of Texas

Seal of the State of Texas  
Professional Engineer  
No. 88202  
State of Texas

Seal of the State of Texas  
Professional Engineer  
No. 88202  
State of Texas

**DANNENBAUM**  
ENGINEERING CORPORATION  
3100 WEST ALPHEA ROAD, HOUSTON, TX 77060 (713) 282-8870

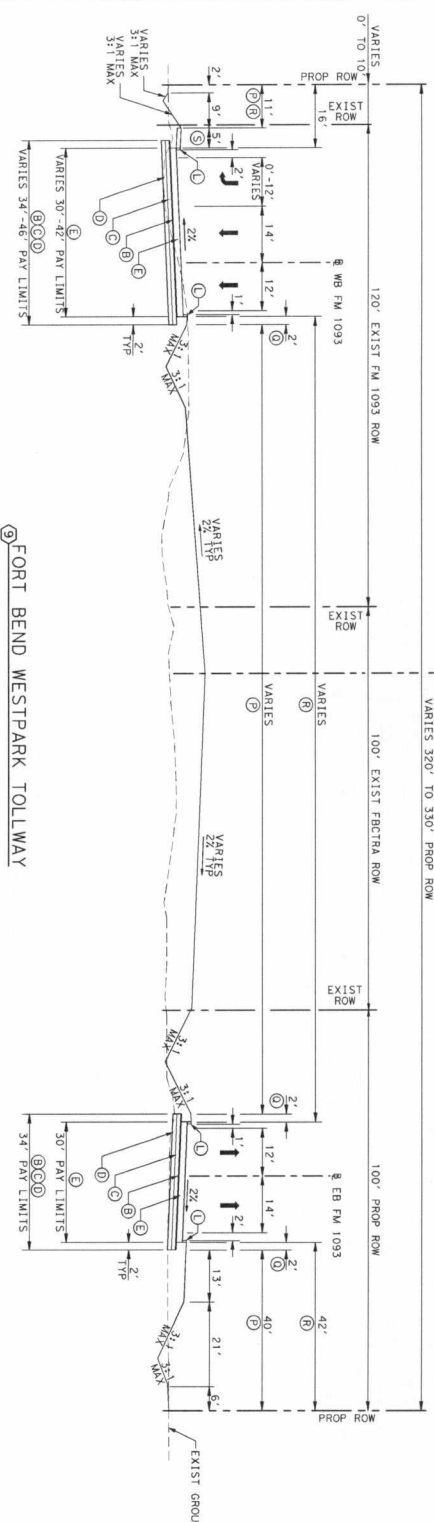
Texas Department  
of Transportation

FM 1093 WESTPARK EXTENSION  
TYPICAL SECTIONS

SHEET 3 OF 11

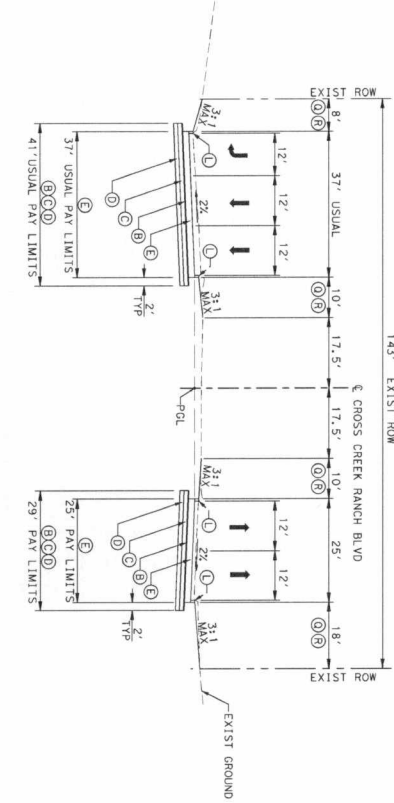
DESIGNED BY:	DRAWN BY:
CHECKED BY:	CHECKED BY:
COUNTY:	JOB:
SECTION:	HWY NO.:
DATE:	SHEET NO.:
05-43	02 0653.ETC FM 1093
1013	1013





MBR STA 2205+09 TO STA 2211+04 EBR STA 1205+09 TO STA 1211+04  
 MBR STA 2211+07 TO STA 2217+73 EBR STA 1211+07 TO STA 1217+03  
 MBR STA 2217+74 TO STA 2223+44 EBR STA 1217+04 TO STA 1223+40  
 MBR STA 2223+45 TO STA 2229+15 EBR STA 1223+41 TO STA 1229+11  
 MBR STA 2229+16 TO STA 2235+86 EBR STA 1229+12 TO STA 1235+78  
 MBR STA 2235+87 TO STA 2241+57 EBR STA 1235+79 TO STA 1241+53  
 MBR STA 2241+58 TO STA 2247+28 EBR STA 1241+54 TO STA 1247+50  
 MBR STA 2247+29 TO STA 2253+99 EBR STA 1247+51 TO STA 1253+87  
 MBR STA 2254+00 TO STA 2260+36 EBR STA 1253+88 TO STA 1260+36

**9 FORT BEND WESTPARK TOLLWAY**



**10 CROSS CREEK BOULEVARD**

STA 5+41 TO STA 6+00

- LEGEND**
- ① 12" CRCP
  - ② 1" ASB
  - ③ 6" CEMENT TREATED BASE
  - ④ 6" L/S
  - ⑤ 9" CRCP
  - ⑥ RAIL (TY SSTR) W/DRAIN SLOTS
  - ⑦ RAIL (TY SSTR)
  - ⑧ RAIL (TY SSCS) (42") (TY 1)
  - ⑨ METAL BEAM GUARD FENCE
  - ⑩ 2" PVC CONDUIT (SCHD 80)
  - ⑪ MONO CURB (TYPE 1)
  - ⑫ MONO CURB (TYPE 1)
  - ⑬ 4" RIPRAP (CL B)
  - ⑭ REINFORCED VOLUME
  - ⑮ RETAINING WALL
  - ⑯ DRILL SEED (PREM) (WARI OR COOL)
  - ⑰ BLOCK SOG (GERMUDA)
  - ⑱ 4" TOPSOIL
  - ⑲ 4" STORMW (5')
  - ⑳ PROPOSED LANE
  - ㉑ EXISTING LANE
  - ㉒ TYPICAL SECTION

- NOTES:**
- ALL SMILES AND DITCHES SHALL HAVE A FRONT SLOPE AND BACK SLOPE NOT TO EXCEED 3:1 MAX UNLESS NOTED OTHERWISE ON THE PLANS.
  - SEE ROADWAY PLAN & PROFILE SHEETS FOR LIMITS OF SEEDING AND SOODING.
  - SEE ROADWAY PLAN & PROFILE SHEETS FOR CROSS SLOPE TRANSITIONS AT INTERSECTIONS.

NOT TO SCALE

REV	DATE	BY	DESCRIPTION

THE SEAL APPEARING ON THIS DRAWING IS THE SEAL OF THE PROFESSIONAL ENGINEER MAEN A. HOSURANI, LICENSE NO. 88202, EXPIRES FEBRUARY 29, 2017.

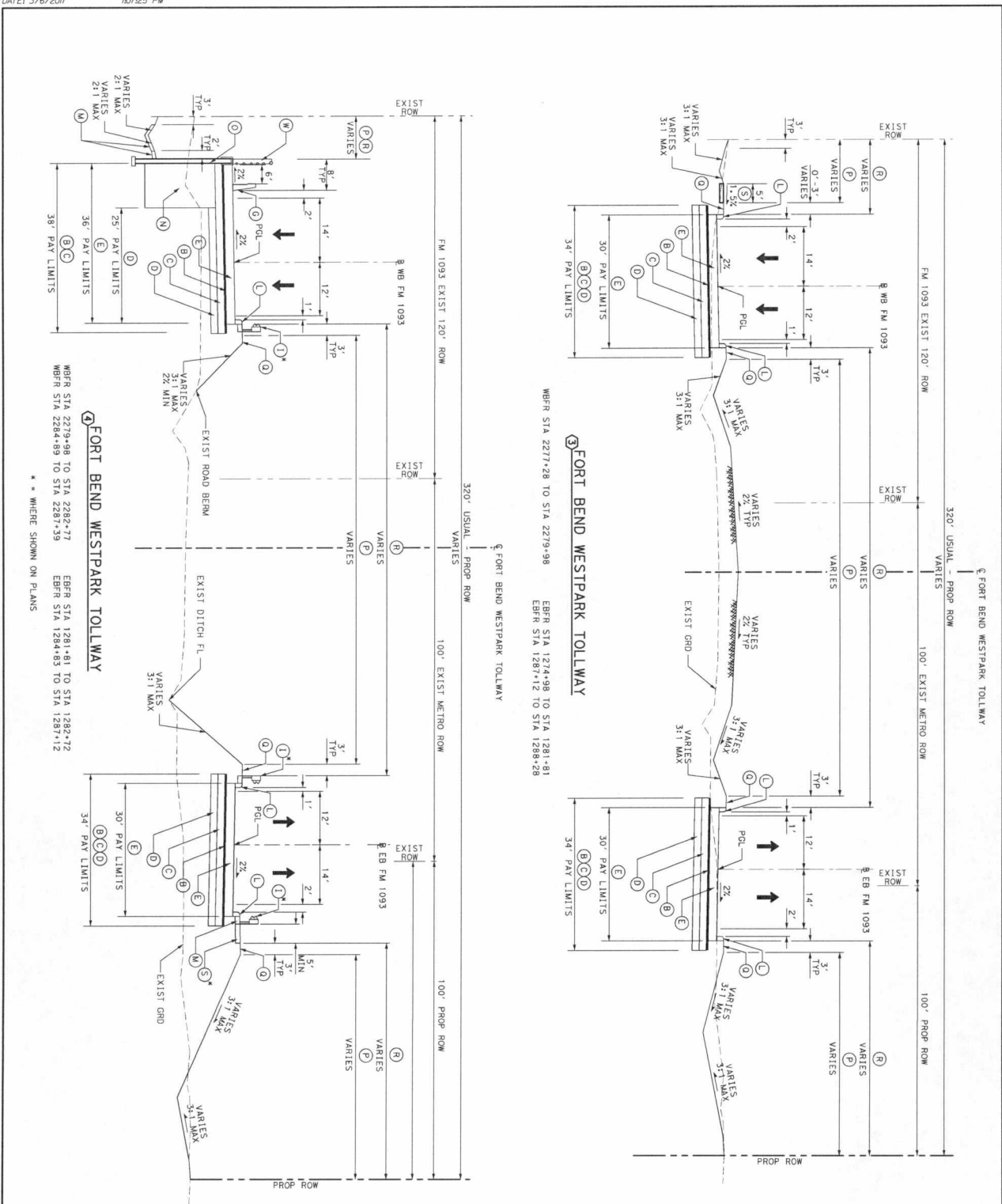
**DANNENBAUM ENGINEERING CORPORATION**  
 300 WEST ALABAMA HIGHWAY, SUITE 1000, FORT WORTH, TEXAS 76102-3870  
 817.335.1111

**Texas Department of Transportation**

**FM 1093 WESTPARK EXTENSION**  
 TYPICAL SECTIONS

SHEET 5 OF 11  
 DESIGNED BY: [ ] DRAWN BY: [ ]  
 CHECKED BY: [ ] CHECKED BY: [ ]  
 COUNTY: [ ] COUNTY SEC: [ ] JOB: [ ] HWY NO.: [ ] SHEET NO.: [ ]  
 FORT BEND 0543 02 063, ETC FM 1093 1015





3 FORT BEND WESTPARK TOLLWAY  
 WBR STA 2277+28 TO STA 2279+98  
 EBR STA 1274+98 TO STA 1281+81  
 EBR STA 1287+12 TO STA 1288+28

4 FORT BEND WESTPARK TOLLWAY  
 WBR STA 2279+98 TO STA 2282+77  
 EBR STA 1281+81 TO STA 1282+72  
 WBR STA 2284+89 TO STA 2287+39  
 EBR STA 1284+83 TO STA 1287+12

\* WHERE SHOWN ON PLANS

- LEGEND**
- (A) 12" CRCP
  - (B) 1" ASB
  - (C) 6" CEMENT TREATED BASE
  - (D) 6" LTS
  - (E) 9" CRCP
  - (F) RAIL (TY SSTR) W/DRAIN SLOTS
  - (G) RAIL (TY SSTR)
  - (H) RAIL (TY SSCB) (42") (TY 1)
  - (I) METAL BEAM GUARD FENCE
  - (J) 2" PVC CONDUIT (SCHD 80)
  - (K) MONO CURB (TYPE 1)
  - (L) MONO CURB (TYPE 1)
  - (M) 4" RIPRAP (CL B)
  - (N) REINFORCED VOLUME
  - (O) RETAINING WALL
  - (P) DRILL SEED (PREM) (WARM OR COOL)
  - (Q) BLOCK SOD (BERMUDA)
  - (R) 4" TOPSOIL
  - (S) 4" SIDEWALK (5')
  - (T) 3" HMA
  - (U) 9" ASB
  - (V) PRIME COAT
  - (W) RAIL (PH1)
  - (X) PROPOSED LANE
  - (Y) EXISTING LANE
  - (Z) TYPICAL SECTION

NOTES:  
 1. ALL SNALES AND DITCHES SHALL HAVE TO BE OPEN 3' AND BACK SLOPED OTHERWISE ON THE PLANS.

REV	DATE	BY	DESCRIPTION

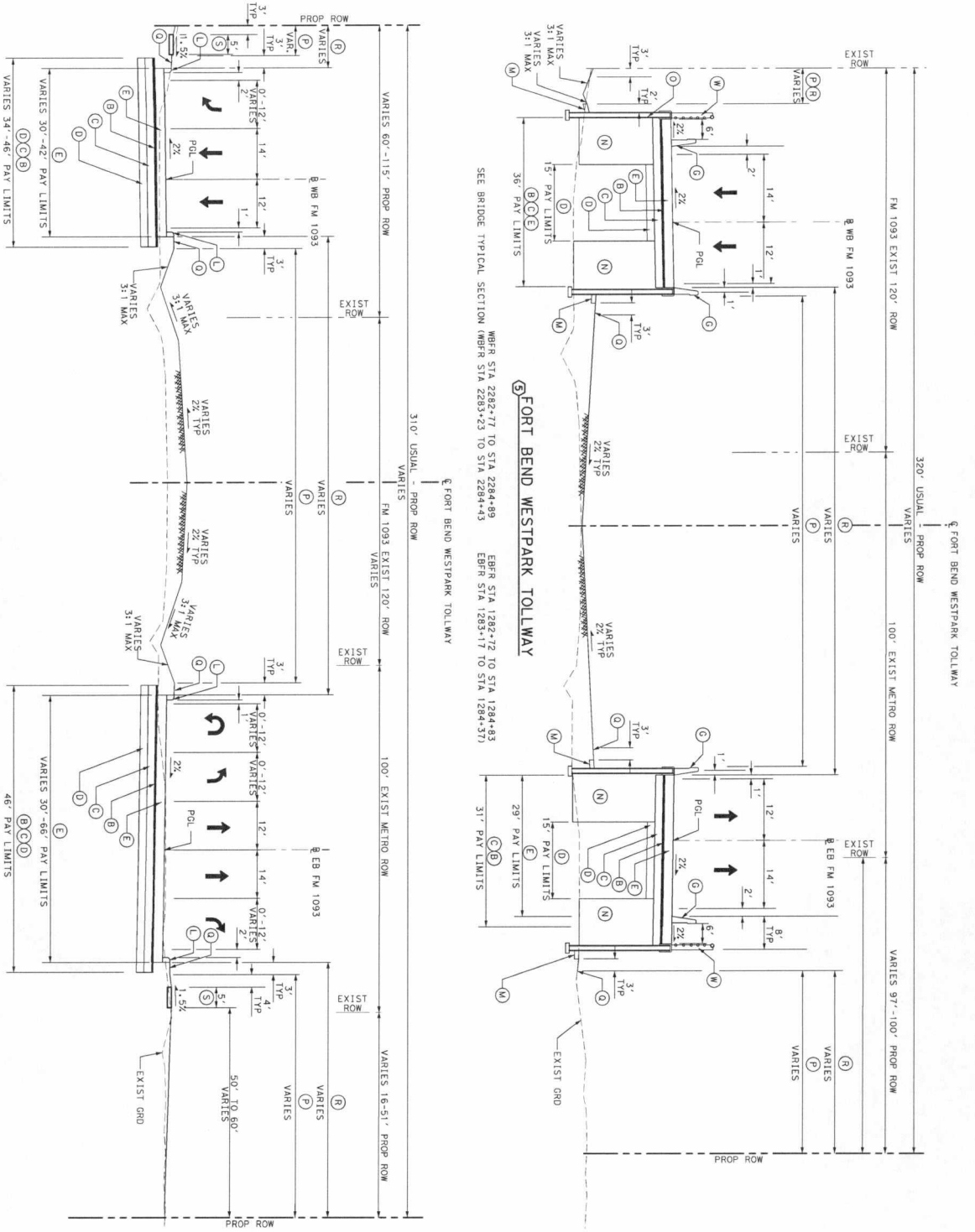
DESIGNED BY: BRC	DRAWN BY: LDW
CHECKED BY: MPR	CHECKED BY: B3
COUNT SEC: JOB	HWY NO.: SHEET NO.
FORT BEND 05431 02 063, ETCI FM 1093 1017	

THE TEXAS DEPARTMENT OF TRANSPORTATION HAS REVIEWED THIS PLAN AND APPROVES IT FOR CONSTRUCTION. THIS REVIEW IS LIMITED TO THE TECHNICAL ASPECTS OF THE PLAN AND DOES NOT CONSTITUTE A GUARANTEE OF THE ACCURACY OF THE INFORMATION PROVIDED HEREON. THE USER OF THIS PLAN SHALL BE RESPONSIBLE FOR OBTAINING ALL NECESSARY PERMITS AND FOR VERIFYING THE ACCURACY OF ALL INFORMATION PROVIDED HEREON.

2-24-2017

**HALFF**  
 TEXAS DEPARTMENT OF TRANSPORTATION  
 1000 TEXAS STATE CAPITOL BUILDING  
 AUSTIN, TEXAS 78703-0001  
 TEL: (512) 389-6300 FAX: (512) 389-6301



MBFR STA 2287+39 TO STA 2299+51 EBR STA 1293+45 TO STA 1299+33

**FORT BEND WESTPARK TOLLWAY**

MBFR STA 2282+77 TO STA 2284+99 EBR STA 1282+72 TO STA 1284+83  
SEEBRIDGE TYPICAL SECTION MBFR STA 2283+23 TO STA 2284+43 EBR STA 1283+17 TO STA 1284+37

**FORT BEND WESTPARK TOLLWAY**

- LEGEND**
- (A) 12" CRCP
  - (B) 1" ASB
  - (C) 6" CEMENT TREATED BASE
  - (D) 6" LTS
  - (E) 9" CRCP
  - (F) RAIL (TY SSTR) W/DRAIN SLOTS
  - (G) RAIL (TY SSTR)
  - (H) RAIL (TY SSCB) (42") (TY 1)
  - (I) METAL BEAM GUARD FENCE
  - (J) 2" PVC CONDUIT (SCHD 80)
  - (K) MONO CURB (TYPE 1)
  - (L) 4" RIPRAP (CL B)
  - (M) REINFORCED VOLUME
  - (N) RETAINING WALL
  - (O) DRILL SEED (FERN) (WARM OR COOL)
  - (P) BLOCK SOD (BERMUDA)
  - (Q) 4" TOPSOIL
  - (R) 4-SIDEWALK (5')
  - (S) 3" HAAC
  - (T) 9" ASB
  - (U) PAINE COAT
  - (V) RAIL (PR1)
  - (W) PROPOSED LANE
  - (X) EXISTING LANE
  - (Y) TYPICAL SECTION
- NOTES**
1. ALL SMALES AND DITCHES SHALL HAVE A FRONT SLOPE AND BACK SLOPE NOT TO OTHERWISE ON THE PLANS.

REV	DATE	BY	DESCRIPTION

THE STATE OF TEXAS  
COUNTY OF HARRIS  
CITY OF HOUSTON  
I, MICHAEL P. HARRIS, County Clerk, do hereby certify that the above and foregoing is a true and correct copy of the original as filed in my office on 03/06/2017 at 10:25 AM.

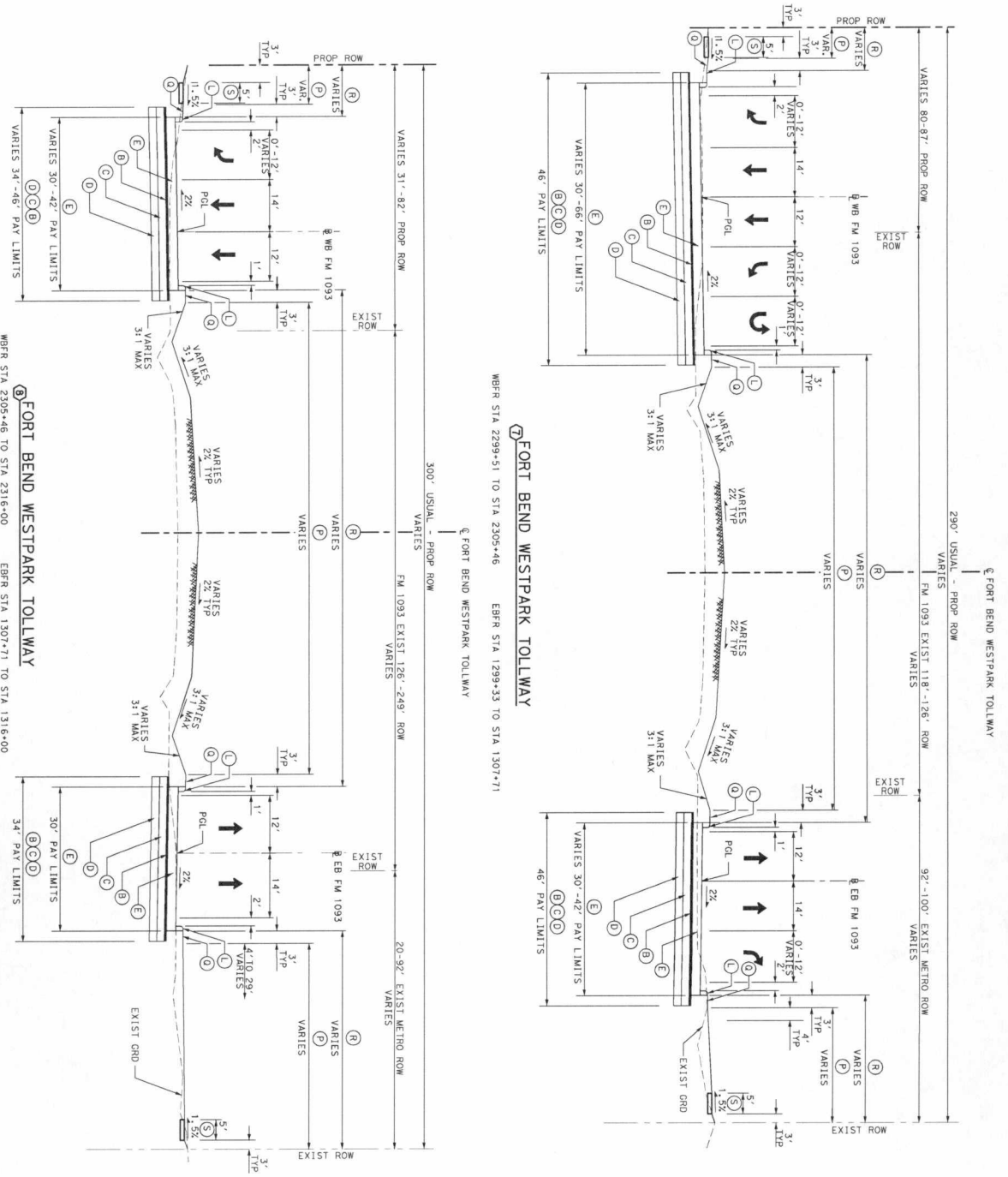
*Michael P. Harris*  
2-24-2017

**HALFF**  
Texas Department of Transportation

FM 1093 WESTPARK EXTENSION  
TYPICAL SECTIONS

DESIGNED BY: BRC    DRAWN BY: LDW  
CHECKED BY: MPB    CHECKED BY: B3  
COUNTY:    JOB:    HWY NO.:    SHEET NO.:  
FORT BEND 05431 02 063.ETC FM 1093    1018

SHEET 8 OF 11



- LEGEND**
- ① 12" CRCP
  - ② 1" ASB
  - ③ 6" CEMENT TREATED BASE
  - ④ 6" LTS
  - ⑤ 9" CRCP
  - ⑥ RAIL (TY SSTR) W/DRAIN SLOTS
  - ⑦ RAIL (TY SSTR)
  - ⑧ RAIL (TY SSCB) (42") (TY 1)
  - ⑨ METAL BEAM GUARD FENCE
  - ⑩ 2" PVC CONDUIT (CSGD 80)
  - ⑪ MOND CURB (TYPE 1)
  - ⑫ MOND CURB (TYPE 1)
  - ⑬ 4" RIPRAP (CL B)
  - ⑭ REINFORCED VOLUME
  - ⑮ RETAINING WALL
  - ⑯ DRILL SEED (PERM) (WARM OR COOL)
  - ⑰ BLOCK SOD (BREMUDA)
  - ⑱ 4" TOPSOIL
  - ⑲ 4" SIDEWALK (5')
  - ⑳ 3" PHAC
  - ㉑ 9" ASB
  - ㉒ PRIME COAT
  - ㉓ RAIL (FR1)
  - ➔ PROPOSED LANE
  - ➔ EXISTING LANE
  - ⊗ TYPICAL SECTION

**NOTES:**

1. ALL SMALLS AND DITCHES SHALL HAVE A FRONT SLOPE AND BACK SLOPE OTHERWISE ON THE PLANS.

REV DATE	BY	DESCRIPTION

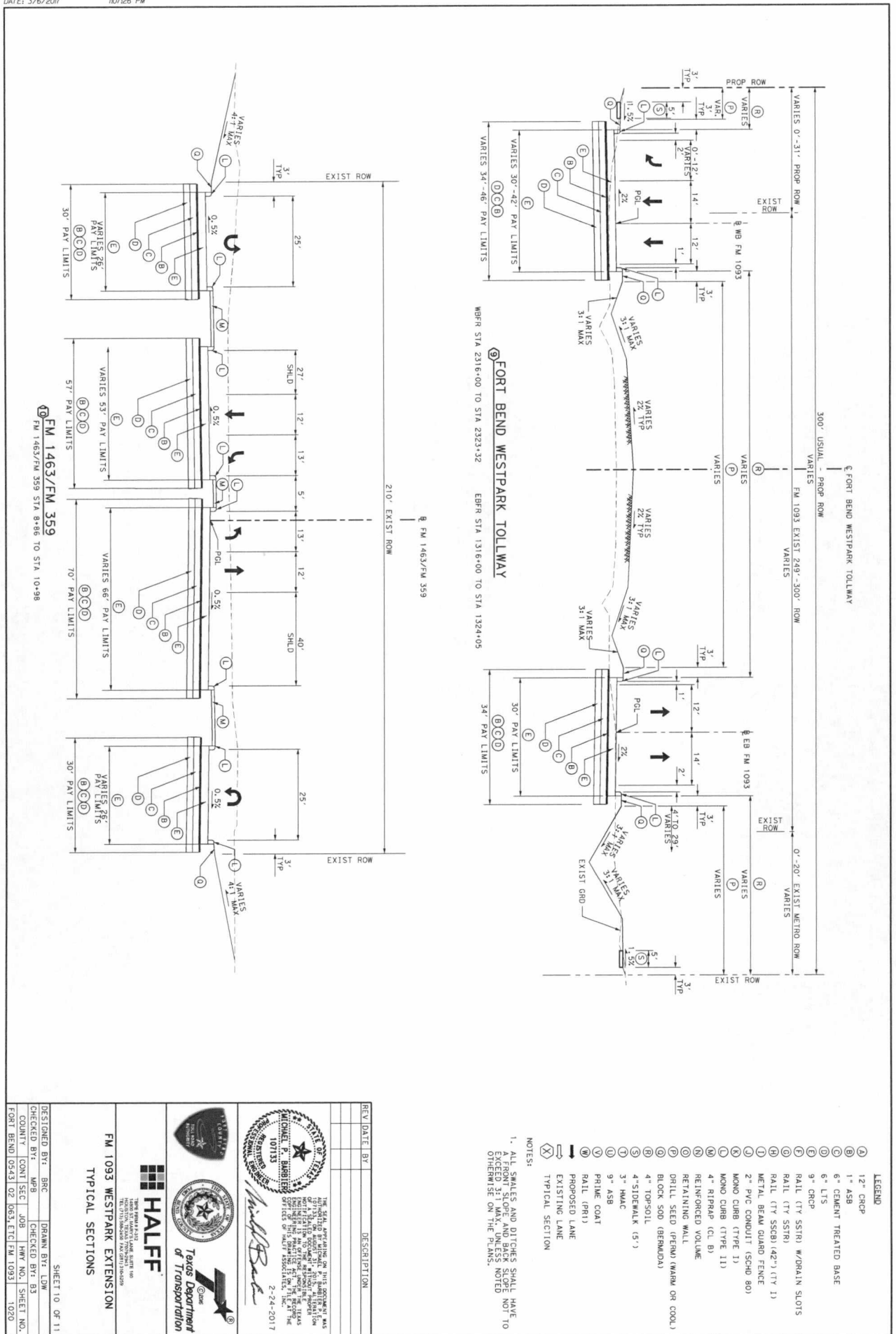
DESIGNED BY: BRC	DRAWN BY: LDW	SHEET 9 OF 11
CHECKED BY: WFB	CHECKED BY: B3	
COUNTY: CONJ SEC	JOB: HWY NO.	SHEET NO.
FORT BEND 0543 02	063, ETC FM 1093	1019

**HALFF**  
 THE TEXAS ENGINEERING SOCIETY  
 1000 WEST WASHINGTON AVENUE, SUITE 1000  
 AUSTIN, TEXAS 78701-3000

Michael P. Anderson  
 2-24-2017

FM 1093 WESTPARK EXTENSION  
 TYPICAL SECTIONS



- LEGEND**
- (A) 12" CRCP
  - (B) 1" ASB
  - (C) 6" CEMENT TREATED BASE
  - (D) 6" LTS
  - (E) 9" CRCP
  - (F) RAIL (TY SSTR) W/DRAIN SLOTS
  - (G) RAIL (TY SSTR)
  - (H) RAIL (TY SSCB) (42") (TY 1)
  - (I) METAL BEAM GUARD FENCE
  - (J) 2" PVC CONDUIT (SCHD 80)
  - (K) MONO CURB (TYPE 1)
  - (L) 4" RIPRAP (CL B)
  - (M) REINFORCED VOLUME
  - (N) DRILL SEED (PERMAN) (MARK OR COOL)
  - (O) BLOCK SOD (BERMUDA)
  - (P) 4" TOPSOIL
  - (Q) 4" SIDEWALK (5')
  - (R) 3" MAC
  - (S) 9" ASB
  - (T) PRIME COAT
  - (U) RAIL (PH1)
  - (V) PROPOSED LANE
  - (W) EXISTING LANE
  - (X) TYPICAL SECTION

**NOTES:**

1. ALL SMALES AND DITCHES SHALL HAVE EXCEPT SLOPES AND BANK SLOPES OTHERWISE ON THE PLANS.

REV	DATE	BY	DESCRIPTION

THIS SEAL IS VALID FOR THE STATE OF TEXAS ONLY. IT IS VOID IF USED IN ANY OTHER STATE OR FOR ANY OTHER PURPOSE. THE TEXAS ENGINEERING BOARD HAS REVIEWED THIS SEAL AND FOUND IT TO BE IN COMPLIANCE WITH THE TEXAS ENGINEERING BOARD'S REGULATIONS. THE TEXAS ENGINEERING BOARD'S REGULATIONS ARE AVAILABLE ON THE BOARD'S WEBSITE AT WWW.TEXASENGINEERINGBOARD.COM. THE BOARD'S OFFICE IS LOCATED AT 1100 WEST 17TH STREET, SUITE 100, FORT WORTH, TEXAS 76102. THE BOARD'S PHONE NUMBER IS 817-515-1013.

*Michael P. Barberis*  
 MICHAEL P. BARBERIS  
 01713  
 2-24-2017



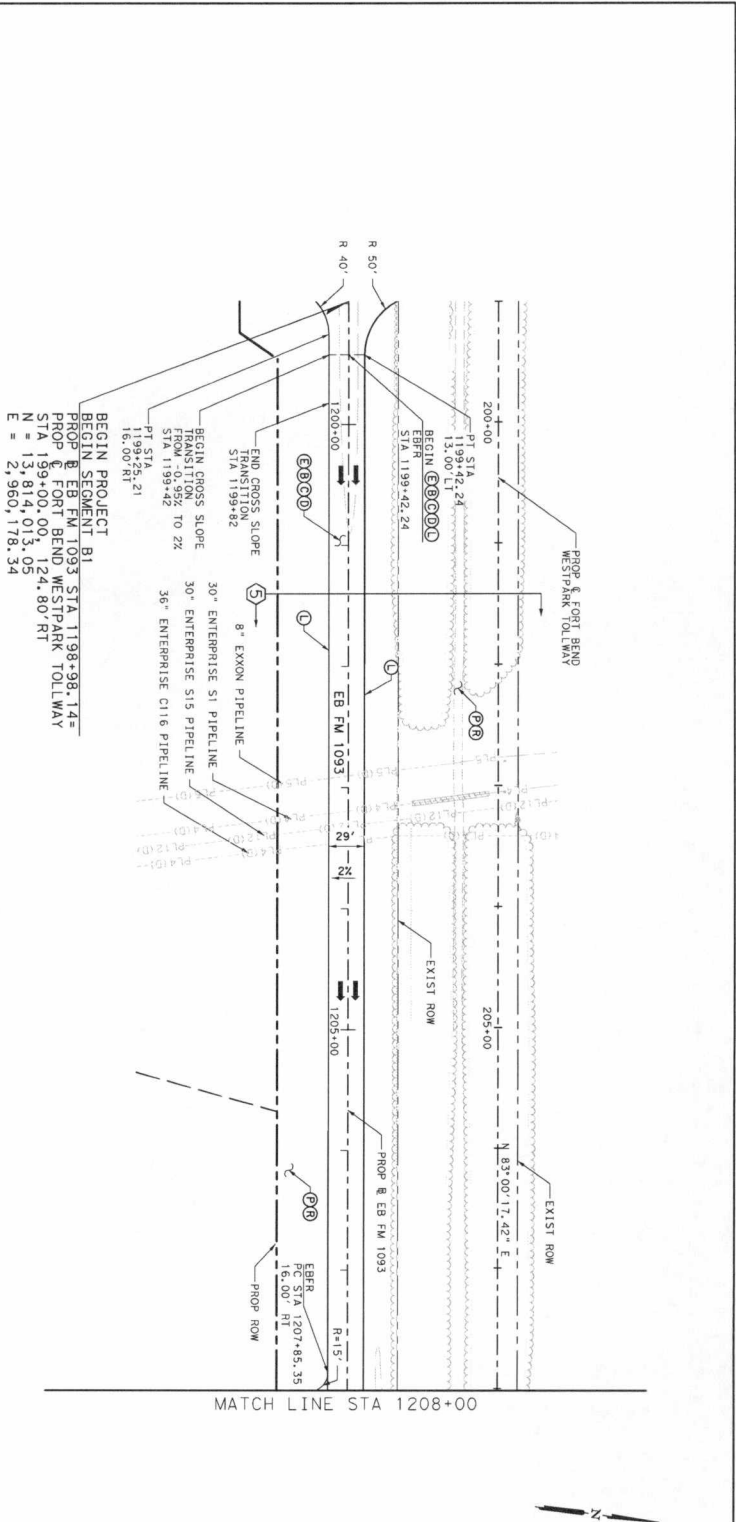
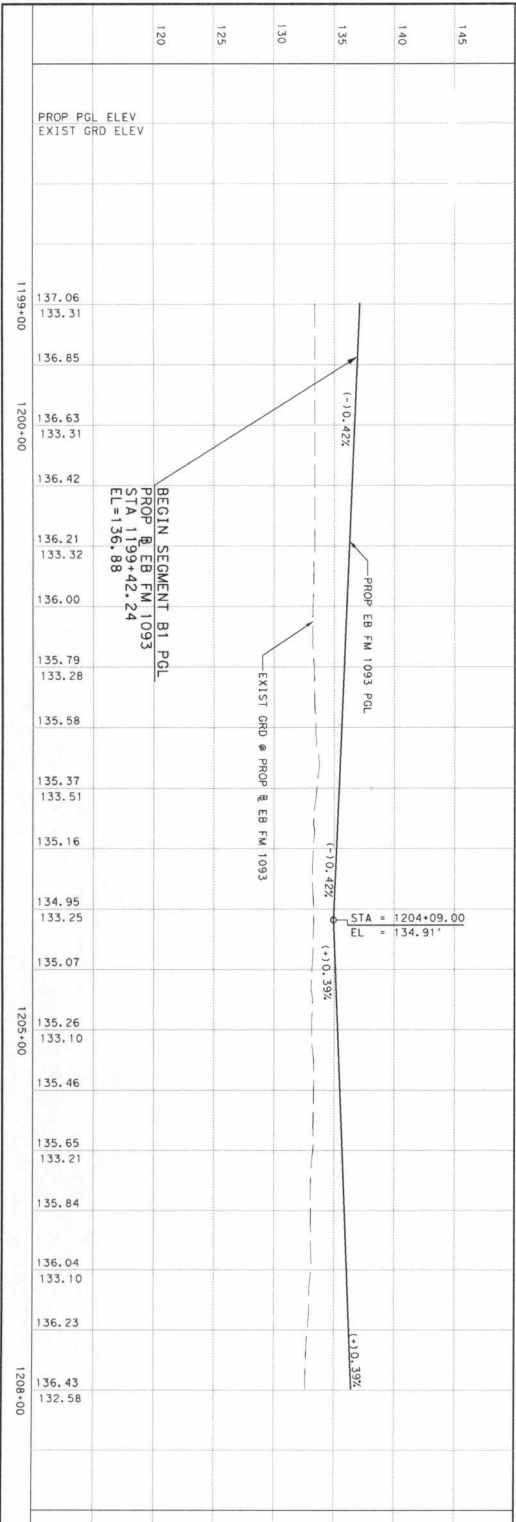
**HALFF**  
 TRANSPORTATION  
 1400 WEST VALLEY LANE SUITE 100  
 FORT WORTH, TEXAS 76102  
 TEL: (817) 552-0000 FAX: (817) 552-0001

**Texas Department of Transportation**

**FM 1093 WESTPARK EXTENSION**  
 TYPICAL SECTIONS

SHEET 10 OF 11

DESIGNED BY: BRC	DRAWN BY: LJM
CHECKED BY: MPR	CHECKED BY: BS
COUNT SEC: JOB	HWY NO.: SHEET NO.
FORT BEND 0543 02 063, ETC FM 1093 1020	



**LEGEND**

- ① 12" CRCP
- ② 1" ASB
- ③ 6" CEMENT TREATED BASE
- ④ 6" LITS
- ⑤ 9" CRCP
- ⑥ RAIL (TY SSTR) W/DRAIN SLOTS
- ⑦ RAIL (TY SSTR)
- ⑧ RAIL (TY SSCB) (42") (TY 1)
- ⑨ METAL BEAM GUARD FENCE
- ⑩ 2" PVC CONDUIT (SCH 80)
- ⑪ MOND CURB (TYPE 1)
- ⑫ MOND CURB (TYPE 1)
- ⑬ 4" RIPRAP (CL B)
- ⑭ RETAINING WALL
- ⑮ DRILL SEED (PENN) (WARM OR COOL)
- ⑯ BLOCK SOD (BERMUDA)
- ⑰ 4" TOPSOIL
- ⑱ 4" SIDEMALK (S')
- ⑲ PROPOSED LANE
- ⑳ EXISTING LANE
- ㉑ TYPICAL SECTION

**NOTES:**

1. DIMENSIONS ARE TO FACE OF CURB UNLESS OTHERWISE NOTED.
2. SEE TYPICAL SECTION SHEETS FOR LIMITS OF CONSTRUCTION.

SCALE: 1"=100' - H  
1"=10' - V

REV DATE BY DESCRIPTION

THE SEAL APPEARING ON THIS DRAWING IS AUTHORIZED BY M.A.S. MADE AN HOURANT FEBRUARY 28, 2017

**DANNENBAUM ENGINEERING CORPORATION**  
1845 P.E. FIRM REGISTRATION #820  
3100 WEST ALAKAMA HOUSTON, TX 77068 (713) 926-8571

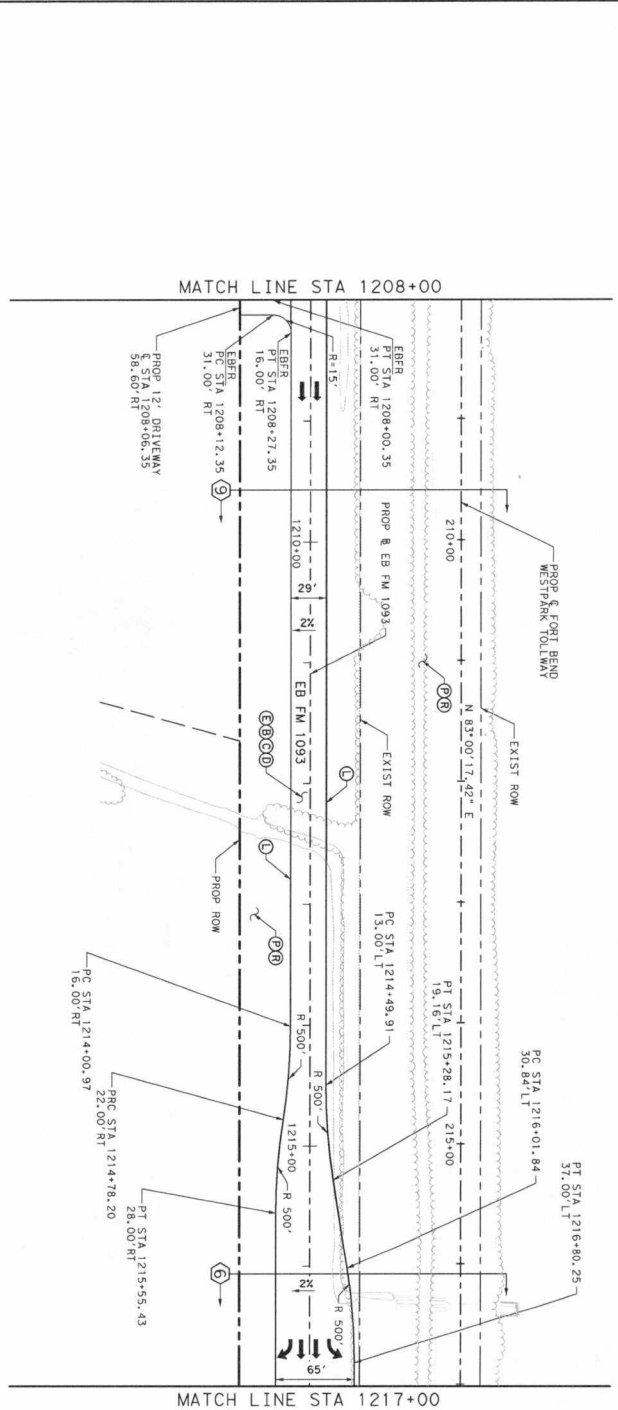
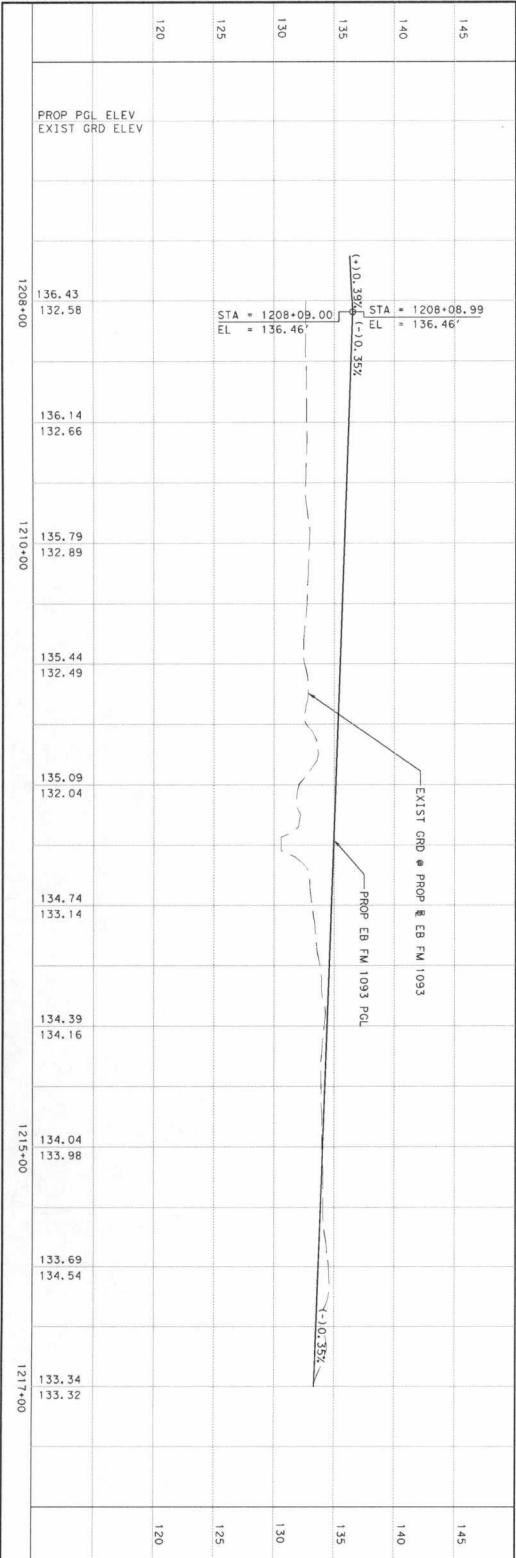
**Texas Department of Transportation**

**ROADWAY PLAN & PROFILE**  
EASTBOUND FM 1093  
STA 1198+98.14 TO STA 1208+00

FM 1093 WESTPARK EXTENSION

DESIGNED BY: JR DRANN BY: JJJ  
CHECKED BY: MJK JOB HWY NO.: SHEET NO.  
COUNTY: CONT SEC JOB HWY NO.: SHEET NO.  
FORT BEND 0543 02 063, ETC FM 1093 1136

SHEET 1 OF 13



- LEGEND**
- (A) 12" GRCP
  - (B) 1" ASB
  - (C) 6" CEMENT TREATED BASE
  - (D) 6" LIS
  - (E) 9" CRCP
  - (F) RAIL (TY SSTR) W/DRAIN SLOTS
  - (G) RAIL (TY SSTR)
  - (H) RAIL (TY SSCB) (42") (TY 1)
  - (I) METAL BEAM GUARD FENCE
  - (J) 2" PVC CONDUIT (SCHD 80)
  - (K) MONO CURB (TYPE 1)
  - (L) MONO CURB (TYPE 1)
  - (M) 4" RIPRAP (CL B)
  - (N) REINFORCED VOLUME
  - (O) RETAINING WALL
  - (P) DRILL SEED (PERM) (WARR OR COOL)
  - (Q) BLOCK 500 (BERMUDA)
  - (R) 4" TOPSOIL
  - (S) 4" SIDEWALK (5')
  - (T) PROPOSED LANE
  - (U) EXISTING LANE
  - (V) TYPICAL SECTION

**NOTES:**  
1. ALL DIMENSIONS ARE TO FACE.  
2. SEE TYPICAL SECTION SHEETS FOR LIMITS OF CONSTRUCTION.

REV	DATE	BY	DESCRIPTION

THE SEAL, APPROVING OR AUTHORIZING BY WAS MAILED FEBRUARY 28, 2017

**DANNENBAUM ENGINEERING CORPORATION**  
2108 WEST ALABAMA, HOUSTON, TX 77098 (713) 328-2810

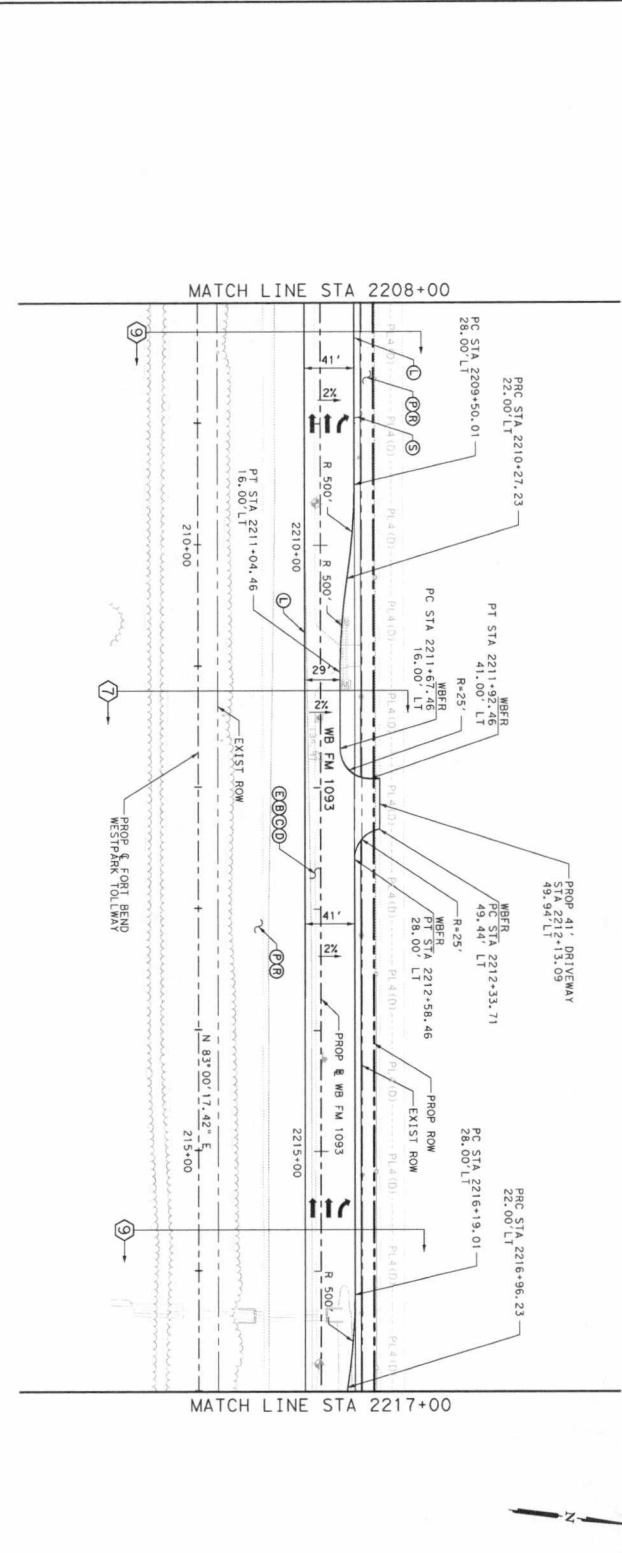
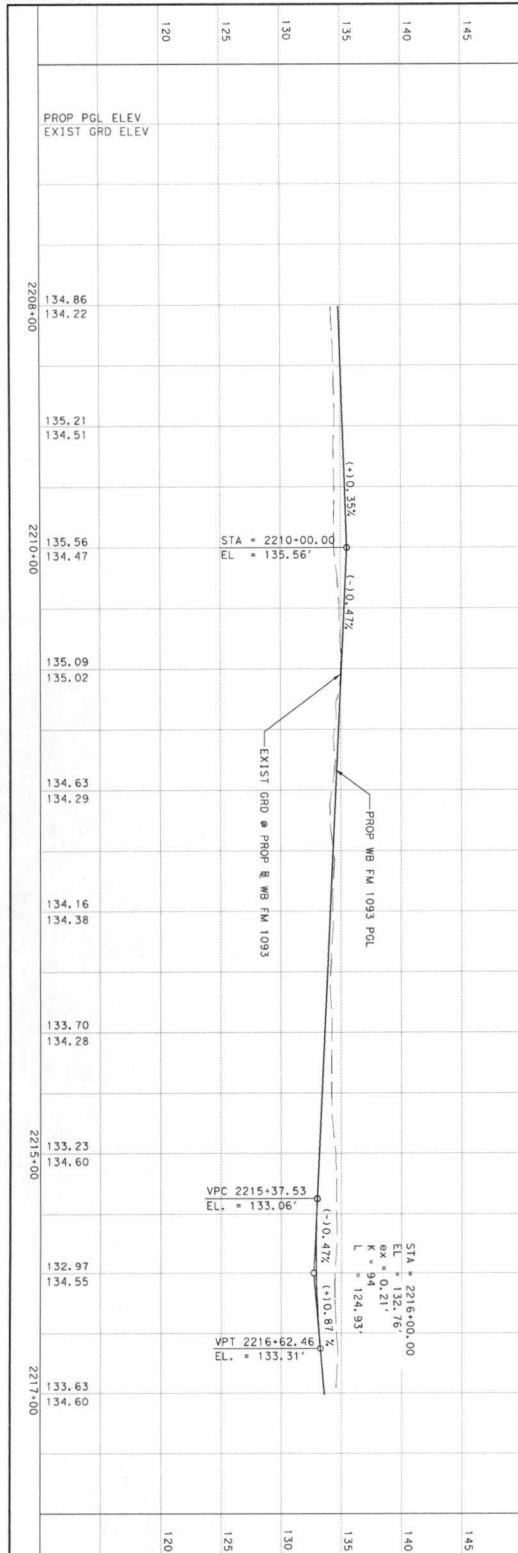
**Texas Department of Transportation**

**FM 1093 WESTPARK EXTENSION**  
ROADWAY PLAN & PROFILE  
EASTBOUND FM 1093  
STA 1208+00 TO STA 1217+00

DESIGNED BY: JR      DRAWN BY: JJ  
CHECKED BY: MJK      CHECKED BY: MH

COUNTY:      SHEET NO. 1  
FORT BEND: 0543 02 063, ETCI FM 1093      SHEET NO. 1137





DESIGNED BY: JR	DRAWN BY: JI
CHECKED BY: MJK	CHECKED BY: MH
COUNTY: CONT	JOB: HWY NO.
FORT BEND 0543	02 0633, ETC FM 1093
SHEET 2 OF 13	

**THE STATE OF TEXAS**  
 DEPARTMENT OF TRANSPORTATION  
 TEXAS HIGHWAY DEPARTMENT  
 MARY A. HOUBRANT  
 COMMISSIONER  
 FEBRUARY 28, 2017  
 PROJECT NO. 88202  
 PROJECT LOCATION: WESTPARK TOLLWAY  
 THE SEAL APPEARING ON THIS SHEET IS AUTHORIZED BY MARY A. HOUBRANT, COMMISSIONER, FEBRUARY 28, 2017.

**DANNENBAUM ENGINEERING CORPORATION**  
 3100 WEST ALAMOSA HOUSTON, TX 77066 (713) 282-8193  
 TEXAS Department of Transportation

ROADWAY PLAN & PROFILE  
 WESTBOUND FM 1093  
 STA 2208+00 TO STA 2217+00  
 FM 1093 WESTPARK EXTENSION

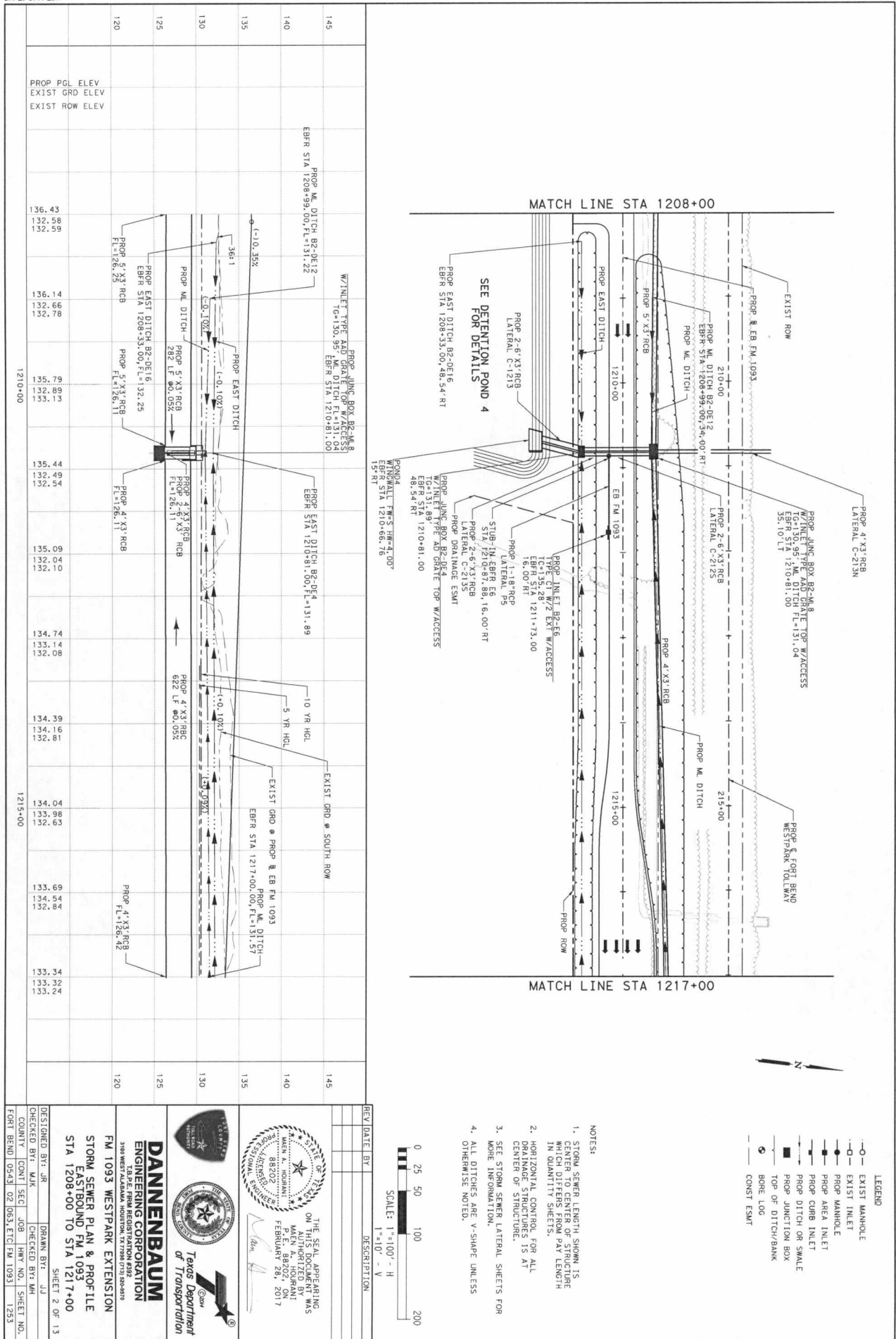
REV DATE BY DESCRIPTION  
 \_\_\_\_\_  
 \_\_\_\_\_  
 \_\_\_\_\_

NOTES:  
 1. ALL DIMENSIONS ARE TO FACE UNLESS OTHERWISE NOTED.  
 2. SEE TYPICAL SECTION SHEETS FOR LIMITS OF CONSTRUCTION.

SCALE: 1"=100' - H  
 1"=10' - V  
 0 25 50 100 200

**LEGEND**  
 (A) 12" CRCP  
 (B) 1" ASB  
 (C) 6" CEMENT TREATED BASE  
 (D) 6" LTS  
 (E) 9" CRCP  
 (F) RAIL (TY SSTR) W/DRAIN SLOTS  
 (G) RAIL (TY SSTR)  
 (H) RAIL (TY SSTR) (42") (TY 1)  
 (I) METAL BEAM GIARD FENCE  
 (J) 2" PVC CONDUIT (SCPD 80)  
 (K) MONO CURB (TYPE 1)  
 (L) MONO CURB (TYPE 11)  
 (M) 4" RIPRAP (CL B)  
 (N) REINFORCED VOLUME  
 (O) RETAINING WALL  
 (P) DRILL SEED (PERM) (WARM OR COOL)  
 (Q) BLOCK SOD (BERMUDA)  
 (R) 4" TOPSOIL  
 (S) 4" SIDEWALK (5')  
 (T) PROPOSED LANE  
 (U) EXISTING LANE  
 (X) TYPICAL SECTION





STATION	PROP PGL ELEV	EXIST GRD ELEV	EXIST ROW ELEV
1210+00	136.43	132.58	132.59
	136.14	132.66	132.78
	135.79	132.81	132.91
	135.44	132.49	132.54
	135.09	132.04	132.10
	134.74	133.14	132.08
	134.39	134.16	132.81
1215+00	134.04	133.98	132.63
	133.69	134.53	132.52
	133.34	133.32	133.24

**REVISIONS**

NO.	DATE	BY	DESCRIPTION

**NOTES:**

- STORM SEWER LENGTH SHOWN IS CENTER TO CENTER OF STRUCTURE WHICH DIFFERS FROM PAY LENGTH IN QUANTITY SHEETS.
- HORIZONTAL CONTROL FOR ALL DRAINAGE STRUCTURES IS AT CENTER OF STRUCTURE.
- SEE STORM SEWER LATERAL SHEETS FOR MORE INFORMATION.
- ALL DITCHES ARE V-SHAPE UNLESS OTHERWISE NOTED.

**LEGEND**

- EXIST MANHOLE
- EXIST INLET
- PROP MANHOLE
- PROP AREA INLET
- PROP CURB INLET
- PROP DITCH OR SWALE
- PROP JUNCTION BOX
- TOP OF DITCH/BANK
- BORE LOG
- CONST ESMAT

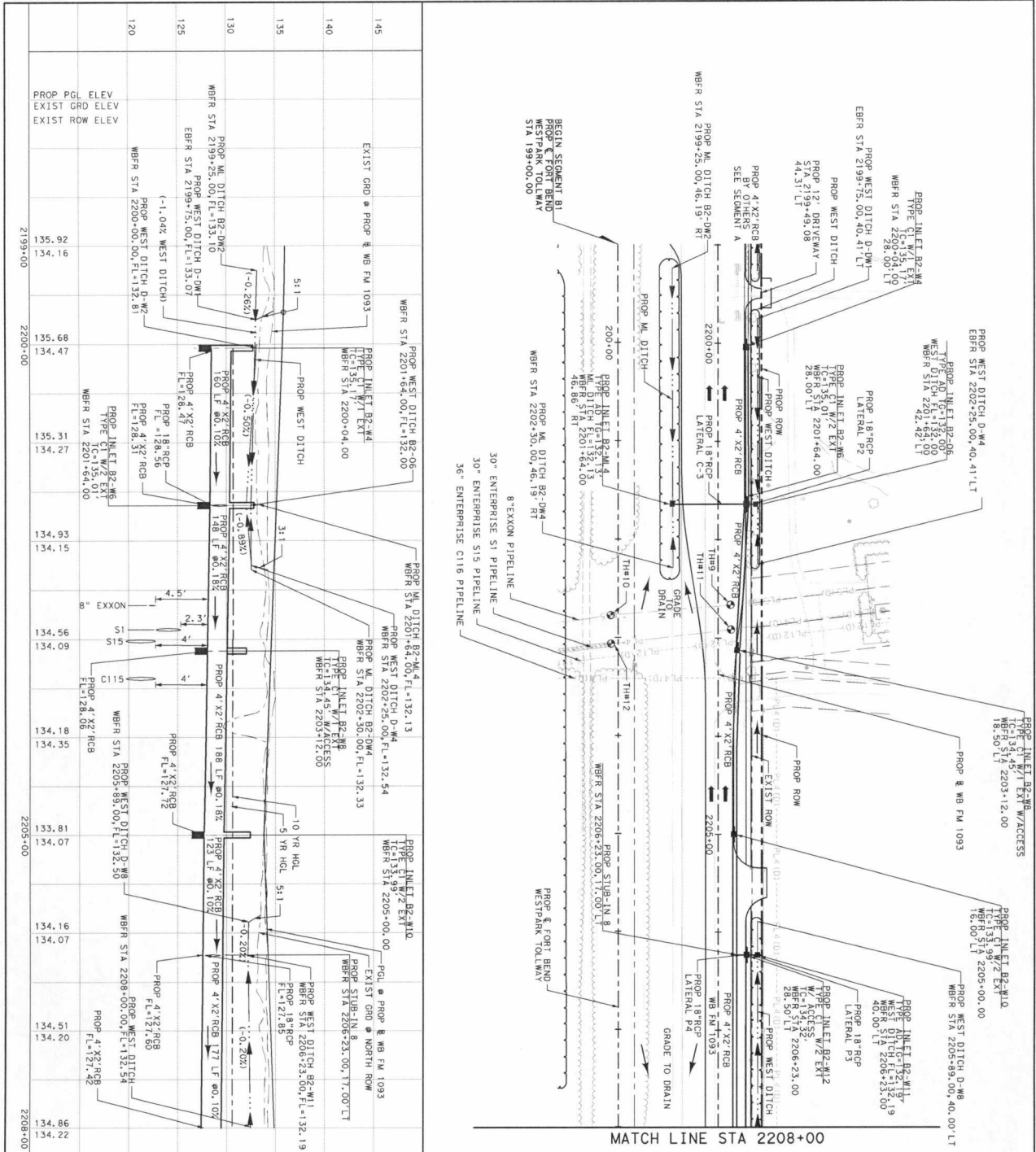
**SCALE:** 1"=100' - H  
1"=10' - V

**THE STATE OF TEXAS**  
**DEPARTMENT OF TRANSPORTATION**  
 ON THE SEAL APPEARING  
 HEREIN IS AUTHORIZED BY  
 MAKEN A. HOUBANT  
 FEBRUARY 28, 2017

**DANNENBAUM**  
**ENGINEERING CORPORATION**  
 13405 WEST ALAMOSA HOUSTON, TEXAS 77060 (713) 880-8191

**FM 1093 WESTPARK EXTENSION**  
**STORM SEWER PLAN & PROFILE**  
**EASTBOUND FM 1093 TO STA 1217+00**  
**STA 1208+00 TO STA 1217+00**

SHEET 2 OF 13  
 DESIGNED BY: JR    DRAWN BY: JJ  
 CHECKED BY: MKX    JOB: HWY NO.    SHEET NO.  
 COUNTY:    SEC:    JOB:    HWY NO.    SHEET NO.  
 FORT BEND 0543 02 0633 ETC FM 1093 1253



**MATCH LINE STA 2208+00**

**LEGEND**

- EXIST MANHOLE
- EXIST INLET
- PROP MANHOLE
- PROP AREA INLET
- PROP CURB INLET
- PROP DITCH OR SWALE
- PROP JUNCTION BOX
- TOP OF DITCH/BANK
- BONE LOC
- CONST ESMAT

**NOTES:**

1. STORM SEWER LENGTH SHOWN IS THE LENGTH OF THE PIPE WHICH DIFFERS FROM PIPE LENGTH IN QUANTITY SHEETS.
2. HORIZONTAL CONTROL FOR ALL DRAINAGE STRUCTURES IS AT CENTER OF STRUCTURE.
3. SEE STORM SEWER LATERAL SHEETS FOR MORE INFORMATION.
4. ALL DITCHES ARE V-SHAPE UNLESS OTHERWISE NOTED.

0 25 50 100 200

SCALE: 1"=100' - H  
1"=10' - V

REV. DATE BY DESCRIPTION

--	--	--	--	--	--	--	--

**DANNENBAUM ENGINEERING CORPORATION**  
2810 WEST ALABAMA, HOUSTON, TX 77098 (713) 226-8193

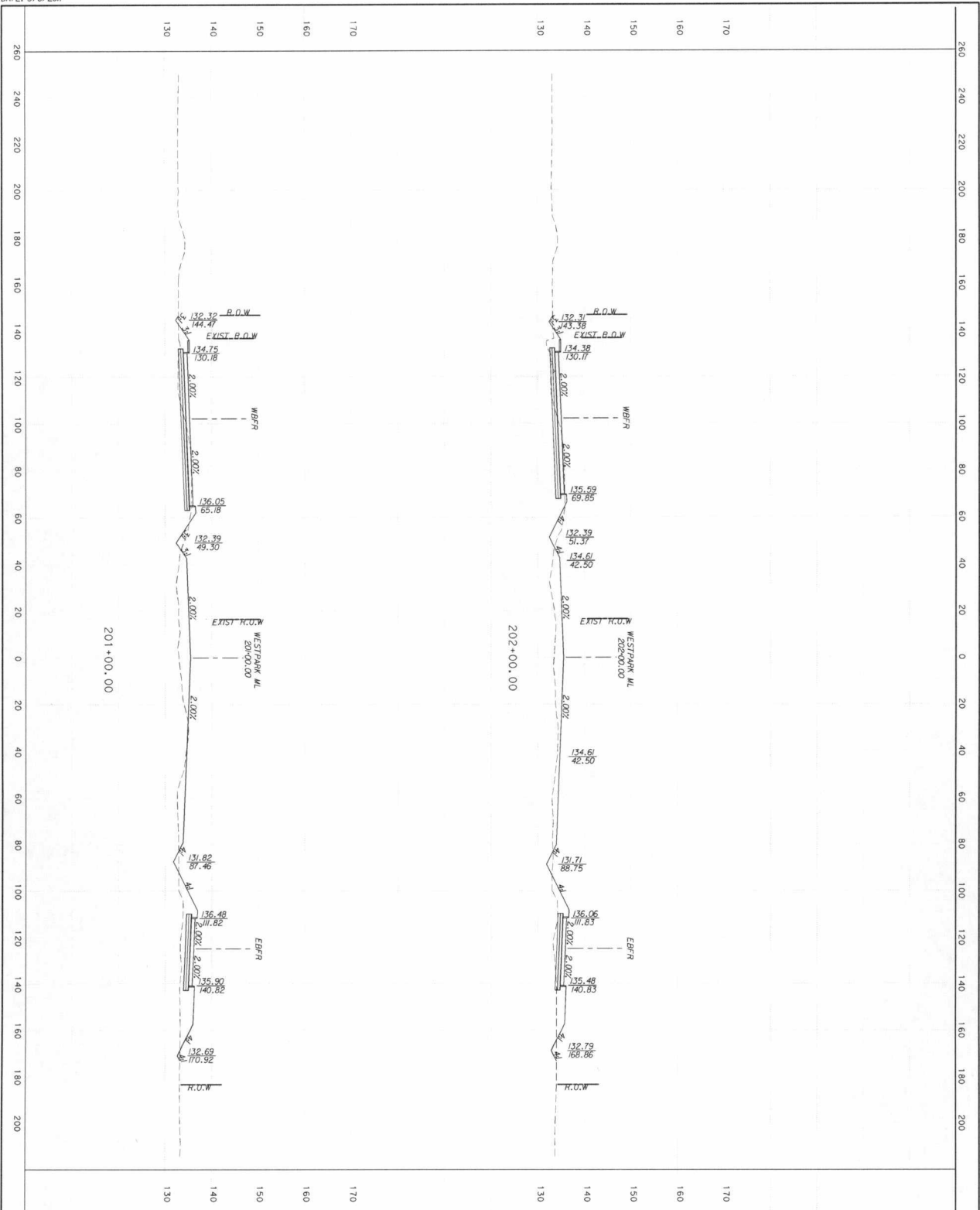
**THE GEOLOGICAL ENGINEERING BOARD OF TEXAS**  
ONLINE AUTHORIZED BY MRS. MALEN A. HOUBRANT  
FEBRUARY 28, 2017

**Storm Sewer Plan & Profile**  
FM 1093 WESTPARK EXTENSION  
STA 2198+99.09 TO STA 2208+00

SHEET 1 OF 13

DESIGNED BY: JR      DRAWN BY: JJ  
CHECKED BY: MJK      CHECKED BY: MH  
COUNTY:      JOB:      HWY NO.:      SHEET NO.:  
FORT BEND: 0543 02 063, ETC: FM 1093      1265



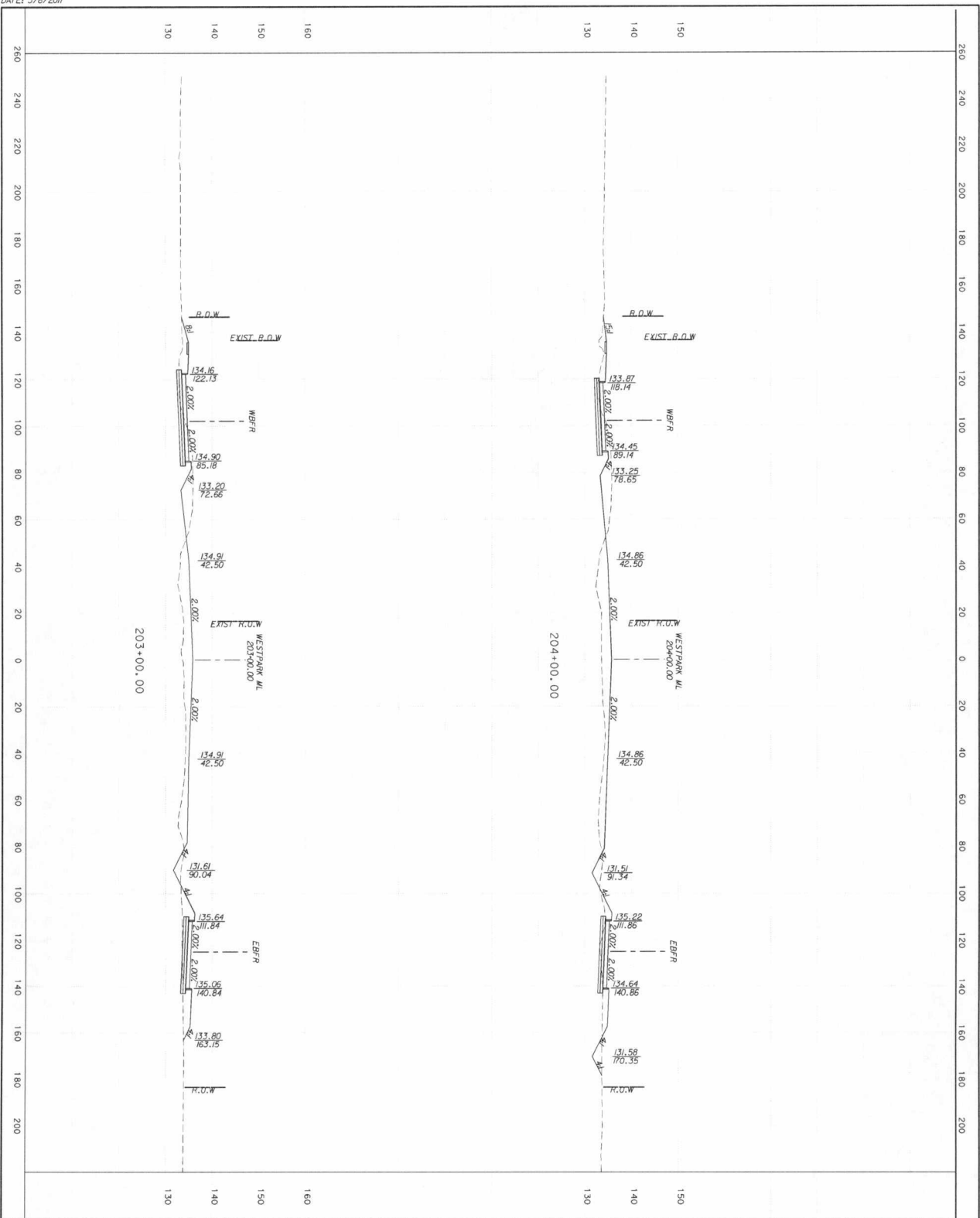


DESIGNED BY: NA | DRAWN BY: NA  
 CHECKED BY: MH | SHEET NO. 2  
 COUNTY: [ ] | SEC: [ ] | JOB: [ ] | HAY NO.: [ ]  
 FORT BEND 05431 02 | [ ] | FM 1093

**DANNENBAUM**  
 ENGINEERING CORPORATION  
 300 WEST ALABAMA, HOUSTON, TX 77002 (713) 282-8170  
 FM 1093 WESTPARK EXTENSION  
 DESIGN CROSS SECTIONS

REV DATE | BY | DESCRIPTION


SCALE: 1"=40' - H  
 1"=20' - V



**DESIGN CROSS SECTIONS**

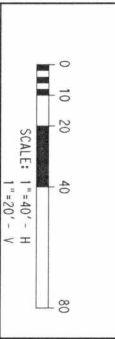
**FM 1093 WESTPARK EXTENSION**

**DANNENBAUM ENGINEERING CORPORATION**  
 3100 WEST ALABAMA HOUSTON, TX 77098 (713) 858-8193  
 T.A.P.E. FIRM REGISTRATION #932

**Texas Department of Transportation**

DESIGNED BY: NA | DRAWN BY: NA  
 CHECKED BY: MH | SHEET NO. 3  
 COUNTY: TARRANT | JOB: HWY NO. 1093  
 FORT BEND 0543 02 | DATE: 03/11/07

REV	DATE	BY	DESCRIPTION



**SHEET 3 OF 23**

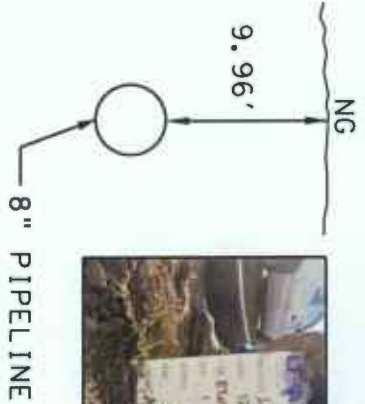




SURFACE ELEVATION: 132.75  
 TOP OF UTILITY: 122.79  
 PAVEMENT THICKNESS AND TYPE: NG

TH#: 9  
 DATE: 12-6-12

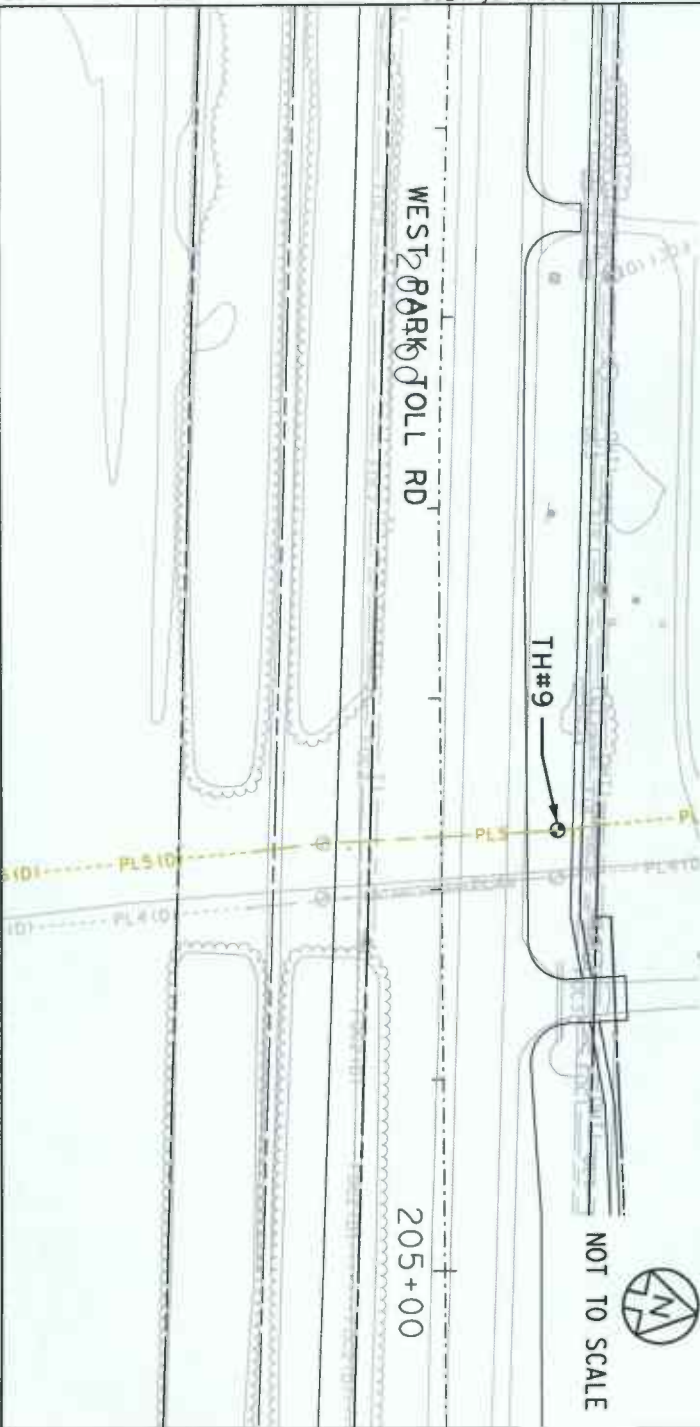
PROJECT NAME: WEST PARK TOLL ROAD  
 PROJECT NO: SUE 12-104-02  
 OWNER: DANNENBAUM  
 CSJ NO: -  
 LOCATION: WEST PARK TOLL RD  
 CITY, COUNTY: HOUSTON, HARRIS



SOIL CONDITIONS: CLAY  
 UTILITY OWNER: EXXON  
 UTILITY TYPE: PIPELINE  
 UTILITY SIZE: 8"  
 UTILITY MATERIAL: STEEL

REFERENCE PLAN SHEET: OF

COORDINATES: N 13814295.67 E 2960513.80 STA: 202+70 OFFSET: 60' LT



JOSEPH A. MURPHY, PE  
 DATE: 1/3/2013

BM: 1093-017 CP

BM: 1093-005 CP

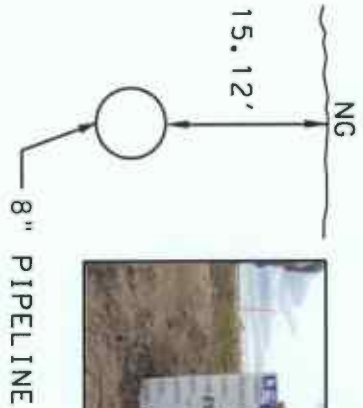
LINA T. RAMEY & ASSOCIATES, INC  
 TBPE FIRM #782



SURFACE ELEVATION: 133.75  
 TOP OF UTILITY: 118.63  
 PAVEMENT THICKNESS AND TYPE: NG

TH#: 10  
 DATE: 12-7-12

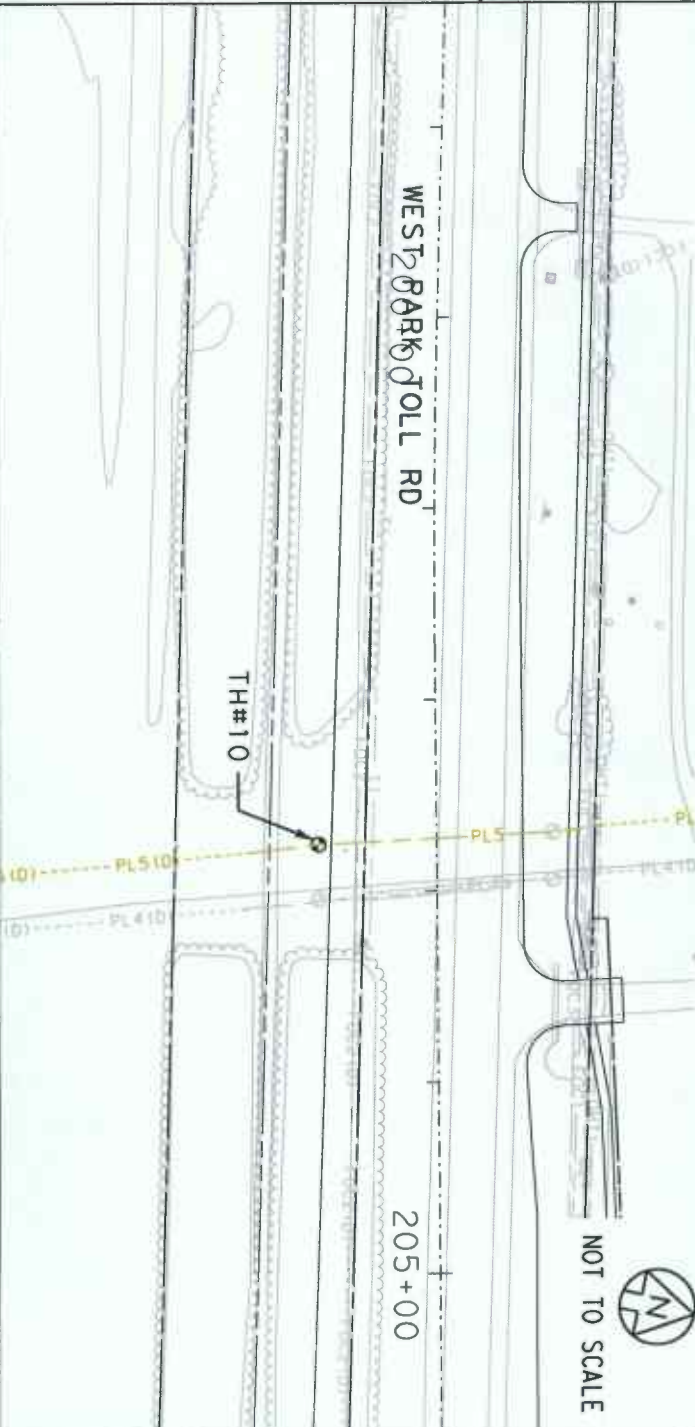
PROJECT NAME: WEST PARK TOLL ROAD  
 PROJECT No: SUE 12-104-02  
 OWNER: DANNENBAUM  
 CSJ NO: -  
 LOCATION: WEST PARK TOLL RD  
 CITY, COUNTY: HOUSTON, HARRIS



SOIL CONDITIONS: CLAY  
 UTILITY OWNER: EXXON  
 UTILITY TYPE: PIPELINE  
 UTILITY SIZE: 8"  
 UTILITY MATERIAL: STEEL

REFERENCE PLAN SHEET: OF

COORDINATES: N 13814175.36 E 2960538.60 STA: 202+74 OFFSET: 60' RT



BM: 1093-017 CP

BM: 1093-005 CP



JOSEPH A. MURPHY, PE  
 DATE: 1/3/2013

LINA T. RAMEY & ASSOCIATES, INC  
 TBPE FIRM #782

## RIGHT-OF-WAY RESTRICTIONS & REQUIREMENTS

---

In a continuing effort to provide a safe environment for persons working on or near pipelines operated by ExxonMobil Pipeline Company (EMPCo), the following restrictions will apply to all work. Deviations from these restrictions will not be allowed without the express written consent of EMPCo. EMPCo operates its pipelines in accordance with the regulations of the U.S. Department of Transportation and other state and local agencies and will enforce any restrictions necessary to protect the pipelines, properties, and safety of the public.

Detailed plans (plan and profile) for proposed construction must be submitted to ExxonMobil Pipeline Company (EMPCo) for review and approval to determine to what extent, if any, the pipeline right-of-way will be affected by the proposed construction or development. See submission addresses below.

These restrictions apply only to EMPCo operated pipelines. Other ExxonMobil affiliates should be contacted to determine requirements for their rights-of-way.

### GENERAL RESTRICTIONS & REQUIREMENTS

1. In accordance with law, constructors must contact the appropriate ONE CALL system(s) prior to work and comply with all applicable laws and regulations.
2. No work may commence in or around EMPCo's right of way until an EMPCo representative has authorized it to begin. Notice of desired work start date should be given to EMPCo a minimum of 72 hours in advance.
3. A Third Party Excavation Safe Work Checklist should be signed each day prior to beginning work on EMPCo's right of way.
4. If it is determined that your project impacts EMPCo's facilities a non-refundable advance fee may be required to conduct preliminary engineering design work. Any work performed by EMPCo to remedy such impacts will be entirely at the requestor's expense, which will first require the full execution of EMPCo's standard Reimbursement Agreement. Any necessary inspection, protection, lowering, adjustment, casing, re-coating, and/or relocation of the pipelines will not be scheduled until: (A) all prerequisite data is compiled; (B) the appropriate agreements are executed; and (C) sufficient funds are received. It is EMPCo's minimum practice to inspect and recondition the pipeline(s) at proposed driveway, roadway or railroad crossings, the costs for which will be borne by the developer or owner.
5. EMPCo's right of way should not be used as temporary workspace (which includes its use for the staging, storage or laydown of equipment, materials or spoil) without proper approval from EMPCo.
6. No encroachments of any kind, including but in no way limited to signs, monuments, buildings, parking lots, structures, patios, decks, slabs, trees, shrubs, manholes, swimming pools, wells, leach beds, septic systems, cesspools, impoundments or large debris (such as cars, boats, trailers, tanks, scrap metal or boulders) shall be located within the pipeline right of way. The intention of this restriction is to maintain an unobstructed right of way.
7. A driveway, roadway, or railroad may be allowed to cross the right-of-way perpendicular, and will require an agreement to be signed by the party responsible for the crossing.
8. Any change in the surface grade or elevation over or along the pipeline(s) and right-of-way must be approved in advance.

9. Blasting activities within 500 feet of an EMPCo pipeline will require an approved blasting plan in advance.
10. Any crossings of EMPCo's pipelines with vehicles or heavy equipment shall be approved by EMPCo and may require ramping, matting or air bridging at requestor's expense. An EMPCo inspector should be present when temporary materials are installed and removed on EMPCo right of way.
11. The constructor shall assume full liability for any damages to EMPCo facilities due to construction /excavation activities. Be advised that our pipelines are cathodically protected and may have an effect on utility lines that are made of electrically conductive material

## **EXCAVATION/CONSTRUCTION RESTRICTIONS & REQUIREMENTS**

12. No holes are to be bored or excavated within the boundaries of the right of way without prior approval of EMPCo.
13. All heavy equipment will have a spotter with it at all times while working within 10 feet of EMPCo's pipeline or on EMPCo's right of way.
14. The excavator shall install a bar across the teeth of the bucket to be used during excavation.
15. Excavation to initially expose the pipeline shall be parallel with the pipeline.
16. Mechanical excavation will cease once the earth has been removed to within (24") twenty-four inches of EMPCo pipeline, appurtenances and at all valve/stopples sites until exposed.
17. Shovels or other soft digging techniques will be used to manually clean the area above and below the line. After the line has been initially located, the line shall be kept visible to the equipment operator during the excavation process.
18. No excavations shall be made on land adjacent to the pipeline that will in anyway impair or withdraw the lateral support and cause any subsidence or damage to the pipeline.
19. Driving of sheet piling or any other vibration inducing activities in the vicinity of EMPCo Right of Way must be reviewed and approved by EMPCo.
20. All backfill on EMPCo's right of way shall be approved by EMPCo's on-site inspector.
21. If EMPCo's line is exposed during the excavation, the excavation will be made safe for entry and left open until EMPCo installs test leads or performs other visual inspection that may be required.
22. Constructor shall abide by all State & Federal Safety Rules and Regulations and shall operate equipment that is in good working condition and in a manner that is conducive to a safe working environment while working in or around EMPCo's facilities. An ExxonMobil representative has the authority to suspend all excavation/construction activities in and around EMPCo facilities if the equipment operator appears to be unqualified or equipment maintenance is not in accordance with applicable regulations.

## PIPELINE & UTILITY CROSSINGS

23. All pipelines, utility lines and other underground facilities constructed across EMPCo facilities shall cross the pipeline easement at an angle as close to 90 degrees as is possible but not less than 45 degrees, must be installed under the pipelines with a minimum vertical separation of 24 inches between structures, and installed in a manner acceptable to EMPCo's on-site representative. If the installer elects to install its pipelines/utilities across EMPCo's easement by any method of boring, then the installer at the request of EMPCo's representative, shall verify the vertical separation between EMPCo's facilities and the installer's pipelines/utilities.(See Bore Crossings)
24. An approved crossing ABOVE an EMPCo pipeline will need to clear EMPCo's pipeline by 24 inches and require a crossing agreement to be signed by the company responsible for that crossing.
25. When approved by EMPCo, all electrical, fiber optic, and communications cables crossing above an EMPCo pipeline should be cased across the width of EMPCo's right of way and covered with concrete 6" to 8" thick and a minimum width of 6 inches on each side and above the conduit.
26. Permanent aboveground markers identifying the crossing pipeline or utility shall be installed and maintained at the limits of EMPCo's right of way and/or at the crossing.
27. If it is impractical to install and maintain aboveground markers due to the crossing location, plastic marker tape shall be installed below cultivation level and over EMPCo's pipeline, extending the width of the right of way.

## BORE CROSSINGS

28. Bored crossings without a wire guide or with a clearance of 10' or less will require the installation of peepholes on the incoming sides of EMPCo's pipeline, at the point of intersection as to view the drill stem clearance prior to crossing.

## HYDRO-VAC EXCAVATION

29. Hydro-Excavation (Hydro-Vac) may be required in some situations to reduce the risk of damage to a pipeline if so deemed by EMPCo.
30. Grounding of the vacuum truck and wand is required and should be tested; downwind venting of the vacuum truck is required.
31. The water wand tip is to be an oscillation type (circular pattern) to prevent a concentrated water stream; stream nozzles are not allowed. The vacuum wand tip must have a neoprene or equivalent tip to prevent damage to the pipeline coating and surrounding structures.
32. If the excavation site is suspected to contain hydrocarbon-impacted soil, a plan must be developed for testing and disposal of soil/water slurry (e.g., lined roll-off bin.) at requestor's expense.

## FENCE POST/UTILITY POLES

33. Fences may be allowed to cross EMPCo's easement, but will not be allowed along and within EMPCo's easement. Fence posts shall not be placed within 4 feet horizontally of the pipeline(s). Fences should not be installed in manner that would obstruct EMPCo's line of sight or access to EMPCo's facilities. Flag poles, Utility poles and guy wires shall not be placed within EMPCo's right of way or within 8 feet horizontally of EMPCo's pipeline(s).



- 34. Overhead electrical or telephone lines shall be installed so that a minimum of 20 feet vertical clearance is maintained between the lowest point of the overhead crossing and the natural ground level above EMPCo's pipeline.

**OFFSHORE/OPEN WATER CROSSINGS**

- 35. EMPCo should be notified of any crossings of EMPCo pipelines located offshore or in open water. Upon notification of a proposed offshore or open water crossing an EMPCo representative will inform you of the crossing requirements.

**NOTIFICATIONS**

All improvement, construction, or encroachment notifications and/or requests for information pertaining to assets operated by ExxonMobil Pipeline Company must be directed, in writing, to the appropriate address noted below:

Requests should include:

- 1. A brief description of the project or work to be performed
- 2. Appropriate vicinity map page(s) and coordinates
- 3. Three (3) copies of pertinent plan and profile drawings
- 4. Estimated timing of your project or special timing requirements
- 5. A contact name, company name, mailing address, and telephone number

Once received, your request will be logged, researched and responded to as soon as possible (minimum 45 days). Large requests for information may require substantially more time. Inclusion of all of the above information will help to expedite your request.

**Submission Address by Area**

State	Company	Area	Address
MT	ExxonMobil Pipeline Company	All	ROW & Claims: ENCROACHMENTS 22777 Springwoods Village Parkway E3.5A.552 Spring, TX 77389 Phone (406) 670-3979
AR, IL, MA, MO, RI, TN, IN, MI, MN, OK, CA, TX	Mobil Pipe Line Company ExxonMobil Pipe Line Company	All All	ROW & Claims: ENCROACHMENTS 22777 Springwoods Village Parkway E3.5A.552 Spring, TX 77389 Phone (281) 922-2024
LA	ExxonMobil Pipeline Company	All	ROW & Claims: ENCROACHMENTS 108 Business Park Avenue, Suite E Denham Springs, LA 70726 Phone (225) 715-9381

# CERTIFICATE OF INTERESTED PARTIES

FORM 1295

1 of 1

Complete Nos. 1 - 4 and 6 if there are interested parties.  
Complete Nos. 1, 2, 3, 5, and 6 if there are no interested parties.

## OFFICE USE ONLY CERTIFICATION OF FILING

1 Name of business entity filing form, and the city, state and country of the business entity's place of business.

ExxonMobil Pipeline Company  
Spring, TX United States

Certificate Number:  
2017-286031

Date Filed:  
11/20/2017

2 Name of governmental entity or state agency that is a party to the contract for which the form is being filed.

Fort Bend County

Date Acknowledged:

3 Provide the identification number used by the governmental entity or state agency to track or identify the contract, and provide a description of the services, goods, or other property to be provided under the contract.

23381  
23381- 11/20/17 - Utility Relocation regarding FM 1093/Westpark, Mobility Bond Project No. 748

4	Name of Interested Party	City, State, Country (place of business)	Nature of interest (check applicable)	
			Controlling	Intermediary
	Exxon Pipeline Holdings, Inc.	Spring, TX United States	X	

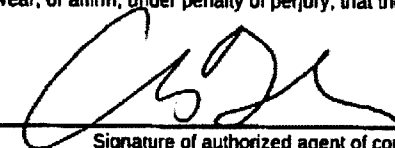
5 Check only if there is NO interested party.

### 6 AFFIDAVIT

I swear, or affirm, under penalty of perjury, that the above disclosure is true and correct.



LAUREN ALLEN  
AFFIX NOTARY STAMP / SEAL ABOVE

*SLD*   
Signature of authorized agent of contracting business entity

Sworn to and subscribed before me, by the said Christopher Hinson, this the 29 day of November, 2017, to certify which, witness my hand and seal of office.

Lauren Allen Lauren Allen Right of Way & Claims Agent  
Signature of officer administering oath Printed name of officer administering oath Title of officer administering oath

# CERTIFICATE OF INTERESTED PARTIES

FORM 1295

1 of 1

Complete Nos. 1 - 4 and 6 if there are interested parties.  
Complete Nos. 1, 2, 3, 5, and 6 if there are no interested parties.

### OFFICE USE ONLY CERTIFICATION OF FILING

**1 Name of business entity filing form, and the city, state and country of the business entity's place of business.**  
ExxonMobil Pipeline Company  
Spring, TX United States

**Certificate Number:**  
2017-286031

**Date Filed:**  
11/20/2017

**2 Name of governmental entity or state agency that is a party to the contract for which the form is being filed.**  
Fort Bend County

**Date Acknowledged:**  
12/12/2017

**3 Provide the identification number used by the governmental entity or state agency to track or identify the contract, and provide a description of the services, goods, or other property to be provided under the contract.**

23381  
23381- 11/20/17 - Utility Relocation regarding FM 1093/Westpark, Mobility Bond Project No. 748

4	Name of Interested Party	City, State, Country (place of business)	Nature of interest (check applicable)	
			Controlling	Intermediary
	Exxon Pipeline Holdings, Inc.	Spring, TX United States	X	

**5 Check only if there is NO Interested Party.**

**6 AFFIDAVIT** I swear, or affirm, under penalty of perjury, that the above disclosure is true and correct.

\_\_\_\_\_  
Signature of authorized agent of contracting business entity

AFFIX NOTARY STAMP / SEAL ABOVE

Sworn to and subscribed before me, by the said \_\_\_\_\_, this the \_\_\_\_\_ day of \_\_\_\_\_, 20\_\_\_\_\_, to certify which, witness my hand and seal of office.

\_\_\_\_\_  
Signature of officer administering oath      Printed name of officer administering oath      Title of officer administering oath