



**REVIEW BY FORT BEND COUNTY
COMMISSIONERS COURT**

**Fort Bend County
Engineering Department**
301 Jackson Suite 401
Richmond, Texas 77469
281.633.7500
Permits@fortbendcountytexas.gov



Right of Way Permit



Commercial Driveway Permit

Permit No: 2017-16030

Applicant: MCI Metro Access Transmission Services, Corp./Verizon

Job Location Site: 13825 W Bellfort, Sugar Land, TX 77498

Bond No. **Date of Bond:** 5/1/2017 **Amount:** \$50,000.00

The above applicant came to make use of certain Fort Bend County property subject to, "The Order Regulating the Laying, Construction, Maintenance, and Repair of Buried Cables, Conduits, and Pole Lines, In, Under, Across or Along Roads, Streets, Highways, and Drainage Ditches in Fort Bend County, Texas, Under the Jurisdiction of the Commissioners Court of Fort Bend County, Texas," as passed by the Commissioners Court of Fort Bend County, Texas, of the Minutes of the Commissioners Court of Fort Bend County, Texas, to the extent that such order is not inconsistent with Chapter 181, Vernon's Texas Statutes and Codes Annotated.

Notes:

1. Evidence of review by the Commissioners Court must be kept on the job site and failure to do so constitutes grounds for job shutdown.
2. Written notices are required:
 - a. 48 hours in advance of construction start up, and
 - b. When construction is completed and ready for final inspection, submit notification to Permit Administrator thru MyGovernmentOnline.org portal.
3. This permit expires one (1) year from date of permit if construction has not commenced.

On this 24th day of October, 2017, Upon Motion of Commissioner Meyers, seconded by Commissioner Morales, duly put and carried, it is ORDERED, ADJUDGED AND DECREED that said notice of said above purpose is hereby acknowledged by the Commissioners Court of Fort Bend County, Texas, and that said notice be placed on record according to the regulation order thereof.

Signature

Presented to Commissioners Court and approved.

By: Charles O. Ay
for County Engineer

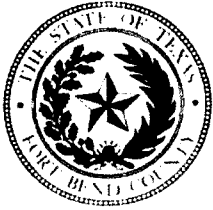
Date Recorded 10-30-2017 Comm. Court No. 18i

By: N/A

Drainage District Engineer/Manager

Clerk of Commissioners Court

By: Ainda Willis
Deputy



**PERMIT APPLICATION REVIEW FORM FOR
CABLE, CONDUIT, AND POLE LINE ACTIVITY
IN FORT BEND COUNTY**

**Fort Bend County
Engineering Department**
301 Jackson Suite 401
Richmond, Texas 77469
281.633.7500
Permits@fortbendcountytexas.gov

☒ Right of Way Permit
☐ Commercial Driveway Permit
Permit No: 2017-16030

The following "Notice of Proposed Cable, Conduit, and/or Pole Line activity in Fort Bend County" and accompanying attachments have been reviewed and the notice conforms to appropriate regulations set by Commissioner's Court of Fort Bend County, Texas.

(1) COMPLETE APPLICATION FORM:

- ☒ a. Name of road, street, and/or drainage ditch affected.
☒ b. Vicinity map showing course of directions
☒ c. Plans and specifications

(2) BOND:

- ☐ County Attorney, approval when applicable.
- ☒ Perpetual bond currently posted. Bond No: [REDACTED] Amount: \$50,000.00
- ☐ Performance bond submitted. Bond No: _____ Amount: _____
- ☐ Cashier's Check Check No: _____ Amount: _____

(3) DRAINAGE DISTRICT APPROVAL (WHEN APPLICABLE):

Drainage District Approval

Date

We have reviewed this project and agree it meets minimum requirements.

Charles O. Al

Permit Administrator

10/13/2017

Date

MCImetro
ACCESS TRANSMISSION SERVICES CORP.

OUTSIDE PLANT CONSTRUCTION
FIBER OPTIC CABLE ROUTE

PROJECT #: 1706ANBB.008
KINGSPPOINT TO ELLIS CREEK

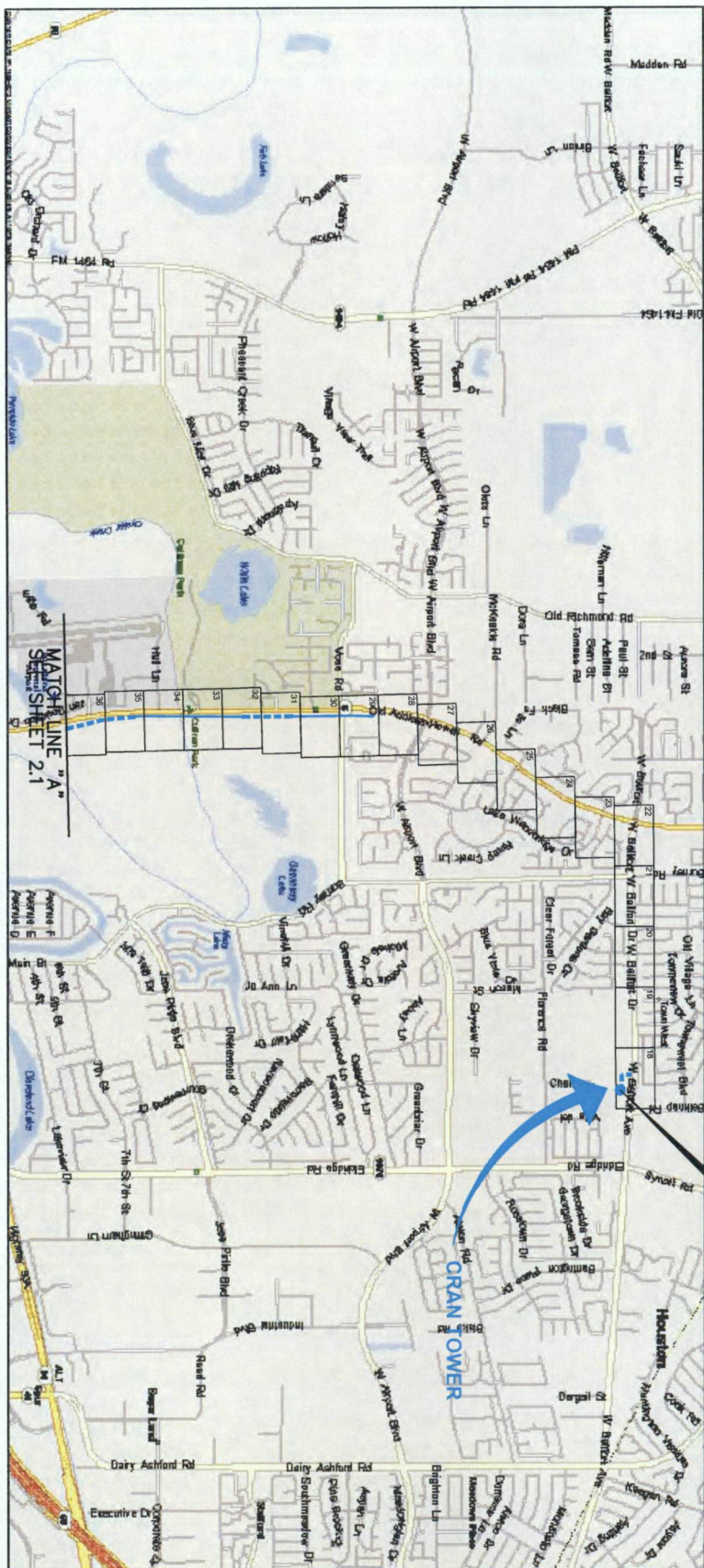
SUGAR LAND, TX
FORT BEND COUNTY

SITE CODE: HODATX
09/11/2017

PROJECT STATUS: CONSTRUCTION

LOCATION MAP

SUGAR LAND, TX
FORT BEND COUNTY



CRAN TOWER
HO 0012-108997-KINGSPONT
13825 W BELFORT AVE STE B
SUGARLAND, TX 77478

MAP LINE LEGEND

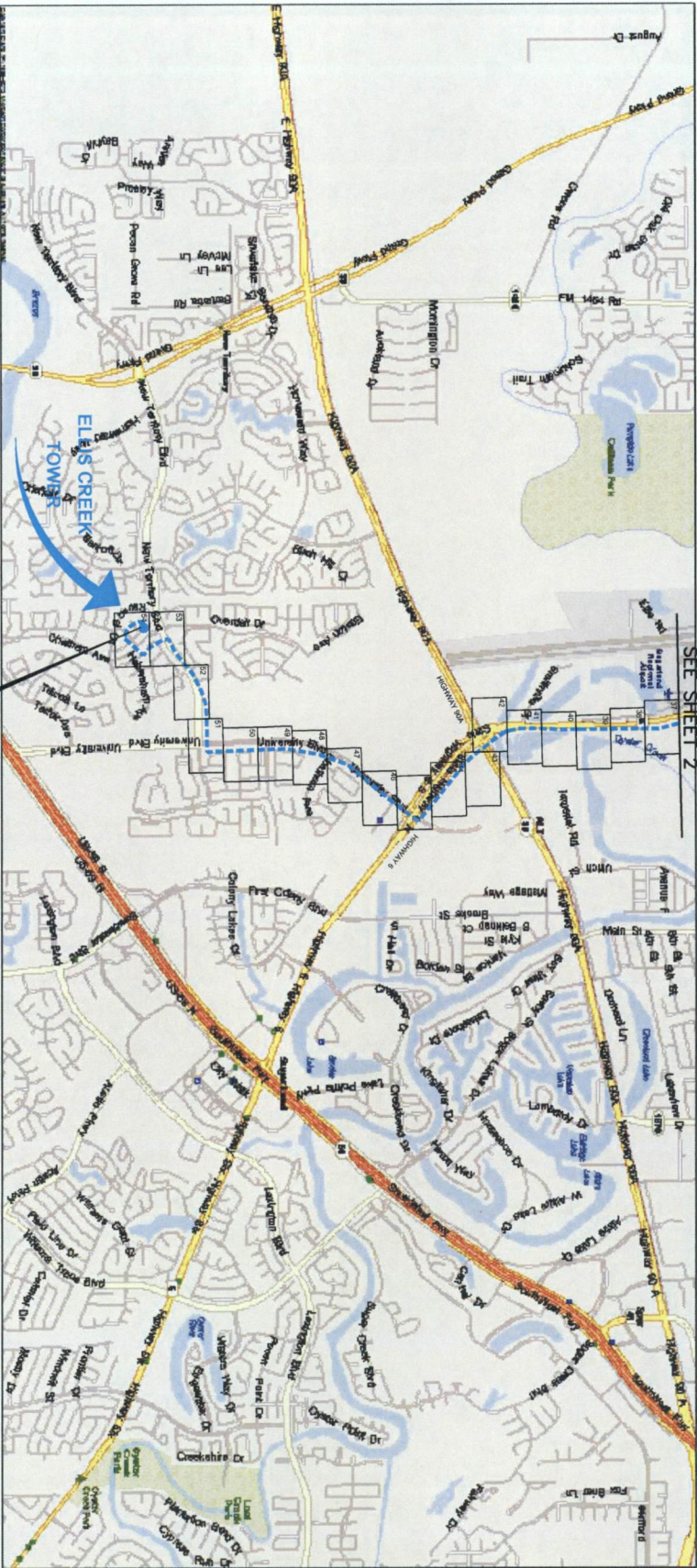
- PROPOSED BURIED CABLE
- PROPOSED AERIAL CABLE

PROJECT: 1706ANBB-008		KINGSPONT TO ELLIS CREEK		SUGAR LAND, TX 77478	
CLASSIFICATION NO.		QUANTITY			
DATE: 09/21/2017		ENGINEER: GXT		DRAWN BY: GXT	
REVISIONS		DATE		DESCRIPTION	
INITIAL					
SCALE		HORIZONTAL: NTS		VERTICAL: NTS	
MP		TO MP		SHEET 02 OF 54	
FILE: 1706ANBB-008-0100C-BLL.DWG					

Mcimetro
ACCESS TRANSMISSION SERVICES CORP.
OUTSIDE PLANT CONSTRUCTION
TITLE: FIBER OPTIC CABLE ROUTE
KINGSPONT TO ELLIS CREEK
SUGAR LAND, TX 77478
LOCATION MAP

LOCATION MAP SUGAR LAND, TX FORT BEND COUNTY

MATCH LINE "A"
SEE SHEET 2



ELLIS CREEK TOWER
RANVELL LANE
SUGARLAND, TX 77478

MAP LINE LEGEND

- PROPOSED BURIED CABLE
- PROPOSED AERIAL CABLE



PROJECT: 1206ANB3_008

KINGSPOINT TO ELLIS CREEK
SUGAR LAND, TX 77478

CLASSIFICATION NO. QUANTITY

McInetro
ACCESS TRANSMISSION SERVICES CORP.
OUTSIDE PLANT CONSTRUCTION
TITLE: FIBER OPTIC CABLE ROUTE
KINGSPOINT TO ELLIS CREEK
SUGAR LAND, TX 77478
LOCATION MAP

DATE: 09/11/2017

ENGINEER: GXT

DRAWN BY: GXT

REVISIONS

DATE DESCRIPTION INITIAL

SCALE

HORIZONTAL: NTS

VERTICAL: NTS

MP TO MP

SHEET 21 OF 54

FILE: 1206ANB3_008-012.dwg, 1206ANB3_008-012.dwg

FILE:17064118.008-0103AC.WEL.D

CONSTRUCTION NOTES

1. ALL CONDUIT WILL BE 4" ID SCHEDULE 40 CEE PVC DR BSR/OSP, MANUFACTURED SPLIT PVC DR SPLIT BSR/OSP, UNLESS SPECIFIED OTHERWISE.
2. CONTRACTOR IS RESPONSIBLE FOR LOCATING ALL UTILITIES 48 HOURS PRIOR TO CONSTRUCTION ACTIVITY. SEE CONTACT SHEET FOR CONTACT NAME AND TELEPHONE NUMBER.
3. ALL UNDERGROUND DISTURBANCES WHEN LOCATED WILL REQUIRE THE PLACEMENT OF A BURIED CABLE MARKER AND THE PLACEMENT OF 4" MANUFACTURED SPLIT PVC BSR/OSP OVER OR UNDER EACH DISTURBANCE.
4. SHOPPING MAY BE REQUIRED AND SHALL COMPLY TO OSHA STANDARDS.
5. ALL BURIED CONDUIT/CABLE WILL BE PLACED AT 42" MINIMUM COVER UNLESS SPECIFIED OTHERWISE ON THE CONSTRUCTION DRAWINGS.
6. MECHANICAL PROTECTION SHALL BE REQUIRED ANYTIME A 36" MINIMUM COVER IS UNOBTAINABLE UNLESS SPECIFIED OTHERWISE ON THE CONSTRUCTION DRAWINGS.
7. ALL 90 DEGREE BENDS IN CONDUIT CONSTRUCTION WILL BE A MINIMUM 36" RADIUS UNLESS SPECIFIED OTHERWISE. ALL SPLIT CONDUIT BENDS AND SOLID PVC BENDS SHALL BE 36" MINIMUM RADIUS. CONDUIT JOINTS SHALL BE PROTECTED WITH CONCRETE HOUSING, UNLESS SPECIFIED OTHERWISE.
8. OPERATIONS PERSONNEL TO BE CONTACTED BY THE CONTRACTOR 48 HOURS PRIOR TO CONSTRUCTION. SEE CONTACT SHEET FOR CONTACT NAME AND TELEPHONE NUMBER.
9. ALL STATIONING IS BASED ON AS-BUILT INFORMATION, THEREFORE SOME VARIANCE SHOULD BE ANTICIPATED. ADJUST AS NEEDED.
10. RAILROAD COMMUNICATION AND SIGNAL CABLES TO BE LOCATED PRIOR TO CONSTRUCTION ACTIVITY. RAILROAD TO BE GIVEN 48 HOURS NOTICE PRIOR TO CONSTRUCTION.
11. ALL BURIED CABLE MARKER POSTS AND HARDWARE PLACED AND/OR REMOVED ON ALL NEW AND EXISTING ROUTES SHALL BE IMPLEMENTED AS FOLLOWS:
 - A. ON THOSE ROUTES THAT ARE CONSIDERED TO BE IN A NORTH TO SOUTH GEOGRAPHICAL ORIENTATION, THE SOUTHERN-MOST SIGN AND POST SHOULD BE REMOVED.
 - B. FOR NEW ROUTES BEING CONSTRUCTED, ONE SIGN POST WILL BE PLACED AT THE NORTH END OF EACH HANDLE.
 - C. ON THOSE ROUTES THAT ARE CONSIDERED TO BE IN AN EAST TO WEST GEOGRAPHICAL ORIENTATION, THE WESTERN-MOST SIGN AND POST SHOULD BE REMOVED.
 - D. FOR NEW ROUTES BEING CONSTRUCTED, ONE SIGN POST WILL BE PLACED AT THE EAST END OF EACH HANDLE.

GENERAL NOTES

1. MCI COMPREHENSES THE FOLLOWING OPERATING ENTITIES:
 - MCI COMMUNICATIONS SERVICES, INC.
 - MCI TELEVISION SERVICES, INC.
 - MCI WIRELESS TRANSMISSION SERVICES, LLC
 - MCI WIRELESS TRANSMISSION SERVICES, INC.
 - MCI WIRELESS TRANSMISSION SERVICES OF MASSACHUSETTS, INC.
 - METROPOLITAN FIBER SYSTEMS OF NEW YORK, INC.
2. ALL WORK TO BE DONE WITH EXTREME CAUTION ! FIBER OPTIC CABLE IS CARRYING TRAFFIC AND LOSS OF SERVICE WILL RESULT IN LOSS OF REVENUE. CONTRACTOR SHALL NOT WORK IN A MANNER THAT MAY AFFECT TRAFFIC-CARRYING FACILITIES IN THE ABSENCE OF AN MCI EMPLOYEE OR CERTIFIED CONTRACTOR.
3. ALL WORK TO BE PERFORMED IN STRICT ACCORDANCE WITH THE APPLICABLE CODES OR REQUIREMENTS OF ANY REGULATING GOVERNMENTAL AGENCY, VERIZON BUSINESS, OR THE RIGHT-OF-WAY GRANTOR.
4. LOCATIONS OF SOME OF THE PHYSICAL FEATURES WERE OBTAINED FROM DATED RAILROAD VALUATION MAPS OR OTHER DRAWINGS, AND MAY BE AS SHOWN OR DERIVED IN THESE DRAWINGS.
5. UNDERGROUND UTILITIES HAVE BEEN PLOTTED FROM AVAILABLE RECORDS AND FIELD OBSERVATIONS, BUT ARE NOT NECESSARILY EXACT. THEREFORE, UTILITY LOCATIONS WILL BE VERIFIED AT LEAST 100 FEET IN ADVANCE OF TRENCHING OR PLOVING, SO THAT CHANGES IN CABLE PLACEMENT CAN BE MADE IN EVENT OF CONFLICTS.
6. ALL KNOWN BURIED OBSTRUCTIONS ARE SHOWN ON THE CONSTRUCTION DRAWINGS. ANY AND ALL OTHERS UNIDENTIFIED ARE ALSO THE RESPONSIBILITY OF THE CONTRACTOR TO LOCATE, PROTECT AND REPAIR, IF DAMAGED.
7. ANY AND ALL IMPROVEMENTS, SUCH AS ASPHALT OR CONCRETE PAVEMENT, CURBS, GUTTERS, WALKS, DRAINAGE DITCHES, EMBANKMENTS, SHROUBS, TREES, GRASS SOD, ETC., IF DAMAGED, SHALL BE RESTORED TO ORIGINAL OR BETTER CONDITION.
8. EQUIPMENT TYPES SPECIFIED HEREIN IN THE "BACKGROUND," (SWAMP PLOVING, ETC.) ARE SUGGESTIONS ONLY AND ARE NOT INTENDED AS REQUIREMENTS. CONTRACTOR WILL BE NOTIFIED AS TO EXCEPTIONS.

CLARIFICATION NOTES (CONTINUED)

- | | |
|---|--|
| JACK AND DRY BORE CONDUITS) | PLACE CONDUIT
PLACE HIGH DENSITY POLYETHYLENE (HDPE)
RICKY ADDER
SURFER BACKFILL ADDER
EXPLODE CONDUIT AND RELOCATE
EXPLODE CONDUIT AND RELOCATE
EXPLODE AND REPLACE/SUBSTITUTE
EXPLODE AND REMOVE CONDUIT (ABANDONED)
EXPLODE AND REMOVE CONDUIT
CONCRETE ENGAGE
REMOVE CONCRETE ENGAGEMENT
REMOVE CONCRETE CAP
PLACE HANDHOLE
REMOVE EXISTING HANDHOLE
RELOCATE HANDHOLE
REPLACE/SUBSTITUTE HANDHOLE
EXCAVATE SPlice PIT
PLACE MANHOLE
REMOVE EXISTING MANHOLE
RELOCATE PRECAST MANHOLE
REPLACE/SUBSTITUTE PRECAST MANHOLE
CONSTRUCT WALL
REMOVE AND RESTORE ASPHALT
REMOVE AND RESTORE CONCRETE
REMOVE AND RESTORE SIDEWALK
REMOVE AND RESTORE CURBING
ATTACH CONDUIT TO WALL OR STRUCTURE
DETACH CONDUIT FROM WALL OR STRUCTURE
CORE BORE
ATTACH PULL/SPLICE BOX TO WALL OR STRUCTURE |
| PULL CABLE | PULL THROUGH DUCT (INNERDUCT)
REMOVE CABLE FROM CONDUIT
REPOSITION ACTIVE CABLE STACK |
| DIRECT BURY CABLE | EXPLOSE DIRECT BURIED CABLE
EXPLOSE DIRECT BURIED CABLE AND RELOCATE
REMOVE AND DISPOSE OF CABLE
PLACE AERIAL CABLE
RELOCATE AERIAL CABLE
DELAISH AERIAL CABLE
RELAISH AERIAL CABLE
REMOVE AERIAL CABLE
PLACE PILE/POSH BRACE
REMOVE PILE/POSH BRACE |
| SETTING CONDUIT
EMBEDMENT PUD
DIRECTIONAL BORE | |
| WATER BURIED CABLE MARKERS AND SIGNS/ALCDM
PLACE BOLLARD PROTECTION SYSTEM AT EXISTING
HANDHOLES/MANHOLE
REMOVE BURIED CABLE MARKER POST/HARDWARE
REMOVE BURIED CABLE MARKER POST | |

PROJECT 1706AMNB, 008	
KINGSPONT 10 ELLIS CREEK	
SUGAR LAND, TX 77478	
CLARY LOCATION NO.	QUANTITY
<div>MCImetro ACCESS TRANSMISSION SERVICES CORP</div> <div>OUTSIDE PLANT CONSTRUCTION</div> <div>TITLE: FIBER OPTIC CABLE ROUTE</div> <div>KINGSPONT 10 ELLIS CREEK SUGAR LAND, TX 77478</div> <div>GENERAL CONTRACTOR: MCImetro</div>	
DATE: 09/11/2017	
ENGINEER: GXT	
DRAWN BY: GXT	
REVISIONS	
DATE	DESCRIPTION
-	-
<div>CHECKED BY: M. H. HARRIS, PROJECT ENGINEER DESIGNED BY: M. H. HARRIS, PROJECT ENGINEER DRAWN BY: GXT, PROJECT ENGINEER DATE: 09/11/2017 SCALE: AS SHOWN THIS DRAWING IS THE PROPERTY OF MCImetro AND IS NOT TO BE REPRODUCED OR TRANSMITTED IN ANY FORM OR BY ANY MEANS, ELECTRONIC OR MECHANICAL, INCLUDING PHOTOCOPYING, RECORDING, OR BY ANY INFORMATION STORAGE AND RETRIEVAL SYSTEM, WITHOUT PERMISSION IN WRITING FROM MCImetro.</div>	
SCALE	
HORIZONTAL: NTS	
VERTICAL: NTS	
MP	TO MP
SHEET 04	OF 54
FILE: 1706AMNB-008-0104C, RL: DWG	

UNION PACIFIC RAILROAD GENERAL NOTES

GENERAL NOTES

1. FIBER OPTIC INSTALLATION ON UNION PACIFIC RAILROAD SHALL CONFORM TO THE UNION PACIFIC MANUAL, "FIBER OPTIC ENGINEERING, CONSTRUCTION AND MAINTENANCE STANDARDS", LATEST EDITION.
2. ALL WORKERS ON RAILROAD PROPERTY MUST BE UNION PACIFIC RAILROAD SAFETY TRAINED AND WEAR RAILROAD APPROVED PERSONAL PROTECTIVE EQUIPMENT.
3. PRIOR TO ANY EXCAVATION ON UNION PACIFIC RIGHT OF WAY, IT IS MANDATORY TO CALL UNION PACIFIC'S CALL BEFORE YOU DIG NUMBER, 800-336-4103, TO ASCERTAIN IF ANY FIBER OPTIC CABLES EXIST IN THE PROJECT AREA. THIS MUST BE DONE A MINIMUM OF 48 HOURS PRIOR TO ANY CONSTRUCTION ACTIVITY. THIS IS IN ADDITION TO ANY STATE ONE-CALL NOTIFICATIONS.
4. DIRECTIONAL BORES MUST BE APPROVED PRIOR TO CONSTRUCTION.
5. TRACK BORES MUST BE CASED IF LESS THAN TEN FEET BELOW THE BASE OF THE RAIL. ALL MULTIPLE-DUCT BORES MUST BE CASED. THE CASING MUST EXTEND A MINIMUM OF 30 FEET FROM THE CENTERLINE OF THE NEAREST TRACK WHEN MEASURED AT RIGHT ANGLES TO THE TRACK.
6. NO EXCAVATION IS ALLOWED WITHIN 12 FEET OF ANY TRACK. ALL EXCAVATIONS MUST BE SHORED IN ACCORDANCE WITH OSHA STANDARDS. SHORING FOR EXCAVATIONS ON RAILROAD RIGHT-OF-WAY MUST BE APPROVED BY THE VP ENGINEERING.
7. BORE PITS ARE TO BE LOCATED A MINIMUM OF 30 FEET FROM THE CENTERLINE OF THE NEAREST TRACK WHERE POSSIBLE. BORE PITS ARE NOT ALLOWED IN THE CUT OR FILL SECTIONS OF THE ROADBED.
8. TRENCHES AND BORE PITS ARE TO BE FILLED OR FENCE-PROTECTED AT THE END OF EACH DAY.
9. EXCAVATIONS ARE TO BE FILLED AND COMPACTED TO MATCH NATURAL CONDITIONS OF THE SURROUNDING AREA.

GENERAL NOTES (CONTINUED)

10. DO NOT FOUl THE BALLAST. KEEP ALL DIRT AND OTHER FOREIGN MATERIALS OUT OF THE TRACK BALLAST SECTION.
11. THE RIGHT-OF-WAY SHALL BE RESTORED TO ITS ORIGINAL CONDITION OR BETTER, INCLUDING SEEDING WITH NATIVE GRASSES.
12. CABLE SHALL BE INSTALLED A MINIMUM OF 42" BELOW NATURAL GROUND. THIS DEPTH SHALL INCREASE TO 60" UNDER TRACKS (DRY BORE ONLY), CULVERTS AND DITCHES.
13. HANDHOLES, SPlice BOXES AND MANHOLES MUST BE DESIGNED FOR ASHTO H-20 LOADING AND MUST BE INSTALLED SO AS NOT TO CREATE A STUMBLING HAZARD.
14. MARKER POSTS MUST BE INSTALLED SO AS NOT TO CREATE STUMBLING OR IMPALING HAZARDS, OR IN A LOCATION THAT OBSTRUCTS RAILROAD OPERATIONS.
15. CREEK BEDS THAT HAVE BEEN PLOWED OR CUT MUST BE RESTORED AND PROTECTED BY RIP RAP OR OTHER RAILROAD APPROVED EROSION CONTROL PROCEDURES.
16. ANY DEVIATIONS FROM THE APPROVED PLANS MUST BE APPROVED BY THE UP CONSTRUCTION COORDINATOR ASSIGNED TO THE PROJECT. ALL CHANGES MUST BE RECORDED ON THE AS-BUILT PLANS.
17. THE CABLE MUST BE LOCATED ON THE FIELD SIDE OF THE RAILROAD FACILITIES.
18. INSTALLATIONS NEAR RAILROAD SIGNAL FACILITIES WILL REQUIRE COORDINATION THROUGH THE UP CONSTRUCTION COORDINATOR WITH THE UP SIGNAL DEPARTMENT. SIGNAL DEPARTMENT PERSONNEL WILL REMOVE AND REPLACE ALL GUY WIRES ATTACHED TO RAILROAD POLE LINES.

PROJECT: 1706ANBB 008		
KINGSPOINT TO ELLIS CREEK		
SUGAR LAND, TX 77478		
CLASSIFICATION NO.	QUANTITY	
DATE: 09/11/2017		
ENGINEER: GXT		
DRAWN BY: GXT		
REVISIONS		
DATE	DESCRIPTION	INITIAL
SCALE		
HORIZONTAL: NTS		
VERTICAL: NTS		
MP	TD	MP
SHEET 05	OF	54
FILE: E:\1706ANBB\008-012504c.dwg		

McInetro
ACCESS TRANSMISSION SERVICES CORP.
OUTSIDE PLANT CONSTRUCTION
TITLE: FIBER OPTIC CABLE ROUTE
KINGSPOINT TO ELLIS CREEK
SUGAR LAND, TX 77478
UNION PACIFIC RAILROAD GENERAL NOTES

MCI MCI Outside Plant FOCUS
Fiber Optic / Recovering System

- 1) The title of the program, F.O.C.U.S., an acronym for Fiber Optic Cable Uncovering System was selected to remind everyone involved with working near MCI's active fiber optic systems to focus on maintaining the facilities. If, during the course of the project, you notice any activity which may jeopardize the MCI OSP facilities, it is your duty to stop the work and see FOCUS.
 - 2) FOCUS rules must be followed on all MCI projects involving work on or near MCI OSP facilities. Safety is MCI's number one priority; everyone must refrain from unsafe and improper practices.
 - 3) Review of FOCUS is mandatory at every Pre-bid, Pre-construction, site meeting and daily on-site meeting. FOCUS discussion must include site-specific history, unique problems, facility configurations that may be encountered, and past errors. "Those who do not learn from history are doomed to repeat it." Do not let this happen to you.
 - 4) Any work near or requiring handling of MCI On-site Fiber facilities can only be performed with an MCI1 permit as a condition, representative present - THIS MEANS OUT OF HIS OR HER VEHICLE AND DIRECTLY MONITORING THE WORK. The representative must have a properly speaking cable locator or checked for accuracy every day prior to commencement of work (completion of line and depth marking to actual line and depth of the cable).
 - 5) MCI1 Permit and Portable Requirements.
 - Prior to any excavation, the MCI1 employee or contract representative must verify the initial location marks completed by MCI1 Operators. Do not use and locate marks completed by others! The MCI1 Operator/representative must locate the cable running line by marking at least one point in each direction. Locate feasible must then be completed with previous marks and the as-built.
 - If the proposed work involves digging or excavating within 1 feet of the cable, the cable route will be marked continuously with orange paint and supplemented by marker flags placed every 10 ft. The excavation contractor must provide the cable a minimum of every 30 ft. excavation contractor must provide all poleholes must be completed by hand digging or vacuum excavation (a minimum of every 15 ft. then expose the entire length of the cable by hand digging or vacuum excavation).
 - If the proposed work involves digging or excavating within 3 feet (but not closer than 1 feet) of the cable, the cable route will be marked continuously with orange paint and supplemented by marker flags placed every 10 ft. The excavation contractor must provide the cable a minimum of every 15 ft. placed every 10 ft. The excavation contractor must provide the cable a minimum of every 15 ft.
 - If the proposed work involves digging or excavating within 15 feet (but not closer than 3 feet) of the cable, the cable route will be marked continuously with orange paint and supplemented by marker flags placed every 10 ft. The excavation contractor must provide the cable a minimum of every 30 ft.
 - The cable will also be protected in any change in the running line of more than 1 ft. in any direction, anytime the accuracy of the electronic locate is questioned, or the marked running line does not match the as-builts.
 - 6) Enforcing Requirements:
 - No mechanical excavation within 3 ft. of OSP facilities will be allowed unless the facilities have first been properly located, protected, positively identified continuously exposed by hand digging, or vacuum excavation, and the facilities are clearly visible.
 - In addition, mechanical excavation within three feet of OSP facilities requires on-site prior approval from MCI's employee or contract representative.
 - 7) Please refer to the latest edition of the MCI OSP Handbook for additional details. Know it and follow it.
- release 1.0

MCI Outside Plant Construction General Requirements

- All Federal, State and local safety regulations must be followed without exception.
- Personal protective equipment appropriate for the specific work site shall be used at all times. At a minimum, hard hat, safety shoes/steel toed boots and fluorescent orange or green work vest are required upon entering any MCI work site.
- Use of intoxicants, drugs, inhalants or any other substances that may impair alertness are strictly prohibited.
- Contractors are NOT allowed to cut any cable. Cables scheduled for removal will be cut by MCI Operations personnel, and only after verification that all traffic has been off-loaded.
- Extreme caution must be used at all times when working on or near active cables. An MCI employee or contract representative must approve and be present prior to and during all cable handling activities.
- Tools and equipment specifically designed for the job at hand are required. USE THE PROPER TOOL FOR THE JOB.
- Conduct work involving active cables requires specialized tools specifically designed to access ducts with active cables.
- Protecting MCI facilities is EXTREMELY important, however, SAFETY regarding yourself and others is the most important part of any project.

[illegible]

SYMBOLS KEY	
EXISTING	PROPOSED
BURIED CABLE	STEEL MARKER AND SIGN-(A)
AERIAL CABLE	ALUMINUM HUB-STILE MARKER-(B)
SUBMARINE CABLE	FLAT MARKER-(C)
FOCUS CABLE	TUBULAR MARKER-(D)
DIRECT BURIED HOPE	MILE POST MARKER
PVC OR SPLIT PVC CONDUIT	NOTE: DASHED = NOT FOUND IN FIELD
BSP/GSP OR SPLIT BSP/GSP CONDUIT	PERMIT TRACKING FORM IDENTIFIER
STEEL CASING	ROCK PROBE (DEPTH AS INDICATED)
REMOVE AND RESTORE ASPHALT OR CONCRETE (WIDTH AS INDICATED)	UTILITY COVER DEPTH
CORE BORE	HANDHOLE, MANHOLE OR PULLBOX
JACK AND BORE	POLE
DIRECTIONAL BORE	ANCHOR ONLY
FUTURE CABLE	GUY ONLY
REMOVE CABLE TO BE REMOVED OR ABANDONED (SHOWN FOR HOPE)	OVERHEAD GUY (ARROW IN DIRECTION OF PULL)
AERIAL UTILITY (ELECTRIC)	ANCHOR AND GUY
UNDERGROUND UTILITY (TELEPHONE)	SIDEWALK ANCHOR AND GUY
MAIN TRACKS	FOREIGN ANCHOR AND GUY
AUXILIARY TRACKS	PUSH BRACE (EXISTING POLE)
CENTERLINE	ACCOUNT CODE CHANGE (BURIED TO AERIAL)
RIGHT-OF-WAY	BOND AND GROUND
EDGE OF PAVEMENT	CULVERT (SIZE AS INDICATED)
SIDEWALK	BRIDGE
DITCH LINE	WATER METER
TAX DISTRICT	GAS VALVE
CITY, COUNTY OR STATE BOUNDARY LINE	FIRE HYDRANT
PROPERTY LINE	RAILROAD SIGNAL CONTROL BOX
FENCE LINE	CAUTION NOTE
GUARDRAIL	
TOP OF SLOPE	
TOE OF SLOPE	

SYMBOLS KEY

FILE:1706ANIB.008-0

07

FILE:1706ANJB.008-0

CONSTRUCTION DETAILS

TYPICAL DETAIL A

CROSS SECTION OF PROPOSED HDPE

TYPICAL DETAIL B

CROSS SECTION OF PROPOSED HDPE

TYPICAL DETAIL C

CROSS SECTION OF PROPOSED HDPE

TYPICAL DETAIL D

TRENCH & PLACE CONDUIT
CITY OF SUGAR LAND & FORT BEND COUNTY

TYPICAL DETAIL E

DIRECTIONAL BORE CROSS SECTION
FOR CONDUIT
CITY OF SUGAR LAND & FORT BEND COUNTY

TYPICAL DETAIL F

TRENCH & PLACE CONDUIT
IN TXDOT RIGHT OF WAY

TYPICAL DETAIL G

DIRECTIONAL BORE CROSS SECTION
FOR CONDUIT
IN TXDOT RIGHT OF WAY

6" MIN.

12" MIN. BELOW FINISHED GRADE

60" MIN. COVER

EXISTING GRADE

BURIED CABLE MARKER TAPE

COMPACT BACKFILL IN CONTACT WITH RIBBON FIBER OPTIC CABLE

CONDUIT AS SPECIFIED E/W ANY NUMBER OF INNERDUCTS AND/OR PIPE, AS SPECIFIED

Diagram illustrating the cross-section of a trench for cable installation, showing the following components and dimensions:

- EXISTING GRADE**: The top surface of the trench.
- 6" MIN.**: Minimum depth of the trench.
- 12" MIN. BELOW FINISHED GRADE**: Dimension indicating the depth of the trench.
- 36" MIN. COVER**: Minimum depth of the trench.
- CONDUIT AS SPECIFIED E/V**: Conduit installed vertically.
- ANY NUMBER OF INNERDUCTS**: Multiple innerducts within the conduit.
- 6" FIBER OPTIC CABLE**: Fiber optic cable installed horizontally.
- COMPACT BACKFILL IN TRENCH WITH RIDE**: Backfill material in the trench.
- PACKED TARE**: Packed material in the trench.
- BURIED CABLE**: Buried cable in the trench.

PROJECT: 1706ANBB 008	KIMSPPOINT TO ELLIS CREEK
	SUGAR LAND, TX 77478
CLARIFICATION NO.	QUANTITY

[illegible]

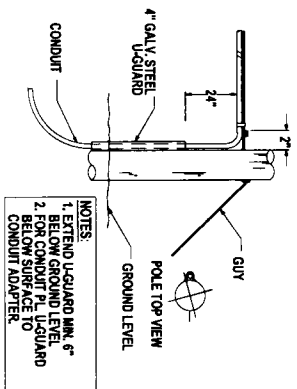
McImetro
ACCESS TRANSMISSION SERVICES CORP
OUTSIDE PLANT CONSTRUCTION
TITLE: FIBER OPTIC CABLE ROUTE
KINGSPONT TO ELLIS CREEK
SUGAR LAND, TX 77479
CONSTRUCTION DETAILS

DATE: 09/11/2017		
ENGINEER: GXT		
DRAWN BY: GXT		
REVISIONS		
DATE	DESCRIPTION	INITIALS

SCALE	
HORIZONTAL: NTS	VERTICAL: NTS
MP	TD MP
SHEET 08	OF 54

TYPICAL DETAIL "A"

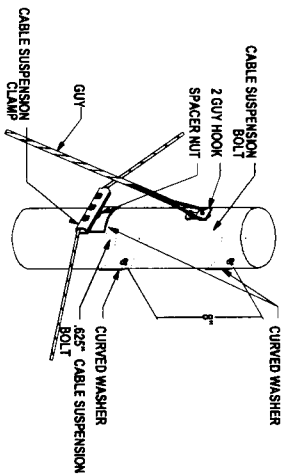
POLE ARRANGEMENT FOR
AERIAL TO BURIED



- NOTES:
1. EXTEND U-GUARD MIN. 6\"/>
 - 2. FOR CONDUIT P.L. U-GUARD BELOW SURFACE TO CONDUIT ADAPTER.

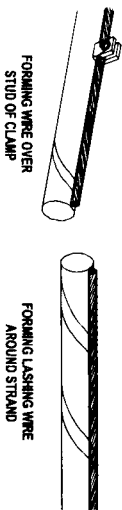
TYPICAL DETAIL "D"

SUSPENSION STRAND - PULL TOWARD
POLE - LESS THAN 5 FEET



TYPICAL DETAIL "G"

JOINING 045 LASHING WIRE

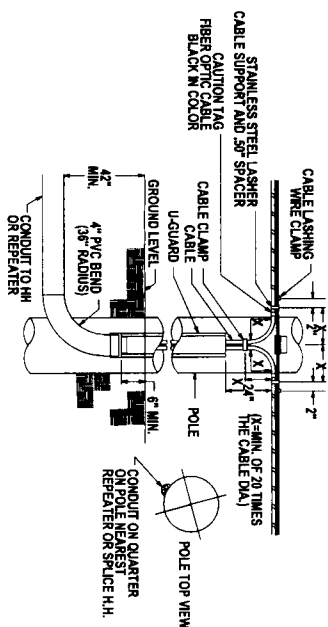


REMOVE ANY SLACK IN THE LASHING WIRE BY MAINTAINING A PULL ON THE WIRE AND TAPPING THE STRAND SLIGHTLY. THEN FORM THE WIRE OVER THE STUD AND TIGHTEN THE NUT. CUT THE FREE END OF THE LASHING WIRE OFF .15\"/>

TYPICAL AERIAL CONSTRUCTION DETAILS

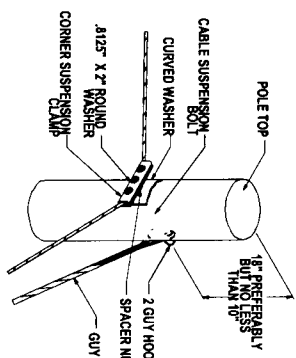
TYPICAL DETAIL "B"

POLE ARRANGEMENT FOR REPEATER
OR HANDHOLE LOCATION



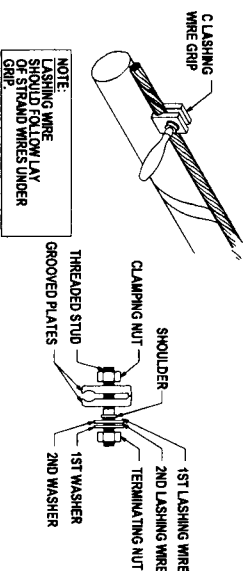
TYPICAL DETAIL "E"

SUSPENSION STRAND - PULL AWAY
FROM POLE - 5 FEET OR MORE



TYPICAL DETAIL "H"

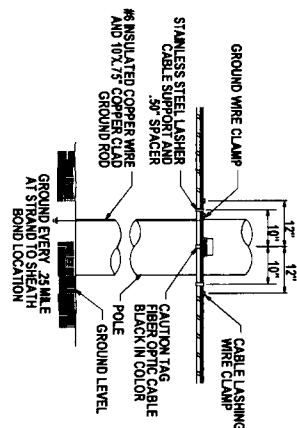
LASHING WIRE GRIP AND CLAMP



NOTE:
LASHING WIRE SHOULD FOLLOW LAY OF STRAND WIRES UNDER GRIP.

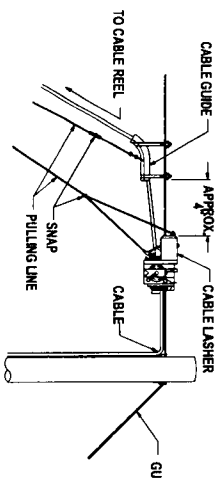
TYPICAL DETAIL "C"

TYPICAL CABLE & HARDWARE
INSTALLATION



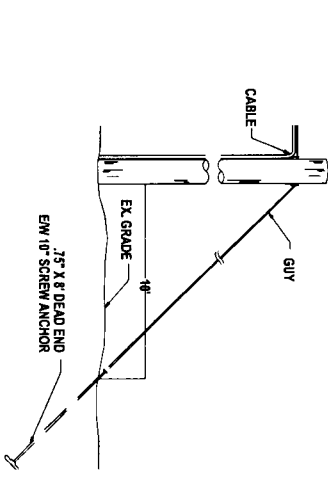
TYPICAL DETAIL "F"

TYPICAL ARRANGEMENT OF
CABLE LASHER AND CABLE GUIDE



TYPICAL DETAIL "I"

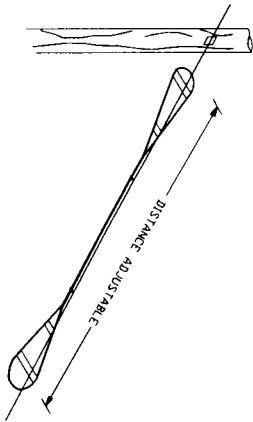
ANCHOR & DOWN GUY



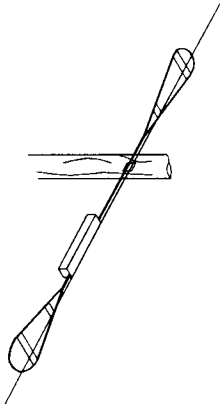
PROJECT: 1706ANB3 008		KINGSPOINT TO ELLIS CREEK	
SUGAR LAND, TX 77478		SHEET 09 OF 34	
CLARIFICATION NO.	QUANTITY	DATE: 09/11/2017 ENGINEER: GXT DRAWN BY: GXT REVISIONS DATE DESCRIPTION INITIAL SCALE HORIZONTAL: NTS VERTICAL: NTS MP TO MP SHEET 09 OF 34 FILE: 1706ANB3 008-0909C.RL DWG	
McMetro ACCESS TRANSMISSION SERVICES CORP.			
OUTSIDE PLANT CONSTRUCTION			
TITLE: FIBER OPTIC CABLE ROUTE			
KINGSPOINT TO ELLIS CREEK SUGAR LAND, TX 77478			
TYPICAL AERIAL CONSTRUCTION DETAILS			

TYPICAL AERIAL CONSTRUCTION DETAILS (CONT.)
TYPICAL AERIAL IN-LINE SLACK STORAGE DETAILS

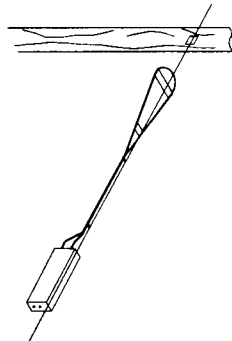
TYPICAL DETAIL "A"
RESERVE CABLE LENGTH
STRAND STORAGE APPLICATION



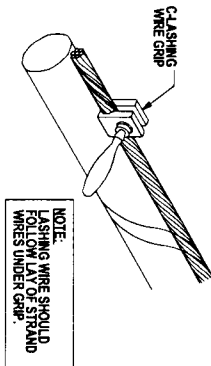
TYPICAL DETAIL "B"
IN-LINE SPLICE APPLICATION



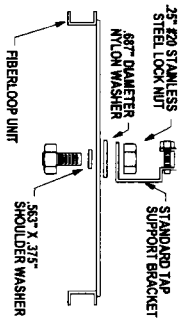
TYPICAL DETAIL "C"
BUTT SPLICE APPLICATION



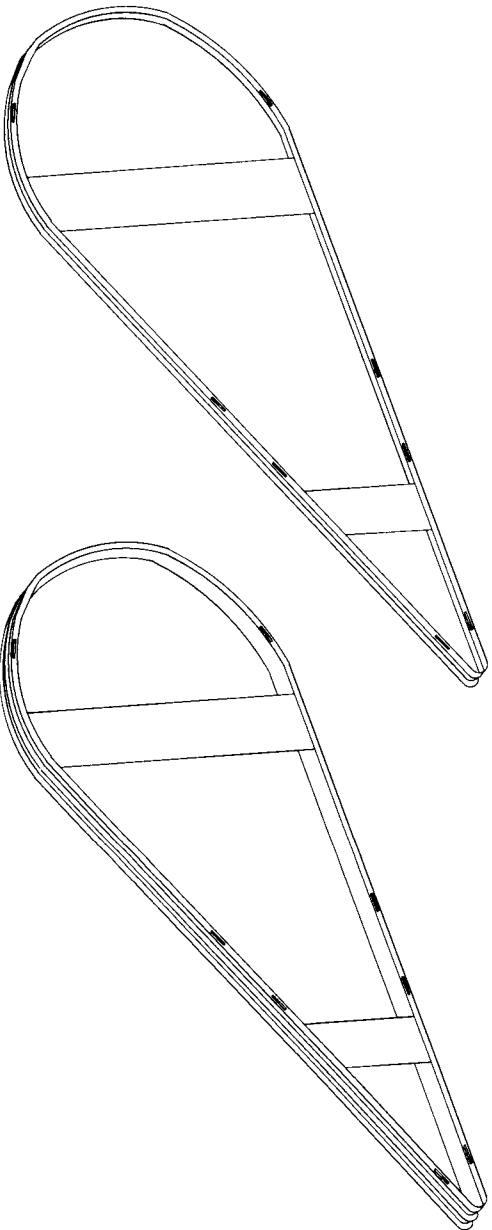
TYPICAL DETAIL "D"
LASHING WIRE GRIP AND CLAMP C-LASHING
WIRE GRIP INSTALLED ON STRAND



TYPICAL DETAIL "E"
HARDWARE KIT



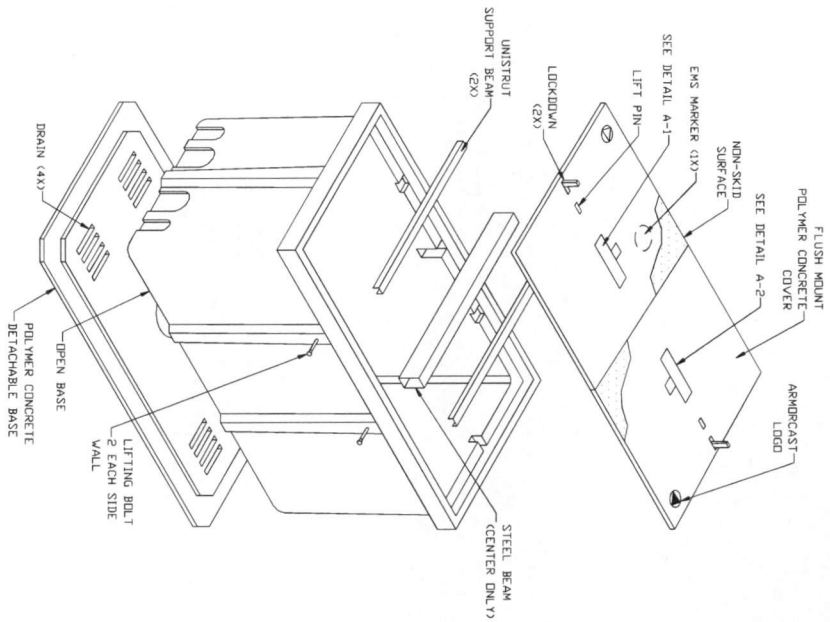
TYPICAL DETAIL "F"
SINGLE & DOUBLE FIBER LOOPS



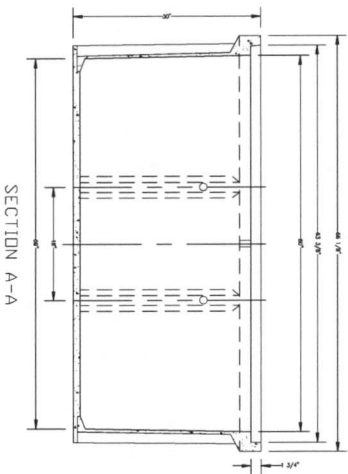
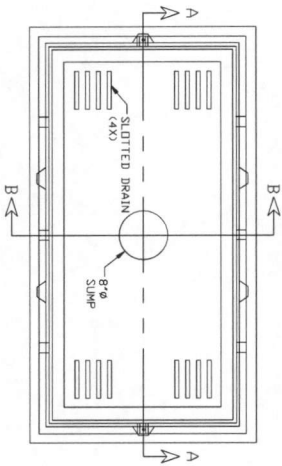
PROJECT: 1706ANB-008		KINGSMINT TO ELLIS CREEK		SUGAR LAND, TX 77478							
CLARIFICATION NO.		QUANTITY									
<p>MCInetno ACCESS TRANSMISSION SERVICES CORP.</p> <p>OUTSIDE PLANT CONSTRUCTION</p> <p>TITLE: FIBER OPTIC CABLE ROUTE</p> <p>KINGSPONT TO ELLIS CREEK SUGAR LAND, TX 77478</p> <p>TYPICAL AERIAL CONSTRUCTION DETAILS</p>											
<p>DATE: 09/11/2017</p> <p>ENGINEER: GXT</p> <p>DRAWN BY: GXT</p>											
<p>REVISIONS</p> <table border="1"> <thead> <tr> <th>DATE</th> <th>DESCRIPTION</th> <th>INITIAL</th> </tr> </thead> <tbody> <tr> <td></td> <td></td> <td></td> </tr> </tbody> </table>						DATE	DESCRIPTION	INITIAL			
DATE	DESCRIPTION	INITIAL									
<p>SCALE</p> <p>HORIZONTAL: NTS</p> <p>VERTICAL: NTS</p> <p>MP TO MP</p> <p>SHEET NO OF 34</p> <p>FILE: 1706ANB-008-010DC-MC-106</p>											

2.5' x 5' x 2.5' 30K STANDARD HANDHOLE DETAILS

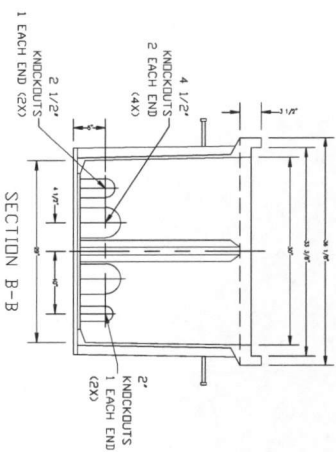
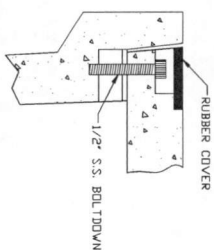
DETAIL "A"
EXPLODED ISOMETRIC DETAIL



SECTION B
LOCKING DEVICE
CROSS SECTION



DETAIL "C"
FLUSH MOUNT
COVER DETAIL



30K
M C I
800 MCI-WORK
DETAIL A-1

30K
M C I
800 MCI-WORK
DETAIL A-2

NOTE:

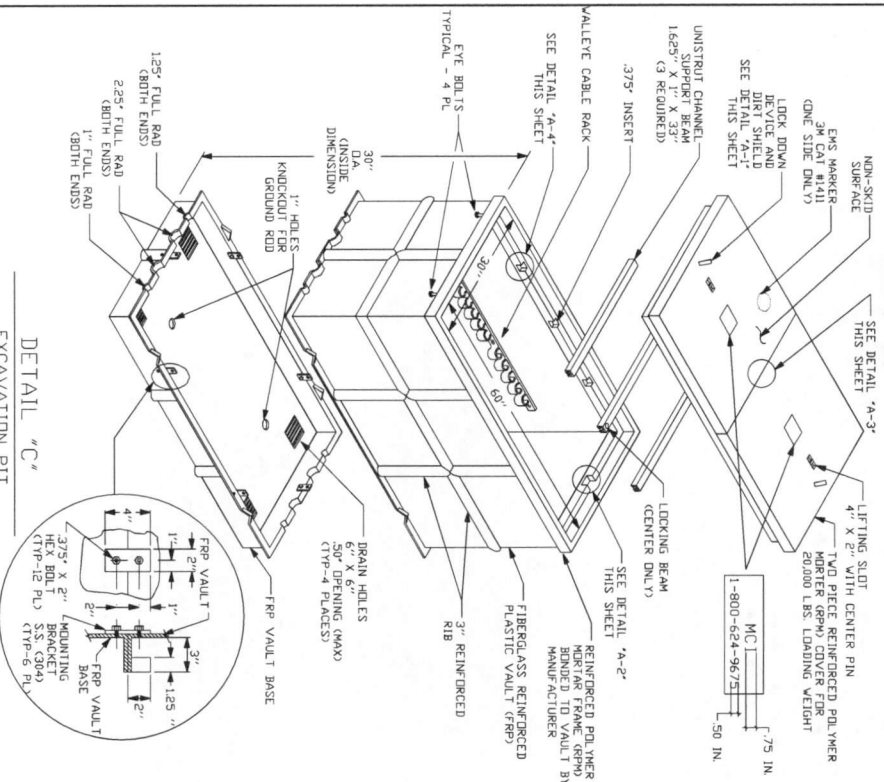
ITEM	QTY	DESCRIPTION
1	(1)	JOHNNY LOCK KEY
2	(2)	S.S JOHNNY BOLT W/FLAT WASHER, SHRINK WRAP COVERS TO FRAM FOR PACKAGING.
3		

PROJECT: 1206ANBB 008		KINGPOINT TO ELLIS CREEK	
SUGAR LAND, TX 77478		CLASSIFICATION NO.	
QUANTITY			
McInetro ACCESS TRANSMISSION SERVICES CORP. OUTSIDE PLANT CONSTRUCTION TITLE: FIBER OPTIC CABLE ROUTE KINGPOINT TO ELLIS CREEK SUGAR LAND, TX 77478 2.5' x 5' x 2.5' 30K STANDARD HANDHOLE DETAILS			
DATE: 09/11/2017			
ENGINEER: GXT			
DRAWN BY: GXT			
REVISIONS			
DATE	DESCRIPTION	INITIAL	
-	-	-	
SCALE			
HORIZONTAL: NTS			
VERTICAL: NTS			
MP	TO MP		
SHEET 11	OF 54		
FILE: 1206ANBB 008-0111K-BEL.DWG			

2.5' x 5' x 2.5' SPLIT HANDHOLE DETAILS

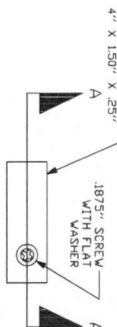
DETAIL "A"

DESCRIPTION



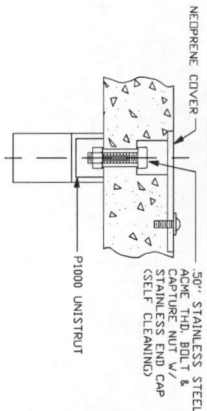
DETAIL "A-1"

LOCK DOWN DEVICE



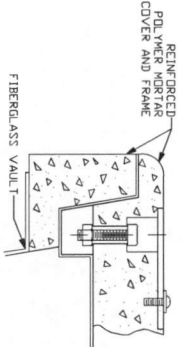
DETAIL "A-2"

ENGAGED LOCK DOWN DEVICE



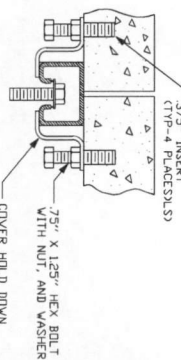
SECTION A-A

LOCKING DEVICE CROSS SECTION



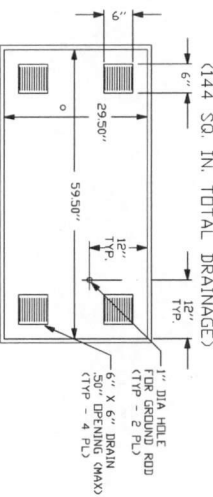
DETAIL "A-3"

COVER HOLD DOWN BRACKET OF 2-PIECE RPM COVER



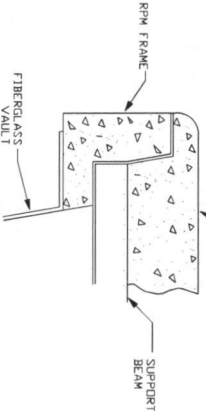
DETAIL "B"

VAULT BOTTOM PLAN VIEW



DETAIL "A-4"

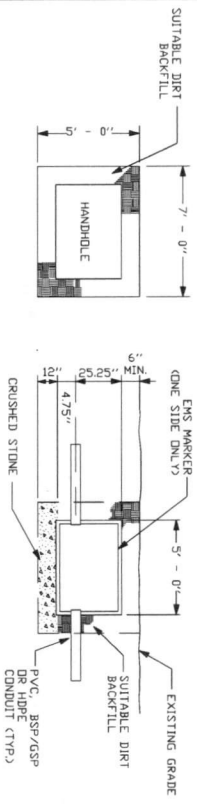
SUPPORT BEAM INSTALLATION (TYP. AT 6 PLACES)



PLAN

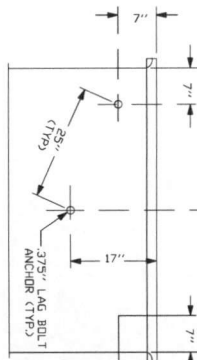
DETAIL "C"

EXCAVATION PIT



DETAIL "D"

SIDE WALL VIEW INSIDE LOOKING OUT



NOTE:
LINEAR DISTANCE BETWEEN LAG BOLT ANCHORS MUST BE 29\"/>

- NOTES:
1. VOID IN EXCAVATED AREAS TO BE BACKFILLED WITH SELECT MATERIAL.
 2. BOTTOM OF EXCAVATED PIT TO BE BACKFILLED WITH 12\"/>

SCALE	HORIZONTAL	NTS
VERTICAL	NTS	
MP	TO MP	
SHEET 12	OF 54	

MCInetro
ACCESS TRANSMISSION SERVICES CORP.

OUTSIDE PLANT CONSTRUCTION

TITLE: FIBER OPTIC CABLE ROUTE

KINGSPPOINT TO ELLIS CREEK
SUGAR LAND, TX 77478

2.5' x 5' x 2.5' SPLIT HANDHOLE DETAILS

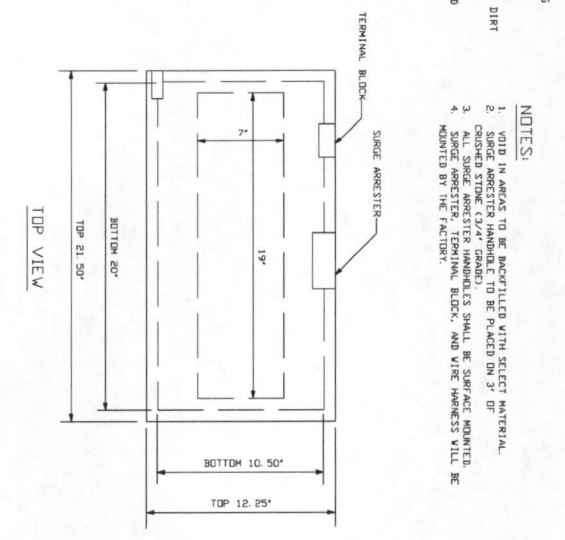
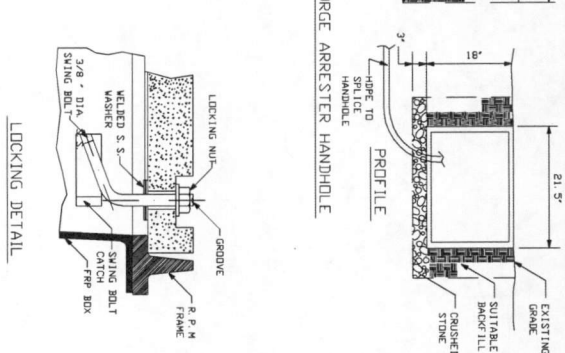
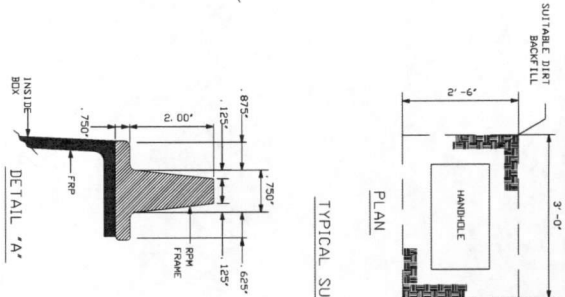
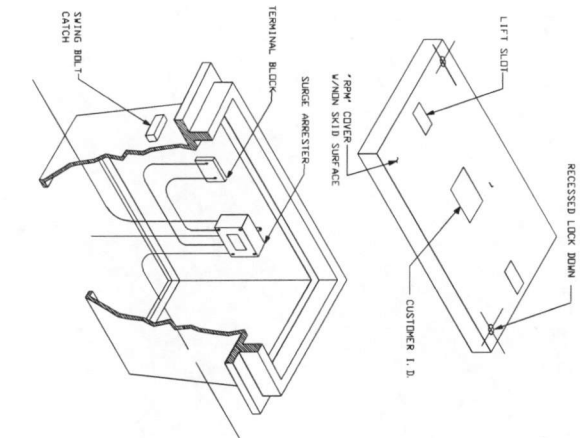
DATE: 09/11/2017
ENGINEER: GXT
DRAWN BY: GXT

REVISIONS	DATE	DESCRIPTION	INITIAL
1			

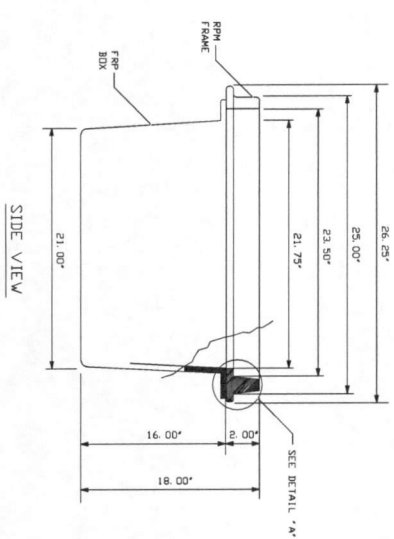
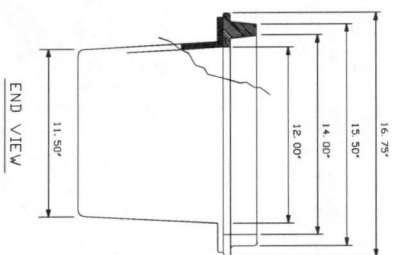
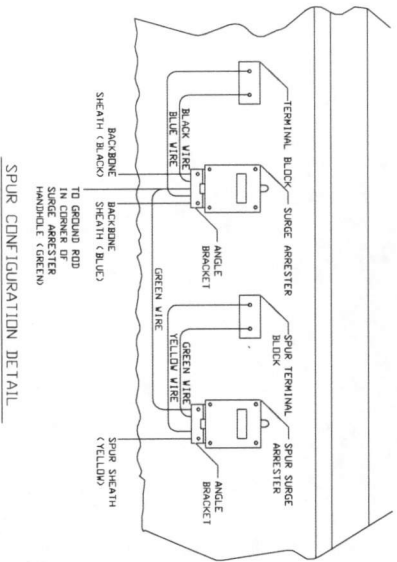
APPROVED BY: [Signature]
DATE: 09/11/2017

PROJECT: 1706ANB-008
KINGSPPOINT TO ELLIS CREEK
SUGAR LAND, TX 77478
CLASSIFICATION NO.
QUANTITY

SURGE ARRESTER HANDHOLE DETAIL



- NOTES:
1. VOID IN AREAS TO BE BACKFILLED WITH SELECT MATERIAL.
 2. SURGE ARRESTER HANDHOLE TO BE PLACED ON 5" OF CRUSHED STONE (3/4" GRADE).
 3. ALL SURGE ARRESTER HANDHOLES SHALL BE SURFACE MOUNTED.
 4. SURGE ARRESTER HANDHOLE BLOCKS AND WIRE WARESS WILL BE MOUNTED BY THE FACTORY.



PROJECT: 1706ANB-008		KINGPOINT TO ELLIS CREEK	
SUGAR LAND, TX 77478		DATE: 09/21/2017	
CLASSIFICATION NO.		ENGINEER: GXT	
QUANTITY		DRAWN BY: GXT	
		DATE	
		DESCRIPTION	
		INITIAL	
		REVISIONS	
		DATE	
		DESCRIPTION	
		INITIAL	
		SCALE	
		HORIZONTAL: NTS	
		VERTICAL: NTS	
		MP TO MP	
		SHEET 13 OF 54	
		FILE: 1706ANB-008-01-DWG-BOL.DWG	

McInetro
ACCESS TRANSMISSION SERVICES CORP.
OUTSIDE PLANT CONSTRUCTION
TITLE: FIBER OPTIC CABLE ROUTE
KINGPOINT TO ELLIS CREEK
SUGAR LAND, TX 77478
SURGE ARRESTER HANDHOLE DETAIL

DETAIL "A"

CABLE SLACK ARRANGEMENT

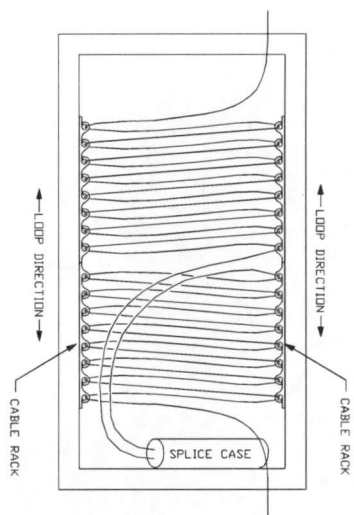
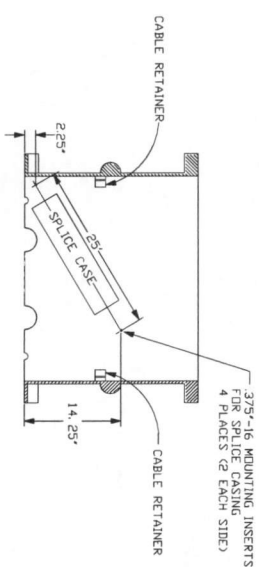


Diagram illustrating the layout of a cable rack system. The rack is shown with two main sections, each labeled "CABLE RACK". The total width of the rack is indicated as 30". The distance between the two cable racks is labeled "LOOP DIRECTION" with a dimension of 60". A "SPLICE CASE" is located at the top of the rack. The diagram also shows a "CABLE RACK" on the left side, with a "CABLE RACK" label on the right side. The diagram is labeled "B" at the bottom right.

SECTION B-B



PROJECT: 1706ANBB. 008	
KINGSPOINT TO ELLIS CREEK	
SUGAR LAND, TX 77478	
CLARIFICATION NO.	QUANTITY

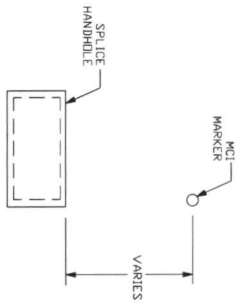
MCImetro
ACCESS TRANSMISSION SERVICES CORP.
OUTSIDE PLANT CONSTRUCTION
TITLE: FIBER OPTIC CABLE ROUTE
KINGSPPOINT TO ELLIS CREEK
SUGAR LAND, TX 77478
HANDHOLE SLACK STORAGE DETAILS

DATE: 09/11/2017		
ENGINEER: GXT		
DRAWN BY: GXT		
REVISIONS		
DATE	DESCRIPTION	INITIALS
-	-	-

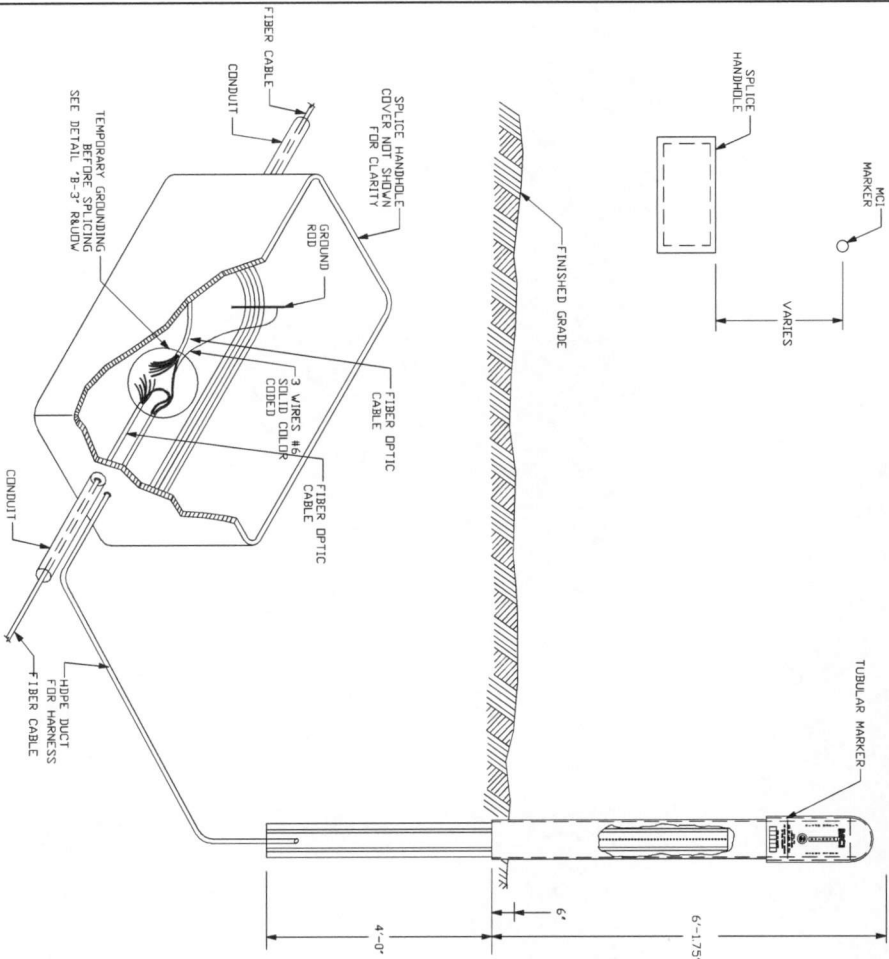
SCALE	
HORIZONTAL:	NTS
VERTICAL:	NTS
MP _____	TD MP _____
SHEET 14	OF 54
FILE:17064NBB-008-011AAC, REL DWG	

CABLE GROUNDING INSTALLATION DETAILS (FOR CONTRACTOR INSTALLATION)

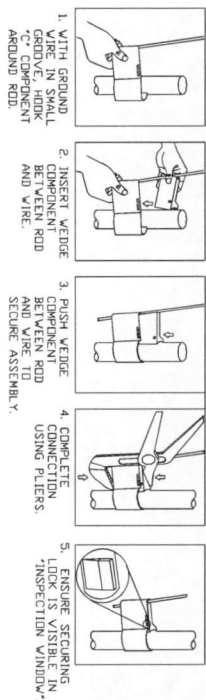
DETAIL "A"
PLAN VIEW



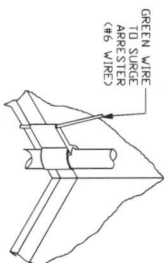
DETAIL "B"
INSTALLATION DETAIL



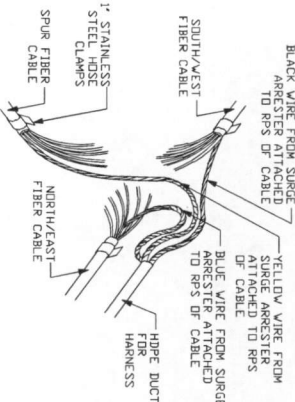
DETAIL "B-1"
C-LOCK GROUND ROD
INSTALLATION METHOD



DETAIL "B-2"
C-LOCK CONNECTOR



DETAIL "B-3"
TEMPORARY GROUNDING
(INCLUDING SPUR CABLE)



NOTE:
SEE DETAIL "B-1" THIS SHEET FOR INSTALLATION METHOD.

- NOTES:
- DSP CONTRACTOR SHALL INSTALL THE FOLLOWING MCI FURNISHED MATERIALS.
 - * 6" TUBULAR MARKER WITH HARDWARE (D)
 - * SPICE HANDHOLE
 - * GROUND ROD AND FIGURE 8 CONNECTOR
 - * PULL WIRE HARNESS FROM HANDHOLE TO MARKER
 - DRAWINGS SUPPLIED BY CONTRACTOR FURNISHED MATERIALS SHALL BE IN PLACE PRIOR TO PLACEMENT OF THE FIBER OPTIC CABLE. AT WHICH TIME THE TEMPORARY GROUND CONNECTION WILL BE MADE IN ACCORDANCE WITH DETAIL "A".
 - AFTER CONNECTION OF THE TEMPORARY GROUND, THE CONTRACTOR SHALL SEAL THE ENDS OF THE FIBER OPTIC CABLE AND WIRING HARNESS BY THE CONTRACTOR.
 - AFTER INSTALLATION OF THE FIBER OPTIC CABLE AND WIRING HARNESS BY THE CONTRACTOR, PREVENT THE ENTRY OF MOISTURE THROUGH THE HDPE DUCT LINE OPENINGS WITH MCI APPROVED MATERIAL TO THE SPICE HANDHOLE FOR EAST/WEST ROUTES, THE EASTERN CORNER OF THE SPICE HANDHOLE FOR EAST/WEST ROUTES.

PROJECT: 1206ANBB, DOB		KINGSPONT TO ELLIS CREEK	
SUGAR LAND, TX 77478		CLASSIFICATION NO.	
QUANTITY		DATE: 09/11/2017	
ENGINEER: GXT			
DRAWN BY: GXT			
DATE: 09/11/2017			
REVISIONS			
NO.	DESCRIPTION	INITIAL	DATE
1	SCALE		
2	HORIZONTAL: NTS		
3	VERTICAL: NTS		
4	MP TO MP		
5	SHEET 15 OF 34		

McInetro
ACCESS TRANSMISSION SERVICES CORP.

OUTSIDE PLANT CONSTRUCTION

TITLE: FIBER OPTIC CABLE ROUTE

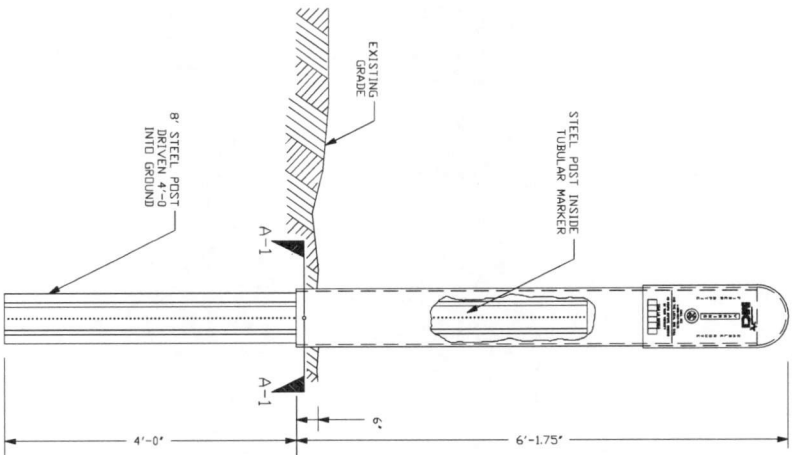
KINGSPONT TO ELLIS CREEK
SUGAR LAND, TX 77478

CABLE GROUNDING INSTALLATION DETAILS

TUBULAR MARKER DETAILS

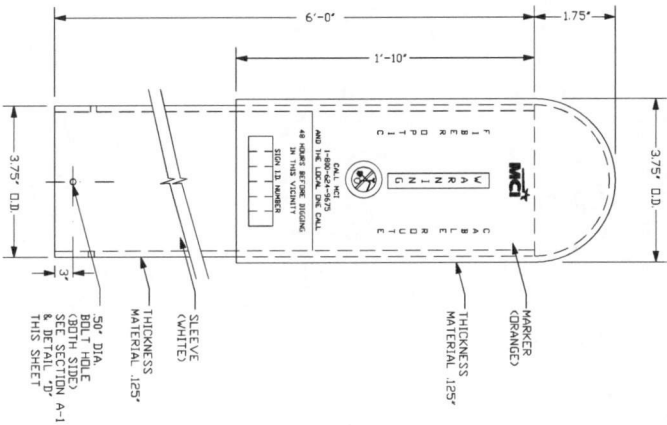
DETAIL "A"

INSTALLATION VIEW



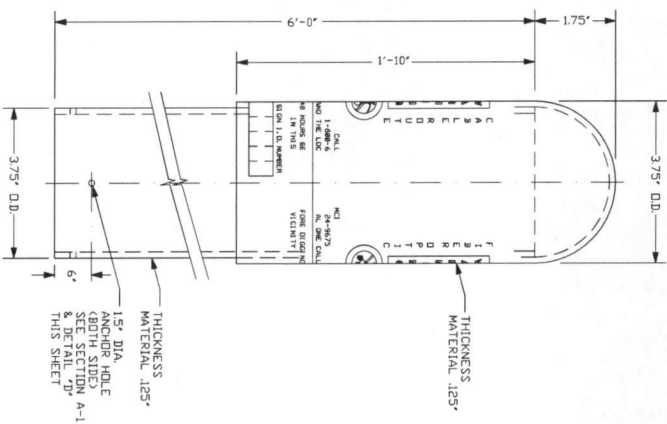
DETAIL "B"

FRONT VIEW

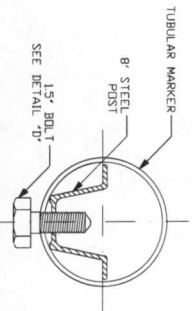


DETAIL "C"

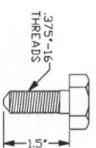
SIDE VIEW



SECTION A-A
TUBULAR MARKER



DETAIL "D"



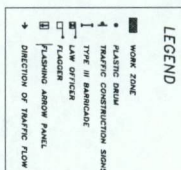
PROJECT 1706AMB.008		KINGSPONT TO ELLIS CREEK	
SUGAR LAND, TX 77478		DATE 09/11/2017	
CLARIFICATION NO.		ENGINEER: GXT	
QUANTITY		DRAWN BY: GXT	
		DATE	
		DESCRIPTION	
		INITIAL	
		REVISIONS	
		DATE	
		DESCRIPTION	
		INITIAL	
		SCALE	
		HORIZONTAL: NTS	
		VERTICAL: NTS	
		MP TO MP	
		SHEET 16 OF 54	
		FILE: 1706AMB.008-016A.01.00	

MCImetro
ACCESS TRANSMISSION SERVICES CORP.
OUTSIDE PLANT CONSTRUCTION
TITLE: FIBER OPTIC CABLE ROUTE
KINGSPONT TO ELLIS CREEK
SUGAR LAND, TX 77478
TUBULAR MARKER DETAILS

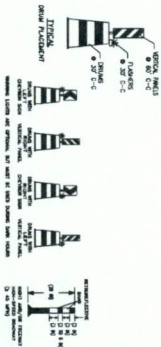
1. CONTRACTOR SHALL PROVIDE AND INSTALL TRAFFIC CONTROL DEVICES IN CONFORMANCE WITH PART VI OF TEXAS MANUAL ON UNIFORM TRAFFIC CONTROL DEVICES (LATEST - LATEST EDITION WITH REVISIONS) DURING CONSTRUCTION.
2. NO LANES SHALL BE BLOCKED DURING CONSTRUCTION.

3. EDUCATION WITH TITLE PLATES AND/OR PHOTO OF LEADER. HIGH SCHOOL GRADUATES OR COLLEGE GRADUATES WITH A MINIMUM OF 16 CREDIT HOURS OF COLLEGE CREDIT IN THE FIELD OF INTEREST ARE CONSIDERED TO BE "EDUCATED." (SEE TRINEXY APPROVED LOCAL WITH SELLING AND BUREL EXPOSURE TO PUBLICATION NEXT TO EDUCATION PLATE FOR MORE INFORMATION.)
4. APPROVED CROPS OF TRINEXY CONTROL INSPECTION AT ALL TIMES.
5. IF THE COMPLICATOR DESIRES TO USE A DIFFERENT METHOD OF TRINEXY CONTROL, HE MUST FIRST OBTAIN THE TRINEXY CONTROL UNIT. THE UNIT MUST BE IN THE COMPANY. THE UNIT SHALL BE REINSPECTED BY THE TRINEXY CONTROL UNIT. THE UNIT SHALL BE REINSPECTED BY THE TRINEXY CONTROL UNIT. THE UNIT SHALL BE REINSPECTED BY THE TRINEXY CONTROL UNIT.
6. THE COMPLICATOR SHALL CONTACT HIS/HER COUNTY PLANT INSTRUCTIVE TO OBTAIN A LICENSED NUMBER IN THE STATE OF THE COMPLICATOR. THE LICENSED NUMBER SHALL BE REINSPECTED BY THE TRINEXY CONTROL UNIT.
7. THE COMPLICATOR SHALL CONTACT HIS/HER COUNTY PLANT INSTRUCTIVE TO OBTAIN A LICENSED NUMBER IN THE STATE OF THE COMPLICATOR. THE LICENSED NUMBER SHALL BE REINSPECTED BY THE TRINEXY CONTROL UNIT.

GENERAL TRAFFIC CONTROL NOTES



NOTE:
SEE SHEET 21 OF 54 FOR

[illegible]

[illegible]

PROJECT CLARIFICATION SUMMARY		
DESCRIPTION	QUANTITY	UNIT
PLACE 120" X 80" X 30" HAND-HOLE	40	EA
PLACE 1-2" HDPE (SDR11) CONDUIT	2,133	LF
PLACE 2-2" HDPE (SDR11) CONDUIT	31,608	LF
PLACE 3-2" HDPE (SDR11) CONDUIT	481	LF
PULL 1-800F CABLE (INCLUDES 4,100' IN SLACK COILS)	35,649	LF
PULL 1-280F CABLE (INCLUDES 4,100' IN SLACK COILS)	35,619	LF
PULL 1-72F CABLE (INCLUDES 400' IN SLACK COILS)	2,593	LF
ATTACH 1-2" STAND OFF RISER	4	EA
PLACE 1-6M AERIAL STRAND (INCLUDES ALL HARDWARE, LOOP EQUIPMENT & GUYS)	3,427	LF
LASH 1-280F & 1-800F CABLES (INCLUDES IN 500' SLACK LOOPS)	3,927	LF
PLACE (BURIED CABLE) MARKER	40	EA

SUGARLAND, TX
FORT BEND, COUNTY



PROFILE
SOUTH SIDE OF W BELFORT AVE
LOOKING NORTH
NTS

EXISTING GRADE

36" MIN. DEPTH
PROP. 3-2" HDPE MCM CONDUIT

NEW VILLAGE LN.

W BELFORT AVE

SEE SHEET 19 TO MATCH SURVEY STA. 5+74

CAUTION
W/ UTILITIES
IN AREA

13839 W BELFORT AVE
SUGARLAND, TX 77498

1+21 PROP. CUSTOMER MMHH
PLACE 100' SLACK COIL (1-288F)
PLACE 100' SLACK COIL (1-864F)

NEW CONDUIT PATH 4" SCH 40 PVC WITH 3-2"
CELL W/ACCEL INNERDUCT WITH 3/4"
MULE TAPE WITHIN FROM MCM HH AT
PROPERTY LINE TO NEW MCM HH AT
PROPERTY LINE. CONDUIT SHALL BE
TRENCHED AND BRISKS WILL NEED TO BE
REMOVED

15" UTILITY EASEMENT

TRENCH 11"
TRENCH & PLACE CABLE
1-288F & 1-864F
CUSTOMER TO PROVIDE AND INSTALL
17' X 30' X 50' DEEP PAND HOLE IN ROW

SEE SHEET 18.1 FOR ENLARGED PLAN

CRAN TOWER
HO 0012-10897-KINGSPONT
13825 W BELFORT AVE STE B
SUGARLAND, TX 77478

UTILITY & R.O.W. REPRESENTED ON
PLANS ARE BASED ON RECORDS
SURVEY. NOT BASED ON
BOUNDARY SURVEY & FIELD EXPOSURES.

CAUTION !!!
CONTRACTOR TO LOCATE &
VERIFY ALL UTILITIES
PRIOR TO CONSTRUCTION

ALL UTILITIES MUST BE COVERED BY PORTLAND
CONCRETE. ALL UTILITIES TO BE
REMOVED BY VACUUM EXCAVATION ONLY.

Know what's below
Call before you dig



CALL BEFORE YOU DIG
1-800-245-4545
48 HOURS NOTICE REQUIRED

PROJECT: 1706ANB3_008

KINGSPONT TO ELLIS CREEK	SUGARLAND, TX 77478
CLARIFICATION NO.	QUANTITY
PLACE HANDHOLE	-
PROP. 4" HDPE	-
PROP. 3-2" HDPE	457'
PROP. 2-2" HDPE	-
PROP. 1-2" HDPE	-
PULL 1-72F CABLE	-
PULL 1-288F CABLE	557'
PULL 1-864F CABLE	557'
1-2" STAND OFF RISER	-
DOWN GUY & ANCHOR	-
PLACE 6M STRAND	-
LOCK 1-288F/864F CABLE	-

McMetro
ACCESS TRANSMISSION SERVICES CORP.

OUTSIDE PLANT CONSTRUCTION

TITLE: FIBER OPTIC CABLE ROUTE

KINGSPONT TO ELLIS CREEK
SUGARLAND, TX 77478
OUTSIDE PLANT - PLAN

DATE: 09/11/2017	ENGINEER: GXT	
DRAWN BY: GXT	REVISIONS	
DATE	DESCRIPTION	INITIAL
-	-	-

SCALE

HORIZONTAL: 1"=100'

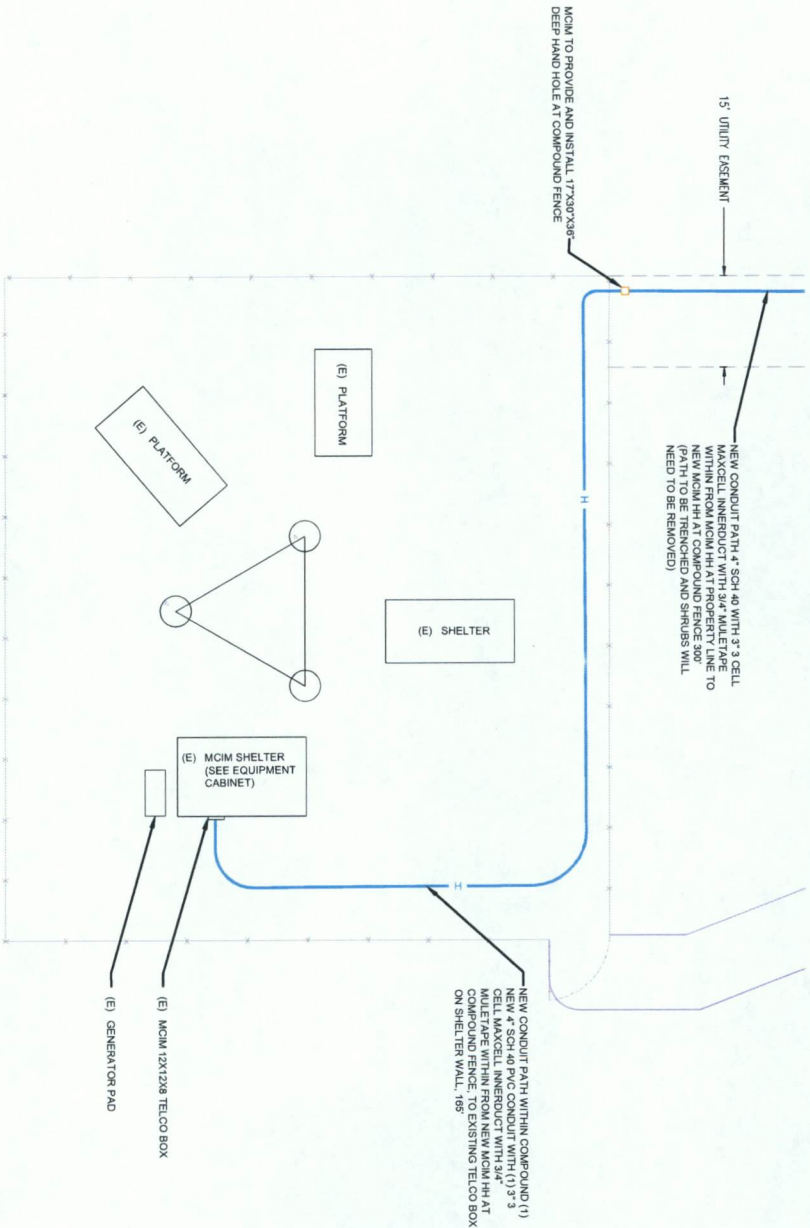
VERTICAL: 1"=100'

MP TO MP

SHEET 18 OF 54

FILE: 1706ANB3_008-01.DWG

SUGARLAND, TX
FORT BEND, COUNTY



CRAN TOWER
HO 0012-108997-KINGSPPOINT
13825 W BELFORT AVE STE B
SUGARLAND, TX 77478

NOTE
UTILITY & E.O.W. REPRESENTED ON PLANS ARE BASED ON RECORDS INFORMATION. NOT BASED ON SURVEY DATA. FIELD EXPOSURES REQUIRED TO VERIFY.

CAUTION !!!
CONTRACTOR TO LOCATE & VERIFY ALL UTILITIES PRIOR TO CONSTRUCTION.

NOTE
ALL UTILITIES MUST BE RECOVERED BY REPAIRING A 1/2" MAXIMUM DIAMETER CORE ROPE. ALL UTILITIES SHALL BE REMOVED BY VACUUM EXCAVATION ONLY.



PROJECT: 1206ANBB.008

KINGSPPOINT TO ELLIS CREEK
SUGARLAND, TX 77478

CLASSIFICATION AND QUANTITY	PLACE MARKER
PROP. 4" HDPE	-
PROP. 3-2" HDPE	-
PROP. 2-2" HDPE	-
PROP. 1-2" HDPE	-
PULL 1-725' CABLE	-
PULL 1-288' CABLE	-
PULL 1-664' CABLE	-
1-2" STAND OFF RISER	-
DOWN GUY & ANCHOR	-
PLACE 6M STRAND	-
USE 1788/7884 CABLE	-

MCImetro
ACCESS TRANSMISSION SERVICES CORP.
TITLE: FIBER OPTIC CABLE ROUTE
KINGSPPOINT TO ELLIS CREEK
SUGARLAND, TX 77478
OUTSIDE PLANT - PLAN

DATE: 09/11/2017		
ENGINEER: GXT		
DRAWN BY: GXT		
REVISIONS		
DATE	DESCRIPTION	INITIAL
-	-	-

SCALE	
HORIZONTAL: 1"=100'	VERTICAL: 1"=100'
MP	TO MP
SHEET 181	OF 54
FILE: 1206ANBB.008-018 IAC REL DW	



CALL BEFORE YOU DIG
1-800-245-4545
48 HOURS NOTICE REQUIRED



SUGARLAND, TX
FORT BEND, COUNTY

PROFILE
SOUTH SIDE OF W BELFORT AVE
LOOKING NORTH

SCALE:
HORIZ: 1" = 100'
VERT: 1" = 10'

SEE SHEET 19.1 TO MATCH SURVEY STA. 5+74

EDGE OF DRIVEWAY
EDGE OF DRIVEWAY

EXIST GRADE

DIR BORE 3-2" HDPE F/W
1-288F & 1-804F CABLE

STA 1+28 END TRENCH
STA 1+21 BEGIN DIR BORE
EXIST 1-EC HH
BEGIN TRENCH

NOTE: UTILITY & RAIN
PLANS ARE BASED ON RECORDS
INFORMATION. NOT BASED ON
BOUNDARY SURVEY & FIELD EXPOSURES.

CAUTION!!!
CONTRACTOR TO LOCATE &
VERIFY ALL EXISTING UTILITIES
PRIOR TO CONSTRUCTION

NOTE: ALL UTILITIES MUST BE VERIFIED BY POT-HOLING
A MINIMUM OF 10' PRIOR TO ANY
TRENCHING. ALL UTILITIES WILL BE REMOVED BY MANUAL EXCAVATION ONLY.

CAUTION!!!
EXIST. BURIED FIBER, TELEPHONE, CABLE, GAS, ELECTRIC, WATER,
SEWER, AND OTHER UTILITIES MAY BE PRESENT IN CONSTRUCTION AREA
AND HAVE NOT BEEN FIELD LOCATED. CONTRACTOR TO VERIFY EXACT
LOCATION AND DEPTH PRIOR TO ANY DRIVING AND/OR BORING.

Know what you dig.
CALL BEFORE YOU DIG.

CALL BEFORE YOU DIG
1-800-245-4545
48 HOURS NOTICE REQUIRED

PROJECT: 1706ANB.008
KINGPOINT TO ELLIS CREEK
SUGARLAND, TX 77478
CLASSIFICATION NO. QUANTITY
PLACE HANDHOLE
PLACE MANHOLE
PROP. 4" HDPE
PROP. 3-2" HDPE
PROP. 2-2" HDPE
PROP. 1-2" HDPE
PULL 1-75F CABLE
PULL 1-288F CABLE
PULL 1-804F CABLE
1-2" STAND OFF RISE
DOWN GUT & ANCHOR
PLACE 6M STRAND
LASH 1-804F/1-804F CABLE

McInetro
ACCESS TRANSMISSION SERVICES CORP.

OUTSIDE PLANT CONSTRUCTION
TITLE: FIBER OPTIC CABLE ROUTE
KINGPOINT TO ELLIS CREEK
SUGARLAND, TX 77478
OUTSIDE PLANT - PROFILE

DATE: 09/11/2017

ENGINEER: GXT

DRAWN BY: GXT

REVISIONS

DATE DESCRIPTION INITIAL

SCALE

HORIZONTAL: AS NOTED

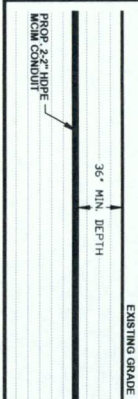
VERTICAL: AS NOTED

MP TO MP 54

SHEET 182 OF 54

FILE: 1706ANB.008-0118.DWG BIL IN

PROFILE
SOUTH SIDE OF W BELFORT AVE
LOOKING NORTH
N/S



SUGARLAND, TX
FORT BEND, COUNTY

SEE SHEET 20 TO MATCH SURVEY STA. 19+24

17+98 PLACE HH & MKR
PLACE 100' SLACK COIL (1-288F)
PLACE 100' SLACK COIL (1-864F)

13923 W BELFORT AVE.
SUGARLAND, TX 77498

TOWN SQUARE RD

RIPPLEWAVE DR.

5+98 PLACE HH & MKR
PLACE 100' SLACK COIL (1-288F)
PLACE 100' SLACK COIL (1-864F)

SEE SHEET 18 TO MATCH SURVEY STA. 5+74

NOTE
UTILITY & E.O.W. REPRESENTED ON
PLANS ARE BASED ON RECORDS
INFORMATION, NOT BASED ON
BOUNDRY SURVEY & FIELD EXPOSURES.

CAUTION !!!
CONTRACTOR TO LOCATE &
VERIFY ALL UTILITIES
PRIOR TO CONSTRUCTION

NOTE
ALL UTILITIES MUST BE PROTECTED BY RIGGING
A 12" MINIMUM DIAMETER "CORE BORE" WILL BE MADE
THEN THE REMAINING SOIL WILL BE REMOVED BY VACUUM EXCAVATION ONLY

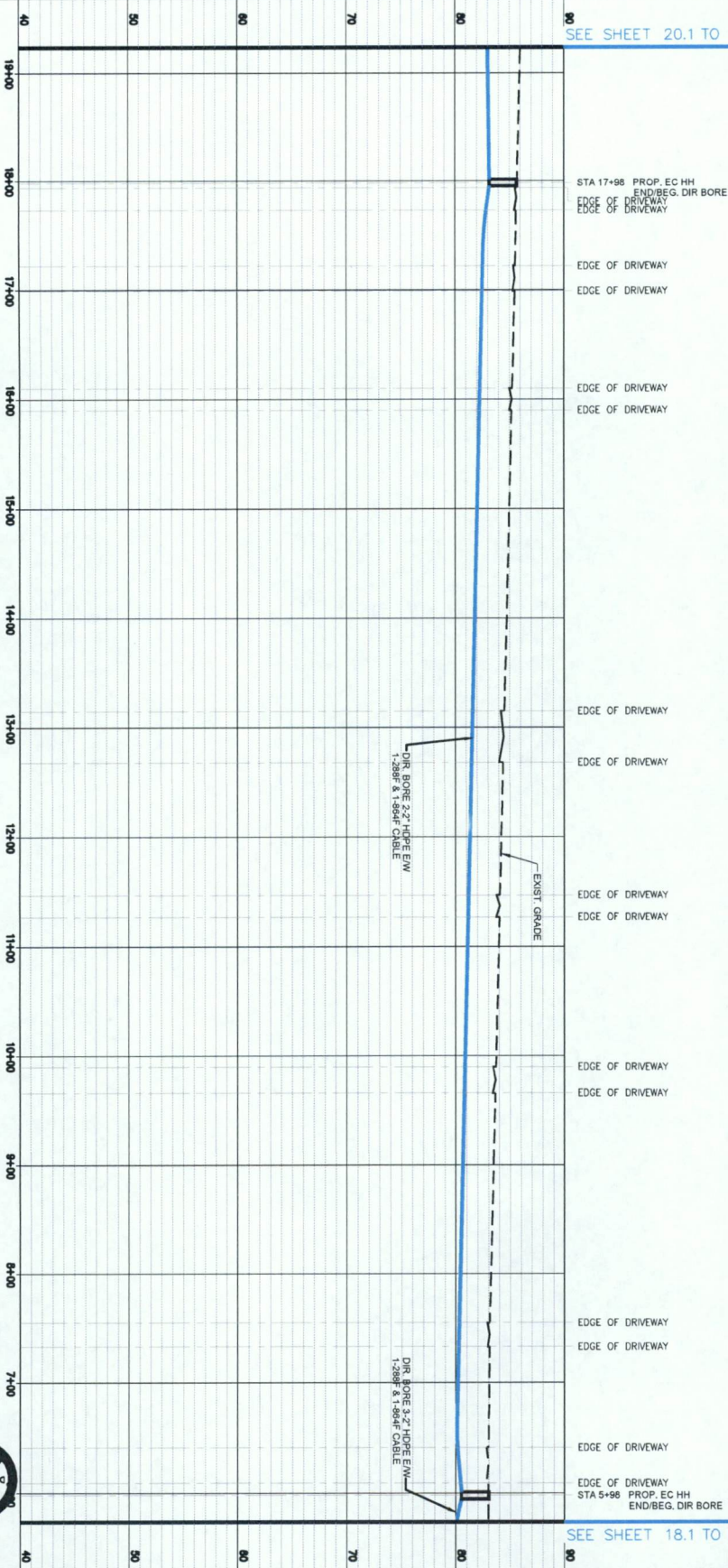


CALL BEFORE YOU DIG
1-800-245-4545
48 HOURS NOTICE REQUIRED

PROJECT: 1206ANBB, 008		
KINGPOINT TO ELLIS CREEK		
SUGARLAND, TX 77478		
CLASSIFICATION NO.	QUANTITY	
PLACE HANDHOLE	2	
PLACE MARKER	2	
PROP. 4" HDPE	24'	
PROP. 3-2" HDPE		
PROP. 2-2" HDPE	1,326'	
PROP. 1-2" HDPE	-	
PULL 1-72" CABLE	-	
PULL 1-288F CABLE	1,550'	
PULL 1-864F CABLE	1,550'	
1-2" STAND OFF RISER	-	
DOWN GUY & ANCHOR	-	
PLACE 6M STRAND	-	
USE 1-288F/1-864F CABLE	-	
McMetro ACCESS TRANSMISSION SERVICES CORP.		
OUTSIDE PLANT CONSTRUCTION		
TITLE: FIBER OPTIC CABLE ROUTE		
KINGPOINT TO ELLIS CREEK SUGARLAND, TX 77478 OUTSIDE PLANT - PLAN		
DATE: 09/11/2017		
ENGINEER: GXT		
DRAWN BY: GXT		
REVISIONS		
DATE	DESCRIPTION	INITIAL
-	-	-
NOTES: 1. SEE DRAWING PROVIDED FOR ALL DIMENSIONS. 2. SEE DRAWING PROVIDED FOR ALL DIMENSIONS. 3. SEE DRAWING PROVIDED FOR ALL DIMENSIONS. 4. SEE DRAWING PROVIDED FOR ALL DIMENSIONS. 5. SEE DRAWING PROVIDED FOR ALL DIMENSIONS. 6. SEE DRAWING PROVIDED FOR ALL DIMENSIONS. 7. SEE DRAWING PROVIDED FOR ALL DIMENSIONS. 8. SEE DRAWING PROVIDED FOR ALL DIMENSIONS. 9. SEE DRAWING PROVIDED FOR ALL DIMENSIONS. 10. SEE DRAWING PROVIDED FOR ALL DIMENSIONS. 11. SEE DRAWING PROVIDED FOR ALL DIMENSIONS. 12. SEE DRAWING PROVIDED FOR ALL DIMENSIONS. 13. SEE DRAWING PROVIDED FOR ALL DIMENSIONS. 14. SEE DRAWING PROVIDED FOR ALL DIMENSIONS. 15. SEE DRAWING PROVIDED FOR ALL DIMENSIONS. 16. SEE DRAWING PROVIDED FOR ALL DIMENSIONS. 17. SEE DRAWING PROVIDED FOR ALL DIMENSIONS. 18. SEE DRAWING PROVIDED FOR ALL DIMENSIONS. 19. SEE DRAWING PROVIDED FOR ALL DIMENSIONS. 20. SEE DRAWING PROVIDED FOR ALL DIMENSIONS. 21. SEE DRAWING PROVIDED FOR ALL DIMENSIONS. 22. SEE DRAWING PROVIDED FOR ALL DIMENSIONS. 23. SEE DRAWING PROVIDED FOR ALL DIMENSIONS. 24. SEE DRAWING PROVIDED FOR ALL DIMENSIONS. 25. SEE DRAWING PROVIDED FOR ALL DIMENSIONS. 26. SEE DRAWING PROVIDED FOR ALL DIMENSIONS. 27. SEE DRAWING PROVIDED FOR ALL DIMENSIONS. 28. SEE DRAWING PROVIDED FOR ALL DIMENSIONS. 29. SEE DRAWING PROVIDED FOR ALL DIMENSIONS. 30. SEE DRAWING PROVIDED FOR ALL DIMENSIONS. 31. SEE DRAWING PROVIDED FOR ALL DIMENSIONS. 32. SEE DRAWING PROVIDED FOR ALL DIMENSIONS. 33. SEE DRAWING PROVIDED FOR ALL DIMENSIONS. 34. SEE DRAWING PROVIDED FOR ALL DIMENSIONS. 35. SEE DRAWING PROVIDED FOR ALL DIMENSIONS. 36. SEE DRAWING PROVIDED FOR ALL DIMENSIONS. 37. SEE DRAWING PROVIDED FOR ALL DIMENSIONS. 38. SEE DRAWING PROVIDED FOR ALL DIMENSIONS. 39. SEE DRAWING PROVIDED FOR ALL DIMENSIONS. 40. SEE DRAWING PROVIDED FOR ALL DIMENSIONS. 41. SEE DRAWING PROVIDED FOR ALL DIMENSIONS. 42. SEE DRAWING PROVIDED FOR ALL DIMENSIONS. 43. SEE DRAWING PROVIDED FOR ALL DIMENSIONS. 44. SEE DRAWING PROVIDED FOR ALL DIMENSIONS. 45. SEE DRAWING PROVIDED FOR ALL DIMENSIONS. 46. SEE DRAWING PROVIDED FOR ALL DIMENSIONS. 47. SEE DRAWING PROVIDED FOR ALL DIMENSIONS. 48. SEE DRAWING PROVIDED FOR ALL DIMENSIONS. 49. SEE DRAWING PROVIDED FOR ALL DIMENSIONS. 50. SEE DRAWING PROVIDED FOR ALL DIMENSIONS. 51. SEE DRAWING PROVIDED FOR ALL DIMENSIONS. 52. SEE DRAWING PROVIDED FOR ALL DIMENSIONS. 53. SEE DRAWING PROVIDED FOR ALL DIMENSIONS. 54. SEE DRAWING PROVIDED FOR ALL DIMENSIONS. 55. SEE DRAWING PROVIDED FOR ALL DIMENSIONS. 56. SEE DRAWING PROVIDED FOR ALL DIMENSIONS. 57. SEE DRAWING PROVIDED FOR ALL DIMENSIONS. 58. SEE DRAWING PROVIDED FOR ALL DIMENSIONS. 59. SEE DRAWING PROVIDED FOR ALL DIMENSIONS. 60. SEE DRAWING PROVIDED FOR ALL DIMENSIONS. 61. SEE DRAWING PROVIDED FOR ALL DIMENSIONS. 62. SEE DRAWING PROVIDED FOR ALL DIMENSIONS. 63. SEE DRAWING PROVIDED FOR ALL DIMENSIONS. 64. SEE DRAWING PROVIDED FOR ALL DIMENSIONS. 65. SEE DRAWING PROVIDED FOR ALL DIMENSIONS. 66. SEE DRAWING PROVIDED FOR ALL DIMENSIONS. 67. SEE DRAWING PROVIDED FOR ALL DIMENSIONS. 68. SEE DRAWING PROVIDED FOR ALL DIMENSIONS. 69. SEE DRAWING PROVIDED FOR ALL DIMENSIONS. 70. SEE DRAWING PROVIDED FOR ALL DIMENSIONS. 71. SEE DRAWING PROVIDED FOR ALL DIMENSIONS. 72. SEE DRAWING PROVIDED FOR ALL DIMENSIONS. 73. SEE DRAWING PROVIDED FOR ALL DIMENSIONS. 74. SEE DRAWING PROVIDED FOR ALL DIMENSIONS. 75. SEE DRAWING PROVIDED FOR ALL DIMENSIONS. 76. SEE DRAWING PROVIDED FOR ALL DIMENSIONS. 77. SEE DRAWING PROVIDED FOR ALL DIMENSIONS. 78. SEE DRAWING PROVIDED FOR ALL DIMENSIONS. 79. SEE DRAWING PROVIDED FOR ALL DIMENSIONS. 80. SEE DRAWING PROVIDED FOR ALL DIMENSIONS. 81. SEE DRAWING PROVIDED FOR ALL DIMENSIONS. 82. SEE DRAWING PROVIDED FOR ALL DIMENSIONS. 83. SEE DRAWING PROVIDED FOR ALL DIMENSIONS. 84. SEE DRAWING PROVIDED FOR ALL DIMENSIONS. 85. SEE DRAWING PROVIDED FOR ALL DIMENSIONS. 86. SEE DRAWING PROVIDED FOR ALL DIMENSIONS. 87. SEE DRAWING PROVIDED FOR ALL DIMENSIONS. 88. SEE DRAWING PROVIDED FOR ALL DIMENSIONS. 89. SEE DRAWING PROVIDED FOR ALL DIMENSIONS. 90. SEE DRAWING PROVIDED FOR ALL DIMENSIONS. 91. SEE DRAWING PROVIDED FOR ALL DIMENSIONS. 92. SEE DRAWING PROVIDED FOR ALL DIMENSIONS. 93. SEE DRAWING PROVIDED FOR ALL DIMENSIONS. 94. SEE DRAWING PROVIDED FOR ALL DIMENSIONS. 95. SEE DRAWING PROVIDED FOR ALL DIMENSIONS. 96. SEE DRAWING PROVIDED FOR ALL DIMENSIONS. 97. SEE DRAWING PROVIDED FOR ALL DIMENSIONS. 98. SEE DRAWING PROVIDED FOR ALL DIMENSIONS. 99. SEE DRAWING PROVIDED FOR ALL DIMENSIONS. 100. SEE DRAWING PROVIDED FOR ALL DIMENSIONS. 101. SEE DRAWING PROVIDED FOR ALL DIMENSIONS. 102. SEE DRAWING PROVIDED FOR ALL DIMENSIONS. 103. SEE DRAWING PROVIDED FOR ALL DIMENSIONS. 104. SEE DRAWING PROVIDED FOR ALL DIMENSIONS. 105. SEE DRAWING PROVIDED FOR ALL DIMENSIONS. 106. SEE DRAWING PROVIDED FOR ALL DIMENSIONS. 107. SEE DRAWING PROVIDED FOR ALL DIMENSIONS. 108. SEE DRAWING PROVIDED FOR ALL DIMENSIONS. 109. SEE DRAWING PROVIDED FOR ALL DIMENSIONS. 110. SEE DRAWING PROVIDED FOR ALL DIMENSIONS. 111. SEE DRAWING PROVIDED FOR ALL DIMENSIONS. 112. SEE DRAWING PROVIDED FOR ALL DIMENSIONS. 113. SEE DRAWING PROVIDED FOR ALL DIMENSIONS. 114. SEE DRAWING PROVIDED FOR ALL DIMENSIONS. 115. SEE DRAWING PROVIDED FOR ALL DIMENSIONS. 116. SEE DRAWING PROVIDED FOR ALL DIMENSIONS. 117. SEE DRAWING PROVIDED FOR ALL DIMENSIONS. 118. SEE DRAWING PROVIDED FOR ALL DIMENSIONS. 119. SEE DRAWING PROVIDED FOR ALL DIMENSIONS. 120. SEE DRAWING PROVIDED FOR ALL DIMENSIONS. 121. SEE DRAWING PROVIDED FOR ALL DIMENSIONS. 122. SEE DRAWING PROVIDED FOR ALL DIMENSIONS. 123. SEE DRAWING PROVIDED FOR ALL DIMENSIONS. 124. SEE DRAWING PROVIDED FOR ALL DIMENSIONS. 125. SEE DRAWING PROVIDED FOR ALL DIMENSIONS. 126. SEE DRAWING PROVIDED FOR ALL DIMENSIONS. 127. SEE DRAWING PROVIDED FOR ALL DIMENSIONS. 128. SEE DRAWING PROVIDED FOR ALL DIMENSIONS. 129. SEE DRAWING PROVIDED FOR ALL DIMENSIONS. 130. SEE DRAWING PROVIDED FOR ALL DIMENSIONS. 131. SEE DRAWING PROVIDED FOR ALL DIMENSIONS. 132. SEE DRAWING PROVIDED FOR ALL DIMENSIONS. 133. SEE DRAWING PROVIDED FOR ALL DIMENSIONS. 134. SEE DRAWING PROVIDED FOR ALL DIMENSIONS. 135. SEE DRAWING PROVIDED FOR ALL DIMENSIONS. 136. SEE DRAWING PROVIDED FOR ALL DIMENSIONS. 137. SEE DRAWING PROVIDED FOR ALL DIMENSIONS. 138. SEE DRAWING PROVIDED FOR ALL DIMENSIONS. 139. SEE DRAWING PROVIDED FOR ALL DIMENSIONS. 140. SEE DRAWING PROVIDED FOR ALL DIMENSIONS. 141. SEE DRAWING PROVIDED FOR ALL DIMENSIONS. 142. SEE DRAWING PROVIDED FOR ALL DIMENSIONS. 143. SEE DRAWING PROVIDED FOR ALL DIMENSIONS. 144. SEE DRAWING PROVIDED FOR ALL DIMENSIONS. 145. SEE DRAWING PROVIDED FOR ALL DIMENSIONS. 146. SEE DRAWING PROVIDED FOR ALL DIMENSIONS. 147. SEE DRAWING PROVIDED FOR ALL DIMENSIONS. 148. SEE DRAWING PROVIDED FOR ALL DIMENSIONS. 149. SEE DRAWING PROVIDED FOR ALL DIMENSIONS. 150. SEE DRAWING PROVIDED FOR ALL DIMENSIONS. 151. SEE DRAWING PROVIDED FOR ALL DIMENSIONS. 152. SEE DRAWING PROVIDED FOR ALL DIMENSIONS. 153. SEE DRAWING PROVIDED FOR ALL DIMENSIONS. 154. SEE DRAWING PROVIDED FOR ALL DIMENSIONS. 155. SEE DRAWING PROVIDED FOR ALL DIMENSIONS. 156. SEE DRAWING PROVIDED FOR ALL DIMENSIONS. 157. SEE DRAWING PROVIDED FOR ALL DIMENSIONS. 158. SEE DRAWING PROVIDED FOR ALL DIMENSIONS. 159. SEE DRAWING PROVIDED FOR ALL DIMENSIONS. 160. SEE DRAWING PROVIDED FOR ALL DIMENSIONS. 161. SEE DRAWING PROVIDED FOR ALL DIMENSIONS. 162. SEE DRAWING PROVIDED FOR ALL DIMENSIONS. 163. SEE DRAWING PROVIDED FOR ALL DIMENSIONS. 164. SEE DRAWING PROVIDED FOR ALL DIMENSIONS. 165. SEE DRAWING PROVIDED FOR ALL DIMENSIONS. 166. SEE DRAWING PROVIDED FOR ALL DIMENSIONS. 167. SEE DRAWING PROVIDED FOR ALL DIMENSIONS. 168. SEE DRAWING PROVIDED FOR ALL DIMENSIONS. 169. SEE DRAWING PROVIDED FOR ALL DIMENSIONS. 170. SEE DRAWING PROVIDED FOR ALL DIMENSIONS. 171. SEE DRAWING PROVIDED FOR ALL DIMENSIONS. 172. SEE DRAWING PROVIDED FOR ALL DIMENSIONS. 173. SEE DRAWING PROVIDED FOR ALL DIMENSIONS. 174. SEE DRAWING PROVIDED FOR ALL DIMENSIONS. 175. SEE DRAWING PROVIDED FOR ALL DIMENSIONS. 176. SEE DRAWING PROVIDED FOR ALL DIMENSIONS. 177. SEE DRAWING PROVIDED FOR ALL DIMENSIONS. 178. SEE DRAWING PROVIDED FOR ALL DIMENSIONS. 179. SEE DRAWING PROVIDED FOR ALL DIMENSIONS. 180. SEE DRAWING PROVIDED FOR ALL DIMENSIONS. 181. SEE DRAWING PROVIDED FOR ALL DIMENSIONS. 182. SEE DRAWING PROVIDED FOR ALL DIMENSIONS. 183. SEE DRAWING PROVIDED FOR ALL DIMENSIONS. 184. SEE DRAWING PROVIDED FOR ALL DIMENSIONS. 185. SEE DRAWING PROVIDED FOR ALL DIMENSIONS. 186. SEE DRAWING PROVIDED FOR ALL DIMENSIONS. 187. SEE DRAWING PROVIDED FOR ALL DIMENSIONS. 188. SEE DRAWING PROVIDED FOR ALL DIMENSIONS. 189. SEE DRAWING PROVIDED FOR ALL DIMENSIONS. 190. SEE DRAWING PROVIDED FOR ALL DIMENSIONS. 191. SEE DRAWING PROVIDED FOR ALL DIMENSIONS. 192. SEE DRAWING PROVIDED FOR ALL DIMENSIONS. 193. SEE DRAWING PROVIDED FOR ALL DIMENSIONS. 194. SEE DRAWING PROVIDED FOR ALL DIMENSIONS. 195. SEE DRAWING PROVIDED FOR ALL DIMENSIONS. 196. SEE DRAWING PROVIDED FOR ALL DIMENSIONS. 197. SEE DRAWING PROVIDED FOR ALL DIMENSIONS. 198. SEE DRAWING PROVIDED FOR ALL DIMENSIONS. 199. SEE DRAWING PROVIDED FOR ALL DIMENSIONS. 200. SEE DRAWING PROVIDED FOR ALL DIMENSIONS. 201. SEE DRAWING PROVIDED FOR ALL DIMENSIONS. 202. SEE DRAWING PROVIDED FOR ALL DIMENSIONS. 203. SEE DRAWING PROVIDED FOR ALL DIMENSIONS. 204. SEE DRAWING PROVIDED FOR ALL DIMENSIONS. 205. SEE DRAWING PROVIDED FOR ALL DIMENSIONS. 206. SEE DRAWING PROVIDED FOR ALL DIMENSIONS. 207. SEE DRAWING PROVIDED FOR ALL DIMENSIONS. 208. SEE DRAWING PROVIDED FOR ALL DIMENSIONS. 209. SEE DRAWING PROVIDED FOR ALL DIMENSIONS. 210. SEE DRAWING PROVIDED FOR ALL DIMENSIONS. 211. SEE DRAWING PROVIDED FOR ALL DIMENSIONS. 212. SEE DRAWING PROVIDED FOR ALL DIMENSIONS. 213. SEE DRAWING PROVIDED FOR ALL DIMENSIONS. 214. SEE DRAWING PROVIDED FOR ALL DIMENSIONS. 215. SEE DRAWING PROVIDED FOR ALL DIMENSIONS. 216. SEE DRAWING PROVIDED FOR ALL DIMENSIONS. 217. SEE DRAWING PROVIDED FOR ALL DIMENSIONS. 218. SEE DRAWING PROVIDED FOR ALL DIMENSIONS. 219. SEE DRAWING PROVIDED FOR ALL DIMENSIONS. 220. SEE DRAWING PROVIDED FOR ALL DIMENSIONS. 221. SEE DRAWING PROVIDED FOR ALL DIMENSIONS. 222. SEE DRAWING PROVIDED FOR ALL DIMENSIONS. 223. SEE DRAWING PROVIDED FOR ALL DIMENSIONS. 224. SEE DRAWING PROVIDED FOR ALL DIMENSIONS. 225. SEE DRAWING PROVIDED FOR ALL DIMENSIONS. 226. SEE DRAWING PROVIDED FOR ALL DIMENSIONS. 227. SEE DRAWING PROVIDED FOR ALL DIMENSIONS. 228. SEE DRAWING PROVIDED FOR ALL DIMENSIONS. 229. SEE DRAWING PROVIDED FOR ALL DIMENSIONS. 230. SEE DRAWING PROVIDED FOR ALL DIMENSIONS. 231. SEE DRAWING PROVIDED FOR ALL DIMENSIONS. 232. SEE DRAWING PROVIDED FOR ALL DIMENSIONS. 233. SEE DRAWING PROVIDED FOR ALL DIMENSIONS. 234. SEE DRAWING PROVIDED FOR ALL DIMENSIONS. 235. SEE DRAWING PROVIDED FOR ALL DIMENSIONS. 236. SEE DRAWING PROVIDED FOR ALL DIMENSIONS. 237. SEE DRAWING PROVIDED FOR ALL DIMENSIONS. 238. SEE DRAWING PROVIDED FOR ALL DIMENSIONS. 239. SEE DRAWING PROVIDED FOR ALL DIMENSIONS. 240. SEE DRAWING PROVIDED FOR ALL DIMENSIONS. 241. SEE DRAWING PROVIDED FOR ALL DIMENSIONS. 242. SEE DRAWING PROVIDED FOR ALL DIMENSIONS. 243. SEE DRAWING PROVIDED FOR ALL DIMENSIONS. 244. SEE DRAWING PROVIDED FOR ALL DIMENSIONS. 245. SEE DRAWING PROVIDED FOR ALL DIMENSIONS. 246. SEE DRAWING PROVIDED FOR ALL DIMENSIONS. 247. SEE DRAWING PROVIDED FOR ALL DIMENSIONS. 248. SEE DRAWING PROVIDED FOR ALL DIMENSIONS. 249. SEE DRAWING PROVIDED FOR ALL DIMENSIONS. 250. SEE DRAWING PROVIDED FOR ALL DIMENSIONS. 251. SEE DRAWING PROVIDED FOR ALL DIMENSIONS. 252. SEE DRAWING PROVIDED FOR ALL DIMENSIONS. 253. SEE DRAWING PROVIDED FOR ALL DIMENSIONS. 254. SEE DRAWING PROVIDED FOR ALL DIMENSIONS. 255. SEE DRAWING PROVIDED FOR ALL DIMENSIONS. 256. SEE DRAWING PROVIDED FOR ALL DIMENSIONS. 257. SEE DRAWING PROVIDED FOR ALL DIMENSIONS. 258. SEE DRAWING PROVIDED FOR ALL DIMENSIONS. 259. SEE DRAWING PROVIDED FOR ALL DIMENSIONS. 260. SEE DRAWING PROVIDED FOR ALL DIMENSIONS. 261. SEE DRAWING PROVIDED FOR ALL DIMENSIONS. 262. SEE DRAWING PROVIDED FOR ALL DIMENSIONS. 263. SEE DRAWING PROVIDED FOR ALL DIMENSIONS. 264. SEE DRAWING PROVIDED FOR ALL DIMENSIONS. 265. SEE DRAWING PROVIDED FOR ALL DIMENSIONS. 266. SEE DRAWING PROVIDED FOR ALL DIMENSIONS. 267. SEE DRAWING PROVIDED FOR ALL DIMENSIONS. 268. SEE DRAWING PROVIDED FOR ALL DIMENSIONS. 269. SEE DRAWING PROVIDED FOR ALL DIMENSIONS. 270. SEE DRAWING PROVIDED FOR ALL DIMENSIONS. 271. SEE DRAWING PROVIDED FOR ALL DIMENSIONS. 272. SEE DRAWING PROVIDED FOR ALL DIMENSIONS. 273. SEE DRAWING PROVIDED FOR ALL DIMENSIONS. 274. SEE DRAWING PROVIDED FOR ALL DIMENSIONS. 275. SEE DRAWING PROVIDED FOR ALL DIMENSIONS. 276. SEE DRAWING PROVIDED FOR ALL DIMENSIONS. 277. SEE DRAWING PROVIDED FOR ALL DIMENSIONS. 278. SEE DRAWING PROVIDED FOR ALL DIMENSIONS. 279. SEE DRAWING PROVIDED FOR ALL DIMENSIONS. 280. SEE DRAWING PROVIDED FOR ALL DIMENSIONS. 281. SEE DRAWING PROVIDED FOR ALL DIMENSIONS. 282. SEE DRAWING PROVIDED FOR ALL DIMENSIONS. 283. SEE DRAWING PROVIDED FOR ALL DIMENSIONS. 284. SEE DRAWING PROVIDED FOR ALL DIMENSIONS. 285. SEE DRAWING PROVIDED FOR ALL DIMENSIONS. 286. SEE DRAWING PROVIDED FOR ALL DIMENSIONS. 287. SEE DRAWING PROVIDED FOR ALL DIMENSIONS. 288. SEE DRAWING PROVIDED FOR ALL DIMENSIONS. 289. SEE DRAWING PROVIDED FOR ALL DIMENSIONS. 290. SEE DRAWING PROVIDED FOR ALL DIMENSIONS. 291. SEE DRAWING PROVIDED FOR ALL DIMENSIONS. 292. SEE DRAWING PROVIDED FOR ALL DIMENSIONS. 293. SEE DRAWING PROVIDED FOR ALL DIMENSIONS. 294. SEE DRAWING PROVIDED FOR ALL DIMENSIONS. 295. SEE DRAWING PROVIDED FOR ALL DIMENSIONS. 296. SEE DRAWING PROVIDED FOR ALL DIMENSIONS. 297. SEE DRAWING PROVIDED FOR ALL DIMENSIONS. 298. SEE DRAWING PROVIDED FOR ALL DIMENSIONS. 299. SEE DRAWING PROVIDED FOR ALL DIMENSIONS. 300. SEE DRAWING PROVIDED FOR ALL DIMENSIONS. 301. SEE DRAWING PROVIDED FOR ALL DIMENSIONS. 302. SEE DRAWING PROVIDED FOR ALL DIMENSIONS. 303. SEE DRAWING PROVIDED FOR ALL DIMENSIONS. 304. SEE DRAWING PROVIDED FOR ALL DIMENSIONS. 305. SEE DRAWING PROVIDED FOR ALL DIMENSIONS. 306. SEE DRAWING PROVIDED FOR ALL DIMENSIONS. 307. SEE DRAWING PROVIDED FOR ALL DIMENSIONS. 308. SEE DRAWING PROVIDED FOR ALL DIMENSIONS. 309. SEE DRAWING PROVIDED FOR ALL DIMENSIONS. 310. SEE DRAWING PROVIDED FOR ALL DIMENSIONS. 311. SEE DRAWING PROVIDED FOR ALL DIMENSIONS. 312. SEE DRAWING PROVIDED FOR ALL DIMENSIONS. 313. SEE DRAWING PROVIDED FOR ALL DIMENSIONS. 314. SEE DRAWING PROVIDED FOR ALL DIMENSIONS. 315. SEE DRAWING PROVIDED FOR ALL DIMENSIONS. 316. SEE DRAWING PROVIDED FOR ALL DIMENSIONS. 317. SEE DRAWING PROVIDED FOR ALL DIMENSIONS. 318. SEE DRAWING PROVIDED FOR ALL DIMENSIONS. 319. SEE DRAWING PROVIDED FOR ALL DIMENSIONS. 320. SEE DRAWING PROVIDED FOR ALL DIMENSIONS. 321. SEE DRAWING PROVIDED FOR ALL DIMENSIONS. 322. SEE DRAWING PROVIDED FOR ALL DIMENSIONS. 323. SEE DRAWING PROVIDED FOR ALL DIMENSIONS. 324. SEE DRAWING PROVIDED FOR ALL DIMENSIONS. 325. SEE DRAWING PROVIDED FOR ALL DIMENSIONS. 326. SEE DRAWING PROVIDED FOR ALL DIMENSIONS. 327. SEE DRAWING PROVIDED FOR ALL DIMENSIONS. 328. SEE DRAWING PROVIDED FOR ALL DIMENSIONS. 329. SEE DRAWING PROVIDED FOR ALL DIMENSIONS. 330. SEE DRAWING PROVIDED FOR ALL DIMENSIONS. 331. SEE DRAWING PROVIDED FOR ALL DIMENSIONS. 332. SEE DRAWING PROVIDED FOR ALL DIMENSIONS. 333. SEE DRAWING PROVIDED FOR ALL DIMENSIONS. 334. SEE DRAWING PROVIDED FOR ALL DIMENSIONS. 335. SEE DRAWING PROVIDED FOR ALL DIMENSIONS. 336. SEE DRAWING PROVIDED FOR ALL DIMENSIONS. 337. SEE DRAWING PROVIDED FOR ALL DIMENSIONS. 338. SEE DRAWING PROVIDED FOR ALL DIMENSIONS. 339. SEE DRAWING PROVIDED FOR ALL DIMENSIONS. 340. SEE DRAWING PROVIDED FOR ALL DIMENSIONS. 341. SEE DRAWING PROVIDED FOR ALL DIMENSIONS. 342. SEE DRAWING PROVIDED FOR ALL DIMENSIONS. 343. SEE DRAWING PROVIDED FOR ALL DIMENSIONS. 344. SEE DRAWING PROVIDED FOR ALL DIMENSIONS. 345. SEE DRAWING PROVIDED FOR ALL DIMENSIONS. 346. SEE DRAWING PROVIDED FOR ALL DIMENSIONS. 347. SEE DRAWING PROVIDED FOR ALL DIMENSIONS. 348. SEE DRAWING PROVIDED FOR ALL DIMENSIONS. 349. SEE DRAWING PROVIDED FOR ALL DIMENSIONS. 350. SEE DRAWING PROVIDED FOR ALL DIMENSIONS. 351. SEE DRAWING PROVIDED FOR ALL DIMENSIONS. 352. SEE DRAWING PROVIDED FOR ALL DIMENSIONS. 353. SEE DRAWING PROVIDED FOR ALL DIMENSIONS. 354. SEE DRAWING PROVIDED FOR ALL DIMENSIONS. 355. SEE DRAWING PROVIDED FOR ALL DIMENSIONS. 356. SEE DRAWING PROVIDED FOR ALL DIMENSIONS. 357. SEE DRAWING PROVIDED FOR ALL DIMENSIONS. 358. SEE DRAWING PROVIDED FOR ALL DIMENSIONS. 359. SEE DRAWING PROVIDED FOR ALL DIMENSIONS. 360. SEE DRAWING PROVIDED FOR ALL DIMENSIONS. 361. SEE DRAWING PROVIDED FOR ALL DIMENSIONS. 362. SEE DRAWING PROVIDED FOR ALL DIMENSIONS. 363. SEE DRAWING PROVIDED FOR ALL DIMENSIONS. 364. SEE DRAWING PROVIDED FOR ALL DIMENSIONS. 365. SEE DRAWING PROVIDED FOR ALL DIMENSIONS. 366. SEE DRAWING PROVIDED FOR ALL DIMENSIONS. 367. SEE DRAWING PROVIDED FOR ALL DIMENSIONS. 368. SEE DRAWING PROVIDED FOR ALL DIMENSIONS. 369. SEE DRAWING PROVIDED FOR ALL DIMENSIONS. 370. SEE DRAWING PROVIDED FOR ALL DIMENSIONS. 371. SEE DRAWING PROVIDED FOR ALL DIMENSIONS. 372. SEE DRAWING PROVIDED FOR ALL DIMENSIONS. 373. SEE DRAWING PROVIDED FOR ALL DIMENSIONS. 374. SEE DRAWING PROVIDED FOR ALL DIMENSIONS. 375. SEE DRAWING PROVIDED FOR ALL DIMENSIONS. 376. SEE DRAWING PROVIDED FOR ALL DIMENSIONS. 377. SEE DRAWING PROVIDED FOR ALL DIMENSIONS. 378. SEE DRAWING PROVIDED FOR ALL DIMENSIONS. 379. SEE DRAWING PROVIDED FOR ALL DIMENSIONS. 380. SEE DRAWING PROVIDED FOR ALL DIMENSIONS. 381. SEE DRAWING PROVIDED FOR ALL DIMENSIONS. 382. SEE DRAWING PROVIDED FOR ALL DIMENSIONS. 383. SEE DRAWING PROVIDED FOR ALL DIMENSIONS. 384. SEE DRAWING PROVIDED FOR ALL DIMENSIONS. 385. SEE DRAWING PROVIDED FOR ALL DIMENSIONS. 386. SEE DRAWING PROVIDED FOR ALL DIMENSIONS. 387. SEE DRAWING PROVIDED FOR ALL DIMENSIONS. 388. SEE DRAWING PROVIDED FOR ALL DIMENSIONS. 389. SEE DRAWING PROVIDED FOR ALL DIMENSIONS. 390. SEE DRAWING PROVIDED FOR ALL DIMENSIONS. 391. SEE DRAWING PROVIDED FOR ALL DIMENSIONS. 392. SEE DRAWING PROVIDED FOR ALL DIMENSIONS. 393. SEE DRAWING PROVIDED FOR ALL DIMENSIONS. 394. SEE DRAWING PROVIDED FOR ALL DIMENSIONS. 395. SEE DRAWING PROVIDED FOR ALL DIMENSIONS. 396. SEE DRAWING PROVIDED FOR ALL DIMENSIONS. 397. SEE DRAWING PROVIDED FOR ALL DIMENSIONS. 398. SEE DRAWING PROVIDED FOR ALL DIMENSIONS. 399. SEE DRAWING PROVIDED FOR ALL DIMENSIONS. 400. SEE DRAWING PROVIDED FOR ALL DIMENSIONS. 401. SEE DRAWING PROVIDED FOR ALL DIMENSIONS. 402. SEE DRAWING PROVIDED FOR ALL DIMENSIONS. 403. SEE DRAWING PROVIDED FOR ALL DIMENSIONS. 404. SEE DRAWING PROVIDED FOR ALL DIMENSIONS. 405. SEE DRAWING PROVIDED FOR ALL DIMENSIONS. 406. SEE DRAWING PROVIDED FOR ALL DIMENSIONS. 407. SEE DRAWING PROVIDED FOR ALL DIMENSIONS. 408. SEE DRAWING PROVIDED FOR ALL DIMENSIONS. 409. SEE DRAWING PROVIDED FOR ALL DIMENSIONS. 410. SEE DRAWING PROVIDED FOR ALL DIMENSIONS. 411. SEE DRAWING PROVIDED FOR ALL DIMENSIONS. 412. SEE DRAWING PROVIDED FOR ALL DIMENSIONS. 413. SEE DRAWING PROVIDED FOR ALL DIMENSIONS. 414. SEE DRAWING PROVIDED FOR ALL DIMENSIONS. 415. SEE DRAWING PROVIDED FOR ALL DIMENSIONS. 416. SEE DRAWING PROVIDED FOR ALL DIMENSIONS. 417. SEE DRAWING PROVIDED FOR ALL DIMENSIONS. 418. SEE DRAWING PROVIDED FOR ALL DIMENSIONS. 419. SEE DRAWING PROVIDED FOR ALL DIMENSIONS. 420. SEE DRAWING PROVIDED FOR ALL DIMENSIONS. 421. SEE DRAWING PROVIDED FOR ALL DIMENSIONS. 422. SEE DRAWING PROVIDED FOR ALL DIMENSIONS. 423. SEE DRAWING PROVIDED FOR ALL DIMENSIONS. 424. SEE DRAWING PROVIDED FOR ALL DIMENSIONS. 425. SEE DRAWING PROVIDED FOR ALL DIMENSIONS. 426. SEE DRAWING PROVIDED FOR ALL DIMENSIONS. 427. SEE DRAWING PROVIDED FOR ALL DIMENSIONS. 428. SEE DRAWING PROVIDED FOR ALL DIMENSIONS. 429. SEE DRAWING PROVIDED FOR ALL DIMENSIONS. 430. SEE DRAWING PROVIDED FOR ALL DIMENSIONS. 431. SEE DRAWING PROVIDED FOR ALL DIMENSIONS. 432. SEE DRAWING PROVIDED FOR ALL DIMENSIONS. 433. SEE DRAWING PROVIDED FOR ALL DIMENSIONS. 434. SEE DRAWING PROVIDED FOR ALL DIMENSIONS. 435. SEE DRAWING PROVIDED FOR ALL DIMENSIONS. 436. SEE DRAWING PROVIDED FOR ALL DIMENSIONS. 437. SEE DRAWING PROVIDED FOR ALL DIMENSIONS. 438. SEE DRAWING PROVIDED FOR ALL DIMENSIONS. 439. SEE DRAWING PROVIDED FOR ALL DIMENSIONS. 440. SEE DRAWING PROVIDED FOR ALL DIMENSIONS. 441. SEE DRAWING PROVIDED FOR ALL DIMENSIONS. 442. SEE DRAWING PROVIDED FOR ALL DIMENSIONS. 443. SEE DRAWING PROVIDED FOR ALL DIMENSIONS. 444. SEE DRAWING PROVIDED FOR ALL DIMENSIONS. 445. SEE DRAWING PROVIDED FOR ALL DIMENSIONS. 446. SEE DRAWING PROVIDED FOR ALL DIMENSIONS. 447. SEE DRAWING PROVIDED FOR ALL DIMENSIONS. 448. SEE DRAWING PROVIDED FOR ALL DIMENSIONS. 449. SEE DRAWING PROVIDED FOR ALL DIMENSIONS. 450. SEE DRAWING PROVIDED FOR ALL DIMENSIONS. 451. SEE DRAWING PROVIDED FOR ALL DIMENSIONS. 452. SEE DRAWING PROVIDED FOR ALL DIMENSIONS. 453. SEE DRAWING PROVIDED FOR ALL DIMENSIONS. 454. SEE DRAWING PROVIDED FOR ALL DIMENSIONS. 455. SEE DRAWING PROVIDED FOR ALL DIMENSIONS. 456. SEE DRAWING PROVIDED FOR ALL DIMENSIONS. 457. SEE DRAWING PROVIDED FOR ALL DIMENSIONS. 458. SEE DRAWING PROVIDED FOR ALL DIMENSIONS. 459. SEE DRAWING PROVIDED FOR ALL DIMENSIONS. 460. SEE DRAWING PROVIDED FOR ALL DIMENSIONS. 461. SEE DRAWING PROVIDED FOR ALL DIMENSIONS. 462. SEE DRAWING PROVIDED FOR ALL DIMENSIONS. 463. SEE DRAWING PROVIDED FOR ALL DIMENSIONS. 464. SEE DRAWING PROVIDED FOR ALL DIMENSIONS. 465. SEE DRAWING PROVIDED FOR ALL DIMENSIONS. 466. SEE DRAWING PROVIDED FOR ALL DIMENSIONS. 467. SEE DRAWING PROVIDED FOR ALL DIMENSIONS. 468. SEE DRAWING PROVIDED FOR ALL DIMENSIONS. 469. SEE DRAWING PROVIDED FOR ALL DIMENSIONS. 470. SEE DRAWING PROVIDED FOR ALL DIMENSIONS. 471. SEE DRAWING PROVIDED FOR ALL DIMENSIONS. 472. SEE DRAWING PROVIDED FOR ALL DIMENSIONS. 473. SEE DRAWING PROVIDED FOR ALL DIMENSIONS. 474. SEE DRAWING PROVIDED FOR ALL DIMENSIONS. 475. SEE DRAWING PROVIDED FOR ALL DIMENSIONS. 476. SEE DRAWING PROVIDED FOR ALL DIMENSIONS. 477. SEE DRAWING PROVIDED FOR ALL DIMENSIONS. 478. SEE DRAWING PROVIDED FOR ALL DIMENSIONS. 479. SEE DRAWING PROVIDED FOR ALL DIMENSIONS. 480. SEE DRAWING PROVIDED FOR ALL DIMENSIONS. 481. SEE DRAWING PROVIDED FOR ALL DIMENSIONS. 482. SEE DRAWING PROVIDED FOR ALL DIMENSIONS. 483. SEE DRAWING PROVIDED FOR ALL DIMENSIONS. 484. SEE DRAWING PROVIDED FOR ALL DIMENSIONS. 485. SEE DRAWING PROVIDED FOR ALL DIMENSIONS. 486. SEE DRAWING PROVIDED FOR ALL DIMENSIONS. 487. SEE DRAWING PROVIDED FOR ALL DIMENSIONS. 488. SEE DRAWING PROVIDED FOR ALL DIMENSIONS. 489. SEE DRAWING PROVIDED FOR ALL DIMENSIONS. 490. SEE DRAWING PROVIDED FOR ALL DIMENSIONS. 491. SEE DRAWING PROVIDED FOR ALL DIMENSIONS. 492. SEE DRAWING PROVIDED FOR ALL DIMENSIONS. 493. SEE DRAWING PROVIDED FOR ALL DIMENSIONS. 494. SEE DRAWING PROVIDED FOR ALL DIMENSIONS. 495. SEE DRAWING PROVIDED FOR ALL DIMENSIONS. 496. SEE DRAWING PROVIDED FOR ALL DIMENSIONS. 497. SEE DRAWING PROVIDED FOR ALL DIMENSIONS. 498. SEE DRAWING PROVIDED FOR ALL DIMENSIONS. 499. SEE DRAWING PROVIDED FOR ALL DIMENSIONS. 500. SEE DRAWING PROVIDED FOR ALL DIMENSIONS. 501. SEE DRAWING PROVIDED FOR ALL DIMENSIONS. 502. SEE DRAWING PROVIDED FOR ALL DIMENSIONS. 503. SEE DRAWING PROVIDED FOR ALL DIMENSIONS. 504. SEE DRAWING PROVIDED FOR ALL DIMENSIONS. 505. SEE DRAWING PROVIDED FOR ALL DIMENSIONS. 506. SEE DRAWING PROVIDED FOR ALL DIMENSIONS. 507. SEE DRAWING PROVIDED FOR ALL DIMENSIONS. 508. SEE DRAWING PROVIDED FOR ALL DIMENSIONS. 509. SEE DRAWING PROVIDED FOR ALL DIMENSIONS. 510. SEE DRAWING PROVIDED FOR ALL DIMENSIONS. 511. SEE DRAWING PROVIDED FOR ALL DIMENSIONS. 512. SEE DRAWING PROVIDED FOR ALL DIMENSIONS. 513. SEE DRAWING PROVIDED FOR ALL DIMENSIONS. 514. SEE DRAWING PROVIDED FOR ALL DIMENSIONS. 515. SEE DRAWING PROVIDED FOR ALL DIMENSIONS. 516. SEE DRAWING PROVIDED FOR ALL DIMENSIONS. 517. SEE DRAWING PROVIDED FOR ALL DIMENSIONS. 518. SEE DRAWING PROVIDED FOR ALL DIMENSIONS. 519. SEE DRAWING PROVIDED FOR ALL DIMENSIONS. 520. SEE DRAWING PROVIDED FOR ALL DIMENSIONS. 521. SEE DRAWING PROVIDED FOR ALL DIMENSIONS. 522. SEE DRAWING PROVIDED FOR ALL DIMENSIONS. 523. SEE DRAWING PROVIDED FOR ALL DIMENSIONS. 524. SEE DRAWING PROVIDED FOR ALL DIMENSIONS. 525. SEE DRAWING PROVIDED FOR ALL DIMENSIONS. 526. SEE DRAWING PROVIDED FOR ALL DIMENSIONS. 527. SEE DRAWING PROVIDED FOR ALL DIMENSIONS. 528. SEE DRAWING PROVIDED FOR ALL DIMENSIONS. 529. SEE DRAWING PROVIDED FOR ALL DIMENSIONS. 530. SEE DRAWING PROVIDED FOR ALL DIMENSIONS. 531. SEE DRAWING PROVIDED FOR ALL DIMENSIONS. 532. SEE DRAWING PROVIDED FOR ALL DIMENSIONS. 533. SEE DRAWING PROVIDED FOR ALL DIMENSIONS. 534. SEE DRAWING PROVIDED FOR ALL DIMENSIONS. 535. SEE DRAWING PROVIDED FOR ALL DIMENSIONS. 536. SEE DRAWING PROVIDED FOR ALL DIMENSIONS. 537. SEE DRAWING PROVIDED FOR ALL DIMENSIONS. 538. SEE DRAWING PROVIDED FOR ALL DIMENSIONS. 539. SEE DRAWING PROVIDED FOR ALL DIMENSIONS. 540. SEE DRAWING PROVIDED FOR ALL DIMENSIONS. 541. SEE DRAWING PROVIDED FOR ALL DIMENSIONS. 542. SEE DRAWING PROVIDED FOR ALL DIMENSIONS. 543. SEE DRAWING PROVIDED FOR ALL DIMENSIONS. 544. SEE DRAWING PROVIDED FOR ALL DIMENSIONS. 545. SEE DRAWING PROVIDED FOR ALL DIMENSIONS. 546. SEE DRAWING PROVIDED FOR ALL DIMENSIONS. 547. SEE DRAWING PROVIDED FOR ALL DIMENSIONS. 548. SEE DRAWING PROVIDED FOR ALL DIMENSIONS. 549. SEE DRAWING PROVIDED FOR ALL DIMENSIONS. 550. SEE DRAWING PROVIDED FOR ALL DIMENSIONS. 551. SEE DRAWING PROVIDED FOR ALL DIMENSIONS. 552. SEE DRAWING PROVIDED FOR ALL DIMENSIONS. 553. SEE DRAWING PROVIDED FOR ALL DIMENSIONS. 554. SEE DRAWING PROVIDED FOR ALL DIMENSIONS. 555. SEE DRAWING PROVIDED FOR ALL DIMENSIONS. 556. SEE DRAWING PROVIDED FOR ALL DIMENSIONS. 557. SEE DRAWING PROVIDED FOR ALL DIMENSIONS. 558. SEE DRAWING PROVIDED FOR ALL DIMENSIONS. 559. SEE DRAWING PROVIDED FOR ALL DIMENSIONS. 560. SEE DRAWING PROVIDED FOR ALL DIMENSIONS. 561. SEE DRAWING PROVIDED FOR ALL DIMENSIONS. 562. SEE DRAWING PROVIDED FOR ALL DIMENSIONS. 563. SEE DRAWING PROVIDED FOR ALL DIMENSIONS. 564. SEE DRAWING PROVIDED FOR ALL DIMENSIONS. 565. SEE DRAWING PROVIDED FOR ALL DIMENSIONS. 566. SEE DRAWING PROVIDED FOR ALL DIMENSIONS. 567. SEE DRAWING PROVIDED FOR ALL DIMENSIONS. 568. SEE DRAWING PROVIDED FOR ALL DIMENSIONS. 569. SEE DRAWING PROVIDED FOR ALL DIMENSIONS. 570. SEE DRAWING PROVIDED FOR ALL DIMENSIONS. 571. SEE DRAWING PROVIDED FOR ALL DIMENSIONS. 572. SEE DRAWING PROVIDED FOR ALL DIMENSIONS. 573. SEE DRAWING PROVIDED FOR ALL DIMENSIONS. 574. SEE DRAWING PROVIDED FOR ALL DIMENSIONS. 575. SEE DRAWING PROVIDED FOR ALL DIMENSIONS. 576. SEE DRAWING PROVIDED FOR ALL DIMENSIONS. 577. SEE DRAWING PROVIDED FOR ALL DIMENSIONS. 578. SEE DRAWING PROVIDED FOR ALL DIMENSIONS. 579. SEE DRAWING PROVIDED FOR ALL DIMENSIONS. 580. SEE DRAWING PROVIDED FOR ALL DIMENSIONS. 581. SEE DRAWING PROVIDED FOR ALL DIMENSIONS. 582. SEE DRAWING PROVIDED FOR ALL DIMENSIONS. 583. SEE DRAWING PROVIDED FOR ALL DIMENSIONS. 584. SEE DRAWING PROVIDED FOR ALL DIMENSIONS. 585. SEE DRAWING PROVIDED FOR ALL DIMENSIONS. 586. SEE DRAWING PROVIDED FOR ALL DIMENSIONS. 587. SEE DRAWING PROVIDED FOR ALL DIMENSIONS. 588. SEE DRAWING PROVIDED FOR ALL DIMENSIONS. 589. SEE DRAWING PROVIDED FOR ALL DIMENSIONS. 590. SEE DRAWING PROVIDED FOR ALL DIMENSIONS. 591. SEE DRAWING PROVIDED FOR ALL DIMENSIONS. 592. SEE DRAWING PROVIDED FOR ALL DIMENSIONS. 593. SEE DRAWING PROVIDED FOR ALL DIMENSIONS. 594. SEE DRAWING PROVIDED FOR ALL DIMENSIONS. 595. SEE DRAWING PROVIDED FOR ALL DIMENSIONS. 596. SEE DRAWING PROVIDED FOR ALL DIMENSIONS. 597. SEE DRAWING PROVIDED FOR ALL DIMENSIONS. 598. SEE DRAWING PROVIDED FOR ALL DIMENSIONS. 599. SEE DRAWING PROVIDED FOR ALL DIMENSIONS. 600. SEE DRAWING PROVIDED FOR ALL DIMENSIONS. 601. SEE DRAWING PROVIDED FOR ALL DIMENSIONS. 602. SEE DRAWING PROVIDED FOR ALL DIMENSIONS. 603. SEE DRAWING PROVIDED FOR ALL DIMENSIONS. 604. SEE DRAWING PROVIDED FOR ALL DIMENSIONS. 605. SEE DRAWING PROVIDED FOR ALL DIMENSIONS. 606. SEE DRAWING PROVIDED FOR ALL DIMENSIONS. 607. SEE DRAWING PROVIDED FOR ALL DIMENSIONS. 608. SEE DRAWING PROVIDED FOR ALL DIMENSIONS. 609. SEE DRAWING PROVIDED FOR ALL DIMENSIONS. 610. SEE DRAWING PROVIDED FOR ALL DIMENSIONS. 611. SEE DRAWING PROVIDED FOR ALL DIMENSIONS. 612. SEE DRAWING PROVIDED FOR ALL DIMENSIONS. 613. SEE DRAWING PROVIDED FOR ALL DIMENSIONS. 614. SEE DRAWING PROVIDED FOR ALL DIMENSIONS. 615. SEE DRAWING PROVIDED FOR ALL DIMENSIONS. 616. SEE DRAWING PROVIDED FOR ALL DIMENSIONS. 617. SEE DRAWING PROVIDED FOR ALL DIMENSIONS. 618. SEE DRAWING PROVIDED FOR ALL DIMENSIONS. 619. SEE DRAWING PROVIDED FOR ALL DIMENSIONS. 620. SEE DRAWING PROVIDED FOR ALL DIMENSIONS. 621. SEE DRAWING PROVIDED FOR ALL DIMENSIONS. 622. SEE DRAWING PROVIDED FOR ALL DIMENSIONS. 623. SEE DRAWING PROVIDED FOR ALL DIMENSIONS. 624. SEE DRAWING PROVIDED FOR ALL DIMENSIONS. 625. SEE DRAWING PROVIDED FOR ALL DIMENSIONS. 626. SEE DRAWING PROVIDED FOR ALL DIMENSIONS. 627. SEE DRAWING PROVIDED FOR ALL DIMENSIONS. 628. SEE DRAWING PROVIDED FOR ALL DIMENSIONS. 629. SEE DRAWING PROVIDED FOR ALL DIMENSIONS. 630. SEE DRAWING PROVIDED FOR ALL DIMENSIONS. 631. SEE DRAWING PROVIDED FOR ALL DIMENSIONS. 632. SEE DRAWING PROVIDED FOR ALL DIMENSIONS. 633. SEE DRAWING PROVIDED FOR ALL DIMENSIONS. 634. SEE DRAWING PROVIDED FOR ALL DIMENSIONS. 635. SEE DRAWING PROVIDED FOR ALL DIMENSIONS. 636. SEE DRAWING PROVIDED FOR ALL DIMENSIONS. 637. SEE DRAWING PROVIDED FOR ALL DIMENSIONS. 638. SEE DRAWING PROVIDED FOR ALL DIMENSIONS. 639. SEE DRAWING PROVIDED FOR ALL DIMENSIONS. 640. SEE DRAWING PROVIDED FOR ALL DIMENSIONS. 641. SEE DRAWING PROVIDED FOR ALL DIMENSIONS. 642. SEE DRAWING PROVIDED FOR ALL DIMENSIONS. 643. SEE DRAWING PROVIDED FOR ALL DIMENSIONS. 644. SEE DRAWING PROVIDED FOR ALL DIMENSIONS. 645. SEE DRAWING PROVIDED FOR ALL DIMENSIONS. 646. SEE DRAWING PROVIDED FOR ALL DIMENSIONS. 647. SEE DRAWING PROVIDED FOR ALL DIMENSIONS. 648. SEE DRAWING PROVIDED FOR ALL DIMENSIONS. 649. SEE DRAWING PROVIDED FOR ALL DIMENSIONS. 650. SEE DRAWING PROVIDED FOR ALL DIMENSIONS. 651. SEE DRAWING PROVIDED FOR ALL DIMENSIONS. 652. SEE DRAWING PROVIDED FOR ALL DIMENSIONS. 653. SEE DRAWING PROVIDED FOR ALL DIMENSIONS. 654. SEE DRAWING PROVIDED FOR ALL DIMENSIONS. 655. SEE DRAWING PROVIDED FOR ALL DIMENSIONS. 656. SEE DRAWING PROVIDED FOR ALL DIMENSIONS. 657. SEE DRAWING PROVIDED FOR ALL DIMENSIONS. 658. SEE DRAWING PROVIDED FOR ALL DIMENSIONS. 659. SEE DRAWING PROVIDED FOR ALL DIMENSIONS. 660. SEE DRAWING PROVIDED FOR ALL DIMENSIONS. 661. SEE DRAWING PROVIDED FOR ALL DIMENSIONS. 662. SEE DRAWING PROVIDED FOR ALL DIMENSIONS. 663. SEE DRAWING PROVIDED FOR ALL DIMENSIONS. 664. SEE DRAWING PROVIDED FOR ALL DIMENSIONS. 665. SEE DRAWING PROVIDED FOR ALL DIMENSIONS. 666. SEE DRAWING PROVIDED FOR ALL DIMENSIONS. 667. SEE DRAWING PROVIDED FOR ALL DIMENSIONS. 668. SEE DRAWING PROVIDED FOR ALL DIMENSIONS. 669. SEE DRAWING PROVIDED FOR ALL DIMENSIONS. 670. SEE DRAWING PROVIDED FOR ALL DIMENSIONS. 671. SEE DRAWING PROVIDED FOR ALL DIMENSIONS. 672. SEE DRAWING PROVIDED FOR ALL DIMENSIONS. 673. SEE DRAWING PROVIDED FOR ALL DIMENSIONS. 674. SEE DRAWING PROVIDED FOR ALL DIMENSIONS. 675. SEE DRAWING PROVIDED FOR ALL DIMENSIONS. 676. SEE DRAWING PROVIDED FOR ALL DIMENSIONS. 677. SEE DRAWING PROVIDED FOR ALL DIMENSIONS. 678. SEE DRAWING PROVIDED FOR ALL DIMENSIONS. 679. SEE DRAWING PROVIDED FOR ALL DIMENSIONS. 680. SEE DRAWING PROVIDED FOR ALL DIMENSIONS. 681. SEE DRAWING PROVIDED FOR ALL DIMENSIONS. 682. SEE DRAWING PROVIDED FOR ALL DIMENSIONS. 683. SEE DRAWING PROVIDED FOR ALL DIMENSIONS. 684. SEE DRAWING PROVIDED FOR ALL DIMENSIONS. 685. SEE DRAWING PROVIDED FOR ALL DIMENSIONS. 686. SEE DRAWING PROVIDED FOR ALL DIMENSIONS. 687. SEE DRAWING PROVIDED FOR ALL DIMENSIONS. 688. SEE DRAWING PROVIDED FOR ALL DIMENSIONS. 689. SEE DRAWING PROVIDED FOR ALL DIMENSIONS. 690. SEE DRAWING PROVIDED FOR ALL DIMENSIONS. 691. SEE DRAWING PROVIDED FOR ALL DIMENSIONS. 692. SEE DRAWING PROVIDED FOR ALL DIMENSIONS. 693. SEE DRAWING PROVIDED FOR ALL DIMENSIONS. 694. SEE DRAWING PROVIDED FOR ALL DIMENSIONS. 695. SEE DRAWING PROVIDED FOR ALL DIMENSIONS. 696. SEE DRAWING PROVIDED FOR ALL DIMENSIONS. 697. SEE DRAWING PROVIDED FOR ALL DIMENSIONS. 698. SEE DRAWING PROVIDED FOR ALL DIMENSIONS. 699. SEE DRAWING PROVIDED FOR ALL DIMENSIONS. 700. SEE DRAWING PROVIDED FOR ALL DIMENSIONS. 701. SEE DRAWING PROVIDED FOR ALL DIMENSIONS. 702. SEE DRAWING PROVIDED FOR ALL DIMENSIONS. 703. SEE DRAWING PROVIDED FOR ALL DIMENSIONS. 704. SEE DRAWING PROVIDED FOR ALL DIMENSIONS. 705. SEE DRAWING PROVIDED FOR ALL DIMENSIONS. 706. SEE DRAWING PROVIDED FOR ALL DIMENSIONS. 707. SEE DRAWING PROVIDED FOR ALL DIMENSIONS. 708. SEE DRAWING PROVIDED FOR ALL DIMENSIONS. 709. SEE DRAWING PROVIDED FOR ALL DIMENSIONS. 710. SEE DRAWING PROVIDED FOR ALL DIMENSIONS. 711. SEE DRAWING PROVIDED FOR ALL DIMENSIONS. 712. SEE DRAWING PROVIDED FOR ALL DIMENSIONS. 713. SEE DRAWING PROVIDED FOR ALL DIMENSIONS. 714. SEE DRAWING PROVIDED FOR ALL DIMENSIONS. 715. SEE DRAWING PROVIDED FOR ALL DIMENSIONS. 716. SEE DRAWING PROVIDED FOR ALL DIMENSIONS. 717. SEE DRAWING PROVIDED FOR ALL DIMENSIONS. 718. SEE DRAWING PROVIDED FOR ALL DIMENSIONS. 719. SEE DRAWING PROVIDED FOR ALL DIMENSIONS. 720. SEE DRAWING PROVIDED FOR ALL DIMENSIONS. 721. SEE DRAWING PROVIDED FOR ALL DIMENSIONS. 722. SEE DRAWING PROVIDED FOR ALL DIMENSIONS. 723. SEE DRAWING PROVIDED FOR ALL DIMENSIONS. 724. SEE DRAWING PROVIDED FOR ALL DIMENSIONS. 725. SEE DRAWING PROVIDED FOR ALL DIMENSIONS. 726. SEE DRAWING PROVIDED FOR ALL DIMENSIONS. 727. SEE DRAWING PROVIDED FOR ALL DIMENSIONS. 728. SEE DRAWING PROVIDED FOR ALL DIMENSIONS. 729. SEE DRAWING PROVIDED FOR ALL DIMENSIONS. 730. SEE DRAWING PROVIDED FOR ALL DIMENSIONS. 731. SEE DRAWING PROVIDED FOR ALL DIMENSIONS. 732. SEE DRAWING PROVIDED FOR ALL DIMENSIONS. 733. SEE DRAWING PROVIDED FOR ALL DIMENSIONS. 734. SEE DRAWING PROVIDED FOR ALL DIMENSIONS. 735. SEE DRAWING PROVIDED FOR ALL DIMENSIONS. 736. SEE DRAWING PROVIDED FOR ALL DIMENSIONS. 737. SEE DRAWING PROVIDED FOR ALL DIMENSIONS. 738. SEE DRAWING PROVIDED FOR ALL DIMENSIONS. 739. SEE DRAWING PROVIDED FOR ALL DIMENSIONS. 740. SEE DRAWING PROVIDED FOR ALL DIMENSIONS. 741. SEE DRAWING PROVIDED FOR ALL DIMENSIONS. 742. SEE DRAWING PROVIDED FOR ALL DIMENSIONS. 743. SEE DRAWING PROVIDED FOR ALL DIMENSIONS. 744. SEE DRAWING PROVIDED FOR ALL DIMENSIONS. 745. SEE DRAWING PROVIDED FOR ALL DIMENSIONS. 746. SEE DRAWING PROVIDED FOR ALL DIMENSIONS. 747. SEE DRAWING PROVIDED FOR ALL DIMENSIONS. 748. SEE DRAWING PROVIDED FOR ALL DIMENSIONS. 749. SEE DRAWING PROVIDED FOR ALL DIMENSIONS. 750. SEE DRAWING PROVIDED FOR ALL DIMENSIONS. 751. SEE DRAWING PROVIDED FOR ALL DIMENSIONS. 752. SEE DRAWING PROVIDED FOR ALL DIMENSIONS. 753. SEE DRAWING PROVIDED FOR ALL DIMENSIONS. 754. SEE DRAWING PROVIDED FOR ALL DIMENSIONS. 755. SEE DRAWING PROVIDED FOR ALL DIMENSIONS. 756. SEE DRAWING PROVIDED FOR ALL DIMENSIONS. 757. SEE DRAWING PROVIDED FOR ALL DIMENSIONS. 758. SEE DRAWING PROVIDED FOR ALL DIMENSIONS. 759. SEE DRAWING PROVIDED FOR ALL DIMENSIONS. 760. SEE DRAWING PROVIDED FOR ALL DIMENSIONS. 761. SEE DRAWING PROVIDED FOR ALL DIMENSIONS. 762. SEE DRAWING PROVIDED FOR ALL DIMENSIONS. 763. SEE DRAWING PROVIDED FOR ALL DIMENSIONS. 764. SEE DRAWING PROVIDED FOR ALL DIMENSIONS. 765. SEE DRAWING PROVIDED FOR ALL DIMENSIONS. 766. SEE DRAWING PROVIDED FOR ALL DIMENSIONS. 767. SEE DRAWING PROVIDED FOR ALL DIMENSIONS. 768. SEE DRAWING PROVIDED FOR ALL DIMENSIONS. 769. SEE DRAWING PROVIDED FOR ALL DIMENSIONS. 770. SEE DRAWING PROVIDED FOR ALL DIMENSIONS. 771. SEE DRAWING PROVIDED FOR ALL DIMENSIONS. 772. SEE DRAWING PROVIDED FOR ALL DIMENSIONS. 773. SEE DRAWING PROVIDED FOR ALL DIMENSIONS. 774. SEE DRAWING PROVIDED FOR ALL DIMENSIONS. 775. SEE DRAWING PROVIDED FOR ALL DIMENSIONS. 776. SEE DRAWING PROVIDED FOR ALL DIMENSIONS. 777. SEE DRAWING PROVIDED FOR ALL DIMENSIONS. 778. SEE DRAWING PROVIDED FOR ALL DIMENSIONS. 779. SEE DRAWING PROVIDED FOR ALL DIMENSIONS. 780. SEE DRAWING PROVIDED FOR ALL DIMENSIONS. 781. SEE DRAWING PROVIDED FOR ALL DIMENSIONS. 782. SEE DRAWING PROVIDED FOR ALL DIMENSIONS. 783. SEE DRAWING PROVIDED FOR ALL DIMENSIONS. 784. SEE DRAWING PROVIDED FOR ALL DIMENSIONS. 785. SEE DRAWING PROVIDED FOR ALL DIMENSIONS. 786. SEE DRAWING PROVIDED FOR ALL DIMENSIONS. 787. SEE DRAWING PROVIDED FOR ALL DIMENSIONS. 788. SEE DRAWING PROVIDED FOR ALL DIMENSIONS. 789. SEE DRAWING PROVIDED FOR ALL DIMENSIONS. 790. SEE DRAWING PROVIDED FOR ALL DIMENSIONS. 791. SEE DRAWING PROVIDED FOR ALL DIMENSIONS. 792. SEE DRAWING PROVIDED FOR ALL DIMENSIONS. 793. SEE DRAWING PROVIDED FOR ALL DIMENSIONS. 794. SEE DRAWING PROVIDED FOR ALL DIMENSIONS. 795. SEE DRAWING PROVIDED FOR ALL DIMENSIONS. 796. SEE DRAWING PROVIDED FOR ALL DIMENSIONS. 797. SEE DRAWING PROVIDED FOR ALL DIMENSIONS. 798. SEE DRAWING PROVIDED FOR ALL DIMENSIONS. 799. SEE DRAWING PROVIDED FOR ALL DIMENSIONS. 800. SEE DRAWING PROVIDED FOR ALL DIMENSIONS. 801. SEE DRAWING PROVIDED FOR ALL DIMENSIONS. 802. SEE DRAWING PROVIDED FOR ALL DIMENSIONS. 803. SEE DRAWING PROVIDED FOR ALL DIMENSIONS. 804. SEE DRAWING PROVIDED FOR ALL DIMENSIONS. 805. SEE DRAWING PROVIDED FOR ALL DIMENSIONS. 806. SEE DRAWING PROVIDED FOR ALL DIMENSIONS. 807. SEE DRAWING PROVIDED FOR ALL DIMENSIONS. 808. SEE DRAWING PROVIDED FOR ALL DIMENSIONS. 809. SEE DRAWING PROVIDED FOR ALL DIMENSIONS. 810. SEE DRAWING PROVIDED FOR ALL DIMENSIONS. 811. SEE DRAWING PROVIDED FOR ALL DIMENSIONS. 812. SEE DRAWING PROVIDED FOR ALL DIMENSIONS. 813. SEE DRAWING PROVIDED FOR ALL DIMENSIONS. 814. SEE DRAWING PROVIDED FOR ALL DIMENSIONS. 815. SEE DRAWING PROVIDED FOR ALL DIMENSIONS. 816. SEE DRAWING PROVIDED FOR ALL DIMENSIONS. 817. SEE DRAWING PROVIDED FOR ALL DIMENSIONS. 818. SEE DRAWING PROVIDED FOR ALL DIMENSIONS. 819. SEE DRAWING PROVIDED FOR ALL DIMENSIONS. 820. SEE DRAWING PROVIDED FOR ALL DIMENSIONS. 821. SEE DRAWING PROVIDED FOR ALL DIMENSIONS. 822. SEE DRAWING PROVIDED FOR ALL DIMENSIONS. 823. SEE DRAWING PROVIDED FOR ALL DIMENSIONS. 824. SEE DRAWING PROVIDED FOR ALL DIMENSIONS. 825. SEE DRAWING PROVIDED FOR ALL DIMENSIONS. 826. SEE DRAWING PROVIDED FOR ALL DIMENSIONS. 827. SEE DRAWING PROVIDED FOR ALL DIMENSIONS. 828. SEE DRAWING PROVIDED FOR ALL DIMENSIONS. 829. SEE DRAWING PROVIDED FOR ALL DIMENSIONS. 830. SEE DRAWING PROVIDED FOR ALL DIMENSIONS. 831. SEE DRAWING PROVIDED FOR ALL DIMENSIONS. 832. SEE DRAWING PROVIDED FOR ALL DIMENSIONS. 833. SEE DRAWING PROVIDED FOR ALL DIMENSIONS. 834. SEE DRAWING PROVIDED FOR ALL DIMENSIONS. 835. SEE DRAWING PROVIDED FOR ALL DIMENSIONS. 836. SEE DRAWING PROVIDED FOR ALL DIMENSIONS. 837. SEE DRAWING PROVIDED FOR ALL DIMENSIONS. 838. SEE DRAWING PROVIDED FOR ALL DIMENSIONS. 839. SEE DRAWING PROVIDED FOR ALL DIMENSIONS. 840. SEE DRAWING PROVIDED FOR ALL DIMENSIONS. 841. SEE DRAWING PROVIDED FOR ALL DIMENSIONS. 842. SEE DRAWING PROVIDED FOR ALL DIMENSIONS. 843. SEE DRAWING PROVIDED		

PROFILE
SOUTH SIDE OF W BELFORT AVE
LOOKING NORTH
SCALE:

SEE SHEET 20.1 TO MATCH SURVEY STA. 19+24



SEE SHEET 18.1 TO MATCH SURVEY STA. 5+74

PRODUCT: 1706ANB3.008	
KINSEPOINT 10 ELITE CREX	
SUGARMO. 1X 77478	
CLARIFICATION AND	QUANTITY
PLACE HANDHOLE	-
PLACE MARKER	
PROP 4" HDPE	
PROP 3-2" HDPE	
PROP 2-2" HDPE	
PROP 1-2" HDPE	
PULL 1-72P CABLE	
PULL 1-288P CABLE	
PULL 1-864P CABLE	
1-2- STAND OFF RISER	
DOWN GUY & ANCHOR	
PLACE 6M STAND	
LAD 1-288P-1-864P CABLE	

MCImetro
ACCESS TRANSMISSION SERVICES CORP.
OUTSIDE PLANT CONSTRUCTION
TITLE: FIBER OPTIC CABLE ROUTE
KINGSPPOINT TO ELLIS CREEK
SUGARLAND, TX 77478
OUTSIDE PLANT - PROFILE

DATE: 09/11/2017
ENGINEER: GXT
DRAWN BY: GXT
REVISIONS

DATE	DESCRIPTION	INITIALS
-	-	-

SCALE

HORIZONTAL: AS NOTED
VERTICAL: AS NOTED

MP 10 MP 10
SHEET 191 OF 244

FILE 1706ANBB 008-0119, 1AC, BEL, D

CALL BEFORE YOU DIG
1-800-245-4545
48 HOURS NOTICE REQUIRED



CAUTION!!!
EXIST. BURIED FIBER, TELEPHONE, CATV, GAS, ELECTRIC, WATER, SANITARY SEWER & STORM SEWER FACILITIES IN CONSTRUCTION AREA AND HAVE NOT BEEN FIELD LOCATED. CONTRACTOR TO VERIFY EXACT LOCATION AND DEPTH PRIOR TO ANY DIGGING AND/OR BORING.

NOTE

ALL UTILITIES MUST BE VERIFIED BY POINHLING
A 18" MAXIMUM DIAMETER "CORE BORE" WILL BE MADE
THEN THE REMAINING SOIL WILL BE REMOVED BY VACUUM EXCAVATION ONLY

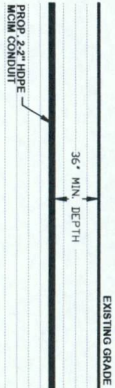
**CONTRACTOR TO LOCATE &
VERIFY ALL EXISTING UTILITIES
PRIOR TO CONSTRUCTION**

UTILITY & R.O.W. REPRESENTED ON
PLANS ARE BASED ON RECORDS
INFORMATION. NOT BASED ON
BOUNDARY SURVEY & FIELD EXPOSURES.

SUGARLAND, TX
FORT BEND, COUNTY

PROFILE
SOUTH SIDE OF W BELFORT AVE
LOOKING NORTH
N/S

EXISTING GRADE



PROJECT: 1706ANB, 008

KINGSPOINT TO ELLIS CREEK

SUGARLAND, TX 77478

CLASSIFICATION AND QUANTITY

PLACE HANDHOLE 1

PROP. 47 HOPE -

PROP. 3-2" HOPE -

PROP. 2-2" HOPE 1,350'

PROP. 1-2" HOPE -

PULL 1-725' CABLE -

PULL 1-688' CABLE 1,450'

1-2" STAND OFF RISER -

DOWN GUY & ANCHOR -

PLACE 6M STRAND -

LOC 1-288/71-864' CABLE -

MCImetro
ACCESS TRANSMISSION SERVICES CORP.
OUTSIDE PLANT CONSTRUCTION
TITLE: FIBER OPTIC CABLE ROUTE
KINGSPOINT TO ELLIS CREEK
SUGARLAND, TX 77478
OUTSIDE PLANT - PLAN

DATE: 09/11/2017

ENGINEER: GXT

DRAWN BY: GXT

REVISIONS

DATE DESCRIPTION INITIAL

SCALE
HORIZONTAL: 1"=100'
VERTICAL: 1"=100'

MP TO MP 54

SHEET 20 OF 54

Know what to dig.
Call before you dig.
48 HOURS NOTICE REQUIRED.



NOTE: ALL UTILITIES ARE BASED ON RECORDS AND FIELD SURVEY. NO GUARANTEE IS MADE FOR THE ACCURACY OF THE INFORMATION. THE USER OF THIS INFORMATION SHALL BE RESPONSIBLE FOR VERIFYING THE INFORMATION PRIOR TO CONSTRUCTION.

CAUTION!!!
CONSTRUCTION SHALL BE STOPPED IMMEDIATELY IF ANY UTILITIES ARE ENCOUNTERED PRIOR TO CONSTRUCTION.

NOTE: ALL UTILITIES MUST BE PROTECTED BY PROTECTING A 1" MINIMUM DIAMETER "CORE ROPE" WILL BE MADE THEN THE REMAINING SOIL WILL BE REMOVED BY VACUUM EXCAVATION ONLY.

SEE SHEET 21 TO MATCH SURVEY STA. 32+74



LONG RIVER DR.

10538 WESTEDGE DR.
SUGARLAND, TX 77498

WESTEDGE DR.

W BELFORT AVE

SPANISH GRANT DR.

SPANISH GRANT DR.



SEE SHEET 19 TO MATCH SURVEY STA. 19+24

SUGARLAND, TX
FORT BEND, COUNTY

PROFILE
SOUTH SIDE OF W BELFORT AVE
LOOKING NORTH

SCALE:
HOR: 1" = 100'
VER: 1" = 10'

SEE SHEET 21.1 TO MATCH SURVEY STA. 32+74

STA 29+96 PROP. EC HH
END/BEG. DIR BORE

SPANISH GRANT DR.

EDGE OF ROAD
EDGE OF ROAD

DIR BORE 2-2" HDPE E/W
1-288F & 1-864F CABLE

DIR BORE 2-2" HDPE E/W
1-288F & 1-864F CABLE

SEE SHEET 19.1 TO MATCH SURVEY STA. 19+24

UTILITY & R/W ARE REPRESENTED ON PLANS AND BASED ON RECORDS INFORMATION. NOT BASED ON BOUNDARY SURVEY & FIELD EXPOSURES.

CAUTION!!!!
CONTRACTOR TO LOCATE & VERIFY ALL EXISTING UTILITIES PRIOR TO CONSTRUCTION

ALL UTILITIES MUST BE VERIFIED BY POT-Holing A 18" MINIMUM DIAMETER CONE BORE AND RE-LOCATE THE REMAINING SOL. WILL BE REQUIRED BY MACHIN EXCAVATION ONLY.

CAUTION!!!
EXIST. BURIED FIBER, TELEPHONE, CABLE, GAS, ELECTRIC, WATER, AND SEWER LINES ARE LOCATED PRIOR TO ANY DIGGING AND/OR BORING.

Know what's below.
Call before you dig.

CALL BEFORE YOU DIG
1-800-245-4545
48 HOURS NOTICE REQUIRED

SCALE
HORIZONTAL: AS NOTED
VERTICAL: AS NOTED
MP 10 MP
SHEET 201 OF 54
FILE: T1706ANB-008-0120-INC-BEL-DW

MCInmetro
ACCESS TRANSMISSION SERVICES CORP.
OUTSIDE PLANT CONSTRUCTION
TITLE: FIBER OPTIC CABLE ROUTE
KINGSPPOINT TO ELLIS CREEK
SUGARLAND, TX 77478
OUTSIDE PLANT - PROFILE

DATE: 09/11/2017

ENGINEER: GXT

DRAWN BY: GXT

REVISIONS

DATE DESCRIPTION INITIAL

REVISIONS

SUGARLAND, TX
FORT BEND, COUNTY



PROJECT: 1706ANBB, 00B

KINGSPRINT TO ELLIS CREEK

SUGARLAND, TX 77478

CLASSIFICATION NO. QUANTITY

PLACE HANDHOLE 1

PRCP. 4" HDPE -

PRCP. 3-2" HDPE -

PRCP. 2-2" HDPE 1,350'

PRCP. 1-2" HDPE -

PULL 1-2880' CABLE -

PULL 1-2880' CABLE 1,450'

PULL 1-2880' CABLE 1,450'

DOWN GUY & ANCHOR -

PLACE 6M STRAND -

LAB 1-2880' 864F CABLE -

McMetro
ACCESS TRANSMISSION SERVICES CORP.

OUTSIDE PLANT CONSTRUCTION
TITLE: FIBER OPTIC CABLE ROUTE

KINGSPRINT TO ELLIS CREEK
SUGARLAND, TX 77478
OUTSIDE PLANT - PLAN

DATE: 09/11/2017

ENGINEER: GXT

DRAWN BY: GXT

REVISIONS

DATE DESCRIPTION INITIAL

- - -

- - -

- - -

- - -

- - -

- - -

- - -

- - -

- - -

- - -

- - -

- - -

- - -

- - -

- - -

- - -

- - -

- - -

- - -

- - -

- - -

- - -

- - -

- - -

SCALE

HORIZONTAL: 1"=100'

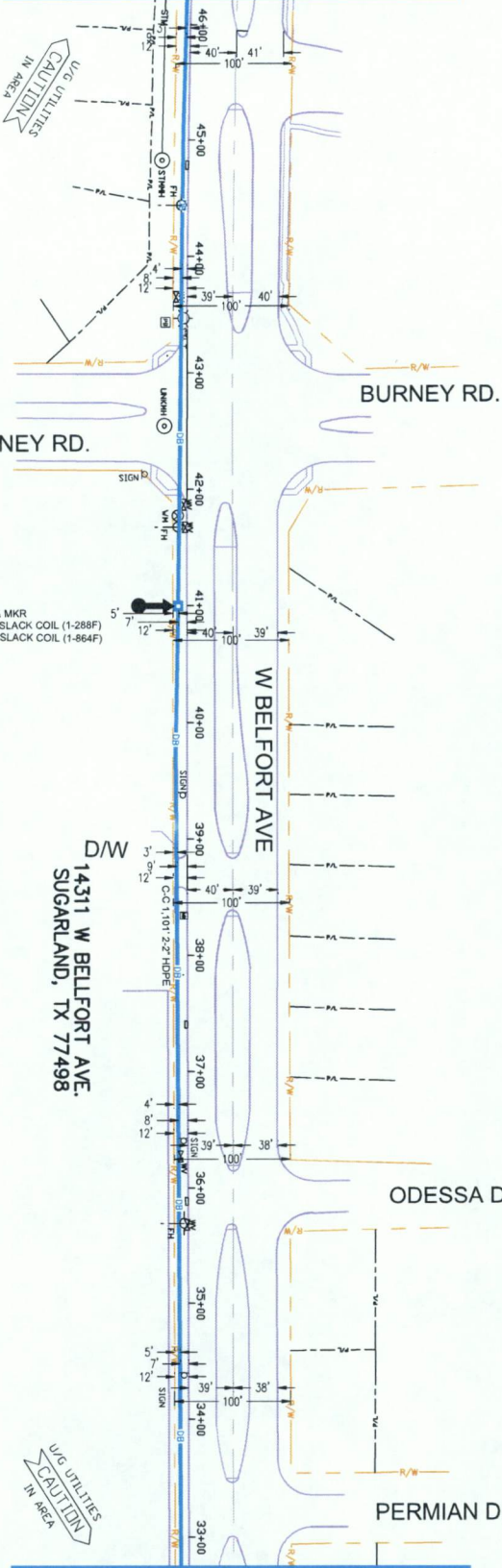
VERTICAL: 1"=100'

MP TO MP

SHEET 21 OF 54

FILE: 1706ANBB_00B-012121C_BEL.DWG

SEE SHEET 22 TO MATCH SURVEY STA. 46+24

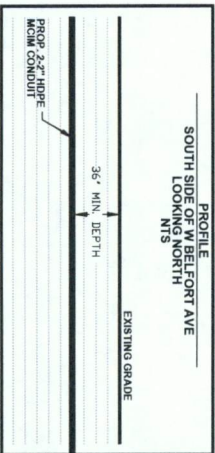


SEE SHEET 20 TO MATCH SURVEY STA. 32+74

UTILITY & R.O.I. INFORMATION ON PLANS ARE BASED ON RECORDS INFORMATION, NOT BASED ON BOUNDARY SURVEY & FIELD EVIDENCE.

CAUTION !!! CONTRACTOR TO LOCATE & VERIFY ALL EXISTING UTILITIES PRIOR TO CONSTRUCTION

ALL UTILITIES MUST BE VERIFIED BY POT-HOLING A 10' DIAMETER HOLE AT EACH LOCATION. THEN THE REMAINING SOLE WILL BE REMOVED BY VACUUM EXCAVATION ONLY.



CALL BEFORE YOU DIG
1-800-245-4545
48 HOURS NOTICE REQUIRED

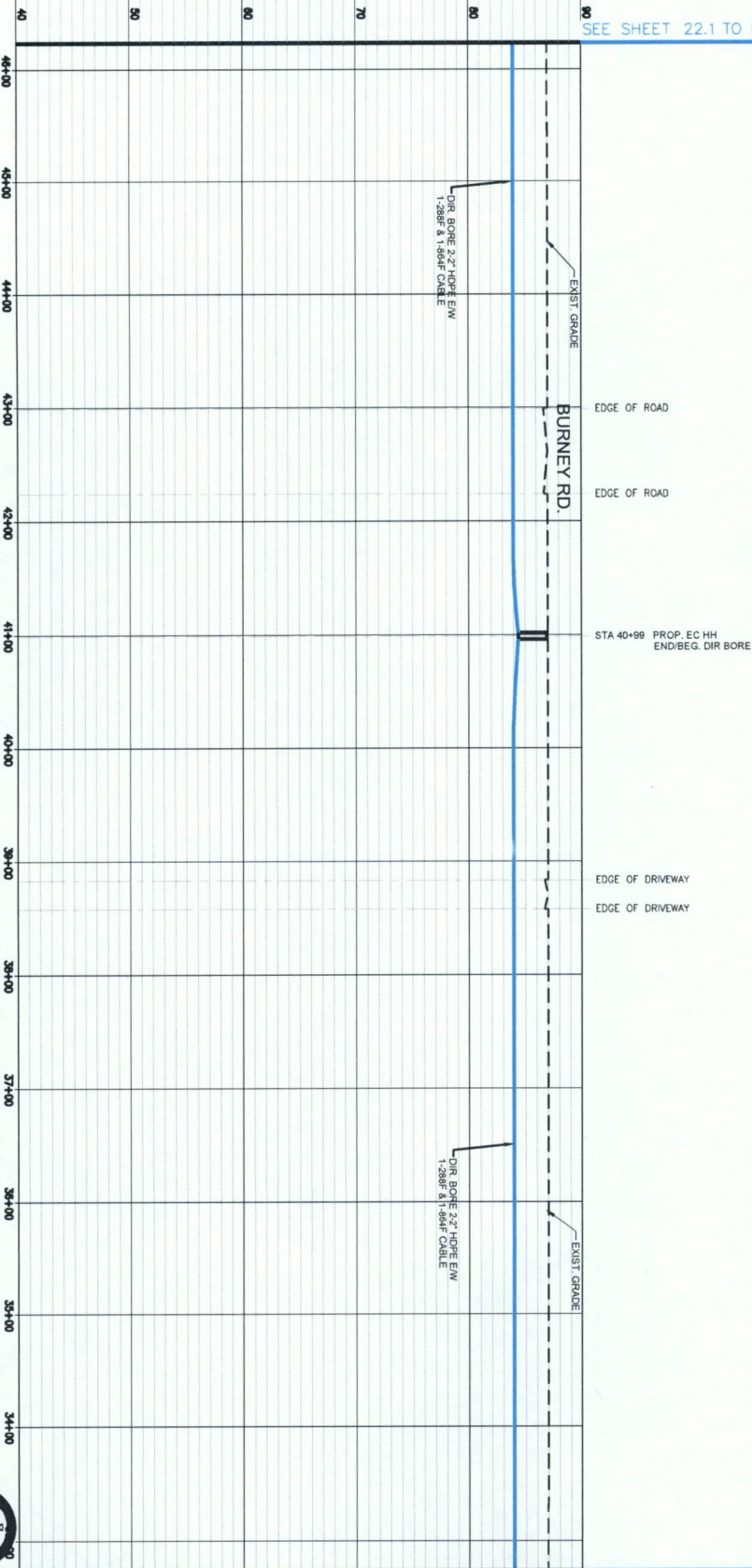


SUGARLAND, TX
FORT BEND, COUNTY

PROFILE
SOUTH SIDE OF W BELFORT AVE
LOOKING NORTH

HORIZ. SCALE: 1" = 100'
VERT. SCALE: 1" = 10'

SEE SHEET 22.1 TO MATCH SURVEY STA. 46+24



SEE SHEET 20.1 TO MATCH SURVEY STA. 32+74

UTILITY & ROAD REPRESENTED ON PLANS ARE BASED ON RECORDS INFORMATION. NOT BASED ON VISUAL SURVEY. CONTRACTOR TO VERIFY BOUNDARY SURVEY & FIELD EXPOSURES.

CAUTION!!! CONTRACTOR TO LOCATE & VERIFY ALL UTILITIES PRIOR TO CONSTRUCTION.

ALL UTILITIES MARKED BY SURVEYING A 1/2\"/>

CAUTION!!! EXISTING POWER, TELEPHONE, CABLE, GAS, ELECTRIC, WATER, SEWER, AND OTHER UTILITIES MAY BE LOCATED IN CONSTRUCTION AREA AND HAVE NOT BEEN FIELD LOCATED. CONTRACTOR TO VERIFY EXACT LOCATION AND DEPTH PRIOR TO ANY DRIVING AND/OR BORING.

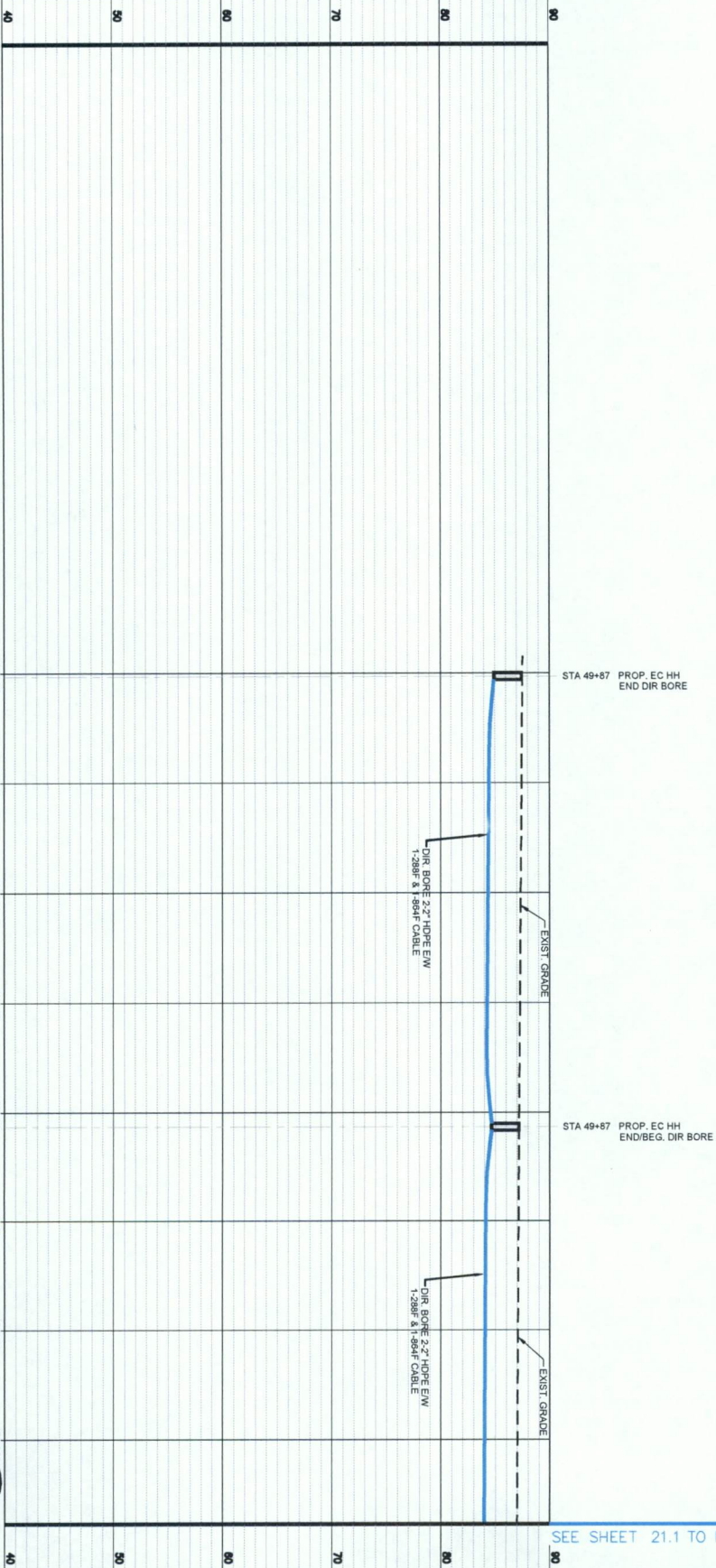
For more information, call below. Call before you dig. CALL BEFORE YOU DIG 1-800-245-4545 48 HOURS NOTICE REQUIRED

PROJECT: 1706ANB.008		KINGSPOINT TO ELLIS CREEK	
SUGARLAND, TX 77478		CLASSIFICATION AND QUANTITY	
PLACE MARKER		PLACE MARKER	
PROP. 4" HOPE		PROP. 3-2" HOPE	
PROP. 2-2" HOPE		PROP. 1-2" HOPE	
PULL 1-75F CABLE		PULL 1-288F CABLE	
PULL 1-864F CABLE		1-2" STAIN OF ROSS	
DOWN GUY & ANCHOR		PLACE 6M STRAND	
LASH 1-288F/864F CABLE		DATE: 09/11/2017	
ENGINEER: GXT			
DRAWN BY: GXT			
REVISIONS			
DATE	DESCRIPTION		
-	-	-	
SCALE			
HORIZONTAL: AS NOTED			
VERTICAL: AS NOTED			
MP TO MP			
SHEET 21 OF 54			
FILE: 1706ANB.008-0121.1AC.BLL.BW			

SUGARLAND, TX
FORT BEND, COUNTY

PROFILE
SOUTH SIDE OF W BELFORT AVE
LOOKING NORTH

HORIZ. SCALE: 1" = 100'
VERT. SCALE: 1" = 10'



UTILITY & ROUTE REPRESENTED ON PLANS ARE BASED ON RECORDS INFORMATION, NOT BASED ON FIELD SURVEY & FIELD EVIDENCE.

CAUTION!!! CONTRACTOR TO LOCATE & VERIFY ALL EXISTING UTILITIES PRIOR TO CONSTRUCTION.

ALL UTILITIES MUST BE COVERED BY FORMING A 1' MINIMUM DEPTH OF PROTECTIVE SOIL. ALL REMAINING SOIL WILL BE REMOVED BY WIDENING EXCAVATION ONLY.

CAUTION!!! EXISTING POWER, TELEPHONE, GAS, ELECTRIC, WATER, AND OTHER UTILITIES ARE LOCATED IN THIS AREA AND HAVE NOT BEEN FIELD LOCATED. CONTRACTOR TO VERIFY EXACT LOCATION AND DEPTH PRIOR TO ANY DIGGING AND/OR BORING.



CALL BEFORE YOU DIG
1-800-245-4545
48 HOURS NOTICE REQUIRED

PROJECT: 1706ANB3, 008
KINGSPOINT TO ELLIS CREEK
SUGARLAND, TX 77478
CLASSIFICATION NO. QUANTITY
PLACE MARKER
PROP. 4" HDPE
PROP. 3-2" HDPE
PROP. 2-2" HDPE
PROP. 1-2" HDPE
PULL 1-72F CABLE
PULL 1-288F CABLE
PULL 1-864F CABLE
1-2" STING DR. RISER
DOWN GUY & ANCHOR
PLACE 6M STRAND
LASH 1-288F/1-864F CABLE

DATE: 09/11/2017
ENGINEER: GXT
DRAWN BY: GXT
REVISIONS
DATE DESCRIPTION INITIAL

SCALE
HORIZONTAL: AS NOTED
VERTICAL: AS NOTED
MP TO MP
SHEET 221 OF 34
FILE: 1706ANB3-008-0022.DWG

McInetro
ACCESS TRANSMISSION SERVICES CORP.
OUTSIDE PLANT CONSTRUCTION
TITLE: FIBER OPTIC CABLE ROUTE
KINGSPOINT TO ELLIS CREEK
SUGARLAND, TX 77478
OUTSIDE PLANT - PROFILE