

## STANDARD UTILITY AGREEMENT

U-0021: **MCI Communication Services, Inc.**  
 County: Fort Bend  
 Highway: FM 1093 Westpark Extension Phase II

This Agreement by and between the County of Fort Bend, Texas, ("**County**"), and **MCI Communication Services, Inc. ("Utility")**, acting by and through its duly authorized representative, shall be effective on the date of approval and execution by and on behalf of the **County**.

**WHEREAS**, the **County** has deemed it necessary to make certain highway improvements as designated by the **County** and approved by the Federal Highway Administration within the limits of the highway as indicated above;

**WHEREAS**, the proposed highway improvements will necessitate the adjustment, removal, and/or relocation of certain facilities of **Utility** as indicated in the following statement of work: relocation of assets into a predesignated corridor according to the following schedule of dates:

Bid date – N/A  
 Board Approval – N/A  
 Start date – September 1, 2017, or sooner  
 Completion date – October 31, 2017

and more specifically shown in **Utility's** Plans and Specifications, Estimated Costs, and Schedule which are attached hereto as Exhibits "A," "B" and "C."

**WHEREAS**, Subchapter E of Chapter 203 of the Texas Transportation Code regarding the relocation of utilities does not apply to this Project, but the County wishes to negotiate in good faith and enter into agreements with all affected utility companies for the participation in the costs of the adjustment, removal, and/or relocation of certain facilities as authorized under such subchapter.

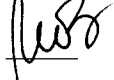
**WHEREAS**, the **County**, upon receipt of evidence it deems sufficient, acknowledges **Utility's** interest in certain lands and/or facilities and determined it is appropriate to enter an agreement with **Utility** to govern the terms for participation in the costs of the adjustment, removal, and relocation of certain of its facilities located upon the lands as indicated in the statement of work above.

### **NOW, THEREFORE, BE IT AGREED:**


The **County** will pay to **Utility** one hundred percent (100%) of the documented actual costs incurred in adjustment, removal, and/or relocation of **Utility's** facilities up to the amount said costs may be eligible for **County** participation. Without regard to **Utility's** eligibility for reimbursement, the County will pay **Utility** 100% of the documented direct and indirect actual costs for **Utility's** installation of the Fort Bend County fiber optic cable, conduit, manholes and any and all associated facilities, including, but not limited to, labor, materials, construction, damages, administrative overhead, taxes, travel expenses, legal fees and other reasonable out of pocket expenses

All conduct under this agreement, including but not limited to the adjustment, removal and relocation of the facility, the development and reimbursement of costs, any environmental requirements, and retention of records will be in accordance with all applicable federal and state laws, rules and regulations, including, without limitation, the Federal Uniform Relocation Assistance and Real Property Acquisition Policies Act, 42 U.S.C. §§ 4601, et seq., the National Environmental Policy Act, 42 U.S.C. §§ 4231, et seq., the Buy America provisions of 23 U.S.C. § 313 and 23 CFR 635.410, the Utility Relocations, Adjustments, and Reimbursements provisions of 23 CFR 645, Subpart A, and with the Utility Accommodation provisions of 23 CFR 645, Subpart B. **Utility** shall supply, upon request by the **County**, proof of compliance with the aforementioned laws, rules and regulations prior to the commencement of construction.

The **Utility** agrees to develop relocation or adjustment costs by accumulating actual direct and related indirect costs in accordance with a work order accounting procedure prescribed by **County**, or may, with the **County's** approval,

 8/25/17  
Date

Fort Bend County

 8/14/17  
Initial Date

MCI

accumulate actual direct and related indirect costs in accordance with an established accounting procedure developed by **Utility**. Bills for work hereunder will be submitted to **County** not later than 90 days after completion of the work.

When requested, the **County** will make intermediate payments at not less than monthly intervals to **Utility** when properly billed and such payments will not exceed 90 percent (90%) of the eligible cost as shown in each such billing. Intermediate payments shall not be construed as final payment for any items included in the intermediate payment.

Upon execution of this agreement by both parties hereto, the **County** will, by written notice, authorize the **Utility** to perform such work diligently, and to conclude said adjustment, removal, or relocation by the stated completion date. The completion date shall be extended for delays caused by events outside **Utility's** control, including an event of Force Majeure, which shall include a strike, war or act of war (whether an actual declaration of war is made or not), insurrection, riot, act of public enemy, accident, fire, flood or other act of God, sabotage, or other events, interference by the **County** or any other party with **Utility's** ability to proceed with the relocation, or any other event in which **Utility** has exercised all due care in the prevention thereof so that the causes or other events are beyond the control and without the fault or negligence of **Utility**.

The **County** will, upon satisfactory completion of the relocation or adjustment and upon receipt of final billing prepared in an approved form and manner, make payment in the amount of 90 percent (90%) of the eligible costs as shown in the final billing prior to audit and after such audit shall make an additional final payment totaling the reimbursement amount found eligible for **County** reimbursement. Without regard to eligibility and without audit, County will pay Utility 100% of the documented direct and indirect actual costs for Utility's installation of the Fort Bend County fiber optic cable, conduit, manholes and any and all associated facilities, including, but not limited to, labor, materials, construction, damages, administrative overhead, taxes, travel expenses, legal fees and other reasonable out of pocket expenses.

Unless an item below is stricken and initialed by the **County** and **Utility**, this agreement in its entirety consists of the following:

1. Standard Utility Agreement;
2. Plans & Specifications (Attachment "A");
3. Utility Construction Cost Estimate (Attachment "B");
4. Utility's Schedule of Work and Estimated Date of Completion (Attachment "C").


All attachments are included herein as if fully set forth. In the event it is determined that a substantial change from the statement of work contained in this agreement is required, reimbursement therefore shall be limited to costs covered by a modification or amendment of this agreement or a written change or extra work order approved by the **County and Utility**.

This agreement is subject to cancellation by the **County** at any time up to the date that work under this agreement has been authorized and that such cancellation will not create any liability on the part of the **County**. However, the **County** will review and reimburse the **Utility** for eligible costs incurred by the **Utility** in preparation of this Agreement.

The **Utility** acknowledges to and for the benefit of the **County** and State of Texas that it understands the project under this Agreement is eligible for Federal-aid highway funds and as such, requires all of the iron, steel, and manufactured goods used in the project be produced in the United States ("Buy American Requirements") including iron, steel, and manufactured goods provided by the **Utility** pursuant to this Agreement.

The State Auditor may conduct an audit or investigation of any entity receiving funds from the **County** directly under this contract or indirectly through a subcontract under this contract. Acceptance of funds directly under this contract or indirectly through a subcontract under this contract acts as acceptance of the authority of the State Auditor, under the direction of the Legislative Audit Committee, to conduct an audit or investigation in connection with those funds. An entity that is the subject of an audit or investigation must provide the state auditor with access to any information the state auditor considers relevant to the investigation or audit.

  
Date  
8/26/17  
Fort Bend County

  
Initial  
8/14/17  
Date  
MCI

The **Utility** by execution of this agreement does not waive any of the rights which **Utility** may have within the limits of the law.

It is expressly understood that the **Utility** conducts the adjustment, removal, or relocation at its own risk, and that Fort Bend County, Texas makes no warranties or representations regarding the existence or location of utilities currently within its right of way.

The signatories to this agreement warrant that each has the authority to enter into this agreement on behalf of the party represented.

**UTILITY**

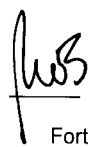
Utility: MCI Communication Services, Inc.  
*Name of Utility*


By:   
*Authorized Signature*

Robert J. Hayes  
*Print or Type Name*

Title: Sr. Manager Network Engineering & Operations

Date: 8/14/2017

 8/25/17  
*Date*  
Fort Bend County

 8/14/17  
*Initial* *Date*  
MCI

**EXECUTION RECOMMENDED:**

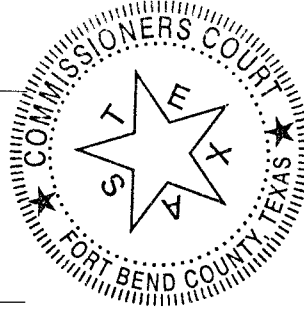
**COUNTY**

By:

*Robert E. Hebert*  
Robert E. Hebert, County Judge

Date:

9-12-2017



**ATTEST:**

By:

*Laura Richard*  
Laura Richard, County Clerk

**APPROVED:**

By:

*Richard W. Stolleis*  
Richard W. Stolleis, P.E., County Engineer

**APPROVED AS TO LEGAL FORM:**

By:

*Marcus D. Spencer*  
Marcus D. Spencer, First Assistant County Attorney

**AUDITOR'S CERTIFICATE**

I hereby certify that funds are available in the amount of \$138,1093.20 to accomplish and pay the obligation of Fort Bend County under this contract.

Robert Ed Sturdivant, County Auditor

*Robert Ed Sturdivant*

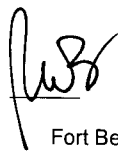
*MCS* 8/25/17  
Date  
Fort Bend County

*REH* 8/14/17  
Initial Date  
MCI

# Exhibit A

## MCI Communication Services, Inc. Plans & Specifications

(45 Pages that Follow)

  
Date 8/25/17  
Fort Bend County

  
Initial Date 8/14/17  
MCI

MCImetro  
ACCESS TRANSMISSION SERVICES CORPORATION

OUTSIDE PLANT CONSTRUCTION  
FIBER OPTIC CABLE ROUTE

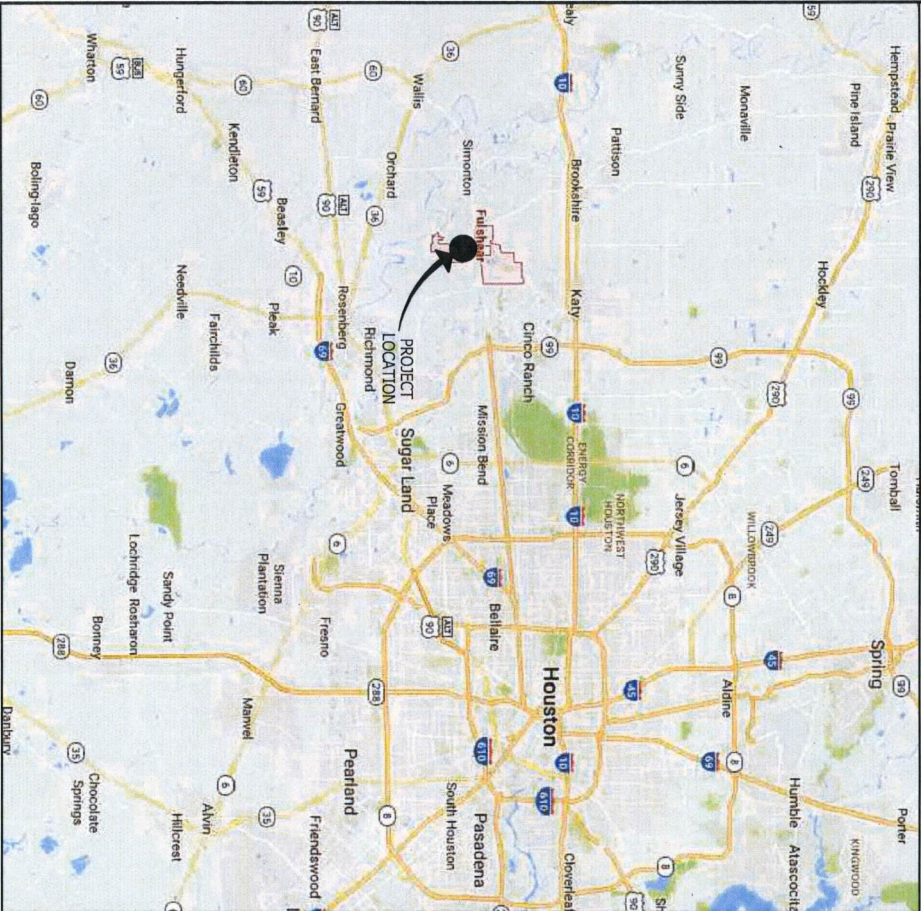
OSP CAPITAL PROJECT #: R40073-024  
RCUP FM 1093 WESTPARK EXTENSION PHASE II  
FULSHEAR, TX

SITE CODE: XXXXX

PROJECT STATUS: CONSTRUCTION

DATE: JUNE 27, 2017

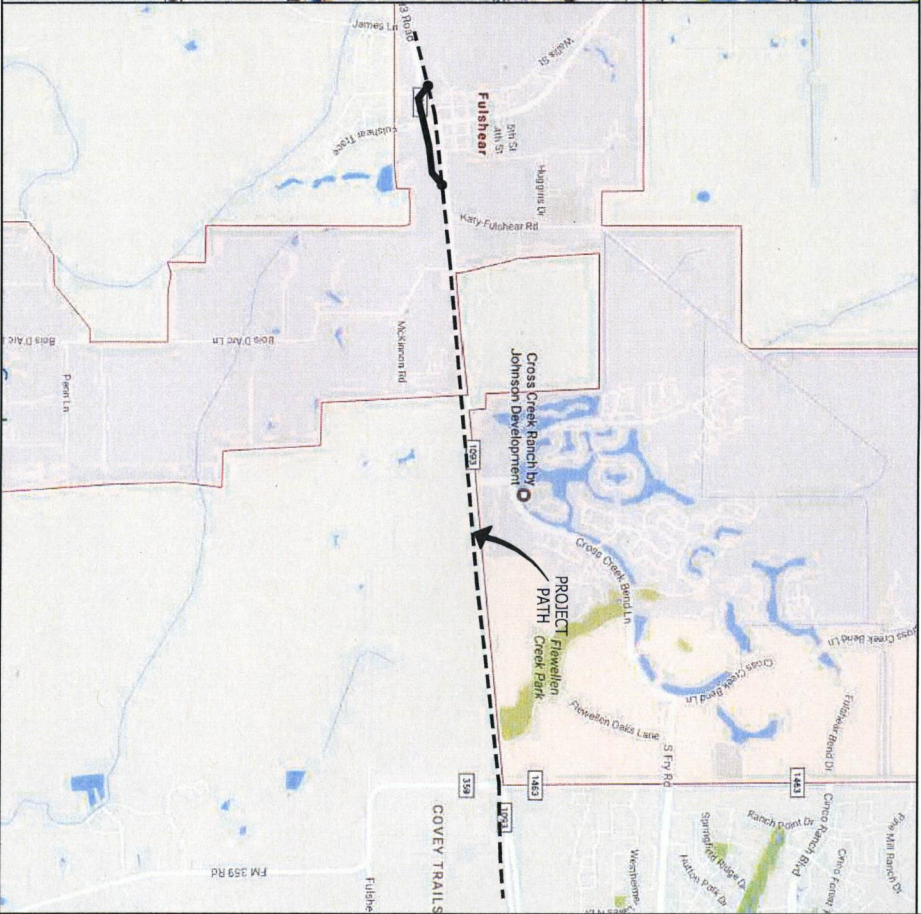
**LOCATION MAP**  
FULSHEAR, TX  
FORT BEND COUNTY



VICINITY MAP



FULSHEAR, TX



PROJECT MAP



**Verticalbusiness**

PROJECT: R40073-004

RCUP FM 1093 WESTPARK

EXTENSION PHASE II

FULSHEAR, TX

MCImetro  
ACCESS TRANSMISSION SERVICES CORPORATION

OUTSIDE PLANT CONSTRUCTION  
TITLE: FIBER OPTIC ROUTE

RCUP FM 1093 WESTPARK EXTENSION PHASE II  
FULSHEAR, TX

DATE: 06/27/17

ENGINEER: JEFF BUEHLER

DRAWN BY: G.F.S.

REVISIONS

DATE	DESCRIPTION	INITIAL

EXCEPT TO THE EXTENT OTHERWISE PROVIDED BY THE STATE OF TEXAS, THE PROJECTOR MAKES NO WARRANTY, REPRESENTATION OR STATEMENT OF FACT, AND SHALL NOT BE HELD RESPONSIBLE FOR ANY ERRORS OR OMISSIONS WITHOUT SPECIFIC WRITTEN PERMISSION.

SCALE

HORIZONTAL: N/A

VERTICAL: N/A

MP: N/A TO MP: N/A

SHEET: 02 OF 43

FILE: R40073-2401002A.C.R&U



# GENERAL NOTES & CLARIFICATION NOTES

## GENERAL NOTES

1. VERIZON BUSINESS COMPRISES THE FOLLOWING OPERATING ENTITIES:
  - MCI COMMUNICATIONS SERVICES, INC.
  - MCI METRO COMMUNICATIONS SERVICES, INC.
  - MCI METRO ACCESS TRANSMISSION SERVICES OF VIRGINIA, INC.
  - MCI METRO ACCESS TRANSMISSION SERVICES OF MASSACHUSETTS, INC.
  - METROPOLITAN FIBER SYSTEMS OF NEW YORK, INC.
2. ALL WORK TO BE PERFORMED IN STRICT ACCORDANCE WITH THE APPLICABLE CODES OR REQUIREMENTS OF ANY REGULATING GOVERNMENTAL AGENCY, VERIZON BUSINESS, AND THE RIGHT-OF-WAY GRANTOR.
3. LOCATIONS OF SOME OF THE PHYSICAL FEATURES WERE OBTAINED FROM DATED ROAD EVALUATION MAPS OR OTHER DRAWINGS AND MAY NOT BE AS SHOWN OR DEPICTED ON THESE DRAWINGS.
4. UNDERGROUND UTILITIES HAVE BEEN PLOTTED FROM AVAILABLE RECORDS AND FIELD OBSERVATIONS BUT ARE NOT NECESSARILY EXACT; THEREFORE, UTILITY LOCATIONS WILL BE VERIFIED AT LEAST 100 FEET IN ADVANCE OF TRENCHING OR PLOWING, SO THAT CHANGES IN CABLE PLACEMENT CAN BE MADE IN THE EVENT OF CONFLICT.
5. ALL KNOWN BURIED OBSTRUCTIONS ARE SHOWN ON THE CONSTRUCTION DRAWINGS, ANY AND ALL OTHERS ENCOUNTERED ARE ALSO THE RESPONSIBILITY OF THE CONTRACTOR TO LOCATE, PROTECT, AND REPAIR IF DAMAGED.
6. ANY AND ALL IMPROVEMENTS, SUCH AS ASPHALT OR CONCRETE PAVEMENT, CURBS, GUTTERS, WALKS, DRAINAGE DITCHES, EMBANKMENTS, SHRUBS, TREES, GRASS/SOD, ETC., IF DAMAGED, SHALL BE RESTORED TO ORIGINAL CONDITION.
7. EQUIPMENT TYPES SPECIFIED HEREIN (IE: "BACKHOE", "SWAMP PLOW", ETC.) ARE SUGGESTIONS ONLY AND ARE NOT INTENDED AS REQUIREMENTS; CONTRACTOR WILL BE NOTIFIED AS TO SPECIFICATIONS.
8. SHORING OF BORE PITS AND TRENCHES IN ACCORDANCE WITH OSHA REGULATIONS IS MANDATORY.
9. BURIED CABLE MARKERS WILL BE PLACED AT ALL UNDERGROUND UTILITY LOCATIONS AND ALL OTHER LOCATIONS IN ACCORDANCE WITH THE CONSTRUCTION DRAWINGS AND THE OUTSIDE PLANT HANDBOOK.
10. ALL 4" ID CONDUIT WILL BE SCHEDULE 40 (E.G.: PVC OR GSP/RSPI, OR AS SPECIFIED).
11. UNDERGROUND CONDUIT WILL BE PLACED AT 48" MINIMUM COVER UNLESS OTHERWISE SPECIFIED ON THE CONSTRUCTION DRAWINGS.

## CLARIFICATION NOTES

1.	STATION	LOCATION
2.		LOCATION
3.		CLASSIFICATION NO. AND MINIMUM COVER
4.		QUANTITY, LINEAR FOOTAGE/SQUARE FOOTAGE, SIZE OF MANHOLE/HANDHOLE, SIDE OF PULL/SPLICE BOX, DIMENSION OF WALL, HEIGHT/CLASS/TYPE OF POLE
5.		TYPICAL DRAWING NO. AND TYPICAL DETAIL DRAWING NUMBER
6.		PLANT ACCOUNTING CODE
7.		SPECIFIED CONDUIT, HANDHOLE/MANHOLE NO., SPECIFIED PURPOSE AND MATERIAL, BRIDGE NO. AND RAILROAD STATION, MATERIAL, POLE NO.

## ADDENDUM NOTES

## CLARIFICATION NOTES (CONTINUED)

100	110	JACK AND DRY BORE CONDUIT(S)
200	210	PLACE CONDUIT
	212	PLACE HIGH DENSITY POLYETHYLENE (HDPE)
	213	ROCK ADDER
	214	SURRY BACKFILL ADDER
	215	EXPOSE CONDUIT
	216	EXPOSE CONDUIT AND RELOCATE
	217	EXPOSE CONDUIT AND REPLACE/SUBSTITUTE
	218	EXPOSE AND REMOVE CONDUIT
	219	EXPOSE AND REMOVE CONDUIT (ABANDONED)
	220	CONCRETE ENCASEMENT
	221	REMOVE CONCRETE ENCASEMENT
	222	REMOVE CONCRETE CAP
	240	PLACE HANDHOLE
	242	REMOVE EXISTING HANDHOLE
	243	RELOCATE HANDHOLE
	245	RELOCATE HANDHOLE
	247	EXCAVATE SPACE FILL
	249	PLACE HANDHOLE
	250	REMOVE EXISTING MANHOLE
	252	RELOCATE PRECAST MANHOLE
	253	REPLACE/SUBSTITUTE PRECAST MANHOLE
	256	CONSTRUCT WALL
	180	REMOVE AND RESTORE ASPHALT
	270	REMOVE AND RESTORE CONCRETE
	280	REMOVE AND RESTORE CONCRETE
	281	REMOVE AND RESTORE CURB/WALK
	282	REMOVE AND RESTORE CURBING
300	310	ATTACH CONDUIT TO WALL OR STRUCTURE
	315	DETACH CONDUIT FROM WALL OR STRUCTURE
	320	CORE BORE
	330	ATTACH PULL/SPLICE BOX TO WALL OR STRUCTURE
400	410	PULL CABLE
	411	PULL THROUGH DUCT (INNERDUCT)
	415	REMOVE CABLE FROM CONDUIT
	420	REPOSITION ACTIVE CABLE SLACK
500	510	DIRECT BURRY CABLE
	515	EXPOSE DIRECT BURIED CABLE
	516	EXPOSE DIRECT BURIED CABLE AND RELOCATE
	517	REMOVE AND DISPOSE OF CABLE
	520	PLACE AERIAL CABLE
	525	RELOCATE AERIAL CABLE
	518	DELASH AERIAL CABLE
	527	RELAUNCH AERIAL CABLE
	528	REMOVE AERIAL CABLE
	530	PLACE POLE/PUSH BRACE
	535	REMOVE POLE/PUSH BRACE
600	610	JETTING CONDUIT
	620	EMBEDMENT PLOW
	630	DIRECTIONAL BORE
700	710	PLACE BURIED CABLE MARKERS AND SENSORS/MCM
	711	WATER CROSSING SIGNS
	713	PLACE ISOLATOR/PROTECTION SYSTEM AT EXISTING HANDHOLES/MANHOLES
	712	REMOVE BURIED CABLE/MARKER POST/HARDWARE
	714	REMOVE CONCRETE BURIED CABLE MARKER POST

PROJECT: #40073024  
 RCUP FM 1093 WESTPARK EXTENSION PHASE II  
 FULSHEAR, TX

MCI metro  
ACCESS TRANSMISSION SERVICES CORPORATION

OUTSIDE PLANT CONSTRUCTION  
TITLE: FIBER OPTIC ROUTE

RCUP FM 1093 WESTPARK EXTENSION PHASE II  
FULSHEAR, TX

DATE: 06/27/17  
 ENGINEER: JEFF BUEHLER  
 DRAWN BY: G.F.S.

REVISIONS:

NO.	DATE	DESCRIPTION	INITIALS

VERTICAL: N/A  
 HORIZONTAL: N/A  
 SCALE: N/A  
 SHEET: 04 OF 49  
 FILE: S:\40073-940\004A.C\8&U


# MCI OUTSIDE PLANT FOCUS

## FIBER OPTIC CABLE UNCOVERING SYSTEM

1. THE TITLE OF THIS PROGRAM, F.O.C.U.S., AN ACRONYM FOR FIBER OPTIC CABLE UNCOVERING SYSTEM, WAS SELECTED TO REMIND EVERYONE INVOLVED WITH WORKING NEAR MCIS ACTIVE FIBER OPTIC SYSTEMS TO FOCUS ON PROTECTING THE FACILITIES. IF DURING THE COURSE OF THE PROJECT, YOU NOTICE ANY ACTIVITY WHICH MAY JEOPARDIZE THE MCI OSP FACILITIES, IT IS YOUR DUTY TO STOP THE WORK AND REF. O.C.U.S.
2. F.O.C.U.S. RULES MUST BE FOLLOWED ON ALL MCI PROJECTS INVOLVING WORK ON OR NEAR MCI OSP FACILITIES. SAFETY IS MCIS NUMBER ONE PRIORITY. EVERYONE MUST BEHAIN FROM UNSAFE AND IMPROPER PRACTICES.
3. REVIEW OF F.O.C.U.S. IS MANDATORY AT EVERY PRE-BID, PRE-CONSTRUCTION SITE MEETING AND DAILY TALKAGE MEETING. F.O.C.U.S. DISCUSSION MUST INCLUDE SITE-SPECIFIC HISTORY, UNIQUE PROBLEMS, FACILITY CONFIGURATIONS THAT MAY BE ENCOUNTERED, AND PAST ERRORS. "THOSE WHO DO NOT LEARN FROM HISTORY ARE DOOMED TO REPEAT IT." DO NOT LET THIS HAPPEN TO YOU.
4. ANY WORK NEAR OR REQUIRING HANDLING OF MCI OUTSIDE PLANT FACILITIES CAN ONLY BE PERFORMED WITH AN MCI EMPLOYEE OR CONTRACT REPRESENTATIVE PRESENT -- THIS MEANS OUT OF HIS OR HER VEHICLE AND DIRECTLY MONITORING THE WORK. THE REPRESENTATIVE MUST HAVE A PROPERLY OPERATING CABLE LOCATOR CHECKED FOR ACCURACY EVERY DAY PRIOR TO COMMENCEMENT OF WORK (COMPARISON OF LINE AND DEPTH READINGS TO ACTUAL LINE AND DEPTH OF THE CABLE).
5. LOCATE AND POT-HOLE REQUIREMENTS:
  - PRIOR TO ANY EXCAVATION, THE MCI EMPLOYEE OR CONTRACT REPRESENTATIVE MUST VERIFY THE INITIAL LOCATE MARKS COMPLETED BY MCI OPERATIONS. DO NOT TRUST LOCATE RESULTS COMPLETED BY OTHERS. THE MCI OR CONTRACT REPRESENTATIVE MUST LOCATE THE CABLE RUNNING LINE BY MAKING AT LEAST ONE PASS IN EACH DIRECTION. LOCATE RESULTS MUST THEN BE COMPARED WITH PREVIOUS MARKS AND THE AS-BUILTS.
  - IF THE PROPOSED WORK INVOLVES DIGGING OR EXCAVATING WITHIN 3 FEET OF THE CABLE, THE CABLE ROUTE WILL BE MARKED CONTINUALLY WITH ORANGE PAINT AND SUPPLEMENTED BY MARKER FLAGS PLACED EVERY 10 FT. THE EXCAVATION CONTRACTOR MUST POT-HOLE (ALL POT-HOLES MUST BE COMPLETED BY HAND DIGGING OR VACUUM EXCAVATION) A MINIMUM OF EVERY 15 FT., THEN EXPOSE THE ENTIRE LENGTH OF THE CABLE BY HAND DIGGING OR VACUUM EXCAVATION.
  - IF THE PROPOSED WORK INVOLVES DIGGING OR EXCAVATING WITHIN 5 FEET (BUT NOT CLOSER THAN 3 FEET) OF THE CABLE, THE CABLE ROUTE WILL BE MARKED CONTINUALLY WITH ORANGE PAINT AND SUPPLEMENTED BY MARKER FLAGS PLACED EVERY 10 FT. THE EXCAVATION CONTRACTOR MUST POT-HOLE THE CABLE A MINIMUM OF EVERY 15 FT.
  - IF THE PROPOSED WORK INVOLVES DIGGING OR EXCAVATING WITHIN 5 FEET (BUT NOT CLOSER THAN 3 FEET) OF THE CABLE, THE CABLE ROUTE WILL BE MARKED CONTINUALLY WITH ORANGE PAINT AND SUPPLEMENTED BY MARKER FLAGS PLACED EVERY 10 FT. THE EXCAVATION CONTRACTOR MUST POT-HOLE THE CABLE A MINIMUM OF EVERY 15 FT.
  - THE CABLE WILL ALSO BE POT-HOLED AT ANY CHANGE IN THE RUNNING LINE OF MORE THAN 1 FT. IN ANY DIRECTION. ANTIMITE THE ACCURACY OF THE ELECTRONIC LOCATE IS QUESTIONED, OR THE MARKED RUNNING LINE DOES NOT MATCH THE AS-BUILTS.
6. EXPOSING REQUIREMENTS:
  - NO MECHANICAL EXCAVATION WITHIN 3 FT. OF OSP FACILITIES WILL BE ALLOWED UNLESS THE FACILITIES HAVE FIRST BEEN PROPERLY LOCATED, POT-HOLED, POSITIVELY IDENTIFIED, CONTINUOUSLY EXPOSED BY HAND DIGGING OR VACUUM EXCAVATION, AND THE FACILITIES ARE CLEARLY VISIBLE.
  - IN ADDITION, MECHANICAL EXCAVATION WITHIN 3 FT. OF OSP FACILITIES REQUIRES ON-SITE PRIOR APPROVAL FROM MCIS EMPLOYEE OR CONTRACT REPRESENTATIVE.
7. PLEASE REFER TO THE LATEST EDITION OF THE MCI OSP HANDBOOK FOR ADDITIONAL DETAILS. KNOW IT AND FOLLOW IT.

## MCI OUTSIDE PLANT CONSTRUCTION GENERAL REQUIREMENTS

- ALL FEDERAL, STATE AND LOCAL SAFETY REGULATIONS MUST BE FOLLOWED WITHOUT EXCEPTION.
  - PERSONAL PROTECTIVE EQUIPMENT APPROPRIATE FOR THE SPECIFIC WORK SITE SHALL BE USED AT ALL TIMES. AT A MINIMUM, HARD HAT, SAFETY SHOES/STEEL-TOED BOOTS, AND FLORESCENT ORANGE OR GREEN WORK VEST ARE REQUIRED UPON ENTERING ANY MCI WORK SITE.
  - USE OF INTOXICANTS, DRUGS, INHALANTS OR ANY OTHER SUBSTANCES THAT MAY IMPAIR ALERTNESS ARE STRICTLY PROHIBITED.
  - CONTRACTORS ARE NOT ALLOWED TO CUT ANY CABLE. CABLES SCHEDULED FOR REMOVAL WILL BE CUT BY MCI OPERATIONS PERSONNEL, AND ONLY AFTER VERIFICATION THAT ALL TRAFFIC HAS BEEN OFF-LOADED.
- EXTREME CAUTION MUST BE USED AT ALL TIMES WHEN WORKING ON OR NEAR ACTIVE CABLES. AN MCI EMPLOYEE OR CONTRACT REPRESENTATIVE MUST APPROVE AND BE PRESENT PRIOR TO AND DURING ALL CABLE HANDLING ACTIVITIES.
- TOOLS AND EQUIPMENT SPECIFICALLY DESIGNED FOR THE JOB AT HAND ARE REQUIRED. USE THE PROPER TOOL FOR THE JOB.
- CONDUIT WORK INVOLVING ACTIVE CABLES REQUIRES SPECIALIZED TOOLS SPECIFICALLY DESIGNED TO ACCESS DUCTS WITH ACTIVE CABLES.
- PROTECTING MCI FACILITIES IS EXTREMELY IMPORTANT; HOWEVER, SAFETY REGARDING YOURSELF AND OTHERS IS THE MOST IMPORTANT PART OF ANY PROJECT.

										
PROJECT:	R40073-2014									
RCUP FM 1093 WESTPARK										
EXTENSION PHASE II										
FULSHEAR, TX										
<p>MCImetro ACCESS TRANSMISSION SERVICES CORPORATION</p> <p>OUTSIDE PLANT CONSTRUCTION TITLE: FIBER OPTIC ROUTE RCUP FM 1093 WESTPARK EXTENSION PHASE II FULSHEAR, TX</p>										
DATE:	06/27/17									
ENGINEER:	JEFF BUEHLER									
DRAWN BY:	G.F.S.									
<p>REVISIONS</p> <table border="1"> <thead> <tr> <th>DATE</th> <th>DESCRIPTION</th> <th>INITIALS</th> </tr> </thead> <tbody> <tr> <td> </td> <td> </td> <td> </td> </tr> <tr> <td> </td> <td> </td> <td> </td> </tr> </tbody> </table>		DATE	DESCRIPTION	INITIALS						
DATE	DESCRIPTION	INITIALS								
<p>PERMIT TO MAINTAIN OR CONDUCT WORK NEAR OR ON ANY MCI OSP FACILITIES MUST BE OBTAINED FROM MCI OPERATIONS PERSONNEL PRIOR TO THE START OF ANY WORK. THE PERMIT MUST BE OBTAINED FROM MCI OPERATIONS PERSONNEL PRIOR TO THE START OF ANY WORK. THE PERMIT MUST BE OBTAINED FROM MCI OPERATIONS PERSONNEL PRIOR TO THE START OF ANY WORK. THE PERMIT MUST BE OBTAINED FROM MCI OPERATIONS PERSONNEL PRIOR TO THE START OF ANY WORK.</p>										
<p>SCALE</p> <p>HORIZONTAL: N/A</p> <p>VERTICAL: N/A</p> <p>MP: N/A TO MP: N/A</p> <p>SHEET: 04A OF 43</p> <p>FILE: R40073-240109AC-RAU</p>										

# CLARIFICATION SUMMARY SHEET PROJECT SPECIFIC

## PROJECT CLARIFICATION SUMMARY

CLARIFICATION NUMBER	CLARIFICATION NUMBER AND ALPHA	DESCRIPTION	QUANTITY	UNIT
200	210	PLACE 1-4" SPLIT STEEL F/ CONC. CAP OVER EXIST. CONDUIT	450'	LF
	215	EXPOSE & INTERCEPT EXIST. 1-2" HDPE	10'	LF
	215A	EXPOSE BURIED HH	2	EA
	216	EXPOSE & LOWER EXIST. 1-2" HDPE	1370'	LF
	240	PLACE SPLIT HH	2	EA
400	244	REMOVE EXIST. HH	1	EA
	410	PULL 1-24F (INCL. 200' IN COILS)	1974'	LF
	415	REMOVE 1-24F, 1 MICRO FIBER, 1 MICRO DUCT	1700'	LF
600	420	REPOSITION ACTIVE CABLE SLACK	500	LF
	630	DIRECTIONAL BORE 2-2" HDPE	1774'	LF
700	710	PLACE MCI-MARKER	5	EA



PROJECT: R4073-2924  
 RCUP FM 1093 WESTPARK  
 EXTENSION PHASE II  
 FULSHEAR, TX

MCImetro  
 ACCESS TRANSMISSION SERVICES CORPORATION

OUTSIDE PLANT CONSTRUCTION  
 TITLE: FIBER OPTIC ROUTE  
 RCUP FM 1093 WESTPARK EXTENSION PHASE II  
 FULSHEAR, TX

DATE: 06/22/17  
 ENGINEER: JEFF BUEHLER  
 DRAWN BY: G.F.S.

REVISIONS

DATE	DESCRIPTION	INITIALS

SCALE

HORIZONTAL: N/A  
 VERTICAL: N/A  
 MP N/A TO MP N/A  
 SHEET 048 OF 43  
 FILE: R4073-29241004A.C:R&U

EXCEPT AS MAY BE OTHERWISE PROVIDED BY CONTRACT DOCUMENTS, THE INFORMATION CONTAINED HEREIN IS THE PROPERTY OF MCI METRO AND IS TO BE USED ONLY FOR THE PROJECT AND LOCATION SPECIFICALLY IDENTIFIED HEREIN. NO PART OF THIS DOCUMENT IS TO BE REPRODUCED, STORED IN A RETRIEVAL SYSTEM, TRANSMITTED, OR DISSEMINATED IN ANY MANNER WITHOUT THE WRITTEN PERMISSION OF MCI METRO.

# SYMBOLS KEY

	EXISTING	PROPOSED
BURIED CABLE		
AERIAL CABLE		
SUBMARINE CABLE		
FOGWIRE CABLE		
DIRECT BURIED HDPE		
PVC OR SPLIT PVC CONDUIT		
BSP/GSP OR SPLIT BSP/GSP CONDUIT		
STEEL CASING		
REMOVE AND RESTORE ASPHALT OR CONCRETE (WIDTH AS INDICATED)		
CORE BORE		
JACK AND BORE		
DIRECTIONAL BORE		
FLTURE CABLE		
REMOVE CABLE		
TO BE REMOVED OR ABANDONED (SHOWN FOR HDPE)		
AERIAL UTILITY (ELECTRIC)		
UNDERGROUND UTILITY (TELEPHONE)		
MAIN TRACKS		
AUXILIARY TRACKS		
CENTERLINE		
RIGHT-OF-WAY		
EDGE OF PAVEMENT		
SIDEWALK		
DITCH LINE		
TAX DISTRICT		
CITY, COUNTY OR STATE BOUNDARY LINE		
PROPERTY LINE		
FENCE LINE		
GUARDRAIL		
TOP OF SLOPE		
TOE OF SLOPE		

STEEL MARKER AND SIGMA)	
ALUMINUM HUB-STYLE MARKER-(A)	
FLAT MARKER-(B)	
TUBULAR MARKER-(D)	
TUBULAR MARKER, & ISOLATOR PROTECTOR-(E)	
MILE POST MARKER	
NOTE: DASHED = NOT FOUND IN FIELD	
PERMIT TRACKING FORM IDENTIFIER	
ROCK PROBE (DEPTH AS INDICATED)	
UTILITY COVER DEPTH	
HANDHOLE, MANHOLE OR PULLBOX	
POLE	
ANCHOR ONLY	
GUY ONLY	
OVERHEAD GUY (ARROW IN DIRECTION OF PULL)	
ANCHOR AND GUY	
SIDEWALK ANCHOR AND GUY	
FOREIGN ANCHOR AND GUY	
PUSH BRACE (EXISTING POLE)	
ACCOUNT CODE CHANGE (BURIED TO AERIAL)	
BOND AND GROUND	
CULVERT (SIZE AS INDICATED)	
BRIDGE	
WATER METER	
GAS VALVE	
FIRE HYDRANT	
RAILROAD SIGNAL CONTROL BOX	
CAUTION NOTE	

EXISTING	PROPOSED
STA MKR. # (A)	STA MKR. # (A)
STA MKR. # (B)	STA MKR. # (B)
STA MKR. # (C)	STA MKR. # (C)
STA MKR. # (D)	STA MKR. # (D)
STA MKR. # (E)	STA MKR. # (E)
STA MKR. # (A)	STA MKR. # (A)
STA MKR. # (B)	STA MKR. # (B)
STA MKR. # (C)	STA MKR. # (C)
STA MKR. # (D)	STA MKR. # (D)
STA MKR. # (E)	STA MKR. # (E)

**VERTICONS**

PROJECT: R40073A02A

RCUP FM 1093 WESTPARK EXTENSION PHASE II

FULSHEAR, TX

DATE: 06/27/17

ENGINEER: JEFF BUEHLER

DRAWN BY: G.F.S.

REVISIONS:

DATE	DESCRIPTION	INITIAL

MCImetro

ACCESS TRANSMISSION SERVICES CORPORATION

OUTSIDE PLANT CONSTRUCTION

TITLE: FIBER OPTIC ROUTE

RCUP FM 1093 WESTPARK EXTENSION PHASE II

FULSHEAR, TX

SCALE

HORIZONTAL: N/A

VERTICAL: N/A

MP: N/A TO MP: N/A

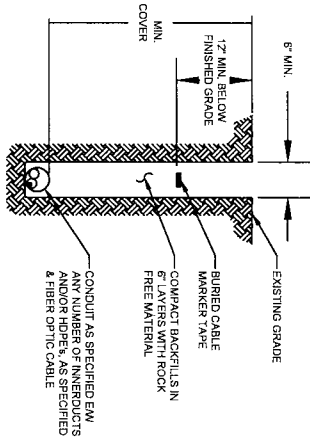
SHEET: 05 OF 43

FILE: R40073-2401005AC-28U

EXCEPT AS NOTED, THE INFORMATION CONTAINED HEREIN IS THE PROPERTY OF MCI METRO AND IS TO BE USED ONLY FOR THE PROJECT AND PHASE SPECIFICALLY IDENTIFIED HEREIN. NO PART OF THIS DOCUMENT IS TO BE REPRODUCED, STORED IN A RETRIEVABLE SYSTEM, TRANSMITTED, OR DISTRIBUTED IN ANY FORM OR BY ANY MEANS, ELECTRONIC OR MECHANICAL, INCLUDING PHOTOCOPYING, RECORDING, OR BY ANY INFORMATION STORAGE AND RETRIEVAL SYSTEM, WITHOUT THE WRITTEN PERMISSION OF MCI METRO.

# CONSTRUCTION DETAILS

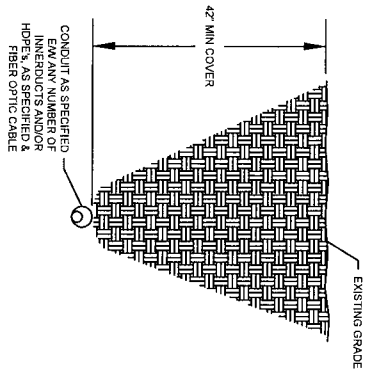
**TYPICAL DETAIL "A"**  
**TRENCH & PLACE CONDUIT**



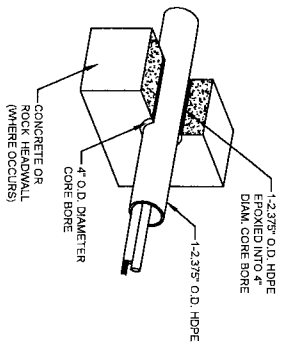
**TYPICAL DETAIL "B"**  
**CROSS SECTION OF PROPOSED HDPE**




**TYPICAL DETAIL "C"**  
**DIRECTIONAL BORE CROSS SECTION FOR CONDUIT**



**TYPICAL DETAIL "D"**  
**4" CORE BORE**

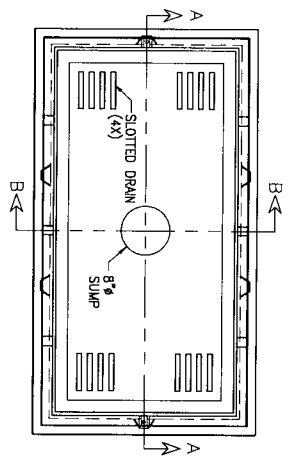


**NOTE:**  
EPOXY GROUT IS USED AT BOTH ENDS OF CORE BORE TO SEAL GAP BETWEEN 2.5" CONDUIT AND PVC SLEEVE.

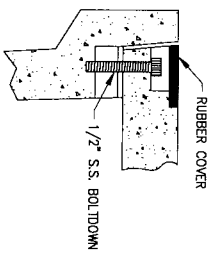
			
PROJECT:	RA0073-024		
RCUP FM 1093 WESTPARK			
EXTENSION PHASE II			
FULSHEAR, TX			
<b>MCImetro</b> ACCESS TRANSMISSION SERVICES CORPORATION			
OUTSIDE PLANT CONSTRUCTION TITLE: FIBER OPTIC ROUTE			
RCUP FM 1093 WESTPARK EXTENSION PHASE II FULSHEAR, TX			
DATE:	06/27/17		
ENGINEER:	JEFF BUEHLER		
DRAWN BY:	G.F.S.		
<b>REVISIONS</b>			
DATE	DESCRIPTION	INITIALS	
<b>SCALE</b>			
HORIZONTAL:	N/A		
VERTICAL:	N/A		
MP	N/A	TO MP	N/A
SHEET	06	OF	43
EXISTING AS SHOWN IS THE RESULT OF FIELD SURVEY AND SHALL BE USED AS A GUIDE ONLY. THE CONTRACTOR SHALL VERIFY ALL DIMENSIONS AND CONDITIONS OF EXISTING UTILITIES AND STRUCTURES PRIOR TO CONSTRUCTION. THE CONTRACTOR SHALL BE RESPONSIBLE FOR OBTAINING ALL NECESSARY PERMITS AND APPROVALS FROM THE APPROPRIATE AGENCIES. THE CONTRACTOR SHALL MAINTAIN ACCESS TO ALL ADJACENT PROPERTIES AND UTILITIES AT ALL TIMES. THE CONTRACTOR SHALL BE RESPONSIBLE FOR PROTECTING ALL EXISTING UTILITIES AND STRUCTURES. THE CONTRACTOR SHALL MAINTAIN ALL RECORDS OF CONSTRUCTION AND SHALL SUBMIT THEM TO THE ENGINEER UPON COMPLETION OF THE PROJECT.			
FILE: RA0073-024-000A-C-83U			

30" X 60" X 30" 30K STANDARD HANDHOLE DETAILS

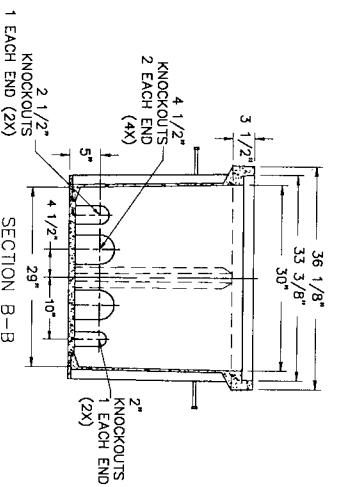
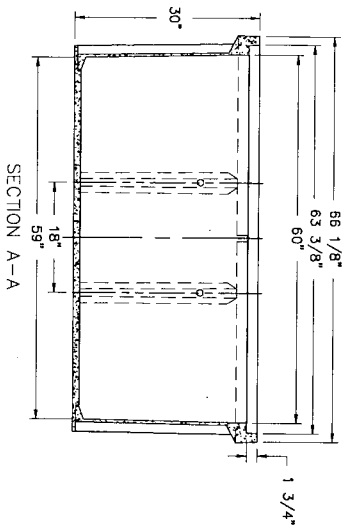
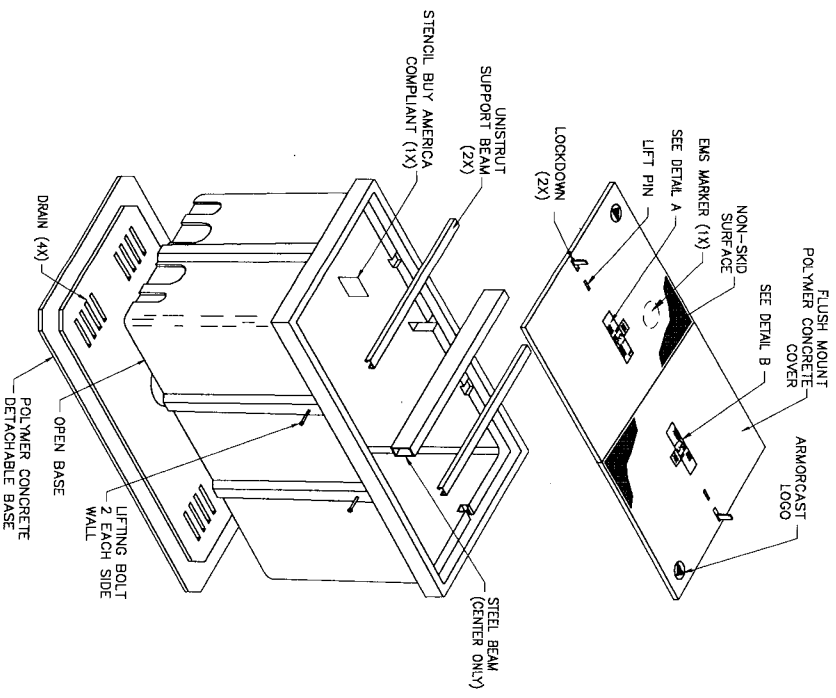
DETAIL "A"  
LOCKING DEVICE  
CROSS SECTION



DETAIL "B"  
FLUSH MOUNT  
COVER DETAIL



DETAIL "C"  
EXPLODED ISOMETRIC DETAIL



30K  
M C E  
800 MCI-WORK  
DETAIL A

30K  
M C E  
800 MCI-WORK  
DETAIL B

- SEALED PLASTIC BAG PLACED INSIDE VAULT TO CONTAIN
- | ITEM | QTY | DESCRIPTION                               |
|------|-----|---|
| 1    | {1} | JOHNNY LOCK KEY                           |
| 2    | {2} | S.S. JOHNNY BOLTS W/FLAT WASHER           |
| 3    |     | SHRINK WRAP COVERS TO FRAME FOR PACKAGING |

**30K STANDARD HANDHOLE**  
30" X 60" X 30" POLYMER CONCRETE FLUSH MOUNT ASSEMBLY  
MEETS SCT/EANSI 77-TIER 22 LOADING CRITERIA  
ADDITIONAL REQUIREMENTS:  
DESIGNED LOAD: 30,000 LBS  
MINIMUM FAILURE LOAD: 45,000 LBS

PROJECT:	R40073-074
RCUP:	FM 1093 WESTPARK
EXTENSION PHASE:	II
LOCATION:	FULSHEAR, TX
MCI metro ACCESS TRANSMISSION SERVICES CORPORATION OUTSIDE PLANT CONSTRUCTION TITLE: FIBER OPTIC ROUTE RCUP FM 1093 WESTPARK EXTENSION PHASE II FULSHEAR, TX	
DATE:	06/27/17
ENGINEER:	JEFF BURKHIER
DRAWN BY:	G.F.S.
REVISIONS DATE DESCRIPTION INITIAL	
SCALE HORIZONTAL: N/A VERTICAL: N/A MP: N/A TO MP: N/A SHEET: 07 OF 43 FILE: R40073-24-01007AC-084U	

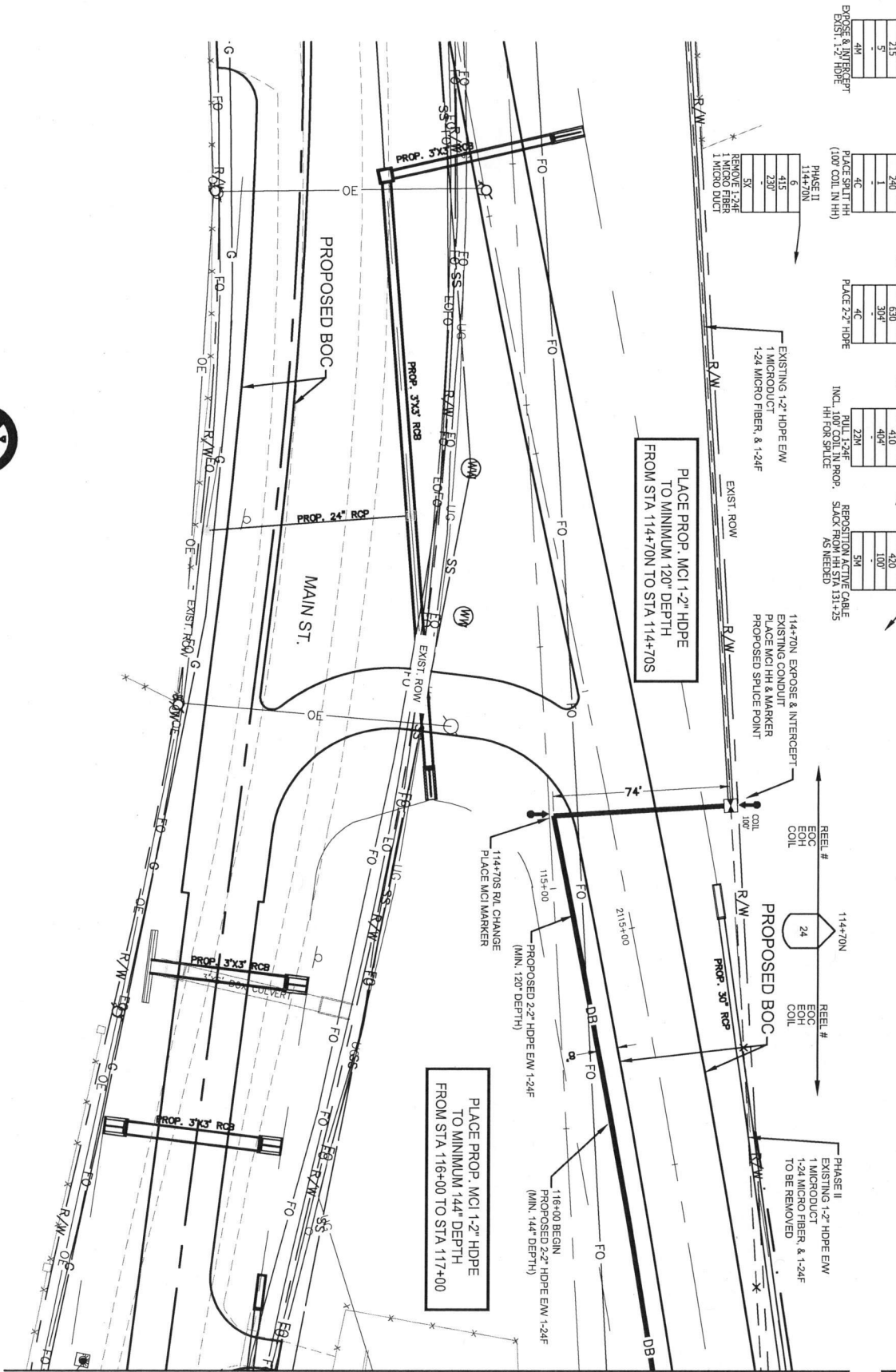
**INDEX SHEET**  
 FULSHEAR, TX  
 FORT BEND COUNTY



**vertizonbusiness**  
 PROJECT: R400734024  
 RCUP FM 1093 WESTPARK  
 EXTENSION PHASE II  
 FULSHEAR, TX

DATE: 06/27/17 ENGINEER: JEFF BUEHLER DRAWN BY: G.F.S.		MCImetro ACCESS TRANSMISSION SERVICES CORPORATION	
REVISIONS DATE DESCRIPTION INITIAL		OUTSIDE PLANT CONSTRUCTION TITLE: FIBER OPTIC ROUTE	
HORIZONTAL: N/A VERTICAL: N/A MP N/A TO MP N/A SHEET 08 OF 43 FILE: R400734010094C.RXD		RCUP FM 1093 WESTPARK EXTENSION PHASE II FULSHEAR, TX	

FULSHEAR, TX  
FORT BEND COUNTY



SEE SHEET 10 TO MATCH SURVEY STA. 117+00

UNDERGROUND UTILITIES HAVE BEEN IDENTIFIED FROM AVAILABLE RECORDS AND FIELD OBSERVATIONS BUT ARE NOT NECESSARILY EXACT. IT IS THE CONTRACTOR'S RESPONSIBILITY TO FIELD LOCATE ALL UNDERGROUND OBSTRUCTIONS AND UTILITIES PRIOR TO CONSTRUCTION, COMPLETE REPAIR OF ANY AND ALL DAMAGES INCURRED SHALL BE AT THE EXPENSE OF THE CONTRACTOR.

CALL BEFORE YOU DIG  
1-800-45-6005  
72 HOURS NOTICE REQUIRED



**North**

**Vertz** *onbusiness*

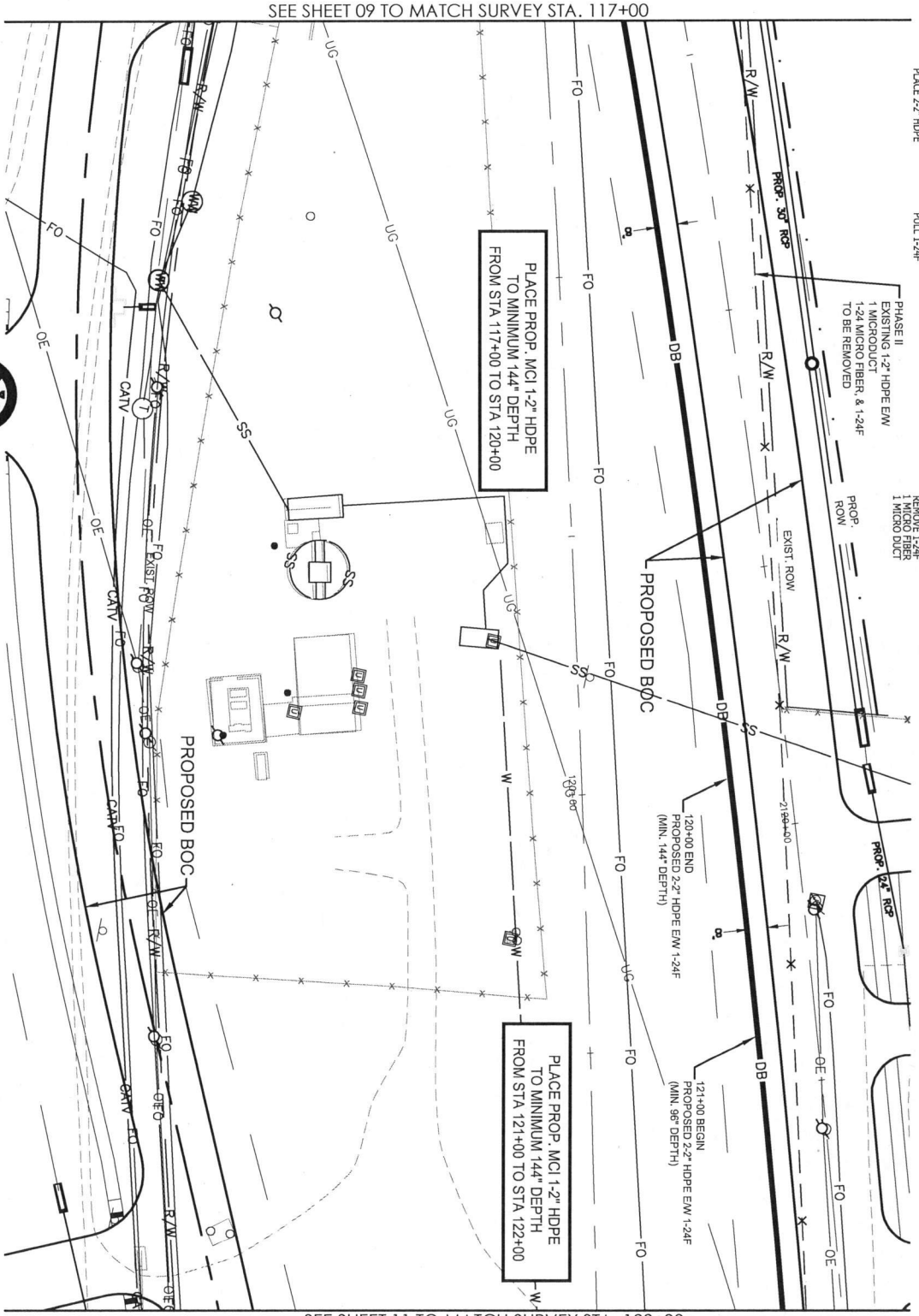
PROJECT: R40073-2402

RCUP FM 1093 WESTPARK  
EXTENSION PHASE II  
FULSHEAR, TX

215	5
240	404
410	2307
415	1007
420	304
630	2
710	

MCImetro ACCESS TRANSMISSION SERVICES CORPORATION		
OUTSIDE PLANT CONSTRUCTION TITLE: FIBER OPTIC ROUTE RCUP FM 1093 WESTPARK EXTENSION PHASE II FULSHEAR, TX		
DATE: 06/27/17	ENGINEER: JEFF BUEHLER	
DATE: 06/27/17	DRAWN BY: G.F.S.	
REVISIONS		
DATE	DESCRIPTION	INITIALS
SCALE		
HORIZONTAL: 1" = 40'	VERTICAL: 1" = 10'	
MP N/A TO MP N/A	MP N/A TO MP N/A	
SHEET 09 OF 43	FILE: R40073-2401099.AC; RAU	

FULSHEAR, TX  
FORT BEND COUNTY



SEE SHEET 09 TO MATCH SURVEY STA. 117+00

SEE SHEET 11 TO MATCH SURVEY STA. 122+00

UNDERGROUND UTILITIES HAVE BEEN PLOTTED FROM AVAILABLE RECORDS AND FIELD SURVEY. THE CONTRACTOR SHALL BE RESPONSIBLE TO FIELD LOCATE ALL UNDERGROUND OBSTRUCTIONS AND UTILITIES PRIOR TO CONSTRUCTION, COMPLETE REPAIR OF ANY AND ALL DAMAGES INCURRED SHALL BE AT THE EXPENSE OF THE CONTRACTOR.

CALL BEFORE YOU DIG  
1-800-545-0005  
72 HOURS NOTICE REQUIRED



117+00

1	630
2	410
3	500
4	500

PLACE 2.2" HDPE

117+00

1	410
2	500
3	500
4	500

PULL 1-24F

PHASE II  
117+00

1	415
2	500
3	500
4	500

REMOVE FIBER  
1 MICRO DUCT



PROJECT: R40073-0024

RCUP FM 1093 WESTPARK  
EXTENSION PHASE II  
FULSHEAR, TX

410	500
415	500
630	500

MCImetro  
ACCESS TRANSMISSION SERVICES CORPORATION

OUTSIDE PLANT CONSTRUCTION  
TITLE: FIBER OPTIC ROUTE  
RCUP FM 1093 WESTPARK EXTENSION PHASE II  
FULSHEAR, TX

DATE: 06/27/17  
ENGINEER: JEFF BUEHLER  
DRAWN BY: G.F.S.

REVISIONS

DATE	DESCRIPTION	INITIALS

SCALE

HORIZONTAL: 1" = 40'

VERTICAL: 1" = 10'

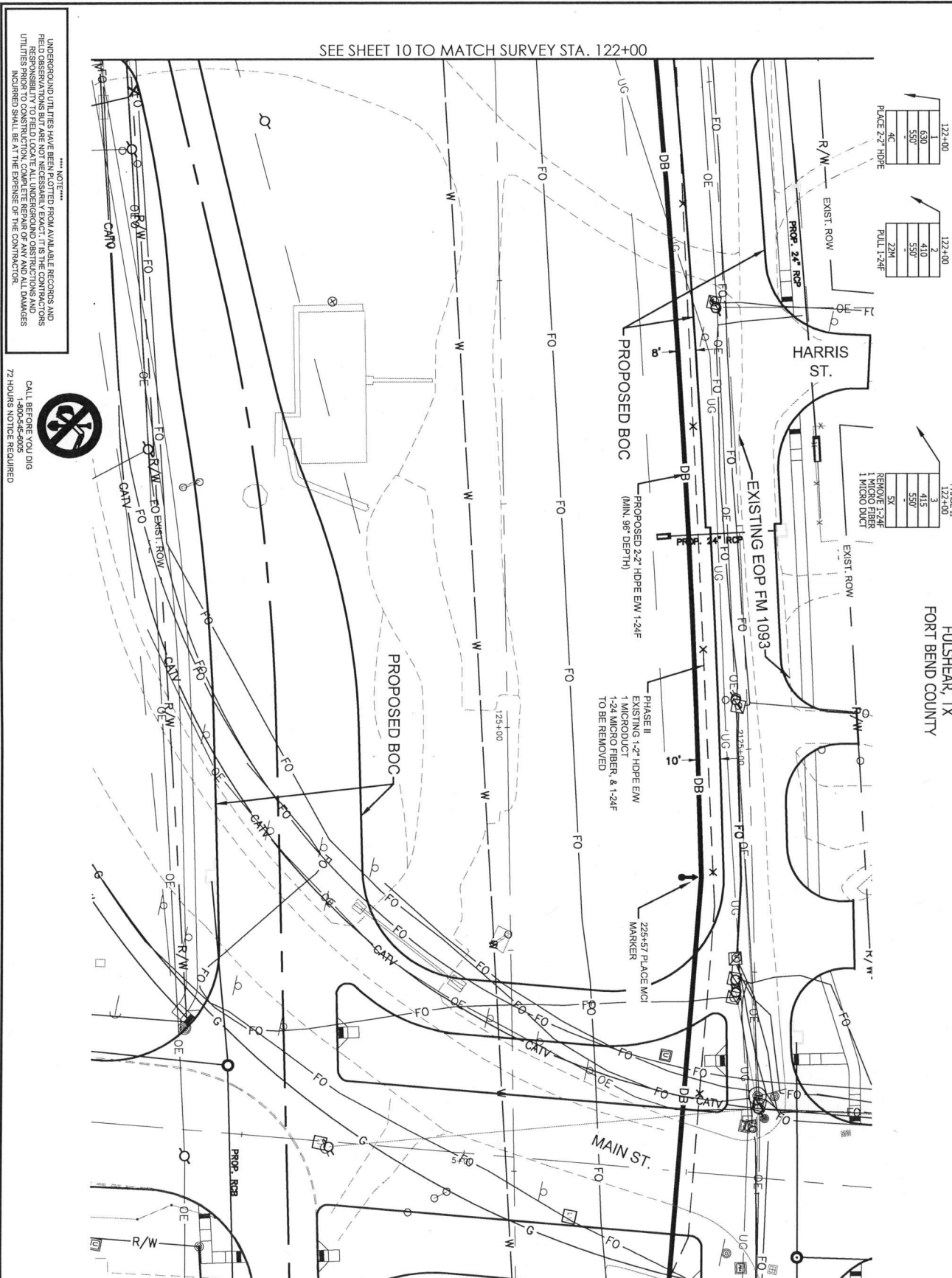
MP N/A TO MP N/A

SHEET 10 OF 43

FILE: R40073-2401010AC.RAU

EXCEPT AS MAY BE OTHERWISE INDICATED BY THIS PLAN, ALL CONSTRUCTION SHALL BE IN ACCORDANCE WITH THE STANDARD SPECIFICATIONS FOR HIGHWAY CONSTRUCTION AND SHALL NOT BE DEVIATED FROM WITHOUT SPECIFIC WRITTEN PERMISSION.

SEE SHEET 10 TO MATCH SURVEY STA. 122+00



SEE SHEET 12 TO MATCH SURVEY STA. 127+50

122+00

1	630
2	550
3	550
4	550

PLACE 2x2 HDPE

122+00

1	410
2	550
3	22M

PULL 1-24F

PHASE II  
122+00

1	415
2	550
3	550
4	550

REMOVE 1-24F  
EXISTING 1.2\"/>

FULSHEAR, TX  
FORT BEND COUNTY

NOTE  
UNDERGROUND UTILITIES HAVE BEEN PLOTTED FROM AVAILABLE RECORDS AND FIELD OBSERVATIONS BUT ARE NOT NECESSARILY EXACT. IT IS THE CONTRACTOR'S RESPONSIBILITY TO VERIFY THE LOCATION AND DEPTH OF ALL UTILITIES PRIOR TO CONSTRUCTION. COMPLETE REPAIR OF ANY AND ALL DAMAGES INCURRED SHALL BE AT THE EXPENSE OF THE CONTRACTOR.

CALL BEFORE YOU DIG  
800-368-5808  
72 HOURS NOTICE REQUIRED



PROJECT: R40073-002A  
RCUP FM 1093 WESTPARK EXTENSION PHASE II  
FULSHEAR, TX

410	550
415	550
630	550
710	1

MCImetro  
ACCESS TRANSMISSION SERVICES CORPORATION

OUTSIDE PLANT CONSTRUCTION  
TITLE: FIBER OPTIC ROUTE  
RCUP FM 1093 WESTPARK EXTENSION PHASE II  
FULSHEAR, TX

DATE: 06/27/17  
ENGINEER: JEFF BUEHLER  
DRAWN BY: G.F.S.

DATE	DESCRIPTION	INITIAL

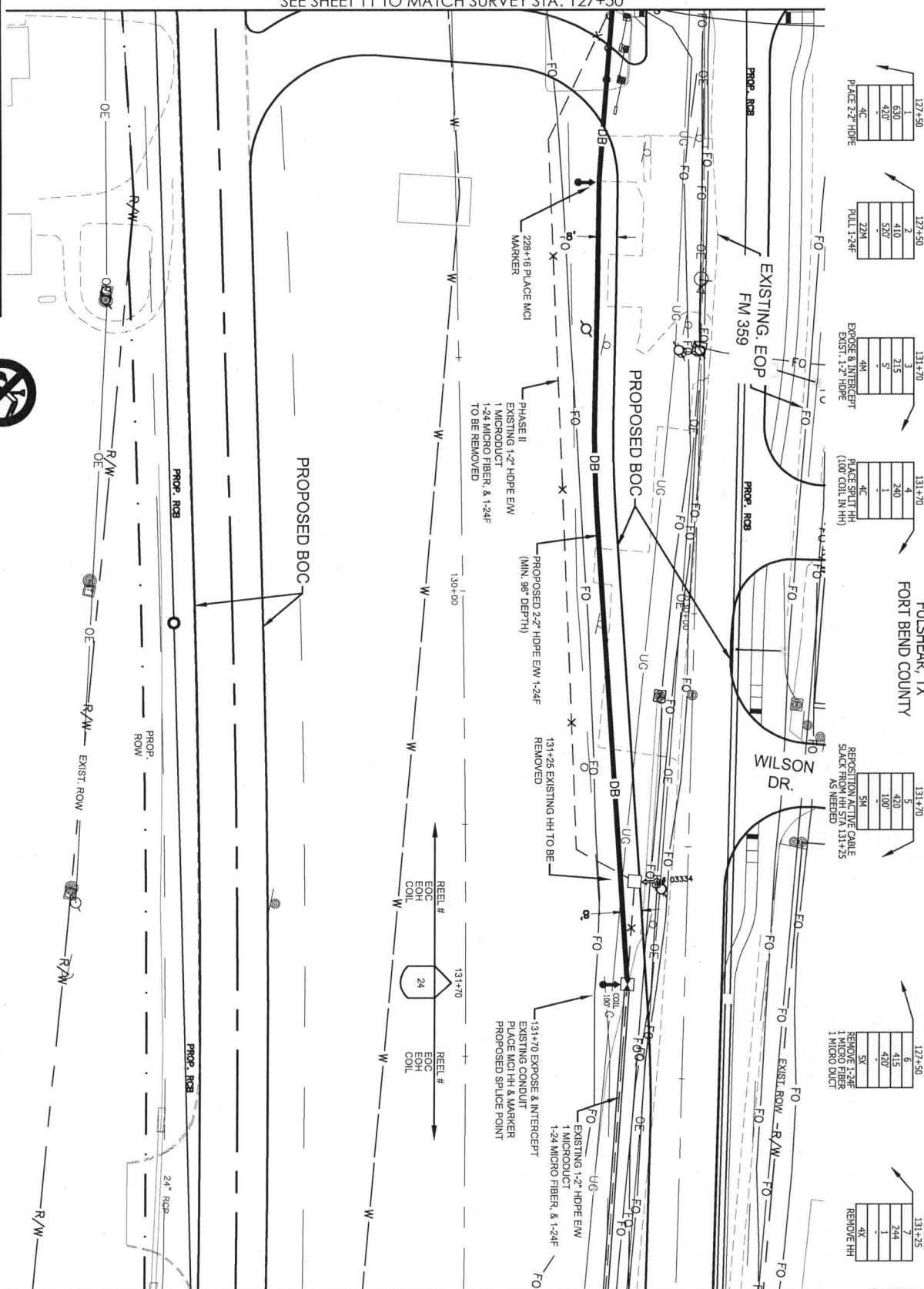
REVISIONS

SCALE  
HORIZONTAL: 1" = 40'  
VERTICAL: 1" = 10'

MP	N/A	TO MP	N/A
SHEET	11	OF	43

FILE: R40073-2-01011.AC.R&U

SEE SHEET 11 TO MATCH SURVEY STA. 127+50



SEE SHEET 13 TO MATCH SURVEY STA. 133+00

\*\*\*\* NOTE \*\*\*\*  
 UNDERGROUND UTILITIES HAVE BEEN PLOTTED FROM AVAILABLE RECORDS AND FIELD OBSERVATIONS BUT ARE NOT NECESSARILY EXACT. IT IS THE CONTRACTOR'S RESPONSIBILITY TO FIELD LOCATE AND VERIFY THE LOCATION, DEPTH AND CHARACTERISTICS OF ALL UTILITIES PRIOR TO CONSTRUCTION. ANY DAMAGES INCURRED SHALL BE AT THE EXPENSE OF THE CONTRACTOR.

CALL BEFORE YOU DIG  
 1-800-546-6005  
 72 HOURS NOTICE REQUIRED



**Verticalbusiness**  
 PROJECT: R400730-024  
 RCUP FM 1093 WESTPARK  
 EXTENSION PHASE II  
 FULSHEAR, TX

215	5
240	1
244	1
410	507
415	400
430	100
630	400
710	2

MCImetro  
 ACCESS TRANSMISSION SERVICES CORPORATION

OUTSIDE PLANT CONSTRUCTION  
 TITLE: FIBER OPTIC ROUTE  
 RCUP FM 1093 WESTPARK EXTENSION PHASE II  
 FULSHEAR, TX

DATE: 06/27/17  
 ENGINEER: JEFF BUEHLER  
 DRAWN BY: G.E.S.

DATE	DESCRIPTION	INITIAL

EXCEPT AS MAY BE OTHERWISE INDICATED OR NOTED ON THE DRAWINGS, THE CONTRACTOR SHALL BE RESPONSIBLE FOR OBTAINING ALL NECESSARY PERMITS AND APPROVALS FROM ALL AFFECTED AGENCIES AND UTILITIES PRIOR TO CONSTRUCTION. ANY DAMAGES INCURRED SHALL BE AT THE EXPENSE OF THE CONTRACTOR.

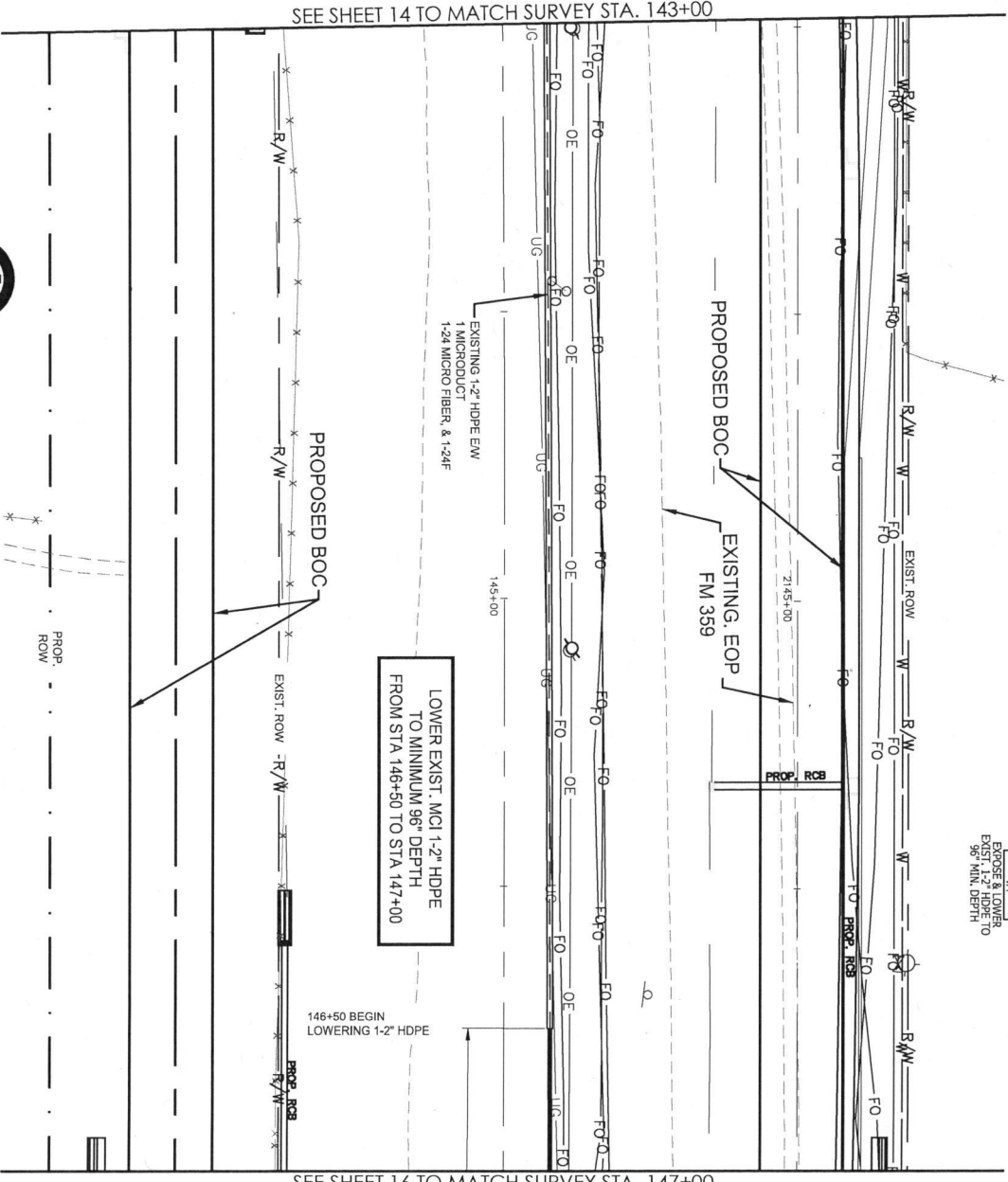
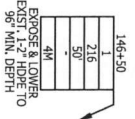
SCALE  
 HORIZONTAL: 1" = 40'  
 VERTICAL: 1" = 10'

MP N/A TO MP N/A  
 SHEET 12 OF 43  
 FILE: R400730-0101YAC-84.U





FULSHEAR, TX  
FORT BEND COUNTY



SEE SHEET 14 TO MATCH SURVEY STA. 143+00

SEE SHEET 16 TO MATCH SURVEY STA. 147+00

\*\*\* NOTE \*\*\*  
UNDERGROUND UTILITIES HAVE BEEN PLOTTED FROM AVAILABLE RECORDS AND FIELD OBSERVATIONS BUT ARE NOT NECESSARILY EXACT. IT IS THE CONTRACTOR'S RESPONSIBILITY TO VERIFY ALL UNDERGROUND UTILITIES AND TO PROTECT ALL UTILITIES INCURRED SHALL BE AT THE EXPENSE OF THE CONTRACTOR.

CALL BEFORE YOU DIG  
1-800-546-6005  
72 HOURS NOTICE REQUIRED



PROJECT: R40073-024  
RCUP FM 1093 WESTPARK  
EXTENSION PHASE II  
FULSHEAR, TX  
216 50

MCImetro  
ACCESS TRANSMISSION SERVICES CORPORATION  
OUTSIDE PLANT CONSTRUCTION  
TITLE: FIBER OPTIC ROUTE  
RCUP FM 1093 WESTPARK EXTENSION PHASE II  
FULSHEAR, TX

DATE:	06/27/17
ENGINEER:	JEFF BUEHLER
DRAWN BY:	G.F.S.
REVISIONS	
DATE	DESCRIPTION
SCALE	
HORIZONTAL:	1" = 40'
VERTICAL:	1" = 10'
MP	N/A
TO MP	N/A
SHEET	15 OF 43
FILE#	R40073-024010154C-8&U

EXCEPT AS NOTED, THE ENGINEER IS NOT RESPONSIBLE FOR THE ACCURACY OF THE DATA PROVIDED BY THE CLIENT. THE ENGINEER HAS REVIEWED THE DATA AND HAS FOUND IT TO BE REASONABLY ACCURATE. THE ENGINEER HAS NOT CONDUCTED A FIELD SURVEY OF THE DATA. THE ENGINEER HAS NOT CONDUCTED A FIELD SURVEY OF THE DATA. THE ENGINEER HAS NOT CONDUCTED A FIELD SURVEY OF THE DATA.

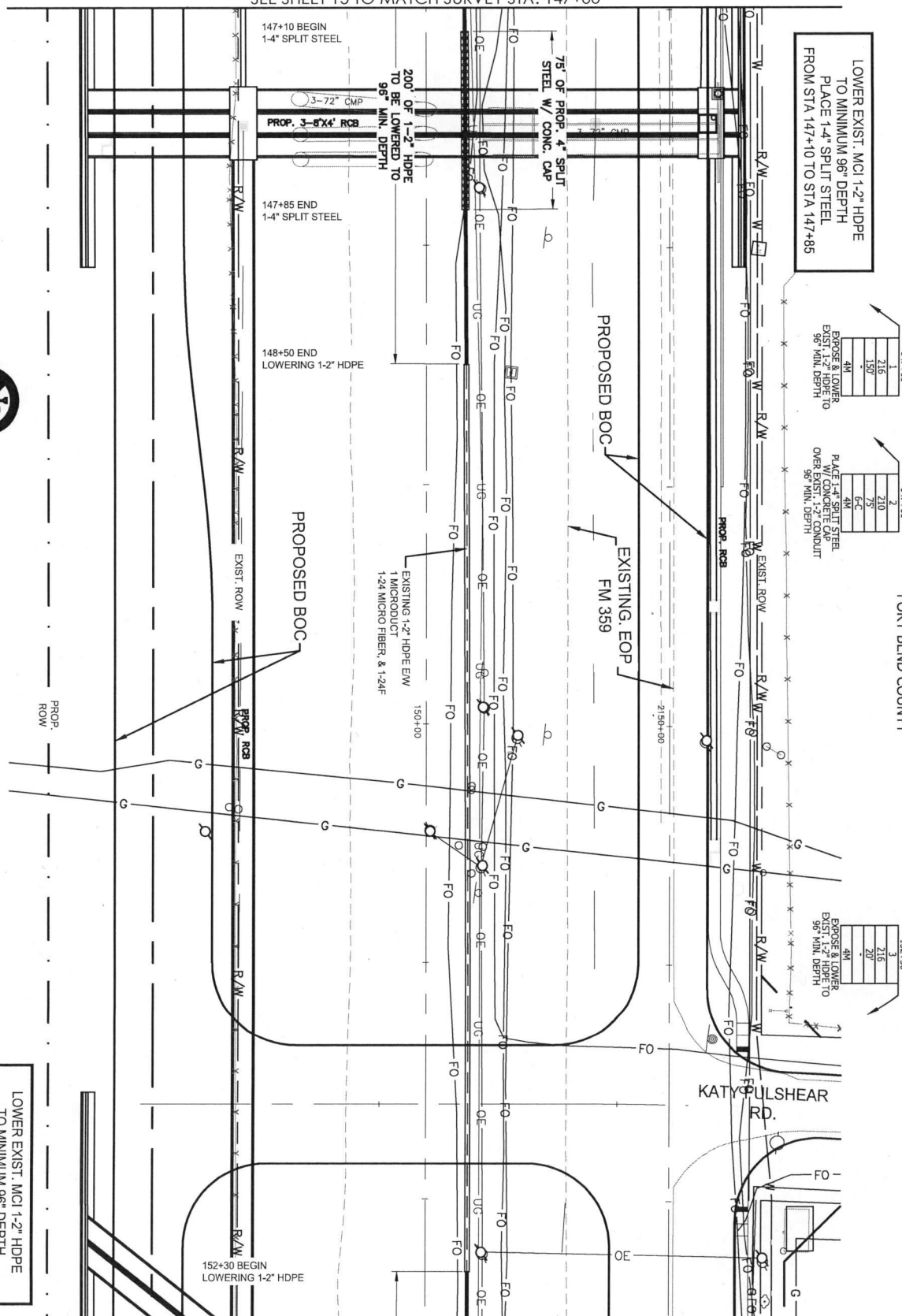
FULSHEAR, TX  
FORT BEND COUNTY



**vertz**onbusiness

PROJECT: R40073-024  
RCUP FM 1093 WESTPARK  
EXTENSION PHASE II  
FULSHEAR, TX  
210 75  
216 170'

SEE SHEET 15 TO MATCH SURVEY STA. 147+00



SEE SHEET 17 TO MATCH SURVEY STA. 152+50

\*\*\* NOTE \*\*\*  
UNDERGROUND UTILITIES HAVE BEEN PLOTTED FROM AVAILABLE RECORDS AND FIELD OBSERVATIONS BUT ARE NOT NECESSARILY EXACT. IT IS THE CONTRACTOR'S RESPONSIBILITY TO VERIFY THE LOCATION AND DEPTH OF ALL UTILITIES AND MAKE NECESSARY ADJUSTMENTS TO THE DESIGN AND CONSTRUCTION. THE CONTRACTOR SHALL BE RESPONSIBLE FOR ANY DAMAGE TO UTILITIES INCURRED WHILE AT THE EXPENSE OF THE CONTRACTOR.

CALL BEFORE YOU DIG  
1-800-485-8885  
72 HOURS NOTICE REQUIRED



DATE: 06/27/17		ENGINEER: JEFF BUEHLER	
DRAWN BY: G.F.S.		REVISIONS:	
DATE	DESCRIPTION	INITIAL	
ACCEPT: I HAVE BE THOROUGHLY REVIEWED BY CONTRACTOR THESE DRAWINGS AND SPECIFICATIONS AND I HEREBY CERTIFY THAT THEY COMPLY WITH ALL CITY, COUNTY AND STATE REQUIREMENTS AND I AM NOT PROVIDING ANY OTHER INFORMATION, CORRECTION OR ADDITION OF ANY KIND WITHOUT THE WRITTEN PERMISSION.			
SCALE			
HORIZONTAL: 1" = 40'			
VERTICAL: 1" = 10'			
MP	N/A	TO MP	N/A
SHEET	16	OF	43
FILE: R40073-04010.6A.C.8&U			

MCImetro  
ACCESS TRANSMISSION SERVICES CORPORATION

OUTSIDE PLANT CONSTRUCTION  
TITLE: FIBER OPTIC ROUTE  
RCUP FM 1093 WESTPARK EXTENSION PHASE II  
FULSHEAR, TX

LOWER EXIST. MCI 1-2" HDPE  
TO MINIMUM 96" DEPTH  
FROM STA 152+30 TO STA 152+50

LOWER EXIST. MCI 1-2" HDPE  
TO MINIMUM 96" DEPTH  
PLACE 1-4" SPLIT STEEL  
FROM STA 147+10 TO STA 147+85

147+00

4M	216
4M	210
4M	150'
4M	75'
4M	6-C

147+00

4M	210
4M	75'
4M	6-C

152+30

4M	216
4M	210
4M	20'

SEE SHEET 16 TO MATCH SURVEY STA. 152+50



SEE SHEET 18 TO MATCH SURVEY STA. 158+00

LOWER EXIST. MCI 1-2" HDPE  
TO MINIMUM 96" DEPTH  
FROM STA 152+50 TO STA 154+30  
PLACE 1-4" SPLIT STEEL  
FROM STA 152+90 TO STA 153+90

152+50	216	150"	4M
152+50	210	100"	5-C
152+50	210	100"	5-C
152+50	210	100"	5-C
152+50	210	100"	5-C

NOTE  
UNDERGROUND UTILITIES HAVE BEEN PLOTTED FROM AVAILABLE RECORDS AND FIELD OBSERVATIONS BUT ARE NOT NECESSARILY EXACT. IT IS THE CONTRACTOR'S RESPONSIBILITY TO VERIFY THE LOCATION AND DEPTH OF ALL UTILITIES PRIOR TO CONSTRUCTION. COMPLETE REPAIR OF ANY AND ALL DAMAGES INCURRED SHALL BE AT THE EXPENSE OF THE CONTRACTOR.

CALL BEFORE YOU DIG  
800-4-A-DIG  
72 HOURS NOTICE REQUIRED



**verizonbusiness**

PROJECT: R400734024  
RCUP FM 1093 WESTPARK  
EXTENSION PHASE II  
FULSHEAR, TX

210	100'
216	150'

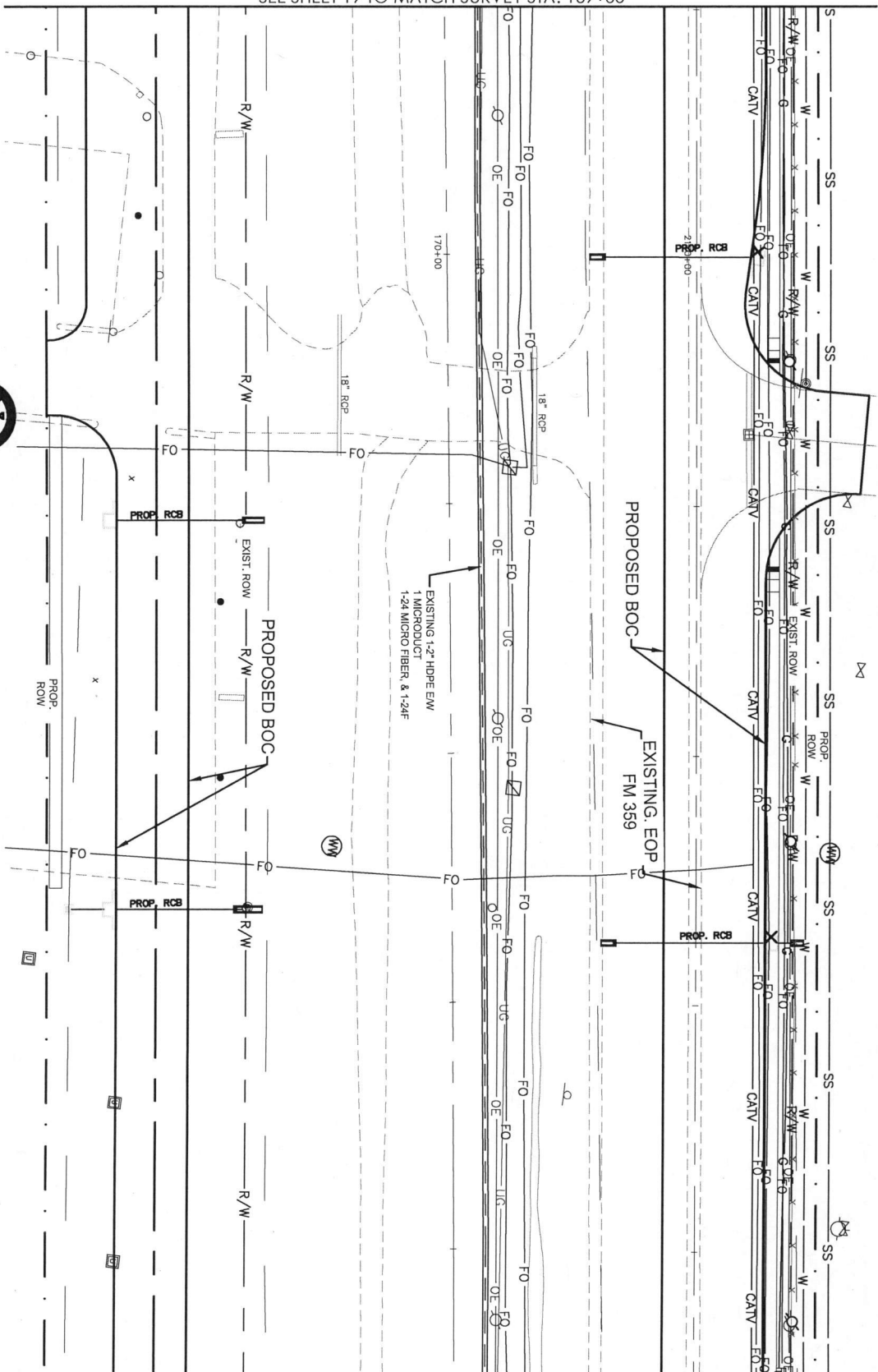
MCI metro ACCESS TRANSMISSION SERVICES CORPORATION		
OUTSIDE PLANT CONSTRUCTION TITLE: FIBER OPTIC ROUTE RCUP FM 1093 WESTPARK EXTENSION PHASE II FULSHEAR, TX		
DATE: 06/27/17	ENGINEER: JEFF BUEHLER	
DRAWN BY: G.F.S.	REVISIONS	
DATE	DESCRIPTION	INITIAL
SCALE		
HORIZONTAL: 1" = 40'	VERTICAL: 1" = 10'	
MP: N/A TO MP: N/A	MP: N/A TO MP: N/A	
SHEET 17 OF 43	FILE: R400734024\017A\C.84U	





SHEET FOR REFERENCE ONLY

FULSHEAR, TX  
FORT BEND COUNTY



SEE SHEET 19 TO MATCH SURVEY STA. 169+00

SEE SHEET 21 TO MATCH SURVEY STA. 174+50

\*\*\*\* NOTE \*\*\*\*  
UNDERGROUND UTILITIES HAVE BEEN PLOTTED FROM AVAILABLE RECORDS AND FIELD OBSERVATIONS BUT ARE NOT NECESSARILY EXACT. IT IS THE CONTRACTOR'S RESPONSIBILITY TO FIELD LOCATE ALL UNDERGROUND OBSTRUCTIONS AND UTILITIES PRIOR TO CONSTRUCTION. UNDISCOVERED OBSTRUCTIONS AND UTILITIES INCURRED SHALL BE AT THE EXPENSE OF THE CONTRACTOR.

CALL BEFORE YOU DIG  
1-800-545-8005  
72 HOURS NOTICE REQUIRED

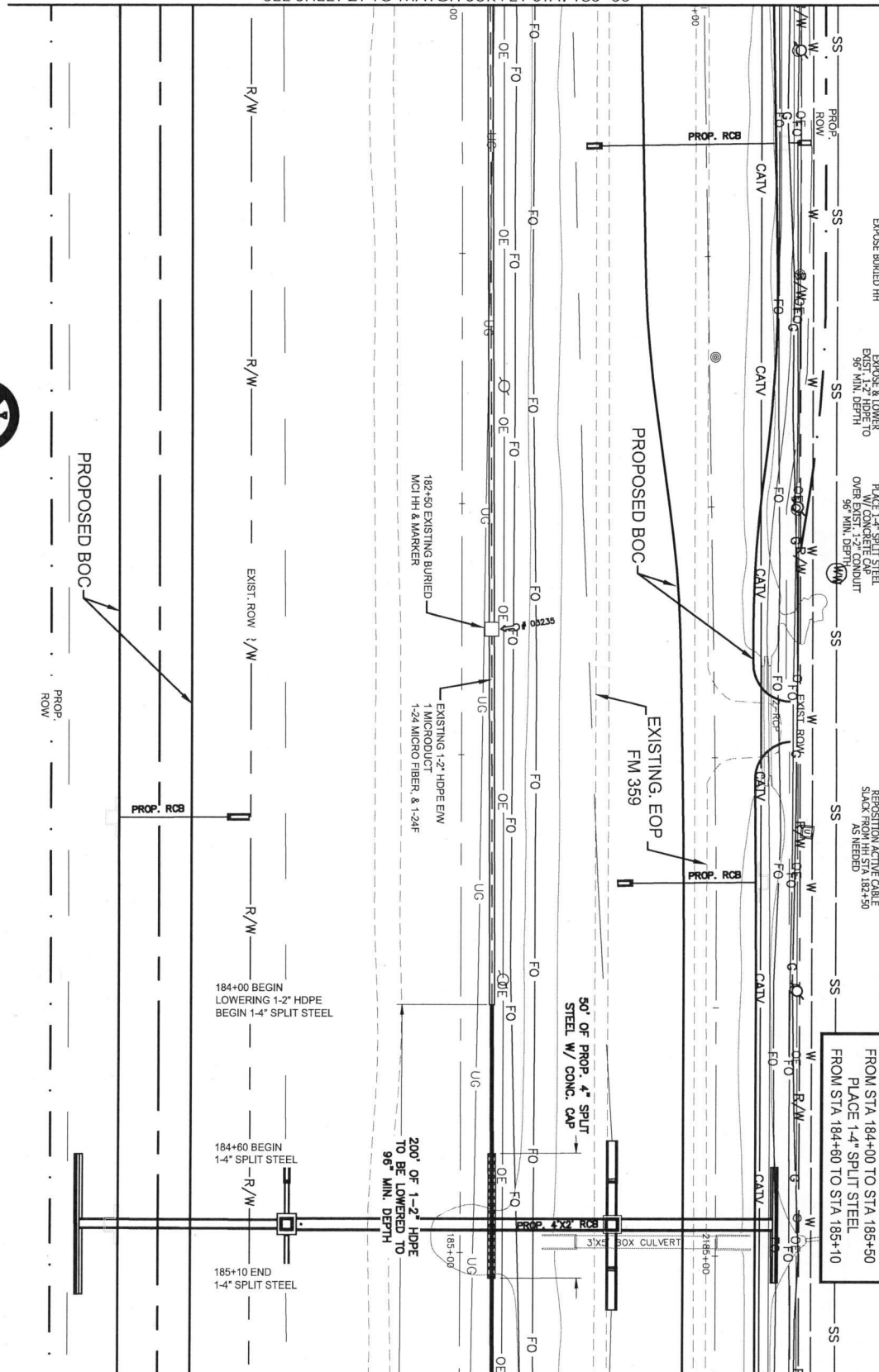


**vertzon**business  
PROJECT: R40073-0224  
RCUP FM 1093 WESTPARK  
EXTENSION PHASE II  
FULSHEAR, TX

MCImetro ACCESS TRANSMISSION SERVICES CORPORATION			
OUTSIDE PLANT CONSTRUCTION TITLE: FIBER OPTIC ROUTE			
RCUP FM 1093 WESTPARK EXTENSION PHASE II FULSHEAR, TX			
DATE:	06/27/17		
ENGINEER:	JEFF BUEHLER		
DRAWN BY:	G.F.S.		
REVISIONS			
DATE	DESCRIPTION	INITIAL	
SCALE			
HORIZONTAL:	1" = 40'		
VERTICAL:	1" = 10'		
MP	N/A	TO MP	N/A
SHEET	20	OF	43
FILE:R40073-24010204-C-R4U			



SEE SHEET 21 TO MATCH SURVEY STA. 180+00



SEE SHEET 23 TO MATCH SURVEY STA. 185+50

NOTE:  
UNDERGROUND UTILITIES HAVE BEEN PLOTTED FROM AVAILABLE RECORDS AND FIELD OBSERVATIONS BUT ARE NOT NECESSARILY EXACT. IT IS THE CONTRACTOR'S RESPONSIBILITY TO VERIFY THE LOCATION AND DEPTH OF ALL UTILITIES PRIOR TO CONSTRUCTION. ANY DISCREPANCIES SHOULD BE REPORTED TO THE ENGINEER IMMEDIATELY. THE CONTRACTOR SHALL BE RESPONSIBLE FOR OBTAINING ALL NECESSARY PERMITS AND INCURRED SHALL BE AT THE EXPENSE OF THE CONTRACTOR.

CALL BEFORE YOU DIG  
1-800-545-5008  
72 HOURS NOTICE REQUIRED



FULSHEAR, TX  
FORT BEND COUNTY

LOWER EXIST. MCI 1-2" HDPE TO MINIMUM 96" DEPTH FROM STA. 184+00 TO STA 185+50 PLACE 1-4" SPLIT STEEL FROM STA. 184+60 TO STA. 185+10



**Vertzonbusiness**  
PROJECT: R40073-024  
RCUP FM 1093 WESTPARK  
EXTENSION PHASE II  
FULSHEAR, TX

210	50
215A	150
216	100
420	

MCImetro ACCESS TRANSMISSION SERVICES CORPORATION		
OUTSIDE PLANT CONSTRUCTION TITLE: FIBER OPTIC ROUTE RCUP FM 1093 WESTPARK EXTENSION PHASE II FULSHEAR, TX		
DATE:	06/27/17	
ENGINEER:	JEFF BUEHLER	
DRAWN BY:	GT/SS	
REVISIONS		
DATE	DESCRIPTION	INITIAL

SCALE	
HORIZONTAL:	1" = 40'
VERTICAL:	1" = 10'
MP	N/A TO MP
SHEET	22 OF 43
FILE:	R40073-2401022A.C.R&U



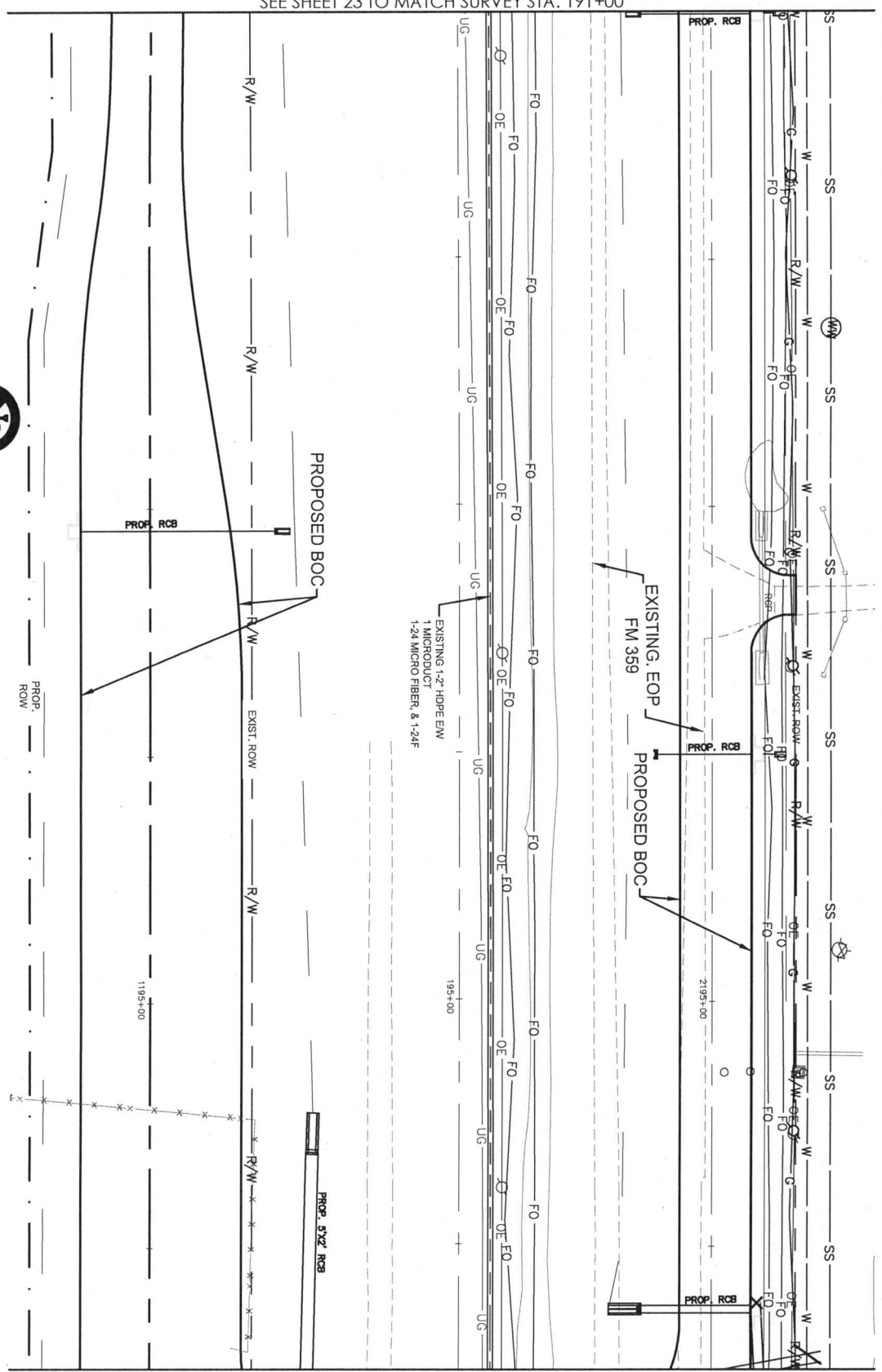
SHEET FOR REFERENCE ONLY

FULSHEAR, TX  
FORT BEND COUNTY



**Vertical**  
business

PROJECT: R40073-024  
RCUP FM 1093 WESTPARK  
EXTENSION PHASE II  
FULSHEAR, TX



SEE SHEET 23 TO MATCH SURVEY STA. 191+00

SEE SHEET 25 TO MATCH SURVEY STA. 196+50

\*\*\*\* NOTE \*\*\*\*  
UNDERGROUND UTILITIES HAVE BEEN PLOTTED FROM AVAILABLE RECORDS AND FIELD OBSERVATIONS BUT ARE NOT NECESSARILY EXACT. IT IS THE CONTRACTOR'S RESPONSIBILITY TO FIELD LOCATE ALL DEPENDENT GAS, WATER, AND SANITATION UTILITIES PRIOR TO CONSTRUCTION. ANY DAMAGE TO EXISTING UTILITIES INCURRED SHALL BE AT THE EXPENSE OF THE CONTRACTOR.



CALL BEFORE YOU DIG  
1-800-545-6005  
72 HOURS NOTICE REQUIRED

MCImetro ACCESS TRANSMISSION SERVICES CORPORATION		
OUTSIDE PLANT CONSTRUCTION TITLE: FIBER OPTIC ROUTE RCUP FM 1093 WESTPARK EXTENSION PHASE II FULSHEAR, TX		
DATE: 06/27/17	ENGINEER: JEFF BUEHLER	
DRAWN BY: G.F.S.		
REVISIONS		
DATE	DESCRIPTION	INITIAL
HORIZONTAL: 1" = 40'		
VERTICAL: 1" = 10'		
MP	N/A TO MP	N/A
SHEET	24 OF	43
FILE: R40073-2401024A.C.RJU		

























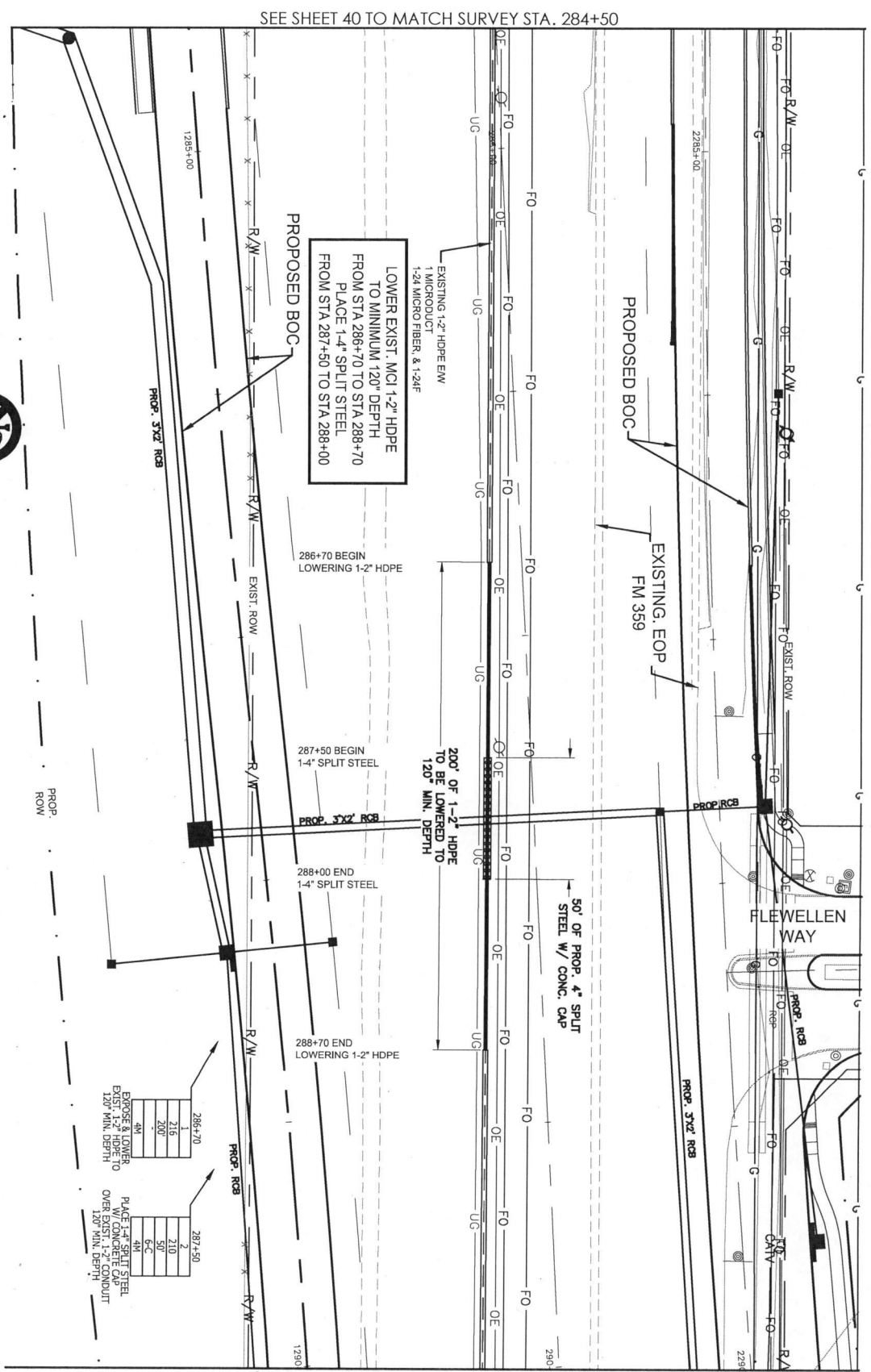








FULSHEAR, TX  
FORT BEND COUNTY



NOTE:  
UNDERGROUND UTILITIES HAVE BEEN PLOTTED FROM AVAILABLE RECORDS AND FIELD SURVEY. THE CONTRACTOR SHALL VERIFY THE LOCATION AND DEPTH OF ALL UTILITIES PRIOR TO CONSTRUCTION. COMPLETE REPAIR OF ANY AND ALL DAMAGES INCURRED SHALL BE AT THE EXPENSE OF THE CONTRACTOR.

CALL BEFORE YOU DIG  
72 HOURS NOTICE REQUIRED



SEE SHEET 40 TO MATCH SURVEY STA. 284+50

SEE SHEET 42 TO MATCH SURVEY STA. 290+00

**Verizonbusiness**

PROJECT: R40073-004  
 RCUP FM 1093 WESTPARK  
 EXTENSION PHASE II  
 FULSHEAR, TX  
 210 OF 50  
 214 OF 200

MCImetro  
ACCESS TRANSMISSION SERVICES CORPORATION

OUTSIDE PLANT CONSTRUCTION  
TITLE: FIBER OPTIC ROUTE  
RCUP FM 1093 WESTPARK EXTENSION PHASE II  
FULSHEAR, TX

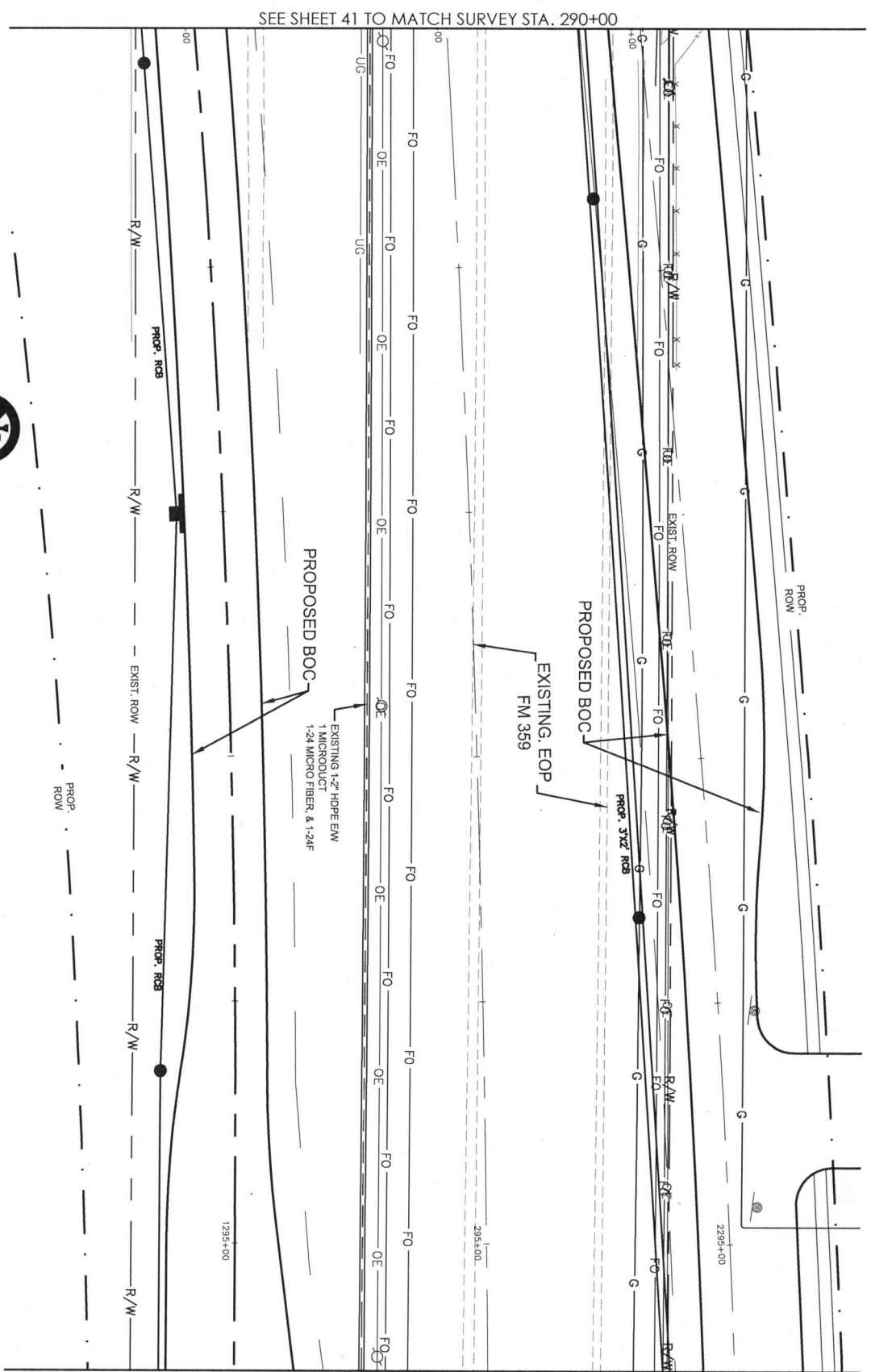
DATE:	06/27/17
ENGINEER:	JEFF BUEHLER
DRAWN BY:	G.F.S.
REVISIONS:	
DATE:	
DESCRIPTION:	
INITIAL:	

SCALE  
 HORIZONTAL: 1" = 40'  
 VERTICAL: 1" = 10'

MP N/A TO MP N/A  
 SHEET 41 OF 43  
 FILE: R40073-2401041.C:88.U

SHEET FOR REFERENCE ONLY

FULSHEAR, TX  
FORT BEND COUNTY



SEE SHEET 41 TO MATCH SURVEY STA. 290+00

SEE SHEET 43 TO MATCH SURVEY STA. 295+50

NOTE:  
UNDERGROUND UTILITIES HAVE BEEN PLOTTED FROM AVAILABLE RECORDS AND FIELD OBSERVATIONS BUT ARE NOT NECESSARILY EXACT. IT IS THE CONTRACTOR'S RESPONSIBILITY TO VERIFY THE LOCATION AND DEPTH OF ALL UTILITIES PRIOR TO CONSTRUCTION. COMPLETE REPAIR OF ANY AND ALL DAMAGES INCURRED SHALL BE AT THE EXPENSE OF THE CONTRACTOR.

CALL BEFORE YOU DIG  
800-555-8008  
72 HOURS NOTICE REQUIRED



PROJECT: R-40073-004  
RCUP FM 1093 WESTPARK  
EXTENSION PHASE II  
FULSHEAR, TX

McImetro  
ACCESS TRANSMISSION SERVICES CORPORATION

OUTSIDE PLANT CONSTRUCTION  
TITLE: FIBER OPTIC ROUTE  
RCUP FM 1093 WESTPARK EXTENSION PHASE II  
FULSHEAR, TX

DATE:	06/27/17		
ENGINEER:	JEFF BLEHLER		
DRAWN BY:	GJS		
REVISIONS:			
DATE:			
DESCRIPTION:			
INITIAL:			
<p>VERTICAL: 1" = 10'</p> <p>HORIZONTAL: 1" = 40'</p> <p>SCALE</p>			
MP	N/A	TO MP	N/A
SHEET	42	OF	43
FILE: R40073-2401042A.CRXU			



# Exhibit B

## MCI Communication Services, Inc. Construction Cost Estimate

(3 Pages That Follow)

\_\_\_\_\_  
Date  
Fort Bend County

RNH  
Initial  
8/14/17  
Date  
MCI



## OUTSIDE PLANT CONSTRUCTION

### COST ESTIMATE (ACTIVE APPROVED )

08/07/2017

<b>Project/AFE #:</b> R40073-024	<b>Revision:</b> 1	<b>Date Prepared:</b>	01/11/2017
<b>Title</b>	FULSHEAR TX RCUP FM 1093 WESTPARK EXTN PH 2	<b>Engineer:</b>	JEFFERY BUEHLER
<b>Site Code:</b>	FFBFTX	<b>Manager:</b>	LARRY SAUNDERS
<b>Investigation#:</b>	4526-2016	<b>City:</b>	FULSHEAR
<b>Disposition:</b>	REFUNDABLE CUP	<b>State:</b>	TX
		<b>Footage Impact:</b>	3,144

#### DESCRIPTION OF WORK

The contractor will provide engineering, permitting and project management services per unit rate quote as outlined Below to relocate the existing metro facilities along FM 1093 due to the proposed Westpark Extension project. Total length for 4,274' and will consist of 1,774' of new underground and exposing and lowering approximately 2,500' of existing conduit.

#### SCHEDULE

<b>Eng. Start:</b>	12/12/2016	<b>Const. Start:</b>	08/21/2017
<b>Eng. Complete:</b>	06/30/2017	<b>Const. Complete:</b>	10/13/2017

#### SUMMARY OF ESTIMATED COSTS

A):	ENGINEERING:	\$17,182.20
B):	INSPECTION SERVICES:	\$1,600.00
C):	FURNISHED MATERIALS:	\$3,705.00
D):	CONTRACTOR UNIT PRICE SCHEDULE:	\$113,006.00
E):	SPLICING LABOR:	\$3,200.00
F):	<b>TOTAL:</b>	<b>\$138,693.20</b>

Construction Manager: \_\_\_\_\_

Date: \_\_\_\_\_

## OUTSIDE PLANT CONSTRUCTION COST ESTIMATE (ACTIVE APPROVED )

08/07/2017

Project/AFE #: R40073-024 FULSHEAR TX RCUP FM 1093 WESTPARK EXTN PH 2

Revision: 1

### A) ENGINEERING

INTERNAL - REF DESCRIPTION:	QTY:	U/M:	UNIT \$:	EXT. \$:
OSP Engineers	60	hrs	100.00	\$6,000.00
Documentation	24	hrs	100.00	\$2,400.00
<b>CONTRACT - REF DESCRIPTION:</b>				
Project Management (with inspection) - Metro - >500	3144	ft.	0.95	\$2,986.80
Cable Design - Metro Underground - >2,500 ft	1774	ft.	1.35	\$2,394.90
Cable Design - Existing Underground conduit - >500 ft	1370	ft.	0.45	\$616.50
Investigations > 2500 ft	18560	ft.	0.15	\$2,784.00
<b>ENGINEERING Sub TOTAL:</b>				<b>\$17,182.20</b>

### B) INSPECTION SERVICES

INTERNAL - REF DESCRIPTION:	QTY:	U/M:	UNIT \$:	EXT. \$:
OPS Inspection (RMOD)	16	hrs	100.00	\$1,600.00
<b>EXTERNAL - REF DESCRIPTION:</b>				
<b>INSPECTION SERVICES Sub TOTAL:</b>				<b>\$1,600.00</b>

### C) FURNISHED MATERIALS

REF DESCRIPTION:	QTY:	U/M:	UNIT \$:	EXT. \$:
24 Fiber LT Single Mode Armored Cable	2500	ft.	0.27	\$675.00
Signs, post, hardware	5	ea.	30.00	\$150.00
Handholes	2	ea.	790.00	\$1,580.00
Splice Materials Per Splice Location (216 or smaller)	2	ea.	650.00	\$1,300.00
<b>FURNISHED MATERIALS Sub TOTAL:</b>				<b>\$3,705.00</b>

### D) CONTRACTOR UNIT PRICE SCHEDULE

REF DESCRIPTION:	QTY:	U/M:	UNIT \$:	EXT. \$:
Place Conduit	450	lf	50.00	\$22,500.00
Place handhole	2	ea.	700.00	\$1,400.00
Place Cable	1974	lf	1.00	\$1,974.00
Adjust Active Cable Slack	500	lf	0.75	\$375.00

## OUTSIDE PLANT CONSTRUCTION COST ESTIMATE (ACTIVE APPROVED )

08/07/2017

Project/AFE #: R40073-024 FULSHEAR TX RCUP FM 1093 WESTPARK EXTN PH 2

Revision: 1

Directional bore	1774	lf	18.00	\$31,932.00
Place buried cable markers & water crossing signs	5	ea.	75.00	\$375.00
Remove Handhole	1	ea.	500.00	\$500.00
Expose and intercept Exist. conduit	10	lf	45.00	\$450.00
Expose Burried Handhole	2	ea.	250.00	\$500.00
Expose and Lower exist. 1-2" conduit	1370	lf	35.00	\$47,950.00
Remove 1-24f, 1 micro fiber, 1 micro duct	1700	lf	1.50	\$2,550.00
Mobilization	1	ea.	2500.00	\$2,500.00

CONTRACTOR UNIT PRICE SCHEDULE Sub TOTAL:

\$113,006.00

### E) SPLICING LABOR

REF DESCRIPTION:	QTY:	U/M:	UNIT \$:	EXT. \$:
OPS Splicing Support	32	hrs	100.00	\$3,200.00
SPLICING LABOR Sub TOTAL:				\$3,200.00

**Exhibit C**

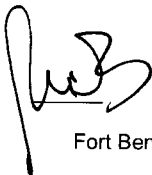
**MCI Communication Services, Inc.**  
**Schedule of Work**  
**and**  
**Estimated Dates of Completion.**

(As Shown Below)

**Construction Schedule:**

**Begin Construction: September 1, 2017 (or sooner)**

**Complete Construction: October 31, 2017**

  
\_\_\_\_\_  
Date  
Fort Bend County

  
\_\_\_\_\_  
Initial  
MCI  
  
\_\_\_\_\_  
Date

# CERTIFICATE OF INTERESTED PARTIES

FORM 1295

1 of 1

Complete Nos. 1 - 4 and 6 if there are interested parties.  
 Complete Nos. 1, 2, 3, 5, and 6 if there are no interested parties.

**OFFICE USE ONLY  
 CERTIFICATION OF FILING**

**1 Name of business entity filing form, and the city, state and country of the business entity's place of business.**

MCI Communications Services, Inc.  
 Irving, TX United States

Certificate Number:  
 2017-249593

Date Filed:  
 08/14/2017

**2 Name of governmental entity or state agency that is a party to the contract for which the form is being filed.**

Fort Bend County

Date Acknowledged:

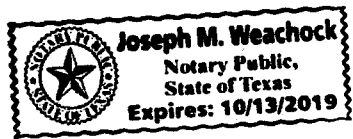
**3 Provide the identification number used by the governmental entity or state agency to track or identify the contract, and provide a description of the services, goods, or other property to be provided under the contract.**

23381 - 07/11/17  
 Utility Relocation regarding FM 1093/Westpark, Mobility Bond Project No. 748

4	Name of Interested Party	City, State, Country (place of business)	Nature of interest (check applicable)	
			Controlling	Intermediary

5 Check only if there is NO Interested Party.

6 AFFIDAVIT I swear, or affirm, under penalty of perjury, that the above disclosure is true and correct.



*Robert J. Hayes*  
 Signature of authorized agent of contracting business entity  
**Robert J. HAYES**

AFFIX NOTARY STAMP / SEAL ABOVE

Sworn to and subscribed before me, by the said **ROBERT J. HAYES**, this the **15<sup>th</sup>** day of **AUGUST** 20 **17**, to certify which, witness my hand and seal of office.

*Joseph M. Weachock* Signature of officer administering oath  
**JOSEPH M. WEACHOCK** Printed name of officer administering oath  
**NOTARY PUBLIC** Title of officer administering oath

