

**REVIEW BY FORT BEND COUNTY
COMMISSIONERS COURT**

**Fort Bend County
Engineering Department**
301 Jackson Suite 401
Richmond, Texas 77469
281.633.7500
Permits@fortbendcountytexas.gov

☒ Right of Way Permit
☐ Commercial Driveway Permit

Permit No: 2017-14236

Applicant: AT&T, Inc.

Job Location Site: NORTH SIDE BRAZOS RIVER BRIDGE, SUGAR LAND, TX 77479

Bond No. 0111-001000000-01 **Date of Bond:** 3/6/2007 **Amount:** \$25,000.00

The above applicant came to make use of certain Fort Bend County property subject to, "The Order Regulating the Laying, Construction, Maintenance, and Repair of Buried Cables, Conduits, and Pole Lines, In, Under, Across or Along Roads, Streets, Highways, and Drainage Ditches in Fort Bend County, Texas, Under the Jurisdiction of the Commissioners Court of Fort Bend County, Texas," as passed by the Commissioners Court of Fort Bend County, Texas, of the Minutes of the Commissioners Court of Fort Bend County, Texas, to the extent that such order is not inconsistent with Chapter 181, Vernon's Texas Statutes and Codes Annotated.

Notes:

1. Evidence of review by the Commissioners Court must be kept on the job site and failure to do so constitutes grounds for job shutdown.
2. Written notices are required:
 - a. 48 hours in advance of construction start up, and
 - b. When construction is completed and ready for final inspection, submit notification to Permit Administrator thru MyGovernmentOnline.org portal.
3. This permit expires one (1) year from date of permit if construction has not commenced.

On this 18th day of July, 2017, Upon Motion of Commissioner Meyers, seconded by Commissioner Morales, duly put and carried, it is ORDERED, ADJUDGED AND DECREED that said notice of said above purpose is hereby acknowledged by the Commissioners Court of Fort Bend County, Texas, and that said notice be placed on record according to the regulation order thereof.

Signature

Presented to Commissioners Court and approved.

By: Charles O. Ay

Date Recorded 7-21-2017 Comm. Court No. 9I

for

County Engineer

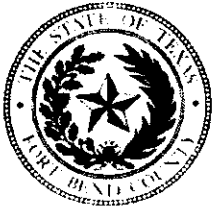
Clerk of Commissioners Court

By: N/A

By: Sandra Wallis

Drainage District Engineer/Manager

Deputy



**PERMIT APPLICATION REVIEW FORM FOR
CABLE, CONDUIT, AND POLE LINE ACTIVITY
IN FORT BEND COUNTY**

**Fort Bend County
Engineering Department**
301 Jackson Suite 401
Richmond, Texas 77469
281.633.7500
Permits@fortbendcountytx.gov

- ☒ Right of Way Permit
☐ Commercial Driveway Permit

Permit No: 2017-14236

The following "Notice of Proposed Cable, Conduit, and/or Pole Line activity in Fort Bend County" and accompanying attachments have been reviewed and the notice conforms to appropriate regulations set by Commissioner's Court of Fort Bend County, Texas.

(1) COMPLETE APPLICATION FORM:

- ☒ a. Name of road, street, and/or drainage ditch affected.
☒ b. Vicinity map showing course of directions
☒ c. Plans and specifications

(2) BOND:

- ☐ County Attorney, approval when applicable.
- ☒ Perpetual bond currently posted. Bond No. Amount: \$25,000.00
- ☐ Performance bond submitted. Bond No: Amount:
- ☐ Cashier's Check Check No: Amount:

(3) DRAINAGE DISTRICT APPROVAL (WHEN APPLICABLE):

Drainage District Approval

Date

We have reviewed this project and agree it meets minimum requirements.

Charles O. Ay

Permit Administrator

7/10/17

Date

TO ALIF CO.



THIS IS A TEMPORARY FIX.
RELOCATE FIBER TO
EVD # A00-V4LB.

CONTRACTOR NOTE:
REMOVE AERIAL CABLE, DIG UP BURIED FIBER
AND RELOCATE TO EVD # A00-V4LB. THEN
GRAND PAVEMENT BRIDGE ELEVATION TO STREET LIGHT,
ALONG STREET LIGHT CONDUIT RUN CROSSING
EXISTING PAVEMENT AND THEN STRAIGHT EAST TO
EXISTING PAVEMENT.

LEGEND

---	PROPOSED RELOCATED 438 FIBER
---	EXISTING WINDSTREAM FIBER
---	EXISTING BURIED FIBER CABLE
---	EXISTING PERIAL FIBER CABLE
---	EDGE OF PAVEMENT
---	RIGHT OF WAY
X	POWER POLES

FORT BEND COUNTY NOTIFICATION

ATTN: BRONKHORST
438-438 FIBER
281-341-4312



SPECIAL
CIRCUITS N
6203
FORWARDED N
PERMIT Y
REQUIRED Y

OPERATING RANGE OF JOB STEPS
TASK TO

MTRC

TRANSMISSION ZONE
RZ 0 CZ 0
TAPER CODE 11432

CAUTION HIGH VOLTAGE
KV 0.00
AERIAL N
BURIED N
HIGHWAY PERMIT NO.

Utility CO
REP NAME
REP TEL NO.
POLE CONTACTS (+) 0 (-) 0

Utility CO
REP NAME
REP TEL NO.
POLE CONTACTS (+) 0 (-) 0

Utility CO
REP NAME
REP TEL NO.
POLE CONTACTS (+) 0 (-) 0

PROJECT NO A0101CX

TOT. PRINTS 2
NPA/NNX: 281-722
PRT: 281222

EXCH. RICH-RDSE
TAX DIST. F0009
GEO LOC. W99222

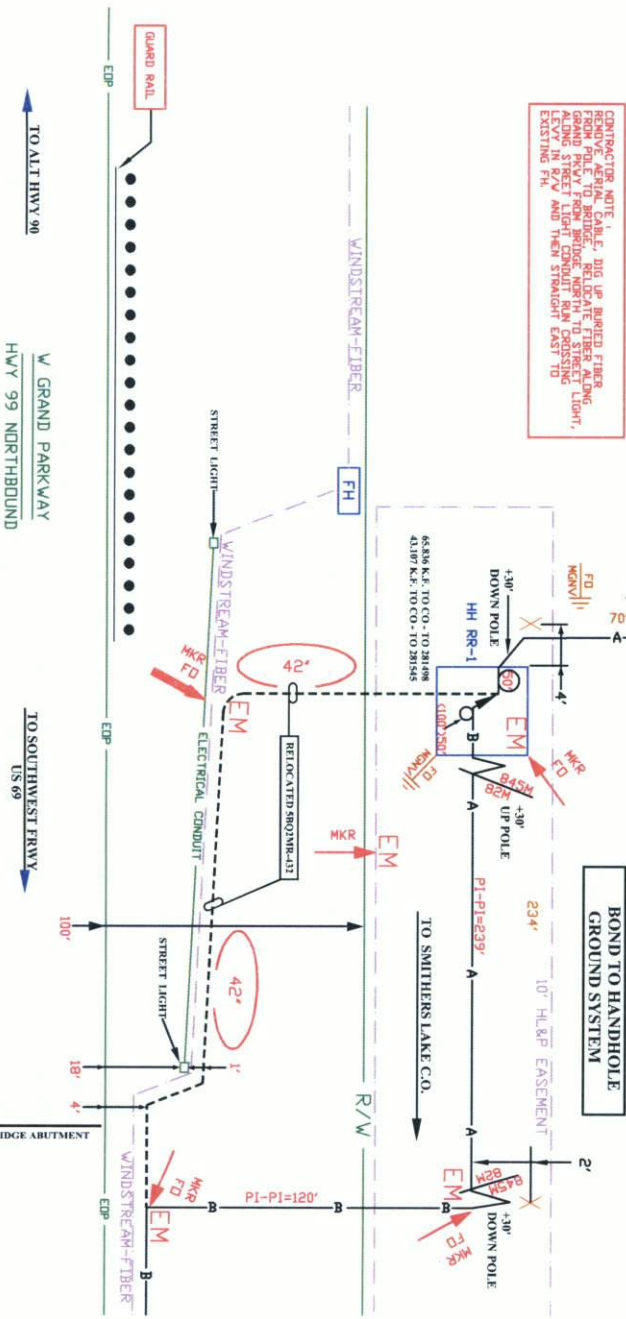
ENGR. 48
TELEPHONE NO. (281) 341-4312

REC. REF. 1ST
MAP REF.
SCALE 100'

ISSUE DATE 05/30/2017
PROD. TITLE CABLE RELOC. GRAND PAV. & BRIDGE
REV. NUMBER
DATE REV.

Not for use or disclosure outside the AIT companies except under written agreement.

Proprietary



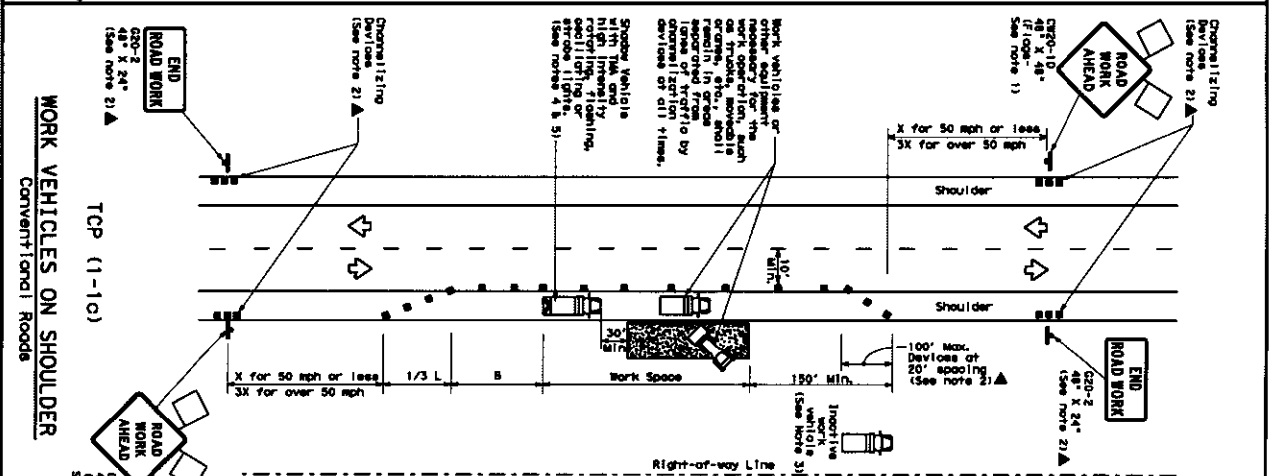
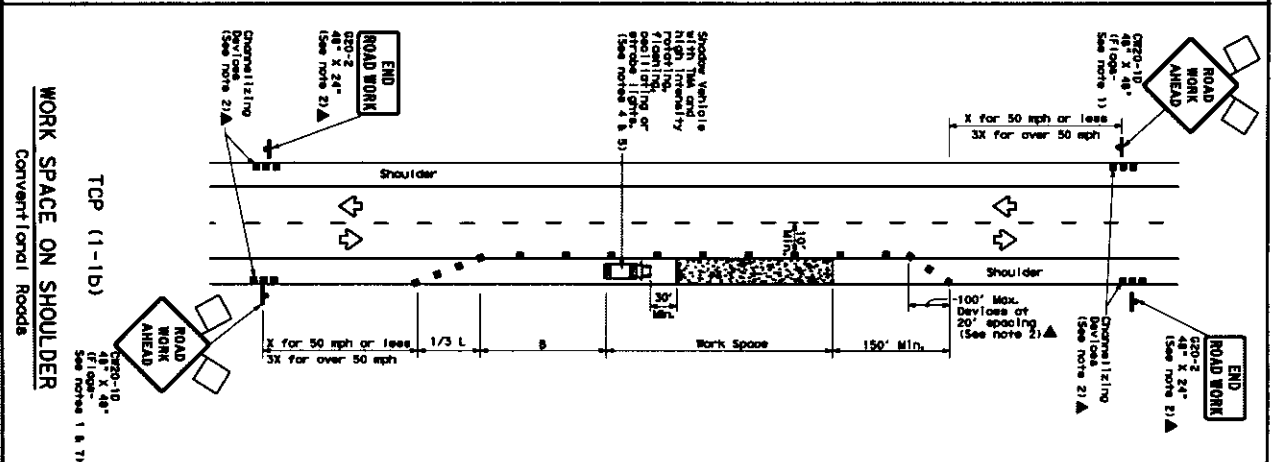
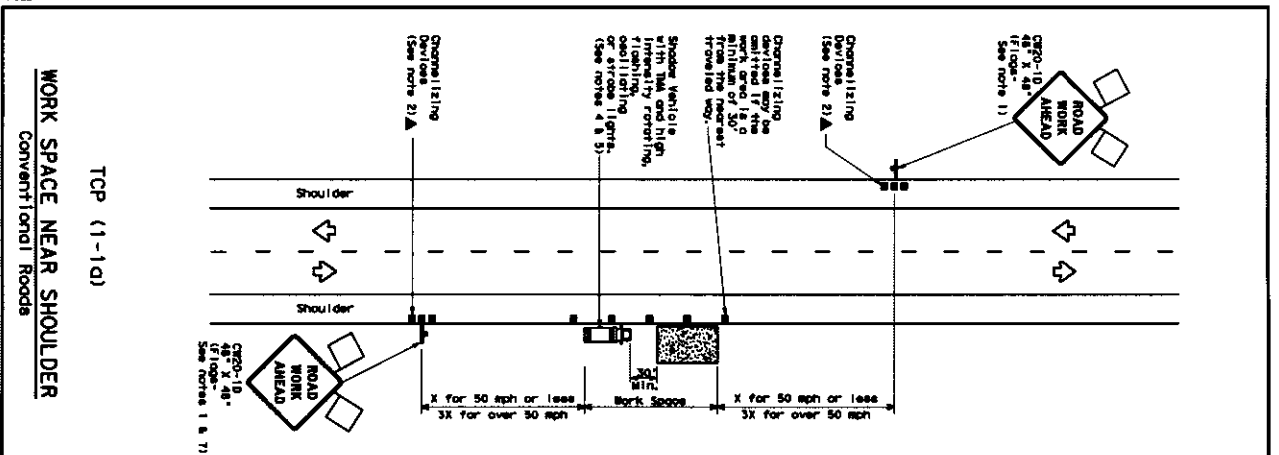
TO ALT HWY 90

W GRAND PARKWAY
HWY 99 NORTHBOUND

TO SOUTHWEST FRWY
US 69

BRIDGE ABUTMENT

DATE:
FILE:



LEGEND	
	Type 3 Mark 1000s
	Heavy Sport Vehicle
	Trail per Assaulted Flanking Arrow Board
	Sign
	F100
	Channelized Diversion
	Traffic Assisted (TMA)
	Perforated Channelized Diversion Sign (PDS)
	Traffic flow
	F100

[illegible]

***Taper lengths have been rounded off.
L=Length of Taper (FT) W=Width of Ditch (FT) S=Poised Speed (MPH)

TYPICAL USAGE				
MODEL	SHORT DURATION	SHORT TERM STATIONARY	INTERMEDIATE TERM STATIONARY	LONG TERM STATIONARY
	✓	✓		

GENERAL NOTES

1. Flashes attached to signs where shown are REQUIRED.
2. Signs with reflective sheeting are RECOMMENDED except those designed with reflective sheeting.
3. In the daytime, or for night/low-visibility work, as approved by the Engineer:
4. Intensive work, daytime or other equipment should be performed near the work.
5. A flashing yellow light should be used if possible.
6. A flashing vehicle with a light should be used if possible, or a person offering the performance or quality of the work. If neither can be used, a person with a red vest or work condition reducing the traffic control should be used.
7. A person with a red vest or work condition reducing the traffic control may be substituted for the flashing vehicle and the person with a red vest.
8. Additional Signs/Vehicles with this sign may be positioned at the power, service, next to those shown to prevent either work spaces.
9. A 10' x 14' trailer should work on divided highways, expressway and freeways.
10. CR-1-3 "SIGNALLED" signs may be used in place of CR-2-10 "ROAD WORK AHEAD" signs for straight work on conventional roadways.

For construction or maintenance contract work, project requirements for shadow vehicles can be found in the project GENERAL NOTES for Item 502, Barriocodes, Signs and Traffic Handling.

Texas Department of Transportation
Traffic Operations Division

TRAFFIC CONTROL PLAN
CONVENTIONAL ROAD
SHOULDER WORK

TCP (1-1)-12

② 12001	UNION	1985	Q1		Q2		Q3		Q4	
MTS 110100			Q1	Q2	Q3	Q4				
2-94	2-12		Q1	Q2	Q3	Q4				
2-95			Q1	Q2	Q3	Q4				
2-96			Q1	Q2	Q3	Q4				
2-97			Q1	Q2	Q3	Q4				
2-98			Q1	Q2	Q3	Q4				
2-99			Q1	Q2	Q3	Q4				
2-00			Q1	Q2	Q3	Q4				
2-01			Q1	Q2	Q3	Q4				
2-02			Q1	Q2	Q3	Q4				
2-03			Q1	Q2	Q3	Q4				
2-04			Q1	Q2	Q3	Q4				
2-05			Q1	Q2	Q3	Q4				
2-06			Q1	Q2	Q3	Q4				
2-07			Q1	Q2	Q3	Q4				
2-08			Q1	Q2	Q3	Q4				
2-09			Q1	Q2	Q3	Q4				
2-10			Q1	Q2	Q3	Q4				
2-11			Q1	Q2	Q3	Q4				
2-12			Q1	Q2	Q3	Q4				
2-13			Q1	Q2	Q3	Q4				
2-14			Q1	Q2	Q3	Q4				
2-15			Q1	Q2	Q3	Q4				
2-16			Q1	Q2	Q3	Q4				
2-17			Q1	Q2	Q3	Q4				
2-18			Q1	Q2	Q3	Q4				
2-19			Q1	Q2	Q3	Q4				
2-20			Q1	Q2	Q3	Q4				
2-21			Q1	Q2	Q3	Q4				
2-22			Q1	Q2	Q3	Q4				
2-23			Q1	Q2	Q3	Q4				
2-24			Q1	Q2	Q3	Q4				
2-25			Q1	Q2	Q3	Q4				
2-26			Q1	Q2	Q3	Q4				
2-27			Q1	Q2	Q3	Q4				
2-28			Q1	Q2	Q3	Q4				
2-29			Q1	Q2	Q3	Q4				
2-30			Q1	Q2	Q3	Q4				
2-31			Q1	Q2	Q3	Q4				
2-32			Q1	Q2	Q3	Q4				
2-33			Q1	Q2	Q3	Q4				
2-34			Q1	Q2	Q3	Q4				
2-35			Q1	Q2	Q3	Q4				
2-36			Q1	Q2	Q3	Q4				
2-37			Q1	Q2	Q3	Q4				
2-38			Q1	Q2	Q3	Q4				
2-39			Q1	Q2	Q3	Q4				
2-40			Q1	Q2	Q3	Q4				
2-41			Q1	Q2	Q3	Q4				
2-42			Q1	Q2	Q3	Q4				
2-43			Q1	Q2	Q3	Q4				
2-44			Q1	Q2	Q3	Q4				
2-45			Q1	Q2	Q3	Q4				
2-46			Q1	Q2	Q3	Q4				
2-47			Q1	Q2	Q3	Q4				
2-48			Q1	Q2	Q3	Q4				
2-49			Q1	Q2	Q3	Q4				
2-50			Q1	Q2	Q3	Q4				
2-51			Q1	Q2	Q3	Q4				
2-52			Q1	Q2	Q3	Q4				
2-53			Q1	Q2	Q3	Q4				
2-54			Q1	Q2	Q3	Q4				
2-55			Q1	Q2	Q3	Q4				
2-56			Q1	Q2	Q3	Q4				
2-57			Q1	Q2	Q3	Q4				
2-58			Q1	Q2	Q3	Q4				
2-59			Q1	Q2	Q3	Q4				
2-60			Q1	Q2	Q3	Q4				
2-61			Q1	Q2	Q3	Q4				
2-62			Q1	Q2	Q3	Q4				
2-63			Q1	Q2	Q3	Q4				
2-64			Q1	Q2	Q3	Q4				
2-65			Q1	Q2	Q3	Q4				
2-66			Q1	Q2	Q3	Q4				
2-67			Q1	Q2	Q3	Q4				
2-68			Q1	Q2	Q3	Q4				
2-69			Q1	Q2	Q3	Q4				
2-70			Q1	Q2	Q3	Q4				
2-71			Q1	Q2	Q3	Q4				
2-72			Q1	Q2	Q3	Q4				
2-73			Q1	Q2	Q3	Q4				
2-74			Q1	Q2	Q3	Q4				
2-75			Q1	Q2	Q3	Q4				
2-76			Q1	Q2	Q3	Q4				
2-77			Q1	Q2	Q3	Q4				
2-78			Q1	Q2	Q3	Q4				
2-79			Q1	Q2	Q3	Q4				
2-80			Q1	Q2	Q3	Q4				
2-81			Q1	Q2	Q3	Q4				
2-82			Q1	Q2	Q3	Q4				
2-83			Q1	Q2	Q3	Q4				
2-84			Q1	Q2	Q3	Q4				
2-85			Q1	Q2	Q3	Q4				
2-86			Q1	Q2	Q3	Q4				
2-87			Q1	Q2	Q3	Q4				
2-88			Q1	Q2	Q3	Q4				
2-89			Q1	Q2	Q3	Q4				
2-90			Q1	Q2	Q3	Q4				
2-91			Q1	Q2	Q3	Q4				
2-92			Q1	Q2	Q3	Q4				
2-93			Q1	Q2	Q3	Q4				
2-94			Q1	Q2	Q3	Q4				
2-95			Q1	Q2	Q3	Q4				
2-96			Q1	Q2	Q3	Q4				
2-97			Q1	Q2	Q3	Q4				
2-98			Q1	Q2	Q3	Q4				
2-99			Q1	Q2	Q3	Q4				
2-00			Q1	Q2	Q3	Q4				
2-01			Q1	Q2	Q3	Q4				
2-02			Q1	Q2	Q3	Q4				
2-03			Q1	Q2	Q3	Q4				
2-04			Q1	Q2	Q3	Q4				
2-05			Q1	Q2	Q3	Q4				
2-06			Q1	Q2	Q3	Q4				
2-07			Q1	Q2	Q3	Q4				
2-08			Q1	Q2	Q3	Q4				
2-09			Q1	Q2	Q3	Q4				
2-10			Q1	Q2	Q3	Q4				
2-11			Q1	Q2	Q3	Q4				
2-12			Q1	Q2	Q3	Q4				
2-13			Q1	Q2	Q3	Q4				
2-14			Q1	Q2	Q3	Q4				
2-15			Q1	Q2	Q3	Q4				
2-16			Q1	Q2	Q3	Q4				
2-17			Q1	Q2	Q3	Q4				
2-18			Q1	Q2	Q3	Q4				
2-19			Q1	Q2	Q3	Q4				
2-20			Q1	Q2	Q3	Q4				
2-21			Q1	Q2	Q3	Q4				
2-22			Q1	Q2	Q3	Q4				
2-23			Q1	Q2	Q3	Q4				
2-24			Q1	Q2	Q3	Q4				
2-25			Q1	Q2	Q3	Q4				
2-26			Q1	Q2	Q3	Q4				
2-27			Q1	Q2	Q3	Q4				
2-28			Q1	Q2	Q3	Q4				
2-29			Q1	Q2	Q3	Q4				
2-30			Q1	Q2	Q3	Q4				
2-31			Q1	Q2	Q3	Q4				
2-32			Q1	Q2	Q3	Q4				
2-33			Q1	Q2	Q3	Q4				
2-34			Q1	Q2	Q3	Q4				
2-35			Q1	Q2	Q3	Q4				
2-36			Q1	Q2	Q3	Q4				
2-37			Q1	Q2	Q3	Q4				
2-38			Q1	Q2	Q3	Q4				
2-39			Q1	Q2	Q3	Q4				
2-40			Q1	Q2	Q3	Q4				
2-41			Q1	Q2	Q3	Q4				
2-42			Q1	Q2	Q3	Q4				
2-43			Q1	Q2	Q3	Q4				
2-44			Q1	Q2	Q3	Q4				
2-45			Q1	Q2	Q3	Q4				
2-46			Q1	Q2	Q3	Q4				
2-47			Q1	Q2	Q3	Q4				
2-48			Q1	Q2	Q3	Q4				
2-49			Q1	Q2	Q3	Q4				
2-50			Q1	Q2	Q3	Q4				
2-51			Q1	Q2	Q3	Q4				
2-52			Q1	Q2	Q3	Q4				
2-53			Q1	Q2	Q3	Q4				
2-54			Q1	Q2	Q3	Q4				
2-55			Q1	Q2	Q3	Q4				
2-56			Q1	Q2	Q3	Q4				
2-57			Q1	Q2	Q3	Q4				
2-58			Q1	Q2	Q3	Q4				
2-59			Q1	Q2	Q3	Q4				
2-60			Q1	Q2	Q3	Q4				
2-61			Q1	Q2	Q3	Q4				
2-62			Q1	Q2	Q3	Q4				
2-63			Q1	Q2	Q3	Q4				
2-64			Q1	Q2	Q3	Q4				
2-65			Q1	Q2	Q3	Q4				
2-66			Q1	Q2	Q3	Q4				
2-67			Q1	Q2	Q3	Q4				
2-68			Q1	Q2	Q3	Q4				
2-69			Q1	Q2	Q3	Q4				
2-70			Q1	Q2	Q3	Q4				
2-71			Q1	Q2	Q3	Q4				
2-72			Q1	Q2	Q3	Q4				
2-73			Q1	Q2	Q3	Q4				
2-74			Q1	Q2	Q3	Q4				
2-75			Q1	Q2	Q3	Q4				
2-76			Q1	Q2	Q3	Q4				
2-77			Q1	Q2	Q3	Q4				
2-78			Q1	Q2	Q3	Q4				
2-79			Q1	Q2	Q3	Q4				
2-80			Q1	Q2	Q3	Q4				
2-81			Q1	Q2	Q3	Q4				
2-82			Q1	Q2	Q3	Q4				
2-83			Q1	Q2	Q3	Q4				
2-84			Q1	Q2	Q3	Q4				
2-85			Q1	Q2	Q3	Q4				
2-86			Q1	Q2	Q3	Q4				
2-87			Q1	Q2	Q3	Q4				
2-88			Q1	Q2	Q3	Q4				
2-89			Q1	Q2	Q3	Q4				
2-90			Q1	Q2	Q3	Q4				
2-91			Q1	Q2	Q3	Q4				
2-92			Q1	Q2	Q3	Q4				
2-93			Q1	Q2	Q3	Q4				
2-94			Q1	Q2	Q3	Q4				
2-95			Q1	Q2	Q3	Q4				
2-96			Q1	Q2	Q3	Q4				
2-97			Q1	Q2	Q3	Q4				
2-98			Q1	Q2	Q3	Q4				
2-99			Q1	Q2	Q3	Q4				
2-00			Q1	Q2	Q3	Q4				
2-01			Q1	Q2	Q3	Q4				
2-02			Q1	Q2	Q3	Q4				
2-03			Q1	Q2	Q3	Q4				
2-04			Q1	Q2	Q3	Q4				
2-05			Q1	Q2	Q3	Q4				
2-06			Q1	Q2	Q3	Q4				
2-07			Q1	Q2	Q3	Q4				
2-08			Q1	Q2	Q3	Q4				
2-09			Q1	Q2	Q3	Q4				
2-10			Q1	Q2	Q3	Q4				
2-11			Q1	Q2	Q3	Q4				
2-12			Q1	Q2	Q3					