



**REVIEW BY FORT BEND COUNTY  
COMMISSIONERS COURT**

**Fort Bend County  
Engineering Department**  
301 Jackson Suite 401  
Richmond, Texas 77469  
281.633.7500  
Permits@fortbendcountytexas.gov

☒ Right of Way Permit  
☐ Commercial Driveway Permit

Permit No: 2017-14385

**Applicant:** CenterPoint Energy

**Job Location Site:** 1833 Williams Way Boulevard, Richmond, TX 77469

**Bond No.** 00-000-117 **Date of Bond:** 4/28/1988 **Amount:** \$50,000.00

The above applicant came to make use of certain Fort Bend County property subject to, "The Order Regulating the Laying, Construction, Maintenance, and Repair of Buried Cables, Conduits, and Pole Lines, In, Under, Across or Along Roads, Streets, Highways, and Drainage Ditches in Fort Bend County, Texas, Under the Jurisdiction of the Commissioners Court of Fort Bend County, Texas," as passed by the Commissioners Court of Fort Bend County, Texas, of the Minutes of the Commissioners Court of Fort Bend County, Texas, to the extent that such order is not inconsistent with Chapter 181, Vernon's Texas Statutes and Codes Annotated.

**Notes:**

1. Evidence of review by the Commissioners Court must be kept on the job site and failure to do so constitutes grounds for job shutdown.
2. Written notices are required:
  - a. 48 hours in advance of construction start up, and
  - b. When construction is completed and ready for final inspection, submit notification to Permit Administrator thru MyGovernmentOnline.org portal.
3. This permit expires one (1) year from date of permit if construction has not commenced.

On this 27th day of June, 2017, Upon Motion of Commissioner Morales, seconded by Commissioner Protagi, duly put and carried, it is ORDERED, ADJUDGED AND DECREED that said notice of said above purpose is hereby acknowledged by the Commissioners Court of Fort Bend County, Texas, and that said notice be placed on record according to the regulation order thereof.

**Signature**

Presented to Commissioners Court and approved.

By: Charles O. Ay  
County Engineer

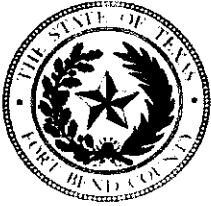
Date Recorded 7-5-2017 Comm. Court No. 14B

N/A

Clerk of Commissioners Court

By: \_\_\_\_\_  
Drainage District Engineer/Manager

By: Arinda Wilkins  
Deputy



**PERMIT APPLICATION REVIEW FORM FOR  
CABLE, CONDUIT, AND POLE LINE ACTIVITY  
IN FORT BEND COUNTY**

**Fort Bend County  
Engineering Department**  
301 Jackson Suite 401  
Richmond, Texas 77469  
281.633.7500  
Permits@fortbendcountytexas.gov

- ☒ Right of Way Permit  
☐ Commercial Driveway Permit

Permit No: 2017-14385

The following "Notice of Proposed Cable, Conduit, and/or Pole Line activity in Fort Bend County" and accompanying attachments have been reviewed and the notice conforms to appropriate regulations set by Commissioner's Court of Fort Bend County, Texas.

**(1) COMPLETE APPLICATION FORM:**

- ☒ a. Name of road, street, and/or drainage ditch affected.  
☒ b. Vicinity map showing course of directions  
☒ c. Plans and specifications

**(2) BOND:**

- ☐ County Attorney, approval when applicable.
- ☒ Perpetual bond currently posted.      Bond No: [REDACTED]      Amount: \$50,000.00
- ☐ Performance bond submitted.      Bond No: \_\_\_\_\_      Amount: \_\_\_\_\_
- ☐ Cashier's Check      Check No: \_\_\_\_\_      Amount: \_\_\_\_\_

**(3) DRAINAGE DISTRICT APPROVAL (WHEN APPLICABLE):**

\_\_\_\_\_  
Drainage District Approval

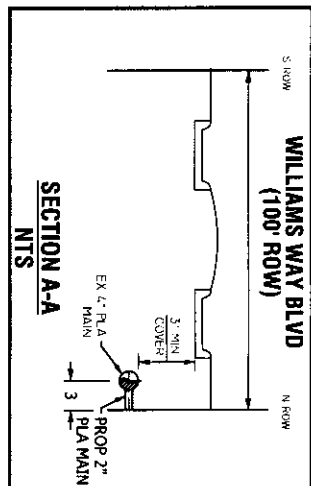
\_\_\_\_\_  
Date

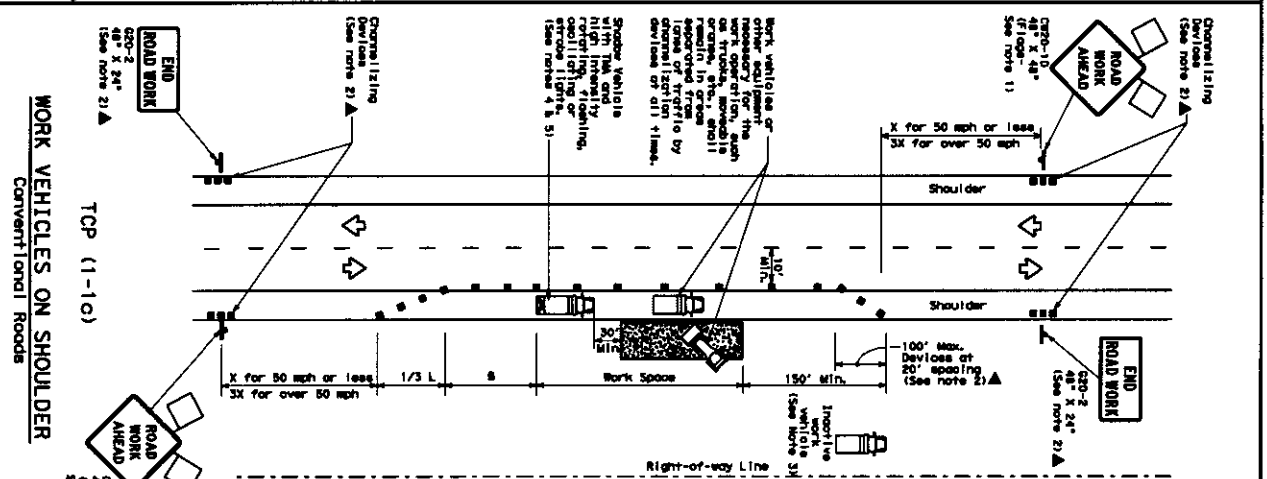
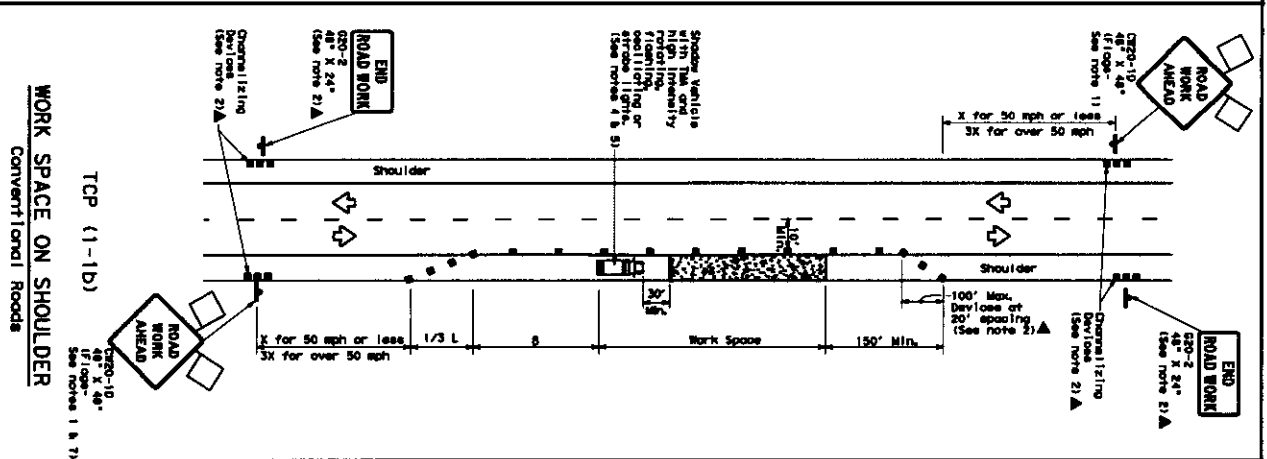
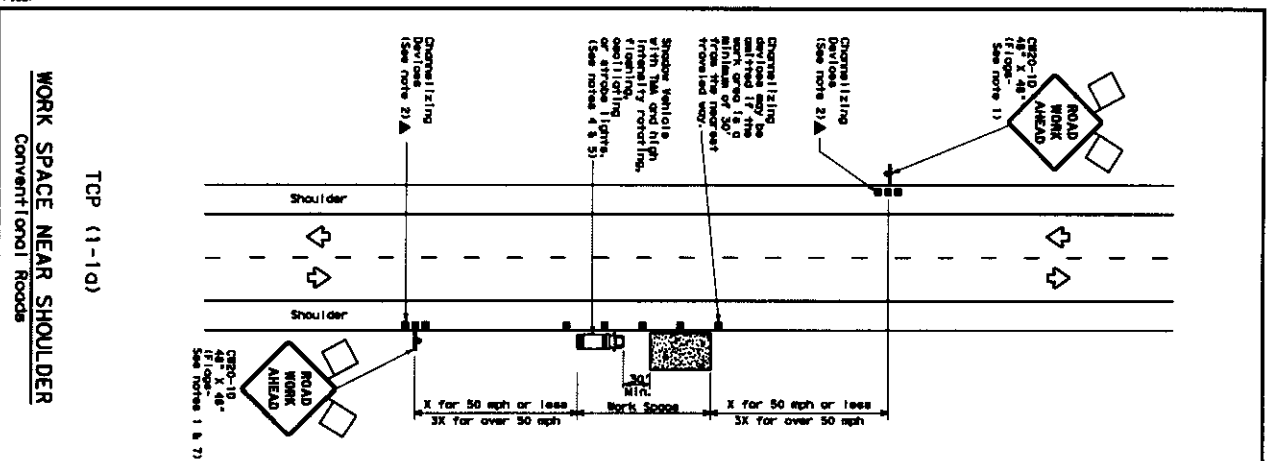
**We have reviewed this project and agree it meets minimum requirements.**

*Charles O. Al*

Permit Administrator

*6/19/17*  
Date





LEGEND	
	Type 3 barricade
	Heavy duty vehicle
	Trailer mounted board
	Flag
	Channelizing device
	Traffic board
	Advance warning (AAS)
	Portable channelizing device (PCD)
	Traffic flow
	Flag

Feedlot Number	Animal Formulation	10 <sup>1</sup> 10 <sup>2</sup> 10 <sup>3</sup>	10 <sup>4</sup> 10 <sup>5</sup> 10 <sup>6</sup>	10 <sup>7</sup> 10 <sup>8</sup> 10 <sup>9</sup>	10 <sup>10</sup> 10 <sup>11</sup> 10 <sup>12</sup>	10 <sup>13</sup> 10 <sup>14</sup> 10 <sup>15</sup>	10 <sup>16</sup> 10 <sup>17</sup> 10 <sup>18</sup>	10 <sup>19</sup> 10 <sup>20</sup> 10 <sup>21</sup>	10 <sup>22</sup> 10 <sup>23</sup> 10 <sup>24</sup>	10 <sup>25</sup> 10 <sup>26</sup> 10 <sup>27</sup>	10 <sup>28</sup> 10 <sup>29</sup> 10 <sup>30</sup>	10 <sup>31</sup> 10 <sup>32</sup> 10 <sup>33</sup>	10 <sup>34</sup> 10 <sup>35</sup> 10 <sup>36</sup>	10 <sup>37</sup> 10 <sup>38</sup> 10 <sup>39</sup>	10 <sup>40</sup> 10 <sup>41</sup> 10 <sup>42</sup>	10 <sup>43</sup> 10 <sup>44</sup> 10 <sup>45</sup>	10 <sup>46</sup> 10 <sup>47</sup> 10 <sup>48</sup>	10 <sup>49</sup> 10 <sup>50</sup> 10 <sup>51</sup>	10 <sup>52</sup> 10 <sup>53</sup> 10 <sup>54</sup>	10 <sup>55</sup> 10 <sup>56</sup> 10 <sup>57</sup>	10 <sup>58</sup> 10 <sup>59</sup> 10 <sup>60</sup>	10 <sup>61</sup> 10 <sup>62</sup> 10 <sup>63</sup>	10 <sup>64</sup> 10 <sup>65</sup> 10 <sup>66</sup>	10 <sup>67</sup> 10 <sup>68</sup> 10 <sup>69</sup>	10 <sup>70</sup> 10 <sup>71</sup> 10 <sup>72</sup>	10 <sup>73</sup> 10 <sup>74</sup> 10 <sup>75</sup>	10 <sup>76</sup> 10 <sup>77</sup> 10 <sup>78</sup>	10 <sup>79</sup> 10 <sup>80</sup> 10 <sup>81</sup>	10 <sup>82</sup> 10 <sup>83</sup> 10 <sup>84</sup>	10 <sup>85</sup> 10 <sup>86</sup> 10 <sup>87</sup>	10 <sup>88</sup> 10 <sup>89</sup> 10 <sup>90</sup>	10 <sup>91</sup> 10 <sup>92</sup> 10 <sup>93</sup>	10 <sup>94</sup> 10 <sup>95</sup> 10 <sup>96</sup>	10 <sup>97</sup> 10 <sup>98</sup> 10 <sup>99</sup>	10 <sup>100</sup> 10 <sup>101</sup> 10 <sup>102</sup>	10 <sup>103</sup> 10 <sup>104</sup> 10 <sup>105</sup>	10 <sup>106</sup> 10 <sup>107</sup> 10 <sup>108</sup>	10 <sup>109</sup> 10 <sup>110</sup> 10 <sup>111</sup>	10 <sup>112</sup> 10 <sup>113</sup> 10 <sup>114</sup>	10 <sup>115</sup> 10 <sup>116</sup> 10 <sup>117</sup>	10 <sup>118</sup> 10 <sup>119</sup> 10 <sup>120</sup>	10 <sup>121</sup> 10 <sup>122</sup> 10 <sup>123</sup>	10 <sup>124</sup> 10 <sup>125</sup> 10 <sup>126</sup>	10 <sup>127</sup> 10 <sup>128</sup> 10 <sup>129</sup>	10 <sup>130</sup> 10 <sup>131</sup> 10 <sup>132</sup>	10 <sup>133</sup> 10 <sup>134</sup> 10 <sup>135</sup>	10 <sup>136</sup> 10 <sup>137</sup> 10 <sup>138</sup>	10 <sup>139</sup> 10 <sup>140</sup> 10 <sup>141</sup>	10 <sup>142</sup> 10 <sup>143</sup> 10 <sup>144</sup>	10 <sup>145</sup> 10 <sup>146</sup> 10 <sup>147</sup>	10 <sup>148</sup> 10 <sup>149</sup> 10 <sup>150</sup>	10 <sup>151</sup> 10 <sup>152</sup> 10 <sup>153</sup>	10 <sup>154</sup> 10 <sup>155</sup> 10 <sup>156</sup>	10 <sup>157</sup> 10 <sup>158</sup> 10 <sup>159</sup>	10 <sup>160</sup> 10 <sup>161</sup> 10 <sup>162</sup>	10 <sup>163</sup> 10 <sup>164</sup> 10 <sup>165</sup>	10 <sup>166</sup> 10 <sup>167</sup> 10 <sup>168</sup>	10 <sup>169</sup> 10 <sup>170</sup> 10 <sup>171</sup>	10 <sup>172</sup> 10 <sup>173</sup> 10 <sup>174</sup>	10 <sup>175</sup> 10 <sup>176</sup> 10 <sup>177</sup>	10 <sup>178</sup> 10 <sup>179</sup> 10 <sup>180</sup>	10 <sup>181</sup> 10 <sup>182</sup> 10 <sup>183</sup>	10 <sup>184</sup> 10 <sup>185</sup> 10 <sup>186</sup>	10 <sup>187</sup> 10 <sup>188</sup> 10 <sup>189</sup>	10 <sup>190</sup> 10 <sup>191</sup> 10 <sup>192</sup>	10 <sup>193</sup> 10 <sup>194</sup> 10 <sup>195</sup>	10 <sup>196</sup> 10 <sup>197</sup> 10 <sup>198</sup>	10 <sup>199</sup> 10 <sup>200</sup> 10 <sup>201</sup>	10 <sup>202</sup> 10 <sup>203</sup> 10 <sup>204</sup>	10 <sup>205</sup> 10 <sup>206</sup> 10 <sup>207</sup>	10 <sup>208</sup> 10 <sup>209</sup> 10 <sup>210</sup>	10 <sup>211</sup> 10 <sup>212</sup> 10 <sup>213</sup>	10 <sup>214</sup> 10 <sup>215</sup> 10 <sup>216</sup>	10 <sup>217</sup> 10 <sup>218</sup> 10 <sup>219</sup>	10 <sup>220</sup> 10 <sup>221</sup> 10 <sup>222</sup>	10 <sup>223</sup> 10 <sup>224</sup> 10 <sup>225</sup>	10 <sup>226</sup> 10 <sup>227</sup> 10 <sup>228</sup>	10 <sup>229</sup> 10 <sup>230</sup> 10 <sup>231</sup>	10 <sup>232</sup> 10 <sup>233</sup> 10 <sup>234</sup>	10 <sup>235</sup> 10 <sup>236</sup> 10 <sup>237</sup>	10 <sup>238</sup> 10 <sup>239</sup> 10 <sup>240</sup>	10 <sup>241</sup> 10 <sup>242</sup> 10 <sup>243</sup>	10 <sup>244</sup> 10 <sup>245</sup> 10 <sup>246</sup>	10 <sup>247</sup> 10 <sup>248</sup> 10 <sup>249</sup>	10 <sup>250</sup> 10 <sup>251</sup> 10 <sup>252</sup>	10 <sup>253</sup> 10 <sup>254</sup> 10 <sup>255</sup>	10 <sup>256</sup> 10 <sup>257</sup> 10 <sup>258</sup>	10 <sup>259</sup> 10 <sup>260</sup> 10 <sup>261</sup>	10 <sup>262</sup> 10 <sup>263</sup> 10 <sup>264</sup>	10 <sup>265</sup> 10 <sup>266</sup> 10 <sup>267</sup>	10 <sup>268</sup> 10 <sup>269</sup> 10 <sup>270</sup>	10 <sup>271</sup> 10 <sup>272</sup> 10 <sup>273</sup>	10 <sup>274</sup> 10 <sup>275</sup> 10 <sup>276</sup>	10 <sup>277</sup> 10 <sup>278</sup> 10 <sup>279</sup>	10 <sup>280</sup> 10 <sup>281</sup> 10 <sup>282</sup>	10 <sup>283</sup> 10 <sup>284</sup> 10 <sup>285</sup>	10 <sup>286</sup> 10 <sup>287</sup> 10 <sup>288</sup>	10 <sup>289</sup> 10 <sup>290</sup> 10 <sup>291</sup>	10 <sup>292</sup> 10 <sup>293</sup> 10 <sup>294</sup>	10 <sup>295</sup> 10 <sup>296</sup> 10 <sup>297</sup>	10 <sup>298</sup> 10 <sup>299</sup> 10 <sup>300</sup>	10 <sup>301</sup> 10 <sup>302</sup> 10 <sup>303</sup>	10 <sup>304</sup> 10 <sup>305</sup> 10<
-------------------	-----------------------	---	---	---	--	--	--	--	--	--	--	--	--	--	--	--	--	--	--	--	--	--	--	--	--	--	--	--	--	--	--	--	--	--	---	---	---	---	---	---	---	---	---	---	---	---	---	---	---	---	---	---	---	---	---	---	---	---	---	---	---	---	---	---	---	---	---	---	---	---	---	---	---	---	---	---	---	---	---	---	---	---	---	---	---	---	---	---	---	---	---	---	---	---	---	---	---	---	---	---	---	---	---

Kit Taper lengths have been

FOUNDED 1971.  
 MILLERS OF OCEANOGRAPHY: 5-Block Road, N. Miami

TYPICAL USAGE			
	SHORT DURATION	SHORT TERM STATIONARY	INTERMEDIATE TERM STATIONARY
MOBILE	✓	✓	

## GENERAL NOTES

1. All parts referred to signs where signs are REQUIRED.
2. All traffic control devices illustrated are REQUIRED, except those indicated by the following symbols and defined when applied to the signs, or for adding instructions, or as approved by the Engineer.
3. Inside-work vehicles are not permitted to be parked near the shoulder.
4. Right-of-way lines are not permitted to be painted or postmarked.
5. 30 to 100 feet in advance of the area of care necessary without otherwise affecting the performance or quality of the work. If workers are no longer present but road or work conditions require the traffic control to remain in place, the Engineer or other authorized personnel may remove the signs.
6. Additional slower vehicles with this sign may be positioned off the posted shoulder, near to those signs in order to prevent other work spaces.
7. See TYPED-1 SLOWING WORK sign on divided highways, interchange and other work areas.
8. TYPED-2 SLOWING WORK sign may be used in place of TYPED-1.
9. ROAD WORK AHEAD sign for shoulder work on conventional

For construction or maintenance contract work, special project requirements for access vehicles can be found in the project GENERAL NOTES for Item 502, Barriadees, Signs and Traffic Handling.

**Texas Department of Transportation**  
*Traffic Operations Division*

**TRAFFIC CONTROL PLAN**  
**CONVENTIONAL ROAD**  
**SHOULDER WORK**

TCP(1-1)-12					
① 1207 December 1965 REF ID: A68396					
2-246		see TROST	DATA TROST	See TROST	CAL. TROST
6-40		EMIT	RECI	add	WILSON
1-87					
4-96		B/S/T		PROPERTY	WELCH, JR.
151					