



**REVIEW BY FORT BEND COUNTY
COMMISSIONERS COURT**

**Fort Bend County
Engineering Department**
301 Jackson Suite 401
Richmond, Texas 77469
281.633.7500
Permits@fortbendcountytexas.gov



Right of Way Permit



Commercial Driveway Permit

Permit No: 2017-13946

Applicant: CenterPoint Energy

Job Location Site: 6355 S Peek Road, Richmond, TX 77407

Bond No: [REDACTED] **Date of Bond:** 4/28/1988 **Amount:** \$50,000.00

The above applicant came to make use of certain Fort Bend County property subject to, "The Order Regulating the Laying, Construction, Maintenance, and Repair of Buried Cables, Conduits, and Pole Lines, In, Under, Across or Along Roads, Streets, Highways, and Drainage Ditches in Fort Bend County, Texas, Under the Jurisdiction of the Commissioners Court of Fort Bend County, Texas," as passed by the Commissioners Court of Fort Bend County, Texas, of the Minutes of the Commissioners Court of Fort Bend County, Texas, to the extent that such order is not inconsistent with Chapter 181, Vernon's Texas Statutes and Codes Annotated.

Notes:

1. Evidence of review by the Commissioners Court must be kept on the job site and failure to do so constitutes grounds for job shutdown.
2. Written notices are required:
 - a. 48 hours in advance of construction start up, and
 - b. When construction is completed and ready for final inspection, submit notification to Permit Administrator thru MyGovernmentOnline.org portal.
3. This permit expires one (1) year from date of permit if construction has not commenced.

On this 6th day of June, 2017, Upon Motion of Commissioner Morales, seconded by Commissioner Meyers, duly put and carried, it is ORDERED, ADJUDGED AND DECREED that said notice of said above purpose is hereby acknowledged by the Commissioners Court of Fort Bend County, Texas, and that said notice be placed on record according to the regulation order thereof.

Signature

Presented to Commissioners Court and approved.

By: Charles O. Ay
County Engineer

Date Recorded 6-9-2017 Comm. Court No. 13E

N/A

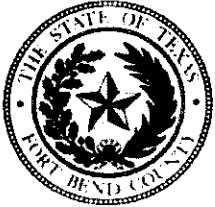
Clerk of Commissioners Court

By:

Drainage District Engineer/Manager

By:

Deputy



**PERMIT APPLICATION REVIEW FORM FOR
CABLE, CONDUIT, AND POLE LINE ACTIVITY
IN FORT BEND COUNTY**

**Fort Bend County
Engineering Department**
301 Jackson Suite 401
Richmond, Texas 77469
281.633.7500
Permits@fortbendcountytexas.gov

- ☒ Right of Way Permit
☐ Commercial Driveway Permit

Permit No: 2017-13946

The following "Notice of Proposed Cable, Conduit, and/or Pole Line activity in Fort Bend County" and accompanying attachments have been reviewed and the notice conforms to appropriate regulations set by Commissioner's Court of Fort Bend County, Texas.

(1) COMPLETE APPLICATION FORM:

- ☒ a. Name of road, street, and/or drainage ditch affected.
☒ b. Vicinity map showing course of directions
☒ c. Plans and specifications

(2) BOND:

- ☐ County Attorney, approval when applicable.
- ☒ Perpetual bond currently posted. Bond No: [REDACTED] Amount: \$50,000.00
- ☐ Performance bond submitted. Bond No: _____ Amount: _____
- ☐ Cashier's Check Check No: _____ Amount: _____

(3) DRAINAGE DISTRICT APPROVAL (WHEN APPLICABLE):

Drainage District Approval

Date

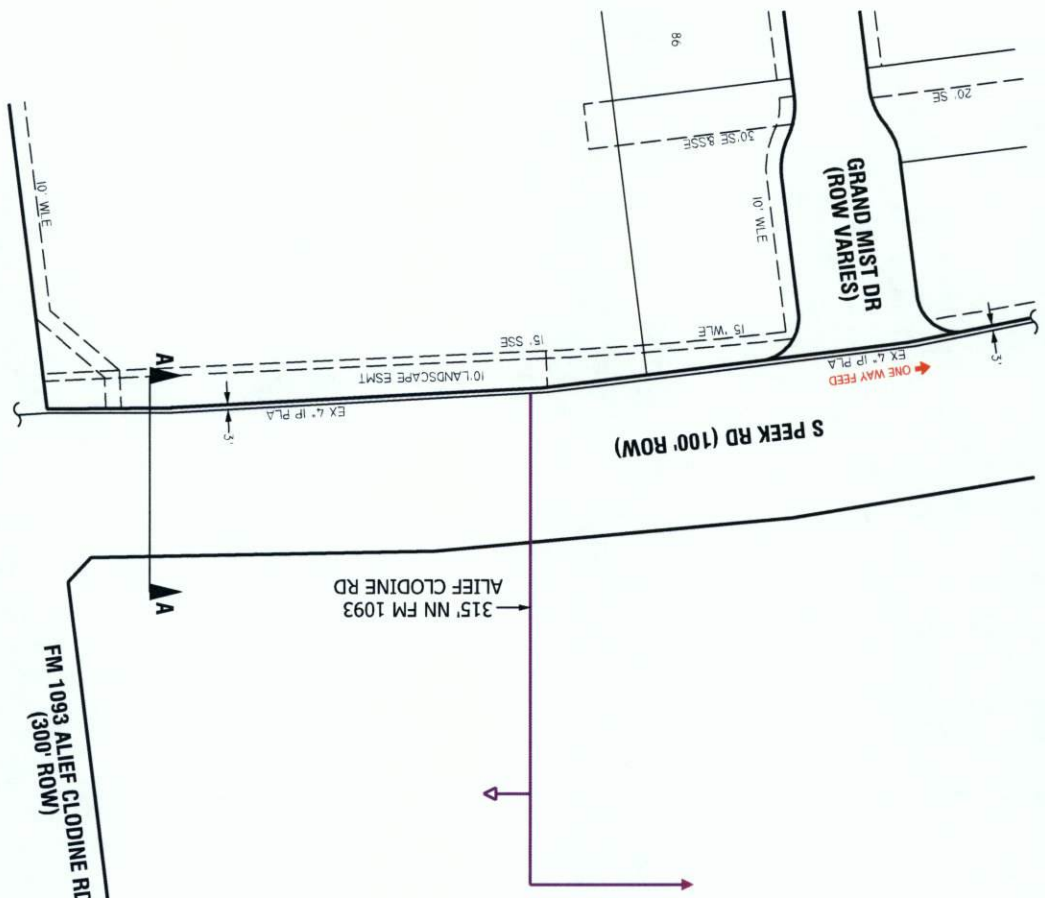
We have reviewed this project and agree it meets minimum requirements.

Chunby O. Al

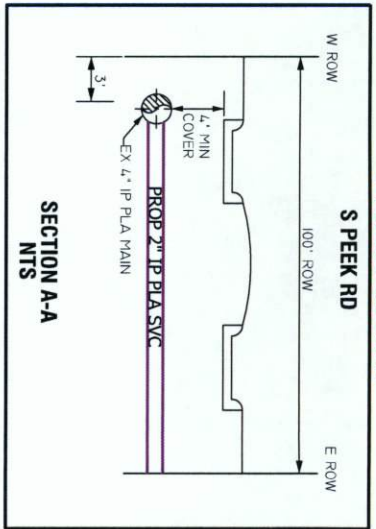
Permit Administrator

5/24/17

Date



DESIGNED BY: VICTORIA PHAM	DATE: 05/10/2017	SCALE: 1/8\"/>
CHECKED BY: VICTORIA PHAM	DATE: 05/10/2017	SCALE: 1/8\"/>
APPROVED BY: VICTORIA PHAM	DATE: 05/10/2017	SCALE: 1/8\"/>
CONTRIBUTION #		
APPROVED AND NECESSARY TO SERVE CONFORMANCE TO THE TEXAS CONSTRUCTION ACT		



- GENERAL NOTES:
1. MAINTAIN MIN DEPTH OF 3' UNLESS OTHERWISE SPECIFIED
 2. FIELD LOCATE AND VERIFY ALL EXISTING FEEDS, MAINS AND SERVICES
 3. USE GAUGES TO MONITOR AND MAINTAIN FEEDS AND PRESSURE
 4. TEST PRESSURE AT 100 PSIG IN ACCORDANCE WITH SECTION CS-B-1.2220 OF THE CONSTRUCTION & SERVICE MANUAL
 5. COORDINATE SERVICE LOCATION WITH VERONICA SPILLER 281-561-6012

LEGEND AND NOTES

EXISTING MAIN

PROP 2\"/>

PE 2406/2708

WO#: 82008439

PROP 2\"/>

PE 2406/2708

WO#: 82008738

TEST PRESSURE 100 PSIG

NOTIFICATION#: 1404166149

GENERAL NOTES:

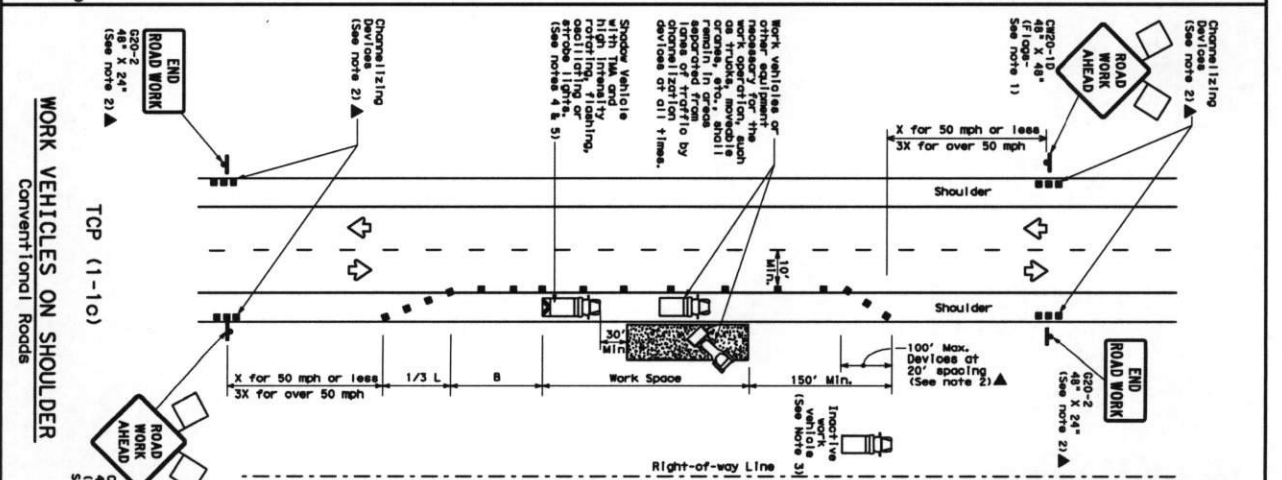
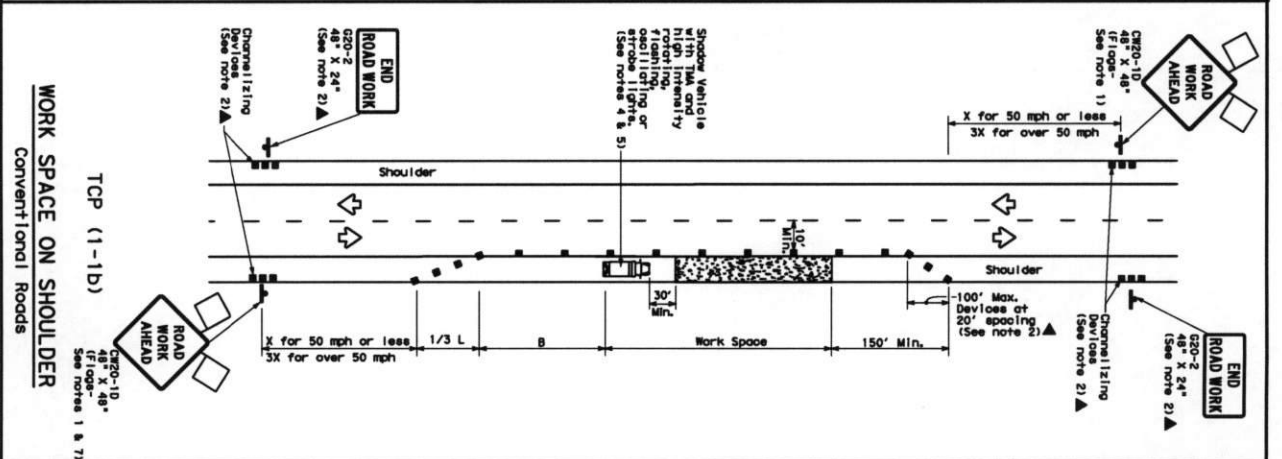
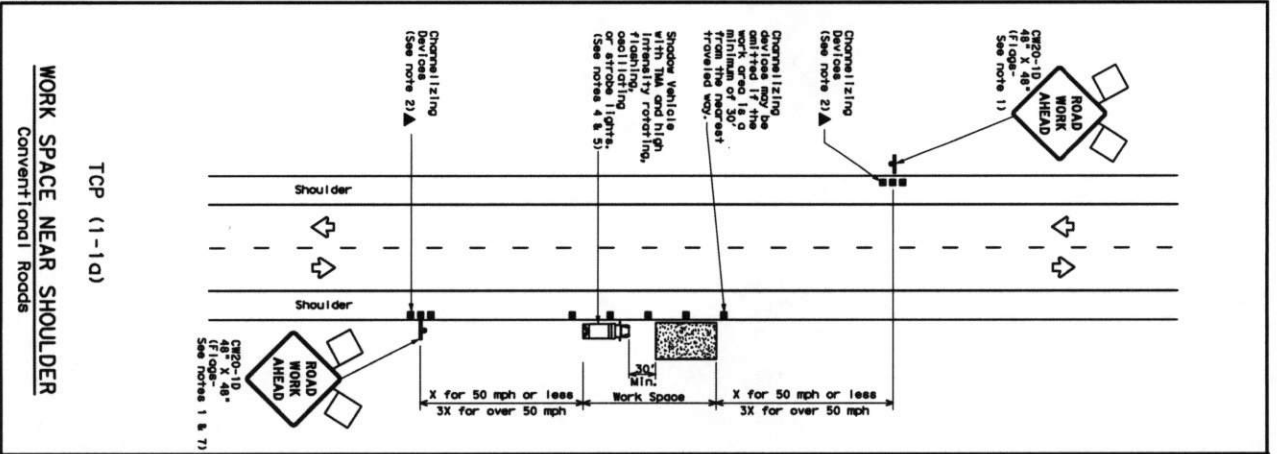
1. USE 1\"/>
2. USE 1\"/>
3. USE 1\"/>
4. USE 1\"/>
5. USE 1\"/>

6355 S PEEK &
21690 FM 1093
FT BEND COUNTY, TX

CenterPoint
Energy
FTB-17538

DISCLAIMER: The use of this standard is governed by the "Texas Engineering Practice Act". No warranty of any kind is made by TxDOT for any purpose whatsoever. TxDOT assumes no responsibility for the conversion of this standard to other formats or for incorrect results or damage resulting from its use.

DATE: FILE:



LEGEND

Symbol	Description
Channelizing Device	Channelizing Device
Tractor Mounted Attenuator (TMA)	Tractor Mounted Attenuator (TMA)
Tractor Mounted Attenuator (TMA) with Arrow Board	Tractor Mounted Attenuator (TMA) with Arrow Board
Tractor Mounted Attenuator (TMA) with Arrow Board and Flashing Arrow Board	Tractor Mounted Attenuator (TMA) with Arrow Board and Flashing Arrow Board
Sign	Sign
Flag	Flag
Flagger	Flagger

Typical Usage

MOBILE	SHORT DURATION	SHORT TERM STATIONARY	INTERMEDIATE TERM STATIONARY	LONG TERM STATIONARY
1	2	3	4	5
6	7	8	9	10
11	12	13	14	15
16	17	18	19	20
21	22	23	24	25
26	27	28	29	30
31	32	33	34	35
36	37	38	39	40
41	42	43	44	45
46	47	48	49	50
51	52	53	54	55
56	57	58	59	60
61	62	63	64	65
66	67	68	69	70
71	72	73	74	75

GENERAL NOTES

1. Flagger stationed at a sign where alone are required.
2. Flagger stationed at a sign where alone are required.
3. Flagger stationed at a sign where alone are required.
4. Flagger stationed at a sign where alone are required.
5. Flagger stationed at a sign where alone are required.
6. Flagger stationed at a sign where alone are required.
7. Flagger stationed at a sign where alone are required.
8. Flagger stationed at a sign where alone are required.
9. Flagger stationed at a sign where alone are required.
10. Flagger stationed at a sign where alone are required.
11. Flagger stationed at a sign where alone are required.
12. Flagger stationed at a sign where alone are required.
13. Flagger stationed at a sign where alone are required.
14. Flagger stationed at a sign where alone are required.
15. Flagger stationed at a sign where alone are required.
16. Flagger stationed at a sign where alone are required.
17. Flagger stationed at a sign where alone are required.
18. Flagger stationed at a sign where alone are required.
19. Flagger stationed at a sign where alone are required.
20. Flagger stationed at a sign where alone are required.
21. Flagger stationed at a sign where alone are required.
22. Flagger stationed at a sign where alone are required.
23. Flagger stationed at a sign where alone are required.
24. Flagger stationed at a sign where alone are required.
25. Flagger stationed at a sign where alone are required.
26. Flagger stationed at a sign where alone are required.
27. Flagger stationed at a sign where alone are required.
28. Flagger stationed at a sign where alone are required.
29. Flagger stationed at a sign where alone are required.
30. Flagger stationed at a sign where alone are required.
31. Flagger stationed at a sign where alone are required.
32. Flagger stationed at a sign where alone are required.
33. Flagger stationed at a sign where alone are required.
34. Flagger stationed at a sign where alone are required.
35. Flagger stationed at a sign where alone are required.
36. Flagger stationed at a sign where alone are required.
37. Flagger stationed at a sign where alone are required.
38. Flagger stationed at a sign where alone are required.
39. Flagger stationed at a sign where alone are required.
40. Flagger stationed at a sign where alone are required.
41. Flagger stationed at a sign where alone are required.
42. Flagger stationed at a sign where alone are required.
43. Flagger stationed at a sign where alone are required.
44. Flagger stationed at a sign where alone are required.
45. Flagger stationed at a sign where alone are required.
46. Flagger stationed at a sign where alone are required.
47. Flagger stationed at a sign where alone are required.
48. Flagger stationed at a sign where alone are required.
49. Flagger stationed at a sign where alone are required.
50. Flagger stationed at a sign where alone are required.
51. Flagger stationed at a sign where alone are required.
52. Flagger stationed at a sign where alone are required.
53. Flagger stationed at a sign where alone are required.
54. Flagger stationed at a sign where alone are required.
55. Flagger stationed at a sign where alone are required.
56. Flagger stationed at a sign where alone are required.
57. Flagger stationed at a sign where alone are required.
58. Flagger stationed at a sign where alone are required.
59. Flagger stationed at a sign where alone are required.
60. Flagger stationed at a sign where alone are required.
61. Flagger stationed at a sign where alone are required.
62. Flagger stationed at a sign where alone are required.
63. Flagger stationed at a sign where alone are required.
64. Flagger stationed at a sign where alone are required.
65. Flagger stationed at a sign where alone are required.
66. Flagger stationed at a sign where alone are required.
67. Flagger stationed at a sign where alone are required.
68. Flagger stationed at a sign where alone are required.
69. Flagger stationed at a sign where alone are required.
70. Flagger stationed at a sign where alone are required.
71. Flagger stationed at a sign where alone are required.
72. Flagger stationed at a sign where alone are required.
73. Flagger stationed at a sign where alone are required.
74. Flagger stationed at a sign where alone are required.
75. Flagger stationed at a sign where alone are required.

Texas Department of Transportation
Traffic Operations Division

TRAFFIC CONTROL PLAN
CONVENTIONAL ROAD SHOULDER WORK

TCP (1-1) - 12

For construction or maintenance control work, specific project requirements for shoulder vehicles can be found in the project GENERAL NOTES for Item 502, "Shoulder Barrieroles, Signs and Traffic Handling."

DATE: 12/15/11
FILE: 12/15/11

DESIGNED BY: 12/15/11
CHECKED BY: 12/15/11
APPROVED BY: 12/15/11

PROJECT NO.: 12/15/11
SHEET NO.: 12/15/11