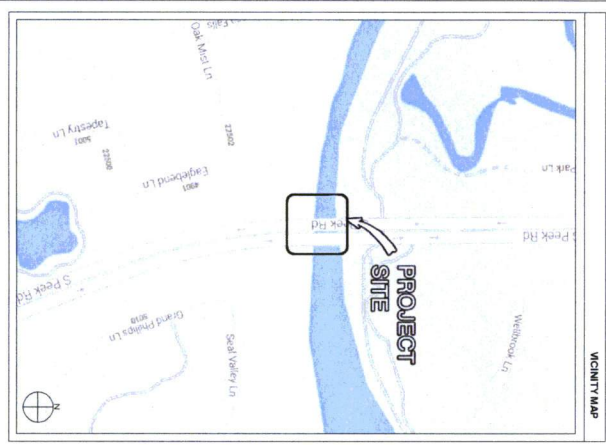




PROJECT NAME: VERIZON - CINCO RANCH
PROJECT ADDRESS: PEEK RD. & WILLOW FORK DRAINAGE DITCH
PROJECT TYPE: WOOD POWER POLE
HUB AREA: CINCO RANCH, TX
NODE #(s): CCR-002-01
COORDINATES: LAT: 29.722200, LONG: -95.767760



PROJECT TEAM	
ARCHITECT Company: SHIFT CONSULTING Address: 1500 KENNEDY BLVD Suite 100 Houston, TX 77057 Phone Number: 281.544.4833 Fax Number: 281.544.4833 Contact: BRUCE POTTER	STRUCTURAL Company: WOLF ENGINEERING, LLC Address: 1500 KENNEDY BLVD Suite 100 Houston, TX 77057 Phone Number: 281.544.4833 Fax Number: 281.544.4833 Contact: BRUCE POTTER
GENERAL CONTRACTOR Company: T&D Address: 200 KENNEDY BLVD, STE. 100 Houston, TX 77057 Phone Number: 281.544.4833 Fax Number: 281.544.4833 Contact: BRUCE POTTER	RF ENGINEER Company: SHOWN DATE Address: 1500 KENNEDY BLVD Suite 100 Houston, TX 77057 Phone Number: 281.544.4833 Fax Number: 281.544.4833 Contact: BRUCE POTTER
PROJECT MANAGER Company: CROWN CASTLE Address: 1500 KENNEDY BLVD Suite 100 Houston, TX 77057 Phone Number: 281.544.4833 Fax Number: 281.544.4833 Contact: BRUCE POTTER	

PROJECT SUMMARY	
PROJECT NAME VERIZON - CINCO RANCH	APPLICANT CROWN CASTLE 1500 KENNEDY BLVD SUITE 100 HOUSTON, TX 77057 CONTACT: BRUCE POTTER
PROJECT AREA CINCO RANCH, TX	CODES 2009 INTERNATIONAL BUILDING CODE (IBC) 2009 INTERNATIONAL ENERGY CONSERVATION CODE (IECC) 2009 NATIONAL ELECTRICAL CODE (NEC) 2009 NATIONAL ELECTRICAL SAFETY CODE (NESC)
DESCRIPTION PORT BOND COUNTY ENGINEERING DEPT. 1154 KILDEE RD. P.O. BOX 1471 P.O. BOX 1471 P.O. BOX 1471 CONTACT: JOHNNY ORTEGA	HANDICAPPED REQUIREMENTS FACILITY IS UNIMPAIRED AND NOT FOR HANDICAPPED ACCESS REQUIREMENTS ARE NOT REQUIRED.
LOADING REQUIREMENTS PROJECT TO BE CONFORMED TO PROJECT TO BE CONFORMED TO PROJECT TO BE CONFORMED TO	KEY MAP AREA 46 Y
POWER COMPANY CROWN CASTLE 1500 KENNEDY BLVD SUITE 100 HOUSTON, TX 77057 CONTACT: BRUCE POTTER	

Sheet #	T1.1 Sheet Index	Sheet Description	Page
T1.1		TITLE SHEET	1
T1.2		LIST OF REVISIONS AND SYMBOLS	2
T1.3		GENERAL SPECIFICATIONS	3
T1.4		SITE PLAN, EQUIPMENT AND ANTENNA PLAN	4
D1.1		CONSTRUCTION DETAILS	5
D1.2		CONSTRUCTION DETAILS	6
D1.3		CONSTRUCTION DETAILS	7
D1.4		CONSTRUCTION DETAILS	8

CROWN CASTLE
1500 KENNEDY BLVD
SUITE 100
HOUSTON, TX 77057
PH: 281.544.4833
FAX: 281.544.4833

SHIFT CONSULTING, LLC
1500 KENNEDY BLVD
SUITE 100
HOUSTON, TX 77057
PH: 281.544.4833
FAX: 281.544.4833

RECORD DRAWING ISSUE DATE: 4/17/2014

RECORD DRAWING DRAFTING ONLY

THE DRAWING IS COPYRIGHTED AND IS THE SOLE PROPERTY OF THE OWNER. IT IS TO BE USED ONLY FOR THE PROJECT AND NOT FOR ANY OTHER PURPOSE. NO PART OF THIS DRAWING IS TO BE REPRODUCED OR TRANSMITTED IN ANY FORM OR BY ANY MEANS, ELECTRONIC OR MECHANICAL, WITHOUT PERMISSION OF THE OWNER.

RELEASE
DATE: 5/20/2014
BY: 1158-13
CENTERPOINT SUBMITTAL
1-2-14

REVISIONS
NO. DATE REASON
1 5/15/14 REVISION 1
2 5/15/14 REVISION 2
3 5/15/14 REVISION 3
4 5/15/14 REVISION 4
5 5/15/14 REVISION 5
6 5/15/14 REVISION 6
7 5/15/14 REVISION 7
8 5/15/14 REVISION 8
9 5/15/14 REVISION 9
10 5/15/14 REVISION 10
11 5/15/14 REVISION 11
12 5/15/14 REVISION 12
13 5/15/14 REVISION 13
14 5/15/14 REVISION 14
15 5/15/14 REVISION 15
16 5/15/14 REVISION 16
17 5/15/14 REVISION 17
18 5/15/14 REVISION 18
19 5/15/14 REVISION 19
20 5/15/14 REVISION 20
21 5/15/14 REVISION 21
22 5/15/14 REVISION 22
23 5/15/14 REVISION 23
24 5/15/14 REVISION 24
25 5/15/14 REVISION 25
26 5/15/14 REVISION 26
27 5/15/14 REVISION 27
28 5/15/14 REVISION 28
29 5/15/14 REVISION 29
30 5/15/14 REVISION 30
31 5/15/14 REVISION 31
32 5/15/14 REVISION 32
33 5/15/14 REVISION 33
34 5/15/14 REVISION 34
35 5/15/14 REVISION 35
36 5/15/14 REVISION 36
37 5/15/14 REVISION 37
38 5/15/14 REVISION 38
39 5/15/14 REVISION 39
40 5/15/14 REVISION 40
41 5/15/14 REVISION 41
42 5/15/14 REVISION 42
43 5/15/14 REVISION 43
44 5/15/14 REVISION 44
45 5/15/14 REVISION 45
46 5/15/14 REVISION 46
47 5/15/14 REVISION 47
48 5/15/14 REVISION 48
49 5/15/14 REVISION 49
50 5/15/14 REVISION 50
51 5/15/14 REVISION 51
52 5/15/14 REVISION 52
53 5/15/14 REVISION 53
54 5/15/14 REVISION 54
55 5/15/14 REVISION 55
56 5/15/14 REVISION 56
57 5/15/14 REVISION 57
58 5/15/14 REVISION 58
59 5/15/14 REVISION 59
60 5/15/14 REVISION 60
61 5/15/14 REVISION 61
62 5/15/14 REVISION 62
63 5/15/14 REVISION 63
64 5/15/14 REVISION 64
65 5/15/14 REVISION 65
66 5/15/14 REVISION 66
67 5/15/14 REVISION 67
68 5/15/14 REVISION 68
69 5/15/14 REVISION 69
70 5/15/14 REVISION 70
71 5/15/14 REVISION 71
72 5/15/14 REVISION 72
73 5/15/14 REVISION 73
74 5/15/14 REVISION 74
75 5/15/14 REVISION 75
76 5/15/14 REVISION 76
77 5/15/14 REVISION 77
78 5/15/14 REVISION 78
79 5/15/14 REVISION 79
80 5/15/14 REVISION 80
81 5/15/14 REVISION 81
82 5/15/14 REVISION 82
83 5/15/14 REVISION 83
84 5/15/14 REVISION 84
85 5/15/14 REVISION 85
86 5/15/14 REVISION 86
87 5/15/14 REVISION 87
88 5/15/14 REVISION 88
89 5/15/14 REVISION 89
90 5/15/14 REVISION 90
91 5/15/14 REVISION 91
92 5/15/14 REVISION 92
93 5/15/14 REVISION 93
94 5/15/14 REVISION 94
95 5/15/14 REVISION 95
96 5/15/14 REVISION 96
97 5/15/14 REVISION 97
98 5/15/14 REVISION 98
99 5/15/14 REVISION 99
100 5/15/14 REVISION 100

PROJECT NAME: VERIZON - CINCO RANCH
NODE ADDRESS: NODE #CCR-002-01
HUB AREA: CINCO RANCH, TX
SHEET NUMBER: 120603
SHEET TITLE: TITLE SHEET
SHEET NUMBER: 1 OF 8
TITLE: T1.1
PROJECT SCALE: 1" = 24' (12' x 18' 11 1/2")

CASE #

- GENERAL PROJECT NOTES

SCALE: NTS	10
------------	----

SCALE: NT8

SHIFT JOB NUMBER	IN HOUSE
120603	DRAWN BY: RA CHECKED BY: CM
SHEET TITLE	
GENERAL NOTES ABBREVIATIONS AND SYMBOLS	
SHEET NUMBER	PAGE

PROJECT NAME
VERIZON - CINCO RANCH
MODE ADDRESS
PLAN CHECK #

NO.	DATE	COMMENT
	12/1/19	FIBER COORDINATION
	3/7/2014	CENTERPOINT REVISIONS
	4/17/2014	CENTERPOINT REVISIONS

REVISIONS	

RELEASE	
DATE	SUBMITTAL
11-29-13	1ST CITY SUBMITTAL
1-21-14	CENTERPOINT SUBMITTAL

REPRODUCTION OR USE OF THIS DRAWING
AND/OR THE INFORMATION CONTAINED IN
IT IS FORBIDDEN WITHOUT THE WRITTEN
PERMISSION OF THE OWNER.

SHIFT

Shift Companies, LLC
7333 E. MOUNT VISTA ROAD
SCOTTSDALE, ARIZONA 85257
PH: 480.244.0629
FAX: 480.244.0183

RECORD DRAWING DRAFTING ONLY



CROWN CASTLE
1220 AUGUSTA DR.,
HOUSTON, TX 77057
PH: 409.343.4401

ION-M7P/17P - Product Specification

Abstract Background: The purpose of this study was to determine the prevalence of self-reported hearing impairment in a community sample of older adults. Methods: Data were obtained from the 1992 National Health and Medical Research Council's Survey of Health, Ageing and Retirement in Australia. Results: The prevalence of self-reported hearing impairment was 10.9% in the community sample. The prevalence of self-reported hearing impairment was higher in men than in women, in those with lower education, and in those with lower income. Conclusion: The prevalence of self-reported hearing impairment in a community sample of older adults is 10.9%. The prevalence of self-reported hearing impairment is higher in men than in women, in those with lower education, and in those with lower income.

FROM CASTLE
EXPOSITION, 12/17/05
BY 004345.A401

RECORD DRAWING ISSUE DATE: 4/7/04

SHIFT

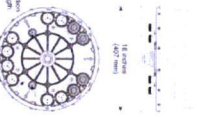
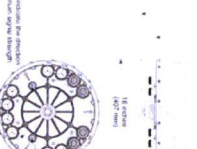
SPR COMPANIES, LLC
10000 W. 10TH AVENUE
SOUTH PLAINFIELD, NJ 07080
TEL: 408-344-0103

THIS DRAWING IS COPYRIGHTED AND IS NOT TO BE REPRODUCED OR RE-TRANSMITTED IN ANY MANNER WITHOUT THE WRITTEN PERMISSION OF THE OWNER.

SCALE N.I.S.	16
--------------	----

1-21-14	CENTERPOINT SUBMITTAL

840 10510 840 10511
700 MHz Dual Band Omni Antenna



SCALE: N 1 S.


CASE

PLOT SCALE: 1:1 @ 24"x36"; 1:2 @ 11"x17"

LATITUDE	24.72250
LONGITUDE	-95.71776
POLE TYPE	WOOD POLE
POLE D.F.	N/A

GENERAL NOTES

1. PLANT IMPROVED GROUND EQUIPMENT A MINIMUM 14" DIAMETER ON
2. CONNECTION TO TIE-TO LOCUS DEEPER THAN 10" DIAMETER ON TIE-TO
3. FROM TO CONNECTION
4. EX. LARGER SIZE PLANTING AND SECOND PLANTING INDICATED
5. PLANTING SHALL BE REPLACED WITH SAME SIZE AND SPECIES
6. CONNECTION TO HMO LOCUS EX. PLANTING FROM TO EXCAVATION
7. SITE PLAN A MAINTENANCE REPRESENTATION ONLY. GENERAL
8. VERIFY ALL PLANTING DATE INFORMATION WITH MAINTENANCE. 5% OF ALL
9. EX. TIE-TO LOCUS SHOWN ON PLANS ARE APPROXIMATE ONLY
10. AS PROVIDED BY LOCAL UTILITIES.

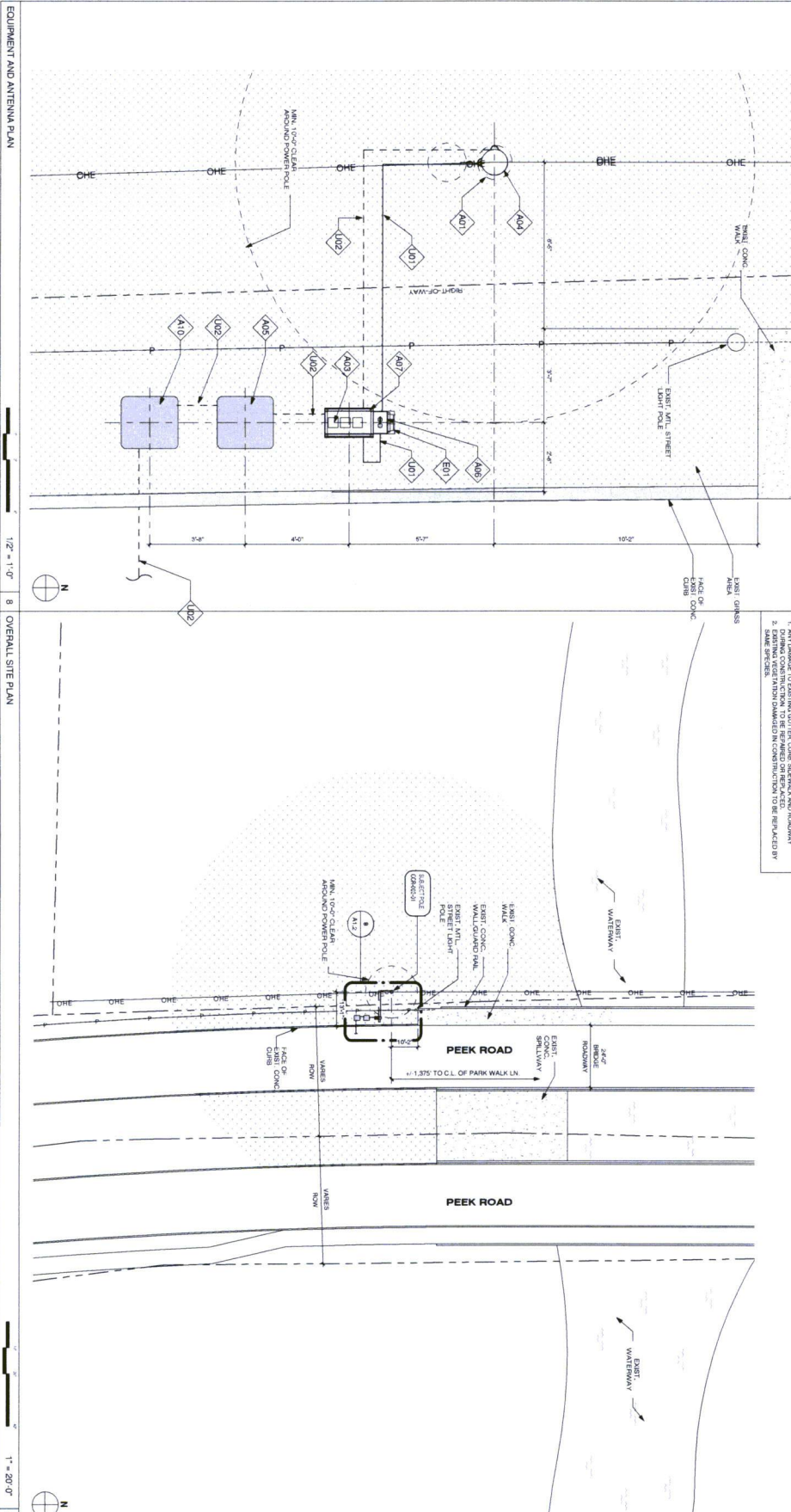



CALL TWO WORKING DAYS
BEFORE YOU DIG
UNDEGROUND SERVICE
LET US TO YOUR
1-800-545-8005

CROWN CASTLE
1200 ALBUQUERQUE
HOUSTON, TX 77067
PR 409.348.4461

RECORD DRAWINGS ISSUE DATE: 4/1/2014

RECORD DRAWING PARTIAL ONLY





Shirf Companies, LLC
 10070 ROAD 100
 SCOTTSDALE, ARIZONA 85257
 TEL: 480-343-8883

THIS DRAWING IS COPYRIGHTED AND IS THE PROPERTY OF SHIRF! COMPANIES, LLC. IT IS PROHIBITED TO REPRODUCE OR TO USE THE IT IS PROHIBITED TO REPRODUCE OR TO USE THE INFORMATION CONTAINED HEREIN FOR ANY OTHER REPRODUCTION OR USE OF THIS DRAWING WITHOUT THE WRITTEN PERMISSION OF THE OWNER.

PROJECT NAME
 VERIZON - CINCO RANCH

MODE ADDRESS
 PEEK RD. & WILLOW
 FORK DRAINAGE DITCH

NODE #CCR-002-01

HUB AREA
 CINCO RANCH, TX

SHEET NUMBER
 4 OF 8

DATE	COMMENTS
11/11/13	FINAL CONSTRUCTION
5/24/14	CONSTRUCTION RESUBMISSION
4/23/14	CONSTRUCTION RESUBMISSION

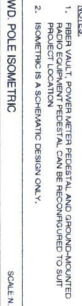
DATE	COMMENTS
1/26/13	1ST CITY SUBMITTAL
7/24/14	CENTERPOINT SUBMITTAL

SHEET TITLE
 SITE PLAN, EQUIPMENT
 AND ANTENNA PLAN

SHEET NUMBER
 PAGE

CASE #

PLAN CHECK #



KEYNOTE	DESCRIPTION	DETAIL NUMBER
A01	PROPOSED CHOWN CASTLE PANEL ANTENNA	810-1.8 10711.9
A03	PROPOSED CHOWN CASTLE INBUILT UNIT INSIDE	1501-1.8 10711.9
A04	PROPOSED NEW REPLACEMENT POLE	46-
A05	PROPOSED CHOWN CASTLE UNDERGROUND CONCRETE UNDERWATER	5001-2
A06	CONCRETE UNDERWATER	5001-2
A07	PROPOSED CHOWN CASTLE NOISE DETERMINATION	1501-1.8
A08	PROPOSED CHOWN CASTLE EQUIPMENT CABINET	1501-1.8
A09	N/A	
A10	PROPOSED CHOWN CASTLE CONVEYER BELT	810-1.8
A11	PROPOSED CHOWN CASTLE UNDERGROUND CONCRETE	5001-2
A12	PROPOSED CHOWN CASTLE UNDERGROUND CONCRETE	5001-2
E01	PROPOSED POWER WIRE IN PROXIMITY TO CHOWN CASTLE ANTENNA AND EQUIPMENT	810-1.8

A1.3 5 OF 8

THIS DRAWING IS COPYRIGHTED AND IS THE SOLE PROPERTY OF THE OWNER. IT IS PRODUCED SOLELY FOR USE BY THE OWNER AND ITS AFFILIATES. REPRODUCTION OR USE OF THIS DRAWING AND/OR THE INFORMATION CONTAINED IN IT IS FORBIDDEN WITHOUT THE WRITTEN PERMISSION OF THE OWNER.



**CROWN
CASTLE**



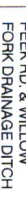
REVISIONS		
NO.	DATE	COMMENT
	12.11.13	FIBER COORDINATION
	3.7.2014	CENTERPOINT REVISIONS
	4.17.2014	CENTERPOINT REVISIONS

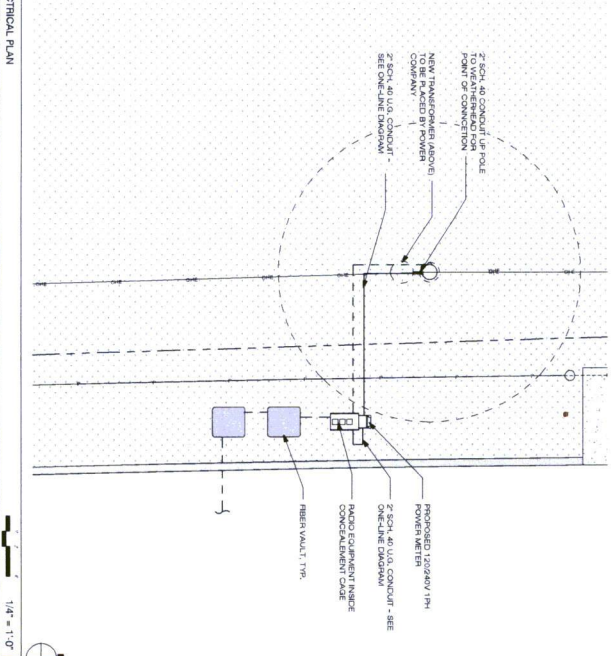
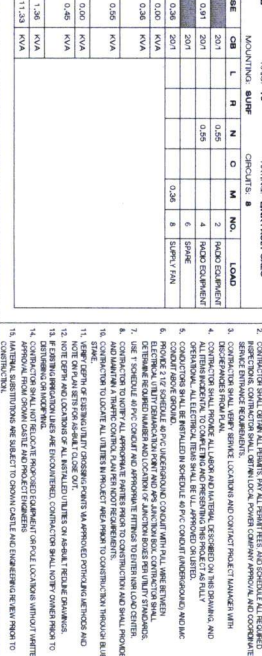
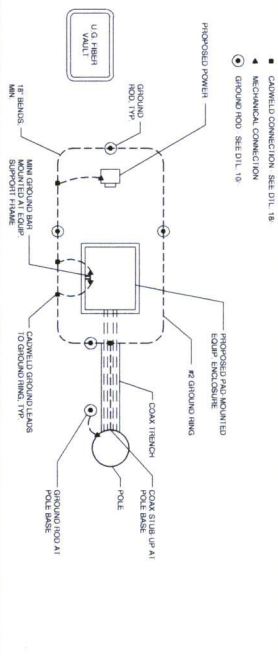
Node Address

PEEK RD. & WILLOW
FORK DRAINAGE DITCH

CINCO RANCH, TX

100



[illegible]

VOLUNTARY 15000000									
PANEL A									
PANEL A									
	NO.	M	O	N	I	T			
CONVENIENCE RECEIPT# 1							0.26		
CONVENIENCE RECEIPT# 3							0.26		
EXHAUST FAN									
BUSSED SPACE	5	0.26							
7									

PER NEC 210.4(B)

PROVIDE COMMON TYPE PANELS
 WITH 15 AMP CIRCUIT BREAKERS
 IN PANELS. (MULTI-CIRCUIT CIRCUIT)

LIFTING LOADS	
RECEPTACLE 15000000	15000000
NON-COMMERCIAL	
CONVENIENCE 15000000	15000000
WIRING - PER NEC 210.4(B)	
TOTAL PANEL A LOAD	
TOTAL SERVICE A	

[illegible]

1. **RESEARCH DESIGN AND OBJECTIVES** – The study was designed to investigate the impact of various factors on the success of a new product launch. The primary objective was to determine the relationship between marketing strategy and sales performance.

2. **LITERATURE REVIEW** – Previous studies have shown that a well-defined marketing strategy is crucial for the success of a new product launch. Factors such as target market selection, competitive analysis, and promotional mix are considered key determinants of success.

3. **METHODS** – The study employed a quantitative research design, utilizing a survey of 100 new product launches over a period of 12 months. Data was collected from various sources, including company records, industry reports, and direct communication with launch teams.

4. **RESULTS** – The results indicated a strong positive correlation between the effectiveness of the marketing strategy and the success of the product launch. Specifically, launches with a clear target market and a comprehensive promotional mix achieved significantly higher sales volumes compared to those without.

5. **CONCLUSIONS** – The study concludes that a strategic approach to marketing is essential for the success of a new product launch. Companies should invest in thorough market research and develop a tailored marketing plan to maximize their chances of success.


6. **IMPLICATIONS** – The findings have important implications for both academic research and practical application. Future studies could explore the long-term effects of marketing strategies and the role of digital marketing in product launches.

7. **REFERENCES** – The study references several key works in the field of marketing and product development, including works by Kotler (1997), Porter (1985), and recent industry analyses.

8. **ACKNOWLEDGEMENTS** – The authors would like to thank the participating companies and the research team for their valuable contributions to the study.

9. **APPENDICES** – The study includes several appendices, including a detailed description of the survey instrument and a list of the participating companies.

10. **CONTACT INFORMATION** – For further information or to request a copy of the full report, please contact the corresponding author at [email address].



CROWN CASTLE
1500 ALABAMA DRIVE
SUITE 100
FARMERSVILLE, TX 75440
PH: 409.334.4401

RECORD DRAINAGE ISSUE DATE: 4/12/2014

SHIFT

SHIFT COMPANIES, LLC
7031 EIGHTH STREET
SUITE 100
FARMERSVILLE, TX 75440
PH: 409.334.6150

THE DRAWING IS CONFIGURED AND IS THE SOLE PROPERTY OF THE OWNER. IT IS NOT TO BE REPRODUCED, COPIED, LOANED AND ITS APPLICATES. BY THE SIGNATURE OF THE ENGINEER, THE OWNER AND/OR THE INFORMATION CONTAINED HEREON IS NOT TO BE REPRODUCED OR TRANSMITTED IN ANY FORM OR BY ANY MEANS, ELECTRONIC OR MECHANICAL, INCLUDING PHOTOCOPYING, RECORDING, OR BY ANY INFORMATION STORAGE AND RETRIEVAL SYSTEM, WITHOUT THE WRITTEN PERMISSION OF THE OWNER.

RELEASE	
DATE	5-20-2014
12-31-14	5ST CITY SUBMITTAL
	2ND SUBMITTAL

REVISIONS	
NO.	COMMENT
1	FINAL CONFIGURATION
2	CONTRIBUTOR REVISIONS
3	CONTRIBUTOR REVISIONS

PROJECT NAME

VERIZON - CINCO RANCH

WORK ADDRESS

NODE #:CCR-002-01

PEEK RD. & WILLOW FORK DRAINAGE DITCH

HUB DATA

CINCO RANCH, TX

SHIFT JOB NUMBER

120603

SHEET TITLE

ELECTRICAL DETAILS AND NOTES (GROUNDING DETAILS AND NOTES)

SHEET NUMBER

8 OF 8

IN HOUSE

DRAWN BY: RA

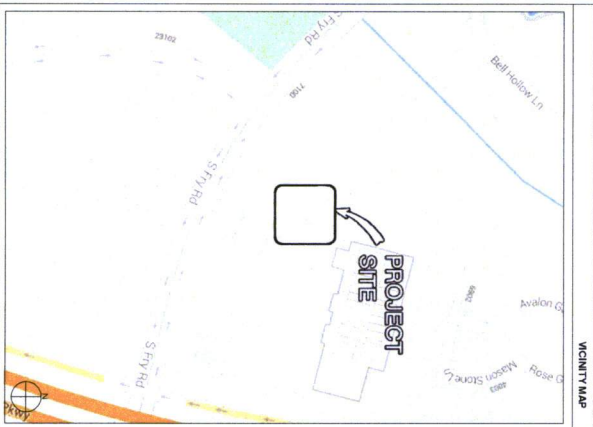
CHECKED BY: CM

DATE

4/12/2014

CROWN CASTLE

PROJECT NAME: VERIZON - CINCO RANCH
PROJECT ADDRESS: HOME DEPOT PARKING LOT, N. OF FRY RD.
PROJECT TYPE: WOOD POLE
HUB AREA: CINCO RANCH, TX
NODE #(s): CCR-008-01
COORDINATES: LAT: 29.715860, LONG: -95.776210



PROJECT TEAM	
ARCHITECT	STRUCTURAL
VERIZON - CINCO RANCH Address: 2301 E. MONTE VISTA RD. SCOTTSDALE, AZ 85257 Phone Number: 480-344-4444 Contact: CHIEF OFFICE	PER ENGINEER Address: 2301 E. MONTE VISTA RD. SCOTTSDALE, AZ 85257 Phone Number: 480-344-4444 Contact: CHIEF OFFICE
FIBER ENGINEERING	GENERAL CONTRACTOR
VERIZON - CINCO RANCH Address: 2301 E. MONTE VISTA RD. SCOTTSDALE, AZ 85257 Phone Number: 480-344-4444 Contact: CHIEF OFFICE	VERIZON - CINCO RANCH Address: 2301 E. MONTE VISTA RD. SCOTTSDALE, AZ 85257 Phone Number: 480-344-4444 Contact: CHIEF OFFICE
PROJECT MANAGER	
VERIZON - CINCO RANCH Address: 2301 E. MONTE VISTA RD. SCOTTSDALE, AZ 85257 Phone Number: 480-344-4444 Contact: CHIEF OFFICE	

PROJECT SUMMARY	
PROJECT NAME: VERIZON - CINCO RANCH	APPLICANT: CROWN CASTLE
PROJECT AREA: CINCO RANCH, TX	CONTRACTOR: BRUCE POTTER
ALLOCATION: FIBER AND CABLE ENGINEERING DEPT.	CODES: 2008 INTERNATIONAL BUILDING CODE AND 2008 NATIONAL ELECTRICAL CODE (NEC)
CONTRACT: 2008-008-01	KEY MAP AREA: 508
HANDCAPPED REQUIREMENTS: FACILITY IS HANDCAPPED AND NOT FOR HANDCAPPED ACCESS REQUIREMENTS ARE NOT REQUIRED.	
PERMITS: PERMITS ARE REQUIRED FOR THE PROJECT.	
OWNER/COMPANY: VERIZON - CINCO RANCH	
CONTACT: KEN CORTEZ	

Sheet #	T1.1 Sheet Index	Sheet Description	Page
1.1	TITLE SHEET	TITLE SHEET	1
1.2	PROJECT AREA	PROJECT AREA	2
1.3	CONTRACTOR	CONTRACTOR	3
1.4	PERMITS	PERMITS	4
1.5	CONSTRUCTION	CONSTRUCTION	5
1.6	CONNECTIONS	CONNECTIONS	6
1.7	CONNECTIONS	CONNECTIONS	7
1.8	CONNECTIONS	CONNECTIONS	8

RELEASE	
DATE	11-08-13
BY	ST CITY ENGINEER
DATE	11-08-13
BY	ST CITY ENGINEER
PERMITS NO. DATE COMMENT 11-11-13 PERMITS COMPLETED 11-11-13 PERMITS COMPLETED	
PROJECT NAME VERIZON - CINCO RANCH	
NODE ADDRESS NODE # CCR-008-01 HOME DEPOT PARKING LOT, N. OF FRY RD.	
HUB AREA CINCO RANCH, TX	
SHEET JOB NUMBER 120603	
SHEET TITLE TITLE SHEET	
SHEET NUMBER 11.1	
PAGE 1 OF 8	

ABBREVIATIONS AND SYMBOLS		SCALE: NTS	
— — — — —	CENTER LINE		REGION
— — — — —	PROPERTY LINE		KEY NOTE
— — — — —	RIGHT-OF-WAY		DETAIL REFERENCE
— — — — —	PIPE		ELEVATION REFERENCE
— 0' — 0' —	GAS		SECTION REFERENCE
— 6' — 6' —	POWER		ELEVATION MARKER
— 3' — 5' —	SEWERY SEWER		PHOTOGRAM REFERENCE
— 60' — 10' —	STORM DRAIN		ANTENNA AZIMUTH
— W — W —	WATER		NEW NUMBER
— P — P —	LIGHT CIRCUIT POWER		SHEET NUMBER
			SHEET GROUP

[illegible]

KATHREIN SCALA DIVISION

700 MHz Dual Band Omni Antenna

Antenna 1 Antenna 2

Model	840 10510	840 10511
Frequency Range	825-845 MHz	825-845 MHz
Power	60W	60W
Gain	2.1 dBi	2.1 dBi
VSWR	1.5:1	1.5:1
Impedance	50 Ohms	50 Ohms
Connector	N-Type	N-Type
Dimensions	4.1 x 1.4 x 1.4 inches	4.1 x 1.4 x 1.4 inches
Weight	0.5 lbs	0.5 lbs
Material	Aluminum	Aluminum
Finish	Black	Black
Mounting	Flange Mount	Flange Mount
Notes	See drawing for details.	

700 MHz Dual Band Omni Antenna

Antenna 1 Antenna 2

Model	840 10510	840 10511
Frequency Range	825-845 MHz	825-845 MHz
Power	60W	60W
Gain	2.1 dBi	2.1 dBi
VSWR	1.5:1	1.5:1
Impedance	50 Ohms	50 Ohms
Connector	N-Type	N-Type
Dimensions	4.1 x 1.4 x 1.4 inches	4.1 x 1.4 x 1.4 inches
Weight	0.5 lbs	0.5 lbs
Material	Aluminum	Aluminum
Finish	Black	Black
Mounting	Flange Mount	Flange Mount
Notes	See drawing for details.	

KATHREIN SCALA DIVISION

700 MHz Dual Band Omni Antenna

Antenna 1 Antenna 2

Model	840 10510	840 10511
Frequency Range	825-845 MHz	825-845 MHz
Power	60W	60W
Gain	2.1 dBi	2.1 dBi
VSWR	1.5:1	1.5:1
Impedance	50 Ohms	50 Ohms
Connector	N-Type	N-Type
Dimensions	4.1 x 1.4 x 1.4 inches	4.1 x 1.4 x 1.4 inches
Weight	0.5 lbs	0.5 lbs
Material	Aluminum	Aluminum
Finish	Black	Black
Mounting	Flange Mount	Flange Mount
Notes	See drawing for details.	

700 MHz Dual Band Omni Antenna

Antenna 1 Antenna 2

Model	840 10510	840 10511
Frequency Range	825-845 MHz	825-845 MHz
Power	60W	60W
Gain	2.1 dBi	2.1 dBi
VSWR	1.5:1	1.5:1
Impedance	50 Ohms	50 Ohms
Connector	N-Type	N-Type
Dimensions	4.1 x 1.4 x 1.4 inches	4.1 x 1.4 x 1.4 inches
Weight	0.5 lbs	0.5 lbs
Material	Aluminum	Aluminum
Finish	Black	Black
Mounting	Flange Mount	Flange Mount
Notes	See drawing for details.	

SCALE: N.T.S. 12

KATHREIN SCALA DIVISION

700 MHz Dual Band Omni Antenna

Antenna 1 Antenna 2

Model	840 10510	840 10511
Frequency Range	825-845 MHz	825-845 MHz
Power	60W	60W
Gain	2.1 dBi	2.1 dBi
VSWR	1.5:1	1.5:1
Impedance	50 Ohms	50 Ohms
Connector	N-Type	N-Type
Dimensions	4.1 x 1.4 x 1.4 inches	4.1 x 1.4 x 1.4 inches
Weight	0.5 lbs	0.5 lbs
Material	Aluminum	Aluminum
Finish	Black	Black
Mounting	Flange Mount	Flange Mount
Notes	See drawing for details.	

700 MHz Dual Band Omni Antenna

Antenna 1 Antenna 2

Model	840 10510	840 10511
Frequency Range	825-845 MHz	825-845 MHz
Power	60W	60W
Gain	2.1 dBi	2.1 dBi
VSWR	1.5:1	1.5:1
Impedance	50 Ohms	50 Ohms
Connector	N-Type	N-Type
Dimensions	4.1 x 1.4 x 1.4 inches	4.1 x 1.4 x 1.4 inches
Weight	0.5 lbs	0.5 lbs
Material	Aluminum	Aluminum
Finish	Black	Black
Mounting	Flange Mount	Flange Mount
Notes	See drawing for details.	

KATHREIN SCALA DIVISION

700 MHz Dual Band Omni Antenna

Antenna 1 Antenna 2

Model	840 10510	840 10511
Frequency Range	825-845 MHz	825-845 MHz
Power	60W	60W
Gain	2.1 dBi	2.1 dBi
VSWR	1.5:1	1.5:1
Impedance	50 Ohms	50 Ohms
Connector	N-Type	N-Type
Dimensions	4.1 x 1.4 x 1.4 inches	4.1 x 1.4 x 1.4 inches
Weight	0.5 lbs	0.5 lbs
Material	Aluminum	Aluminum
Finish	Black	Black
Mounting	Flange Mount	Flange Mount
Notes	See drawing for details.	

700 MHz Dual Band Omni Antenna

Antenna 1 Antenna 2

Model	840 10510	840 10511
Frequency Range	825-845 MHz	825-845 MHz
Power	60W	60W
Gain	2.1 dBi	2.1 dBi
VSWR	1.5:1	1.5:1
Impedance	50 Ohms	50 Ohms
Connector	N-Type	N-Type
Dimensions	4.1 x 1.4 x 1.4 inches	4.1 x 1.4 x 1.4 inches
Weight	0.5 lbs	0.5 lbs
Material	Aluminum	Aluminum
Finish	Black	Black
Mounting	Flange Mount	Flange Mount
Notes	See drawing for details.	

SCALE: N.T.S. 16

EQUIPMENT AND ANTENNA PLAN

1/2" = 1'-0"

8 OVERALL SITE PLAN

1/2" = 1'-0"

8 OVERALL SITE PLAN

1/2" = 1'-0"

8 OVERALL SITE PLAN

1/2" = 1'-0"

8 OVERALL SITE PLAN

1/2" = 1'-0"

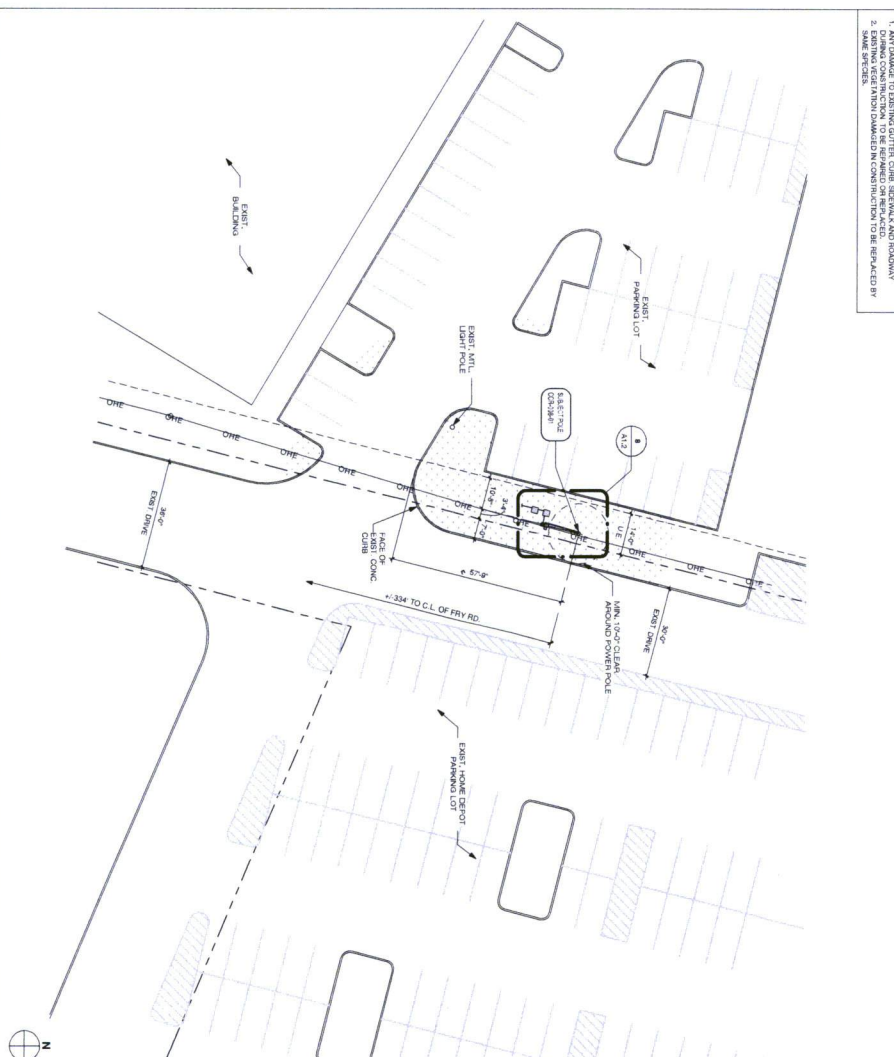
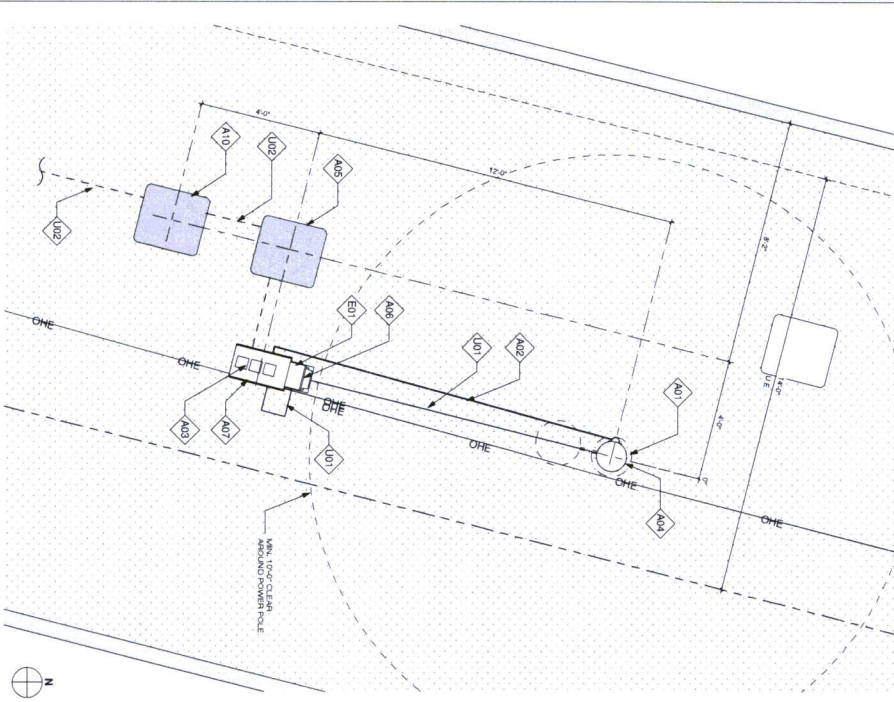
8 OVERALL SITE PLAN

1/2" = 1'-0"

8 OVERALL SITE PLAN

1/2" = 1'-0"

8 OVERALL SITE PLAN



NOTES:
1. ANY DAMAGE TO EXISTING UTILITIES, CURB, SIDEWALKS AND ROADWAYS
2. EXISTING UTILITIES SHALL BE REPAIRED OR REPLACED BY THE SAME SPECIES.

KEYNOTE	DESCRIPTION	DETAIL
A01	PROPOSED CROWN CASTLE WIRE ANTENNA N	4.5' x 4.5'
A02	PROPOSED CROWN CASTLE WIRE ANTENNA N	12' x 12'
A03	PROPOSED CROWN CASTLE WIRE ANTENNA N	20' x 12'
A04	PROPOSED CROWN CASTLE WIRE ANTENNA N	15' x 12'
A05	PROPOSED CROWN CASTLE WIRE ANTENNA N	4.5' x 4.5'
A06	PROPOSED CROWN CASTLE WIRE ANTENNA N	4.5' x 4.5'
A07	PROPOSED CROWN CASTLE WIRE ANTENNA N	20' x 12'
A08	PROPOSED CROWN CASTLE WIRE ANTENNA N	15' x 12'
A09	PROPOSED CROWN CASTLE WIRE ANTENNA N	4.5' x 4.5'
A10	PROPOSED CROWN CASTLE WIRE ANTENNA N	4.5' x 4.5'

KEYNOTE	DESCRIPTION	DETAIL
E01	PROPOSED CROWN CASTLE WIRE ANTENNA N	4.5' x 4.5'
E02	PROPOSED CROWN CASTLE WIRE ANTENNA N	12' x 12'
E03	PROPOSED CROWN CASTLE WIRE ANTENNA N	20' x 12'
E04	PROPOSED CROWN CASTLE WIRE ANTENNA N	15' x 12'
E05	PROPOSED CROWN CASTLE WIRE ANTENNA N	4.5' x 4.5'
E06	PROPOSED CROWN CASTLE WIRE ANTENNA N	4.5' x 4.5'
E07	PROPOSED CROWN CASTLE WIRE ANTENNA N	20' x 12'
E08	PROPOSED CROWN CASTLE WIRE ANTENNA N	15' x 12'
E09	PROPOSED CROWN CASTLE WIRE ANTENNA N	4.5' x 4.5'
E10	PROPOSED CROWN CASTLE WIRE ANTENNA N	4.5' x 4.5'

LOCATION	24.71560
POLE TYPE	WOOD POLE
POLE ID #	N/A



- GENERAL NOTES**
1. ANY PROPOSED GROUND EQUIPMENT A NATURAL EARTH COLUMN
 2. CONTINUATION TO FIELD LOCATE (EAST, UNDERGROUND, UTILITIES)
 3. PRIOR TO CONSTRUCTION
 4. CONTRACTOR SHALL BE RESPONSIBLE FOR OBTAINING ALL NECESSARY PERMITS AND APPROVALS FROM ALL AFFECTED AGENCIES
 5. SITE PLAN IS A SUPPLEMENTARY REPRESENTATION ONLY. VERIFY ALL DIMENSIONS.
 6. VERIFY ALL PROPERTY LINE INFORMATION WITH AVAILABLE LOCAL DATA
 7. ALL DIMENSIONS SHALL BE IN FEET AND INCHES, UNLESS OTHERWISE NOTED
 8. ALL DIMENSIONS SHALL BE APPROXIMATE ONLY



CROWN CASTLE
10000 N. DALLAS STREET
DALLAS, TX 75243
PH: 469-444-4444

RECORD DRAWING DATE: 4/17/14

RECORD DRAWING DATE: 4/17/14

SHIFT

SHIFT COMPANY, LLC
7001 NORTH WORTHAVEN
SUITE 200
DALLAS, TX 75243
PH: 469-444-4444

THIS DRAWING IS THE PROPERTY OF SHIFT COMPANY, LLC. IT IS TO BE USED ONLY FOR THE PROJECT AND SITE SPECIFICALLY IDENTIFIED HEREIN. ANY REUSE OR MODIFICATION OF THIS DRAWING WITHOUT THE WRITTEN PERMISSION OF THE COMPANY IS PROHIBITED.

RELEASE	DATE	BY
11-28-13	131 CITY STREET	11-28-13
1-14-14	CENTROPOINT STREET	1-14-14

REVISION	NO.	DATE	COMMENT
1	12/11/13	FINISH CONSTRUCTION	12/11/13
2	4/17/14	CENTROPOINT STREET	4/17/14

PROJECT NAME: VERIZON - CINCO RANCH

MODE ADDRESS: HOME DEFECT PARKING LOT N. OF FRY RD.

NODE #: CCR-008-01

HAIR AREA: CINCO RANCH, TX

SHEET JOB NUMBER: 120603

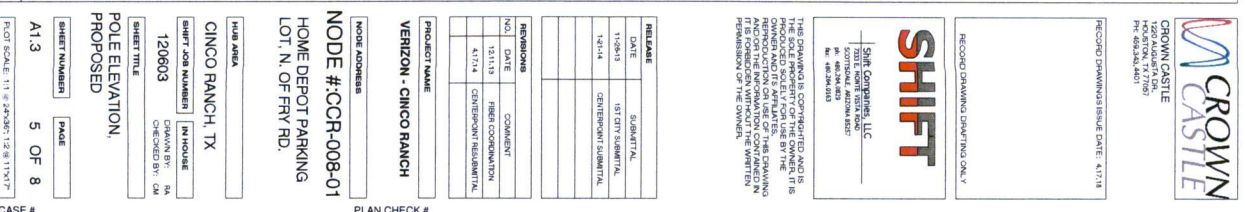
SHEET TITLE: SITE PLAN, EQUIPMENT AND ANTENNA PLAN

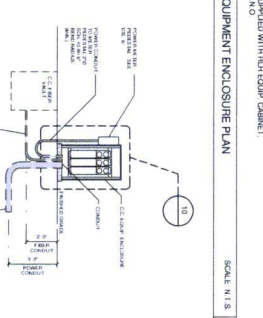
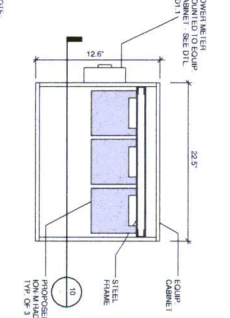
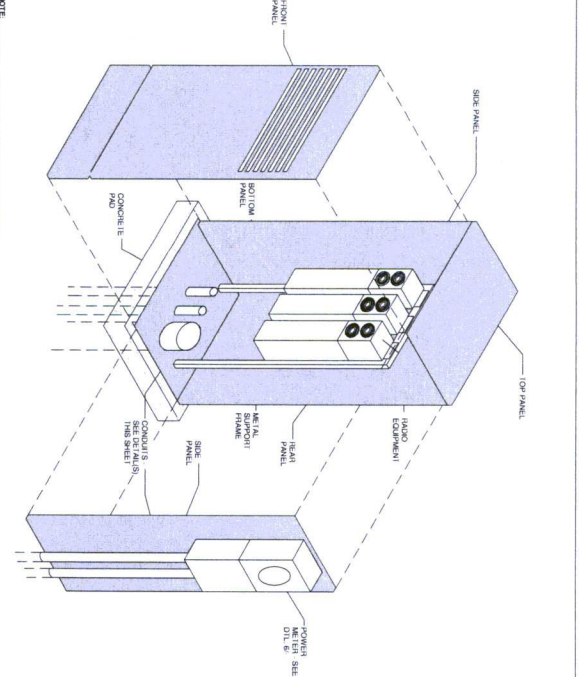
SHEET NUMBER: 4 OF 8


SCALE: 1" = 20' 0"

CASE #

PLAN CHECK #

[illegible]





CROWN

CASTLE

1000 KANAWAY LN.

1000 KANAWAY LN.

PO BOX 200, AUSTIN TX 78768

PH: 480-250-6601

RECORD DRAWINGS ISSUE DATE: 4.17.14

RECORD DRAWING DRAFTING ONLY

SHIFT

COMPANIES, LLC

70101 DOWNEY RD, SUITE 200

HOUSTON, TX 77057

PH: 480-254-0003

FX: 480-254-0103

THE DRAWING IS A COMPUTERIZED AND IT IS THE SOLE PROPERTY OF THE OWNER. IT IS TO BE USED ONLY FOR THE PROJECT AND THE OWNER AND ITS AFFILIATES. BY THE USE AND/OR MODIFICATION OF THIS DRAWING, THE USER AGREES TO HOLD THE COMPANY HARMLESS AND TO INDEMNIFY THE COMPANY FROM ALL DAMAGES AND LOSSES. NO PART OF THIS DRAWING IS TO BE REPRODUCED OR TRANSMITTED IN ANY FORM OR BY ANY MEANS, ELECTRONIC OR MECHANICAL, WITHOUT THE WRITTEN PERMISSION OF THE COMPANY.

PROJECT NAME

VERIZON - CINCO RANCH

NO. ADDRESS

120603

HOME DEPOT PARKING LOT, N. OF FRY RD.

HOME #.CCR-008-01

HUB AREA

CINCO RANCH, TX

SHIFT JOB NUMBER

120603

IN HOUSE

120603

SHEET TITLE

CONSTRUCTION DETAILS

DRAWN BY:

RA

CHECKED BY:

GM

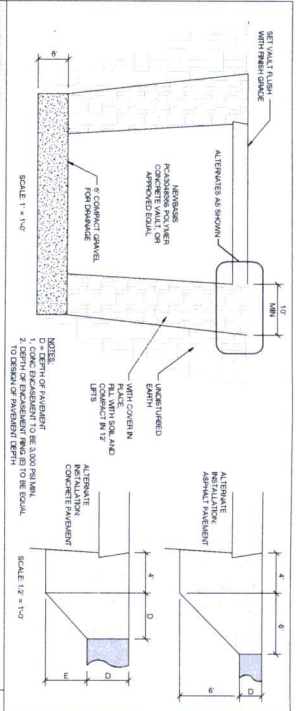
SHEET NUMBER

6 OF 8

PAGE

6 OF 8

PLAT SCALE: 1" = 20'0"0" 1/2" = 11'0"0"





SCALE



SCAL



5	9
---	---



5



J. E. NITSCHKE

NTS

NTS



W/O



ONE



NTS



8

0.

SCOTTSDALE, ARIZONA 85257
tel: 480.364.0829

VERIZON - CINCO RANCH


CHINESE BANKING BY

[illegible]

ABBREVIATIONS AND SYMBOLS	
— — — — —	CENTER LINE
— — — — —	PROPERTY LINE
— — — — —	RIGHT-OF-WAY
— f — — f —	RIVER
— 0 — — 0 —	GAS
— 0 — — 0 —	POWER
— 3 — — 3 —	SANITARY SEWER
— 60 — — 10 —	STORM DRAIN
— W — — W —	WATER
— P — — P —	UPH CIRCULAR POWER

ABBREVIATIONS AND SYMBOLS	
	PERSON
	KEY NOTE
	CETAL REFERENCE
	ELEVATION REFERENCE
	SECTION REFERENCE
	ELEVATION NUMBER
	PICTURE REFERENCE
	ANTENNA AZIMUTH
	NEW NUMBER
	SHEET NUMBER
	SHEET GROUP


ABBREVIATIONS AND SYMBOLS	
	SCALE
	SCALE
	SCALE
	SCALE
	SCALE
	SCALE
	SCALE
	SCALE
	SCALE
	SCALE
	SCALE
	SCALE
	SCALE
	SCALE
	SCALE
	SCALE
	SCALE
	SCALE
	SCALE
	SCALE
	SCALE
	SCALE
	SCALE
	SCALE
	SCALE
	SCALE
	SCALE
	SCALE
	SCALE
	SCALE
	SCALE
	SCALE
	SCALE
	SCALE
	SCALE
	SCALE
	SCALE
	SCALE
	SCALE
	SCALE
	SCALE
	SCALE
	SCALE
	SCALE
	SCALE
	SCALE
	SCALE
	SCALE
	SCALE
	SCALE
	SCALE
	SCALE
	SCALE
	SCALE
	SCALE
	SCALE
	SCALE
	SCALE
	SCALE
	SCALE
	SCALE
	SCALE
	SCALE
	SCALE
	SCALE
	SCALE
	SCALE
	SCALE
	SCALE
	SCALE
	SCALE
	SCALE
	SCALE
	SCALE
	SCALE
	SCALE
	SCALE
	SCALE
	SCALE
	SCALE
	SCALE
	SCALE
	SCALE
	SCALE



CROWN CASTLE
1225 ALABAMA ST.
HOUSTON, TX 77058
TEL: 713-866-8800

RECORD DRAWING ISSUE DATE: 4/17/14

RECORD DRAWING DWTGNO: 001-X



SHIFT

JOHN CROWLEY, LLC
10000 N. FORT WORTH BLVD.
SCOTTSDALE, ARIZONA 85257
TEL: 480-363-6133

THE DATA AND INFORMATION CONTAINED HEREIN IS THE PROPERTY OF CROWN CASTLE. IT IS TO BE USED ONLY FOR THE PROJECT AND IS NOT TO BE REPRODUCED OR USED FOR ANY OTHER PROJECT WITHOUT THE WRITTEN PERMISSION OF THE OWNER.

RELEASE	
DATE	SUBMITTAL
11/28/13	ISS. CITY SUBMITTAL
12/10/14	CENTROPOINT SUBMITTAL

REVISIONS		
NO.	DATE	COMMENT
	12/11/13	PIPER COORDINATION
	4/17/14	CENTROPOINT RESUBMITTAL

PRODUCT NAME

VERSION - CINCO RANCH

MOORE ADDRESS

NOTE #: CCR-003-01

FRY RD., NE OF KATY-GASTON RD.

PLAN AREA

CINCO RANCH, TX

SHEET JOB NUMBER

120603

SHEET TITLE

DRAINAGE BY: CM

CHECKED BY:

GENERAL NOTES

ABBREVIATIONS AND SYMBOLS

SHEET NUMBER

2 OF 8

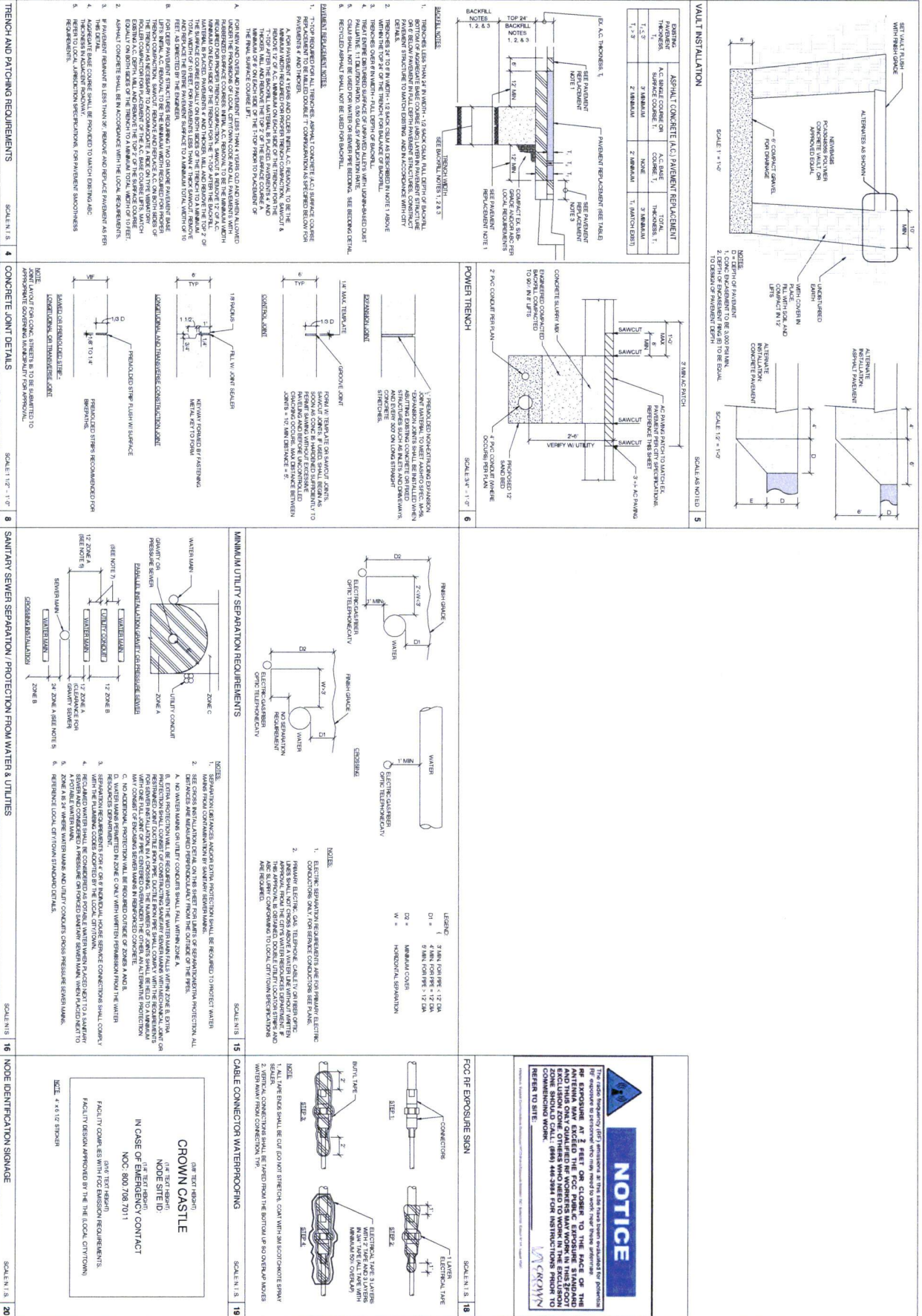
PLAN CHECK #

DATE: 11/28/2013 12:18:11 PM

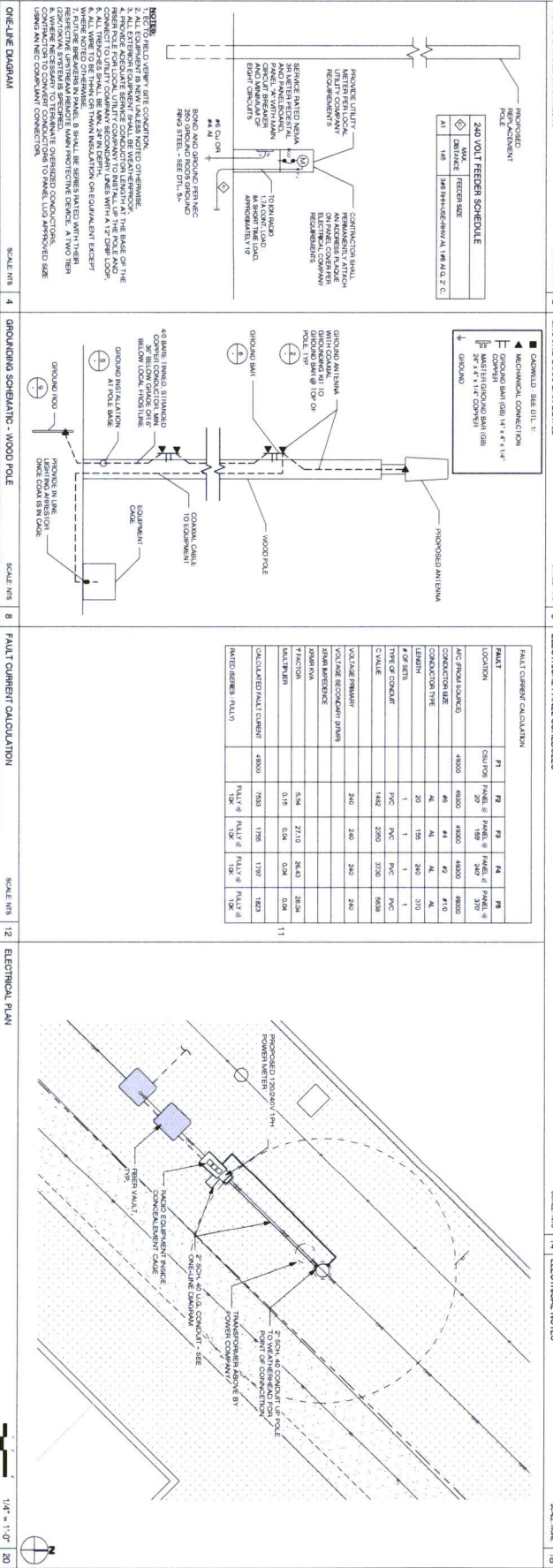
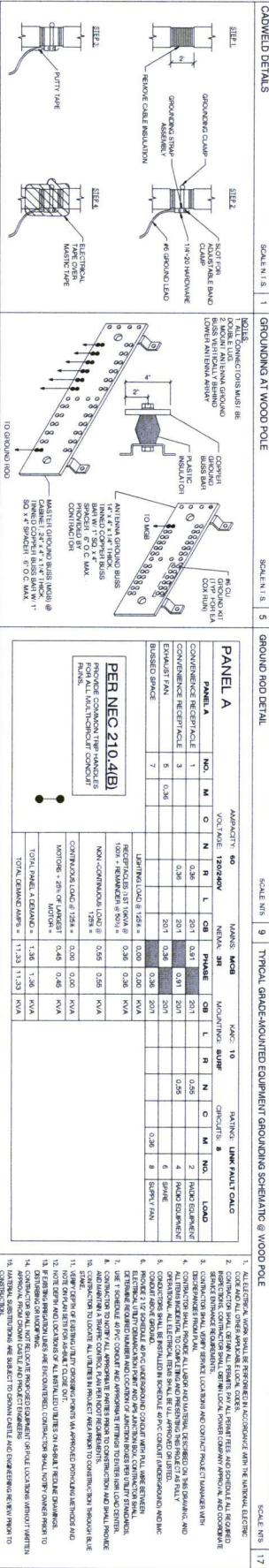
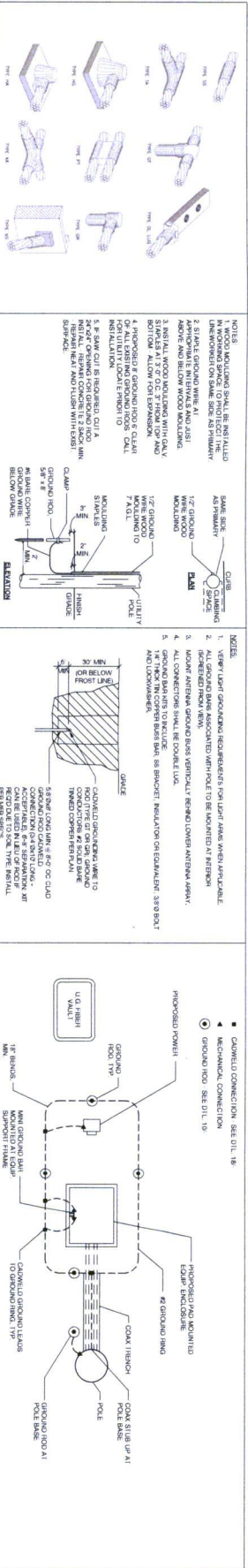
IONM477/17P - Product Specification		IONM477/17P - Product Specification	
<p>General Specifications</p> <p>Model: IONM477/17P Frequency: 1710-1720 MHz Power: 100W Antenna: 1710-2170 MHz Dimensions: 1710-2170 MHz Weight: 1710-2170 MHz Material: 1710-2170 MHz Finish: 1710-2170 MHz Color: 1710-2170 MHz Texture: 1710-2170 MHz Pattern: 1710-2170 MHz Beam: 1710-2170 MHz Gain: 1710-2170 MHz Efficiency: 1710-2170 MHz Reliability: 1710-2170 MHz Durability: 1710-2170 MHz Safety: 1710-2170 MHz Security: 1710-2170 MHz Compliance: 1710-2170 MHz Certification: 1710-2170 MHz Warranty: 1710-2170 MHz Support: 1710-2170 MHz Training: 1710-2170 MHz Documentation: 1710-2170 MHz Installation: 1710-2170 MHz Maintenance: 1710-2170 MHz Troubleshooting: 1710-2170 MHz Repair: 1710-2170 MHz Replacement: 1710-2170 MHz Upgrade: 1710-2170 MHz Expansion: 1710-2170 MHz Integration: 1710-2170 MHz Interoperability: 1710-2170 MHz Scalability: 1710-2170 MHz Flexibility: 1710-2170 MHz Adaptability: 1710-2170 MHz Versatility: 1710-2170 MHz Modularity: 1710-2170 MHz Configurability: 1710-2170 MHz Customizability: 1710-2170 MHz Personalizability: 1710-2170 MHz Individualizability: 1710-2170 MHz Tailorability: 1710-2170 MHz Adaptability: 1710-2170 MHz Flexibility: 1710-2170 MHz Modularity: 1710-2170 MHz Configurability: 1710-2170 MHz Customizability: 1710-2170 MHz Personalizability: 1710-2170 MHz Individualizability: 1710-2170 MHz Tailorability: 1710-2170 MHz</p>		<p>IONM477/17P - Product Specification</p> <p>Model: IONM477/17P Frequency: 1710-1720 MHz Power: 100W Antenna: 1710-2170 MHz Dimensions: 1710-2170 MHz Weight: 1710-2170 MHz Material: 1710-2170 MHz Finish: 1710-2170 MHz Color: 1710-2170 MHz Texture: 1710-2170 MHz Pattern: 1710-2170 MHz Beam: 1710-2170 MHz Gain: 1710-2170 MHz Efficiency: 1710-2170 MHz Reliability: 1710-2170 MHz Durability: 1710-2170 MHz Safety: 1710-2170 MHz Security: 1710-2170 MHz Compliance: 1710-2170 MHz Certification: 1710-2170 MHz Warranty: 1710-2170 MHz Support: 1710-2170 MHz Training: 1710-2170 MHz Documentation: 1710-2170 MHz Installation: 1710-2170 MHz Maintenance: 1710-2170 MHz Troubleshooting: 1710-2170 MHz Repair: 1710-2170 MHz Replacement: 1710-2170 MHz Upgrade: 1710-2170 MHz Expansion: 1710-2170 MHz Integration: 1710-2170 MHz Interoperability: 1710-2170 MHz Scalability: 1710-2170 MHz Flexibility: 1710-2170 MHz Adaptability: 1710-2170 MHz Versatility: 1710-2170 MHz Modularity: 1710-2170 MHz Configurability: 1710-2170 MHz Customizability: 1710-2170 MHz Personalizability: 1710-2170 MHz Individualizability: 1710-2170 MHz Tailorability: 1710-2170 MHz</p>	
<p>IONM477/17P - Product Specification</p> <p>Model: IONM477/17P Frequency: 1710-1720 MHz Power: 100W Antenna: 1710-2170 MHz Dimensions: 1710-2170 MHz Weight: 1710-2170 MHz Material: 1710-2170 MHz Finish: 1710-2170 MHz Color: 1710-2170 MHz Texture: 1710-2170 MHz Pattern: 1710-2170 MHz Beam: 1710-2170 MHz Gain: 1710-2170 MHz Efficiency: 1710-2170 MHz Reliability: 1710-2170 MHz Durability: 1710-2170 MHz Safety: 1710-2170 MHz Security: 1710-2170 MHz Compliance: 1710-2170 MHz Certification: 1710-2170 MHz Warranty: 1710-2170 MHz Support: 1710-2170 MHz Training: 1710-2170 MHz Documentation: 1710-2170 MHz Installation: 1710-2170 MHz Maintenance: 1710-2170 MHz Troubleshooting: 1710-2170 MHz Repair: 1710-2170 MHz Replacement: 1710-2170 MHz Upgrade: 1710-2170 MHz Expansion: 1710-2170 MHz Integration: 1710-2170 MHz Interoperability: 1710-2170 MHz Scalability: 1710-2170 MHz Flexibility: 1710-2170 MHz Adaptability: 1710-2170 MHz Versatility: 1710-2170 MHz Modularity: 1710-2170 MHz Configurability: 1710-2170 MHz Customizability: 1710-2170 MHz Personalizability: 1710-2170 MHz Individualizability: 1710-2170 MHz Tailorability: 1710-2170 MHz</p>		<p>IONM477/17P - Product Specification</p> <p>Model: IONM477/17P Frequency: 1710-1720 MHz Power: 100W Antenna: 1710-2170 MHz Dimensions: 1710-2170 MHz Weight: 1710-2170 MHz Material: 1710-2170 MHz Finish: 1710-2170 MHz Color: 1710-2170 MHz Texture: 1710-2170 MHz Pattern: 1710-2170 MHz Beam: 1710-2170 MHz Gain: 1710-2170 MHz Efficiency: 1710-2170 MHz Reliability: 1710-2170 MHz Durability: 1710-2170 MHz Safety: 1710-2170 MHz Security: 1710-2170 MHz Compliance: 1710-2170 MHz Certification: 1710-2170 MHz Warranty: 1710-2170 MHz Support: 1710-2170 MHz Training: 1710-2170 MHz Documentation: 1710-2170 MHz Installation: 1710-2170 MHz Maintenance: 1710-2170 MHz Troubleshooting: 1710-2170 MHz Repair: 1710-2170 MHz Replacement: 1710-2170 MHz Upgrade: 1710-2170 MHz Expansion: 1710-2170 MHz Integration: 1710-2170 MHz Interoperability: 1710-2170 MHz Scalability: 1710-2170 MHz Flexibility: 1710-2170 MHz Adaptability: 1710-2170 MHz Versatility: 1710-2170 MHz Modularity: 1710-2170 MHz Configurability: 1710-2170 MHz Customizability: 1710-2170 MHz Personalizability: 1710-2170 MHz Individualizability: 1710-2170 MHz Tailorability: 1710-2170 MHz</p>	

SHIFT COMPANIES, LLC		CROWN CASTLE	
<p>1315 NORTH WYOMING SUITE 200 DALLAS, TEXAS 75201 PH: 469-244-6333 FX: 469-244-6333</p>		<p>1315 NORTH WYOMING SUITE 200 DALLAS, TEXAS 75201 PH: 469-244-6333 FX: 469-244-6333</p>	
<p>THIS DRAWING IS COPYRIGHTED AND IS THE SOLE PROPERTY OF THE OWNER. IT IS TO BE USED ONLY FOR THE PROJECT AND ITS SPECIFICATIONS. NO PART OF THIS DRAWING IS TO BE REPRODUCED OR TRANSMITTED IN ANY FORM OR BY ANY MEANS, ELECTRONIC OR MECHANICAL, WITHOUT PERMISSION OF THE OWNER.</p>		<p>THIS DRAWING IS COPYRIGHTED AND IS THE SOLE PROPERTY OF THE OWNER. IT IS TO BE USED ONLY FOR THE PROJECT AND ITS SPECIFICATIONS. NO PART OF THIS DRAWING IS TO BE REPRODUCED OR TRANSMITTED IN ANY FORM OR BY ANY MEANS, ELECTRONIC OR MECHANICAL, WITHOUT PERMISSION OF THE OWNER.</p>	
<p>PROJECT NAME: VERIZON - CINCO RANCH</p>		<p>PROJECT NAME: VERIZON - CINCO RANCH</p>	
<p>MODE ADDRESS: NODE #CCR-003-01</p>		<p>MODE ADDRESS: NODE #CCR-003-01</p>	
<p>FRY RD. NE OF KATY-GASTON RD.</p>		<p>FRY RD. NE OF KATY-GASTON RD.</p>	
<p>HUB AREA: CINCO RANCH, TX</p>		<p>HUB AREA: CINCO RANCH, TX</p>	
<p>SHEET JOB NUMBER: 120603</p>		<p>SHEET JOB NUMBER: 120603</p>	
<p>SHEET TITLE: EQUIPMENT SPECIFICATIONS</p>		<p>SHEET TITLE: EQUIPMENT SPECIFICATIONS</p>	
<p>SHEET NUMBER: 11.3</p>		<p>SHEET NUMBER: 11.3</p>	
<p>PAGE: 3 OF 8</p>		<p>PAGE: 3 OF 8</p>	
<p>PLOT SCALE: 1" = 24'X26'12"X11'X17'</p>		<p>PLOT SCALE: 1" = 24'X26'12"X11'X17'</p>	

[illegible]



<p>RELEASE</p> <p>DATE: 11-28-13</p> <p>SUBMITTAL: 1ST CITY SUBMITTAL</p> <p>DATE: 12-11-14</p> <p>CENTERPOINT SUBMITTAL</p>		<p>REVISIONS</p> <table border="1"> <tr> <th>NO.</th> <th>DATE</th> <th>COMMENT</th> </tr> <tr> <td>1</td> <td>12-11-13</td> <td>REVISION: CORRECTION</td> </tr> <tr> <td>2</td> <td>4-17-14</td> <td>CENTERPOINT SUBMITTAL</td> </tr> </table>		NO.	DATE	COMMENT	1	12-11-13	REVISION: CORRECTION	2	4-17-14	CENTERPOINT SUBMITTAL
NO.	DATE	COMMENT										
1	12-11-13	REVISION: CORRECTION										
2	4-17-14	CENTERPOINT SUBMITTAL										
<p>PROJECT NAME</p> <p>VERICON - CINCO RANCH</p>												
<p>NOTE ADDRESS</p> <p>NOTE # CCR-003-01</p> <p>FRY RD., NE OF KATY-GASTON RD.</p>												
<p>MOD AREA</p> <p>CINCO RANCH, TX</p>												
<p>SHEET NUMBER</p> <p>120603</p> <p>IN HOUSE</p> <p>120603</p> <p>DRAWN BY: MA</p> <p>CHECKED BY: CM</p>												
<p>CONSTRUCTION DETAILS</p> <p>SHEET TITLE</p> <p>D1.2 7 OF 8</p>												
<p>PROJECT SCALE: 1" = 2'-0" (1" = 1'-0" 11x17")</p>												



RECORD DRAWING ISSUE DATE: 4/17/14

SHIFT Companies, LLC
1000 NORTH RICHARDSON
SUITE 100
DALLAS, TEXAS 75208
PH: 469-344-8300
FAX: 469-344-8303

PROJECT NAME: VERIZON - CINCO RANCH

MODE ADDRESS: NODE #CCR-003-01

FRY RD. NE OF KATY-GASTON RD.

PROJECT NUMBER: 120603

SHEET NUMBER: 8 OF 8

PROJECT TITLE: ELECTRICAL DETAILS AND NOTES, GROUNDING DETAILS AND NOTES

PROJECT NUMBER: 120603

SHEET NUMBER: 8 OF 8

PROJECT NAME: VERIZON - CINCO RANCH

MODE ADDRESS: NODE #CCR-003-01

FRY RD. NE OF KATY-GASTON RD.

PROJECT NUMBER: 120603

SHEET NUMBER: 8 OF 8

PROJECT TITLE: ELECTRICAL DETAILS AND NOTES, GROUNDING DETAILS AND NOTES

PROJECT NUMBER: 120603

SHEET NUMBER: 8 OF 8

CROWN CASTLE

PROJECT NAME: VERIZON - CINCO RANCH
PROJECT ADDRESS: S. OF FRY RD., E. OF PEEK RD.
PROJECT TYPE: WOOD POWER POLE
HUB AREA: CINCO RANCH, TX
NODE # (s): CCR-009-01
COORDINATES: LAT: 29.713900, LONG: -95.761860

VICINITY MAP		PROJECT TEAM		PROJECT SUMMARY		
		ARCHITECT Company: SHIFT CONSULTING Address: 1500 ADRIAN DR., SCOTTSDALE, AZ 85257 Phone Number: 480.348.4838 Fax Number: 480.348.4838 Contact: CHRIS WILSON	STRUCTURAL Company: MGC ENGINEERING C.T.S. Address: 3410 S. 87TH ST., HOUSTON, TX 77057 Phone Number: 281.837.2515 Fax Number: 281.837.2515 Contact: BRUCE POTTER	PE ENGINEER Company: JOHNNY CASTLE Address: 1500 ADRIAN DR., SCOTTSDALE, AZ 85257 Phone Number: 480.348.4838 Fax Number: 480.348.4838 Contact: BRUCE POTTER	PROJECT NAME: VERIZON - CINCO RANCH PROJECT AREA: CINCO RANCH, TX DESCRIPTION: WOOD POWER POLE APPROXIMATE ENGINEERING DATE: 2008 CONTACT: JOHNNY CASTLE KEY MAP AREA: 559C	APPLICANT: CROWN CASTLE 1500 ADRIAN DR., SCOTTSDALE, AZ 85257 CONTACT: BRUCE POTTER CODES: 2009 INTERNATIONAL BUILDING CODE (IBC) 2009 INTERNATIONAL ENERGY CONSERVATION CODE (IECC) 2008 NATIONAL ELECTRICAL SAFETY CODE (NESC)
PROJECT MANAGER Company: SHIFT CONSULTING Address: 1500 ADRIAN DR., SCOTTSDALE, AZ 85257 Phone Number: 480.348.4838 Fax Number: 480.348.4838 Contact: BRUCE POTTER		PROJECT DESCRIPTION VERIZON CASTLE ENGINEERS IS PROVIDING A WOOD POWER POLE AND ANTENNA INSTALLATION FOR THE VERIZON CASTLE COMMUNICATIONS SYSTEM FOR THE COMMUNITY OF CINCO RANCH, TEXAS. THE SYSTEM WILL IMPROVE CELLULAR COMMUNICATIONS AND PROVIDE A CELLULAR NETWORK THAT CAN BE UTILIZED SIMULTANEOUSLY BY MULTIPLE MOBILE TELECOMMUNICATIONS DEVICES. A SUBJECT MOBILE CELL COMMUNICATIONS EQUIPMENT AND INSTALLATION OF AN ANTENNA MOUNTED ON WOOD POLES SPECIFICALLY ENGINEERED TO SUPPORT THE PROPOSED VERIZON CASTLE COMMUNICATIONS SYSTEM. THE PROPOSED WOOD POWER POLE AND ANTENNA WILL BE INSTALLED ON THE SOUTHWEST CORNER OF THE VERIZON CASTLE COMMUNICATIONS SYSTEM. THE PROPOSED WOOD POWER POLE AND ANTENNA WILL BE INSTALLED ON THE SOUTHWEST CORNER OF THE VERIZON CASTLE COMMUNICATIONS SYSTEM. THE PROPOSED WOOD POWER POLE AND ANTENNA WILL BE INSTALLED ON THE SOUTHWEST CORNER OF THE VERIZON CASTLE COMMUNICATIONS SYSTEM.				



CROWN CASTLE
 1500 ADRIAN DR.
 HOUSTON, TX 77057
 PH: 480.348.4838

RECORD DRAWING DATE: 4/17/14

RECORD DRAWING CHITING ONLY

SHIFT
 SHIFT CONSULTING, LLC
 1500 ADRIAN DR., SCOTTSDALE, AZ 85257
 PH: 480.348.4838

THIS DRAWING IS COPYRIGHTED AND IS THE SOLE PROPERTY OF THE OWNER. IT IS TO BE USED ONLY FOR THE PROJECT AND LOCATION AND FOR THE INFORMATION CONTAINED HEREIN. NO PART OF THIS DRAWING IS TO BE REPRODUCED OR TRANSMITTED IN ANY FORM OR BY ANY MEANS, ELECTRONIC OR MECHANICAL, WITHOUT THE WRITTEN PERMISSION OF THE OWNER.

RELEASE	SUBMITTAL
11-28-13	1ST CITY SUBMITTAL
12-11-14	CENTERPOINT SUBMITTAL

REVISIONS	NO.	DATE	COMMENT
	1	12/11/13	REVISION FOR CENTERPOINT SUBMITTAL
	2	4/17/14	CENTERPOINT SUBMITTAL

PROJECT NAME: VERIZON - CINCO RANCH

NODE ADDRESS: NODE #CCR-009-01

S. OF FRY RD., E. OF PEEK RD.

HUB AREA: CINCO RANCH, TX

SHIFT JOB NUMBER: 120603

SHEET TITLE: TITLE SHEET

SHEET NUMBER: 1 OF 8

PROJECT DATE: 11/28/2013 12:11:17

SYMBOL	DESCRIPTION
	CENTER LINE
	PROPERTY LINE
	PROPOSED WAY
	FIRE
	GAS
	POWER
	SANITARY SEWER
	STORM DRAIN
	WATER
	LIGHT CIRCUIT POWER

SYMBOL	DESCRIPTION
	REVISION
	KEY NOTE
	DETAIL REFERENCE
	ELEVATION REFERENCE
	SECTION REFERENCE
	ELEVATION MARKER
	PHOTOGRAM REFERENCE
	ANTENNA AZIMUTH
	VIEW NUMBER
	SHEET NUMBER
	SHEET GROUP

SYMBOL	DESCRIPTION
	SCALE 1/8" = 1'-0"

SYMBOL	DESCRIPTION
	NORTH

SYMBOL	DESCRIPTION
	SCALE 1/4" = 1'-0"

SYMBOL	DESCRIPTION
	SCALE 1/2" = 1'-0"

SYMBOL	DESCRIPTION
	SCALE 3/4" = 1'-0"

SYMBOL	DESCRIPTION
	SCALE 1" = 1'-0"

SYMBOL	DESCRIPTION
	SCALE 1 1/2" = 1'-0"

SYMBOL	DESCRIPTION
	SCALE 2" = 1'-0"

SYMBOL	DESCRIPTION
	SCALE 3" = 1'-0"

SYMBOL	DESCRIPTION
	SCALE 4" = 1'-0"

SYMBOL	DESCRIPTION
	SCALE 5" = 1'-0"

SYMBOL	DESCRIPTION
	SCALE 6" = 1'-0"

SYMBOL	DESCRIPTION
	SCALE 8" = 1'-0"

SYMBOL	DESCRIPTION
	SCALE 10" = 1'-0"

SYMBOL	DESCRIPTION
	SCALE 12" = 1'-0"

SYMBOL	DESCRIPTION
	SCALE 15" = 1'-0"

SYMBOL	DESCRIPTION
	SCALE 20" = 1'-0"

SYMBOL	DESCRIPTION
	SCALE 24" = 1'-0"

SYMBOL	DESCRIPTION
	SCALE 30" = 1'-0"

SYMBOL	DESCRIPTION
	SCALE 36" = 1'-0"

SYMBOL	DESCRIPTION
	SCALE 48" = 1'-0"

SYMBOL	DESCRIPTION
	SCALE 60" = 1'-0"

SYMBOL	DESCRIPTION
	SCALE 72" = 1'-0"

SYMBOL	DESCRIPTION
	SCALE 96" = 1'-0"

SYMBOL	DESCRIPTION
	SCALE 120" = 1'-0"

SYMBOL	DESCRIPTION
	SCALE 144" = 1'-0"

SYMBOL	DESCRIPTION
	SCALE 168" = 1'-0"

SYMBOL	DESCRIPTION
	SCALE 192" = 1'-0"

SYMBOL	DESCRIPTION
	SCALE 216" = 1'-0"

SYMBOL	DESCRIPTION
	SCALE 240" = 1'-0"

SYMBOL	DESCRIPTION
	SCALE 264" = 1'-0"

SHIFT

Shift Companies, LLC
7310 E. MONTE VISTA ROAD
SCOTTSDALE, ARIZONA 85257
ph: 480.244.0029
fax: 480.244.0153

THE SOLE PROPERTY OF THE OWNER, IT IS PRODUCED SOLELY FOR USE BY THE OWNER AND ITS AFFILIATES. REPRODUCTION OR USE OF THIS DRAWING AND/OR THE INFORMATION CONTAINED IN IT IS FORBIDDEN WITHOUT THE WRITTEN PERMISSION OF THE OWNER.

RELEASE	
DATE	SUBMITTAL
11-29-13	1ST CITY SUBMITTAL
1-21-14	CENTERPOINT SUBMITTAL
REVISIONS	
NO.	DATE COMMENT
	12.11.13 FHEB CORRECTION
	4.17.14 CENTERPOINT RE-SUBMITTAL

PROJECT NAME
VERIZON - CINCO RANCH

NODE #:CCR-009-01
S. OF FRY RD., E. OF
PEEK RD.

HUB AREA

CINCO RANCH, TX

SHIFT JOB NUMBER

120603
DRAWN BY: HA
CHECKED BY: CM

SHEET TITLE


GENERAL NOTES

SYMBOLS

PAGE

T1.2 2 OF 8

[illegible]



**CROWN
CASTLE**

CROWN CASTLE
1500 ALABAMA DR.
SUITE 200
FARMERS BRANCH, TX 75440
PR-46343-0001

RECORD DOWNSHEET DATE: 11/11/14

SHIFT

SHIF

SHIF Corporation, LLC
1001 WEST 10TH AVE
SUITE 200
DALLAS, TX 75208
PR-46343-0001

THE DOWNSHEET IS GENERATED BY THE SYSTEM. IT IS THE SOLE PROPERTY OF THE OWNER. IT IS NOT TO BE REPRODUCED OR TRANSMITTED IN ANY FORM OR BY ANY MEANS, ELECTRONIC OR MECHANICAL, WITHOUT PERMISSION OF THE OWNER. IT IS FORBIDDEN TO VOUCHER OR OTHERWISE ATTEMPT TO REPRODUCE OR TRANSMIT THE INFORMATION CONTAINED HEREIN WITHOUT THE WRITTEN PERMISSION OF THE OWNER.

RELEASE	
DATE	8/6/2014
11/26/13	1ST QTR SUBMITTAL
12/14/14	CONTRIBUTOR SUBMITTAL
REVISION	
NO.	COMMENTS
11/11/14	REB CORRECTION
12/14	CONTRIBUTOR RELEASED

PRODUCT NAME

VERIZON - CINCO RANCH

PHONE ADDRESS

MODE #:CCR-009-01

S. OF FRY RD. E. OF
PEEK RD.

HUB AREA

CINCO RANCH, TX

SHEET JOB NUMBER

120603

IN HOUSE
DRAWN BY: SA
CHECKED BY: CM

SHEET TITLE

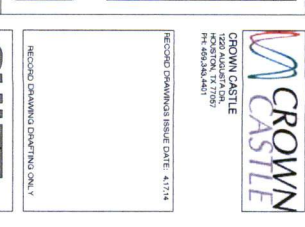
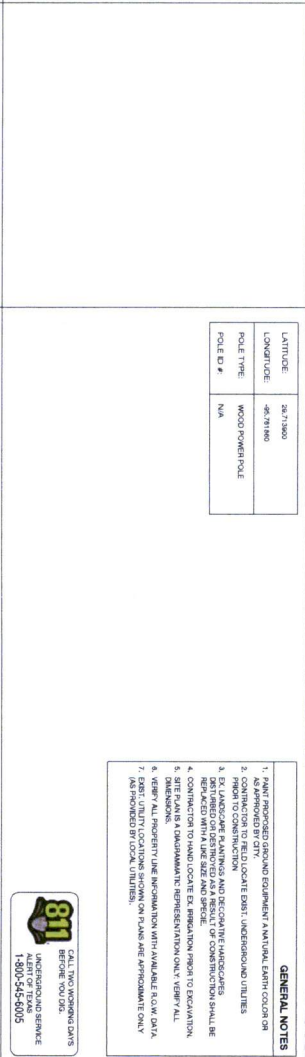
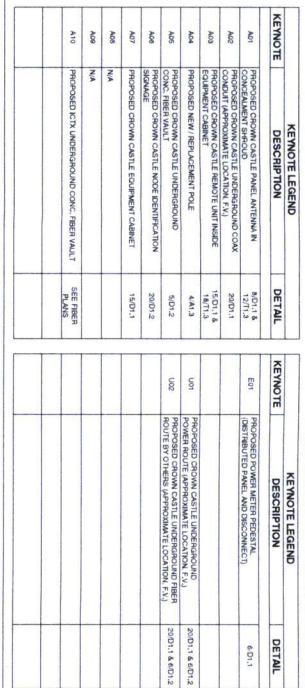
EQUIPMENT
SPECIFICATIONS

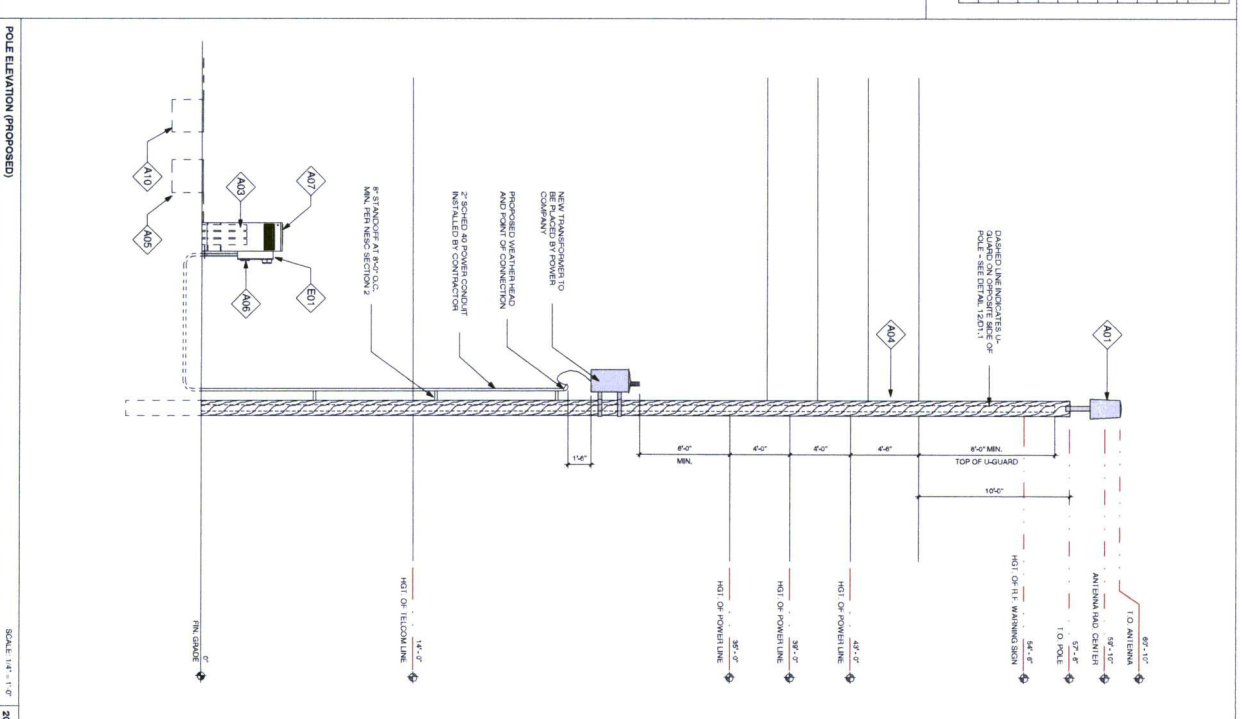
SHEET NUMBER

PAGE

3 OF 8

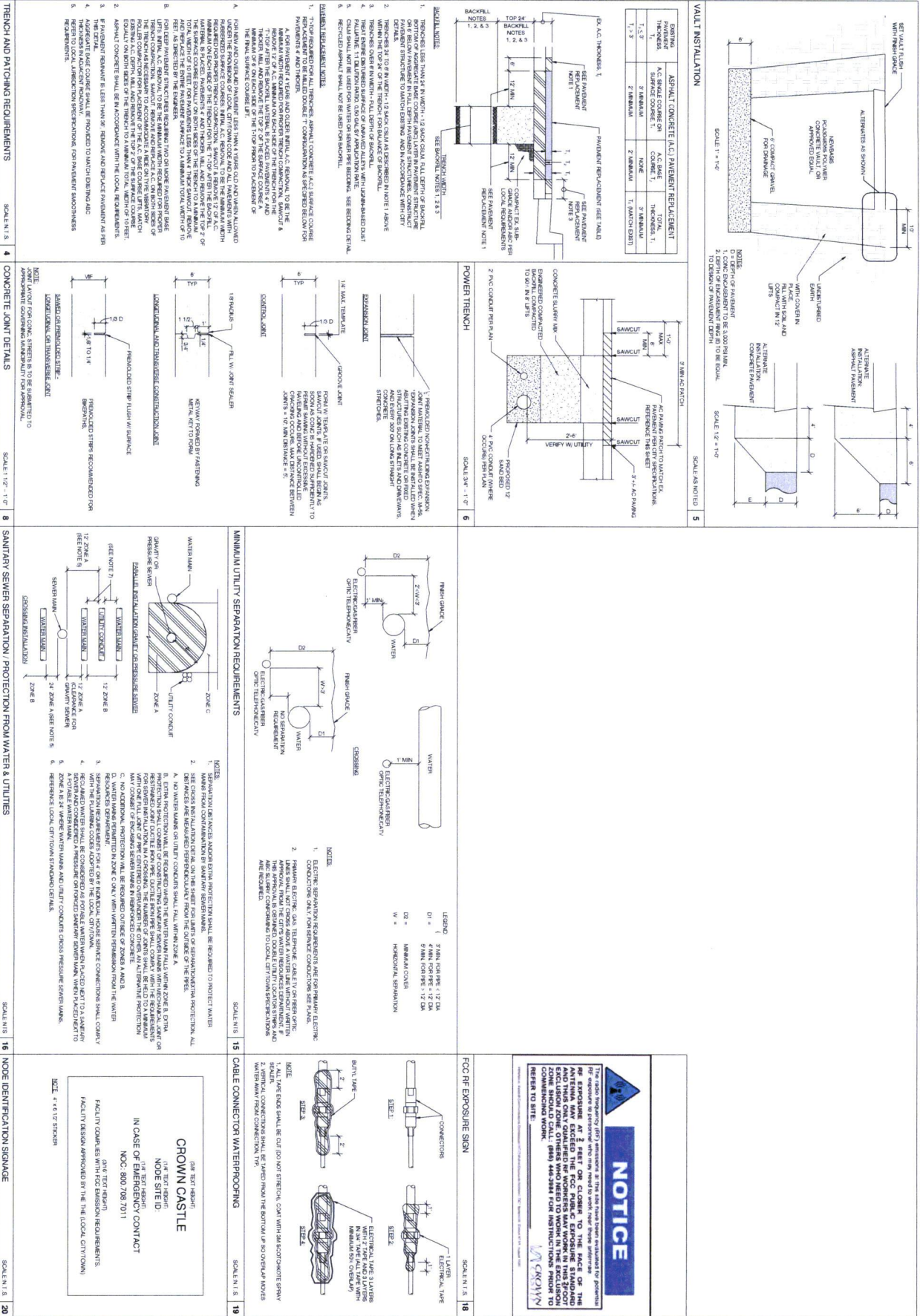
PR-46343-0001 11/24/2014 12:58:11 PM



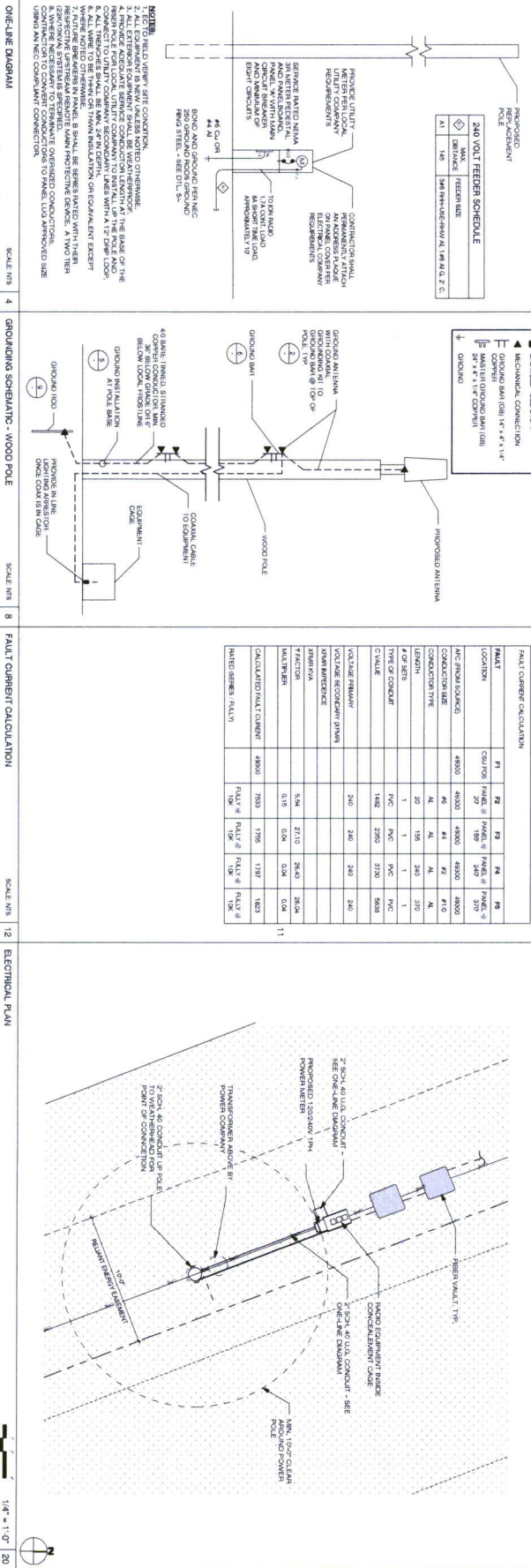
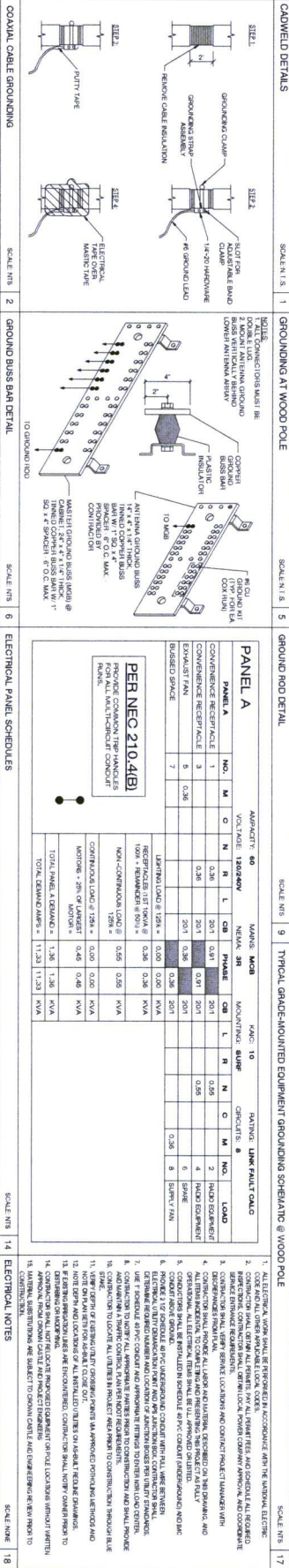




D1.1 6 OF 8

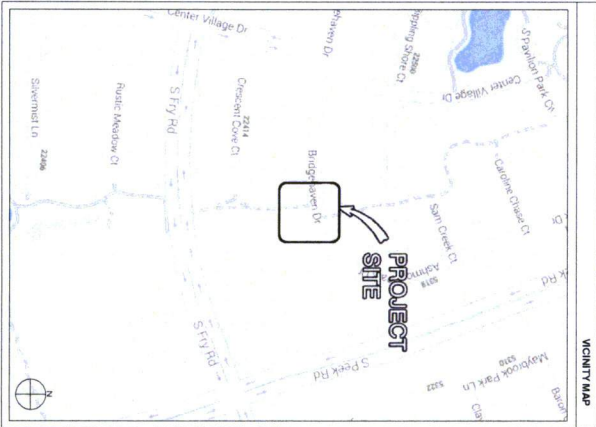


RELEASE		DATE		SUBMITTAL	
11-29-13		1ST CITY SUBMITTAL			
12-11-14		2ND CITY SUBMITTAL			
12-11-14		3RD CITY SUBMITTAL			
12-11-14		4TH CITY SUBMITTAL			
12-11-14		5TH CITY SUBMITTAL			
12-11-14		6TH CITY SUBMITTAL			
12-11-14		7TH CITY SUBMITTAL			
12-11-14		8TH CITY SUBMITTAL			
12-11-14		9TH CITY SUBMITTAL			
12-11-14		10TH CITY SUBMITTAL			
12-11-14		11TH CITY SUBMITTAL			
12-11-14		12TH CITY SUBMITTAL			
12-11-14		13TH CITY SUBMITTAL			
12-11-14		14TH CITY SUBMITTAL			
12-11-14		15TH CITY SUBMITTAL			
12-11-14		16TH CITY SUBMITTAL			
12-11-14		17TH CITY SUBMITTAL			
12-11-14		18TH CITY SUBMITTAL			
12-11-14		19TH CITY SUBMITTAL			
12-11-14		20TH CITY SUBMITTAL			
12-11-14		21TH CITY SUBMITTAL			
12-11-14		22TH CITY SUBMITTAL			
12-11-14		23TH CITY SUBMITTAL			
12-11-14		24TH CITY SUBMITTAL			
12-11-14		25TH CITY SUBMITTAL			
12-11-14		26TH CITY SUBMITTAL			
12-11-14		27TH CITY SUBMITTAL			
12-11-14		28TH CITY SUBMITTAL			
12-11-14		29TH CITY SUBMITTAL			
12-11-14		30TH CITY SUBMITTAL			
12-11-14		31TH CITY SUBMITTAL			
12-11-14		32TH CITY SUBMITTAL			
12-11-14		33TH CITY SUBMITTAL			
12-11-14		34TH CITY SUBMITTAL			
12-11-14		35TH CITY SUBMITTAL			
12-11-14		36TH CITY SUBMITTAL			
12-11-14		37TH CITY SUBMITTAL			
12-11-14		38TH CITY SUBMITTAL			
12-11-14		39TH CITY SUBMITTAL			
12-11-14		40TH CITY SUBMITTAL			
12-11-14		41TH CITY SUBMITTAL			
12-11-14		42TH CITY SUBMITTAL			
12-11-14		43TH CITY SUBMITTAL			
12-11-14		44TH CITY SUBMITTAL			
12-11-14		45TH CITY SUBMITTAL			
12-11-14		46TH CITY SUBMITTAL			
12-11-14		47TH CITY SUBMITTAL			
12-11-14		48TH CITY SUBMITTAL			
12-11-14		49TH CITY SUBMITTAL			
12-11-14		50TH CITY SUBMITTAL			
12-11-14		51TH CITY SUBMITTAL			
12-11-14		52TH CITY SUBMITTAL			
12-11-14		53TH CITY SUBMITTAL			
12-11-14		54TH CITY SUBMITTAL			
12-11-14		55TH CITY SUBMITTAL			
12-11-14		56TH CITY SUBMITTAL			
12-11-14		57TH CITY SUBMITTAL			
12-11-14		58TH CITY SUBMITTAL			
12-11-14		59TH CITY SUBMITTAL			
12-11-14		60TH CITY SUBMITTAL			
12-11-14		61TH CITY SUBMITTAL			
12-11-14		62TH CITY SUBMITTAL			
12-11-14		63TH CITY SUBMITTAL			
12-11-14		64TH CITY SUBMITTAL			
12-11-14		65TH CITY SUBMITTAL			
12-11-14		66TH CITY SUBMITTAL			
12-11-14		67TH CITY SUBMITTAL			
12-11-14		68TH CITY SUBMITTAL			
12-11-14		69TH CITY SUBMITTAL			
12-11-14		70TH CITY SUBMITTAL			
12-11-14		71TH CITY SUBMITTAL			
12-11-14		72TH CITY SUBMITTAL			
12-11-14		73TH CITY SUBMITTAL			
12-11-14		74TH CITY SUBMITTAL			
12-11-14		75TH CITY SUBMITTAL			
12-11-14		76TH CITY SUBMITTAL			
12-11-14		77TH CITY SUBMITTAL			
12-11-14		78TH CITY SUBMITTAL			
12-11-14		79TH CITY SUBMITTAL			
12-11-14		80TH CITY SUBMITTAL			
12-11-14		81TH CITY SUBMITTAL			
12-11-14		82TH CITY SUBMITTAL			
12-11-14		83TH CITY SUBMITTAL			
12-11-14		84TH CITY SUBMITTAL			
12-11-14		85TH CITY SUBMITTAL			
12-11-14		86TH CITY SUBMITTAL			
12-11-14		87TH CITY SUBMITTAL			
12-11-14		88TH CITY SUBMITTAL			
12-11-14		89TH CITY SUBMITTAL			
12-11-14		90TH CITY SUBMITTAL			
12-11-14		91TH CITY SUBMITTAL			
12-11-14		92TH CITY SUBMITTAL			
12-11-14		93TH CITY SUBMITTAL			
12-11-14		94TH CITY SUBMITTAL			
12-11-14		95TH CITY SUBMITTAL			
12-11-14		96TH CITY SUBMITTAL			
12-11-14		97TH CITY SUBMITTAL			
12-11-14		98TH CITY SUBMITTAL			
12-11-14		99TH CITY SUBMITTAL			
12-11-14		100TH CITY SUBMITTAL			





PROJECT NAME: VERIZON - CINCO RANCH
PROJECT ADDRESS: BRIDGEHAVEN DR., E. OF CENTER VILLAGE DR.
PROJECT TYPE: WOOD POWER POLE
HUB AREA: CINCO RANCH, TX
NODE #(s): CCR-004-01
COORDINATES: LAT: 29.714380, LONG: -95.766700



PROJECT TEAM	
ARCHITECT Company: SHIFT CONSULTING Address: 10000 N. CENTRAL AVE. HOUSTON, TX 77060 Phone Number: 281-443-4433 Fax Number: 281-443-4433 Contact: BRUCE POTTER	STRUCTURAL Company: WDC Address: 10000 N. CENTRAL AVE. HOUSTON, TX 77060 Phone Number: 281-443-4433 Fax Number: 281-443-4433 Contact: BRUCE POTTER
RF ENGINEER Company: CINCO CASTLE Address: 10000 N. CENTRAL AVE. HOUSTON, TX 77060 Phone Number: 281-443-4433 Fax Number: 281-443-4433 Contact: BRUCE POTTER	
PROJECT MANAGER Company: CINCO CASTLE Address: 10000 N. CENTRAL AVE. HOUSTON, TX 77060 Phone Number: 281-443-4433 Fax Number: 281-443-4433 Contact: BRUCE POTTER	

PROJECT SUMMARY	
PROJECT NAME VERIZON - CINCO RANCH	APPLICANT VERIZON - CINCO RANCH
PROJECT AREA WOOD POWER POLE	PROJECT AREA WOOD POWER POLE
APPROVALS VERIZON - CINCO RANCH CINCO CASTLE SHIFT CONSULTING	COORDINATES LAT: 29.714380 LONG: -95.766700
GENERAL CONTRACTOR BRUCE POTTER	GENERAL CONTRACTOR BRUCE POTTER
PROJECT MANAGER BRUCE POTTER	PROJECT MANAGER BRUCE POTTER

Sheet #	Sheet Description	Page
1	TITLE SHEET	1
2	GENERAL NOTES, DIMENSIONS AND SYMBOLS	2
3	STRUCTURAL PLAN	3
4	WIRE PLAN, EQUIPMENT AND ANTENNA PLAN	4
5	POLE ELEVATION AND PROPOSED	5
6	CONSTRUCTION OF TALLS	6
7	ELECTRICAL, WIRE TIES AND NOTES, GROUNDING, TALLS AND TALLS	7
8		8

RELEASE		
DATE	SUBMITTAL	
1-24-13	CENTERPOINT SUBMITTAL	
REVISIONS		
NO.	DATE	COMMENTS
1	12/11/14	FIBER CONNECTION
2	12/11/14	CENTERPOINT SUBMITTAL
PROJECT NAME VERIZON - CINCO RANCH		
HUB AREA CINCO RANCH, TX		
NODE # CCR-004-01		
PROJECT ADDRESS BRIDGEHAVEN DR., E. OF CENTER VILLAGE DR.		
PROJECT MANAGER BRUCE POTTER		
PROJECT TYPE WOOD POWER POLE		
PROJECT AREA CINCO RANCH, TX		
PROJECT COORDINATES LAT: 29.714380 LONG: -95.766700		
PROJECT TEAM		
ARCHITECT SHIFT CONSULTING		
STRUCTURAL WDC		
RF ENGINEER CINCO CASTLE		
PROJECT MANAGER CINCO CASTLE		
GENERAL CONTRACTOR BRUCE POTTER		
PROJECT MANAGER BRUCE POTTER		
PROJECT DESCRIPTION A SUBJECT NODE WILL BE CONSTRUCTED OF SHEDDING AND INSTALLATION OF AN ANTENNA MOUNTED ON WOOD POLES SPECIFICALLY ENGINEERED TO SUPPORT THE PROPOSED VERIZON EQUIPMENT. THE NODE WILL BE CONSTRUCTED TO MAKE CONSTRUCTION EASIER ON THE GROUND ALONG WITH A SEPARATE INTERESTED.		
PROJECT SUMMARY		
PROJECT NAME VERIZON - CINCO RANCH		
PROJECT AREA WOOD POWER POLE		
APPROVALS VERIZON - CINCO RANCH CINCO CASTLE SHIFT CONSULTING		
COORDINATES LAT: 29.714380 LONG: -95.766700		
GENERAL CONTRACTOR BRUCE POTTER		
PROJECT MANAGER BRUCE POTTER		
PROJECT TEAM		
ARCHITECT SHIFT CONSULTING		
STRUCTURAL WDC		
RF ENGINEER CINCO CASTLE		
PROJECT MANAGER CINCO CASTLE		
GENERAL CONTRACTOR BRUCE POTTER		
PROJECT MANAGER BRUCE POTTER		

ABBREVIATIONS AND SYMBOLS	
---	CENTER LINE
---	PROPERTY LINE
---	REPORT-ON-WAY
---	RISER
---	GAS
---	POWER
---	SANITARY SEWER
---	STORM DRAIN
---	WATER
---	UPPER CIRCULAR POWER

ABBREVIATIONS AND SYMBOLS	
	REVISION
	KEY NOTE
	CIRCLE REFERENCE
	ELEVATION REFERENCE
	SECTION REFERENCE
	ELEVATION MARKER
	PHOTODUPLICATION REFERENCE
	ANTENNA AZIMUTH
	VIEW NUMBER
	SHEET NUMBER
	SHEET GROUP

ABBREVIATIONS AND SYMBOLS	
---	CENTER LINE
---	PROPERTY LINE
---	REPORT-ON-WAY
---	RISER
---	GAS
---	POWER
---	SANITARY SEWER
---	STORM DRAIN
---	WATER
---	UPPER CIRCULAR POWER

ABBREVIATIONS AND SYMBOLS	
	REVISION
	KEY NOTE
	CIRCLE REFERENCE
	ELEVATION REFERENCE
	SECTION REFERENCE
	ELEVATION MARKER
	PHOTODUPLICATION REFERENCE
	ANTENNA AZIMUTH
	VIEW NUMBER
	SHEET NUMBER
	SHEET GROUP

ABBREVIATIONS AND SYMBOLS	
---	CENTER LINE
---	PROPERTY LINE
---	REPORT-ON-WAY
---	RISER
---	GAS
---	POWER
---	SANITARY SEWER
---	STORM DRAIN
---	WATER
---	UPPER CIRCULAR POWER

ABBREVIATIONS AND SYMBOLS	
	REVISION
	KEY NOTE
	CIRCLE REFERENCE
	ELEVATION REFERENCE
	SECTION REFERENCE
	ELEVATION MARKER
	PHOTODUPLICATION REFERENCE
	ANTENNA AZIMUTH
	VIEW NUMBER
	SHEET NUMBER
	SHEET GROUP

ABBREVIATIONS AND SYMBOLS	
---	CENTER LINE
---	PROPERTY LINE
---	REPORT-ON-WAY
---	RISER
---	GAS
---	POWER
---	SANITARY SEWER
---	STORM DRAIN
---	WATER
---	UPPER CIRCULAR POWER

ABBREVIATIONS AND SYMBOLS	
	REVISION
	KEY NOTE
	CIRCLE REFERENCE
	ELEVATION REFERENCE
	SECTION REFERENCE
	ELEVATION MARKER
	PHOTODUPLICATION REFERENCE
	ANTENNA AZIMUTH
	VIEW NUMBER
	SHEET NUMBER
	SHEET GROUP


ABBREVIATIONS AND SYMBOLS	
---	CENTER LINE
---	PROPERTY LINE
---	REPORT-ON-WAY
---	RISER
---	GAS
---	POWER
---	SANITARY SEWER
---	STORM DRAIN
---	WATER
---	UPPER CIRCULAR POWER

ABBREVIATIONS AND SYMBOLS	
	REVISION
	KEY NOTE
	CIRCLE REFERENCE
	ELEVATION REFERENCE
	SECTION REFERENCE
	ELEVATION MARKER
	PHOTODUPLICATION REFERENCE
	ANTENNA AZIMUTH
	VIEW NUMBER
	SHEET NUMBER
	SHEET GROUP

ABBREVIATIONS AND SYMBOLS	
---	CENTER LINE
---	PROPERTY LINE
---	REPORT-ON-WAY
---	RISER
---	GAS
---	POWER
---	SANITARY SEWER
---	STORM DRAIN
---	WATER
---	UPPER CIRCULAR POWER

ABBREVIATIONS AND SYMBOLS	
	REVISION
	KEY NOTE
	CIRCLE REFERENCE
	ELEVATION REFERENCE
	SECTION REFERENCE
	ELEVATION MARKER
	PHOTODUPLICATION REFERENCE
	ANTENNA AZIMUTH
	VIEW NUMBER
	SHEET NUMBER
	SHEET GROUP

ABBREVIATIONS AND SYMBOLS	
---------------------------	--



Shift Companies, LLC
7331 E. MONTE VISTA ROAD
SCOTTSDALE, ARIZONA 85251
PH: 480.244.0829
FAX: 480.244.0163

THIS DRAWING IS COPYRIGHTED AND IS THE SOLE PROPERTY OF THE OWNER. IT IS PRODUCED SOLELY FOR USE BY THE OWNER AND ITS AFFILIATES. REPRODUCTION OR USE OF THIS DRAWING AND/OR THE INFORMATION CONTAINED IN IT IS FORBIDDEN WITHOUT THE WRITTEN PERMISSION OF THE OWNER.

REVISIONS		
NO.	DATE	COMMENT
	12.11.13	FIBER COORDINATION
	4.17.14	CENTERPOINT RESUBMITAL

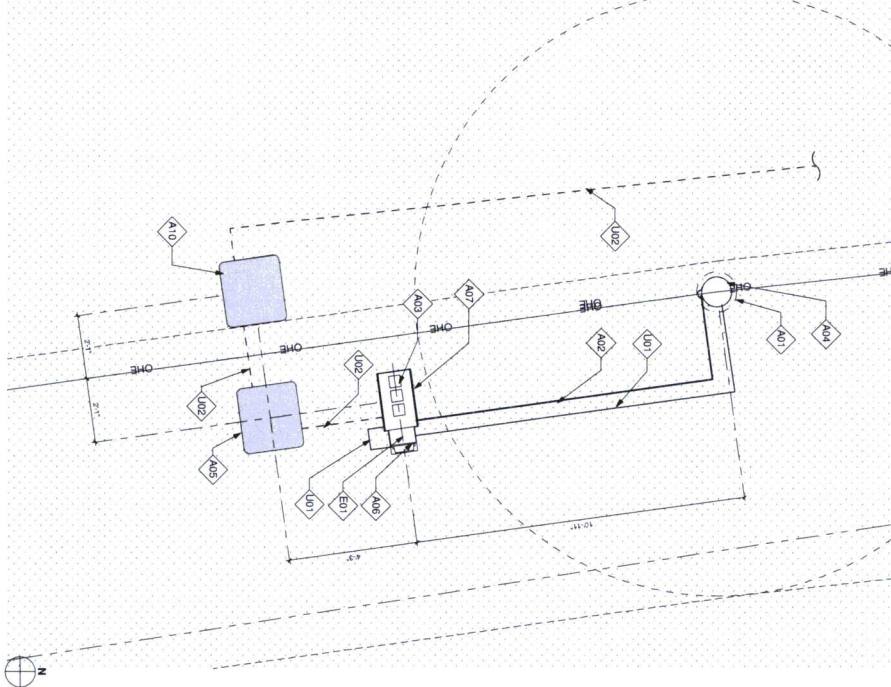
BRIDGEHAVEN DR., E.
OF CENTER VILLAGE DR.

SHEET TITLE

GENERAL NOTES
ABBREVIATIONS AND
SYMBOLS

T1.2 2 OF 8

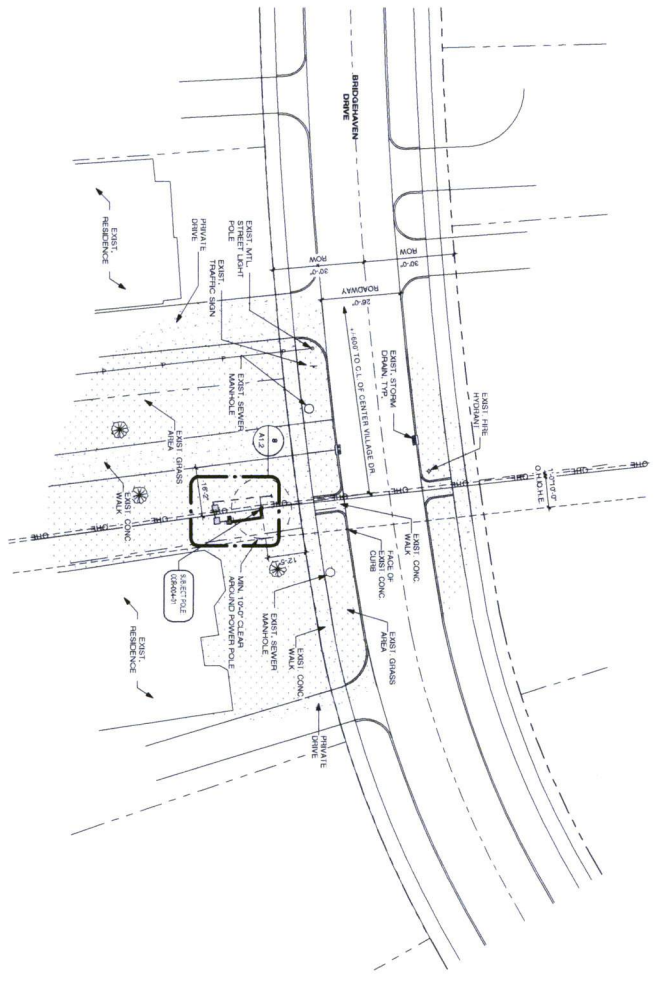
KEYNOTE LEGEND		KEYNOTE LEGEND	
KEYNOTE	DESCRIPTION	KEYNOTE	DESCRIPTION
A01	PROPOSED CROWN CASTLE PANEL WITH MAIN N	E01	PROPOSED POWER WITH RECEPT
A02	CONCRETE FOUNDATION FOR CROWN CASTLE	E02	PROPOSED POWER WITH RECEPT
A03	PROPOSED CROWN CASTLE RECEPT UNIT INSIDE	E03	PROPOSED POWER WITH RECEPT
A04	PROPOSED NEW / REPLACEMENT POLE	E04	PROPOSED POWER WITH RECEPT
A05	PROPOSED CROWN CASTLE UNDERGROUND	E05	PROPOSED POWER WITH RECEPT
A06	CONC. REIN. WALL / CONC. EXCAVATION	E06	PROPOSED POWER WITH RECEPT
A07	PROPOSED CROWN CASTLE EQUIPMENT CABINET	E07	PROPOSED POWER WITH RECEPT
A08	NA	E08	PROPOSED POWER WITH RECEPT
A09	NA	E09	PROPOSED POWER WITH RECEPT
A10	PROPOSED 8" DIA. UNDERGROUND CONC. REIN. WALL	E10	PROPOSED POWER WITH RECEPT



NOTES:
1. ANY DAMAGE TO EXISTING UTILITIES, CURBS, SIDEWALKS AND ROADWAYS
2. EXISTING UTILITIES SHOWN IN CONSTRUCTION TO BE REPLACED BY
SAME SPECIES.

LATITUDE	30.14400
LONGITUDE	-95.98400
POLE TYPE	WOOD POWER POLE
POLE ID #	NA

- GENERAL NOTES**
1. ANY DAMAGE TO EXISTING UTILITIES, CURBS, SIDEWALKS AND ROADWAYS
 2. EXISTING UTILITIES SHOWN IN CONSTRUCTION TO BE REPLACED BY SAME SPECIES.
 3. ANY DAMAGE TO EXISTING UTILITIES, CURBS, SIDEWALKS AND ROADWAYS
 4. EXISTING UTILITIES SHOWN IN CONSTRUCTION TO BE REPLACED BY SAME SPECIES.
 5. ANY DAMAGE TO EXISTING UTILITIES, CURBS, SIDEWALKS AND ROADWAYS
 6. EXISTING UTILITIES SHOWN IN CONSTRUCTION TO BE REPLACED BY SAME SPECIES.
 7. ANY DAMAGE TO EXISTING UTILITIES, CURBS, SIDEWALKS AND ROADWAYS
 8. EXISTING UTILITIES SHOWN IN CONSTRUCTION TO BE REPLACED BY SAME SPECIES.



SHIFT

SHIFT CORP., LLC
11111 NORTH CENTRAL
SUITE 100
DALLAS, TEXAS 75243
PH: 469-241-4000
FAX: 469-241-4001

CROWN CASTLE

11111 NORTH CENTRAL
SUITE 100
DALLAS, TEXAS 75243
PH: 469-241-4000
FAX: 469-241-4001

BRIDGEVIEW DR. E. OF CENTER VILLAGE DR.

BRIDGEVIEW DR. E. OF CENTER VILLAGE DR.

PROJECT NAME

VERIZON - CINCO RANCH

PROJECT ADDRESS

BRIDGEVIEW DR. E. OF CENTER VILLAGE DR.

PROJECT NUMBER

CCR-004-01

PROJECT DATE

12/11/13

PROJECT DRAWN BY

12/11/13

PROJECT CHECKED BY

12/11/13

PROJECT SCALE

1" = 20'-0"

PROJECT SHEET

1 OF 8

PROJECT SHEET

4 OF 8

PROJECT SHEET

1 OF 8

PROJECT SHEET

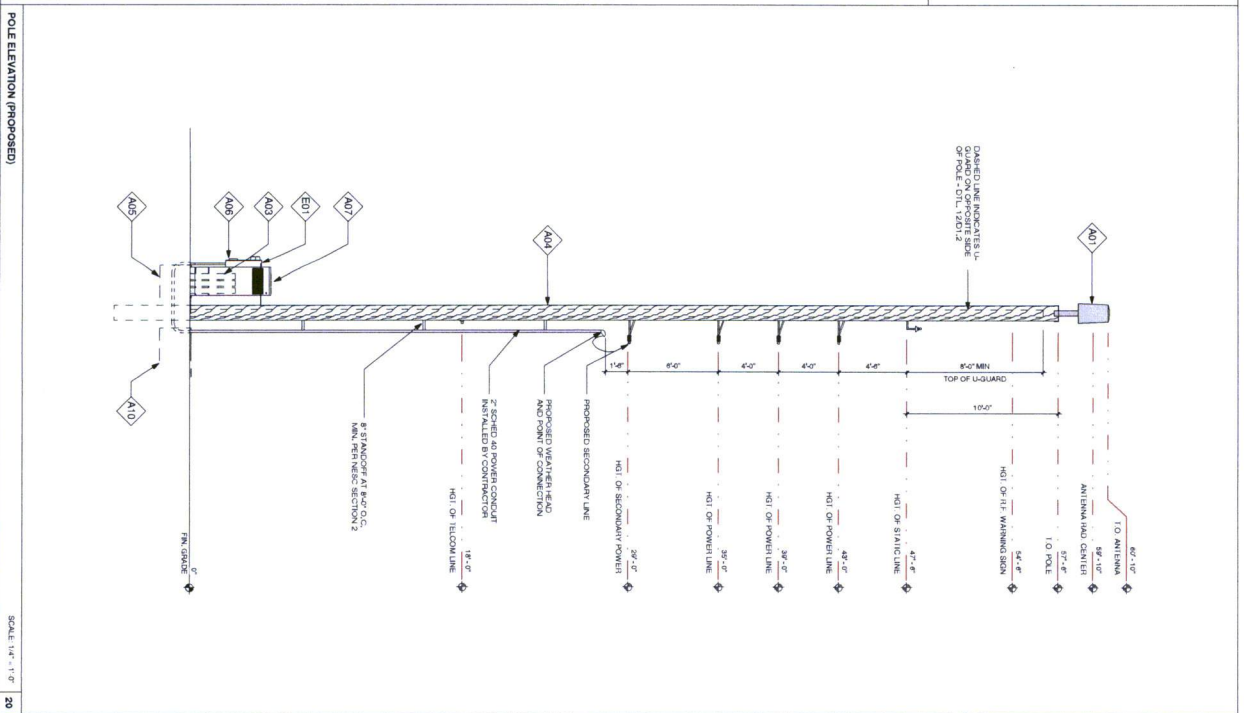
4 OF 8


PROJECT SHEET

1 OF 8

PROJECT SHEET

4 OF 8






CROWN CASTLE
12500 ALABAMA DRIVE
DALLAS, TEXAS 75244
TEL: 469-634-4401

RECORD DRAWMAN'S ISSUE DATE: 4/27/14

RECORD DRAWMAN'S DRAWING ONE, V



SHIFT

SHIFT COMMERCIAL, LLC
15151 COUNTRY CLUB DRIVE
SUITE 100
DALLAS, TEXAS 75244
TEL: 469-344-4401

THE DRAWING IS CONSIDERED VOID AND IS NOT VALID UNLESS SIGNED BY THE OWNER. IT IS THE SOLE PROPERTY OF THE OWNER. IT IS CONSIDERED VOID IF ANY PART OF THE DRAWING IS REPRODUCED OR COPIED BY THE OWNER OR ANY OTHER PARTY WITHOUT THE WRITTEN PERMISSION OF THE DRAWMAN.

RELEASE		
DATE	SUBMITTAL	
11-28-13	1ST CITY SUBMITTAL	
1-24-15	GENERAL SUBMITTAL	
REVISIONS		
NO.	DATE	COMMENTS
1	12-11-13	FINAL COORDINATION
2	4-17-14	GENERALIST REVISIONS

PROJECT NAME

VERIZON - CINCO RANCH

MODE #CCR-004-01

BRIDGEHAVEN DR., E. OF CENTER VILLAGE DR.

MODE ACCESS

NO. 1

HUB AREA

CINCO RANCH, TX

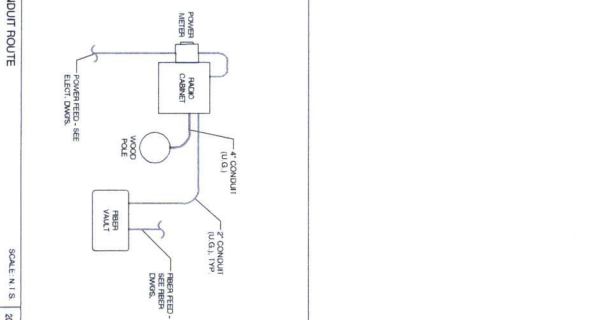
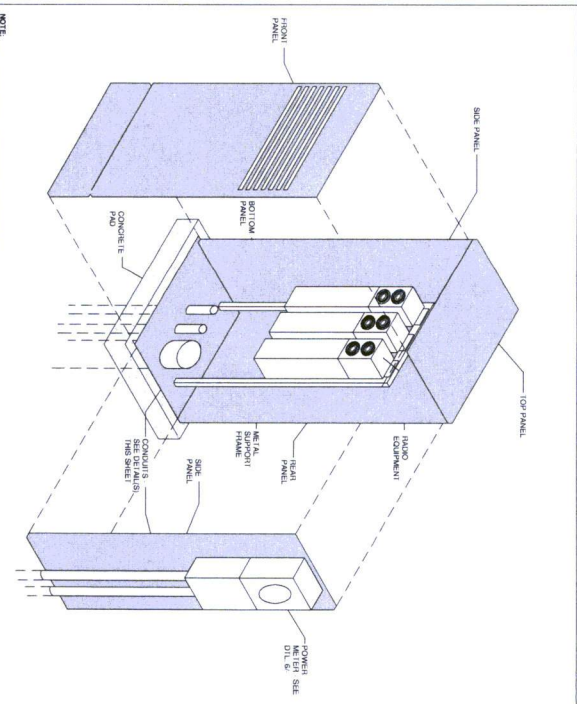
SHIFT JOB NUMBER	IN HOUSE
120603	DESIGN BY: RA CHECKED BY: CM

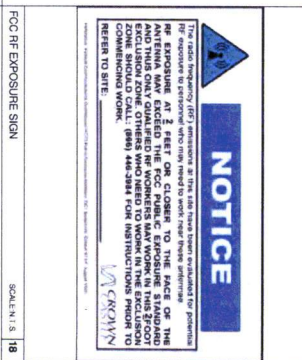
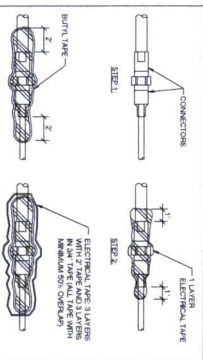
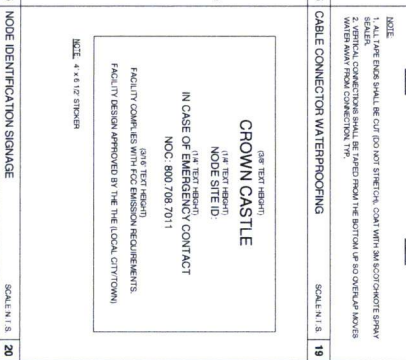
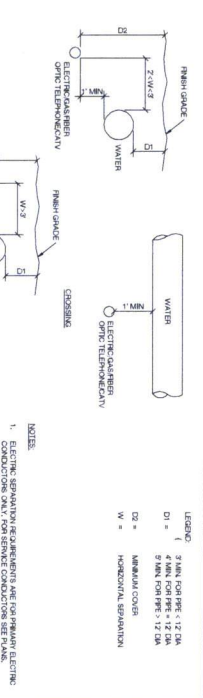
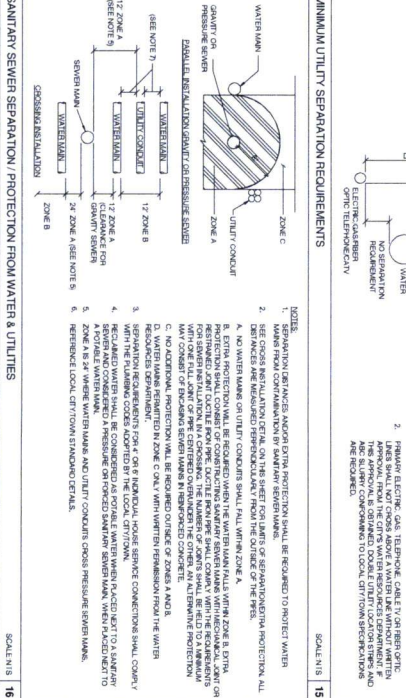
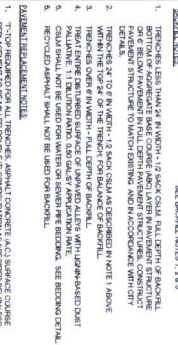
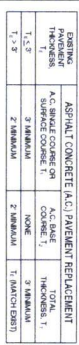
SHEET TITLE

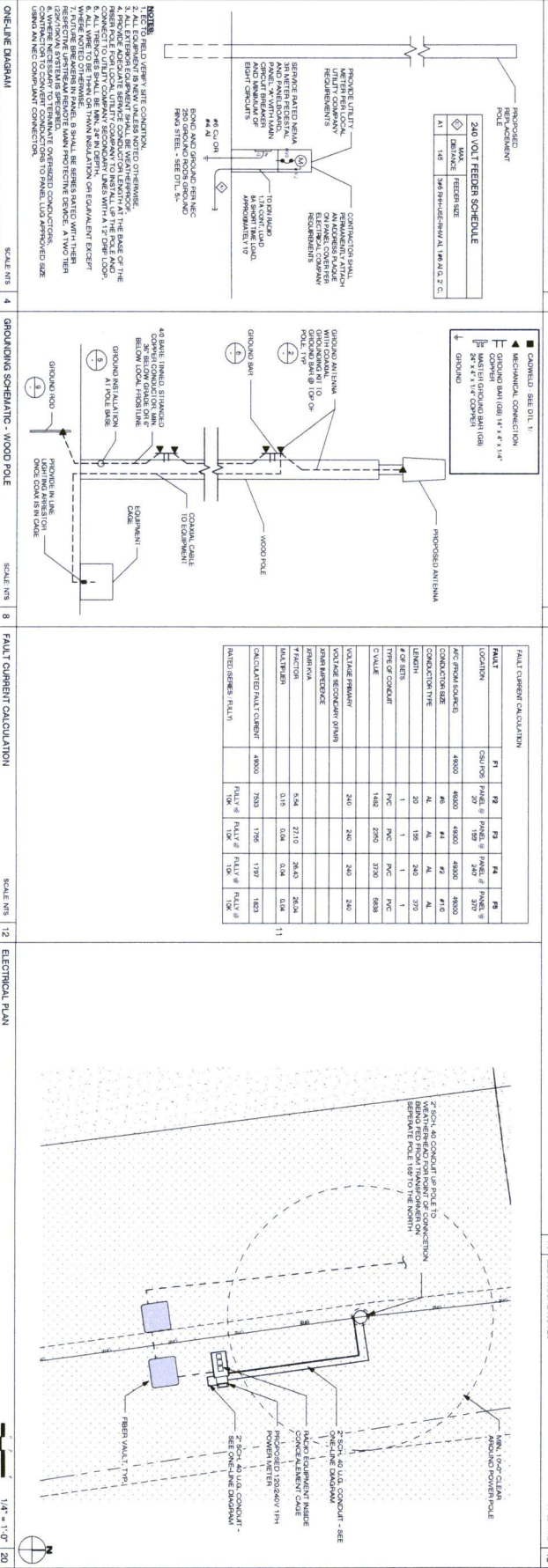
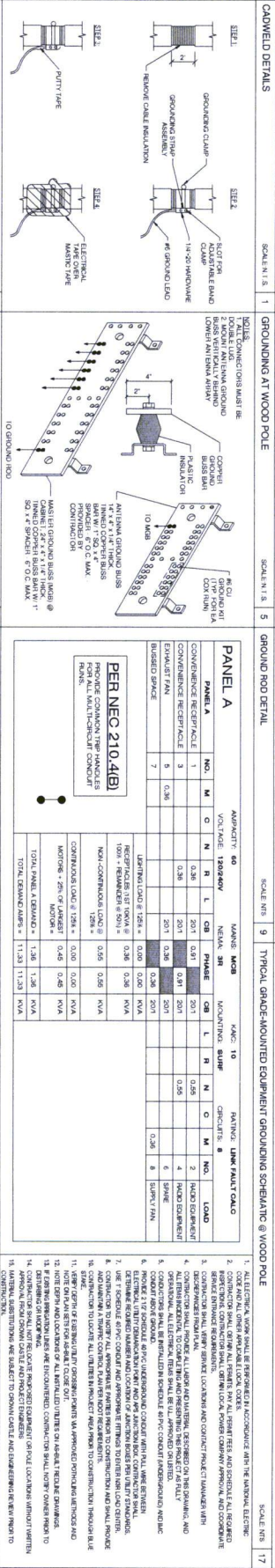
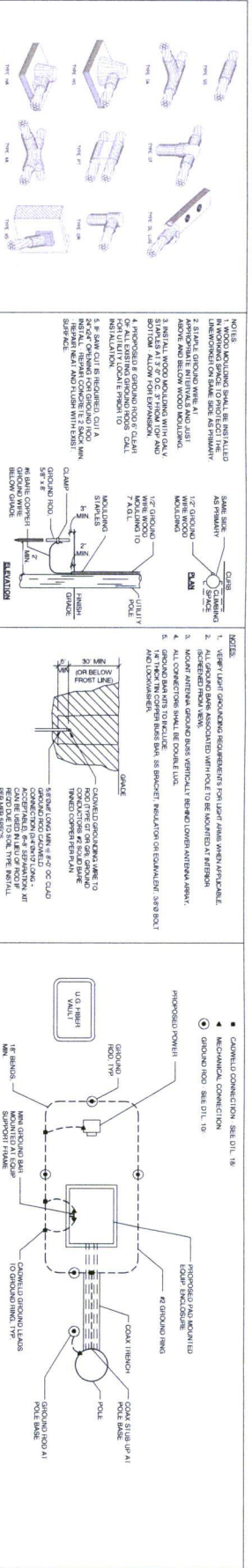
POLE ELEVATION,
PROPOSED

SHEET NUMBER	PAGE
3	5 OF 8

PLOT SCALE: 1" = 40'-0" @ 12.8" X 17.7"







SHIFT

SHIFT COMPANY, LLC
10000 W. 10TH STREET
SUITE 100
DALLAS, TEXAS 75243

THIS DRAWING IS COPYRIGHTED AND IS THE PROPERTY OF SHIFT COMPANY, LLC. NO PART OF THIS DRAWING IS TO BE REPRODUCED OR TRANSMITTED IN ANY FORM OR BY ANY MEANS, ELECTRONIC OR MECHANICAL, WITHOUT PERMISSION OF THE OWNER.

CROWN CASTLE

1200 ALBUQUERQUE BLVD.
HOUSTON, TX 77059
713.261.1000

RECORD DRAWING ISSUE DATE: 4/11/14

PROJECT NAME

VERBON - CINCO RANCH

PROJECT ADDRESS

BRIDGEHAVEN DR. E
OF CENTER VILLAGE DR.

PROJECT NUMBER

CCR-004-01

PROJECT DATE

12/11/13

PROJECT LOCATION

12/11/13

PROJECT STATUS

12/11/13

PROJECT NUMBER

120603

PROJECT DATE

12/11/13

PROJECT LOCATION

12/11/13

PROJECT STATUS

12/11/13

PROJECT NUMBER

120603

PROJECT DATE

12/11/13

PROJECT LOCATION

12/11/13

PROJECT STATUS

12/11/13

PROJECT NUMBER

120603

PROJECT DATE

12/11/13

PROJECT LOCATION

12/11/13

PROJECT STATUS

12/11/13