

**REVIEW BY FORT BEND COUNTY
COMMISSIONERS COURT**

**Fort Bend County
Engineering Department**
301 Jackson Suite 401
Richmond, Texas 77469
281.633.7500
Permits@fortbendcountytexas.gov

☒ Right of Way Permit
☐ Commercial Driveway Permit
Permit No: 2017-12025

Applicant: PS Light Wave, Inc.

Job Location Site: Sugar Land Howell Road, Houston, TX 77083

Bond No. **Date of Bond:** 12/13/2016 **Amount:** \$50,000.00

The above applicant came to make use of certain Fort Bend County property subject to, "The Order Regulating the Laying, Construction, Maintenance, and Repair of Buried Cables, Conduits, and Pole Lines, In, Under, Across or Along Roads, Streets, Highways, and Drainage Ditches in Fort Bend County, Texas, Under the Jurisdiction of the Commissioners Court of Fort Bend County, Texas," as passed by the Commissioners Court of Fort Bend County, Texas, of the Minutes of the Commissioners Court of Fort Bend County, Texas, to the extent that such order is not inconsistent with Chapter 181, Vernon's Texas Statutes and Codes Annotated.

Notes:

1. Evidence of review by the Commissioners Court must be kept on the job site and failure to do so constitutes grounds for job shutdown.
2. Written notices are required:
 - a. 48 hours in advance of construction start up, and
 - b. When construction is completed and ready for final inspection, submit notification to Permit Administrator thru MyGovernmentOnline.org portal.
3. This permit expires one (1) year from date of permit if construction has not commenced.

On this 23rd day of May, 2017, Upon Motion of Commissioner Mayer, seconded by Commissioner Morales, duly put and carried, it is ORDERED, ADJUDGED AND DECREED that said notice of said above purpose is hereby acknowledged by the Commissioners Court of Fort Bend County, Texas, and that said notice be placed on record according to the regulation order thereof.

Signature

Presented to Commissioners Court and approved.

By:

Charles O. Ay
for County Engineer

Date Recorded 5-30-2017 Comm. Court No. 95

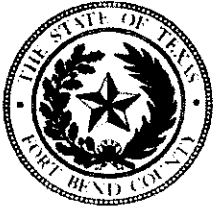
By:

Drainage District Engineer/Manager

Clerk of Commissioners Court

By:

Deputy



**PERMIT APPLICATION REVIEW FORM FOR
CABLE, CONDUIT, AND POLE LINE ACTIVITY
IN FORT BEND COUNTY**

**Fort Bend County
Engineering Department**
301 Jackson Suite 401
Richmond, Texas 77469
281.633.7500
Permits@fortbendcountytexas.gov

- ☒ Right of Way Permit
☐ Commercial Driveway Permit

Permit No: 2017-12025

The following "Notice of Proposed Cable, Conduit, and/or Pole Line activity in Fort Bend County" and accompanying attachments have been reviewed and the notice conforms to appropriate regulations set by Commissioner's Court of Fort Bend County, Texas.

(1) COMPLETE APPLICATION FORM:

- ☒ a. Name of road, street, and/or drainage ditch affected.
☒ b. Vicinity map showing course of directions
☒ c. Plans and specifications

(2) BOND:

- ☐ County Attorney, approval when applicable.
- ☒ Perpetual bond currently posted. Bond No: Amount: \$50,000.00
- ☐ Performance bond submitted. Bond No: Amount:
- ☐ Cashier's Check Check No: Amount:

(3) DRAINAGE DISTRICT APPROVAL (WHEN APPLICABLE):

Drainage District Approval

Date

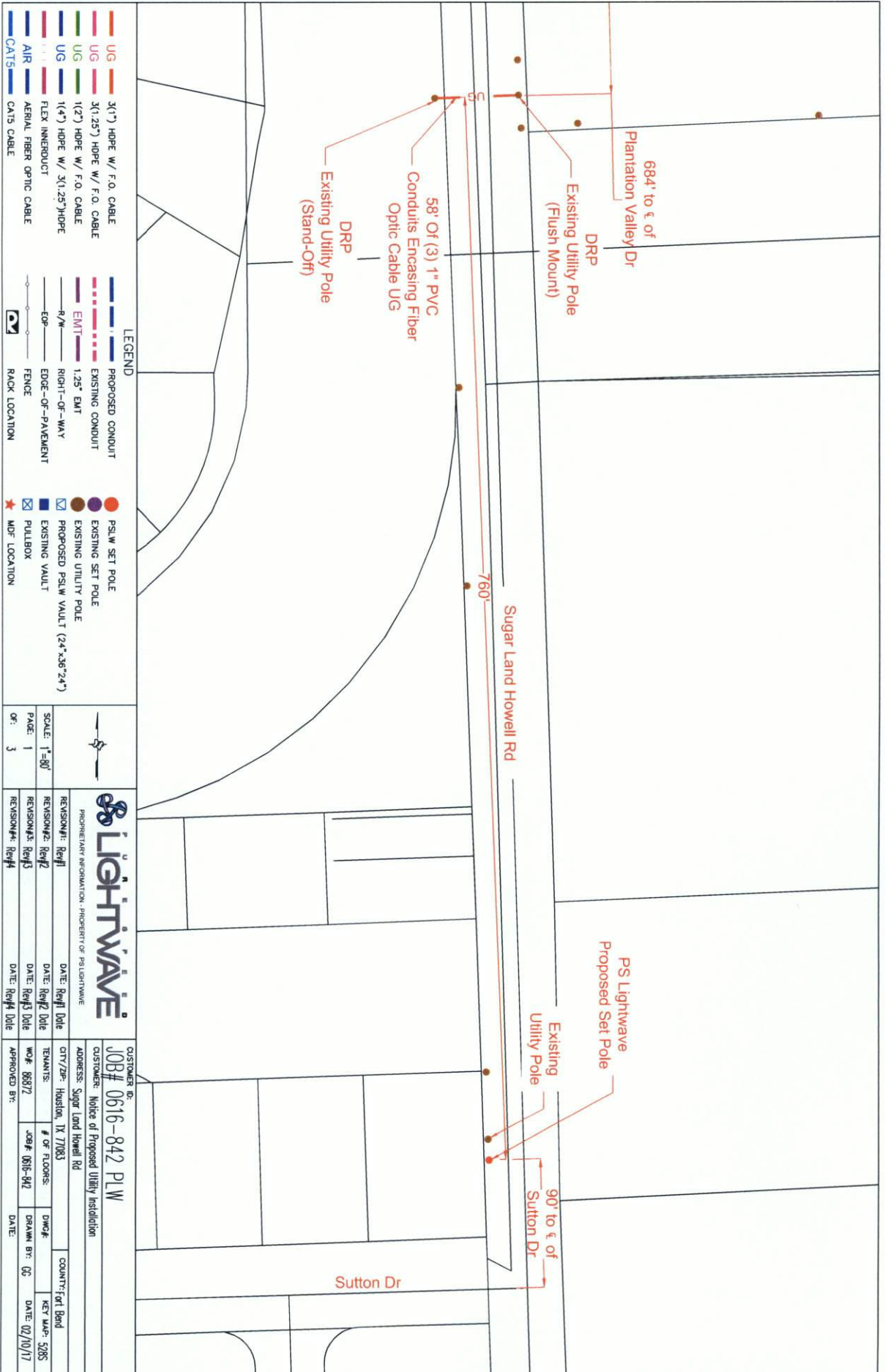
We have reviewed this project and agree it meets minimum requirements.

Charly O. Ay

Permit Administrator

5/15/17

Date

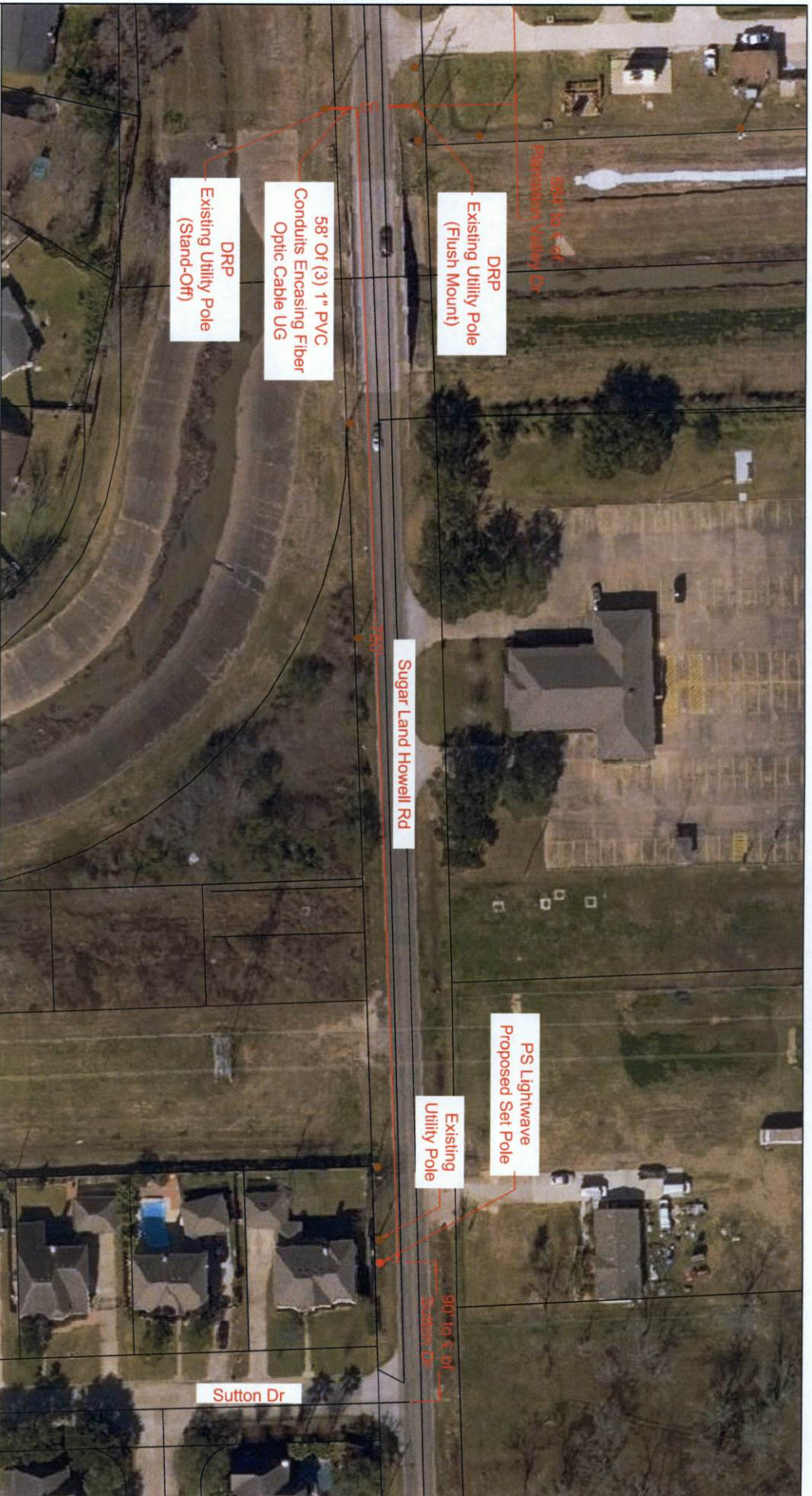


UG	3(1") HOPE W/ F.O. CABLE	PROPOSED CONDUIT	PSLW SET POLE
UG	3(1.25") HOPE W/ F.O. CABLE	EXISTING CONDUIT	EXISTING SET POLE
UG	1(2") HOPE W/ F.O. CABLE	1.25" EMT	EXISTING UTILITY POLE
UG	1(4") HOPE W/ 3(1.25") HOPE	R/W	PROPOSED PSLW VAULT (24"x36"x24")
UG	FLEX INNERDUCT	EDGE-OF-PAVEMENT	EXISTING VAULT
AIR	AERIAL FIBER OPTIC CABLE	FENCE	PULLBOX
CATS	CATS CABLE	RACK LOCATION	MDF LOCATION

PROPRIETARY INFORMATION - PROPERTY OF PS LIGHTWAVE

REVISION#1: Rev1	DATE: Rev1 Date	CITY/ZIP: Houston, TX 77063	COUNTRY: Fort Bend
REVISION#2: Rev2	DATE: Rev2 Date	WOL# 88872	DWG#
REVISION#3: Rev3	DATE: Rev3 Date	JOB# 0616-942	DRAWN BY: GC
REVISION#4: Rev4	DATE: Rev4 Date	APPROVED BY:	DATE: 02/10/17

CUSTOMER ID:	JOB# 0616-842 PLW
CUSTOMER:	Notice of Proposed Utility Installation
ADDRESS:	Sugar Land Howell Rd
TENANTS:	
# OF FLOORS:	
DWG#:	
DRAWN BY:	GC
DATE:	02/10/17



LEGEND

UG	3(1") HOPE W/ F.O. CABLE	PROPOSED CONDUIT	PSLW SET POLE
UG	3(1.25") HOPE W/ F.O. CABLE	EXISTING CONDUIT	EXISTING SET POLE
UG	1(2") HOPE W/ F.O. CABLE	EMT	EXISTING UTILITY POLE
UG	1(4") HOPE W/ 3(1.25")HOPE	R/W	PROPOSED PSLW VAULT (24"x36"x24")
AIR	FLEX INNERDUCT	EDGE-OF-PAVEMENT	EXISTING VAULT
CATS	AERIAL FIBER OPTIC CABLE	FENCE	PULLBOX
CATS	CATS CABLE	RACK LOCATION	MDF LOCATION

SCALE: 1"=80'

PAGE: 2

OF: 3

PS LIGHTWAVE

PROFESSIONAL CORPORATION, PROPERTY OF PS LIGHTWAVE

REVISION#1: Rev#1	DATE: Rev#1 Date
REVISION#2: Rev#2	DATE: Rev#2 Date
REVISION#3: Rev#3	DATE: Rev#3 Date
REVISION#4: Rev#4	DATE: Rev#4 Date

CUSTOMER ID: JOB# 0616-842 PLW

CUSTOMER: Notice of Proposed Utility Installation

ADDRESS: Sugar Land Howell Rd

CITY/ZIP: Houston, TX 77063

WOF: 88872

JOB#: 0616-842

APPROVED BY: DATE:

TENANTS:

OF FLOORS:

DWG#:

DRAWN BY: QC

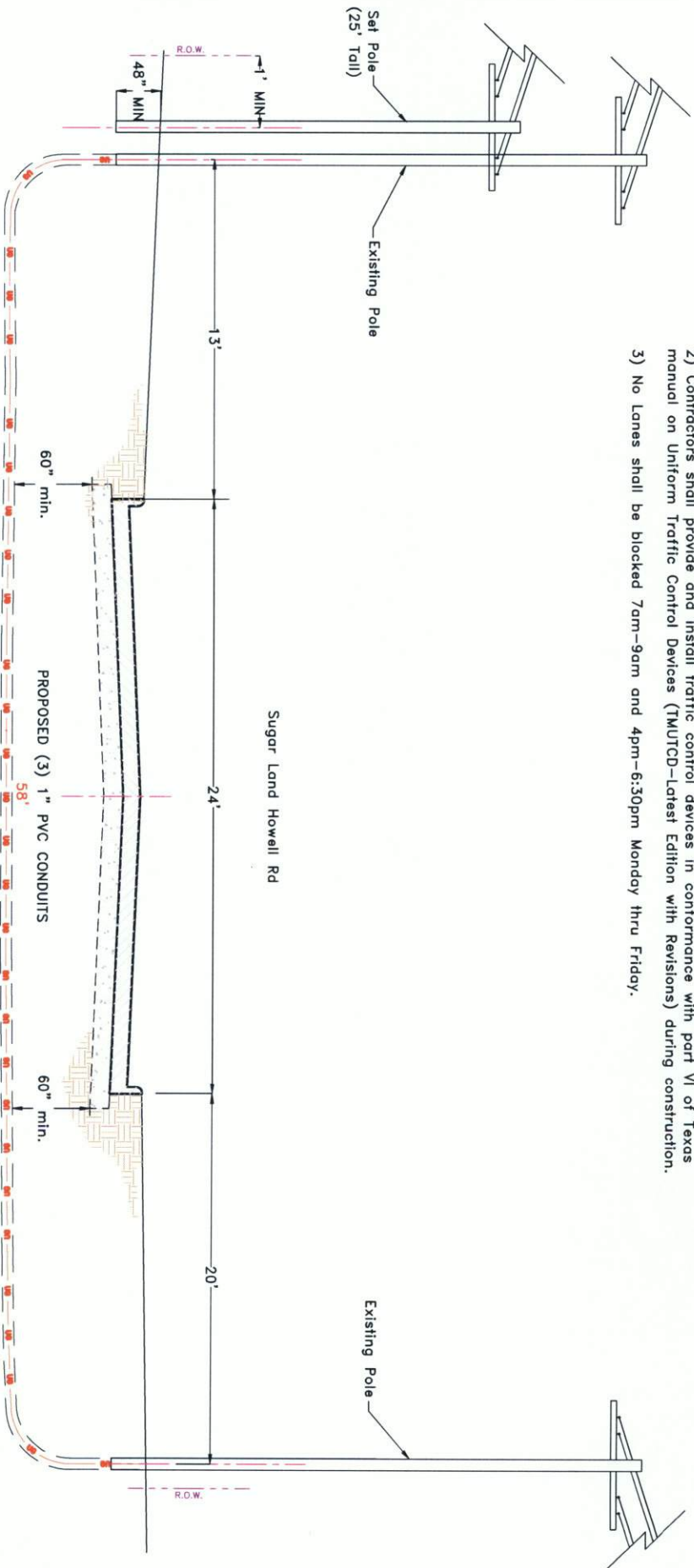
COUNTY: Fort Bend

KEY MAP: 5285

DATE: 02/10/17

General Notes:

- 1) Surface to be restored to its original condition in compliance with Fort Bend County Standards.
- 2) Contractors shall provide and install traffic control devices in conformance with part VI of Texas manual on Uniform Traffic Control Devices (TMUTCD-Latest Edition with Revisions) during construction.
- 3) No Lanes shall be blocked 7am-9am and 4pm-6:30pm Monday thru Friday.



UG	3(1") HOPE W/ F.O. CABLE	PROPOSED CONDUIT	PSLW SET POLE
UG	3(1.25") HOPE W/ F.O. CABLE	EXISTING CONDUIT	EXISTING SET POLE
UG	1(2") HOPE W/ F.O. CABLE	EMT 1.25" EMT	EXISTING UTILITY POLE
UG	1(4") HOPE W/ 3(1.25")HOPE	R/W	PROPOSED PSLW VAULT (24"x36"x24")
UG	FLEX INNERDUCT	EDGE-OF-PAVEMENT	EXISTING VAULT
AIR	AERIAL FIBER OPTIC CABLE	FENCE	PULLBOX
CATS	CATS CABLE	RACK LOCATION	MDF LOCATION

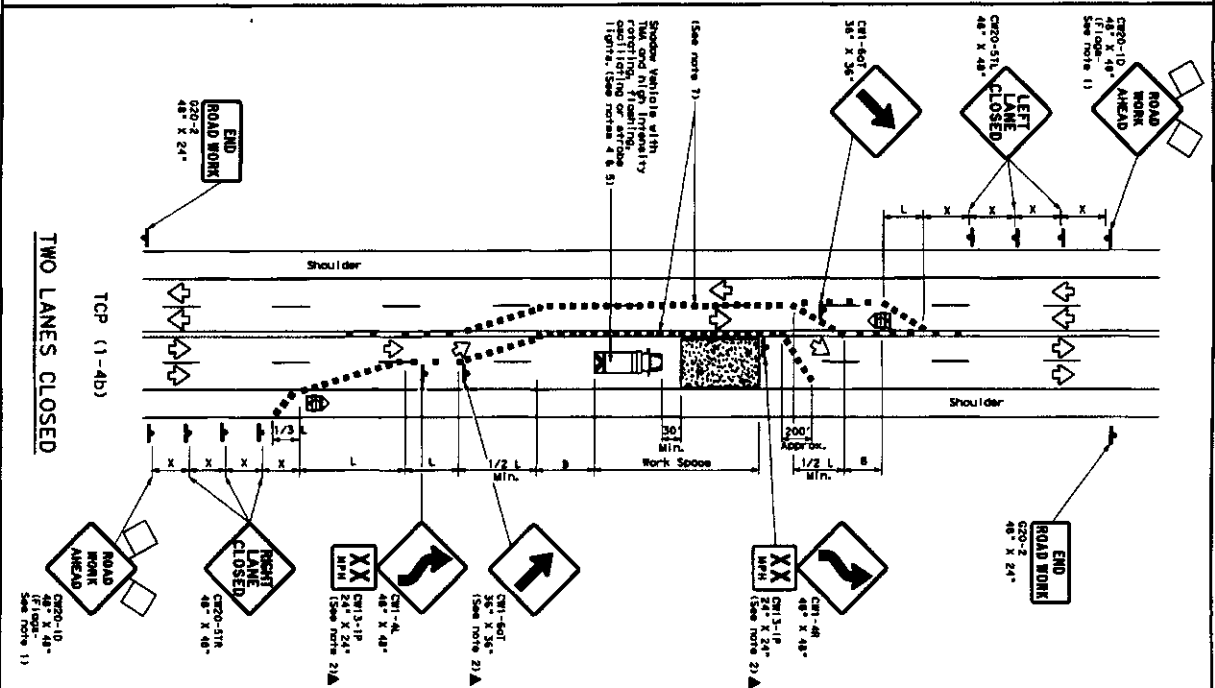
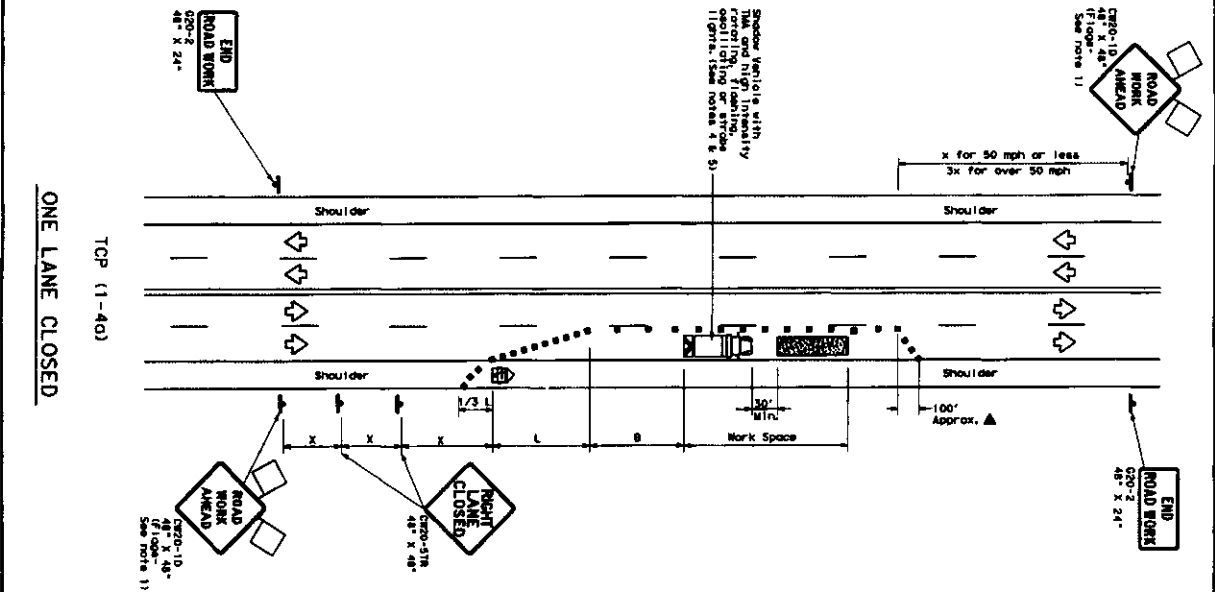
				Job# 0616-842 PLW			
REVISION#1: Rev#1 REVISION#2: Rev#2 REVISION#3: Rev#3 REVISION#4: Rev#4				DATE: Rev#1 Date DATE: Rev#2 Date DATE: Rev#3 Date DATE: Rev#4 Date			
SCALE: N.T.S. PAGE: 3 OF: 3				ADDRESS: Sugar Land Howell Rd CITY/ZIP: Houston, TX 77063 COUNTY: Fort Bend JOB# 88972 JOB# 0616-842 DATE: 02/10/17			



19

DISCLAIMER: The use of this standard is governed by the "Texas Engineering Practice Act". No warranty of any kind is made by TxDOT for any purpose whatsoever. TxDOT assumes no responsibility for the conversion of this standard to other formats or for incorrect results or damages resulting from its use.

DATE: FILE:



TRAFFIC CONTROL PLAN

LANE CLOSURES ON MULTILANE CONVENTIONAL ROADS

TCP (1-4) - 12

Texas Department of Transportation
Traffic Control Division

For construction or maintenance work, specific project and end-of-work signs can be found in the TxDOT Traffic Control Manual, Signs and Markings Manual.

LEGEND

Symbol	Description	Sign Number
[Type 3 Barricade]	Channelizing Device	200
[Truck Mounted Retarder]	Truck Mounted Retarder (TMR)	201
[Truck Mounted Retarder]	Truck Mounted Retarder (TMR)	202
[Truck Mounted Retarder]	Truck Mounted Retarder (TMR)	203
[Truck Mounted Retarder]	Truck Mounted Retarder (TMR)	204
[Truck Mounted Retarder]	Truck Mounted Retarder (TMR)	205
[Truck Mounted Retarder]	Truck Mounted Retarder (TMR)	206
[Truck Mounted Retarder]	Truck Mounted Retarder (TMR)	207
[Truck Mounted Retarder]	Truck Mounted Retarder (TMR)	208
[Truck Mounted Retarder]	Truck Mounted Retarder (TMR)	209
[Truck Mounted Retarder]	Truck Mounted Retarder (TMR)	210
[Truck Mounted Retarder]	Truck Mounted Retarder (TMR)	211
[Truck Mounted Retarder]	Truck Mounted Retarder (TMR)	212
[Truck Mounted Retarder]	Truck Mounted Retarder (TMR)	213
[Truck Mounted Retarder]	Truck Mounted Retarder (TMR)	214
[Truck Mounted Retarder]	Truck Mounted Retarder (TMR)	215
[Truck Mounted Retarder]	Truck Mounted Retarder (TMR)	216
[Truck Mounted Retarder]	Truck Mounted Retarder (TMR)	217
[Truck Mounted Retarder]	Truck Mounted Retarder (TMR)	218
[Truck Mounted Retarder]	Truck Mounted Retarder (TMR)	219
[Truck Mounted Retarder]	Truck Mounted Retarder (TMR)	220
[Truck Mounted Retarder]	Truck Mounted Retarder (TMR)	221
[Truck Mounted Retarder]	Truck Mounted Retarder (TMR)	222
[Truck Mounted Retarder]	Truck Mounted Retarder (TMR)	223
[Truck Mounted Retarder]	Truck Mounted Retarder (TMR)	224
[Truck Mounted Retarder]	Truck Mounted Retarder (TMR)	225
[Truck Mounted Retarder]	Truck Mounted Retarder (TMR)	226
[Truck Mounted Retarder]	Truck Mounted Retarder (TMR)	227
[Truck Mounted Retarder]	Truck Mounted Retarder (TMR)	228
[Truck Mounted Retarder]	Truck Mounted Retarder (TMR)	229
[Truck Mounted Retarder]	Truck Mounted Retarder (TMR)	230
[Truck Mounted Retarder]	Truck Mounted Retarder (TMR)	231
[Truck Mounted Retarder]	Truck Mounted Retarder (TMR)	232
[Truck Mounted Retarder]	Truck Mounted Retarder (TMR)	233
[Truck Mounted Retarder]	Truck Mounted Retarder (TMR)	234
[Truck Mounted Retarder]	Truck Mounted Retarder (TMR)	235
[Truck Mounted Retarder]	Truck Mounted Retarder (TMR)	236
[Truck Mounted Retarder]	Truck Mounted Retarder (TMR)	237
[Truck Mounted Retarder]	Truck Mounted Retarder (TMR)	238
[Truck Mounted Retarder]	Truck Mounted Retarder (TMR)	239
[Truck Mounted Retarder]	Truck Mounted Retarder (TMR)	240
[Truck Mounted Retarder]	Truck Mounted Retarder (TMR)	241
[Truck Mounted Retarder]	Truck Mounted Retarder (TMR)	242
[Truck Mounted Retarder]	Truck Mounted Retarder (TMR)	243
[Truck Mounted Retarder]	Truck Mounted Retarder (TMR)	244
[Truck Mounted Retarder]	Truck Mounted Retarder (TMR)	245
[Truck Mounted Retarder]	Truck Mounted Retarder (TMR)	246
[Truck Mounted Retarder]	Truck Mounted Retarder (TMR)	247
[Truck Mounted Retarder]	Truck Mounted Retarder (TMR)	248
[Truck Mounted Retarder]	Truck Mounted Retarder (TMR)	249
[Truck Mounted Retarder]	Truck Mounted Retarder (TMR)	250
[Truck Mounted Retarder]	Truck Mounted Retarder (TMR)	251
[Truck Mounted Retarder]	Truck Mounted Retarder (TMR)	252
[Truck Mounted Retarder]	Truck Mounted Retarder (TMR)	253
[Truck Mounted Retarder]	Truck Mounted Retarder (TMR)	254
[Truck Mounted Retarder]	Truck Mounted Retarder (TMR)	255
[Truck Mounted Retarder]	Truck Mounted Retarder (TMR)	256
[Truck Mounted Retarder]	Truck Mounted Retarder (TMR)	257
[Truck Mounted Retarder]	Truck Mounted Retarder (TMR)	258
[Truck Mounted Retarder]	Truck Mounted Retarder (TMR)	259
[Truck Mounted Retarder]	Truck Mounted Retarder (TMR)	260
[Truck Mounted Retarder]	Truck Mounted Retarder (TMR)	261
[Truck Mounted Retarder]	Truck Mounted Retarder (TMR)	262
[Truck Mounted Retarder]	Truck Mounted Retarder (TMR)	263
[Truck Mounted Retarder]	Truck Mounted Retarder (TMR)	264
[Truck Mounted Retarder]	Truck Mounted Retarder (TMR)	265
[Truck Mounted Retarder]	Truck Mounted Retarder (TMR)	266
[Truck Mounted Retarder]	Truck Mounted Retarder (TMR)	267
[Truck Mounted Retarder]	Truck Mounted Retarder (TMR)	268
[Truck Mounted Retarder]	Truck Mounted Retarder (TMR)	269
[Truck Mounted Retarder]	Truck Mounted Retarder (TMR)	270
[Truck Mounted Retarder]	Truck Mounted Retarder (TMR)	271
[Truck Mounted Retarder]	Truck Mounted Retarder (TMR)	272
[Truck Mounted Retarder]	Truck Mounted Retarder (TMR)	273
[Truck Mounted Retarder]	Truck Mounted Retarder (TMR)	274
[Truck Mounted Retarder]	Truck Mounted Retarder (TMR)	275
[Truck Mounted Retarder]	Truck Mounted Retarder (TMR)	276
[Truck Mounted Retarder]	Truck Mounted Retarder (TMR)	277
[Truck Mounted Retarder]	Truck Mounted Retarder (TMR)	278
[Truck Mounted Retarder]	Truck Mounted Retarder (TMR)	279
[Truck Mounted Retarder]	Truck Mounted Retarder (TMR)	280
[Truck Mounted Retarder]	Truck Mounted Retarder (TMR)	281
[Truck Mounted Retarder]	Truck Mounted Retarder (TMR)	282
[Truck Mounted Retarder]	Truck Mounted Retarder (TMR)	283
[Truck Mounted Retarder]	Truck Mounted Retarder (TMR)	284
[Truck Mounted Retarder]	Truck Mounted Retarder (TMR)	285
[Truck Mounted Retarder]	Truck Mounted Retarder (TMR)	286
[Truck Mounted Retarder]	Truck Mounted Retarder (TMR)	287
[Truck Mounted Retarder]	Truck Mounted Retarder (TMR)	288
[Truck Mounted Retarder]	Truck Mounted Retarder (TMR)	289
[Truck Mounted Retarder]	Truck Mounted Retarder (TMR)	290
[Truck Mounted Retarder]	Truck Mounted Retarder (TMR)	291
[Truck Mounted Retarder]	Truck Mounted Retarder (TMR)	292
[Truck Mounted Retarder]	Truck Mounted Retarder (TMR)	293
[Truck Mounted Retarder]	Truck Mounted Retarder (TMR)	294
[Truck Mounted Retarder]	Truck Mounted Retarder (TMR)	295
[Truck Mounted Retarder]	Truck Mounted Retarder (TMR)	296
[Truck Mounted Retarder]	Truck Mounted Retarder (TMR)	297
[Truck Mounted Retarder]	Truck Mounted Retarder (TMR)	298
[Truck Mounted Retarder]	Truck Mounted Retarder (TMR)	299
[Truck Mounted Retarder]	Truck Mounted Retarder (TMR)	300

GENERAL NOTES

1. Plans attached to signs were either as required.
2. All traffic control devices (illustrated or required) except those depicted or for routine maintenance work, shall be maintained in accordance with the plan.
3. The C20-10 "ROAD WORK AHEAD" sign may be repeated if the visibility of the work zone is less than 1000 feet.
4. A shadow vehicle with a TMA should be used anytime it can be positioned in the work zone to provide advance warning of the work zone. It should be positioned but not used when the work zone is less than 1000 feet.
5. A shadow vehicle with a TMA should be used anytime it can be positioned in the work zone to provide advance warning of the work zone. It should be positioned but not used when the work zone is less than 1000 feet.
6. A shadow vehicle with a TMA should be used anytime it can be positioned in the work zone to provide advance warning of the work zone. It should be positioned but not used when the work zone is less than 1000 feet.
7. When traffic is directed over a yellow centerline channelizing device, it should be placed at least 100 feet from the end of the work zone. If posted speeds are 35 mph or slower, and for tangent sections, or 175 mph or less, this "lighter" device spacing is intended for the grade of centerline markings, not the entire work zone.

TYPICAL USAGE

MOBILE	SHORT	SHORT TERM	INTERMEDIATE	LONG TERM
1	2	3	4	5
6	7	8	9	10
11	12	13	14	15
16	17	18	19	20
21	22	23	24	25
26	27	28	29	30
31	32	33	34	35
36	37	38	39	40
41	42	43	44	45
46	47	48	49	50
51	52	53	54	55
56	57	58	59	60
61	62	63	64	65
66	67	68	69	70
71	72	73	74	75
76	77	78	79	80
81	82	83	84	85
86	87	88	89	90
91	92	93	94	95
96	97	98	99	100