



**REVIEW BY FORT BEND COUNTY  
COMMISSIONERS COURT**

**Fort Bend County  
Engineering Department**  
301 Jackson Suite 401  
Richmond, Texas 77469  
281.633.7500  
Permits@fortbendcountytexas.gov

☒ Right of Way Permit  
☐ Commercial Driveway Permit  
Permit No: 2017-13711

**Applicant:** PS Light Wave, Inc.

**Job Location Site:** Farmer Road, Richmond, TX 77406

**Bond No.** 12100000 **Date of Bond:** 12/13/2016 **Amount:** \$50,000.00

The above applicant came to make use of certain Fort Bend County property subject to, "The Order Regulating the Laying, Construction, Maintenance, and Repair of Buried Cables, Conduits, and Pole Lines, In, Under, Across or Along Roads, Streets, Highways, and Drainage Ditches in Fort Bend County, Texas, Under the Jurisdiction of the Commissioners Court of Fort Bend County, Texas," as passed by the Commissioners Court of Fort Bend County, Texas, of the Minutes of the Commissioners Court of Fort Bend County, Texas, to the extent that such order is not inconsistent with Chapter 181, Vernon's Texas Statutes and Codes Annotated.

**Notes:**

1. Evidence of review by the Commissioners Court must be kept on the job site and failure to do so constitutes grounds for job shutdown.
2. Written notices are required:
  - a. 48 hours in advance of construction start up, and
  - b. When construction is completed and ready for final inspection, submit notification to Permit Administrator thru MyGovernmentOnline.org portal.
3. This permit expires one (1) year from date of permit if construction has not commenced.

On this 23rd day of May, 2017, Upon Motion of Commissioner Meyer, seconded by Commissioner Mosales, duly put and carried, it is ORDERED, ADJUDGED AND DECREED that said notice of said above purpose is hereby acknowledged by the Commissioners Court of Fort Bend County, Texas, and that said notice be placed on record according to the regulation order thereof.

**Signature**

Presented to Commissioners Court and approved.

By: Charles O. Ay  
County Engineer

Date Recorded 5-30-2017 Comm. Court No. 96

By: N/A  
Drainage District Engineer/Manager

Clerk of Commissioners Court

By: Ronda Willis  
Deputy



**PERMIT APPLICATION REVIEW FORM FOR  
CABLE, CONDUIT, AND POLE LINE ACTIVITY  
IN FORT BEND COUNTY**

**Fort Bend County  
Engineering Department**  
301 Jackson Suite 401  
Richmond, Texas 77469  
281.633.7500  
Permits@fortbendcountytx.gov

- ☒ Right of Way Permit  
☐ Commercial Driveway Permit

Permit No: 2017-13711

The following "Notice of Proposed Cable, Conduit, and/or Pole Line activity in Fort Bend County" and accompanying attachments have been reviewed and the notice conforms to appropriate regulations set by Commissioner's Court of Fort Bend County, Texas.

**(1) COMPLETE APPLICATION FORM:**

- ☒ a. Name of road, street, and/or drainage ditch affected.  
☒ b. Vicinity map showing course of directions  
☒ c. Plans and specifications

**(2) BOND:**

- ☐ County Attorney, approval when applicable.
- ☒ Perpetual bond currently posted.      Bond No. [REDACTED]      Amount: \$50,000.00
- ☐ Performance bond submitted.      Bond No: \_\_\_\_\_      Amount: \_\_\_\_\_
- ☐ Cashier's Check      Check No: \_\_\_\_\_      Amount: \_\_\_\_\_

**(3) DRAINAGE DISTRICT APPROVAL (WHEN APPLICABLE):**

\_\_\_\_\_  
Drainage District Approval

\_\_\_\_\_  
Date

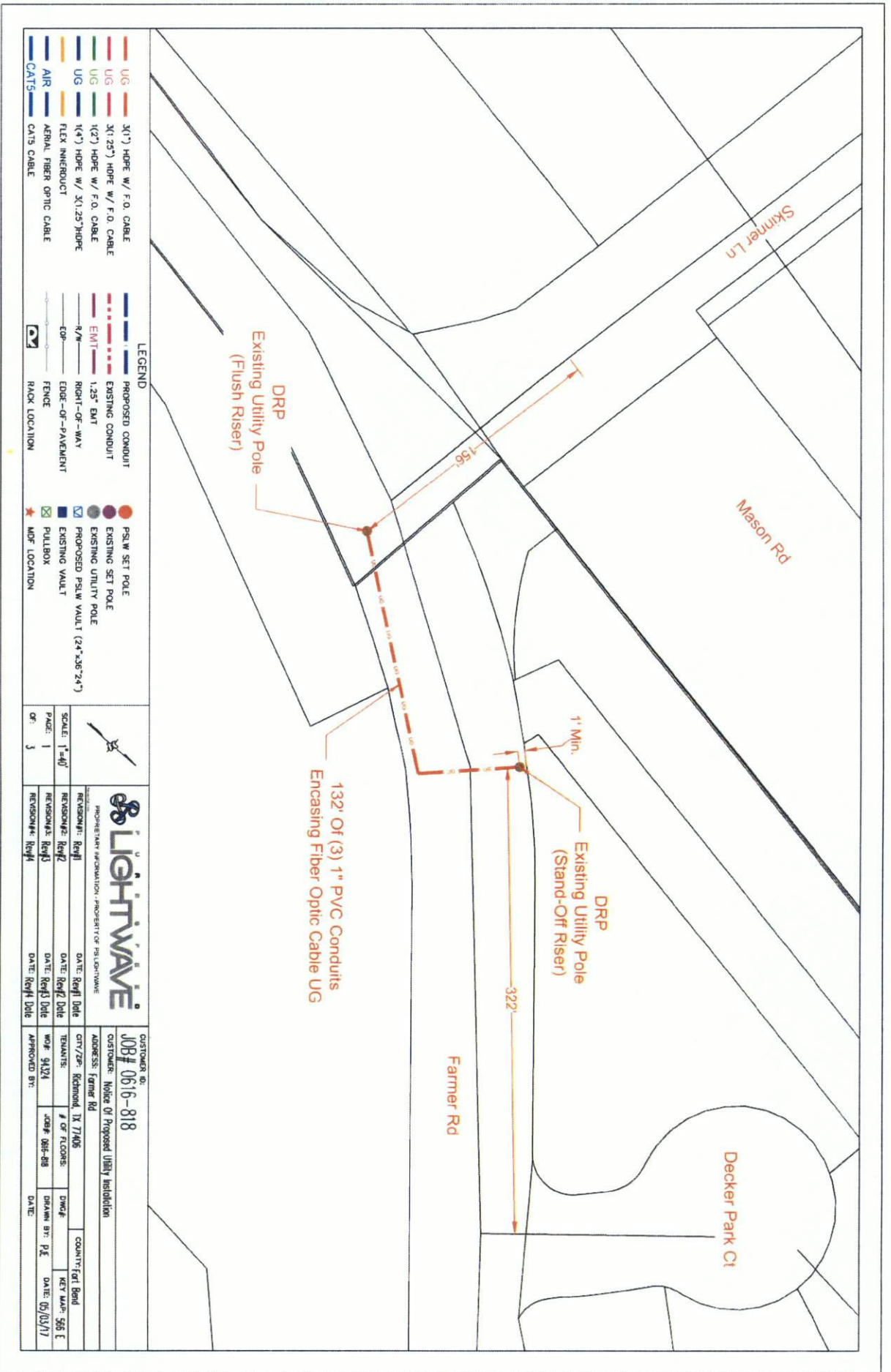
**We have reviewed this project and agree it meets minimum requirements.**

*Charles O. Ay*

\_\_\_\_\_  
Permit Administrator

*5/15/17*

\_\_\_\_\_  
Date



**LEGEND**

UG	30" HOPE W/ F.O. CABLE	PROPOSED CONDUIT	PSLW SET POLE
UG	30" HOPE W/ F.O. CABLE	EXISTING CONDUIT	EXISTING SET POLE
UG	1/2" HOPE W/ F.O. CABLE	EMT 1.25' EMT	EXISTING UTILITY POLE
UG	1/4" HOPE W/ 30.25 HOPE	R/W	PROPOSED PSLW VAULT (24"x36"x24")
UG	1/4" HOPE W/ 30.25 HOPE	EDGE-OF-PAVEMENT	EXISTING VAULT
AIR	FLEX INNERDUCT	EDGE-OF-PAVEMENT	PULL BOX
AIR	AERIAL FIBER OPTIC CABLE	FENCE	MDP LOCATION
CAT5	CAT5 CABLE	RACK LOCATION	

		<b>CUSTOMER ID:</b> <b>JOB# 0616-818</b>	
<b>PROFESSIONAL INFORMATION - PROPERTY OF LIGHTWAVE</b>		<b>CUSTOMER:</b> Notice Of Proposed Utility Installation	
<b>REVISION#1:</b> Rev#1	<b>DATE:</b> Rev#1 Date	<b>CITY/ZIP:</b> Richmond, TX 77406	<b>COUNTY:</b> Fort Bend
<b>REVISION#2:</b> Rev#2	<b>DATE:</b> Rev#2 Date	<b>TENANTS:</b>	<b>DWG#</b>
<b>REVISION#3:</b> Rev#3	<b>DATE:</b> Rev#3 Date	<b>WOF:</b> 9/3/21	<b>KEY MAP:</b> 566 E
<b>REVISION#4:</b> Rev#4	<b>DATE:</b> Rev#4 Date	<b>APPROVED BY:</b>	<b>DATE:</b> 05/03/17

SCALE: 1"=40'  
PAGE: 1 OF 3

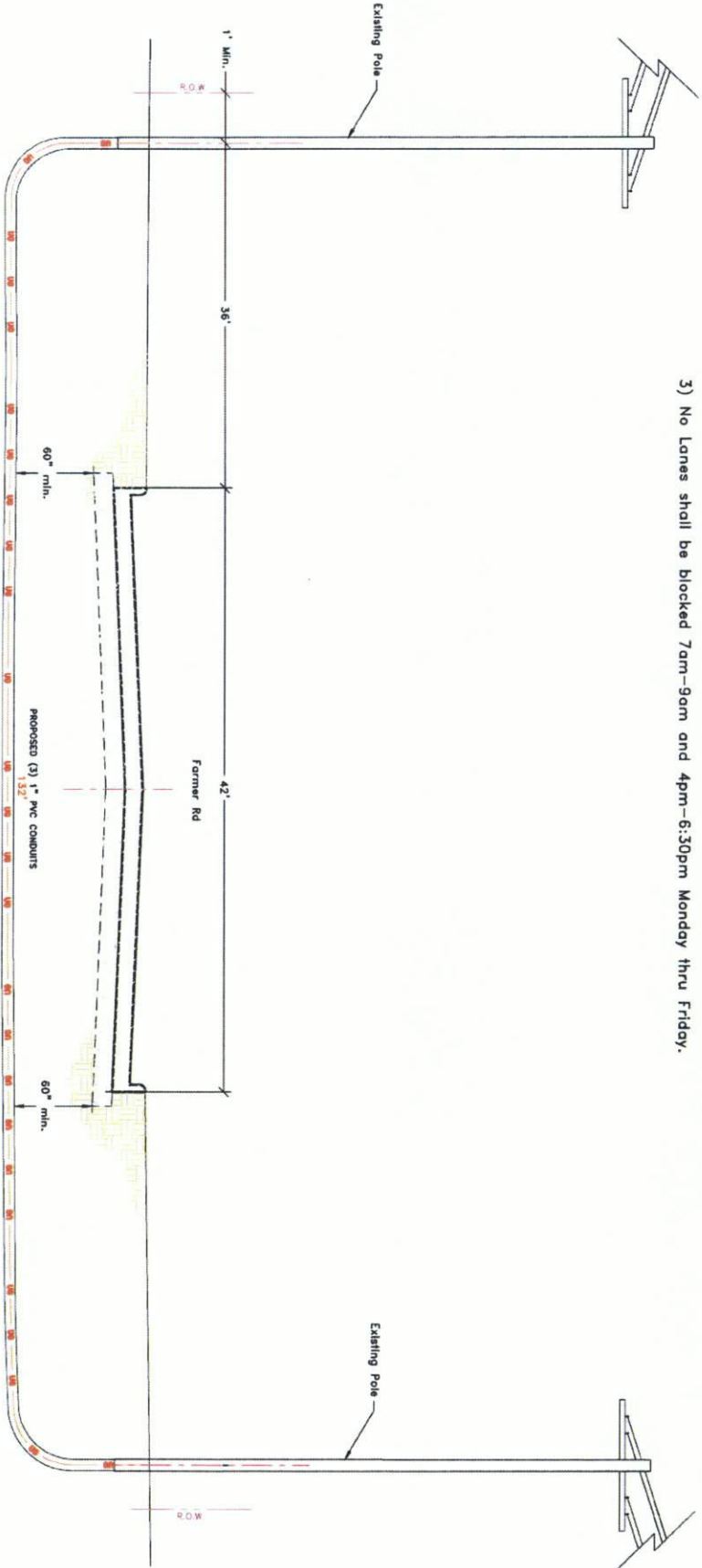






**General Notes:**

- 1) Surface to be restored to its original condition in compliance with Fort Bend County Standards.
- 2) Contractors shall provide and install traffic control devices in conformance with part VI of Texas manual on Uniform Traffic Control Devices (TMUTCD--Latest Edition with Revisions) during construction.
- 3) No Lanes shall be blocked 7am-9am and 4pm-6:30pm Monday thru Friday.

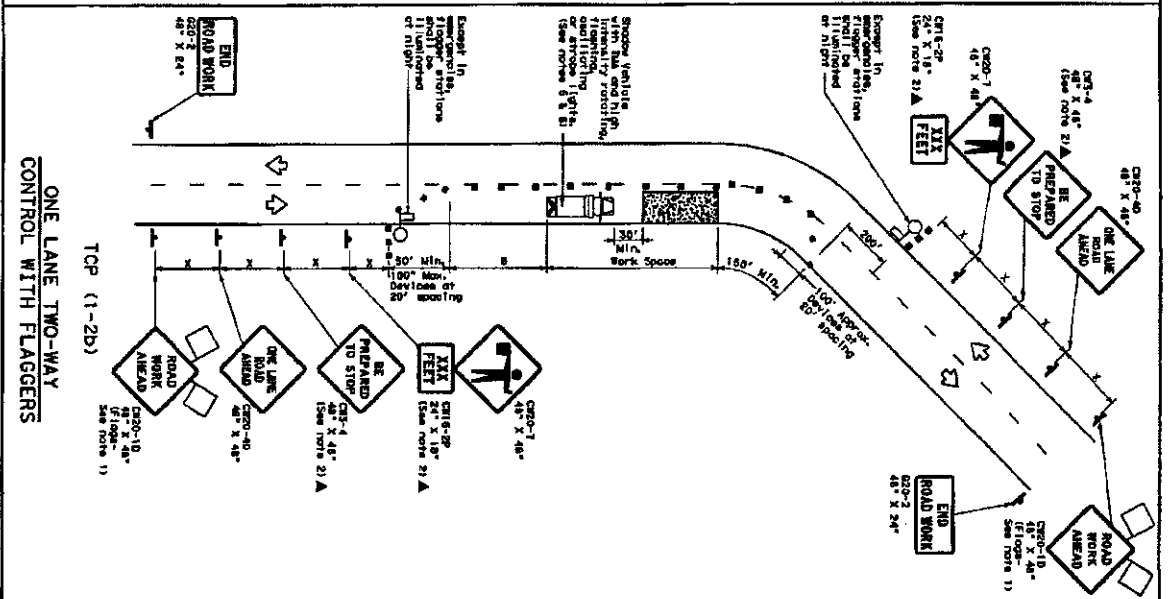
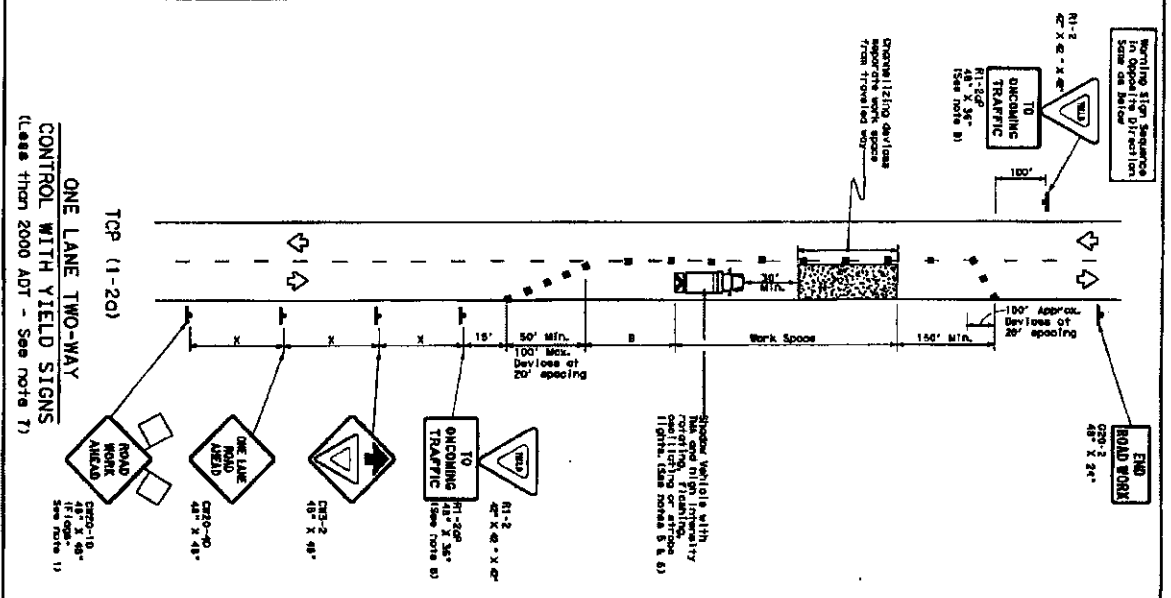


<b>LEGEND</b>				<b>Job# 0616-818</b>	
UG	3(1") PVC W/ F.O. CABLE	PSLW SET POLE	REVISION: Rev1	DATE: Rev1 Date	CITY/Zip: Richmond, TX 77106
UG	3(1.25") PVC W/ F.O. CABLE	EXISTING SET POLE	REVISION: Rev2	DATE: Rev2 Date	TOVANTS:
UG	1(2") PVC W/ F.O. CABLE	EXISTING UTILITY POLE	REVISION: Rev3	DATE: Rev3 Date	MO# 94324
UG	1(4") HDPE W/ 3(1.25") PVC	PROPOSED PSLW VAULT (24"x36"x24")	REVISION: Rev4	DATE: Rev4 Date	APPROVED BY:
UG	FLEX INNERDUCT	EXISTING VAULT			
AIR	AERIAL FIBER OPTIC CABLE	PULLBOX			
CAT5	CAT5 CABLE	MOF LOCATION			
---	PROPOSED CONDUIT				
---	EXISTING CONDUIT				
---	1.25" EMT				
---	R/W				
---	RIGHT-OF-WAY				
---	EDGE-OF-PAVEMENT				
---	FENCE				
---	RACK LOCATION				


























SCALE: N15	DATE: Rev1 Date	CITY/Zip: Richmond, TX 77106
PAGE: 3	DATE: Rev2 Date	TOVANTS:
OF: 3	DATE: Rev3 Date	MO# 94324
	DATE: Rev4 Date	APPROVED BY:

<b>Job# 0616-818</b>		<b>Notice of Proposed Utility Installation</b>	
ADDRESS: Former Rd	CITY/Zip: Richmond, TX 77106	DATE: Rev1 Date	CITY/Zip: Richmond, TX 77106
TOVANTS:	DATE: Rev2 Date	DATE: Rev3 Date	DATE: Rev4 Date
MO# 94324	DATE: Rev1 Date	DATE: Rev2 Date	DATE: Rev3 Date
APPROVED BY:	DATE: Rev4 Date	DATE: Rev1 Date	DATE: Rev2 Date

**DATE:**  
**FILE:**



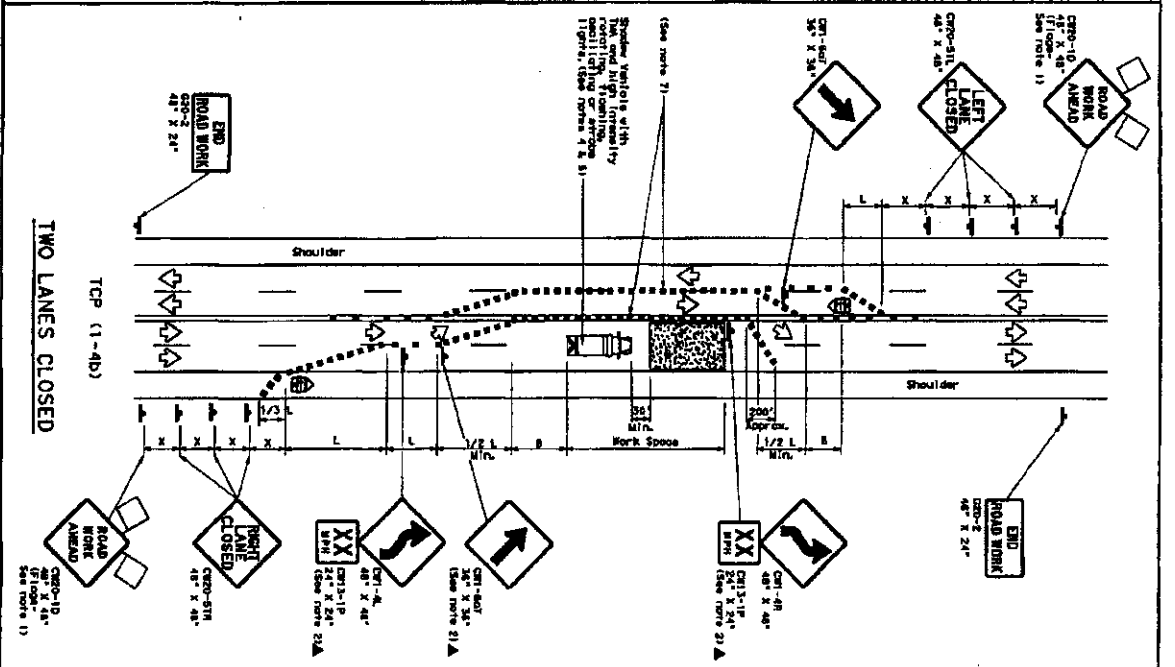
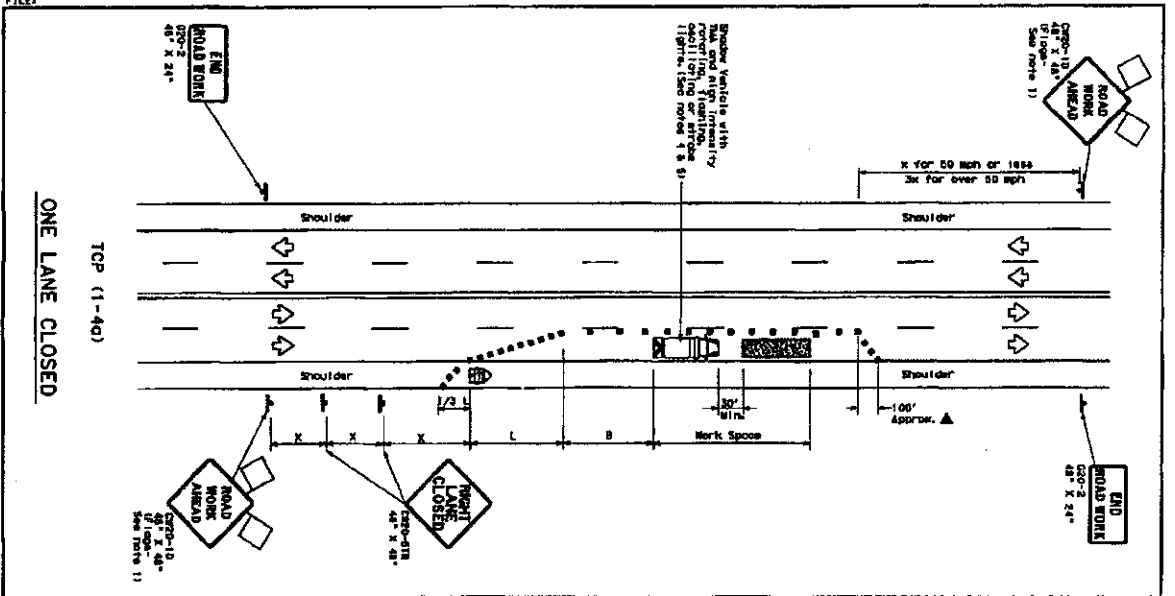
1. Model 1500  
 2. Year 1984  
 3. Make Oldsmobile  
 4. Model Delta  
 5. Year 1984  
 6. Make Oldsmobile  
 7. Model Delta  
 8. Year 1984  
 9. Make Oldsmobile  
 10. Model Delta  
 11. Year 1984  
 12. Make Oldsmobile  
 13. Model Delta  
 14. Year 1984  
 15. Make Oldsmobile  
 16. Model Delta  
 17. Year 1984  
 18. Make Oldsmobile  
 19. Model Delta  
 20. Year 1984  
 21. Make Oldsmobile  
 22. Model Delta  
 23. Year 1984  
 24. Make Oldsmobile  
 25. Model Delta  
 26. Year 1984  
 27. Make Oldsmobile  
 28. Model Delta  
 29. Year 1984  
 30. Make Oldsmobile  
 31. Model Delta  
 32. Year 1984  
 33. Make Oldsmobile  
 34. Model Delta  
 35. Year 1984  
 36. Make Oldsmobile  
 37. Model Delta  
 38. Year 1984  
 39. Make Oldsmobile  
 40. Model Delta  
 41. Year 1984  
 42. Make Oldsmobile  
 43. Model Delta  
 44. Year 1984  
 45. Make Oldsmobile  
 46. Model Delta  
 47. Year 1984  
 48. Make Oldsmobile  
 49. Model Delta  
 50. Year 1984  
 51. Make Oldsmobile  
 52. Model Delta  
 53. Year 1984  
 54. Make Oldsmobile  
 55. Model Delta  
 56. Year 1984  
 57. Make Oldsmobile  
 58. Model Delta  
 59. Year 1984  
 60. Make Oldsmobile  
 61. Model Delta  
 62. Year 1984  
 63. Make Oldsmobile  
 64. Model Delta  
 65. Year 1984  
 66. Make Oldsmobile  
 67. Model Delta  
 68. Year 1984  
 69. Make Oldsmobile  
 70. Model Delta  
 71. Year 1984  
 72. Make Oldsmobile  
 73. Model Delta  
 74. Year 1984  
 75. Make Oldsmobile  
 76. Model Delta  
 77. Year 1984  
 78. Make Oldsmobile  
 79. Model Delta  
 80. Year 1984  
 81. Make Oldsmobile  
 82. Model Delta  
 83. Year 1984  
 84. Make Oldsmobile  
 85. Model Delta  
 86. Year 1984  
 87. Make Oldsmobile  
 88. Model Delta  
 89. Year 1984  
 90. Make Oldsmobile  
 91. Model Delta  
 92. Year 1984  
 93. Make Oldsmobile  
 94. Model Delta  
 95. Year 1984  
 96. Make Oldsmobile  
 97. Model Delta  
 98. Year 1984  
 99. Make Oldsmobile  
 100. Model Delta  
 101. Year 1984  
 102. Make Oldsmobile  
 103. Model Delta  
 104. Year 1984  
 105. Make Oldsmobile  
 106. Model Delta  
 107. Year 1984  
 108. Make Oldsmobile  
 109. Model Delta  
 110. Year 1984  
 111. Make Oldsmobile  
 112. Model Delta  
 113. Year 1984  
 114. Make Oldsmobile  
 115. Model Delta  
 116. Year 1984  
 117. Make Oldsmobile  
 118. Model Delta  
 119. Year 1984  
 120. Make Oldsmobile  
 121. Model Delta  
 122. Year 1984  
 123. Make Oldsmobile  
 124. Model Delta  
 125. Year 1984  
 126. Make Oldsmobile  
 127. Model Delta  
 128. Year 1984  
 129. Make Oldsmobile  
 130. Model Delta  
 131. Year 1984  
 132. Make Oldsmobile  
 133. Model Delta  
 134. Year 1984  
 135. Make Oldsmobile  
 136. Model Delta  
 137. Year 1984  
 138. Make Oldsmobile  
 139. Model Delta  
 140. Year 1984  
 141. Make Oldsmobile  
 142. Model Delta  
 143. Year 1984  
 144. Make Oldsmobile  
 145. Model Delta  
 146. Year 1984  
 147. Make Oldsmobile  
 148. Model Delta  
 149. Year 1984  
 150. Make Oldsmobile  
 151. Model Delta  
 152. Year 1984  
 153. Make Oldsmobile  
 154. Model Delta  
 155. Year 1984  
 156. Make Oldsmobile  
 157. Model Delta  
 158. Year 1984  
 159. Make Oldsmobile  
 160. Model Delta  
 161. Year 1984  
 162. Make Oldsmobile  
 163. Model Delta  
 164. Year 1984  
 165. Make Oldsmobile  
 166. Model Delta  
 167. Year 1984  
 168. Make Oldsmobile  
 169. Model Delta  
 170. Year 1984  
 171

LEGEND									
	Type 3 Bertha icon		M3		Germanizing device		Sighting device		Sighting device
	Heavy Bort vehicle		C30		Cannon		Sighting device		Sighting device
	Thriller mounted on board		M1		Perforated in response to machine sign (PMS)		Sighting device		Sighting device
	Sight		Terrorist		Terrorist		Sighting device		Sighting device
	F100		F100		F100		Sighting device		Sighting device

1. Flights assigned to assign where they are RECEIVING.  
2. Flights assigned to assign where they are DEPARTING. In any case, flights assigned with the "C" in the "FLIGHT" column should be assigned when stated elsewhere in the plan, or the "FLIGHT" column.  
3. Flights assigned to assign where they are DEPARTING. In any case, flights assigned with the "C" in the "FLIGHT" column should be assigned when stated elsewhere in the plan, or the "FLIGHT" column.  
4. Flights assigned to assign where they are DEPARTING. In any case, flights assigned with the "C" in the "FLIGHT" column should be assigned when stated elsewhere in the plan, or the "FLIGHT" column.  
5. Flights assigned to assign where they are DEPARTING. In any case, flights assigned with the "C" in the "FLIGHT" column should be assigned when stated elsewhere in the plan, or the "FLIGHT" column.  
6. Flights assigned to assign where they are DEPARTING. In any case, flights assigned with the "C" in the "FLIGHT" column should be assigned when stated elsewhere in the plan, or the "FLIGHT" column.  
7. Flights assigned to assign where they are DEPARTING. In any case, flights assigned with the "C" in the "FLIGHT" column should be assigned when stated elsewhere in the plan, or the "FLIGHT" column.  
8. Flights assigned to assign where they are DEPARTING. In any case, flights assigned with the "C" in the "FLIGHT" column should be assigned when stated elsewhere in the plan, or the "FLIGHT" column.  
9. Flights assigned to assign where they are DEPARTING. In any case, flights assigned with the "C" in the "FLIGHT" column should be assigned when stated elsewhere in the plan, or the "FLIGHT" column.  
10. Flights assigned to assign where they are DEPARTING. In any case, flights assigned with the "C" in the "FLIGHT" column should be assigned when stated elsewhere in the plan, or the "FLIGHT" column.

DISCLAIMER: The use of this standard is governed by the "Texas Engineering Practice Act". No warranty or any other statement of responsibility is made by the Texas Department of Transportation for the use of this standard or for any other purpose whatsoever. The user assumes all responsibility for the use of this standard or for any other purpose whatsoever.

DATE:  
FILE:



**LEGEND**

Symbol	Type 3	Symbol	Type 3
ROAD WORK AHEAD	ROAD WORK AHEAD	ROAD WORK AHEAD	ROAD WORK AHEAD
ROAD CLOSED	ROAD CLOSED	ROAD CLOSED	ROAD CLOSED
LEFT LANE CLOSED	LEFT LANE CLOSED	LEFT LANE CLOSED	LEFT LANE CLOSED
END ROAD WORK	END ROAD WORK	END ROAD WORK	END ROAD WORK

**TRAFFIC CONTROL PLAN**

**LANE CLOSURES ON MULTILANE CONVENTIONAL ROADS**

TCP (1-4)-12

**GENERAL NOTES**

1. Plans are to be used for all lane closures, except for the use of the "T" symbol.
2. All traffic control devices (signs, cones, barrels, etc.) must be placed in accordance with the Texas Department of Transportation Manual of Traffic Control.
3. The "T" symbol is to be used for all lane closures, except for the use of the "T" symbol.
4. A "T" symbol is to be used for all lane closures, except for the use of the "T" symbol.
5. A "T" symbol is to be used for all lane closures, except for the use of the "T" symbol.

**TYPICAL USAGE**

Symbol	Symbol	Symbol	Symbol
ROAD WORK AHEAD	ROAD WORK AHEAD	ROAD WORK AHEAD	ROAD WORK AHEAD
ROAD CLOSED	ROAD CLOSED	ROAD CLOSED	ROAD CLOSED
LEFT LANE CLOSED	LEFT LANE CLOSED	LEFT LANE CLOSED	LEFT LANE CLOSED
END ROAD WORK	END ROAD WORK	END ROAD WORK	END ROAD WORK