

THE STATE OF TEXAS §
 §
 COUNTY OF FORT BEND §

**RESOLUTION AND ORDER DECREERING THE ACQUISITION OF
 PROPERTY TO BE A PUBLIC NECESSITY AND AUTHORIZING THE
 ACQUISITION AND PAYMENT OF COMPENSATION**

WHEREAS, on the 9th day of May, 2017, at a regular meeting of the Commissioners Court of Fort Bend County, Texas, sitting as the governing body of Fort Bend County, upon motion of Commissioner Meyers, seconded by Commissioner Patterson, and upon record vote, passed 5 votes in favor 0 votes opposed:

RESOLUTION

RESOLVED THAT WHEREAS, the Commissioners Court has received and reviewed the plans for a public project known as the Katy-Flewellen Drainage Ditch Project, located from the East Right of Way Line of Katy Flewellen to the West Right of Way Line of Gaston Road, in Fort Bend County, Texas; and,

WHEREAS, Commissioners Court has determined that public necessity and convenience exists for the location, alignment, construction, operation, and maintenance, including appurtenant drainage and detention requirements, of a public project known as the Katy-Flewellen Drainage Ditch Project, located from the East Right of Way Line of Katy Flewellen to the West Right of Way Line of Gaston Road, in Fort Bend County, Texas, in accordance with said plans, alignment, and tract identifications which are made a part hereof as Exhibit A:

ORDER

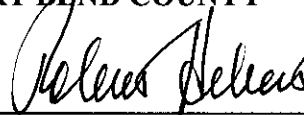
NOW THEREFORE, IT IS ORDERED AND DECREED that the plans for the location, alignment, construction, operation, and maintenance, including appurtenant drainage and detention requirements, of the public project known as the Katy-Flewellen Drainage Ditch Project, located from the East Right of Way Line of Katy Flewellen to the West Right of Way Line of Gaston Road, in Fort Bend County, Texas, is approved.

IT IS FURTHER ORDERED AND DECREED that public necessity and convenience exist for the public project, known as the Katy-Flewellen Drainage Ditch Project, located from the East Right of Way Line of Katy Flewellen to the West Right of Way Line of Gaston Road, in Fort Bend County, Texas, and that the County Engineer be authorized and directed to obtain appraisals, surveys, title information and/or make official offers of specific amount for the purchase of either easement or the fee simple interest in and to the tract(s) situated within such alignment as shown in Exhibit A; that the County Attorney be authorized and directed, and he is hereby authorized and directed to file or cause to be filed proceedings in eminent domain and to acquire thereby easement or fee simple interest for said purposes in the tract(s) which cannot be acquired as aforesaid by donation, dedication, or purchase.

IT IS FURTHER ORDERED AND DECREED that this Resolution and Order apply to any and all parcels of land that must be condemned for this project, that the County Judge, or designated representative be authorized and directed to sign any papers or agreements associated with closing the purchase(s); the County Attorney, County Clerk, County Auditor and County Treasurer be authorized and directed to perform any and all necessary acts within their respective spheres of official duties toward the final acquisition of the tract(s) of land, or interest(s) therein, together with the improvement if any, within the said public project known as the Katy-Flewellen Drainage Ditch Project, located from the East Right of Way Line of Katy Flewellen to the West Right of Way Line of Gaston Road, in Fort Bend County, Texas and the payment and compensation therefore.

PASSED AND APPROVED this 9 day of May, 2017.

FORT BEND COUNTY



Robert E. Hebert, County Judge

ATTEST:



Laura Richard, County Clerk



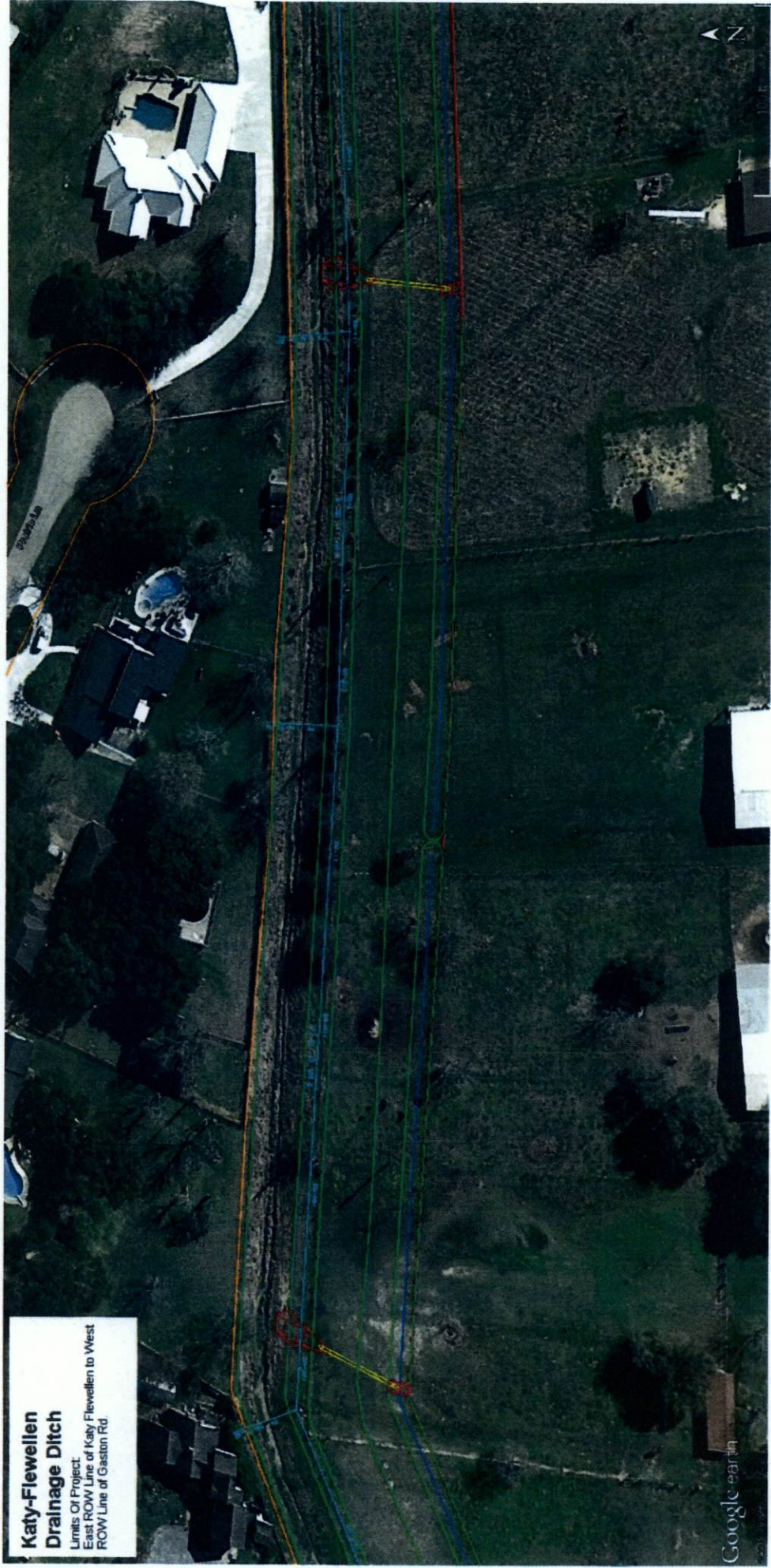
①



**Katy-Flewellen
Drainage Ditch**
Limits Of Project
East ROW Line of Katy Flewellen to West
ROW Line of Gaston Rd

**EXHIBIT
"A"**

2



**Katy-Flewellen
Drainage Ditch**
Limits Of Project:
East ROW Line of Katy Flewellen to West
ROW Line of Gaston Rd

Google earth

3



**Katy-Flewellen
Drainage Ditch**
Limits Of Project
East ROW Line of Katy Flewellen to West
ROW Line of Gaston Rd

4



**Katy-Flewellen
Drainage Ditch**
Limits Of Project
East ROW Line of Katy Flewellen to West
ROW Line of Gaston Rd.