

REVIEW BY FORT BEND COUNTY
COMMISSIONERS COURT

**Fort Bend County
Engineering Department**
301 Jackson Suite 401
Richmond, Texas 77469
281.633.7500
Permits@fortbendcountytexas.gov

☒ **Right of Way Permit**
☐ **Commercial Driveway Permit**
Permit No: 2017-11420

Applicant: PS Light Wave, Inc.

Job Location Site: Harlem Road and Bullhead Slough Lateral II-L-2, Richmond, TX 77406

Bond No. 10100000 **Date of Bond:** 12/13/2016 **Amount:** \$50,000.00

The above applicant came to make use of certain Fort Bend County property subject to, "The Order Regulating the Laying, Construction, Maintenance, and Repair of Buried Cables, Conduits, and Pole Lines, In, Under, Across or Along Roads, Streets, Highways, and Drainage Ditches in Fort Bend County, Texas, Under the Jurisdiction of the Commissioners Court of Fort Bend County, Texas," as passed by the Commissioners Court of Fort Bend County, Texas, of the Minutes of the Commissioners Court of Fort Bend County, Texas, to the extent that such order is not inconsistent with Chapter 181, Vernon's Texas Statutes and Codes Annotated.

Notes:

1. Evidence of review by the Commissioners Court must be kept on the job site and failure to do so constitutes grounds for job shutdown.
2. Written notices are required:
 - a. 48 hours in advance of construction start up, and
 - b. When construction is completed and ready for final inspection, submit notification to Permit Administrator thru MyGovernmentOnline.org portal.
3. This permit expires one (1) year from date of permit if construction has not commenced.

On this 25th day of April, 2017, Upon Motion of Commissioner Meyers, seconded by Commissioner Morales, duly put and carried, it is ORDERED, ADJUDGED AND DECREED that said notice of said above purpose is hereby acknowledged by the Commissioners Court of Fort Bend County, Texas, and that said notice be placed on record according to the regulation order thereof.

Signature

By: Charles O. Ay
for County Engineer

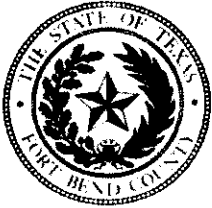
Presented to Commissioners Court and approved.

Date Recorded 5-2-2017 Comm. Court No. 13y

By: Mark Vogel
Drainage District Engineer/Manager

Clerk of Commissioners Court

By: Amelia Willes
Deputy



**PERMIT APPLICATION REVIEW FORM FOR
CABLE, CONDUIT, AND POLE LINE ACTIVITY
IN FORT BEND COUNTY**

**Fort Bend County
Engineering Department**
301 Jackson Suite 401
Richmond, Texas 77469
281.633.7500
Permits@fortbendcountytx.gov

- ☒ Right of Way Permit
☐ Commercial Driveway Permit

Permit No: 2017-11420

The following "Notice of Proposed Cable, Conduit, and/or Pole Line activity in Fort Bend County" and accompanying attachments have been reviewed and the notice conforms to appropriate regulations set by Commissioner's Court of Fort Bend County, Texas.

(1) COMPLETE APPLICATION FORM:

- ☒ a. Name of road, street, and/or drainage ditch affected.
☒ b. Vicinity map showing course of directions
☒ c. Plans and specifications

(2) BOND:

- ☐ County Attorney, approval when applicable.
- ☒ Perpetual bond currently posted. Bond No: Amount: \$50,000.00
- ☐ Performance bond submitted. Bond No: Amount:
- ☐ Cashier's Check Check No: Amount:

(3) DRAINAGE DISTRICT APPROVAL (WHEN APPLICABLE):

Mark Vogler
Drainage District Approval

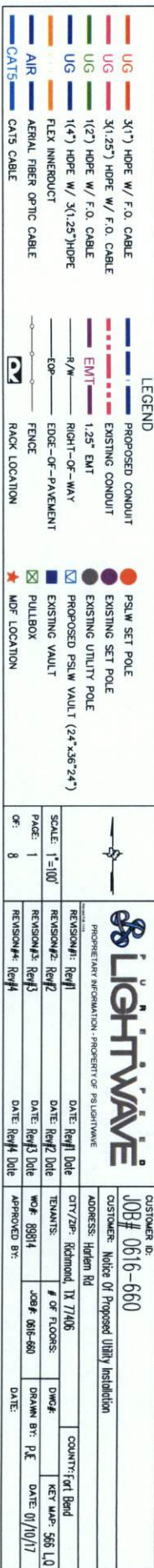
4/19/17
Date


We have reviewed this project and agree it meets minimum requirements.

Charles O. Ay

Permit Administrator

4/17/17
Date





LIGHTWAVE

PROFESSIONAL INFORMATION, PROPERTY OF LIGHTWAVE

CUSTOMER ID: **JOB# 0616-660**

REVISIONS: Rev#1

REVISIONS: Rev2

REVISIONS: Rev3

REVISIONS: Rev4

DATE: Rev#1 Date

DATE: Rev#2 Date

DATE: Rev#3 Date

DATE: Rev#4 Date

ADDRESS: **Hiram Rd**

CITY/STATE: **Richmond, TX 77406**

TELEPHONE: **WO# 88814**

APPROVED BY: _____

Notice of Proposed Utility Installation

CUSTOMER: _____

DATE: _____

DWG# _____

DATE: _____

COUNTY: **Ft. Bend**

DATE: **07/07/17**

DATE: _____

DATE: **07/07/17**

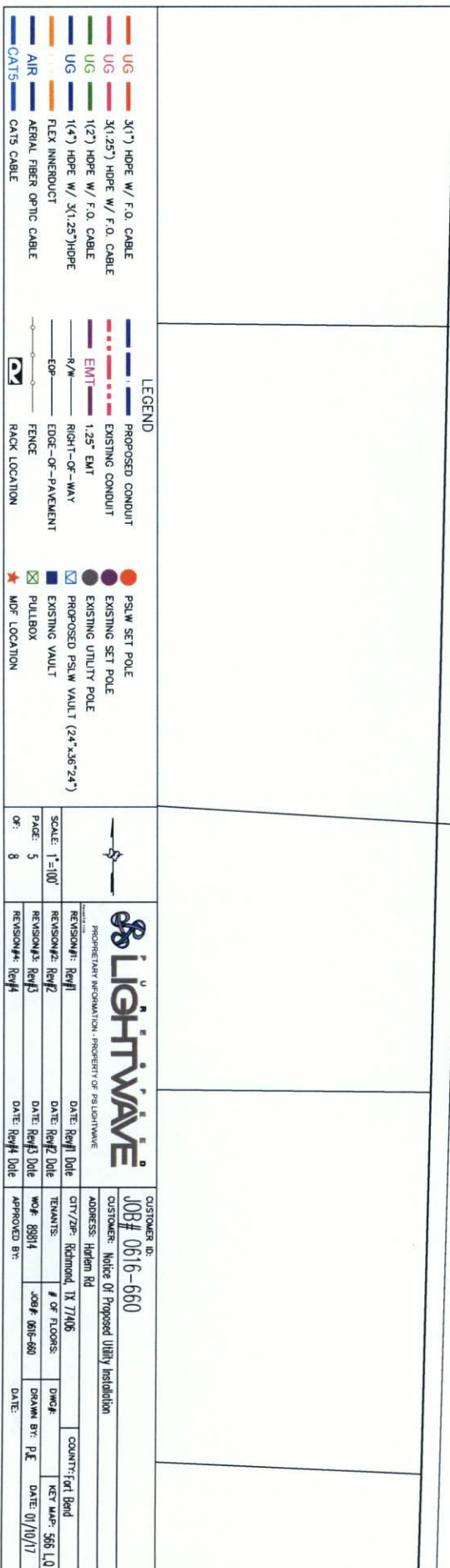


LEGEND	
	3(1") HDPE W/ F.O. CABLE
	3(1.25") HDPE W/ F.O. CABLE
	1(2") HDPE W/ F.O. CABLE
	1(4") HDPE W/ 3(1.25") HDPE
	FLEX INNERDUCT
	AERIAL FIBER OPTIC CABLE
	CATS
	PROPOSED CONDUIT
	EXISTING CONDUIT
	1.25" EMT
	R/W
	EDGE-OF-PAVEMENT
	FENCE
	RACK LOCATION
	PSLV SET POLE
	EXISTING SET POLE
	PROPOSED PSLV VAULT (24"x36"x24")
	EXISTING VAULT
	PULLBOX
	MDF LOCATION

	SCALE: 1"=100'
	PAGE: 2
	OF: 8

	CUSTOMER ID: JOB# 0616-660
PROPRIETARY INFORMATION - PROPERTY OF LIGHTWAVE	CUSTOMER: Notice Of Proposed Utility Installation
REVISION#1: Rev#1	DATE: Rev#1 Date
REVISION#2: Rev#2	DATE: Rev#2 Date
REVISION#3: Rev#3	DATE: Rev#3 Date
REVISION#4: Rev#4	DATE: Rev#4 Date
ADDRESS: Harlem Rd	CITY/ZIP: Richmond, TX 77406
WOF#: 88914	TECHNICALS: # OF FLOORS: DWG#:
APPROVED BY:	JOB#: 0616-660 DRAWN BY: P.E. DATE: 01/10/17
	COUNTRY: Fort Bend
	KEY MAP: 565 L.O

[illegible]




<div><div><div><div><div><div></div><div></div><div></div><div></div><div></div><div></div><div></div><div></div><div></div><div></div><div></div><div></div><div></div><div></div><div></div><div></div><div></div><div></div><div></div><div></div><div></div><div></div><div></div><div></div><div></div><div></div><div></div><div></div><div></div><div></div><div></div><div></div><div></div><div></div><div></div><div></div><div></div><div></div><div></div><div></div><div></div><div></div><div></div><div></div><div></div><div></div><div></div><div></div><div></div><div></div><div></div><div></div><div></div><div></div><div></div><div></div><div></div><div></div><div></div><div></div><div></div><div></div><div></div><div></div><div></div><div></div><div></div><div></div><div></div><div></div><div></div><div></div><div></div><div></div><div></div><div></div><div></div><div></div><div></div><div></div><div></div><div></div><div></div><div></div><div></div><div></div><div></div><div></div><div></div><div></div><div></div><div></div><div></div><div></div><div></div><div></div><div></div><div></div><div></div><div></div><div></div><div></div><div></div><div></div><div></div><div></div><div></div><div></div><div></div><div></div><div></div><div></div><div></div><div></div><div></div><div></div><div></div><div></div><div></div><div></div><div></div><div></div><div></div><div></div><div></div><div></div><div></div><div></div><div></div><div></div><div></div><div></div><div></div><div></div><div></div><div></div><div></div><div></div><div></div><div></div><div></div><div></div><div></div><div></div><div></div><div></div><div></div><div></div><div></div><div></div><div></div><div></div><div></div><div></div><div></div><div></div><div></div><div></div><div></div><div></div><div></div><div></div><div></div><div></div><div></div><div></div><div></div><div></div><div></div><div></div><div></div><div></div><div></div><div></div><div></div><div></div><div></div><div></div><div></div><div></div><div></div><div></div><div></div><div></div><div></div><div></div><div></div><div></div><div></div><div></div><div></div><div></div><div></div><div></div><div></div><div></div><div></div><div></div><div></div><div></div><div></div><div></div><div></div><div></div><div></div><div></div><div></div><div></div><div></div><div></div><div></div><div></div><div></div><div></div><div></div><div></div><div></div><div></div><div></div><div></div><div></div><div></div><div></div><div></div><div></div><div></div><div></div><div></div><div></div><div></div><div></div><div></div><div></div><div></div><div></div><div></div><div></div><div></div><div></div><div></div><div></div><div></div><div></div><div></div><div></div><div></div><div></div><div></div><div></div><div></div><div></div><div></div><div></div><div></div><div></div><div></div><div></div><div></div><div></div><div></div><div></div><div></div><div></div><div></div><div></div><div></div><div></div><div></div><div></div><div></div><div></div><div></div><div></div><div></div><div></div><div></div><div></div><div></div><div></div><div></div><div></div><div></div><div></div><div></div><div></div><div></div><div></div><div></div><div></div><div></div><div></div><div></div><div></div><div></div><div></div><div></div><div></div><div></div><div></div><div></div><div></div><div></div><div></div><div></div><div></div><div></div><div></div><div></div><div></div><div></div><div></div><div></div><div></div><div></div><div></div><div></div><div></div><div></div><div></div><div></div><div></div><div></div><div></div><div></div><div></div><div></div><div></div><div></div><div></div><div></div><div></div><div></div><div></div><div></div><div></div><div></div><div></div><div></div><div></div><div></div><div></div><div></div><div></div><div></div><div></div><div></div><div></div><div></div><div></div><div></div><div></div><div></div><div></div><div></div><div></div><div></div><div></div><div></div><div></div><div></div><div></div><div></div><div></div><div></div><div></div><div></div><div></div><div></div><div></div><div></div><div></div><div></div><div></div><div></div><div></div><div></div><div></div><div></div><div></div><div></div><div></div><div></div><div></div><div></div><div></div><div></div><div></div><div></div><div></div><div></div><div></div><div></div><div></div><div></div><div></div><div></div><div></div><div></div><div></div><div></div><div></div><div></div><div></div><div></div><div></div><div></div><div></div><div></div><div></div><div></div><div></div><div></div><div></div><div></div><div></div><div></div><div></div><div></div><div></div><div></div><div></div><div></div><div></div><div></div><div></div><div></div><div></div><div></div><div></div><div></div><div></div><div></div><div></div><div></div><div></div><div></div><div></div><div></div><div></div><div></div><div></div><div></div><div></div><div></div><div></div><div></div><div></div><div></div><div></div><div></div><div></div><div></div><div></div><div></div><div></div><div></div><div></div><div></div><div></div><div></div><div></div><div></div><div></div><div></div><div></div><div></div><div></div><div></div><div></div><div></div><div></div><div></div><div></div><div></div><div></div><div></div><div></div><div></div><div></div><div></div><div></div><div></div><div></div><div></div><div></div><div></div><div></div><div></div><div></div><div></div><div></div><div></div><div></div><div></div><div></div><div></div><div></div><div></div><div></div><div></div><div></div><div></div><div></div><div></div><div></div><div></div><div></div><div></div><div></div><div></div><div></div><div></div><div></div><div></div><div></div><div></div><div></div><div></div><div></div><div></div><div></div><div></div><div></div><div></div><div></div><div></div><div></div><div></div><div></div><div></div><div></div><div></div><div></div><div></div><div></div><div></div><div></div><div></div><div></div><div></div><div></div><div></div><div></div><div></div><div></div><div></div><div></div><div></div><div></div><div></div><div></div><div></div><div></div><div></div><div></div><div></div><div></div><div></div><div></div><div></div><div></div><div></div><div></div><div></div><div></div><div></div><div></div><div></div><div></div><div></div><div></div><div></div><div></div><div></div><div></div><div></div><div></div><div></div><div></div><div></div><div></div><div></div><div></div><div></div><div></div><div></div><div></div><div></div><div></div><div></div><div></div><div></div><div></div><div></div><div></div><div></div><div></div><div></div><div></div><div></div><div></div><div></div><div></div><div></div><div></div><div></div><div></div><div></div><div></div><div></div><div></div><div></div><div></div><div></div><div></div><div></div><div></div><div></div><div></div><div></div><div></div><div></div><div></div><div></div><div></div><div></div><div></div><div></div><div></div><div></div><div></div><div></div><div></div><div></div><div></div><div></div><div></div><div></div><div></div><div></div><div></div><div></div><div></div><div></div><div></div><div></div><div></div><div></div><div></div><div></div><div></div><div></div><div></div><div></div><div></div><div></div><div></div><div></div><div></div><div></div><div></div><div></div><div></div><div></div><div></div><div></div><div></div><div></div><div></div><div></div><div></div><div></div><div></div><div></div><div></div><div></div><div></div><div></div><div></div><div></div><div></div><div></div><div></div><div></div><div></div><div></div><div></div><div></div><div></div><div></div><div></div><div></div><div></div><div></div><div></div><div></div><div></div><div></div><div></div><div></div><div></div><div></div><div></div><div></div><div></div><div></div><div></div><div></div><div></div><div></div><div></div><div></div><div></div><div></div><div></div><div></div><div></div><div></div><div></div><div></div><div></div><div></div><div></div><div></div><div></div><div></div><div></div><div></div><div></div><div></div><div></div><div></div><div></div><div></div><div></div><div></div><div></div><div></div><div></div><div></div><div></div><div></div><div></div><div></div><div></div><div></div><div></div><div></div><div></div><div></div><div></div><div></div><div></div><div></div><div></div><div></div><div></div><div></div><div></div><div></div><div></div><div></div><div></div><div></div><div></div><div></div><div></div><div></div><div></div><div></div><div></div><div></div><div></div><div></div><div></div><div></div><div></div><div></div><div></div><div></div><div></div><div></div><div></div><div></div><div></div><div></div><div></div><div></div><div></div><div></div><div></div><div></div><div></div><div></div><div></div><div></div><div></div><div></div><div></div><div></div><div></div><div></div><div></div><div></div><div></div><div></div><div></div><div></div><div></div><div></div><div></div><div></div><div></div><div></div><div></div><div></div><div></div><div></div><div></div><div></div><div></div><div></div><div></div><div></div><div></div><div></div><div></div><div></div><div></div><div></div><div></div><div></div><div></div><div></div><div></div><div></div><div></div><div></div><div></div><div></div><div></div><div></div><div></div><div></div><div></div><div></div><div></div><div></div><div></div><div></div><div></div><div></div><div></div><div></div><div></div><div></div><div></div><div></div><div></div><div></div><div></div><div></div><div></div><div></div><div></div><div></div><div></div><div></div><div></div><div></div><div></div><div></div><div></div><div></div><div></div><div></div><div></div><div></div><div></div><div></div><div></div><div></div><div></div><div></div><div></div><div></div><div></div><div></div><div></div><div></div><div></div><div></div><div></div><div></div><div></div><div></div><div></div><div></div><div></div><div></div><div></div><div></div><div></div><div></div><div></div><div></div><div></div><div></div><div></div><div></div><div></div><div></div><div></div><div></div><div></div><div></div><div></div><div></div><div></div><div></div><div></div><div></div><div></div><div></div><div></div><div></div><div></div><div></div><div></div><div></div><div></div><div></div><div></div><div></div><div></div><div></div><div></div><div></div><div></div><div></div><div></div><div></div><div></div><div></div><div></div><div></div><div></div><div></div><div></div><div></div><div></div><div></div><div></div><div></div><div></div><div></div><div></div><div></div><div></div><div></div><div></div><div></div><div></div><div></div><div></div><div></div><div></div><div></div><div></div><div></div><div></div><div></div><div></div><div></div><div></div><div></div><div></div><div></div><div></div><div></div><div></div><div></div><div></div><div></div><div></div><div></div><div></div><div></div><div></div><div></div><div></div><div></div><div></div><div></div><div></div><div></div><div></div><div></div><div></div><div></div><div></div><div></div><div></div><div></div><div></div><div></div><div></div><div></div><div></div><div></div><div></div><div></div><div></div><div></div><div></div><div></div><div></div><div></div><div></div><div></div><div></div><div></div><div></div><div></div><div></div><div></div><div></div><div></div><div></div><div></div><div></div><div></div><div></div><div></div><div></div><div></div><div></div><div></div><div></div><div></div><div></div><div></div><div></div><div></div><div></div><div></div><div></div><div></div><div></div><div></div><div></div><div></div><div></div><div></div><div></div><div></div><div></div><div></div><div></div><div></div><div></div><div></div><div></div><div></div><div></div><div></div><div></div><div></div><div></div><div></div><div></div><div></div><div></div><div></div><div></div><div></div><div></div><div></div><div></div><div></div><div></div><div></div><div></div><div></div><div></div><div></div><div></div><div></div><div></div><div></div><div></div><div></div><div></div><div></div><div></div><div></div><div></div><div></div><div></div><div></div><div></div><div></div><div></div><div></div><div></div><div></div><div></div><div></div><div></div><div></div><div></div><div></div><div></div><div></div><div></div><div></div><div></div><div></div><div></div><div></div><div></div><div></div><div></div><div></div><div></div><div></div><div></div><div></div><div></div><div></div><div></div><div></div><div></div><div></div><div></div><div></div><div></div><div></div><div></div><div></div><div></div><div></div><div></div><div></div><div></div><div></div><div></div><div></div><div></div><div></div><div></div><div></div><div></div><div></div><div></div><div></div><div></div><div></div><div></div><div></div><div></div><div></div><div></div><div></div><div></div><div></div><div></div><div></div><div></div><div></div><div></div><div></div><div></div><div></div><div></div><div></div><div></div><div></div><div></div><div></div><div></div><div></div><div></div><div></div><div></div><div></div><div></div><div></div><div></div><div></div><div></div><div></div><div></div><div></div><div></div><div></div><div></div><div></div><div></div><div></div><div></div><div></div><div></div><div></div><div></div><div></div><div></div><div></div><div></div><div></div><div></div><div></div><div></div><div></div><div></div><div></div><div></div><div></div><div></div><div></div><div></div><div></div><div></div><div></div><div></div><div></div><div></div><div></div><div></div><div></div><div></div><div></div><div></div><div></div><div></div><div></div><div></div><div></div><div></div><div></div><div></div><div></div><div></div><div></div><div></div></div></div></div></div></div>
--



LEGEND	
UG	3(1") HOPE W/ F.O. CABLE
UG	3(1.25") HOPE W/ F.O. CABLE
UG	1(2") HOPE W/ F.O. CABLE
UG	1(4") HOPE W/ 3(1.25")HOPE
UG	FLEX INNERDUCT
AIR	AERIAL FIBER OPTIC CABLE
CATS	CATS CABLE
---	PROPOSED CONDUIT
---	EXISTING CONDUIT
---	1.25" EMT
---	R/W
---	RIGHT-OF-WAY
---	EDGE-OF-PAVEMENT
---	FENCE
---	RACK LOCATION
●	PS/W SET POLE
●	EXISTING SET POLE
●	EXISTING UTILITY POLE
●	PROPOSED PS/W VAULT (24"x36"x24")
□	EXISTING VAULT
□	PULLBOX
★	MOF LOCATION

SCALE: 1"=100'	
PAGE: 6	
OF: 8	
REVISION#1: Rev1	
REVISION#2: Rev2	
REVISION#3: Rev3	
REVISION#4: Rev4	
DATE: Rev1 Date	
DATE: Rev2 Date	
DATE: Rev3 Date	
DATE: Rev4 Date	
CITY/ZIP: Richmond, TX 77106	
COUNTY: Fort Bend	
WCA: 88914	
JOB#: 0616-660	
DRAWN BY: P.E.	
DATE: 07/10/17	
APPROVED BY:	

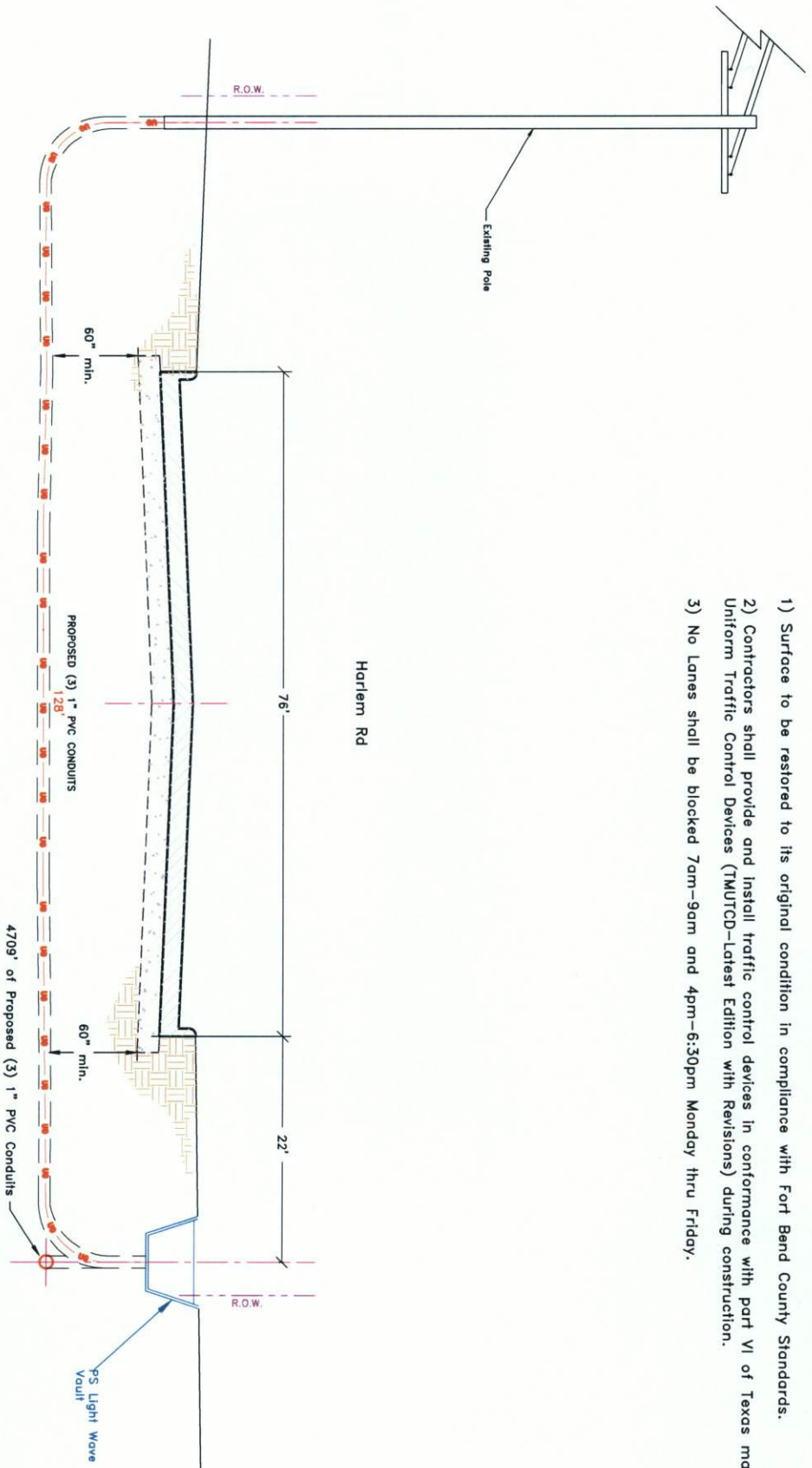


PROPRIETARY INFORMATION - PROPERTY OF P/LIGHTWAVE

CUSTOMER ID: JOB# 0616-660	
CUSTOMER: Notice Of Proposed Utility Installation	
ADDRESS: Hickory Rd	
TENANTS:	
# OF FLOORS:	
DWG#:	
KEY MAP: S&S L.O	

General Notes:

- 1) Surface to be restored to its original condition in compliance with Fort Bend County Standards.
- 2) Contractors shall provide and install traffic control devices in conformance with part VI of Texas manual on Uniform Traffic Control Devices (TMUTCD—Latest Edition with Revisions) during construction.
- 3) No Lanes shall be blocked 7am–9am and 4pm–6:30pm Monday thru Friday.

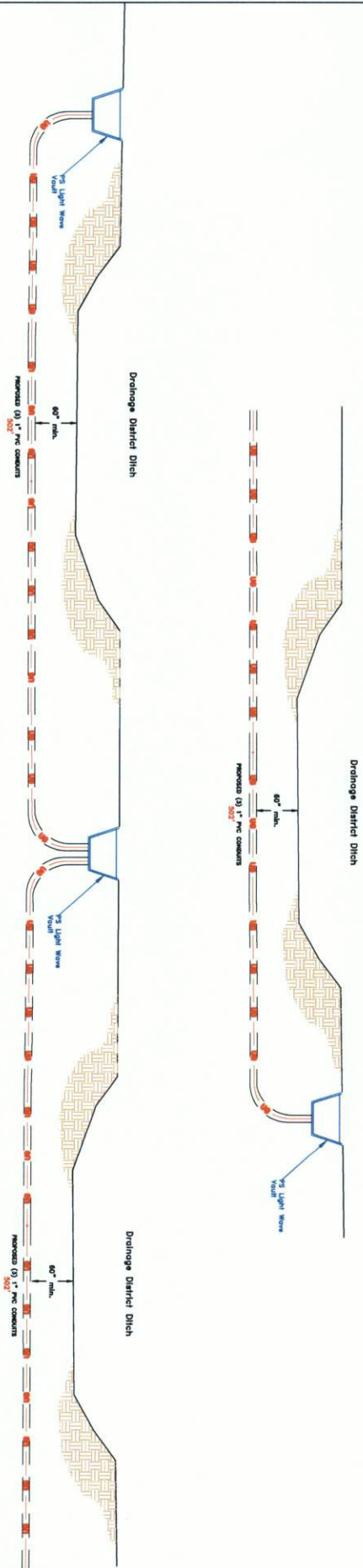


UG	3(1") PVC W/ F.O. CABLE	PROPOSED CONDUIT	PSLW SET POLE
UG	3(1.25") PVC W/ F.O. CABLE	EXISTING CONDUIT	EXISTING SET POLE
UG	1(2") PVC W/ F.O. CABLE	1.25" EMT	EXISTING UTILITY POLE
UG	1(4") HDPE W/ 3(1.25") PVC	R/W	PROPOSED PSLW VAULT (24"x36"x24")
UG	FLEX INNERDUCT	EDGE-OF-PAVEMENT	EXISTING VAULT
AIR	AERIAL FIBER OPTIC CABLE	FENCE	PULLBOX
CAT5	CAT5 CABLE	RACK LOCATION	MDF LOCATION

SCALE: N.T.S.	REVISION#1: Rev#1	DATE: Rev#1 Date	Job# 0616-660
PAGE: 7	REVISION#2: Rev#2	DATE: Rev#2 Date	Address: Harlem Rd
OF: 8	REVISION#3: Rev#3	DATE: Rev#3 Date	Description: Notice of Proposed Utility Installation
	REVISION#4: Rev#4	DATE: Rev#4 Date	CITY/ZIP: Richmond, TX 77066
			TENANTS: COUNTY: Fort Bend
			WOP: 88914
			Job# 0616-660 R/W DRAWN BY: P.E. DATE: 01/10/17
			APPROVED BY: DATE:

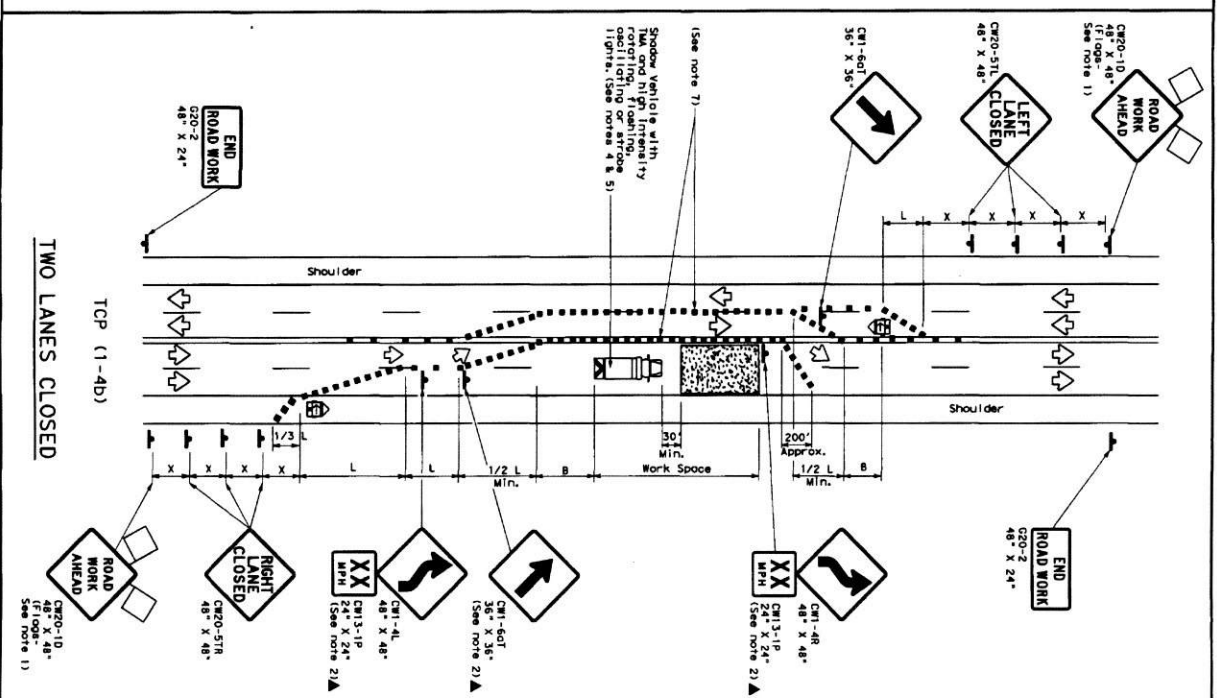
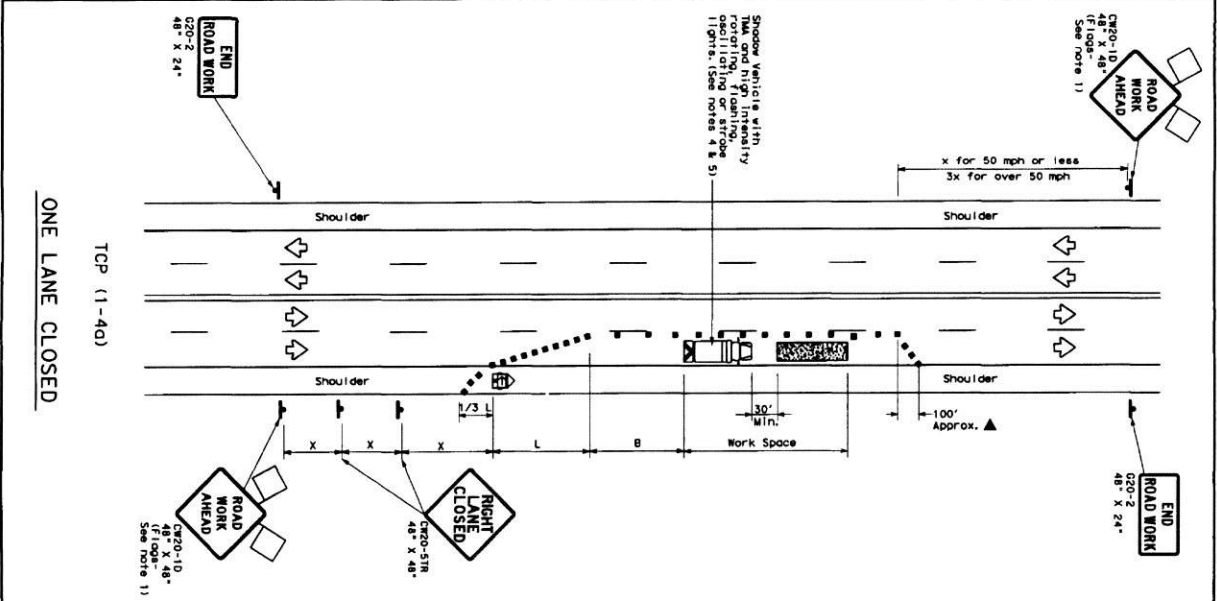
General Notes:

- 1) Surface to be restored to its original condition in compliance with Fort Bend County Standards.
- 2) Contractors shall provide and install traffic control devices in conformance with part VI of Texas manual on Uniform Traffic Control Devices (TMUTCD—Latest Edition with Revisions) during construction.
- 3) No Lanes shall be blocked 7am–9am and 4pm–6:30pm Monday thru Friday.



LEGEND		Job#	
UG	3(1") PVC W/ F.O. CABLE	PROPOSED CONDUIT	PSLW SET POLE
UG	3(1.25") PVC W/ F.O. CABLE	EXISTING CONDUIT	EXISTING SET POLE
UG	1(2") PVC W/ F.O. CABLE	EMT	EXISTING UTILITY POLE
UG	1(4") HDPE W/ 3(1.25") PVC	R/W	PROPOSED PSLW VAULT (24"x36"x24")
UG	FLEX INNERDUCT	EDGE-OF-WAY	EXISTING VAULT
AIR	AERIAL FIBER OPTIC CABLE	EDGE-OF-PAVEMENT	PULLBOX
CATS	CATS CABLE	FENCE	MDF LOCATION
		RACK LOCATION	
		SCALE: N.T.S.	
		PAGE: 8	
		OF: 8	
		REVISION#1: P.E.	DATE: 03/07/17
		REVISION#2: Rev#2	DATE: Rev#2 Date
		REVISION#3: Rev#3	DATE: Rev#3 Date
		REVISION#4: Rev#4	DATE: Rev#4 Date
		Job#	0616-660
		Description:	Notice Of Proposed Utility Installation
		Address:	Hidden Rd
		City/Zip:	Richmond, TX 77406
		Tenant:	
		WO#:	88914
		Job#:	0616-660 P.W. DRAWN BY: P.E.
		DATE:	DATE: 07/10/17
		APPROVED BY:	

DATE: FILE:



LEGEND

Symbol	Description
XXXX	Type 3 Barricade
Truck	Heavy Work Vehicle
Trailer	Trailer Mounted Attenuator (TMA)
Flashing Arrow Board	Portable Changeable Message Sign (PCMS)
Sign	Traffic Flow
Flag	Flagger

GENERAL NOTES

- Flare attached to signs where shown are REQUIRED.
- All traffic control devices illustrated are REQUIRED, except those devoted or for four-lane roads may be omitted when stored elsewhere in the D.O.s.
- The CRO-10 "ROAD WORK AHEAD" sign may be repeated if the visibility of the work zone is less than 1500 feet.
- A Shadow Vehicle with a TMA should be used anytime it can be positioned upstream of the work zone. The TMA should be used without obstructing the performance or quality of the work zone. The TMA should be present but road or work conditions require the traffic control to remain in place. Type 3 barricades or other channelizing devices may be substituted for the Shadow Vehicle and TMA. TMA may be positioned off the paved surface, near to those shown in order to protect wider work spaces.
- TCP (1-4a) is used for a left lane closure, CRO-51L "LEFT LANE CLOSED" sign should be used for a right lane closure. The work space from opposing traffic in the arrow point placed in the closed lane near the end of the merging taper.
- TCP (1-4b)
- Where traffic is directed over a white centerline, channelizing devices which separate two-way traffic should be spaced on tapers of 20' or 15' where S is the speed in mph, and for tangent sections, at 1/2S for the areas of conflicting markings, not the entire work zone.

TYPICAL USAGE

MOBILE	SHORT	INTERMEDIATE	LONG TERM
✓	✓	✓	✓
✓	✓	✓	✓

CONVENTIONAL ROAD ONLY

* Taper lengths have been rounded off.

L=Length of Taper (ft) W=Width of Offset (ft) S=Posted Speed (mph)

Speed (mph)	Formula	Minimum Taper Lengths (ft)	Minimum Spacing of Signs (ft)	Minimum Spacing of Signs (ft) for Barrier
10	10' x 12'	100	120	120
15	15' x 18'	150	180	180
20	20' x 24'	200	240	240
25	25' x 30'	250	300	300
30	30' x 36'	300	360	360
35	35' x 42'	350	420	420
40	40' x 48'	400	480	480
45	45' x 54'	450	540	540
50	50' x 60'	500	600	600
55	55' x 66'	550	660	660
60	60' x 72'	600	720	720
65	65' x 78'	650	780	780
70	70' x 84'	700	840	840
75	75' x 90'	750	900	900

TRAFFIC CONTROL PLAN
LANE CLOSURES ON MULTILANE CONVENTIONAL ROADS

TCP (1-4) - 12

© 2007 TEXAS DEPARTMENT OF TRANSPORTATION

1-12

1-13

1-14

1-15