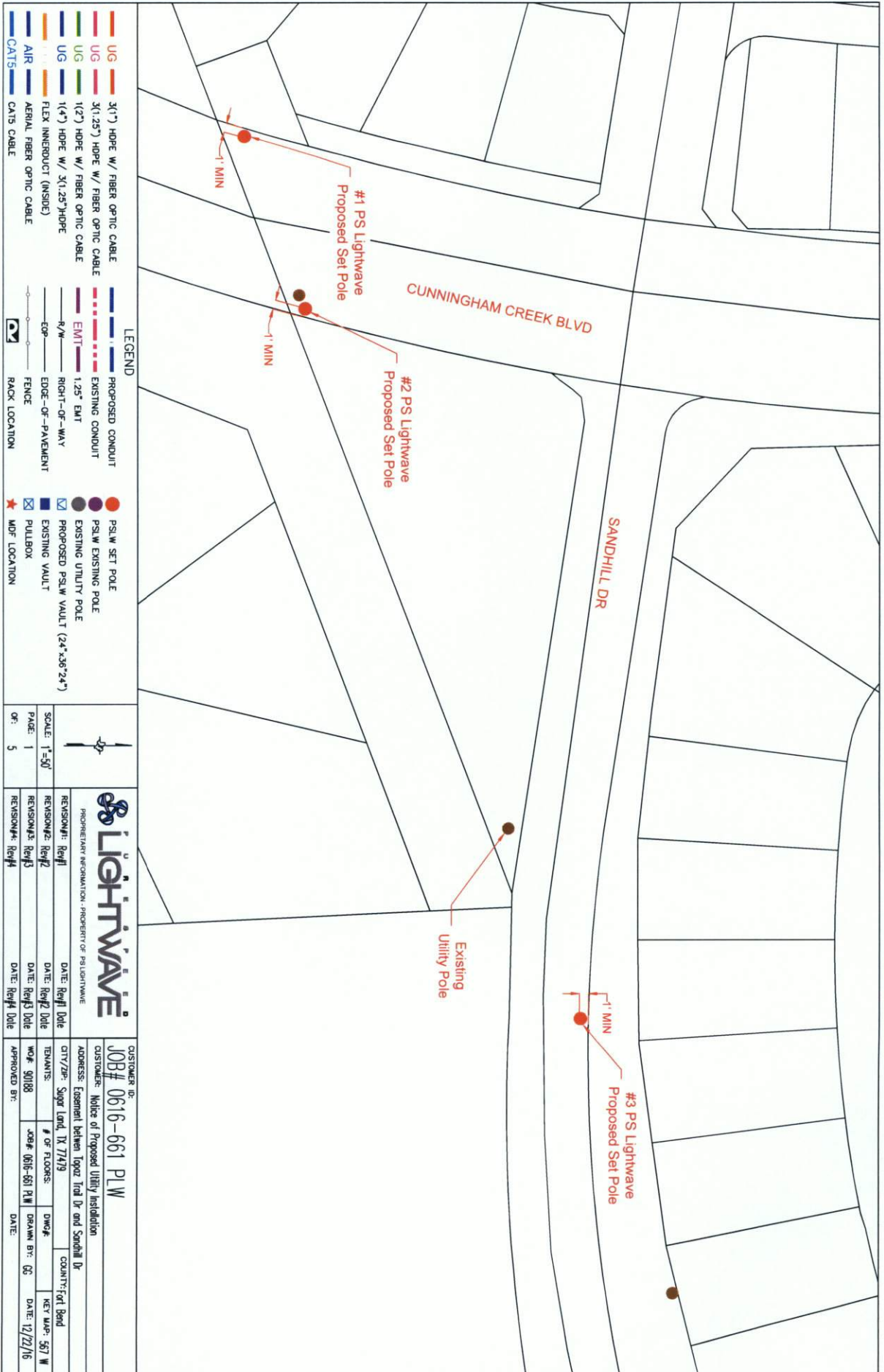


Deputy

Date \_\_\_\_\_





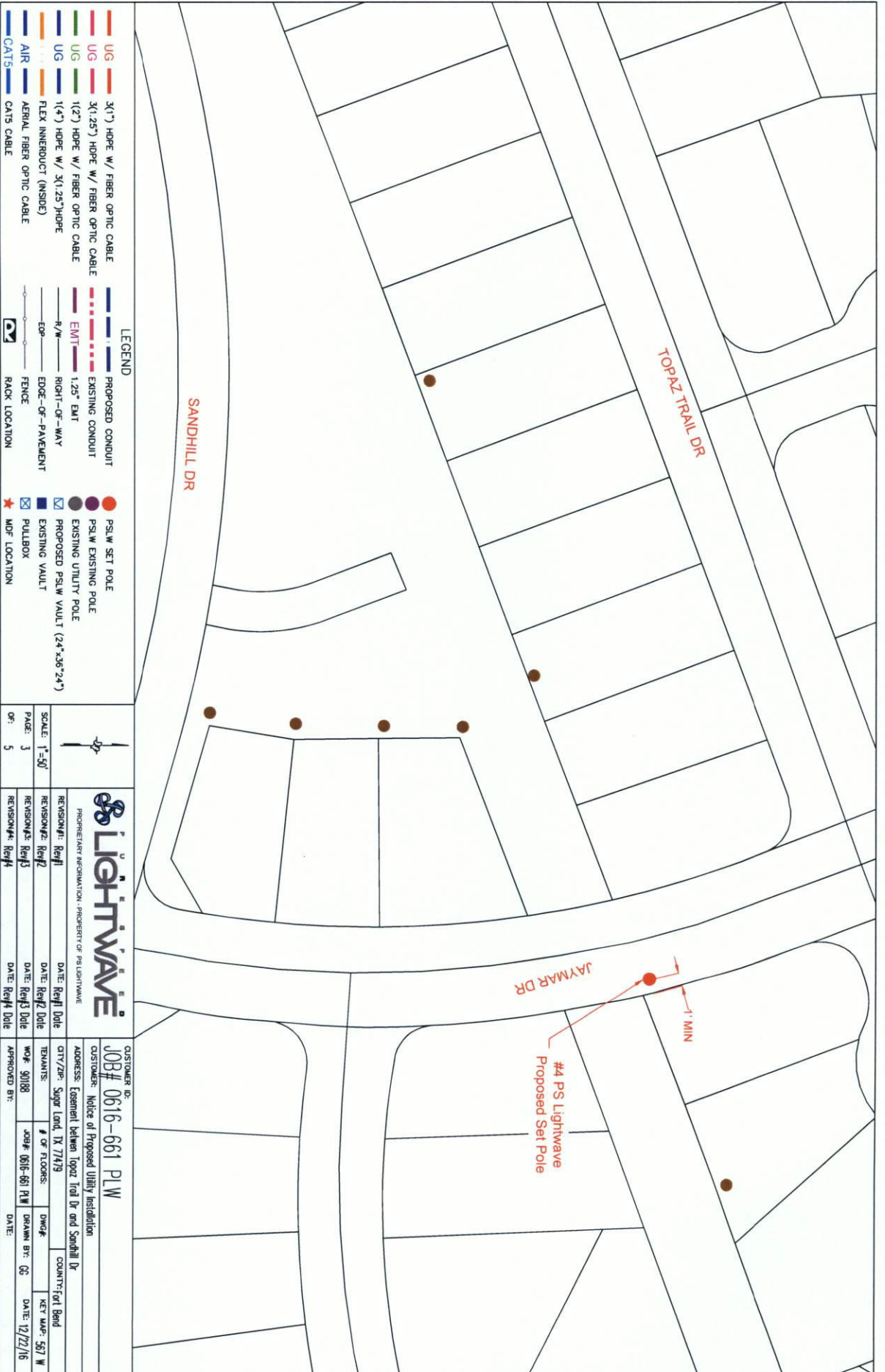


**LEGEND**

UG	3(1") HOPE W/ FIBER OPTIC CABLE	---	PROPOSED CONDUIT
UG	3(1.25") HOPE W/ FIBER OPTIC CABLE	---	EXISTING CONDUIT
UG	1(2") HOPE W/ FIBER OPTIC CABLE	---	EMT 1.25" EMT
UG	1(4") HOPE W/ 3(1.25") HOPE	---	R/W RIGHT-OF-WAY
---	FLEX INNERDUCT (INSIDE)	---	EDGE-OF-PAVEMENT
---	AIR AERIAL FIBER OPTIC CABLE	---	FENCE
---	CAT5 CAT5 CABLE	---	RACK LOCATION

				CUSTOMER ID: JOB# 0616-661 PLW	
SCALE: 1"=50'		REVISION#1: Rev#1		ADDRESS: Easement between Lopez Trail Dr and Sandhill Dr	
PAGE: 2		REVISION#2: Rev#2		CITY/ZIP: Sugar Land, TX 77479	
OF: 5		REVISION#3: Rev#3		TENANTS:	
		REVISION#4: Rev#4		# OF FLOORS:	
				DWG#:	
				JCS# 0616-661 PLW	
				DRAWN BY: GC	
				DATE: 12/27/16	
				APPROVED BY:	









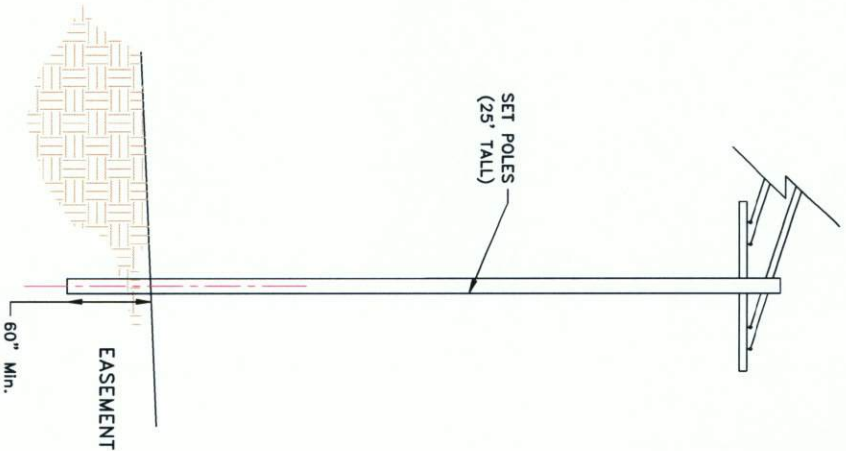
**LEGEND**

UG	3/1" HOPE W/ FIBER OPTIC CABLE	---	PROPOSED CONDUIT	●	PSLW SET POLE
UG	3/1.25" HOPE W/ FIBER OPTIC CABLE	---	EXISTING CONDUIT	●	PSLW EXISTING POLE
UG	1/2" HOPE W/ FIBER OPTIC CABLE	---	EMT 1.25" EMT	●	EXISTING UTILITY POLE
UG	1/4" HOPE W/ 3/1.25" HOPE	---	R/W	●	PROPOSED PSLW VAULT (24"x36"x24")
UG	FLEX INNERDUCT (INSIDE)	---	EDGE-OF-WAY	□	EXISTING VAULT
AIR	AERIAL FIBER OPTIC CABLE	---	EDGE-OF-PAVEMENT	□	PULLBOX
CATS	CATS CABLE	---	FENCE	★	MDF LOCATION
		---	RACK LOCATION		

		<b>CUSTOMER ID:</b> <b>JOB# 0616-661 PLW</b>	
<small>PROHIBITARY INFORMATION - PROPERTY OF LIGHTWAVE</small>		<b>CUSTOMER:</b> Notice of Proposed Utility Installation	
<b>REVISION#1:</b> Rev#1 <b>REVISION#2:</b> Rev#2 <b>REVISION#3:</b> Rev#3 <b>REVISION#4:</b> Rev#4	<b>DATE:</b> Rev#1 Date <b>DATE:</b> Rev#2 Date <b>DATE:</b> Rev#3 Date <b>DATE:</b> Rev#4 Date	<b>CITY/ZIP:</b> Sugar Land, TX 77479 <b>COUNTY:</b> Fort Bend	<b>APPROVED BY:</b> DATE:
<b>SCALE:</b> 1"=50' <b>PAGE:</b> 4 <b>OF:</b> 5	<b>WOF:</b> 50188 <b>JOB#:</b> 0616-661 PLW	<b># OF FLOORS:</b> <b>DWG#:</b> <b>DRAWN BY:</b> GS <b>DATE:</b> 12/22/16	<b>KEY MAP:</b> 567 W

**General Notes:**

- 1) Surface to be restored to its original condition in compliance with Fort Bend County Standards.
- 2) Contractors shall provide and install traffic control devices in conformance with part VI of Texas manual on Uniform Traffic Control Devices (TMUTCD—Latest Edition with Revisions) during construction.
- 3) No Lanes shall be blocked 7am–9am and 4pm–6:30pm Monday thru Friday.



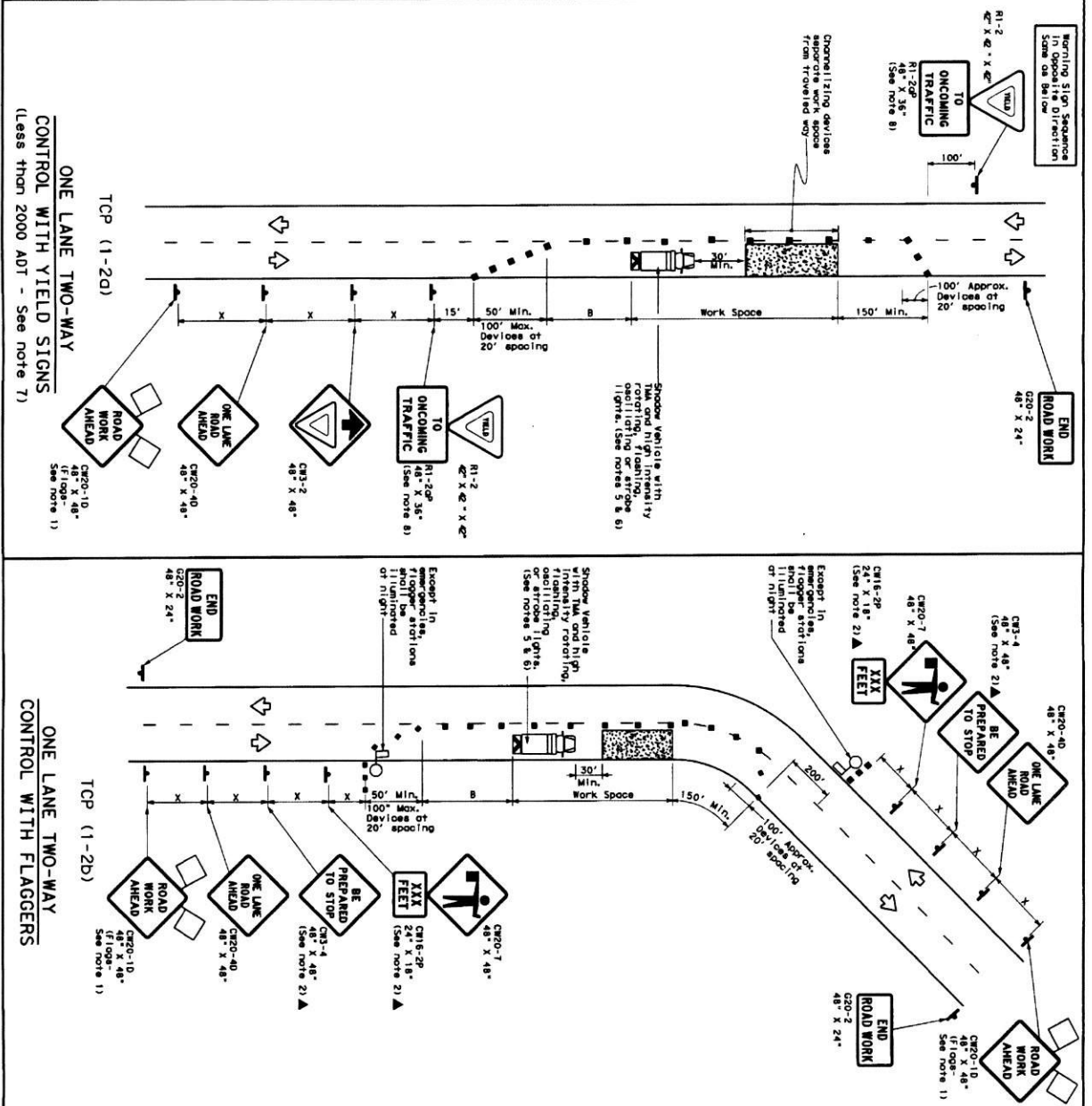
LEGEND	
UG	3(1") HDPE W/ FIBER OPTIC CABLE
UG	3(1.25") HDPE W/ FIBER OPTIC CABLE
UG	1(2") HDPE W/ FIBER OPTIC CABLE
UG	1(4") HDPE W/ 3(1.25") HDPE
UG	FLEX INNERDUCT (INSIDE)
AIR	AERIAL FIBER OPTIC CABLE
CAT5	CAT5 CABLE
---	PROPOSED CONDUIT
---	EXISTING CONDUIT
---	1.25" EMT
---	R/W
---	RIGHT-OF-WAY
---	EDGE-OF-PAVEMENT
---	FENCE
---	RACK LOCATION
●	PSLW SET POLE
●	EXISTING SET POLE
●	EXISTING UTILITY POLE
●	PROPOSED PSLW VAULT (24"x36"x24")
□	EXISTING VAULT
□	PULLBOX
★	MDF LOCATION

REVISION#1	DATE: Rev#1 Date
REVISION#2	DATE: Rev#2 Date
REVISION#3	DATE: Rev#3 Date
REVISION#4	DATE: Rev#4 Date
SCALE: N.T.S.	
PAGE: 5	
OF: 5	
<b>Job# 0616-661 PLW</b>	
Description: Easement between Lopez Road Dr and Sandhill Dr	
CITY/Zip: Sugar Land, TX 77479	COUNTY: Fort Bend
WOF: 90188	# OF FLOORS: 1
DATE: 0616-661	DWG#: 0616-661
APPROVED BY: [Signature]	DATE: 12/22/16



DISCLAIMER: The use of this standard is governed by the "Texas Engineering Practice Act". No warranty of any kind is made by TxDOT for any purpose whatsoever. TxDOT assumes no responsibility for incorrect results or damages resulting from its use.

DATE: FILE:



LEGEND			
Symbol	Description	Symbol	Description
XXXXXX	Type 3 Barricade	●	Channelizing Devices
⬇	Heavy Work Vehicle	⬇	Truck Mounted Attenuator (TMA)
⬇	Trailer Mounted Attenuator (TMA)	⬇	Portable Changeable Message Sign (PCMS)
⬇	Flashing Arrow Board	⬇	Traffic Flow
⬇	Sign	⬇	Flagger
⬇	Flag	⬇	Flagger

Posted Speed (mph)	Minimum Taper Length (ft)	Minimum Spacing of Devices (ft)	Minimum Spacing of Signs (ft)	Minimum Spacing of Buffers (ft)	Minimum Spacing of Stopping Distances (ft)
10	11	12	10	10	10
15	15	15	15	15	15
20	20	20	20	20	20
25	25	25	25	25	25
30	30	30	30	30	30
35	35	35	35	35	35
40	40	40	40	40	40
45	45	45	45	45	45
50	50	50	50	50	50
55	55	55	55	55	55
60	60	60	60	60	60
65	65	65	65	65	65
70	70	70	70	70	70
75	75	75	75	75	75
80	80	80	80	80	80
85	85	85	85	85	85
90	90	90	90	90	90
95	95	95	95	95	95
100	100	100	100	100	100

**GENERAL NOTES**

1. Flag attached to signs where shown are REQUIRED.
2. All traffic control devices illustrated are REQUIRED, except those denoted with the maintenance work, when approved by the Engineer.
3. The R1-20 "BE PREPARED TO STOP" sign may be installed after the R1-20 "YIELD" sign.
4. The R1-20 "YIELD" sign may be installed after the R1-20 "BE PREPARED TO STOP" sign.
5. The R1-20 "YIELD" sign may be installed after the R1-20 "BE PREPARED TO STOP" sign.
6. The R1-20 "YIELD" sign may be installed after the R1-20 "BE PREPARED TO STOP" sign.
7. The R1-20 "YIELD" sign may be installed after the R1-20 "BE PREPARED TO STOP" sign.
8. The R1-20 "YIELD" sign may be installed after the R1-20 "BE PREPARED TO STOP" sign.
9. The R1-20 "YIELD" sign may be installed after the R1-20 "BE PREPARED TO STOP" sign.
10. The R1-20 "YIELD" sign may be installed after the R1-20 "BE PREPARED TO STOP" sign.
11. The R1-20 "YIELD" sign may be installed after the R1-20 "BE PREPARED TO STOP" sign.
12. The R1-20 "YIELD" sign may be installed after the R1-20 "BE PREPARED TO STOP" sign.
13. The R1-20 "YIELD" sign may be installed after the R1-20 "BE PREPARED TO STOP" sign.

**TYPICAL USAGE**

MOBILE	SHORT STATION	INTERMEDIATE STATION	LONG STATION
✓	✓	✓	✓

**Traffic Department of Transportation**

**TRAFFIC CONTROL PLAN**

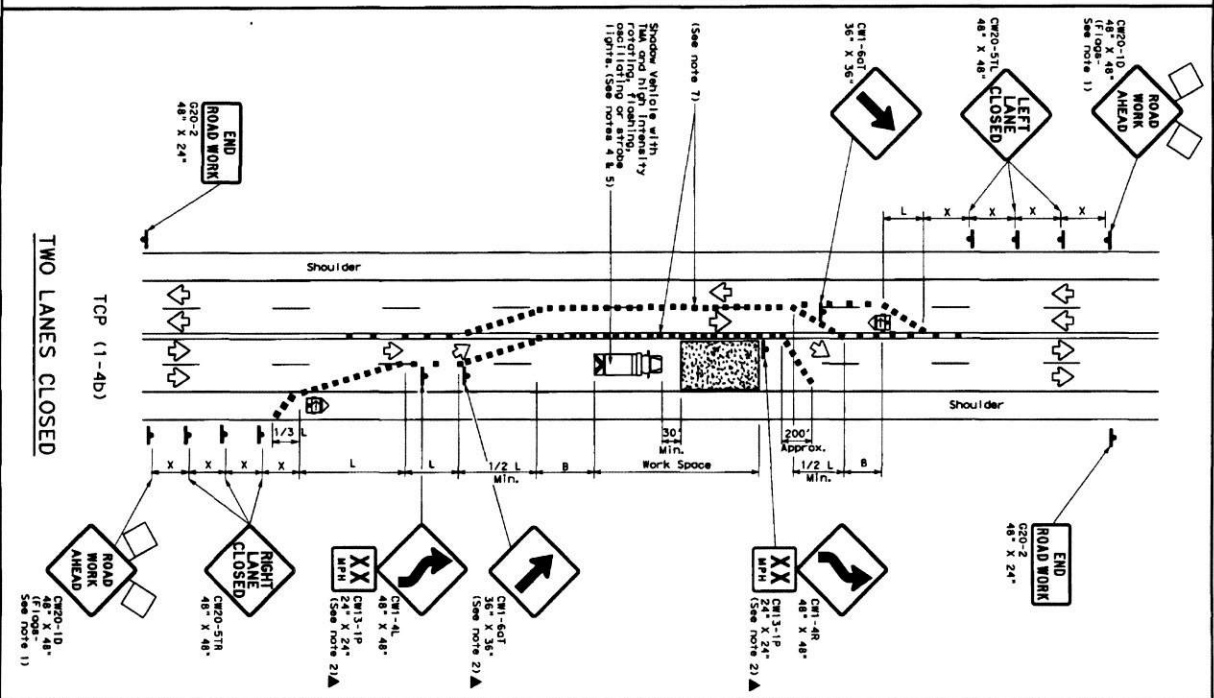
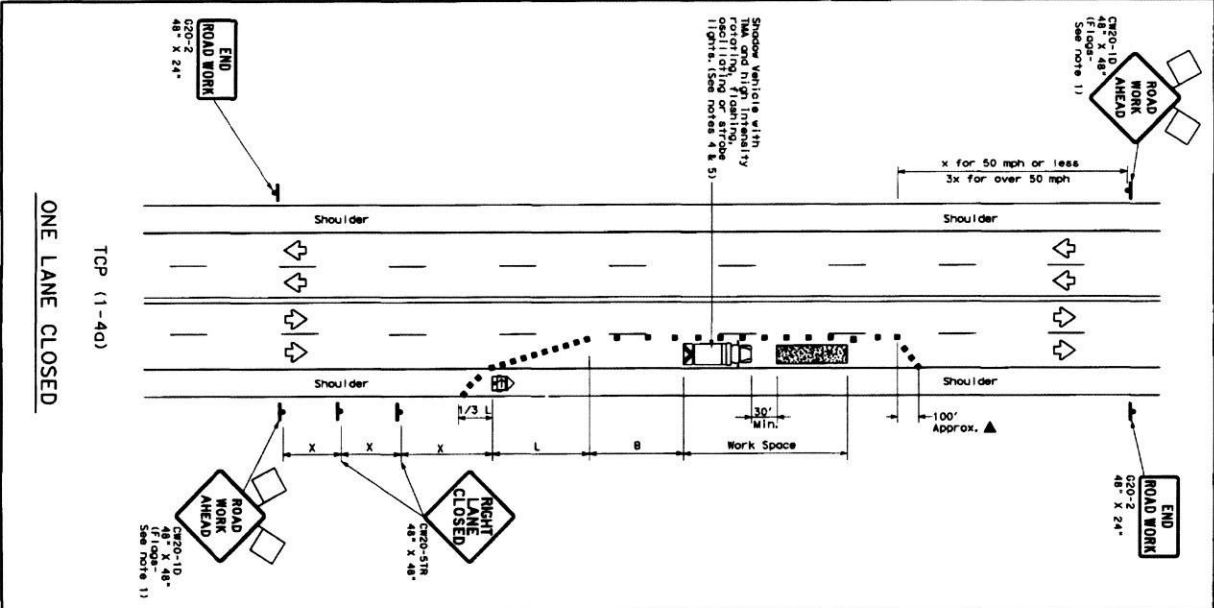
**ONE-LANE TWO-WAY**

**TRAFFIC CONTROL**

**TCP (1-2) -12**



DATE:  
FILE:



**LEGEND**

Symbol	Description	Symbol	Description
XXXXXX	Type 3 Barricade	■	Channelizing Device
Truck	Heavy Work Vehicle	Truck	Truck Mounted Attenuator (TMA)
Tractor	Tractor Mounted Flaming Arrow Board	Tractor	Portable Changeable Message Sign (PCMS)
Sign	Sign	Tractor	Traffic Flow
Flag	Flag	Tractor	Tractor

**GENERAL NOTES**

1. General notes to signs where shown are REQUIRED.
2. All traffic control devices illustrated are REQUIRED, except those identified with the word "optional" which may be omitted when stored elsewhere in the plans.
3. The CRD-10 "ROAD WORK AHEAD" sign may be replaced by the CRD-10 "ROAD WORK" sign.
4. A shadow vehicle with a TMA should be used anytime it can be positioned 30 to 100 feet in advance of the work zone to provide advance warning of the work zone.
5. Additional shadow vehicles with TMA may be positioned off the paved surface, near to those shown in order to protect other work spaces.
6. If this TCP is used for a left lane closure, CRD-51L "LEFT LANE CLOSED" signs shall be used and channelizing devices shall be placed on the shoulder (in the case of a right lane closure) in the closed lane near the end of the taper.
7. Channelizing devices shall be placed on the shoulder (in the case of a right lane closure) in the closed lane near the end of the taper.

**TCP (1-4b)**

For construction control work, specific project requirements for the use of the TCP (1-4b) can be found in the project manual for Item 502, "Traffic Control Plan" and Item 503, "Traffic Control Plan".

**TYPICAL USAGE**

MOBILE	SHORT	INTERMEDIATE	LONG
STATIONARY	STATIONARY	STATIONARY	STATIONARY

**CONVENTIONAL ROAD ONLY**

\* Taper lengths have been rounded off.

L = Length of Taper (ft)    W = Width of Offset (ft)    S = Posted Speed (MPH)

Offset (ft)	Width (ft)	Length (ft)
10'	10'	150'
15'	15'	225'
20'	20'	300'
25'	25'	375'
30'	30'	450'
35'	35'	525'
40'	40'	600'
45'	45'	675'
50'	50'	750'
55'	55'	825'
60'	60'	900'
65'	65'	975'
70'	70'	1050'
75'	75'	1125'

**Texas Department of Transportation**

*Traffic Operations Division*

**TRAFFIC CONTROL PLAN**

**LANE CLOSURES ON MULTILANE CONVENTIONAL ROADS**

**TCP (1-4) - 12**