



**REVIEW BY FORT BEND COUNTY
COMMISSIONERS COURT**

**Fort Bend County
Engineering Department**
301 Jackson Suite 401
Richmond, Texas 77469
281.633.7500
Permits@fortbendcountytx.gov

- ☒ Right of Way Permit
☐ Commercial Driveway Permit

Permit No: 2017-12751

Applicant: PS Light Wave, Inc.

Job Location Site: Clodine Road, Richmond, TX 77407

Bond No. Date of Bond: 12/13/2016 Amount: \$50,000.00

The above applicant came to make use of certain Fort Bend County property subject to, "The Order Regulating the Laying, Construction, Maintenance, and Repair of Buried Cables, Conduits, and Pole Lines, In, Under, Across or Along Roads, Streets, Highways, and Drainage Ditches in Fort Bend County, Texas, Under the Jurisdiction of the Commissioners Court of Fort Bend County, Texas," as passed by the Commissioners Court of Fort Bend County, Texas, of the Minutes of the Commissioners Court of Fort Bend County, Texas, to the extent that such order is not inconsistent with Chapter 181, Vernon's Texas Statutes and Codes Annotated.

Notes:

1. Evidence of review by the Commissioners Court must be kept on the job site and failure to do so constitutes grounds for job shutdown.
2. Written notices are required:
 - a. 48 hours in advance of construction start up, and
 - b. When construction is completed and ready for final inspection, submit notification to Permit Administrator thru MyGovernmentOnline.org portal.
3. This permit expires one (1) year from date of permit if construction has not commenced.

On this 4th day of April, 2017, Upon Motion of Commissioner Mayers, seconded by Commissioner Morales, duly put and carried, it is ORDERED, ADJUDGED AND DECREED that said notice of said above purpose is hereby acknowledged by the Commissioners Court of Fort Bend County, Texas, and that said notice be placed on record according to the regulation order thereof.

Signature

Presented to Commissioners Court and approved.

By: Charles O. Ay
for County Engineer

Date Recorded 4-06-17 Comm. Court No. 12P

By: N/A

Drainage District Engineer/Manager

Clerk of Commissioners Court

By: Ronda Willis
Deputy



**PERMIT APPLICATION REVIEW FORM FOR
CABLE, CONDUIT, AND POLE LINE ACTIVITY
IN FORT BEND COUNTY**

**Fort Bend County
Engineering Department**
301 Jackson Suite 401
Richmond, Texas 77469
281.633.7500
Permits@fortbendcountytexas.gov

- ☒ Right of Way Permit
☐ Commercial Driveway Permit

Permit No: 2017-12751

The following "Notice of Proposed Cable, Conduit, and/or Pole Line activity in Fort Bend County" and accompanying attachments have been reviewed and the notice conforms to appropriate regulations set by Commissioner's Court of Fort Bend County, Texas.

(1) COMPLETE APPLICATION FORM:

- | | |
|-------------------------------------|--|
| <input checked="" type="checkbox"/> | a. Name of road, street, and/or drainage ditch affected. |
| <input checked="" type="checkbox"/> | b. Vicinity map showing course of directions |
| <input checked="" type="checkbox"/> | c. Plans and specifications |

(2) BOND:

- | | | | |
|-------------------------------------|--|---|---------------------|
| <input type="checkbox"/> | County Attorney, approval when applicable. | | |
| <input checked="" type="checkbox"/> | Perpetual bond currently posted. | Bond No: [REDACTED] | Amount: \$50,000.00 |
| <input type="checkbox"/> | Performance bond submitted. | Bond No: _____ | Amount: _____ |
| <input type="checkbox"/> | Cashier's Check | Check No: _____ | Amount: _____ |

(3) DRAINAGE DISTRICT APPROVAL (WHEN APPLICABLE):

Drainage District Approval

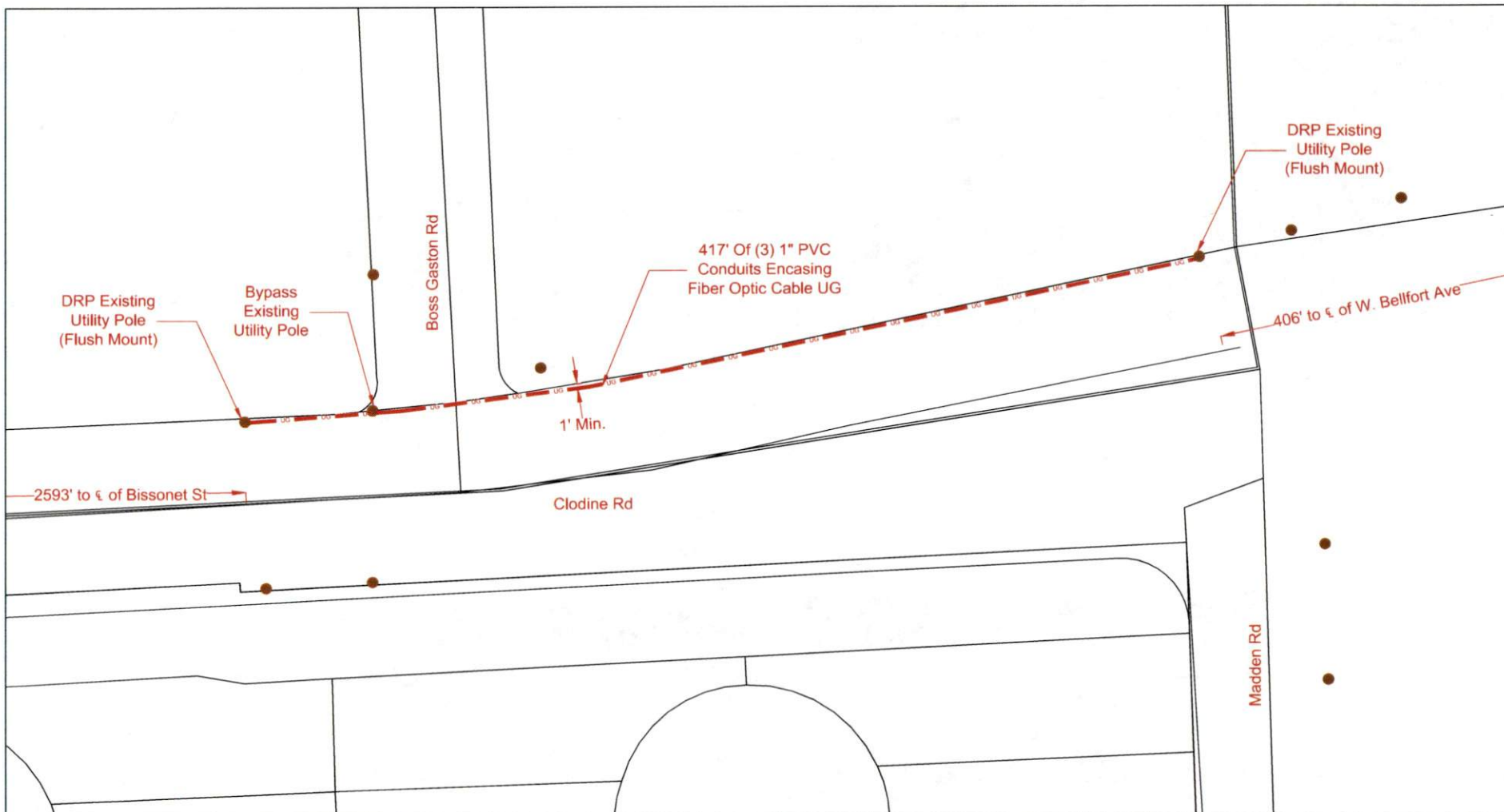
Date

We have reviewed this project and agree it meets minimum requirements.

Charles O. Ay

Permit Administrator

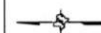
3/28/17
Date



UG	3(1") HDPE W/ F.O. CABLE
UG	3(1.25") HDPE W/ F.O. CABLE
UG	1(2") HDPE W/ F.O. CABLE
UG	1(4") HDPE W/ 3(1.25")HDPE
	FLEX INNERDUCT
AIR	AERIAL FIBER OPTIC CABLE
CAT5	CAT5 CABLE

LEGEND	
	PROPOSED CONDUIT
	EXISTING CONDUIT
	EMT 1.25" EMT
	R/W RIGHT-OF-WAY
	EOP EDGE-OF-PAVEMENT
	FENCE
	RACK LOCATION

	PSLW SET POLE
	EXISTING SET POLE
	EXISTING UTILITY POLE
	PROPOSED PSLW VAULT (24"x36"x24")
	EXISTING VAULT
	PULLBOX
	MDF LOCATION



SCALE: 1"=40'
PAGE: 1
OF: 3



REVISION#1: Rev#1	DATE: Rev#1 Date
REVISION#2: Rev#2	DATE: Rev#2 Date
REVISION#3: Rev#3	DATE: Rev#3 Date
REVISION#4: Rev#4	DATE: Rev#4 Date

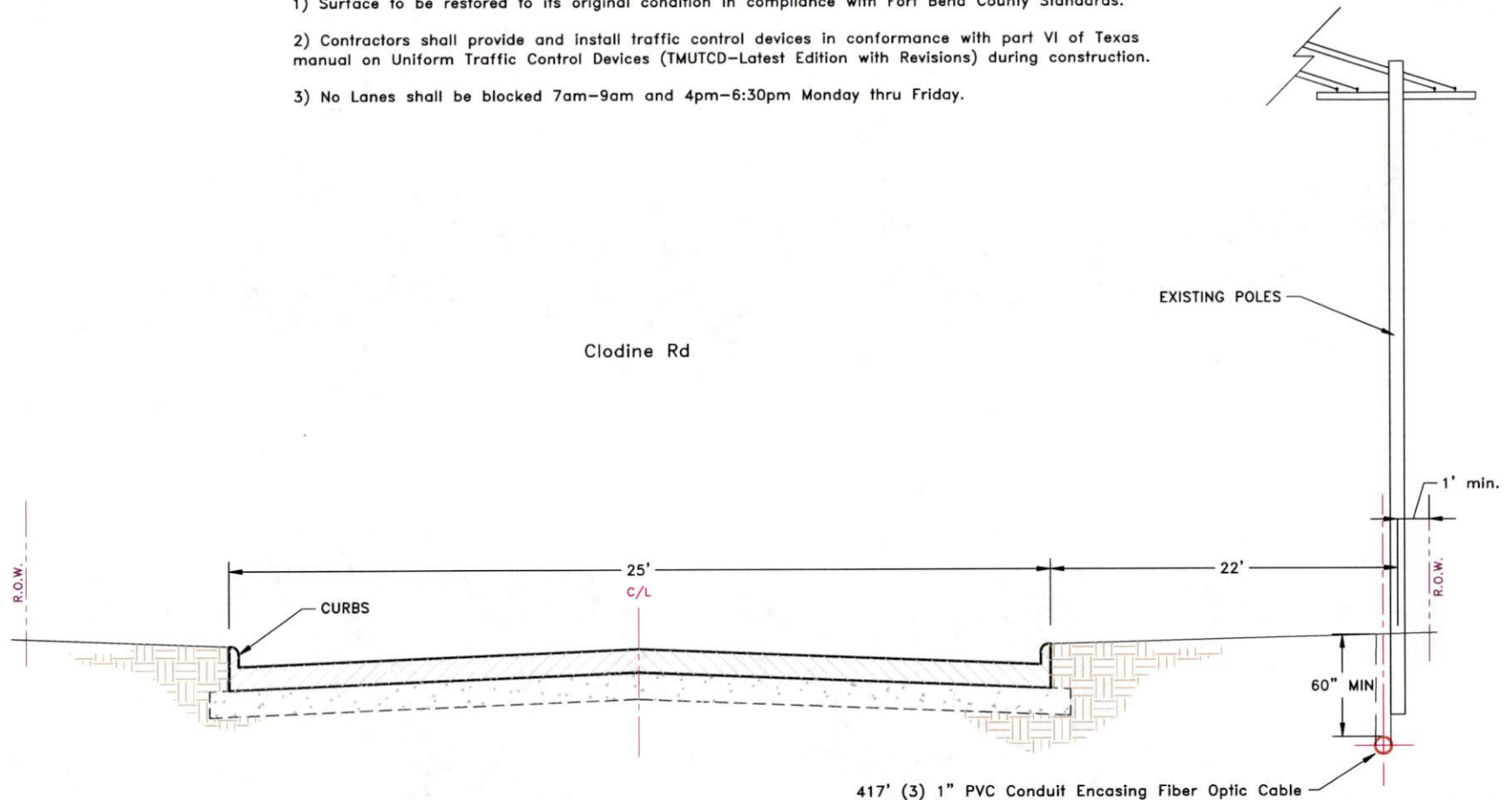
CUSTOMER ID: JOB# 0616-842 PLW			
CUSTOMER: Notice of Proposed Utility Installation			
ADDRESS: Clodine Rd at Boss Gaston Rd			
CITY/ZIP: Richmond, TX 77407	COUNTY: Fort Bend		
TENANTS:	# OF FLOORS:	DWG#:	KEY MAP: 5271
WO# 92989	JOB# 0616-842	DRAWN BY: GC	DATE: 03/15/17
APPROVED BY:		DATE:	



<div>LEGEND</div> <div><div><div>UG</div><div>3(1") HDPE W/ F.O. CABLE</div></div><div><div>UG</div><div>3(1.25") HDPE W/ F.O. CABLE</div></div><div><div>UG</div><div>1(2") HDPE W/ F.O. CABLE</div></div><div><div>UG</div><div>1(4") HDPE W/ 3(1.25")HDPE</div></div><div><div></div><div>FLEX INNERDUCT</div></div><div><div>AIR</div><div>AERIAL FIBER OPTIC CABLE</div></div><div><div>CAT5</div><div>CAT5 CABLE</div></div></div> <div><div><div></div><div>PROPOSED CONDUIT</div></div><div><div></div><div>EXISTING CONDUIT</div></div><div><div>EMT</div><div>1.25" EMT</div></div><div><div>R/W</div><div>RIGHT-OF-WAY</div></div><div><div>EOP</div><div>EDGE-OF-PAVEMENT</div></div><div><div></div><div>FENCE</div></div><div><div></div><div>RACK LOCATION</div></div></div> <div><div><div></div><div>PSLW SET POLE</div></div><div><div></div><div>EXISTING SET POLE</div></div><div><div></div><div>EXISTING UTILITY POLE</div></div><div><div></div><div>PROPOSED PSLW VAULT (24"x36"x24")</div></div><div><div></div><div>EXISTING VAULT</div></div><div><div></div><div>PULLBOX</div></div><div><div></div><div>MDF LOCATION</div></div></div> <div><div><div></div><div>SCALE: 1"=40'</div></div><div><div></div><div>PAGE: 2</div></div><div><div></div><div>OF: 3</div></div></div> <div><div><div><div>PS LIGHTWAVE</div><div>PROPRIETARY INFORMATION - PROPERTY OF PS LIGHTWAVE</div></div><div><div>REVISION#1: Rev#1</div><div>REVISION#2: Rev#2</div><div>REVISION#3: Rev#3</div><div>REVISION#4: Rev#4</div></div><div><div>DATE: Rev#1 Date</div><div>DATE: Rev#2 Date</div><div>DATE: Rev#3 Date</div><div>DATE: Rev#4 Date</div></div></div><div><div><div>CUSTOMER ID: JOB# 0616-842 PLW</div><div>CUSTOMER: Notice of Proposed Utility Installation</div><div>ADDRESS: Clodine Rd at Boss Gaston Rd</div><div>CITY/ZIP: Richmond, TX 77407</div><div>COUNTY: Fort Bend</div></div><div><div>TENANTS:</div><div>WO#: 92989</div><div>APPROVED BY:</div></div><div><div># OF FLOORS:</div><div>JOB#: 0616-842</div><div>DATE:</div></div><div><div>DWG#:</div><div>DRAWN BY: GC</div><div>KEY MAP: 5271</div><div>DATE: 03/15/17</div></div></div></div>									
---	--	--	--	--	--	--	--	--	--

General Notes:

- 1) Surface to be restored to its original condition in compliance with Fort Bend County Standards.
- 2) Contractors shall provide and install traffic control devices in conformance with part VI of Texas manual on Uniform Traffic Control Devices (TMUTCD—Latest Edition with Revisions) during construction.
- 3) No Lanes shall be blocked 7am–9am and 4pm–6:30pm Monday thru Friday.

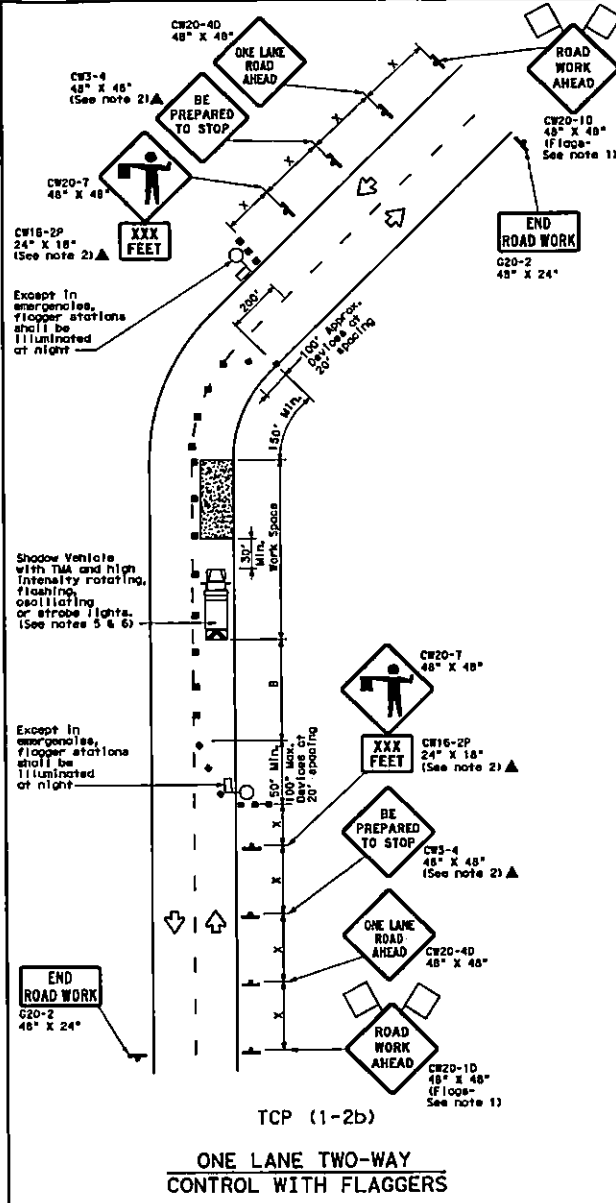
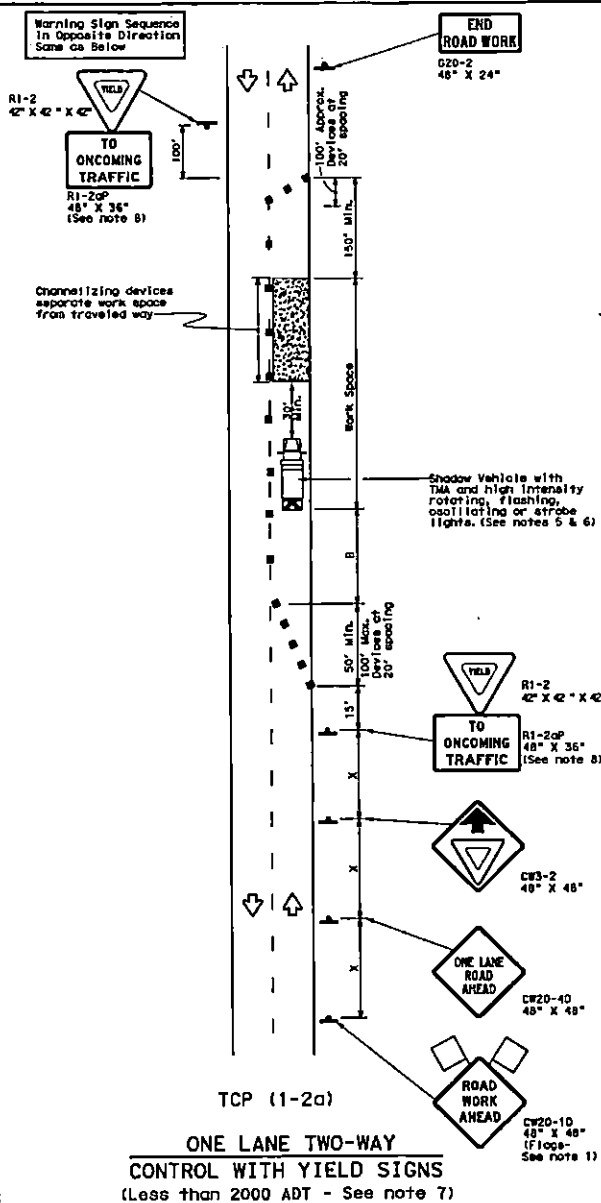


417' (3) 1" PVC Conduit Encasing Fiber Optic Cable

<p>UG 3(1") HDPE W/ F.O. CABLE</p> <p>UG 3(1.25") HDPE W/ F.O. CABLE</p> <p>UG 1(2") HDPE W/ F.O. CABLE</p> <p>UG 1(4") HDPE W/ 3(1.25")HDPE</p> <p>FLEX INNERDUCT</p> <p>AIR AERIAL FIBER OPTIC CABLE</p> <p>CAT5 CAT5 CABLE</p>	<p>LEGEND</p> <p>PROPOSED CONDUIT</p> <p>EXISTING CONDUIT</p> <p>1.25" EMT</p> <p>RIGHT-OF-WAY</p> <p>EDGE-OF-PAVEMENT</p> <p>FENCE</p> <p>RACK LOCATION</p>	<p>PSLW SET POLE</p> <p>EXISTING SET POLE</p> <p>EXISTING UTILITY POLE</p> <p>PROPOSED PSLW VAULT (24"x36"x24")</p> <p>EXISTING VAULT</p> <p>PULLBOX</p> <p>MDF LOCATION</p>	<p>SCALE: N.T.S.</p> <p>PAGE: 3</p> <p>OF: 3</p>	<p>PS LIGHTWAVE</p> <p>PROPRIETARY INFORMATION - PROPERTY OF PS LIGHTWAVE</p> <p>REVISION#1: Rev#1 DATE: Rev#1 Date</p> <p>REVISION#2: Rev#2 DATE: Rev#2 Date</p> <p>REVISION#3: Rev#3 DATE: Rev#3 Date</p> <p>REVISION#4: Rev#4 DATE: Rev#4 Date</p>	<p>Job# 0616-842 PLW</p> <p>Description: Notice of Proposed Utility Installation</p> <p>ADDRESS: Clodine Rd at Boss Gaston Rd</p> <p>CITY/ZIP: Richmond, TX 77407</p> <p>COUNTY: Fort Bend</p> <p>TENANTS: # OF FLOORS: DWG# KEY MAP: 5271</p> <p>WO# 92989 JOB# 0616-842 DRAWN BY: GG DATE: 03/15/17</p> <p>APPROVED BY: DATE:</p>
---	---	--	--	--	---

DISCLAIMER: The use of this standard is governed by the "Texas Engineering Practice Act". No warranty of any kind or form is made by TxDOT for any purpose whatsoever. TxDOT assumes no responsibility for the consequences of any use of this standard to other than its intended use or for incorrect results or design resulting from its use.

DATE
FILE



LEGEND

Type 3 Barricade	Channelizing Devices
Heavy Work Vehicle	Truck Mounted Attenuator (TMA)
Trailer Mounted Flashing Arrow Board	Portable Changeable Message Sign (PCMS)
Sign	Traffic Flow
Flag	Flagger

Posted Speed M	Formula	Minimum Desirable Taper Lengths ft			Suggested Maximum Spacing of Channelizing Devices		Minimum Sign Spacing ft	Suggested Longitudinal Buffer Space ft	Stopping Sight Distance ft
		10' Offset	11' Offset	12' Offset	On a Taper	On a Tangent			
30	L = WS ² / 60	150'	165'	180'	30'	60'	120'	90'	200'
35		205'	225'	245'	35'	70'	160'	120'	250'
40		285'	295'	320'	40'	80'	240'	155'	305'
45		450'	495'	540'	45'	90'	320'	195'	360'
50	L = WS ²	500'	550'	600'	50'	100'	400'	240'	425'
55		550'	605'	660'	55'	110'	500'	295'	495'
60		600'	660'	720'	60'	120'	600'	350'	570'
65		650'	715'	780'	65'	130'	700'	410'	645'
70		700'	770'	840'	70'	140'	800'	475'	730'
75		750'	825'	900'	75'	150'	900'	540'	820'

* Conventional Roads Only
** Taper lengths have been rounded off.
L = Length of Taper (ft) W = Width of Offset (ft) S = Posted Speed (MPH)

TYPICAL USAGE

MOBILE	SHORT DURATION	SHORT TERM STATIONARY	INTERMEDIATE TERM STATIONARY	LONG TERM STATIONARY

GENERAL NOTES

- Flags attached to signs where shown are REQUIRED.
 - All traffic control devices illustrated are REQUIRED, except those denoted with the triangle symbol may be omitted when stated elsewhere in the plans, or for routine maintenance work, when approved by the Engineer.
 - The W3-4 "BE PREPARED TO STOP" sign may be installed after the W20-40 "ONE LANE ROAD AHEAD" sign, but proper sign spacing shall be maintained.
 - Sign spacing may be increased or an additional W20-10 "ROAD WORK AHEAD" sign may be used if advance warning ahead of the flagger or R1-2 "YIELD" sign is less than 1500 feet.
 - A Shadow Vehicle with a TMA should be used anytime it can be positioned 30 to 100 feet in advance of the area of crew exposure without adversely affecting the performance or quality of the work. If workers are no longer present but road or work conditions require the traffic control to remain in place, Type 3 Barricades or other channelizing devices may be substituted for the Shadow Vehicle and TMA.
 - Additional Shadow Vehicles with TMA may be positioned off the paved surface, next to those shown in order to protect wider work spaces.
- TCP (1-2a)**
- R1-2 "YIELD" sign traffic control may be used on projects with approaches that have adequate sight distance. For projects in urban areas, work spaces should be no longer than one half city block. In rural areas on roadways with less than 2000 ADT, work spaces should be no longer than 400 feet.
 - R1-2 "YIELD" sign with R1-2aP "TO ONCOMING TRAFFIC" plaque shall be placed on a support at a 7 foot minimum mounting height.
- TCP (1-2b)**
- Flaggers should use two-way radios or other methods of communication to control traffic.
 - Length of work space should be based on the ability of flaggers to communicate.
 - If the work space is located near a horizontal or vertical curve, the buffer distance should be increased in order to maintain adequate stopping sight distance to the flagger and a queue of stopped vehicles (see table above).
 - Channelizing devices on the center-line may be omitted when a pilot car is leading traffic and approved by the Engineer.
 - Flaggers should use 24" STOP/SLOW paddles to control traffic. Flags should be limited to emergency situations.

For construction or maintenance contract work, specific project requirements for shadow vehicles can be found in the project GENERAL NOTES for Item 502, Barricades, Signs and Traffic Handling.

Texas Department of Transportation
Traffic Operations Division

TRAFFIC CONTROL PLAN
ONE-LANE TWO-WAY
TRAFFIC CONTROL

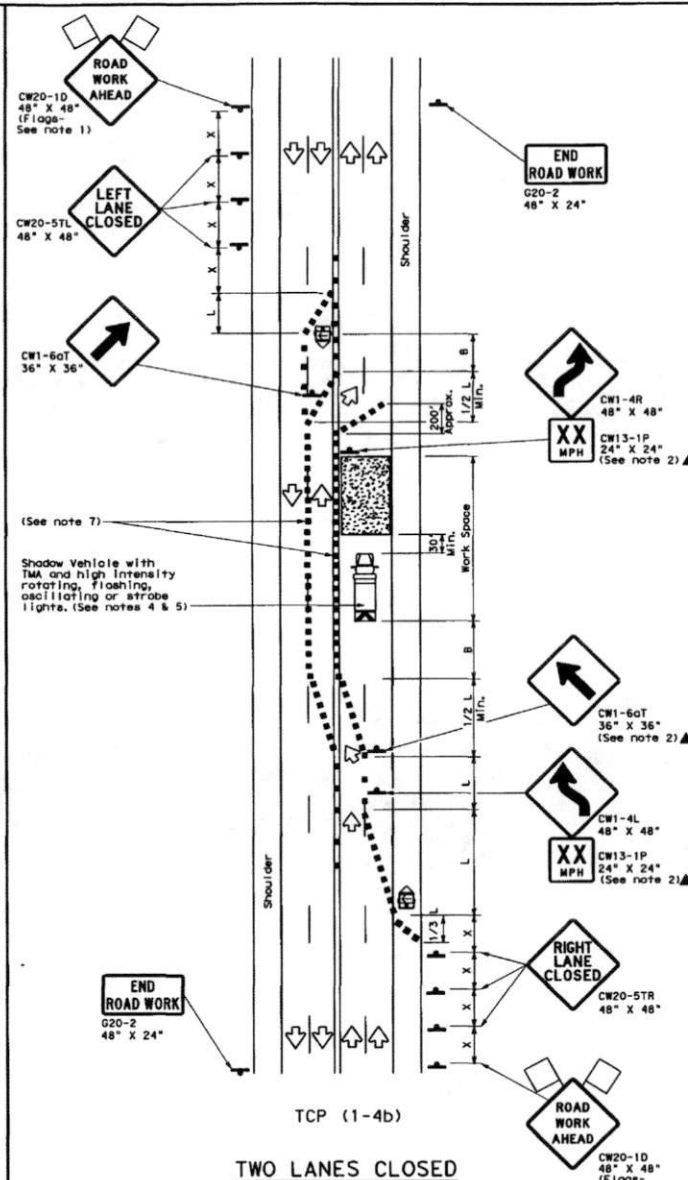
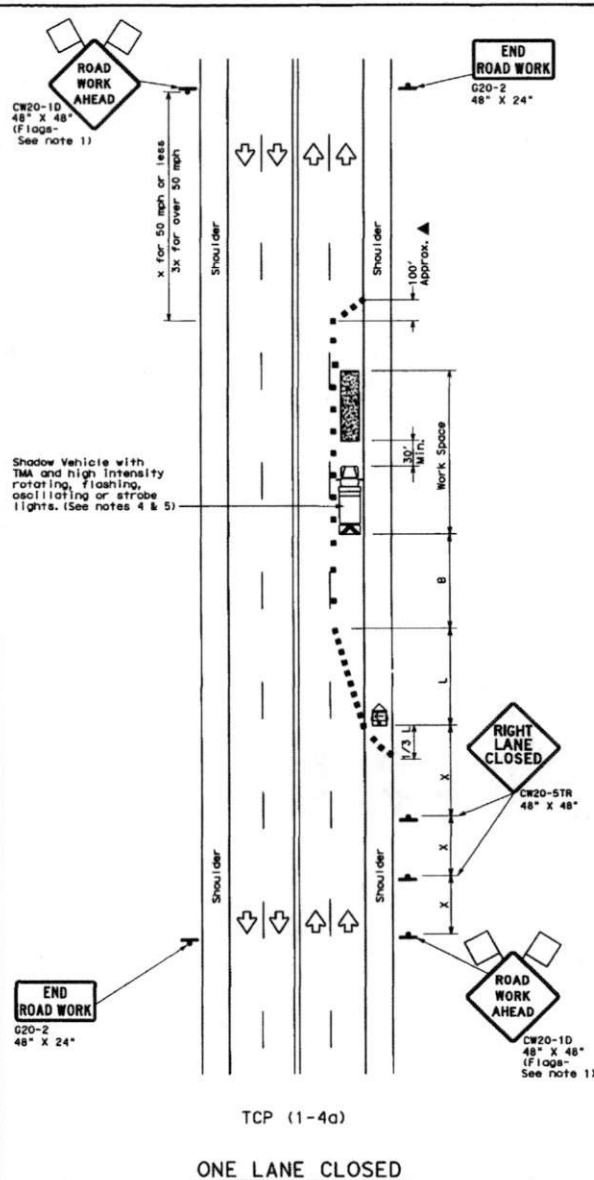
TCP (1-2)-12

REVISIONS	DATE	BY	CHKD	APP'D
1-12				
2-94				
1-97				
4-98				

152

DISCLAIMER: The use of this standard is governed by the "Texas Engineering Practice Act". No warranty of any kind is made by TxDOT for any purpose whatsoever. TxDOT assumes no responsibility for the consequences of any use of this standard in other than the intended manner or for incorrect results or damages resulting from its use.

DATE: FILE:



LEGEND			
	Type 3 Barricade		Channelizing Devices
	Heavy Work Vehicle		Truck Mounted Attenuator (TMA)
	Trailer Mounted Flashing Arrow Board		Portable Changeable Message Sign (PCMS)
	Sign		Traffic Flow
	Flag		Flagger

Posted Speed MPH	Formula	Minimum Desirable Taper Lengths ft		Suggested Maximum Spacing of Channelizing Devices ft		Minimum Sign Spacing ft		Suggested Longitudinal Buffer Space ft	
		10' Offset	12' Offset	On a Taper	On a Tangent	Distance	Distance	Distance	Distance
30	$L = \frac{WS^2}{60}$	150'	165'	180'	30'	60'	120'	90'	90'
35		205'	225'	245'	35'	70'	160'	120'	120'
40		265'	295'	320'	40'	80'	240'	155'	155'
45		450'	495'	540'	45'	90'	320'	195'	195'
50	$L = \frac{WS^2}{60}$	500'	550'	600'	50'	100'	400'	240'	240'
55		550'	605'	660'	55'	110'	500'	295'	295'
60		600'	660'	720'	60'	120'	600'	350'	350'
65		650'	715'	780'	65'	130'	700'	410'	410'
70		700'	770'	840'	70'	140'	800'	475'	475'
75		750'	825'	900'	75'	150'	900'	540'	540'

* Conventional Roads Only
* Taper lengths have been rounded off.
L=Length of Taper (FT) W=Width of Offset (FT) S=Posted Speed (MPH)

TYPICAL USAGE				
MOBILE	SHORT DURATION	SHORT TERM STATIONARY	INTERMEDIATE TERM STATIONARY	LONG TERM STATIONARY
	✓		✓	

GENERAL NOTES

- Flags attached to signs where shown are REQUIRED.
 - All traffic control devices illustrated are REQUIRED, except those denoted with the triangle symbol may be omitted when stated elsewhere in the plans, or for routine maintenance work, when approved by the Engineer.
 - The CW20-1D "ROAD WORK AHEAD" sign may be repeated if the visibility of the work zone is less than 1500 feet.
 - A Shadow Vehicle with a TMA should be used anytime it can be positioned 30 to 100 feet in advance of the area of crew exposure without adversely affecting the performance or quality of the work. If workers are no longer present but road or work conditions require the traffic control to remain in place, Type 3 Barricades or other channelizing devices may be substituted for the Shadow Vehicle and TMA.
 - Additional Shadow Vehicles with TMAs may be positioned off the paved surface, next to those shown in order to protect wider work spaces.
- TCP (1-4a)**
- If this TCP is used for a left lane closure, CW20-STL "LEFT LANE CLOSED" signs shall be used and channelizing devices shall be placed on the centerline where needed to protect the work space from opposing traffic with the arrow panel placed in the closed lane near the end of the merging taper.
- TCP (1-4b)**
- Where traffic is directed over a yellow centerline, channelizing devices which separate two-way traffic should be spaced on tapers at 20' or 15' if posted speeds are 35 mph or slower, and for tangent sections, at 1/25 where S is the speed in mph. This tighter device spacing is intended for the areas of conflicting markings, not the entire work zone.

For construction or maintenance contract work, specific project requirements for shadow vehicles can be found in the project GENERAL NOTES for Item 502 Barricades, Signs and Traffic Handling.

Texas Department of Transportation
Traffic Operations Division

TRAFFIC CONTROL PLAN LANE CLOSURES ON MULTILANE CONVENTIONAL ROADS

TCP (1-4)-12

© TxDOT December 1985	REVISED	REVISED	REVISED	REVISED	REVISED
2-94	1-12				
3-96					
1-97					
4-98					
154					