



**REVIEW BY FORT BEND COUNTY
COMMISSIONERS COURT**

**Fort Bend County
Engineering Department**
301 Jackson Suite 401
Richmond, Texas 77469
281.633.7500
Permits@fortbendcountytexas.gov

- ☒ Right of Way Permit
☐ Commercial Driveway Permit

Permit No: 2017-12750

Applicant: PS Light Wave, Inc.

Job Location Site: Clodine Road, Richmond, TX 77407

Bond No. **Date of Bond:** 12/13/2016 **Amount:** \$50,000.00

The above applicant came to make use of certain Fort Bend County property subject to, "The Order Regulating the Laying, Construction, Maintenance, and Repair of Buried Cables, Conduits, and Pole Lines, In, Under, Across or Along Roads, Streets, Highways, and Drainage Ditches in Fort Bend County, Texas, Under the Jurisdiction of the Commissioners Court of Fort Bend County, Texas," as passed by the Commissioners Court of Fort Bend County, Texas, of the Minutes of the Commissioners Court of Fort Bend County, Texas, to the extent that such order is not inconsistent with Chapter 181, Vernon's Texas Statutes and Codes Annotated.

Notes:

1. Evidence of review by the Commissioners Court must be kept on the job site and failure to do so constitutes grounds for job shutdown.
2. Written notices are required:
 - a. 48 hours in advance of construction start up, and
 - b. When construction is completed and ready for final inspection, submit notification to Permit Administrator thru MyGovernmentOnline.org portal.
3. This permit expires one (1) year from date of permit if construction has not commenced.

On this 4th day of April, 2017, Upon Motion of Commissioner Meyers, seconded by Commissioner Morales, duly put and carried, it is ORDERED, ADJUDGED AND DECREED that said notice of said above purpose is hereby acknowledged by the Commissioners Court of Fort Bend County, Texas, and that said notice be placed on record according to the regulation order thereof.

Signature

By: Charles O. Ay
for County Engineer

N/A

By: _____
Drainage District Engineer/Manager

Presented to Commissioners Court and approved.

Date Recorded 4-06-17 Comm. Court No. 12N

Clerk of Commissioners Court

By: Brenda Wilkins
Deputy



**PERMIT APPLICATION REVIEW FORM FOR
CABLE, CONDUIT, AND POLE LINE ACTIVITY
IN FORT BEND COUNTY**

**Fort Bend County
Engineering Department**
301 Jackson Suite 401
Richmond, Texas 77469
281.633.7500
Permits@fortbendcountytexas.gov

☒ Right of Way Permit
☐ Commercial Driveway Permit
Permit No: 2017-12750

The following "Notice of Proposed Cable, Conduit, and/or Pole Line activity in Fort Bend County" and accompanying attachments have been reviewed and the notice conforms to appropriate regulations set by Commissioner's Court of Fort Bend County, Texas.

(1) COMPLETE APPLICATION FORM:

- | | |
|-------------------------------------|--|
| <input checked="" type="checkbox"/> | a. Name of road, street, and/or drainage ditch affected. |
| <input checked="" type="checkbox"/> | b. Vicinity map showing course of directions |
| <input checked="" type="checkbox"/> | c. Plans and specifications |

(2) BOND:

- | | | | |
|-------------------------------------|--|---|---------------------|
| <input type="checkbox"/> | County Attorney, approval when applicable. | | |
| <input checked="" type="checkbox"/> | Perpetual bond currently posted. | Bond No: XXXXXXXXXX | Amount: \$50,000.00 |
| <input type="checkbox"/> | Performance bond submitted. | Bond No: _____ | Amount: _____ |
| <input type="checkbox"/> | Cashier's Check | Check No: _____ | Amount: _____ |

(3) DRAINAGE DISTRICT APPROVAL (WHEN APPLICABLE):

Drainage District Approval

Date

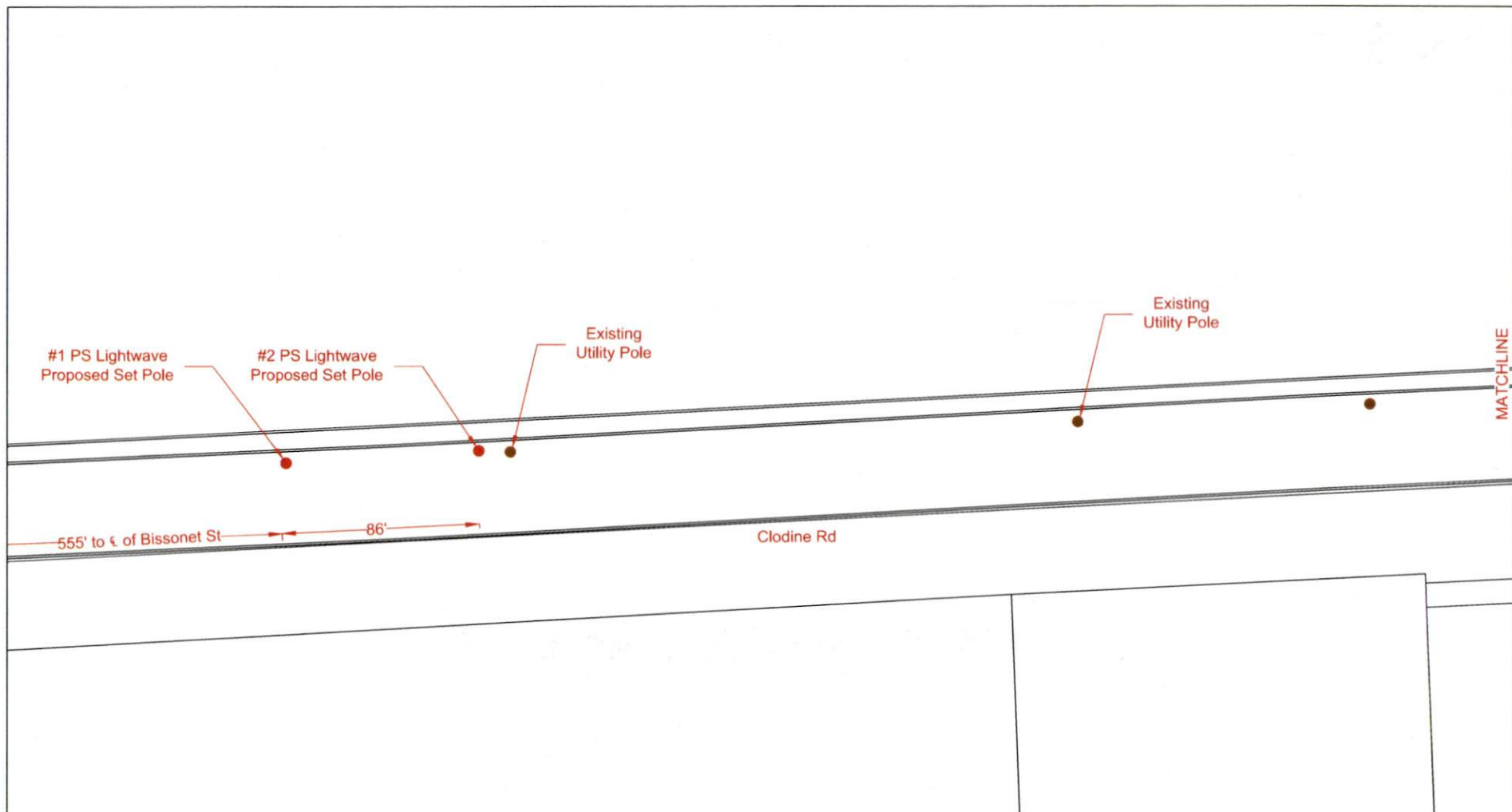
We have reviewed this project and agree it meets minimum requirements.

Charles O. Ay

Permit Administrator

3/28/17

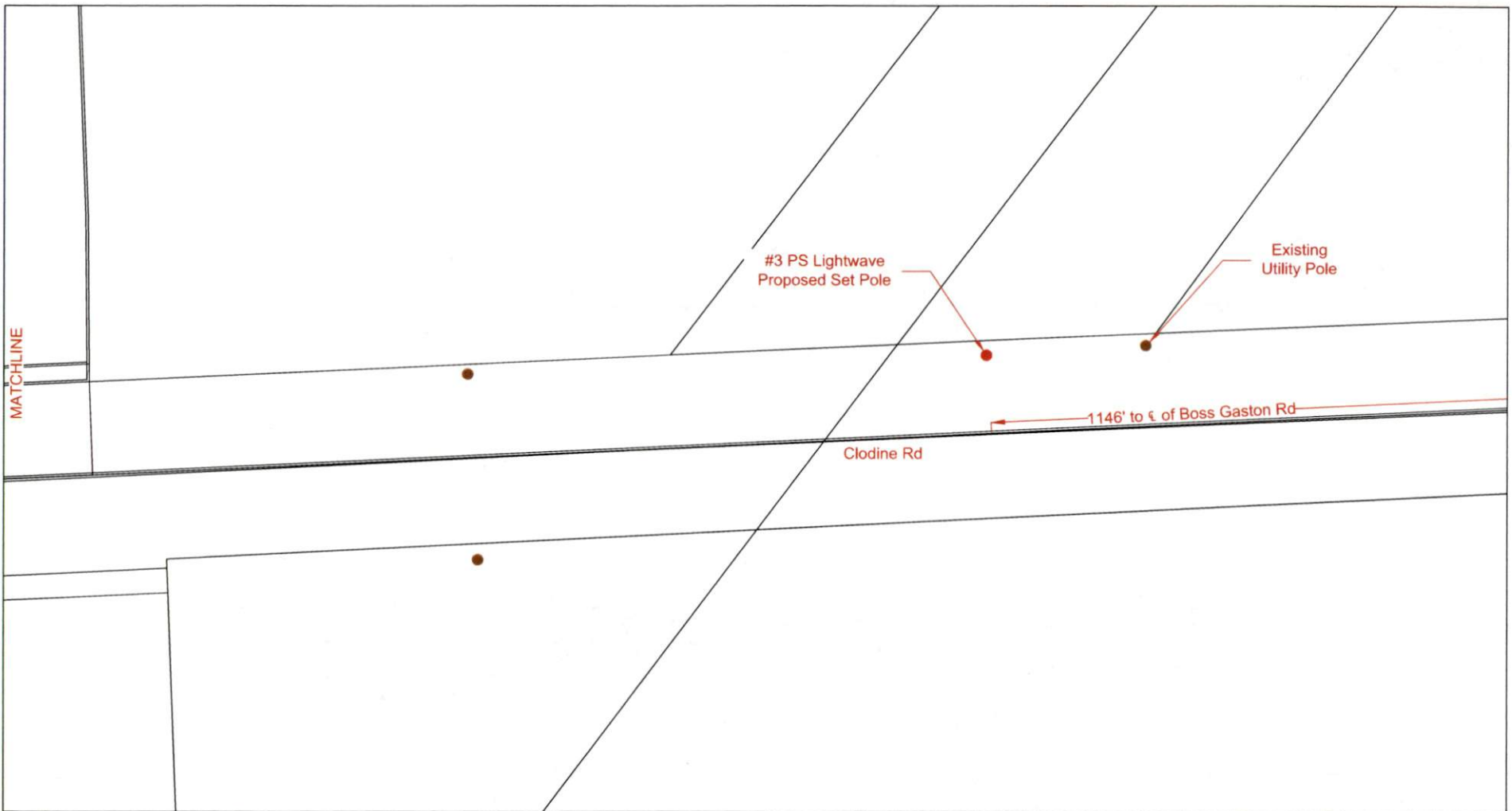
Date



<div>LEGEND</div> <div><div><div><div>UG</div><div>3(1") HDPE W/ F.O. CABLE</div></div><div><div>UG</div><div>3(1.25") HDPE W/ F.O. CABLE</div></div><div><div>UG</div><div>1(2") HDPE W/ F.O. CABLE</div></div><div><div>UG</div><div>1(4") HDPE W/ 3(1.25")HDPE</div></div><div><div></div><div>FLEX INNERDUCT</div></div><div><div>AIR</div><div>AERIAL FIBER OPTIC CABLE</div></div><div><div>CAT5</div><div>CAT5 CABLE</div></div></div><div><div><div></div><div>PROPOSED CONDUIT</div></div><div><div></div><div>EXISTING CONDUIT</div></div><div><div>EMT</div><div>1.25" EMT</div></div><div><div>R/W</div><div>RIGHT-OF-WAY</div></div><div><div>EOP</div><div>EDGE-OF-PAVEMENT</div></div><div><div></div><div>FENCE</div></div><div><div></div><div>RACK LOCATION</div></div></div><div><div><div></div><div>PSLW SET POLE</div></div><div><div></div><div>EXISTING SET POLE</div></div><div><div></div><div>EXISTING UTILITY POLE</div></div><div><div></div><div>PROPOSED PSLW VAULT (24"x36"x24")</div></div><div><div></div><div>EXISTING VAULT</div></div><div><div></div><div>PULLBOX</div></div><div><div></div><div>MDF LOCATION</div></div></div></div>			<div><div><div></div><div>PSLW LIGHTWAVE</div><div>PROPRIETARY INFORMATION - PROPERTY OF PSLW LIGHTWAVE</div></div><div><div>SCALE: 1"=40'</div><div>PAGE: 1</div><div>OF: 5</div></div></div>	<div><div>CUSTOMER ID: JOB# 0616-842 PLW</div><div>CUSTOMER: Notice of Proposed Utility Installation</div><div>ADDRESS: Clodine Rd near Bissonnet St</div><div>CITY/ZIP: Richmond, TX 77407</div><div>COUNTY: Fort Bend</div><div><div>TENANTS:</div><div># OF FLOORS:</div><div>DWG#:</div><div>KEY MAP: 5271</div></div><div><div>WO#: 92988</div><div>JOB#: 0616-842</div><div>DRAWN BY: CG</div><div>DATE: 03/15/17</div></div><div><div>APPROVED BY:</div><div>DATE:</div></div></div>
--	--	--	--	---



LEGEND <div> <div>UG 3(1") HDPE W/ F.O. CABLE</div> <div>UG 3(1.25") HDPE W/ F.O. CABLE</div> <div>UG 1(2") HDPE W/ F.O. CABLE</div> <div>UG 1(4") HDPE W/ 3(1.25")HDPE</div> <div>FLEX INNERDUCT</div> <div>AIR AERIAL FIBER OPTIC CABLE</div> <div>CATS CATS CABLE</div> </div> <div> <div>PROPOSED CONDUIT</div> <div>EXISTING CONDUIT</div> <div>EMT 1.25" EMT</div> <div>RIGHT-OF-WAY</div> <div>EDGE-OF-PAVEMENT</div> <div>FENCE</div> <div>RACK LOCATION</div> </div> <div> <div>PSLW SET POLE</div> <div>EXISTING SET POLE</div> <div>EXISTING UTILITY POLE</div> <div>PROPOSED PSLW VAULT (24"x36"x24")</div> <div>EXISTING VAULT</div> <div>PULLBOX</div> <div>MDF LOCATION</div> </div>		<div> PS LIGHTWAVE <small>PROPRIETARY INFORMATION - PROPERTY OF PS LIGHTWAVE</small> </div>		<div> <div>CUSTOMER ID: JOB# 0616-842 PLW</div> <div>CUSTOMER: Notice of Proposed Utility Installation</div> <div>ADDRESS: Clodine Rd near Bissonnet St</div> <div>CITY/ZIP: Richmond, TX 77407</div> <div>COUNTY: Fort Bend</div> </div>			
<div> <div>SCALE: 1"=40'</div> <div>PAGE: 2</div> <div>OF: 5</div> </div>		<div> <div>REVISION#1: Rev#1</div> <div>REVISION#2: Rev#2</div> <div>REVISION#3: Rev#3</div> <div>REVISION#4: Rev#4</div> </div>		<div> <div>DATE: Rev#1 Date</div> <div>DATE: Rev#2 Date</div> <div>DATE: Rev#3 Date</div> <div>DATE: Rev#4 Date</div> </div>			
				<div> <div>TENANTS:</div> <div># OF FLOORS:</div> <div>DWG#:</div> <div>KEY MAP: S271</div> </div>			
				<div> <div>WO#: 92988</div> <div>JOB#: 0616-842</div> <div>DRAWN BY: GC</div> <div>DATE: 03/15/17</div> </div>			
				<div> <div>APPROVED BY:</div> <div>DATE:</div> </div>			



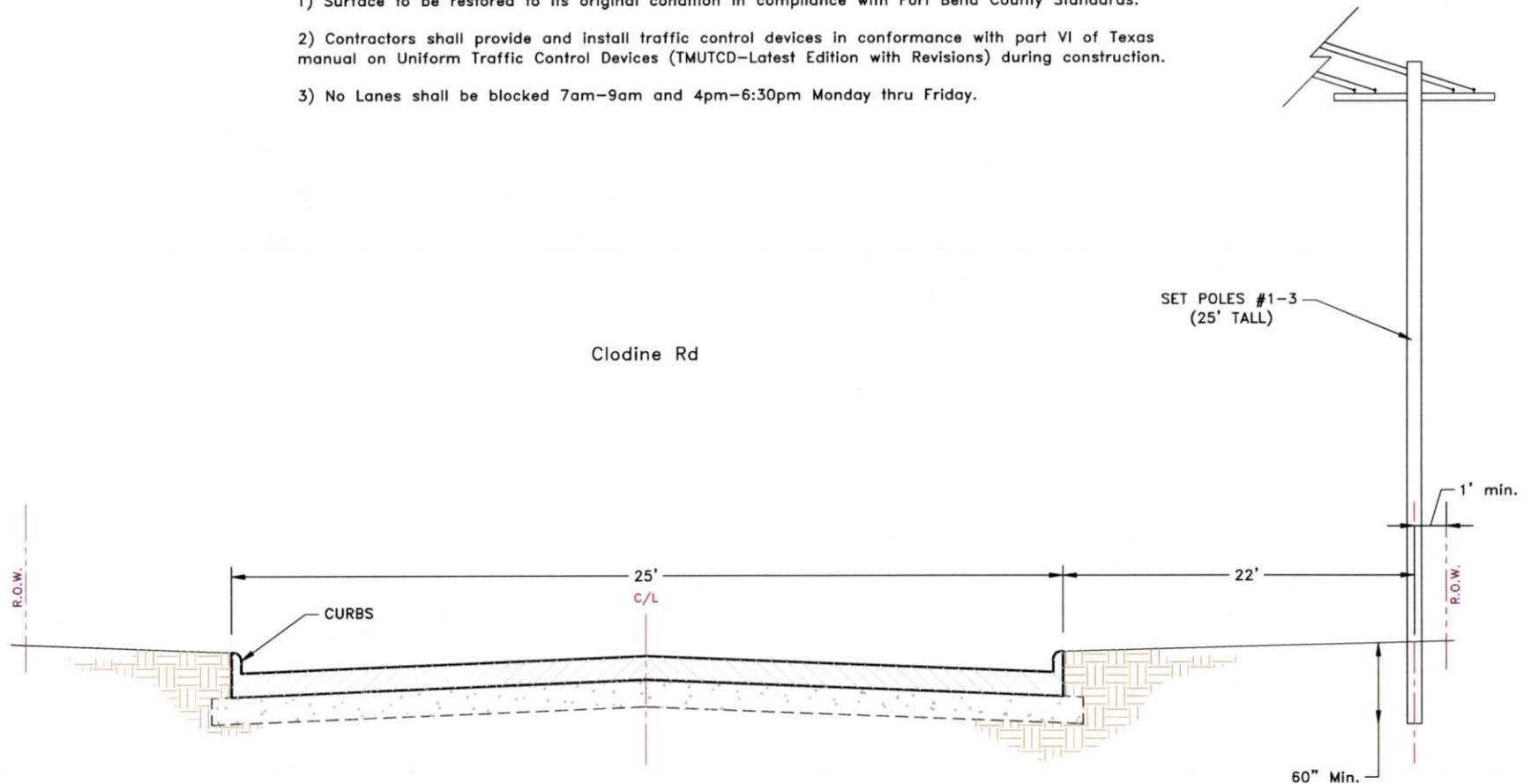
<p>UG 3(1") HDPE W/ F.O. CABLE</p> <p>UG 3(1.25") HDPE W/ F.O. CABLE</p> <p>UG 1(2") HDPE W/ F.O. CABLE</p> <p>UG 1(4") HDPE W/ 3(1.25")HDPE</p> <p>FLEX INNERDUCT</p> <p>AIR AERIAL FIBER OPTIC CABLE</p> <p>CATS CATS CABLE</p>	<p>LEGEND</p> <p>PROPOSED CONDUIT</p> <p>EXISTING CONDUIT</p> <p>1.25" EMT</p> <p>R/W RIGHT-OF-WAY</p> <p>EDGE-OF-PAVEMENT</p> <p>FENCE</p> <p>RACK LOCATION</p> <p>PSLW SET POLE</p> <p>EXISTING SET POLE</p> <p>EXISTING UTILITY POLE</p> <p>PROPOSED PSLW VAULT (24"x36"x24")</p> <p>EXISTING VAULT</p> <p>PULLBOX</p> <p>MDF LOCATION</p>	<p>LIGHTWAVE</p> <p>PROPRIETARY INFORMATION - PROPERTY OF PS LIGHTWAVE</p> <p>SCALE: 1"=40'</p> <p>PAGE: 3</p> <p>OF: 5</p> <p>REVISION#1: Rev#1</p> <p>REVISION#2: Rev#2</p> <p>REVISION#3: Rev#3</p> <p>REVISION#4: Rev#4</p> <p>DATE: Rev#1 Date</p> <p>DATE: Rev#2 Date</p> <p>DATE: Rev#3 Date</p> <p>DATE: Rev#4 Date</p>	<p>CUSTOMER ID: JOB# 0616-842 PLW</p> <p>CUSTOMER: Notice of Proposed Utility Installation</p> <p>ADDRESS: Clodine Rd near Bissonnet St</p> <p>CITY/ZIP: Richmond, TX 77407</p> <p>COUNTY: Fort Bend</p> <p>TENANTS: # OF FLOORS: DWG#: KEY MAP: 5271</p> <p>WO#: 92988 JOB#: 0616-842 DRAWN BY: GC DATE: 03/15/17</p> <p>APPROVED BY: DATE:</p>
---	--	--	--



<div><div><div><div>UG</div><div>3(1") HDPE W/ F.O. CABLE</div></div><div><div>UG</div><div>3(1.25") HDPE W/ F.O. CABLE</div></div><div><div>UG</div><div>1(2") HDPE W/ F.O. CABLE</div></div><div><div>UG</div><div>1(4") HDPE W/ 3(1.25")HDPE</div></div><div><div>---</div><div>FLEX INNERDUCT</div></div><div><div>AIR</div><div>AERIAL FIBER OPTIC CABLE</div></div><div><div>CAT5</div><div>CAT5 CABLE</div></div></div><div><div><div>---</div><div>PROPOSED CONDUIT</div></div><div><div>- - -</div><div>EXISTING CONDUIT</div></div><div><div>EMT</div><div>1.25" EMT</div></div><div><div>R/W</div><div>RIGHT-OF-WAY</div></div><div><div>EGP</div><div>EDGE-OF-PAVEMENT</div></div><div><div>— — —</div><div>FENCE</div></div><div><div></div><div>RACK LOCATION</div></div></div><div><div><div>●</div><div>PSLW SET POLE</div></div><div><div>●</div><div>EXISTING SET POLE</div></div><div><div>●</div><div>EXISTING UTILITY POLE</div></div><div><div></div><div>PROPOSED PSLW VAULT (24"x36"x24")</div></div><div><div></div><div>EXISTING VAULT</div></div><div><div></div><div>PULLBOX</div></div><div><div>★</div><div>MDF LOCATION</div></div></div></div>										<div><div></div><div></div><div>PROPRIETARY INFORMATION - PROPERTY OF PSLIGHTWAVE</div></div>										<div><div>CUSTOMER ID: JOB# 0616-842 PLW</div><div>CUSTOMER: Notice of Proposed Utility Installation</div><div>ADDRESS: Clodine Rd near Bissonnet St</div><div>CITY/ZIP: Richmond, TX 77407</div><div>COUNTY: Fort Bend</div><div>TENANTS: # OF FLOORS: DWG#:</div><div>KEY MAP: 5271</div><div>WO#: 92988</div><div>JOB#: 0616-842</div><div>DRAWN BY: CG</div><div>DATE: 03/15/17</div><div>APPROVED BY:</div><div>DATE:</div></div>									
<div>SCALE: 1"=40'</div> <div>PAGE: 4</div> <div>OF: 5</div>										<div><div>REVISION#1: Rev#1</div><div>DATE: Rev#1 Date</div><div>REVISION#2: Rev#2</div><div>DATE: Rev#2 Date</div><div>REVISION#3: Rev#3</div><div>DATE: Rev#3 Date</div><div>REVISION#4: Rev#4</div><div>DATE: Rev#4 Date</div></div>																			

General Notes:

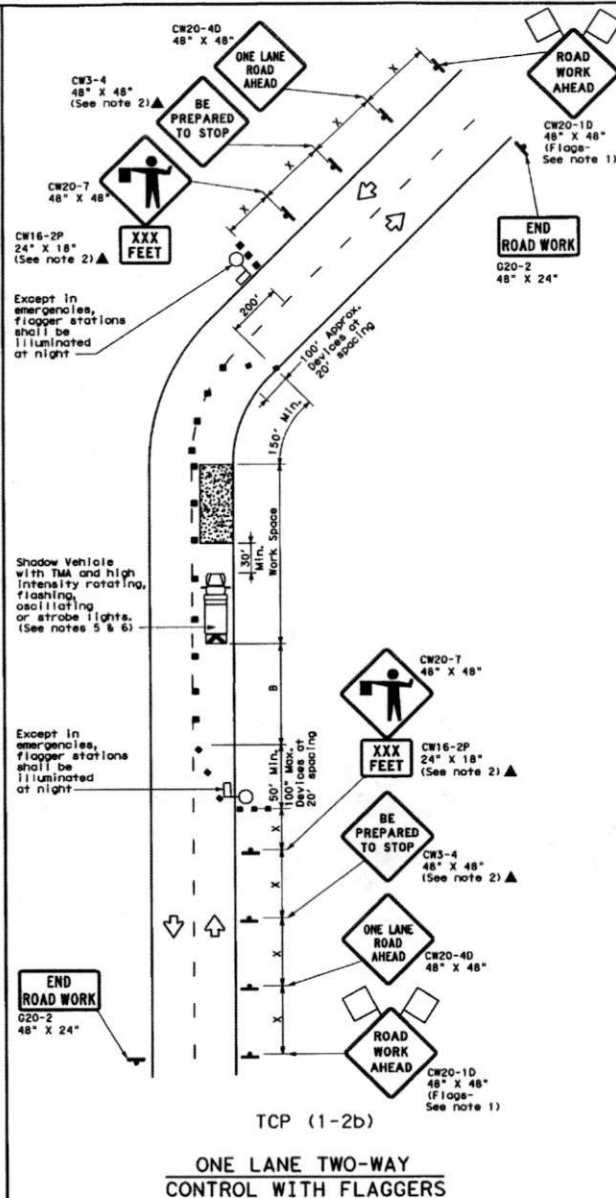
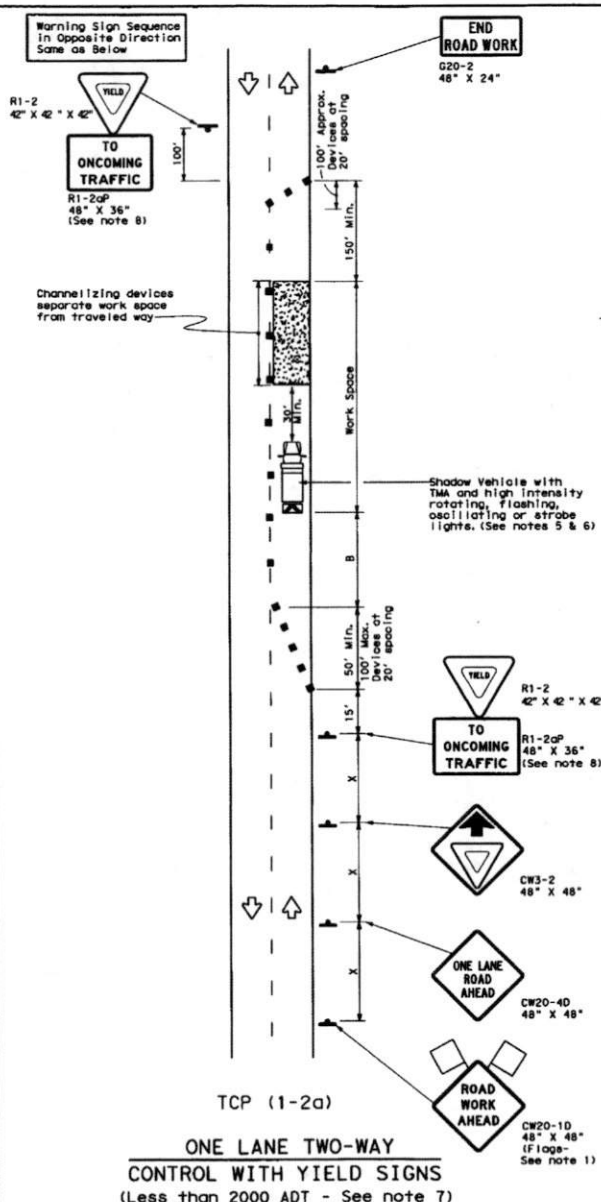
- 1) Surface to be restored to its original condition in compliance with Fort Bend County Standards.
- 2) Contractors shall provide and install traffic control devices in conformance with part VI of Texas manual on Uniform Traffic Control Devices (TMUTCD—Latest Edition with Revisions) during construction.
- 3) No Lanes shall be blocked 7am–9am and 4pm–6:30pm Monday thru Friday.



LEGEND		PSLW SET POLE EXISTING SET POLE EXISTING UTILITY POLE PROPOSED PSLW VAULT (24"x36"x24") EXISTING VAULT PULLBOX MDF LOCATION		SCALE: N.T.S. PAGE: 5 OF: 5		REVISION#1: Rev#1 REVISION#2: Rev#2 REVISION#3: Rev#3 REVISION#4: Rev#4		DATE: Rev#1 Date DATE: Rev#2 Date DATE: Rev#3 Date DATE: Rev#4 Date		Job# 0616-842 PLW Description: Notice of Proposed Utility Installation ADDRESS: Clodine Rd near Bissonnet St CITY/ZIP: Richmond, TX 77407 COUNTY: Fort Bend		TENANTS: WO#: 92988 APPROVED BY:		# OF FLOORS: JOB#: 0616-842 DATE:		DWG#: DRAWN BY: GG DATE: 03/15/17		KEY MAP: 5271	
---------------	--	--	--	--	--	--	--	--	--	--	--	---	--	--	--	--	--	----------------------	--

DISCLAIMER: The use of this standard is governed by the "Texas Engineering Practice Act". No warranty of any kind is made by TxDOT for any purpose whatsoever. TxDOT assumes no responsibility for the design, construction, or use of this standard or for the results of its use.

DATE: FILE:



LEGEND			
	Type 3 Barricade		Channelizing Devices
	Heavy Work Vehicle		Truck Mounted Attenuator (TMA)
	Trailer Mounted Flashing Arrow Board		Portable Changeable Message Sign (PCMS)
	Sign		Traffic Flow
	Flag		Flagger

Posted Speed M	Formula	Minimum Desirable Taper Lengths X'	Suggested Maximum Spacing of Channelizing Devices	Minimum Sign Spacing X'	Suggested Longitudinal Buffer Space B'	Stopping Sight Distance
30	$L = WS$	10' 11' 12'	On a Taper 30' On a Tangent 60'	120'	90'	200'
35		150' 165' 180'	35' 70'	160'	120'	250'
40		205' 225' 245'	40' 80'	240'	155'	305'
45		265' 295' 320'	45' 90'	320'	195'	360'
50		450' 495' 540'	50' 100'	400'	240'	425'
55		550' 605' 660'	55' 110'	500'	295'	495'
60		600' 660' 720'	60' 120'	600'	350'	570'
65		650' 715' 780'	65' 130'	700'	410'	645'
70		700' 770' 840'	70' 140'	800'	475'	730'
75		750' 825' 900'	75' 150'	900'	540'	820'

* Conventional Roads Only

** Taper lengths have been rounded off.

L=Length of Taper (FT) W=Width of Offset (FT) S=Posted Speed (MPH)

TYPICAL USAGE

MOBILE	SHORT DURATION	SHORT TERM STATIONARY	INTERMEDIATE TERM STATIONARY	LONG TERM STATIONARY

GENERAL NOTES

- Flags attached to signs where shown are REQUIRED.
 - All traffic control devices illustrated are REQUIRED, except those denoted with the triangle symbol may be omitted when stated elsewhere in the plans, or for routine maintenance work, when approved by the Engineer.
 - The CW3-4 "BE PREPARED TO STOP" sign may be installed after the CW20-40 "ONE LANE ROAD AHEAD" sign, but proper sign spacing shall be maintained.
 - Sign spacing may be increased or an additional CW20-10 "ROAD WORK AHEAD" sign may be used if advance warning ahead of the flagger or R1-2 "YIELD" sign is less than 1500 feet.
 - A Shadow Vehicle with a TMA should be used anytime it can be positioned 30 to 100 feet in advance of the area of crew exposure without adversely affecting the performance or quality of the work. If workers are no longer present but road or work conditions require the traffic control to remain in place, Type 3 Barricades or other channelizing devices may be substituted for the Shadow Vehicle and TMA.
 - Additional Shadow Vehicles with TMAs may be positioned off the paved surface, next to those shown in order to protect wider work spaces.
- TCP (1-2a)**
- R1-2 "YIELD" sign traffic control may be used on projects with approaches that have adequate sight distance. For projects in urban areas, work spaces should be no longer than one half city block. In rural areas on roadways with less than 2000 ADT, work spaces should be no longer than 400 feet.
 - R1-2 "YIELD" sign with R1-2aP "TO ONCOMING TRAFFIC" plaque shall be placed on a support at a 7 foot minimum mounting height.
- TCP (1-2b)**
- Flaggers should use two-way radios or other methods of communication to control traffic.
 - Length of work space should be based on the ability of flaggers to communicate.
 - If the work space is located near a horizontal or vertical curve, the buffer distances should be increased in order to maintain adequate stopping sight distance to the flagger and a queue of stopped vehicles (see table above).
 - Channelizing devices on the center-line may be omitted when a pilot car is leading traffic and approved by the Engineer.
 - Flaggers should use 24" STOP/SLOW paddles to control traffic. Flags should be limited to emergency situations.

For construction or maintenance contract work, specific project requirements for shadow vehicles can be found in the project GENERAL NOTES for Item 502, Barricades, Signs and Traffic Handling.

Texas Department of Transportation
Traffic Operations Division

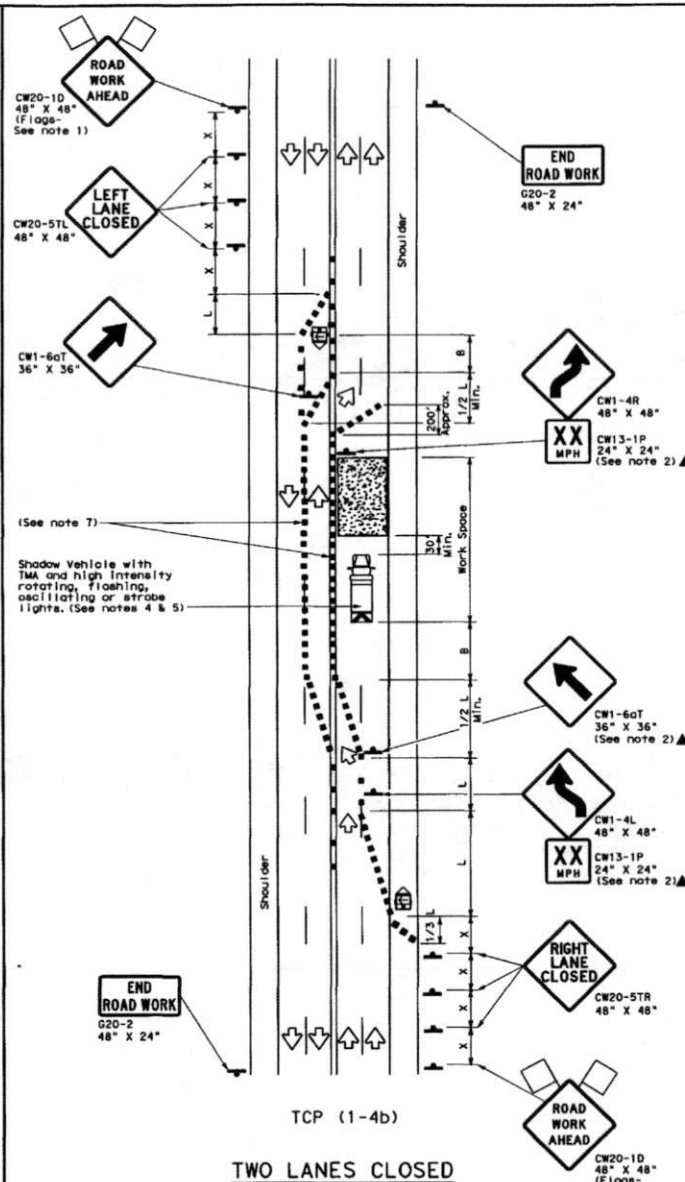
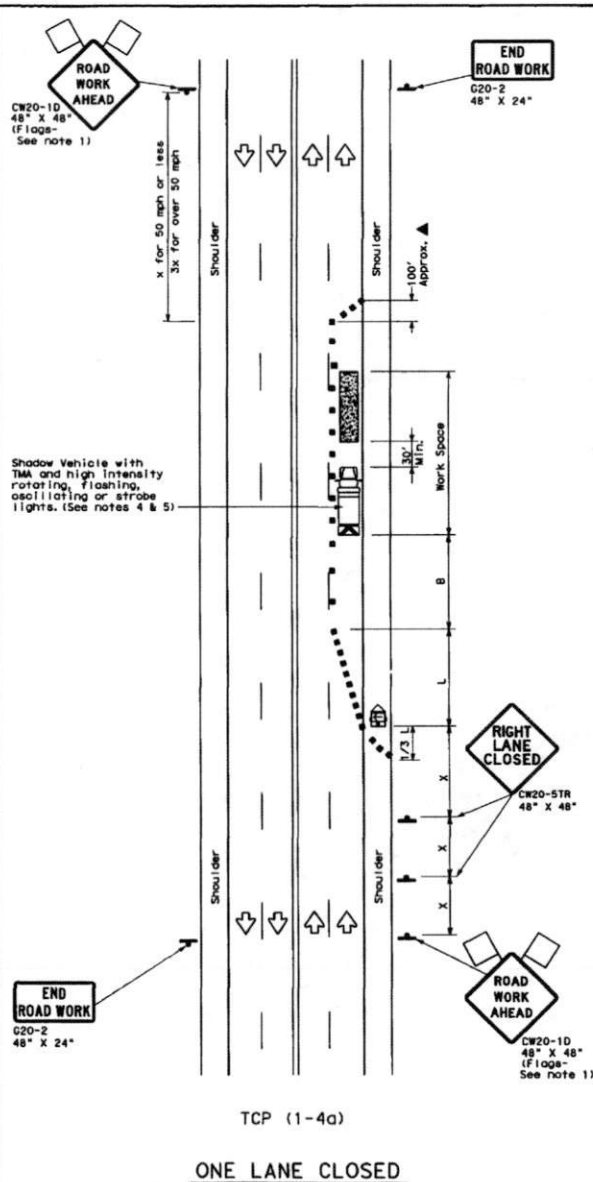
TRAFFIC CONTROL PLAN ONE-LANE TWO-WAY TRAFFIC CONTROL

TCP(1-2)-12

DATE	REVISIONS	DATE	BY	DATE	BY
4-90	1-12				
2-94					
1-97					
4-98					

DISCLAIMER: The use of this standard is governed by the "Texas Engineering Practice Act". No warranty of any kind is made by TxDOT for any purpose whatsoever. TxDOT assumes no responsibility for the consequences of the use of this standard to other forms or for incorrect results or damages resulting from its use.

DATE: FILE:



LEGEND			
	Type 3 Barricade		Channelizing Devices
	Heavy Work Vehicle		Truck Mounted Attenuator (TMA)
	Trailer Mounted Flashing Arrow Board		Portable Changeable Message Sign (PCMS)
	Sign		Traffic Flow
	Flag		Flagger

Posted Speed MPH	Formula	Minimum Desirable Taper Lengths ft	Suggested Maximum Spacing of Channelizing Devices ft	Minimum Sign Spacing ft	Suggested Longitudinal Buffer Space ft
30	$L = WS^2/60$	10' Offset	On a Taper	On a Tangent	90'
35		150'	165'	180'	120'
40		205'	225'	245'	160'
45		265'	295'	320'	240'
50		330'	375'	400'	320'
55		400'	460'	500'	400'
60		475'	550'	600'	500'
65		560'	640'	700'	600'
70		650'	730'	800'	700'
75		750'	825'	900'	800'

* Conventional Roads Only
 ** Taper lengths have been rounded off.
 L=Length of Taper (FT) W=Width of Offset (FT) S=Posted Speed (MPH)

TYPICAL USAGE				
MOBILE	SHORT DURATION	SHORT TERM STATIONARY	INTERMEDIATE TERM STATIONARY	LONG TERM STATIONARY
	✓	✓		

GENERAL NOTES

- Flags attached to signs where shown are REQUIRED.
- All traffic control devices illustrated are REQUIRED, except those denoted with the triangle symbol may be omitted when stated elsewhere in the plans, or for routine maintenance work, when approved by the Engineer.
- The CW20-10 "ROAD WORK AHEAD" sign may be repeated if the visibility of the work zone is less than 1500 feet.
- A Shadow Vehicle with a TMA should be used anytime it can be positioned 30 to 100 feet in advance of the area of crew exposure without adversely affecting the performance or quality of the work. If workers are no longer present but road or work conditions require the traffic control to remain in place, Type 3 Barricades or other channelizing devices may be substituted for the Shadow Vehicle and TMA.
- Additional Shadow Vehicles with TMAs may be positioned off the paved surface, next to those shown in order to protect wider work spaces.
- TCP (1-4a)**
 If this TCP is used for a left lane closure, CW20-5TL "LEFT LANE CLOSED" signs shall be used and channelizing devices shall be placed on the centerline where needed to protect the work space from opposing traffic with the arrow panel placed in the closed lane near the end of the merging taper.
- TCP (1-4b)**
 Where traffic is directed over a yellow centerline, channelizing devices which separate two-way traffic should be spaced on tapers at 20' or 15' if posted speeds are 35 mph or slower, and for tangent sections, at 1/2S where S is the speed in mph. This tighter device spacing is intended for the areas of conflicting markings, not the entire work zone.

For construction or maintenance contract work, specific project requirements for shadow vehicles can be found in the project GENERAL NOTES for Item 502. Barricades, Signs and Traffic Handling.

Texas Department of Transportation
 Traffic Operations Division

TRAFFIC CONTROL PLAN
LANE CLOSURES ON MULTILANE
CONVENTIONAL ROADS

TCP(1-4)-12

① TxDOT December 1995	REV. 10001	REV. 10001	REV. 10001	REV. 10001
2-94	1-12			
8-95				
1-97				
4-98				
154				