



**PERMIT APPLICATION REVIEW FORM FOR
CABLE, CONDUIT, AND POLE LINE ACTIVITY
IN FORT BEND COUNTY**

**Fort Bend County
Engineering Department**
301 Jackson Suite 401
Richmond, Texas 77469
281.633.7500
Permits@fortbendcountytexas.gov

☒ Right of Way Permit
☐ Commercial Driveway Permit
Permit No: 2017-12480

The following "Notice of Proposed Cable, Conduit, and/or Pole Line activity in Fort Bend County" and accompanying attachments have been reviewed and the notice conforms to appropriate regulations set by Commissioner's Court of Fort Bend County, Texas.

(1) COMPLETE APPLICATION FORM:

- | | |
|-------------------------------------|--|
| <input checked="" type="checkbox"/> | a. Name of road, street, and/or drainage ditch affected. |
| <input checked="" type="checkbox"/> | b. Vicinity map showing course of directions |
| <input checked="" type="checkbox"/> | c. Plans and specifications |

(2) BOND:

- | | | | |
|-------------------------------------|--|---|---------------------|
| <input type="checkbox"/> | County Attorney, approval when applicable. | | |
| <input checked="" type="checkbox"/> | Perpetual bond currently posted. | Bond No: [REDACTED] | Amount: \$50,000.00 |
| <input type="checkbox"/> | Performance bond submitted. | Bond No: _____ | Amount: _____ |
| <input type="checkbox"/> | Cashier's Check | Check No: _____ | Amount: _____ |

(3) DRAINAGE DISTRICT APPROVAL (WHEN APPLICABLE):

Drainage District Approval

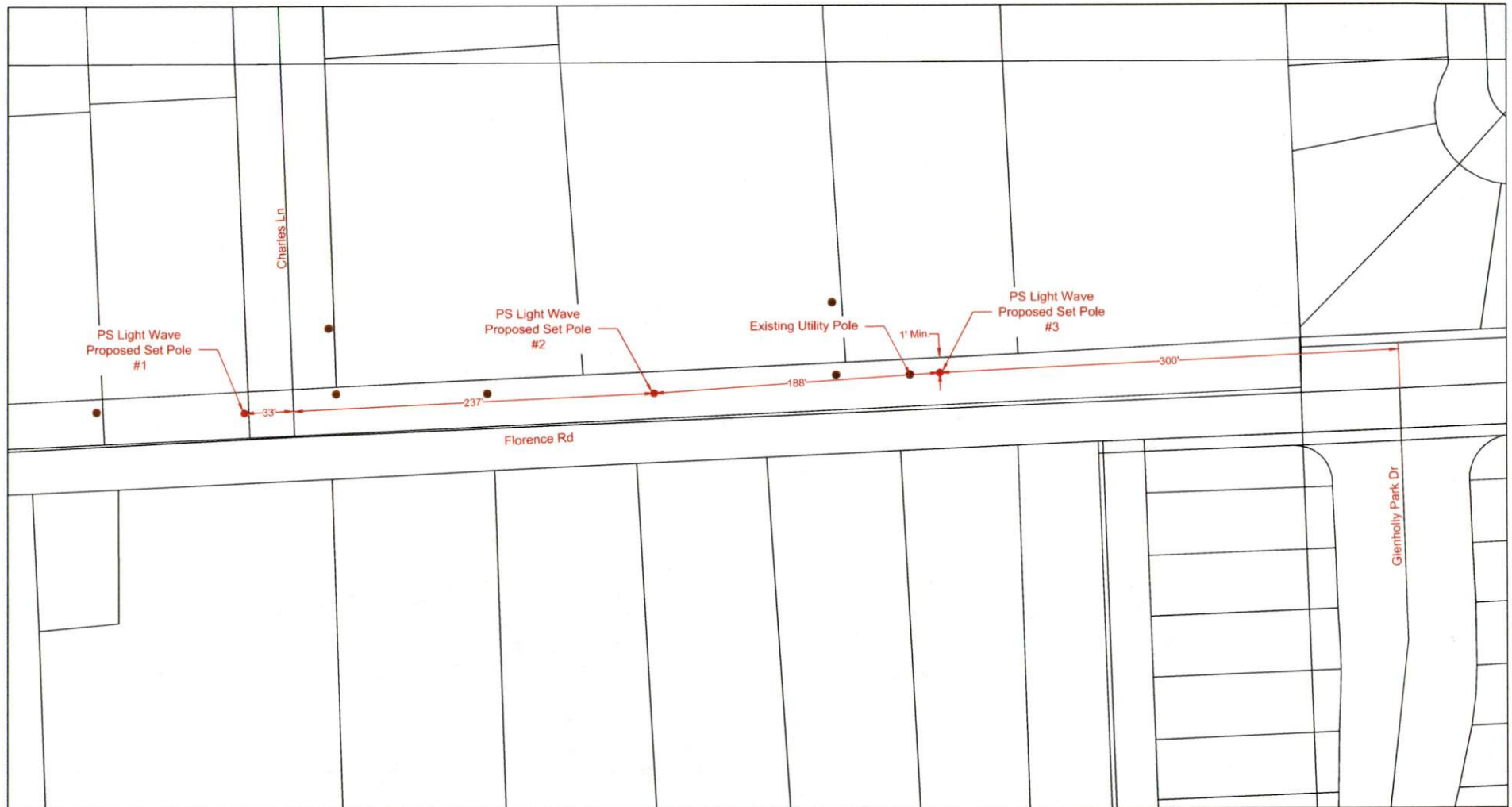
Date

We have reviewed this project and agree it meets minimum requirements.

Chandy O. Ali

Permit Administrator

3/28/17
Date



LEGEND <div> <div>UG 3(1") HDPE W/ F.O. CABLE</div> <div>UG 3(1.25") HDPE W/ F.O. CABLE</div> <div>UG 1(2") HDPE W/ F.O. CABLE</div> <div>UG 1(4") HDPE W/ 3(1.25")HDPE</div> <div>FLEX INNERDUCT</div> <div>AIR AERIAL FIBER OPTIC CABLE</div> <div>CAT5 CAT5 CABLE</div> </div> <div> <div>PROPOSED CONDUIT</div> <div>EXISTING CONDUIT</div> <div>EMT 1.25" EMT</div> <div>R/W RIGHT-OF-WAY</div> <div>EOP EDGE-OF-PAVEMENT</div> <div>FENCE</div> <div>RACK LOCATION</div> </div> <div> <div>PSLW SET POLE</div> <div>EXISTING SET POLE</div> <div>EXISTING UTILITY POLE</div> <div>PROPOSED PSLW VAULT (24"x36"x24")</div> <div>EXISTING VAULT</div> <div>PULLBOX</div> <div>MDF LOCATION</div> </div>		 PS LIGHTWAVE <small>PROPRIETARY INFORMATION - PROPERTY OF PS LIGHTWAVE</small>		CUSTOMER ID: JOB# 0616-842 CUSTOMER: Notice Of Proposed Utility Installation ADDRESS: Florence CITY/ZIP: Sugar Land, TX 77478 COUNTY: Fort Bend TENANTS: # OF FLOORS: DWG#: KEY MAP: 528 X WO#: 84784 JOB#: 0616-842 DRAWN BY: PJE DATE: 03/03/17 APPROVED BY: DATE:			
SCALE: 1"=60' PAGE: 1 OF: 5		REVISION#1: Rev#1 DATE: Rev#1 Date REVISION#2: Rev#2 DATE: Rev#2 Date REVISION#3: Rev#3 DATE: Rev#3 Date REVISION#4: Rev#4 DATE: Rev#4 Date					



<div> <div>UG</div> <div>UG</div> <div>UG</div> <div>UG</div> <div>UG</div> <div>AIR</div> <div>CAT5</div> </div> <div> <div>3(1") HDPE W/ F.O. CABLE</div> <div>3(1.25") HDPE W/ F.O. CABLE</div> <div>1(2") HDPE W/ F.O. CABLE</div> <div>1(4") HDPE W/ 3(1.25")HDPE</div> <div>FLEX INNERDUCT</div> <div>AERIAL FIBER OPTIC CABLE</div> <div>CAT5 CABLE</div> </div>		<div> <div>PROPOSED CONDUIT</div> <div>EXISTING CONDUIT</div> <div>1.25" EMT</div> <div>RIGHT-OF-WAY</div> <div>EDGE-OF-PAVEMENT</div> <div>FENCE</div> <div>RACK LOCATION</div> </div> <div> <div>PROPOSED CONDUIT</div> <div>EXISTING CONDUIT</div> <div>1.25" EMT</div> <div>RIGHT-OF-WAY</div> <div>EDGE-OF-PAVEMENT</div> <div>FENCE</div> <div>RACK LOCATION</div> </div>		<div> <div>PSLW SET POLE</div> <div>EXISTING SET POLE</div> <div>EXISTING UTILITY POLE</div> <div>PROPOSED PSLW VAULT (24"x36"x24")</div> <div>EXISTING VAULT</div> <div>PULLBOX</div> <div>MDF LOCATION</div> </div> <div> <div>PSLW SET POLE</div> <div>EXISTING SET POLE</div> <div>EXISTING UTILITY POLE</div> <div>PROPOSED PSLW VAULT (24"x36"x24")</div> <div>EXISTING VAULT</div> <div>PULLBOX</div> <div>MDF LOCATION</div> </div>		<div> <div>1"=60'</div> <div>PAGE: 2</div> <div>OF: 5</div> </div> <div> <div>SCALE: 1"=60'</div> <div>PAGE: 2</div> <div>OF: 5</div> </div>		<div> <div>REVISION#1: Rev#1</div> <div>REVISION#2: Rev#2</div> <div>REVISION#3: Rev#3</div> <div>REVISION#4: Rev#4</div> </div> <div> <div>DATE: Rev#1 Date</div> <div>DATE: Rev#2 Date</div> <div>DATE: Rev#3 Date</div> <div>DATE: Rev#4 Date</div> </div>		<div> <div>CITY/ZIP: Sugar Land, TX 77478</div> <div>TENANTS:</div> <div>WO#: 84784</div> </div> <div> <div>COUNTY: Fort Bend</div> <div># OF FLOORS:</div> <div>JOB#: 0616-842</div> </div>		<div> <div>APPROVED BY:</div> <div>DATE:</div> </div> <div> <div>APPROVED BY:</div> <div>DATE:</div> </div>	
---	--	---	--	---	--	--	--	---	--	--	--	---	--

LIGHTWAVE

PROPRIETARY INFORMATION - PROPERTY OF PS LIGHTWAVE

CUSTOMER ID:

JOB# 0616-842

CUSTOMER:

Notice Of Proposed Utility Installation

ADDRESS:

Florence

CITY/ZIP:

Sugar Land, TX 77478

COUNTY:

Fort Bend

TENANTS:

OF FLOORS:

DWG#:

KEY MAP: 528 X

WO#: 84784

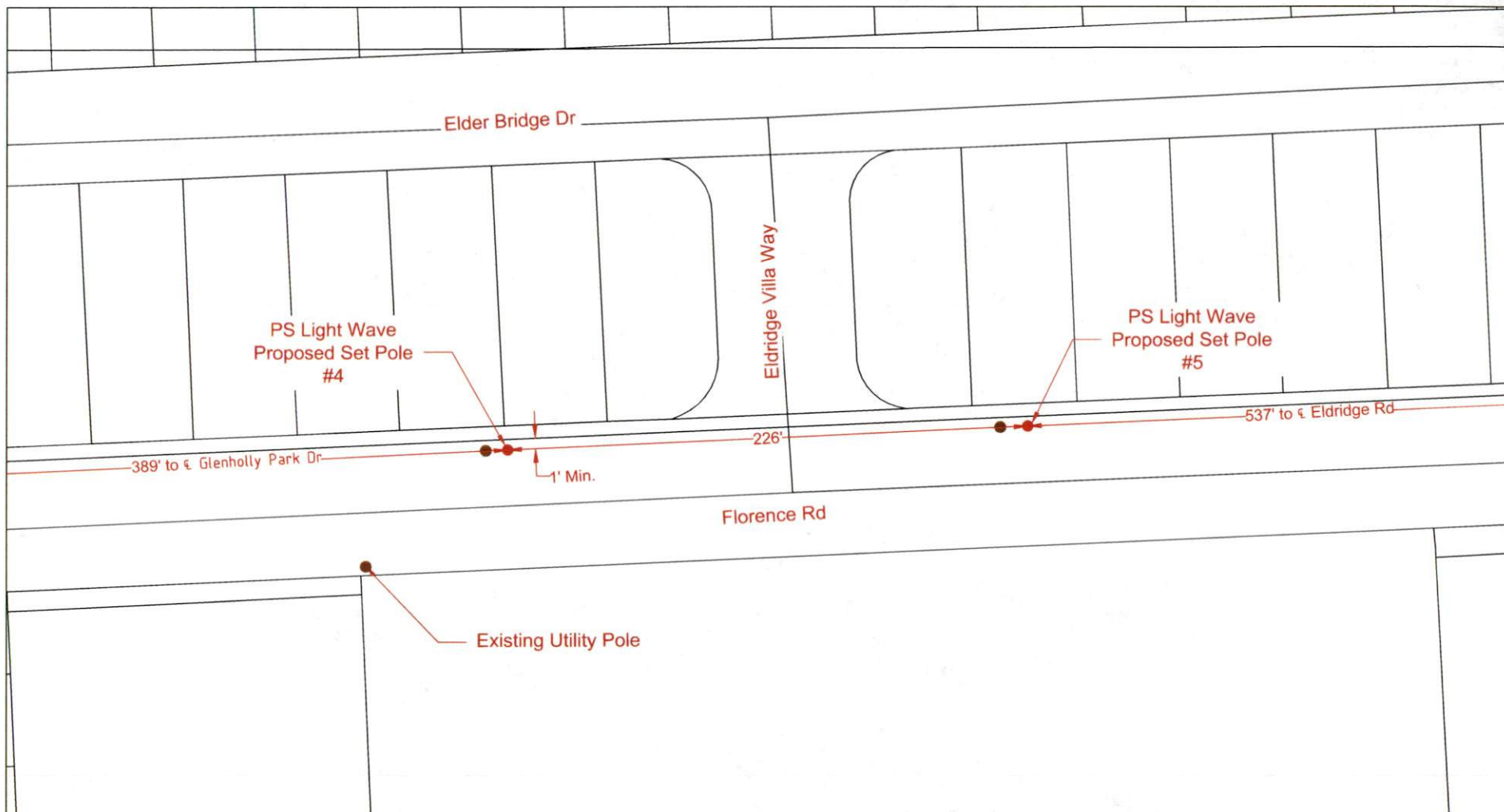
JOB#: 0616-842

DRAWN BY: PJE

DATE: 03/03/17

APPROVED BY:

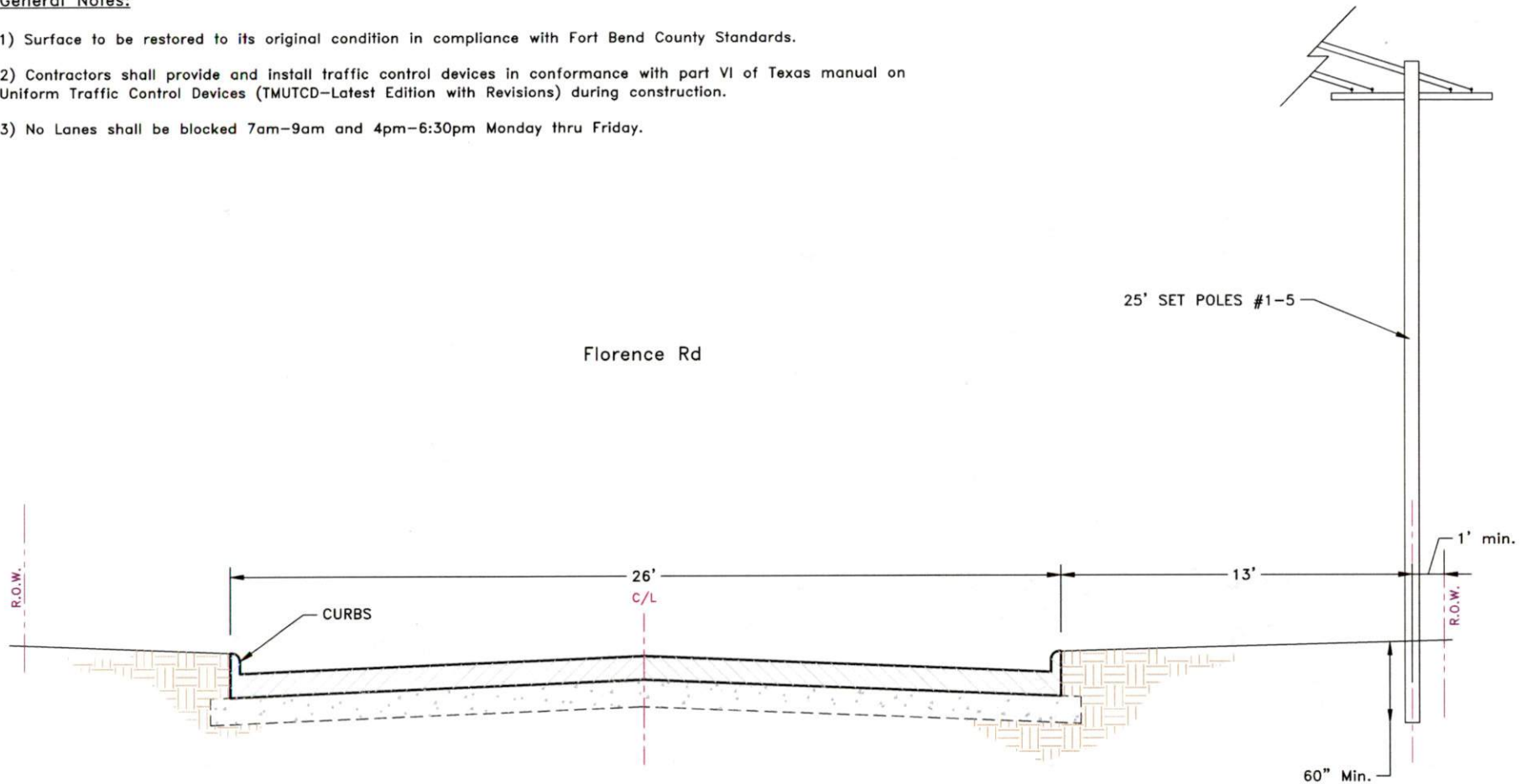
DATE:



LEGEND <div> <div>UG 3(1") HDPE W/ F.O. CABLE</div> <div>UG 3(1.25") HDPE W/ F.O. CABLE</div> <div>UG 1(2") HDPE W/ F.O. CABLE</div> <div>UG 1(4") HDPE W/ 3(1.25")HDPE</div> <div>— FLEX INNERDUCT</div> <div>AIR AERIAL FIBER OPTIC CABLE</div> <div>CAT5 CAT5 CABLE</div> </div> <div> <div>— PROPOSED CONDUIT</div> <div>--- EXISTING CONDUIT</div> <div>EMT 1.25" EMT</div> <div>R/W RIGHT-OF-WAY</div> <div>EOP EDGE-OF-PAVEMENT</div> <div>FENCE</div> <div>RACK LOCATION</div> </div> <div> <div>● PSLW SET POLE</div> <div>● EXISTING SET POLE</div> <div>● EXISTING UTILITY POLE</div> <div>☐ PROPOSED PSLW VAULT (24"x36"x24")</div> <div>■ EXISTING VAULT</div> <div>☒ PULLBOX</div> <div>★ MDF LOCATION</div> </div>						CUSTOMER ID: JOB# 0616-842	
SCALE: 1"=40' PAGE: 3 OF: 5		REVISION#1: Rev#1 REVISION#2: Rev#2 REVISION#3: Rev#3 REVISION#4: Rev#4		DATE: Rev#1 Date DATE: Rev#2 Date DATE: Rev#3 Date DATE: Rev#4 Date		CITY/ZIP: Sugar Land, TX 77478 TENANTS: WO#: 84784 APPROVED BY:	
COUNTY: Fort Bend		# OF FLOORS: JOB#: 0616-842 DRAWN BY: PJE DATE: 03/03/17		DWG#: KEY MAP: 528 X			

General Notes:

- 1) Surface to be restored to its original condition in compliance with Fort Bend County Standards.
- 2) Contractors shall provide and install traffic control devices in conformance with part VI of Texas manual on Uniform Traffic Control Devices (TMUTCD—Latest Edition with Revisions) during construction.
- 3) No Lanes shall be blocked 7am–9am and 4pm–6:30pm Monday thru Friday.

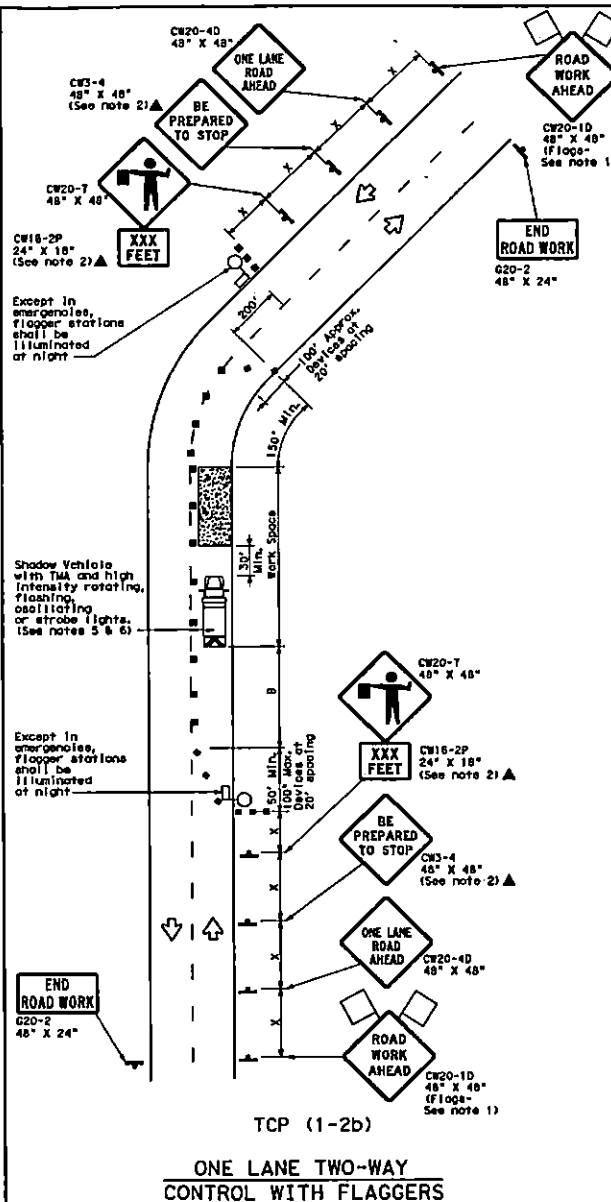
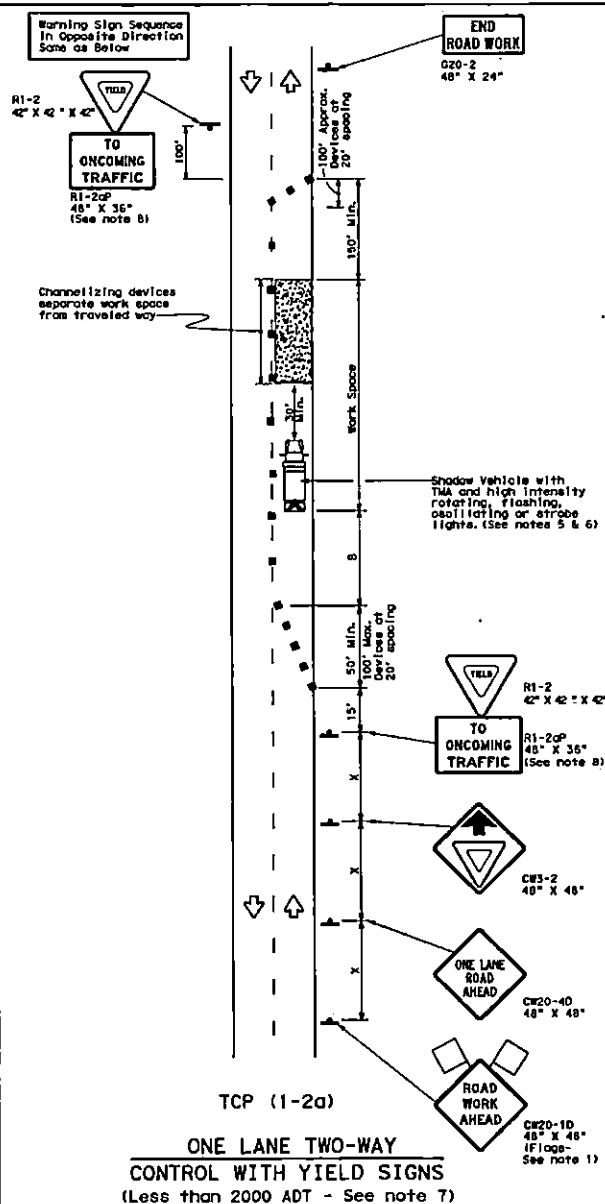












UG	3(1") PVC W/ F.O. CABLE
UG	3(1.25") PVC W/ F.O. CABLE
UG	1(2") PVC W/ F.O. CABLE
UG	1(4") HDPE W/ 3(1.25")PVC
	FLEX INNERDUCT
AIR	AERIAL FIBER OPTIC CABLE
CAT5	CAT5 CABLE

LEGEND	
	PROPOSED CONDUIT
	EXISTING CONDUIT
	EMT 1.25" EMT
	RIGHT-OF-WAY
	EDGE-OF-PAVEMENT
	FENCE
	RACK LOCATION

	PSLW SET POLE
	EXISTING SET POLE
	EXISTING UTILITY POLE
	PROPOSED PSLW VAULT (24"x36"x24")
	EXISTING VAULT
	PULLBOX
	MDF LOCATION

		Job# 0616-842	
		Description: Notice Of Proposed Utility Installation	
SCALE: N.T.S.		ADDRESS: Florence Rd	
PAGE: 5		CITY/ZIP: Sugar Land, TX 77478	
OF: 5		COUNTY: Fort Bend	
REVISION#1: Rev#1		DATE: Rev#1 Date	TENANTS: # OF FLOORS: DWG#:
REVISION#2: Rev#2		DATE: Rev#2 Date	KEY MAP: 528 X
REVISION#3: Rev#3		DATE: Rev#3 Date	WO#: 84784 JOB#: 0616-842
REVISION#4: Rev#4		DATE: Rev#4 Date	DRAWN BY: P.E. DATE: 03/03/17
		APPROVED BY:	DATE:

DATE: _____
FILE: _____

LEGEND			
	Type 3 Barricade		Channelizing Devices
	Heavy Work Vehicle		Truck Mounted Attenuator (TMA)
	Trailer Mounted Flashing Arrow Board		Portable Changeable Message Sign (PCMS)
	Sign		Traffic Flow
	Flag		Flinger

Feared Speed M	Formula	Minimum Desirable Taper Lengths		Suggested Maximum Spacing of Channelizing Devices		Minimum Sight Spacing ft	Suggested Longitudinal Surface Friction ^a	Stopping Sight Distance	
		10'	12'	On a Taper	On a Tangent				
		Offset	Offset	Offset	Offset				
30		150'	165'	180'	30'	60'	120'	90'	200'
35	W = 50	200'	225'	245'	35'	70'	160'	120'	250'
40		265'	295'	320'	40'	80'	240'	150'	305'
45		300'	335'	360'	45'	90'	280'	195'	360'
50		350'	390'	420'	50'	100'	400'	240'	425'
55		400'	445'	480'	55'	110'	500'	295'	495'
60	W = 50	450'	505'	540'	60'	120'	600'	350'	570'
65		500'	555'	590'	65'	130'	700'	410'	645'
70		550'	605'	640'	70'	140'	800'	475'	730'
75		600'	655'	690'	75'	150'	900'	540'	820'

* Conventional Roads Only

***Taper lengths have been rounded off.

L=Length of Topcar (FT) W=Width of Offset (FT) S=Posted Speed (MPH)

TYPICAL USAGE				
MOBILE	SHORT DURATION	SHORT TERM STATIONARY	INTERMEDIATE TERM STATIONARY	LONG TERM STATIONARY
	✓	✓		

GENERAL NOTES

1. Flags attached to signs where shown are REQUIRED.
2. All traffic control devices illustrated are REQUIRED, except those denoted with the triangle symbol may be omitted when stored elsewhere in the place, or for routine maintenance work, when approved by the Engineer.
3. The CW20-42C "BE PREPARED TO STOP" sign may be installed after the CW20-40 "ONE LANE ROAD AHEAD" sign and before the CW20-41 "ROAD NARROWS" sign.
4. Signs spaced may be increased or an additional CW20-10 "ROAD WORK AHEAD" sign may be used if advance warning ahead of the flagger or R-1-2 "YIELD" sign is less than 1500 feet.
5. A Shadow Vehicle with a TMA should be used anytime it can be positioned 30 to 100 feet behind the front of the work zone to warn about adversely affecting the performance or quality of the work. If workers are no longer present but road or work conditions require the traffic control to remain in place, type 3 barricades or other channelizing devices may be substituted for the Shadow Vehicle and TMA.
6. The Shadow Vehicle with a TMA should be positioned off the paved surface, next to the edge of the travel lane, to prevent vider's eye exposure.

TCP (1-2a)

7. R1-2 "YIELD" sign traffic control may be used on projects with approaches that have adequate sight distance. For projects in urban areas, work spaces should be no longer than one half city block. In rural areas on roadways with less than 2000 ADT, work spaces should be no longer than 400 feet.
8. R1-2 "YIELD" sign with R1-2aP "TO ONCOMING TRAFFIC" plaque shall be placed on a support at a 7 foot minimum mounting height.

TCP (1-2b)

9. Flaggers should use two-way radios or other methods of communication to control traffic.
10. Length of work space should be based on the ability of flaggers to coordinate.
11. If the work space is located near a horizontal or vertical curve, the buffer distances should be increased in order to maintain adequate stopping sight distance to the flagger and a queue of stopped vehicles (see table above).
12. Channelizing devices on the center-line may be omitted when a pilot car is leading traffic and approved by the Engineer.
13. Flaggers should use STOP/SLOW paddles to control traffic. Flags should be limited to emergency situations.

For construction or maintenance contract work, specific project requirements for shadow vehicles can be found in the project GENERAL NOTES for Item 502, Barricades, Signs and Traffic Handling.

 **Texas Department of Transportation**
Traffic Operations Division

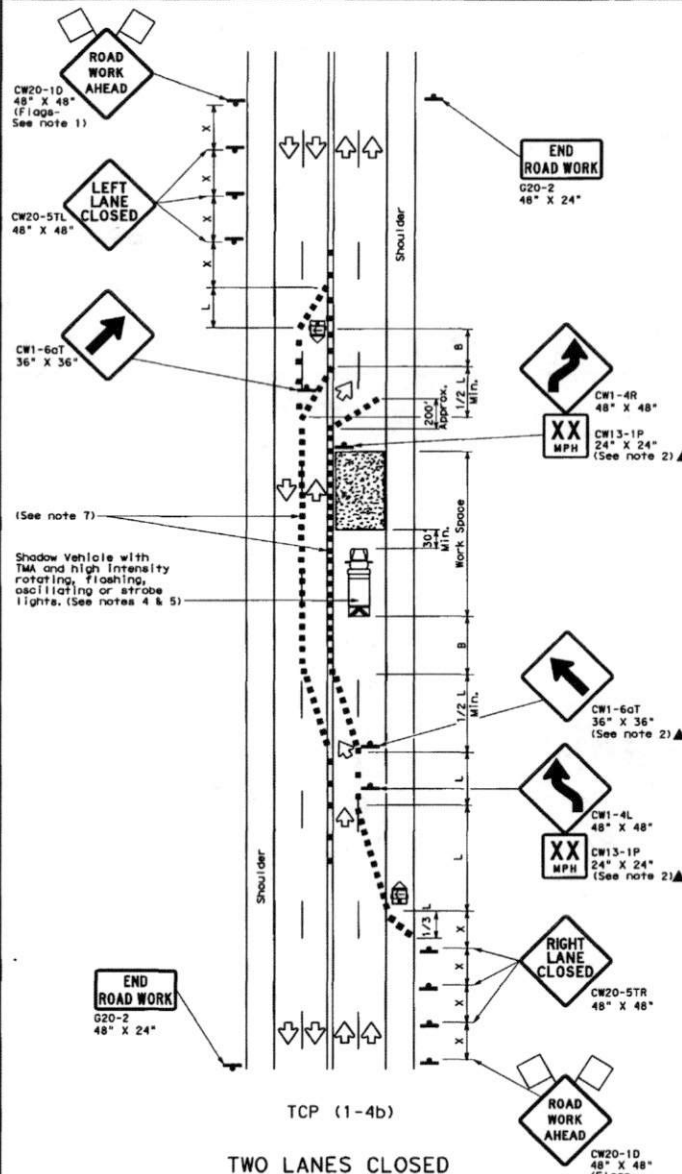
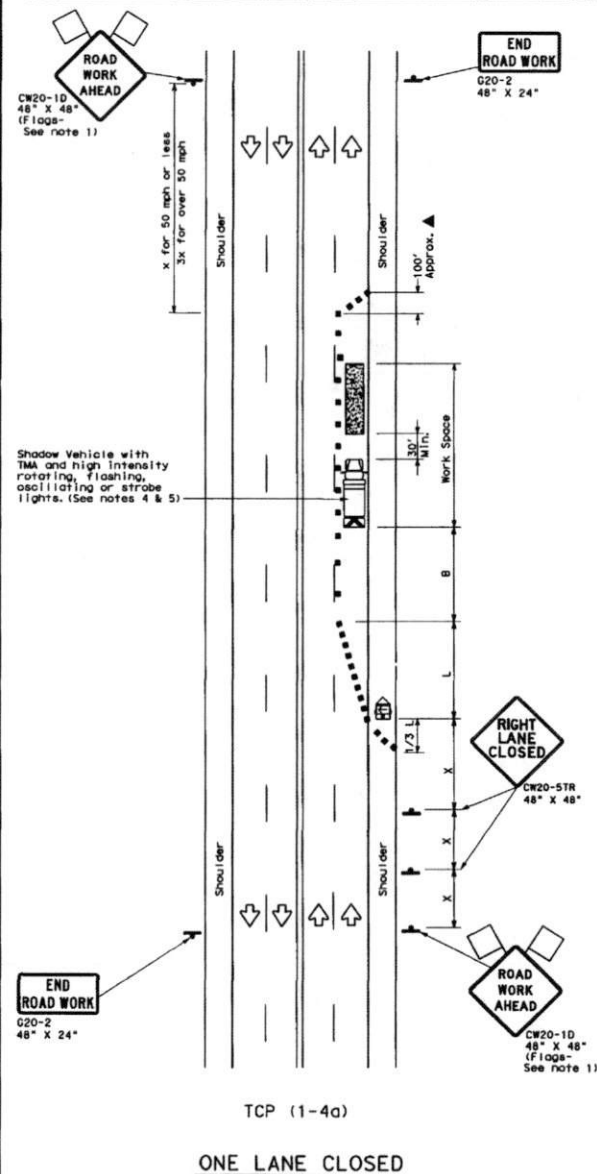
TRAFFIC CONTROL PLAN
ONE-LANE TWO-WAY
TRAFFIC CONTROL

TCP (1-2)-12

C12007 December 1965		ONE TADOT	ONE TADOT	ONE TADOT	ONE TADOT
REGIONS		CONT	REG	JOB	REMARKS
4-90	1-12				
2-94					
1-97		DIST	COUNTRY		SHEET NO
4-98					

DISCLAIMER: The use of this standard is governed by the "Texas Engineering Practices Act". No warranty of any kind is made by the Department of Transportation for the use of this standard for any purpose other than that for which it was intended. The Department of Transportation is not responsible for any damages resulting from the use of this standard.

DATE: FILE:



LEGEND	
	Type 3 Barricade
	Heavy Work Vehicle
	Trailer Mounted Flashing Arrow Board
	Sign
	Flag
	Channelizing Devices
	Truck Mounted Attenuator (TMA)
	Portable Changeable Message Sign (PCMS)
	Traffic Flow
	Flagger

Posted Speed MPH	Formula	Minimum Desirable Taper Lengths (ft)			Suggested Maximum Spacing of Channelizing Devices (ft)		Minimum Sign Spacing (ft)	Suggested Longitudinal Buffer Space (ft)
		10' Offset	11' Offset	12' Offset	On a Taper	On a Tangent		
30	L = WS ² / 60	150'	165'	180'	30'	60'	120'	90'
35		205'	225'	245'	35'	70'	160'	120'
40	L = WS	265'	295'	320'	40'	80'	240'	155'
45		450'	495'	540'	45'	90'	320'	195'
50	L = WS	500'	550'	600'	50'	100'	400'	240'
55		550'	605'	660'	55'	110'	500'	295'
60	L = WS	600'	660'	720'	60'	120'	600'	350'
65		650'	715'	780'	65'	130'	700'	410'
70	L = WS	700'	770'	840'	70'	140'	800'	475'
75		750'	825'	900'	75'	150'	900'	540'

* Conventional Roads Only
* Taper lengths have been rounded off.
L=Length of Taper (FT) W=Width of Offset (FT) S=Posted Speed (MPH)

TYPICAL USAGE			
MOBILE	SHORT DURATION	SHORT TERM STATIONARY	LONG TERM STATIONARY
	✓	✓	

GENERAL NOTES

- Flags attached to signs where shown are REQUIRED.
- All traffic control devices illustrated are REQUIRED, except those denoted with the triangle symbol may be omitted when stated elsewhere in the plans, or for routine maintenance work, when approved by the Engineer.
- The CW20-10 "ROAD WORK AHEAD" sign may be repeated if the visibility of the work zone is less than 1500 feet.
- A Shadow Vehicle with a TMA should be used anytime it can be positioned 30 to 100 feet in advance of the area of crew exposure without adversely affecting the performance or quality of the work. If workers are no longer present but road or work conditions require the traffic control to remain in place, Type 3 Barricades or other channelizing devices may be substituted for the Shadow Vehicle and TMA.
- Additional Shadow Vehicles with TMAs may be positioned off the paved surface, next to those shown in order to protect wider work spaces.

TCP (1-4a)

- If this TCP is used for a left lane closure, CW20-STL "LEFT LANE CLOSED" signs shall be used and channelizing devices shall be placed on the centerline where needed to protect the work space from opposing traffic with the arrow panel placed in the closed lane near the end of the merging taper.

TCP (1-4b)

- Where traffic is directed over a yellow centerline, channelizing devices which separate two-way traffic should be spaced on tapers at 20' or 15' if posted speeds are 35 mph or slower, and for tangent sections, at 1/2S where S is the speed in mph. This tighter device spacing is intended for the areas of conflicting markings, not the entire work zone.

For construction or maintenance contract work, specific project requirements for shadow vehicles can be found in the project GENERAL NOTES for Item 502, Barricades, Signs and Traffic Handling.

Texas Department of Transportation
Traffic Operations Division

TRAFFIC CONTROL PLAN LANE CLOSURES ON MULTILANE CONVENTIONAL ROADS

TCP (1-4) - 12

REV	DATE	BY	CHK	APP	REASON
1	1-12	CON	SECT	JOB	REMARK
2	3-94	1-12			
3	8-95				
4	1-97				
5	4-98				

154