

**REVIEW BY FORT BEND COUNTY
COMMISSIONERS COURT**

**Fort Bend County
Engineering Department**
301 Jackson Suite 401
Richmond, Texas 77469
281.633.7500
Permits@fortbendcountytx.gov



Right of Way Permit



Commercial Driveway Permit

Permit No: 2017-11400

Applicant: PS Light Wave, Inc

Job Location Site: Grassy Knolls, Sugar Land, TX 77479

Bond No. **Date of Bond:** 12/13/2016 **Amount:** \$50,000.00

The above applicant came to make use of certain Fort Bend County property subject to, "The Order Regulating the Laying, Construction, Maintenance, and Repair of Buried Cables, Conduits, and Pole Lines, In, Under, Across or Along Roads, Streets, Highways, and Drainage Ditches in Fort Bend County, Texas, Under the Jurisdiction of the Commissioners Court of Fort Bend County, Texas," as passed by the Commissioners Court of Fort Bend County, Texas, of the Minutes of the Commissioners Court of Fort Bend County, Texas, to the extent that such order is not inconsistent with Chapter 181, Vernon's Texas Statutes and Codes Annotated.

Notes:

1. Evidence of review by the Commissioners Court must be kept on the job site and failure to do so constitutes grounds for job shutdown.
2. Written notices are required:
 - a. 48 hours in advance of construction start up, and
 - b. When construction is completed and ready for final inspection, submit notification to Permit Administrator thru MyGovernmentOnline.org portal.
3. This permit expires one (1) year from date of permit if construction has not commenced.

On this 24th day of January, 2017, Upon Motion of Commissioner Meyers, seconded by Commissioner Morales, duly put and carried, it is ORDERED, ADJUDGED AND DECREED that said notice of said above purpose is hereby acknowledged by the Commissioners Court of Fort Bend County, Texas, and that said notice be placed on record according to the regulation order thereof.

Signature

Presented to Commissioners Court and approved.

By: Charles O. Ay
County Engineer

Date Recorded 2-1-17 Comm. Court No. 15N

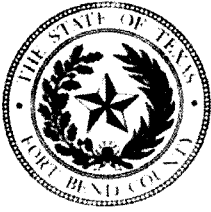
By: N/A

Drainage District Engineer/Manager

Clerk of Commissioners Court

By: Randy Wilho

Deputy



**PERMIT APPLICATION REVIEW FORM FOR
CABLE, CONDUIT, AND POLE LINE ACTIVITY
IN FORT BEND COUNTY**

**Fort Bend County
Engineering Department**
301 Jackson Suite 401
Richmond, Texas 77469
281.633.7500
Permits@fortbendcountytx.gov

- ☒ Right of Way Permit
☐ Commercial Driveway Permit

Permit No: 2017-11400

The following "Notice of Proposed Cable, Conduit, and/or Pole Line activity in Fort Bend County" and accompanying attachments have been reviewed and the notice conforms to appropriate regulations set by Commissioner's Court of Fort Bend County, Texas.

(1) COMPLETE APPLICATION FORM:

- ☒ a. Name of road, street, and/or drainage ditch affected.
☒ b. Vicinity map showing course of directions
☒ c. Plans and specifications

(2) BOND:

- ☐ County Attorney, approval when applicable.
- ☒ Perpetual bond currently posted. Bond No: [REDACTED] Amount: \$50,000.00
- ☐ Performance bond submitted. Bond No: _____ Amount: _____
- ☐ Cashier's Check Check No: _____ Amount: _____

(3) DRAINAGE DISTRICT APPROVAL (WHEN APPLICABLE):

Drainage District Approval

Date

We have reviewed this project and agree it meets minimum requirements.

Charles O. Ay

Permit Administrator

1/17/17

Date



LEGEND			
UG	3(1") HDPE W/ FIBER OPTIC CABLE	PROPOSED CONDUIT	PSLW SET POLE
UG	3(1.25") HDPE W/ FIBER OPTIC CABLE	EXISTING CONDUIT	EXISTING UTILITY POLE
UG	1(2") HDPE W/ FIBER OPTIC CABLE	EMT	PROPOSED PSLW VAULT (24"x36"x24")
UG	1(4") HDPE W/ 3(1.25")HDPE	R/W	EXISTING VAULT
	FLEX INNERDUCT (INSIDE)	EOP	PULLBOX
AIR	AERIAL FIBER OPTIC CABLE	FENCE	MDF LOCATION
CATS	CATS CABLE	RACK LOCATION	

SCALE: 1"=40'

PAGE: 1

OF: 3

PROPRIETARY INFORMATION - PROPERTY OF PS LIGHTWAVE

REVISION#1: Rev1	DATE: Rev1 Date
REVISION#2: Rev2	DATE: Rev2 Date
REVISION#3: Rev3	DATE: Rev3 Date
REVISION#4: Rev4	DATE: Rev4 Date

CUSTOMER ID: JOB# 0616-842

CUSTOMER: Notice of Proposed Utility Installation

ADDRESS: Grassy Knolls between Pebblestone Walk and Bridgeton Ct

CITY/ZIP: Sugar Land, TX 77479

TENANTS: # OF FLOORS: DWG#: KEY MAP: 6070

WO# 90325 JOB# 0616-842 DRAWN BY: GC DATE: 12/27/16

APPROVED BY: DATE:

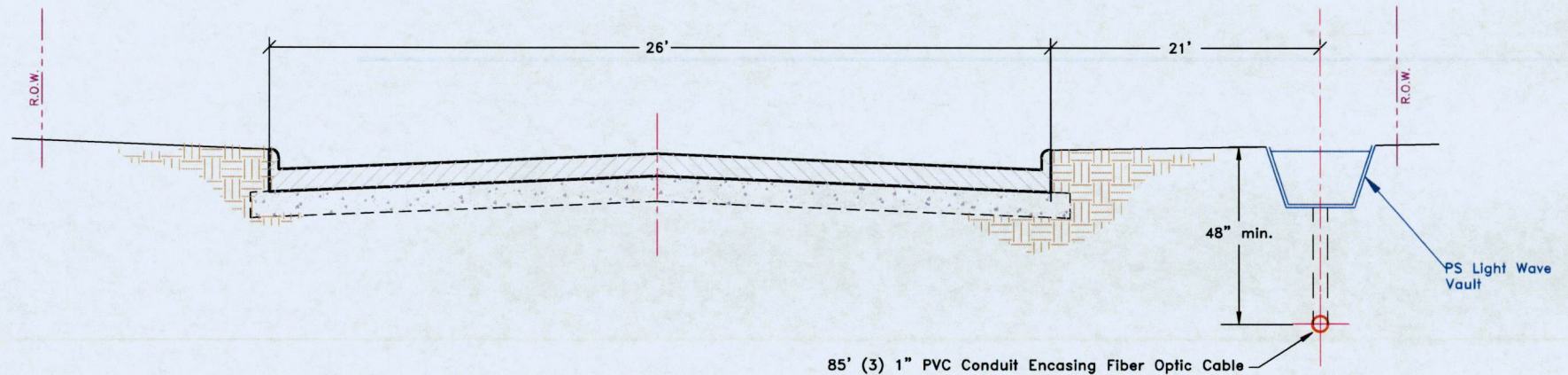


LEGEND <div> <div>UG</div> <div>3(1") HDPE W/ FIBER OPTIC CABLE</div> </div> <div> <div>UG</div> <div>3(1.25") HDPE W/ FIBER OPTIC CABLE</div> </div> <div> <div>UG</div> <div>1(2") HDPE W/ FIBER OPTIC CABLE</div> </div> <div> <div>UG</div> <div>1(4") HDPE W/ 3(1.25")HDPE</div> </div> <div> <div></div> <div>FLEX INNERDUCT (INSIDE)</div> </div> <div> <div>AIR</div> <div>AERIAL FIBER OPTIC CABLE</div> </div> <div> <div>CAT5</div> <div>CAT5 CABLE</div> </div>		<div> <div></div> <div>PROPOSED CONDUIT</div> </div> <div> <div></div> <div>EXISTING CONDUIT</div> </div> <div> <div>EMT</div> <div>1.25" EMT</div> </div> <div> <div>R/W</div> <div>RIGHT-OF-WAY</div> </div> <div> <div>EOP</div> <div>EDGE-OF-PAVEMENT</div> </div> <div> <div></div> <div>FENCE</div> </div> <div> <div></div> <div>RACK LOCATION</div> </div>		<div> <div></div> <div>PSLW SET POLE</div> </div> <div> <div></div> <div>EXISTING UTILITY POLE</div> </div> <div> <div></div> <div>PROPOSED PSLW VAULT (24"x36"x24")</div> </div> <div> <div></div> <div>EXISTING VAULT</div> </div> <div> <div></div> <div>PULLBOX</div> </div> <div> <div></div> <div>MDF LOCATION</div> </div>		<div> <div></div> <div>SCALE: 1"=40'</div> </div> <div> <div>PAGE: 2</div> <div>OF: 3</div> </div>		<div> <div> <div>PS LIGHTWAVE</div> <div>PROPRIETARY INFORMATION - PROPERTY OF PS LIGHTWAVE</div> </div> <div> <div>REVISION#1: Rev#1</div> <div>DATE: Rev#1 Date</div> </div> <div> <div>REVISION#2: Rev#2</div> <div>DATE: Rev#2 Date</div> </div> <div> <div>REVISION#3: Rev#3</div> <div>DATE: Rev#3 Date</div> </div> <div> <div>REVISION#4: Rev#4</div> <div>DATE: Rev#4 Date</div> </div> </div>		<div> <div>CUSTOMER ID:</div> <div>JOB# 0616-842</div> </div> <div> <div>CUSTOMER:</div> <div>Notice of Proposed Utility Installation</div> </div> <div> <div>ADDRESS:</div> <div>Grassy Knolls between Pebblestone Walk and Bridgeton Ct</div> </div> <div> <div>CITY/ZIP:</div> <div>Sugar Land, TX 77479</div> </div> <div> <div>COUNTY:</div> <div>Fort Bend</div> </div> <div> <div>TENANTS:</div> <div></div> </div> <div> <div># OF FLOORS:</div> <div></div> </div> <div> <div>DWG#:</div> <div></div> </div> <div> <div>KEY MAP:</div> <div>6070</div> </div> <div> <div>WO#:</div> <div>90325</div> </div> <div> <div>JOB#:</div> <div>0616-842</div> </div> <div> <div>DRAWN BY:</div> <div>GG</div> </div> <div> <div>DATE:</div> <div>12/27/16</div> </div> <div> <div>APPROVED BY:</div> <div></div> </div> <div> <div>DATE:</div> <div></div> </div>			
---	--	--	--	---	--	--	--	---	--	---	--	--	--

General Notes:

- 1) Surface to be restored to its original condition in compliance with city of Sugar Land Standards.
- 2) Contractors shall provide and install traffic control devices in conformance with part VI of Texas manual on Uniform Traffic Control Devices (TMUTCD-Latest Edition with Revisions) during construction.
- 3) No Lanes shall be blocked 7am-9am and 4pm-6:30pm Monday thru Friday.

GRASSY KNOLLS



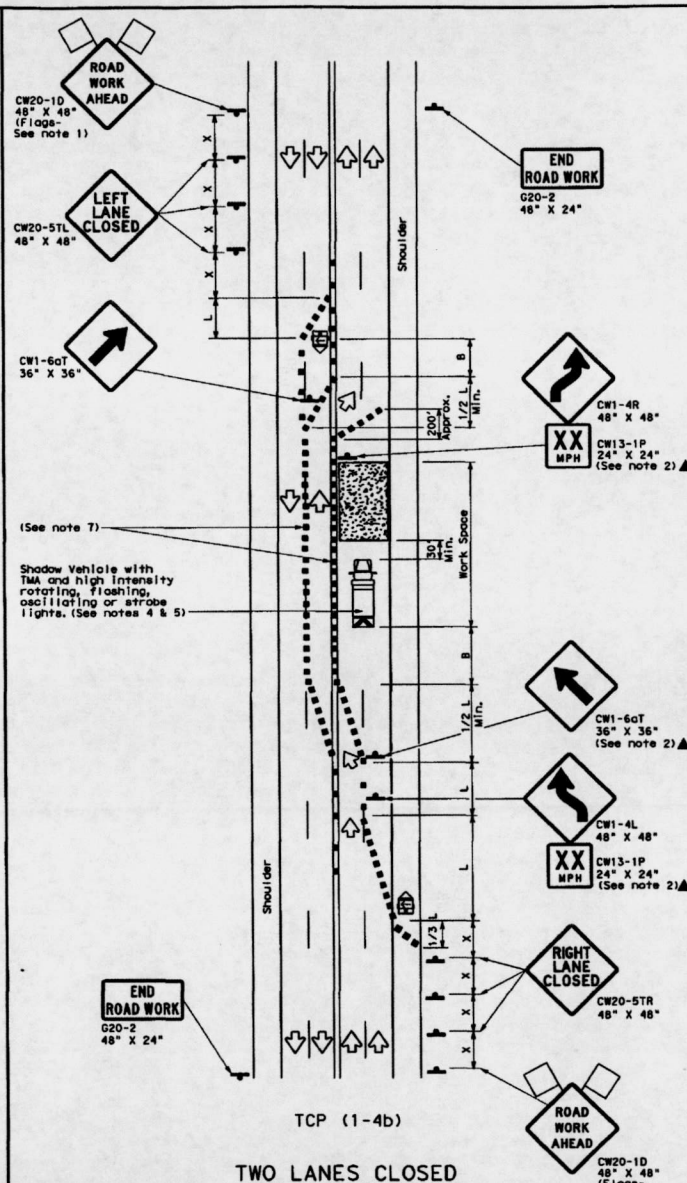
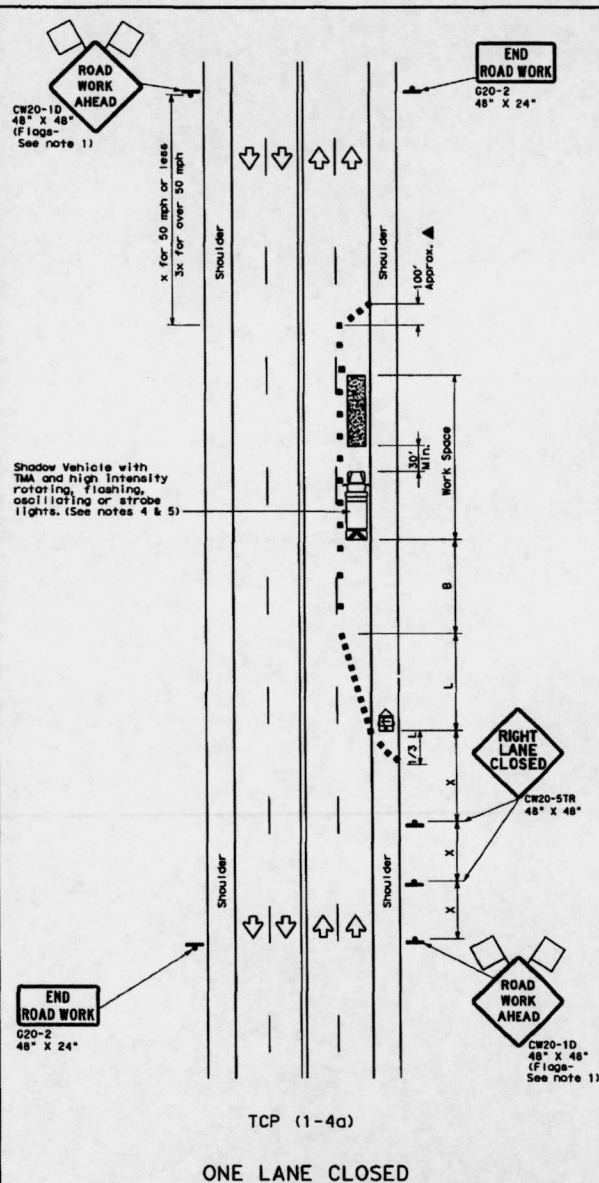
85' (3) 1" PVC Conduit Encasing Fiber Optic Cable

LEGEND			
UG	3(1") PVC W/ FIBER OPTIC CABLE	PROPOSED CONDUIT	PSLW SET POLE
UG	3(1.25") PVC W/ FIBER OPTIC CABLE	EXISTING CONDUIT	EXISTING UTILITY POLE
UG	1(2") PVC W/ FIBER OPTIC CABLE	EMT	PROPOSED PSLW VAULT (36"x24"x24")
UG	1(4") HDPE W/ 3(1.25")PVC	R/W	EXISTING VAULT
	FLEX INNERDUCT (INSIDE)	EOP	PULLBOX
AIR	AERIAL FIBER OPTIC CABLE	FENCE	MDF LOCATION
CAT5	CAT5 CABLE	RACK LOCATION	

<p>PROPRIETARY INFORMATION - PROPERTY OF PS LIGHTWAVE</p>				Job# 0616-842 PLW			
				Description: Notice Of Proposed Utility Installation			
REVISION#1: Rev#1				CITY/ZIP: Sugar Land, TX 77479			
REVISION#2: Rev#2				COUNTY: Fort Bend			
REVISION#3: Rev#3				TENANTS: # OF FLOORS: DWG# KEY MAP: 607D			
REVISION#4: Rev#4				WO#: 90325 JOB#: 0616-842 DRAWN BY: GG DATE: 12/27/16			
SCALE: N.T.S.				APPROVED BY: DATE:			
PAGE: 3							
OF: 3							

DISCLAIMER: The use of this standard is governed by the "Texas Engineering Practice Act". No warranty of any kind is made by TxDOT for any purpose whatsoever. TxDOT assumes no responsibility for the correct application of this standard to other forms or for incorrect results or damages resulting from its use.

DATE: FILE:



LEGEND			
	Type 3 Barricade		Channelizing Devices
	Heavy Work Vehicle		Truck Mounted Attenuator (TMA)
	Trailer Mounted Flashing Arrow Board		Portable Changeable Message Sign (PCMS)
	Sign		Traffic Flow
	Flag		Flagger

Posted Speed #	Formula	Minimum Desirable Taper Lengths #'		Suggested Maximum Spacing of Channelizing Devices		Minimum Sign Spacing "x" Distance	Suggested Longitudinal Buffer Space #'	
		10' Offset	12' Offset	On a Taper	On a Tangent			
30	L = WS 60	150'	165'	180'	30'	60'	120'	90'
35		205'	225'	245'	35'	70'	160'	120'
40		265'	295'	320'	40'	80'	240'	155'
45	L = WS	450'	495'	540'	45'	90'	320'	195'
50		500'	550'	600'	50'	100'	400'	240'
55		550'	605'	660'	55'	110'	500'	295'
60		600'	660'	720'	60'	120'	600'	350'
65		650'	715'	780'	65'	130'	700'	410'
70		700'	770'	840'	70'	140'	800'	475'
75		750'	825'	900'	75'	150'	900'	540'

* Conventional Roads Only
 ** Taper lengths have been rounded off.
 L=Length of Taper (FT) W=Width of Offset (FT) S=Posted Speed (MPH)

TYPICAL USAGE			
MOBILE	SHORT DURATION	SHORT TERM STATIONARY	LONG TERM STATIONARY
	✓	✓	

- GENERAL NOTES**
- Flags attached to signs where shown are REQUIRED.
 - All traffic control devices illustrated are REQUIRED, except those denoted with the triangle symbol may be omitted when stated elsewhere in the plans, or for routine maintenance work, when approved by the Engineer.
 - The CW20-10 "ROAD WORK AHEAD" sign may be repeated if the visibility of the work zone is less than 1500 feet.
 - A Shadow Vehicle with a TMA should be used anytime it can be positioned 30 to 100 feet in advance of the area of crew exposure without adversely affecting the performance or quality of the work. If workers are no longer present but road or work conditions require the traffic control to remain in place, Type 3 Barricades or other channelizing devices may be substituted for the Shadow Vehicle and TMA.
 - Additional Shadow Vehicles with TMAs may be positioned off the paved surface, next to those shown in order to protect wider work spaces.
- TCP (1-4a)**
- If this TCP is used for a left lane closure, CW20-STL "LEFT LANE CLOSED" signs shall be used and channelizing devices shall be placed on the centerline where needed to protect the work space from opposing traffic with the arrow panel in the closed lane near the end of the merging taper.
- TCP (1-4b)**
- Where traffic is directed over a yellow centerline, channelizing devices which separate two-way traffic should be spaced on tapers at 20' or 15' if posted speeds are 35 mph or slower, and for tangent sections, at 1/2S where S is the speed in mph. This tighter device spacing is intended for the areas of conflicting markings, not the entire work zone.

For construction or maintenance contract work, specific project requirements for shadow vehicles can be found in the project GENERAL NOTES for Item 502, Barricades, Signs and Traffic Handling.

Texas Department of Transportation
 Traffic Operations Division

TRAFFIC CONTROL PLAN
LANE CLOSURES ON MULTILANE
CONVENTIONAL ROADS

TCP (1-4)-12

© TxDOT December 1985	REVISED	CON	SECT	JOB	REVISION
2-84	1-12				
8-85					
1-87					
4-88					
154					