

REVIEW BY FORT BEND COUNTY COMMISSIONERS COURT

On this 1st day of November, 2016, Commissioners Court came on to be heard and reviewed the accompanying notice of Andrade Concrete & Construction Inc. Job Location 4503 Los Alamos Court, Richmond Tx, TX 77406 Date 11/10/2015 Bond No. 5206849, Permit No. 2016-10062 to make use of certain Fort Bend County property subject to, "A Revised Order Regulating the Laying, Construction, Maintenance, and Repair of Buried Cables, Conduits, and Pole Lines, In, Under, Across or Along Roads, Streets, Highways, and Drainage Ditches in Fort Bend County, Texas, Under the Jurisdiction of the Commissioners Court of Fort Bend County, Texas," as passed by the Commissioners Court of Fort Bend County, Texas the 3rd day of August, 1987, recorded in Volume _____ of the Minutes of the Commissioners Court of Fort Bend County, Texas, to the extent that such order is not inconsistent with Article 1436a, Vernon's Texas Civil Statutes. Upon Motion of Commissioner Meyers, seconded by Commissioner Monison, duly put and carried, it is ORDERED, ADJUDGED AND DECREED that said notice of said above purpose is hereby acknowledged by the Commissioners Court of Fort Bend County, Texas, and that said notice be placed on record according to the regulation order thereof.

Notes:

1. Evidence of review by the Commissioners Court must be kept on the job site and failure to do so constitutes grounds for job shutdown.
2. Written notices are required:
 - a. 48 hours in advance of construction start up, and
 - b. when construction is completed and ready for final inspection
 Mail notices to: Permit Administrator
 Fort Bend County Engineering
 301 Jackson Street
 Richmond, Texas 77469
 281-633-7500
3. This permit expires one (1) year from date of permit if construction has not commenced.

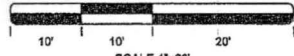
By: Charles O. Dy
for County Engineer

By: N/A
Drainage District Engineer/Manager

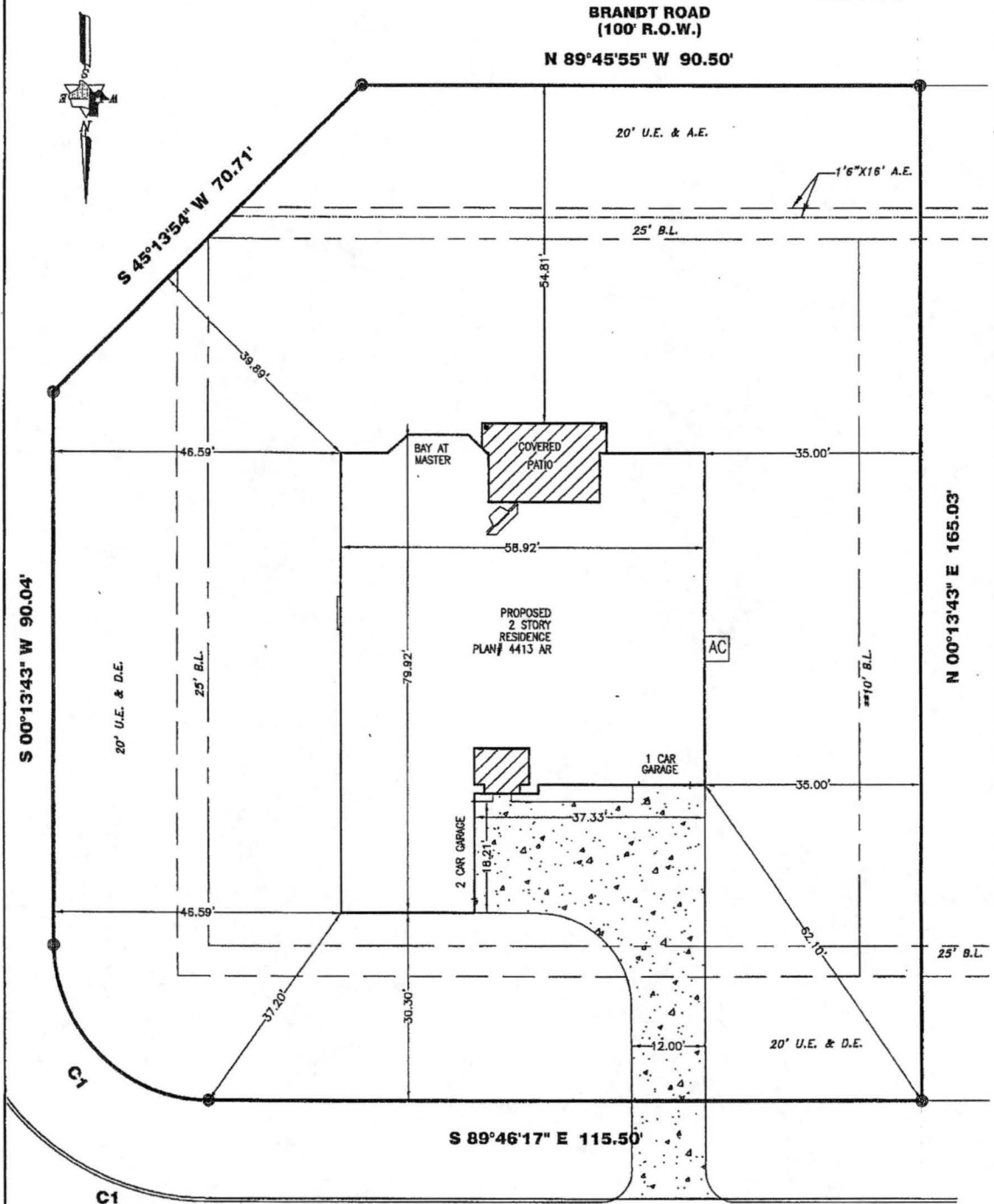
Presented to Commissioners Court and approved.
Recorded in Volume 11/1/16 12C
Minutes of Commissioners Court

Clerk of Commissioners Court
By: [Signature]
Deputy **RENEE MICHULKA**

* CITY ORDINANCES
 ** RESTRICTIVE COVENANTS
 *** BUILDER GUIDELINES
 () RECORD INFORMATION



SCALE 1"=20'
 SHEET 2 OF 2



PLAN OPTIONS:

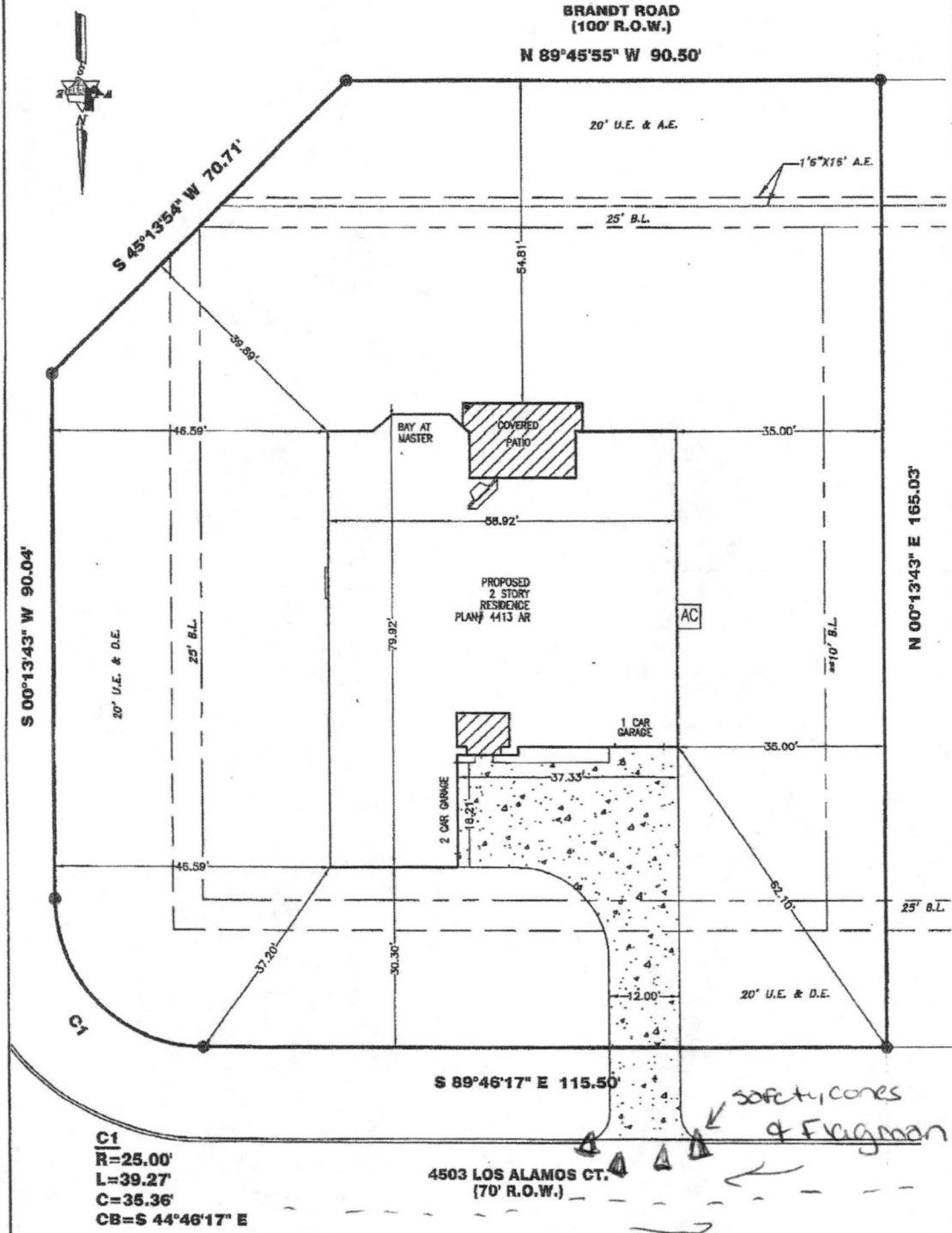
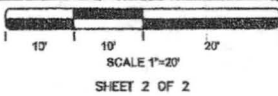
- STD. BRICK BACK 1st FLOOR
- 42" FIREPLACE
- 12" STEP UP IN MEDIA ROOM
- FULL MASTER BAY WINDOW
- EXTENDED COVERED PATIO
- DROP IN TUB & MUD SET SHOWER IN MASTER
- STUDY

FLATWORK/LOT COVERAGE	
STRUCTURAL	
SLAB=	3540 SQ.FT.
COVD. PATIO=	245 SQ.FT.
TOTAL=	3785 SQ.FT.
FLATWORK	
DRIVE=	1125 SQ.FT.
PATIO=	XXX SQ.FT.
A/C PAD=	16 SQ.FT.
IN TURN=	199 SQ.FT.
PUBLIC WALKS=	XXX SQ.FT.
PRIVATE WALKS=	04 SQ.FT.
TOTAL=	1344 SQ.FT.
GRAND TOTAL=	5129 SQ.FT.
LOT=	21,803 SQ.FT.
COVERAGE=	23 %

SOD	
FRONT YARD=	779 SQ.YD.
REAR YARD=	1097 SQ.YD.
R.O.W.=	435 SQ.YD.
TOTAL SOD AREA=	2311 SQ.YD.
FENCE	
FRONT (WING)=	XX LIN. FT.
REAR=	XX LIN. FT.
RIGHT=	XX LIN. FT.
LEFT=	XX LIN. FT.
TOTAL FENCE=	XXX LIN. FT.

traffic Control

*CITY ORDINANCES
 **RESTRICTIVE COVENANTS
 ***BUILDER GUIDELINES
 () RECORD INFORMATION



PLAN OPTIONS:

- STD. BRICK BACK 1st FLOOR
- 42" FIREPLACE
- 12" STEP UP IN MEDIA ROOM
- FULL MASTER BAY WINDOW
- EXTENDED COVERED PATIO
- DROP IN TUB & MUD SET SHOWER IN MASTER
- STUDY

FLATWORK/LOT COVERAGE	
STRUCTURAL SLAB=	3540 SQ.FT.
COVD. PATIO=	245 SQ.FT.
TOTAL=	3785 SQ.FT.
FLATWORK	
DRIVE=	1125 SQ.FT.
PATIO=	XXX SQ.FT.
A/C PAD=	16 SQ.FT.
IN TURN=	199 SQ.FT.
PUBLIC WALKS=	XXX SQ.FT.
PRIVATE WALKS=	04 SQ.FT.
TOTAL=	1344 SQ.FT.
GRAND TOTAL=	5129 SQ.FT.
LOT=	21,803 SQ.FT.
COVERAGE=	23 %

SOB	
FRONT YARD=	779 SQ.YD.
REAR YARD=	1097 SQ.YD.
R.O.W.=	435 SQ.YD.
TOTAL SOB AREA=	2311 SQ.YD.
FENCE	
FRONT (WING)=	XX LIN. FT.
REAR=	XX LIN. FT.
RIGHT=	XX LIN. FT.
LEFT=	XX LIN. FT.
TOTAL FENCE=	XXX LIN. FT.