


REVIEW BY FORT BEND COUNTY COMMISSIONERS COURT

On this 1st day of November, 2016, Commissioners Court came on to be heard and reviewed the accompanying notice of Comcast of Houston, LLC
Job Location 4747 FM 1463, Katy, TX 77494
Date 7/24/2007 Bond No. 104865058, Permit No. 2016-10111 to make use of certain Fort Bend County property subject to, "A Revised Order Regulating the Laying, Construction, Maintenance, and Repair of Buried Cables, Conduits, and Pole Lines, In, Under, Across or Along Roads, Streets, Highways, and Drainage Ditches in Fort Bend County, Texas, Under the Jurisdiction of the Commissioners Court of Fort Bend County, Texas," as passed by the Commissioners Court of Fort Bend County, Texas the 3rd day of August, 1987, recorded in Volume _____ of the Minutes of the Commissioners Court of Fort Bend County, Texas, to the extent that such order is not inconsistent with Article 1436a, Vernon's Texas Civil Statutes. Upon Motion of Commissioner Meyers, seconded by Commissioner Morrison, duly put and carried, it is ORDERED, ADJUDGED AND DECREED that said notice of said above purpose is hereby acknowledged by the Commissioners Court of Fort Bend County, Texas, and that said notice be placed on record according to the regulation order thereof.

Notes:

1. Evidence of review by the Commissioners Court must be kept on the job site and failure to do so constitutes grounds for job shutdown.
2. Written notices are required:
 - a. 48 hours in advance of construction start up, and
 - b. when construction is completed and ready for final inspection
 Mail notices to: Permit Administrator
Fort Bend County Engineering
301 Jackson Street
Richmond, Texas 77469
281-633-7500
3. This permit expires one (1) year from date of permit if construction has not commenced.

By: 
County Engineer

By: N/A
Drainage District Engineer/Manager

Presented to Commissioners Court and approved.
Recorded in Volume 11/1/16 12B
Minutes of Commissioners Court

Clerk of Commissioners Court
By: 
Deputy **RENEE MICHULKA**

County of Fort Bend
Engineering Department

301 Jackson Street
Richmond, Texas 77469

Phone: (281) 633-7500

**Permit Application Review Form For
Cable, Conduit, and Pole Line Activity
In Fort Bend County**

Permit No. 2016-10111

The following "Notice of Proposed Cable, Conduit, and/or Pole Line activity in Fort Bend County" and accompanying attachments have been reviewed and the notice conforms to appropriate regulations set by Commissioner's Court of Fort Bend County, Texas.

(1) Complete Application Form:

a. Name of road, street, and/or drainage ditch affected.

b. Vicinity map showing course of directions

c. Plans and specifications

(2) Bond:

District Attorney, approval when applicable.

Perpetual bond currently posted.

No: 104865058

Amount: \$100,000.00

Performance bond submitted.

No:

Amount:

Cashier's Check

No:

Amount:

(3) Verbal permission given for emergencies, to start construction before approved in Commissioner's Court.

Precinct Engineer Acknowledgment _____
Date

Precinct Commissioner Acknowledgment _____
Date

(4)

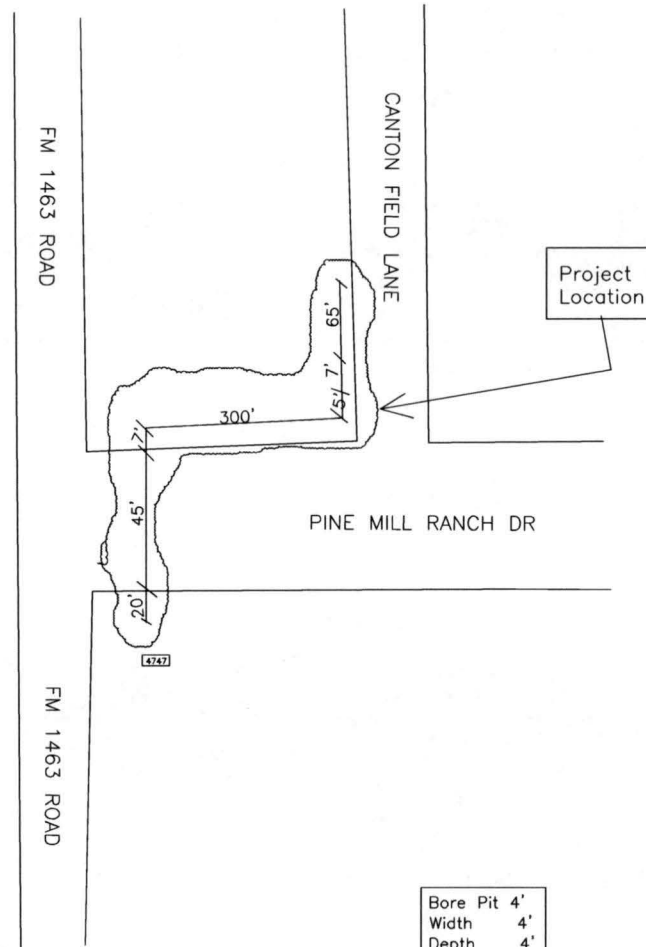
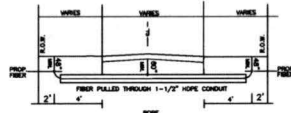
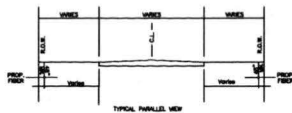
Drainage District Approval when applicable

We have reviewed this project and agree it meets minimum requirements.

C. Monte O. [Signature] 10/25/16
Assistant County Engineer Date



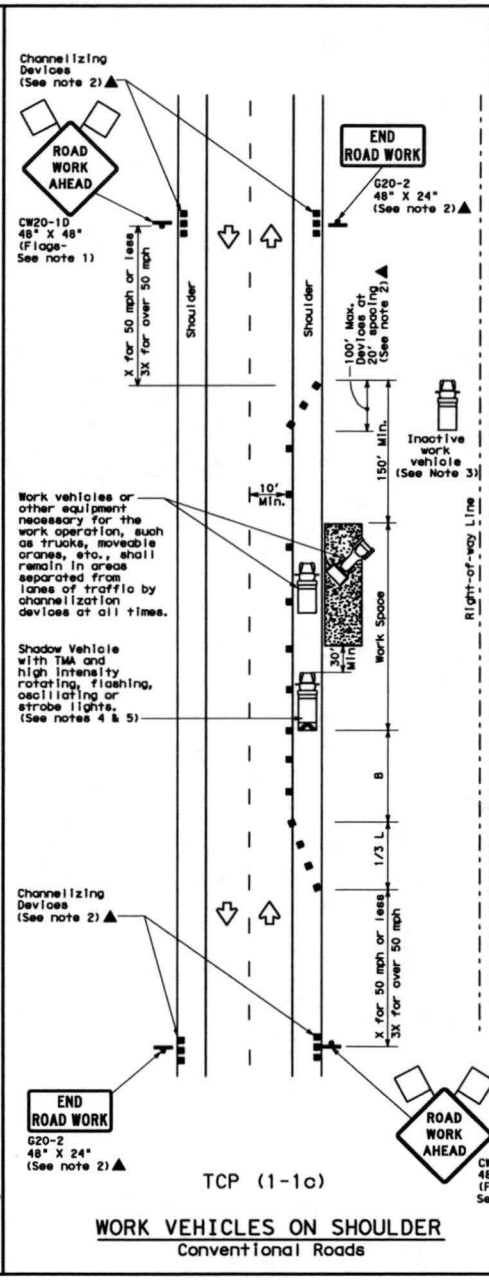
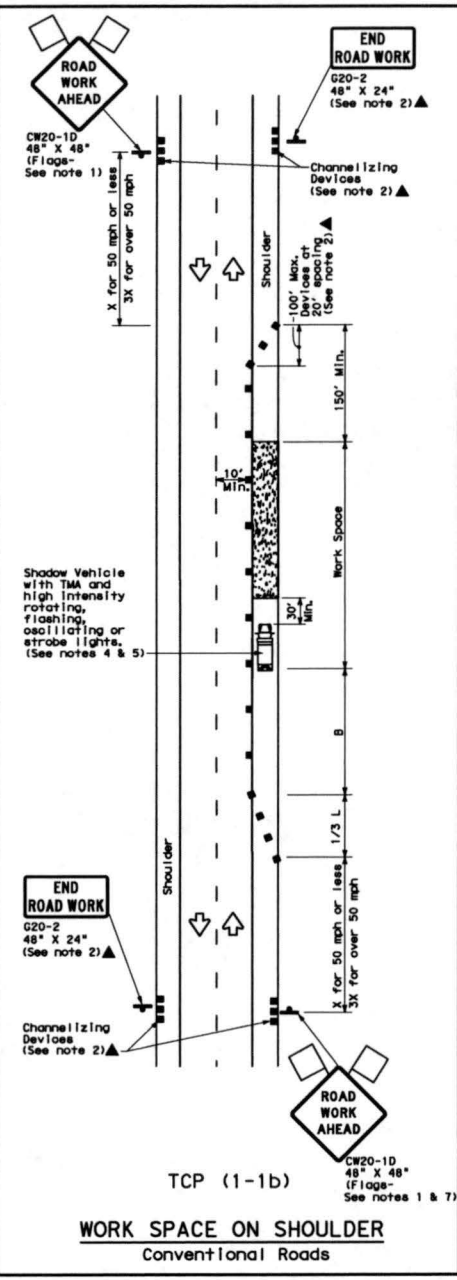
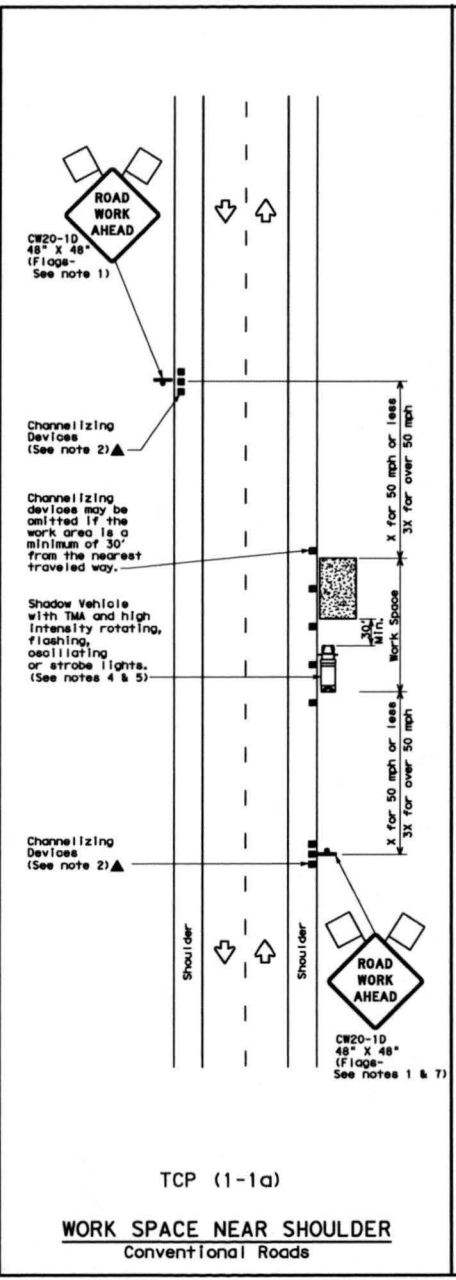
Comcast shall bore 449' Fiber cable crossing Pine Mill Ranch Dr., in 1-1/2" HDPE conduit in Street ROW to a new customer at 4747 FM 1463 Road.



Bore Pit	4'
Width	4'
Depth	4'
Length	4'

DISCLAIMER: The use of this standard is governed by the "Texas Engineering Practice Act". No warranty of any kind is made by TxDOT for any purpose whatsoever. TxDOT assumes no responsibility for the construction of this standard to other formats or for incorrect results or damage resulting from its use.

DATE:
FILE:



LEGEND			
	Type 3 Barricade		Channelizing Devices
	Heavy Work Vehicle		Truck Mounted Attenuator (TMA)
	Trailer Mounted Flashing Arrow Board		Portable Changeable Message Sign (PCMS)
	Sign		Traffic Flow
	Flag		Flagger

Posted Speed #	Formula	Minimum Desirable Taper Lengths #'		Suggested Maximum Spacing of Channelizing Devices		Minimum Sign Spacing #'	Suggested Longitudinal Buffer Spacing #'	
		10' Offset	11' 12' Offset	On a Taper	On a Tangent			
30	L = WS ² / 60	150'	165'	180'	30'	60'	120'	90'
35		205'	225'	245'	35'	70'	160'	120'
40	L = WS	265'	295'	320'	40'	80'	240'	155'
45		450'	495'	540'	45'	90'	320'	195'
50	L = WS	500'	550'	600'	50'	100'	400'	240'
55		550'	605'	660'	55'	110'	500'	295'
60	L = WS	600'	660'	720'	60'	120'	600'	350'
65		650'	715'	780'	65'	130'	700'	410'
70	L = WS	700'	770'	840'	70'	140'	800'	475'
75		750'	825'	900'	75'	150'	900'	540'

* Conventional Roads Only
 ** Taper lengths have been rounded off.
 L=Length of Taper (FT) W=Width of Offset (FT) S=Posted Speed (MPH)

TYPICAL USAGE				
MOBILE	SHORT DURATION	SHORT TERM STATIONARY	INTERMEDIATE TERM STATIONARY	LONG TERM STATIONARY
	✓			

- GENERAL NOTES**
- Flags attached to signs where shown are REQUIRED.
 - All traffic control devices illustrated are REQUIRED, except those denoted with the triangle symbol may be omitted when stored elsewhere in the plans, or for routine maintenance work, when approved by the Engineer.
 - Inactive work vehicles or other equipment should be parked near the right-of-way line and not parked on the paved shoulder.
 - A Shadow Vehicle with a TMA should be used anytime it can be positioned 30 to 100 feet in advance of the area of crew exposure without adversely affecting the performance or quality of the work. If workers are no longer present but road or work conditions require the traffic control to remain in place, Type 3 Barricades or other channelizing devices may be substituted for the Shadow Vehicle and TMA.
 - Additional Shadow Vehicles with TMAs may be positioned off the paved surface, next to those shown in order to protect wider work spaces.
 - See TCP15-1 for shoulder work on divided highways, expressways and freeways.
 - CW21-5 "SHOULDER WORK" signs may be used in place of CW20-10 "ROAD WORK AHEAD" signs for shoulder work on conventional roadways.

For construction or maintenance contract work, specific project requirements for shadow vehicles can be found in the project GENERAL NOTES for Item 502, Barricades, Signs and Traffic Handling.

Texas Department of Transportation
Traffic Operations Division

TRAFFIC CONTROL PLAN
CONVENTIONAL ROAD
SHOULDER WORK

TCP (1-1)-12

REVISIONS				
NO.	DATE	BY	CHKD.	APP.
2-94	1-12			
1-97				
4-98				