

REVIEW BY FORT BEND COUNTY COMMISSIONERS COURT

On this 25th day of October, 2016, Commissioners Court came on to be heard and reviewed the accompanying notice of AT&T
 Job Location Grand Mission Boulevard, Richmond, TX 77407
 Date 3/6/2007 Bond No. CH1-001686693-01, Permit No. 2016-9912 to make use of certain Fort Bend County property subject to, "A Revised Order Regulating the Laying, Construction, Maintenance, and Repair of Buried Cables, Conduits, and Pole Lines, In, Under, Across or Along Roads, Streets, Highways, and Drainage Ditches in Fort Bend County, Texas, Under the Jurisdiction of the Commissioners Court of Fort Bend County, Texas," as passed by the Commissioners Court of Fort Bend County, Texas the 3rd day of August, 1987, recorded in Volume _____ of the Minutes of the Commissioners Court of Fort Bend County, Texas, to the extent that such order is not inconsistent with Article 1436a, Vernon's Texas Civil Statutes. Upon Motion of Commissioner Meyers, seconded by Commissioner Probst, duly put and carried, it is ORDERED, ADJUDGED AND DECREED that said notice of said above purpose is hereby acknowledged by the Commissioners Court of Fort Bend County, Texas, and that said notice be placed on record according to the regulation order thereof.

Notes:

1. Evidence of review by the Commissioners Court must be kept on the job site and failure to do so constitutes grounds for job shutdown.
2. Written notices are required:
 - a. 48 hours in advance of construction start up, and
 - b. when construction is completed and ready for final inspection
 Mail notices to: Permit Administrator
 Fort Bend County Engineering
 301 Jackson Street
 Richmond, Texas 77469
 281-633-7500
3. This permit expires one (1) year from date of permit if construction has not commenced.

By: _____

for Charles O. [Signature]
 County Engineer

Presented to Commissioners Court and approved.

Recorded in Volume 10-25-16 14H
 Minutes of Commissioners Court

By: _____

N/A

Drainage District Engineer/Manager

Clerk of Commissioners Court

By: _____

[Signature]
 Deputy

County of Fort Bend
Engineering Department

301 Jackson Street
Richmond, Texas 77469

Phone: (281) 633-7500

**Permit Application Review Form For
Cable, Conduit, and Pole Line Activity
In Fort Bend County**

Permit No. 2016-9912

The following "Notice of Proposed Cable, Conduit, and/or Pole Line activity in Fort Bend County" and accompanying attachments have been reviewed and the notice conforms to appropriate regulations set by Commissioner's Court of Fort Bend County, Texas.

- (1) Complete Application Form:
 - a. Name of road, street, and/or drainage ditch affected.
 - b. Vicinity map showing course of directions
 - c. Plans and specifications
- (2) Bond:
 - District Attorney, approval when applicable.
 - Perpetual bond currently posted.
 - No: CH1-001686693-01
 - Amount: \$25,000.00
 - Performance bond submitted.
 - No:
Amount:
Cashier's Check
 - No:
Amount:

(3) Verbal permission given for emergencies, to start construction before approved in Commissioner's Court.


Precinct Engineer Acknowledgment _____
Date

Precinct Commissioner Acknowledgment _____
Date

(4)

Drainage District Approval when applicable

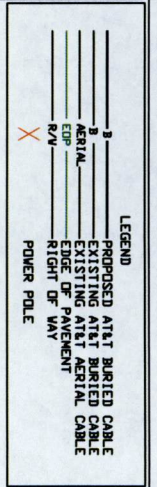
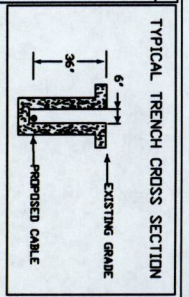
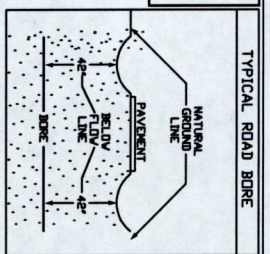
We have reviewed this project and agree it meets minimum requirements.



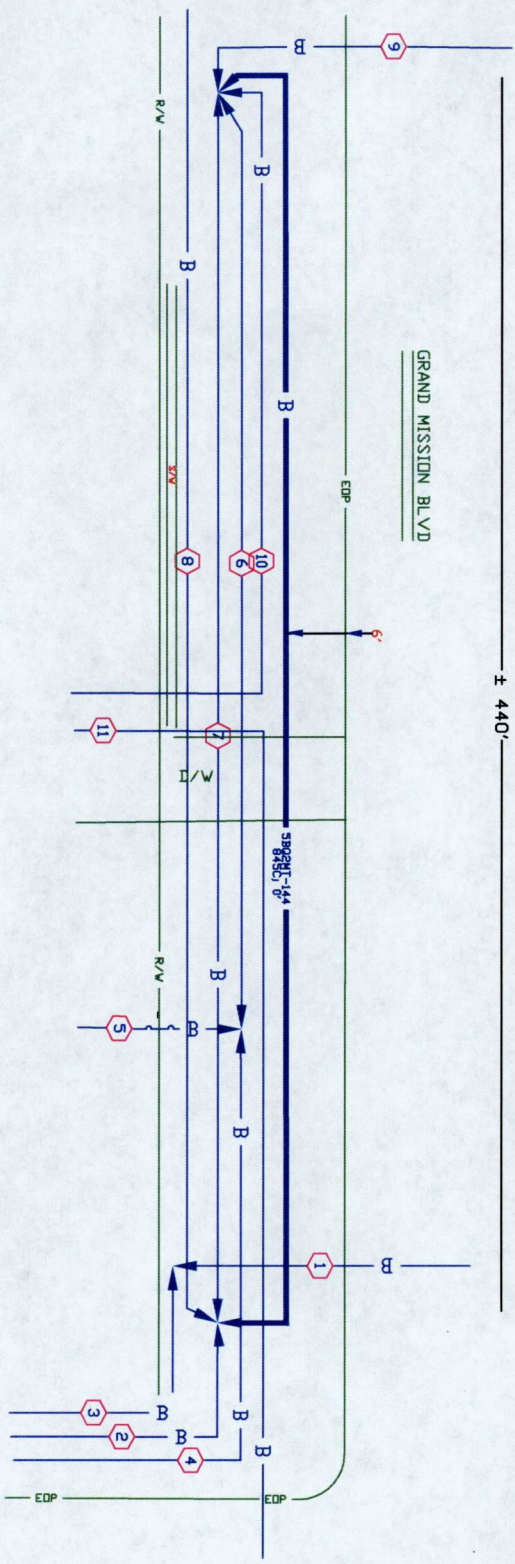
Assistant County Engineer

10/17/16
Date

AT&T CONTACT
 MIKE JONES
 MGR.-DSP PLNG & ENG DESIGN
 281-341-4130



FT BEND COUNTY



- 1 CABLE 45M/130'
- 2 CABLE 45M/130'
- 3 CABLE 45M/130'
- 4 CABLE 45M/130'
- 5 CABLE 45M/130'
- 6 CABLE 45M/130'
- 7 CABLE 845M/510'
- 8 CABLE 845M/510'
- 9 CABLE 845M/270', 2008
- 10 CABLE 845M/560'
- 11 CABLE 45M/130'

CONTRACTORS:
 THE STATE OF TEXAS, DEPARTMENT OF TRANSPORTATION
 1301 EAST EXHIBIT DRIVE, AUSTIN, TEXAS 78761
 512-261-2000
 FOR MORE INFORMATION, CONTACT THE STATE OF TEXAS, DEPARTMENT OF TRANSPORTATION, 1301 EAST EXHIBIT DRIVE, AUSTIN, TEXAS 78761, 512-261-2000
 EDP NON-CALL 1 800 541-0003

Not for use or disclosure outside the AT&T companies except under written agreement.

SPECIAL CIRCUITS N
 6203 FORWARDED N
 PERMIT REQUIRED Y

OPERATING RANGE OF JOB STEPS
 TASK _____ TO _____
 MFRS REQ

TRANSMISSION ZONE
 RZ 0 CZ 0 TAPER CODE 1558FT
 CAUTION HIGH VOLTAGE BURIED Y
 KY 7.20 AERIAL Y

UTILITY CO CENT - CENTER POINT
 REP NAME
 REP TEL NO.
 POLE CONTACTS (+) 0 (-) 0

UTILITY CO
 REP NAME
 REP TEL NO.
 POLE CONTACTS (+) 0 (-) 0

UTILITY CO
 REP NAME
 REP TEL NO.
 POLE CONTACTS (+) 0 (-) 0

PROJECT NO A00067P

TOT PRINTS 13 PRINT NO. 12
 NPA/NNX: 281-232 PRT: 281232
 EXCH. R10H-H05E

TAX DIST. F0004
 GEO LOC. W9222
 ENGR. NJ DRAWN JM
 TELEPHONE NO. (281) 341-4130

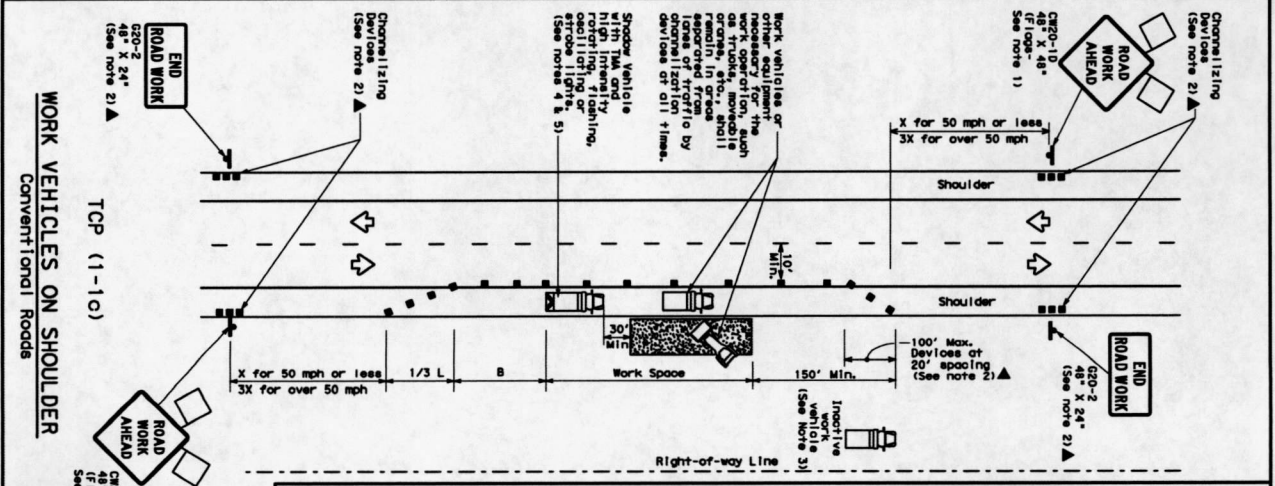
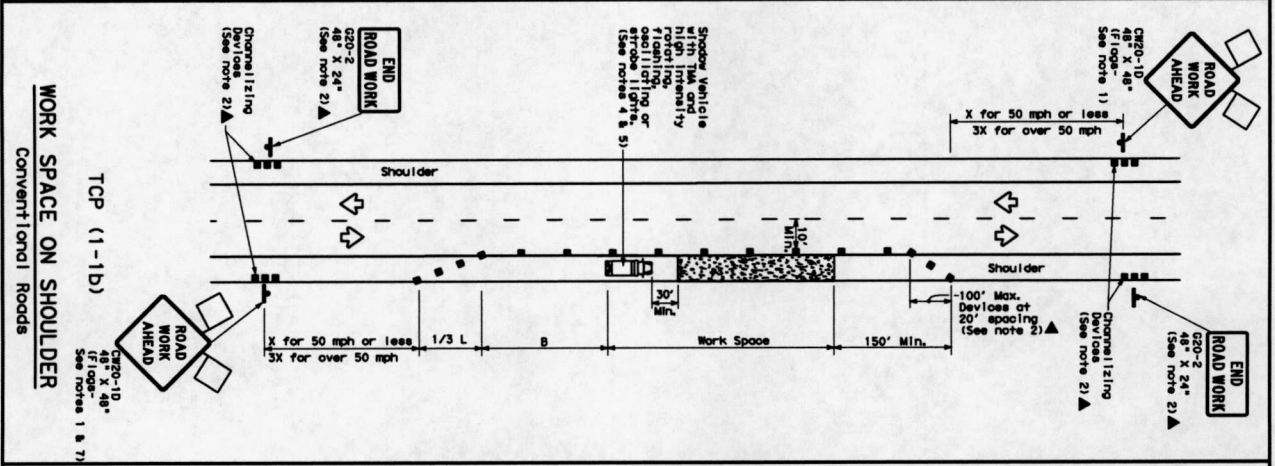
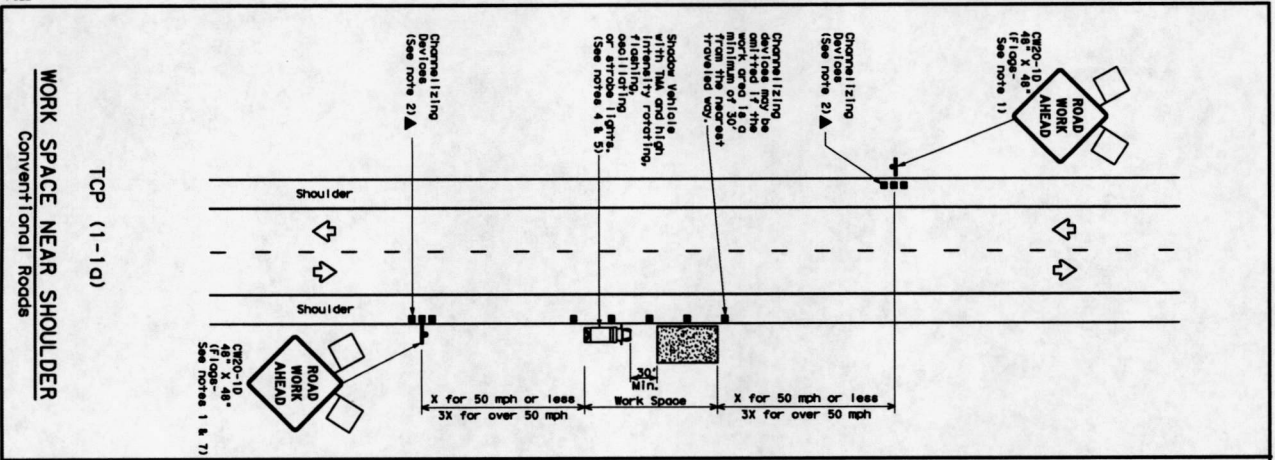
REC. REF.
 MAP REF.
 SCALE NONE

ISSUE DATE
 PROJ TITLE THARR PPT 1558FT
 REV. NUMBER
 DATE REV.

CAUTION!
 Unsanitized optical construction and active fibers may emit laser radiation. DO NOT VIEW END OF FIBER OR FIBER END OF CONNECTOR WITH UNPROTECTED EYE!
 CAUTION!
 Request that all laser sources be disconnected from cable to be worked on with infrared scopes to assure systems are inactive before splicing.
 BENDING RADIUS IS 5"
 Use Airis Splice Configuration.
 Fusion Splicing to be done in accordance with instructions.

DISCLAIMER: The use of this standard is governed by the "Texas Engineering Practice Act". No warranty of any kind is made by TxDOT for any purpose whatsoever. TxDOT assumes no responsibility for the conversion of this standard to other formats or for incorrect results or damages resulting from its use.

DATE: FILE:



TRAFFIC CONTROL PLAN
CONVENTIONAL ROAD
SHOULDER WORK

TCP (1-1)-12

© TxDOT December 1985

DATE	REVISION	BY	CHK	DATE
1-18	1-18	1-18	1-18	1-18

LEGEND

	Type 3 Barricade		Channelizing Device
	Heavy Work Vehicle		Traffic Barricade
	Trailer Mounted Flashing Arrow Board		Portable Channelized Message Sign (PCMS)
	Sign		Traffic Flow
	Flag		Flagpole

GENERAL NOTES

1. Flag attached to a sign where shown are required.
2. Dimensions shown are minimum. Signs should be placed in the plan, or for routine maintenance work, when approved by the Engineer.
3. Inertive work vehicle or other equipment should be parked near the work space.
4. Shadow vehicle with TMA and high intensity flashing strobe lights should be positioned 30 to 100 feet in advance of the work space without adversely affecting the performance or quality of the work. If workers are no longer present but road or work conditions require the traffic control to remain in place, Type 3 Barricade or other channelizing device should be used.
5. Additional Shadow Vehicles with TMA may be positioned off the paved surface, next to those shown in order to prevent wider work spaces.
6. See TCD-5-11 for shoulder work on divided highways, expressway and freeways.
7. Temporary "SIGNALS" work" signs may be used in place of C20-10 "ROAD WORK AHEAD" signs for shoulder work on conventional roadways.

TYPICAL USAGE

MOBILE	SHORT DURATION	SHORT TERM STATIONARY	INTERMEDIATE TERM STATIONARY	LONG TERM STATIONARY
30	150'	165'	180'	30'
35	205'	225'	245'	35'
40	255'	285'	305'	40'
45	305'	335'	355'	45'
50	355'	385'	405'	50'
55	405'	435'	455'	55'
60	455'	485'	505'	60'
65	505'	535'	555'	65'
70	555'	585'	605'	70'
75	605'	635'	655'	75'

* Conventional Roads Only
** Taper lengths have been rounded off.
L=Length of Taper (FT) w/width of Offset (FT) S=Shoulder Speed (MPH)

DATE: FILE: