

REVIEW BY FORT BEND COUNTY COMMISSIONERS COURT

On this 25th day of October, 2016, Commissioners Court came on to be heard and reviewed the accompanying notice of Mohle Crawford Design/Build Inc
 Job Location 1661 Blaisdale Road, Richmond, TX 77406
 Date Bond No. 418380, Permit No. 2016-9429 to make use of certain Fort Bend County property subject to, "A Revised Order Regulating the Laying, Construction, Maintenance, and Repair of Buried Cables, Conduits, and Pole Lines, In, Under, Across or Along Roads, Streets, Highways, and Drainage Ditches in Fort Bend County, Texas, Under the Jurisdiction of the Commissioners Court of Fort Bend County, Texas," as passed by the Commissioners Court of Fort Bend County, Texas the 3rd day of August, 1987, recorded in Volume _____ of the Minutes of the Commissioners Court of Fort Bend County, Texas, to the extent that such order is not inconsistent with Article 1436a, Vernon's Texas Civil Statutes. Upon Motion of Commissioner T. Meyers, seconded by Commissioner Prestage, duly put and carried, it is ORDERED, ADJUDGED AND DECREED that said notice of said above purpose is hereby acknowledged by the Commissioners Court of Fort Bend County, Texas, and that said notice be placed on record according to the regulation order thereof.

Notes:

1. Evidence of review by the Commissioners Court must be kept on the job site and failure to do so constitutes grounds for job shutdown.
2. Written notices are required:
 - a. 48 hours in advance of construction start up, and
 - b. when construction is completed and ready for final inspection
 Mail notices to: Permit Administrator
 Fort Bend County Engineering
 301 Jackson Street
 Richmond, Texas 77469
 281-633-7500
3. This permit expires one (1) year from date of permit if construction has not commenced.

By: C. Amanda O. [Signature]
 County Engineer

Presented to Commissioners Court and approved.
 Recorded in Volume 10-25-16 14C
 Minutes of Commissioners Court

By: N/A
 Drainage District Engineer/Manager

Clerk of Commissioners Court
 By: [Signature]
 Deputy

THIS DOCUMENT CONTAINS A TRUE WATERMARK - HOLD TO LIGHT TO VIEW

AmegyBank
of Texas

AMEGY BANK, a division of ZB, N.A.
PO BOX 27459 HOUSTON, TEXAS 77227-7459

PURCHASER: Mohle Crawford Design/Build Inc

CASHIER'S CHECK

No. 418380

35-1125/1130

Notice to Purchaser: As a condition to this Institution's issuance of this check, Purchaser agrees to provide an Indemnity Bond prior to the refund or replacement of this check in the event it is lost, misplaced, or stolen.

Void if over \$5,000.00

DATE 9/12/2016
AMOUNT \$5,000.00



Five Thousand Dollars and Zero Cents

PAY TO THE ORDER OF
Ft. Bend County

CHECKS OVER \$25,000.00 MUST HAVE 2 SIGNATURES

Kay Yeager
AUTHORIZED SIGNATURE



Security Features Included. Details on Back

DATE	10.26.16	
CURRENCY	DOLLARS	CENTS
COINS		
TOTAL CASH		
CHECKS	5000	
1	Expire's	
2	Check	
3	# 418380	
4		
5		
6		
7	Mobile	
8	Crashford	
9	Design Build	
10	Art	
11	Receipt #	
12	2016-9429	
13		
14	CCM 1025-16	
15	# 142	
16		
17		
18		
19		
20		
21		
22		
23		
24		
25		
26		
27		
28		
TOTAL FROM OTHER SIDE OR ATTACHED LIST		
TOTAL	5000	

DEPOSIT TICKET
TOTAL ITEMS: 1
DEPOSITS MAY NOT BE AVAILABLE FOR IMMEDIATE WITHDRAWAL.
88-2285/1131-111
RE-ENTER GRAND TOTAL IN SCREENED BOXES

FORT BEND COUNTY CLERK
REGISTRY FUND
301 JACKSON
RICHMOND, TX 77469

PROSPERITY BANK*
SUGAR LAND BANKING CENTER
14000 SOUTHWEST FRESHWAY • SUGAR LAND, TX 77478
281-269-7200 www.prosperitybankusa.com

\$ 5000.00

151

USE ROUTING NUMBER FROM YOUR CHECKS FOR AUTOMATIC DEBITING. ① 0-50:AM:1:LINE:ITD:1:AME:ROSE:1:CC:1:03:7971 SUBJECT TO THE PROVISIONS OF THE UNIFORM CREDIT CARD ACT AND ANY APPLICABLE COLLECTION/CHARGE-LIT.

RECORD OF CHECKS FOR DEPOSIT

CHECKS LIST EACH SEPARATELY	DOLLARS	CENTS
1		
2		
3		
4		
5		
6		
7		
8		
9		
10		
11		
12		
13		
14		
15		
16		
17		
18		
19		
20		
21		
22		
23		
24		
25		
26		
27		
28		
29		
30		
TOTAL THIS SIDE	5000	
TOTAL FROM OTHER SIDE		
TOTAL	5000	

ENTER IN THE TOTAL IN THE SPACE PROVIDED: TOTAL \$ 5000.00

CASH COUNT - FOR OFFICE USE

100
50
20
10
5
2
1

10/26/2016
BRN 111 T1-A 3
Account 1
DDA Deposit 5,000.00

3:09 PM
Seq 11

Prosperity Bank

PRINT



Order Confirmation

Fort Bend County, Office of County Clerk

301 Jackson Street
Richmond, TX 77469
U.S.A.

TXCLASS

Order Date: 11/2/2016 Order Number: TXO01380080
Participant Name: Fort Bend County, Office of County Clerk
Account Name: CCM2016-9429 Mohle
Crawford
Account Number: TXCLASS Authorized Linda Willis

Transaction Type: Contribution
Transaction Amount: \$5,000.00

Bank Name: PROSPERITY BANK
Bank Account No: XXXXXXXX-7036
Payment Type: ACH *Please note you have made an ACH Contribution, these funds
will not be available for withdrawal until the following business
day.*
ABA:

Payment Instructions:

Memo:

Email: clientservices@texasclass.com Tel: (800) 707-6242 Fax: (855) 848-9910 www.texasclass.com

DEPOSIT

PERMIT #	2016-9429
STYLE:	Mohle Crawford Design/Build Inc
NAME PUT INTO TEXAS CLASS AS:	CCM2016-9429 Mohle
TEXAS CLASS ACCOUNT NUMBER	
DEPOSIT AMOUNT:	\$5,000.00
DATE RECEIVED:	10/26/2016
DATE TRANSFERRED TO TEXAS CLASS:	11/2/2016

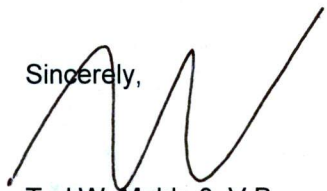
September 1, 2016

RE: 1661 Blaisdale Road
Richmond, TX 77406
APP-921

Fort Bend County:

We have called the West Ford Bend Management District on 09/01/16. They stated they are only handling the plumbing. They will be working with subcontractors Ramco and Available Plumbing on the inside and outside plumbing.

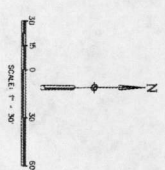
Sincerely,



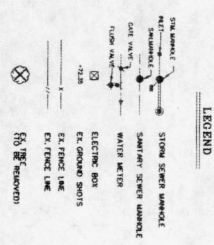
Ted W. Mohle 3, V.P.
mohlecrawford/designbuildinginc
tw@mohleddesign.com

cc: Steve L. Crawford, Pres.
mohlecrawford/designbuildinginc
scrawford1254@mac.com

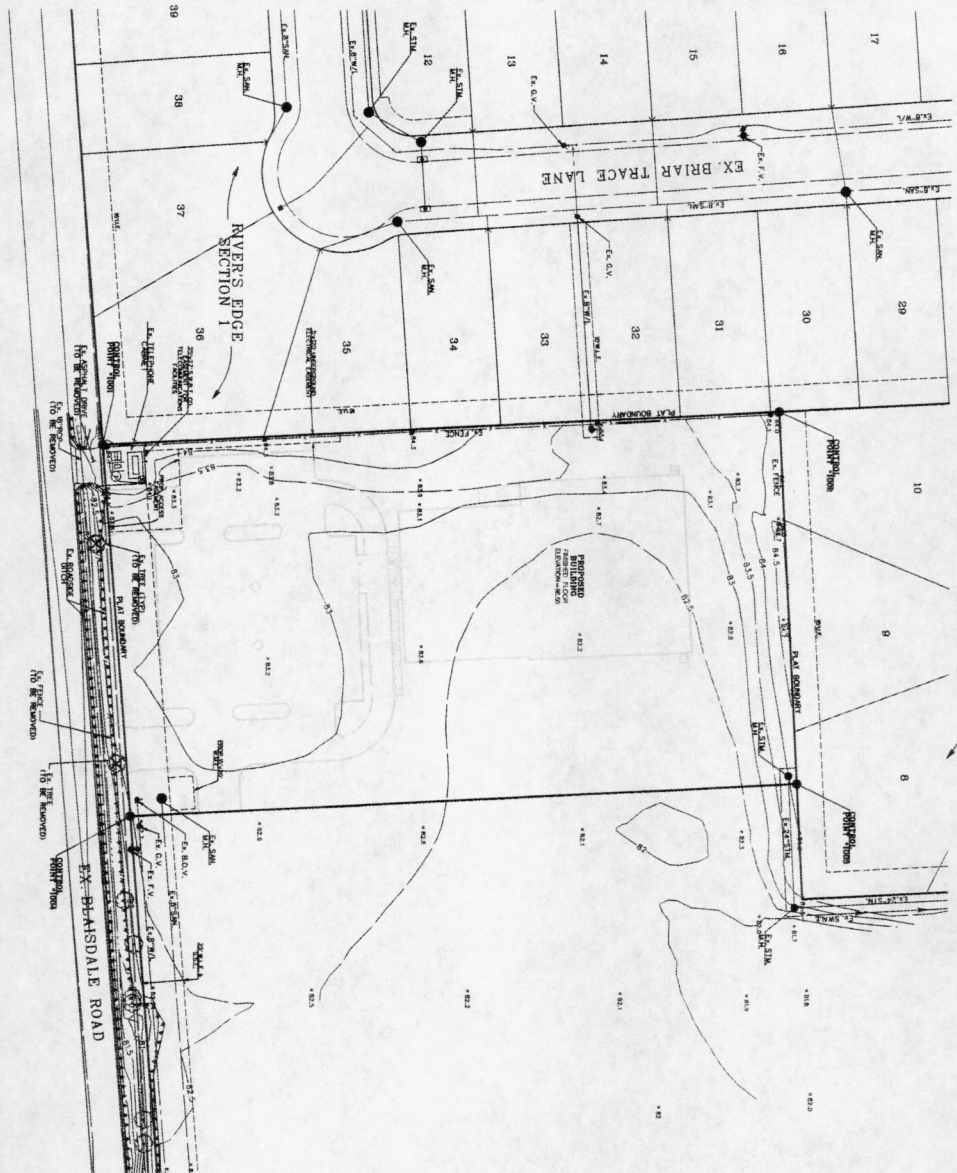
NATIONAL ENGINEERING SURVEY NUMBER M020 12 (110 AMP471)
 ELEVATION = 591.10 BARRIS
 PROJECT FILE # 24 410 01234 THE GYMNASIUM RICHMOND TEXAS
 PROJECT FILE # 24 410 01234 THE GYMNASIUM RICHMOND TEXAS
 PROJECT FILE # 24 410 01234 THE GYMNASIUM RICHMOND TEXAS



NO.	DESCRIPTION	DATE
1	ISSUED FOR PERMITS	08/28/13
2	ISSUED FOR PERMITS	08/28/13
3	ISSUED FOR PERMITS	08/28/13
4	ISSUED FOR PERMITS	08/28/13



CONSTRUCTION NOTES
 1. THE CONTRACTOR SHALL BE RESPONSIBLE FOR OBTAINING ALL NECESSARY PERMITS FROM THE LOCAL AUTHORITIES.
 2. THE CONTRACTOR SHALL BE RESPONSIBLE FOR OBTAINING ALL NECESSARY PERMITS FROM THE LOCAL AUTHORITIES.
 3. THE CONTRACTOR SHALL BE RESPONSIBLE FOR OBTAINING ALL NECESSARY PERMITS FROM THE LOCAL AUTHORITIES.
 4. THE CONTRACTOR SHALL BE RESPONSIBLE FOR OBTAINING ALL NECESSARY PERMITS FROM THE LOCAL AUTHORITIES.



APPROVED: *[Signature]*
 DATE: 11/11/13

MOHTE
CRAWFORD

GYMNASTICS BUILDING

RICHMOND TEXAS

PROJECT NUMBER: 09 21065.00
 DRAWING ISSUE SCHEDULE
 NO. 0000000000 DATE:

C1.2

TOPOGRAPHIC LAYOUT

NOTICE: THE INFORMATION CONTAINED HEREIN IS UNCLASSIFIED EXCEPT WHERE SHOWN OTHERWISE. DATE 08/11/2010 BY 60322 UCBAW/BJS/STP

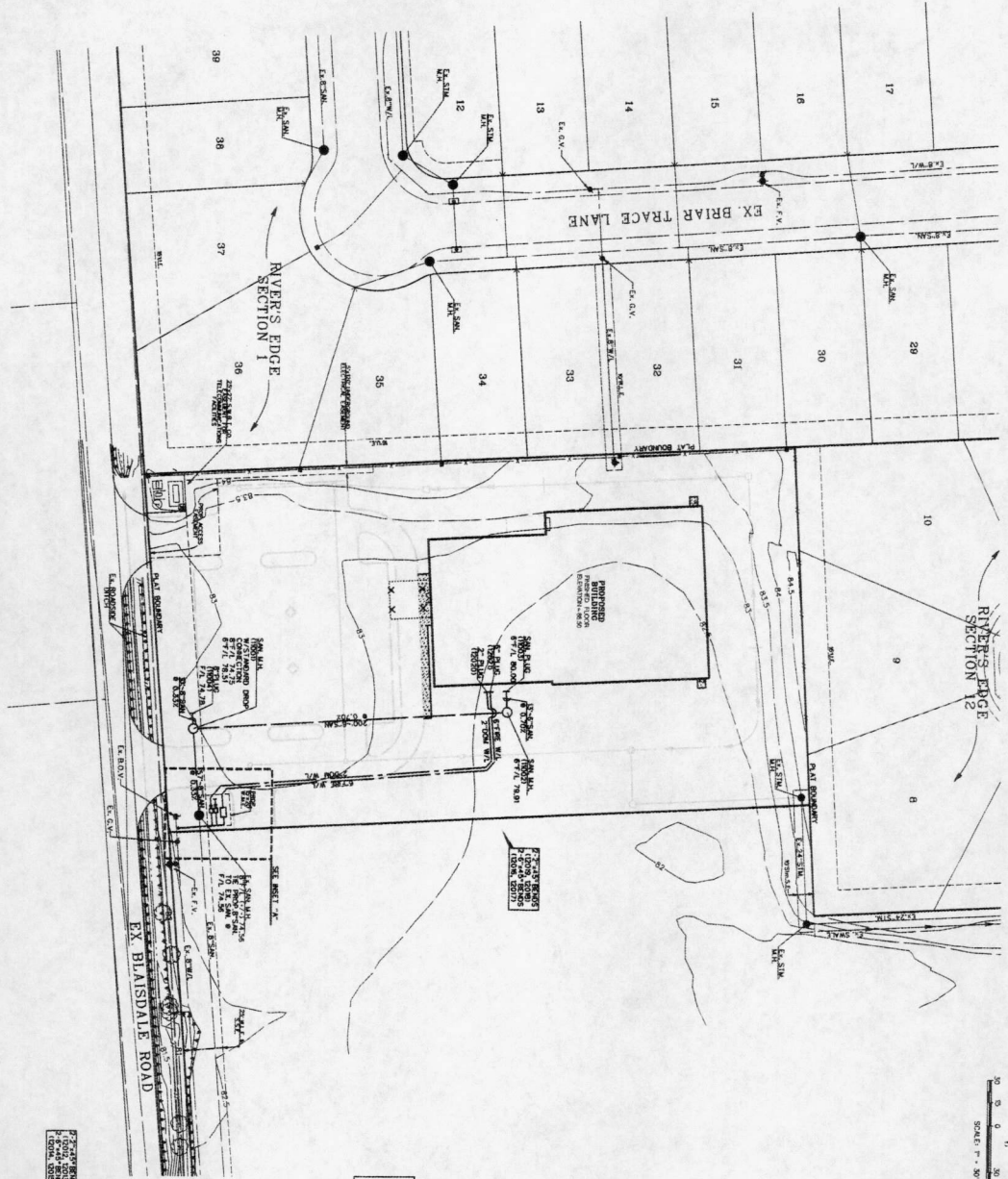
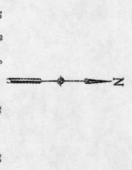
CRAWFORD
GYMNASTICS BUILDING
 TEXAS

RICHMOND
 TEXAS

PROJECT NUMBER: DB 210601.00

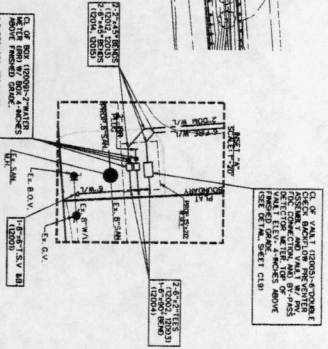
DRAWING ISSUE SCHEDULE

NO. DESCRIPTION DATE



- LEGEND**
- PROP. STORM SEWER
 - PROP. SANITARY SEWER
 - PROP. WATER LINE
 - EXIST. STORM SEWER
 - EXIST. SANITARY SEWER
 - EXIST. WATER LINE

- NOTE**
1. CONTRACTOR SHALL TIE TO EXISTING SANITARY MANHOLE
 2. REFERENCED MANHOLE NUMBERS FOR EXIST. UTILITY LOCATIONS
 3. TYPICAL WATERLINE FLOWING - 4.0 FEET BELOW PROPOSED

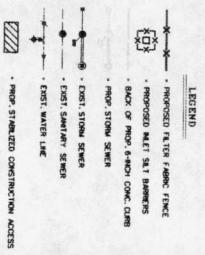
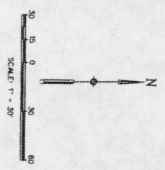


CL. OF FIN. 10000'-0" (2000')
 1. 2" DIA. STORM SEWER
 2. 4" DIA. STORM SEWER
 3. 6" DIA. STORM SEWER
 4. 8" DIA. STORM SEWER
 5. 10" DIA. STORM SEWER
 6. 12" DIA. STORM SEWER
 7. 15" DIA. STORM SEWER
 8. 18" DIA. STORM SEWER
 9. 21" DIA. STORM SEWER
 10. 24" DIA. STORM SEWER
 11. 30" DIA. STORM SEWER
 12. 36" DIA. STORM SEWER
 13. 42" DIA. STORM SEWER
 14. 48" DIA. STORM SEWER
 15. 54" DIA. STORM SEWER
 16. 60" DIA. STORM SEWER
 17. 72" DIA. STORM SEWER
 18. 84" DIA. STORM SEWER
 19. 96" DIA. STORM SEWER
 20. 108" DIA. STORM SEWER
 21. 120" DIA. STORM SEWER
 22. 144" DIA. STORM SEWER
 23. 168" DIA. STORM SEWER
 24. 192" DIA. STORM SEWER
 25. 216" DIA. STORM SEWER
 26. 240" DIA. STORM SEWER
 27. 270" DIA. STORM SEWER
 28. 300" DIA. STORM SEWER
 29. 324" DIA. STORM SEWER
 30. 360" DIA. STORM SEWER
 31. 408" DIA. STORM SEWER
 32. 456" DIA. STORM SEWER
 33. 504" DIA. STORM SEWER
 34. 540" DIA. STORM SEWER
 35. 576" DIA. STORM SEWER
 36. 612" DIA. STORM SEWER
 37. 648" DIA. STORM SEWER
 38. 684" DIA. STORM SEWER
 39. 720" DIA. STORM SEWER
 40. 756" DIA. STORM SEWER
 41. 792" DIA. STORM SEWER
 42. 828" DIA. STORM SEWER
 43. 864" DIA. STORM SEWER
 44. 900" DIA. STORM SEWER
 45. 936" DIA. STORM SEWER
 46. 972" DIA. STORM SEWER
 47. 1008" DIA. STORM SEWER
 48. 1044" DIA. STORM SEWER
 49. 1080" DIA. STORM SEWER
 50. 1116" DIA. STORM SEWER
 51. 1152" DIA. STORM SEWER
 52. 1188" DIA. STORM SEWER
 53. 1224" DIA. STORM SEWER
 54. 1260" DIA. STORM SEWER
 55. 1296" DIA. STORM SEWER
 56. 1332" DIA. STORM SEWER
 57. 1368" DIA. STORM SEWER
 58. 1404" DIA. STORM SEWER
 59. 1440" DIA. STORM SEWER
 60. 1476" DIA. STORM SEWER
 61. 1512" DIA. STORM SEWER
 62. 1548" DIA. STORM SEWER
 63. 1584" DIA. STORM SEWER
 64. 1620" DIA. STORM SEWER
 65. 1656" DIA. STORM SEWER
 66. 1692" DIA. STORM SEWER
 67. 1728" DIA. STORM SEWER
 68. 1764" DIA. STORM SEWER
 69. 1800" DIA. STORM SEWER
 70. 1836" DIA. STORM SEWER
 71. 1872" DIA. STORM SEWER
 72. 1908" DIA. STORM SEWER
 73. 1944" DIA. STORM SEWER
 74. 1980" DIA. STORM SEWER
 75. 2016" DIA. STORM SEWER
 76. 2052" DIA. STORM SEWER
 77. 2088" DIA. STORM SEWER
 78. 2124" DIA. STORM SEWER
 79. 2160" DIA. STORM SEWER
 80. 2196" DIA. STORM SEWER
 81. 2232" DIA. STORM SEWER
 82. 2268" DIA. STORM SEWER
 83. 2304" DIA. STORM SEWER
 84. 2340" DIA. STORM SEWER
 85. 2376" DIA. STORM SEWER
 86. 2412" DIA. STORM SEWER
 87. 2448" DIA. STORM SEWER
 88. 2484" DIA. STORM SEWER
 89. 2520" DIA. STORM SEWER
 90. 2556" DIA. STORM SEWER
 91. 2592" DIA. STORM SEWER
 92. 2628" DIA. STORM SEWER
 93. 2664" DIA. STORM SEWER
 94. 2700" DIA. STORM SEWER
 95. 2736" DIA. STORM SEWER
 96. 2772" DIA. STORM SEWER
 97. 2808" DIA. STORM SEWER
 98. 2844" DIA. STORM SEWER
 99. 2880" DIA. STORM SEWER
 100. 2916" DIA. STORM SEWER
 101. 2952" DIA. STORM SEWER
 102. 2988" DIA. STORM SEWER
 103. 3024" DIA. STORM SEWER
 104. 3060" DIA. STORM SEWER
 105. 3096" DIA. STORM SEWER
 106. 3132" DIA. STORM SEWER
 107. 3168" DIA. STORM SEWER
 108. 3204" DIA. STORM SEWER
 109. 3240" DIA. STORM SEWER
 110. 3276" DIA. STORM SEWER
 111. 3312" DIA. STORM SEWER
 112. 3348" DIA. STORM SEWER
 113. 3384" DIA. STORM SEWER
 114. 3420" DIA. STORM SEWER
 115. 3456" DIA. STORM SEWER
 116. 3492" DIA. STORM SEWER
 117. 3528" DIA. STORM SEWER
 118. 3564" DIA. STORM SEWER
 119. 3600" DIA. STORM SEWER
 120. 3636" DIA. STORM SEWER
 121. 3672" DIA. STORM SEWER
 122. 3708" DIA. STORM SEWER
 123. 3744" DIA. STORM SEWER
 124. 3780" DIA. STORM SEWER
 125. 3816" DIA. STORM SEWER
 126. 3852" DIA. STORM SEWER
 127. 3888" DIA. STORM SEWER
 128. 3924" DIA. STORM SEWER
 129. 3960" DIA. STORM SEWER
 130. 3996" DIA. STORM SEWER
 131. 4032" DIA. STORM SEWER
 132. 4068" DIA. STORM SEWER
 133. 4104" DIA. STORM SEWER
 134. 4140" DIA. STORM SEWER
 135. 4176" DIA. STORM SEWER
 136. 4212" DIA. STORM SEWER
 137. 4248" DIA. STORM SEWER
 138. 4284" DIA. STORM SEWER
 139. 4320" DIA. STORM SEWER
 140. 4356" DIA. STORM SEWER
 141. 4392" DIA. STORM SEWER
 142. 4428" DIA. STORM SEWER
 143. 4464" DIA. STORM SEWER
 144. 4500" DIA. STORM SEWER
 145. 4536" DIA. STORM SEWER
 146. 4572" DIA. STORM SEWER
 147. 4608" DIA. STORM SEWER
 148. 4644" DIA. STORM SEWER
 149. 4680" DIA. STORM SEWER
 150. 4716" DIA. STORM SEWER
 151. 4752" DIA. STORM SEWER
 152. 4788" DIA. STORM SEWER
 153. 4824" DIA. STORM SEWER
 154. 4860" DIA. STORM SEWER
 155. 4896" DIA. STORM SEWER
 156. 4932" DIA. STORM SEWER
 157. 4968" DIA. STORM SEWER
 158. 5004" DIA. STORM SEWER
 159. 5040" DIA. STORM SEWER
 160. 5076" DIA. STORM SEWER
 161. 5112" DIA. STORM SEWER
 162. 5148" DIA. STORM SEWER
 163. 5184" DIA. STORM SEWER
 164. 5220" DIA. STORM SEWER
 165. 5256" DIA. STORM SEWER
 166. 5292" DIA. STORM SEWER
 167. 5328" DIA. STORM SEWER
 168. 5364" DIA. STORM SEWER
 169. 5400" DIA. STORM SEWER
 170. 5436" DIA. STORM SEWER
 171. 5472" DIA. STORM SEWER
 172. 5508" DIA. STORM SEWER
 173. 5544" DIA. STORM SEWER
 174. 5580" DIA. STORM SEWER
 175. 5616" DIA. STORM SEWER
 176. 5652" DIA. STORM SEWER
 177. 5688" DIA. STORM SEWER
 178. 5724" DIA. STORM SEWER
 179. 5760" DIA. STORM SEWER
 180. 5796" DIA. STORM SEWER
 181. 5832" DIA. STORM SEWER
 182. 5868" DIA. STORM SEWER
 183. 5904" DIA. STORM SEWER
 184. 5940" DIA. STORM SEWER
 185. 5976" DIA. STORM SEWER
 186. 6012" DIA. STORM SEWER
 187. 6048" DIA. STORM SEWER
 188. 6084" DIA. STORM SEWER
 189. 6120" DIA. STORM SEWER
 190. 6156" DIA. STORM SEWER
 191. 6192" DIA. STORM SEWER
 192. 6228" DIA. STORM SEWER
 193. 6264" DIA. STORM SEWER
 194. 6300" DIA. STORM SEWER
 195. 6336" DIA. STORM SEWER
 196. 6372" DIA. STORM SEWER
 197. 6408" DIA. STORM SEWER
 198. 6444" DIA. STORM SEWER
 199. 6480" DIA. STORM SEWER
 200. 6516" DIA. STORM SEWER
 201. 6552" DIA. STORM SEWER
 202. 6588" DIA. STORM SEWER
 203. 6624" DIA. STORM SEWER
 204. 6660" DIA. STORM SEWER
 205. 6696" DIA. STORM SEWER
 206. 6732" DIA. STORM SEWER
 207. 6768" DIA. STORM SEWER
 208. 6804" DIA. STORM SEWER
 209. 6840" DIA. STORM SEWER
 210. 6876" DIA. STORM SEWER
 211. 6912" DIA. STORM SEWER
 212. 6948" DIA. STORM SEWER
 213. 6984" DIA. STORM SEWER
 214. 7020" DIA. STORM SEWER
 215. 7056" DIA. STORM SEWER
 216. 7092" DIA. STORM SEWER
 217. 7128" DIA. STORM SEWER
 218. 7164" DIA. STORM SEWER
 219. 7200" DIA. STORM SEWER
 220. 7236" DIA. STORM SEWER
 221. 7272" DIA. STORM SEWER
 222. 7308" DIA. STORM SEWER
 223. 7344" DIA. STORM SEWER
 224. 7380" DIA. STORM SEWER
 225. 7416" DIA. STORM SEWER
 226. 7452" DIA. STORM SEWER
 227. 7488" DIA. STORM SEWER
 228. 7524" DIA. STORM SEWER
 229. 7560" DIA. STORM SEWER
 230. 7596" DIA. STORM SEWER
 231. 7632" DIA. STORM SEWER
 232. 7668" DIA. STORM SEWER
 233. 7704" DIA. STORM SEWER
 234. 7740" DIA. STORM SEWER
 235. 7776" DIA. STORM SEWER
 236. 7812" DIA. STORM SEWER
 237. 7848" DIA. STORM SEWER
 238. 7884" DIA. STORM SEWER
 239. 7920" DIA. STORM SEWER
 240. 7956" DIA. STORM SEWER
 241. 7992" DIA. STORM SEWER
 242. 8028" DIA. STORM SEWER
 243. 8064" DIA. STORM SEWER
 244. 8100" DIA. STORM SEWER
 245. 8136" DIA. STORM SEWER
 246. 8172" DIA. STORM SEWER
 247. 8208" DIA. STORM SEWER
 248. 8244" DIA. STORM SEWER
 249. 8280" DIA. STORM SEWER
 250. 8316" DIA. STORM SEWER
 251. 8352" DIA. STORM SEWER
 252. 8388" DIA. STORM SEWER
 253. 8424" DIA. STORM SEWER
 254. 8460" DIA. STORM SEWER
 255. 8496" DIA. STORM SEWER
 256. 8532" DIA. STORM SEWER
 257. 8568" DIA. STORM SEWER
 258. 8604" DIA. STORM SEWER
 259. 8640" DIA. STORM SEWER
 260. 8676" DIA. STORM SEWER
 261. 8712" DIA. STORM SEWER
 262. 8748" DIA. STORM SEWER
 263. 8784" DIA. STORM SEWER
 264. 8820" DIA. STORM SEWER
 265. 8856" DIA. STORM SEWER
 266. 8892" DIA. STORM SEWER
 267. 8928" DIA. STORM SEWER
 268. 8964" DIA. STORM SEWER
 269. 9000" DIA. STORM SEWER
 270. 9036" DIA. STORM SEWER
 271. 9072" DIA. STORM SEWER
 272. 9108" DIA. STORM SEWER
 273. 9144" DIA. STORM SEWER
 274. 9180" DIA. STORM SEWER
 275. 9216" DIA. STORM SEWER
 276. 9252" DIA. STORM SEWER
 277. 9288" DIA. STORM SEWER
 278. 9324" DIA. STORM SEWER
 279. 9360" DIA. STORM SEWER
 280. 9396" DIA. STORM SEWER
 281. 9432" DIA. STORM SEWER
 282. 9468" DIA. STORM SEWER
 283. 9504" DIA. STORM SEWER
 284. 9540" DIA. STORM SEWER
 285. 9576" DIA. STORM SEWER
 286. 9612" DIA. STORM SEWER
 287. 9648" DIA. STORM SEWER
 288. 9684" DIA. STORM SEWER
 289. 9720" DIA. STORM SEWER
 290. 9756" DIA. STORM SEWER
 291. 9792" DIA. STORM SEWER
 292. 9828" DIA. STORM SEWER
 293. 9864" DIA. STORM SEWER
 294. 9900" DIA. STORM SEWER
 295. 9936" DIA. STORM SEWER
 296. 9972" DIA. STORM SEWER
 297. 10008" DIA. STORM SEWER
 298. 10044" DIA. STORM SEWER
 299. 10080" DIA. STORM SEWER
 300. 10116" DIA. STORM SEWER
 301. 10152" DIA. STORM SEWER
 302. 10188" DIA. STORM SEWER
 303. 10224" DIA. STORM SEWER
 304. 10260" DIA. STORM SEWER
 305. 10296" DIA. STORM SEWER
 306. 10332" DIA. STORM SEWER
 307. 10368" DIA. STORM SEWER
 308. 10404" DIA. STORM SEWER
 309. 10440" DIA. STORM SEWER
 310. 10476" DIA. STORM SEWER
 311. 10512" DIA. STORM SEWER
 312. 10548" DIA. STORM SEWER
 313. 10584" DIA. STORM SEWER
 314. 10620" DIA. STORM SEWER
 315. 10656" DIA. STORM SEWER
 316. 10692" DIA. STORM SEWER
 317. 10728" DIA. STORM SEWER
 318. 10764" DIA. STORM SEWER
 319. 10800" DIA. STORM SEWER
 320. 10836" DIA. STORM SEWER
 321. 10872" DIA. STORM SEWER
 322. 10908" DIA. STORM SEWER
 323. 10944" DIA. STORM SEWER
 324. 10980" DIA. STORM SEWER
 325. 11016" DIA. STORM SEWER
 326. 11052" DIA. STORM SEWER
 327. 11088" DIA. STORM SEWER
 328. 11124" DIA. STORM SEWER
 329. 11160" DIA. STORM SEWER
 330. 11196" DIA. STORM SEWER
 331. 11232" DIA. STORM SEWER
 332. 11268" DIA. STORM SEWER
 333. 11304" DIA. STORM SEWER
 334. 11340" DIA. STORM SEWER
 335. 11376" DIA. STORM SEWER
 336. 11412" DIA. STORM SEWER
 337. 11448" DIA. STORM SEWER
 338. 11484" DIA. STORM SEWER
 339. 11520" DIA. STORM SEWER
 340. 11556" DIA. STORM SEWER
 341. 11592" DIA. STORM SEWER
 342. 11628" DIA. STORM SEWER
 343. 11664" DIA. STORM SEWER
 344. 11700" DIA. STORM SEWER
 345. 11736" DIA. STORM SEWER
 346. 11772" DIA. STORM SEWER
 347. 11808" DIA. STORM SEWER
 348. 11844" DIA. STORM SEWER
 349. 11880" DIA. STORM SEWER
 350. 11916" DIA. STORM SEWER
 351. 11952" DIA. STORM SEWER
 352. 11988" DIA. STORM SEWER
 353. 12024" DIA. STORM SEWER
 354. 12060" DIA. STORM SEWER
 355. 12096" DIA. STORM SEWER
 356. 12132" DIA. STORM SEWER
 357. 12168" DIA. STORM SEWER
 358. 12204" DIA. STORM SEWER
 359. 12240" DIA. STORM SEWER
 360. 12276" DIA. STORM SEWER
 361. 12312" DIA. STORM SEWER
 362. 12348" DIA. STORM SEWER
 363. 12384" DIA. STORM SEWER
 364. 12420" DIA. STORM SEWER
 365. 12456" DIA. STORM SEWER
 366. 12492" DIA. STORM SEWER
 367. 12528" DIA. STORM SEWER
 368. 12564" DIA. STORM SEWER
 369. 12600" DIA. STORM SEWER
 370. 12636" DIA. STORM SEWER
 371. 12672" DIA. STORM SEWER
 372. 12708" DIA. STORM SEWER
 373. 12744" DIA. STORM SEWER
 374. 12780" DIA. STORM SEWER
 375. 12816" DIA. STORM SEWER
 376. 12852" DIA. STORM SEWER
 377. 12888" DIA. STORM SEWER
 378. 12924" DIA. STORM SEWER
 379. 12960" DIA. STORM SEWER
 380. 12996" DIA. STORM SEWER
 381. 13032" DIA. STORM SEWER
 382. 13068" DIA. STORM SEWER
 383. 13104" DIA. STORM SEWER
 384. 13140" DIA. STORM SEWER
 385. 13176" DIA. STORM SEWER
 386. 13212" DIA. STORM SEWER
 387. 13248" DIA. STORM SEWER
 388. 13284" DIA. STORM SEWER
 389. 13320" DIA. STORM SEWER
 390. 13356" DIA. STORM SEWER
 391. 13392" DIA. STORM SEWER
 392. 13428" DIA. STORM SEWER
 393. 13464" DIA. STORM SEWER
 394. 13500" DIA. STORM SEWER
 395. 13536" DIA. STORM SEWER
 396. 13572" DIA. STORM SEWER
 397. 13608" DIA. STORM SEWER
 398. 13644" DIA. STORM SEWER
 399. 13680" DIA. STORM SEWER
 400. 13716" DIA. STORM SEWER
 401. 13752" DIA. STORM SEWER
 402. 13788" DIA. STORM SEWER
 403. 13824" DIA. STORM SEWER
 404. 13860" DIA. STORM SEWER
 405. 13896" DIA. STORM SEWER
 406. 13932" DIA. STORM SEWER
 407. 13968" DIA. STORM SEWER
 408. 14004" DIA. STORM SEWER
 409. 14040" DIA. STORM SEWER
 410. 14076" DIA. STORM SEWER
 411. 14112" DIA. STORM SEWER
 412. 14148" DIA. STORM SEWER
 413. 14184" DIA. STORM SEWER
 414. 14220" DIA. STORM SEWER
 415. 14256" DIA. STORM SEWER
 416. 14292" DIA. STORM SEWER
 417. 14328" DIA. STORM SEWER
 418. 14364" DIA. STORM SEWER
 419. 14400" DIA. STORM SEWER
 420. 14436" DIA. STORM SEWER
 421. 14472" DIA. STORM SEWER
 422. 14508" DIA. STORM SEWER
 423. 14544" DIA. STORM SEWER
 424. 14580" DIA. STORM SEWER
 425. 14616" DIA. STORM SEWER
 426. 14652" DIA. STORM SEWER
 427. 14688" DIA. STORM SEWER
 428. 14724" DIA. STORM SEWER
 429. 14760" DIA. STORM SEWER
 430. 14796" DIA. STORM SEWER
 431. 14832" DIA. STORM SEWER
 432. 14868" DIA. STORM SEWER
 433. 14904" DIA. STORM SEWER
 434. 14940" DIA. STORM SEWER
 435. 14976" DIA. STORM SEWER
 436. 15012" DIA. STORM SEWER
 437. 15048" DIA. STORM SEWER
 438. 15084" DIA. STORM SEWER
 439. 15120" DIA. STORM SEWER
 440. 15156" DIA. STORM SEWER
 441. 15192" DIA. STORM SEWER
 442. 15228" DIA. STORM SEWER
 443. 15264" DIA. STORM SEWER
 444. 15300" DIA. STORM SEWER
 445. 15336" DIA. STORM SEWER
 446. 15372" DIA. STORM SEWER
 447. 15408" DIA. STORM SEWER
 448. 15444" DIA. STORM SEWER
 449. 15480" DIA. STORM SEWER
 450. 15516" DIA. STORM SEWER
 451. 15552" DIA. STORM SEWER
 452. 15588" DIA. STORM SEWER
 453. 15624" DIA. STORM SEWER
 454. 15660" DIA. STORM SEWER
 455. 15696" DIA. STORM SEWER
 456. 15732" DIA. STORM SEWER
 457. 15768" DIA. STORM SEWER
 458. 15804" DIA. STORM SEWER
 459. 15840" DIA. STORM SEWER
 460. 15876" DIA. STORM SEWER
 461. 15912" DIA. STORM SEWER
 462. 15948" DIA. STORM SEWER
 463. 15984" DIA. STORM SEWER
 464. 16020" DIA. STORM SEWER
 465. 16056" DIA. STORM SEWER
 466. 16092" DIA. STORM SEWER
 467. 16128" DIA. STORM SEWER
 468. 16164" DIA. STORM SEWER
 469. 16200" DIA. STORM SEWER
 470. 16236" DIA. STORM SEWER
 471. 16272" DIA. STORM SEWER
 472. 16308" DIA. STORM SEWER
 473. 16344" DIA. STORM SEWER
 474. 16380" DIA. STORM SEWER
 475. 16416" DIA. STORM SEWER
 476. 16452" DIA. STORM SEWER
 477. 16488" DIA. STORM SEWER
 478. 16524" DIA. STORM SEWER
 479. 16560" DIA. STORM SEWER
 480. 16596" DIA. STORM SEWER
 481. 16632" DIA. STORM SEWER
 482. 16668" DIA. STORM SEWER
 483. 16704" DIA. STORM SEWER
 484. 16740" DIA. STORM SEWER
 485. 16776" DIA. STORM SEWER
 486. 16812" DIA. STORM SEWER
 487. 16848" DIA. STORM SEWER
 488. 16884" DIA. STORM SEWER
 489. 16920" DIA. STORM SEWER
 490. 16956" DIA. STORM SEWER
 491. 16992" DIA. STORM SEWER
 492. 17028" DIA. STORM SEWER
 493. 17064" DIA. STORM SEWER
 494. 17100" DIA. STORM SEWER
 495. 17136" DIA. STORM SEWER
 496. 17172" DIA. STORM SEWER
 497. 17208" DIA. STORM SEWER
 498. 17244" DIA. STORM SEWER
 499. 17280" DIA. STORM SEWER
 500. 17316" DIA. STORM SEWER
 501. 17352" DIA. STORM SEWER
 502. 17388" DIA. STORM SEWER
 503. 17424" DIA. STORM SEWER
 504. 17460" DIA. STORM SEWER
 505. 17496" DIA. STORM SEWER
 506. 17532" DIA. STORM SEWER
 507. 17568" DIA. STORM SEWER
 508. 17604" DIA. STORM SEWER
 509. 17640" DIA. STORM SEWER
 510. 17676" DIA. STORM SEWER
 511. 17712" DIA. STORM SEWER
 512. 17748" DIA. STORM SEWER
 513. 17784" DIA. STORM SEWER
 514. 17820" DIA. STORM SEWER
 515. 17856" DIA. STORM SEWER
 516. 17892" DIA. STORM SEWER
 517. 17928" DIA. STORM SEWER
 518. 17964" DIA. STORM SEWER
 519. 18000" DIA. STORM SEWER
 520. 18036" DIA. STORM SEWER
 521. 18072" DIA. STORM SEWER
 522. 18108" DIA. STORM SEWER
 523. 18144" DIA. STORM SEWER
 524. 18180" DIA. STORM SEWER
 525. 18216" DIA. STORM SEWER
 526. 18252" DIA. STORM SEWER
 527. 18288" DIA. STORM SEWER
 528. 18324" DIA. STORM SEWER
 529. 18360" DIA. STORM SEWER
 530. 18396" DIA. STORM SEWER
 531. 18432" DIA. STORM SEWER
 532. 18468" DIA. STORM SEWER
 533. 18504" DIA. STORM SEWER
 534. 18540" DIA. STORM SEWER
 535. 18576" DIA. STORM SEWER
 536. 18612" DIA. STORM SEWER
 537. 18648" DIA. STORM SEWER
 538. 18684" DIA. STORM SEWER
 539. 18720" DIA. STORM SEWER
 540. 18756" DIA. STORM SEWER
 541. 18792" DIA. STORM SEWER
 542. 18828" DIA

CENTRAL RECORDING SERVICE (MERCER #6203 12 17 19 484171)
 ELEVATION = 89.10 MILES
 PROJECT NO. 12
 RICHMOND, TEXAS
 EXISTING ROAD WIDENING
 EXISTING ROAD WIDENING

MOHIT
CRAWFORD
GYMNASTICS BUILDING
RICHMOND TEXAS

PROJECT NUMBER: BG 21088.00
 DRAWING ISSUE SCHEDULE: 01
 DATE: 01/16/20



- NOTES**
1. PLACE FILTER FABRIC SLOTTED FENCE 4'-0" TO 5' FEET AROUND ALL LOTS.
 2. ALL SOIL, STRUCTURES OR SIGNIFICANT SIZE SHALL BE ENCASED BY THE CONSTRUCTION OF THE FENCE.
 3. ALL PROPOSED STABILIZED CONSTRUCTION ACCESS SHALL BE ENCASED BY THE CONSTRUCTION OF THE FENCE.
 4. TO MAINTAIN THE PROPOSED FENCE IN THE CONSTRUCTION AREA, THE CONTRACTOR SHALL BE RESPONSIBLE FOR MAINTAINING ALL FACILITIES INDICATED ON THIS PLAN.
 5. THE CONTRACTOR SHALL BE RESPONSIBLE FOR MAINTAINING ALL FACILITIES INDICATED ON THIS PLAN.
 6. THE CONTRACTOR SHALL BE RESPONSIBLE FOR MAINTAINING ALL FACILITIES INDICATED ON THIS PLAN.
 7. MAINTAIN THE EXISTING STORM SEWER AND SANITARY SEWER LINES.
 8. MAINTAIN THE EXISTING STORM SEWER AND SANITARY SEWER LINES.
 9. MAINTAIN THE EXISTING STORM SEWER AND SANITARY SEWER LINES.

APPROVED: [Signature]
 DATE: 01/16/20

POLLUTION PREVENTION PLAN



C1.7

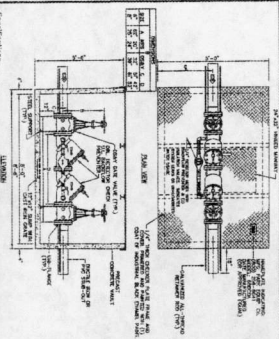
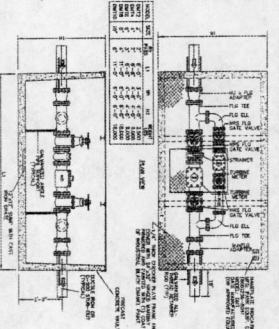
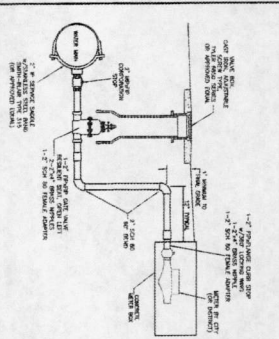
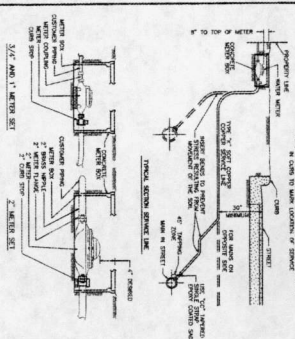
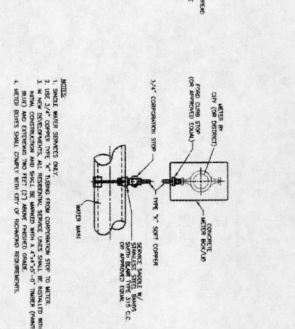
CRAWFORD

GYMNASTICS BUILDING

RICHMOND TEXAS

PROJECT NUMBER: 08 21096.00
 DRAWING ISSUE SCHEDULE
 DATE

<p>1. WATER LINE BEDDING</p>	<p>2. THRUST BLOCK</p>	<p>3. GATE VALVE AND BOX</p>	<p>4. WATER LINE CASING</p>
<p>5. FIRE HYDRANT</p>	<p>6. 2\"/> </p>	<p>7. WATER PIPE OFFSET ASSEMBLY</p>	<p>8. WATER LINE LOCATION PLAN</p>
<p>9. BLOWOFF LOCATION PLAN</p>	<p>CITY OF RICHMOND STANDARD CONSTRUCTION DETAILS WATER</p> <p>SCALE: 1" = 8'-0" (VERTICAL), 1" = 8'-0" (HORIZONTAL)</p> <p>DATE: 10/4/16</p> <p>PROJECT NUMBER: 08 21096.00</p> <p>DRAWING ISSUE SCHEDULE</p> <p>DATE</p>		

 <p>1. DOUBLE CHECK DETECTOR ASSEMBLY</p> <p>NOTE: SERVICE TO SIDE OF SERVICE LINES</p> <p>DESCRIPTION: This detail shows the installation of a double check detector assembly to prevent backflow of water into the public water supply. It includes a check valve, a pressure-sensing device, and a bypass line for fire protection systems.</p>	 <p>2. DOMESTIC TURBINE WATER METER ASSEMBLY</p> <p>DESCRIPTION: This detail shows the installation of a domestic turbine water meter. It includes the meter body, a bypass line, and connections to the water supply and service lines.</p>	 <p>3. 2" WATER SERVICE CONNECTION</p> <p>NOTE: 2" SIZE IS PER 1995 AND 1998</p> <p>DESCRIPTION: This detail shows the connection between a 2-inch water service line and a 1.5-inch water meter. It includes a 2-inch service valve, a 1.5-inch meter, and a bypass line.</p>	<p>DATE: _____</p> <p>SCALE: _____</p> <p>PROJECT: _____</p> <p>DRAWING NO.: _____</p> <p>ISSUE: _____</p>
 <p>4. RESIDENTIAL WATER METER AND SERVICE LINE</p> <p>DESCRIPTION: This detail shows the installation of a residential water meter and service line. It includes a 1/2-inch meter set, a 1/2-inch service line, and a 1/2-inch water meter.</p>	 <p>DESCRIPTION: This detail shows the installation of a residential water meter and service line. It includes a 1/2-inch meter set, a 1/2-inch service line, and a 1/2-inch water meter.</p>		

CITY OF RICHMOND
STANDARD CONNECTION DETAILS
WATER

SCALE: _____

DATE: _____

PROJECT: _____

DRAWING NO.: _____

ISSUE: _____



APPROVED: _____
DATE: 10/1/16

<p>1. MANHOLE AND INLET FRAME AND COVER</p> <p>NOTES: 1. ALL LITERATURE SHALL BE AT LEAST 1/8" THICK AND SHALL BE PRINTED ON UNCOLORED PAPER. 2. ALL DIMENSIONS SHALL BE IN INCHES UNLESS OTHERWISE SPECIFIED. 3. ALL DIMENSIONS SHALL BE TO CENTER UNLESS OTHERWISE SPECIFIED. 4. ALL DIMENSIONS SHALL BE TO FACE UNLESS OTHERWISE SPECIFIED.</p>	<p>2. STORM SEWER BEDDING</p> <p>NOTES: 1. BEDDING SHALL BE AS SHOWN UNLESS OTHERWISE SPECIFIED. 2. BEDDING SHALL BE COMPACTED TO 95% OF THEORETICAL DENSITY. 3. BEDDING SHALL BE COMPACTED TO 90% OF THEORETICAL DENSITY. 4. BEDDING SHALL BE COMPACTED TO 85% OF THEORETICAL DENSITY.</p>	<p>3. STORM SEWER BEDDING FOR WET CONDITIONS</p> <p>NOTES: 1. BEDDING SHALL BE AS SHOWN UNLESS OTHERWISE SPECIFIED. 2. BEDDING SHALL BE COMPACTED TO 95% OF THEORETICAL DENSITY. 3. BEDDING SHALL BE COMPACTED TO 90% OF THEORETICAL DENSITY. 4. BEDDING SHALL BE COMPACTED TO 85% OF THEORETICAL DENSITY.</p>	<p>5. TYPE 'E' INLET</p> <p>NOTES: 1. ALL DIMENSIONS SHALL BE IN INCHES UNLESS OTHERWISE SPECIFIED. 2. ALL DIMENSIONS SHALL BE TO CENTER UNLESS OTHERWISE SPECIFIED. 3. ALL DIMENSIONS SHALL BE TO FACE UNLESS OTHERWISE SPECIFIED.</p>	<p>6. TYPE 'A' INLET</p> <p>NOTES: 1. ALL DIMENSIONS SHALL BE IN INCHES UNLESS OTHERWISE SPECIFIED. 2. ALL DIMENSIONS SHALL BE TO CENTER UNLESS OTHERWISE SPECIFIED. 3. ALL DIMENSIONS SHALL BE TO FACE UNLESS OTHERWISE SPECIFIED.</p>	<p>7. TYPE 'H-2' INLET</p> <p>NOTES: 1. ALL DIMENSIONS SHALL BE IN INCHES UNLESS OTHERWISE SPECIFIED. 2. ALL DIMENSIONS SHALL BE TO CENTER UNLESS OTHERWISE SPECIFIED. 3. ALL DIMENSIONS SHALL BE TO FACE UNLESS OTHERWISE SPECIFIED.</p>	<p>8. TYPE 'C' INLET</p> <p>NOTES: 1. ALL DIMENSIONS SHALL BE IN INCHES UNLESS OTHERWISE SPECIFIED. 2. ALL DIMENSIONS SHALL BE TO CENTER UNLESS OTHERWISE SPECIFIED. 3. ALL DIMENSIONS SHALL BE TO FACE UNLESS OTHERWISE SPECIFIED.</p>	<p>9. TYPE 'C' MANHOLE FOR 48" TO 72" DA. R.C.P.</p> <p>NOTES: 1. ALL DIMENSIONS SHALL BE IN INCHES UNLESS OTHERWISE SPECIFIED. 2. ALL DIMENSIONS SHALL BE TO CENTER UNLESS OTHERWISE SPECIFIED. 3. ALL DIMENSIONS SHALL BE TO FACE UNLESS OTHERWISE SPECIFIED.</p>
<p>4. MANHOLE TYPE 'C' FOR 42" DA. R.C.P. AND SMALLER</p> <p>NOTES: 1. ALL DIMENSIONS SHALL BE IN INCHES UNLESS OTHERWISE SPECIFIED. 2. ALL DIMENSIONS SHALL BE TO CENTER UNLESS OTHERWISE SPECIFIED. 3. ALL DIMENSIONS SHALL BE TO FACE UNLESS OTHERWISE SPECIFIED.</p>							

LIST OF REVISIONS

NO.	DATE	DESCRIPTION
1	11/11/11	ISSUED FOR PERMIT
2	11/11/11	ISSUED FOR CONSTRUCTION

STANDARD CONNECTION DETAILS

STORM SEWER

SCALE: 1" = 1'-0"

DATE: 11/11/11

BY: [Signature]

APPROVED: [Signature]

PROJECT: R-5

<p>1. CONCRETE SIDEWALK</p> <p>NOTES:</p> <ol style="list-style-type: none"> CONCRETE SHALL BE 4000 PSI STRENGTH. 4" COMPACTED SUBGRADE. EXPANSION JOINTS SHALL BE PLACED AT 10' INTERVALS. CONCRETE SHALL BE CURVED TO MATCH ADJACENT DRIVEWAY OR SIDEWALK. CONCRETE SHALL BE FINISHED TO MATCH ADJACENT DRIVEWAY OR SIDEWALK. 	<p>2. DRIVEWAY WITH OPEN DITCH</p> <p>NOTES:</p> <ol style="list-style-type: none"> CONCRETE SHALL BE 4000 PSI STRENGTH. 4" COMPACTED SUBGRADE. EXPANSION JOINTS SHALL BE PLACED AT 10' INTERVALS. CONCRETE SHALL BE CURVED TO MATCH ADJACENT DRIVEWAY OR SIDEWALK. CONCRETE SHALL BE FINISHED TO MATCH ADJACENT DRIVEWAY OR SIDEWALK. 	<p>3. CONCRETE DRIVEWAY</p> <p>NOTES:</p> <ol style="list-style-type: none"> CONCRETE SHALL BE 4000 PSI STRENGTH. 4" COMPACTED SUBGRADE. EXPANSION JOINTS SHALL BE PLACED AT 10' INTERVALS. CONCRETE SHALL BE CURVED TO MATCH ADJACENT DRIVEWAY OR SIDEWALK. CONCRETE SHALL BE FINISHED TO MATCH ADJACENT DRIVEWAY OR SIDEWALK. 	<p>4. CONCRETE SIDEWALK RAMP</p> <p>NOTES:</p> <ol style="list-style-type: none"> CONCRETE SHALL BE 4000 PSI STRENGTH. 4" COMPACTED SUBGRADE. EXPANSION JOINTS SHALL BE PLACED AT 10' INTERVALS. CONCRETE SHALL BE CURVED TO MATCH ADJACENT DRIVEWAY OR SIDEWALK. CONCRETE SHALL BE FINISHED TO MATCH ADJACENT DRIVEWAY OR SIDEWALK.
<p>5. TRAFFIC MARKINGS</p> <p>NOTES:</p> <ol style="list-style-type: none"> CONCRETE SHALL BE 4000 PSI STRENGTH. 4" COMPACTED SUBGRADE. EXPANSION JOINTS SHALL BE PLACED AT 10' INTERVALS. CONCRETE SHALL BE CURVED TO MATCH ADJACENT DRIVEWAY OR SIDEWALK. CONCRETE SHALL BE FINISHED TO MATCH ADJACENT DRIVEWAY OR SIDEWALK. 	<p>6. 4"x12" TRANSITION CURB</p> <p>NOTES:</p> <ol style="list-style-type: none"> CONCRETE SHALL BE 4000 PSI STRENGTH. 4" COMPACTED SUBGRADE. EXPANSION JOINTS SHALL BE PLACED AT 10' INTERVALS. CONCRETE SHALL BE CURVED TO MATCH ADJACENT DRIVEWAY OR SIDEWALK. CONCRETE SHALL BE FINISHED TO MATCH ADJACENT DRIVEWAY OR SIDEWALK. 	<p>7. CONCRETE CURB</p> <p>NOTES:</p> <ol style="list-style-type: none"> CONCRETE SHALL BE 4000 PSI STRENGTH. 4" COMPACTED SUBGRADE. EXPANSION JOINTS SHALL BE PLACED AT 10' INTERVALS. CONCRETE SHALL BE CURVED TO MATCH ADJACENT DRIVEWAY OR SIDEWALK. CONCRETE SHALL BE FINISHED TO MATCH ADJACENT DRIVEWAY OR SIDEWALK. 	<p>8. DOWEL TYPE EXPANSION JOINT</p> <p>NOTES:</p> <ol style="list-style-type: none"> CONCRETE SHALL BE 4000 PSI STRENGTH. 4" COMPACTED SUBGRADE. EXPANSION JOINTS SHALL BE PLACED AT 10' INTERVALS. CONCRETE SHALL BE CURVED TO MATCH ADJACENT DRIVEWAY OR SIDEWALK. CONCRETE SHALL BE FINISHED TO MATCH ADJACENT DRIVEWAY OR SIDEWALK.
<p>9. PAVEMENT JOINTS</p> <p>CONSTRUCTION</p> <p>SAWED</p>	<p>10. DEFORMED METAL STRIP</p> <p>NOTES:</p> <ol style="list-style-type: none"> CONCRETE SHALL BE 4000 PSI STRENGTH. 4" COMPACTED SUBGRADE. EXPANSION JOINTS SHALL BE PLACED AT 10' INTERVALS. CONCRETE SHALL BE CURVED TO MATCH ADJACENT DRIVEWAY OR SIDEWALK. CONCRETE SHALL BE FINISHED TO MATCH ADJACENT DRIVEWAY OR SIDEWALK. 	<p>11. PAVEMENT HEADER</p> <p>NOTES:</p> <ol style="list-style-type: none"> CONCRETE SHALL BE 4000 PSI STRENGTH. 4" COMPACTED SUBGRADE. EXPANSION JOINTS SHALL BE PLACED AT 10' INTERVALS. CONCRETE SHALL BE CURVED TO MATCH ADJACENT DRIVEWAY OR SIDEWALK. CONCRETE SHALL BE FINISHED TO MATCH ADJACENT DRIVEWAY OR SIDEWALK. 	<p>12. PAVEMENT UNDERCUT</p> <p>NOTES:</p> <ol style="list-style-type: none"> CONCRETE SHALL BE 4000 PSI STRENGTH. 4" COMPACTED SUBGRADE. EXPANSION JOINTS SHALL BE PLACED AT 10' INTERVALS. CONCRETE SHALL BE CURVED TO MATCH ADJACENT DRIVEWAY OR SIDEWALK. CONCRETE SHALL BE FINISHED TO MATCH ADJACENT DRIVEWAY OR SIDEWALK.

CITY OF RICHMOND STANDARD CONSTRUCTION DETAILS PAVING	
SCALE	AS SHOWN
APPROVED	DATE
PROJECT NO.	DATE
DATE	DATE

R-6

1. STANDARD CONCRETE CURB AND GUTTER STREET CROSS-SECTIONS

DOUBLE ROADWAY SECTION

SINGLE ROADWAY SECTION

NOTE:

- CONCRETE SHALL BE 4,000 P.S.I. COMPRESSIVE STRENGTH AT 28 DAYS AND A MINIMUM 10% AIR ENTRAINMENT. ALL DIMENSIONS SHALL BE AS SHOWN UNLESS OTHERWISE NOTED.
- CONCRETE SHALL BE PLACED IN PLACE AND FINISHED TO THE SURFACE OF THE CURB AND GUTTER. THE CURB SHALL BE FINISHED TO THE TOP OF THE CURB.
- THE CURB SHALL BE FINISHED TO THE TOP OF THE CURB.
- THE CURB SHALL BE FINISHED TO THE TOP OF THE CURB.
- THE CURB SHALL BE FINISHED TO THE TOP OF THE CURB.

2. STANDARD CONCRETE PAVEMENT WITH OPEN DITCH CROSS-SECTION

NOTE:

- CONCRETE SHALL BE 4,000 P.S.I. COMPRESSIVE STRENGTH AT 28 DAYS AND A MINIMUM 10% AIR ENTRAINMENT. ALL DIMENSIONS SHALL BE AS SHOWN UNLESS OTHERWISE NOTED.
- CONCRETE SHALL BE PLACED IN PLACE AND FINISHED TO THE SURFACE OF THE PAVEMENT. THE PAVEMENT SHALL BE FINISHED TO THE TOP OF THE PAVEMENT.
- THE PAVEMENT SHALL BE FINISHED TO THE TOP OF THE PAVEMENT.
- THE PAVEMENT SHALL BE FINISHED TO THE TOP OF THE PAVEMENT.
- THE PAVEMENT SHALL BE FINISHED TO THE TOP OF THE PAVEMENT.

3. STANDARD ASPHALT PAVEMENT WITH OPEN DITCH CROSS-SECTION

NOTE:

- ASPHALT SHALL BE PLACED IN PLACE AND FINISHED TO THE SURFACE OF THE PAVEMENT. THE PAVEMENT SHALL BE FINISHED TO THE TOP OF THE PAVEMENT.
- THE PAVEMENT SHALL BE FINISHED TO THE TOP OF THE PAVEMENT.
- THE PAVEMENT SHALL BE FINISHED TO THE TOP OF THE PAVEMENT.
- THE PAVEMENT SHALL BE FINISHED TO THE TOP OF THE PAVEMENT.
- THE PAVEMENT SHALL BE FINISHED TO THE TOP OF THE PAVEMENT.

4. TRAFFIC SIGNAGE

NOTE:

- TRAFFIC SIGNS SHALL BE PLACED IN ACCORDANCE WITH THE TEXAS TRANSPORTATION CODE.
- TRAFFIC SIGNS SHALL BE PLACED IN ACCORDANCE WITH THE TEXAS TRANSPORTATION CODE.
- TRAFFIC SIGNS SHALL BE PLACED IN ACCORDANCE WITH THE TEXAS TRANSPORTATION CODE.
- TRAFFIC SIGNS SHALL BE PLACED IN ACCORDANCE WITH THE TEXAS TRANSPORTATION CODE.
- TRAFFIC SIGNS SHALL BE PLACED IN ACCORDANCE WITH THE TEXAS TRANSPORTATION CODE.

5. SLOPED END TREATMENT

NOTE:

- CONCRETE SHALL BE 4,000 P.S.I. COMPRESSIVE STRENGTH AT 28 DAYS AND A MINIMUM 10% AIR ENTRAINMENT. ALL DIMENSIONS SHALL BE AS SHOWN UNLESS OTHERWISE NOTED.
- CONCRETE SHALL BE PLACED IN PLACE AND FINISHED TO THE SURFACE OF THE PAVEMENT. THE PAVEMENT SHALL BE FINISHED TO THE TOP OF THE PAVEMENT.
- THE PAVEMENT SHALL BE FINISHED TO THE TOP OF THE PAVEMENT.
- THE PAVEMENT SHALL BE FINISHED TO THE TOP OF THE PAVEMENT.
- THE PAVEMENT SHALL BE FINISHED TO THE TOP OF THE PAVEMENT.

6. TYPE 'III' BARRICADE

NOTE:

- CONCRETE SHALL BE 4,000 P.S.I. COMPRESSIVE STRENGTH AT 28 DAYS AND A MINIMUM 10% AIR ENTRAINMENT. ALL DIMENSIONS SHALL BE AS SHOWN UNLESS OTHERWISE NOTED.
- CONCRETE SHALL BE PLACED IN PLACE AND FINISHED TO THE SURFACE OF THE BARRICADE. THE BARRICADE SHALL BE FINISHED TO THE TOP OF THE BARRICADE.
- THE BARRICADE SHALL BE FINISHED TO THE TOP OF THE BARRICADE.
- THE BARRICADE SHALL BE FINISHED TO THE TOP OF THE BARRICADE.
- THE BARRICADE SHALL BE FINISHED TO THE TOP OF THE BARRICADE.

CITY OF RICHMOND STANDARD CONSTRUCTION DETAILS

SCALE:

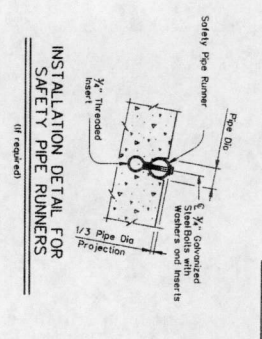
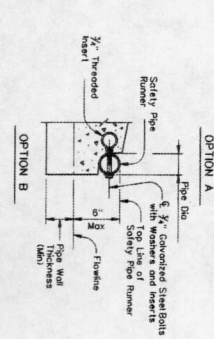
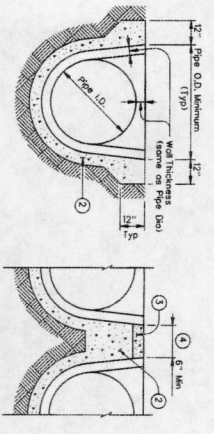
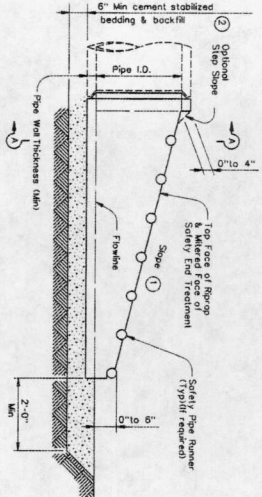
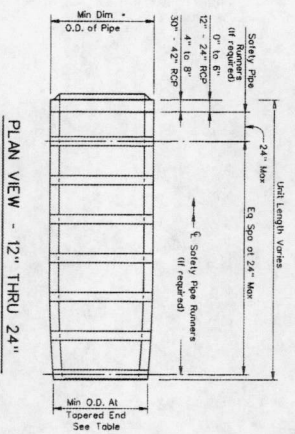
AS SHOWN

R-7

APPROVED: 
DATE: 10/11/11

PIPE I.D.	MINIMUM WALL THICKNESS	MINIMUM O.D.	MIN. A.L.E. END	MIN. REINF. REQUIREMENTS (59 #/ft ³ of pipe)	MAXIMUM SCORE	MINIMUM LENGTH UNIT	PIPE RUNNERS SINGLE PIPE	MULTIPLE PIPE	MINIMUM RUNNER SIZES	REQUIRED PRECAST RUNNER SIZES	I.D.
12"	2"	18"	18"	0.07 CMC.	6.1	4'-0"	No	Yes, for 32 pipes	3" STD	3,500"	3,068"
15"	2 1/2"	19 1/2"	19"	0.07 CMC.	6.1	5'-8"	No	Yes, for 32 pipes	3" STD	3,500"	3,068"
18"	2 1/2"	23"	21 1/2"	0.07 CMC.	6.1	7'-3"	No	Yes, for 32 pipes	3" STD	3,500"	3,068"
24"	3"	30"	27"	0.07 CMC.	6.1	10'-6"	No	Yes, for 32 pipes	3" STD	3,500"	3,068"
30"	3 1/2"	37"	34"	0.18 CMC.	6.1	12'-1"	No	Yes	4" STD	4,500"	4,028"
36"	4"	44"	38"	0.18 ELP.	6.1	15'-4"	Yes	Yes	4" STD	4,500"	4,028"
42"	4 1/2"	51"	41 1/2"	0.23 ELP.	6.1	18'-7"	Yes	Yes	4" STD	4,500"	4,028"

- 1 Slope on shown elsewhere in the plans. Slope of 1/4" or flatter is required for vehicle safety.
- 2 Cement stabilized bedding and backfill shall be placed on top of the concrete and shall be compacted to the height specified around the Safety End Treatment backfill and on directed by Engineer.
- 3 The top 4" of void between Precast End Treatment considered subsidiary to Safety End Treatment. Safety End Treatment shall be adjusted to meet minimum distance between Safety End Treatment.
- 4 Clear distance between pipes shall be adjusted to meet minimum distance between Safety End Treatment.



GENERAL NOTES:
 Precast safety end treatment for reinforced concrete pipe may be used for TYPE I and treatment as specified in item "Safety End Treatment" to meet RCP. Safety End Treatment shall be installed in accordance with the joint seal concrete and setting shall be manufactured in accordance with item "Reinforced Concrete Pipe Cover" and in accordance with ASTM Specification C-75, Class A, M40 for circular pipe, single or double end treatment, or downstream end conditions and conditions joint compound or reformed plastic gasket material. Manufacturer of lifting shall be provided by the manufacturer for use of pipe. Safety End Treatment shall be installed in accordance with the manufacturer's instructions. Safety End Treatment shall be installed in accordance with the manufacturer's instructions. Safety End Treatment shall be installed in accordance with the manufacturer's instructions.

Texas Department of Transportation
 PRECAST SAFETY END TREATMENT
 TYPE II - PARALLEL DRAINAGE
 PSET-RP

1	2	3	4	5	6	7	8	9	10	11	12	13	14	15	16	17	18	19	20	21	22	23	24	25	26	27	28	29	30	31	32	33	34	35	36	37	38	39	40	41	42	43	44	45	46	47	48	49	50	51	52	53	54	55	56	57	58	59	60	61	62	63	64	65	66	67	68	69	70	71	72	73	74	75	76	77	78	79	80	81	82	83	84	85	86	87	88	89	90	91	92	93	94	95	96	97	98	99	100
---	---	---	---	---	---	---	---	---	----	----	----	----	----	----	----	----	----	----	----	----	----	----	----	----	----	----	----	----	----	----	----	----	----	----	----	----	----	----	----	----	----	----	----	----	----	----	----	----	----	----	----	----	----	----	----	----	----	----	----	----	----	----	----	----	----	----	----	----	----	----	----	----	----	----	----	----	----	----	----	----	----	----	----	----	----	----	----	----	----	----	----	----	----	----	----	----	----	----	-----

DISCLAIMER:
 The use of this standard is governed by the Texas Engineering Practice Act. No warranty of any kind is made by TxDOT for any purpose whatsoever. TxDOT assumes no responsibility for the conversion of the standard to other formats or for incorrect results or damages resulting from its use.



DATE: 1/4/16

STORM		
Node ID	North:ing	East:ing
10002	13779840.28	3003101.92
10003	13779838.81	3003061.29
10004	13779837.13	3003072.41
10005	13779835.45	3003083.53
10007	13779834.77	3003078.94
10008	13779833.09	3002899.57
10009	13779831.41	3002903.01
10010	13779829.73	3002891.86
10011	13779828.05	3002902.92

SANITARY		
Node ID	North:ing	East:ing
11001	13779560.42	3003055.78
11002	13779559.72	3003043.79
11003	13779559.02	3003030.32
11004	13779558.32	3003016.85

WATER		
Node ID	North:ing	East:ing
12001	13779550.35	3003119.57
12002	13779549.65	3003107.56
12003	13779548.95	3003117.19
12004	13779548.25	3003126.82
12007	13779547.55	3003108.52
12008	13779546.85	3003105.09
12009	13779546.15	3003108.10
12010	13779545.45	3003104.87
12011	13779544.75	3003100.19
12012	13779544.05	3003092.34
12013	13779543.35	3003097.73
12014	13779542.65	3003094.04
12015	13779541.95	3003075.36
12017	13779541.25	3003079.21
12018	13779540.55	3003074.99
12019	13779539.85	3003031.16
12021	13779539.15	3003031.06

PAVING		
Node ID	North:ing	East:ing
8001	13779519.06	3003040.78
8002	13779518.36	3003061.41
8004	13779517.66	3003066.44
8005	13779516.96	3003055.95
8006	13779516.26	3003055.95
8007	13779515.56	3002932.53
8008	13779514.86	3002945.80
8009	13779514.16	3002947.21
8010	13779513.46	3002921.37
8011	13779512.76	3002911.95
8012	13779512.06	3002901.44
8013	13779511.36	3002891.15
8014	13779510.66	3002891.15
8015	13779509.96	3002884.15
8016	13779509.26	3002884.15
8017	13779508.56	3002860.18
8018	13779507.86	3003048.24
8019	13779507.16	3003081.52
8020	13779506.46	3003100.24
8021	13779505.76	3003118.77
8022	13779505.06	3003120.09
8023	13779504.36	3003120.09
8024	13779503.66	3003096.18
8025	13779502.96	3003096.18
8026	13779502.26	3003093.81
8027	13779501.56	3003093.81
8028	13779500.86	3003061.81
8029	13779500.16	3003061.81
8030	13779499.46	3003052.82
8031	13779498.76	3003052.82
8032	13779498.06	3003052.82
8033	13779497.36	3003052.82
8034	13779496.66	3003052.82
8035	13779495.96	3003052.82
8036	13779495.26	3003052.82
8037	13779494.56	3003052.82
8038	13779493.86	3003052.82
8039	13779493.16	3002981.29
8040	13779492.46	3002981.29
8041	13779491.76	3002981.29
8042	13779491.06	3002981.29
8043	13779490.36	3003016.67
8044	13779489.66	3003068.49
8045	13779488.96	3003055.45
8046	13779488.26	3003055.45
8047	13779487.56	3002949.42
8048	13779486.86	3002949.42
8049	13779486.16	3002949.42
8050	13779485.46	3002949.42
8051	13779484.76	3002949.42
8052	13779484.06	3002949.42
8053	13779483.36	3002949.42
8054	13779482.66	3002949.42
8055	13779481.96	3002949.42
8056	13779481.26	3002949.42
8057	13779480.56	3002949.42
8058	13779479.86	3002949.42
8059	13779479.16	3002949.42
8060	13779478.46	3002949.42
8061	13779477.76	3002949.42
8062	13779477.06	3002949.42
8063	13779476.36	3002891.15
8064	13779475.66	3002891.15
8065	13779474.96	3002891.15
8066	13779474.26	3002891.15
8067	13779473.56	3002891.15
8068	13779472.86	3002891.15
8069	13779472.16	3002891.15
8070	13779471.46	3002891.15
8071	13779470.76	3002891.15
8072	13779470.06	3002891.15
8073	13779469.36	3002891.15
8074	13779468.66	3002891.15
8075	13779467.96	3002891.15
8076	13779467.26	3002891.15
8077	13779466.56	3002891.15
8078	13779465.86	3002891.15
8079	13779465.16	3002891.15
8080	13779464.46	3002891.15
8081	13779463.76	3002891.15
8082	13779463.06	3002891.15
8083	13779462.36	3002891.15
8084	13779461.66	3002891.15
8085	13779460.96	3002891.15
8086	13779460.26	3002891.15
8087	13779459.56	3002891.15
8088	13779458.86	3002891.15
8089	13779458.16	3002891.15
8090	13779457.46	3002891.15
8091	13779456.76	3002891.15
8092	13779456.06	3002891.15
8093	13779455.36	3002891.15
8094	13779454.66	3002891.15
8095	13779453.96	3002891.15
8096	13779453.26	3002891.15
8097	13779452.56	3002891.15
8098	13779451.86	3002891.15
8099	13779451.16	3002891.15
8100	13779450.46	3002891.15
8101	13779449.76	3002891.15
8102	13779449.06	3002891.15
8103	13779448.36	3002891.15
8104	13779447.66	3002891.15
8105	13779446.96	3002891.15
8106	13779446.26	3002891.15
8107	13779445.56	3002891.15
8108	13779444.86	3002891.15
8109	13779444.16	3002891.15
8110	13779443.46	3002891.15
8111	13779442.76	3002891.15
8112	13779442.06	3002891.15
8113	13779441.36	3002891.15
8114	13779440.66	3002891.15
8115	13779440.96	3002891.15
8116	13779440.26	3002891.15
8117	13779439.56	3002891.15
8118	13779438.86	3002891.15
8119	13779438.16	3002891.15
8120	13779437.46	3002891.15
8121	13779436.76	3002891.15
8122	13779436.06	3002891.15
8123	13779435.36	3002891.15
8124	13779434.66	3002891.15
8125	13779433.96	3002891.15
8126	13779433.26	3002891.15
8127	13779432.56	3002891.15
8128	13779431.86	3002891.15
8129	13779431.16	3002891.15
8130	13779430.46	3002891.15
8131	13779429.76	3002891.15
8132	13779429.06	3002891.15
8133	13779428.36	3002891.15
8134	13779427.66	3002891.15
8135	13779426.96	3002891.15
8136	13779426.26	3002891.15
8137	13779425.56	3002891.15
8138	13779424.86	3002891.15
8139	13779424.16	3002891.15
8140	13779423.46	3002891.15
8141	13779422.76	3002891.15
8142	13779422.06	3002891.15
8143	13779421.36	3002891.15
8144	13779420.66	3002891.15
8145	13779419.96	3002891.15
8146	13779419.26	3002891.15
8147	13779418.56	3002891.15
8148	13779417.86	3002891.15
8149	13779417.16	3002891.15
8150	13779416.46	3002891.15
8151	13779415.76	3002891.15
8152	13779415.06	3002891.15
8153	13779414.36	3002891.15
8154	13779413.66	3002891.15
8155	13779412.96	3002891.15
8156	13779412.26	3002891.15
8157	13779411.56	3002891.15
8158	13779410.86	3002891.15
8159	13779410.16	3002891.15
8160	13779409.46	3002891.15
8161	13779408.76	3002891.15
8162	13779408.06	3002891.15
8163	13779407.36	3002891.15
8164	13779406.66	3002891.15
8165	13779405.96	3002891.15
8166	13779405.26	3002891.15
8167	13779404.56	3002891.15
8168	13779403.86	3002891.15
8169	13779403.16	3002891.15
8170	13779402.46	3002891.15
8171	13779401.76	3002891.15
8172	13779401.06	3002891.15
8173	13779400.36	3002891.15
8174	13779399.66	3002891.15
8175	13779398.96	3002891.15
8176	13779398.26	3002891.15
8177	13779397.56	3002891.15
8178	13779396.86	3002891.15
8179	13779396.16	3002891.15
8180	13779395.46	3002891.15
8181	13779394.76	3002891.15
8182	13779394.06	3002891.15
8183	13779393.36	3002891.15
8184	13779392.66	3002891.15
8185	13779391.96	3002891.15
8186	13779391.26	3002891.15
8187	13779390.56	3002891.15
8188	13779389.86	3002891.15
8189	13779389.16	3002891.15
8190	13779388.46	3002891.15
8191	13779387.76	3002891.15
8192	13779387.06	3002891.15
8193	13779386.36	3002891.15
8194	13779385.66	3002891.15
8195	13779384.96	3002891.15
8196	13779384.26	3002891.15
8197	13779383.56	3002891.15
8198	13779382.86	3002891.15
8199	13779382.16	3002891.15
8200	13779381.46	3002891.15
8201	13779380.76	3002891.15
8202	13779380.06	3002891.15
8203	13779379.36	3002891.15
8204	13779378.66	3002891.15
8205	13779377.96	3002891.15
8206	13779377.26	3002891.15
8207	13779376.56	3002891.15
8208	13779375.86	3002891.15
8209	13779375.16	3002891.15
8210	13779374.46	3002891.15
8211	13779373.76	3002891.15
8212	13779373.06	3002891.15
8213	13779372.36	3002891.15
8214	13779371.66	3002891.15
8215	13779370.96	3002891.15
8216	13779370.26	3002891.15
8217	13779369.56	3002891.15
8218	13779368.86	3002891.15
8219	13779368.16	3002891.15
8220	13779367.46	3002891.15
8221	13779366.76	3002891.15
8222	13779366.06	3002891.15
8223	13779365.36	3002891.15
8224	13779364.66	3002891.15
8225	13779363.96	3002891.15
8226	13779363.26	3002891.15
8227	13779362.56	3002891.15
8228	13779361.86	3002891.15
8229	13779361.16	3002891.15
8230	13779360.46	3002891.15
8231	13779359.76	3002891.15
8232	13779359.06	30