

THE STATE OF TEXAS §
 §
 COUNTY OF FORT BEND §

**RESOLUTION AND ORDER DECREERING THE ACQUISITION OF
 PROPERTY TO BE A PUBLIC NECESSITY AND AUTHORIZING THE
 ACQUISITION AND PAYMENT OF COMPENSATION**

WHEREAS, on the 6th day of September, 2016, at a regular meeting of the Commissioners Court of Fort Bend County, Texas, sitting as the governing body of Fort Bend County, upon motion of Commissioner Meyers, seconded by Commissioner Patterson, and upon record vote, passed 5 votes in favor and 0 opposed:

RESOLUTION

RESOLVED THAT WHEREAS, the Commissioners Court has received and reviewed the plans for a public project known as the Gaston Road, Mobility Bond Project No. 13311, Precinct 3 from Greenbusch Road to Katy Flewellen Road in Fort Bend County, Texas; and,

WHEREAS, Commissioners Court has determined that public necessity and convenience exists for the location, alignment, construction, operation, and maintenance of a public project known as Gaston Road, Mobility Bond Project No. 13311, Precinct 3 from Greenbusch Road to Katy Flewellen Road in Fort Bend County, Texas, in accordance with said plans, alignment, and tract identifications which are part hereof as Exhibit "A."

ORDER

NOW THEREFORE, IT IS ORDERED AND DECREED that the plans for the location, alignment, construction, operation, and maintenance of the public project known as Gaston Road, Mobility Bond Project No. 13311, Precinct 3 from Greenbusch Road to Katy Flewellen Road in Fort Bend County, Texas, is approved.

IT IS FURTHER ORDERED AND DECREED that public necessity and convenience exist for the public project, known as Gaston Road, Mobility Bond Project No. 13311, Precinct 3 from Greenbusch Road to Katy Flewellen Road in Fort Bend County, Texas, and that the County Engineer be authorized and directed to obtain appraisals, surveys, title information and/or make official offers of specific amount for the purchase of either easement or the fee simple interest in and to the tract(s) situated within such alignment [as shown as Exhibit "A"]; that the County Attorney be authorized and directed, and he is hereby authorized and directed to file or cause to be filed proceedings in eminent domain and to acquire thereby easement or fee simple interest for said purposes in the tract(s) which cannot be acquired as aforesaid by donation, dedication, or purchase.

IT IS FURTHER ORDERED AND DECREED that the County Judge or designated representative be authorized and directed to sign any papers or agreements associated with closing the purchase(s); the County Attorney, County Clerk, County Auditor and County Treasurer be authorized and directed to perform any and all necessary acts within their respective spheres of official duties toward the final acquisition of the tract(s) of land, or interest(s) therein, together with the improvement if any, within the said public project known as Gaston Road, Mobility Bond Project No. 13311, Precinct 3 from Greenbusch Road to Katy Flewellen Road in Fort Bend County, Texas and the payment and compensation therefore.

PASSED AND APPROVED this 6 day of September, 2016.

FORT BEND COUNTY



Robert E. Hebert, County Judge

ATTEST:



Laura Richard, County Clerk

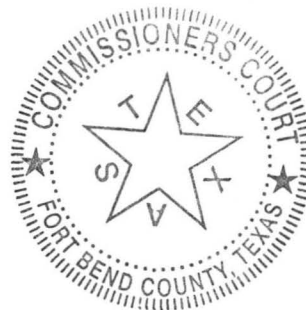
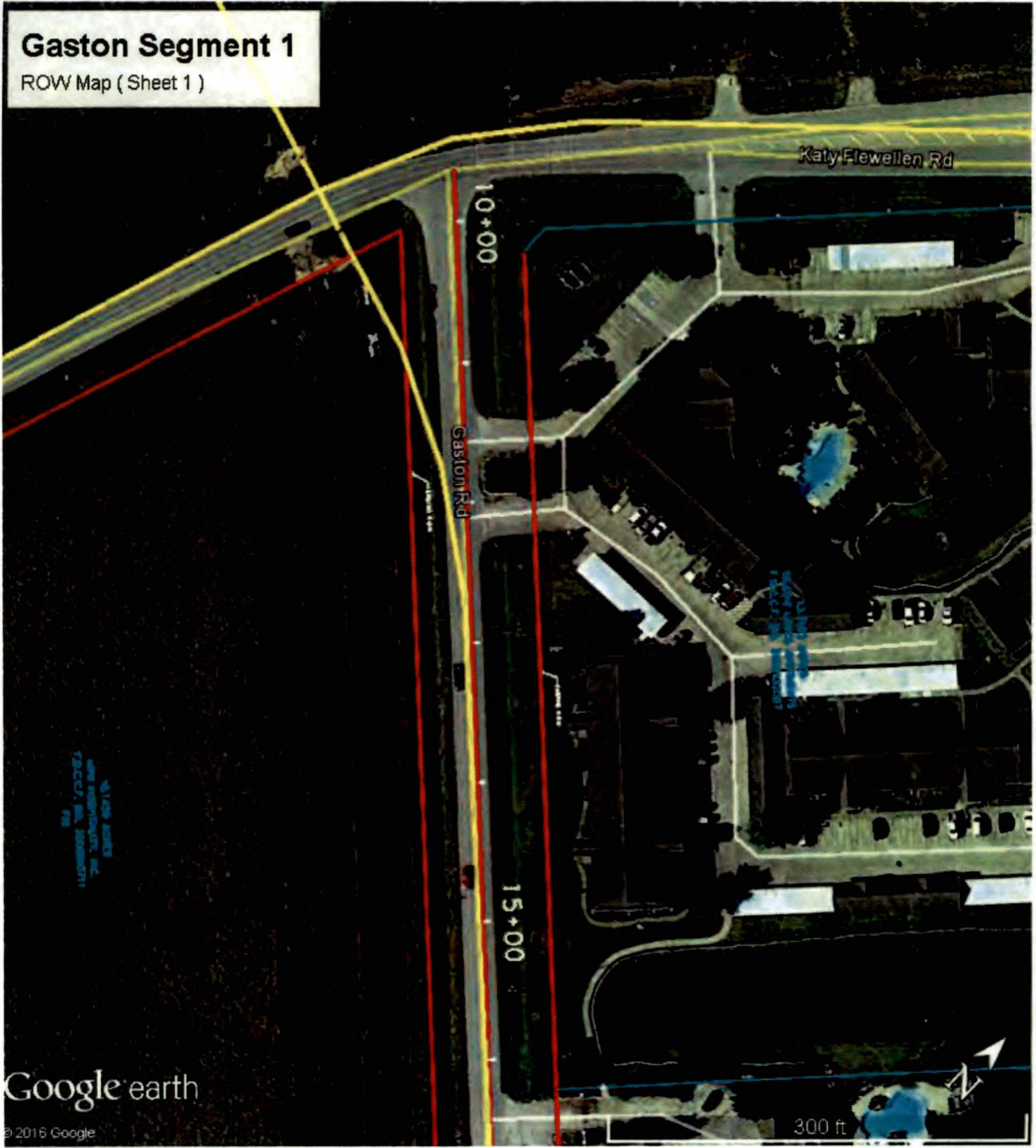


EXHIBIT A
(sheets 1 – 15)

Gaston Segment 1

ROW Map (Sheet 1)

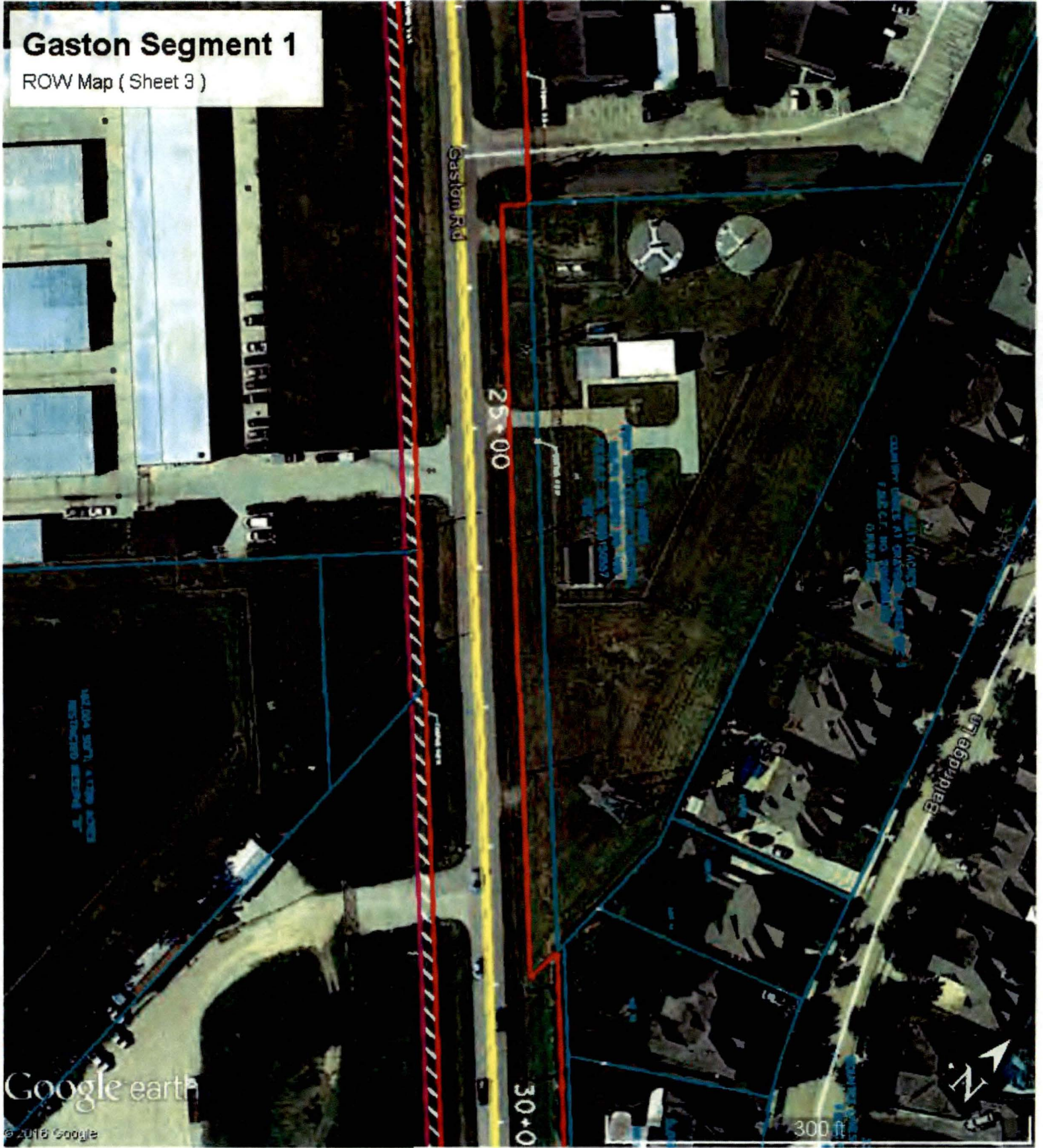


Google earth

© 2016 Google

Gaston Segment 1

ROW Map (Sheet 3)



Google earth

© 2016 Google

300 ft

25+00

30+00

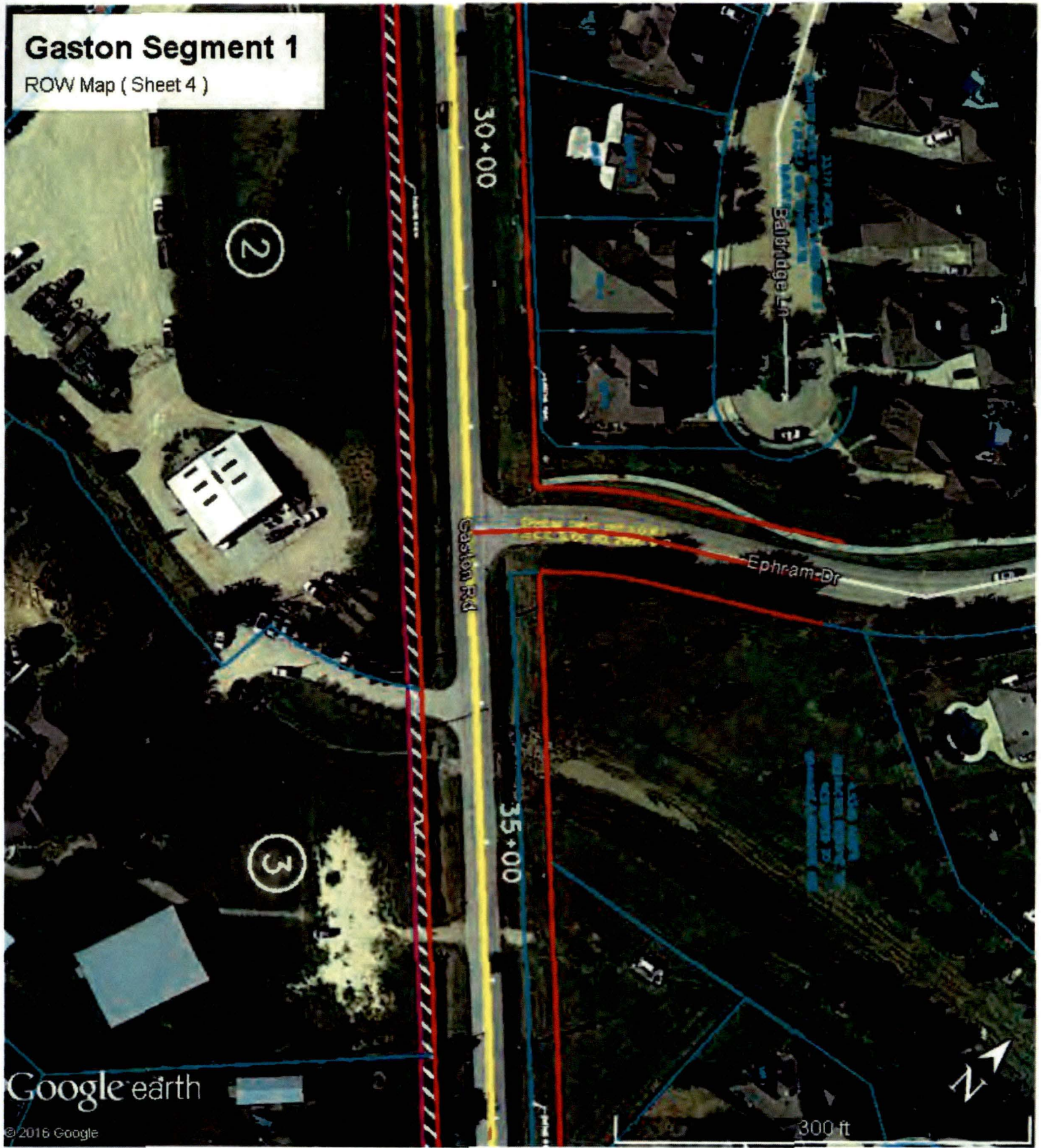
Baldridge Ln

Gaston Rd



Gaston Segment 1

ROW Map (Sheet 4)

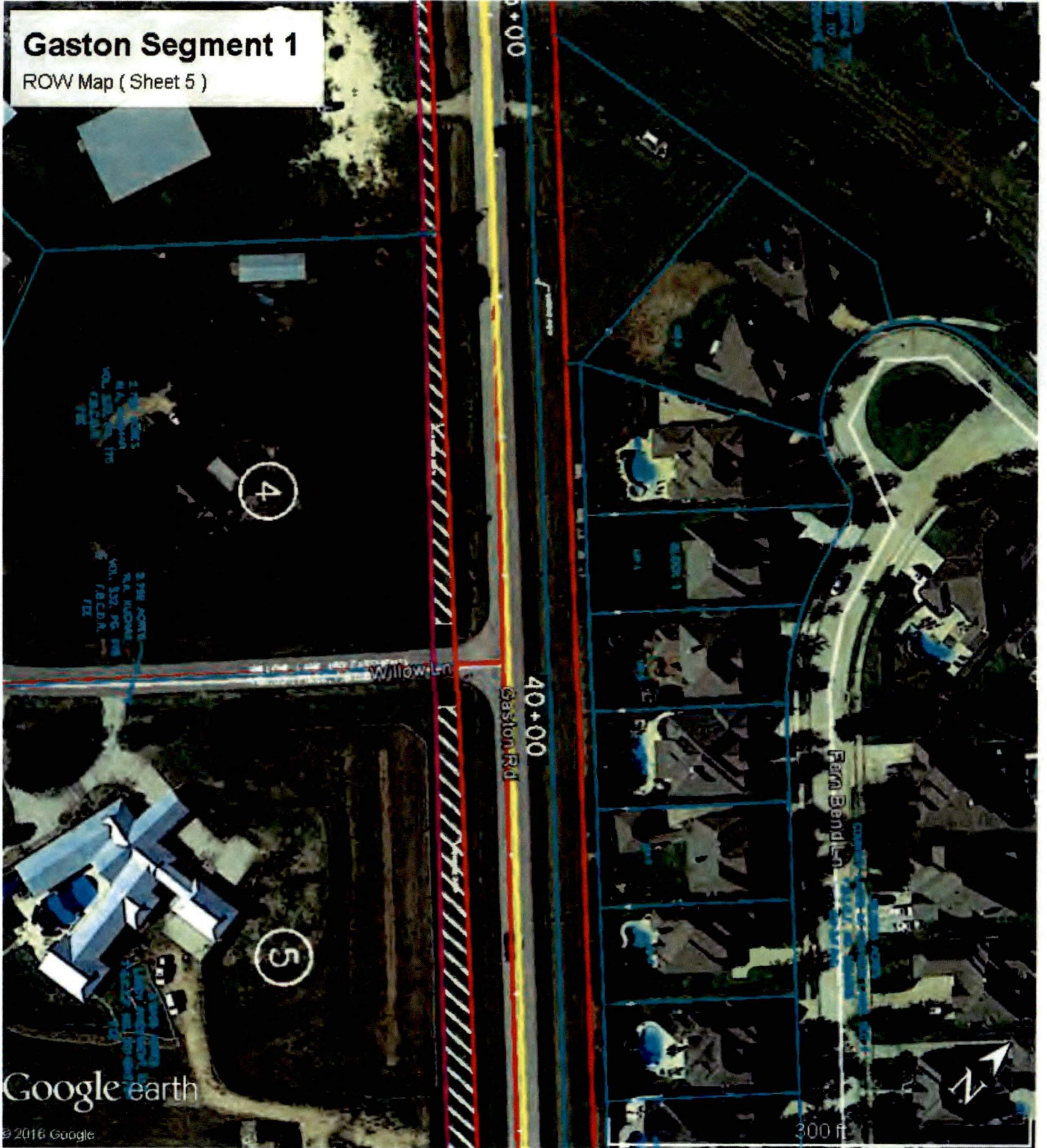


Google earth

© 2016 Google

Gaston Segment 1

ROW Map (Sheet 5)



Google earth

© 2016 Google

300 ft

Gaston Segment 1

ROW Map (Sheet 6)



Google earth

© 2018 Google

Gaston Segment 1

ROW Map (Sheet 7)

7

8

50+00

55+00

Gaston Rd

Mossy Path Ln

Google earth

© 2016 Google

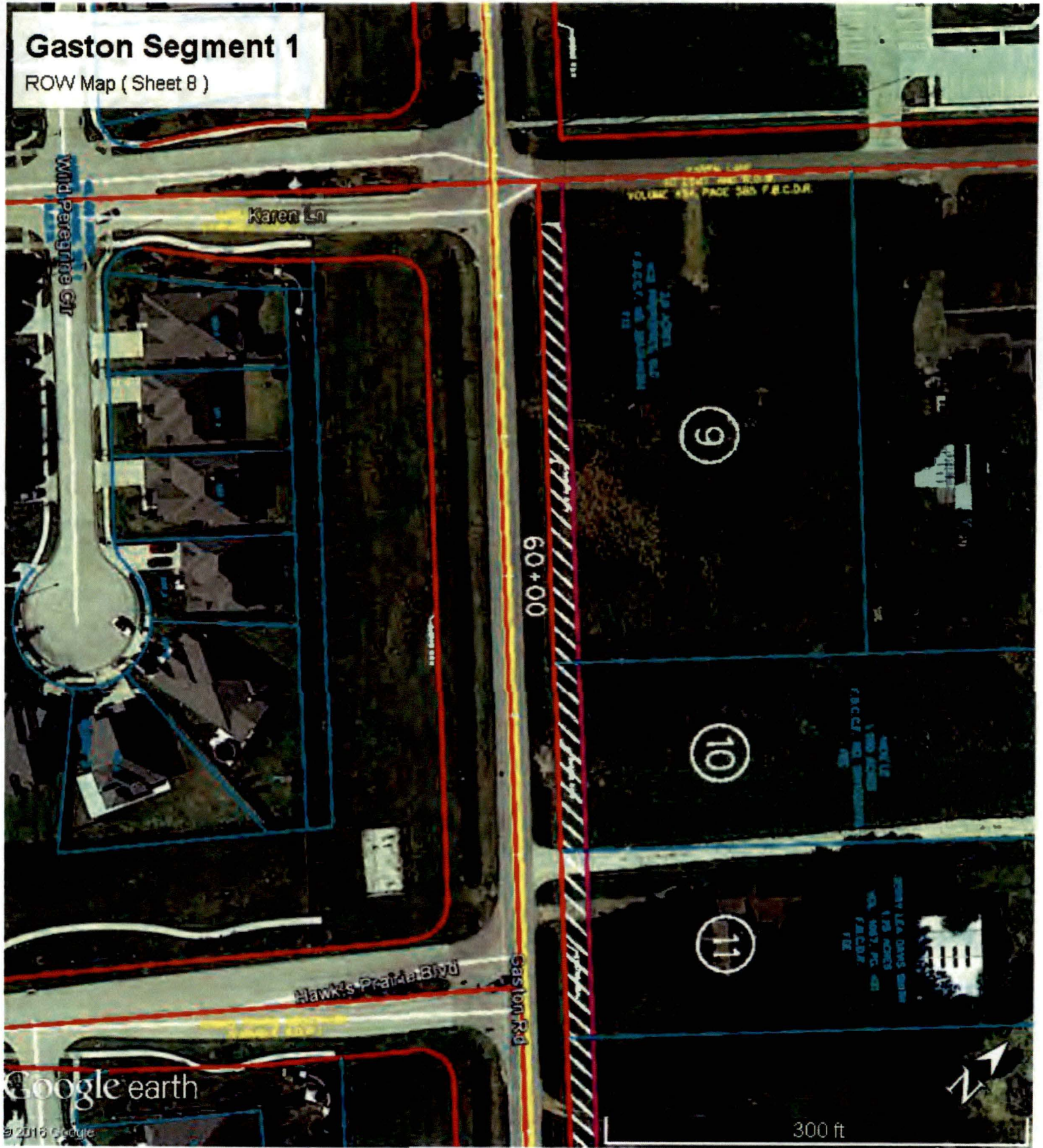
Karen Ln

4.1600' L. LINE
50' ASSET - JUNE 2016
VCE LINE 4.30', PAGE 585, 300.4ft



Gaston Segment 1

ROW Map (Sheet 8)



Google earth

© 2016 Google

300 ft

Gaston Segment 1

ROW Map (Sheet 9)

Hawk's Prairie Blvd

HARBOR Ct

65+00

GASTON Rd

Tina Ln

70

300 ft

11

12

13

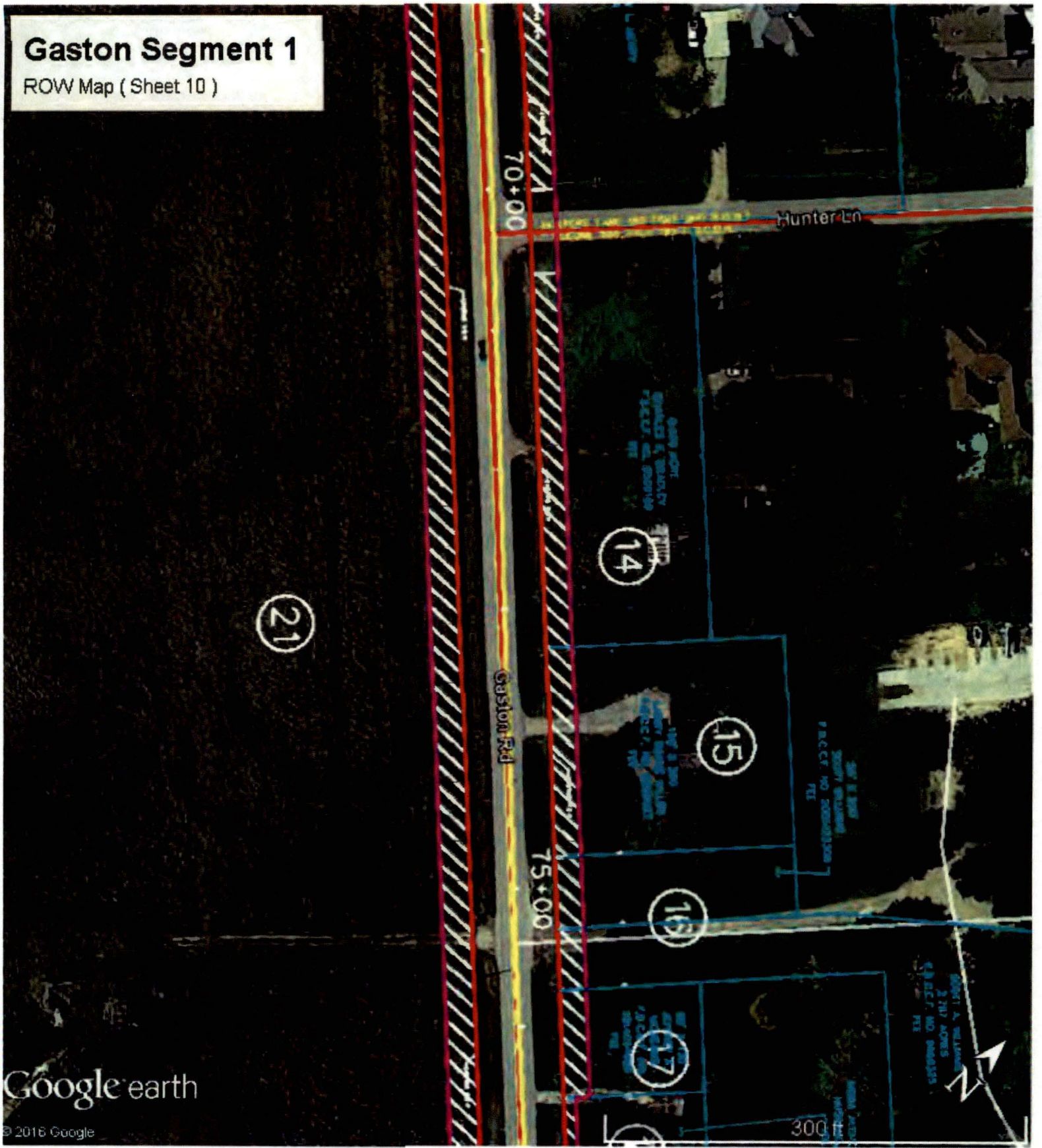
BERRY L & DAVIS SURVEY
1.78 ACRES
VOL. 5007, P. 481
P.M.C.D.M.
1988

LAND LOTS
1.00 ACRES
VOL. 5007, P. 481
P.M.C.D.M.
1988

1.00 ACRES
VOL. 5007, P. 481
P.M.C.D.M.
1988

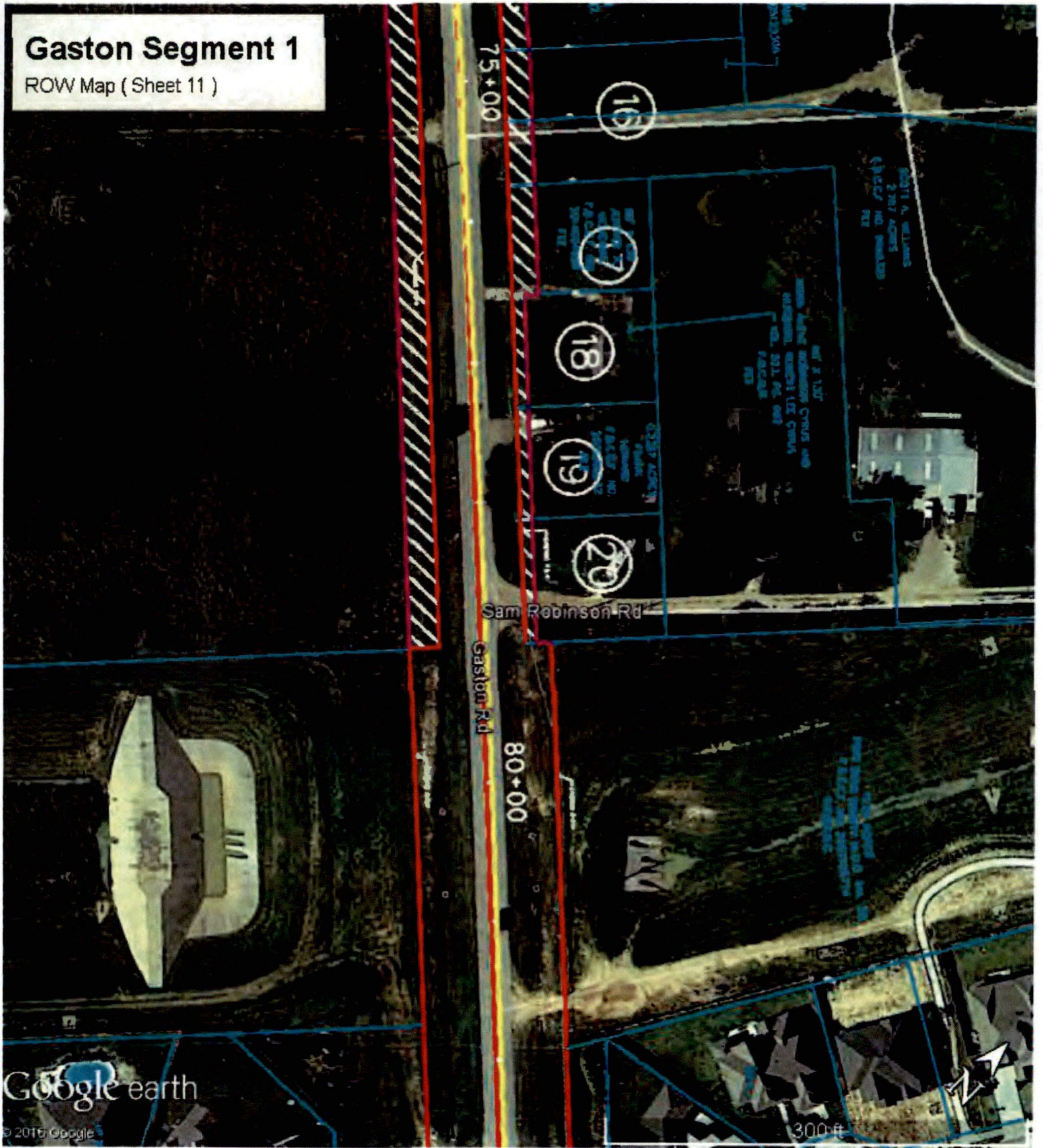
Gaston Segment 1

ROW Map (Sheet 10)



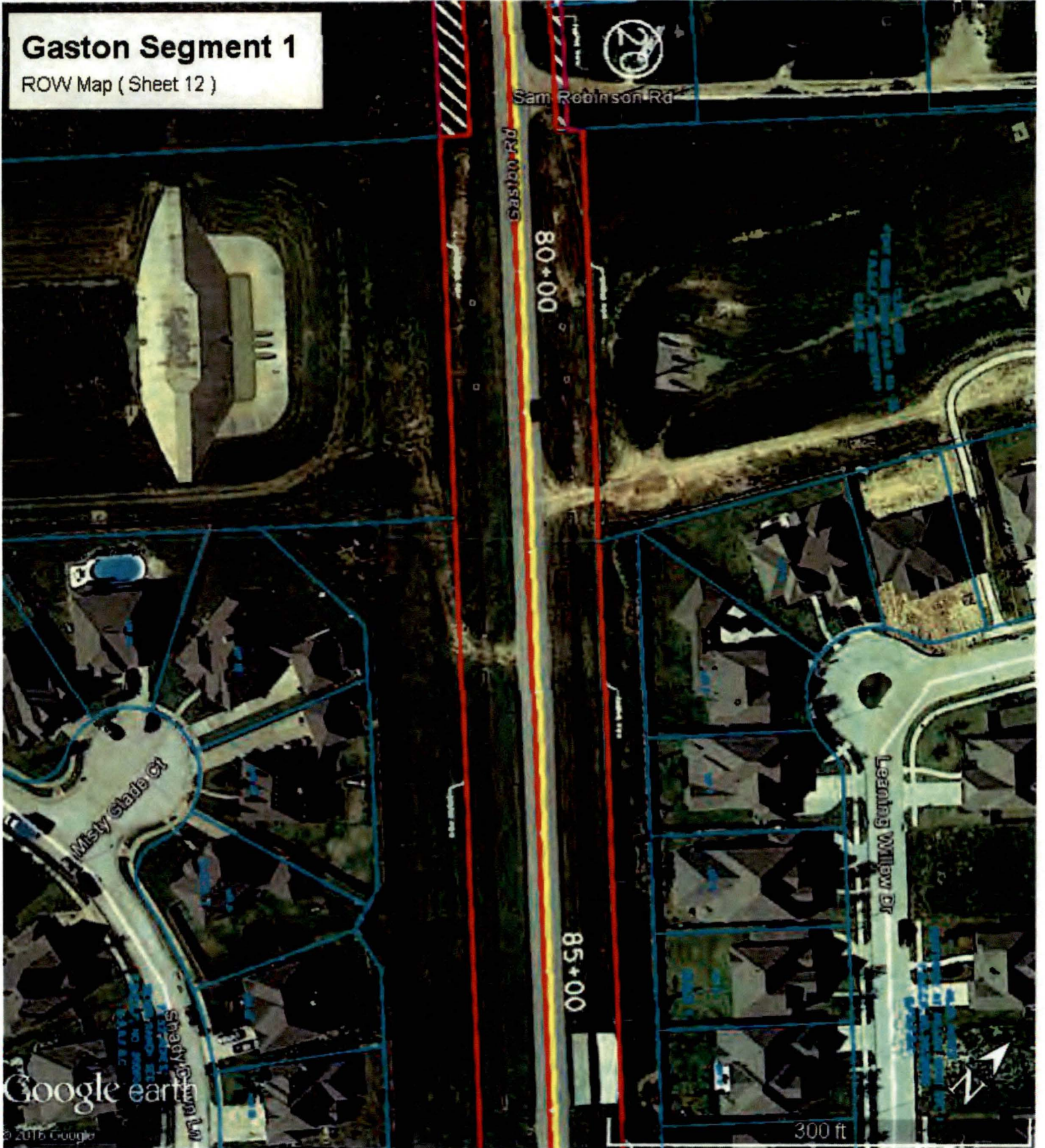
Gaston Segment 1

ROW Map (Sheet 11)



Gaston Segment 1

ROW Map (Sheet 12)



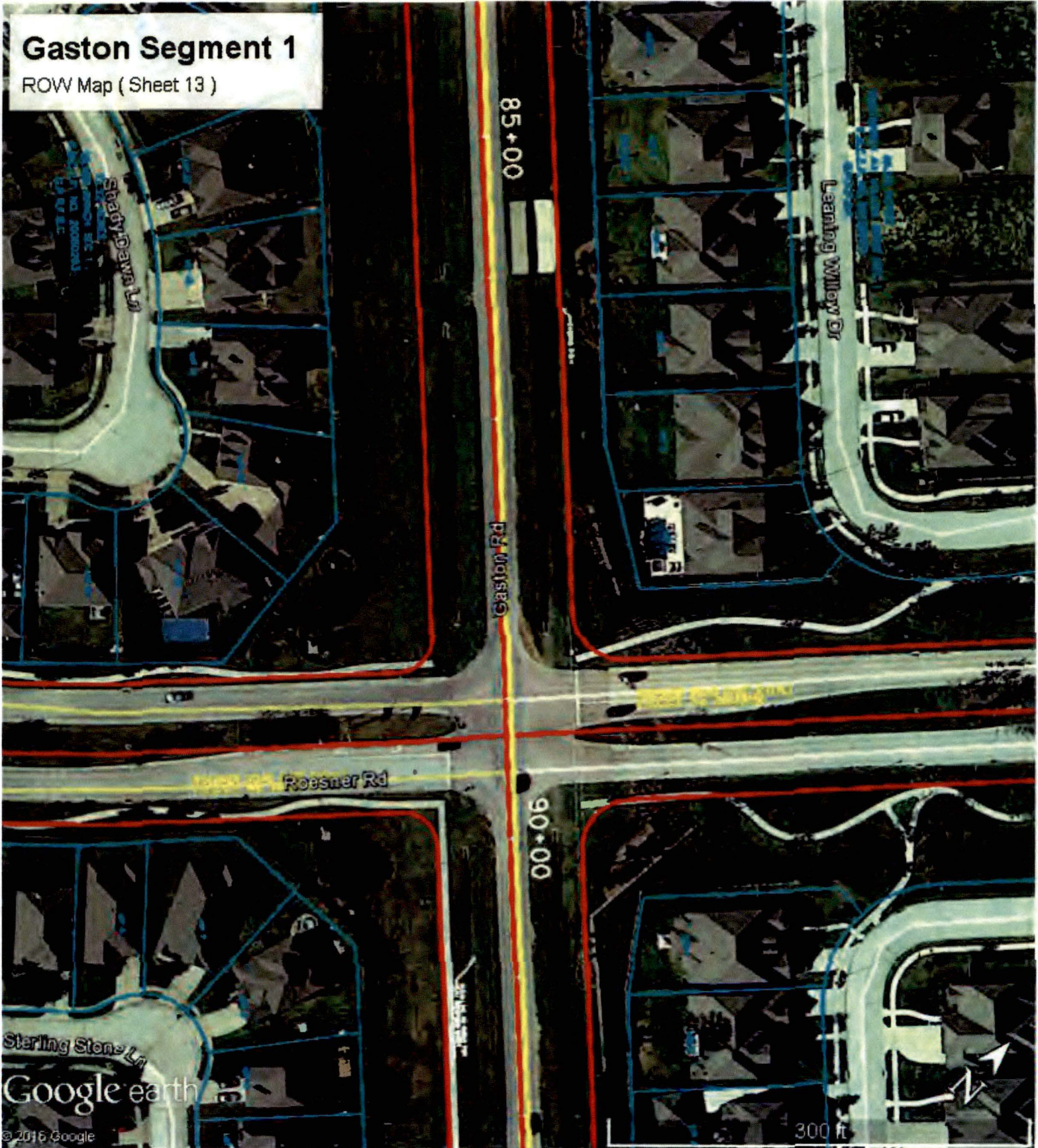
Google earth

© 2015 Google

300 ft

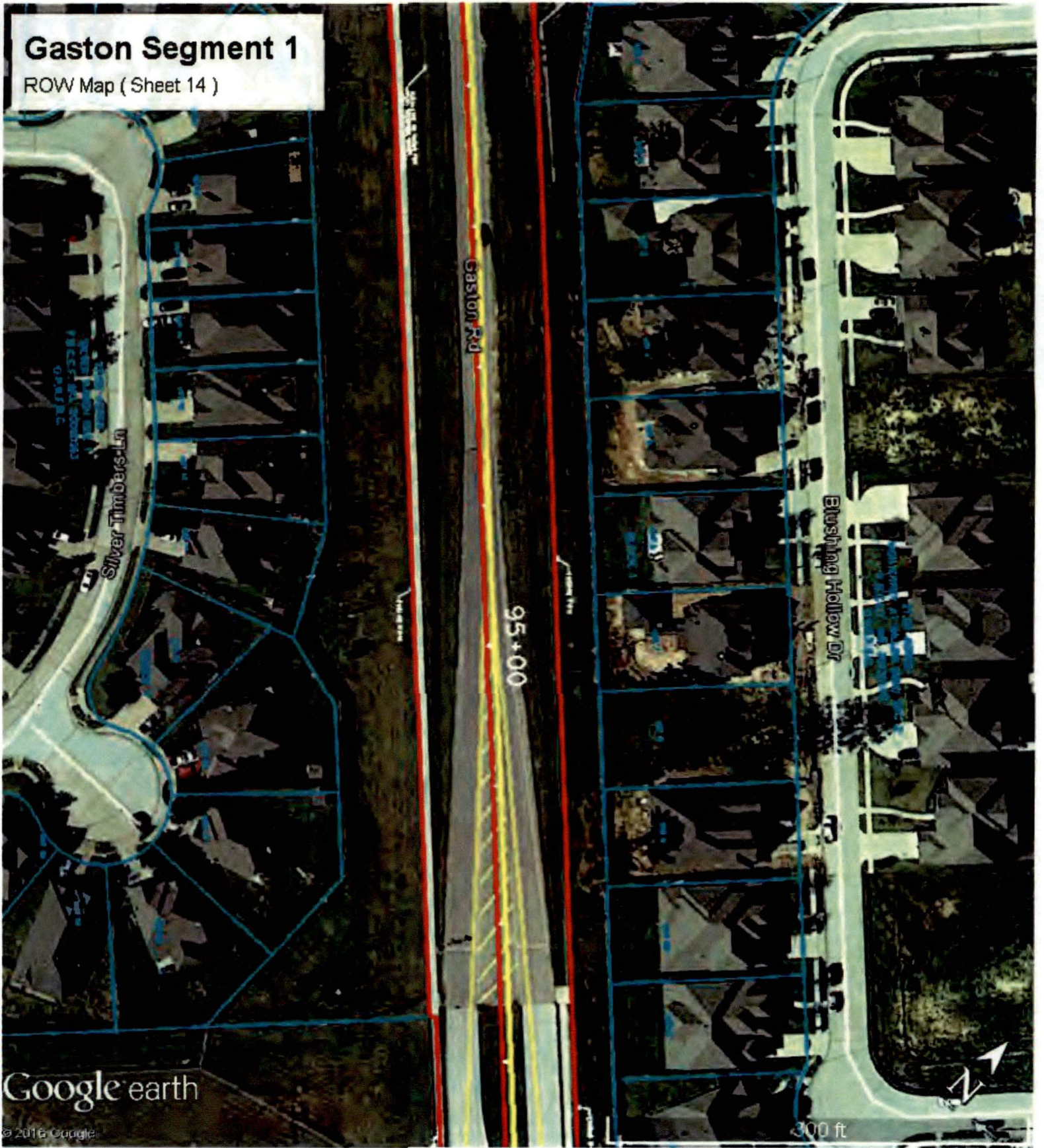
Gaston Segment 1

ROW Map (Sheet 13)



Gaston Segment 1

ROW Map (Sheet 14)



Google earth

© 2016 Google

Gaston Segment 1

ROW Map (Sheet 15)



Google earth

© 2015 Google

300 ft