

REVIEW BY FORT BEND COUNTY COMMISSIONERS COURT

On this 12th day of July, 2016, Commissioners Court came on to be heard and reviewed the accompanying notice of CenterPoint Energy

Job Location 18900 W. Bellfort St, Richmond, TX 77407

Date 6/27/2016 Bond No. 22-022-417, Permit No. 2016-8036 to make use of certain Fort Bend County property subject to, "A Revised Order Regulating the Laying, Construction, Maintenance, and Repair of Buried Cables, Conduits, and Pole Lines, In, Under, Across or Along Roads, Streets, Highways, and Drainage Ditches in Fort Bend County, Texas, Under the Jurisdiction of the Commissioners Court of Fort Bend County, Texas," as passed by the Commissioners Court of Fort Bend County, Texas the 3rd day of August, 1987, recorded in Volume _____ of the Minutes of the Commissioners Court of Fort Bend County, Texas, to the extent that such order is not inconsistent with Article 1436a, Vernon's Texas Civil Statutes. Upon Motion of Commissioner Meyers, seconded by Commissioner Pattern, duly put and carried, it is ORDERED, ADJUDGED AND DECREED that said notice of said above purpose is hereby acknowledged by the Commissioners Court of Fort Bend County, Texas, and that said notice be placed on record according to the regulation order thereof.

Notes:

1. Evidence of review by the Commissioners Court must be kept on the job site and failure to do so constitutes grounds for job shutdown.
2. Written notices are required:
 - a. 48 hours in advance of construction start up, and
 - b. when construction is completed and ready for final inspection

Mail notices to: Permit Administrator
Fort Bend County Engineering
301 Jackson Street
Richmond, Texas 77469
281-633-7500
3. This permit expires one (1) year from date of permit if construction has not commenced.

By: _____

for County Engineer

N/A

By: _____

Drainage District Engineer/Manager

Presented to Commissioners Court and approved.

Recorded in Volume
7-12-16 12W
Minutes of Commissioners Court

Clerk of Commissioners Court

By: _____

Deputy

County of Fort Bend

Engineering Department

301 Jackson Street
Richmond, Texas 77469

Johnny Ortega
Permit Administrator

Phone: (281) 633-7500

Permit Application Review Form For Cable, Conduit, and Pole Line Activity In Fort Bend County

Permit No. 2016-8036

The following "Notice of Proposed Cable, Conduit, and/or Pole Line activity in Fort Bend County" and accompanying attachments have been reviewed and the notice conforms to appropriate regulations set by Commissioner's Court of Fort Bend County, Texas.

- (1) Complete Application Form:
 - a. Name of road, street, and/or drainage ditch affected.
 - b. Vicinity map showing course of directions
 - c. Plans and specifications
- (2) Bond:
 - District Attorney, approval when applicable.
 - Perpetual bond currently posted.
 - No: 22-022-417
 - Amount: \$50,000.00
 - Performance bond submitted.
 - No: _____
 - Amount: _____
 - Cashier's Check
 - No: _____
 - Amount: _____

(3) Verbal permission given for emergencies, to start construction before approved in Commissioner's Court.

Precinct Engineer Acknowledgment _____
Date

Precinct Commissioner Acknowledgment _____
Date

(4)

Drainage District Approval when applicable

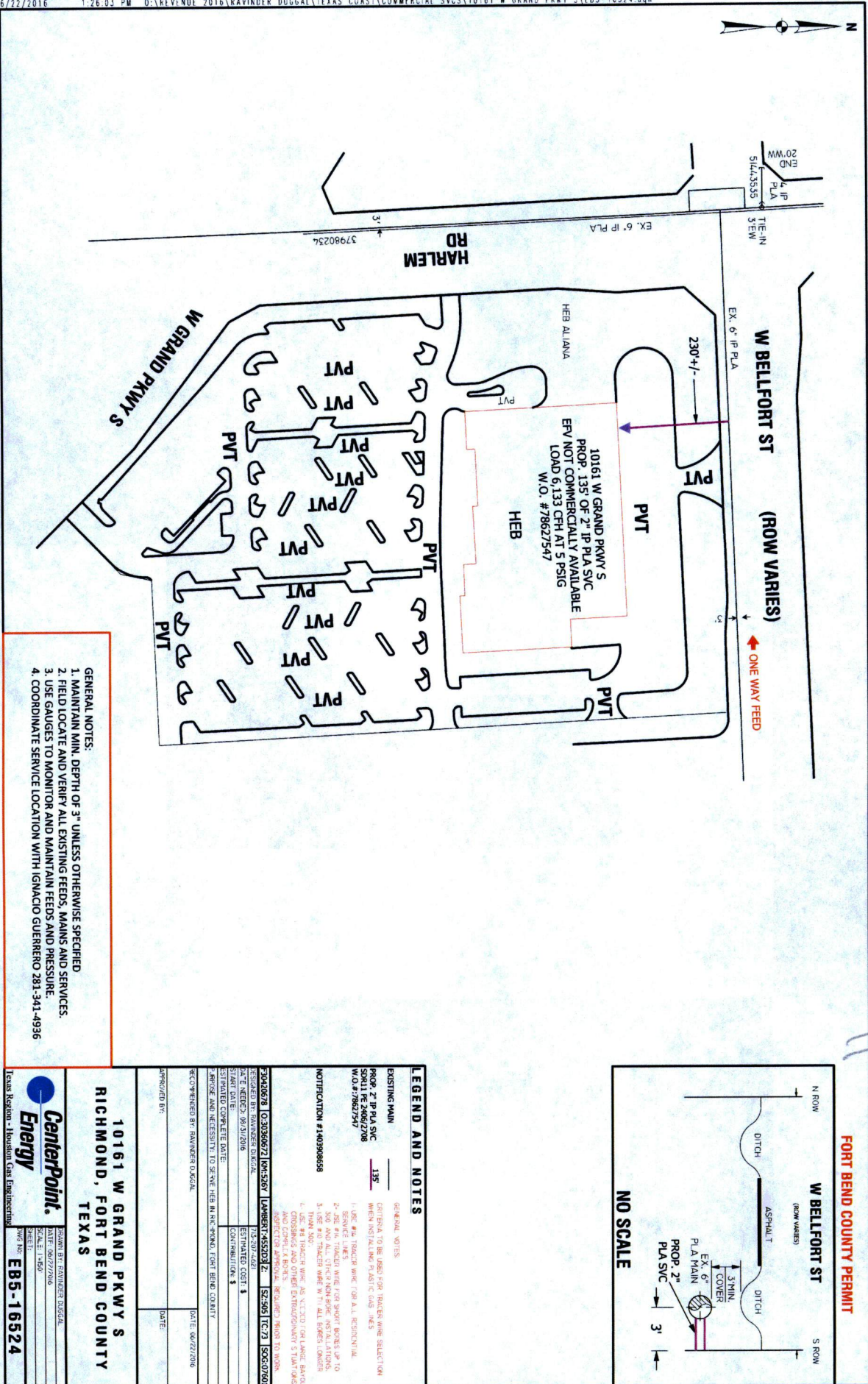
We have reviewed this project and agree it meets minimum requirements.



Johnny Ortega CFM/Permit Administrator

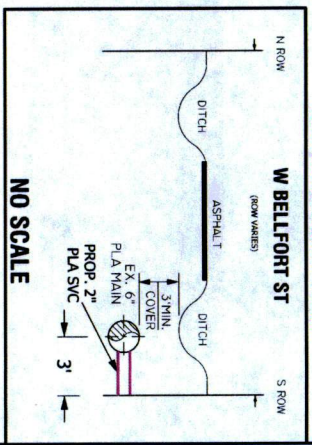


Date



GENERAL NOTES:
 1. MAINTAIN MIN. DEPTH OF 3" UNLESS OTHERWISE SPECIFIED
 2. FIELD LOCATE AND VERIFY ALL EXISTING FEEDS, MAINS AND SERVICES.
 3. USE GAUGES TO MONITOR AND MAINTAIN FEEDS AND PRESSURE.
 4. COORDINATE SERVICE LOCATION WITH IGNACIO GUERRERO 281-341-4936

APP-81655



LEGEND AND NOTES	
EXISTING MAIN	GENERAL NOTES
PROP. 2" IP PLA SVC	(CRITERIA TO BE USED FOR TRENCH WIRE SELECTION WHEN INSTALLING PLASTIC CUB. IN.)
PROP. 1 1/2" IP PLA SVC	1. USE #14 TRENCH WIRE FOR ALL RESIDENTIAL
PROP. 1" IP PLA SVC	2. USE #16 TRENCH WIRE FOR SHOUT BONES UP TO 3' DEEP AND #18 TRENCH WIRE FOR ALL OTHERS
PROP. 3/4" IP PLA SVC	3. USE #18 TRENCH WIRE FOR ALL OTHERS
PROP. 1/2" IP PLA SVC	4. USE #18 TRENCH WIRE AS V.T.C.O. FOR LARGE SERVICES AND CONDUIT & BONES
PROP. 1/4" IP PLA SVC	NOTICE: APPROVAL REQUIRED PRIOR TO WORK
PROP. 1/8" IP PLA SVC	
PROP. 1/4" IP PLA SVC	
PROP. 1/2" IP PLA SVC	
PROP. 3/4" IP PLA SVC	
PROP. 1" IP PLA SVC	
PROP. 1 1/2" IP PLA SVC	
PROP. 2" IP PLA SVC	
PROP. 3" IP PLA SVC	
PROP. 4" IP PLA SVC	
PROP. 6" IP PLA SVC	
PROP. 8" IP PLA SVC	
PROP. 10" IP PLA SVC	
PROP. 12" IP PLA SVC	
PROP. 14" IP PLA SVC	
PROP. 16" IP PLA SVC	
PROP. 18" IP PLA SVC	
PROP. 20" IP PLA SVC	
PROP. 24" IP PLA SVC	
PROP. 30" IP PLA SVC	
PROP. 36" IP PLA SVC	
PROP. 42" IP PLA SVC	
PROP. 48" IP PLA SVC	
PROP. 54" IP PLA SVC	
PROP. 60" IP PLA SVC	
PROP. 72" IP PLA SVC	
PROP. 84" IP PLA SVC	
PROP. 96" IP PLA SVC	
PROP. 108" IP PLA SVC	
PROP. 120" IP PLA SVC	
PROP. 144" IP PLA SVC	
PROP. 168" IP PLA SVC	
PROP. 192" IP PLA SVC	
PROP. 216" IP PLA SVC	
PROP. 240" IP PLA SVC	
PROP. 270" IP PLA SVC	
PROP. 300" IP PLA SVC	
PROP. 324" IP PLA SVC	
PROP. 348" IP PLA SVC	
PROP. 372" IP PLA SVC	
PROP. 396" IP PLA SVC	
PROP. 420" IP PLA SVC	
PROP. 444" IP PLA SVC	
PROP. 468" IP PLA SVC	
PROP. 492" IP PLA SVC	
PROP. 516" IP PLA SVC	
PROP. 540" IP PLA SVC	
PROP. 564" IP PLA SVC	
PROP. 588" IP PLA SVC	
PROP. 612" IP PLA SVC	
PROP. 636" IP PLA SVC	
PROP. 660" IP PLA SVC	
PROP. 684" IP PLA SVC	
PROP. 708" IP PLA SVC	
PROP. 732" IP PLA SVC	
PROP. 756" IP PLA SVC	
PROP. 780" IP PLA SVC	
PROP. 804" IP PLA SVC	
PROP. 828" IP PLA SVC	
PROP. 852" IP PLA SVC	
PROP. 876" IP PLA SVC	
PROP. 900" IP PLA SVC	
PROP. 924" IP PLA SVC	
PROP. 948" IP PLA SVC	
PROP. 972" IP PLA SVC	
PROP. 996" IP PLA SVC	
PROP. 1020" IP PLA SVC	
PROP. 1044" IP PLA SVC	
PROP. 1068" IP PLA SVC	
PROP. 1092" IP PLA SVC	
PROP. 1116" IP PLA SVC	
PROP. 1140" IP PLA SVC	
PROP. 1164" IP PLA SVC	
PROP. 1188" IP PLA SVC	
PROP. 1212" IP PLA SVC	
PROP. 1236" IP PLA SVC	
PROP. 1260" IP PLA SVC	
PROP. 1284" IP PLA SVC	
PROP. 1308" IP PLA SVC	
PROP. 1332" IP PLA SVC	
PROP. 1356" IP PLA SVC	
PROP. 1380" IP PLA SVC	
PROP. 1404" IP PLA SVC	
PROP. 1428" IP PLA SVC	
PROP. 1452" IP PLA SVC	
PROP. 1476" IP PLA SVC	
PROP. 1500" IP PLA SVC	
PROP. 1524" IP PLA SVC	
PROP. 1548" IP PLA SVC	
PROP. 1572" IP PLA SVC	
PROP. 1596" IP PLA SVC	
PROP. 1620" IP PLA SVC	
PROP. 1644" IP PLA SVC	
PROP. 1668" IP PLA SVC	
PROP. 1692" IP PLA SVC	
PROP. 1716" IP PLA SVC	
PROP. 1740" IP PLA SVC	
PROP. 1764" IP PLA SVC	
PROP. 1788" IP PLA SVC	
PROP. 1812" IP PLA SVC	
PROP. 1836" IP PLA SVC	
PROP. 1860" IP PLA SVC	
PROP. 1884" IP PLA SVC	
PROP. 1908" IP PLA SVC	
PROP. 1932" IP PLA SVC	
PROP. 1956" IP PLA SVC	
PROP. 1980" IP PLA SVC	
PROP. 2004" IP PLA SVC	
PROP. 2028" IP PLA SVC	
PROP. 2052" IP PLA SVC	
PROP. 2076" IP PLA SVC	
PROP. 2100" IP PLA SVC	
PROP. 2124" IP PLA SVC	
PROP. 2148" IP PLA SVC	
PROP. 2172" IP PLA SVC	
PROP. 2196" IP PLA SVC	
PROP. 2220" IP PLA SVC	
PROP. 2244" IP PLA SVC	
PROP. 2268" IP PLA SVC	
PROP. 2292" IP PLA SVC	
PROP. 2316" IP PLA SVC	
PROP. 2340" IP PLA SVC	
PROP. 2364" IP PLA SVC	
PROP. 2388" IP PLA SVC	
PROP. 2412" IP PLA SVC	
PROP. 2436" IP PLA SVC	
PROP. 2460" IP PLA SVC	
PROP. 2484" IP PLA SVC	
PROP. 2508" IP PLA SVC	
PROP. 2532" IP PLA SVC	
PROP. 2556" IP PLA SVC	
PROP. 2580" IP PLA SVC	
PROP. 2604" IP PLA SVC	
PROP. 2628" IP PLA SVC	
PROP. 2652" IP PLA SVC	
PROP. 2676" IP PLA SVC	
PROP. 2700" IP PLA SVC	
PROP. 2724" IP PLA SVC	
PROP. 2748" IP PLA SVC	
PROP. 2772" IP PLA SVC	
PROP. 2796" IP PLA SVC	
PROP. 2820" IP PLA SVC	
PROP. 2844" IP PLA SVC	
PROP. 2868" IP PLA SVC	
PROP. 2892" IP PLA SVC	
PROP. 2916" IP PLA SVC	
PROP. 2940" IP PLA SVC	
PROP. 2964" IP PLA SVC	
PROP. 2988" IP PLA SVC	
PROP. 3012" IP PLA SVC	
PROP. 3036" IP PLA SVC	
PROP. 3060" IP PLA SVC	
PROP. 3084" IP PLA SVC	
PROP. 3108" IP PLA SVC	
PROP. 3132" IP PLA SVC	
PROP. 3156" IP PLA SVC	
PROP. 3180" IP PLA SVC	
PROP. 3204" IP PLA SVC	
PROP. 3228" IP PLA SVC	
PROP. 3252" IP PLA SVC	
PROP. 3276" IP PLA SVC	
PROP. 3300" IP PLA SVC	
PROP. 3324" IP PLA SVC	
PROP. 3348" IP PLA SVC	
PROP. 3372" IP PLA SVC	
PROP. 3396" IP PLA SVC	
PROP. 3420" IP PLA SVC	
PROP. 3444" IP PLA SVC	
PROP. 3468" IP PLA SVC	
PROP. 3492" IP PLA SVC	
PROP. 3516" IP PLA SVC	
PROP. 3540" IP PLA SVC	
PROP. 3564" IP PLA SVC	
PROP. 3588" IP PLA SVC	
PROP. 3612" IP PLA SVC	
PROP. 3636" IP PLA SVC	
PROP. 3660" IP PLA SVC	
PROP. 3684" IP PLA SVC	
PROP. 3708" IP PLA SVC	
PROP. 3732" IP PLA SVC	
PROP. 3756" IP PLA SVC	
PROP. 3780" IP PLA SVC	
PROP. 3804" IP PLA SVC	
PROP. 3828" IP PLA SVC	
PROP. 3852" IP PLA SVC	
PROP. 3876" IP PLA SVC	
PROP. 3900" IP PLA SVC	
PROP. 3924" IP PLA SVC	
PROP. 3948" IP PLA SVC	
PROP. 3972" IP PLA SVC	
PROP. 3996" IP PLA SVC	
PROP. 4020" IP PLA SVC	
PROP. 4044" IP PLA SVC	
PROP. 4068" IP PLA SVC	
PROP. 4092" IP PLA SVC	
PROP. 4116" IP PLA SVC	
PROP. 4140" IP PLA SVC	
PROP. 4164" IP PLA SVC	
PROP. 4188" IP PLA SVC	
PROP. 4212" IP PLA SVC	
PROP. 4236" IP PLA SVC	
PROP. 4260" IP PLA SVC	
PROP. 4284" IP PLA SVC	
PROP. 4308" IP PLA SVC	
PROP. 4332" IP PLA SVC	
PROP. 4356" IP PLA SVC	
PROP. 4380" IP PLA SVC	
PROP. 4404" IP PLA SVC	
PROP. 4428" IP PLA SVC	
PROP. 4452" IP PLA SVC	
PROP. 4476" IP PLA SVC	
PROP. 4500" IP PLA SVC	
PROP. 4524" IP PLA SVC	
PROP. 4548" IP PLA SVC	
PROP. 4572" IP PLA SVC	
PROP. 4596" IP PLA SVC	
PROP. 4620" IP PLA SVC	
PROP. 4644" IP PLA SVC	
PROP. 4668" IP PLA SVC	
PROP. 4692" IP PLA SVC	
PROP. 4716" IP PLA SVC	
PROP. 4740" IP PLA SVC	
PROP. 4764" IP PLA SVC	
PROP. 4788" IP PLA SVC	
PROP. 4812" IP PLA SVC	
PROP. 4836" IP PLA SVC	
PROP. 4860" IP PLA SVC	
PROP. 4884" IP PLA SVC	
PROP. 4908" IP PLA SVC	
PROP. 4932" IP PLA SVC	
PROP. 4956" IP PLA SVC	
PROP. 4980" IP PLA SVC	
PROP. 5004" IP PLA SVC	
PROP. 5028" IP PLA SVC	
PROP. 5052" IP PLA SVC	
PROP. 5076" IP PLA SVC	
PROP. 5100" IP PLA SVC	
PROP. 5124" IP PLA SVC	
PROP. 5148" IP PLA SVC	
PROP. 5172" IP PLA SVC	
PROP. 5196" IP PLA SVC	
PROP. 5220" IP PLA SVC	
PROP. 5244" IP PLA SVC	
PROP. 5268" IP PLA SVC	
PROP. 5292" IP PLA SVC	
PROP. 5316" IP PLA SVC	
PROP. 5340" IP PLA SVC	
PROP. 5364" IP PLA SVC	
PROP. 5388" IP PLA SVC	
PROP. 5412" IP PLA SVC	
PROP. 5436" IP PLA SVC	
PROP. 5460" IP PLA SVC	
PROP. 5484" IP PLA SVC	
PROP. 5508" IP PLA SVC	
PROP. 5532" IP PLA SVC	
PROP. 5556" IP PLA SVC	
PROP. 5580" IP PLA SVC	
PROP. 5604" IP PLA SVC	
PROP. 5628" IP PLA SVC	
PROP. 5652" IP PLA SVC	
PROP. 5676" IP PLA SVC	
PROP. 5700" IP PLA SVC	
PROP. 5724" IP PLA SVC	
PROP. 5748" IP PLA SVC	
PROP. 5772" IP PLA SVC	
PROP. 5796" IP PLA SVC	
PROP. 5820" IP PLA SVC	
PROP. 5844" IP PLA SVC	
PROP. 5868" IP PLA SVC	
PROP. 5892" IP PLA SVC	
PROP. 5916" IP PLA SVC	
PROP. 5940" IP PLA SVC	
PROP. 5964" IP PLA SVC	
PROP. 5988" IP PLA SVC	
PROP. 6012" IP PLA SVC	
PROP. 6036" IP PLA SVC	
PROP. 6060" IP PLA SVC	
PROP. 6084" IP PLA SVC	
PROP. 6108" IP PLA SVC	
PROP. 6132" IP PLA SVC	
PROP. 6156" IP PLA SVC	
PROP. 6180" IP PLA SVC	
PROP. 6204" IP PLA SVC	
PROP. 6228" IP PLA SVC	
PROP. 6252" IP PLA SVC	
PROP. 6276" IP PLA SVC	
PROP. 6300" IP PLA SVC	
PROP. 6324" IP PLA SVC	
PROP. 6348" IP PLA SVC	
PROP. 6372" IP PLA SVC	
PROP. 6396" IP PLA SVC	
PROP. 6420" IP PLA SVC	
PROP. 6444" IP PLA SVC	
PROP. 6468" IP PLA SVC	
PROP. 6492" IP PLA SVC	
PROP. 6516" IP PLA SVC	
PROP. 6540" IP PLA SVC	
PROP. 6564" IP PLA SVC	
PROP. 6588" IP PLA SVC	
PROP. 6612" IP PLA SVC	
PROP. 6636" IP PLA SVC	
PROP. 6660" IP PLA SVC	
PROP. 6684" IP PLA SVC	
PROP. 6708" IP PLA SVC	
PROP. 6732" IP PLA SVC	
PROP. 6756" IP PLA SVC	
PROP. 6780" IP PLA SVC	
PROP. 6804" IP PLA SVC	
PROP. 6828" IP PLA SVC	
PROP. 6852" IP PLA SVC	
PROP. 6876" IP PLA SVC	
PROP. 6900" IP PLA SVC	
PROP. 6924" IP PLA SVC	
PROP. 6948" IP PLA SVC	
PROP. 6972" IP PLA SVC	
PROP. 6996" IP PLA SVC	
PROP. 7020" IP PLA SVC	
PROP. 7044" IP PLA SVC	
PROP. 7068" IP PLA SVC	
PROP. 7092" IP PLA SVC	
PROP. 7116" IP PLA SVC	
PROP. 7140" IP PLA SVC	
PROP. 7164" IP PLA SVC	
PROP. 7188" IP PLA SVC	
PROP. 7212" IP PLA SVC	
PROP. 7236" IP PLA SVC	
PROP. 7260" IP PLA SVC	
PROP. 7284" IP PLA SVC	
PROP. 7308" IP PLA SVC	
PROP. 7332" IP PLA SVC	
PROP. 7356" IP PLA SVC	
PROP. 7380" IP PLA SVC	
PROP. 7404" IP PLA SVC	
PROP. 7428" IP PLA SVC	
PROP. 7452" IP PLA SVC	
PROP. 7476" IP PLA SVC	
PROP. 7500" IP PLA SVC	
PROP. 7524" IP PLA SVC	
PROP. 7548" IP PLA SVC	
PROP. 7572" IP PLA SVC	
PROP. 7596" IP PLA SVC	
PROP. 7620" IP PLA SVC	
PROP. 7644" IP PLA SVC	
PROP. 7668" IP PLA SVC	
PROP. 7692" IP PLA SVC	
PROP. 7716" IP PLA SVC	
PROP. 7740" IP PLA SVC	
PROP. 7764" IP PLA SVC	
PROP. 7788" IP PLA SVC	
PROP. 7812" IP PLA SVC	
PROP. 7836" IP PLA SVC	
PROP. 7860" IP PLA SVC	
PROP. 7884" IP PLA SVC	
PROP. 7908" IP PLA SVC	
PROP. 7932" IP PLA SVC	
PROP. 7956" IP PLA SVC	
PROP. 7980" IP PLA SVC	
PROP. 8004" IP PLA SVC	
PROP. 8028" IP PLA SVC	
PROP. 8052" IP PLA SVC	
PROP. 8076" IP PLA SVC	
PROP. 8100" IP PLA SVC	
PROP. 8124" IP PLA SVC	
PROP. 8148" IP PLA SVC	
PROP. 8172" IP PLA SVC	
PROP. 8196" IP PLA SVC	
PROP. 8220" IP PLA SVC	
PROP. 8244" IP PLA SVC	
PROP. 8268" IP PLA SVC	
PROP. 8292" IP PLA SVC	
PROP. 8316" IP PLA SVC	
PROP. 8340" IP PLA SVC	
PROP. 8364" IP PLA SVC	
PROP. 8388" IP PLA SVC	
PROP. 8412" IP PLA SVC	
PROP. 8436" IP PLA SVC	
PROP. 8460" IP PLA SVC	
PROP. 8484" IP PLA SVC	
PROP. 8508" IP PLA SVC	
PROP. 8532" IP PLA SVC	
PROP. 8556" IP PLA SVC	
PROP. 8580" IP PLA SVC	
PROP. 8604" IP PLA SVC	
PROP. 8628" IP PLA SVC	
PROP. 8652" IP PLA SVC	
PROP. 8676" IP PLA SVC	
PROP. 8700" IP PLA SVC	
PROP. 8724" IP PLA SVC	
PROP. 8748" IP PLA SVC	
PROP. 8772" IP PLA SVC	
PROP. 8796" IP PLA SVC	
PROP. 8820" IP PLA SVC	
PROP. 8844" IP PLA SVC	
PROP. 8868" IP PLA SVC	
PROP. 8892" IP PLA SVC	
PROP. 8916" IP PLA SVC	
PROP. 8940" IP PLA SVC	
PROP. 8964" IP PLA SVC	
PROP. 89	