

## REVIEW BY FORT BEND COUNTY COMMISSIONERS COURT

On this 24th day of May, 2016, Commissioners Court came on to be heard and reviewed the accompanying notice of Salvador Guerra / W.W. Payton Corporation  
 Job Location 10855 1/2 W. Aliana Trace Dr., Richmond, TX 77407  
 Date 4/19/2016 Bond No. 46BSBGJ8123, Permit No. 2016-6557 to make use of certain Fort Bend County property subject to, "A Revised Order Regulating the Laying, Construction, Maintenance, and Repair of Buried Cables, Conduits, and Pole Lines, In, Under, Across or Along Roads, Streets, Highways, and Drainage Ditches in Fort Bend County, Texas, Under the Jurisdiction of the Commissioners Court of Fort Bend County, Texas," as passed by the Commissioners Court of Fort Bend County, Texas the 3rd day of August, 1987, recorded in Volume \_\_\_\_\_ of the Minutes of the Commissioners Court of Fort Bend County, Texas, to the extent that such order is not inconsistent with Article 1436a, Vernon's Texas Civil Statutes. Upon Motion of Commissioner Meyers, seconded by Commissioner Patterson, duly put and carried, it is ORDERED, ADJUDGED AND DECREED that said notice of said above purpose is hereby acknowledged by the Commissioners Court of Fort Bend County, Texas, and that said notice be placed on record according to the regulation order thereof.

### Notes:

1. Evidence of review by the Commissioners Court must be kept on the job site and failure to do so constitutes grounds for job shutdown.
2. Written notices are required:
  - a. 48 hours in advance of construction start up, and
  - b. when construction is completed and ready for final inspection
 Mail notices to: Permit Administrator  
 Fort Bend County Engineering  
 301 Jackson Street  
 Richmond, Texas 77469  
 281-633-7500
3. This permit expires one (1) year from date of permit if construction has not commenced.

By: Charles O. Duff  
 for County Engineer

Presented to Commissioners Court and approved.

Recorded in Volume  
5-24-16 13C  
 Minutes of Commissioners Court

By: N/A  
 Drainage District Engineer/Manager

Clerk of Commissioners Court

By: Amelia Wilkes  
 Deputy



**PERFORMANCE BOND COVERING ALL CABLE, CONDUIT AND/OR POLE LINE  
ACTIVITY IN, UNDER, ACROSS OR ALONG FORT BEND COUNTY ROAD**

AUTHORIZED

BOND NO 46BSBGJ8123

THE STATE OF TEXAS

§

KNOW ALL MEN BY THESE PRESENTS:

COUNTY OF FORT BEND

§

THAT WE, W. W. Payton Corporation whose address is P.O. Box 1056, Katy, TX 77492-1056 Texas, hereinafter called the Principal, And Hartford Casualty Insurance Company, a Corporation existing under and by virtue of the laws of the state of Indiana and authorized to do an indemnifying business in the state of Texas, and whose principal office is located at Hartford, Connecticut, whose officer residing in the State of Texas, authorized to accept service in all suits and actions brought whining said state is Michael Heidrick and Whose address is Hartford, 3000 Internet Blvd., #600, Frisco, TX 75034, hereinafter called the Surety, and held and firmly bound unto, Robert e. Hebert, County Judge of Fort Bend County, Texas, or his successors in office, in the full sum of Five Thousand and No/100----- Dollars (\$ 5,000.00 ) current, lawful money of the United States of America, to be paid to said Robert E. Hebert, County Judge of Fort Bend County, Texas, or his successors in office, to which payment well and truly to be made and done, we, the undersigned, bind ourselves and each of us, our heirs, executors, administrators, successors, assigns, and legal representatives, jointly and severally, by these presents.

THE CONDITION OF THIS BOND IS SUCH THAT, WHEREAS, the above bounden principal contemplates laying, constructing, maintaining and/or repairing one or more cables, conduits, and/or pole lines in, under, across and/or along roads, streets and highways, commercial driveway and median openings or modifications in the County of Fort Bend, and the State of Texas, under the jurisdiction of the Commissioners' Court of Fort Bend County, Texas, pursuant to the Commissioners' Court order adopted on the 1st day of December, A.D. 1980, recorded in Volume 13, of the Commissioners' Court Minutes of Fort Bend County, Texas, regulating same, which Commissioners' Court order is hereby referred to and made a part hereof for all purposes as though fully set out herein;

AND WHEREAS, the principal desires to provide Fort Bend County with a performance bond covering all such cable, conduit and/or pole line activity, commercial driveway and median openings or modifications;

NOW, THEREFORE, if the above bounden principal shall faithfully perform all its cable, conduit and/or pole line activity (including, but not limited to the laying, construction, maintenance and/or repair of cables, conduits and/or pole lines) in, under, across and/or along roads, streets and highways, commercial driveway and median openings or modifications in the County of Fort Bend and State of Texas, under the jurisdiction of the Commissioners Court of Fort Bend County, Texas, pursuant to and in accordance with minimum requirements and conditions of the above mentioned Commissioners' Court order set forth and specified to be by said principal done and performed, at the time and in the manner therein specified, and shall pay over and make good and reimburse Fort Bend County, all loss and damages which Fort Bend County may sustain by reason of any failure or default on the part of said principal, then this obligation shall be null and void, otherwise to remain in full force and effect.

This bond is payable at the County Courthouse in the County of Fort Bend and State of Texas.

It is understood that at any time Fort Bend County deems itself insecure under this bond, it may require further and/or additional bonds of the principal.

EXECUTED this 29th day of March, 20 16.

W. W. Payton Corporation  
PRINCIPAL

BY Wesley W. Payton, President

Hartford Casualty Insurance Company  
SURETY

BY Sharon Cavanaugh Attorney-in-Fact

# POWER OF ATTORNEY

Direct Inquiries/Claims to:

THE HARTFORD  
BOND, T-4  
One Hartford Plaza  
Hartford, Connecticut 06155

call: 888-266-3488 or fax: 860-757-5835

Agency Code: 61-610074 & 46-505987

**KNOW ALL PERSONS BY THESE PRESENTS THAT:**

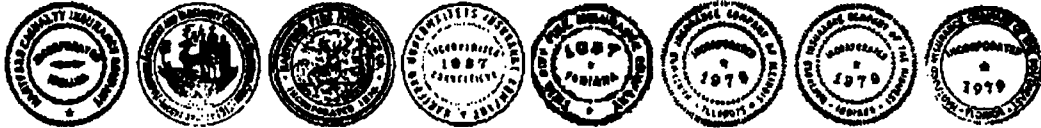
- Hartford Fire Insurance Company, a corporation duly organized under the laws of the State of Connecticut
- Hartford Casualty Insurance Company, a corporation duly organized under the laws of the State of Indiana
- Hartford Accident and Indemnity Company, a corporation duly organized under the laws of the State of Connecticut
- Hartford Underwriters Insurance Company, a corporation duly organized under the laws of the State of Connecticut
- Twin City Fire Insurance Company, a corporation duly organized under the laws of the State of Indiana
- Hartford Insurance Company of Illinois, a corporation duly organized under the laws of the State of Illinois
- Hartford Insurance Company of the Midwest, a corporation duly organized under the laws of the State of Indiana
- Hartford Insurance Company of the Southeast, a corporation duly organized under the laws of the State of Florida

having their home office in Hartford, Connecticut, (hereinafter collectively referred to as the "Companies") do hereby make, constitute and appoint, **up to the amount of unlimited:**

*Andrew J. Janda, C. W. Adams, Sue Kohler, Leland L. Rauch, Sharon Cavanaugh, Cheryl R. Colson,  
Michael Cole, Kurt A. Risk, James Wynne Tomforde*  
of  
*Houston, TX*

their true and lawful Attorney(s)-in-Fact, each in their separate capacity if more than one is named above, to sign its name as surety(ies) only as delineated above by , and to execute, seal and acknowledge any and all bonds, undertakings, contracts and other written instruments in the nature thereof, on behalf of the Companies in their business of guaranteeing the fidelity of persons, guaranteeing the performance of contracts and executing or guaranteeing bonds and undertakings required or permitted in any actions or proceedings allowed by law.

In Witness Whereof, and as authorized by a Resolution of the Board of Directors of the Companies on January 22, 2004 the Companies have caused these presents to be signed by its Assistant Vice President and its corporate seals to be hereto affixed, duly attested by its Assistant Secretary. Further, pursuant to Resolution of the Board of Directors of the Companies, the Companies hereby unambiguously affirm that they are and will be bound by any mechanically applied signatures applied to this Power of Attorney.



*Wesley W. Cowling*

Wesley W. Cowling, Assistant Secretary

*M. Ross Fisher*

M. Ross Fisher, Assistant Vice President

STATE OF CONNECTICUT }  
COUNTY OF HARTFORD } ss. Hartford

On this 12<sup>th</sup> day of July, 2012, before me personally came M. Ross Fisher, to me known, who being by me duly sworn, did depose and say: that he resides in the County of Hartford, State of Connecticut; that he is the Assistant Vice President of the Companies, the corporations described in and which executed the above instrument; that he knows the seals of the said corporations; that the seals affixed to the said instrument are such corporate seals; that they were so affixed by authority of the Boards of Directors of said corporations and that he signed his name thereto by like authority.



CERTIFICATE

*Kathleen T. Maynard*

Kathleen T. Maynard  
Notary Public

My Commission Expires July 31, 2016

I, the undersigned, Assistant Vice President of the Companies, DO HEREBY CERTIFY that the above and foregoing is a true and correct copy of the Power of Attorney executed by said Companies, which is still in full force effective as of **March 29, 2016**  
Signed and sealed at the City of Hartford.



*Gary W. Stumper*

Gary W. Stumper, Assistant Vice President







**BENCHMARK:**  
 14-132 - WOOD BOX STAMPED 1-10-87, 87.181 IN THE NW CORNER OF A CONCRETE FOUNDATION. THE POINT OF INTERSECTION OF THE CENTERLINE OF THE PROPOSED ROAD WITH THE CENTERLINE OF THE CENTERLINE OF THE PROPOSED ROAD IS LOWER THAN THE ROAD.  
 ELEV. = 78.66 FEET (NAD-79) 1973 ADA  
 B.M. = 6319 1027 1932 ADA  
 100 YEAR BASE FLOOD ELEVATION = 85.97

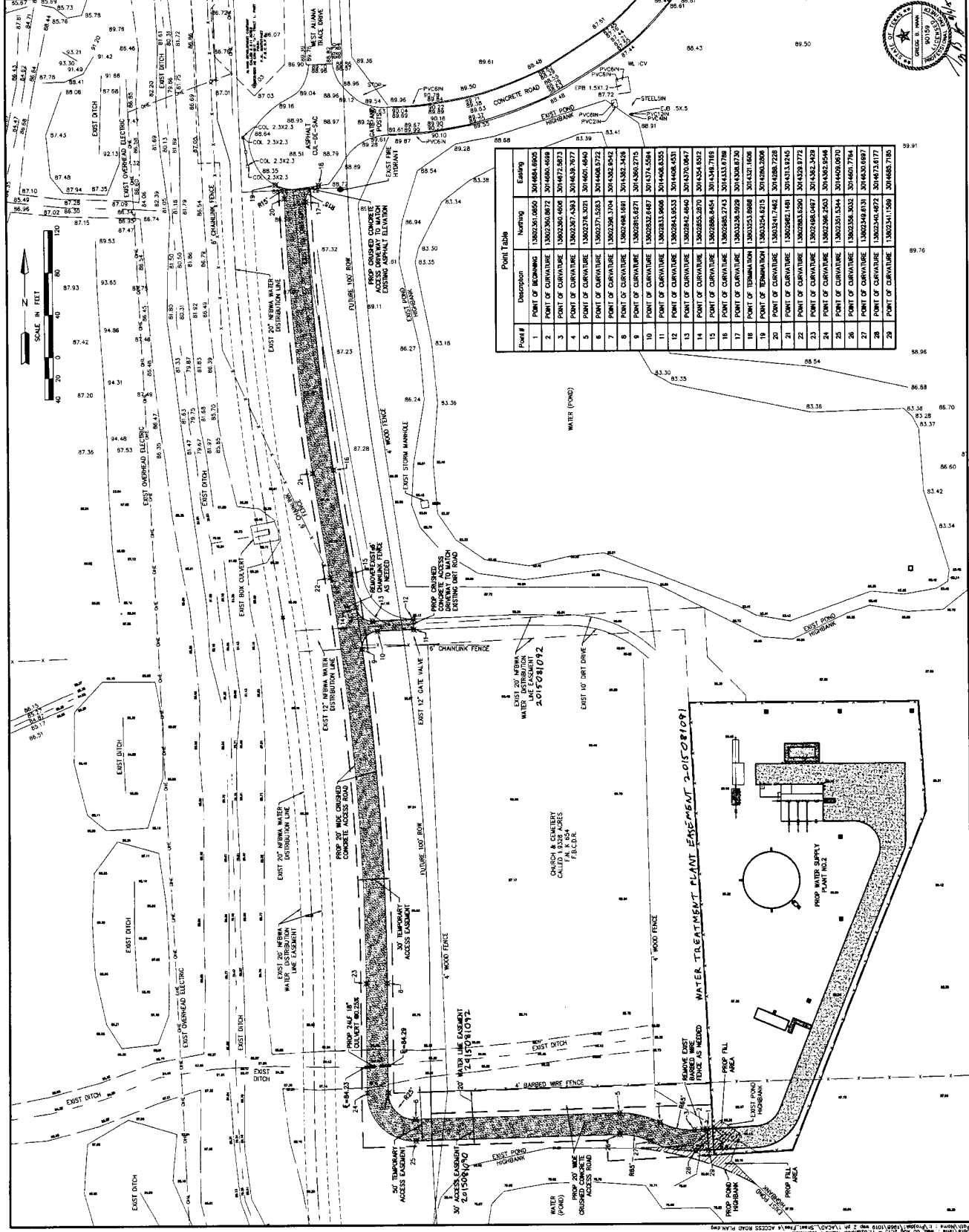
**NOTES:**  
 1) ALL ELEVATIONS SHOWN ARE EXISTING NATURAL GROUND. EXISTING AND PROPOSED CONCRETE ACCESS ROAD TO FOLLOW EXISTING CONCRETE ACCESS ROAD.  
 2) CONTRACTOR TO GRADE THE PROPOSED FILL. THE AREA SHOWN TO BE FILL SHALL BE PROVED TO BE FILL TO THE SOUTH OF THE PROPOSED ACCESS ROAD.

**DEVELOPMENT COORDINATOR:** [Signature]  
**DATE:** 9-21-15

**LJA Engineering, Inc.**  
 Phone: 713.953.5500  
 Fax: 713.953.5501  
 2970 Briarpark Drive  
 Houston, Texas 77042  
 FRI 41.1308

**FORT BEND COUNTY MUNICIPAL UTILITY DISTRICT 134A**  
**WATER PLANT NO. 2 - PHASE 1**  
**ACCESS ROAD PLAN**

DATE: 9-21-15  
 SHEET NO: 4 OF 25











**BENCHMARK:**  
 A-1321 - BASS ONE, STAMPS A-1321 101, SET IN THE TOP OF A CONCRETE  
 MONUMENT IN THE SOUTHWEST CORNER OF THE BASS ONE, 11.611' BY  
 9.27' (23' 10") EAST OF THE CENTERLINE OF THE NORTH CHUTE, GENERALLY  
 LONGER THAN THE ROAD.  
 ELEV. = 78.69 FEET (MWD-29) 1977 ADA  
 THE MONUMENT IS A 1/2" CAP (CATED) APPROX. 5/8" DIA. SET ON THE SURFACE OF THE  
 SOUTHWEST CORNER OF THE MONUMENT PROPERTY AT THE INTERSECTION OF MOORE  
 ELEV. = 83.19 FEET 1977 ADA  
 100 YEAR BASE FLOOR ELEVATION = 88.87

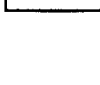
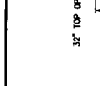
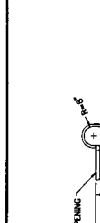
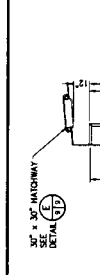
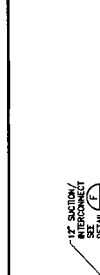
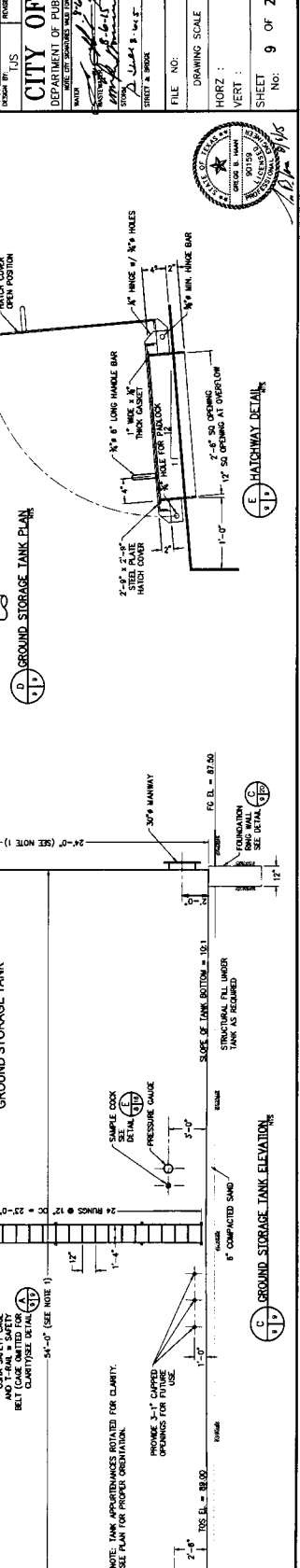
1. TANK DIMENSIONS SHOWN ARE APPROXIMATE AND SHALL  
 BE VERIFIED BY TANK MFG.

**EDGE BEND COUNTY**  
 Development Coordinator: *[Signature]*  
 Date: 9-21-15  
 PLAN NAME: CPC 101 FILE NO.  
 C.O.N. LOG NO.  
 DATE

**LJA Engineering, Inc.**  
 2925 Bissonnet Drive  
 Suite 600  
 Houston, Texas 77042  
 Phone 713.963.5200  
 Fax 713.963.3028  
 FPN 713.963.5200

**FORT BEND COUNTY MUNICIPAL  
 UTILITY DISTRICT 134A**  
 WATER PLANT NO. 2 - PHASE I  
 GROUND STORAGE TANK PLAN, ELEVATION  
 AND DETAILS

DESIGN BY: TJS  
 CHECKED BY: TJS  
 DATE: SEPT. 2014  
**CITY OF HOUSTON**  
 DEPARTMENT OF PUBLIC WORKS AND ENGINEERING  
 WATER DIVISION  
 WATER TREATMENT PLANT NO. 2 - PHASE I  
 WATER TREATMENT PLANT NO. 2 - PHASE I  
 STREET & BLOCK: J.W. & 3rd St.  
 SHEET NO. 9 OF 25





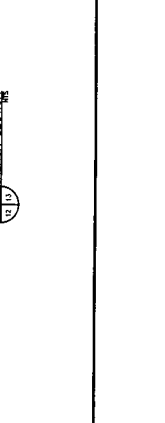
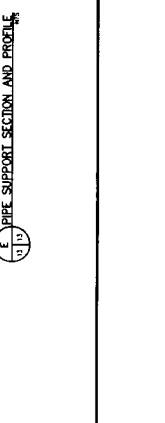
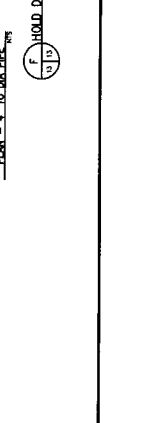
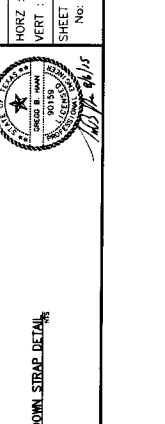
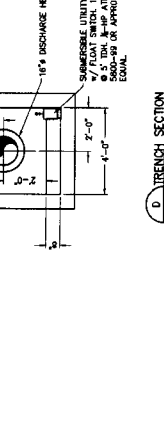
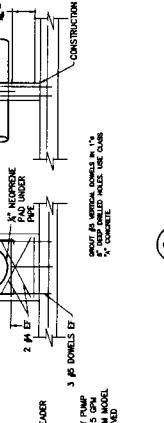
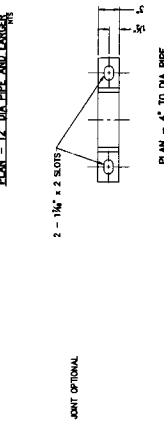
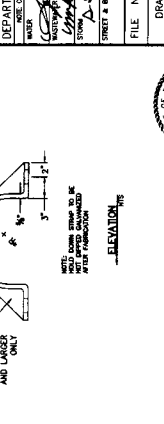
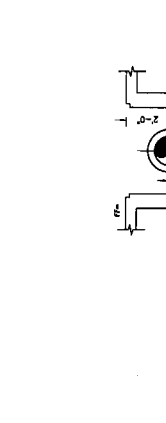
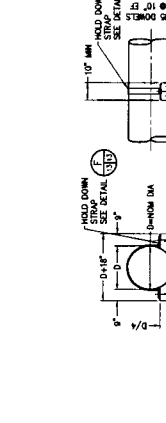
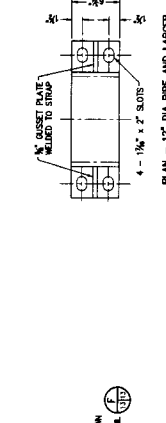
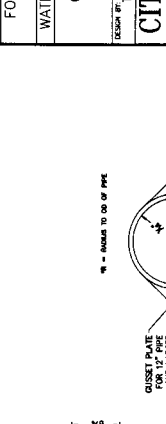
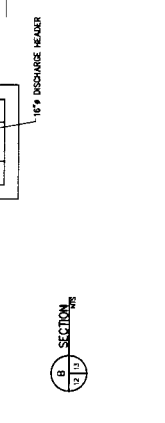
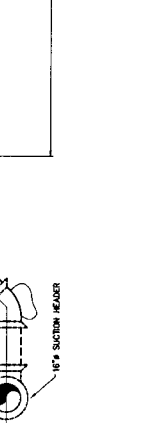
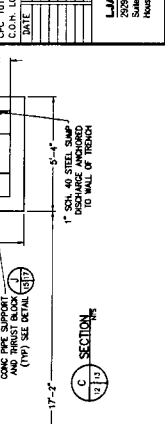
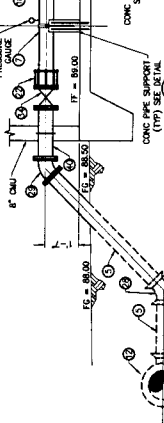
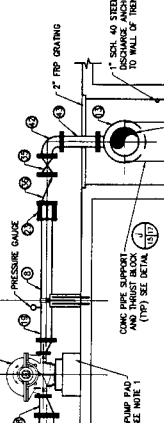
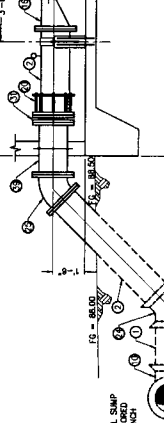
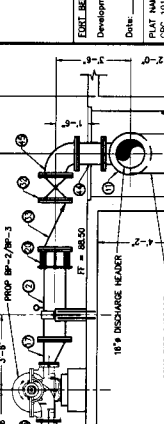
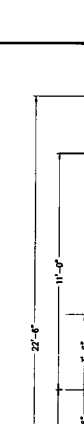
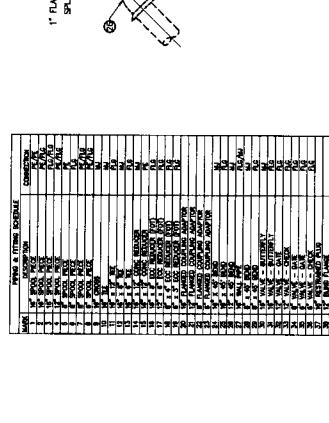
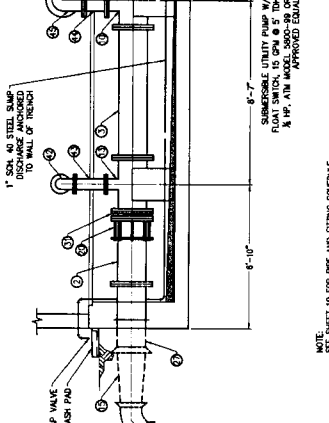
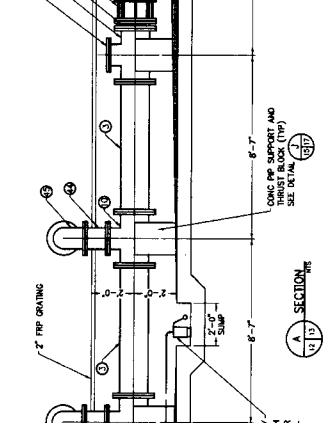
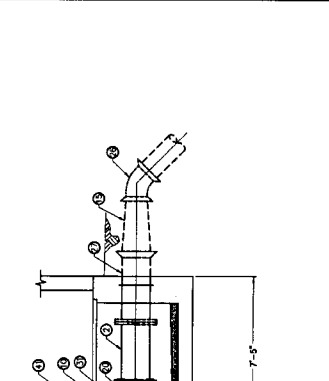




**REVISIONS**

1. ALL DIMENSIONS ARE TO FACE UNLESS OTHERWISE NOTED.  
 2. ALL DIMENSIONS ARE TO FACE UNLESS OTHERWISE NOTED.  
 3. ALL DIMENSIONS ARE TO FACE UNLESS OTHERWISE NOTED.  
 4. ALL DIMENSIONS ARE TO FACE UNLESS OTHERWISE NOTED.  
 5. ALL DIMENSIONS ARE TO FACE UNLESS OTHERWISE NOTED.  
 6. ALL DIMENSIONS ARE TO FACE UNLESS OTHERWISE NOTED.  
 7. ALL DIMENSIONS ARE TO FACE UNLESS OTHERWISE NOTED.  
 8. ALL DIMENSIONS ARE TO FACE UNLESS OTHERWISE NOTED.  
 9. ALL DIMENSIONS ARE TO FACE UNLESS OTHERWISE NOTED.  
 10. ALL DIMENSIONS ARE TO FACE UNLESS OTHERWISE NOTED.  
 11. ALL DIMENSIONS ARE TO FACE UNLESS OTHERWISE NOTED.  
 12. ALL DIMENSIONS ARE TO FACE UNLESS OTHERWISE NOTED.  
 13. ALL DIMENSIONS ARE TO FACE UNLESS OTHERWISE NOTED.  
 14. ALL DIMENSIONS ARE TO FACE UNLESS OTHERWISE NOTED.  
 15. ALL DIMENSIONS ARE TO FACE UNLESS OTHERWISE NOTED.  
 16. ALL DIMENSIONS ARE TO FACE UNLESS OTHERWISE NOTED.  
 17. ALL DIMENSIONS ARE TO FACE UNLESS OTHERWISE NOTED.  
 18. ALL DIMENSIONS ARE TO FACE UNLESS OTHERWISE NOTED.  
 19. ALL DIMENSIONS ARE TO FACE UNLESS OTHERWISE NOTED.  
 20. ALL DIMENSIONS ARE TO FACE UNLESS OTHERWISE NOTED.  
 21. ALL DIMENSIONS ARE TO FACE UNLESS OTHERWISE NOTED.  
 22. ALL DIMENSIONS ARE TO FACE UNLESS OTHERWISE NOTED.  
 23. ALL DIMENSIONS ARE TO FACE UNLESS OTHERWISE NOTED.  
 24. ALL DIMENSIONS ARE TO FACE UNLESS OTHERWISE NOTED.  
 25. ALL DIMENSIONS ARE TO FACE UNLESS OTHERWISE NOTED.  
 26. ALL DIMENSIONS ARE TO FACE UNLESS OTHERWISE NOTED.  
 27. ALL DIMENSIONS ARE TO FACE UNLESS OTHERWISE NOTED.  
 28. ALL DIMENSIONS ARE TO FACE UNLESS OTHERWISE NOTED.  
 29. ALL DIMENSIONS ARE TO FACE UNLESS OTHERWISE NOTED.  
 30. ALL DIMENSIONS ARE TO FACE UNLESS OTHERWISE NOTED.  
 31. ALL DIMENSIONS ARE TO FACE UNLESS OTHERWISE NOTED.  
 32. ALL DIMENSIONS ARE TO FACE UNLESS OTHERWISE NOTED.  
 33. ALL DIMENSIONS ARE TO FACE UNLESS OTHERWISE NOTED.  
 34. ALL DIMENSIONS ARE TO FACE UNLESS OTHERWISE NOTED.  
 35. ALL DIMENSIONS ARE TO FACE UNLESS OTHERWISE NOTED.  
 36. ALL DIMENSIONS ARE TO FACE UNLESS OTHERWISE NOTED.  
 37. ALL DIMENSIONS ARE TO FACE UNLESS OTHERWISE NOTED.  
 38. ALL DIMENSIONS ARE TO FACE UNLESS OTHERWISE NOTED.  
 39. ALL DIMENSIONS ARE TO FACE UNLESS OTHERWISE NOTED.  
 40. ALL DIMENSIONS ARE TO FACE UNLESS OTHERWISE NOTED.  
 41. ALL DIMENSIONS ARE TO FACE UNLESS OTHERWISE NOTED.  
 42. ALL DIMENSIONS ARE TO FACE UNLESS OTHERWISE NOTED.  
 43. ALL DIMENSIONS ARE TO FACE UNLESS OTHERWISE NOTED.  
 44. ALL DIMENSIONS ARE TO FACE UNLESS OTHERWISE NOTED.  
 45. ALL DIMENSIONS ARE TO FACE UNLESS OTHERWISE NOTED.  
 46. ALL DIMENSIONS ARE TO FACE UNLESS OTHERWISE NOTED.  
 47. ALL DIMENSIONS ARE TO FACE UNLESS OTHERWISE NOTED.  
 48. ALL DIMENSIONS ARE TO FACE UNLESS OTHERWISE NOTED.  
 49. ALL DIMENSIONS ARE TO FACE UNLESS OTHERWISE NOTED.  
 50. ALL DIMENSIONS ARE TO FACE UNLESS OTHERWISE NOTED.  
 51. ALL DIMENSIONS ARE TO FACE UNLESS OTHERWISE NOTED.  
 52. ALL DIMENSIONS ARE TO FACE UNLESS OTHERWISE NOTED.  
 53. ALL DIMENSIONS ARE TO FACE UNLESS OTHERWISE NOTED.  
 54. ALL DIMENSIONS ARE TO FACE UNLESS OTHERWISE NOTED.  
 55. ALL DIMENSIONS ARE TO FACE UNLESS OTHERWISE NOTED.  
 56. ALL DIMENSIONS ARE TO FACE UNLESS OTHERWISE NOTED.  
 57. ALL DIMENSIONS ARE TO FACE UNLESS OTHERWISE NOTED.  
 58. ALL DIMENSIONS ARE TO FACE UNLESS OTHERWISE NOTED.  
 59. ALL DIMENSIONS ARE TO FACE UNLESS OTHERWISE NOTED.  
 60. ALL DIMENSIONS ARE TO FACE UNLESS OTHERWISE NOTED.  
 61. ALL DIMENSIONS ARE TO FACE UNLESS OTHERWISE NOTED.  
 62. ALL DIMENSIONS ARE TO FACE UNLESS OTHERWISE NOTED.  
 63. ALL DIMENSIONS ARE TO FACE UNLESS OTHERWISE NOTED.  
 64. ALL DIMENSIONS ARE TO FACE UNLESS OTHERWISE NOTED.  
 65. ALL DIMENSIONS ARE TO FACE UNLESS OTHERWISE NOTED.  
 66. ALL DIMENSIONS ARE TO FACE UNLESS OTHERWISE NOTED.  
 67. ALL DIMENSIONS ARE TO FACE UNLESS OTHERWISE NOTED.  
 68. ALL DIMENSIONS ARE TO FACE UNLESS OTHERWISE NOTED.  
 69. ALL DIMENSIONS ARE TO FACE UNLESS OTHERWISE NOTED.  
 70. ALL DIMENSIONS ARE TO FACE UNLESS OTHERWISE NOTED.  
 71. ALL DIMENSIONS ARE TO FACE UNLESS OTHERWISE NOTED.  
 72. ALL DIMENSIONS ARE TO FACE UNLESS OTHERWISE NOTED.  
 73. ALL DIMENSIONS ARE TO FACE UNLESS OTHERWISE NOTED.  
 74. ALL DIMENSIONS ARE TO FACE UNLESS OTHERWISE NOTED.  
 75. ALL DIMENSIONS ARE TO FACE UNLESS OTHERWISE NOTED.  
 76. ALL DIMENSIONS ARE TO FACE UNLESS OTHERWISE NOTED.  
 77. ALL DIMENSIONS ARE TO FACE UNLESS OTHERWISE NOTED.  
 78. ALL DIMENSIONS ARE TO FACE UNLESS OTHERWISE NOTED.  
 79. ALL DIMENSIONS ARE TO FACE UNLESS OTHERWISE NOTED.  
 80. ALL DIMENSIONS ARE TO FACE UNLESS OTHERWISE NOTED.  
 81. ALL DIMENSIONS ARE TO FACE UNLESS OTHERWISE NOTED.  
 82. ALL DIMENSIONS ARE TO FACE UNLESS OTHERWISE NOTED.  
 83. ALL DIMENSIONS ARE TO FACE UNLESS OTHERWISE NOTED.  
 84. ALL DIMENSIONS ARE TO FACE UNLESS OTHERWISE NOTED.  
 85. ALL DIMENSIONS ARE TO FACE UNLESS OTHERWISE NOTED.  
 86. ALL DIMENSIONS ARE TO FACE UNLESS OTHERWISE NOTED.  
 87. ALL DIMENSIONS ARE TO FACE UNLESS OTHERWISE NOTED.  
 88. ALL DIMENSIONS ARE TO FACE UNLESS OTHERWISE NOTED.  
 89. ALL DIMENSIONS ARE TO FACE UNLESS OTHERWISE NOTED.  
 90. ALL DIMENSIONS ARE TO FACE UNLESS OTHERWISE NOTED.  
 91. ALL DIMENSIONS ARE TO FACE UNLESS OTHERWISE NOTED.  
 92. ALL DIMENSIONS ARE TO FACE UNLESS OTHERWISE NOTED.  
 93. ALL DIMENSIONS ARE TO FACE UNLESS OTHERWISE NOTED.  
 94. ALL DIMENSIONS ARE TO FACE UNLESS OTHERWISE NOTED.  
 95. ALL DIMENSIONS ARE TO FACE UNLESS OTHERWISE NOTED.  
 96. ALL DIMENSIONS ARE TO FACE UNLESS OTHERWISE NOTED.  
 97. ALL DIMENSIONS ARE TO FACE UNLESS OTHERWISE NOTED.  
 98. ALL DIMENSIONS ARE TO FACE UNLESS OTHERWISE NOTED.  
 99. ALL DIMENSIONS ARE TO FACE UNLESS OTHERWISE NOTED.  
 100. ALL DIMENSIONS ARE TO FACE UNLESS OTHERWISE NOTED.

NOTES:  
 1. CONCRETE PUMP PADS TO BE SIZED TO FIT PUMPS SELECTED APPROVED SHOP DRAWINGS.  
 2. APPROVED SHOP DRAWINGS.



NO.	DATE	BY	CHKD.	DESCRIPTION
1	9-2-15	AS	AS	ISSUED FOR PERMITS
2				
3				
4				
5				
6				
7				
8				
9				
10				
11				
12				
13				
14				
15				
16				
17				
18				
19				
20				
21				
22				
23				
24				
25				
26				
27				
28				
29				
30				
31				
32				
33				
34				
35				
36				
37				
38				
39				
40				
41				
42				
43				
44				
45				
46				
47				
48				
49				
50				
51				
52				
53				
54				
55				
56				
57				
58				
59				
60				
61				
62				
63				
64				
65				
66				
67				
68				
69				
70				
71				
72				
73				
74				
75				
76				
77				
78				
79				
80				
81				
82				
83				
84				
85				
86				
87				
88				
89				
90				
91				
92				
93				
94				
95				
96				
97				
98				
99				
100				

**LJA Engineering, Inc.**  
 2500 West Loop  
 Suite 600  
 Houston, Texas 77042  
 Phone: 713.865.5000  
 Fax: 713.865.5008  
 FRN: F-1306

**FORT BEND COUNTY MUNICIPAL**  
 UTILITY DISTRICT 134A  
 WATER PLANT NO. 2 - PHASE I  
 CONTROL BUILDING MECHANICAL SECTIONS AND DETAILS

DRAWN BY: TJS  
 CHECKED BY: TJS  
 DATE: 9-2-15

CITY OF HOUSTON  
 DEPARTMENT OF PUBLIC WORKS AND ENGINEERING  
 WATER UTILITIES DIVISION  
 STORM WATER QUALITY  
 STATION: 2013-134A-13  
 SHEET: 13 OF 25

FILE NO.:  
 DRAWING SCALE:  
 HORIZ.:  
 VERT.:  
 SHEET NO.: 13 OF 25

FOR CITY OF HOUSTON USE ONLY  
 54572



HOLD DOWN STRAP DETAIL  
 PLAN - 4" TO DIA. PIPE

PIPE SUPPORT SECTION AND PROFILE  
 1" DIA. PIPE

TRENCH SECTION  
 1" DIA. PIPE

HOLD DOWN STRAP DETAIL  
 PLAN - 4" TO DIA. PIPE









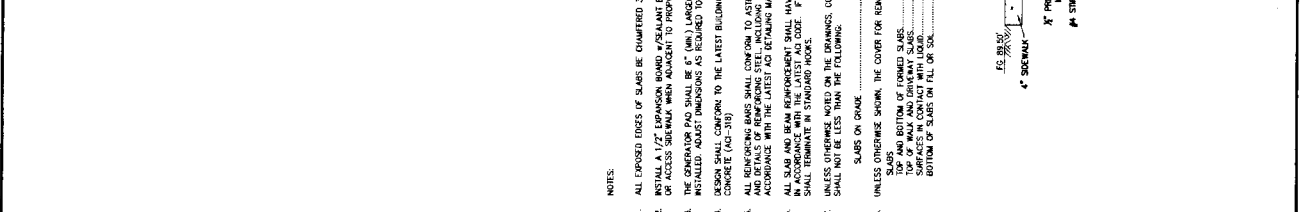
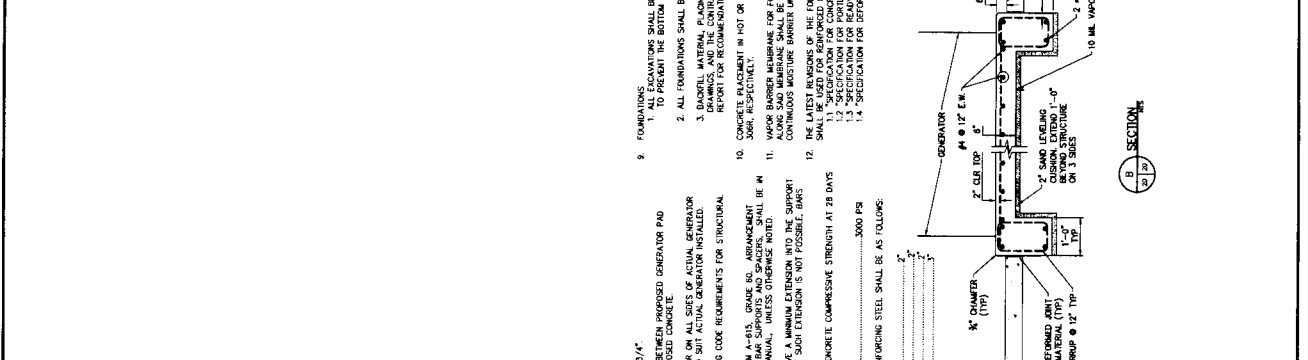
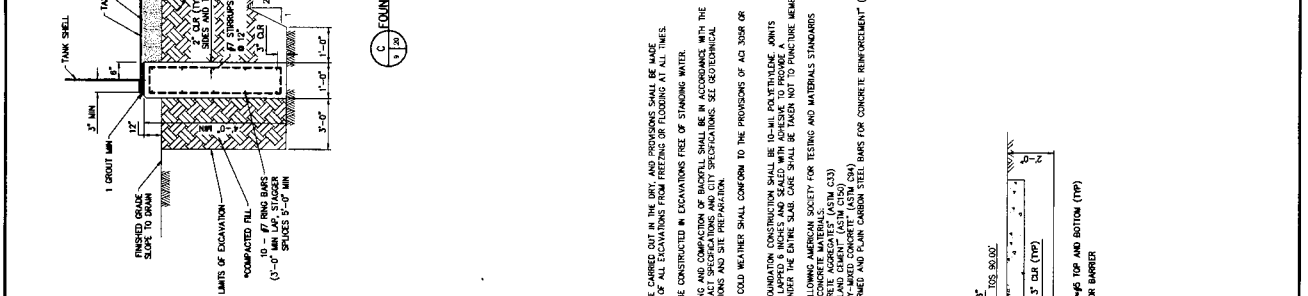




**FORTRAN COUNTY**  
 Development Coordinator: *[Signature]*  
 Date: 9-21-15  
 PLAT NAME: \_\_\_\_\_  
 FILE NO. \_\_\_\_\_  
 C.D.A. LOTS NO. \_\_\_\_\_  
 DATE: \_\_\_\_\_  
 BY: \_\_\_\_\_  
**LLA Engineering, Inc.**  
 2025 Hempstead Drive  
 Suite 600  
 Houston, Texas 77062  
 Phone 713.953.5555  
 Fax 713.953.5005  
 FIRM: F-1386

**FORT BEND COUNTY MUNICIPAL**  
 UTILITY DISTRICT 134A  
 WATER PLANT NO. 2 - PHASE 1  
 MISCELLANEOUS CIVIL DETAILS SHEET 3 OF 3

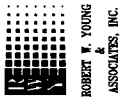
DESIGNED BY: TJS  
 CHECKED BY: TJS  
 DATE: SEPT. 2014  
**CITY OF HOUSTON**  
 DEPARTMENT OF PUBLIC WORKS AND ENGINEERING  
 1001 EAST BROADWAY, SUITE 1000, HOUSTON, TEXAS 77002  
 PHONE: 713.251.1000  
 FAX: 713.251.1000  
 STREET & BLOCK: \_\_\_\_\_  
 COUNTY: *[Signature]*  
 FILE NO.: \_\_\_\_\_  
 DRAWING SCALE: \_\_\_\_\_  
 HORIZ: N.T.S.  
 VERT: \_\_\_\_\_  
 SHEET NO: 20 OF 25



**NOTES:**  
 1. ALL EXPOSED EDGES OF SLABS BE CHAMFERED 3/4".  
 2. INSTALL A 1/2" REINFORCING BARS & SPACERS BETWEEN PROPOSED GENERATOR PAD OR ACCESS SIDEWALK WHEN ADJACENT TO PROPOSED CONCRETE.  
 3. THE GENERATOR PAD SHALL BE 4" (MIN) LARGER ON ALL SIDES OF ACTUAL GENERATOR INSTALLED. ADJUST DIMENSIONS AS REQUIRED TO MEET ACTUAL GENERATOR INSTALLED.  
 4. DESIGN SHALL CONFORM TO THE LATEST BUILDING CODE REQUIREMENTS FOR STRUCTURAL CONCRETE (ACI-318).  
 5. ALL REINFORCING BARS SHALL CONFORM TO ASTM A-615, GRADE 60, ARRANGEMENT AND DETAILS OF REINFORCING STEEL, INCLUDING BAR SUPPORTS AND SPACERS, SHALL BE IN ACCORDANCE WITH THE LATEST EDITION OF THE ACI 308R HANDBOOK, UNLESS OTHERWISE NOTED.  
 6. ALL REINFORCING BARS SHALL HAVE A MINIMUM EXTENSION INTO THE SUPPORT SHALL TERMINATE IN STANDARD HOOKS.  
 7. UNLESS OTHERWISE NOTED ON THE DRAWINGS, CONCRETE COMPRESSIVE STRENGTH AT 28 DAYS SHALL NOT BE LESS THAN THE FOLLOWING:  
 SLABS ON GRADE ..... 3000 PSI  
 SLABS ..... 4000 PSI  
 TOP AND BOTTOM OF FORMED SLABS ..... 4000 PSI  
 ALL OTHERS ..... 4000 PSI  
 DIMENSIONS ARE BASED ON MOHLER GENERATOR MODEL 600R2C20B



**BENCHMARK:** MARK ONE STAMPED JULY 2011 SET IN THE TOP OF A CONCRETE FOUNDATION ON THE WEST CORNER OF THE MAIN BUILDING, 1/4 MILE WEST OF THE INTERSECTION OF THE WEST END OF THE NORTH CONDUIT CORRIDOR AND THE WEST END OF THE WEST END OF THE NORTH CONDUIT CORRIDOR. THE CORNER OF THE BUILDING IS 1/4 MILE WEST OF THE INTERSECTION OF THE WEST END OF THE NORTH CONDUIT CORRIDOR AND THE WEST END OF THE WEST END OF THE NORTH CONDUIT CORRIDOR. ELEVATION = 76.65 FEET (MWD-20) 1973 ADJ.  
 THE CORNER OF THE MAIN BUILDING IS 1/4 MILE WEST OF THE INTERSECTION OF THE WEST END OF THE NORTH CONDUIT CORRIDOR AND THE WEST END OF THE WEST END OF THE NORTH CONDUIT CORRIDOR. ELEVATION = 76.65 FEET (MWD-20) 1973 ADJ.  
 THE CORNER OF THE MAIN BUILDING IS 1/4 MILE WEST OF THE INTERSECTION OF THE WEST END OF THE NORTH CONDUIT CORRIDOR AND THE WEST END OF THE WEST END OF THE NORTH CONDUIT CORRIDOR. ELEVATION = 76.65 FEET (MWD-20) 1973 ADJ.



**ROBERT W. YOUNG & ASSOCIATES, INC.**  
 P.O. BOX 21197  
 HOUSTON, TX 77211-1977  
 (713) 861-4000 FAX  
 (713) 861-4001 TEL  
 (713) 861-4002 FAX



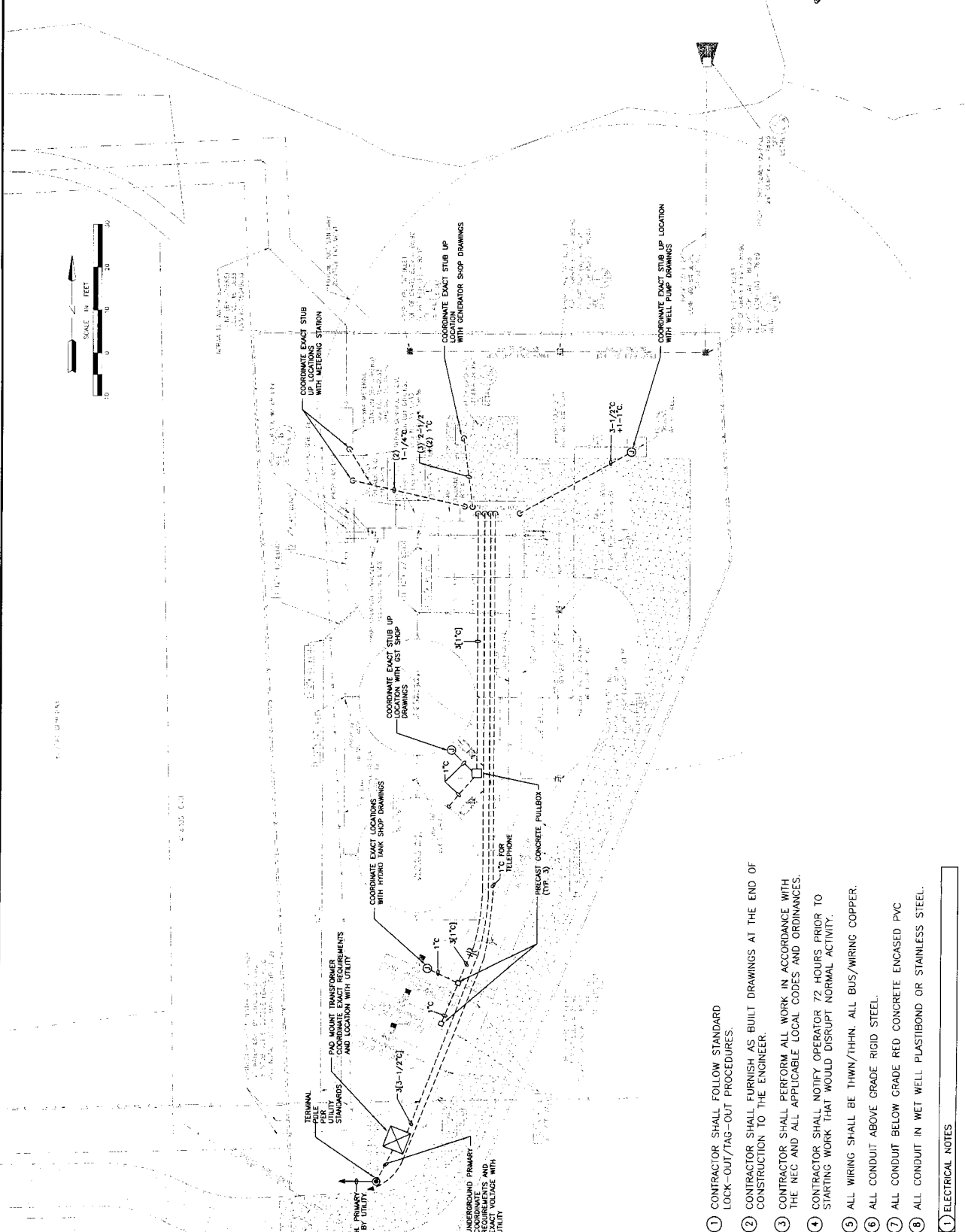
**FOR BEND COUNTY**  
 Development Coordinator: *[Signature]*  
 Date: 9-2-15  
 PLAN NAME: \_\_\_\_\_  
 FILE NO: \_\_\_\_\_  
 C.O.H. LOG NO: \_\_\_\_\_  
 DATE: \_\_\_\_\_  
 BY: \_\_\_\_\_

**LJA Engineering, Inc.**  
 Phone 713.953.5300  
 2222 Bayport Drive  
 Suite 600  
 Houston, Texas 77042  
 Fax 713.953.5078  
 FRN # 1386

**FORT BEND COUNTY MUNICIPAL UTILITY DISTRICT 134A**  
 WATER PLANT NO. 2 - PHASE 1  
 ELECTRICAL SITE PLAN

DESIGNED BY: R.W.Y. CHECKED BY: G.W.S. DATE: AUG. 2015  
**CITY OF HOUSTON**  
 DEPARTMENT OF PUBLIC WORKS AND ENGINEERING  
 WATER UTILITIES DIVISION  
 WATER PLANT NO. 2 - PHASE 1

SCALE: AS SHOWN  
 HORIZ: AS SHOWN  
 VERT: \_\_\_\_\_  
 SHEET No: 22 OF 25



- 1 CONTRACTOR SHALL FOLLOW STANDARD LOCK-OUT/TAG-OUT PROCEDURES.
- 2 CONTRACTOR SHALL FURNISH AS BUILT DRAWINGS AT THE END OF CONSTRUCTION TO THE ENGINEER.
- 3 CONTRACTOR SHALL PERFORM ALL WORK IN ACCORDANCE WITH THE NEC AND ALL APPLICABLE LOCAL CODES AND ORDINANCES.
- 4 CONTRACTOR SHALL NOTIFY OPERATOR 72 HOURS PRIOR TO STARTING WORK THAT WOULD DISRUPT NORMAL ACTIVITY.
- 5 ALL WIRING SHALL BE THINN/THHN. ALL BUS/WIRING COPPER.
- 6 ALL CONDUIT ABOVE GRADE RIGID STEEL.
- 7 ALL CONDUIT BELOW GRADE RED CONCRETE ENCASED PVC
- 8 ALL CONDUIT IN WET WELL PLASTIBOND OR STAINLESS STEEL.

1 ELECTRICAL NOTES

**REVISIONS:**

A-102 - BRASS TAG STAMPS A-102, SET IN THE TOP OF A CONCRETE ANCHOR IN THE REAR BRACKETS OF THE MAIN PANEL. THIS TAG SHALL BE 1/2" DIA. AND SHALL BE 1/4" THICK. THE TAG SHALL BE 1/4" FROM THE TOP OF THE BRACKETS AND 1/4" FROM THE SIDES. THE TAG SHALL BE 1/4" FROM THE TOP OF THE BRACKETS AND 1/4" FROM THE SIDES. THE TAG SHALL BE 1/4" FROM THE TOP OF THE BRACKETS AND 1/4" FROM THE SIDES.

DATE: 9-21-15

Development Coordinator: *[Signature]*

**LA Engineering, Inc.**  
 209 Sargent Drive  
 Suite 800  
 Houston, Texas 77042  
 Phone: 713.853.3300  
 Fax: 713.853.3026  
 FRI - F-1386

**CITY OF HOUSTON**  
 DEPARTMENT OF PUBLIC WORKS AND ENGINEERING  
 UTILITY DISTRICT 134A  
 WATER PLANT NO. 2 - PHASE I  
 ELECTRICAL DETAILS

DESIGN BY: RWT  
 CHECKED BY: GWS  
 DATE: AUG. 2015

**CITY OF HOUSTON**  
 DEPARTMENT OF PUBLIC WORKS AND ENGINEERING  
 UTILITY DISTRICT 134A  
 WATER PLANT NO. 2 - PHASE I  
 ELECTRICAL DETAILS

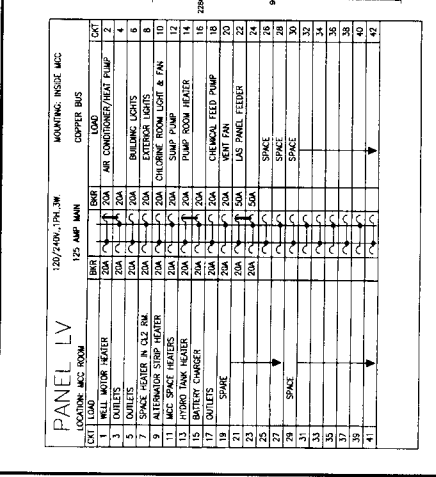
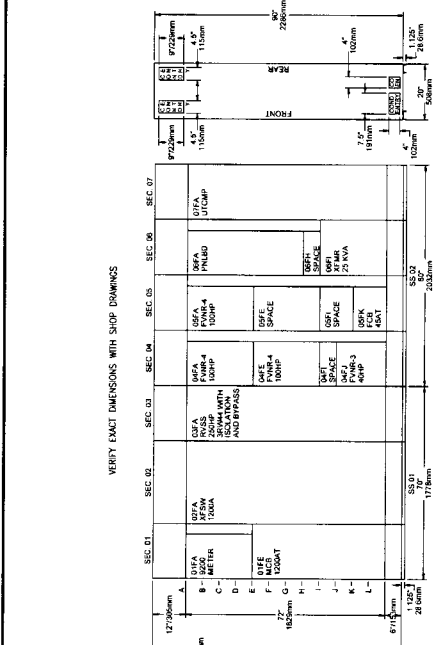
FILE NO.:  
 DRAWING SCALE:  
 HORIZ. AS SHOWN  
 VERT.:

SHEET NO. 23 OF 25

**PUMP STATION - ULTIMATE LOAD ANALYSIS**

LOAD DESCRIPTION	Amps	Phase	AMPS PER PHASE
BOOSTER PUMP 100 HP	124.00	3φ	124.00
BOOSTER PUMP 100 HP	124.00	3φ	124.00
BOOSTER PUMP 100 HP (FUT)	124.00	3φ	124.00
BOOSTER PUMP 40 HP	52.00	3φ	52.00
AIR COMPRESSOR 1 1/2HP	3.0	3φ	3.0
1 HP CHLORINE PUMP	1.80	1φ	1.80
250 HP WELL PUMP (FUT)	300.00	3φ	300.00
TRANSFORMER LOAD (15KVA RUNNING LOAD)	31.25	3φ	31.25
25% OF LARGEST MOTOR	75.00	3φ	75.00
TOTAL	760.05	3φ	760.05

USE 80% RATED 1200A 480V 3 PHASE 4 WIRE SERVICE



**5) LOAD ANALYSIS**

N.L.S.

**6) ELECTRICAL RISER DIAGRAM**

N.L.S.

**7) PANEL SCHEDULE**

N.L.S.

**8) MCC ELEVATION**

N.L.S.

**9) PUMP STATION - ULTIMATE LOAD ANALYSIS**

N.L.S.

**1) ELECTRICAL RISER DIAGRAM**

VERIFY EXACT DIMENSIONS WITH SHOP DRAWINGS

1. ALL MOTOR LOADS SHALL BE 100% OF THE MOTOR NAMEPLATE RATED LOAD. MOTOR LOADS SHALL BE 100% OF THE MOTOR NAMEPLATE RATED LOAD. MOTOR LOADS SHALL BE 100% OF THE MOTOR NAMEPLATE RATED LOAD.

2. ALL MOTOR LOADS SHALL BE 100% OF THE MOTOR NAMEPLATE RATED LOAD. MOTOR LOADS SHALL BE 100% OF THE MOTOR NAMEPLATE RATED LOAD. MOTOR LOADS SHALL BE 100% OF THE MOTOR NAMEPLATE RATED LOAD.

3. ALL MOTOR LOADS SHALL BE 100% OF THE MOTOR NAMEPLATE RATED LOAD. MOTOR LOADS SHALL BE 100% OF THE MOTOR NAMEPLATE RATED LOAD. MOTOR LOADS SHALL BE 100% OF THE MOTOR NAMEPLATE RATED LOAD.

4. ALL MOTOR LOADS SHALL BE 100% OF THE MOTOR NAMEPLATE RATED LOAD. MOTOR LOADS SHALL BE 100% OF THE MOTOR NAMEPLATE RATED LOAD. MOTOR LOADS SHALL BE 100% OF THE MOTOR NAMEPLATE RATED LOAD.

5. ALL MOTOR LOADS SHALL BE 100% OF THE MOTOR NAMEPLATE RATED LOAD. MOTOR LOADS SHALL BE 100% OF THE MOTOR NAMEPLATE RATED LOAD. MOTOR LOADS SHALL BE 100% OF THE MOTOR NAMEPLATE RATED LOAD.

6. ALL MOTOR LOADS SHALL BE 100% OF THE MOTOR NAMEPLATE RATED LOAD. MOTOR LOADS SHALL BE 100% OF THE MOTOR NAMEPLATE RATED LOAD. MOTOR LOADS SHALL BE 100% OF THE MOTOR NAMEPLATE RATED LOAD.

7. ALL MOTOR LOADS SHALL BE 100% OF THE MOTOR NAMEPLATE RATED LOAD. MOTOR LOADS SHALL BE 100% OF THE MOTOR NAMEPLATE RATED LOAD. MOTOR LOADS SHALL BE 100% OF THE MOTOR NAMEPLATE RATED LOAD.

8. ALL MOTOR LOADS SHALL BE 100% OF THE MOTOR NAMEPLATE RATED LOAD. MOTOR LOADS SHALL BE 100% OF THE MOTOR NAMEPLATE RATED LOAD. MOTOR LOADS SHALL BE 100% OF THE MOTOR NAMEPLATE RATED LOAD.

9. ALL MOTOR LOADS SHALL BE 100% OF THE MOTOR NAMEPLATE RATED LOAD. MOTOR LOADS SHALL BE 100% OF THE MOTOR NAMEPLATE RATED LOAD. MOTOR LOADS SHALL BE 100% OF THE MOTOR NAMEPLATE RATED LOAD.

10. ALL MOTOR LOADS SHALL BE 100% OF THE MOTOR NAMEPLATE RATED LOAD. MOTOR LOADS SHALL BE 100% OF THE MOTOR NAMEPLATE RATED LOAD. MOTOR LOADS SHALL BE 100% OF THE MOTOR NAMEPLATE RATED LOAD.

11. ALL MOTOR LOADS SHALL BE 100% OF THE MOTOR NAMEPLATE RATED LOAD. MOTOR LOADS SHALL BE 100% OF THE MOTOR NAMEPLATE RATED LOAD. MOTOR LOADS SHALL BE 100% OF THE MOTOR NAMEPLATE RATED LOAD.

12. ALL MOTOR LOADS SHALL BE 100% OF THE MOTOR NAMEPLATE RATED LOAD. MOTOR LOADS SHALL BE 100% OF THE MOTOR NAMEPLATE RATED LOAD. MOTOR LOADS SHALL BE 100% OF THE MOTOR NAMEPLATE RATED LOAD.

13. ALL MOTOR LOADS SHALL BE 100% OF THE MOTOR NAMEPLATE RATED LOAD. MOTOR LOADS SHALL BE 100% OF THE MOTOR NAMEPLATE RATED LOAD. MOTOR LOADS SHALL BE 100% OF THE MOTOR NAMEPLATE RATED LOAD.

14. ALL MOTOR LOADS SHALL BE 100% OF THE MOTOR NAMEPLATE RATED LOAD. MOTOR LOADS SHALL BE 100% OF THE MOTOR NAMEPLATE RATED LOAD. MOTOR LOADS SHALL BE 100% OF THE MOTOR NAMEPLATE RATED LOAD.

15. ALL MOTOR LOADS SHALL BE 100% OF THE MOTOR NAMEPLATE RATED LOAD. MOTOR LOADS SHALL BE 100% OF THE MOTOR NAMEPLATE RATED LOAD. MOTOR LOADS SHALL BE 100% OF THE MOTOR NAMEPLATE RATED LOAD.

16. ALL MOTOR LOADS SHALL BE 100% OF THE MOTOR NAMEPLATE RATED LOAD. MOTOR LOADS SHALL BE 100% OF THE MOTOR NAMEPLATE RATED LOAD. MOTOR LOADS SHALL BE 100% OF THE MOTOR NAMEPLATE RATED LOAD.

17. ALL MOTOR LOADS SHALL BE 100% OF THE MOTOR NAMEPLATE RATED LOAD. MOTOR LOADS SHALL BE 100% OF THE MOTOR NAMEPLATE RATED LOAD. MOTOR LOADS SHALL BE 100% OF THE MOTOR NAMEPLATE RATED LOAD.

18. ALL MOTOR LOADS SHALL BE 100% OF THE MOTOR NAMEPLATE RATED LOAD. MOTOR LOADS SHALL BE 100% OF THE MOTOR NAMEPLATE RATED LOAD. MOTOR LOADS SHALL BE 100% OF THE MOTOR NAMEPLATE RATED LOAD.

19. ALL MOTOR LOADS SHALL BE 100% OF THE MOTOR NAMEPLATE RATED LOAD. MOTOR LOADS SHALL BE 100% OF THE MOTOR NAMEPLATE RATED LOAD. MOTOR LOADS SHALL BE 100% OF THE MOTOR NAMEPLATE RATED LOAD.

20. ALL MOTOR LOADS SHALL BE 100% OF THE MOTOR NAMEPLATE RATED LOAD. MOTOR LOADS SHALL BE 100% OF THE MOTOR NAMEPLATE RATED LOAD. MOTOR LOADS SHALL BE 100% OF THE MOTOR NAMEPLATE RATED LOAD.

21. ALL MOTOR LOADS SHALL BE 100% OF THE MOTOR NAMEPLATE RATED LOAD. MOTOR LOADS SHALL BE 100% OF THE MOTOR NAMEPLATE RATED LOAD. MOTOR LOADS SHALL BE 100% OF THE MOTOR NAMEPLATE RATED LOAD.

22. ALL MOTOR LOADS SHALL BE 100% OF THE MOTOR NAMEPLATE RATED LOAD. MOTOR LOADS SHALL BE 100% OF THE MOTOR NAMEPLATE RATED LOAD. MOTOR LOADS SHALL BE 100% OF THE MOTOR NAMEPLATE RATED LOAD.

23. ALL MOTOR LOADS SHALL BE 100% OF THE MOTOR NAMEPLATE RATED LOAD. MOTOR LOADS SHALL BE 100% OF THE MOTOR NAMEPLATE RATED LOAD. MOTOR LOADS SHALL BE 100% OF THE MOTOR NAMEPLATE RATED LOAD.

24. ALL MOTOR LOADS SHALL BE 100% OF THE MOTOR NAMEPLATE RATED LOAD. MOTOR LOADS SHALL BE 100% OF THE MOTOR NAMEPLATE RATED LOAD. MOTOR LOADS SHALL BE 100% OF THE MOTOR NAMEPLATE RATED LOAD.

25. ALL MOTOR LOADS SHALL BE 100% OF THE MOTOR NAMEPLATE RATED LOAD. MOTOR LOADS SHALL BE 100% OF THE MOTOR NAMEPLATE RATED LOAD. MOTOR LOADS SHALL BE 100% OF THE MOTOR NAMEPLATE RATED LOAD.

26. ALL MOTOR LOADS SHALL BE 100% OF THE MOTOR NAMEPLATE RATED LOAD. MOTOR LOADS SHALL BE 100% OF THE MOTOR NAMEPLATE RATED LOAD. MOTOR LOADS SHALL BE 100% OF THE MOTOR NAMEPLATE RATED LOAD.

27. ALL MOTOR LOADS SHALL BE 100% OF THE MOTOR NAMEPLATE RATED LOAD. MOTOR LOADS SHALL BE 100% OF THE MOTOR NAMEPLATE RATED LOAD. MOTOR LOADS SHALL BE 100% OF THE MOTOR NAMEPLATE RATED LOAD.

28. ALL MOTOR LOADS SHALL BE 100% OF THE MOTOR NAMEPLATE RATED LOAD. MOTOR LOADS SHALL BE 100% OF THE MOTOR NAMEPLATE RATED LOAD. MOTOR LOADS SHALL BE 100% OF THE MOTOR NAMEPLATE RATED LOAD.

29. ALL MOTOR LOADS SHALL BE 100% OF THE MOTOR NAMEPLATE RATED LOAD. MOTOR LOADS SHALL BE 100% OF THE MOTOR NAMEPLATE RATED LOAD. MOTOR LOADS SHALL BE 100% OF THE MOTOR NAMEPLATE RATED LOAD.

30. ALL MOTOR LOADS SHALL BE 100% OF THE MOTOR NAMEPLATE RATED LOAD. MOTOR LOADS SHALL BE 100% OF THE MOTOR NAMEPLATE RATED LOAD. MOTOR LOADS SHALL BE 100% OF THE MOTOR NAMEPLATE RATED LOAD.

31. ALL MOTOR LOADS SHALL BE 100% OF THE MOTOR NAMEPLATE RATED LOAD. MOTOR LOADS SHALL BE 100% OF THE MOTOR NAMEPLATE RATED LOAD. MOTOR LOADS SHALL BE 100% OF THE MOTOR NAMEPLATE RATED LOAD.

32. ALL MOTOR LOADS SHALL BE 100% OF THE MOTOR NAMEPLATE RATED LOAD. MOTOR LOADS SHALL BE 100% OF THE MOTOR NAMEPLATE RATED LOAD. MOTOR LOADS SHALL BE 100% OF THE MOTOR NAMEPLATE RATED LOAD.

33. ALL MOTOR LOADS SHALL BE 100% OF THE MOTOR NAMEPLATE RATED LOAD. MOTOR LOADS SHALL BE 100% OF THE MOTOR NAMEPLATE RATED LOAD. MOTOR LOADS SHALL BE 100% OF THE MOTOR NAMEPLATE RATED LOAD.

34. ALL MOTOR LOADS SHALL BE 100% OF THE MOTOR NAMEPLATE RATED LOAD. MOTOR LOADS SHALL BE 100% OF THE MOTOR NAMEPLATE RATED LOAD. MOTOR LOADS SHALL BE 100% OF THE MOTOR NAMEPLATE RATED LOAD.

35. ALL MOTOR LOADS SHALL BE 100% OF THE MOTOR NAMEPLATE RATED LOAD. MOTOR LOADS SHALL BE 100% OF THE MOTOR NAMEPLATE RATED LOAD. MOTOR LOADS SHALL BE 100% OF THE MOTOR NAMEPLATE RATED LOAD.

36. ALL MOTOR LOADS SHALL BE 100% OF THE MOTOR NAMEPLATE RATED LOAD. MOTOR LOADS SHALL BE 100% OF THE MOTOR NAMEPLATE RATED LOAD. MOTOR LOADS SHALL BE 100% OF THE MOTOR NAMEPLATE RATED LOAD.

37. ALL MOTOR LOADS SHALL BE 100% OF THE MOTOR NAMEPLATE RATED LOAD. MOTOR LOADS SHALL BE 100% OF THE MOTOR NAMEPLATE RATED LOAD. MOTOR LOADS SHALL BE 100% OF THE MOTOR NAMEPLATE RATED LOAD.

38. ALL MOTOR LOADS SHALL BE 100% OF THE MOTOR NAMEPLATE RATED LOAD. MOTOR LOADS SHALL BE 100% OF THE MOTOR NAMEPLATE RATED LOAD. MOTOR LOADS SHALL BE 100% OF THE MOTOR NAMEPLATE RATED LOAD.

39. ALL MOTOR LOADS SHALL BE 100% OF THE MOTOR NAMEPLATE RATED LOAD. MOTOR LOADS SHALL BE 100% OF THE MOTOR NAMEPLATE RATED LOAD. MOTOR LOADS SHALL BE 100% OF THE MOTOR NAMEPLATE RATED LOAD.

40. ALL MOTOR LOADS SHALL BE 100% OF THE MOTOR NAMEPLATE RATED LOAD. MOTOR LOADS SHALL BE 100% OF THE MOTOR NAMEPLATE RATED LOAD. MOTOR LOADS SHALL BE 100% OF THE MOTOR NAMEPLATE RATED LOAD.

41. ALL MOTOR LOADS SHALL BE 100% OF THE MOTOR NAMEPLATE RATED LOAD. MOTOR LOADS SHALL BE 100% OF THE MOTOR NAMEPLATE RATED LOAD. MOTOR LOADS SHALL BE 100% OF THE MOTOR NAMEPLATE RATED LOAD.

42. ALL MOTOR LOADS SHALL BE 100% OF THE MOTOR NAMEPLATE RATED LOAD. MOTOR LOADS SHALL BE 100% OF THE MOTOR NAMEPLATE RATED LOAD. MOTOR LOADS SHALL BE 100% OF THE MOTOR NAMEPLATE RATED LOAD.



