

REVIEW BY FORT BEND COUNTY COMMISSIONERS COURT

On this 26th day of April, 2016, Commissioners Court came on to be heard and reviewed the accompanying notice of Kimley-Horn / EBCO General Contractors, Ltd Job Location 22610 Bellaire Boulevard, Richmond, TX 77406 Date 4/5/2016 Bond No. 09114246, Permit No. 2016-6466 to make use of certain Fort Bend County property subject to, "A Revised Order Regulating the Laying, Construction, Maintenance, and Repair of Buried Cables, Conduits, and Pole Lines, In, Under, Across or Along Roads, Streets, Highways, and Drainage Ditches in Fort Bend County, Texas, Under the Jurisdiction of the Commissioners Court of Fort Bend County, Texas," as passed by the Commissioners Court of Fort Bend County, Texas the 3rd day of August, 1987, recorded in Volume _____ of the Minutes of the Commissioners Court of Fort Bend County, Texas, to the extent that such order is not inconsistent with Article 1436a, Vernon's Texas Civil Statutes. Upon Motion of Commissioner Mejias, seconded by Commissioner Patterson, duly put and carried, it is ORDERED, ADJUDGED AND DECREED that said notice of said above purpose is hereby acknowledged by the Commissioners Court of Fort Bend County, Texas, and that said notice be placed on record according to the regulation order thereof.

Notes:

1. Evidence of review by the Commissioners Court must be kept on the job site and failure to do so constitutes grounds for job shutdown.
2. Written notices are required:
 - a. 48 hours in advance of construction start up, and
 - b. when construction is completed and ready for final inspection

Mail notices to: Permit Administrator
Fort Bend County Engineering
301 Jackson Street
Richmond, Texas 77469
281-633-7500
3. This permit expires one (1) year from date of permit if construction has not commenced.

By: Charles O. Uy
for County Engineer

Presented to Commissioners Court and approved.

Recorded in Volume
4-26-16 13V
Minutes of Commissioners Court

By: N/A
Drainage District Engineer/Manager

Clerk of Commissioners Court

By: Janita Welles
Deputy

THIS DOCUMENT IS THE PROPERTY OF KIMLEY-HORN AND ASSOCIATES, P.C. IT IS TO BE USED ONLY FOR THE PROJECT AND SITE SPECIFIC PURPOSE AND NOT TO BE REPRODUCED OR TRANSMITTED IN ANY FORM OR BY ANY MEANS, ELECTRONIC OR MECHANICAL, INCLUDING PHOTOCOPYING, RECORDING, OR BY ANY INFORMATION STORAGE AND RETRIEVAL SYSTEM. ANY UNAUTHORIZED USE OF THIS DOCUMENT IS STRICTLY PROHIBITED. THE USER SHALL BE RESPONSIBLE FOR OBTAINING ALL NECESSARY PERMITS AND APPROVALS FROM THE APPROPRIATE AGENCIES. THE USER SHALL BE RESPONSIBLE FOR OBTAINING ALL NECESSARY PERMITS AND APPROVALS FROM THE APPROPRIATE AGENCIES. THE USER SHALL BE RESPONSIBLE FOR OBTAINING ALL NECESSARY PERMITS AND APPROVALS FROM THE APPROPRIATE AGENCIES.

- GENERAL NOTES**
1. ALL CONSTRUCTION SHALL BE IN ACCORDANCE WITH THE CITY OF FORT BEND COUNTY STANDARDS.
 2. ALL CONSTRUCTION SHALL BE IN ACCORDANCE WITH THE CITY OF FORT BEND COUNTY STANDARDS.
 3. ALL CONSTRUCTION SHALL BE IN ACCORDANCE WITH THE CITY OF FORT BEND COUNTY STANDARDS.
 4. ALL CONSTRUCTION SHALL BE IN ACCORDANCE WITH THE CITY OF FORT BEND COUNTY STANDARDS.
 5. ALL CONSTRUCTION SHALL BE IN ACCORDANCE WITH THE CITY OF FORT BEND COUNTY STANDARDS.
 6. ALL CONSTRUCTION SHALL BE IN ACCORDANCE WITH THE CITY OF FORT BEND COUNTY STANDARDS.
 7. ALL CONSTRUCTION SHALL BE IN ACCORDANCE WITH THE CITY OF FORT BEND COUNTY STANDARDS.
 8. ALL CONSTRUCTION SHALL BE IN ACCORDANCE WITH THE CITY OF FORT BEND COUNTY STANDARDS.
 9. ALL CONSTRUCTION SHALL BE IN ACCORDANCE WITH THE CITY OF FORT BEND COUNTY STANDARDS.
 10. ALL CONSTRUCTION SHALL BE IN ACCORDANCE WITH THE CITY OF FORT BEND COUNTY STANDARDS.
 11. ALL CONSTRUCTION SHALL BE IN ACCORDANCE WITH THE CITY OF FORT BEND COUNTY STANDARDS.
 12. ALL CONSTRUCTION SHALL BE IN ACCORDANCE WITH THE CITY OF FORT BEND COUNTY STANDARDS.
 13. ALL CONSTRUCTION SHALL BE IN ACCORDANCE WITH THE CITY OF FORT BEND COUNTY STANDARDS.
 14. ALL CONSTRUCTION SHALL BE IN ACCORDANCE WITH THE CITY OF FORT BEND COUNTY STANDARDS.
 15. ALL CONSTRUCTION SHALL BE IN ACCORDANCE WITH THE CITY OF FORT BEND COUNTY STANDARDS.
 16. ALL CONSTRUCTION SHALL BE IN ACCORDANCE WITH THE CITY OF FORT BEND COUNTY STANDARDS.
 17. ALL CONSTRUCTION SHALL BE IN ACCORDANCE WITH THE CITY OF FORT BEND COUNTY STANDARDS.
 18. ALL CONSTRUCTION SHALL BE IN ACCORDANCE WITH THE CITY OF FORT BEND COUNTY STANDARDS.
 19. ALL CONSTRUCTION SHALL BE IN ACCORDANCE WITH THE CITY OF FORT BEND COUNTY STANDARDS.
 20. ALL CONSTRUCTION SHALL BE IN ACCORDANCE WITH THE CITY OF FORT BEND COUNTY STANDARDS.

- EXISTING UTILITIES**
1. ALL EXISTING UTILITIES SHALL BE MAINTAINED AND PROTECTED.
 2. ALL EXISTING UTILITIES SHALL BE MAINTAINED AND PROTECTED.
 3. ALL EXISTING UTILITIES SHALL BE MAINTAINED AND PROTECTED.
 4. ALL EXISTING UTILITIES SHALL BE MAINTAINED AND PROTECTED.
 5. ALL EXISTING UTILITIES SHALL BE MAINTAINED AND PROTECTED.
 6. ALL EXISTING UTILITIES SHALL BE MAINTAINED AND PROTECTED.
 7. ALL EXISTING UTILITIES SHALL BE MAINTAINED AND PROTECTED.
 8. ALL EXISTING UTILITIES SHALL BE MAINTAINED AND PROTECTED.
 9. ALL EXISTING UTILITIES SHALL BE MAINTAINED AND PROTECTED.
 10. ALL EXISTING UTILITIES SHALL BE MAINTAINED AND PROTECTED.
 11. ALL EXISTING UTILITIES SHALL BE MAINTAINED AND PROTECTED.
 12. ALL EXISTING UTILITIES SHALL BE MAINTAINED AND PROTECTED.
 13. ALL EXISTING UTILITIES SHALL BE MAINTAINED AND PROTECTED.
 14. ALL EXISTING UTILITIES SHALL BE MAINTAINED AND PROTECTED.
 15. ALL EXISTING UTILITIES SHALL BE MAINTAINED AND PROTECTED.
 16. ALL EXISTING UTILITIES SHALL BE MAINTAINED AND PROTECTED.
 17. ALL EXISTING UTILITIES SHALL BE MAINTAINED AND PROTECTED.
 18. ALL EXISTING UTILITIES SHALL BE MAINTAINED AND PROTECTED.
 19. ALL EXISTING UTILITIES SHALL BE MAINTAINED AND PROTECTED.
 20. ALL EXISTING UTILITIES SHALL BE MAINTAINED AND PROTECTED.

- PROPOSED UTILITIES**
1. ALL PROPOSED UTILITIES SHALL BE INSTALLED AND PROTECTED.
 2. ALL PROPOSED UTILITIES SHALL BE INSTALLED AND PROTECTED.
 3. ALL PROPOSED UTILITIES SHALL BE INSTALLED AND PROTECTED.
 4. ALL PROPOSED UTILITIES SHALL BE INSTALLED AND PROTECTED.
 5. ALL PROPOSED UTILITIES SHALL BE INSTALLED AND PROTECTED.
 6. ALL PROPOSED UTILITIES SHALL BE INSTALLED AND PROTECTED.
 7. ALL PROPOSED UTILITIES SHALL BE INSTALLED AND PROTECTED.
 8. ALL PROPOSED UTILITIES SHALL BE INSTALLED AND PROTECTED.
 9. ALL PROPOSED UTILITIES SHALL BE INSTALLED AND PROTECTED.
 10. ALL PROPOSED UTILITIES SHALL BE INSTALLED AND PROTECTED.
 11. ALL PROPOSED UTILITIES SHALL BE INSTALLED AND PROTECTED.
 12. ALL PROPOSED UTILITIES SHALL BE INSTALLED AND PROTECTED.
 13. ALL PROPOSED UTILITIES SHALL BE INSTALLED AND PROTECTED.
 14. ALL PROPOSED UTILITIES SHALL BE INSTALLED AND PROTECTED.
 15. ALL PROPOSED UTILITIES SHALL BE INSTALLED AND PROTECTED.
 16. ALL PROPOSED UTILITIES SHALL BE INSTALLED AND PROTECTED.
 17. ALL PROPOSED UTILITIES SHALL BE INSTALLED AND PROTECTED.
 18. ALL PROPOSED UTILITIES SHALL BE INSTALLED AND PROTECTED.
 19. ALL PROPOSED UTILITIES SHALL BE INSTALLED AND PROTECTED.
 20. ALL PROPOSED UTILITIES SHALL BE INSTALLED AND PROTECTED.

- CONSTRUCTION NOTES**
1. ALL CONSTRUCTION SHALL BE IN ACCORDANCE WITH THE CITY OF FORT BEND COUNTY STANDARDS.
 2. ALL CONSTRUCTION SHALL BE IN ACCORDANCE WITH THE CITY OF FORT BEND COUNTY STANDARDS.
 3. ALL CONSTRUCTION SHALL BE IN ACCORDANCE WITH THE CITY OF FORT BEND COUNTY STANDARDS.
 4. ALL CONSTRUCTION SHALL BE IN ACCORDANCE WITH THE CITY OF FORT BEND COUNTY STANDARDS.
 5. ALL CONSTRUCTION SHALL BE IN ACCORDANCE WITH THE CITY OF FORT BEND COUNTY STANDARDS.
 6. ALL CONSTRUCTION SHALL BE IN ACCORDANCE WITH THE CITY OF FORT BEND COUNTY STANDARDS.
 7. ALL CONSTRUCTION SHALL BE IN ACCORDANCE WITH THE CITY OF FORT BEND COUNTY STANDARDS.
 8. ALL CONSTRUCTION SHALL BE IN ACCORDANCE WITH THE CITY OF FORT BEND COUNTY STANDARDS.
 9. ALL CONSTRUCTION SHALL BE IN ACCORDANCE WITH THE CITY OF FORT BEND COUNTY STANDARDS.
 10. ALL CONSTRUCTION SHALL BE IN ACCORDANCE WITH THE CITY OF FORT BEND COUNTY STANDARDS.
 11. ALL CONSTRUCTION SHALL BE IN ACCORDANCE WITH THE CITY OF FORT BEND COUNTY STANDARDS.
 12. ALL CONSTRUCTION SHALL BE IN ACCORDANCE WITH THE CITY OF FORT BEND COUNTY STANDARDS.
 13. ALL CONSTRUCTION SHALL BE IN ACCORDANCE WITH THE CITY OF FORT BEND COUNTY STANDARDS.
 14. ALL CONSTRUCTION SHALL BE IN ACCORDANCE WITH THE CITY OF FORT BEND COUNTY STANDARDS.
 15. ALL CONSTRUCTION SHALL BE IN ACCORDANCE WITH THE CITY OF FORT BEND COUNTY STANDARDS.
 16. ALL CONSTRUCTION SHALL BE IN ACCORDANCE WITH THE CITY OF FORT BEND COUNTY STANDARDS.
 17. ALL CONSTRUCTION SHALL BE IN ACCORDANCE WITH THE CITY OF FORT BEND COUNTY STANDARDS.
 18. ALL CONSTRUCTION SHALL BE IN ACCORDANCE WITH THE CITY OF FORT BEND COUNTY STANDARDS.
 19. ALL CONSTRUCTION SHALL BE IN ACCORDANCE WITH THE CITY OF FORT BEND COUNTY STANDARDS.
 20. ALL CONSTRUCTION SHALL BE IN ACCORDANCE WITH THE CITY OF FORT BEND COUNTY STANDARDS.

811
 Call before you dig.
 CALL BEFORE YOU DIG
 CALL 811 FOR UTILITY LOCATIONS
 CALL 811 FOR UTILITY LOCATIONS
 CALL 811 FOR UTILITY LOCATIONS

Kimley-Horn
 1512 WOODCHURCH LANE, SUITE 800, HOUSTON TEXAS 77059
 PHONE: 281-897-3000
 TEXAS REGISTERED ENGINEERING FIRM #428

IHP
 PROJECT NO: 09464008
 DATE: NOV. 2016
 SCALE: AS SHOWN
 DESIGNED BY: BOW
 DRAWN BY: JRM
 CHECKED BY: KLM

GENERAL NOTES

IHP-BELLA TERRA
 FORT BEND COUNTY, TX
 PREPARED FOR
 ACG TEXAS RESTAURANTS

SHEET NUMBER
 C-2



CALLED 346 ACRES
 TO WACHOVA BANK NATIONAL ASSOCIATION
 MEMORANDUM OF LEASE
 F.B.C.P. NO. 2006071769

BELLAIRE BOULEVARD
 R.O.W. VARIES
 (SIDE NO. 859.445, F.B.C.P.R.)

REMAINDER OF
 RESTRICTED RESERVE "A" BLOCK 1
 THE SHOPS AT BELLA TERRA SECTION ONE
 PLAT NO. 20070225, F.B.C.P.R.



811
 Know what's below.
 Call before you dig.

CAUTION!
 OPERATING AS A CONTRACTOR FOR THE STATE OF TEXAS. THIS IS NOT A LICENSE TO OPERATE AS A CONTRACTOR FOR THE STATE OF TEXAS.

APPROVED: [Signature]
 DATE: 12/27/07

IMPORTANT NOTES:
 1. THIS EROSION CONTROL PLAN IS SUBJECT TO THE EROSION CONTROL PLAN FOR THE PROJECT.
 2. ALL EROSION CONTROL MEASURES ARE TO BE INSTALLED IN ACCORDANCE WITH THE APPROVED CONSTRUCTION OF THE EROSION CONTROL PLAN AND THE APPROVED CONSTRUCTION OF THE EROSION CONTROL PLAN.
 3. THE EROSION CONTROL PLAN IS SUBJECT TO THE EROSION CONTROL PLAN FOR THE PROJECT.
 4. THE EROSION CONTROL PLAN IS SUBJECT TO THE EROSION CONTROL PLAN FOR THE PROJECT.
 5. THE EROSION CONTROL PLAN IS SUBJECT TO THE EROSION CONTROL PLAN FOR THE PROJECT.
 6. THE EROSION CONTROL PLAN IS SUBJECT TO THE EROSION CONTROL PLAN FOR THE PROJECT.
 7. THE EROSION CONTROL PLAN IS SUBJECT TO THE EROSION CONTROL PLAN FOR THE PROJECT.
 8. THE EROSION CONTROL PLAN IS SUBJECT TO THE EROSION CONTROL PLAN FOR THE PROJECT.
 9. THE EROSION CONTROL PLAN IS SUBJECT TO THE EROSION CONTROL PLAN FOR THE PROJECT.
 10. THE EROSION CONTROL PLAN IS SUBJECT TO THE EROSION CONTROL PLAN FOR THE PROJECT.

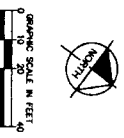
EROSION CONTROL SCHEDULE AND SEQUENCING

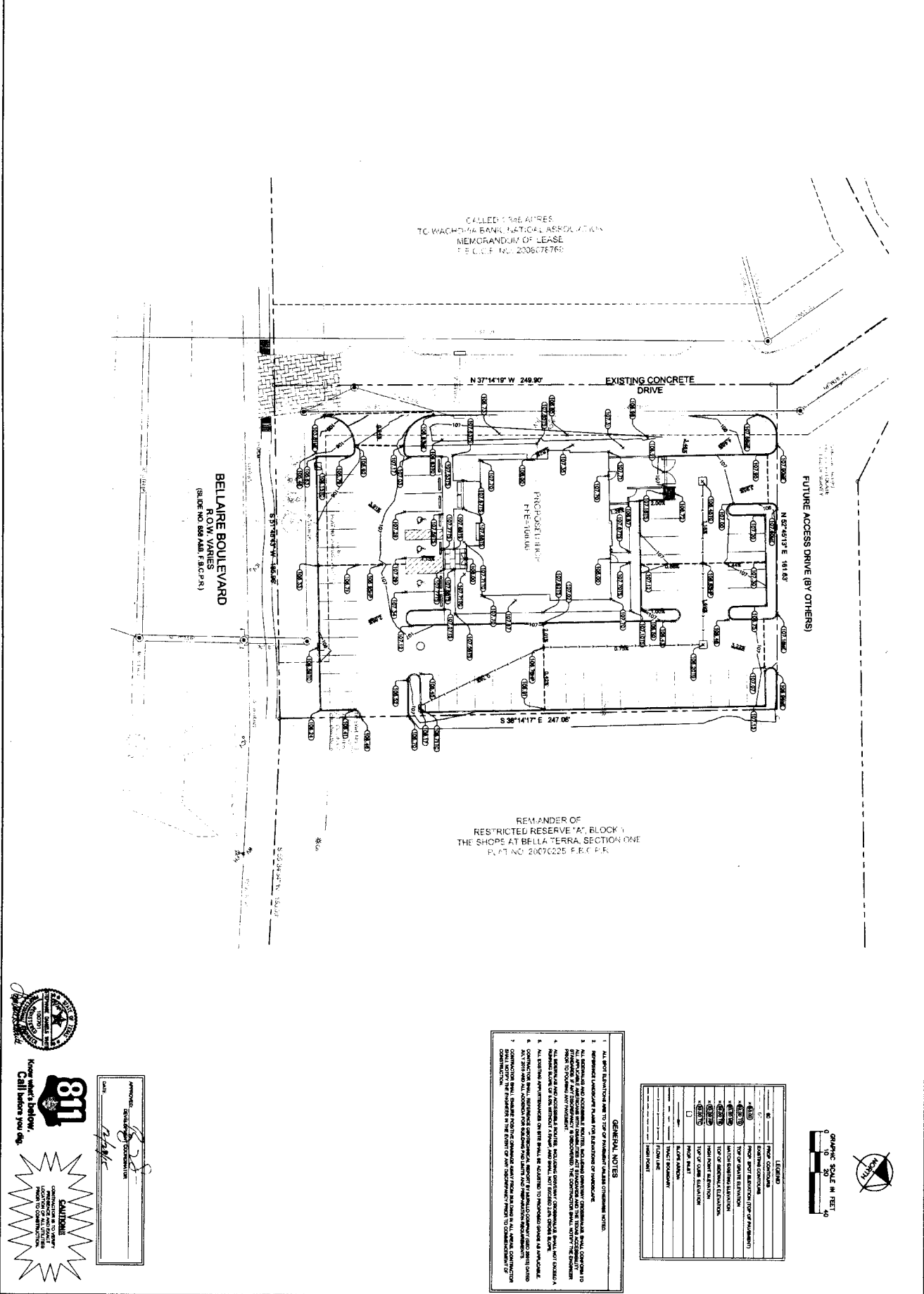
NO.	DESCRIPTION	SEQUENCING
1	STABILIZATION	IMMEDIATE
2	VEGETATION	IMMEDIATE
3	CONSTRUCTION OF EROSION CONTROL MEASURES	IMMEDIATE
4	MAINTENANCE OF EROSION CONTROL MEASURES	IMMEDIATE
5	REPAIR OF EROSION CONTROL MEASURES	IMMEDIATE
6	REMOVAL OF EROSION CONTROL MEASURES	IMMEDIATE

SHOULDER NOTES:
 THIS EROSION CONTROL PLAN IS SUBJECT TO THE EROSION CONTROL PLAN FOR THE PROJECT.
 THE EROSION CONTROL PLAN IS SUBJECT TO THE EROSION CONTROL PLAN FOR THE PROJECT.
 THE EROSION CONTROL PLAN IS SUBJECT TO THE EROSION CONTROL PLAN FOR THE PROJECT.

LEGEND

[Symbol]	CONSTRUCTION OF EROSION CONTROL MEASURES
[Symbol]	REPAIR OF EROSION CONTROL MEASURES
[Symbol]	REMOVAL OF EROSION CONTROL MEASURES
[Symbol]	STABILIZATION
[Symbol]	VEGETATION
[Symbol]	CONSTRUCTION OF EROSION CONTROL MEASURES
[Symbol]	REPAIR OF EROSION CONTROL MEASURES
[Symbol]	REMOVAL OF EROSION CONTROL MEASURES





CALLED: SHEET PAGES
 TO WACHOUGA BANK NATIONAL ASSOCIATION
 MEMORANDUM OF LEASE
 F.E.C. NO. 2006076766

BELLEAIRE BOULEVARD
 ROW VARIES
 (SIDE NO. 880 VARS. F.S.C.P. 8)

EXISTING CONCRETE DRIVE

FUTURE ACCESS DRIVE (BY OTHERS)

REMAINDER OF
 RESTRICTED RESERVE 'A', BLOCK 1
 THE SHOPS AT BELLA TERRA, SECTION ONE
 PLAT NO. 20070225 F.E.C.P.R.



811
 Know what's below.
 Call before you dig.



APPROVED: [Signature]
 DATE: 11/01/2016

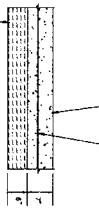
- GENERAL NOTES**
1. ALL SPOT ELEVATIONS ARE TO TOP OF FINISHED GRADE UNLESS OTHERWISE NOTED.
 2. REFER TO ALL DIMENSIONS TO FACE UNLESS OTHERWISE NOTED.
 3. ALL EXISTING AND PROPOSED ELEVATIONS, INCLUDING FINISHED GRADE, SHALL CONFORM TO THE PROPOSED GRADING PLAN. ANY DISCREPANCIES SHALL BE CORRECTED BY THE DESIGNER PRIOR TO CONSTRUCTION. THE CONTRACTOR SHALL VERIFY THE ELEVATIONS AND DIMENSIONS OF ALL EXISTING UTILITIES AND SHALL NOT EXCEED 24\"/>

NO.	DESCRIPTION	DATE
1	ISSUED FOR PERMIT	11/01/2016
2	ISSUED FOR PERMIT	11/01/2016
3	ISSUED FOR PERMIT	11/01/2016
4	ISSUED FOR PERMIT	11/01/2016
5	ISSUED FOR PERMIT	11/01/2016
6	ISSUED FOR PERMIT	11/01/2016
7	ISSUED FOR PERMIT	11/01/2016
8	ISSUED FOR PERMIT	11/01/2016
9	ISSUED FOR PERMIT	11/01/2016
10	ISSUED FOR PERMIT	11/01/2016



THIS DOCUMENT, TOGETHER WITH THE CONCEPTS AND DETAILS PRESENTED HEREIN, AS AN INSTRUMENT OF SERVICE, IS PREPARED ONLY FOR THE SPECIFIC PURPOSE AND CLIENT FOR WHICH IT WAS PREPARED. REUSE OF ANY AND ALL PORTIONS OF THIS DOCUMENT WITHOUT THE WRITTEN AUTHORIZATION AND ADAPTATION BY QUALITY HORN AND ASSOCIATES, INC. IS STRICTLY PROHIBITED. QUALITY HORN AND ASSOCIATES, INC. ACCEPTS NO LIABILITY TO ANY PARTY FOR ANY AND ALL DAMAGES, INCLUDING REASONABLE ATTORNEY'S FEES, ARISING FROM THE USE OF THIS DOCUMENT.

NOTE:
 1. ALL MATERIALS SHALL BE AS SHOWN ON THE DRAWING.
 2. ALL MATERIALS SHALL BE APPROVED BY THE ARCHITECT AND THE ENGINEER BEFORE INSTALLATION.
 3. ALL MATERIALS SHALL BE APPROVED BY THE ARCHITECT AND THE ENGINEER BEFORE INSTALLATION.
 4. ALL MATERIALS SHALL BE APPROVED BY THE ARCHITECT AND THE ENGINEER BEFORE INSTALLATION.
 5. ALL MATERIALS SHALL BE APPROVED BY THE ARCHITECT AND THE ENGINEER BEFORE INSTALLATION.
 6. ALL MATERIALS SHALL BE APPROVED BY THE ARCHITECT AND THE ENGINEER BEFORE INSTALLATION.
 7. ALL MATERIALS SHALL BE APPROVED BY THE ARCHITECT AND THE ENGINEER BEFORE INSTALLATION.
 8. ALL MATERIALS SHALL BE APPROVED BY THE ARCHITECT AND THE ENGINEER BEFORE INSTALLATION.
 9. ALL MATERIALS SHALL BE APPROVED BY THE ARCHITECT AND THE ENGINEER BEFORE INSTALLATION.
 10. ALL MATERIALS SHALL BE APPROVED BY THE ARCHITECT AND THE ENGINEER BEFORE INSTALLATION.



DUMPS/TER PAD CONCRETE PAVING SECTION DETAIL
 NOT TO SCALE

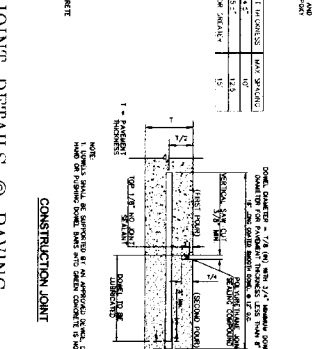
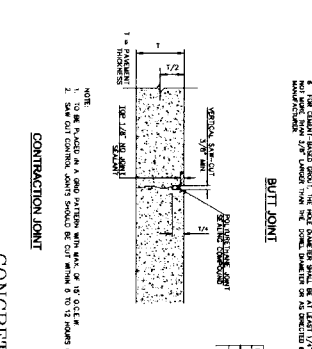
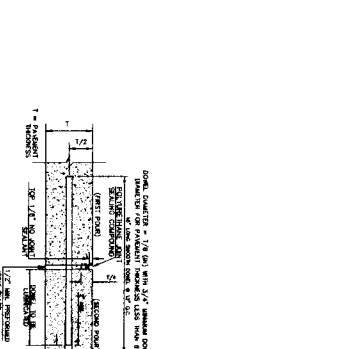
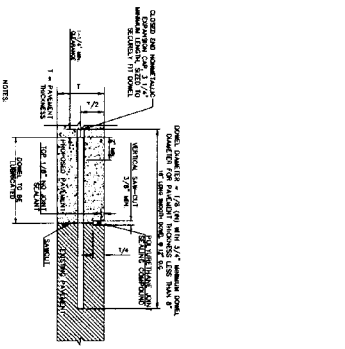
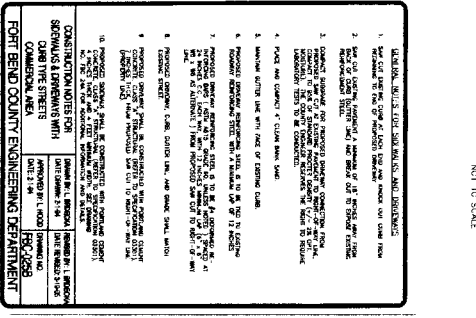
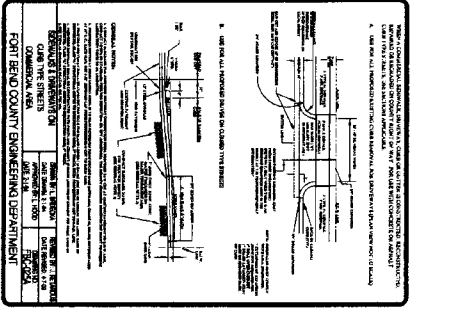
HEAVY DUTY CONCRETE PAVING SECTION DETAIL
 NOT TO SCALE

LIGHT DUTY CONCRETE PAVING SECTION DETAIL
 NOT TO SCALE

CONCRETE CURB DETAIL
 NOT TO SCALE

ACCESSIBLE PARKING SIGN
 NOT TO SCALE

ACCESSIBLE PARKING SYMBOL
 NOT TO SCALE



CONSTRUCTION NOTES FOR SIGNAGE & SYMBOLS WITH CURB THE SHEETS
 COMMON AREA

1. MATERIALS SHALL BE AS SHOWN ON THE DRAWING.
2. ALL MATERIALS SHALL BE APPROVED BY THE ARCHITECT AND THE ENGINEER BEFORE INSTALLATION.
3. ALL MATERIALS SHALL BE APPROVED BY THE ARCHITECT AND THE ENGINEER BEFORE INSTALLATION.
4. ALL MATERIALS SHALL BE APPROVED BY THE ARCHITECT AND THE ENGINEER BEFORE INSTALLATION.
5. ALL MATERIALS SHALL BE APPROVED BY THE ARCHITECT AND THE ENGINEER BEFORE INSTALLATION.
6. ALL MATERIALS SHALL BE APPROVED BY THE ARCHITECT AND THE ENGINEER BEFORE INSTALLATION.
7. ALL MATERIALS SHALL BE APPROVED BY THE ARCHITECT AND THE ENGINEER BEFORE INSTALLATION.
8. ALL MATERIALS SHALL BE APPROVED BY THE ARCHITECT AND THE ENGINEER BEFORE INSTALLATION.
9. ALL MATERIALS SHALL BE APPROVED BY THE ARCHITECT AND THE ENGINEER BEFORE INSTALLATION.
10. ALL MATERIALS SHALL BE APPROVED BY THE ARCHITECT AND THE ENGINEER BEFORE INSTALLATION.

CONSTRUCTION NOTES FOR SIGNAGE & SYMBOLS WITH CURB THE SHEETS
 COMMON AREA

1. MATERIALS SHALL BE AS SHOWN ON THE DRAWING.
2. ALL MATERIALS SHALL BE APPROVED BY THE ARCHITECT AND THE ENGINEER BEFORE INSTALLATION.
3. ALL MATERIALS SHALL BE APPROVED BY THE ARCHITECT AND THE ENGINEER BEFORE INSTALLATION.
4. ALL MATERIALS SHALL BE APPROVED BY THE ARCHITECT AND THE ENGINEER BEFORE INSTALLATION.
5. ALL MATERIALS SHALL BE APPROVED BY THE ARCHITECT AND THE ENGINEER BEFORE INSTALLATION.
6. ALL MATERIALS SHALL BE APPROVED BY THE ARCHITECT AND THE ENGINEER BEFORE INSTALLATION.
7. ALL MATERIALS SHALL BE APPROVED BY THE ARCHITECT AND THE ENGINEER BEFORE INSTALLATION.
8. ALL MATERIALS SHALL BE APPROVED BY THE ARCHITECT AND THE ENGINEER BEFORE INSTALLATION.
9. ALL MATERIALS SHALL BE APPROVED BY THE ARCHITECT AND THE ENGINEER BEFORE INSTALLATION.
10. ALL MATERIALS SHALL BE APPROVED BY THE ARCHITECT AND THE ENGINEER BEFORE INSTALLATION.

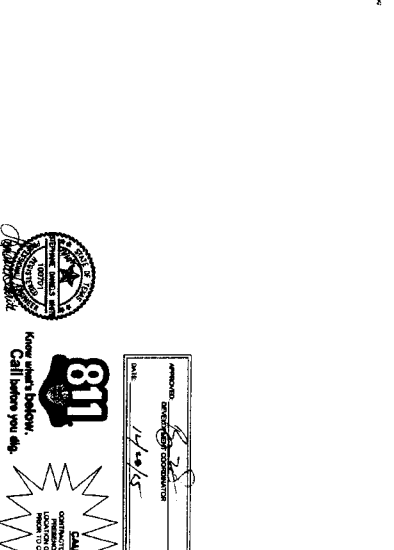
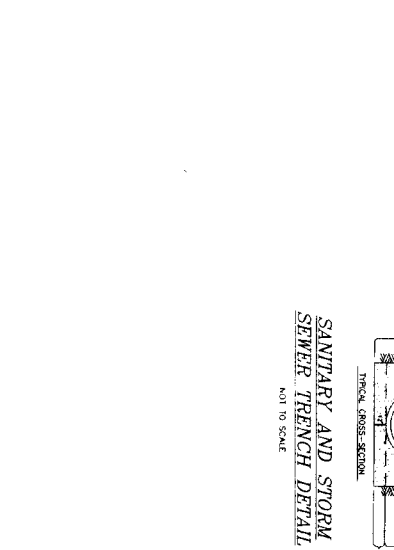
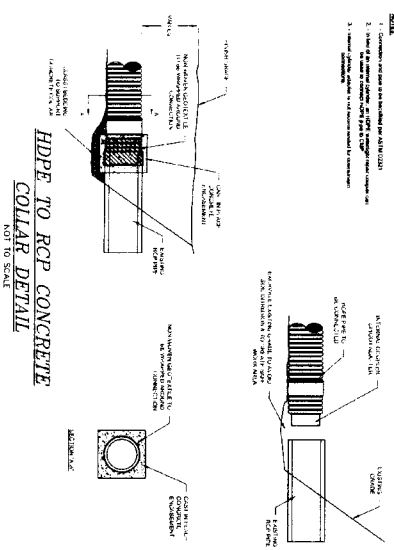
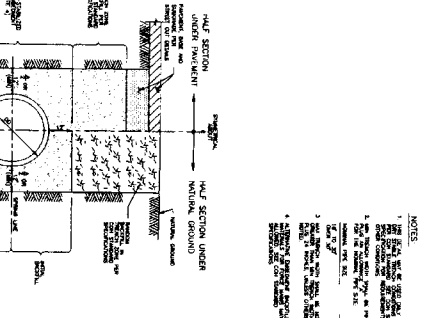
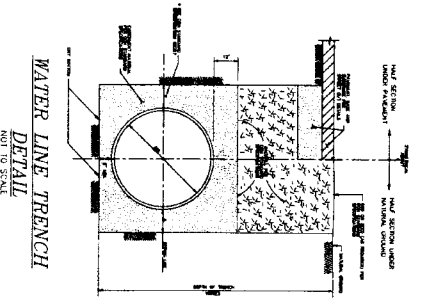
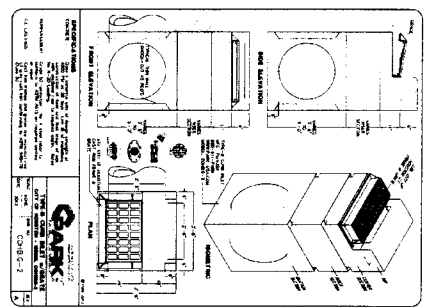
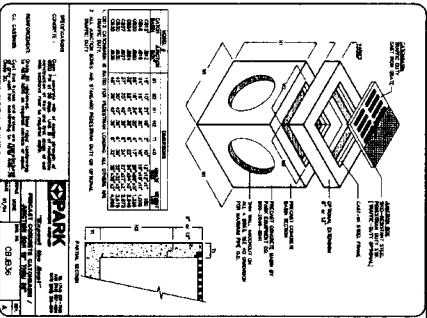
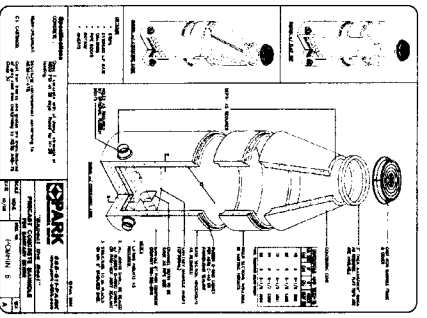
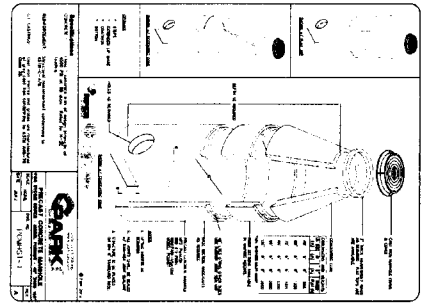
IHOP-BELLA TERRA
 FORT BEND COUNTY, TX
 PREPARED FOR
ACG TEXAS RESTAURANTS

CONSTRUCTION DETAILS
 (SHEET 1 OF 3)

PROJECT No. 2016-001
 DATE: NOV 2016
 SCALE: AS SHOWN
 DESIGNED BY: KJM
 DRAWN BY: KJM
 CHECKED BY: BOW

Kimley-Horn
 13012 WICKHESTER LANE, SUITE 600, HOUSTON, TEXAS 77079
 PHONE: 281-416-1100
 TEXAS REGISTERED ENGINEERING FIRM # 408

No.	REVISIONS	DATE	BY



NOTES:

1. SEE SHEET C-10 FOR TRENCH WALL AND BOTTOM DETAILS.
2. SEE SHEET C-10 FOR TRENCH WALL AND BOTTOM DETAILS.
3. SEE SHEET C-10 FOR TRENCH WALL AND BOTTOM DETAILS.
4. SEE SHEET C-10 FOR TRENCH WALL AND BOTTOM DETAILS.

811
 Know what's below. Call before you dig.
 CALL 811
 TEXAS
 UTILITY LOCATING SERVICE

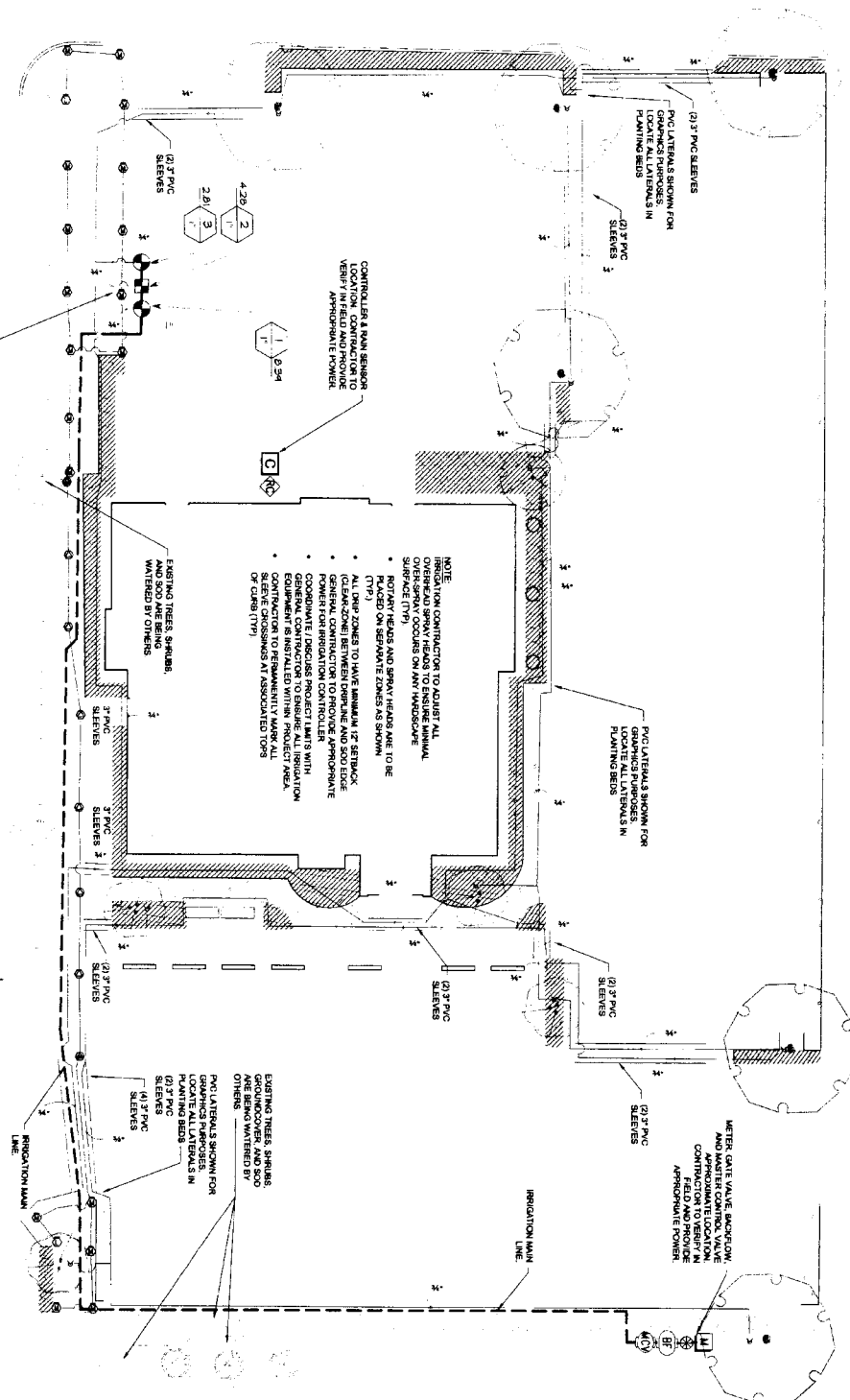
CAUTION!
 CONSTRUCTION OF THIS PROJECT IS SUBJECT TO THE APPROVAL OF THE LOCAL HEALTH DEPARTMENT. CONTACT YOUR LOCAL HEALTH DEPARTMENT FOR MORE INFORMATION.

IHOPELLA TERRA
 FORT BEND COUNTY, TX
 PREPARED FOR
ACG TEXAS RESTAURANTS

CONSTRUCTION DETAILS
 (SHEET 2 OF 3)

Kimley»Horn
 1212 WICKHESTER LANE, SUITE 500, HOUSTON, TEXAS 77079
 PHONE: 281-697-3000
 TEXAS REGISTERED ENGINEERING FIRM F-468

NO.	REVISIONS	DATE	BY



IRRIGATION SCHEDULE

STATION	VALVE	DESCRIPTION	DATE
1	1	VALVE 1	10/1/12
2	2	VALVE 2	10/1/12
3	3	VALVE 3	10/1/12
4	4	VALVE 4	10/1/12
5	5	VALVE 5	10/1/12
6	6	VALVE 6	10/1/12
7	7	VALVE 7	10/1/12
8	8	VALVE 8	10/1/12
9	9	VALVE 9	10/1/12
10	10	VALVE 10	10/1/12
11	11	VALVE 11	10/1/12
12	12	VALVE 12	10/1/12
13	13	VALVE 13	10/1/12
14	14	VALVE 14	10/1/12
15	15	VALVE 15	10/1/12
16	16	VALVE 16	10/1/12
17	17	VALVE 17	10/1/12
18	18	VALVE 18	10/1/12
19	19	VALVE 19	10/1/12
20	20	VALVE 20	10/1/12

VALVE SCHEDULE

STATION	VALVE	DESCRIPTION	DATE
1	1	VALVE 1	10/1/12
2	2	VALVE 2	10/1/12
3	3	VALVE 3	10/1/12
4	4	VALVE 4	10/1/12
5	5	VALVE 5	10/1/12
6	6	VALVE 6	10/1/12
7	7	VALVE 7	10/1/12
8	8	VALVE 8	10/1/12
9	9	VALVE 9	10/1/12
10	10	VALVE 10	10/1/12
11	11	VALVE 11	10/1/12
12	12	VALVE 12	10/1/12
13	13	VALVE 13	10/1/12
14	14	VALVE 14	10/1/12
15	15	VALVE 15	10/1/12
16	16	VALVE 16	10/1/12
17	17	VALVE 17	10/1/12
18	18	VALVE 18	10/1/12
19	19	VALVE 19	10/1/12
20	20	VALVE 20	10/1/12



APPROVED: *[Signature]*
 PROJECT COORDINATOR

CAUTION!
 CONTRACTOR IS TO VERIFY LOCATION OF ALL UTILITIES PRIOR TO ANY EXCAVATION WORK.

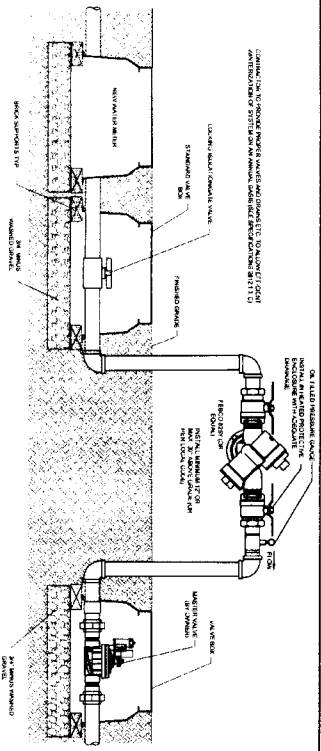
Know what's below. Call before you dig.

IRRIGATION PLAN

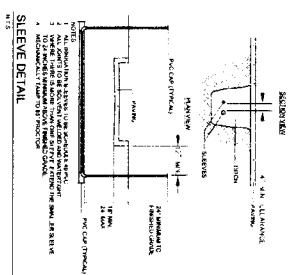
PROJECT No: 064455408
 DATE: SEPT 2012
 SCALE: AS SHOWN
 DESIGNED BY: SDW
 DRAWN BY: KLM
 CHECKED BY: SDW

ihop Kimley-Horn
 12012 WACCHESTER LANE, SUITE 500, HOUSTON, TEXAS 77078
 PHONE: 281-867-3000
 TEXAS REGISTERED ENGINEERING FIRM # 608

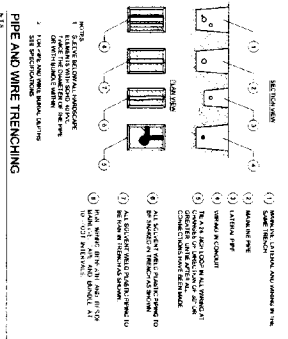
No	REVISIONS	DATE	BY



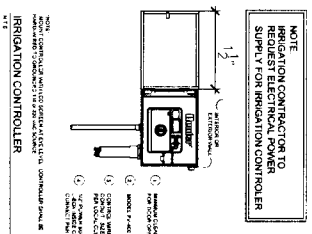
RPZ ASSEMBLY BACKFLOW PREVENTER



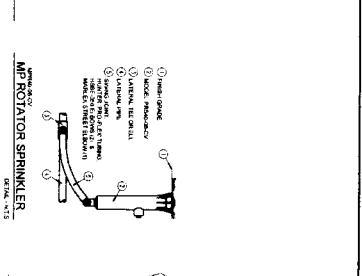
SIEVE DETAIL



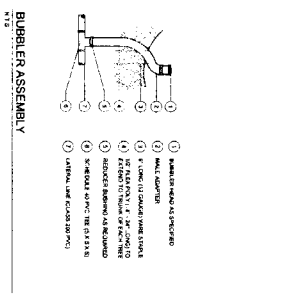
PIPE AND WIRE TRENCHING



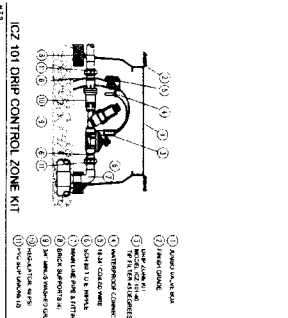
IRRIGATION CONTROLLER



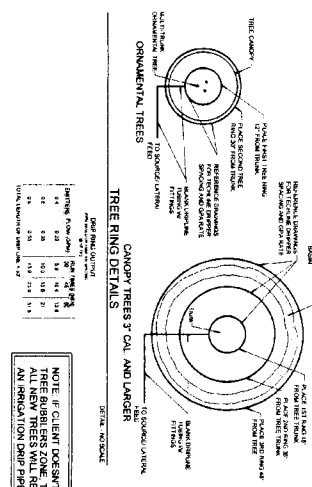
RAIN SENSOR



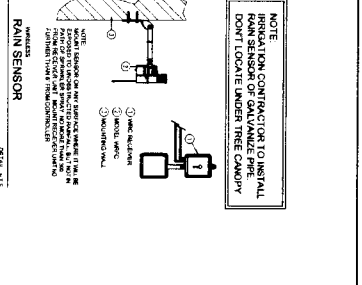
BUBBLER ASSEMBLY



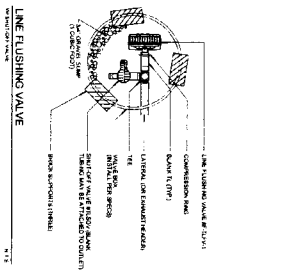
ICZ 101 DRIP CONTROL ZONE KIT



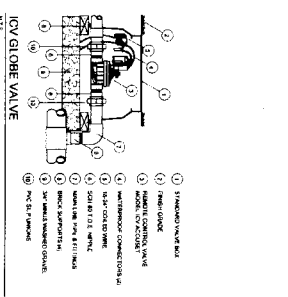
TREE RING DETAILS



AIR/FACTOR SPRINKLER



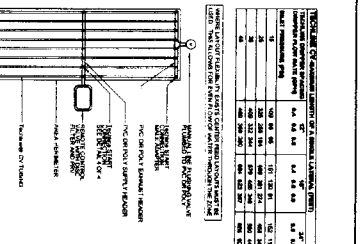
LINE FLUSHING VALVE



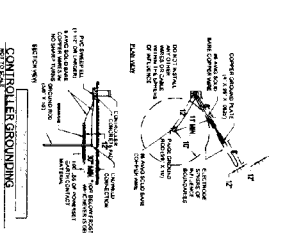
ICV GLOBE VALVE



CONTROLLER GROUNDING



Iridium CV CENTER FEED LAYOUT



AIR/VACUUM RELIEF

811 Know what's below. Call before you dig.

CAUTION! CALL BEFORE YOU DIG. CALL 811 TO REPORT ANY UTILITIES BEFORE YOU BEGIN ANY CONSTRUCTION.

APPROVED BY: [Signature]

DATE: [Date]

PROJECT NO. [Number]

DATE: SEPT 2015

SCALE: AS SHOWN

DESIGNED BY: SDW

DRAWN BY: KJM

CHECKED BY: SDW

**PERFORMANCE BOND COVERING ALL CABLE, CONDUIT AND/OR POLE LINE
ACTIVITY IN, UNDER, ACROSS OR ALONG FORT BEND COUNTY ROAD**

AUTHORIZED

BOND NO. 09114246

THE STATE OF TEXAS

§

KNOW ALL MEN BY THESE PRESENTS:

COUNTY OF FORT BEND

§

THAT WE, EBCO General Contractors, Ltd. whose address is 305 W. Gillis Ave., Cameron, TX 76520 Texas, hereinafter called the Principal, And Fidelity and Deposit Company of Maryland, a Corporation existing under and by virtue of the laws of the state of Maryland and authorized to do an indemnifying business in the state of Texas, and whose principal office is located at 600 Red Brook Blvd., Suite 600, Owings Mills, MD 21117, whose officer residing in the State of Texas, authorized to accept service in all suits and actions brought whining said state is Tim Champagne and Whose address is 15303 Dallas Pkwy, #800, Addison, TX 75001, hereinafter called the Surety, and held and firmly bound unto, Robert e. Hebert, County Judge of Fort Bend County, Texas, or his successors in office, in the full sum of Five Thousand & No/100 Dollars (\$ 5,000.00) current, lawful money of the United States of America, to be paid to said Robert E. Hebert, County Judge of Fort Bend County, Texas, or his successors in office, to which payment well and truly to be made and done, we, the undersigned, bind ourselves and each of us, our heirs, executors, administrators, successors, assigns, and legal representatives, jointly and severally, by these presents.

THE CONDITION OF THIS BOND IS SUCH THAT, WHEREAS, the above bounden principal contemplates laying, constructing, maintaining and/or repairing one or more cables, conduits, and/or pole lines in, under, across and/or along roads, streets and highways, commercial driveway and median openings or modifications in the County of Fort Bend, and the State of Texas, under the jurisdiction of the Commissioners' Court of Fort Bend County, Texas, pursuant to the Commissioners' Court order adopted on the 1st day of December, A.D. 1980, recorded in Volume 13, of the Commissioners' Court Minutes of Fort Bend County, Texas, regulating same, which Commissioners' Court order is hereby referred to and made a part hereof for all purposes as though fully set out herein;

AND WHEREAS, the principal desires to provide Fort Bend County with a performance bond covering all such cable, conduit and/or pole line activity, commercial driveway and median openings or modifications;

NOW, THEREFORE, if the above bounden principal shall faithfully perform all its cable, conduit and/or pole line activity (including, but not limited to the laying, construction, maintenance and/or repair of cables, conduits and/or pole lines) in, under, across and/or along roads, streets and highways, commercial driveway and median openings or modifications in the County of Fort Bend and State of Texas, under the jurisdiction of the Commissioners Court of Fort Bend County, Texas, pursuant to and in accordance with minimum requirements and conditions of the above mentioned Commissioners' Court order set forth and specified to be by said principal done and performed, at the time and in the manner therein specified, and shall pay over and make good and reimburse Fort Bend County, all loss and damages which Fort Bend County may sustain by reason of any failure or default on the part of said principal, then this obligation shall be null and void, otherwise to remain in full force and effect.

This bond is payable at the County Courthouse in the County of Fort Bend and State of Texas.

It is understood that at any time Fort Bend County deems itself insecure under this bond, it may require further and/or additional bonds of the principal.

EXECUTED this 30th day of March, 20 16.

EBCO General Contractor, Ltd.
PRINCIPAL
[Signature]
BY
Fidelity and Deposit Company of Maryland
SURETY
[Signature]
BY Dawn Davis, Attorney-in-Fact



Fidelity and Deposit Company of Maryland

Home Office: P.O. Box 1227, Baltimore, MD 21203-1227

IMPORTANT NOTICE

To obtain information or make a complaint:

You may call the Fidelity and Deposit Company of Maryland or Colonial American Casualty and Surety Company's toll-free telephone number for information or to make a complaint at:

1-800-654-5155

You may contact the Texas Department of Insurance to obtain information on companies, coverages, rights, or complaints at:

1-800-252-3439

You may write the Texas Department of Insurance:

**P.O. Box 149104
Austin, TX 78714-9104
FAX # (512) 475-1771**

PREMIUM OR CLAIM DISPUTES: Should you have a dispute concerning the premium or about a claim, you should first contact Fidelity and Deposit Company of Maryland or Colonial American Casualty and Surety Company. If the dispute is not resolved, you may contact the Texas Department of Insurance.

ATTACH THIS NOTICE TO YOUR POLICY: This notice is for information only and does not become a part or condition of the attached document.

**ZURICH AMERICAN INSURANCE COMPANY
COLONIAL AMERICAN CASUALTY AND SURETY COMPANY
FIDELITY AND DEPOSIT COMPANY OF MARYLAND
POWER OF ATTORNEY**

KNOW ALL MEN BY THESE PRESENTS: That the ZURICH AMERICAN INSURANCE COMPANY, a corporation of the State of New York, the COLONIAL AMERICAN CASUALTY AND SURETY COMPANY, a corporation of the State of Maryland, and the FIDELITY AND DEPOSIT COMPANY OF MARYLAND a corporation of the State of Maryland (herein collectively called the "Companies"), by **THOMAS O. MCCLELLAN, Vice President**, in pursuance of authority granted by Article V, Section 8, of the By-Laws of said Companies, which are set forth on the reverse side hereof and are hereby certified to be in full force and effect on the date hereof, do hereby nominate, constitute, and appoint **John D. FULKERSON, Kae PERDUE, Dennis DOWD, Donnie D. DOAN, Debbie SMITH, Kristi MEEK, Dawn DAVIS and Walter J. DELAROSA, all of Dallas, Texas, EACH** its true and lawful agent and Attorney-in-Fact, to make, execute, seal and deliver, for, and on its behalf as surety, and as its act and deed: **any and all bonds and undertakings, EXCEPT bonds on behalf of Independent Executors, Community Survivors and Community Guardians.** and the execution of such bonds or undertakings in pursuance of these presents, shall be as binding upon said Companies, as fully and amply, to all intents and purposes, as if they had been duly executed and acknowledged by the regularly elected officers of the ZURICH AMERICAN INSURANCE COMPANY at its office in New York, New York., the regularly elected officers of the COLONIAL AMERICAN CASUALTY AND SURETY COMPANY at its office in Owings Mills, Maryland., and the regularly elected officers of the FIDELITY AND DEPOSIT COMPANY OF MARYLAND at its office in Owings Mills, Maryland., in their own proper persons.

The said Vice President does hereby certify that the extract set forth on the reverse side hereof is a true copy of Article V, Section 8, of the By-Laws of said Companies, and is now in force.

IN WITNESS WHEREOF, the said Vice-President has hereunto subscribed his/her names and affixed the Corporate Seals of the said ZURICH AMERICAN INSURANCE COMPANY, COLONIAL AMERICAN CASUALTY AND SURETY COMPANY, and FIDELITY AND DEPOSIT COMPANY OF MARYLAND, this 23rd day of November, A.D. 2015.

ATTEST:

**ZURICH AMERICAN INSURANCE COMPANY
COLONIAL AMERICAN CASUALTY AND SURETY COMPANY
FIDELITY AND DEPOSIT COMPANY OF MARYLAND**



By: Eric D. Barnes
Eric D. Barnes
Secretary
Eric D. Barnes

Thomas O. McClellan
Thomas O. McClellan
Vice President
Thomas O. McClellan

State of Maryland
County of Baltimore

On this 23rd day of November, A.D. 2015, before the subscriber, a Notary Public of the State of Maryland, duly commissioned and qualified, **THOMAS O. MCCLELLAN, Vice President, and ERIC D. BARNES, Secretary**, of the Companies, to me personally known to be the individuals and officers described in and who executed the preceding instrument, and acknowledged the execution of same, and being by me duly sworn, depose and saith, that he/she is the said officer of the Company aforesaid, and that the seals affixed to the preceding instrument are the Corporate Seals of said Companies, and that the said Corporate Seals and the signature as such officer were duly affixed and subscribed to the said instrument by the authority and direction of the said Corporations.

IN TESTIMONY WHEREOF, I have hereunto set my hand and affixed my Official Seal the day and year first above written.

Maria D. Adamski
Maria D. Adamski
Maria D. Adamski, Notary Public
My Commission Expires: July 8, 2019



EXTRACT FROM BY-LAWS OF THE COMPANIES

"Article V, Section 8, Attorneys-in-Fact. The Chief Executive Officer, the President, or any Executive Vice President or Vice President may, by written instrument under the attested corporate seal, appoint attorneys-in-fact with authority to execute bonds, policies, recognizances, stipulations, undertakings, or other like instruments on behalf of the Company, and may authorize any officer or any such attorney-in-fact to affix the corporate seal thereto; and may with or without cause modify or revoke any such appointment or authority at any time."

CERTIFICATE

I, the undersigned, Vice President of the ZURICH AMERICAN INSURANCE COMPANY, the COLONIAL AMERICAN CASUALTY AND SURETY COMPANY, and the FIDELITY AND DEPOSIT COMPANY OF MARYLAND, do hereby certify that the foregoing Power of Attorney is still in full force and effect on the date of this certificate; and I do further certify that Article V, Section 8, of the By-Laws of the Companies is still in force.

This Power of Attorney and Certificate may be signed by facsimile under and by authority of the following resolution of the Board of Directors of the ZURICH AMERICAN INSURANCE COMPANY at a meeting duly called and held on the 15th day of December 1998.

RESOLVED: "That the signature of the President or a Vice President and the attesting signature of a Secretary or an Assistant Secretary and the Seal of the Company may be affixed by facsimile on any Power of Attorney...Any such Power or any certificate thereof bearing such facsimile signature and seal shall be valid and binding on the Company."

This Power of Attorney and Certificate may be signed by facsimile under and by authority of the following resolution of the Board of Directors of the COLONIAL AMERICAN CASUALTY AND SURETY COMPANY at a meeting duly called and held on the 5th day of May, 1994, and the following resolution of the Board of Directors of the FIDELITY AND DEPOSIT COMPANY OF MARYLAND at a meeting duly called and held on the 10th day of May, 1990.

RESOLVED: "That the facsimile or mechanically reproduced seal of the company and facsimile or mechanically reproduced signature of any Vice-President, Secretary, or Assistant Secretary of the Company, whether made heretofore or hereafter, wherever appearing upon a certified copy of any power of attorney issued by the Company, shall be valid and binding upon the Company with the same force and effect as though manually affixed.

IN TESTIMONY WHEREOF, I have hereunto subscribed my name and affixed the corporate seals of the said Companies, this 30th day of March, 2016.



A handwritten signature in black ink that reads "Michael Bond".

Michael Bond, Vice President