

REVIEW BY FORT BEND COUNTY COMMISSIONERS COURT

On this 8th day of March, 2016, Commissioners Court came on to be heard and reviewed the accompanying notice of LECON, Inc.

Job Location 2400 Windswept Dr, Richmond, TX 77406

Date 2/22/2016 Bond No. no bond required, Permit No. 2016-5640 to make use of certain Fort Bend County property subject to, "A Revised Order Regulating the Laying, Construction, Maintenance, and Repair of Buried Cables, Conduits, and Pole Lines, In, Under, Across or Along Roads, Streets, Highways, and Drainage Ditches in Fort Bend County, Texas, Under the Jurisdiction of the Commissioners Court of Fort Bend County, Texas," as passed by the Commissioners Court of Fort Bend County, Texas the 3rd day of August, 1987, recorded in Volume _____ of the Minutes of the Commissioners Court of Fort Bend County, Texas, to the extent that such order is not inconsistent with Article 1436a, Vernon's Texas Civil Statutes. Upon Motion of Commissioner Meyus, seconded by Commissioner Patterson, duly put and carried, it is ORDERED, ADJUDGED AND DECREED that said notice of said above purpose is hereby acknowledged by the Commissioners Court of Fort Bend County, Texas, and that said notice be placed on record according to the regulation order thereof.

Notes:

1. Evidence of review by the Commissioners Court must be kept on the job site and failure to do so constitutes grounds for job shutdown.
2. Written notices are required:
 - a. 48 hours in advance of construction start up, and
 - b. when construction is completed and ready for final inspection

Mail notices to: Permit Administrator
Fort Bend County Engineering
301 Jackson Street
Richmond, Texas 77469
281-633-7500
3. This permit expires one (1) year from date of permit if construction has not commenced.

By: C. Charles O. Duff
for County Engineer

Presented to Commissioners Court and approved.
Recorded in Volume 3-08-16 12H
Minutes of Commissioners Court

By: N/A
Drainage District Engineer/Manager

Clerk of Commissioners Court
By: Sandra White
Deputy

CONSTRUCTION OF THE GROVE 4 & 5 DRAINAGE IMPROVEMENTS IN FORT BEND COUNTY, TEXAS FOR

PECAN GROVE MUNICIPAL UTILITY DISTRICT

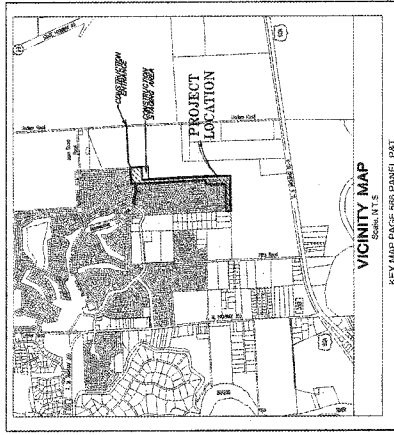
INDEX OF DRAWINGS

| SHEET No. | TITLE |
|-----------|---|
| 1 | COVER SHEET & INDEX |
| 2 | PROJECT OVERALL & PREVENTION PREVENTION DETAILS |
| 3 | CONSTRUCTION NOTES |
| 4 | PLAN & PROFILE BASELINE A |
| 5 | PLAN & PROFILE BASELINE B |
| 6 | PLAN & PROFILE BASELINE C |
| 7 | PLAN & PROFILE BASELINE D |
| 8 | PLAN & PROFILE BASELINE E |
| 9 | PLAN & PROFILE BASELINE F |
| 10 | PLAN & PROFILE BASELINE G |
| 11 | PLAN & PROFILE BASELINE H |
| 12 | PLAN & PROFILE BASELINE I |
| 13 | PLAN & PROFILE BASELINE J |
| 14 | PLAN & PROFILE BASELINE K |
| 15 | PLAN & PROFILE BASELINE L |
| 16 | PLAN & PROFILE BASELINE M |
| 17 | PLAN & PROFILE BASELINE N |
| 18 | MISCELLANEOUS DETAILS |
| 19 | CITY OF RICHMOND STANDARD CONSTRUCTION DETAILS - STORM SEWER |
| 20 | CITY OF RICHMOND STANDARD CONSTRUCTION DETAILS - SANITARY SEWER |
| 21 | CITY OF RICHMOND STANDARD CONSTRUCTION DETAILS - PAVING I |
| 22 | CITY OF RICHMOND STANDARD CONSTRUCTION DETAILS - PAVING II |
| 23 | TRAFFIC CONTROL PLAN |

CITY OF RICHMOND, TEXAS
APPROVED BY:

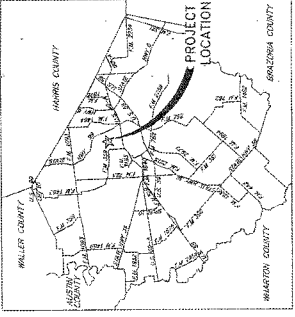
[Signature]
DATE: 11/11/14
[Signature]
DATE: 11/11/14

NOTE: Approvals Void After One Year From Date Signed. (Consultation file: Not Begun.)



JONES & CARTER, INC. PROJECT NUMBER 00034-0388-01
NOVEMBER 2014

JC JONES & CARTER, INC.
Professional Engineer Registration No. 12-229
10000 Highway 100, Houston, Texas 77031 (409) 340-3200



NOTES:
These plans have been prepared to meet or exceed the specifications and requirements of City of Richmond and Fort Bend County as currently annotated.
Approval by Fort Bend County will be deemed void if construction has not begun within one year of approval date.
Construction will be monitored under the supervision of a licensed professional engineer of JONES & CARTER, INC.
Contractor shall notify the Fort Bend County Engineering Department at least 48 hours prior to commencement at construction@fortbendcountytx.gov.

1. Change of Professional Engineer Approved in the State of Texas on 11/12/14.
2. Change of Professional Engineer Approved in the State of Texas on 11/12/14.
3. Change of Professional Engineer Approved in the State of Texas on 11/12/14.



CALL BEFORE YOU DIG!!
TEXAS 811 (988 TESS)
LONE STAR NOTIFICATION CENTER
1-800-832-8344

BID SET ONLY
NOT FOR CONSTRUCTION

FORT BEND COUNTY ENGINEER
ENGINEER: *[Signature]*
DATE: 12/2/14
THIS SIGNATURE IS VALID FOR CONSTRUCTION
HAS NOT COMMENCED IN ONE (1) YEAR FROM
DATE OF APPROVAL

APPROVED: *[Signature]*
DATE: 12/2/14

PECAN GROVE MUNICIPAL UTILITY DISTRICT

PECAN GROVE MUNICIPAL UTILITY DISTRICT ENGINEER
DATE: 11-9-14
SIGNATURE VALID FOR ONE (1) YEAR

BERCHENSK

THE GROVE SECTION 5
 THE Alignment of Concrete Block Storm Drainage
 along the 10' Right of Way of the Pecan Grove
 Level, as shown on the attached plan sheet
 dated 11/21/14.

TABLE 1
 ELEVATION = 30.00'
 (11/21/14)

TABLE 2
 ELEVATION = 30.00'
 (11/21/14)

TABLE 3
 ELEVATION = 30.00'
 (11/21/14)

TABLE 4
 ELEVATION = 30.00'
 (11/21/14)

TABLE 5
 ELEVATION = 30.00'
 (11/21/14)

TABLE 6
 ELEVATION = 30.00'
 (11/21/14)

TABLE 7
 ELEVATION = 30.00'
 (11/21/14)

TABLE 8
 ELEVATION = 30.00'
 (11/21/14)

TABLE 9
 ELEVATION = 30.00'
 (11/21/14)

TABLE 10
 ELEVATION = 30.00'
 (11/21/14)

TABLE 11
 ELEVATION = 30.00'
 (11/21/14)

TABLE 12
 ELEVATION = 30.00'
 (11/21/14)

TABLE 13
 ELEVATION = 30.00'
 (11/21/14)

TABLE 14
 ELEVATION = 30.00'
 (11/21/14)

TABLE 15
 ELEVATION = 30.00'
 (11/21/14)

TABLE 16
 ELEVATION = 30.00'
 (11/21/14)

TABLE 17
 ELEVATION = 30.00'
 (11/21/14)

TABLE 18
 ELEVATION = 30.00'
 (11/21/14)

TABLE 19
 ELEVATION = 30.00'
 (11/21/14)

TABLE 20
 ELEVATION = 30.00'
 (11/21/14)

TABLE 21
 ELEVATION = 30.00'
 (11/21/14)

TABLE 22
 ELEVATION = 30.00'
 (11/21/14)

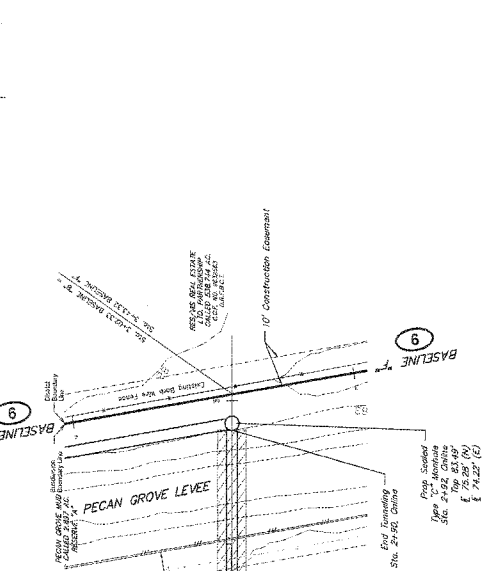
TABLE 23
 ELEVATION = 30.00'
 (11/21/14)

TABLE 24
 ELEVATION = 30.00'
 (11/21/14)

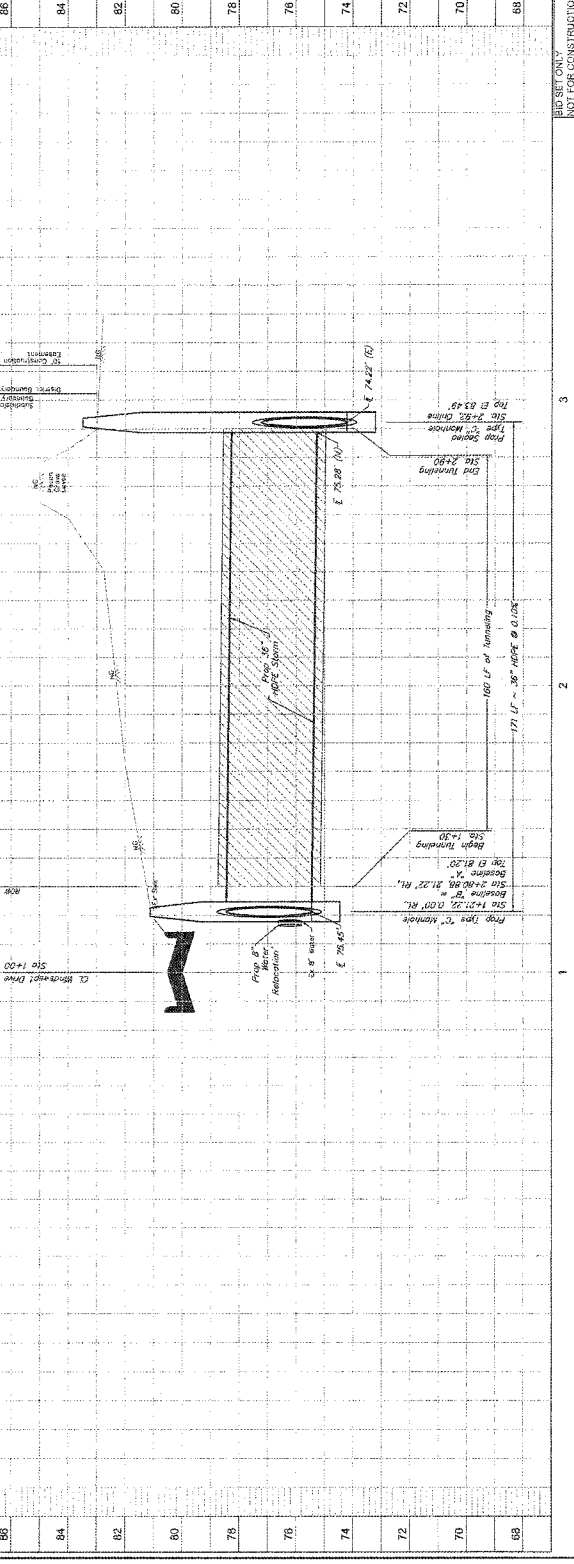
TABLE 25
 ELEVATION = 30.00'
 (11/21/14)

TABLE 26
 ELEVATION = 30.00'
 (11/21/14)

TABLE 27
 ELEVATION = 30.00'
 (11/21/14)



**BASELINE B
 (BASE BID)**



88
84
82
80
78
76
74
72
70
68

1+00 1+10 1+20 1+30 1+40 1+50

Prop. 17.5 LF of 36" HDPE Storm Drain
 Invert = 78.45'
 Station = 1+00.00'

Prop. 17.5 LF of 36" HDPE Storm Drain
 Invert = 79.45'
 Station = 1+17.50'

Prop. 17.5 LF of 36" HDPE Storm Drain
 Invert = 80.45'
 Station = 1+35.00'

Prop. 17.5 LF of 36" HDPE Storm Drain
 Invert = 81.45'
 Station = 1+52.50'

Prop. 17.5 LF of 36" HDPE Storm Drain
 Invert = 82.45'
 Station = 1+70.00'

Prop. 17.5 LF of 36" HDPE Storm Drain
 Invert = 83.45'
 Station = 1+87.50'

Prop. 17.5 LF of 36" HDPE Storm Drain
 Invert = 84.45'
 Station = 1+105.00'

Prop. 17.5 LF of 36" HDPE Storm Drain
 Invert = 85.45'
 Station = 1+122.50'

Prop. 17.5 LF of 36" HDPE Storm Drain
 Invert = 86.45'
 Station = 1+140.00'

Prop. 17.5 LF of 36" HDPE Storm Drain
 Invert = 87.45'
 Station = 1+157.50'

Prop. 17.5 LF of 36" HDPE Storm Drain
 Invert = 88.45'
 Station = 1+175.00'

APPROVED: *[Signature]* DATE: 11/21/14

PROJECT: THE GROVE SECTION 5
 DRAINAGE IMPROVEMENTS
 BASELINE B
 STA 1+00 - 3+50

PEACAN GROVE MUNICIPAL UTILITY DISTRICT
 FORT BEND COUNTY, TEXAS

J.C. JONES & CARTER, INC.
 ENGINEERS - PLANNERS - SURVEYORS
 10000 Katy Road, Suite 1000, Houston, TX 77055

SCALE: 1" = 20' H, 1" = 5' V

DRAWN BY: CJD
 CHECKED BY: CJD
 DATE: 11/21/14

PROJECT NO.: 14-0000000000

SHEET NO.: 5 OF 21

NOT FOR CONSTRUCTION

REVISIONS

1. E.M. Carter, Inc. (MVD 88)
 2. J.M. Jones & Carter, Inc. (MVD 88)

3. J.M. Jones & Carter, Inc. (MVD 88)
 4. J.M. Jones & Carter, Inc. (MVD 88)

5. J.M. Jones & Carter, Inc. (MVD 88)
 6. J.M. Jones & Carter, Inc. (MVD 88)

7. J.M. Jones & Carter, Inc. (MVD 88)
 8. J.M. Jones & Carter, Inc. (MVD 88)

1. E.M. Carter, Inc. (MVD 88)
 2. J.M. Jones & Carter, Inc. (MVD 88)

3. J.M. Jones & Carter, Inc. (MVD 88)
 4. J.M. Jones & Carter, Inc. (MVD 88)

5. J.M. Jones & Carter, Inc. (MVD 88)
 6. J.M. Jones & Carter, Inc. (MVD 88)

7. J.M. Jones & Carter, Inc. (MVD 88)
 8. J.M. Jones & Carter, Inc. (MVD 88)

1. E.M. Carter, Inc. (MVD 88)
 2. J.M. Jones & Carter, Inc. (MVD 88)

3. J.M. Jones & Carter, Inc. (MVD 88)
 4. J.M. Jones & Carter, Inc. (MVD 88)

5. J.M. Jones & Carter, Inc. (MVD 88)
 6. J.M. Jones & Carter, Inc. (MVD 88)

7. J.M. Jones & Carter, Inc. (MVD 88)
 8. J.M. Jones & Carter, Inc. (MVD 88)

1. E.M. Carter, Inc. (MVD 88)
 2. J.M. Jones & Carter, Inc. (MVD 88)

3. J.M. Jones & Carter, Inc. (MVD 88)
 4. J.M. Jones & Carter, Inc. (MVD 88)

5. J.M. Jones & Carter, Inc. (MVD 88)
 6. J.M. Jones & Carter, Inc. (MVD 88)

7. J.M. Jones & Carter, Inc. (MVD 88)
 8. J.M. Jones & Carter, Inc. (MVD 88)

1. E.M. Carter, Inc. (MVD 88)
 2. J.M. Jones & Carter, Inc. (MVD 88)

3. J.M. Jones & Carter, Inc. (MVD 88)
 4. J.M. Jones & Carter, Inc. (MVD 88)

5. J.M. Jones & Carter, Inc. (MVD 88)
 6. J.M. Jones & Carter, Inc. (MVD 88)

7. J.M. Jones & Carter, Inc. (MVD 88)
 8. J.M. Jones & Carter, Inc. (MVD 88)

1. E.M. Carter, Inc. (MVD 88)
 2. J.M. Jones & Carter, Inc. (MVD 88)

3. J.M. Jones & Carter, Inc. (MVD 88)
 4. J.M. Jones & Carter, Inc. (MVD 88)

5. J.M. Jones & Carter, Inc. (MVD 88)
 6. J.M. Jones & Carter, Inc. (MVD 88)

7. J.M. Jones & Carter, Inc. (MVD 88)
 8. J.M. Jones & Carter, Inc. (MVD 88)

1. E.M. Carter, Inc. (MVD 88)
 2. J.M. Jones & Carter, Inc. (MVD 88)

3. J.M. Jones & Carter, Inc. (MVD 88)
 4. J.M. Jones & Carter, Inc. (MVD 88)

5. J.M. Jones & Carter, Inc. (MVD 88)
 6. J.M. Jones & Carter, Inc. (MVD 88)

7. J.M. Jones & Carter, Inc. (MVD 88)
 8. J.M. Jones & Carter, Inc. (MVD 88)

1. E.M. Carter, Inc. (MVD 88)
 2. J.M. Jones & Carter, Inc. (MVD 88)

3. J.M. Jones & Carter, Inc. (MVD 88)
 4. J.M. Jones & Carter, Inc. (MVD 88)

5. J.M. Jones & Carter, Inc. (MVD 88)
 6. J.M. Jones & Carter, Inc. (MVD 88)

7. J.M. Jones & Carter, Inc. (MVD 88)
 8. J.M. Jones & Carter, Inc. (MVD 88)

1. E.M. Carter, Inc. (MVD 88)
 2. J.M. Jones & Carter, Inc. (MVD 88)

3. J.M. Jones & Carter, Inc. (MVD 88)
 4. J.M. Jones & Carter, Inc. (MVD 88)

5. J.M. Jones & Carter, Inc. (MVD 88)
 6. J.M. Jones & Carter, Inc. (MVD 88)

7. J.M. Jones & Carter, Inc. (MVD 88)
 8. J.M. Jones & Carter, Inc. (MVD 88)

1. E.M. Carter, Inc. (MVD 88)
 2. J.M. Jones & Carter, Inc. (MVD 88)

3. J.M. Jones & Carter, Inc. (MVD 88)
 4. J.M. Jones & Carter, Inc. (MVD 88)

5. J.M. Jones & Carter, Inc. (MVD 88)
 6. J.M. Jones & Carter, Inc. (MVD 88)

7. J.M. Jones & Carter, Inc. (MVD 88)
 8. J.M. Jones & Carter, Inc. (MVD 88)

1. E.M. Carter, Inc. (MVD 88)
 2. J.M. Jones & Carter, Inc. (MVD 88)

3. J.M. Jones & Carter, Inc. (MVD 88)
 4. J.M. Jones & Carter, Inc. (MVD 88)

5. J.M. Jones & Carter, Inc. (MVD 88)
 6. J.M. Jones & Carter, Inc. (MVD 88)

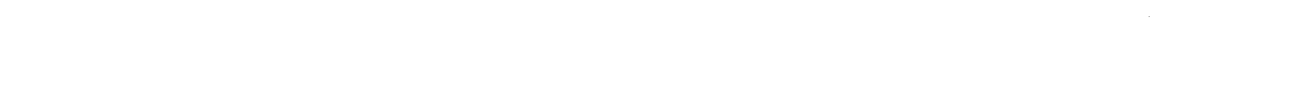
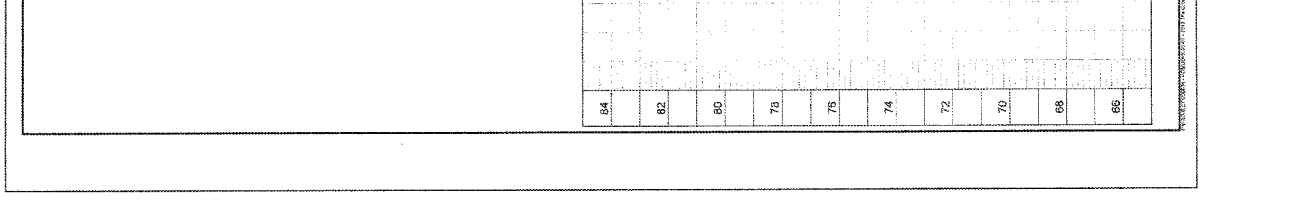
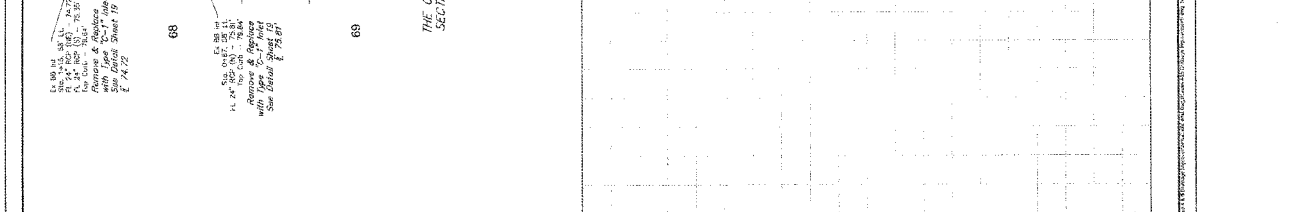
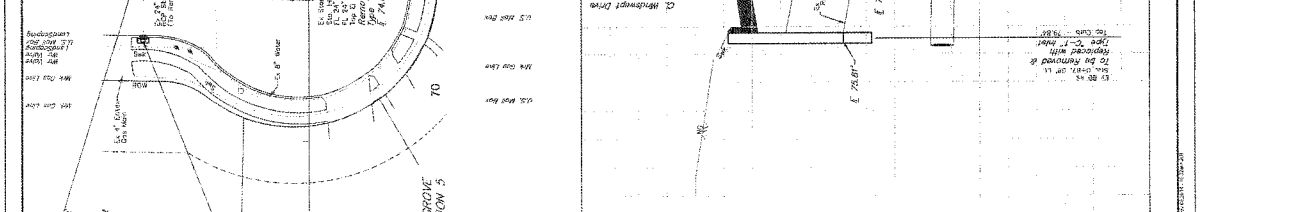
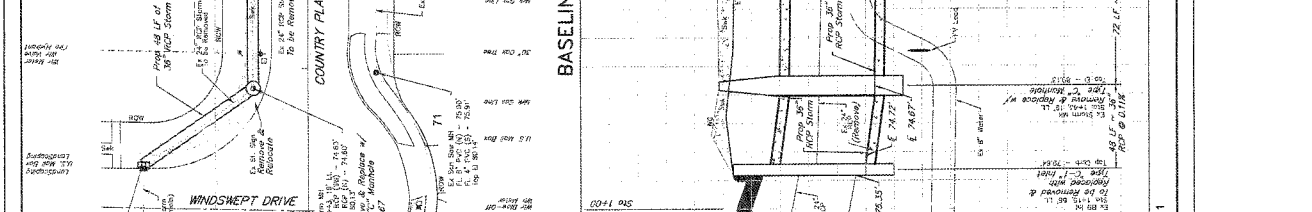
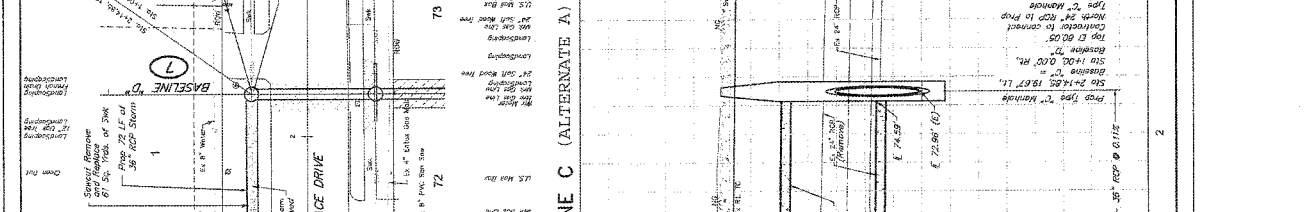
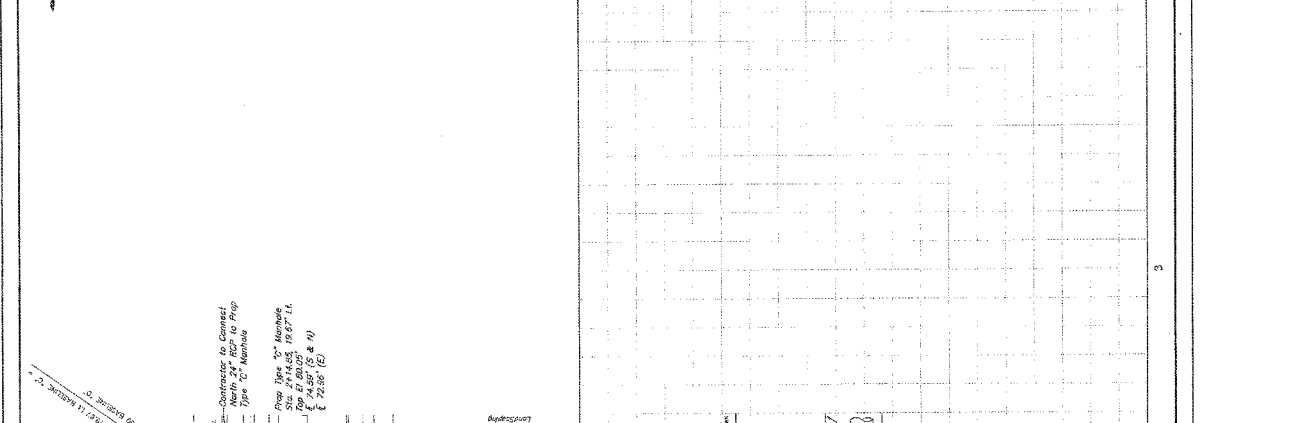
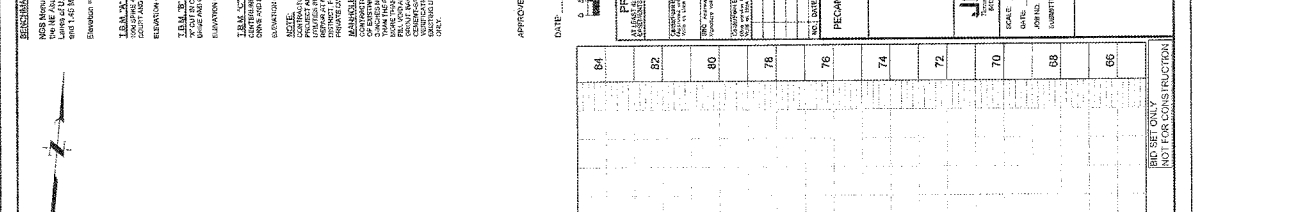
7. J.M. Jones & Carter, Inc. (MVD 88)
 8. J.M. Jones & Carter, Inc. (MVD 88)

1. E.M. Carter, Inc. (MVD 88)
 2. J.M. Jones & Carter, Inc. (MVD 88)

3. J.M. Jones & Carter, Inc. (MVD 88)
 4. J.M. Jones & Carter, Inc. (MVD 88)

5. J.M. Jones & Carter, Inc. (MVD 88)
 6. J.M. Jones & Carter, Inc. (MVD 88)

7. J.M. Jones & Carter, Inc. (MVD 88)
 8. J.M. Jones & Carter, Inc. (MVD 88)



BASELINE C (ALTERNATE A)

APPROVED: [Signature] DATE: 12/2/88

PECAN GROVE MUNICIPAL UTILITY DISTRICT
 FORT BEND COUNTY, TEXAS

THE GROVE, A & E
 DRAINAGE IMPROVEMENTS
 PLAN & PROFILE
 BASELINE C
 STA 1+00 - 2+50

J. JONES & CARTER, INC.
 ENGINEERS-PLANNERS-SURVEYORS
 1100 W. WILSON ST., SUITE 100
 FORT WORTH, TEXAS 76102

SCALE: 1" = 20' HORIZ. 1" = 2' VERT.
 DATE: NOVEMBER 2001
 DRAWN BY: J.M.J.
 CHECKED BY: J.M.J.
 SUBMITTED: NOVEMBER 2001
 SHEET NO. 6 OF 20



BID SET ONLY
 NOT FOR CONSTRUCTION

REVISIONS

NO. 1: (1) (2) (3) (4) (5) (6) (7) (8) (9) (10) (11) (12) (13) (14) (15) (16) (17) (18) (19) (20) (21) (22) (23) (24) (25) (26) (27) (28) (29) (30) (31) (32) (33) (34) (35) (36) (37) (38) (39) (40) (41) (42) (43) (44) (45) (46) (47) (48) (49) (50) (51) (52) (53) (54) (55) (56) (57) (58) (59) (60) (61) (62) (63) (64) (65) (66) (67) (68) (69) (70) (71) (72) (73) (74) (75) (76) (77) (78) (79) (80) (81) (82) (83) (84) (85) (86) (87) (88) (89) (90) (91) (92) (93) (94) (95) (96) (97) (98) (99) (100)

DATE: 12/2/14

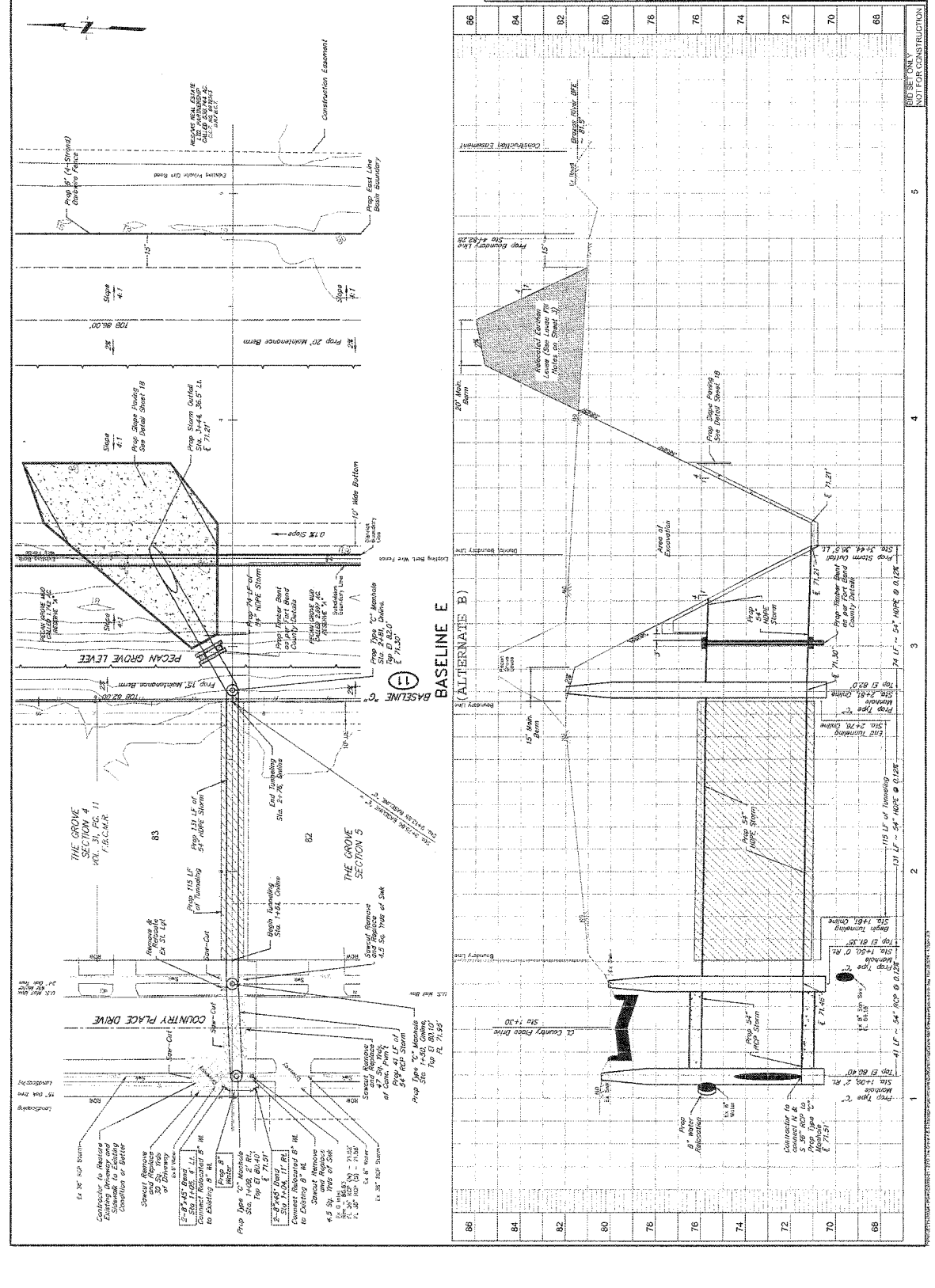
APPROVED: [Signature]

PROJECT: THE GROVE U.S. S DRAINAGE IMPROVEMENTS
PLAN & PROFILE
BASELINE E
STA 1+00 - 5+00

THE GROVE U.S. S DRAINAGE IMPROVEMENTS
PLAN & PROFILE
BASELINE E
STA 1+00 - 5+00

J.C. JONES & CARTER, INC.
 1000 S. W. 10th St., Suite 100, Ft. Worth, TX 76104
 Phone: (817) 335-1111 Fax: (817) 335-1112
 Website: www.jcjc.com

CLIENT: THE GROVE U.S. S DRAINAGE DISTRICT
DATE: 12/2/14
PROJECT NO.: 14-001-0001-0001
SCALE: 1" = 40'



| STATION | ELEVATION | REMARKS |
|---------|-----------|--------------|
| 86 | 82.00 | Prop. 18\"/> |
| 84 | 81.50 | Prop. 18\"/> |
| 82 | 81.00 | Prop. 18\"/> |
| 80 | 80.50 | Prop. 18\"/> |
| 78 | 80.00 | Prop. 18\"/> |
| 76 | 79.50 | Prop. 18\"/> |
| 74 | 79.00 | Prop. 18\"/> |
| 72 | 78.50 | Prop. 18\"/> |
| 70 | 78.00 | Prop. 18\"/> |
| 68 | 77.50 | Prop. 18\"/> |

NOTES: 1. Bases are in Top of FIM (End of Line) unless otherwise noted. 2. All elevations are in feet above mean sea level. 3. All dimensions are in feet unless otherwise noted. 4. All work shall be in accordance with the latest edition of the Texas State Specifications for Highway Construction. 5. All work shall be in accordance with the latest edition of the Texas State Specifications for Waterway Construction. 6. All work shall be in accordance with the latest edition of the Texas State Specifications for Electric Power and Communications Construction. 7. All work shall be in accordance with the latest edition of the Texas State Specifications for Miscellaneous Construction. 8. All work shall be in accordance with the latest edition of the Texas State Specifications for Landscaping and Horticulture. 9. All work shall be in accordance with the latest edition of the Texas State Specifications for Traffic Control. 10. All work shall be in accordance with the latest edition of the Texas State Specifications for Safety. 11. All work shall be in accordance with the latest edition of the Texas State Specifications for Environmental Protection. 12. All work shall be in accordance with the latest edition of the Texas State Specifications for Historical Preservation. 13. All work shall be in accordance with the latest edition of the Texas State Specifications for Cultural Resources. 14. All work shall be in accordance with the latest edition of the Texas State Specifications for Archaeology. 15. All work shall be in accordance with the latest edition of the Texas State Specifications for Paleontology. 16. All work shall be in accordance with the latest edition of the Texas State Specifications for Anthropology. 17. All work shall be in accordance with the latest edition of the Texas State Specifications for Linguistics. 18. All work shall be in accordance with the latest edition of the Texas State Specifications for Anthropology. 19. All work shall be in accordance with the latest edition of the Texas State Specifications for Archaeology. 20. All work shall be in accordance with the latest edition of the Texas State Specifications for Paleontology.

THE GROVE SECTION 4
 102, 101, 100, 99, 98, 97, 96, 95, 94, 93, 92, 91, 90, 89, 88, 87, 86, 85, 84, 83, 82, 81, 80, 79, 78, 77, 76, 75, 74, 73, 72, 71, 70, 69, 68, 67, 66, 65, 64, 63, 62, 61, 60, 59, 58, 57, 56, 55, 54, 53, 52, 51, 50, 49, 48, 47, 46, 45, 44, 43, 42, 41, 40, 39, 38, 37, 36, 35, 34, 33, 32, 31, 30, 29, 28, 27, 26, 25, 24, 23, 22, 21, 20, 19, 18, 17, 16, 15, 14, 13, 12, 11, 10, 9, 8, 7, 6, 5, 4, 3, 2, 1, 0

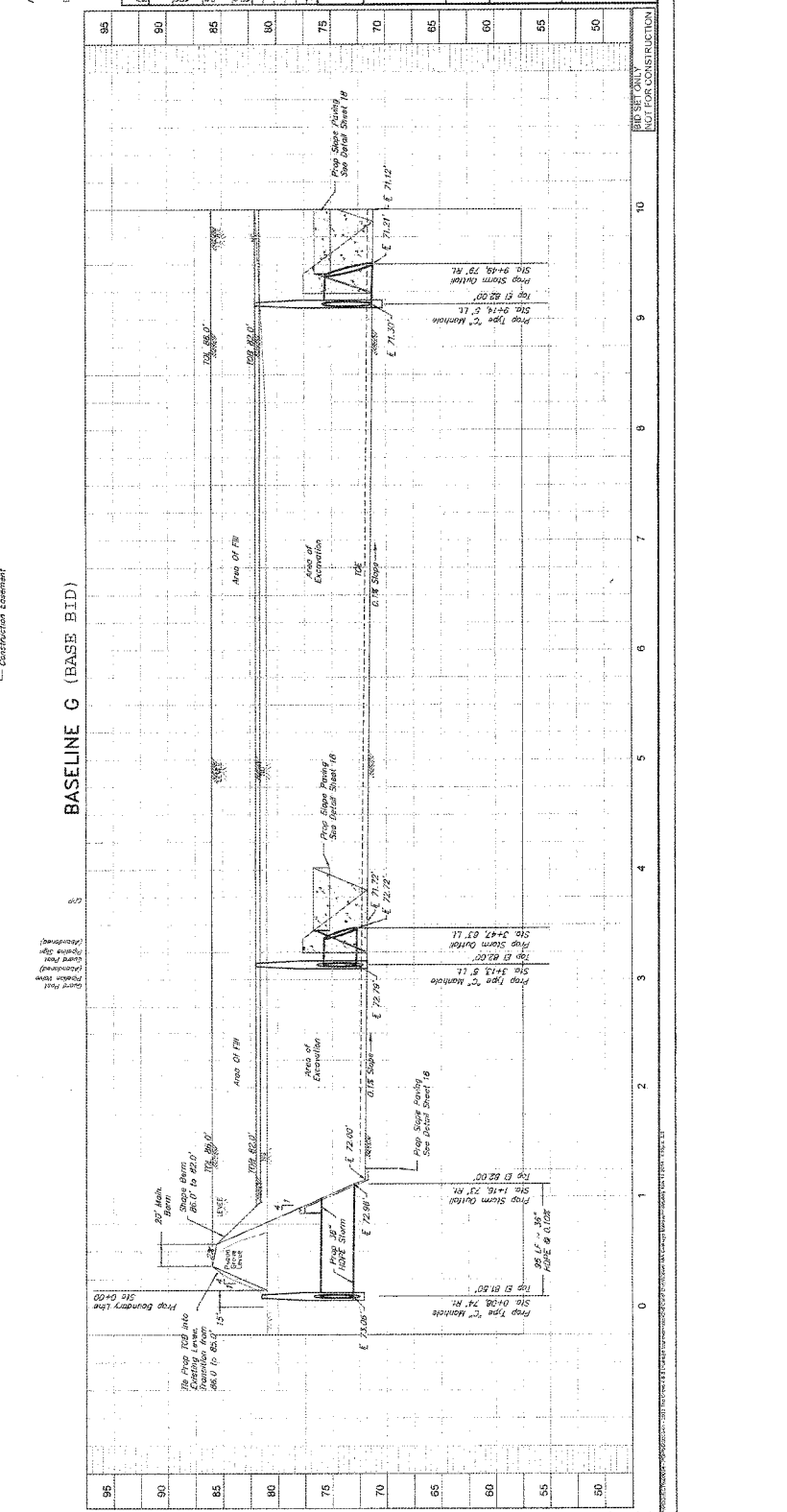
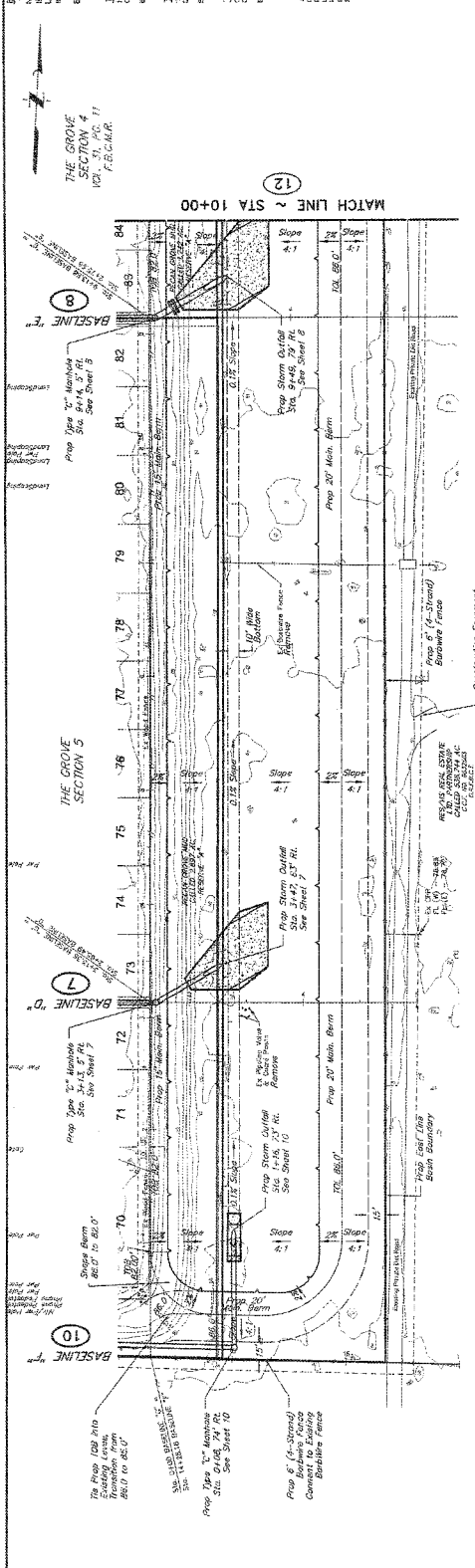
APPROVED: [Signature]
 DATE: 11/21/11
 PROJECT: [Project Name]
 DRAWING NO.: [Drawing No.]
 SHEET NO.: [Sheet No.]

THE GROVE SECTION 5
 102, 101, 100, 99, 98, 97, 96, 95, 94, 93, 92, 91, 90, 89, 88, 87, 86, 85, 84, 83, 82, 81, 80, 79, 78, 77, 76, 75, 74, 73, 72, 71, 70, 69, 68, 67, 66, 65, 64, 63, 62, 61, 60, 59, 58, 57, 56, 55, 54, 53, 52, 51, 50, 49, 48, 47, 46, 45, 44, 43, 42, 41, 40, 39, 38, 37, 36, 35, 34, 33, 32, 31, 30, 29, 28, 27, 26, 25, 24, 23, 22, 21, 20, 19, 18, 17, 16, 15, 14, 13, 12, 11, 10, 9, 8, 7, 6, 5, 4, 3, 2, 1, 0

THE GROVE SECTION 6
 102, 101, 100, 99, 98, 97, 96, 95, 94, 93, 92, 91, 90, 89, 88, 87, 86, 85, 84, 83, 82, 81, 80, 79, 78, 77, 76, 75, 74, 73, 72, 71, 70, 69, 68, 67, 66, 65, 64, 63, 62, 61, 60, 59, 58, 57, 56, 55, 54, 53, 52, 51, 50, 49, 48, 47, 46, 45, 44, 43, 42, 41, 40, 39, 38, 37, 36, 35, 34, 33, 32, 31, 30, 29, 28, 27, 26, 25, 24, 23, 22, 21, 20, 19, 18, 17, 16, 15, 14, 13, 12, 11, 10, 9, 8, 7, 6, 5, 4, 3, 2, 1, 0

THE GROVE SECTION 7
 102, 101, 100, 99, 98, 97, 96, 95, 94, 93, 92, 91, 90, 89, 88, 87, 86, 85, 84, 83, 82, 81, 80, 79, 78, 77, 76, 75, 74, 73, 72, 71, 70, 69, 68, 67, 66, 65, 64, 63, 62, 61, 60, 59, 58, 57, 56, 55, 54, 53, 52, 51, 50, 49, 48, 47, 46, 45, 44, 43, 42, 41, 40, 39, 38, 37, 36, 35, 34, 33, 32, 31, 30, 29, 28, 27, 26, 25, 24, 23, 22, 21, 20, 19, 18, 17, 16, 15, 14, 13, 12, 11, 10, 9, 8, 7, 6, 5, 4, 3, 2, 1, 0

THE GROVE SECTION 8
 102, 101, 100, 99, 98, 97, 96, 95, 94, 93, 92, 91, 90, 89, 88, 87, 86, 85, 84, 83, 82, 81, 80, 79, 78, 77, 76, 75, 74, 73, 72, 71, 70, 69, 68, 67, 66, 65, 64, 63, 62, 61, 60, 59, 58, 57, 56, 55, 54, 53, 52, 51, 50, 49, 48, 47, 46, 45, 44, 43, 42, 41, 40, 39, 38, 37, 36, 35, 34, 33, 32, 31, 30, 29, 28, 27, 26, 25, 24, 23, 22, 21, 20, 19, 18, 17, 16, 15, 14, 13, 12, 11, 10, 9, 8, 7, 6, 5, 4, 3, 2, 1, 0



THE GROVE SECTION 9
 102, 101, 100, 99, 98, 97, 96, 95, 94, 93, 92, 91, 90, 89, 88, 87, 86, 85, 84, 83, 82, 81, 80, 79, 78, 77, 76, 75, 74, 73, 72, 71, 70, 69, 68, 67, 66, 65, 64, 63, 62, 61, 60, 59, 58, 57, 56, 55, 54, 53, 52, 51, 50, 49, 48, 47, 46, 45, 44, 43, 42, 41, 40, 39, 38, 37, 36, 35, 34, 33, 32, 31, 30, 29, 28, 27, 26, 25, 24, 23, 22, 21, 20, 19, 18, 17, 16, 15, 14, 13, 12, 11, 10, 9, 8, 7, 6, 5, 4, 3, 2, 1, 0



THE GROVE SECTION 10
 102, 101, 100, 99, 98, 97, 96, 95, 94, 93, 92, 91, 90, 89, 88, 87, 86, 85, 84, 83, 82, 81, 80, 79, 78, 77, 76, 75, 74, 73, 72, 71, 70, 69, 68, 67, 66, 65, 64, 63, 62, 61, 60, 59, 58, 57, 56, 55, 54, 53, 52, 51, 50, 49, 48, 47, 46, 45, 44, 43, 42, 41, 40, 39, 38, 37, 36, 35, 34, 33, 32, 31, 30, 29, 28, 27, 26, 25, 24, 23, 22, 21, 20, 19, 18, 17, 16, 15, 14, 13, 12, 11, 10, 9, 8, 7, 6, 5, 4, 3, 2, 1, 0

REVISIONS

NO. 1: Revised to show the proposed improvements in accordance with the approved plan and profile. (10/14/14)

NO. 2: Revised to show the proposed improvements in accordance with the approved plan and profile. (10/14/14)

TEAM

OWNER: THE CITY OF FORT BEND COUNTY, TEXAS
 PROJECT: IMPROVEMENTS TO THE MAINLINE OF THE FORT BEND COUNTY ROADWAY SYSTEM
 LOCATION: STA 10+00 TO STA 20+00

DESIGNER: J.C. JONES & ASSOCIATES, P.C.
 PROJECT MANAGER: JAMES JONES
 DATE: 10/14/14

NOTE:

1. THE PROPOSED IMPROVEMENTS SHOWN ON THIS PLAN AND PROFILE ARE SUBJECT TO THE APPROVAL OF THE FORT BEND COUNTY BOARD OF COUNTY COMMISSIONERS.

2. THE PROPOSED IMPROVEMENTS SHOWN ON THIS PLAN AND PROFILE ARE SUBJECT TO THE APPROVAL OF THE FORT BEND COUNTY BOARD OF COUNTY COMMISSIONERS.

APPROVED: _____
 DATE: 10/14/14

PRIVATE UTILITY LINES SHOWN

SCALE: 1" = 30'

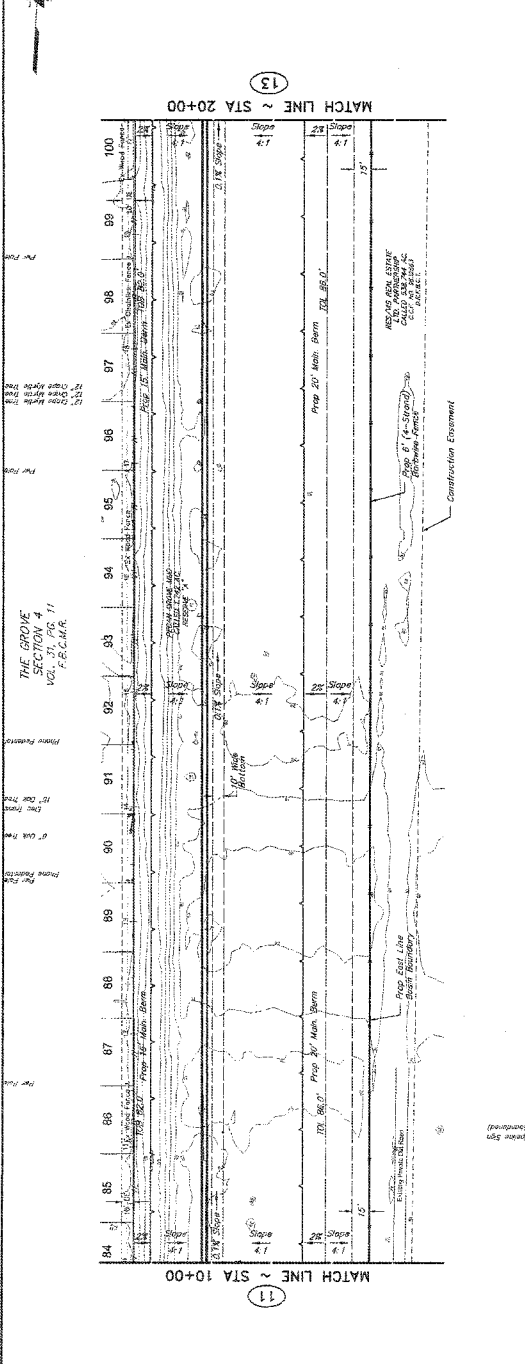
Legend: _____

PECAN GROVE MUNICIPAL UTILITY DISTRICT

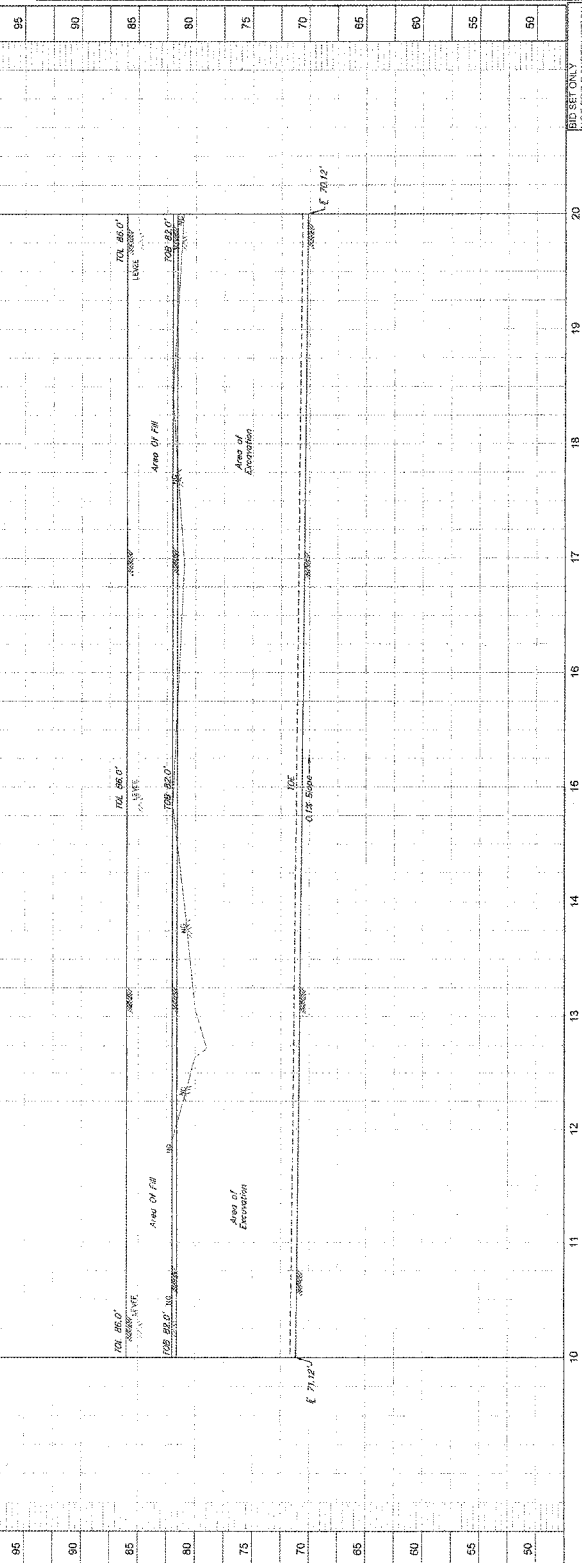
THE GROVE # 3 & 5
 IMPROVEMENTS
 PLAN & PROFILE
 BASELINE G
 STA 10+00 - 20+00

J.C. JONES & ASSOCIATES, P.C.
 ENGINEERS & ARCHITECTS
 1100 WEST 19TH STREET, SUITE 100
 FORT WORTH, TEXAS 76102
 PHONE: (817) 339-1111
 FAX: (817) 339-1112
 WWW: www.jc-jones.com

DATE: 10/14/14
 DRAWN BY: JJJ
 CHECKED BY: JJJ
 PROJECT: _____
 SHEET: _____



BASELINE G (BASE BID)



11 MATCH LINE ~ STA 10+00

13 MATCH LINE ~ STA 20+00

95

90

85

80

75

70

65

60

55

50

10

11

12

13

14

15

16

17

18

19

20

BID SET ONLY
NOT FOR CONSTRUCTION

REVISIONS

1. **DATE:** 12/2/19
BY: [Signature]
REASON: [Signature]

NOTE: THE CONTRACTOR SHALL BE RESPONSIBLE FOR OBTAINING ALL NECESSARY PERMITS FROM THE APPROPRIATE AGENCIES. THE CONTRACTOR SHALL BE RESPONSIBLE FOR OBTAINING ALL NECESSARY PERMITS FROM THE APPROPRIATE AGENCIES. THE CONTRACTOR SHALL BE RESPONSIBLE FOR OBTAINING ALL NECESSARY PERMITS FROM THE APPROPRIATE AGENCIES.

APPROVED: [Signature]
DATE: 12/2/19

SCALE: 1" = 20'

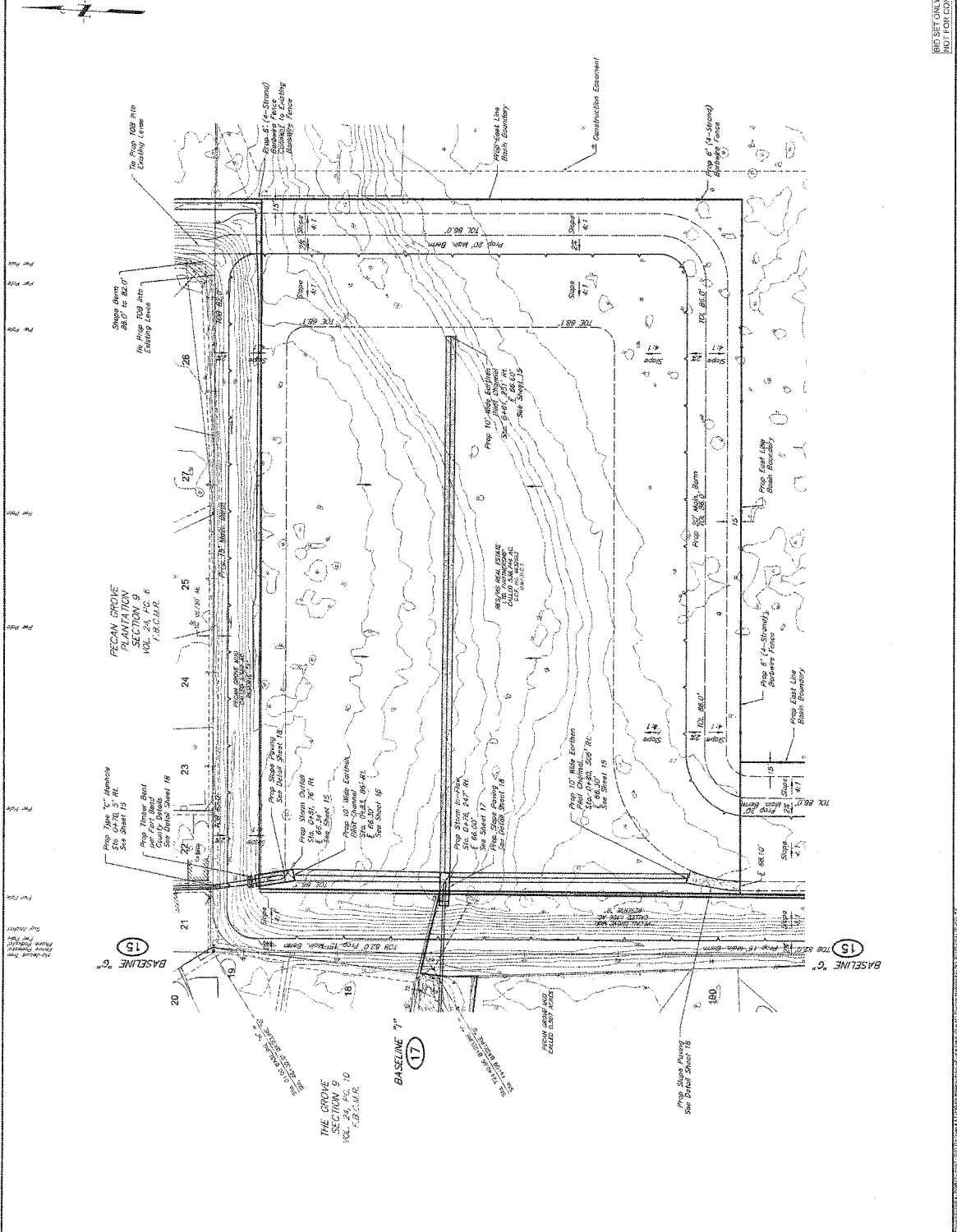
PRIVATE UTILITY LINES SHOWN
 BASED ON RECORD DRAWINGS AND FIELD SURVEY.

| NO. | DATE | DESCRIPTION |
|-----|---------|--------------------|
| 1 | 12/2/19 | ISSUED FOR PERMITS |

PEACAN GROVE MUNICIPAL UTILITY DISTRICT
 DRAINAGE IMPROVEMENTS

PLAN
BASELINE H
STA 0+00 - 8+50

J.C. JAMES & SONS, INC.
 ENGINEERS & ARCHITECTS
 1414 N. GARDNER STREET, SUITE 100
 DALLAS, TEXAS 75207
 PHONE: (214) 761-1111
 FAX: (214) 761-1112



NOT FOR CONSTRUCTION

REVISIONS

| | | |
|-------|----------|----------------------|
| NO. 1 | DATE | DESCRIPTION |
| 1 | 10/23/17 | ISSUED FOR PERMITS |
| 2 | 11/03/17 | REVISED PER COMMENTS |
| 3 | 11/03/17 | REVISED PER COMMENTS |
| 4 | 11/03/17 | REVISED PER COMMENTS |
| 5 | 11/03/17 | REVISED PER COMMENTS |

GENERAL NOTES

- SEE SHEET 15 FOR THE PROPOSED IMPROVEMENTS TO THE EXISTING 15" DIAMETER 15' DEPTH MANHOLE AT STA 62+00.00.
- SEE SHEET 16 FOR THE PROPOSED IMPROVEMENTS TO THE EXISTING 15" DIAMETER 15' DEPTH MANHOLE AT STA 62+50.00.
- SEE SHEET 17 FOR THE PROPOSED IMPROVEMENTS TO THE EXISTING 15" DIAMETER 15' DEPTH MANHOLE AT STA 63+00.00.
- SEE SHEET 18 FOR THE PROPOSED IMPROVEMENTS TO THE EXISTING 15" DIAMETER 15' DEPTH MANHOLE AT STA 63+50.00.
- SEE SHEET 19 FOR THE PROPOSED IMPROVEMENTS TO THE EXISTING 15" DIAMETER 15' DEPTH MANHOLE AT STA 64+00.00.
- SEE SHEET 20 FOR THE PROPOSED IMPROVEMENTS TO THE EXISTING 15" DIAMETER 15' DEPTH MANHOLE AT STA 64+50.00.
- SEE SHEET 21 FOR THE PROPOSED IMPROVEMENTS TO THE EXISTING 15" DIAMETER 15' DEPTH MANHOLE AT STA 65+00.00.
- SEE SHEET 22 FOR THE PROPOSED IMPROVEMENTS TO THE EXISTING 15" DIAMETER 15' DEPTH MANHOLE AT STA 65+50.00.
- SEE SHEET 23 FOR THE PROPOSED IMPROVEMENTS TO THE EXISTING 15" DIAMETER 15' DEPTH MANHOLE AT STA 66+00.00.
- SEE SHEET 24 FOR THE PROPOSED IMPROVEMENTS TO THE EXISTING 15" DIAMETER 15' DEPTH MANHOLE AT STA 66+50.00.
- SEE SHEET 25 FOR THE PROPOSED IMPROVEMENTS TO THE EXISTING 15" DIAMETER 15' DEPTH MANHOLE AT STA 67+00.00.
- SEE SHEET 26 FOR THE PROPOSED IMPROVEMENTS TO THE EXISTING 15" DIAMETER 15' DEPTH MANHOLE AT STA 67+50.00.
- SEE SHEET 27 FOR THE PROPOSED IMPROVEMENTS TO THE EXISTING 15" DIAMETER 15' DEPTH MANHOLE AT STA 68+00.00.
- SEE SHEET 28 FOR THE PROPOSED IMPROVEMENTS TO THE EXISTING 15" DIAMETER 15' DEPTH MANHOLE AT STA 68+50.00.
- SEE SHEET 29 FOR THE PROPOSED IMPROVEMENTS TO THE EXISTING 15" DIAMETER 15' DEPTH MANHOLE AT STA 69+00.00.
- SEE SHEET 30 FOR THE PROPOSED IMPROVEMENTS TO THE EXISTING 15" DIAMETER 15' DEPTH MANHOLE AT STA 69+50.00.
- SEE SHEET 31 FOR THE PROPOSED IMPROVEMENTS TO THE EXISTING 15" DIAMETER 15' DEPTH MANHOLE AT STA 70+00.00.
- SEE SHEET 32 FOR THE PROPOSED IMPROVEMENTS TO THE EXISTING 15" DIAMETER 15' DEPTH MANHOLE AT STA 70+50.00.
- SEE SHEET 33 FOR THE PROPOSED IMPROVEMENTS TO THE EXISTING 15" DIAMETER 15' DEPTH MANHOLE AT STA 71+00.00.
- SEE SHEET 34 FOR THE PROPOSED IMPROVEMENTS TO THE EXISTING 15" DIAMETER 15' DEPTH MANHOLE AT STA 71+50.00.
- SEE SHEET 35 FOR THE PROPOSED IMPROVEMENTS TO THE EXISTING 15" DIAMETER 15' DEPTH MANHOLE AT STA 72+00.00.
- SEE SHEET 36 FOR THE PROPOSED IMPROVEMENTS TO THE EXISTING 15" DIAMETER 15' DEPTH MANHOLE AT STA 72+50.00.
- SEE SHEET 37 FOR THE PROPOSED IMPROVEMENTS TO THE EXISTING 15" DIAMETER 15' DEPTH MANHOLE AT STA 73+00.00.
- SEE SHEET 38 FOR THE PROPOSED IMPROVEMENTS TO THE EXISTING 15" DIAMETER 15' DEPTH MANHOLE AT STA 73+50.00.
- SEE SHEET 39 FOR THE PROPOSED IMPROVEMENTS TO THE EXISTING 15" DIAMETER 15' DEPTH MANHOLE AT STA 74+00.00.
- SEE SHEET 40 FOR THE PROPOSED IMPROVEMENTS TO THE EXISTING 15" DIAMETER 15' DEPTH MANHOLE AT STA 74+50.00.

APPROVED: _____
DATE: 10/10/14

SCALE: 1" = 50'

PRIVATE UTILITY LINES SHOWN
 ARE BASED ON RECORD DRAWINGS AND FIELD SURVEY.
 CONTRACTOR SHALL VERIFY LOCATION AND DEPTH OF ALL UTILITIES PRIOR TO CONSTRUCTION.

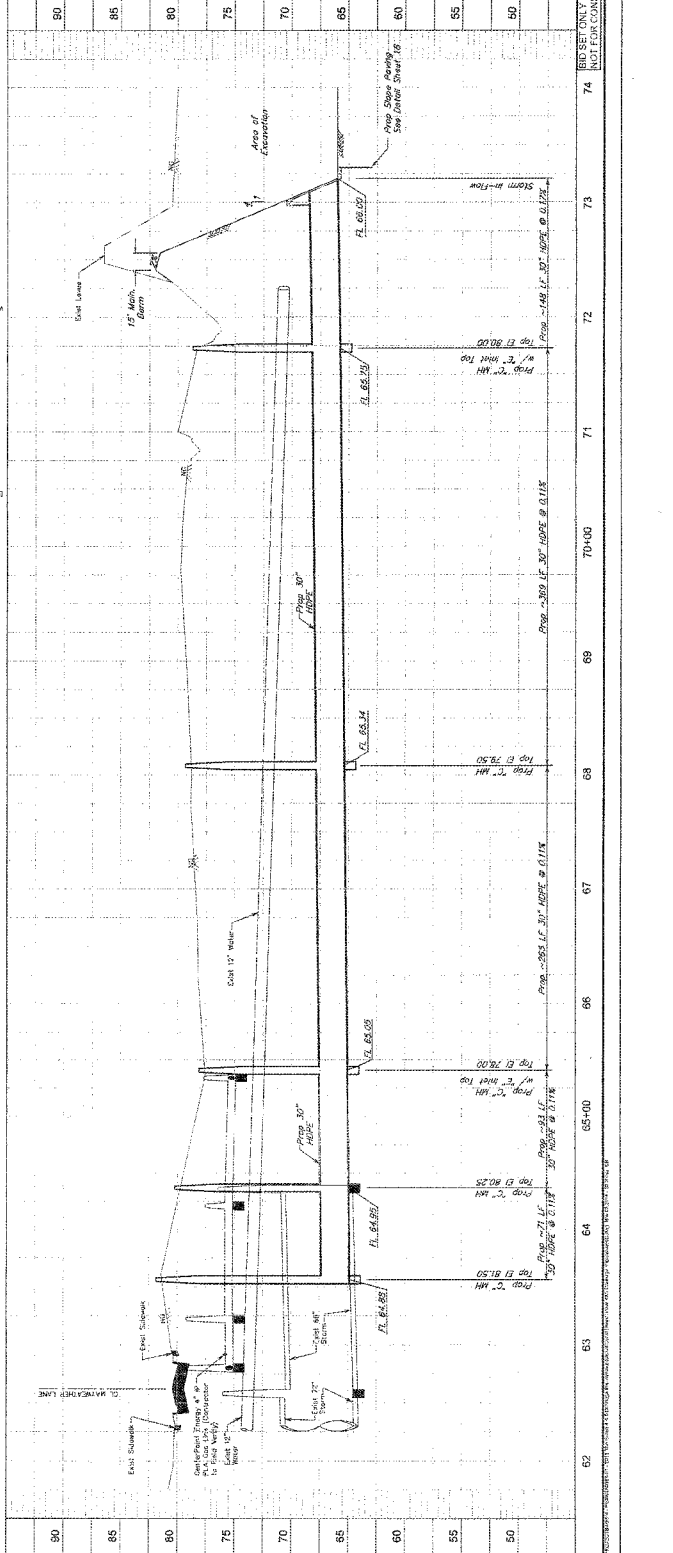
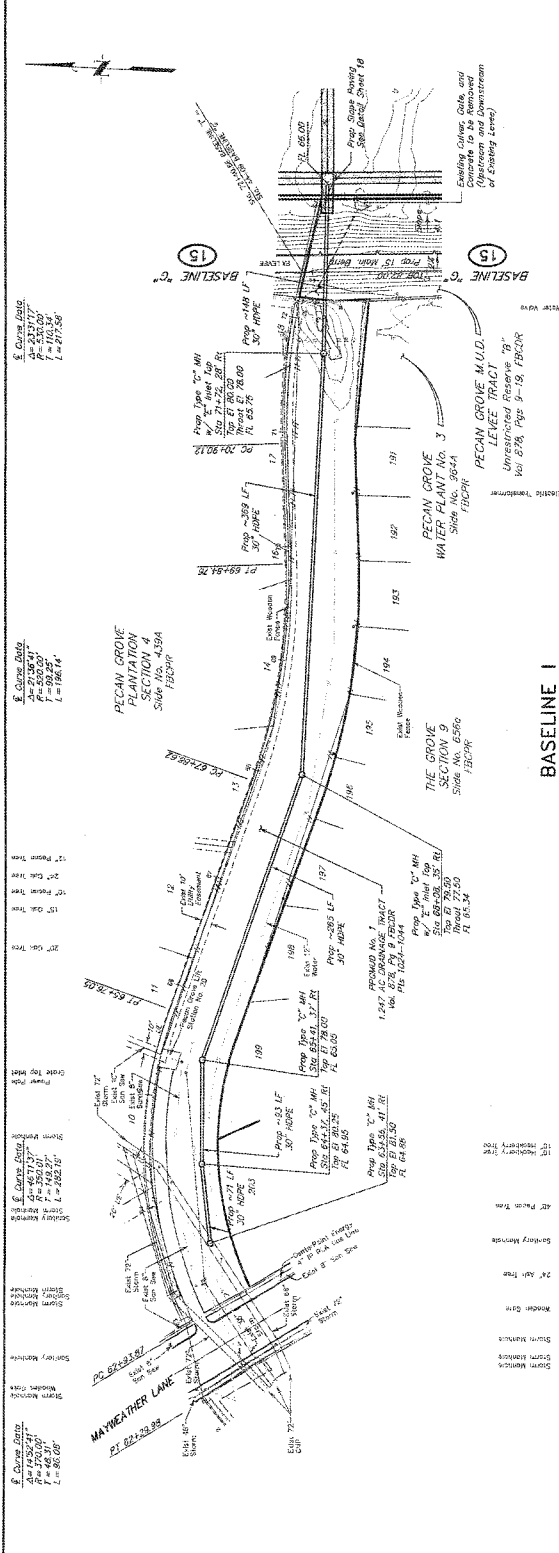
PECAN GROVE MUNICIPAL UTILITY DISTRICT
 FORT BEND COUNTY, TEXAS

THE GROVE # 3 & 5
DRAINAGE IMPROVEMENTS
PLAN & PROFILE
BASELINE I
STA 62+00 -- 74+00

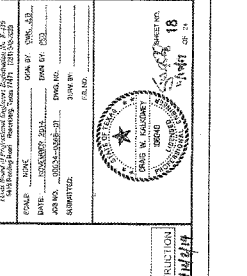
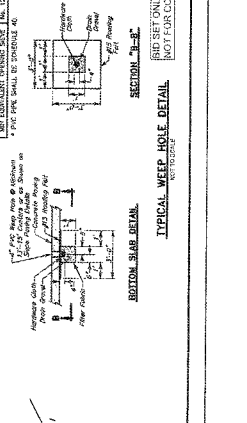
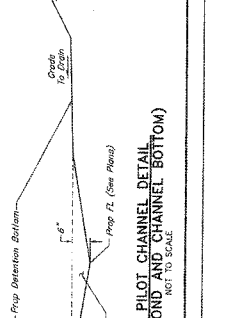
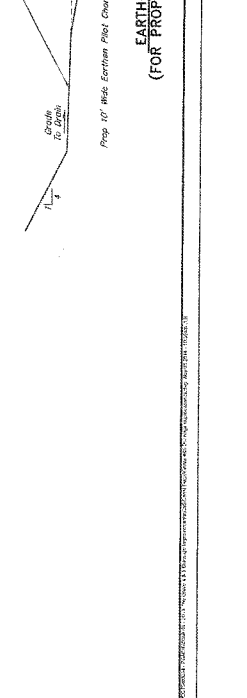
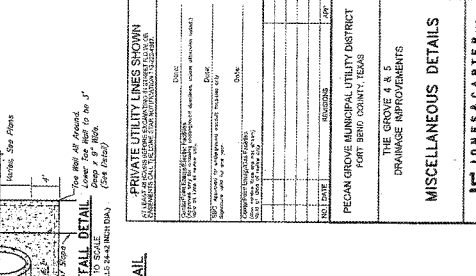
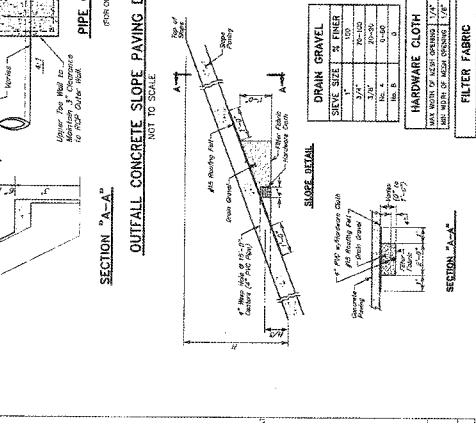
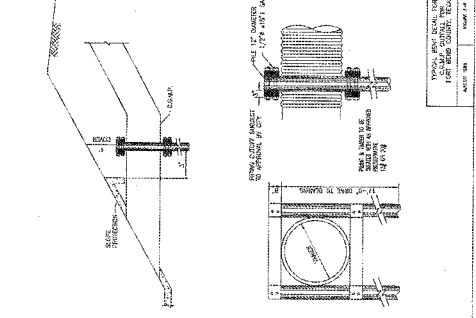
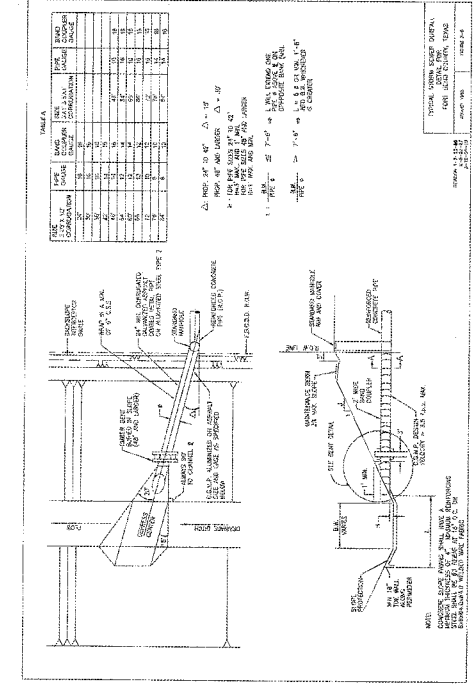
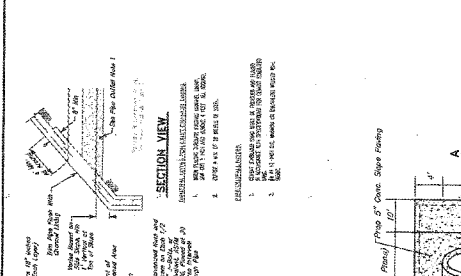
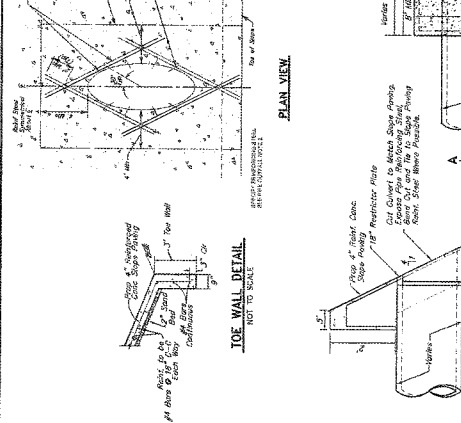
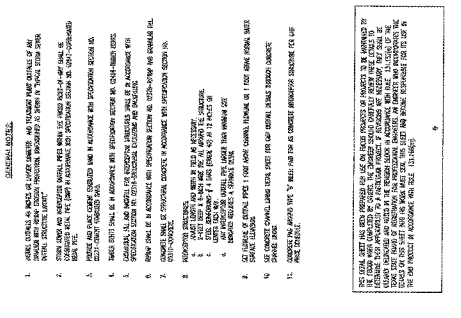
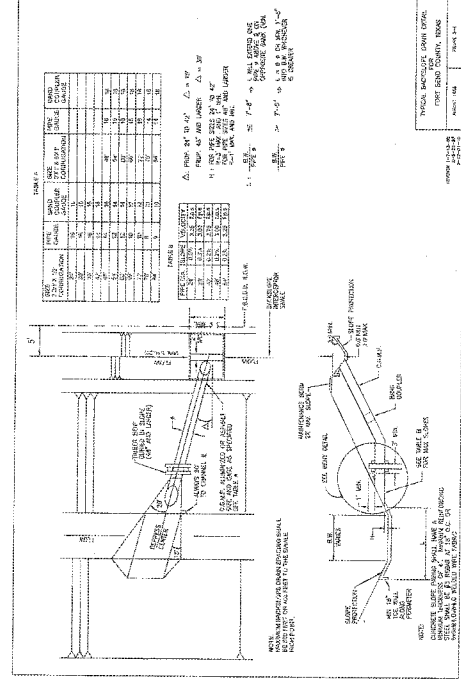
JONES & KATZ
 ENGINEERS
 1400 WEST 19TH STREET, SUITE 100
 FORT WORTH, TEXAS 76108
 PHONE: 817.339.2200
 FAX: 817.339.2201
 WWW: JONESANDKATZ.COM

DATE: 10/23/17
PROJECT NO.: 2017-001
SCALE: 1" = 50'
DATE: 10/23/17
PROJECT NO.: 2017-001
SCALE: 1" = 50'

NO. 1 DATE DESCRIPTION



80 SET ONLY
NOT FOR CONSTRUCTION



GENERAL NOTES:

1. GENERAL NOTES ON THIS DRAWING ARE TO BE READ IN CONNECTION WITH THE SPECIFICATIONS AND THE DETAILS OF THE WORK TO BE PERFORMED.
2. THE CONTRACTOR SHALL BE RESPONSIBLE FOR OBTAINING ALL NECESSARY PERMITS AND APPROVALS FROM THE APPROPRIATE AGENCIES.
3. THE CONTRACTOR SHALL BE RESPONSIBLE FOR OBTAINING ALL NECESSARY MATERIALS AND SUPPLIES.
4. THE CONTRACTOR SHALL BE RESPONSIBLE FOR OBTAINING ALL NECESSARY LABORERS AND WORKERS.
5. THE CONTRACTOR SHALL BE RESPONSIBLE FOR OBTAINING ALL NECESSARY EQUIPMENT AND TOOLS.
6. THE CONTRACTOR SHALL BE RESPONSIBLE FOR OBTAINING ALL NECESSARY TRANSPORTATION AND LOGGING.
7. THE CONTRACTOR SHALL BE RESPONSIBLE FOR OBTAINING ALL NECESSARY INSURANCE AND BONDING.
8. THE CONTRACTOR SHALL BE RESPONSIBLE FOR OBTAINING ALL NECESSARY PERMITS AND APPROVALS FROM THE APPROPRIATE AGENCIES.
9. THE CONTRACTOR SHALL BE RESPONSIBLE FOR OBTAINING ALL NECESSARY MATERIALS AND SUPPLIES.
10. THE CONTRACTOR SHALL BE RESPONSIBLE FOR OBTAINING ALL NECESSARY LABORERS AND WORKERS.
11. THE CONTRACTOR SHALL BE RESPONSIBLE FOR OBTAINING ALL NECESSARY EQUIPMENT AND TOOLS.
12. THE CONTRACTOR SHALL BE RESPONSIBLE FOR OBTAINING ALL NECESSARY TRANSPORTATION AND LOGGING.
13. THE CONTRACTOR SHALL BE RESPONSIBLE FOR OBTAINING ALL NECESSARY INSURANCE AND BONDING.

PRIVATE UTILITY LINES SHOWN
 (AS SHOWN ON THIS DRAWING ARE NOT TO BE CONSIDERED AS GUARANTEED)

DATE: _____
 DRAWN BY: _____
 CHECKED BY: _____
 APPROVED BY: _____

THE GROVE, A. S.
 DRAINAGE IMPROVEMENTS

J.C. JONES & CARTER, INC.
 ENGINEERS AND ARCHITECTS
 1000 WEST 10TH STREET, SUITE 100
 FORT WORTH, TEXAS 76102

PROJECT NO. _____
 SHEET NO. 18 OF 18

PECAN GROVE MUNICIPAL UTILITY DISTRICT
 FORT WORTH COUNTY, TEXAS

DRAINAGE IMPROVEMENTS

MISCELLANEOUS DETAILS

J.C. JONES & CARTER, INC.
 ENGINEERS AND ARCHITECTS
 1000 WEST 10TH STREET, SUITE 100
 FORT WORTH, TEXAS 76102

DATE: _____
 DRAWN BY: _____
 CHECKED BY: _____
 APPROVED BY: _____

PROJECT NO. _____
 SHEET NO. 18 OF 18

| NO. | DESCRIPTION | DATE | BY | CHKD. |
|-----|--------------|------|----|-------|
| 1 | DESIGN | | | |
| 2 | CONSTRUCTION | | | |
| 3 | AS BUILT | | | |

FOR INFORMATION OF THE ENGINEER, THE CONTRACTOR SHALL BE RESPONSIBLE FOR OBTAINING ALL NECESSARY PERMITS FROM THE CITY OF HOUSTON, TEXAS, AND THE STATE OF TEXAS, PRIOR TO THE COMMENCEMENT OF CONSTRUCTION. THE CONTRACTOR SHALL BE RESPONSIBLE FOR OBTAINING ALL NECESSARY PERMITS FROM THE CITY OF HOUSTON, TEXAS, AND THE STATE OF TEXAS, PRIOR TO THE COMMENCEMENT OF CONSTRUCTION.

FOR INFORMATION OF THE ENGINEER, THE CONTRACTOR SHALL BE RESPONSIBLE FOR OBTAINING ALL NECESSARY PERMITS FROM THE CITY OF HOUSTON, TEXAS, AND THE STATE OF TEXAS, PRIOR TO THE COMMENCEMENT OF CONSTRUCTION. THE CONTRACTOR SHALL BE RESPONSIBLE FOR OBTAINING ALL NECESSARY PERMITS FROM THE CITY OF HOUSTON, TEXAS, AND THE STATE OF TEXAS, PRIOR TO THE COMMENCEMENT OF CONSTRUCTION.

NOT FOR CONSTRUCTION

J.C. JONES & CARTER, INC.
Professional Engineer
12345 Main Street, Houston, Texas 77001
Phone: (713) 123-4567

CITY OF HOUSTON
STANDARD CONSTRUCTION DETAILS
STORM SEWER

SCALE: AS SHOWN
DESIGNED BY: J.C.J.
DRAWN BY: J.C.J.
CHECKED BY: J.C.J.
DATE: OCTOBER 24, 1950
JOB NO.: 12345
SHEET NO.: 19

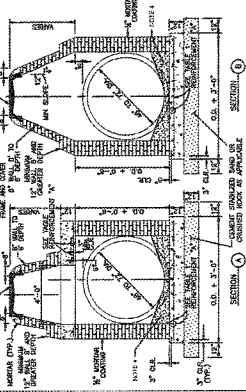
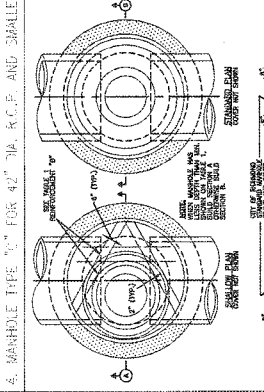
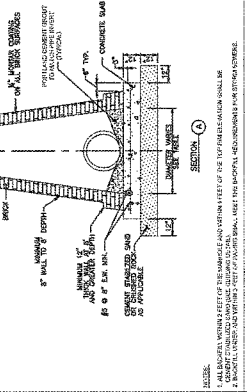
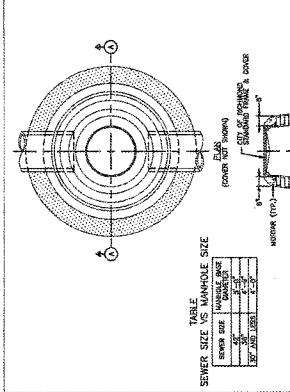
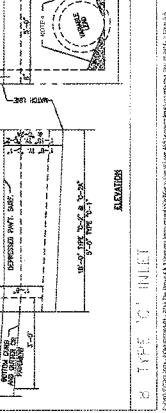
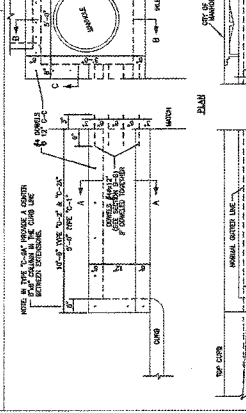
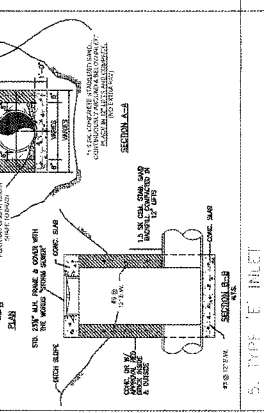
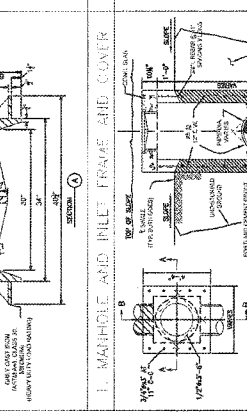
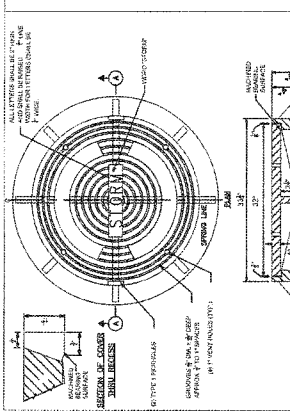
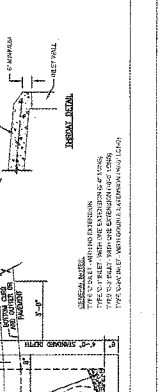
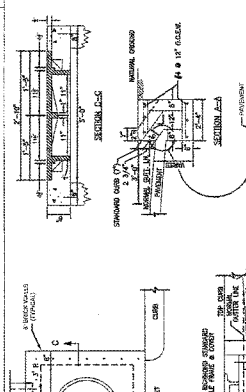
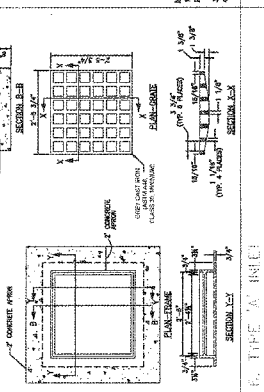
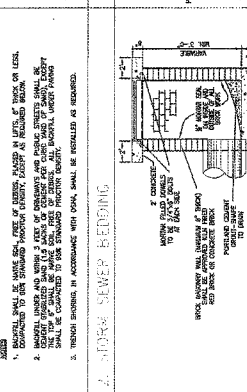
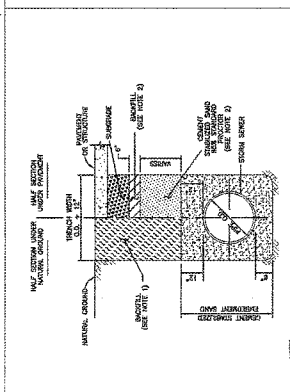
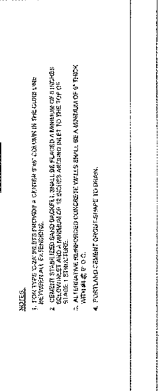
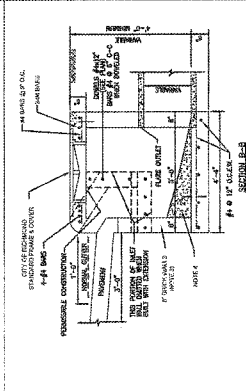
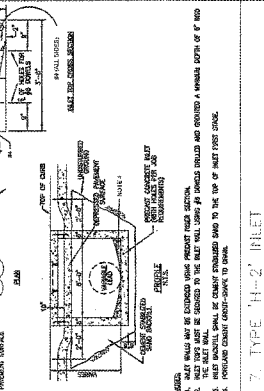
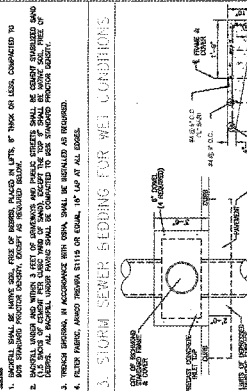
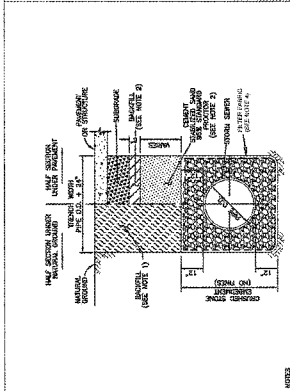


TABLE 1: MANHOLE TYPE 'A' FOR 42\"/>

| MANHOLE SIZE | MANHOLE DEPTH | MANHOLE WALL THICKNESS | MANHOLE COVER THICKNESS |
|--------------|---------------|------------------------|-------------------------|
| 42\"/> | | | |



| | |
|---------|---------------------------|
| NO. 100 | CITY OF RICHMOND |
| NO. 101 | REVENUE |
| NO. 102 | SALES TAX |
| NO. 103 | PROPERTY TAX |
| NO. 104 | UNEMPLOYMENT COMPENSATION |
| NO. 105 | STATE TAX |
| NO. 106 | FEDERAL TAX |
| NO. 107 | OTHER TAXES |
| NO. 108 | FEES |
| NO. 109 | CHARGES |
| NO. 110 | DISCOUNTS |
| NO. 111 | ADJUSTMENTS |
| NO. 112 | TOTAL |

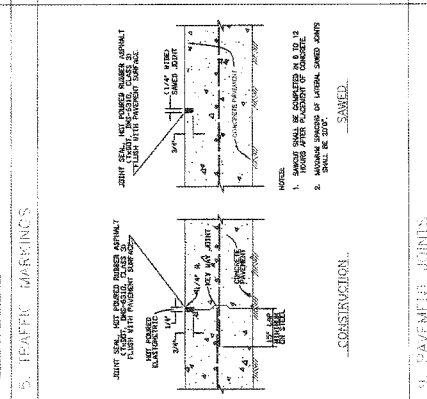
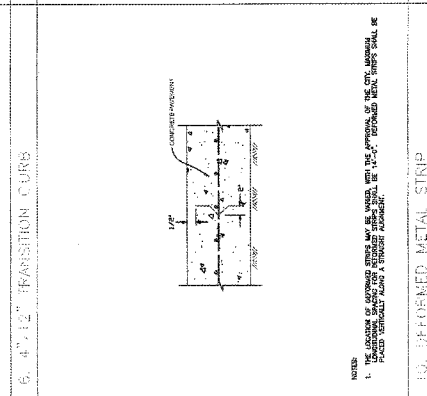
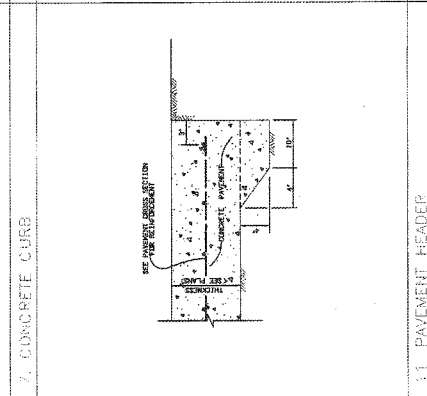
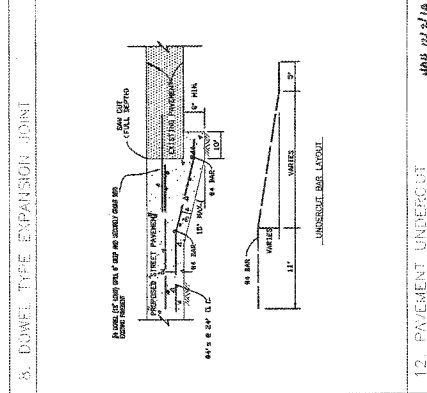
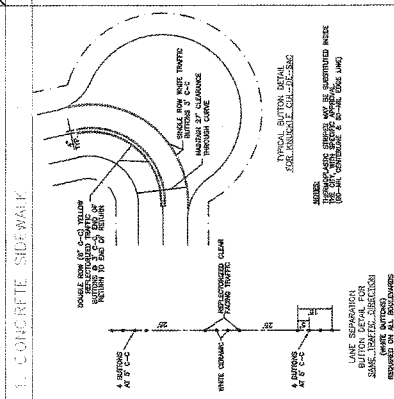
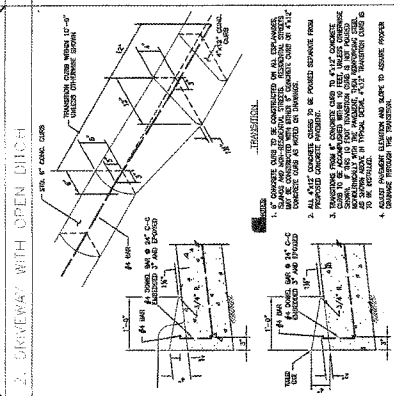
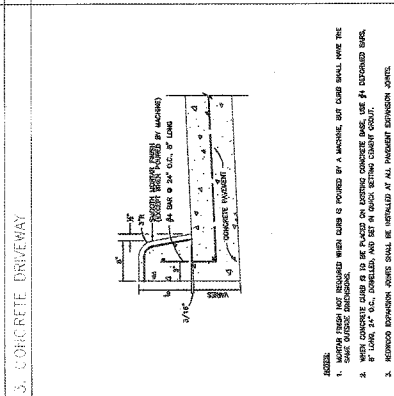
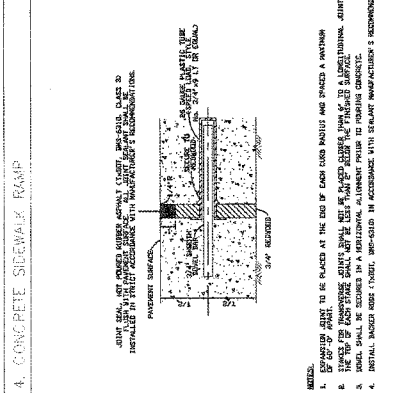
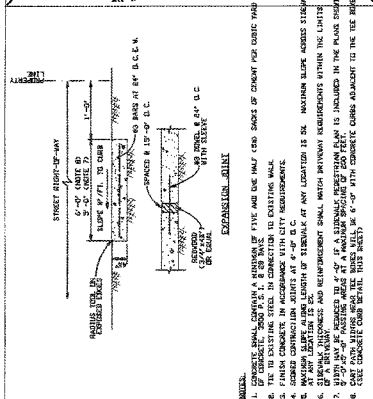
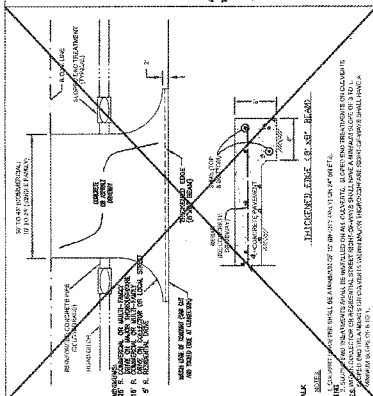
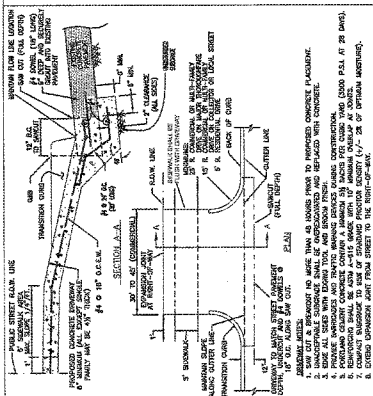
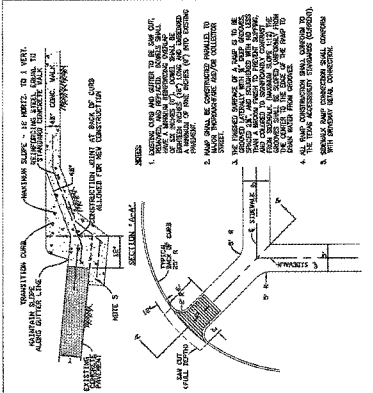


JONES & CARTER, INC.
 ARCHITECTS & ENGINEERS
 1000 W. BROAD ST., SUITE 1000
 RICHMOND, VIRGINIA 23220
 PHONE: (804) 781-1000
 FAX: (804) 781-1001

CITY OF RICHMOND
 STANDARD CONSTRUCTION DETAILS
 PAVING I

SCALE
 HORIZONTAL: 1" = 40'
 VERTICAL: 1" = 4"

DATE: OCTOBER 21, 2002
 SHEET NO.: 22
 OF 24



| | |
|-------------|-------------------------------|
| DATE | 10/10/19 |
| SCALE | AS SHOWN |
| PROJECT | STANDARD CONSTRUCTION DETAILS |
| DESIGNER | J.F. JONES & C. CARTER, INC. |
| CHECKED BY | [Signature] |
| APPROVED BY | [Signature] |
| DATE | 10/10/19 |
| SCALE | AS SHOWN |
| PROJECT | STANDARD CONSTRUCTION DETAILS |
| DESIGNER | J.F. JONES & C. CARTER, INC. |
| CHECKED BY | [Signature] |
| APPROVED BY | [Signature] |
| DATE | 10/10/19 |

J.F. JONES & C. CARTER, INC.
 ENGINEERS AND ARCHITECTS
 1000 W. BROADWAY, SUITE 1000
 HOUSTON, TEXAS 77002
 PHONE: (713) 596-1000
 FAX: (713) 596-1001
 WWW: www.jfc.com

CITY OF HOUSTON
 STANDARD CONSTRUCTION DETAILS
 PAVING H

SCALE: AS SHOWN
 DRAWN BY: [Name]
 CHECKED BY: [Name]
 DATE: OCTOBER 10, 2019
 SHEET NO.: 23
 OF 23

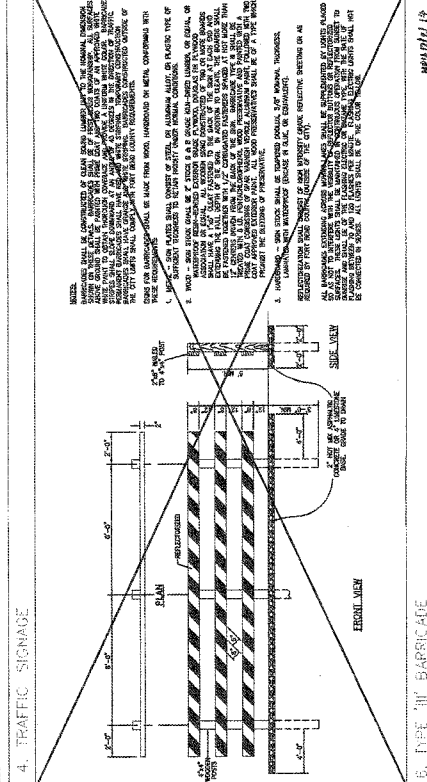
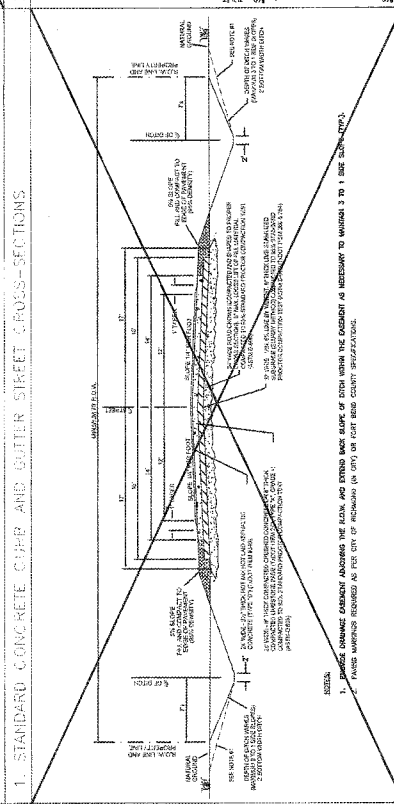
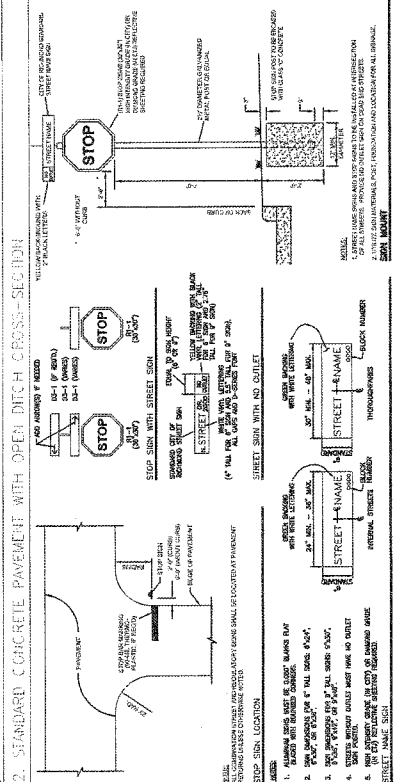
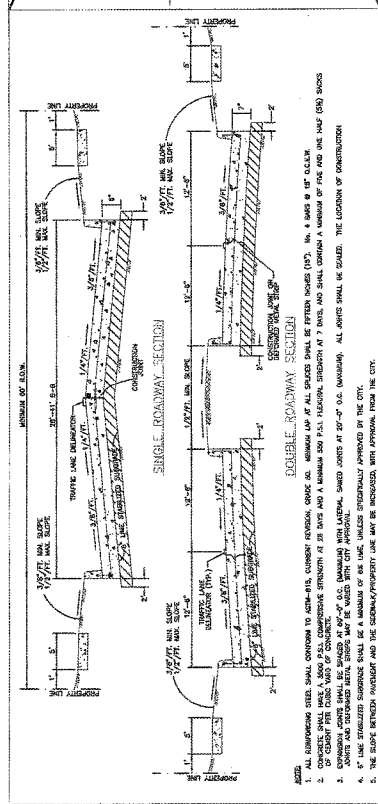
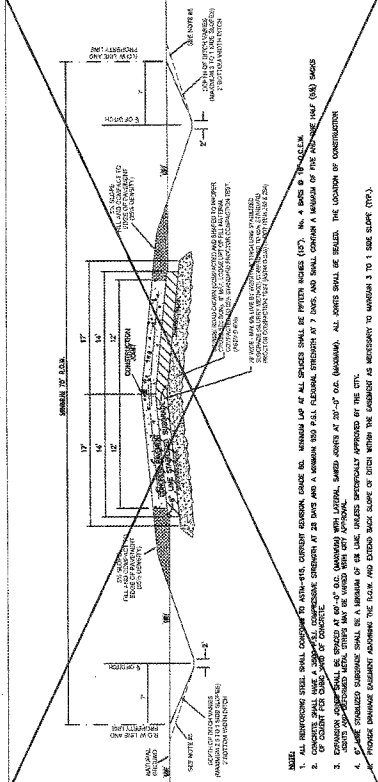


TABLE 1: STANDARD CONSTRUCTION DETAILS - PAVING H

| ITEM NO. | DESCRIPTION | UNIT | QTY | PRICE | TOTAL |
|----------|----------------------------|-------------|-----|-------|---------|
| 1 | CONCRETE CURB | LINEAL FOOT | 100 | 1.50 | 150.00 |
| 2 | ASPHALT PAVEMENT | SQ. YD. | 500 | 2.00 | 1000.00 |
| 3 | CONCRETE PAVEMENT | SQ. YD. | 500 | 3.00 | 1500.00 |
| 4 | TRAFFIC SIGNAGE | SIGN | 10 | 10.00 | 100.00 |
| 5 | SLOPED END TREATMENT | LINEAL FOOT | 100 | 1.00 | 100.00 |
| 6 | STANDARD CONCRETE CURB | LINEAL FOOT | 100 | 1.50 | 150.00 |
| 7 | STANDARD ASPHALT PAVEMENT | SQ. YD. | 500 | 2.00 | 1000.00 |
| 8 | STANDARD CONCRETE PAVEMENT | SQ. YD. | 500 | 3.00 | 1500.00 |
| 9 | TRAFFIC SIGNAGE | SIGN | 10 | 10.00 | 100.00 |
| 10 | SLOPED END TREATMENT | LINEAL FOOT | 100 | 1.00 | 100.00 |

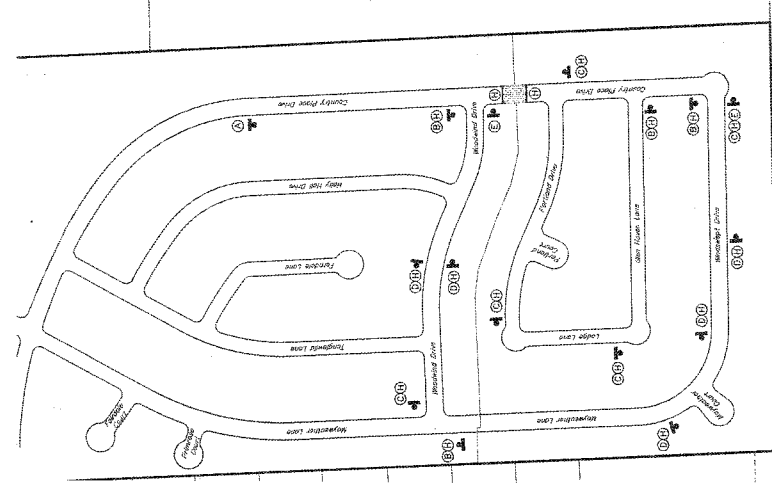


APPROVED: *[Signature]*
 DATE: 12/1/14

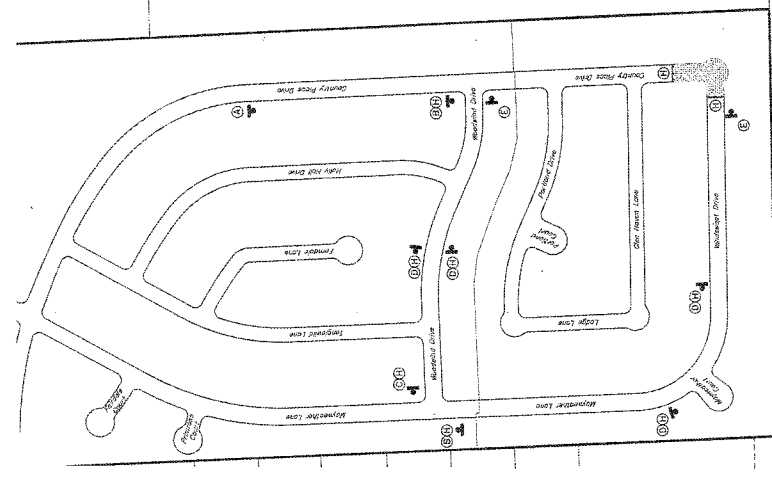
PRIVATE UTILITY LINES SHOWN
 ALL INFORMATION IS BASED ON RECORD DRAWINGS AND FIELD SURVEY.
 CONTRACTOR SHALL VERIFY ALL UTILITY LOCATIONS AND DEPTHS PRIOR TO CONSTRUCTION.
 CONTRACTOR SHALL BE RESPONSIBLE FOR OBTAINING ALL NECESSARY PERMITS FROM THE APPROPRIATE AGENCIES.
 CONTRACTOR SHALL MAINTAIN ALL UTILITIES AND SHALL BE RESPONSIBLE FOR REPAIRING ANY DAMAGE TO UTILITIES CAUSED BY CONSTRUCTION.
 CONTRACTOR SHALL MAINTAIN ACCESS TO ALL ADJACENT PROPERTIES AT ALL TIMES.
 CONTRACTOR SHALL MAINTAIN ALL NECESSARY SAFETY MEASURES AND SHALL BE RESPONSIBLE FOR TRAFFIC CONTROL DURING CONSTRUCTION.
 CONTRACTOR SHALL MAINTAIN ALL NECESSARY RECORD DRAWINGS AND SHALL BE RESPONSIBLE FOR OBTAINING ALL NECESSARY PERMITS FROM THE APPROPRIATE AGENCIES.
 CONTRACTOR SHALL MAINTAIN ALL NECESSARY SAFETY MEASURES AND SHALL BE RESPONSIBLE FOR TRAFFIC CONTROL DURING CONSTRUCTION.

THE GROVE 4 & 5
 DRAINAGE IMPROVEMENTS
TRAFFIC CONTROL PLAN
 REGAN GROVE MUNICIPAL UTILITY DISTRICT
 FORT BEND COUNTY, TEXAS

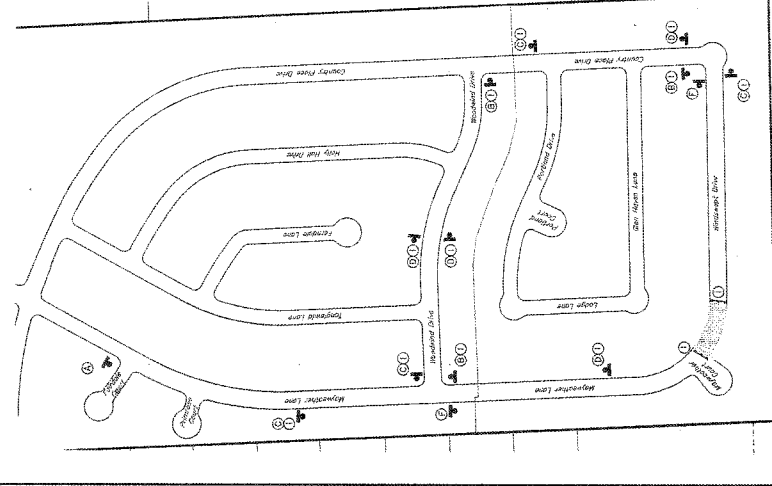
J. JONES & CARTER, INC.
 ENGINEERS - PLANNERS - ARCHITECTS
 6115 Northway Road
 Houston, Texas 77057
 PHONE: 281-291-1100
 FAX: 281-291-1101
 PROJECT NO.: 13031-0000-0000
 DRAWING NO.: TRAFFIC CONTROL PLAN
 SHEET NO. 24
 OF 24



Traffic Control for Closure of
 County Rice Drive



Traffic Control for Closure of
 Windward Drive & County Rice Drive



Traffic Control for Closure of
 Manswartz Drive

TRAFFIC CONTROL LEGEND
 Working Road Closed - Detour
 Construction Barreage
 Detour Route - Direction Arrow
 Construction Barreage Signage
PHASE WORK ZONE AREA

TRAFFIC CONTROL CONSTRUCTION SEQUENCE

| | | | |
|-------------|--------|-------------------------|-----------------------|
| 1 | 2 | 3 | 4 |
| ROAD CLOSED | DETOUR | ROADS CLOSED TO TRAFFIC | CONSTRUCTION BARREAGE |
| ROAD CLOSED | DETOUR | ROADS CLOSED TO TRAFFIC | CONSTRUCTION BARREAGE |
| ROAD CLOSED | DETOUR | ROADS CLOSED TO TRAFFIC | CONSTRUCTION BARREAGE |

800 SET ONLY
 NOT FOR CONSTRUCTION